

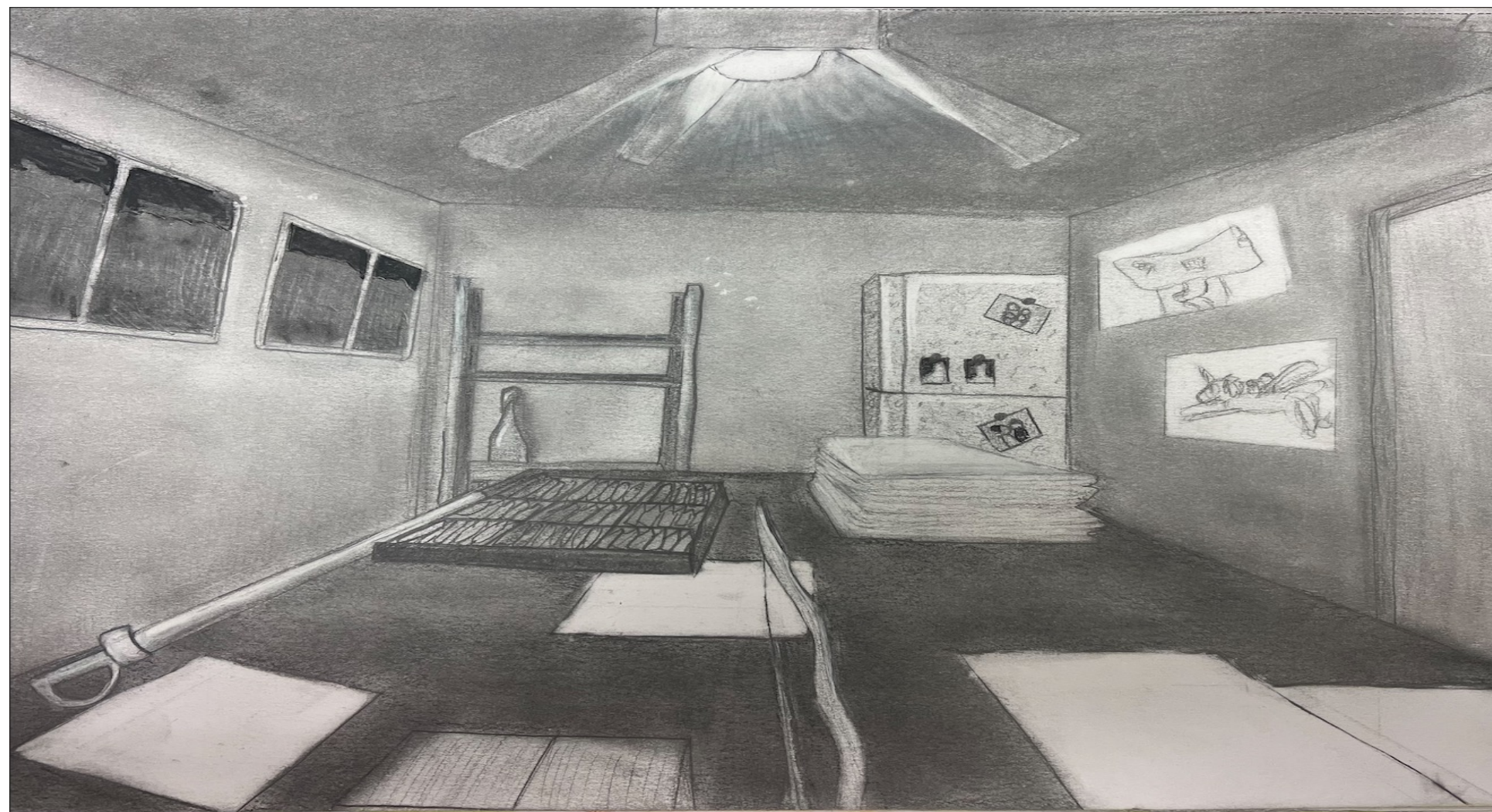


Fantasy and Feelings: *The Geliwald Process*

Danielle Di Pentima, class of 2023

Faculty Sponsor: Kelly Dolak; Faculty Reader: Rowlett Neel Scott

Ramapo College of New Jersey, Mahwah, NJ, 07430

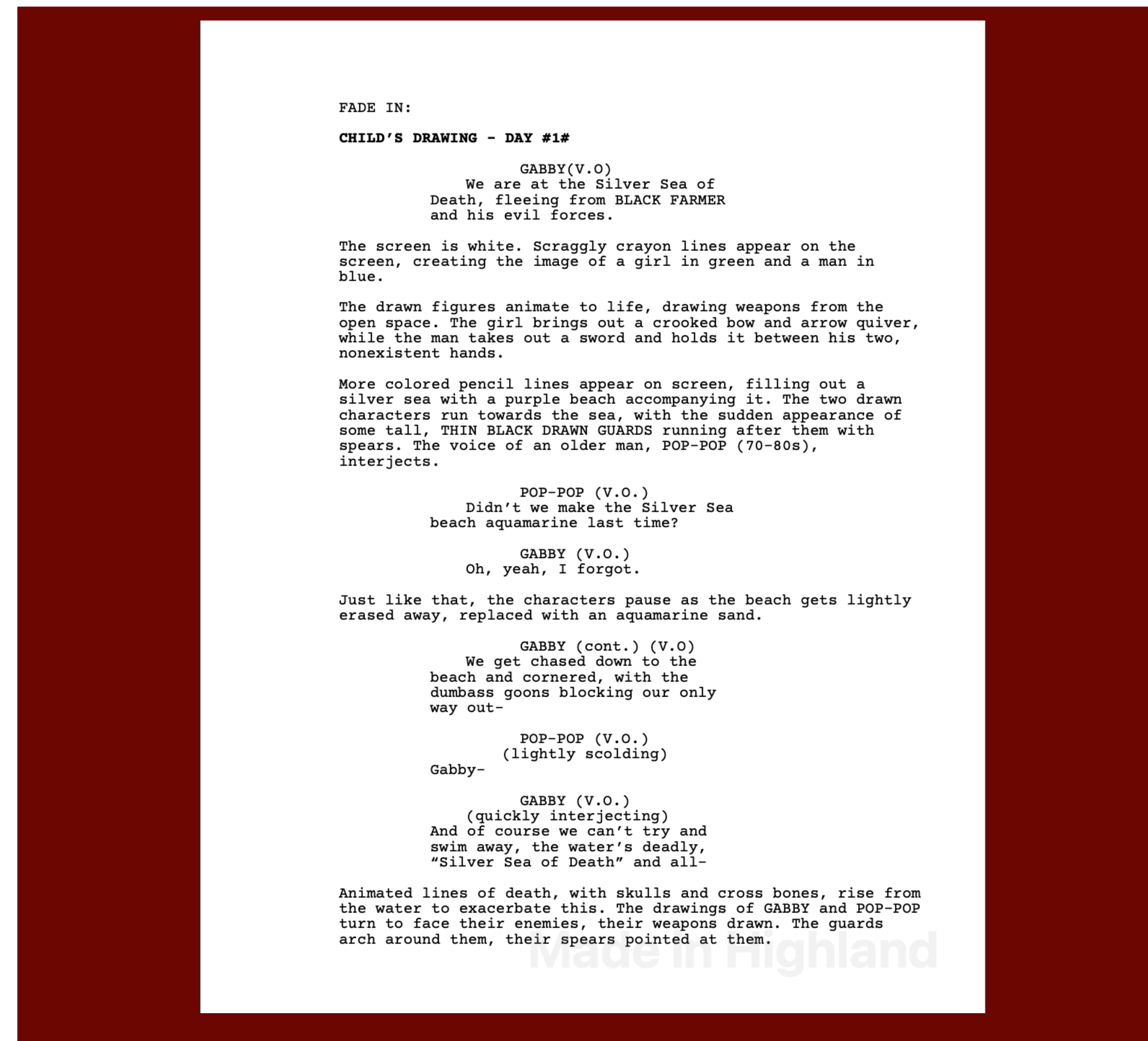


Abstract & Story Synopsis

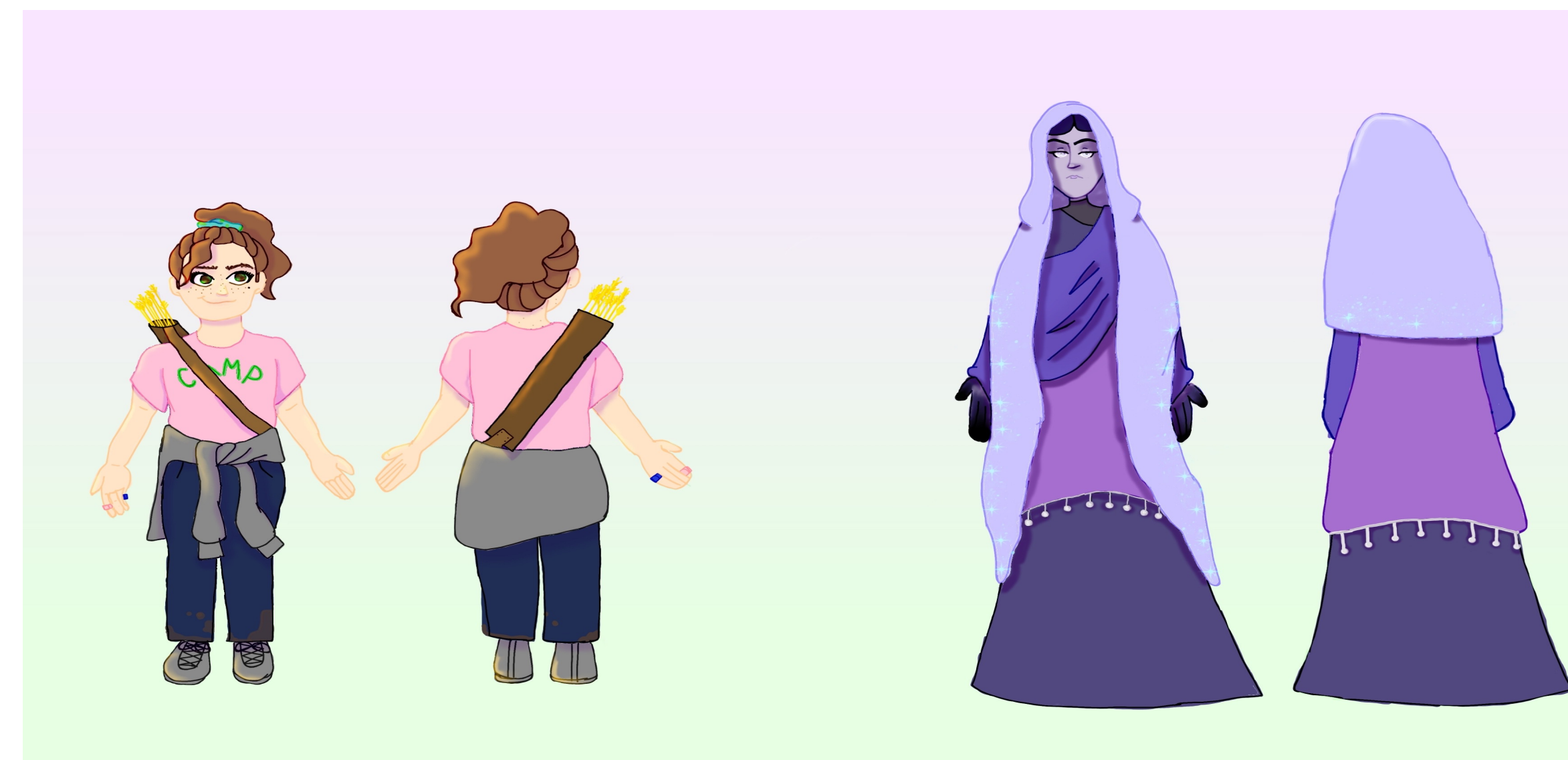
Writing and story crafting is one of the best ways to understand our emotions through the physical process of putting into words the non-legible confusion in our brains. In four months, with my project adviser and utilizing creative thinking strategies, I wrote a full-length screenplay from scratch.

The plot and characters were drawn from my experiences coping with the loss of both my grandfathers, and how I distracted myself to avoid my grief. This work is the culmination of my college career, combining my creative writing and media critique classes, and the influences of poignant occurrences from my life.

My script follows Gabby after the death of her Pop-Pop, who was her best friend and introduced her love of fantasy. When her parents want to sell his house, she wants to find Pop-Pop to save the house and her memories there. She discovers by drinking her family's grappa she can enter Geliwald, her original fantasy world, and she works with allies old and new to defeat Black Farmer and save Pop-Pop. As she traverses further, she acts more dangerously and is betrayed by the mage Frieg, which turns this journey into a matter of life and death.



A young girl struggles with the loss of her grandfather and creates a fantasy world through her grief.



Beat Breakdown

- Opening Image: drawings of Gabby and Pop-Pop in Geliwald
- Set-up: Establishing discussions of loss, the Gelli family as a unit
- Catalyst: Mom tells Gabby Pop-Pop has passed
- Break into Two: Gabby wants to find a way to keep Pop-Pop's house from being sold, using grappa (wine)
- Fun & Games: adventures and battles in Geliwald and the real world
- Midpoint: Gabby finds Pop-Pop, but he is just out of reach
- All is Lost: Black Farmer dissolves, Frieg is revealed as the real antagonist
- Break into Three: Gabby and allies need to fight their way out of Geliwald and back into consciousness
- Final Image: Gabby and the Gellis together at Pop-Pop's grave, understanding one another

Character Descriptions

- Gabby- rambunctious 12-year-old girl, main focus and imaginator
- Pop-Pop- Gabby's grandfather and best friend
- Frieg- a dark mage, manifestation of Gabby's grief, wants her to reunite with Pop-Pop by any means
- Alexander- imagined prince ally, representation of romantic attraction to explore feelings
- Nuppy- puppy-monster hybrid, culmination of childhood joy and imagination, childlike energy