

Resilience.

Resilient

Resilient

Planning

Community

Self-reliance

Anticipate

Strong

Bounce back

Local

Adapt

Understanding

Collaboration

Training

Systems

Avoid

Adjust

Come back stronger

People

Social capital

Assessment

Inventory

Adversity

Thoughtful

Communications

Regionally prepared

Prioritize

Sustain

Mitigation

grassroots effort

Respond

Coordinate

Weather the storm

Preventing damage

Carry on

Responsibility

Tight-knit

Move forward

Connect

Smart

Minimize risk

Nimble

Leadership

Diverse

Act together

Holistic

Persevere

Consensus

Withstand hardship

Cooperation

Ability

Overcome challenges

Preparedness

Redundant systems

Respond to threats

Proactive Learning

Resilience.



Understand
the Issues



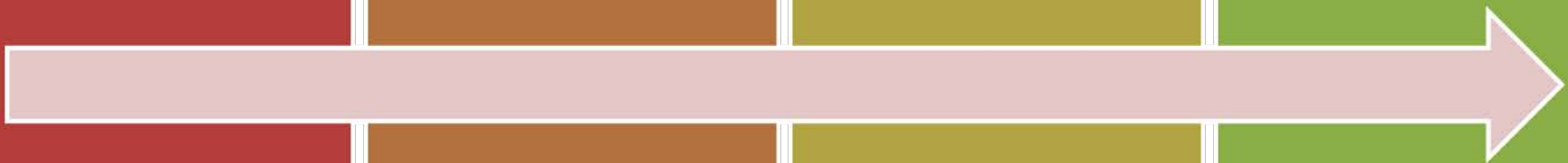
Assess Risk
and
Vulnerability



Plan for the
Future



Implement
and Adapt





Understand
the Issues

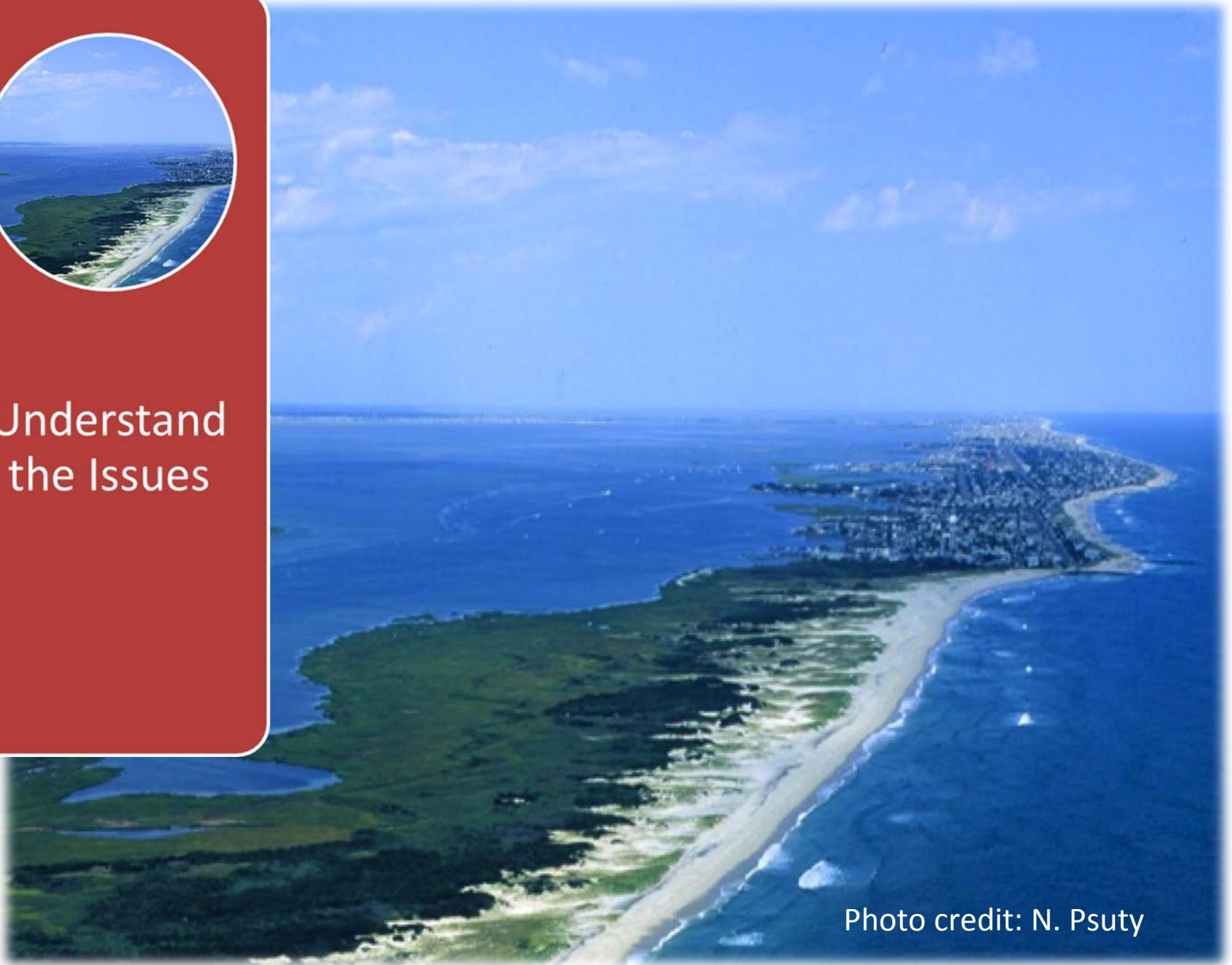
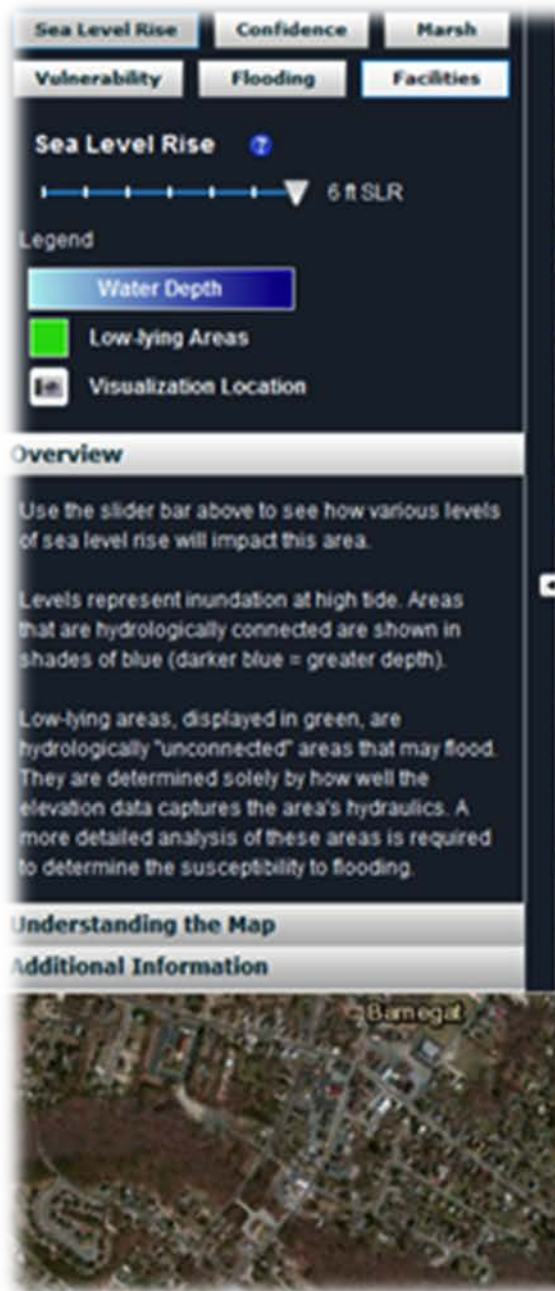


Photo credit: N. Psuty



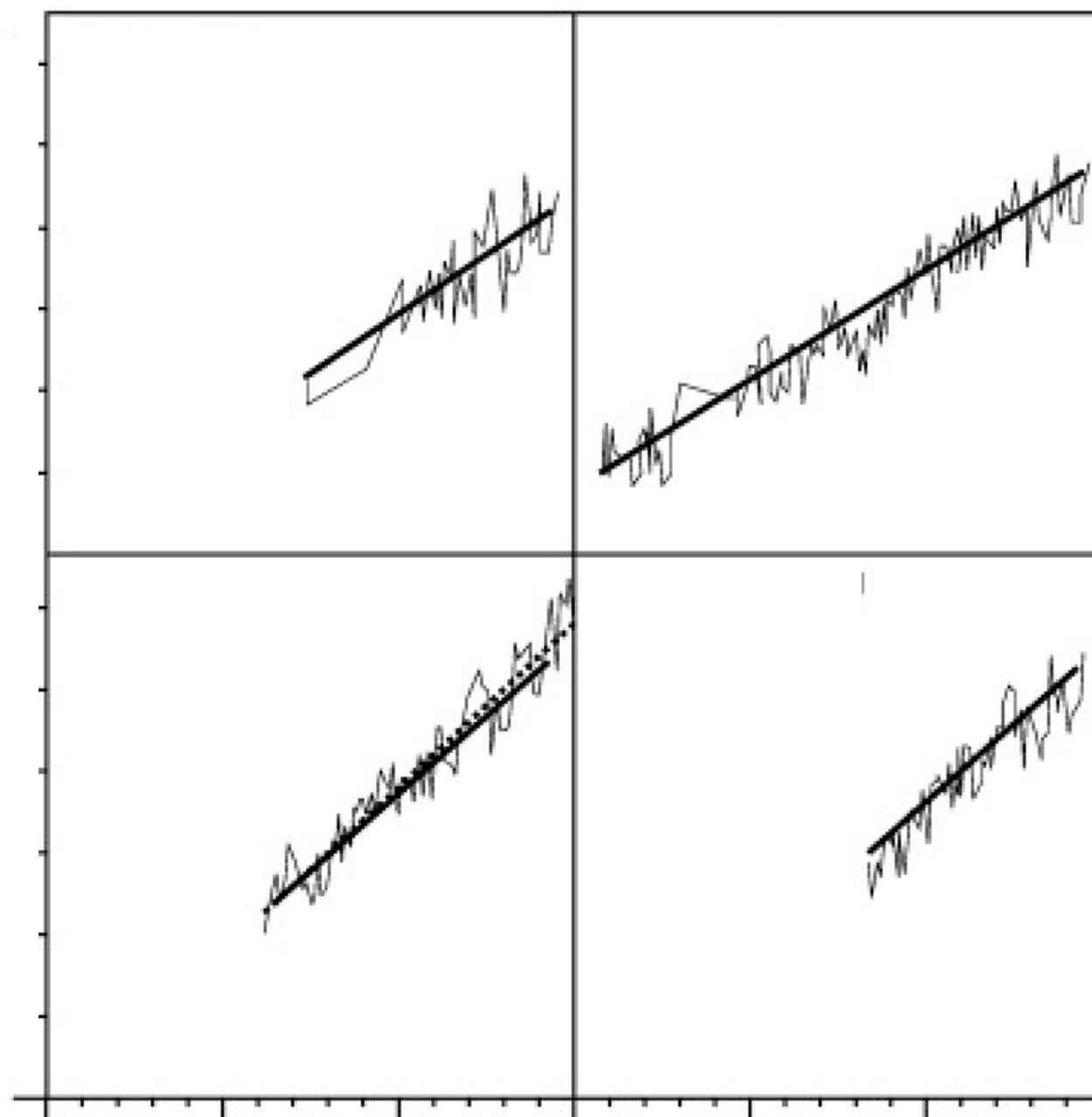
Assess Risk and Vulnerability

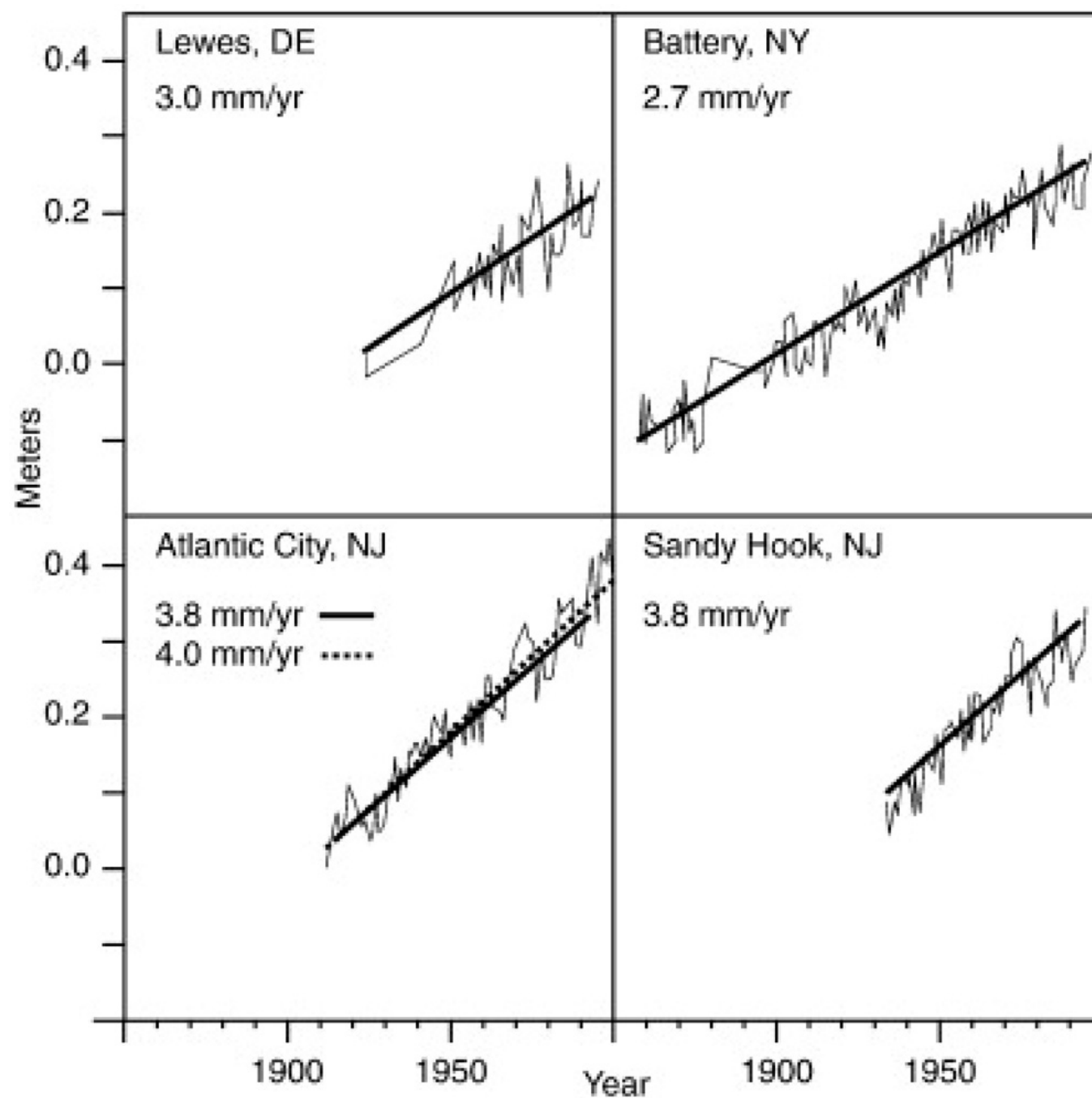


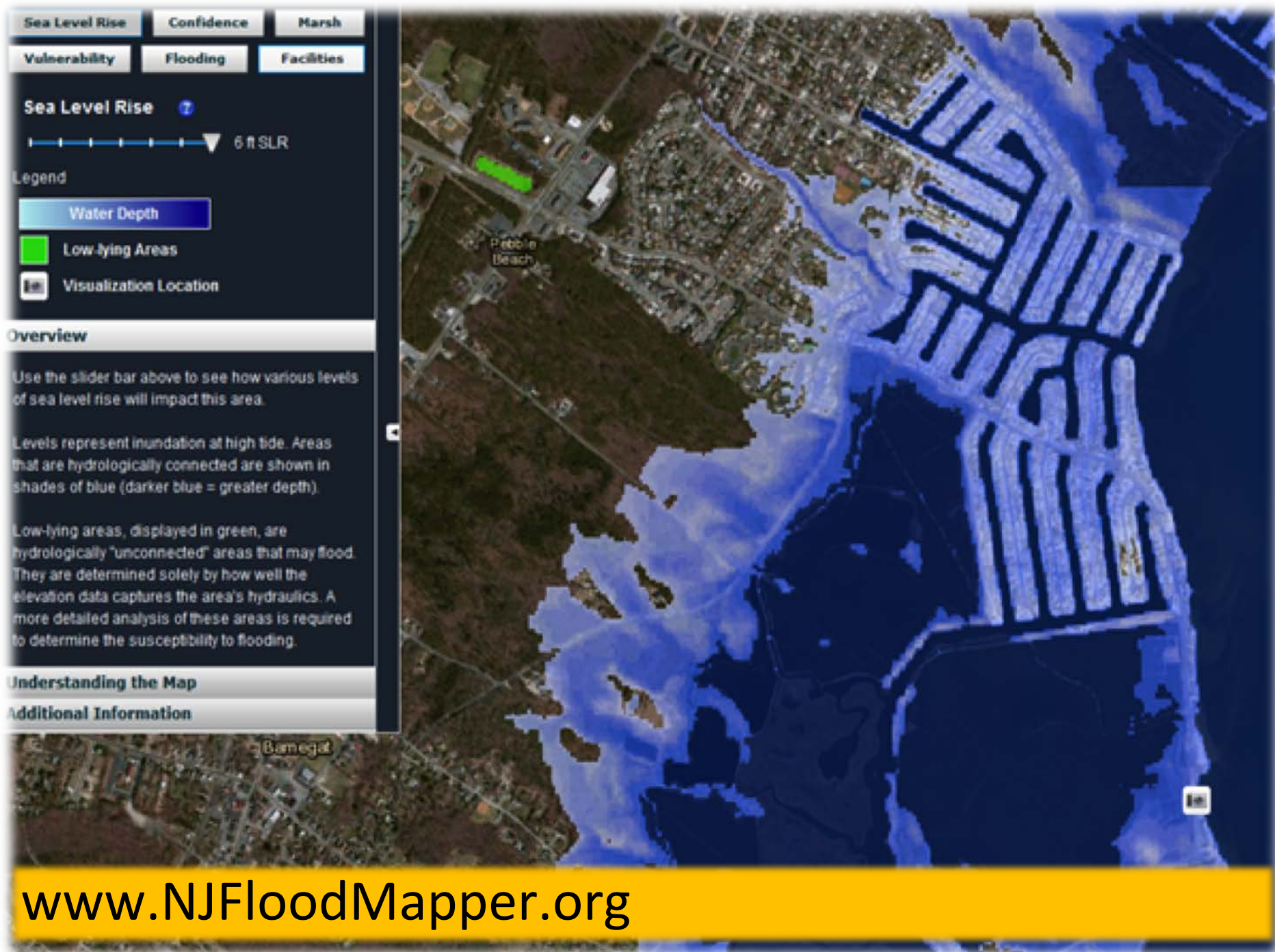


FEMA's Best Available Data

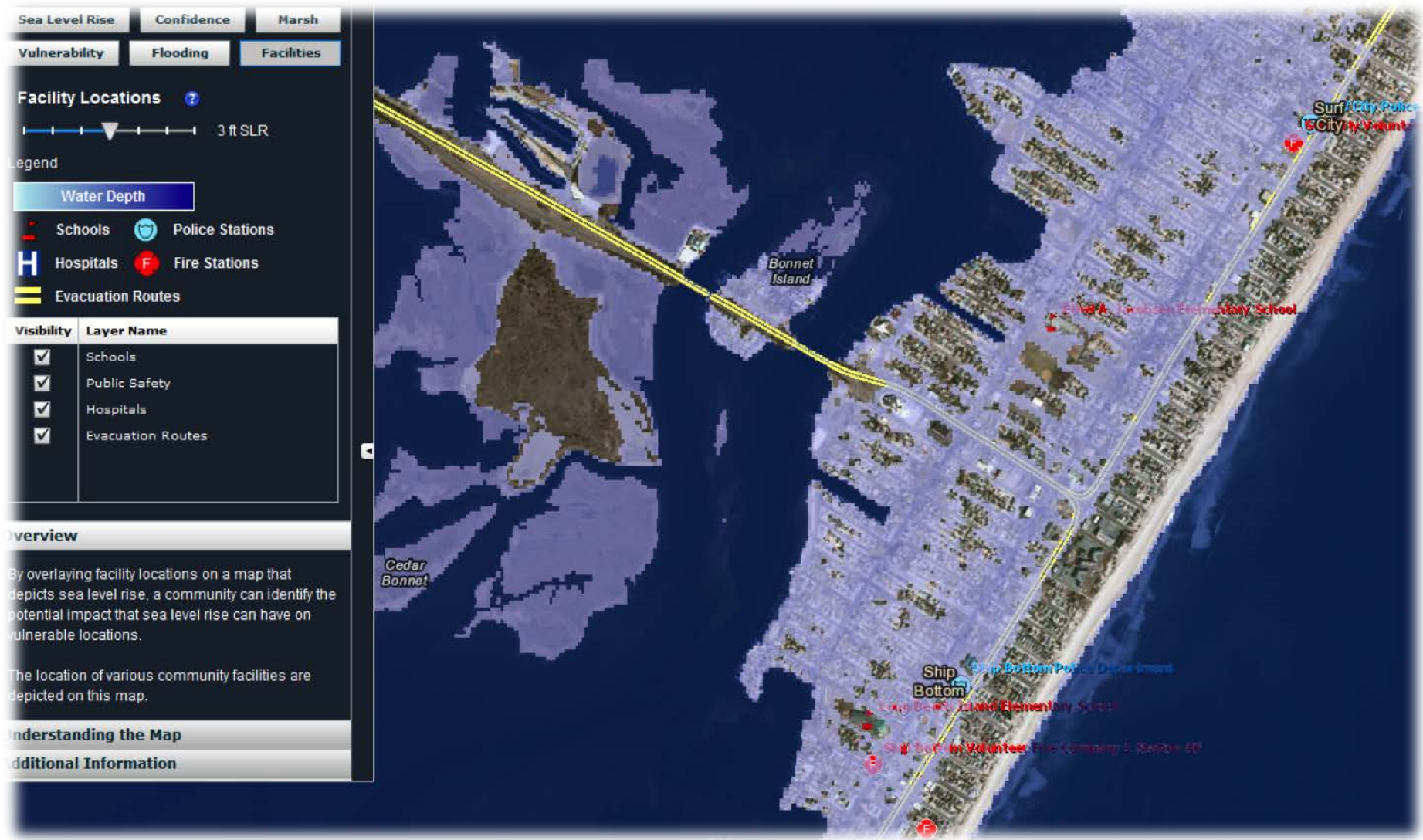
1000000



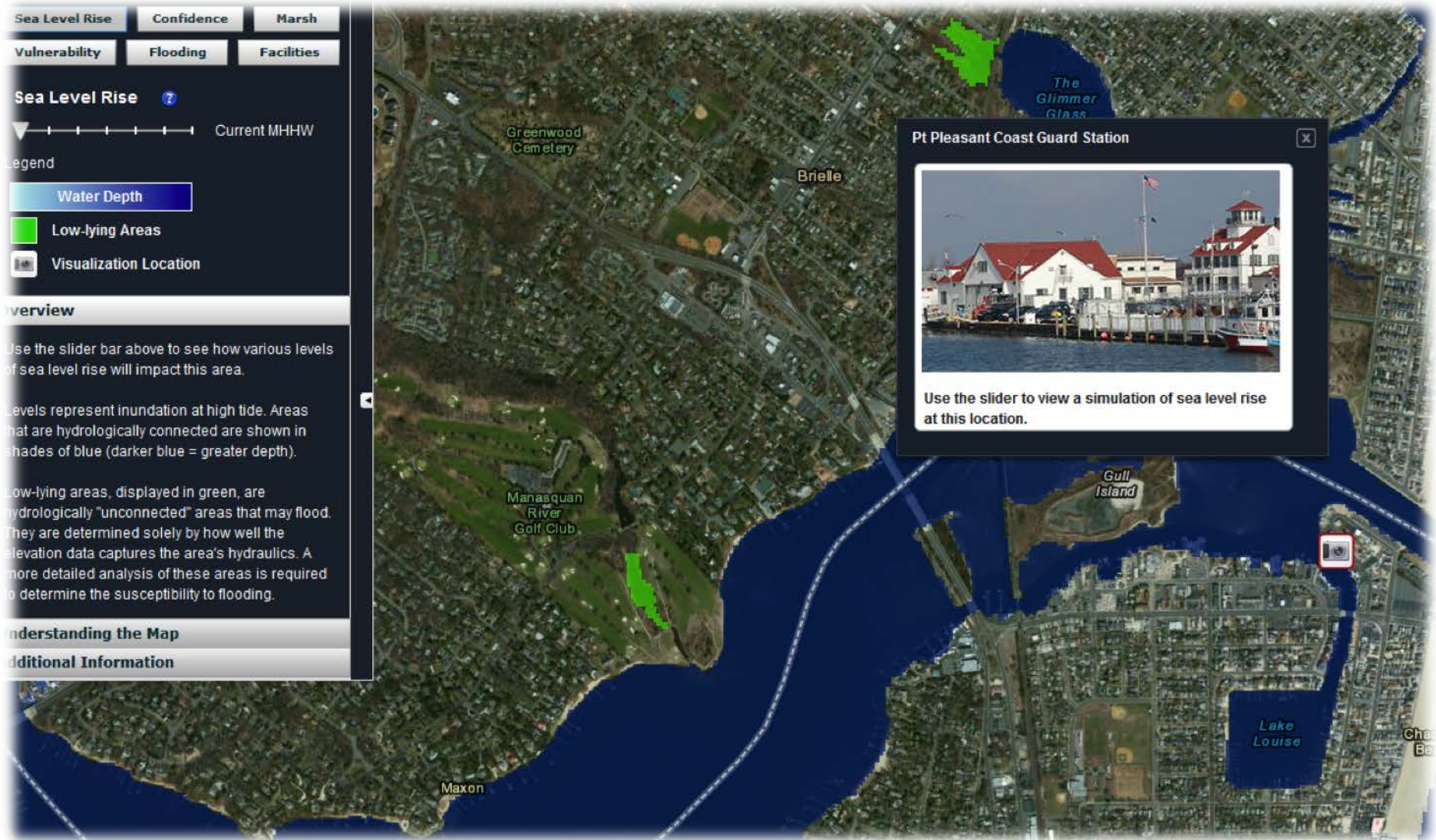




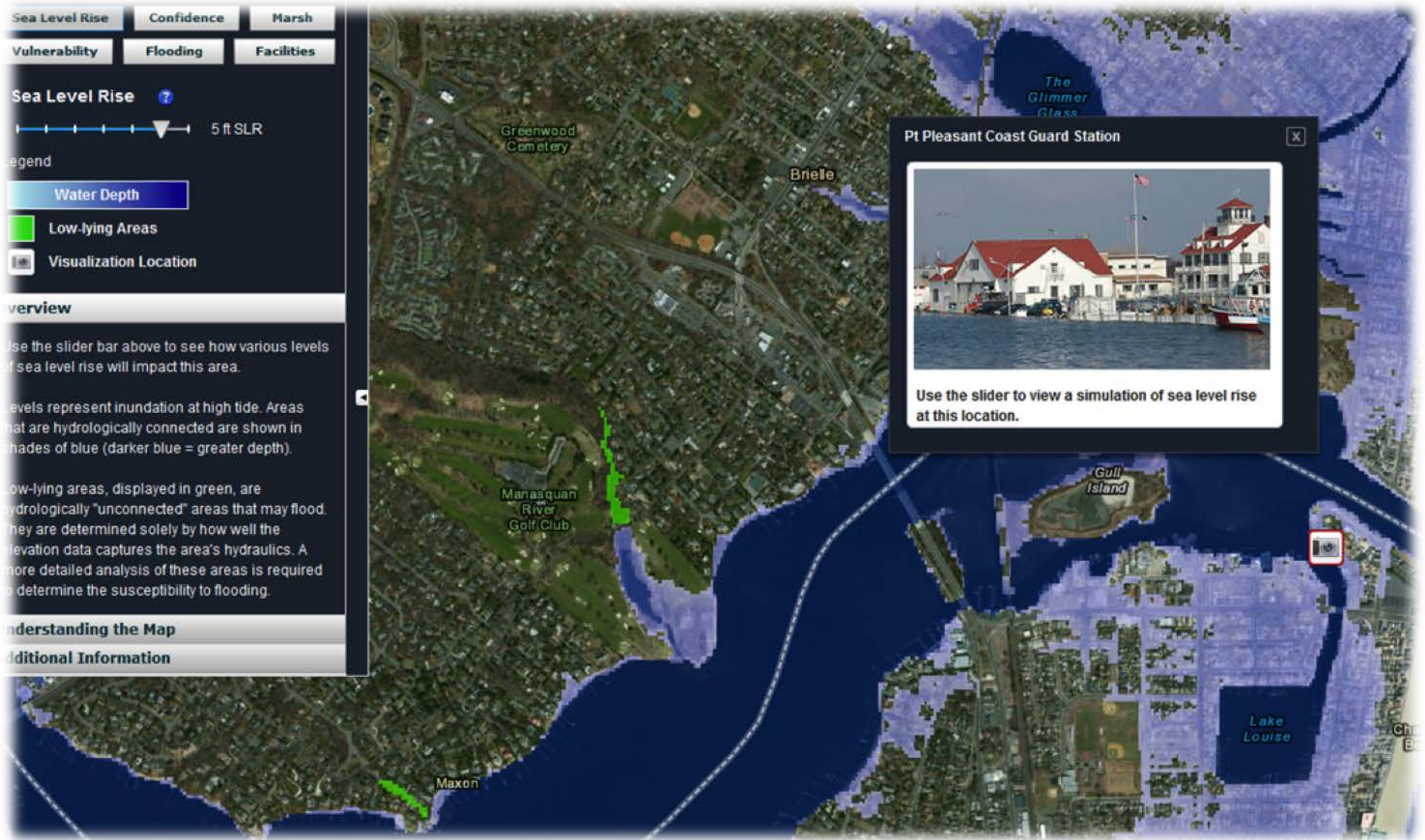
Critical Facilities and Sea level Rise



On the Ground Impacts



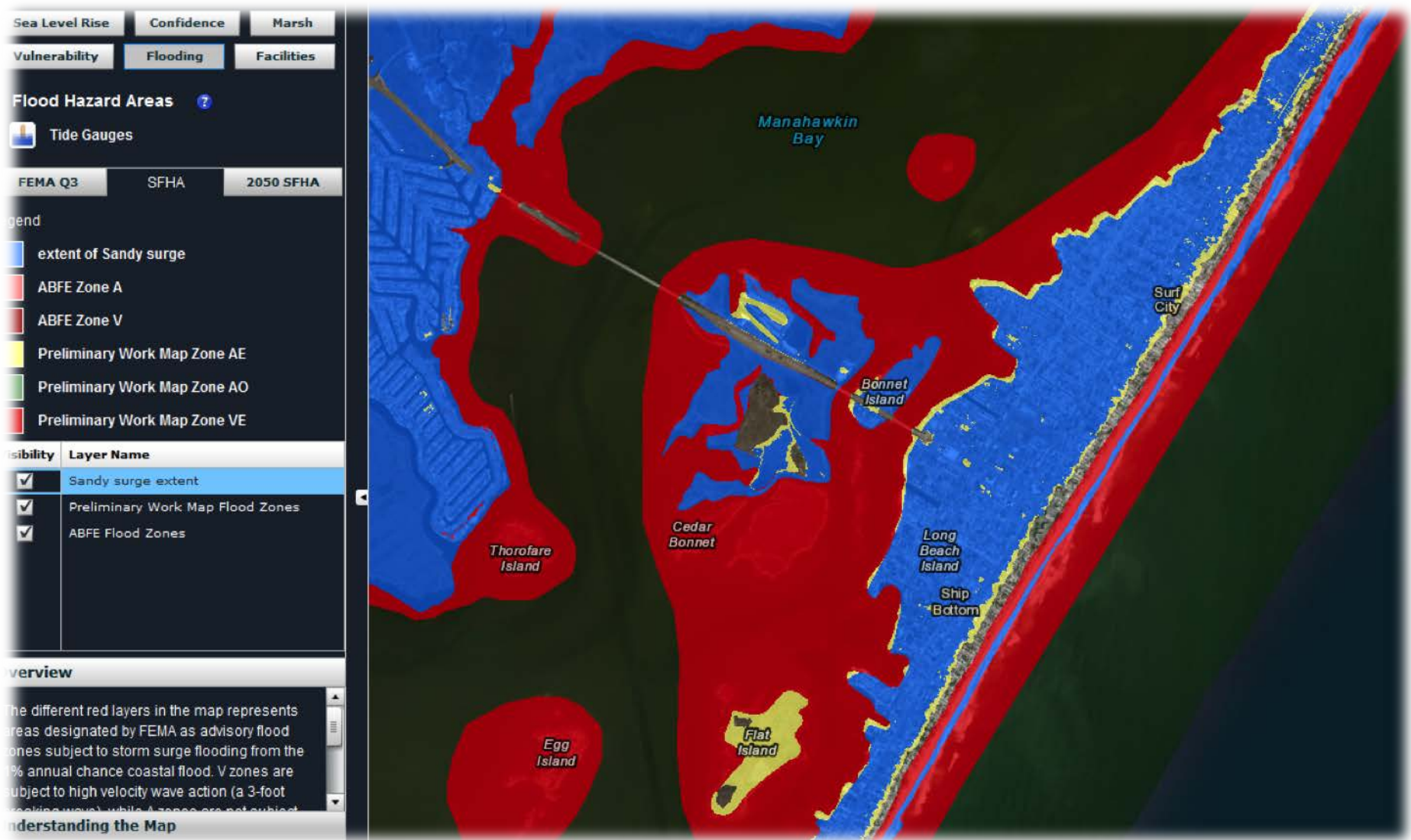
On the Ground Impacts



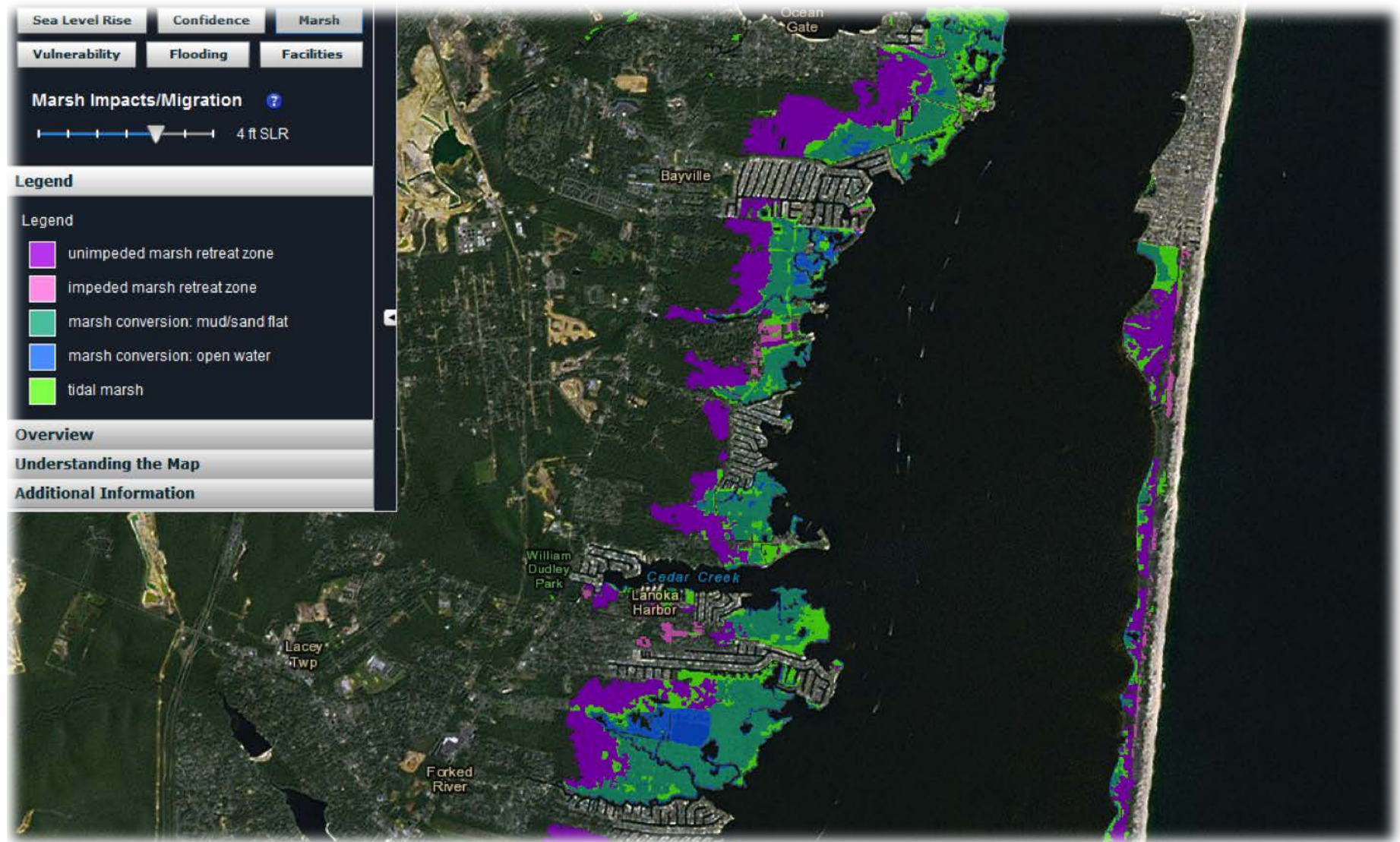
FEMA Preliminary Maps



FEMA Preliminary Maps and Sandy



Marsh Migration





Home Climate Change Linkages FAQ Tutorials Flood M

Getting to Resilience

A Community Planning Evaluation Tool

This online self assessment process is a tool to assist communities to reduce vulnerability and increase preparedness by linking planning, mitigation, and adaptation. Through this assessment you will find out how preparedness can be worth valuable points through FEMA's Community Rating System and Sustainable Jersey.

Plan for your community's future in the face of climate change [Get Started](#)

HOW DO I GET TO RESILIENCE?

Enabling communities to be prepared and more resilient.

Map Flood Vulnerability

This user-friendly online flood mapper will help you better visualize your community's susceptibility to flooding and sea level rise.

1

Assemble Municipal Plans

The Community Plan Checklist includes a list of municipal and county documents that may assist you in the completing your evaluation.

2

Complete the Evaluation

Identify planning, mitigation, and adaptation opportunities; assess vulnerability to flooding, sea level rise and build capacity for resilience.

Discover Links with Other Municipal Programs

This tool will help you identify connections between preparedness and programs like FEMA's Community Rating System, Hazard Mitigation Planning and Sustainable Jersey.

4

Explore Related Resources

Additional tools and best management practices that will help you with vulnerability assessments, outreach, integrated planning, storm preparedness and mitigation.

Plan for the Future



www.PrepareYourCommunity.org





Getting to Resilience

A Community Planning Evaluation Tool

This online self assessment process is a tool to assist communities to reduce vulnerability and increase preparedness by linking planning, mitigation, and adaptation. Through this assessment you will find out how your preparedness can be worth valuable points through FEMA's Community Rating System and Sustainable Jersey.

Plan for your community's future in the face of climate change

[Get Started Now](#)

HOW DO I GET TO RESILIENCE?

Enabling communities to be prepared and more resilient.

1 Map Flood Vulnerability

This user-friendly online flood mapper will help you better visualize your community's susceptibility to flooding and sea level rise.

2 Assemble Municipal Plans

The Community Plan Checklist includes a list of municipal and county documents that may assist you in the completing your evaluation.

3 Complete the Evaluation

Identify planning, mitigation, and adaptation opportunities to reduce vulnerability to flooding and sea level rise and build capacity for community resilience.

4 Discover Links with Other Municipal Programs

This tool will help you identify connections between preparedness and programs like FEMA's Community Rating System, Hazard Mitigation Planning and Sustainable Jersey.

5 Explore Related Resources

Additional tools and best management practices that will help you with vulnerability assessments, outreach, integrated planning, storm preparedness and mitigation.

www.PrepareYourCommunity.org

Municipal Plans

Master Plan

All-Hazards Mitigation Plan

Floodplain Management Plan

Evacuation Plan

Emergency Response Plan

Continuity of Operations Plan

Disaster Recovery Plan

Open Space Plan

Stormwater Management
Plan

Municipal Members

Land use Planners

Hazard Mitigation Planners

Floodplain Managers

Emergency Managers

Stormwater Managers

Natural Resource Managers

Municipal Engineers

Town Administrators

Clerks



[My Account](#) | [Logout](#)[Survey](#) [Glossary](#) [Linkages](#) [FAQ](#) [Tutorials](#) [Flood Mapper](#) [Contact](#)[Getting to Resilience JC NERR Test](#)[Community Planning Evaluation Tool](#)

Risk and Vulnerability Assessments

Section 1: Risk & Vulnerability Assessments

While the entire New Jersey shore is vulnerable to coastal hazards, the likelihood and severity of these hazards varies depending upon a community's geography and the integrity of its natural buffers. Risk and vulnerability assessments can inform municipal officials of vulnerable populations, businesses, infrastructure, and natural resources. They can also reveal the best location for future development or land acquisition. Simply identifying the risks and vulnerabilities within one's community often builds the knowledge and capacity for hazard avoidance and mitigation.

Public Engagement

Planning Integration

Disaster Preparedness and Recovery

Hazard Mitigation Implementation

SURVEY SECTIONS

[Section 1: Risk & Vulnerability Assessments](#)[Section 2: Public Engagement](#)[Section 3: Planning Integration](#)[Section 4: Disaster Preparedness and Recovery](#)[Section 5: Hazard Mitigation Implementation](#)

LINKAGES

[See your links to other programs](#)

Question	Yes	No	N/A	Clear
1.1 Are previous coastal hazards and disasters identified and mapped through historical information, existing plans and reports, scientific knowledge, and local knowledge?	<input checked="" type="radio"/>	<input type="radio"/>	<input type="radio"/>	<input type="button" value="Clear"/>
1.2 Are hazard probability, frequency, magnitude, and duration defined?	<input checked="" type="radio"/>	<input type="radio"/>	<input type="radio"/>	<input type="button" value="Clear"/>
1.3 Is coastal erosion and/or shoreline change identified as a hazard?	<input checked="" type="radio"/>	<input type="radio"/>	<input type="radio"/>	<input type="button" value="Clear"/>
1.4 Is sea level rise identified as a hazard?	<input checked="" type="radio"/>	<input type="radio"/>	<input type="radio"/>	<input type="button" value="Clear"/>
1.5 Are islands or oyster reefs identified as a hazard?	<input type="radio"/>	<input type="radio"/>	<input type="radio"/>	<input type="button" value="Clear"/>
1.6 Are conditions defined that could amplify the impact of a hazard, like storm surge inundation at high tide or erosion rates on stabilized shorelines?	<input type="radio"/>	<input type="radio"/>	<input type="radio"/>	<input type="button" value="Clear"/>
1.7 Are maps used to define the spatial extent of coastal hazards?	<input type="radio"/>	<input type="radio"/>	<input type="radio"/>	<input type="button" value="Clear"/>



! Things to Consider

Because you provided a "No" response to a question, action suggestions are provided that your community could consider taking to become more "resilient".



FEMA

★ CRS Suggestion

Because you provided a "Yes" response to the question, you will see how your community could be earning valuable points for your efforts through the Community Rating System.



FEMA

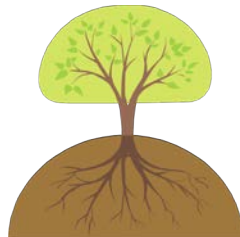
🌀 Hazard Mitigation Suggestion

Because you provided a "Yes" response to the question, you will see how your actions could be incorporated into you Hazard Mitigation Plan update.



🌱 Sustainable Jersey Suggestion

Because you provided a "Yes" response to the question, you will see how your community could be earning points for your efforts through the Sustainable Jersey.



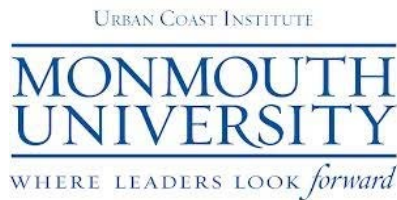
🌳 Inland Suggestions

As in Inland community, you have considerations that are different than coastal communities. We have provided suggestions for how these topics translate from coastal issues into inland issues.



Implement
and Adapt





NJ Climate Adaptation Alliance



Resilience 2.0