

# AFTER RIO+20 MOVING BEYOND 2015

Peoples' Sustainability Treaties in a Post Rio+20 Future:  
Advancing a Global Citizens Movement Around Sustainable Development  
A week-long set of Workshops from 15-19<sup>th</sup> October, 2012 at: SC-219, Ramapo College, Mahwah, NJ, USA

*Day 03/October 17, 2012*

**“Post Rio+20 Agenda: Peoples’ Sustainability  
Treaties in an Emerging World Order”**

# Architecture of a New World Order

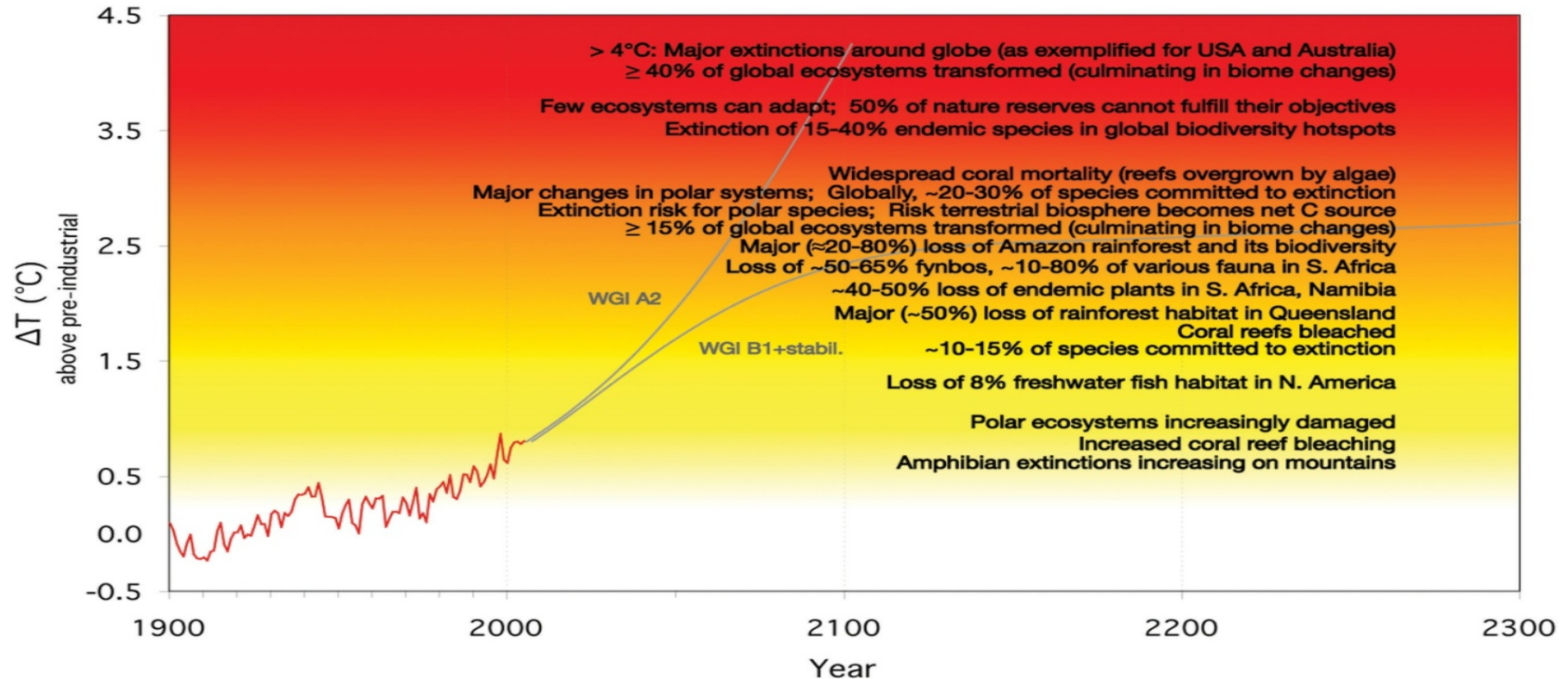


by UCHITA DE ZOYSA

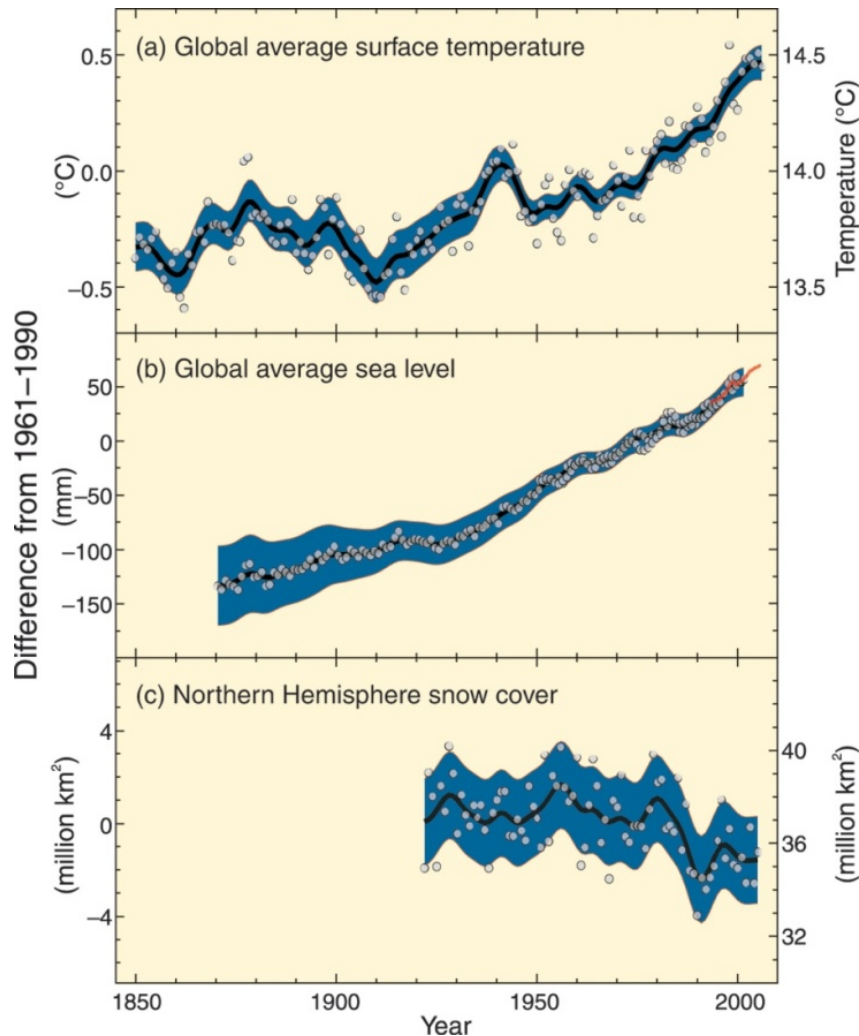


# HUMANS FACING MULTIPLE CRISES

“Humankind faces multiple and daunting crises that are more than likely to confront and impact billions of people in the decades to come.”



# HUMAN ACTION IS THREATNING EXTINCTION

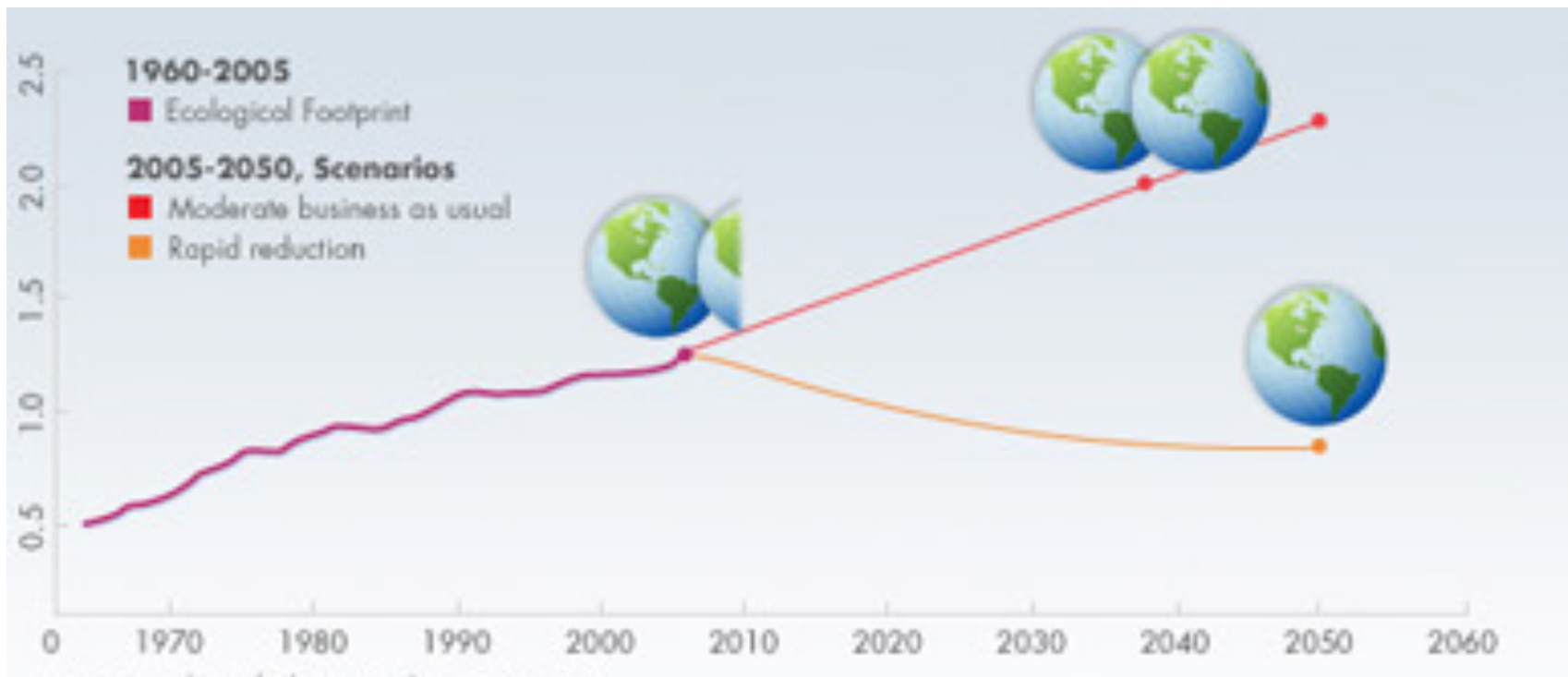


**“In addition, research is showing us that our actions are very likely going to cause us to transgress multiple planetary thresholds and boundaries.”**

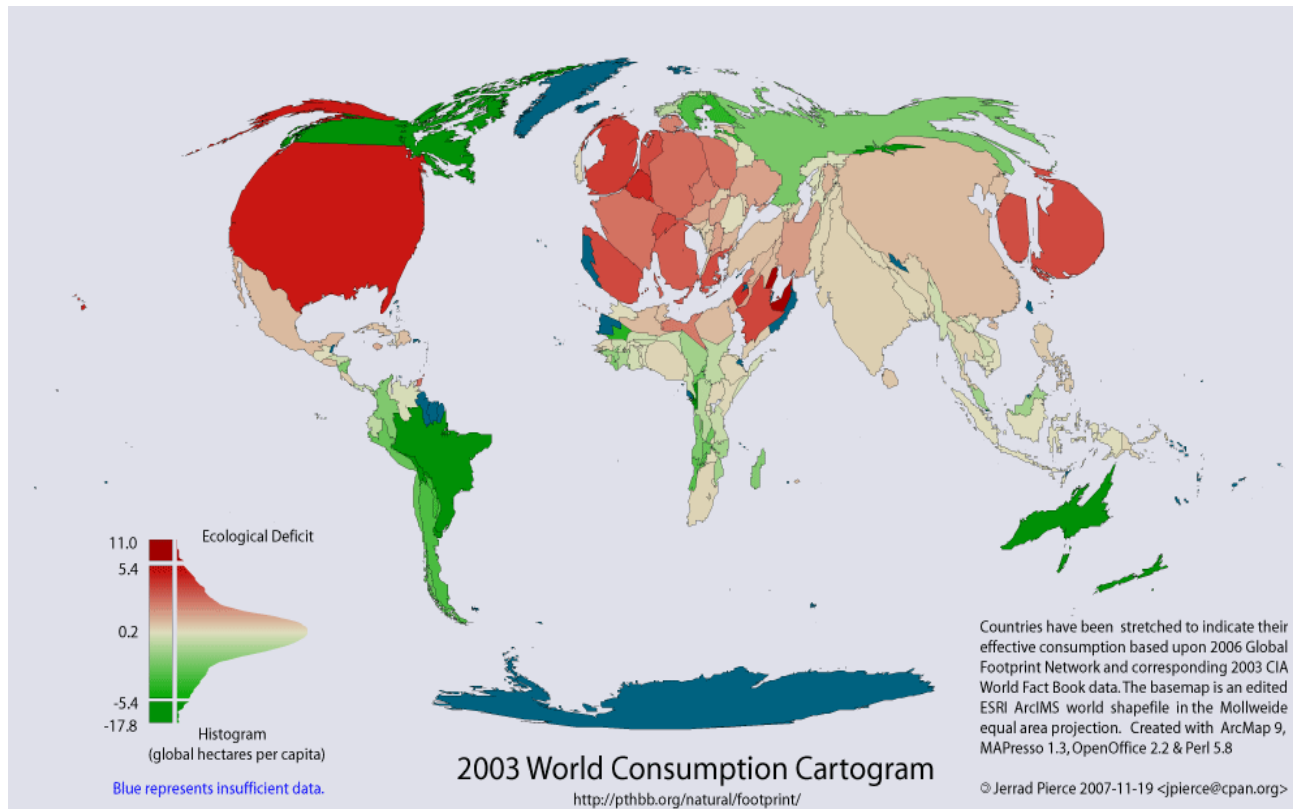


## TRAPPED IN UNSUSTAINABLE GROWTH

“Despite unprecedented growth in the global economy since 1992, governments are trapped in making insatiable demands for still more unsustainable growth and rising inequity to remedy problems that economic globalization itself has caused”

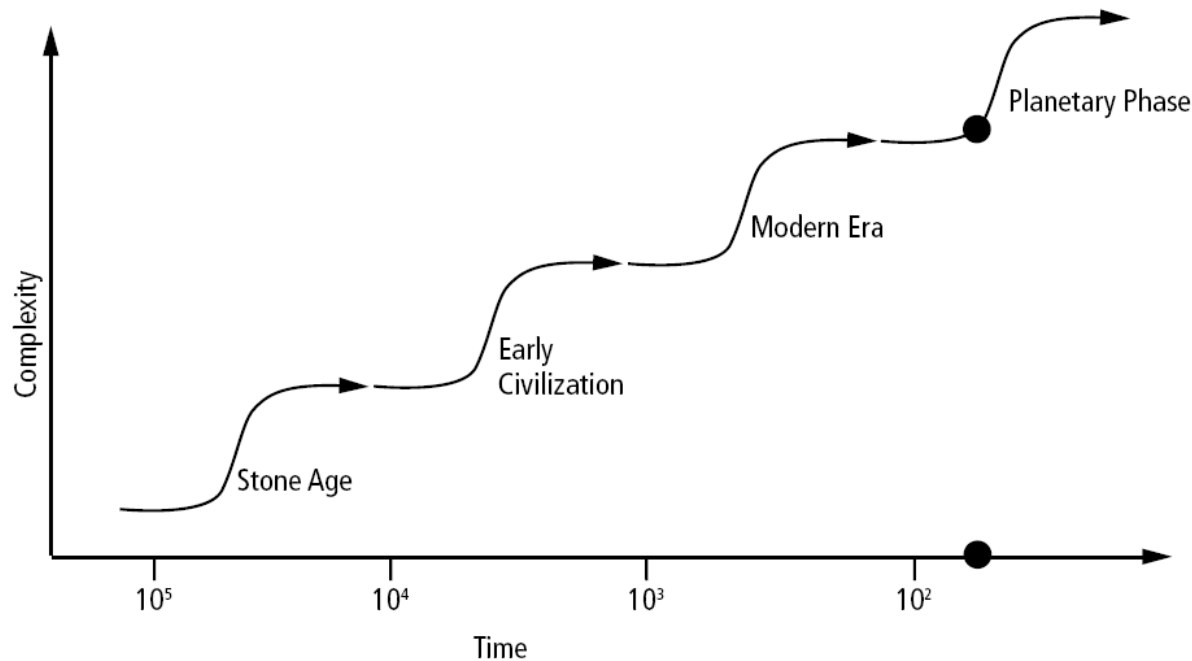


# AN UNSUSTAINABLE DEVELOPMENT MODEL



- The dominant model of development has entirely failed
- ½ of world in poverty
- Increased gap between rich and poor.
- degrading planetary bio-geo-chemical processes
- predatory of both nature and people

# NEW PLANETARY PHASE



- The world's increasing interdependence is eroding geographic and cultural boundaries
- Countries and people are converging in a global system with a shared collective destiny.

- We have entered a new planetary phase of civilization.
- This new era demands a deep shift in the direction of development.

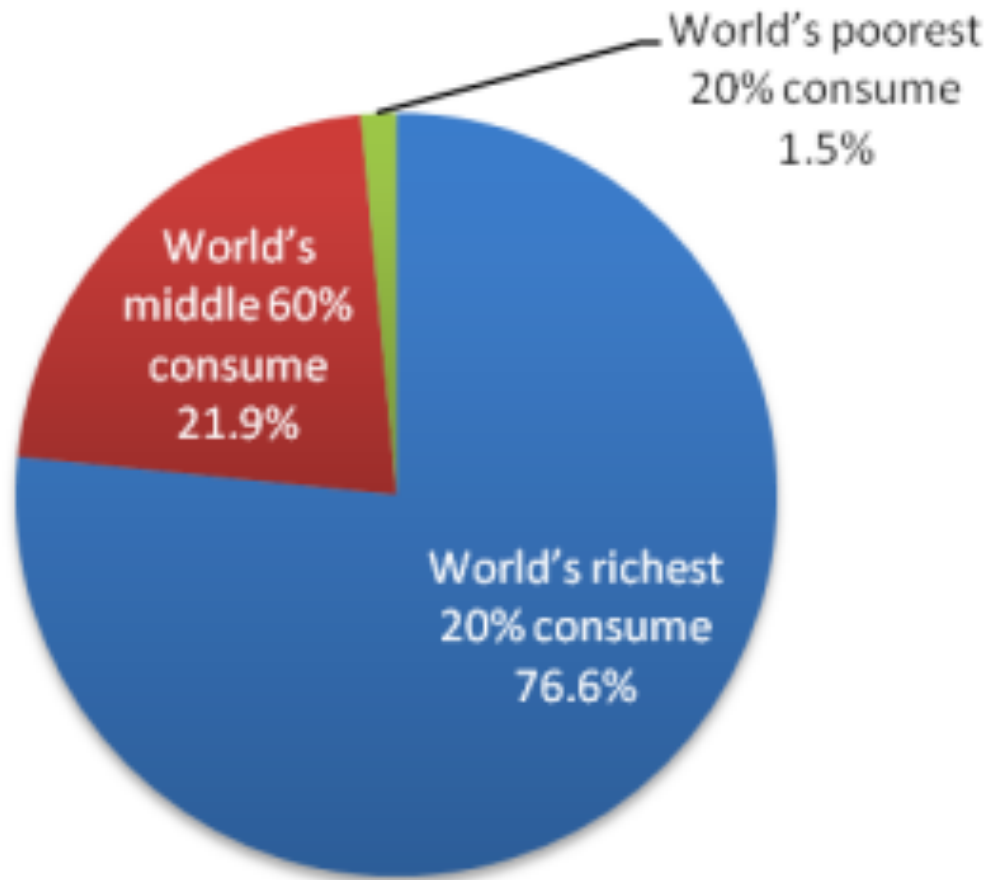
## TIME FOR THE SUSTAINABILITY TRANSITION



- The new planetary phase calls for a transition to sustainability.
- Transformation in the world-views and values that shape the organizing principles of human society.
- New ways of human solidarity and affinity with nature.
- A dramatic re-emphasis on the idea of a decent quality-of-life for all must prevail.



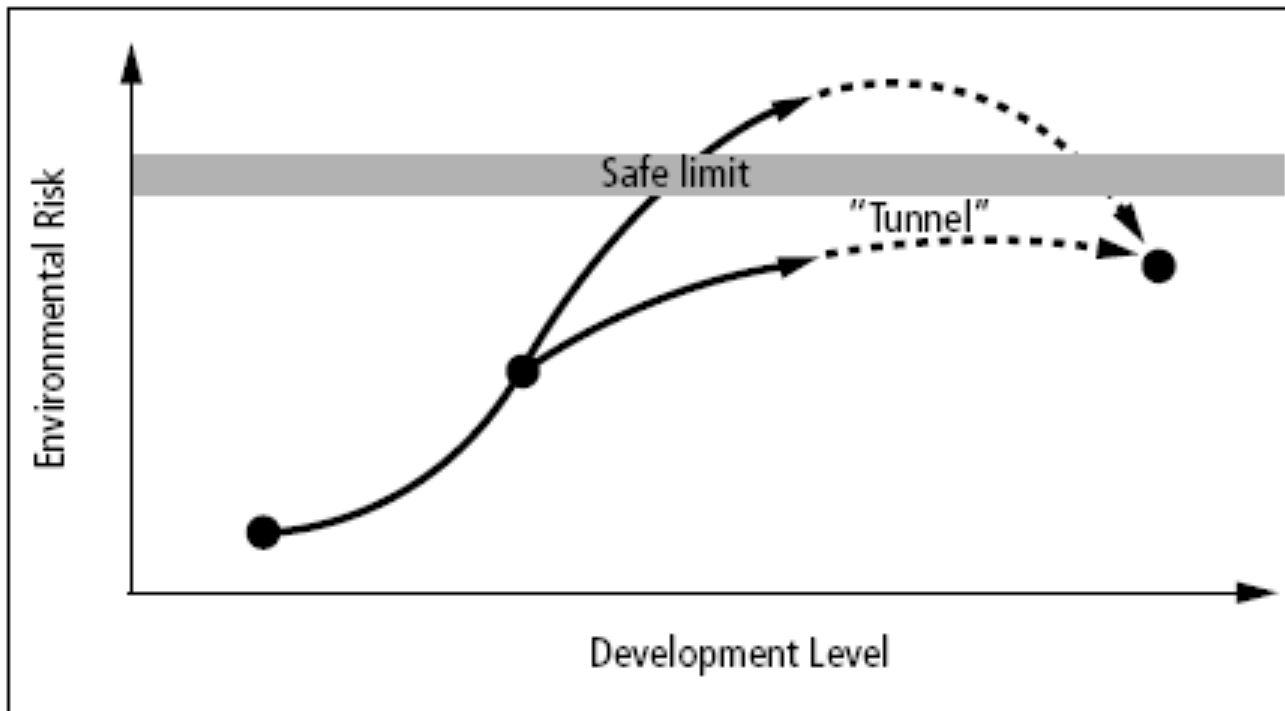
# ARCHITECTURE OF AN NEW WORLD ORDER



## Equity

- Foundation of a Sustainable Society
- Based on ethics, spirituality, and mindfulness
- Foundation on which institutional structures, governance, economic arrangements, and technological choices must be built.

# ARCHITECTURE OF AN NEW WORLD ORDER



Based on Munasinghe (1999).

## A New Ecological Order

- Wellbeing of all
- In harmony with nature
- Promotes socio-economic equity
- Enhances the cultural, material, economic, social, and political opportunities for all

# ARCHITECTURE OF AN NEW WORLD ORDER



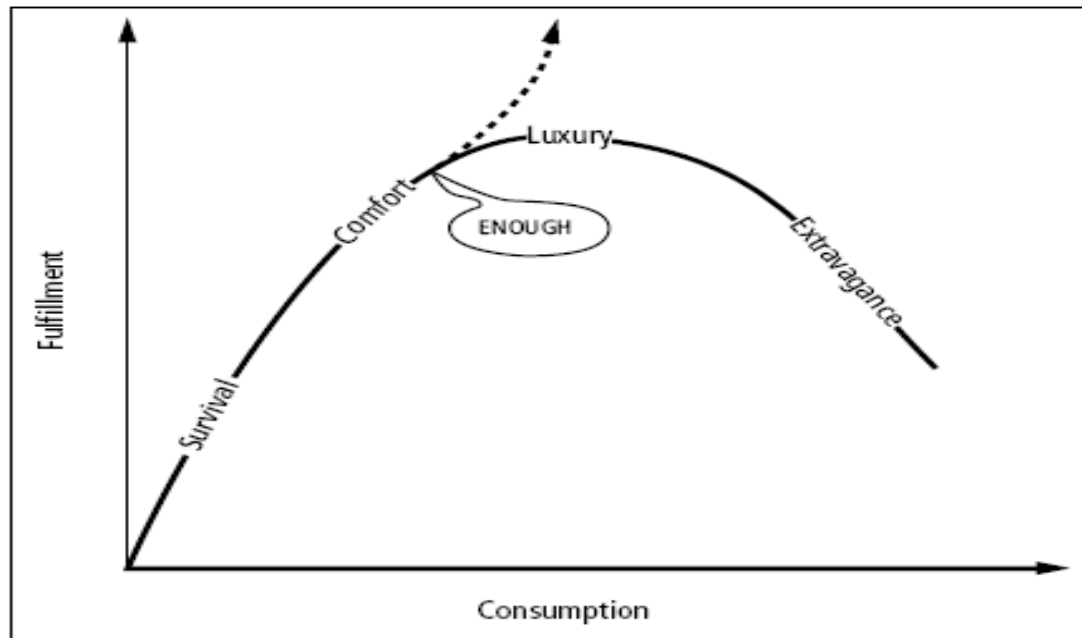
## A New Social Order

- Empowers each person and community to take part in decision-making affecting their lives
- A system that endorse the principle of subsidiarity in the redesign of global governance institutions.

**Note: Subsidiarity** is an organizing principle stating that a matter ought to be handled by the smallest, lowest, or least centralized authority capable of addressing that matter effectively.

# ARCHITECTURE OF AN NEW WORLD ORDER

Figure 7. Fulfillment Curve



Based on Dominguez and Robin (1992).

## A New Economic Order

- Not a Single Global Economy
  - Earths Integrity and Planetary Boundaries
  - Resilience-by-Localization
  - Equity, Dignity and Justice
  - Inclusive Governance
  - Beyond GDP – wellbeing, sufficiency & happiness
- 
- Internalizing Externalities – Precautionary & Polluter-Pays Principle
  - The Restitution of Natural Capital and Human Capital



## AN EMERGING GREEN ECONOMY



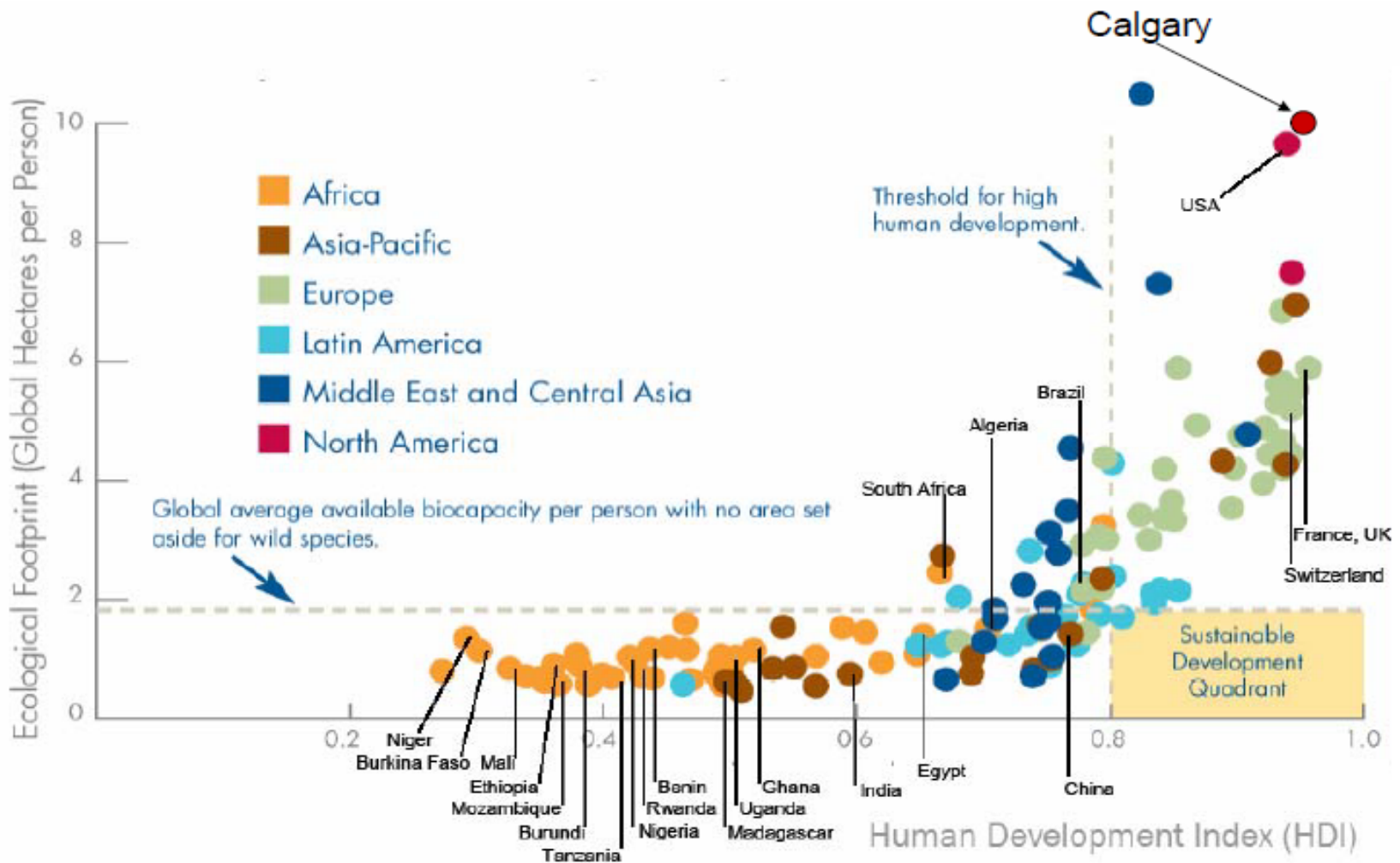
- Attempt to green the brown economy
- Focuses on patented, high technology based monopolistic market
- We need a networked system of decentralized, community-based, sustainable economies in a diversity of settings
- Should be founded on ecological integrity, social accountability and an economically equitable distribution.

# A GROWING CALL FOR LOCALIZATION

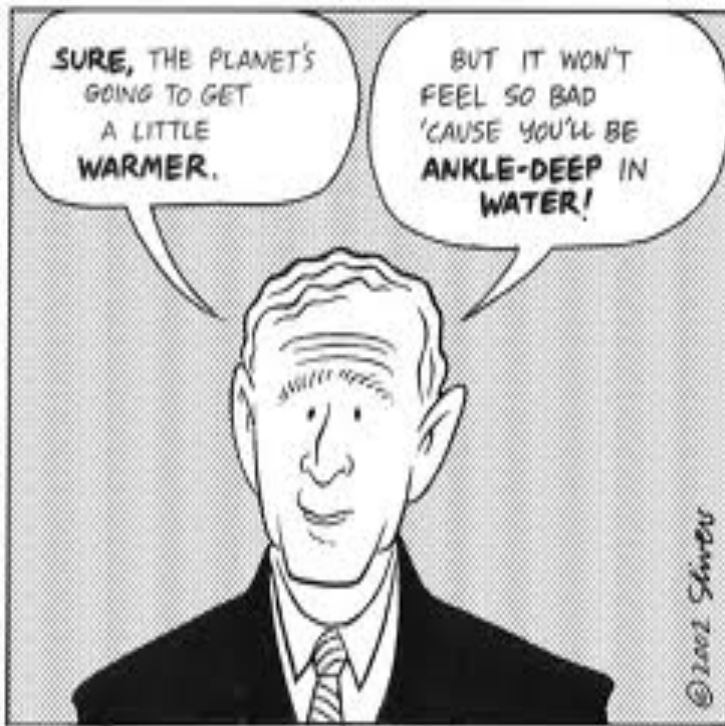


- Turning localism into a global movement is key to unpacking many of the complexities of globalization
- Linked to the principles of devolution, decentralization and subsidiarity.
- Localizing economies,
- Decentralizing governance,
- Advancing sustainable lifestyles and livelihoods

# STATUS OF GLOBAL SUSTAINABILITY



# RESPONSIBILITIES IN A NEW WORLD ORDER



## #1. BE A GLOBAL CITIZEN

- In a planetary phase of civilization, one needs to join the collective responsibility towards transitioning to a sustainable world.
- Work to ensure the wellbeing of all on the planet – not just self
- Cultivate a new sense of ethics, values and spirituality
- Be committed to changes of systems of learning, education and enlightenment.

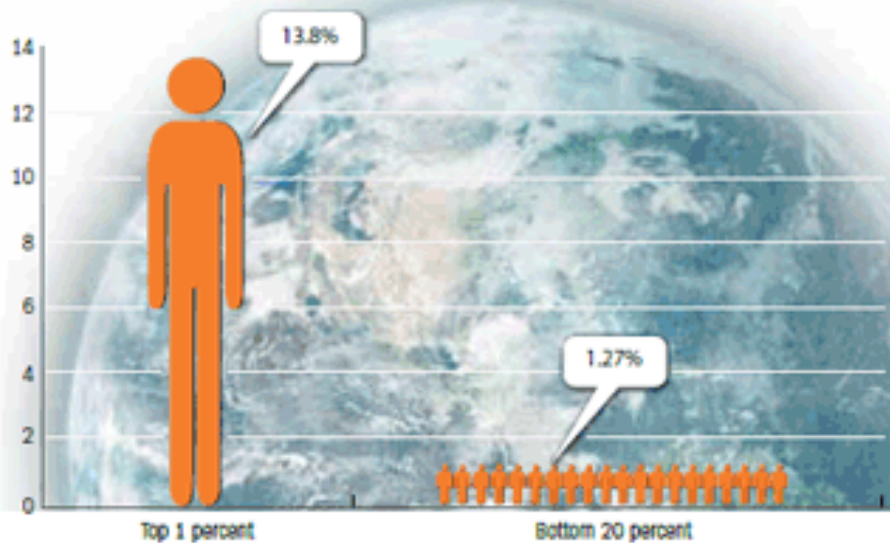


# RESPONSIBILITIES IN A NEW WORLD ORDER

Chart 3

## What a difference!

The richest 1 percent of people in the world receive nearly 14 percent of global income while the poorest 20 percent received just over 1 percent.  
(percent of global income)



Sources: World Income Distribution database; and author's calculations.  
Note: Data are for 2005.

## #2: TO BE SOCIALLY RESPONSIBLE

- Promotes socio-economic equity & wellbeing amongst all people,
- Live consciously to ensure cultural, material, economic, social, and political opportunities for all
- Act democratically to provide space for each person and community to take part in decision-making affecting their lives

# RESPONSIBILITIES IN A NEW WORLD ORDER



## #3. BE A ECOLOGICALLY RESPONSIBLE

- To know and live within the limits, boundaries and capacities of the planet;
- Consume and produce consciously and responsibly;

# RESPONSIBILITIES IN A NEW WORLD ORDER



## #4. BE ETHICAL, JUST AND FAIR

- Conduct activities in a way that is fair, just and ethical

# RESPONSIBILITIES IN A NEW WORLD ORDER

## #5. BE A MINDFUL



- The role of the citizen in this new planetary phase of civilization is to advance global sustainability
- Towards changing “unsustainable consumption and production habits” and adopt “sustainable lifestyles and livelihoods”.
- Promoting an “equity” based world order

- Catalyzing the move from mere “**efficiency**” focus to ‘**sufficiency**’ based ‘sustainable development’ paradigms
- Help replacing the growth based economic development model with “**sustainable economies**” based prosperity model
- Commitment to creating ‘**wellbeing & happiness for all**’
- Cultivating ‘**mindfulness**’ within yourself and amongst colleagues and community





**Imagine All the People - Be Mindful – Be the Change!**

## Uchita de Zoysa



**Global Coordinator - The Widening Circle (TWC)**

Web: [www.wideningcircle.org](http://www.wideningcircle.org)

**TWC Global Centre** - 253/10 Stanley Thilakarathne  
Mawatha, Nugegoda, Sri Lanka.

Tel: +94 11 2768459 Mobile: +94777372206

Email: [uchitadezoysa@twc.org](mailto:uchitadezoysa@twc.org) Skype: uchita.twc

**TWC North America Hub** - 11 Arlington Street, Boston,  
MA 02116-3411 USA.

Tel: +1 617 265 4000

**Chairman - Global Sustainability Solutions (GLOSS)**

web: [www.glossolutions.com](http://www.glossolutions.com)

**Executive Director - Centre for Environment & Development (CED)**

web: <http://centreforenviroinmentdevelopment.blogspot.com/>

**Facilitator – Peoples Sustainability Treaties**

Web: <http://sustainabilitytreaties.org/>

Address - 253/10 Stanley Thilakarathne Mawatha, Nugegoda, Sri Lanka.

Tel: +94 11 2768459 Mobile: +94777372206

email: [uchita@stnet.lk](mailto:uchita@stnet.lk) skype: uchita.de.zoysa