



# **INSTITUTIONAL PROFILE**

**September 2009**

Approved for submission by:

A handwritten signature in black ink, appearing to read "Peter P. Mercer", is written over a horizontal line.

Dr. Peter P. Mercer  
President, Ramapo College of New Jersey

*New Jersey's Public Liberal Arts College*

# INSTITUTIONAL PROFILE, SEPTEMBER 2009

## Table of Contents

SECTION A: Institutional Narration Including Accreditation Status .....	1
SECTION B: Number of Students Served.....	2
SECTION C: Characteristics of Undergraduate Students .....	5
SECTION D: Undergraduate Degrees Conferred.....	9
SECTION E: Student Outcomes.....	10
SECTION F: Faculty Characteristics.....	13
SECTION G: Characteristics of the Trustees .....	14
SECTION H: Degree and Certificate Programs .....	15
SECTION I: Grants and Research Activities.....	16
SECTION J: Capital Projects.....	17

# Ramapo College of New Jersey

## ***A. INSTITUTIONAL NARRATION INCLUDING ACCREDITATION STATUS***

### ***Institutional Profile***

Ramapo College of New Jersey is sometimes mistaken for a private college. This is, in part, due to its unique interdisciplinary academic structure, its size of over 5,800 students, and its pastoral setting in the foothills of the Ramapo Mountains on the New Jersey/New York border.

Established in 1969, Ramapo College offers bachelor's degrees in the arts, business, humanities, social sciences and the sciences, as well as in professional studies, which include nursing and social work. In addition, Ramapo College offers courses leading to teacher certification at the elementary and secondary levels. The College also offers three graduate programs as well as articulated programs with the University of Medicine and Dentistry of New Jersey and New York Chiropractic College.

The Middle States Association of Colleges and Schools first accredited the College in 1975. Ramapo is up for re-accreditation in 2010. The process for applying for re-accreditation involves examining the college's programs and services within the context of the fourteen standards outlined in the Commission's Characteristics of Excellence and the college's own mission. The self study is a decennial process of self-evaluation for the purpose of institutional improvement and to attain or maintain accredited status with the Middle States Commission on Higher Education. Ramapo College was reaccredited in 1980, 1990, and 2000. National disciplinary associations and State entities have also accredited certain Ramapo programs, including Chemistry (American Chemical Society), Nursing (National League for Nursing and N.J. Board of Nursing), Social Work (Council on Social Work Education), and Teacher Education (N.J. State Department of Education). The Anisfield School of Business application for AACSB (Association for the Advancement of Collegiate Schools of Business) accreditation candidacy was accepted in October 2007.

Undergraduate students choose to concentrate their studies in one of five schools with more than 700 course offerings and 40 academic programs. Ramapo College boasts an average student/faculty ratio of 18:1 and average class size of 23, affording students the opportunity to develop close ties to the College's exceptional faculty.

The College's mission is focused on the four "pillars" of a Ramapo education: international, intercultural, interdisciplinary and experiential, all of which are incorporated throughout the curriculum and extracurricular. The international mission is further accomplished through a wide range of study abroad and student exchange links with institutions all over the world through the New Jersey State Consortium for International Studies (NJSCIS). Additional experiential programs include internships, co-op, and service learning.

A campus-wide building program during recent years has resulted in the completion of the Anisfield School of Business academic facility, a central feature of the main entrance to the campus; the Bill Bradley Sports and Recreation Center, with its 2,200-seat arena, fitness center, climbing wall, track and dance/aerobics studio; the Overlook and Laurel residence halls and the Village apartment complex. The Angelica and Russ Berrie Center for Performing and Visual Arts, completed in 1999, houses performance theaters, art galleries, and specialized spaces devoted to fine arts, computer art, photography, theater, dance, and music.

# Ramapo College of New Jersey

## B. NUMBER OF STUDENTS SERVED

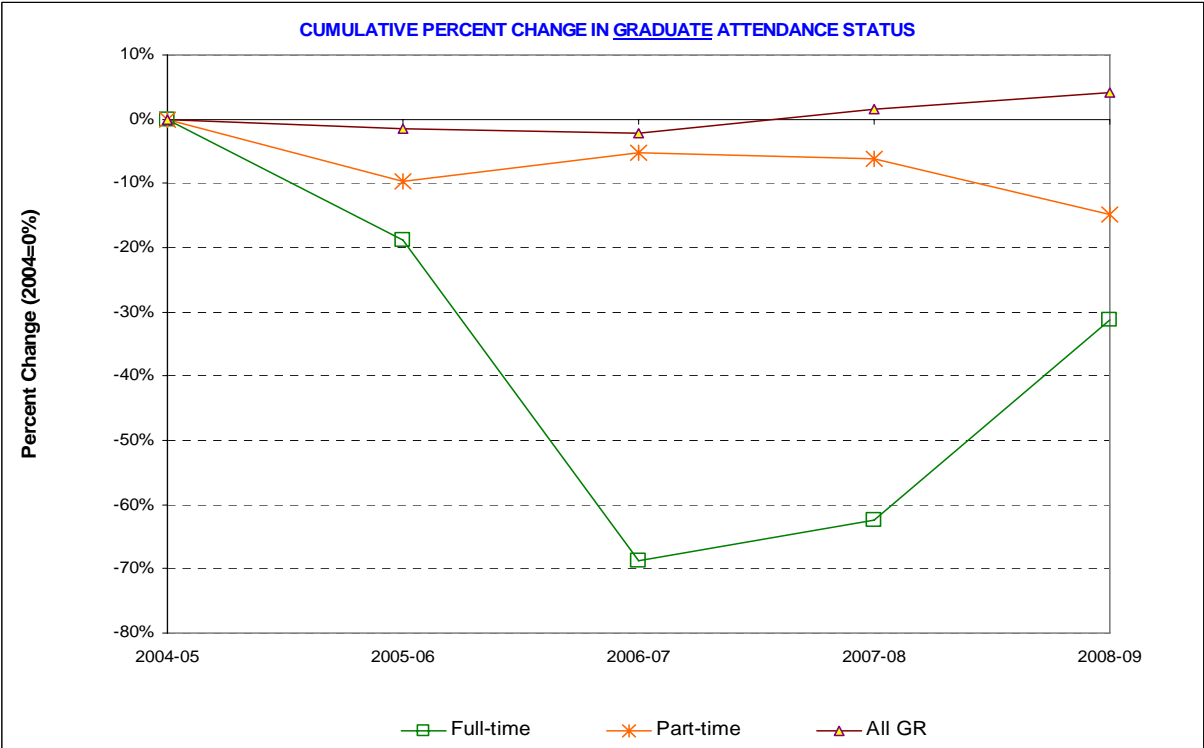
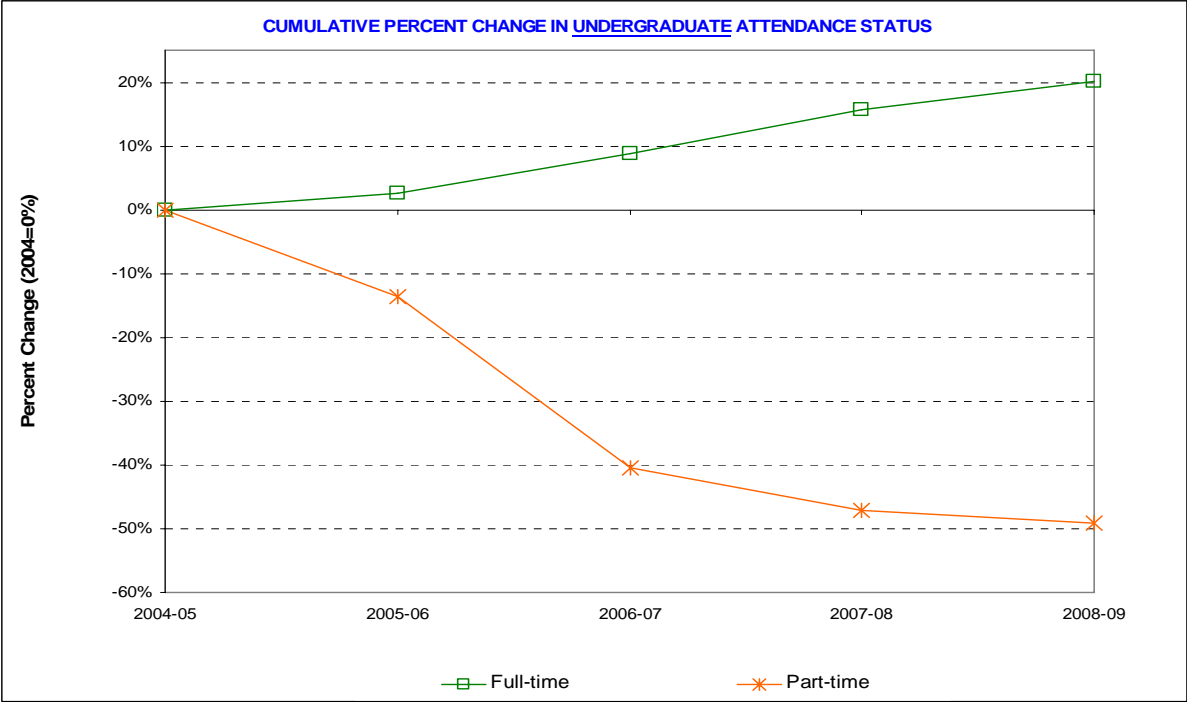
### B1 - Number of undergraduates by attendance status

### B2 - Number of graduates by attendance status

The number of undergraduates enrolled has increased 5.4% over the past five-years. The time status characteristics of this student population have changed considerably; the full-time student population has increased 20% and the part-time has decreased 49%. Graduate enrollments, over the same period of time, decreased 15.6%.

Enrollment by Attendance Status, Fall 2004 to Fall 2008												
Undergraduate Students	Fall 2004		Fall 2005		Fall 2006		Fall 2007		Fall 2008		Pct. Change	Pct. Change
	No.	Pct.	No.	Pct.	No.	Pct.	No.	Pct.	No.	Pct.	04 to 08	07 to 08
Full-time	4,146	78.6	4,254	81.3	4,514	87.0	4,795	88.9	4,984	89.6%	20.2%	3.9%
Part-time	1,132	21.4	979	18.7	674	13.0	598	11.1	577	10.4%	-49.0%	-3.5%
Total	5,278		5,233		5,188		5,393		5,561		5.4%	3.1%
Graduate Students	Fall 2004		Fall 2005		Fall 2006		Fall 2007		Fall 2008		Pct. Change	Pct. Change
	No.	Pct.	No.	Pct.	No.	Pct.	No.	Pct.	No.	Pct.	04 to 08	07 to 08
Full-time	16	4.7%	13	4.3%	5	1.6%	6	1.9%	11	3.8%	-31.3%	83.3%
Part-time	323	95.3%	292	95.7%	306	98.4%	303	98.1%	275	96.2%	-14.9%	-9.2%
Total	339		305		311		309		286		-15.6%	-7.4%
All Students	Fall 2004		Fall 2005		Fall 2006		Fall 2007		Fall 2008		Pct. Change	Pct. Change
	No.	Pct.	No.	Pct.	No.	Pct.	No.	Pct.	No.	Pct.	04 to 08	07 to 08
Full-time	4,162	74.1%	4,267	77.0%	4,519	82.2%	4,801	84.2%	4,995	85.4%	20.0%	4.0%
Part-time	1,455	25.9%	1,271	23.0%	980	17.8%	901	15.8%	852	14.6%	-41.4%	-5.4%
Total	5,617		5,538		5,499		5,702		5,847		4.1%	2.5%

# Ramapo College of New Jersey



# Ramapo College of New Jersey

## B3 - Number of non-credit students served

In fall 2008, the number of students taking non-credit courses was 368.

## B4 - Unduplicated number of students for entire academic year

Unduplicated headcount enrollment can provide a more comprehensive picture of students served in credit courses. This number reflects the total of all students, counted only once, enrolled in the institution during any of the terms of the year, regardless of course load.

<b>Unduplicated Headcount Enrollment, FY 2008</b>			
	<b>Headcount</b>	<b>Credit Hours</b>	<b>FTE</b>
Undergraduate	6,314	162, 141	5,405
Graduate	406	3,692	154
Total	6,720	165,833	5,559

# Ramapo College of New Jersey

## C. CHARACTERISTICS OF UNDERGRADUATE STUDENTS

### C1 - Mean math, reading and writing SAT scores

In fall 2008, Ramapo College of New Jersey enrolled 879 first-time, full-time freshmen (FTFTF). Of these, 75% (n=657) were Regular Admits, 9% (n=82) were EOF students, and 16% (n=140) were Special Admits. In fall 2004, Ramapo enrolled 755 FTFTF. Of these 2004 FTFTF enrollees, 81% (n=610) were Regular Admits, 9% (n=69) were EOF students, and 10% (n=76) were Special Admits. Since fall 2004 the total number of FTFTF enrolled at the College has increased 16%.

Average SAT Scores of Fall 2008 Full-Time Freshman Class (Regular Admits, EOF Admits, Special Admits, and Total Class)				
	SAT Math	SAT Reading	Combined Math/Reading	SAT Writing
Regular Admits	585	565	1,150	566
EOF Admits	467	446	913	444
Special Admits	480	464	944	478
All Admits	557	538	1,095	540

### C2 – Enrollment in remediation courses by subject area

Placement Tests are a way to ensure appropriate enrollment in first year courses that will match students' knowledge and skills. The test used at Ramapo College is the College Board's ACCUPLACER Program with online delivery.

#### First-time, Full-time (FTFTF) students enrolled in remediation in Fall 2008

Total Number of FTFTF Students	Number of FTFTF Students Enrolled in One or More Remedial Courses	Percent of FTFTF Enrolled in One or More Remedial Course
879	308	35.0%

#### FTFTF enrolled in remediation remediation in fall 2008 by subject area

<u>Subject Area</u>	Number of FTFTF Enrolled	Percent of all FTFTF Enrolled
Reading	83	9.4%
Writing	87	9.9%
Math Computation	202	23.0%
Elementary Algebra	38	4.3%

# Ramapo College of New Jersey

## C3 – Enrollment by race/ethnicity, sex and age

In fall 2008, Ramapo College enrolled 5,561 degree- and non-degree-seeking undergraduates.

Undergraduate Enrollment by Race/Ethnicity, Fall 2008															
	White		Black,		Hispanic		Asian		Amer.Ind.		Non-Res. Alien		Missing	Total	
	#	%	#	%	#	%	#	%	#	%	#	%	#	#	%
Full-Time	3,886	78.0	299	6.0	443	8.9	224	4.5	14	0.3	111	2.2	7	4,984	100
Part-Time	413	71.6	41	7.1	34	5.9	36	6.2	2	0.3	47	8.1	4	577	100
<b>Total</b>	<b>4,299</b>	<b>77.3</b>	<b>340</b>	<b>6.1</b>	<b>477</b>	<b>8.6</b>	<b>260</b>	<b>4.7</b>	<b>16</b>	<b>0.3</b>	<b>158</b>	<b>2.8</b>	<b>11</b>	<b>5,561</b>	<b>100</b>

Over the five year period overall enrollment increased 5.4% and since fall 2007 3.1%.

Undergraduate Enrollment by Race/Ethnicity, Fall 2004 to Fall 2008												
	Fall 2004		Fall 2005		Fall 2006		Fall 2007		Fall 2008		Pct. Change 04 to 08	Pct. Change 07 to 08
	No.	Pct.	No.	Pct.	No.	Pct.	No.	Pct.	No.	Pct.		
Amer. Ind.	18	0.3	18	0.3	16	0.3	16	0.3	16	0.3	-11.1	0.0
Asian	278	5.3	261	5.0	257	5.0	265	4.9	291	5.2	4.7	9.8
Black	349	6.6	354	6.8	332	6.4	338	6.3	356	6.4	2.0	5.3
Hispanic	418	7.9	417	8.0	431	8.3	469	8.7	491	8.8	17.5	4.7
White	4,215	79.9	4,183	79.9	4,152	80.0	4,305	79.8	4,396	79.2	4.3	2.1
Missing	0	N/A	0	N/A	0	N/A	0	N/A	11	N/A	N/A	N/A
<b>Total</b>	<b>5,278</b>		<b>5,233</b>		<b>5,188</b>		<b>5,393</b>		<b>5,561</b>		<b>5.4</b>	<b>3.1</b>



## Ramapo College of New Jersey

Undergraduate enrollment by sex in fall 2008 was approximately 59% female and 41% male. The percentage of male and female enrolled students has remained stable over the past five year period.

Undergraduate Enrollment by Sex, Fall 2008						
	Female		Male		Total	
	#	%	#	%	#	%
Full-Time	2,914	58.5	2,070	41.5	4,984	100
Part-Time	357	61.9	220	38.1	577	100
<b>Total</b>	<b>3,271</b>	<b>58.8</b>	<b>2,290</b>	<b>41.2</b>	<b>5,561</b>	

Undergraduate Enrollment by Sex, Fall 2004 to Fall 2008												
	Fall 2004		Fall 2005		Fall 2006		Fall 2007		Fall 2008		Pct. Change 04 to 08	Pct. Change 07 to 08
	No.	Pct.	No.	Pct.	No.	Pct.	No.	Pct.	No.	Pct.		
Female	3,139	59.5	3,139	60.0	3,088	59.5	3,222	59.7	3,271	58.8	4.2	1.5
Male	2,139	40.5	2,094	40.0	2,100	40.5	2,171	40.3	2,290	41.2	7.1	5.5
<b>Total</b>	<b>5,278</b>		<b>5,233</b>		<b>5,188</b>		<b>5,393</b>		<b>5,561</b>		<b>5.4</b>	<b>3.1</b>

Traditional students (less than 25 years of age) account for 90% of the undergraduate student population. In fall 2004 80% of students were less than 25 years of age. Traditional student enrollment has increased 10 percentage points over the five year period.

Undergraduate Enrollment by Age, Fall 2008												
		LT 18	18-19	20-21	22-24	25-29	30-34	35-39	40-49	50-64	65+	Total
		Full-time	#	7	1,634	2,071	967	190	34	18	45	18
	Pct	0.1	32.8	41.6	19.4	3.8	0.7	0.4	0.9	0.4	0.0	100
Part-time	#	25	41	140	124	53	63	77	40	14	0	577
	Pct	4.3	7.1	24.3	21.5	9.2	10.9	13.3	6.9	2.4	0	100
<b>Total</b>	#	<b>32</b>	<b>1,675</b>	<b>2,211</b>	<b>1,091</b>	<b>243</b>	<b>97</b>	<b>95</b>	<b>85</b>	<b>32</b>	<b>0</b>	<b>5,561</b>
	Pct	<b>0.6</b>	<b>30.1</b>	<b>39.8</b>	<b>19.6</b>	<b>4.4</b>	<b>1.7</b>	<b>1.7</b>	<b>1.5</b>	<b>0.6</b>	<b>0.0</b>	<b>100</b>

Undergraduate Enrollment by Age, Fall 2004 to Fall 2008												
	Fall 2004		Fall 2005		Fall 2006		Fall 2007		Fall 2008		Pct. Change 04 to 08	Pct. Change 07 to 08
	No.	Pct.	No.	Pct.	No.	Pct.	No.	Pct.	No.	Pct.		
Less Than 20	1,435	27.2	1,446	27.6	1,463	28.2	1,617	30.0	1,701	30.7	19.0	5.2
20 to 24	2,778	52.6	2,857	54.6	2,953	56.9	3,070	56.9	3,302	59.4	18.9	7.6
25 to 29	414	7.8	356	6.8	310	6.0	303	5.6	243	4.4	-41.3	-19.8
30 to 39	301	5.7	266	5.1	219	4.2	193	3.6	192	3.5	-36.2	-0.5
40 and Over	350	6.6	308	5.9	243	4.7	210	3.9	117	2.1	-66.6	-44.3
Missing	0	N/A	0	N/A	0	N/A	0	N/A	0	N/A	N/A	N/A
<b>Total</b>	<b>5,278</b>		<b>5,233</b>		<b>5,188</b>		<b>5,393</b>		<b>5,561</b>		<b>5.4</b>	<b>3.1</b>

# Ramapo College of New Jersey

## C4 – Numbers of students receiving financial assistance

During FY 2008, Ramapo’s undergraduates received financial aid from federal, state, and/or college sources. Aid took several forms, including grants and scholarships, loans, and waivers. College grants, scholarships and waivers were substantial, amounting to over 6 million dollars during the fiscal year.

<b>Financial Aid from State-Funded Programs, FY 2008</b>					
	<b>Recipients</b>	<b>Awards</b>	<b>Dollars</b> ( <b>\$</b> )	<b>Recipient</b> ( <b>\$</b> )	<b>Award</b> ( <b>\$</b> )
TAG	839	1,558	3,718,608	4,432	2,387
EOF	270	511	346,233	1,282	678
Bloustein Scholars	159	312	144,990	912	465
Urban Scholars	52	101	46,965	903	465
NJCLASS Loans		465	5,003,350		10,760
NJ Stars II (2007)	43		157,168	3,655	
OSRP	90		229,121	2,546	

## C5 – Percentage of students who are New Jersey residents

Of Ramapo’s 879 FTFTF cohort, 95.4% (n=839) were New Jersey residents, 3.0% (n=26) were from other U.S. States, 1.6% (n=14) were from a foreign country.

<b>First-time Full-time Undergraduates Fall 2008</b>			
<b>By State of Residence</b>			
	New Jersey	839	95.4%
	Other States/US Territories	26	3.0%
	Foreign Countries	14	1.6%
		879	

# Ramapo College of New Jersey

## **D. UNDERGRADUATE DEGREES CONFERRED**

### **D1 – By race/ethnicity and sex**

<b>Degrees Conferred by Race/Ethnicity, FY 2008</b>						
	Baccalaureate		Masters		Total	
	#	%	#	%	#	%
Amer. Ind./Nat. Al.	0	0.0	0	0.0	0	0.0
Asian/Pacific Is.	50	4.1	3	2.6	53	3.9
Black, non-Hispanic	59	4.8	6	5.2	65	4.8
Hispanic	82	6.6	1	0.9	83	6.1
White, non-Hispanic	1,010	81.8	105	90.5	1,115	82.6
Non-Resident Alien	33	2.7	1	0.9	34	2.5
<b>Total</b>	<b>1,234</b>		<b>116</b>		<b>1,350</b>	

The difference in degrees conferred in AY 2007-2008 between female and male students was 30 percentage points; 65% of degrees were awarded to female students and 35% male students.

<b>Degrees Conferred by Sex, FY 2008</b>						
	Baccalaureate		Masters		Total	
	#	%	#	%	#	%
Female	776	62.9	96	82.8	872	65.0
Male	458	37.1	20	17.2	478	35.0
<b>Total</b>	<b>1,234</b>	<b>90.0</b>	<b>116</b>	<b>10.0</b>	<b>1,350</b>	

### **D2 – By general field**

<b>Degrees Conferred by General Field, FY 2008</b>			
IPEDS CIP Code Major Category	Bachelor	Master	Total
	#	#	#
03 Natural Resources & Conservation	19	0	19
05 Area Studies	28	0	28
09 Communications	133	0	133
11 Computer Science	43	0	43
13 Education	0	84	84
16 Foreign Languages	85	0	85
22 Legal Studies	69	0	69
24 Liberal Arts & Sciences	15	4	19
26 Biological & Biomedical Sciences	81	0	81
27 Mathematics	22	0	22
30 Multi/Interdisciplinary Studies	3	0	3
40 Physical Sciences	7	0	7
42 Psychology	167	0	167
44 Public Administration	29	0	29
45 Social Sciences	58	0	58
50 Visual/Performing Arts	87	0	87
51 Health Professions	102	22	124
52 Business/Management	222	6	228
54 History	64	0	64
<b>TOTAL</b>	<b>1,234</b>	<b>116</b>	<b>1,350</b>

# Ramapo College of New Jersey

## ***E. STUDENT OUTCOMES***

### **E1 – Graduation rates by race/ethnicity and income**

Since 1997 the six-year graduation rate increased 16.2 percentage points, the five-year rate increased 18.4 percentage points and the 4-year rate increased 24.2 percentage points.

<b>FULL-TIME, FIRST-TIME FRESHMEN COHORT</b>								
<b>CUMULATIVE GRADUATION RATES</b>								
Fall of Entry	Sub-Cohorts	Original Size	Four-Year Cumulative Graduation		Five-Year Cumulative Graduation		Six-Year Cumulative Graduation	
1997	Amer. Ind.	1	0	0.0%	0	0.0%	0	0.0%
	Asian	30	10	33.3%	17	56.7%	17	56.7%
	Black	51	10	19.6%	19	37.3%	23	45.1%
	Hispanic	33	5	15.2%	13	39.4%	15	45.5%
	White	339	106	31.3%	173	51.0%	189	55.8%
	<b>Total</b>		<b>454</b>	<b>131</b>	<b>28.9%</b>	<b>222</b>	<b>48.9%</b>	<b>244</b>
1998	Amer. Ind.	2	0	0.0%	1	50.0%	1	50.0%
	Asian	27	12	44.4%	18	66.7%	19	70.4%
	Black	30	8	26.7%	14	46.7%	16	53.3%
	Hispanic	63	17	27.0%	35	55.6%	40	63.5%
	White	350	133	38.0%	199	56.9%	218	62.3%
	<b>Total</b>		<b>472</b>	<b>170</b>	<b>36.0%</b>	<b>267</b>	<b>56.6%</b>	<b>294</b>
1999	Amer. Ind.	0	0	0.0%	0	0.0%	0	0.0%
	Asian	26	10	38.5%	16	61.5%	18	69.2%
	Black	56	18	32.1%	25	44.6%	26	46.4%
	Hispanic	50	13	26.0%	22	44.0%	25	50.0%
	White	396	162	40.9%	225	56.8%	242	61.1%
	<b>Total</b>		<b>528</b>	<b>203</b>	<b>38.4%</b>	<b>288</b>	<b>54.5%</b>	<b>311</b>
2000	Amer. Ind.	2	0	0.0%	0	0.0%	1	50.0%
	Asian	31	13	41.9%	17	54.8%	18	58.1%
	Black	49	18	36.7%	26	53.1%	27	55.1%
	Hispanic	53	15	28.3%	25	47.2%	28	52.8%
	White	503	238	47.3%	334	66.4%	345	68.6%
	<b>Total</b>		<b>638</b>	<b>284</b>	<b>44.5%</b>	<b>402</b>	<b>63.0%</b>	<b>419</b>
2001	Amer. Ind.	0	0	0.0%	0	0.0%	0	0.0%
	Asian	35	16	45.7%	21	60.0%	21	60.0%
	Black	44	14	31.8%	23	52.3%	25	56.8%
	Hispanic	58	22	37.9%	29	50.0%	32	55.2%
	White	491	252	51.3%	320	65.2%	329	67.0%
	<b>Total</b>		<b>628</b>	<b>304</b>	<b>48.4%</b>	<b>393</b>	<b>62.6%</b>	<b>407</b>
2002	Amer. Ind.	3	1	33.3%	1	33.3%	1	33.3%
	Asian	23	12	52.2%	12	56.5%	12	56.5%
	Black	58	32	55.2%	39	67.2%	42	72.4%
	Hispanic	69	20	28.9%	37	53.6%	37	53.6%
	White	531	298	56.1%	371	69.9%	386	72.6%
	<b>Total</b>		<b>684</b>	<b>363</b>	<b>53.1%</b>	<b>460</b>	<b>67.3%</b>	<b>478</b>

## Ramapo College of New Jersey

Graduation Rates of Fall 2002 Full-time First-time Freshmen by Income									
	Low Income *		Non-Low Income		Unknown		Total		
	Num	Pct	Num	Pct	Num	Pct	Num	Pct	
Fall 2002 Cohort	92		435		157		684		
Graduates after 4 Years	32	34.8	245	56.3	86	54.8	363	53.1	
Graduates after 5 Years	51	55.4	304	69.9	105	66.9	460	67.3	
Graduates after 6 Years	56	60.9	310	71.3	112	71.3	478	69.9	

\* Low Income is defined as student with a NJ Eligibility Index between 1 and 2,499.

### E2 – Third semester retention rates

Third Semester Retention of Full-time First-time Freshmen by Race/Ethnicity, Fall 2007 to Fall 2008														
	White		Black		Hispanic		Asian		American Ind.		Non-Res. Alien		Total	
	#	%	#	%	#	%	#	%	#	%	#	%	#	%
Retained	614	88.5	56	87.5	58	76.3	37	92.5	2	100%	3	12.5	770	85.6
Not Retained	80	11.5	8	12.5	18	23.7	3	7.5	0	0	21	87.5	130	14.4
Total	694		64		76		40		2		24		900	

Third Semester Retention of Full-time First-time Freshmen by Income								
	Low Income *		Non-Low Inc.		Unknown		Total	
	#	%	#	%	#	%	#	%
Retained	79	81.4%	543	88.3%	148	78.7%	770	85.6%
Not Retained	18	18.6%	72	11.7	40	21.3%	130	14.4%
Total	97	100.0%	615	100.0%	188	100.0%	900	100.0%

\* Low Income is defined as student with a NJ Eligibility Index less than 2,499.

# Ramapo College of New Jersey

## E3 – Entering undergraduates by admission status

New transfer student enrollment has increased 26.5 percentage points since fall 2004. Traditional student enrollment has increased 10 percentage points over the five year period.

<b>Entering Undergraduates by Admission Status and Attendance Status, Fall 2008</b>						
	<b>New Transfer</b>		<b>First-time</b>		<b>Total</b>	
	#	%	#	%	#	%
Full-time	564	37.1%	956	62.9%	1,520	100.0%
Part-time	57	29.2%	138	70.8%	195	100.0%
<b>Total</b>	<b>621</b>	<b>36.2%</b>	<b>1,094</b>	<b>63.8%</b>	<b>1,715</b>	<b>100.0%</b>

# Ramapo College of New Jersey

## F. FACULTY CHARACTERISTICS

### F1 – Full-time faculty by race/ethnicity, sex, and tenure status

Between 2004 and 2008, the number of full-time (tenured/non-tenured) faculty (175 to 199) increased 14 percentage points. The number of male faculty (103 to 108) increased approximately 5 percentage points, while the number of female faculty (72 to 91) increased approximately 26 percentage points.

<b>Full-Time Faculty by Race/Ethnicity, Sex, Tenure Status and Academic Rank</b>																
	White		Black		Hispanic		Asian		American Ind.		Alien		Race Unknown		Total	
	M	F	M	F	M	F	M	F	M	F	M	F	M	F	M	F
	#		#		#		#		#		#		#		#	
<b>Tenured</b>																
Professors	35	24					4				1				40	24
Associate Prof.	13	17	6	1		6	1				4	2			24	26
Assistant Prof.	5	2	1								1				7	2
sub-total	53	43	7	1	0	6	5	0	0	0	6	2	0	0	71	52
<b>Without Tenure</b>																
Professors															0	0
Associate Prof.	2	5		1		1						1		1	2	8
Assistant Prof.	26	21	1	1	1	2	2				5	6			35	31
sub-total	28	26	1	2	1	3	2	0	0	0	5	7	0	1	37	39
<b>Total</b>																
Professors	35	24	0	0	0	0	4	0	0	0	1	0	0	0	40	24
Associate Prof.	15	22	6	2	0	7	1	0	0	0	4	3	0	1	26	34
Assistant Prof.	31	23	2	1	1	2	2	0	0	0	6	6	0	0	42	33
TOTAL	81	69	8	3	1	9	7	0	0	0	11	9	0	1	108	91

### F2/F3 – Percentage of course sections taught by full-time faculty

<b>Percentage of Course Sections Taught by Full-time Faculty Fall 2008</b>						
Number of Course Sections	Taught by Full-time Faculty		Taught by Part-time Faculty		Taught by Others*	
	Number	Percent	Number	Percent	Number	Percent
850	567	66.7%	240	28.2%	43	5.1%
Number of Credit Hours	Taught by Full-time Faculty		Taught by Part-time Faculty		Taught by Others*	
	Number	Percent	Number	Percent	Number	Percent
3,410	2,277	66.7%	966	28.3%	167	4.9%
Note: Others includes Full-time Administrators and Teaching Assistants						

# Ramapo College of New Jersey

## ***G. CHARACTERISTICS OF THE TRUSTEES***

**G1 – Race/ethnicity and sex**

**G2 – List of trustees**

**G3 – URL of web pages with information on trustees**

<b>Race/Ethnicity and Gender of Governing Board, Fall 2009</b>								
	White	Black	Hispanic	Asian	Amer. Indian	Non-Res. Alien	Unknown	Total
Male	5	1	0	0	0	0	0	7
Female	1	1	1	0	0	0	0	3
<b>Total</b>	<b>6</b>	<b>2</b>	<b>1</b>	<b>0</b>	<b>0</b>	<b>0</b>	<b>0</b>	<b>10</b>

<b>Members of the Board of Governors and/or Trustees, Fall 2009</b>		
Name	Board Title	Affiliation
Rev. Dr. Vernon C. Walton	Chair	Senior Pastor, Mt. Calvary Baptist Church
Adam J. Sabath	Vice Chair	Owner, Advocacy Group
Sharon K. McGahee	Secretary	Attorney
Thomas A. Zelante	Immediate Past Chair	Attorney
Gail P. Brady		President GB Consulting
W. Peter McBride		President Real Estate Development Companies
Ester Suarez		Attorney
Edward Zarnock		Union Leader
Thomas Ng	Student Trustee	
Dr. Peter P. Mercer	Ex Officio	

The URL for Ramapo College's web site that including governing board information is:  
[www.ramapo.edu/administration/board/index.html](http://www.ramapo.edu/administration/board/index.html)



# Ramapo College of New Jersey

## ***H. DEGREE AND CERTIFICATE PROGRAMS, FALL 2008***

### **H1 – Degree and certificate programs**

<b>Degree and Certificate Programs</b>		
Undergraduate Majors	Undergraduate Minors	Graduate Programs
Accounting	African American Studies	Master of Science: Nursing
Allied Health	Anthropology	Master of Science: Educational Technology
American Studies	East Asian Studies	Master of Arts: Liberal Studies
Biochemistry	Biology	
Bioinformatics	Chemistry	
Biology	Computer Science	
Business Administration	Economics	
Chemistry	Environmental Studies	
Clinical Lab Science	Foreign Language	
Communication Arts	Gerontology	
Computer Science	History	
Contemporary Arts	International Business	
Economics	Judaic Studies	
Environmental Science	Latin American Studies	
Environmental Studies	Literature	
History	Mathematics	
Information Systems	Music	
Integrated Science Studies	Philosophy	
International Business	Physics	
International Studies	Political Science	
Law and Society	Psychology	
Literature	Public Policy	
Mathematics	Science, Technology and Society	
Music	Sociology	
Nursing	Substance Abuse	
Physics	Women's Studies	
Political Science		
Psychology		
Social Science		
Social Work	Gerontology Certificate Program	
Sociology	Substance Abuse Certificate Program	
Theater	Teacher Certification Program (elementary)	
Visual Arts	Teacher Certification Program (secondary)	

Ramapo College of New Jersey

***I. RESEARCH AND PUBLIC SERVICE ACTIVITIES***

<b>Major Research and Public Service Activities R&amp;D Expenditures: FY2008</b>	
Federally Financed Academic R&D Expenditures	\$756,485
Institutionally Financed Academic R&D Expenditures	\$78,515
Total Academic R&D Expenditures	\$835,000

# Ramapo College of New Jersey

## ***J. CAPITAL PROJECTS***

Over a five-year period, from FY 2004 through FY 2008, Ramapo College expended almost \$167 million on capital projects. During the five-year period, FY 2004 to FY 2008, the value of plant investment rose 90.3%.

<b>Expenditures on Capital Projects, FY 2004 through FY 2008</b>	
<b>Purpose of Expenditure</b>	<b>Amount Expended</b>
Renewal and Replacement	\$31,134,000
New Construction	\$135,717,000
<b>TOTAL</b>	<b>\$166,851,000</b>