

**SECTION VI:**

**STUDENT SERVICES**

2011 INSTITUTIONAL PROFILE

# CAHILL CENTER<sup>[1]</sup>

## COOPERATIVE EDUCATION

	06/07	07/08	08/09	09/10	10/11	Percent Change 06/07 to 10/11	Percent Change 09/10 to 10/11
Number of Employers	256	268	202	185	265	3.5%	43.2%
Number of Students:							
Female	157	167	135	127	181	15.3%	42.5%
Male	148	124	95	85	125	-15.5%	47.1%
Total Students	305	291	230	212	306	0.3%	44.3%
Dollars Earned	\$806,095	\$783,711	\$413,534	\$339,814	\$294,027	-63.5%	-13.5%
Credits Earned	1,250	1,164	920	848	1,224	-2.1%	44.3%

## CAREER SERVICES

	06/07	07/08	08/09	09/10	10/11	Percent Change 06/07 to 10/11	Percent Change 09/10 to 10/11
Course Participants	160	172	219	140	150	-6.3%	7.1%
Job Fair Participants	600	550	700	475	733	22.2%	54.3%

## STUDENT ASSISTANT PROGRAM

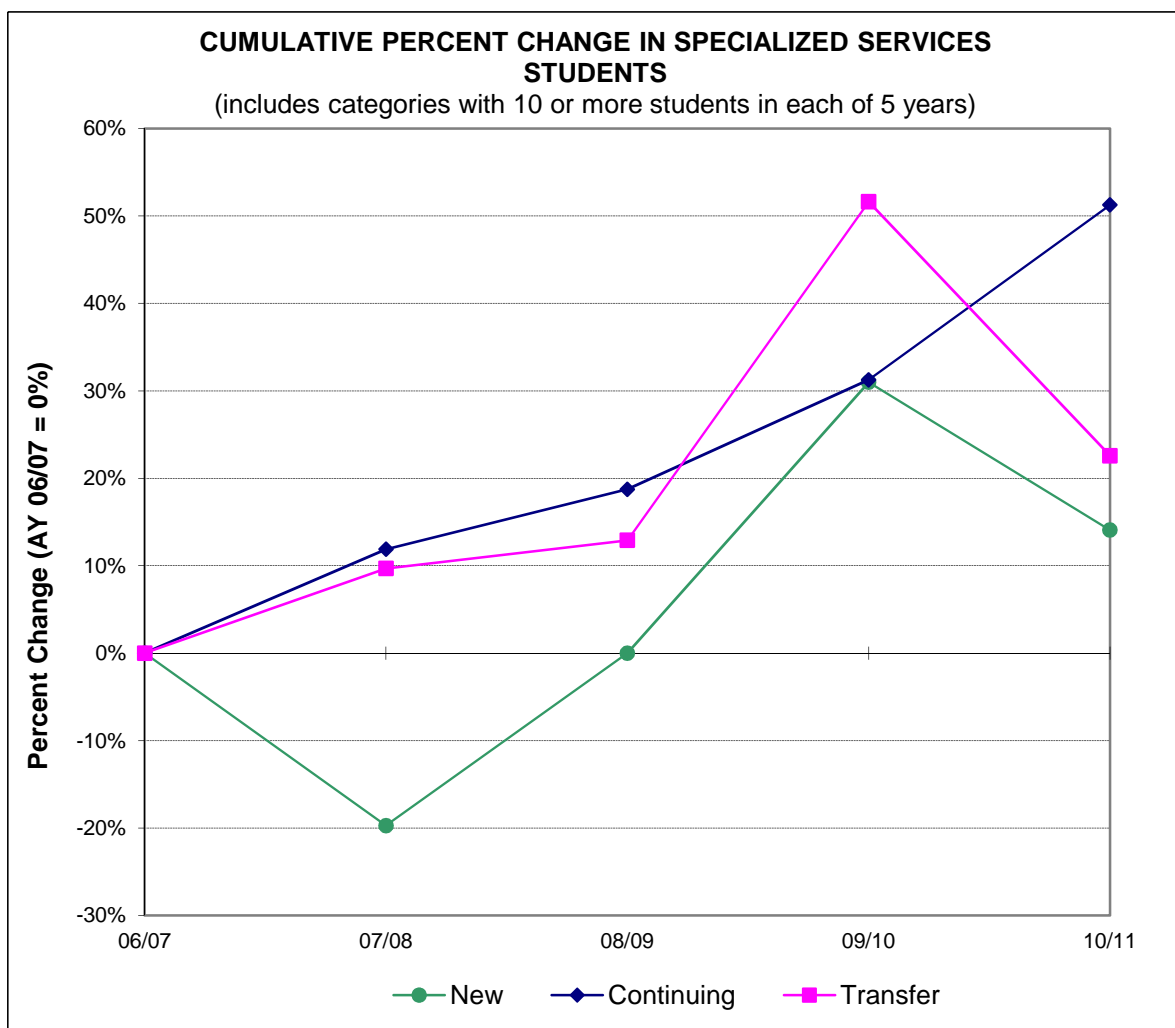
	06/07	07/08	08/09	09/10	10/11	Percent Change 06/07 to 10/11	Percent Change 09/10 to 10/11
Student Workers [2]	782	802	824	846	812	3.8%	-4.0%

[1] This information is not system generated. Data is self-reported by unit.

[2] The Cahill Center acquired responsibility in 2002 for managing students assigned to perform special projects for faculty.

## SPECIALIZED SERVICES <sup>[1]</sup>

Students	06/07	07/08	08/09	09/10	10/11	Percent Change	Percent Change
						06/07 to 10/11	09/10 to 10/11
New [2]	71	57	71	93	81	14.1%	-12.9%
Continuing	160	179	190	210	242	51.3%	15.2%
Transfer	31	34	35	47	38	22.6%	-19.1%
Re-Admits [3]	2	1	0	3	4	100.0%	33.3%
<b>Total</b>	<b>264</b>	<b>271</b>	<b>296</b>	<b>353</b>	<b>365</b>	<b>38.3%</b>	<b>3.4%</b>



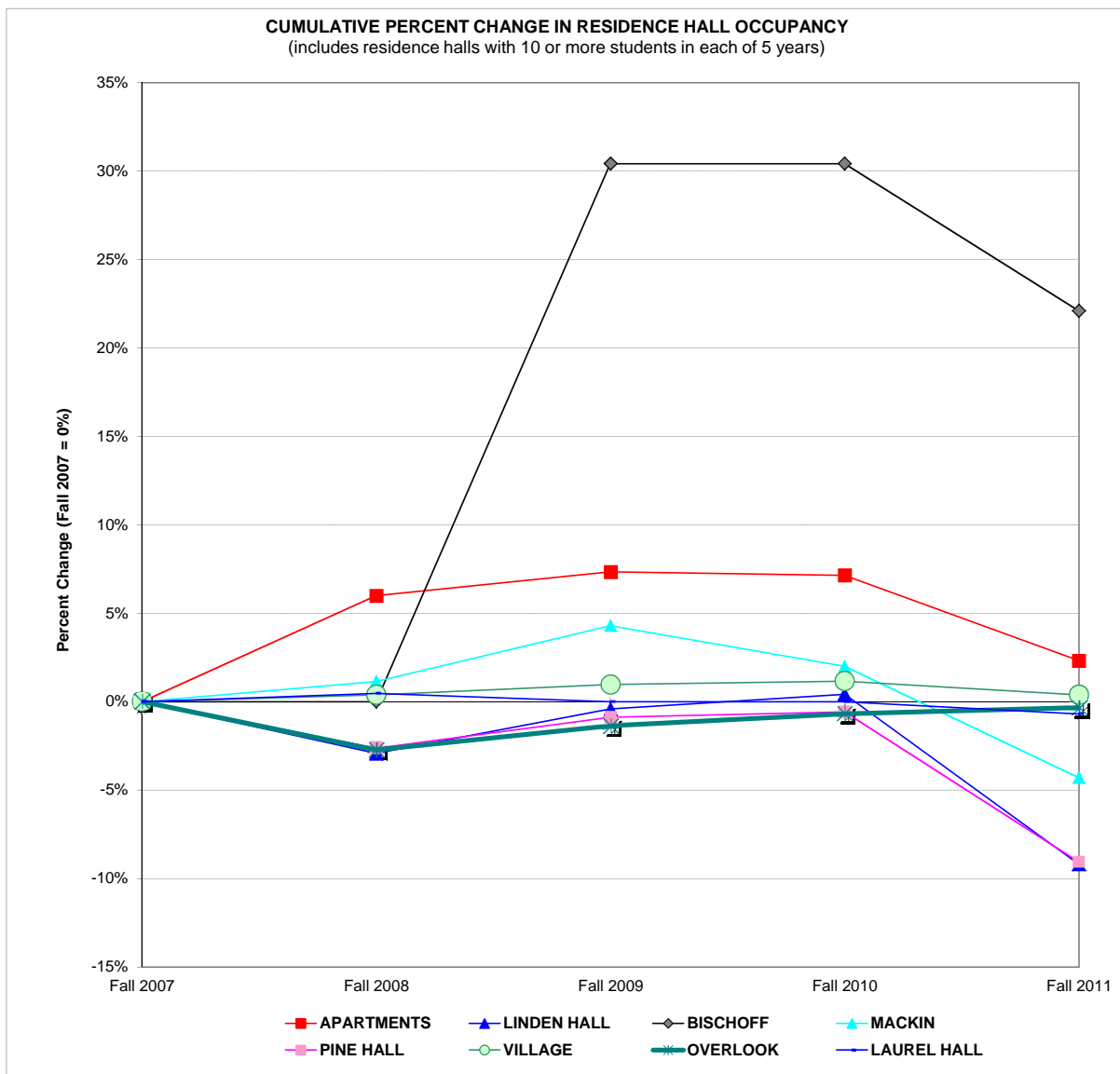
[1] This information is not system-generated. Data is self-reported by unit. Counts do not include non-matriculated students.

[2] Includes students already enrolled at Ramapo College for one or more semesters, but new to the Office of Specialized Services, and new first-time freshmen.

[3] The 09/10 readmit count includes 2 students who came back after graduation as post-graduate students and 1 returning undergrad.

FALL SEMESTER RESIDENCE HALL OCCUPANCY, 2007 TO 2011 <sup>[1]</sup>

	Fall 2007		Fall 2008		Fall 2009		Fall 2010		Fall 2011		Percent Change 07 to 11	Percent Change 10 to 11
	Number	Percent	Number	Percent	Number	Percent	Number	Percent	Number	Percent		
APARTMENTS	518	17.7%	549	18.3%	556	18.2%	555	18.2%	530	18.1%	2.3%	-4.5%
LINDEN HALL	239	8.2%	232	7.7%	238	7.8%	240	7.9%	217	7.4%	-9.2%	-9.6%
BISCHOFF <sup>[2]</sup>	240	8.2%	240	8.0%	313 <sup>[2]</sup>	10.3%	313	10.3%	293	10.0%	22.1%	-6.4%
MACKIN <sup>[2]</sup>	349	11.9%	353	11.8%	364	11.9%	356	11.7%	334	11.4%	-4.3%	-6.2%
PINE HALL	342	11.7%	333	11.1%	339	11.1%	340	11.2%	311	10.6%	-9.1%	-8.5%
OVERFLOW/HOTEL	-	-	59	2.0%	-	-	-	-	-	-	N/A	N/A
VILLAGE	517	17.7%	519	17.3%	522	17.1%	523	17.2%	519	17.7%	0.4%	-0.8%
THE OVERLOOK	294	10.0%	286	9.5%	290	9.5%	292	9.6%	293	10.0%	-0.3%	0.3%
LAUREL HALL	430	14.7%	432	14.4%	430	14.1%	430	14.1%	427	14.6%	-0.7%	-0.7%
<b>TOTAL</b>	<b>2,929</b>		<b>3,003</b>		<b>3,052</b>		<b>3,049</b>		<b>2,924</b>		<b>-0.2%</b>	<b>-4.2%</b>



[1] Occupancy as of the 10th day of the semester as reported in the Registrar's official file.

[2] Late 2008, Oak Hall was renamed Bischoff Hall and Maple Hall was renamed Mackin Hall.

[3] For fall 2009, Bischoff Hall suites were reconfigured to house TRIPLES on floors 3-5 and DBLS on floors 1 & 2.

**FINANCING FOR RESIDENCE LIFE, STUDENT CENTER, AND EDUCATIONAL PROJECTS <sup>[1] [2]</sup>**

Facilities Bond	Name	Outstanding	Outstanding	Outstanding	Outstanding	Outstanding	Year Paid in Full
		Principal Payments Jun-07 (000)	Principal Payments Jun-08 (000)	Principal Payments Jun-09 (000)	Principal Payments Jun-10 (000)	Principal Payments Jun-11 (000)	
<b>Residence Life</b>							
Series 1998G	Oak Hall/Pavilion	\$14,420	\$14,035	\$13,635	\$13,220	\$8,140	2028
Series 1999E [3]	Maple Hall/Pavilion Expansion	\$1,300	\$890	\$455	\$0	\$0	2009
Series 2001D [4]	The Village/Apt. Wiring	\$6,040	\$6,040	\$6,040	\$5,135	\$980	2014
Series 2002H [4]	Village Completion/Overlook	\$18,610	\$18,610	\$18,230	\$17,585	\$15,375	2032
Series 2003G [3]	Pine & Linden	\$7,875	\$6,540	\$5,175	\$3,775	\$2,325	2013
Series 2003H [3]	Oak Hall/Pavilion/Phase I Renov.	\$18,930	\$18,915	\$18,775	\$18,635	\$18,010	2029
Series 2004E [4]	Laurel Hall	\$10,575	\$10,575	\$10,575	\$10,575	\$10,397	2024
Series 2006I [4]	Advance Refunding of Bond Issues	\$80,326	\$80,326	\$80,296	\$80,067	\$79,836	2036
Series 2011A [5]	Advance Refunding of Bond Issues	\$0	\$0	\$0	\$0	\$9,139	2021
<b>Student Center</b>							
Series 1998H	Student Center Renovations	\$1,120	\$980	\$835	\$685	\$165	2013
Series 2002I [4]	Student Center Renovations	\$1,345	\$1,345	\$1,300	\$1,255	\$1,100	2032
Series 2003F	Student Center Annex	\$1,615	\$1,400	\$1,185	\$960	\$730	2013
Series 2006I [4]	Advance Refunding of Bond Issues	\$625	\$625	\$625	\$623	\$637	2036
Series 2011A [5]	Advance Refunding of Bond Issues	\$0	\$0	\$0	\$0	\$446	2021
Series 2011A	Student Center HVAC & Renovations	\$0	\$0	\$0	\$0	\$7,945	2021
<b>Educational &amp; General</b>							
Series 1998I	Voice, Video, Data	\$235	\$120	\$0	\$0	\$0	2008
Series 2000B	Higher Ed Capital Bond Fund	\$2,030	\$1,928	\$1,822	\$1,710	\$1,594	2021
Series 2001A	Dormitory Safety	\$619	\$551	\$482	\$413	\$344	2016
Series 2001E	Sustainability Center/Equip.	\$795	\$405	\$0	\$0	\$0	2008
Series 2002A	Higher Ed Capital Bond Fund	\$1,796	\$1,739	\$1,680	\$1,618	\$1,553	2023
Series 2002J [4]	Bradley Center/Havemeyer House	\$19,495	\$19,495	\$18,850	\$18,185	\$15,905	2032
Series 2003A	Equipment Leasing Fund	\$244	\$167	\$85	\$0	\$0	2010
Series 2004E [4]	Loop Road/Parking Garage	\$3,105	\$3,105	\$3,105	\$3,105	\$3,053	2024
Series 2006D [4]	Sustainability Center Completion	\$37,940	\$37,940	\$37,940	\$36,970	\$35,965	2032
Series 2006I [4]	Advance Refunding of Bond Issues	\$25,869	\$25,869	\$25,869	\$25,795	\$25,692	2036
Series 2011A [5]	Advance Refunding of Bond Issues	\$0	\$0	\$0	\$0	\$1,560	2021
		<u>\$254,909</u>	<u>\$251,600</u>	<u>\$246,959</u>	<u>\$240,311</u>	<u>\$240,891</u>	

[1] This information is not system-generated. Data is self-reported by unit.

[2] The College has pledged all revenues generated from the operation of the residential facilities, the student center building and from other legally available funds of the College under the aforementioned capital lease agreements.

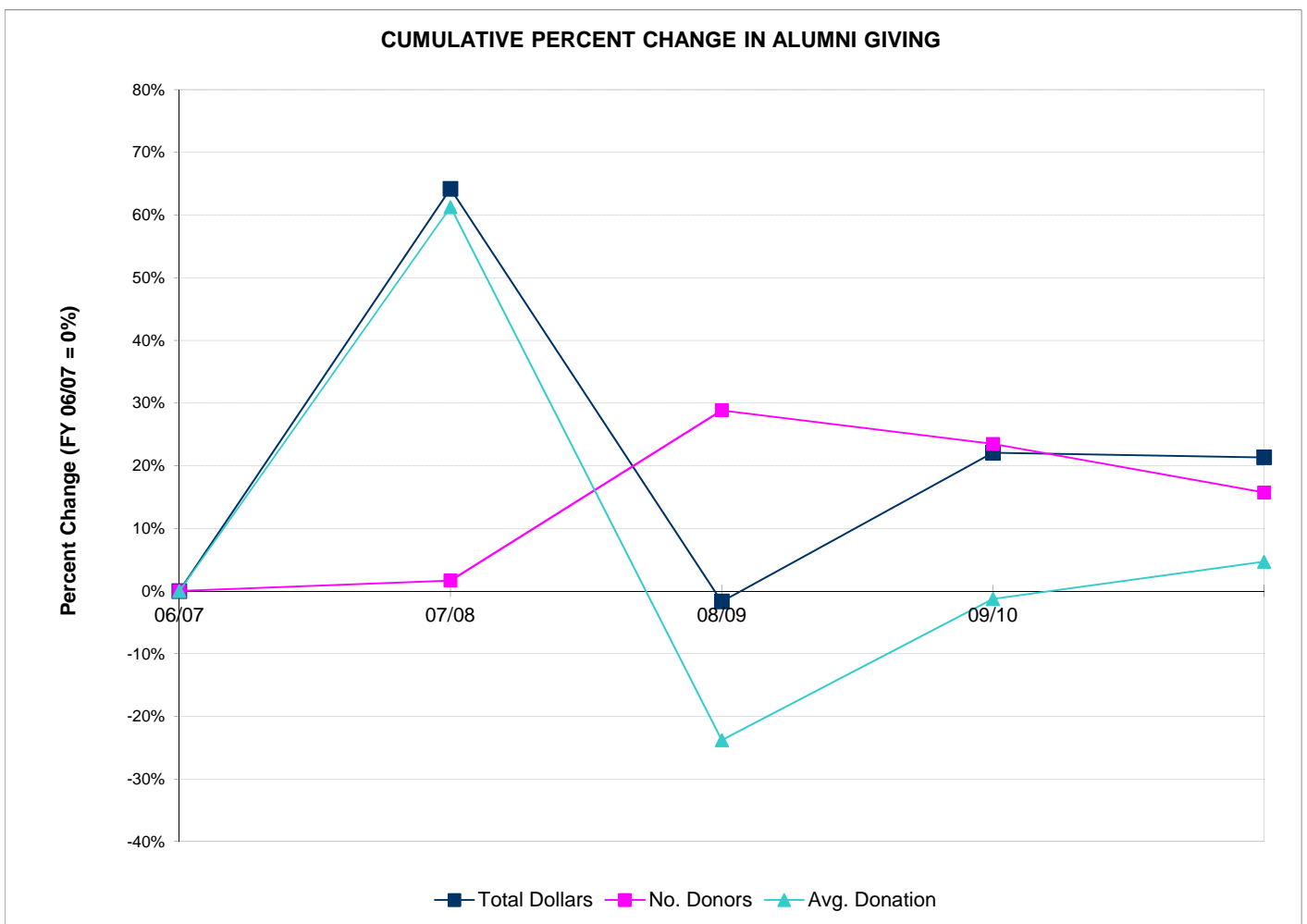
[3] Series 2003H partially replaced series 1999E through refinancing.

[4] Series 2006I partially replaced series 2001D, 2002H, 2002I, 2002J, 2004E, 2006D through refinancing.

[5] Series 2011A partially replaced series 1998G, 1998H, 2001D, 2002H, 2002I, and 2002J through refinancing.

**ALUMNI GIVING, FISCAL YEAR 2007 TO FISCAL YEAR 2011 <sup>[1]</sup>**

Giving	06/07	07/08	08/09	09/10	10/11	Percent Change	Percent Change
						06/07 to 10/11	09/10 to 10/11
Total Dollars	\$196,560	\$322,742	\$193,263	\$239,950	\$238,484	21.3%	-0.6%
Number of Donors	2,496	2,538	3,216	3,082	2,889	15.7%	-6.3%
Average Alumni Donation	\$78.85	\$127.16	\$60.09	\$77.86	\$82.55	4.7%	6.0%
Number of Alumni Solicited <sup>[3]</sup>	18,224	18,982	20,550	19,817	20,917	14.8%	5.6%
Phonathon New Donors <sup>[2]</sup>	135	31	26	43	88	-34.8%	104.7%



[1] This information is not system-generated. Data is self-reported by unit.

[2] Decrease in FY06-07 and FY07-08 due to strategic change in phonathon target a smaller group of non-donor alumni.

[3] The process of selecting Alumni to be solicited was revised by the Ass't. Director for Annual Giving in FY2010.

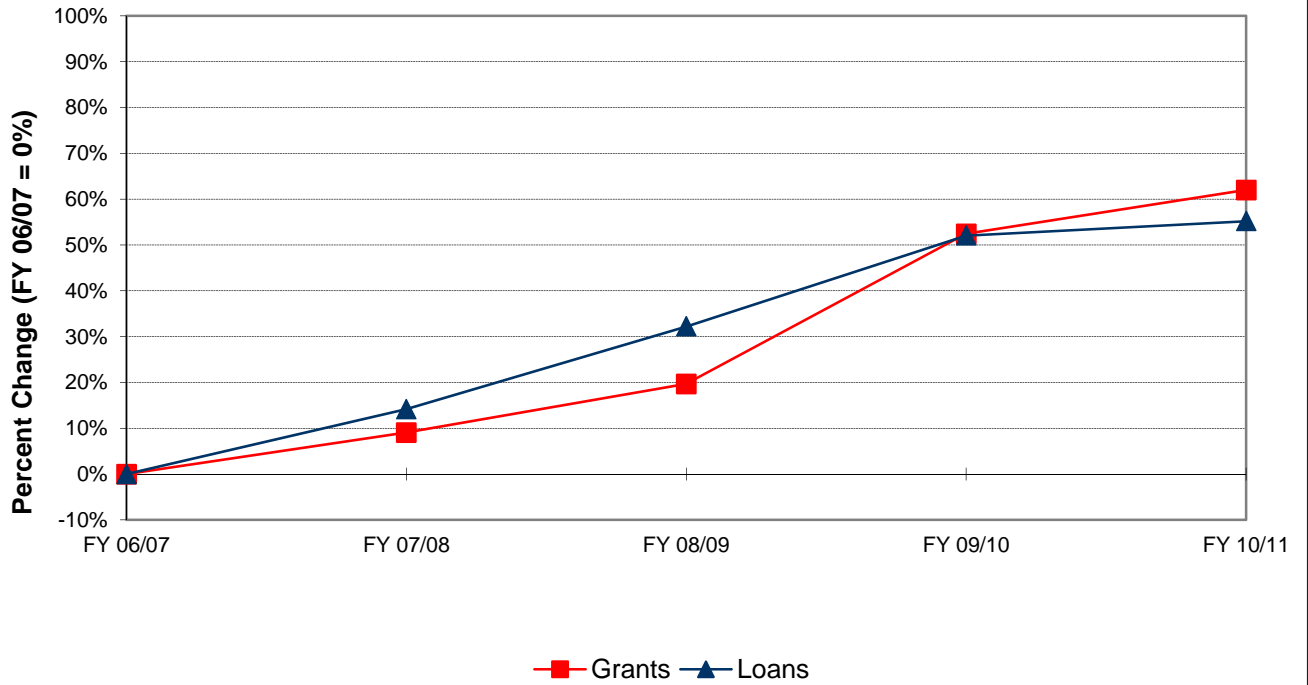
**STUDENT FINANCIAL AID, FY 2007 TO FY 2011 <sup>[1]</sup>**

<i>Financial Aid Dollars</i>	FY 06/07	FY 07/08	FY 08/09	FY 09/10	FY 10/11	Percent Change	Percent Change
	\$	\$	\$	\$	\$	06/07 to 10/11	09/10 to 10/11
Pell Grants	\$2,508,197	\$2,847,105	\$3,325,045	\$5,171,640	\$5,936,170	136.7%	14.8%
College Work Study	\$204,224	\$186,965	\$209,486	\$223,966	\$187,212	-8.3%	-16.4%
Perkins Loans	\$191,500	\$204,100	\$139,800	\$131,600	\$126,700	-33.8%	-3.7%
Stafford Loans (total)	\$11,910,750	\$13,768,187	\$17,125,718	\$22,853,291	\$23,778,269	99.6%	4.0%
Subsidized	\$7,212,263	\$8,709,543	\$9,501,421	\$10,555,837	\$11,269,838	56.3%	6.8%
Un-subsidized	\$4,698,487	\$5,058,644	\$7,624,297	\$12,297,454	\$12,508,431	166.2%	1.7%
SEOG	\$242,195	\$252,875	\$228,600	\$231,275	\$261,275	7.9%	13.0%
Parents Loans for Dependent Students	\$5,712,189	\$5,684,973	\$5,883,041	\$6,966,991	\$7,383,234	29.3%	6.0%
Ramapo College Grants (total)	\$5,230,342	\$5,662,055	\$5,978,243	\$6,721,518	\$7,465,985	42.7%	11.1%
EOF	\$418,533	\$407,106	\$416,408	\$728,467	\$1,073,558	156.5%	47.4%
Non-EOF	\$0	\$0	\$1,888	\$3,000	\$0	N/A	-100.0%
Institutional Grants	\$4,811,809	\$5,254,949	\$5,559,947	\$5,990,051	\$6,392,427	32.8%	6.7%
TAG	\$3,463,340	\$3,718,608	\$4,210,942	\$5,471,988	\$5,015,742	44.8%	-8.3%
Educational Opportunity Fund (EOF)	\$347,085	\$379,728	\$368,958	\$374,250	\$421,100	21.3%	12.5%
New Jersey Class Loans	\$4,220,429	\$5,868,664	\$6,615,847	\$5,862,975	\$5,034,636	19.3%	-14.1%
Private Loans	\$3,861,299	\$4,040,481	\$4,476,162	\$3,555,628	\$3,864,118	0.1%	8.7%
<b>Total:</b>	<b>\$37,891,550</b>	<b>\$42,613,741</b>	<b>\$48,561,842</b>	<b>\$57,565,122</b>	<b>\$59,474,441</b>	<b>57.0%</b>	<b>3.3%</b>

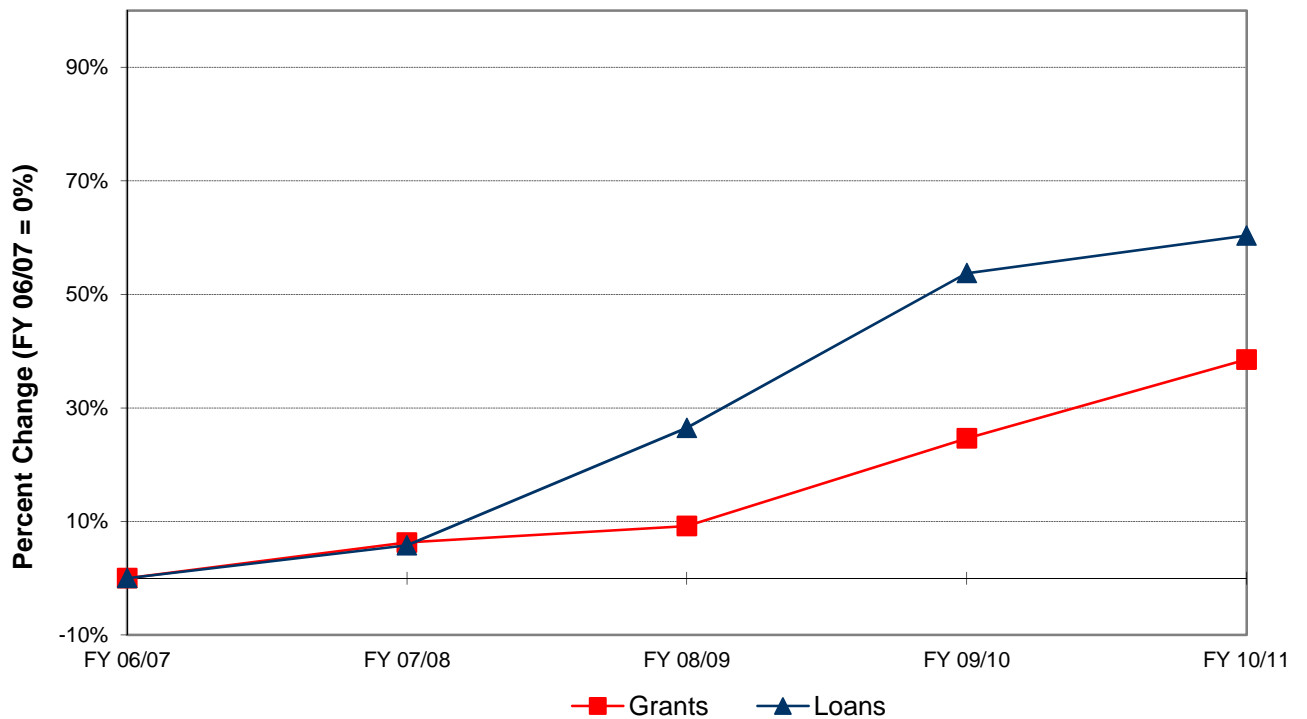
<i>Financial Aid Recipients</i>	FY 06/07	FY 07/08	FY 08/09	FY 09/10	FY 10/11	Percent Change	Percent Change
	#	#	#	#	#	06/07 to 10/11	09/10 to 10/11
Pell Grants	900	978	1,011	1,246	1,463	62.6%	17.4%
College Work Study	129	125	117	115	103	-20.2%	-10.4%
Perkins Loans	147	153	109	99	94	-36.1%	-5.1%
Stafford Loans (total)	3,210	3,356	4,253	5,560	5,863	82.6%	5.4%
Subsidized	1,972	2,098	2,278	2,462	2,637	33.7%	7.1%
Un-subsidized	1,238	1,258	1,975	3,098	3,226	160.6%	4.1%
SEOG	271	288	259	239	266	-1.8%	11.3%
Parents Loans for Dependent Students	523	516	537	630	669	27.9%	6.2%
Ramapo College Grants (total)	650	703	714	802	879	35.2%	9.6%
EOF	123	149	147	169	150	22.0%	-11.2%
Non-EOF	0	0	2	1	0	N.A.	-100.0%
Institutional Grants	527	554	565	632	729	38.3%	15.3%
TAG	822	851	915	1,053	1,091	32.7%	3.6%
Educational Opportunity Fund (EOF)	268	274	279	288	334	24.6%	16.0%
New Jersey Class Loans	358	468	496	455	403	12.6%	-11.4%
Private Loans	354	364	412	315	334	-5.6%	6.0%
<b>Total</b>	<b>7,632</b>	<b>8,076</b>	<b>9,102</b>	<b>10,802</b>	<b>11,499</b>	<b>50.7%</b>	<b>6.5%</b>

[1] This information is not system-generated. Data is self-reported by unit.

**CUMULATIVE PERCENT CHANGE IN FINANCIAL AID DOLLARS BY SOURCE**  
(excluding College Work Study)



**CUMULATIVE PCT. CHANGE IN NO. OF FINANCIAL AID RECIPIENTS BY SOURCE**  
(excluding College Work Study)





## CAMPUS SECURITY ANNUAL REPORT <sup>[1]</sup>

Reported Occurrences	2006	2007	2008	2009	2010	Percent Change 2006 to 2010	Percent Change 2009 to 2010
Criminal Homicide	0	0	0	0	0	N/A	N/A
<i>Sexual Offenses:</i>							
Forcible: Rape, Sodomy, Assault (with an object), Fondling	4 <sup>[2]</sup>	5	7	3	11	175.0%	266.7%
Non-Forcible: Incest, Statutory Rape	0	0	0	0	0	N/A	N/A
Robbery	0	0	0	0	0	N/A	N/A
Aggravated Assault	0	0	1	0	0	N/A	N/A
Burglary	19	11	8	16	3	-84.2%	-81.3%
Motor Vehicle Theft	5 <sup>[3]</sup>	2	2	3	3	-40.0%	0.0%
Arson	1	8 <sup>[4]</sup>	2	3	0	-100.0%	-100.0%
Hate Crimes	0	0	0	0	0	N/A	N/A
<b>Arrests:</b>							
Weapon Law Violation	1	0	1	0	0	-100.0%	N/A
Drug Abuse Violation	10	8	22	11	32	220.0%	190.9%
Liquor Law Violation	0	0	3	7	12	N/A	71.4%

[1] This information is not system-generated. Data is self-reported by unit. Crime statistics reported using FBI definitions. Figures are the most current available in the Campus Crime Statistics website publication.

[2] In most incidents, the victim was acquainted with the perpetrator.

[3] All 5 motor vehicle thefts involved golfcarts that were recovered.

[4] The increased reporting of arsons in 2007 is due to a requirement by the NJ State Fire Marshal's Office to report all incidents involving the burning of paper and posters on bulletin boards and doors causing minimal to no damage. In the past such incidents were classified by the Mahwah Police Departments as Criminal Damage under the NJ State Criminal Code.

**STUDENT PARTICIPATION IN STUDY ABROAD PROGRAMS, AY 06-07 TO AY 10-11 <sup>[1]</sup>**

2-6 Week <sup>[2]</sup> programs	AY 06-07 <sup>[6]</sup>		AY 07-08		AY 08-09		AY 09-10		AY 10-11		Percent Change 06/07 to 10/11	Percent Change 09/10 to 10/11
	Participants		Participants		Participants		Participants		Participants			
	No.	Pct.	No.	Pct.	No.	Pct.	No.	Pct.	No.	Pct.		
Africa	0	0%	0	0%	0	0%	0	0%	8	9%	N/A	N/A
Asia	1	3.6%	7	11.1%	0	0%	7	10.8%	13	14.0%	1200.0%	85.7%
Australia	0	0%	0	0%	0	0%	0	0%	4	4%	N/A	N/A
Europe <sup>[4]</sup>	9	32.1%	29	46.0%	19	50.0%	20	30.8%	37	39.8%	311.1%	85.0%
So. America <sup>[3]</sup>	6	21.4%	15	23.8%	15	39.5%	20	30.8%	24	25.8%	300.0%	20.0%
Other <sup>[5]</sup>	12	42.9%	2	3.2%	4	10.5%	4	6.2%	7	7.5%	-41.7%	75.0%
American West	0	0.0%	10	15.87%	0	0.0%	14	21.54%	0	0%	N/A	-100.0%
<b>Total:</b>	<b>28</b>	<b>100.0%</b>	<b>63</b>	<b>100.0%</b>	<b>38</b>	<b>100.0%</b>	<b>65</b>	<b>100.0%</b>	<b>93</b>	<b>100.0%</b>	<b>232.1%</b>	<b>43.1%</b>

[1] This data is not system-generated; it is self-reported by the unit. Numbers include Ramapo (& non-Ramapo) students enrolled in at least one course involving a study-abroad destination.

[2] Most short programs (during spring break or summer) are 2-6 weeks. A few programs are other durations.

[3] The Costa Rica programs (Intensa Spanish Language, and Eco-Systems) were previously sponsored by Ramapo. As of AY06-07, programs in Costa Rica are sponsored by the NJ State Consortium for International Students (NJSCIS).

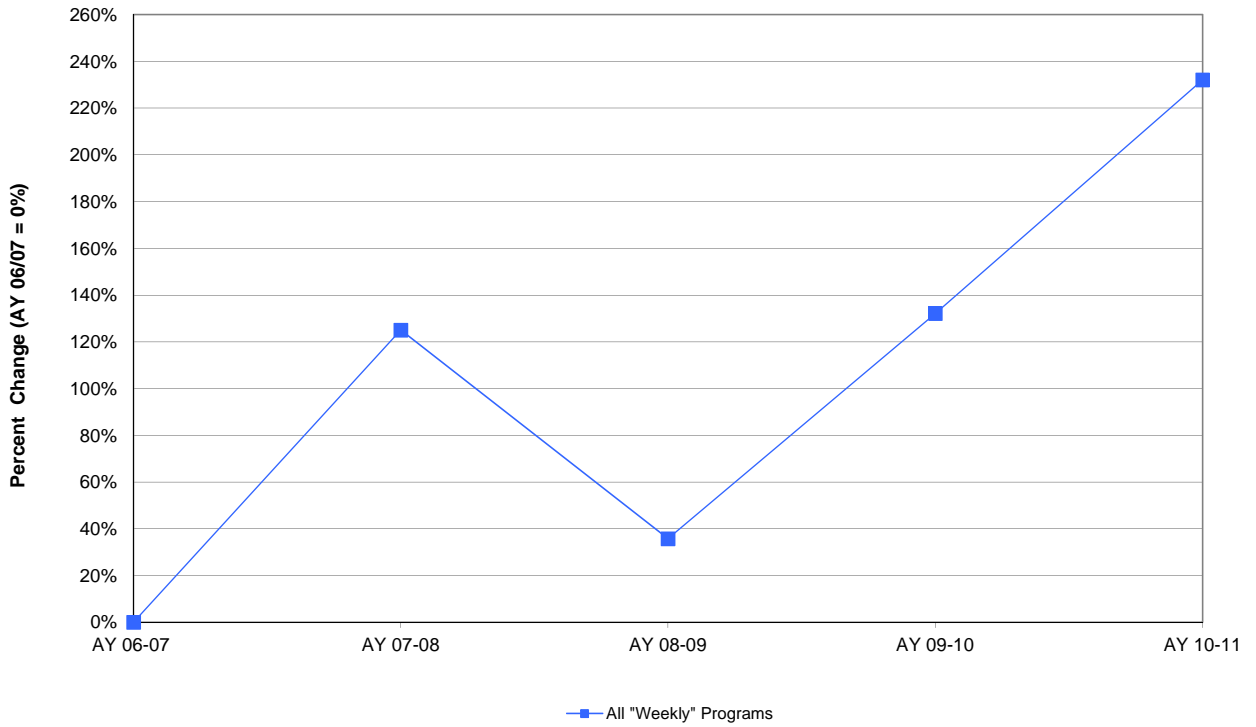
[4] The England Regents program ended in AY05-06. Programs in England are now sponsored by the NJSCIS.

[5] Data represents "worldwide" destinations with fewer than 3 students participating in any of the short-periods.

[6] After Winter 2006, only one program (the India Semester) was offered entirely through Ramapo. Beginning in Spring 2006, Ramapo students participated in programs sponsored by the NJSCIS, and continue to do so.

Full Semester Programs	F 06 – Spr 07		F 07 – Spr 08		F 08 – Spr 09		F 09 – Spr 10		F 10 – Spr 11		Percent Change 06/07 to 10/11	Percent Change 09/10 to 10/11
	Participants		Participants		Participants		Participants		Participants			
	No.	Pct.	No.	Pct.	No.	Pct.	No.	Pct.	No.	Pct.		
Africa	1	2.3%	0	0%	0	0%	0	0%	0	0%	-100.0%	N/A
Asia	12	27.9%	11	23.9%	16	29.6%	13	27.1%	3	7.5%	-75.0%	-76.9%
Australia	12	27.9%	13	28.3%	9	16.7%	3	6.3%	5	12.5%	-58.3%	66.7%
Europe	13	30.2%	15	32.6%	22	40.7%	21	43.8%	25	62.5%	92.3%	19.0%
So. America	4	9.3%	6	13.0%	6	11.1%	11	22.9%	7	17.5%	75.0%	-36.4%
Semester at Sea	1	2.3%	1	2.2%	1	1.9%	0	0%	0	0%	-100.0%	N/A
	<b>43</b>	<b>100.0%</b>	<b>46</b>	<b>100.0%</b>	<b>54</b>	<b>100.0%</b>	<b>48</b>	<b>100.0%</b>	<b>40</b>	<b>100.0%</b>	<b>-7.0%</b>	<b>-16.7%</b>

**CUMULATIVE PERCENT CHANGE IN 2- 6 WEEK STUDY ABROAD PROGRAM PARTICIPATION**



**CUMULATIVE PERCENT CHANGE IN FULL SEMESTER STUDY ABROAD PROGRAM PARTICIPATION**

