

**SECTION VI:**

**STUDENT SERVICES**

2010 INSTITUTIONAL PROFILE

# CAHILL CENTER<sup>[1]</sup>

## COOPERATIVE EDUCATION

	05/06	06/07	07/08	08/09	09/10	Percent Change 05/06 to 09/10	Percent Change 08/09 to 09/10
Number of Employers	277	256	268	202	185	-33.2%	-8.4%
Number of Students:							
Female	216	157	167	135	127	-41.2%	-5.9%
Male	<u>132</u>	<u>148</u>	<u>124</u>	<u>95</u>	<u>85</u>	<u>-35.6%</u>	<u>-10.5%</u>
Total Students	348	305	291	230	212	-39.1%	-7.8%
Dollars Earned	\$1,051,361	\$806,095	\$783,711	\$413,534	\$339,814	-67.7%	-17.8%
Credits Earned	1,413	1,250	1,164	920	848	-40.0%	-7.8%

## CAREER SERVICES

	05/06	06/07	07/08	08/09	09/10	Percent Change 05/06 to 09/10	Percent Change 08/09 to 09/10
Course Participants	143	160	172	219	140	-2.1%	-36.1%
Job Fair Participants	600	600	550	700	475	-20.8%	-32.1%

## STUDENT ASSISTANT PROGRAM

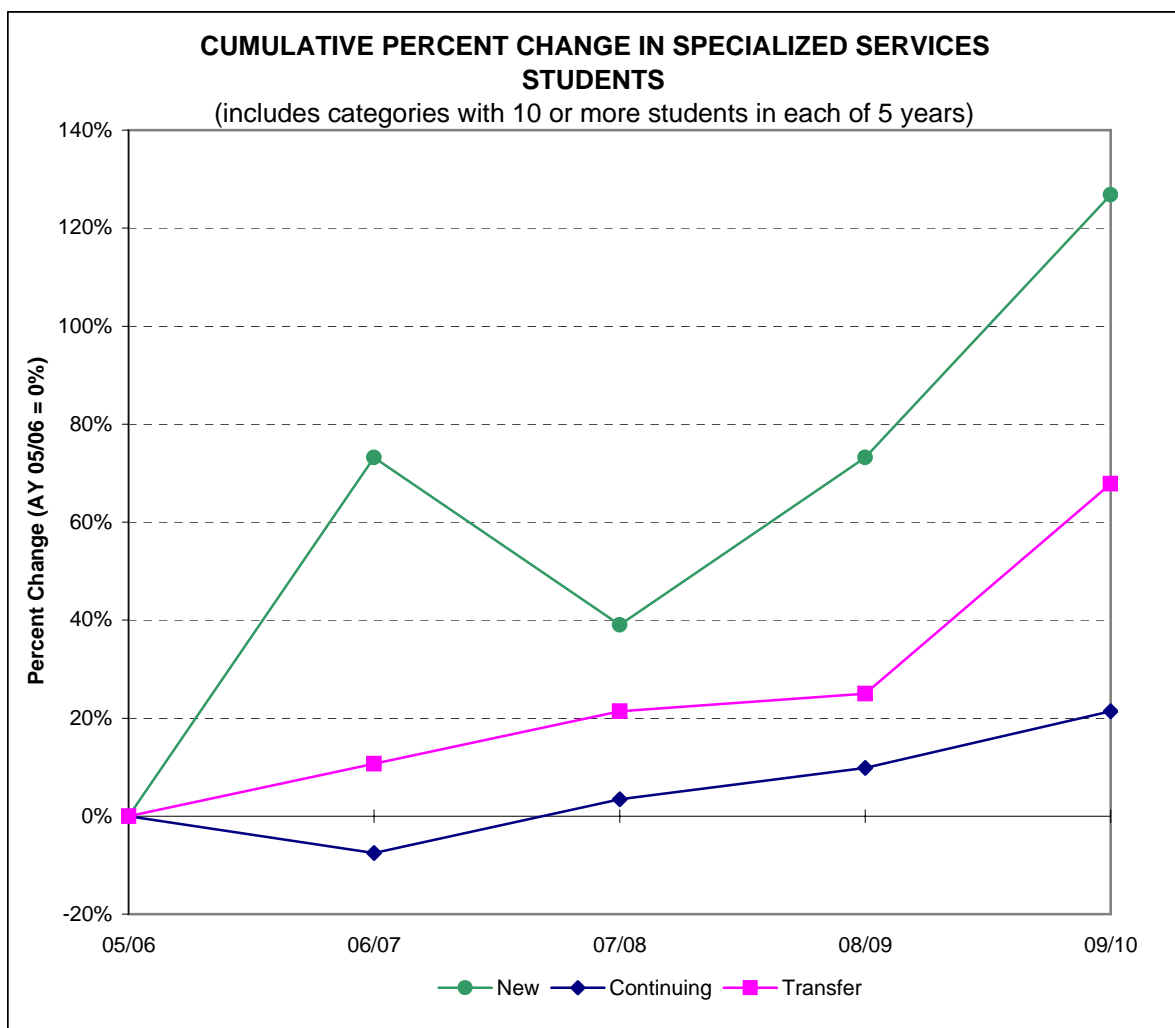
	05/06	06/07	07/08	08/09	09/10	Percent Change 05/06 to 09/10	Percent Change 08/09 to 09/10
Student Workers [2]	739	782	802	824	846	14.5%	2.7%

[1] This information is not system generated. Data is self-reported by unit.

[2] The Cahill Center acquired responsibility in 2002 for managing students assigned to perform special projects for faculty.

## SPECIALIZED SERVICES<sup>[1]</sup>

Students	05/06	06/07	07/08	08/09	09/10	Percent Change	Percent Change
						05/06 to 09/10	08/09 to 09/10
New [2]	41	71	57	71	93	126.8%	31.0%
Continuing	173	160	179	190	210	21.4%	10.5%
Transfer	28	31	34	35	47	67.9%	34.3%
Re-Admits [3]	1	2	1	0	3	200.0%	N/A
<b>Total</b>	<b>243</b>	<b>264</b>	<b>271</b>	<b>296</b>	<b>353</b>	<b>45.3%</b>	<b>19.3%</b>



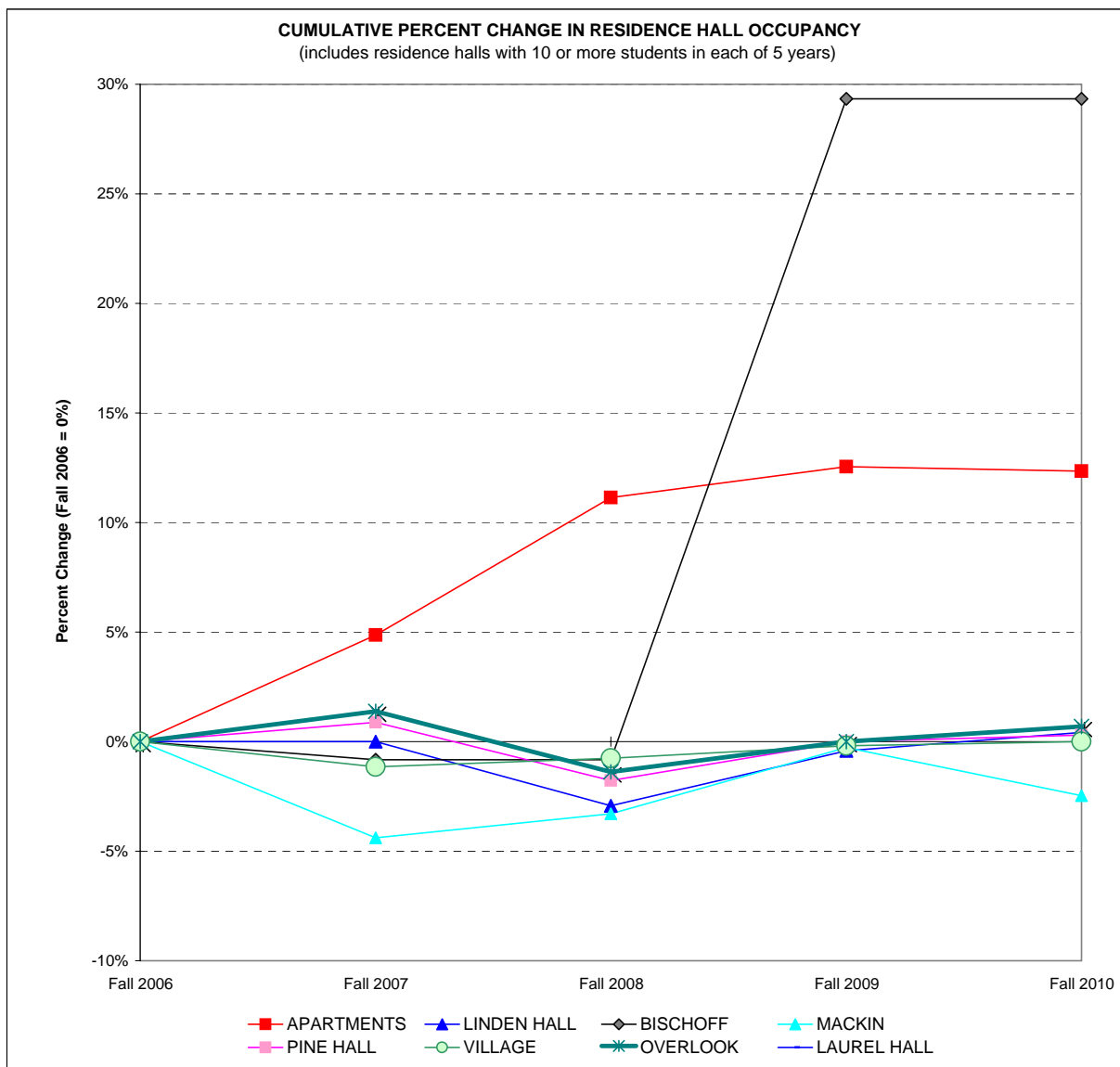
[1] This information is not system-generated. Data is self-reported by unit.

[2] Includes students already enrolled at Ramapo College for one or more semesters, but new to the Office of Specialized Services, and new first-time freshmen.

[3] The 09/10 readmit count includes 2 students who came back after graduation as post-graduate students and 1 returning undergrad.

FALL SEMESTER RESIDENCE HALL OCCUPANCY, 2006 TO 2010<sup>[1]</sup>

	Fall 2006		Fall 2007		Fall 2008		Fall 2009		Fall 2010		Percent Change 06 to 10	Percent Change 09 to 10
	Number	Percent	Number	Percent	Number	Percent	Number	Percent	Number	Percent		
APARTMENTS	494	17.9%	518	17.7%	549	18.3%	556	18.2%	555	18.2%	12.3%	-0.2%
LINDEN HALL	239	8.7%	239	8.2%	232	7.7%	238	7.8%	240	7.9%	0.4%	0.8%
BISCHOFF <sup>[2]</sup>	242	8.8%	240	8.2%	240	8.0%	313 <sup>[2]</sup>	10.3%	313	10.3%	29.3%	0.0%
MACKIN <sup>[2]</sup>	365	13.3%	349	11.9%	353	11.8%	364	11.9%	356	11.7%	-2.5%	-2.2%
PINE HALL	339	12.3%	342	11.7%	333	11.1%	339	11.1%	340	11.2%	0.3%	0.3%
OVERFLOW/HOTEL	-	-	-	-	59	2.0%	-	-	-	-	N/A	N/A
VILLAGE	523	19.0%	517	17.7%	519	17.3%	522	17.1%	523	17.2%	0.0%	0.2%
THE OVERLOOK	290	10.5%	294	10.0%	286	9.5%	290	9.5%	292	9.6%	0.7%	0.7%
LAUREL HALL	262	9.5%	430	14.7%	432	14.4%	430	14.1%	430	14.1%	64.1%	0.0%
<b>TOTAL</b>	<b>2,754</b>		<b>2,929</b>		<b>3,003</b>		<b>3,052</b>		<b>3,049</b>		<b>10.7%</b>	<b>-0.1%</b>



[1] Occupancy as of the 10th day of the semester as reported in the Registrar's official file.

[2] Late 2008, Oak Hall was renamed Bischoff Hall and Maple Hall was renamed Mackin Hall.

[3] For fall 2009, Bischoff Hall suites were reconfigured to house TRIPLES on floors 3-5 and DBLS on floors 1 & 2.

**FINANCING FOR RESIDENCE LIFE, STUDENT CENTER, AND EDUCATIONAL PROJECTS <sup>[1] [2]</sup>**

<u>Facilities Bond</u>	<u>Name</u>	Outstanding	Outstanding	Outstanding	Outstanding	Outstanding	Outstanding	<u>Year Paid in Full</u>
		Principal Payments Jun-05 (000)	Principal Payments Jun-06 (000)	Principal Payments Jun-07 (000)	Principal Payments Jun-08 (000)	Principal Payments Jun-09 (000)	Principal Payments Jun-10 (000)	
<u>Residence Life</u>								
Series 1973A	Phase I	\$0	\$0	\$0	\$0	\$0	\$0	2003
Series 1998G	Oak Hall/Pavilion	\$15,155	\$14,790	\$14,420	\$14,035	\$13,635	\$13,220	2028
Series 1999E [3]	Maple Hall/Pavilion Expansion	\$2,065	\$1,690	\$1,300	\$890	\$455	\$0	2009
Series 2001D [4]	The Village/Apt. Wiring	\$39,735	\$38,965	\$6,040	\$6,040	\$6,040	\$5,135	2014
Series 2002H [4]	Village Completion/Overlook	\$28,580	\$28,000	\$18,610	\$18,610	\$18,230	\$17,585	2032
Series 2003G [3]	Pine & Linden	\$9,300	\$9,185	\$7,875	\$6,540	\$5,175	\$3,775	2013
Series 2003H [3]	Oak Hall/Pavilion/Phase I Renov.	\$18,930	\$18,930	\$18,930	\$18,915	\$18,775	\$18,635	2029
Series 2004E [4]	Laurel Hall	\$44,350	\$44,350	\$10,575	\$10,575	\$10,575	\$10,575	2024
Series 2006I [4]	Advance Refunding of Bond Issues	\$0	\$0	\$80,326	\$80,326	\$80,296	\$80,067	2036
<u>Student Center</u>								
Series 1998H	Student Center Renovations	\$1,385	\$1,255	\$1,120	\$980	\$835	\$685	2013
Series 2002I [4]	Student Center Renovations	\$2,045	\$2,005	\$1,345	\$1,345	\$1,300	\$1,255	2032
Series 2003F	Student Center Annex	\$1,820	\$1,810	\$1,615	\$1,400	\$1,185	\$960	2013
Series 2006I [4]	Advance Refunding of Bond Issues	\$0	\$0	\$625	\$625	\$625	\$623	2036
<u>Educational &amp; General</u>								
Series 1998I	Voice, Video, Data	\$450	\$345	\$235	\$120	\$0	\$0	2008
Series 2000B	Higher Ed Capital Bond Fund	\$2,218	\$2,126	\$2,030	\$1,928	\$1,822	\$1,710	2021
Series 2001A	Dormitory Safety	\$757	\$688	\$619	\$551	\$482	\$413	2016
Series 2001E	Sustainability Center/Equip.	\$1,535	\$1,170	\$795	\$405	\$0	\$0	2008
Series 2002A	Higher Ed Capital Bond Fund	\$1,850	\$1,850	\$1,796	\$1,739	\$1,680	\$1,618	2023
Series 2002J [4]	Bradley Center/Havemeyer House	\$29,550	\$28,945	\$19,495	\$19,495	\$18,850	\$18,185	2032
Series 2003A	Equipment Leasing Fund	\$394	\$320	\$244	\$167	\$85	\$0	2010
Series 2004E [4]	Loop Road/Parking Garage	\$9,630	\$9,630	\$3,105	\$3,105	\$3,105	\$3,105	2024
Series 2006D [4]	Sustainability Center Completion	\$0	\$49,085	\$37,940	\$37,940	\$37,940	\$36,970	2032
Series 2006I [4]	Advance Refunding of Bond Issues	\$0	\$0	\$25,869	\$25,869	\$25,869	\$25,795	2036
		<u>\$209,749</u>	<u>\$255,139</u>	<u>\$254,909</u>	<u>\$251,600</u>	<u>\$246,959</u>	<u>\$240,311</u>	

[1] This information is not system-generated. Data is self-reported by unit.

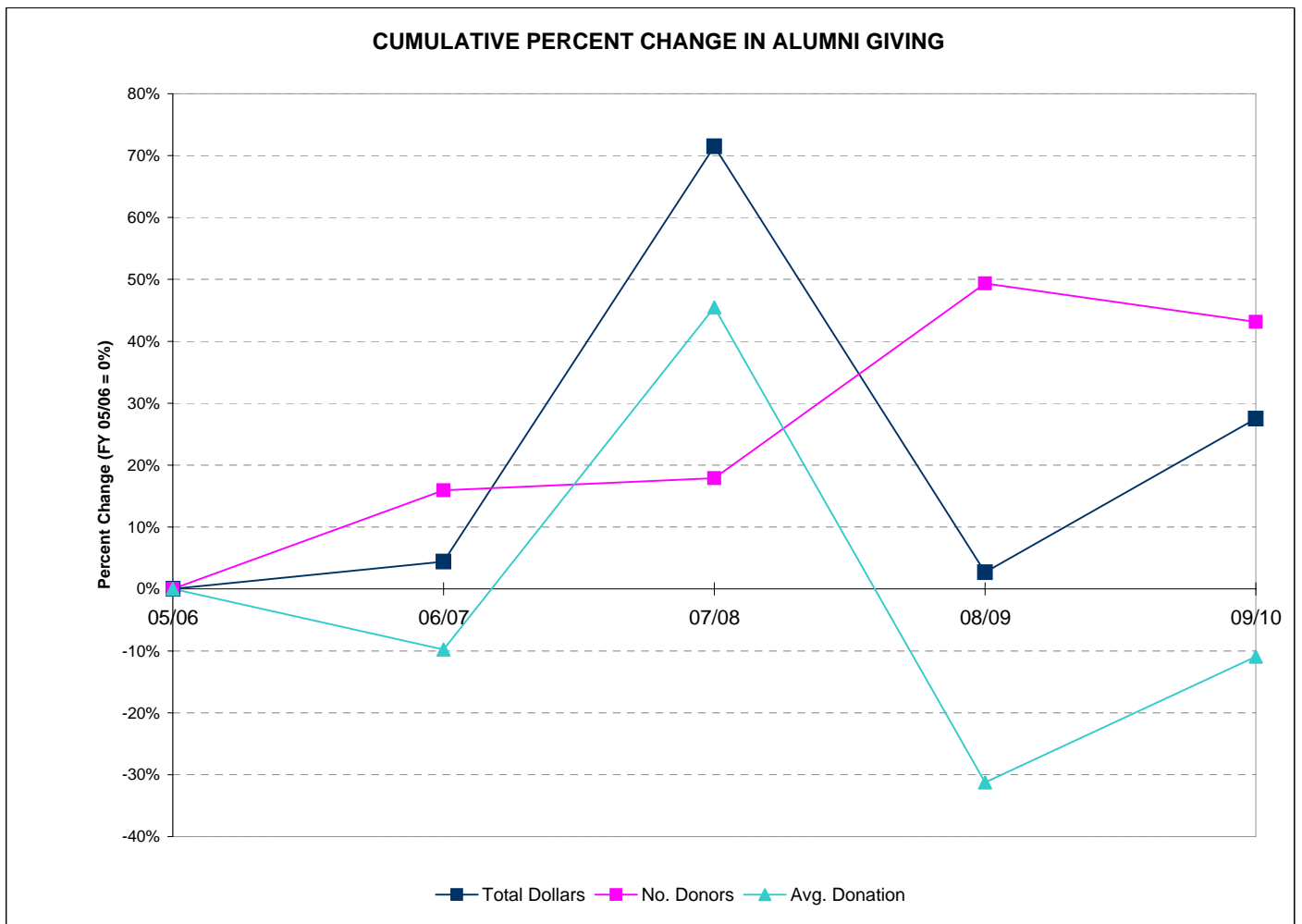
[2] The College has pledged all revenues generated from the operation of the residential facilities, the student center building and from other legally available funds of the College under the aforementioned capital lease agreements.

[3] Series 2003H partially replaced series 1999E through refinancing.

[4] Series 2006I partially replaced series 2001D, 2002H, 2002I, 2002J, 2004E, 2006D through refinancing.

**ALUMNI GIVING, FISCAL YEAR 2006 TO FISCAL YEAR 2010<sup>[1]</sup>**

Giving	05/06	06/07	07/08	08/09	09/10	Percent Change	Percent Change
						05/06 to 09/10	08/09 to 09/10
Total Dollars	\$188,211	\$196,560	\$322,742	\$193,263	\$239,950	27.5%	24.2%
Number of Donors	2,153	2,496	2,538	3,216	3,082	43.1%	-4.2%
Average Alumni Donation	\$87.42	\$78.85	\$127.16	\$60.09	\$77.86	-10.9%	29.6%
Number of Alumni Solicited <sup>[3]</sup>	17,886	18,224	18,982	20,550	19,817	10.8%	-3.6%
Phonathon New Donors <sup>[2]</sup>	104	135	31	26	43	-58.7%	65.4%



[1] This information is not system-generated. Data is self-reported by unit.

[2] Decrease in FY06-07 and FY07-08 due to strategic change in phonathon target a smaller group of non-donor alumni.

[3] The process of selecting Alumni to be solicited was revised by the Ass't. Director for Annual Giving in FY2010.

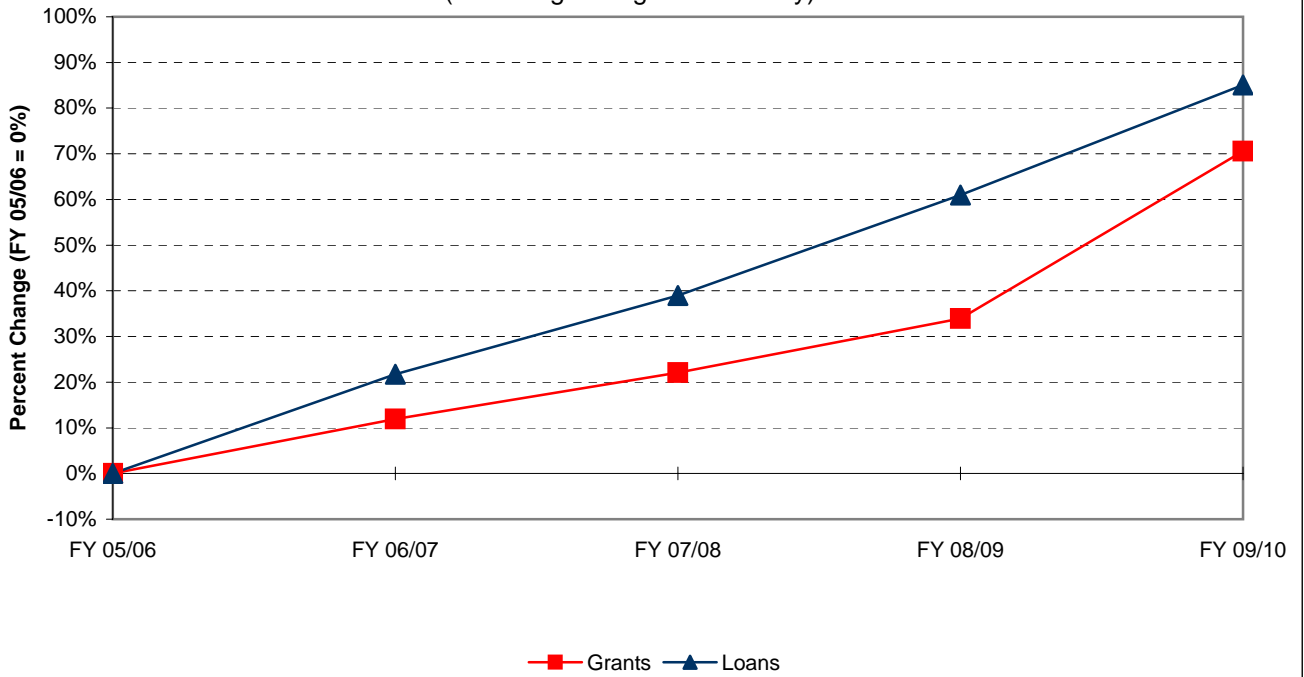
**STUDENT FINANCIAL AID, FY 2006 TO FY 2010<sup>[1]</sup>**

<i>Financial Aid Dollars</i>	FY 05/06	FY 06/07	FY 07/08	FY 08/09	FY 09/10	Percent Change	Percent Change
	\$	\$	\$	\$	\$	05/06 to 09/10	08/09 to 09/10
Pell Grants	\$2,387,812	\$2,508,197	\$2,847,105	\$3,325,045	\$5,171,640	116.6%	55.5%
College Work Study	\$192,715	\$204,224	\$186,965	\$209,486	\$223,966	16.2%	6.9%
Perkins Loans	\$124,272	\$191,500	\$204,100	\$139,800	\$131,600	5.9%	-5.9%
Stafford Loans (total)	\$10,695,474	\$11,910,750	\$13,768,187	\$17,125,718	\$22,853,291	113.7%	33.4%
Subsidized	\$6,712,707	\$7,212,263	\$8,709,543	\$9,501,421	\$10,555,837	57.3%	11.1%
Un-subsidized	\$3,982,767	\$4,698,487	\$5,058,644	\$7,624,297	\$12,297,454	208.8%	61.3%
SEOG	\$226,202	\$242,195	\$252,875	\$228,600	\$231,275	2.2%	1.2%
Parents Loans for Dependent Students	\$4,252,088	\$5,712,189	\$5,684,973	\$5,883,041	\$6,966,991	63.8%	18.4%
Ramapo College Grants (total)	\$4,439,901	\$5,230,342	\$5,662,055	\$5,978,243	\$6,721,518	51.4%	12.4%
EOF	\$374,863	\$418,533	\$407,106	\$416,408	\$728,467	94.3%	74.9%
Non-EOF	\$9,703	\$0	\$0	\$1,888	\$3,000	-69.1%	58.9%
Institutional Grants	\$4,055,335	\$4,811,809	\$5,254,949	\$5,559,947	\$5,990,051	47.7%	7.7%
TAG	\$3,098,991	\$3,463,340	\$3,718,608	\$4,210,942	\$5,471,988	76.6%	29.9%
Educational Opportunity Fund (EOF)	\$381,067	\$347,085	\$379,728	\$368,958	\$374,250	-1.8%	1.4%
New Jersey Class Loans	\$3,034,650	\$4,220,429	\$5,868,664	\$6,615,847	\$5,862,975	93.2%	-11.4%
Private Loans	\$3,163,450	\$3,861,299	\$4,040,481	\$4,476,162	\$3,555,628	12.4%	-20.6%
<b>Total</b>	<b>\$31,996,622</b>	<b>\$37,891,550</b>	<b>\$42,613,741</b>	<b>\$48,561,842</b>	<b>\$57,565,122</b>	<b>79.9%</b>	<b>18.5%</b>

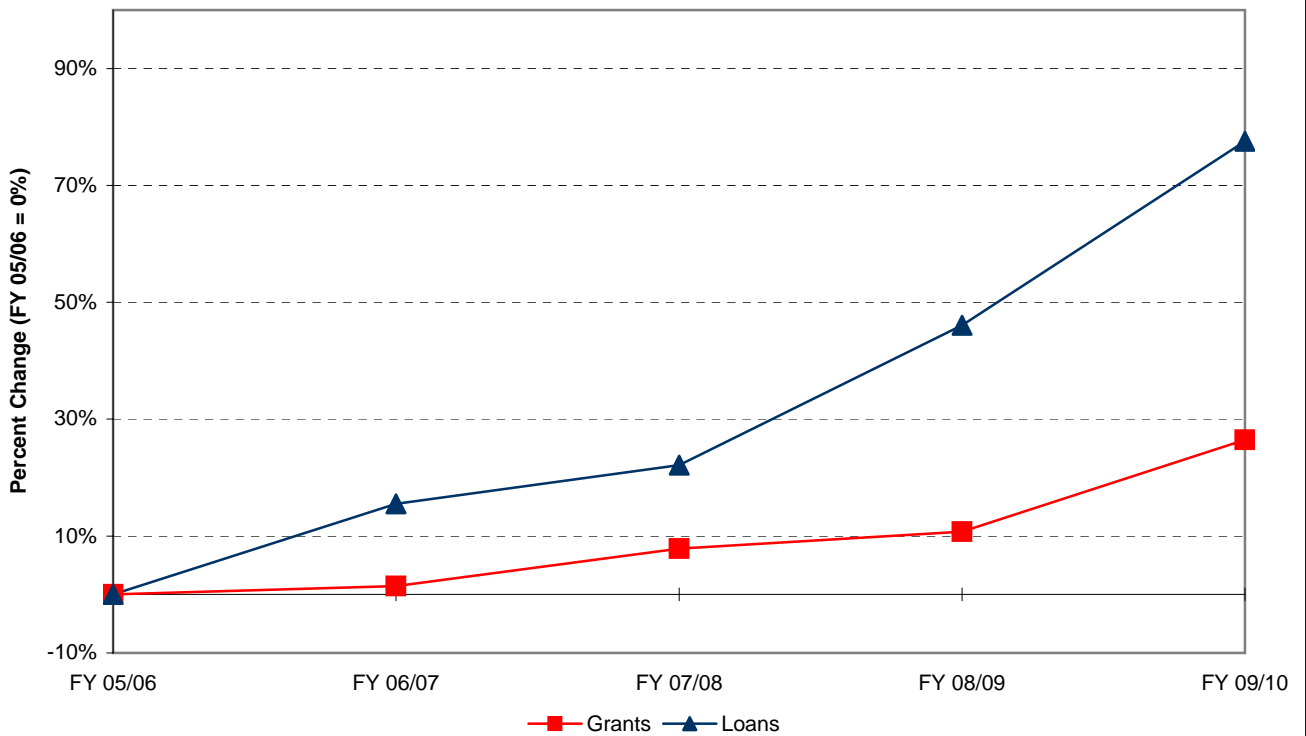
<i>Financial Aid Recipients</i>	FY 05/06	FY 06/07	FY 07/08	FY 08/09	FY 09/10	Percent Change	Percent Change
	#	#	#	#	#	05/06 to 09/10	08/09 to 09/10
Pell Grants	907	900	978	1,011	1,246	37.4%	23.2%
College Work Study	149	129	125	117	115	-22.8%	-1.7%
Perkins Loans	103	147	153	109	99	-3.9%	-9.2%
Stafford Loans (total)	2,783	3,210	3,356	4,253	5,560	99.8%	30.7%
Subsidized	1,762	1,972	2,098	2,278	2,462	39.7%	8.1%
Un-subsidized	1,021	1,238	1,258	1,975	3,098	203.4%	56.9%
SEOG	238	271	288	259	239	0.4%	-7.7%
Parents Loans for Dependent Students	462	523	516	537	630	36.4%	17.3%
Ramapo College Grants (total)	643	650	703	714	802	24.7%	12.3%
EOF	115	123	149	147	169	47.0%	15.0%
Non-EOF	4	0	0	2	1	-75.0%	-50.0%
Institutional Grants	524	527	554	565	632	20.6%	11.9%
TAG	811	822	851	915	1,053	29.8%	15.1%
Educational Opportunity Fund (EOF)	270	268	274	279	288	6.7%	3.2%
New Jersey Class Loans	310	358	468	496	455	46.8%	-8.3%
Private Loans	318	354	364	412	315	-0.9%	-23.5%
<b>Total</b>	<b>6,994</b>	<b>7,632</b>	<b>8,076</b>	<b>9,102</b>	<b>10,802</b>	<b>54.4%</b>	<b>18.7%</b>

[1] This information is not system-generated. Data is self-reported by unit.

**CUMULATIVE PERCENT CHANGE IN FINANCIAL AID DOLLARS BY SOURCE**  
(excluding College Work Study)



**CUMULATIVE PCT. CHANGE IN NO. OF FINANCIAL AID RECIPIENTS BY SOURCE**  
(excluding College Work Study)





## CAMPUS SECURITY ANNUAL REPORT <sup>[1]</sup>

Reported Occurrences	2005	2006	2007	2008	2009	Percent Change	Percent Change
						2005 to 2009	2008 to 2009
Criminal Homicide	0	0	0	0	0	N/A	N/A
<i>Sexual Offenses:</i>							
Forcible: Rape, Sodomy, Assault (with an object), Fondling	13 <sup>[4]</sup>	4 <sup>[2]</sup>	5	7	3	-76.9%	-57.1%
Non-Forcible: Incest, Statutory Rape	0	0	0	0	0	N/A	N/A
Robbery	1	0	0	0	0	-100.0%	N/A
Aggravated Assault	2	0	0	1	0	-100.0%	-100.0%
Burglary	19	19	11	8	16	-15.8%	100.0%
Motor Vehicle Theft	0	5 <sup>[3]</sup>	2	2	3	N/A	50.0%
Arson	0	1	8 <sup>[5]</sup>	2	3	N/A	50.0%
Hate Crimes	0	0	0	0	0	N/A	N/A
<b>Arrests:</b>							
Weapon Law Violation	1	1	0	1	0	-100.0%	-100.0%
Drug Abuse Violation	4	10	8	22	11	175.0%	-50.0%
Liquor Law Violation	0	0	0	3	7	N/A	133.3%

[1] This information is not system-generated. Data is self-reported by unit. Crime statistics reported using FBI definitions. Figures are the most current available in the Campus Crime Statistics publication of 8/09.

[2] In most incidents, the victim was acquainted with the perpetrator.

[3] All 5 motor vehicle thefts involved golfcarts that were recovered.

[4] Revised count in the Campus Crime Statistics publication of 8/08.

[5] The increased reporting of arsons in this year is due to a requirement by the NJ State Fire Marshal's Office to report all incidents involving the burning of paper and posters on bulletin boards and doors causing minimal to no damage. In the past such incidents were classified by the Mahwah Police Departments as Criminal Damage under the NJ State Crimmminal Code.

**STUDENT PARTICIPATION IN STUDY ABROAD PROGRAMS, AY 05-06 TO AY 09-10<sup>[1]</sup>**

2-6 Week Programs	AY 05-06 <sup>[6]</sup>		AY 06-07 <sup>[7]</sup>		AY 07-08		AY 08-09		AY 09-10		Percent Change 05/06 to 09/10	Percent Change 08/09 to 09/10
	Participants		Participants		Participants		Participants		Participants			
	No.	Pct.	No.	Pct.	No.	Pct.	No.	Pct.	No.	Pct.		
American Southwest	24	22.6%	-	-	-	-	-	-	0	-	-100.0%	N/A
American West	-	-	-	-	10	15.4%	-	-	14	21.5%	N/A	N/A
Austria	-	-	-	-	1	1.5%	-	-	-	-	N/A	N/A
China	-	-	1	3.4%	7	10.8%	-	-	7	10.8%	N/A	N/A
Costa Rica [2]	-	-	2	6.9%	2	3.1%	-	-	9	13.8%	N/A	N/A
Denmark	-	-	-	-	-	-	1	2.5%	0	-	N/A	-100.0%
England [3]	65	61.3%	1	3.4%	5	7.7%	4	10.0%	3	4.6%	-95.4%	-25.0%
France	-	-	-	-	-	-	1	2.5%	2	3.1%	N/A	100.0%
Ireland	1	0.9%	2	6.9%	8	12.3%	1	2.5%	3	4.6%	N/A	200.0%
Italy	1	0.9%	6	20.7%	16	24.6%	13	32.5%	12	18.5%	1100.0%	-7.7%
Jamaica	11	10.4%	-	-	-	-	-	-	0	-	-100.0%	N/A
Peru	-	-	-	-	-	-	1	2.5%	0	-	N/A	-100.0%
Prague (Czech Republic)	-	-	1	3.4%	2	3.1%	2	5.0%	0	-	N/A	-100.0%
Quebec City	-	-	1	3.4%	-	-	-	-	-	-	N/A	N/A
Scotland	-	-	-	-	1	1.5%	-	-	-	-	N/A	N/A
Spain	1	0.9%	4	13.8%	13	20.0%	15	37.5%	11	16.9%	1000.0%	-26.7%
Washington D.C. Internship [4]	-	-	-	-	-	-	-	-	-	-	N/A	N/A
Other Programs [5]	3	2.8%	11	37.9%	-	-	2	5.0%	4	6.2%	33.3%	100.0%
<b>Total</b>	<b>106</b>		<b>29</b>		<b>65</b>		<b>40</b>		<b>65</b>		<b>-38.7%</b>	<b>62.5%</b>

[1] This data is not system-generated; it is self-reported by the unit. Numbers include Ramapo (& non-Ramapo) students enrolled in at least one course involving a study-abroad destination.

[2] The Costa Rica programs (Intensa Spanish Language, and Eco-Systems) were previously sponsored by Ramapo. As of AY06-07, programs in Costa Rica are sponsored by the NJ State Consortium for International Students (NJSCIS).

[3] The England Regents program ended in AY05-06. Programs in England are now sponsored by the NJSCIS.

[4] The Washington DC program was a credit-bearing semester sponsored by Ramapo.

[5] Prior to 06-07, data represents participation in non-Ramapo sponsored programs. In 08-09, data represents "worldwide" destinations.

[6] Beginning in Spring 2006, Ramapo students participated in programs sponsored by the NJSCIS.

During AY 05-06 only 4 programs were sponsored entirely through Ramapo (American SW, American West, India & Australia).

[7] After Winter 2006, only one program (the India Semester) was offered entirely through Ramapo. Programs continue with the NJSCIS.

Full Semester Programs	F 05 – Spr 06		F 06 – Spr 07		F 07 – Spr 08		F 08 – Spr 09		F 09 – Spr 10		Percent Change 05/06 to 09/10	Percent Change 08/09 to 09/10
	Participants		Participants		Participants		Participants		Participants			
	No.	Pct.	No.	Pct.	No.	Pct.	No.	Pct.	No.	Pct.		
Argentina	-	-	1	2.3%	-	-	-	-	2	4.2%	N/A	N/A
Australia	10	32.3%	12	27.9%	13	28.3%	8	14.8%	2	4.2%	-80.0%	-75.0%
China	-	-	-	-	-	-	1	1.9%	0	-	N/A	-100.0%
Costa Rica	-	-	-	-	1	2.2%	1	1.9%	0	-	N/A	-100.0%
Czech Republic	-	-	-	-	1	2.2%	-	-	-	-	N/A	N/A
England	4	12.9%	7	16.3%	3	6.5%	7	13.0%	8	16.7%	100.0%	14.3%
France	-	-	2	4.7%	2	4.3%	4	7.4%	2	4.2%	N/A	-50.0%
Germany	-	-	-	-	3	6.5%	-	-	-	-	N/A	N/A
India	14	45.2%	10	23.3%	10	21.7%	13	24.1%	10	20.8%	-28.6%	-23.1%
Ireland	1	3.2%	2	4.7%	3	6.5%	4	7.4%	1	2.1%	0.0%	-75.0%
Italy	-	-	2	4.7%	2	4.3%	6	11.1%	8	16.7%	N/A	33.3%
Japan	-	-	2	4.7%	1	2.2%	2	3.7%	3	6.3%	N/A	50.0%
Kenya	-	-	1	2.3%	-	-	-	-	-	-	N/A	N/A
Mexico	-	-	-	-	1	2.2%	-	-	-	-	N/A	N/A
New Zealand	-	-	-	-	-	-	1	1.9%	1	2.1%	N/A	0.0%
Poland	1	3.2%	-	-	-	-	1	1.9%	0	-	-100.0%	-100.0%
Scotland	-	-	-	-	1	2.2%	-	-	2	4.2%	N/A	N/A
Semester at Sea	-	-	1	2.3%	1	2.2%	1	1.9%	0	-	N/A	-100.0%
Spain	1	3.2%	3	7.0%	4	8.7%	5	9.3%	9	18.8%	800.0%	80.0%
<b>Total</b>	<b>31</b>		<b>43</b>		<b>46</b>		<b>54</b>		<b>48</b>		<b>54.8%</b>	<b>-11.1%</b>

