

SECTION IV:

**DEGREES AWARDED AND
STUDENT OUTCOMES**

2010 INSTITUTIONAL PROFILE

TOTAL 2009-10 DEGREES AWARDED = 1,351

By Age

	Bachelor's		Master's		Total	
Less than 20	0	0.0%	0	0.0%	0	0.0%
20 to 24	997	79.3%	2	2.2%	999	73.9%
25 to 29	158	12.6%	18	19.4%	176	13.0%
30 to 39	60	4.8%	30	32.3%	90	6.7%
Greater than 39	43	3.4%	43	46.2%	86	6.4%
	1,258		93		1,351	

By Sex

	Bachelor's		Master's		Total	
Female	752	59.8%	69	74.2%	821	60.8%
Male	506	40.2%	24	25.8%	530	39.2%
	1,258		93		1,351	

By Ethnicity

	Bachelor's		Master's		Total	
Hispanic/Latino, Any Race	101	8.0%	2	2.2%	103	7.6%
American Indian/Native Alaskan, non-Hispanic	1	0.1%	0	0.0%	1	0.1%
Asian, non-Hispanic	50	4.0%	1	1.1%	51	3.8%
Hawaiian/Pacific Islander, non-Hispanic	3	0.2%	0	0.0%	3	0.2%
Black, non-Hispanic	53	4.2%	6	6.5%	59	4.4%
White, non-Hispanic	1,017	80.8%	83	89.2%	1,100	81.4%
Multiple Races, non-Hispanic	25	2.0%	1	1.1%	26	1.9%
Missing	8	0.6%	0	0.0%	8	0.6%
	1,258		93		1,351	

By Citizenship

	Bachelor's		Master's		Total	
U.S. Citizen/Permanent Resident	1,223	97.2%	91	97.8%	1,314	97.3%
non-Citizen/non-Resident	35	2.8%	2	2.2%	37	2.7%
	1,258		93		1,351	

By Ethnicity and Citizenship

	Bachelor's		Master's		Total	
Hispanic/Latino, Any Race	101	8.0%	2	2.2%	103	7.6%
American Indian/Native Alaskan, non-Hispanic	1	0.1%	0	0.0%	1	0.1%
Asian, non-Hispanic	45	3.6%	1	1.1%	46	3.4%
Hawaiian/Pacific Islander, non-Hispanic	3	0.2%	0	0.0%	3	0.2%
Black, non-Hispanic	51	4.1%	6	6.5%	57	4.2%
White, non-Hispanic	993	78.9%	81	87.1%	1,074	79.5%
Multiple Races, non-Hispanic	24	1.9%	1	1.1%	25	1.9%
non-Citizen/non-Resident	35	2.8%	2	2.2%	37	2.7%
Missing	5	0.4%	0	0.0%	5	0.4%
	1,258		93		1,351	

By Status When First Admitted

	Bachelor's		Master's		Total	
Regular Admit	544	43.2%	93	100.0%	637	47.2%
Special Admit	41	3.3%	0	0.0%	41	3.0%
EOF Admit	34	2.7%	0	0.0%	34	2.5%
Transfer Admit	634	50.4%	0	0.0%	634	46.9%
EOF Transfer Admit	5	0.4%	0	0.0%	5	0.4%
	1,258		93		1,351	

By Degree Type

	Bachelor's		Master's		Total	
Bachelor of Arts (BA)	714	56.8%	0	0.0%	714	52.8%
Bachelor of Science (BS)	424	33.7%	0	0.0%	424	31.4%
Bachelor of Science in Nursing (BSN)	97	7.7%	0	0.0%	97	7.2%
Bachelor of Social Work (BSW)	23	1.8%	0	0.0%	23	1.7%
Master of Arts in Liberal Studies (MALS)	0	0.0%	7	7.5%	7	0.5%
Master of Business Administration (MBA)	0	0.0%	4	4.3%	4	0.3%
Master of Science in Educational Technology (MSET)	0	0.0%	69	74.2%	69	5.1%
Master of Science in Nursing (MSN)	0	0.0%	13	14.0%	13	1.0%
	1,258		93		1,351	

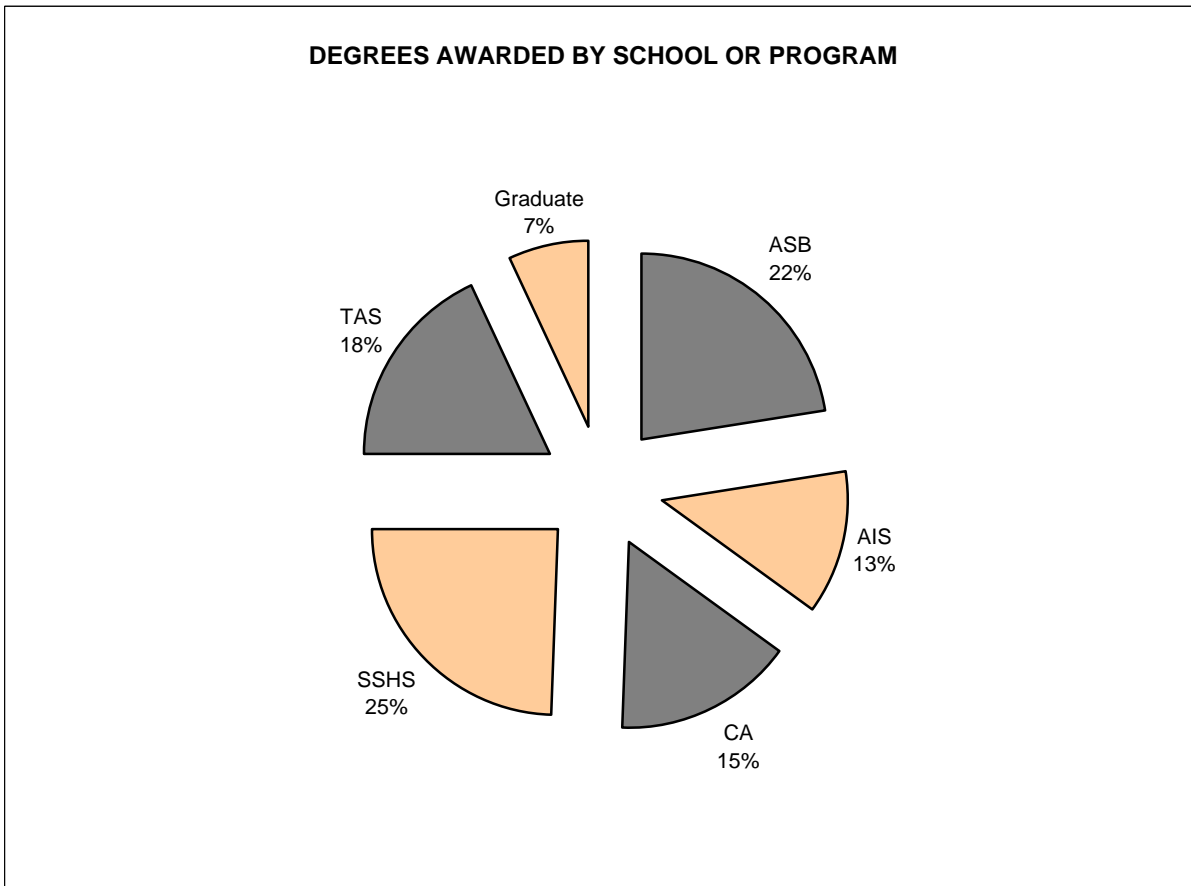
TOTAL 2009-10 DEGREES AWARDED = 1,351

	Bachelor of Arts (BA)		Bachelor of Science (BS)		Bachelor of Science in Nursing (BSN)		Bachelor of Social Work (BSW)		Master of Arts in Liberal Studies (MALS)		Master of Business Admin. (MBA)		Master of Science in Ed. Tech. (MSET)		Master of Science in Nursing (MSN)	
	Number	Percent	Number	Percent	Number	Percent	Number	Percent	Number	Percent	Number	Percent	Number	Percent	Number	Percent
By Age																
Less than 20	0	0.0%	0	0.0%	0	0.0%	0	0.0%	0	0.0%	0	0.0%	0	0.0%	0	0.0%
20 to 24	583	81.7%	326	76.9%	72	74.2%	16	69.6%	0	0.0%	0	0.0%	2	2.9%	0	0.0%
25 to 29	86	12.0%	60	14.2%	10	10.3%	2	8.7%	1	14.3%	0	0.0%	14	20.3%	3	23.1%
30 to 39	29	4.1%	22	5.2%	7	7.2%	2	8.7%	1	14.3%	2	50.0%	26	37.7%	1	7.7%
> 39	16	2.2%	16	3.8%	8	8.2%	3	13.0%	5	71.4%	2	50.0%	27	39.1%	9	69.2%
	714		424		97		23		7		4		69		13	
By Sex																
Female	452	63.3%	199	46.9%	82	84.5%	19	82.6%	5	71.4%	2	50.0%	49	71.0%	13	100.0%
Male	262	36.7%	225	53.1%	15	15.5%	4	17.4%	2	28.6%	2	50.0%	20	29.0%	0	0.0%
	714		424		97		23		7		4		69		13	
By Ethnicity																
Hispanic/Latino, Any Race	57	8.7%	32	8.2%	11	12.8%	1	4.5%	0	0.0%	0	0.0%	2	3.0%	0	0.0%
Am. Indian/Native Alaskan, non-Hispanic	1	0.2%	0	0.0%	0	0.0%	0	0.0%	0	0.0%	0	0.0%	0	0.0%	0	0.0%
Asian, non-Hispanic	14	2.1%	22	5.6%	14	16.3%	0	0.0%	0	0.0%	0	0.0%	1	1.5%	0	0.0%
Hawaiian/Pacific Islander, non-Hispanic	0	0.0%	1	0.3%	2	2.3%	0	0.0%	0	0.0%	0	0.0%	0	0.0%	0	0.0%
Black, non-Hispanic	29	4.4%	14	3.6%	7	8.1%	3	13.6%	0	0.0%	0	0.0%	4	6.0%	2	15.4%
White, non-Hispanic	594	90.4%	343	87.5%	61	70.9%	19	86.4%	7	100.0%	4	100.0%	62	92.5%	10	76.9%
Multiple Races, non-Hispanic	15	2.3%	8	2.0%	2	2.3%	0	0.0%	0	0.0%	0	0.0%	0	0.0%	1	7.7%
Missing	4	0.6%	4	1.0%	0	0.0%	0	0.0%	0	0.0%	0	0.0%	0	0.0%	0	0.0%
	714		424		97		23		7		4		69		13	
By Citizenship																
U.S. Citizen	706	98.9%	402	94.8%	92	94.8%	23	100.0%	7	100.0%	4	100.0%	67	97.1%	13	100.0%
non-Citizen	8	1.1%	22	5.2%	5	5.2%	0	0.0%	0	0.0%	0	0.0%	2	2.9%	0	0.0%
	714		424		97		23		7		4		69		13	
By Ethnicity & Citizenship																
Hispanic/Latino, Any Race	57	8.0%	32	7.5%	11	11.3%	1	4.3%	0	0.0%	0	0.0%	2	2.9%	0	0.0%
Am. Indian/Native Alaskan, non-Hispanic	1	0.1%	0	0.0%	0	0.0%	0	0.0%	0	0.0%	0	0.0%	0	0.0%	0	0.0%
Asian, non-Hispanic	14	2.0%	19	4.5%	12	12.4%	0	0.0%	0	0.0%	0	0.0%	1	1.4%	0	0.0%
Hawaiian/Pacific Islander, non-Hispanic	0	0.0%	1	0.2%	2	2.1%	0	0.0%	0	0.0%	0	0.0%	0	0.0%	0	0.0%
Black, non-Hispanic	29	4.1%	12	2.8%	7	7.2%	3	13.0%	0	0.0%	0	0.0%	4	5.8%	2	15.4%
White, non-Hispanic	588	82.4%	327	77.1%	59	60.8%	19	82.6%	7	100.0%	4	100.0%	60	87.0%	10	76.9%
Multiple Races, non-Hispanic	15	2.1%	8	1.9%	1	1.0%	0	0.0%	0	0.0%	0	0.0%	0	0.0%	1	7.7%
Nonresident Alien	8	1.1%	22	5.2%	5	5.2%	0	0.0%	0	0.0%	0	0.0%	2	2.9%	0	0.0%
Missing	2	0.3%	3	0.7%	0	0.0%	0	0.0%	0	0.0%	0	0.0%	0	0.0%	0	0.0%
	714		424		97		23		7		4		69		13	
By Initial Admit Type																
Regular	288	40.3%	207	48.8%	41	42.3%	8	34.8%	7	100.0%	4	100.0%	69	100.0%	13	100.0%
Special	27	3.8%	9	2.1%	3	3.1%	2	8.7%	0	0.0%	0	0.0%	0	0.0%	0	0.0%
EOF	28	3.9%	2	0.5%	4	4.1%	0	0.0%	0	0.0%	0	0.0%	0	0.0%	0	0.0%
Transfer	369	51.7%	203	47.9%	49	50.5%	13	56.5%	0	0.0%	0	0.0%	0	0.0%	0	0.0%
EOF Transfer	2	0.3%	3	0.7%	0	0.0%	0	0.0%	0	0.0%	0	0.0%	0	0.0%	0	0.0%
	714		424		97		23		7		4		69		13	

TOTAL 2009-10 DEGREES AWARDED = 1,351

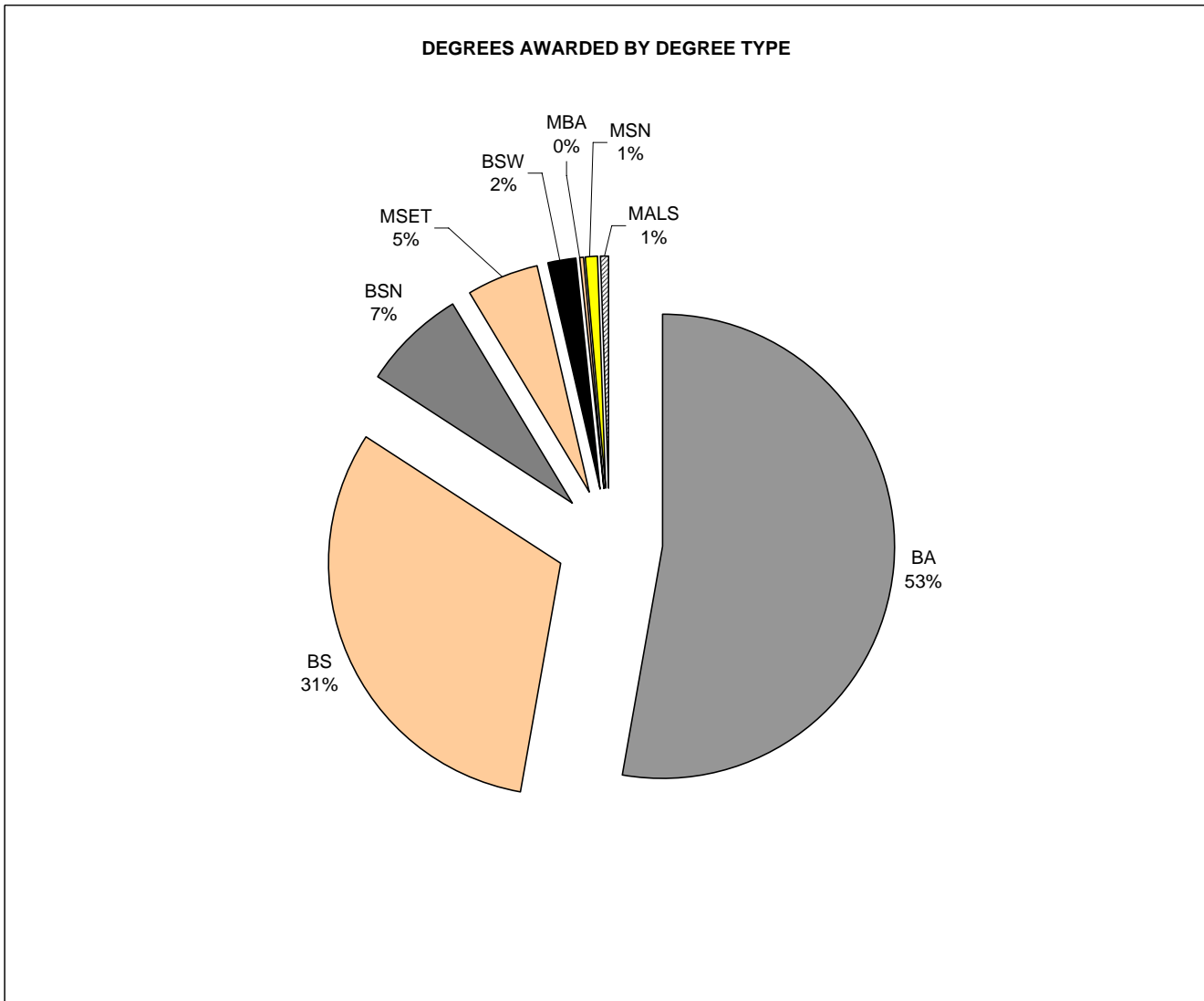
By School and Combined Graduate Programs

Anisfield School of Business	303	22.4%
American and International Studies	170	12.6%
Contemporary Arts	209	15.5%
Social Science and Human Services	331	24.5%
Theoretical and Applied Sciences	245	18.1%
Graduate Degree Programs (combined)	93	6.9%



TOTAL 2009-10 DEGREES AWARDED = 1,351

School or Program	BA		BS		BSN		BSW		MA		MBA		MSET		MSN	
	No.	Pct.	No.	Pct.	No.	Pct.	No.	Pct.	No.	Pct.	No.	Pct.	No.	Pct.	No.	Pct.
Anisfield School of Business	27	3.8%	276	65.1%	0	0.0%	0	0.0%	0	0.0%	0	0.0%	0	0.0%	0	0.0%
American & Int'l. Studies	170	23.8%	0	0.0%	0	0.0%	0	0.0%	0	0.0%	0	0.0%	0	0.0%	0	0.0%
Contemporary Arts	209	29.3%	0	0.0%	0	0.0%	0	0.0%	0	0.0%	0	0.0%	0	0.0%	0	0.0%
Soc. Science & Human Services	308	43.1%	0	0.0%	0	0.0%	23	100.0%	0	0.0%	0	0.0%	0	0.0%	0	0.0%
Theoretical & Applied Science	0	0.0%	148	34.9%	97	100.0%	0	0.0%	0	0.0%	0	0.0%	0	0.0%	0	0.0%
Grad. Liberal Studies (MALS)	0	0.0%	0	0.0%	0	0.0%	0	0.0%	7	100.0%	0	0.0%	0	0.0%	0	0.0%
Grad. Business Admin. (MBA)	0	0.0%	0	0.0%	0	0.0%	0	0.0%	0	0.0%	4	100.0%	0	0.0%	0	0.0%
Grad. Educational Tech. (MSET)	0	0.0%	0	0.0%	0	0.0%	0	0.0%	0	0.0%	0	0.0%	69	100.0%	0	0.0%
Grad. Nursing (MSN)	0	0.0%	0	0.0%	0	0.0%	0	0.0%	0	0.0%	0	0.0%	0	0.0%	13	100.0%
	714		424		97		23		7		4		69		13	

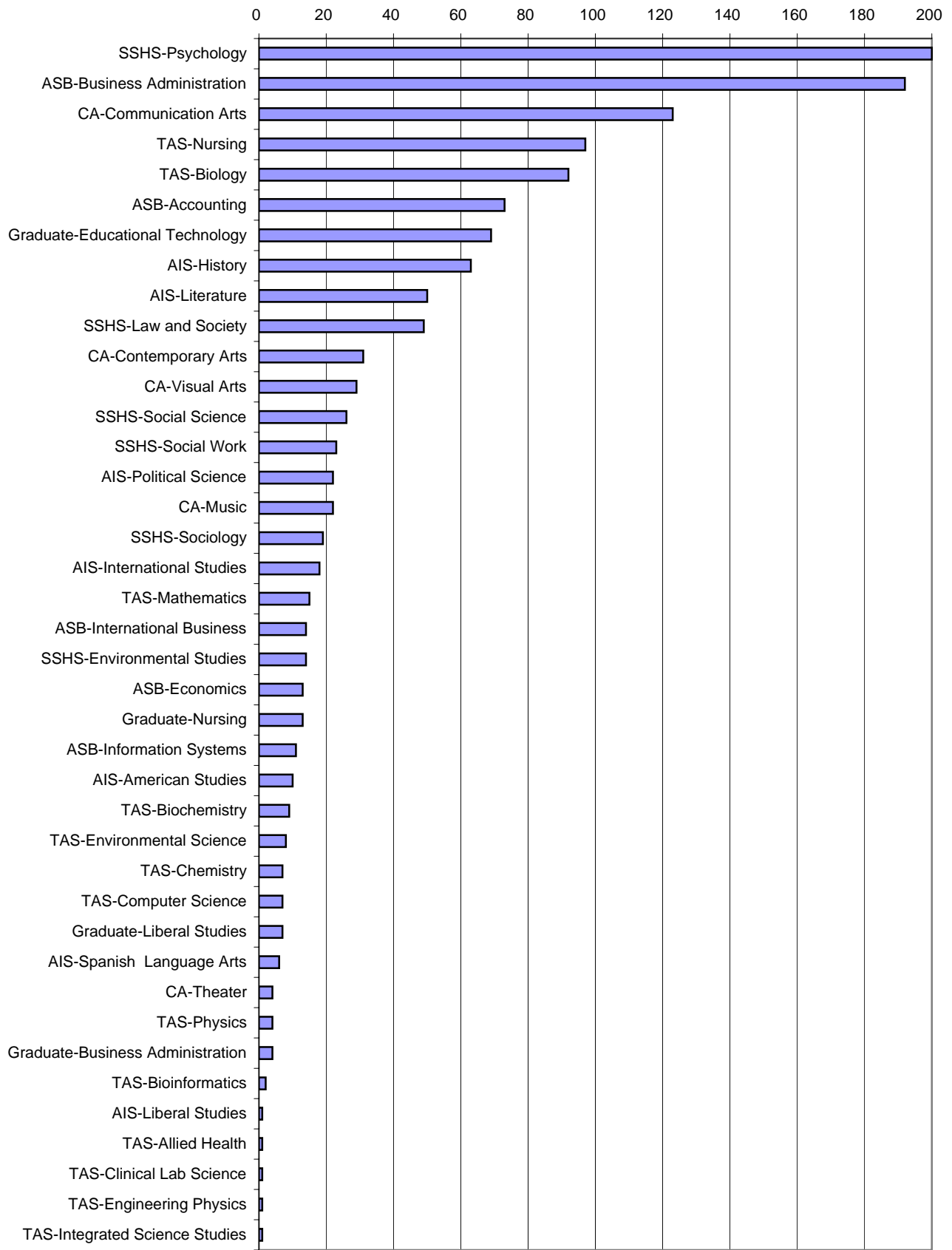


By School and Major (with Graduate Programs)

ASB	Accounting	73	5.4%
	Business Administration	192	14.2%
	Economics	13	1.0%
	Information Systems	11	0.8%
	International Business	14	1.0%
AIS	American Studies	10	0.7%
	History	63	4.7%
	International Studies	18	1.3%
	Liberal Studies	1	0.1%
	Literature	50	3.7%
	Political Science	22	1.6%
	Spanish Language Arts	6	0.4%
CA	Communication Arts	123	9.1%
	Contemporary Arts	31	2.3%
	Music	22	1.6%
	Theater	4	0.3%
	Visual Arts	29	2.1%
SSHS	Environmental Studies	14	1.0%
	Law and Society	49	3.6%
	Psychology	200	14.8%
	Social Science	26	1.9%
	Social Work	23	1.7%
	Sociology	19	1.4%
TAS	Allied Health	1	0.1%
	Biochemistry	9	0.7%
	Bioinformatics	2	0.1%
	Biology	92	6.8%
	Chemistry	7	0.5%
	Clinical Lab Science	1	0.1%
	Computer Science	7	0.5%
	Engineering Physics	1	0.1%
	Environmental Science	8	0.6%
	Integrated Science Studies	1	0.1%
	Mathematics	15	1.1%
	Nursing	97	7.2%
	Physics	4	0.3%
	GRADUATE PROGRAMS	Liberal Studies	7
Business Administration		4	0.3%
Educational Technology		69	5.1%
Nursing		13	1.0%

1,351

DEGREES AWARDED 2009-10 BY SCHOOL AND MAJOR/PROGRAM

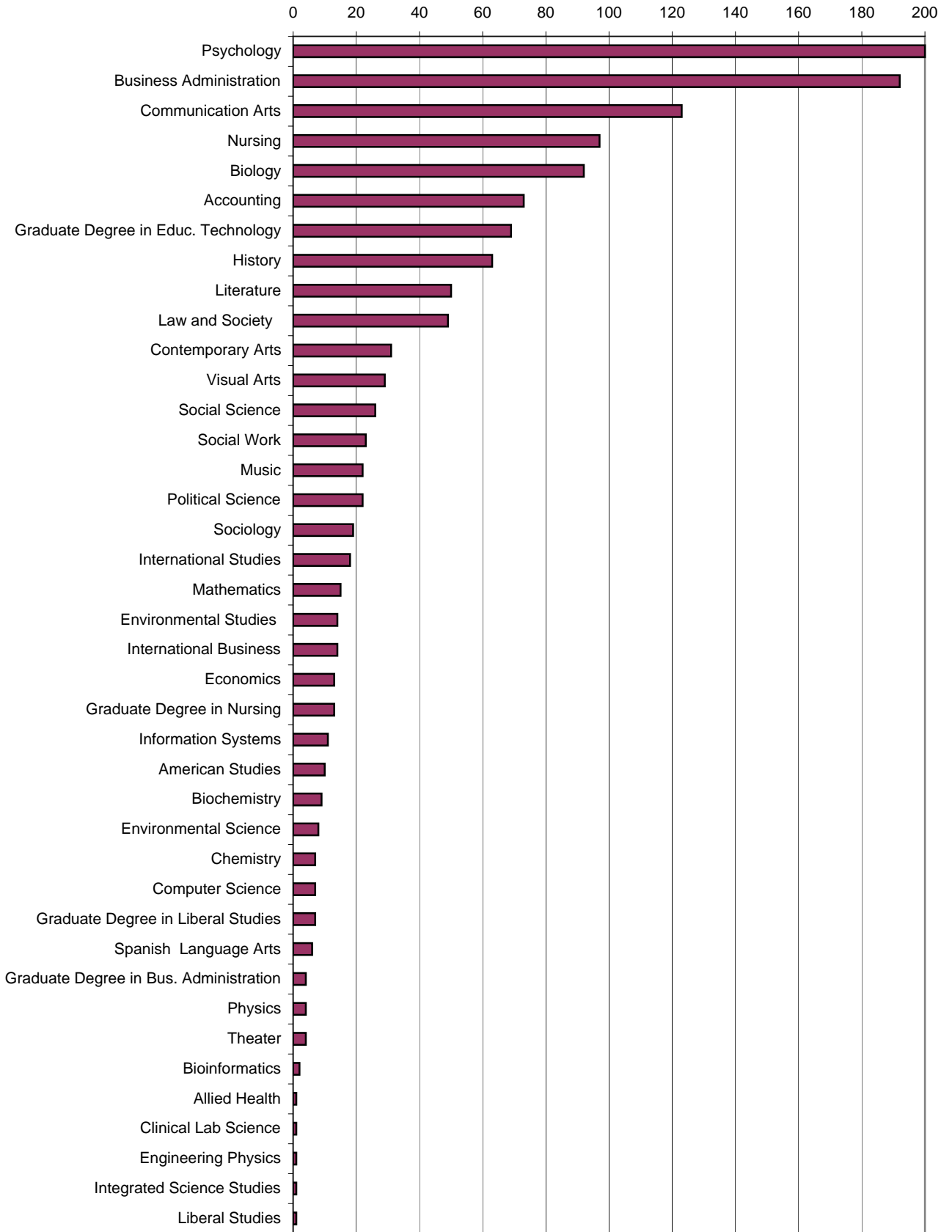


TOTAL 2009-10 DEGREES AWARDED = 1,351

By Major or Graduate Program

Accounting	73	5.4%
Allied Health	1	0.1%
American Studies	10	0.7%
Biochemistry	9	0.7%
Bioinformatics	2	0.1%
Biology	92	6.8%
Business Administration	192	14.2%
Chemistry	7	0.5%
Clinical Lab Science	1	0.1%
Communication Arts	123	9.1%
Computer Science	7	0.5%
Contemporary Arts	31	2.3%
Economics	13	1.0%
Engineering Physics	1	0.1%
Environmental Science	8	0.6%
Environmental Studies	14	1.0%
Graduate Degree in Business Administration	4	0.3%
Graduate Degree in Educational Technology	69	5.1%
Graduate Degree in Liberal Studies	7	0.5%
Graduate Degree in Nursing	13	1.0%
History	63	4.7%
Information Systems	11	0.8%
Integrated Science Studies	1	0.1%
International Business	14	1.0%
International Studies	18	1.3%
Law and Society	49	3.6%
Liberal Studies	1	0.1%
Literature	50	3.7%
Mathematics	15	1.1%
Music	22	1.6%
Nursing	97	7.2%
Physics	4	0.3%
Political Science	22	1.6%
Psychology	200	14.8%
Social Science	26	1.9%
Social Work	23	1.7%
Sociology	19	1.4%
Spanish Language Arts	6	0.4%
Theater	4	0.3%
Visual Arts	29	2.1%
	1,351	100.0%

2009-10 DEGREES AWARDED BY MAJOR

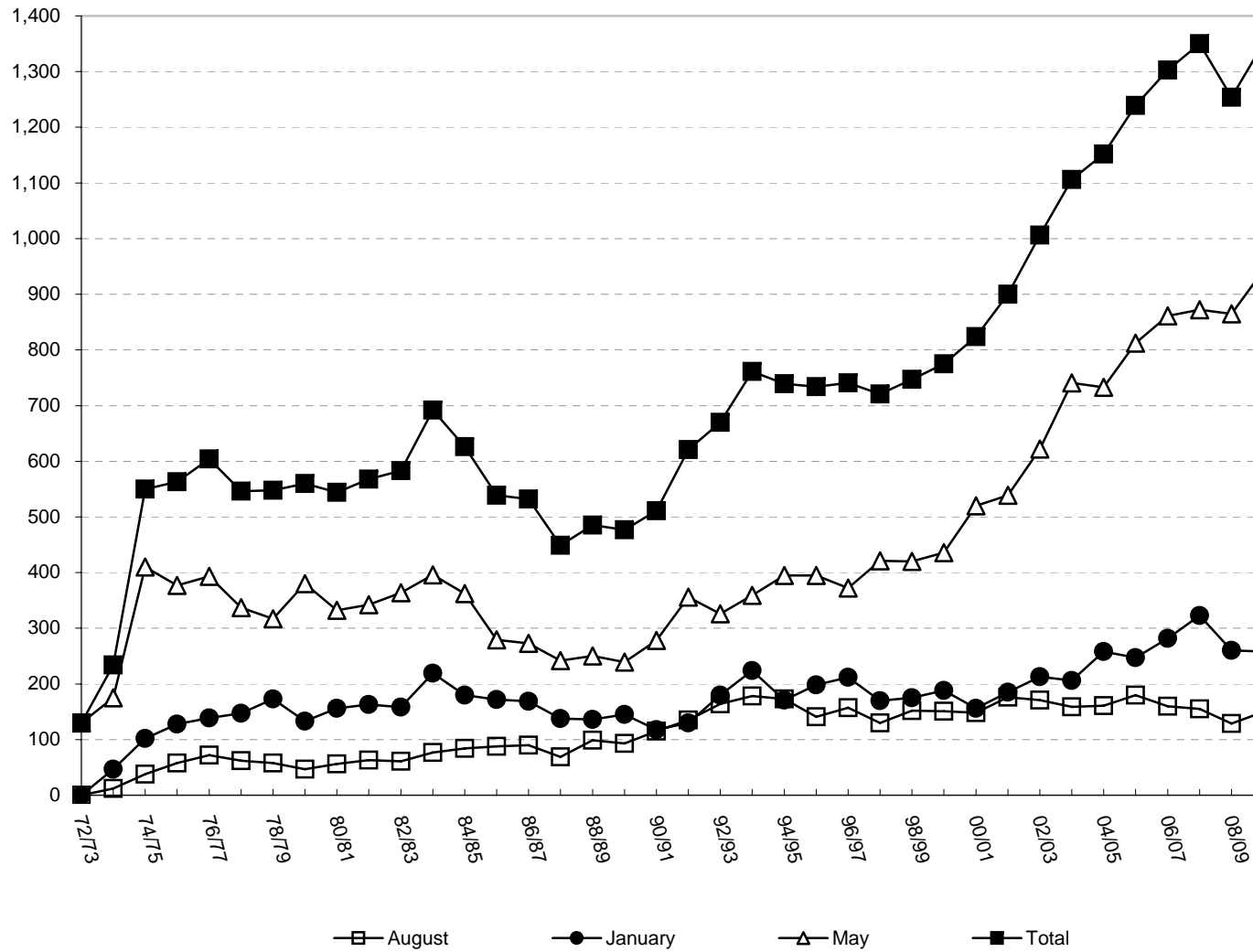


TOTAL DEGREES AWARDED 1972 TO 2009-10

Year	AUGUST DEGREES			JANUARY DEGREES			MAY DEGREES			TOTAL FISCAL YEAR DEGREES			CUMULATIVE DEGREES AWARDED SINCE 1972-73
	Number of Degrees Awarded	Percent Change From Previous August	Cumulative Percent Change From Aug. 1973	Number of Degrees Awarded	Percent Change From Previous January	Cumulative Percent Change From Jan. 1974	Number of Degrees Awarded	Percent Change From Previous May	Cumulative Percent Change From May 1973	Number of Degrees Awarded	Percent Change From Previous Fiscal Year	Cumulative Percent Change From 1972-73	
1972-73	N/A	N/A	N/A	N/A	N/A	N/A	130	N/A	0.0%	130	N/A	0.0%	130
1973-74	12	N/A	0.0%	47	N/A	0.0%	175	34.6%	34.6%	234	80.0%	80.0%	364
1974-75	38	216.7%	216.7%	102	117.0%	117.0%	410	134.3%	215.4%	550	135.0%	323.1%	914
1975-76	58	52.6%	383.3%	128	25.5%	172.3%	377	-8.0%	190.0%	563	2.4%	333.1%	1,477
1976-77	72	24.1%	500.0%	139	8.6%	195.7%	393	4.2%	202.3%	604	7.3%	364.6%	2,081
1977-78	62	-13.9%	416.7%	147	5.8%	212.8%	337	-14.2%	159.2%	546	-9.6%	320.0%	2,627
1978-79	58	-6.5%	383.3%	173	17.7%	268.1%	317	-5.9%	143.8%	548	0.4%	321.5%	3,175
1979-80	47	-19.0%	291.7%	133	-23.1%	183.0%	380	19.9%	192.3%	560	2.2%	330.8%	3,735
1980-81	56	19.1%	366.7%	156	17.3%	231.9%	332	-12.6%	155.4%	544	-2.9%	318.5%	4,279
1981-82	63	12.5%	425.0%	163	4.5%	246.8%	342	3.0%	163.1%	568	4.4%	336.9%	4,847
1982-83	61	-3.2%	408.3%	158	-3.1%	236.2%	364	6.4%	180.0%	583	2.6%	348.5%	5,430
1983-84	77	26.2%	541.7%	219	38.6%	366.0%	396	8.8%	204.6%	692	18.7%	432.3%	6,122
1984-85	84	9.1%	600.0%	180	-17.8%	283.0%	362	-8.6%	178.5%	626	-9.5%	381.5%	6,748
1985-86	88	4.8%	633.3%	172	-4.4%	266.0%	279	-22.9%	114.6%	539	-13.9%	314.6%	7,287
1986-87	90	2.3%	650.0%	169	-1.7%	259.6%	273	-2.2%	110.0%	532	-1.3%	309.2%	7,819
1987-88	69	-23.3%	475.0%	138	-18.3%	193.6%	242	-11.4%	86.2%	449	-15.6%	245.4%	8,268
1988-89	99	43.5%	725.0%	136	-1.4%	189.4%	250	3.3%	92.3%	485	8.0%	273.1%	8,753
1989-90	93	-6.1%	675.0%	145	6.6%	208.5%	239	-4.4%	83.8%	477	-1.6%	266.9%	9,230
1990-91	115	23.7%	858.3%	118	-18.6%	151.1%	278	16.3%	113.8%	511	7.1%	293.1%	9,741
1991-92	135	17.4%	1025.0%	130	10.2%	176.6%	356	28.1%	173.8%	621	21.5%	377.7%	10,362
1992-93	164	21.5%	1266.7%	180	38.5%	283.0%	326	-8.4%	150.8%	670	7.9%	415.4%	11,032
1993-94	178	8.5%	1383.3%	224	24.4%	376.6%	359	10.1%	176.2%	761	13.6%	485.4%	11,793
1994-95	173	-2.8%	1341.7%	171	-23.7%	263.8%	395	10.0%	203.8%	739	-2.9%	468.5%	12,532
1995-96	141	-18.5%	1075.0%	198	15.8%	321.3%	395	0.0%	203.8%	734	-0.7%	464.6%	13,266
1996-97	157	11.3%	1208.3%	212	7.1%	351.1%	372	-5.8%	186.2%	741	1.0%	470.0%	14,007
1997-98	130	-17.2%	983.3%	170	-19.8%	261.7%	421	13.2%	223.8%	721	-2.7%	454.6%	14,728
1998-99	152	16.9%	1166.7%	175	2.9%	272.3%	420	-0.2%	223.1%	747	3.6%	474.6%	15,475
1999-00	151	-0.7%	1158.3%	188	7.4%	300.0%	436	3.8%	235.4%	775	3.7%	496.2%	16,250
2000-01	148	-2.0%	1133.3%	156	-17.0%	231.9%	520	19.3%	300.0%	824	6.3%	533.8%	17,074
2001-02	176	18.9%	1366.7%	185	18.6%	293.6%	539	3.7%	314.6%	900	9.2%	592.3%	17,974
2002-03	171	-2.8%	1325.0%	213	15.1%	353.2%	622	15.4%	378.5%	1,006	11.8%	673.8%	18,980
2003-04	159	-7.0%	1225.0%	206	-3.3%	338.3%	741	19.1%	470.0%	1,106	9.9%	750.8%	20,086
2004-05	161	1.3%	1241.7%	258	25.2%	448.9%	733	-1.1%	463.8%	1,152	4.2%	786.2%	21,238
2005-06	180	11.8%	1400.0%	247	-4.3%	425.5%	812	10.8%	524.6%	1,239	7.6%	853.1%	22,477
2006-07	160	-11.1%	1233.3%	282	14.2%	500.0%	861	6.0%	562.3%	1,303	5.2%	902.3%	23,780
2007-08	155	-3.1%	1191.7%	323	14.5%	587.2%	872	1.3%	570.8%	1,350	3.6%	938.5%	25,130
2008-09	129	-16.8%	975.0%	260	-19.5%	453.2%	865	-0.8%	565.4%	1,254	-7.1%	864.6%	26,384
2009-10	150	16.3%	1150.0%	258	-0.8%	448.9%	943	9.0%	625.4%	1,351	7.7%	939.2%	27,735

* Degrees are reported on a fiscal year basis. For example, 2009-10 graduates include degree recipients from August 2009, January 2010, and May 2010.

DEGREES AWARDED BY FISCAL YEAR, 1972-73 TO 2009-10



DEGREES AWARDED BY AGE, 2005-06 TO 2009-10

Bachelor's	2005-06		2006-07		2007-08		2008-09		2009-10		Pct. Change 05/06 to 09/10	Pct. Change 08/09 to 09/10
	No.	Pct.	No.	Pct.	No.	Pct.	No.	Pct.	No.	Pct.		
Less Than 20	0	0.0%	1	0.1%	0	0.0%	0	0.0%	0	0.0%	N/A	N/A
20 to 24	758	68.7%	869	72.0%	928	75.2%	874	76.5%	997	79.3%	31.5%	14.1%
25 to 29	195	17.7%	193	16.0%	199	16.1%	173	15.1%	158	12.6%	-19.0%	-8.7%
30 to 39	82	7.4%	78	6.5%	51	4.1%	53	4.6%	60	4.8%	-26.8%	13.2%
40 and Over	68	6.2%	66	5.5%	56	4.5%	42	3.7%	43	3.4%	-36.8%	2.4%
Total	1,103		1,207		1,234		1,142		1,258		14.1%	10.2%

Graduate	2005-06		2006-07		2007-08		2008-09		2009-10		Pct. Change 05/06 to 09/10	Pct. Change 08/09 to 09/10
	No.	Pct.	No.	Pct.	No.	Pct.	No.	Pct.	No.	Pct.		
Less Than 20	0	0.0%	0	0.0%	0	0.0%	0	0.0%	0	0.0%	N/A	N/A
20 to 24	1	0.7%	0	0.0%	0	0.0%	2	1.8%	2	2.2%	100.0%	0.0%
25 to 29	42	30.9%	20	20.8%	39	33.6%	31	27.7%	18	19.4%	-57.1%	-41.9%
30 to 39	37	27.2%	29	30.2%	22	19.0%	44	39.3%	30	32.3%	-18.9%	-31.8%
40 and Over	56	41.2%	47	49.0%	55	47.4%	35	31.3%	43	46.2%	-23.2%	22.9%
Total	136		96		116		112		93		-31.6%	-17.0%

Total	2005-06		2006-07		2007-08		2008-09		2009-10		Pct. Change 05/06 to 09/10	Pct. Change 08/09 to 09/10
	No.	Pct.	No.	Pct.	No.	Pct.	No.	Pct.	No.	Pct.		
Less Than 20	0	0.0%	1	0.1%	0	0.0%	0	0.0%	0	0.0%	N/A	N/A
20 to 24	759	61.3%	869	66.7%	928	68.7%	876	69.9%	999	73.9%	31.6%	14.0%
25 to 29	237	19.1%	213	16.3%	238	17.6%	204	16.3%	176	13.0%	-25.7%	-13.7%
30 to 39	119	9.6%	107	8.2%	73	5.4%	97	7.7%	90	6.7%	-24.4%	-7.2%
40 and Over	124	10.0%	113	8.7%	111	8.2%	77	6.1%	86	6.4%	-30.6%	11.7%
Total	1,239		1,303		1,350		1,254		1,351		9.0%	7.7%



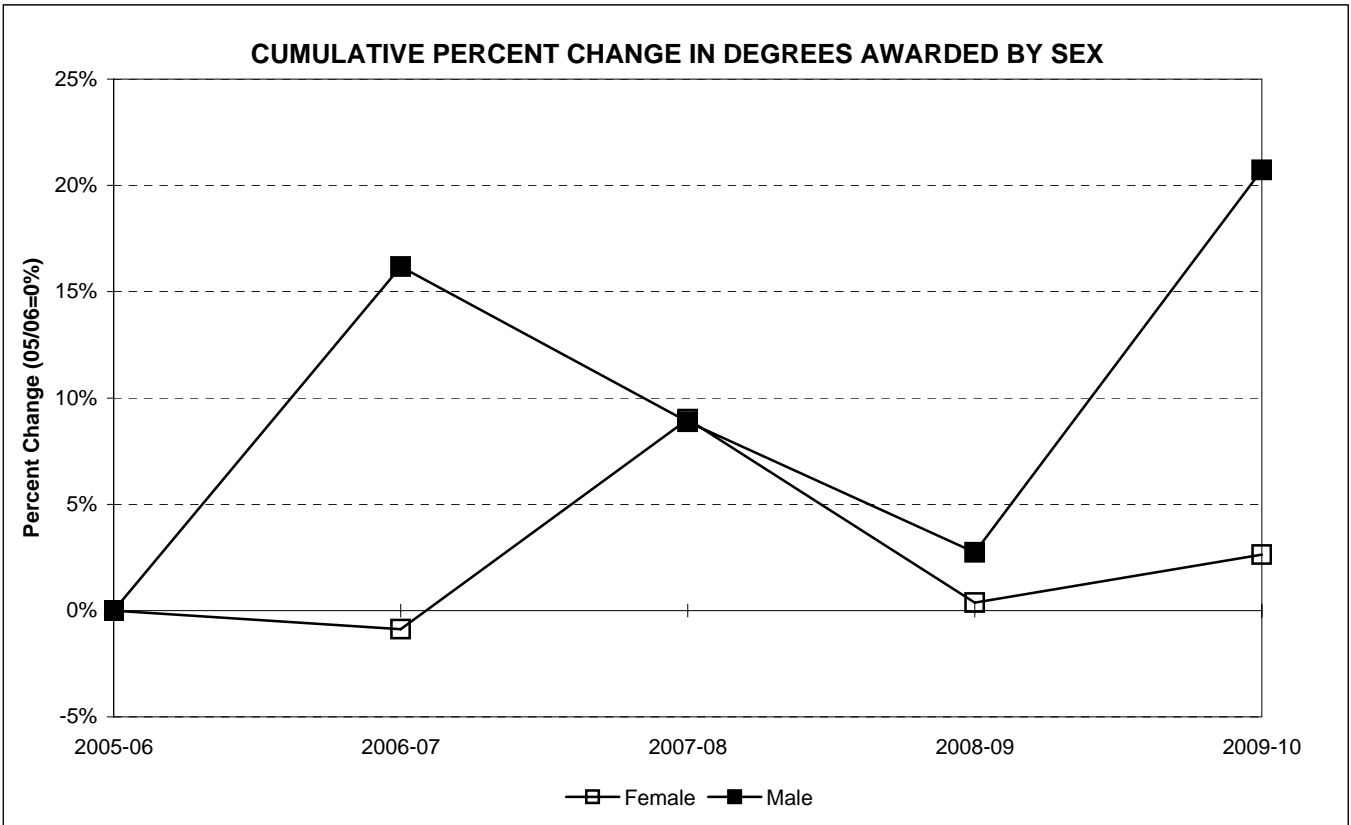
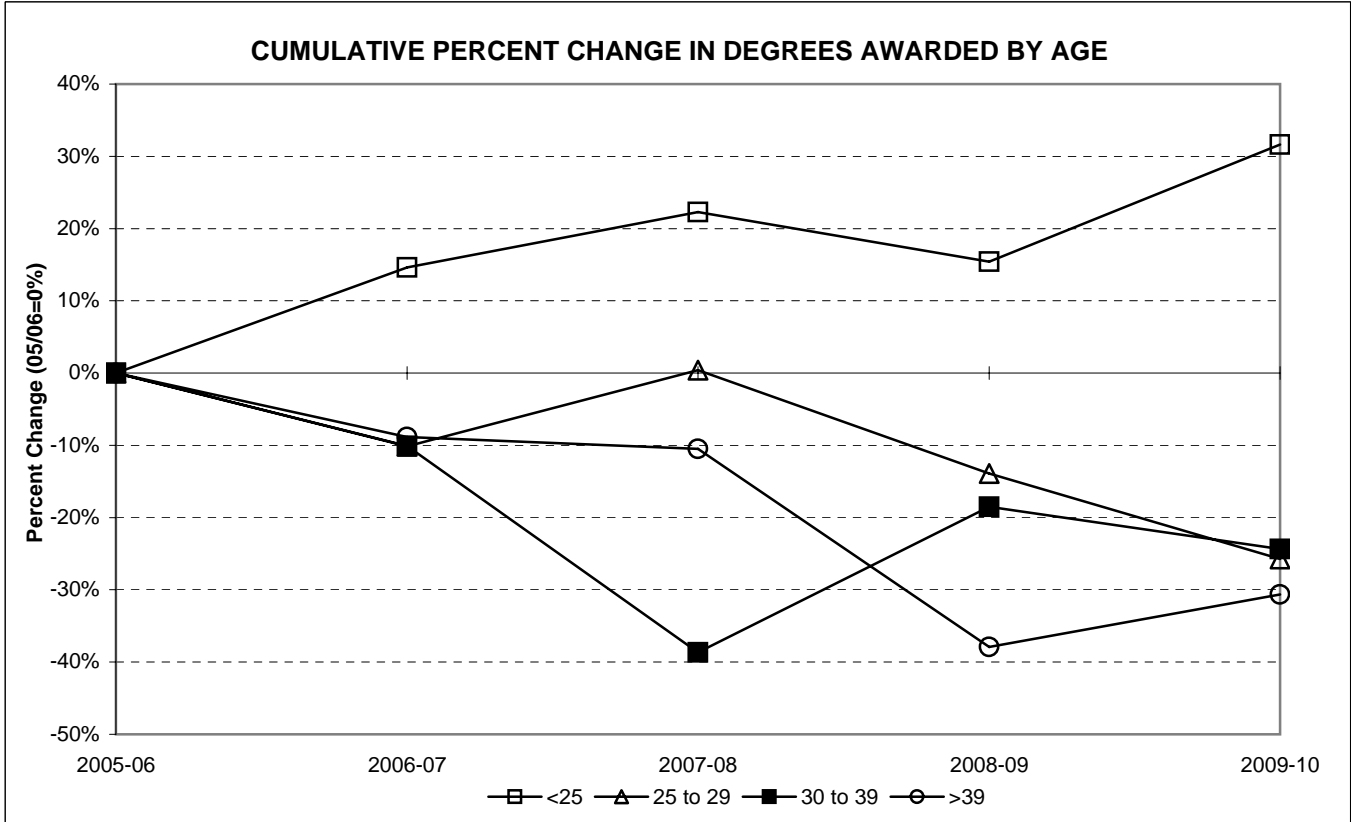
DEGREES AWARDED BY SEX, 2005-06 TO 2009-10

Bachelor's	2005-06		2006-07		2007-08		2008-09		2009-10		Pct. Change 05/06 to 09/10	Pct. Change 08/09 to 09/10
	No.	Pct.	No.	Pct.	No.	Pct.	No.	Pct.	No.	Pct.		
Female	694	62.9%	712	59.0%	776	62.9%	721	63.1%	752	59.8%	8.4%	4.3%
Male	409	37.1%	495	41.0%	458	37.1%	421	36.9%	506	40.2%	23.7%	20.2%
Total	1,103		1,207		1,234		1,142		1,258		14.1%	10.2%

Graduate	2005-06		2006-07		2007-08		2008-09		2009-10		Pct. Change 05/06 to 09/10	Pct. Change 08/09 to 09/10
	No.	Pct.	No.	Pct.	No.	Pct.	No.	Pct.	No.	Pct.		
Female	106	77.9%	81	84.4%	96	82.8%	82	73.2%	69	74.2%	-34.9%	-15.9%
Male	30	22.1%	15	15.6%	20	17.2%	30	26.8%	24	25.8%	-20.0%	-20.0%
Total	136		96		116		112		93		-31.6%	-17.0%

Total	2005-06		2006-07		2007-08		2008-09		2009-10		Pct. Change 05/06 to 09/10	Pct. Change 08/09 to 09/10
	No.	Pct.	No.	Pct.	No.	Pct.	No.	Pct.	No.	Pct.		
Female	800	64.6%	793	60.9%	872	64.6%	803	64.0%	821	60.8%	2.6%	2.2%
Male	439	35.4%	510	39.1%	478	35.4%	451	36.0%	530	39.2%	20.7%	17.5%
Total	1,239		1,303		1,350		1,254		1,351		9.0%	7.7%

TOTAL 2009-10 DEGREES AWARDED = 1,351



DEGREES AWARDED BY ETHNICITY^[1], 2005-06 TO 2009-10

	2005-06		2006-07		2007-08		2008-09		2009-10		Pct. Change 05/06 to 09/10	Pct. Change 08/09 to 09/10
	No.	Pct.	No.	Pct.	No.	Pct.	No.	Pct.	No.	Pct.		
Bachelor's												
Hispanic/Latino, Any Race	81	7.3%	89	7.4%	83	6.7%	97	8.5%	101	8.0%	24.7%	4.1%
Am. Indian/Native Alaskan, non-Hispanic	4	0.4%	6	0.5%	0	0.0%	3	0.3%	1	0.1%	-75.0%	-66.7%
Asian, non-Hispanic ^[1]	56	5.1%	69	5.7%	57	4.6%	55	4.8%	50	4.0%	N/A	N/A
Hawaiian/Pacific Islander, non-Hispanic ^[1]	N/A	0.0%	N/A	0.0%	N/A	0.0%	N/A	0.0%	3	0.2%	N/A	N/A
Black, non-Hispanic	78	7.1%	77	6.4%	69	5.6%	55	4.8%	53	4.2%	-32.1%	-3.6%
White, non-Hispanic	884	80.1%	966	80.0%	1,025	83.1%	932	81.6%	1,017	80.8%	15.0%	9.1%
Multiple Races, non-Hispanic ^[1]	N/A	0.0%	N/A	0.0%	N/A	0.0%	N/A	0.0%	25	2.0%	N/A	N/A
Missing	0	0.0%	0	0.0%	0	0.0%	0	0.0%	8	0.6%	N/A	N/A
Total	1,103		1,207		1,234		1,142		1,258		14.1%	10.2%

	2005-06		2006-07		2007-08		2008-09		2009-10		Pct. Change 05/06 to 09/10	Pct. Change 08/09 to 09/10
	No.	Pct.	No.	Pct.	No.	Pct.	No.	Pct.	No.	Pct.		
Graduate												
Hispanic/Latino, Any Race	5	3.7%	3	3.1%	1	0.9%	6	5.4%	2	2.2%	-60.0%	-66.7%
Am. Indian/Native Alaskan, non-Hispanic	1	0.7%	0	0.0%	0	0.0%	0	0.0%	0	0.0%	-100.0%	N/A
Asian, non-Hispanic ^[1]	1	0.7%	4	4.2%	3	2.6%	4	3.6%	1	1.1%	N/A	N/A
Hawaiian/Pacific Islander, non-Hispanic ^[1]	N/A	0.0%	N/A	0.0%	N/A	0.0%	N/A	0.0%	0	0.0%	N/A	N/A
Black, non-Hispanic	6	4.4%	3	3.1%	6	5.2%	4	3.6%	6	6.5%	0.0%	50.0%
White, non-Hispanic	123	90.4%	86	89.6%	106	91.4%	98	87.5%	83	89.2%	-32.5%	-15.3%
Multiple Races, non-Hispanic ^[1]	N/A	0.0%	N/A	0.0%	N/A	0.0%	N/A	0.0%	1	1.1%	N/A	N/A
Missing	0	0.0%	0	0.0%	0	0.0%	0	0.0%	0	0.0%	N/A	N/A
Total	136		96		116		112		93		-31.6%	-17.0%

	2005-06		2006-07		2007-08		2008-09		2009-10		Pct. Change 05/06 to 09/10	Pct. Change 08/09 to 09/10
	No.	Pct.	No.	Pct.	No.	Pct.	No.	Pct.	No.	Pct.		
Total												
Hispanic/Latino, Any Race	86	6.9%	92	7.1%	84	6.2%	103	8.2%	103	7.6%	19.8%	0.0%
Am. Indian/Native Alaskan, non-Hispanic	5	0.4%	6	0.5%	0	0.0%	3	0.2%	1	0.1%	-80.0%	-66.7%
Asian, non-Hispanic ^[1]	57	4.6%	73	5.6%	60	4.4%	59	4.7%	51	3.8%	N/A	N/A
Hawaiian/Pacific Islander, non-Hispanic ^[1]	0	0.0%	0	0.0%	0	0.0%	0	0.0%	3	0.2%	N/A	N/A
Black, non-Hispanic	84	6.8%	80	6.1%	75	5.6%	59	4.7%	59	4.4%	-29.8%	0.0%
White, non-Hispanic	1,007	81.3%	1,052	80.7%	1,131	83.8%	1,030	82.1%	1,100	81.4%	9.2%	6.8%
Multiple Races, non-Hispanic ^[1]	0	0.0%	0	0.0%	0	0.0%	0	0.0%	26	1.9%	N/A	N/A
Missing	0	0.0%	0	0.0%	0	0.0%	0	0.0%	8	0.6%	N/A	N/A
Total	1,239		1,303		1,350		1,254		1,351		9.0%	7.7%



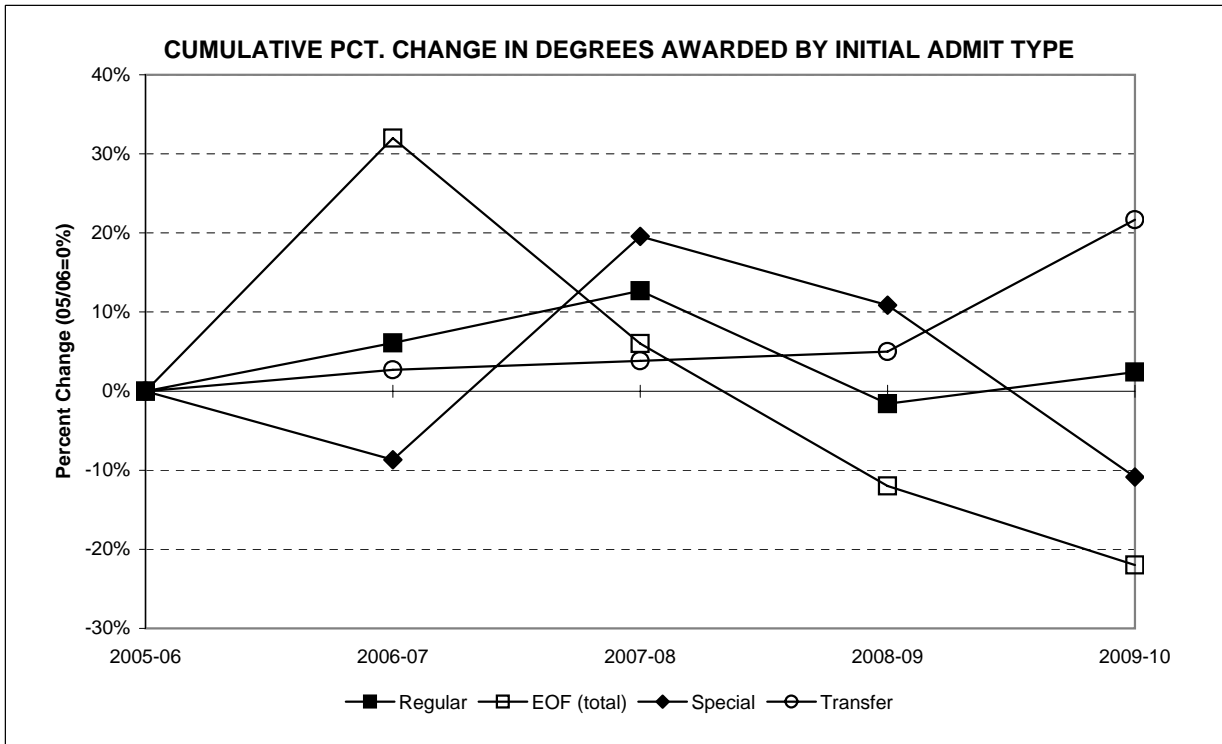
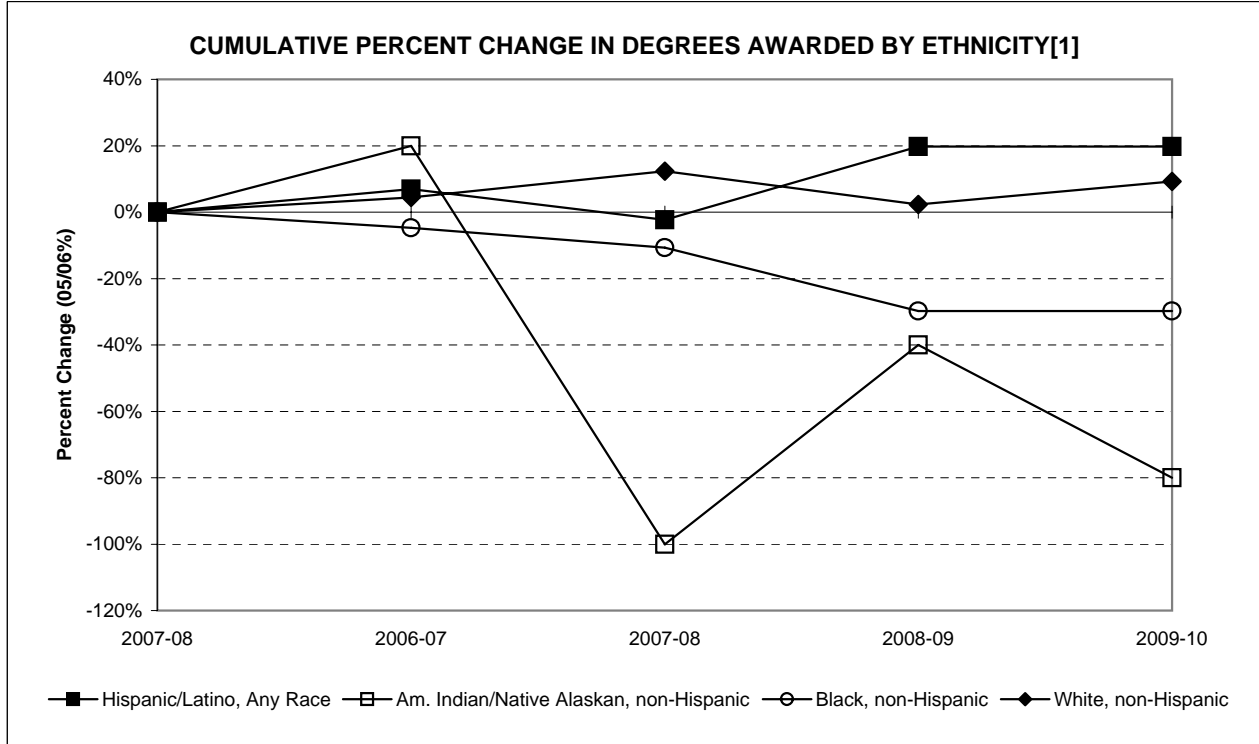
DEGREES AWARDED BY INITIAL ADMISSIONS TYPE, 2005-06 TO 2009-10

	2005-06		2006-07		2007-08		2008-09		2009-10		Pct. Change 05/06 to 09/10	Pct. Change 08/09 to 09/10
	No.	Pct.	No.	Pct.	No.	Pct.	No.	Pct.	No.	Pct.		
Bachelor's												
Regular	486	44.1%	565	46.8%	587	47.6%	500	43.8%	544	43.2%	11.9%	8.8%
EOF non-Transfer	41	3.7%	53	4.4%	46	3.7%	34	3.0%	34	2.7%	-17.1%	0.0%
EOF Transfer	9	0.8%	13	1.1%	7	0.6%	10	0.9%	5	0.4%	-44.4%	-50.0%
Special	46	4.2%	42	3.5%	55	4.5%	51	4.5%	41	3.3%	-10.9%	-19.6%
Transfer	521	47.2%	534	44.2%	539	43.7%	547	47.9%	634	50.4%	21.7%	15.9%
Total	1,103		1,207		1,234		1,142		1,258		14.1%	10.2%

	2005-06		2006-07		2007-08		2008-09		2009-10		Pct. Change 05/06 to 09/10	Pct. Change 08/09 to 09/10
	No.	Pct.	No.	Pct.	No.	Pct.	No.	Pct.	No.	Pct.		
Graduate												
Regular	136	100.0%	95	99.0%	114	98.3%	112	100.0%	93	100.0%	-31.6%	-17.0%
EOF non-Transfer	0	0.0%	0	0.0%	0	0.0%	0	0.0%	0	0.0%	N/A	N/A
EOF Transfer	0	0.0%	0	0.0%	0	0.0%	0	0.0%	0	0.0%	N/A	N/A
Special	0	0.0%	0	0.0%	0	0.0%	0	0.0%	0	0.0%	N/A	N/A
Transfer	0	0.0%	1	1.0%	2	1.7%	0	0.0%	0	0.0%	N/A	N/A
Total	136		96		116		112		93		-31.6%	-17.0%

	2005-06		2006-07		2007-08		2008-09		2009-10		Pct. Change 05/06 to 09/10	Pct. Change 08/09 to 09/10
	No.	Pct.	No.	Pct.	No.	Pct.	No.	Pct.	No.	Pct.		
Total												
Regular	622	50.2%	660	50.7%	701	51.9%	612	48.8%	637	47.2%	2.4%	4.1%
EOF non-Transfer	41	3.3%	53	4.1%	46	3.4%	34	2.7%	34	2.5%	-17.1%	0.0%
EOF Transfer	9	0.7%	13	1.0%	7	0.5%	10	0.8%	5	0.4%	-44.4%	-50.0%
Special	46	3.7%	42	3.2%	55	4.1%	51	4.1%	41	3.0%	-10.9%	-19.6%
Transfer	521	42.1%	535	41.1%	541	40.1%	547	43.6%	634	46.9%	21.7%	15.9%
Total	1,239		1,303		1,350		1,254		1,351		9.0%	7.7%

[1] New Race/Ethnicity categories came into effect in AY09-10 (as listed in headings on top, left). Until at least two years' data is collected, we can not calculate the percent change for the new non-Hispanic categories for: Asian, Hawaiian/Pacific Islander and Multiple-Races. Prior to 2009-10, the counts above for "Asian, non-Hispanic" were formerly grouped together as "Asian or Pacific Islander."



[1] New Race/Ethnicity categories came into effect in AY09-10 (as listed on page 13, top left). Until at least two years' data is collected, we can not calculate the percent change for the new non-Hispanic categories for: Asian, Hawaiian/Pacific Islander and Multiple-Races.

DEGREES AWARDED BY ETHNICITY^[1] AND CITIZENSHIP, 2005-06 TO 2009-10

Bachelor's	2005-06		2006-07		2007-08		2008-09		2009-10		Pct. Change 05/06 to 09/10	Pct. Change 08/09 to 09/10
	No.	Pct.	No.	Pct.	No.	Pct.	No.	Pct.	No.	Pct.		
Hispanic/Latino, Any Race	79	7.2%	88	7.3%	82	6.6%	94	8.2%	101	8.0%	27.8%	7.4%
Am. Indian/Nat. Alaskan, non-Hispanic	4	0.4%	6	0.5%	0	0.0%	3	0.3%	1	0.1%	-75.0%	-66.7%
Asian, non-Hispanic ^[1]	43	3.9%	55	4.6%	50	4.1%	50	4.4%	45	3.6%	N/A	N/A
Hawaiian/Pac. Islander, non-Hispanic ^[1]	--	0.0%	--	0.0%	--	0.0%	--	0.0%	3	0.2%	N/A	N/A
Black, non-Hispanic	71	6.4%	73	6.0%	59	4.8%	48	4.2%	51	4.1%	-28.2%	6.3%
White, non-Hispanic	863	78.2%	950	78.7%	1,010	81.8%	916	80.2%	993	78.9%	15.1%	8.4%
Multiple Races, non-Hispanic ^[1]	--	0.0%	--	0.0%	--	0.0%	--	0.0%	24	1.9%	N/A	N/A
Nonresident Alien	43	3.9%	35	2.9%	33	2.7%	31	2.7%	35	2.8%	-18.6%	12.9%
Missing	0	0.0%	0	0.0%	0	0.0%	0	0.0%	5	0.4%	N/A	N/A
Total	1,103		1,207		1,234		1,142		1,258		14.1%	10.2%

Graduate	2005-06		2006-07		2007-08		2008-09		2009-10		Pct. Change 05/06 to 09/10	Pct. Change 08/09 to 09/10
	No.	Pct.	No.	Pct.	No.	Pct.	No.	Pct.	No.	Pct.		
Hispanic/Latino, Any Race	5	3.7%	3	3.1%	1	0.9%	6	5.4%	2	2.2%	-60.0%	-66.7%
Am. Indian/Nat. Alaskan, non-Hispanic	1	0.7%	0	0.0%	0	0.0%	0	0.0%	0	0.0%	-100.0%	N/A
Asian, non-Hispanic ^[1]	0	0.0%	4	4.2%	3	2.6%	4	3.6%	1	1.1%	N/A	N/A
Hawaiian/Pac. Islander, non-Hispanic ^[1]	--	0.0%	--	0.0%	--	0.0%	--	0.0%	0	0.0%	N/A	N/A
Black, non-Hispanic	6	4.4%	3	3.1%	6	5.2%	3	2.7%	6	6.5%	0.0%	100.0%
White, non-Hispanic	122	89.7%	86	89.6%	105	90.5%	96	85.7%	81	87.1%	-33.6%	-15.6%
Multiple Races, non-Hispanic ^[1]	--	0.0%	--	0.0%	--	0.0%	--	0.0%	1	1.1%	N/A	N/A
Nonresident Alien	2	1.5%	0	0.0%	1	0.9%	3	2.7%	2	2.2%	0.0%	-33.3%
Missing	0	0.0%	0	0.0%	0	0.0%	0	0.0%	0	0.0%	N/A	N/A
Total	136		96		116		112		93		-31.6%	-17.0%

Total	2005-06		2006-07		2007-08		2008-09		2009-10		Pct. Change 05/06 to 09/10	Pct. Change 08/09 to 09/10
	No.	Pct.	No.	Pct.	No.	Pct.	No.	Pct.	No.	Pct.		
Hispanic/Latino, Any Race	84	6.8%	91	7.5%	83	6.7%	100	8.8%	103	8.2%	22.6%	N/A
Am. Indian/Native Alaskan, non-Hispanic	5	0.5%	6	0.5%	0	0.0%	3	0.3%	1	0.1%	-80.0%	-66.7%
Asian, non-Hispanic [1]	43	3.9%	59	4.9%	53	4.3%	54	4.7%	46	3.7%	N/A	N/A
Hawaiian/Pacific Islander, non-Hispanic [1]	0	0.0%	0	0.0%	0	0.0%	0	0.0%	3	0.2%	N/A	N/A
Black, non-Hispanic	77	7.0%	76	6.3%	65	5.3%	51	4.5%	57	4.5%	-26.0%	11.8%
White, non-Hispanic	985	89.3%	1,036	85.8%	1,115	90.4%	1,012	88.6%	1,074	85.4%	9.0%	6.1%
Multiple Races, non-Hispanic [1]	0	0.0%	0	0.0%	0	0.0%	0	0.0%	25	2.0%	NA	N/A
Nonresident Alien	45	4.1%	35	2.9%	34	2.8%	34	3.0%	37	2.9%	-17.8%	8.8%
Missing	0	0.0%	0	0.0%	0	0.0%	0	0.0%	5	0.4%	NA	N/A
Total	1,239		1,303		1,350		1,254		1,351		9.0%	7.7%



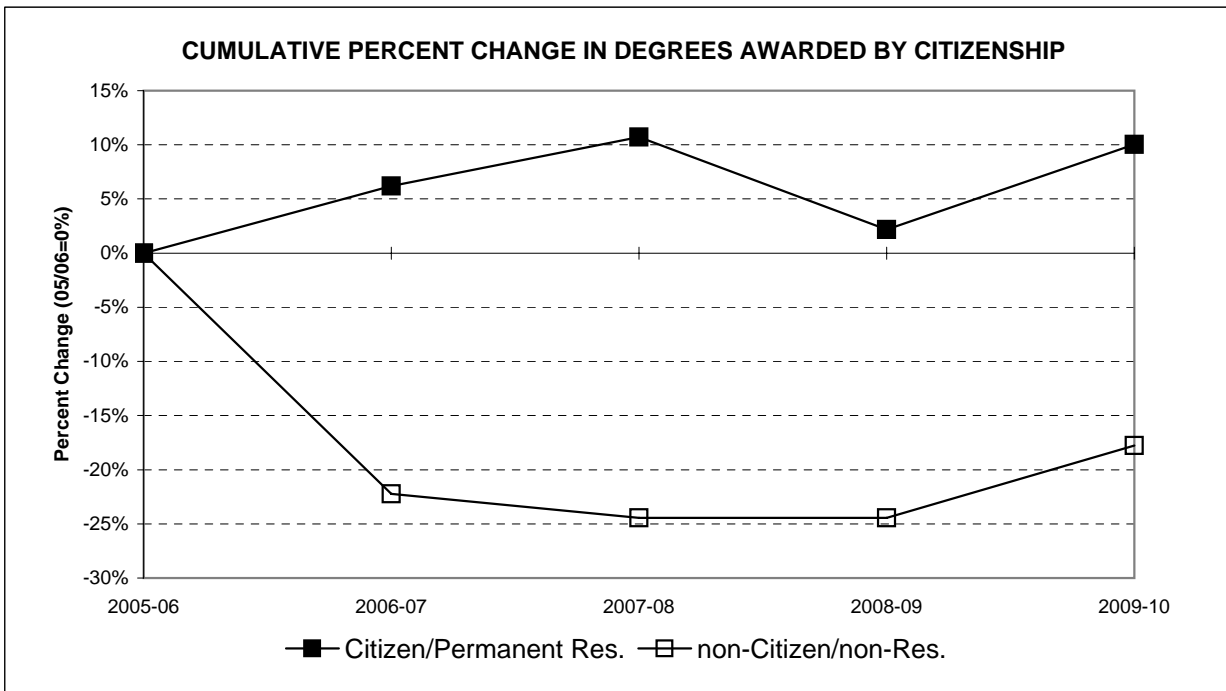
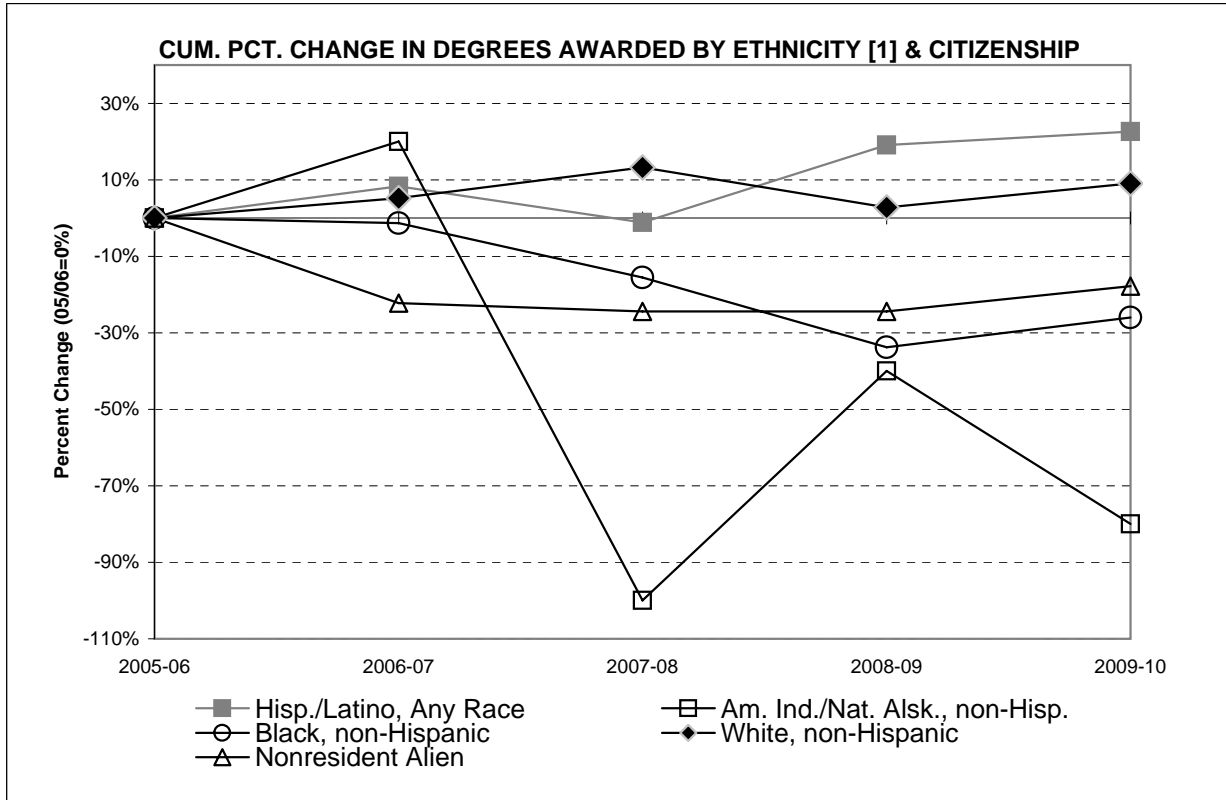
DEGREES AWARDED BY CITIZENSHIP, 2005-06 TO 2009-10

Bachelor's	2005-06		2006-07		2007-08		2008-09		2009-10		Pct. Change 05/06 to 09/10	Pct. Change 08/09 to 09/10
	No.	Pct.	No.	Pct.	No.	Pct.	No.	Pct.	No.	Pct.		
Citizen/Permanent Res.	1,060	96.1%	1,172	97.1%	1,207	97.3%	1,111	97.3%	1,223	97.2%	15.4%	10.1%
non-Citizen/non-Res.	43	3.9%	35	2.9%	33	2.7%	31	2.7%	35	2.8%	-18.6%	12.9%
Total	1,103		1,207		1,240		1,142		1,258		14.1%	10.2%

Graduate	2005-06		2006-07		2007-08		2008-09		2009-10		Pct. Change 05/06 to 09/10	Pct. Change 08/09 to 09/10
	No.	Pct.	No.	Pct.	No.	Pct.	No.	Pct.	No.	Pct.		
Citizen/Permanent Res.	134	98.5%	96	100.0%	115	99.1%	109	97.3%	91	97.8%	-32.1%	-16.5%
non-Citizen/non-Res.	2	1.5%	0	0.0%	1	0.9%	3	2.7%	2	2.2%	0.0%	-33.3%
Total	136		96		116		112		93		-31.6%	-17.0%

Total	2005-06		2006-07		2007-08		2008-09		2009-10		Pct. Change 05/06 to 09/10	Pct. Change 08/09 to 09/10
	No.	Pct.	No.	Pct.	No.	Pct.	No.	Pct.	No.	Pct.		
Citizen/Permanent Res.	1,194	96.4%	1,268	97.3%	1,322	97.5%	1,220	97.3%	1,314	97.3%	10.1%	7.7%
non-Citizen/non-Res.	45	3.6%	35	2.7%	34	2.5%	34	2.7%	37	2.7%	-17.8%	8.8%
Total	1,239		1,303		1,356		1,254		1,351		9.0%	7.7%

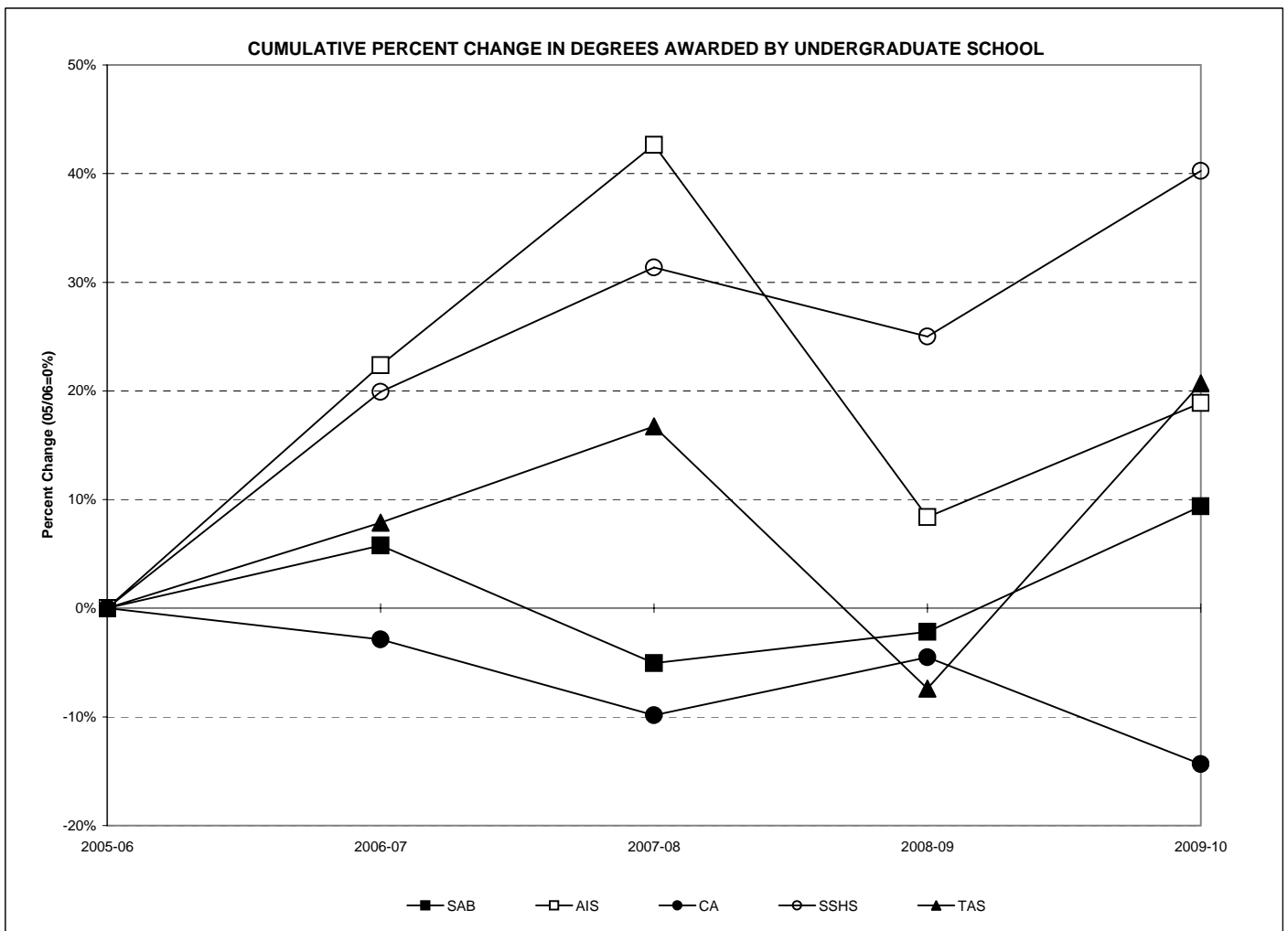
[1] New Race/Ethnicity categories came into effect in AY09-10 (as listed in headings on top, left). Until at least two years' data is collected, we can not calculate the percent change for the new non-Hispanic categories for: Asian, Hawaiian/Pacific Islander and Multiple-Races. Prior to 2009-10, the counts above for "Asian, non-Hispanic" were formerly grouped together as "Asian or Pacific Islander."



[1] New Race/Ethnicity categories came into effect in AY09-10 (as listed on page 15, top left). Until at least two years' data is collected, we can not calculate the percent change for the new non-Hispanic categories for: Asian, Hawaiian/Pacific Islander and Multiple-Races.

DEGREES AWARDED BY UNDERGRADUATE SCHOOL AND COMBINED GRADUATE PROGRAMS, 2005-06 TO 2009-10

Schools	2005-06		2006-07		2007-08		2008-09		2009-10		Percent Change 05/06 to 09/10	Percent Change 08/09 to 09/10
	No.	Pct.	No.	Pct.	No.	Pct.	No.	Pct.	No.	Pct.		
Anisfield School of Business	277	22.4%	293	22.5%	263	19.5%	271	21.6%	303	22.4%	9.4%	11.8%
American & Int'l. Studies	143	11.5%	175	13.4%	204	15.1%	155	12.4%	170	12.6%	18.9%	9.7%
Contemporary Arts	244	19.7%	237	18.2%	220	16.3%	233	18.6%	209	15.5%	-14.3%	-10.3%
Soc. Science & Human Services	236	19.0%	283	21.7%	310	23.0%	295	23.5%	331	24.5%	40.3%	12.2%
Theoretical & Applied Science	203	16.4%	219	16.8%	237	17.6%	188	15.0%	245	18.1%	20.7%	30.3%
Graduate Programs	136	11.0%	96	7.4%	116	8.6%	112	8.9%	93	6.9%	-31.6%	-17.0%
Total	1,239		1,303		1,350		1,254		1,351		9.0%	7.7%



DEGREES AWARDED BY SCHOOL AND MAJOR (WITH GRADUATE PROGRAMS), 2005-05 TO 2009-10

Majors/Programs	2005-06		2006-07		2007-08		2008-09		2009-10		Percent Chg. 05/06 to 09/10	Percent Chg. 08/09 to 09/10
	No.	Pct.	No.	Pct.	No.	Pct.	No.	Pct.	No.	Pct.		
Accounting	73	5.9%	74	5.7%	53	3.9%	59	4.7%	73	5.4%	0.0%	23.7%
Business Administration	141	11.4%	165	12.7%	152	11.3%	166	13.2%	192	14.2%	36.2%	15.7%
Economics [1]	8	0.6%	20	1.5%	12	0.9%	11	0.9%	13	1.0%	62.5%	18.2%
Information Systems	38	3.1%	17	1.3%	29	2.1%	19	1.5%	11	0.8%	-71.1%	-42.1%
International Business	17	1.4%	17	1.3%	17	1.3%	16	1.3%	14	1.0%	-17.6%	-12.5%
Sub-Total: ASB	277	22.4%	293	22.5%	263	19.5%	271	21.6%	303	22.4%	9.4%	11.8%
American Studies	5	0.4%	11	0.8%	6	0.4%	7	0.6%	10	0.7%	100.0%	42.9%
History [5]	36	2.9%	52	4.0%	64	4.7%	63	5.0%	63	4.7%	75.0%	0.0%
International Studies	12	1.0%	12	0.9%	22	1.6%	11	0.9%	18	1.3%	50.0%	63.6%
Liberal Studies	--	0.0%	--	0.0%	--	0.0%	--	0.0%	1	0.1%	N/A	N/A
Law and Society [6]	9	0.7%	2	0.2%	1	0.1%	0	0.0%	0	0.0%	-100.0%	N/A
Literature	49	4.0%	68	5.2%	82	6.1%	51	4.1%	50	3.7%	2.0%	-2.0%
Political Science [7]	27	2.2%	25	1.9%	26	1.9%	17	1.4%	22	1.6%	-18.5%	29.4%
Spanish Language Studies	5	0.4%	5	0.4%	3	0.2%	6	0.5%	6	0.4%	20.0%	0.0%
Sub-Total: AIS	143	11.5%	175	13.4%	204	15.1%	155	12.4%	170	12.6%	18.9%	9.7%
Communication Arts	171	13.8%	139	10.7%	133	9.9%	125	10.0%	123	9.1%	-28.1%	-1.6%
Contemporary Arts	21	1.7%	35	2.7%	31	2.3%	32	2.6%	31	2.3%	47.6%	-3.1%
Fine Arts [4]	1	0.1%	--	0.0%	--	0.0%	--	0.0%	--	0.0%	N/A	N/A
Music	10	0.8%	20	1.5%	18	1.3%	18	1.4%	22	1.6%	120.0%	22.2%
Theater	15	1.2%	8	0.6%	15	1.1%	16	1.3%	4	0.3%	-73.3%	-75.0%
Visual Arts	26	2.1%	35	2.7%	23	1.7%	42	3.3%	29	2.1%	11.5%	-31.0%
Sub-Total: CA	244	19.7%	237	18.2%	220	16.3%	233	18.6%	209	15.5%	-14.3%	-10.3%
Economics [1]	2	0.2%	--	0.0%	--	0.0%	--	0.0%	--	0.0%	N/A	N/A
Environmental Studies [3]	0	0.0%	16	1.2%	11	0.8%	11	0.9%	14	1.0%	N/A	27.3%
History [5]	1	0.1%	--	0.0%	--	0.0%	--	0.0%	--	0.0%	N/A	N/A
Law and Society [6]	41	3.3%	53	4.1%	68	5.0%	53	4.2%	49	3.6%	19.5%	-7.5%
Psychology [8]	126	10.2%	159	12.2%	167	12.4%	164	13.1%	200	14.8%	58.7%	22.0%
Social Science	12	1.0%	14	1.1%	15	1.1%	13	1.0%	26	1.9%	116.7%	100.0%
Social Work	30	2.4%	24	1.8%	29	2.1%	37	3.0%	23	1.7%	-23.3%	-37.8%
Sociology	24	1.9%	17	1.3%	20	1.5%	17	1.4%	19	1.4%	-20.8%	11.8%
Sub-Total: SSHS	236	19.0%	283	21.7%	310	23.0%	295	23.5%	331	24.5%	40.3%	12.2%
Allied Health	--	0.0%	--	0.0%	1	0.1%	1	0.1%	1	0.1%	N/A	0.0%
Biochemistry	3	0.2%	6	0.5%	9	0.7%	8	0.6%	9	0.7%	200.0%	12.5%
Bioinformatics	1	0.1%	4	0.3%	6	0.4%	0	0.0%	2	0.1%	100.0%	N/A
Biology	40	3.2%	60	4.6%	66	4.9%	52	4.1%	92	6.8%	130.0%	76.9%
Chemistry	2	0.2%	5	0.4%	3	0.2%	1	0.1%	7	0.5%	250.0%	600.0%
Clinical Lab Science	0	0.0%	0	0.0%	0	0.0%	0	0.0%	1	0.1%	N/A	N/A
Computer Science	17	1.4%	18	1.4%	14	1.0%	11	0.9%	7	0.5%	-58.8%	-36.4%
Engineering Physics [2]	--	0.0%	--	0.0%	--	0.0%	--	0.0%	1	0.1%	N/A	N/A
Environmental Science	5	0.4%	4	0.3%	6	0.4%	9	0.7%	8	0.6%	60.0%	-11.1%
Environmental Studies [3]	13	1.0%	1	0.1%	2	0.1%	--	0.0%	--	0.0%	-100.0%	N/A
Integrated Science Studies	0	0.0%	3	0.0%	3	0.0%	1	0.0%	1	0.0%	N/A	0.0%
Mathematics	10	0.8%	17	1.3%	22	1.6%	14	1.1%	15	1.1%	50.0%	7.1%
Nursing	65	5.2%	89	6.8%	101	7.5%	86	6.9%	97	7.2%	49.2%	12.8%
Physics	6	0.5%	4	0.3%	4	0.3%	3	0.2%	4	0.3%	-33.3%	33.3%
Psychology [8]	41	3.3%	8	0.6%	--	0.0%	2	0.2%	--	0.0%	-100.0%	N/A
Sub-Total: TAS	203	16.4%	219	16.8%	237	17.6%	188	15.0%	245	18.1%	20.7%	30.3%
M.A. in Liberal Studies	11	0.9%	10	0.8%	4	0.3%	8	0.6%	7	0.5%	-36.4%	-12.5%
M. in Business Admin.	14	1.1%	10	0.8%	6	0.4%	7	0.6%	4	0.3%	-71.4%	-42.9%
M.S. in Educational Tech.	101	8.2%	66	5.1%	84	6.2%	81	6.5%	69	5.1%	-31.7%	-14.8%
M.S. in Nursing	10	0.8%	10	0.8%	22	1.6%	16	1.3%	13	1.0%	30.0%	-18.8%
Sub-Total: Graduate	136	11.0%	96	7.4%	116	8.6%	112	8.9%	93	6.9%	-31.6%	-17.0%
Total	1,239		1,303		1,350		1,254		1,351		9.0%	7.7%

[1] Economics is no longer offered in SSHS.

[2] Engineering Physics was first offered in Fall 2008 and will phase out the Physics major.

[3] Environmental Studies is no longer offered in TAS.

[4] Fine Arts is no longer offered as a major.

[5] History is no longer offered in SSHS.

[6] Law and Society is no longer offered in AIS.

[7] Political Science is no longer offered in SSHS.

[8] Psychology is no longer offered in TAS.

DEGREES AWARDED BY MAJOR (WITH GRADUATE PROGRAMS), 2005-06 TO 2009-10

Major/Program	2005-06		2006-07		2007-08		2008-09		2009-10		Percent	Percent
	No.	Pct.	No.	Pct.	No.	Pct.	No.	Pct.	No.	Pct.	Chg. 05/06 to 09/10	Chg. 08/09 to 09/10
Accounting	73	5.9%	74	5.7%	53	3.9%	59	4.7%	73	5.4%	0.0%	23.7%
Allied health	--	--	--	--	1	0.1%	1	0.1%	1	0.1%	N/A	0.0%
American Studies	5	0.4%	11	0.8%	6	0.4%	7	0.6%	10	0.7%	100.0%	42.9%
Biochemistry	3	0.2%	6	0.5%	9	0.7%	8	0.6%	9	0.7%	200.0%	12.5%
Bioinformatics	1	0.1%	4	0.3%	6	0.4%	0	0.0%	2	0.1%	100.0%	N/A
Biology	40	3.2%	60	4.6%	66	4.9%	52	4.1%	92	6.8%	130.0%	76.9%
Business Administration	141	11.4%	165	12.7%	152	11.3%	166	13.2%	192	14.2%	36.2%	15.7%
Chemistry	2	0.2%	5	0.4%	3	0.2%	1	0.1%	7	0.5%	250.0%	600.0%
Clinical Lab Science	--	--	--	--	--	--	--	--	1	0.1%	N/A	N/A
Communication Arts	171	13.8%	139	10.7%	133	9.9%	125	10.0%	123	9.1%	-28.1%	-1.6%
Computer Science	17	1.4%	18	1.4%	14	1.0%	11	0.9%	7	0.5%	-58.8%	-36.4%
Contemporary Arts	21	1.7%	35	2.7%	31	2.3%	32	2.6%	31	2.3%	47.6%	-3.1%
Economics ^[1]	10	0.8%	20	1.5%	12	0.9%	11	0.9%	13	1.0%	30.0%	18.2%
Engineering Physics ^[2]	--	--	--	--	--	--	--	--	1	0.1%	N/A	N/A
Environmental Science	5	0.4%	4	0.3%	6	0.4%	9	0.7%	8	0.6%	60.0%	-11.1%
Environmental Studies ^[3]	13	1.0%	17	1.3%	13	1.0%	11	0.9%	14	1.0%	7.7%	27.3%
Fine Arts ^[4]	1	0.1%	--	0.0%	--	0.0%	--	0.0%	--	0.0%	-100.0%	N/A
History ^[5]	37	3.0%	52	4.0%	64	4.7%	63	5.0%	63	4.7%	70.3%	0.0%
Information Systems	38	3.1%	17	1.3%	29	2.1%	19	1.5%	11	0.8%	-71.1%	-42.1%
Integrated Science	0	0.0%	3	0.2%	3	0.2%	1	0.1%	1	0.1%	N/A	0.0%
International Business	17	1.4%	17	1.3%	17	1.3%	16	1.3%	14	1.0%	-17.6%	-12.5%
International Studies	12	1.0%	12	0.9%	22	1.6%	11	0.9%	18	1.3%	50.0%	63.6%
Law and Society ^[6]	50	4.0%	55	4.2%	69	5.1%	53	4.2%	49	3.6%	-2.0%	-7.5%
Liberal Studies	--	--	--	--	--	--	--	--	1	0.1%	N/A	N/A
Literature	49	4.0%	68	5.2%	82	6.1%	51	4.1%	50	3.7%	2.0%	-2.0%
M. in Business Admin.	14	1.1%	10	0.8%	6	0.4%	7	0.6%	4	0.3%	-71.4%	-42.9%
M.A. in Liberal Studies	11	0.9%	10	0.8%	4	0.3%	8	0.6%	7	0.5%	-36.4%	-12.5%
M.S. in Ed. Technology	101	8.2%	66	5.1%	84	6.2%	81	6.5%	69	5.1%	-31.7%	-14.8%
M.S. in Nursing	10	0.8%	10	0.8%	22	1.6%	16	1.3%	13	1.0%	30.0%	-18.8%
Mathematics	10	0.8%	17	1.3%	22	1.6%	14	1.1%	15	1.1%	50.0%	7.1%
Music	10	0.8%	20	1.5%	18	1.3%	18	1.4%	22	1.6%	120.0%	22.2%
Nursing	65	5.2%	89	6.8%	101	7.5%	86	6.9%	97	7.2%	49.2%	12.8%
Physics	6	0.5%	4	0.3%	4	0.3%	3	0.2%	4	0.3%	-33.3%	33.3%
Political Science ^[7]	27	2.2%	25	1.9%	26	1.9%	17	1.4%	22	1.6%	-18.5%	29.4%
Psychology ^[8]	167	13.5%	167	12.8%	167	12.4%	166	13.2%	200	14.8%	19.8%	20.5%
Social Science	12	1.0%	14	1.1%	15	1.1%	13	1.0%	26	1.9%	116.7%	100.0%
Social Work	30	2.4%	24	1.8%	29	2.1%	37	3.0%	23	1.7%	-23.3%	-37.8%
Sociology	24	1.9%	17	1.3%	20	1.5%	17	1.4%	19	1.4%	-20.8%	11.8%
Spanish Language Studies	5	0.4%	5	0.4%	3	0.2%	6	0.5%	6	0.4%	20.0%	0.0%
Theater	15	1.2%	8	0.6%	15	1.1%	16	1.3%	4	0.3%	-73.3%	-75.0%
Visual Arts	26	2.1%	35	2.7%	23	1.7%	42	3.3%	29	2.1%	11.5%	-31.0%
Total	1,239		1,303		1,350		1,254		1,351		9.0%	7.7%

[1] Economics is no longer offered in SSHS.

[2] Engineering Physics was first offered in Fall 2008 and will phase out the Physics major.

[3] Environmental Studies is no longer offered in TAS.

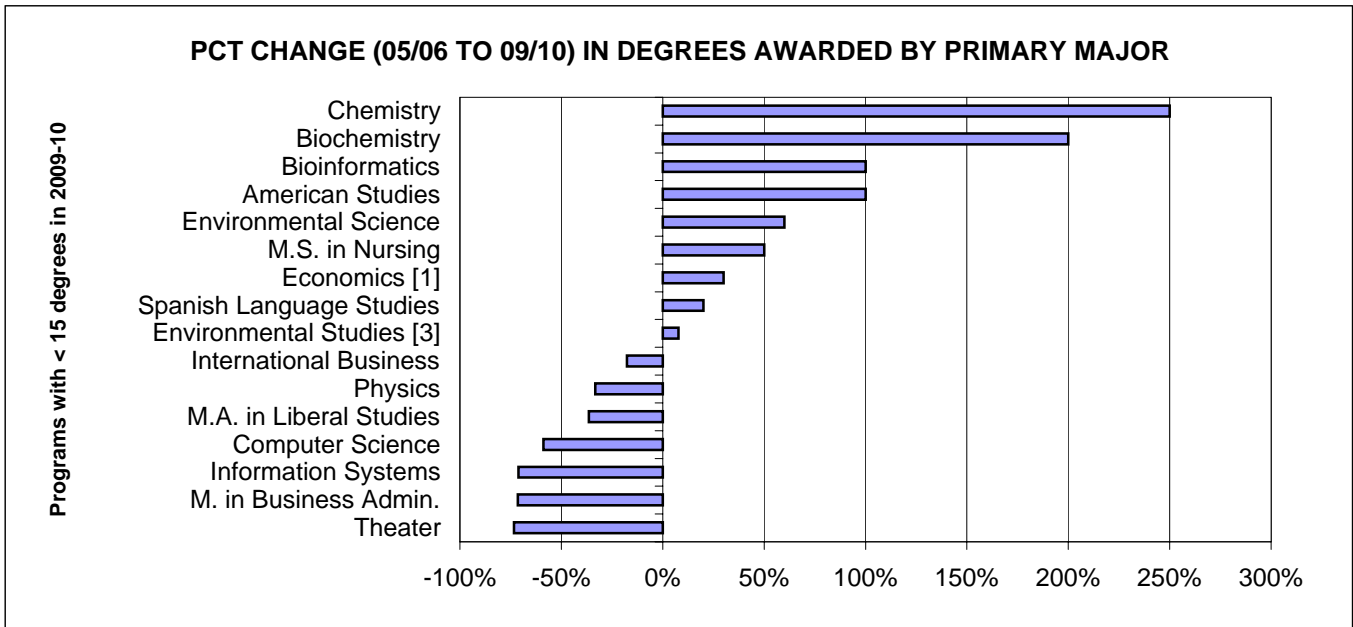
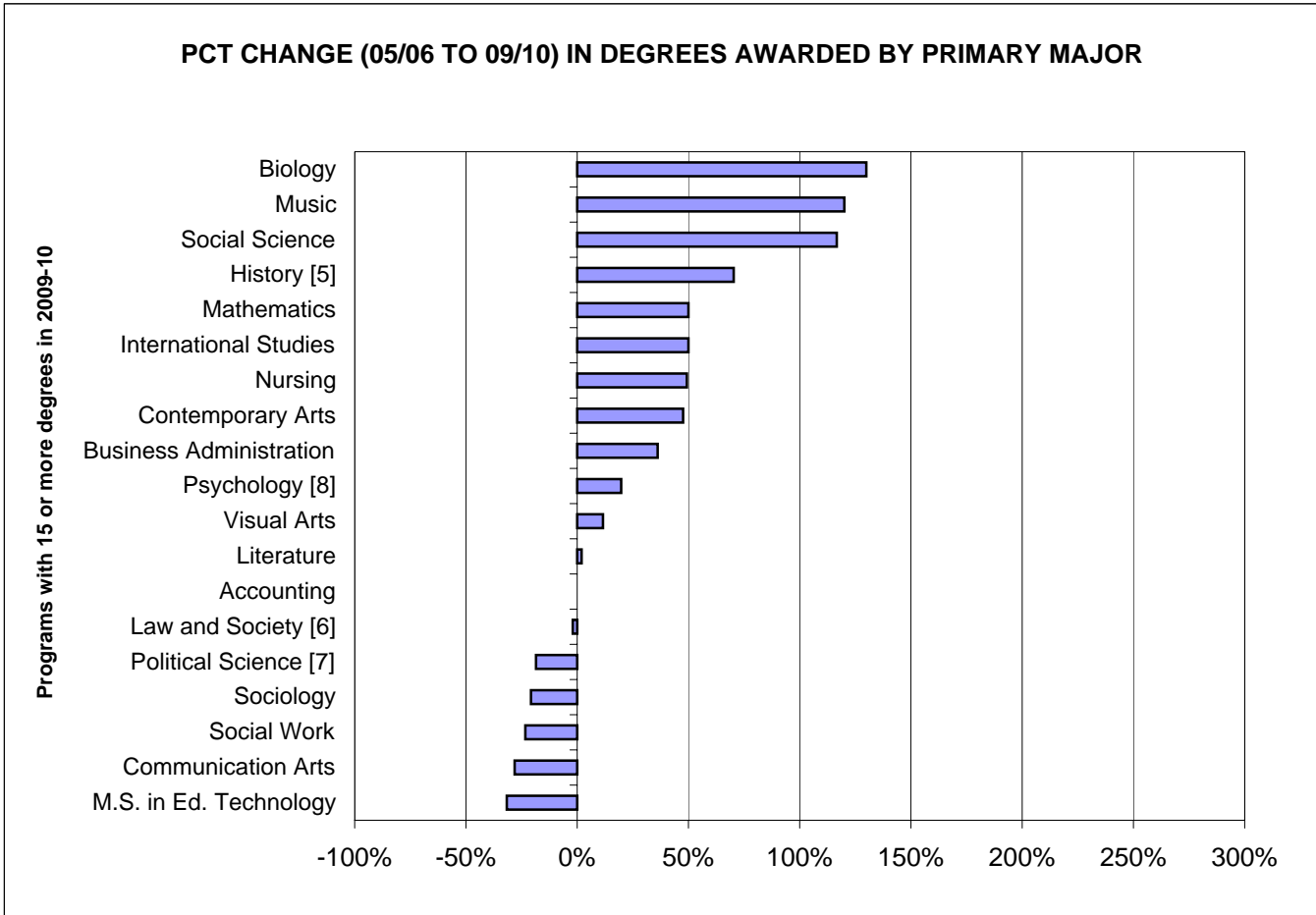
[4] Fine Arts is no longer offered as a major.

[5] History is no longer offered in SSHS.

[6] Law and Society is no longer offered in AIS.

[7] Political Science is no longer offered in SSHS.

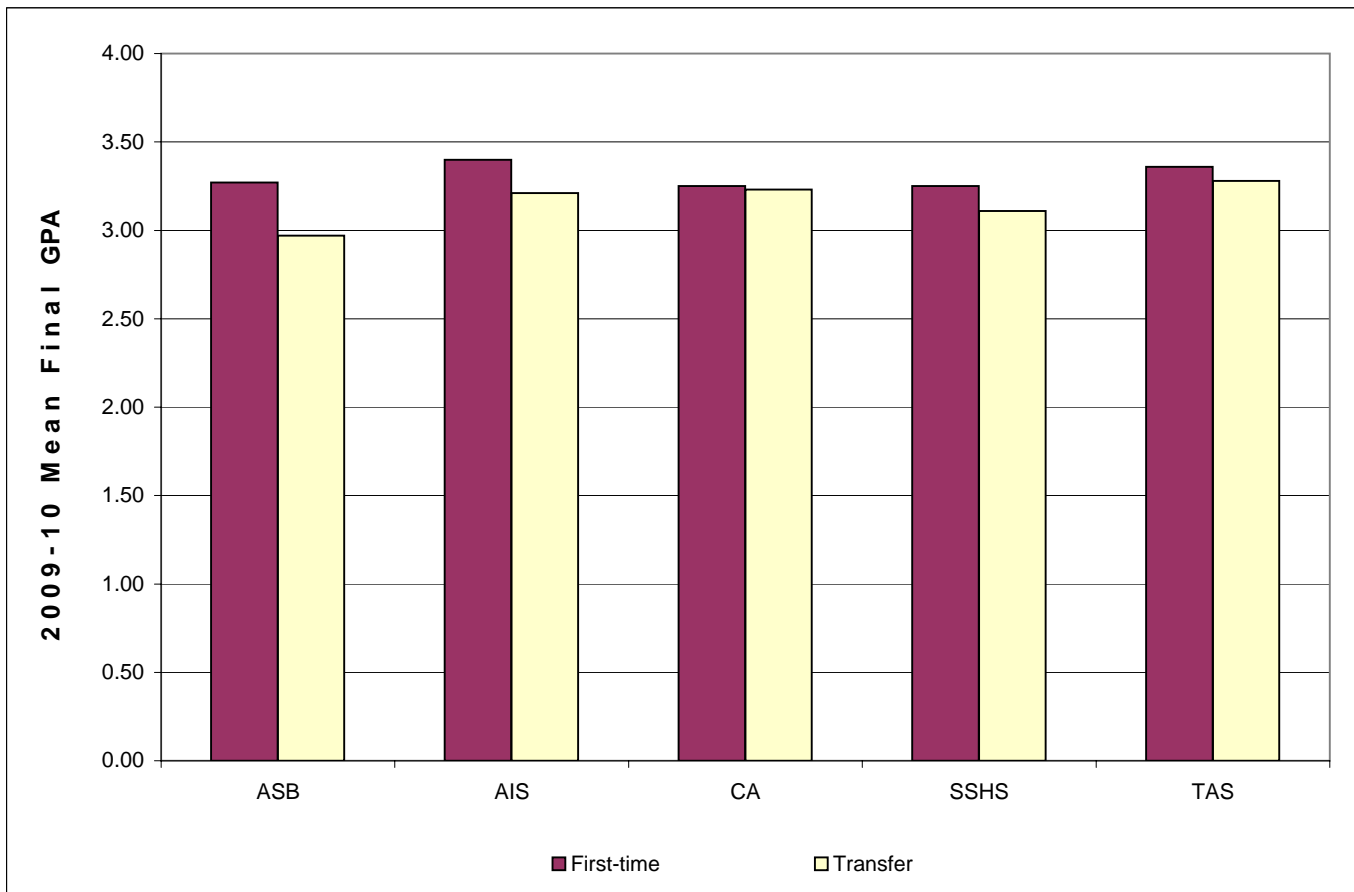
[8] Psychology is no longer offered in TAS.



(please see footnotes are on page 19)

**MEAN FINAL GRADE POINT AVERAGES BY SCHOOL AND INITIAL ADMISSIONS TYPE
2009-10 DEGREE RECIPIENTS, UNDERGRADUATE ONLY**

School	Mean Final Grade Point Average of First-time Students		Mean Final Grade Point Average of Transfer Students	
	Number	Mean GPA	Number	Mean GPA
Anisfield School of Business	142	3.27	161	2.97
American & Int'l. Studies	97	3.40	73	3.21
Contemporary Arts	91	3.25	118	3.23
Social Science & Human Services	150	3.25	181	3.11
Theoretical & Applied Science	139	3.36	106	3.28
Overall	619	3.30	639	3.14



NEW UNDERGRADUATE STUDENT COHORT RETENTION RATES

Fall of Entry	Sub-Cohorts*	Original Size	Retained One-Year		Retained Two-Years		Retained Three-Years		Retained Four-Years		Retained Five-Years		Retained Six-Years	
			#	Rate	#	Rate	#	Rate	#	Rate	#	Rate	#	Rate
1999	FTFTF	528	435	82.4%	378	71.6%	348	65.9%	146	27.7%	42	8.0%	18	3.4%
	PTFTF	8	4	50.0%	3	37.5%	2	25.0%	0	0.0%	0	0.0%	0	0.0%
	FTTR	364	274	75.3%	169	46.4%	88	24.2%	37	10.2%	15	4.1%	8	2.2%
	PTTR	152	93	61.2%	74	48.7%	53	34.9%	37	24.3%	27	17.8%	10	6.6%
	Total	1,052	806	76.6%	624	59.3%	491	46.7%	220	20.9%	84	8.0%	36	3.4%
2000	FTFTF	638	542	85.0%	490	76.8%	459	71.9%	187	29.3%	31	4.9%	15	2.4%
	PTFTF	6	4	66.7%	4	66.7%	4	66.7%	4	66.7%	2	33.3%	2	33.3%
	FTTR	369	276	74.8%	184	49.9%	75	20.3%	27	7.3%	8	2.2%	9	2.4%
	PTTR	150	84	56.0%	65	43.3%	44	29.3%	29	19.3%	19	12.7%	14	9.3%
	Total	1,163	906	77.9%	743	63.9%	582	50.0%	247	21.2%	60	5.2%	40	3.4%
2001	FTFTF	628	525	83.6%	468	74.5%	446	71.0%	140	22.3%	20	3.2%	7	1.1%
	PTFTF	5	2	40.0%	2	40.0%	2	40.0%	2	40.0%	1	20.0%	0	0.0%
	FTTR	364	291	79.9%	190	52.2%	70	19.2%	26	7.1%	15	4.1%	9	2.5%
	PTTR	141	92	65.2%	73	51.8%	42	29.8%	30	21.3%	14	9.9%	10	7.1%
	Total	1,138	910	80.0%	733	64.4%	560	49.2%	198	17.4%	50	4.4%	26	2.3%
2002	FTFTF	684	595	87.0%	536	78.4%	512	74.9%	146	21.3%	34	5.0%	12	1.8%
	PTFTF	3	1	33.3%	1	33.3%	1	33.3%	1	33.3%	1	33.3%	0	0.0%
	FTTR	433	338	78.1%	221	51.0%	85	19.6%	23	5.3%	0	0.0%	5	1.2%
	PTTR	135	85	63.0%	59	43.7%	36	26.7%	21	15.6%	10	7.4%	0	0.0%
	Total	1,255	1,019	81.2%	817	65.1%	634	50.5%	191	15.2%	45	3.6%	17	1.4%
2003	FTFTF	725	646	89.1%	578	79.7%	562	77.5%	128	17.7%	28	3.9%	16	2.2%
	PTFTF	0	-	N/A	-	N/A	-	N/A	-	N/A	-	N/A	-	N/A
	FTTR	378	315	83.3%	209	55.3%	85	22.5%	20	5.3%	13	3.4%	5	1.3%
	PTTR	120	63	52.5%	45	37.5%	21	17.5%	14	11.7%	8	6.7%	5	4.2%
	Total	1,223	1,024	83.7%	832	68.0%	668	54.6%	162	13.2%	49	4.0%	26	2.1%
2004	FTFTF	755	674	89.3%	616	81.6%	579	76.7%	128	17.0%	26	3.4%	18	2.4%
	PTFTF	0	-	N/A	-	N/A	-	N/A	-	N/A	-	N/A	-	N/A
	FTTR	398	346	86.9%	213	53.5%	80	20.1%	24	6.0%	11	2.8%	9	2.3%
	PTTR	93	63	67.7%	39	41.9%	23	24.7%	16	17.2%	7	7.5%	6	6.5%
	Total	1,246	1,083	86.9%	868	69.7%	682	54.7%	168	13.5%	44	3.5%	33	2.6%
2005	FTFTF	748	655	87.6%	591	79.0%	559	74.7%	136	18.2%	34	4.5%	-	-
	PTFTF	0	-	N/A	-	N/A	-	N/A	-	N/A	-	N/A	-	-
	FTTR	396	316	79.8%	197	49.7%	64	16.2%	19	4.8%	3	0.8%	-	-
	PTTR	76	44	57.9%	37	48.7%	19	25.0%	10	13.2%	3	3.9%	-	-
	Total	1,220	1,015	83.2%	825	67.6%	642	52.6%	165	13.5%	40	3.3%	-	-
2006	FTFTF	813	731	89.9%	669	82.3%	618	76.0%	159	19.6%	-	-	-	-
	PTFTF	1	1	100.0%	1	100.0%	1	100.0%	1	100.0%	-	-	-	-
	FTTR	540	454	84.1%	271	50.2%	93	17.2%	24	4.4%	-	-	-	-
	PTTR	70	41	58.6%	35	50.0%	19	27.1%	10	14.3%	-	-	-	-
	Total	1,424	1,227	86.2%	976	68.5%	731	51.3%	194	13.6%	-	-	-	-
2007	FTFTF	900	791	87.9%	728	80.9%	676	75.1%	-	-	-	-	-	-
	PTFTF	2	0	0.0%	0	0.0%	0	0.0%	-	-	-	-	-	-
	FTTR	549	468	85.2%	299	54.5%	106	19.3%	-	-	-	-	-	-
	PTTR	67	42	62.7%	32	47.8%	19	28.4%	-	-	-	-	-	-
	Total	1,518	1,301	85.7%	1,059	69.8%	801	52.8%	-	-	-	-	-	-
2008	FTFTF	879	764	86.9%	703	80.0%	-	-	-	-	-	-	-	-
	PTFTF	1	0	0.0%	1	100.0%	-	-	-	-	-	-	-	-
	FTTR	564	464	82.3%	308	54.6%	-	-	-	-	-	-	-	-
	PTTR	57	37	64.9%	24	42.1%	-	-	-	-	-	-	-	-
	Total	1,501	1,265	84.3%	1,036	69.0%	-	-	-	-	-	-	-	-
2009	FTFTF	934	824	88.2%	-	-	-	-	-	-	-	-	-	-
	PTFTF	3	2	66.7%	-	-	-	-	-	-	-	-	-	-
	FTTR	557	466	83.7%	-	-	-	-	-	-	-	-	-	-
	PTTR	51	32	62.7%	-	-	-	-	-	-	-	-	-	-
	Total	1,545	1,324	85.7%	-	-	-	-	-	-	-	-	-	-

* FTFTF=full-time, first-time freshmen; PTFTF=part-time, first-time freshmen; FTTR=full-time transfers; and PTTR=part-time transfers.

SIX-YEAR RETENTION BY ETHNICITY, FULL-TIME FIRST-TIME FRESHMEN

Fall of Entry	Sub-Cohorts	Original Size	Retained One-Year		Retained Two-Years		Retained Three-Years		Retained Four-Years		Retained Five-Years		Retained Six-Years	
			#	Rate	#	Rate	#	Rate	#	Rate	#	Rate	#	Rate
1999	Amer. I/Nat.Al.	0	0	0.0%	0	0.0%	0	0.0%	0	0.0%	0	0.0%	0	0.0%
	Asian/Pac Is.	26	23	88.5%	22	84.6%	19	73.1%	9	34.6%	2	7.7%	1	3.8%
	Black, Non-Hisp.	56	47	83.9%	40	71.4%	37	66.1%	14	25.0%	5	8.9%	3	5.4%
	Hispanic	50	42	84.0%	32	64.0%	30	60.0%	17	34.0%	4	8.0%	0	0.0%
	White, non Hisp.	396	323	81.6%	284	71.7%	262	66.2%	106	26.8%	31	7.8%	14	3.5%
	Total	528	435	82.4%	378	71.6%	348	65.9%	146	27.7%	42	8.0%	18	3.4%
2000	Amer. I/Nat.Al.	2	2	100.0%	2	100.0%	2	100.0%	6	0.0%	1	0.0%	0	0.0%
	Asian/Pac Is.	31	25	80.6%	23	74.2%	17	54.8%	14	45.2%	5	16.1%	2	6.5%
	Black, Non-Hisp.	49	41	83.7%	38	77.6%	31	63.3%	2	4.1%	2	4.1%	1	2.0%
	Hispanic	53	45	84.9%	40	75.5%	34	64.2%	20	37.7%	4	7.5%	2	3.8%
	White, non Hisp.	503	429	85.3%	387	76.9%	375	74.6%	145	28.8%	19	3.8%	10	2.0%
	Total	638	542	85.0%	490	76.8%	459	71.9%	187	29.3%	31	4.9%	15	2.4%
2001	Amer. I/Nat.Al.	0	0	0.0%	0	0.0%	0	0.0%	0	0.0%	0	0.0%	0	0.0%
	Asian/Pac Is.	35	32	91.4%	27	77.1%	23	65.7%	4	11.4%	2	5.7%	0	0.0%
	Black, Non-Hisp.	44	35	79.5%	31	70.5%	32	72.7%	12	27.3%	2	4.5%	2	4.5%
	Hispanic	58	51	87.9%	46	79.3%	42	72.4%	17	29.3%	2	3.4%	0	0.0%
	White, non Hisp.	491	407	82.9%	364	74.1%	349	71.1%	107	21.8%	14	2.9%	5	1.0%
	Total	628	525	83.6%	468	74.5%	446	71.0%	140	22.3%	20	3.2%	7	1.1%
2002	Amer. I/Nat.Al.	3	3	100.0%	1	0.0%	1	0.0%	0	0.0%	0	0.0%	0	0.0%
	Asian/Pac Is.	23	20	87.0%	17	73.9%	14	60.9%	3	13.0%	1	4.3%	0	0.0%
	Black, Non-Hisp.	58	51	87.9%	48	82.8%	47	81.0%	17	29.3%	7	12.1%	1	1.7%
	Hispanic	69	56	81.2%	47	68.1%	42	60.9%	15	21.7%	2	2.9%	1	1.4%
	White, non Hisp.	531	465	87.6%	423	79.7%	408	76.8%	111	20.9%	24	4.5%	10	1.9%
	Total	684	595	87.0%	536	78.4%	512	74.9%	146	21.3%	34	5.0%	12	1.8%
2003	Amer. I/Nat.Al.	3	3	100.0%	3	0.0%	3	0.0%	1	0.0%	0	0.0%	0	0.0%
	Asian/Pac Is.	25	24	96.0%	20	80.0%	19	76.0%	3	12.0%	0	0.0%	0	0.0%
	Black, Non-Hisp.	53	47	88.7%	42	79.2%	40	75.5%	10	18.9%	1	1.9%	2	3.8%
	Hispanic	58	50	86.2%	41	70.7%	40	69.0%	10	17.2%	1	1.7%	1	1.7%
	White, non Hisp.	586	522	89.1%	472	80.5%	460	78.5%	104	17.7%	26	4.4%	13	2.2%
	Total	725	646	89.1%	578	79.7%	562	77.5%	128	17.7%	28	3.9%	16	2.2%
2004	Amer. I/Nat.Al.	1	0	0.0%	0	0.0%	0	0.0%	0	0.0%	0	0.0%	0	0.0%
	Asian/Pac Is.	40	37	92.5%	28	70.0%	26	65.0%	4	10.0%	1	2.5%	2	5.0%
	Black, Non-Hisp.	48	42	87.5%	33	68.8%	31	64.6%	13	27.1%	4	8.3%	3	6.3%
	Hispanic	64	58	90.6%	51	79.7%	46	71.9%	15	23.4%	3	4.7%	2	3.1%
	White, non Hisp.	602	537	89.2%	504	83.7%	476	79.1%	96	15.9%	36	6.0%	11	1.8%
	Total	755	674	89.3%	616	81.6%	579	76.7%	128	17.0%	44	5.8%	18	2.4%
2005	Amer. I/Nat.Al.	2	2	100.0%	2	0.0%	2	0.0%	1	0.0%	0	0.0%	-	-
	Asian/Pac Is.	32	28	87.5%	25	78.1%	25	78.1%	6	18.8%	1	3.1%	-	-
	Black, Non-Hisp.	67	56	83.6%	45	67.2%	40	59.7%	12	17.9%	2	3.0%	-	-
	Hispanic	67	58	86.6%	49	73.1%	47	70.1%	20	29.9%	9	13.4%	-	-
	White, non Hisp.	580	511	88.1%	470	81.0%	445	76.7%	97	16.7%	22	3.8%	-	-
	Total	748	655	87.6%	591	79.0%	559	74.7%	136	18.2%	34	4.5%	-	-
2006	Amer. I/Nat.Al.	4	4	100.0%	3	0.0%	3	0.0%	0	0.0%	-	-	-	-
	Asian/Pac Is.	35	30	85.7%	28	80.0%	23	65.7%	4	11.4%	-	-	-	-
	Black, Non-Hisp.	71	59	83.1%	53	74.6%	44	62.0%	19	26.8%	-	-	-	-
	Hispanic	91	83	91.2%	69	75.8%	63	69.2%	26	28.6%	-	-	-	-
	White, non Hisp.	613	556	90.7%	517	84.3%	486	79.3%	110	17.9%	-	-	-	-
	Total	814	732	89.9%	670	82.3%	619	76.0%	159	19.5%	-	-	-	-
2007	Amer. I/Nat.Al.	2	2	100.0%	2	0.0%	2	0.0%	-	-	-	-	-	-
	Asian/Pac Is.	44	41	93.2%	40	90.9%	35	79.5%	-	-	-	-	-	-
	Black, Non-Hisp.	67	58	86.6%	50	74.6%	45	67.2%	-	-	-	-	-	-
	Hispanic	78	60	76.9%	55	70.5%	49	62.8%	-	-	-	-	-	-
	White, non Hisp.	709	630	88.9%	581	81.9%	545	76.9%	-	-	-	-	-	-
	Total	900	791	87.9%	728	80.9%	676	75.1%	-	-	-	-	-	-
2008	Amer. I/Nat.Al.	2	2	100.0%	2	100.0%	-	-	-	-	-	-	-	-
	Asian/Pac Is.	56	49	87.5%	46	82.1%	-	-	-	-	-	-	-	-
	Black, Non-Hisp.	55	47	85.5%	36	65.5%	-	-	-	-	-	-	-	-
	Hispanic	93	78	83.9%	69	74.2%	-	-	-	-	-	-	-	-
	White, non Hisp.	670	586	87.5%	549	81.9%	-	-	-	-	-	-	-	-
	missing	3	2	66.7%	2	66.7%	-	-	-	-	-	-	-	
	Total	879	764	86.9%	704	80.1%	-	-	-	-	-	-	-	
2009	Amer. I/Nat.Al.	5	5	100.0%	-	-	-	-	-	-	-	-	-	-
	Asian/Pac Is.	53	51	96.2%	-	-	-	-	-	-	-	-	-	-
	Black, Non-Hisp.	45	37	82.2%	-	-	-	-	-	-	-	-	-	-
	Hispanic	89	79	88.8%	-	-	-	-	-	-	-	-	-	-
	White, non Hisp.	699	616	88.1%	-	-	-	-	-	-	-	-	-	-
	missing	43	36	83.7%	-	-	-	-	-	-	-	-	-	
	Total	934	824	88.2%	-	-	-	-	-	-	-	-	-	

SIX-YEAR RETENTION BY ADMIT TYPE FOR FULL-TIME FIRST-TIME FRESHMEN

Fall of Entry	Sub-Cohorts	Original Size	Retained One-Year		Retained Two-Years		Retained Three-Years		Retained Four-Years		Retained Five-Years		Retained Six-Years	
			#	Rate	#	Rate	#	Rate	#	Rate	#	Rate	#	Rate
1998	Regular	352	295	83.8%	271	77.0%	246	69.9%	124	35.2%	35	9.9%	17	4.8%
	EOF	69	57	82.6%	46	66.7%	42	60.9%	23	33.3%	7	10.1%	1	1.4%
	Special	51	40	78.4%	36	70.6%	33	64.7%	20	39.2%	5	9.8%	4	7.8%
	Total	472	392	83.1%	353	74.8%	321	68.0%	167	35.4%	47	10.0%	22	4.7%
1999	Regular	414	330	79.7%	292	70.5%	270	65.2%	104	25.1%	30	7.2%	13	3.1%
	EOF	60	56	93.3%	44	73.3%	41	68.3%	21	35.0%	8	13.3%	4	6.7%
	Special	54	49	90.7%	42	77.8%	37	68.5%	21	38.9%	4	7.4%	1	1.9%
	Total	528	435	82.4%	378	71.6%	348	65.9%	146	27.7%	42	8.0%	18	3.4%
2000	Regular	511	439	85.9%	399	78.1%	380	74.4%	144	28.2%	21	4.1%	13	2.5%
	EOF	64	55	85.9%	50	78.1%	41	64.1%	23	35.9%	3	4.7%	2	3.1%
	Special	63	48	76.2%	41	65.1%	38	60.3%	20	31.7%	7	11.1%	0	0.0%
	Total	638	542	85.0%	490	76.8%	459	71.9%	187	29.3%	31	4.9%	15	2.4%
2001	Regular	497	414	83.3%	370	74.4%	353	71.0%	101	20.3%	16	3.2%	4	0.8%
	EOF	69	60	87.0%	54	78.3%	52	75.4%	24	34.8%	3	4.3%	3	4.3%
	Special	62	51	82.3%	44	71.0%	41	66.1%	15	24.2%	1	1.6%	0	0.0%
	Total	628	525	83.6%	468	74.5%	446	71.0%	140	22.3%	20	3.2%	7	1.1%
2002	Regular	543	485	89.3%	439	80.8%	423	77.9%	111	20.4%	23	4.2%	11	2.0%
	EOF	73	60	82.2%	51	69.9%	46	63.0%	21	28.8%	6	8.2%	1	1.4%
	Special	68	50	73.5%	46	67.6%	43	63.2%	14	20.6%	5	7.4%	0	0.0%
	Total	684	595	87.0%	536	78.4%	512	74.9%	146	21.3%	34	5.0%	12	1.8%
2003	Regular	582	524	90.0%	472	81.1%	460	79.0%	94	16.2%	22	3.8%	14	2.4%
	EOF	70	61	87.1%	47	67.1%	46	65.7%	14	20.0%	3	4.3%	1	1.4%
	Special	73	61	83.6%	59	80.8%	56	76.7%	20	27.4%	3	4.1%	1	1.4%
	Total	725	646	89.1%	578	79.7%	562	77.5%	128	17.7%	28	3.9%	16	2.2%
2004	Regular	610	549	90.0%	509	83.4%	479	78.5%	85	13.9%	16	2.6%	12	2.0%
	EOF	69	63	91.3%	50	72.5%	46	66.7%	23	33.3%	5	7.2%	4	5.8%
	Special	76	62	81.6%	57	75.0%	54	71.1%	20	26.3%	5	6.6%	2	2.6%
	Total	755	674	89.3%	616	81.6%	579	76.7%	128	17.0%	26	3.4%	18	2.4%
2005	Regular	602	530	88.0%	490	81.4%	465	77.2%	94	15.6%	21	3.5%	-	-
	EOF	71	63	88.7%	47	66.2%	44	62.0%	21	29.6%	7	9.9%	-	-
	Special	75	62	82.7%	54	72.0%	50	66.7%	21	28.0%	6	8.0%	-	-
	Total	748	655	87.6%	591	79.0%	559	74.7%	136	18.2%	34	4.5%	-	-
2006	Regular	649	587	90.4%	553	85.2%	516	79.5%	112	17.3%	-	-	-	-
	EOF	85	80	94.1%	61	71.8%	55	64.7%	25	29.4%	-	-	-	-
	Special	80	65	81.3%	56	70.0%	48	60.0%	22	27.5%	-	-	-	-
	Total	814	732	89.9%	670	82.3%	619	76.0%	159	19.5%	-	-	-	-
2007	Regular	700	620	88.6%	583	83.3%	542	77.4%	-	-	-	-	-	-
	EOF	74	61	82.4%	52	70.3%	49	66.2%	-	-	-	-	-	-
	Special	126	110	87.3%	93	73.8%	85	67.5%	-	-	-	-	-	-
	Total	900	791	87.9%	728	80.9%	676	75.1%	-	-	-	-	-	-
2008	Regular	656	566	86.3%	534	81.4%	-	-	-	-	-	-	-	-
	EOF	82	77	93.9%	66	80.5%	-	-	-	-	-	-	-	-
	Special	141	121	85.8%	104	73.8%	-	-	-	-	-	-	-	-
	Total	879	764	86.9%	704	80.1%	-	-	-	-	-	-	-	-
2009	Regular	745	657	88.2%	-	-	-	-	-	-	-	-	-	-
	EOF	84	78	92.9%	-	-	-	-	-	-	-	-	-	-
	Special	105	89	84.8%	-	-	-	-	-	-	-	-	-	-
	Total	934	824	88.2%	-	-	-	-	-	-	-	-	-	-

NEW UNDERGRADUATE STUDENT COHORT CUMULATIVE GRADUATION RATES

Fall of Entry	Sub-Cohorts*	Original Size	One-Year Cumulative Graduation		Two-Year Cumulative Graduation		Three-Year Cumulative Graduation		Four-Year Cumulative Graduation		Five-Year Cumulative Graduation		Six-Year Cumulative Graduation	
			#	Rate	#	Rate	#	Rate	#	Rate	#	Rate	#	Rate
1999	FTFTF	528	0	0.0%	1	0.2%	7	1.3%	203	38.4%	288	54.5%	311	59.4%
	PTFTF	8	0	0.0%	0	0.0%	0	0.0%	0	0.0%	0	0.0%	0	0.0%
	FTTR	364	2	0.5%	81	22.3%	159	43.7%	204	56.0%	219	60.2%	225	61.8%
	PTTR	152	0	0.0%	5	3.3%	14	9.2%	32	21.1%	38	25.0%	53	34.9%
	Total	1,052	2	0.2%	87	8.3%	180	17.1%	439	41.7%	545	51.8%	589	56.0%
2000	FTFTF	638	0	0.0%	2	0.3%	10	1.6%	284	44.5%	402	63.0%	419	65.7%
	PTFTF	6	0	0.0%	0	0.0%	0	0.0%	1	16.7%	1	16.7%	1	16.7%
	FTTR	369	3	0.8%	75	20.3%	172	46.6%	216	58.5%	232	62.9%	233	63.1%
	PTTR	150	0	0.0%	4	2.7%	23	15.3%	40	26.7%	50	33.3%	51	34.0%
	Total	1,163	3	0.3%	81	7.0%	205	17.6%	541	46.5%	685	58.9%	704	60.5%
2001	FTFTF	628	0	0.0%	0	0.0%	7	1.1%	304	48.4%	393	62.6%	407	64.8%
	PTFTF	5	0	0.0%	0	0.0%	0	0.0%	0	0.0%	1	20.0%	3	60.0%
	FTTR	364	0	0.0%	78	21.4%	183	50.3%	225	61.8%	236	64.8%	240	65.9%
	PTTR	141	0	0.0%	3	2.1%	21	14.9%	34	24.1%	45	31.9%	54	38.3%
	Total	1,138	0	0.0%	81	7.1%	211	18.5%	563	49.5%	675	59.3%	704	61.9%
2002	FTFTF	684	0	0.0%	0	0.0%	5	0.7%	330	48.2%	459	67.1%	477	69.7%
	PTFTF	3	0	0.0%	0	0.0%	0	0.0%	0	0.0%	0	0.0%	0	0.0%
	FTTR	433	3	0.7%	101	23.3%	221	51.0%	272	62.8%	288	66.5%	292	67.4%
	PTTR	135	0	0.0%	6	4.4%	25	18.5%	36	26.7%	46	34.1%	52	38.5%
	Total	1,255	3	0.2%	107	8.5%	251	20.0%	638	50.8%	793	63.2%	821	65.4%
2003	FTFTF	725	0	0.0%	0	0.0%	4	0.6%	428	59.0%	528	72.8%	537	74.1%
	PTFTF	0	0	0.0%	0	0.0%	0	0.0%	0	0.0%	0	0.0%	0	0.0%
	FTTR	378	2	0.5%	84	22.2%	190	50.3%	265	70.1%	275	72.8%	282	74.6%
	PTTR	120	0	0.0%	7	5.8%	22	18.3%	32	26.7%	40	33.3%	43	35.8%
	Total	1,223	2	0.2%	91	7.4%	216	17.7%	725	59.3%	843	68.9%	862	70.5%
2004	FTFTF	755	0	0.0%	0	0.0%	7	0.9%	486	64.4%	561	74.3%	565	74.8%
	PTFTF	0	0	0.0%	0	0.0%	0	0.0%	0	0.0%	0	0.0%	0	0.0%
	FTTR	398	2	0.5%	90	22.6%	236	59.3%	195	49.0%	211	53.0%	216	54.3%
	PTTR	93	0	0.0%	6	6.5%	20	21.5%	21	22.6%	30	32.3%	31	33.3%
	Total	1,246	2	0.2%	96	7.7%	263	21.1%	702	56.3%	802	64.4%	812	65.2%
2005	FTFTF	748	0	0.0%	2	0.3%	12	1.6%	446	59.6%	523	69.9%	-	-
	PTFTF	0	0	0.0%	0	0.0%	0	0.0%	0	0.0%	0	0.0%	-	-
	FTTR	396	3	0.8%	92	23.2%	221	55.8%	263	66.4%	272	68.7%	-	-
	PTTR	76	0	0.0%	4	5.3%	19	25.0%	26	34.2%	29	38.2%	-	-
	Total	1,220	3	0.2%	98	8.0%	252	20.7%	735	60.2%	824	67.5%	-	-
2006	FTFTF	813	0	0.0%	0	0.0%	10	1.2%	488	60.0%	-	-	-	-
	PTFTF	1	0	0.0%	0	0.0%	0	0.0%	1	0.0%	-	-	-	-
	FTTR	540	1	0.2%	146	27.0%	315	58.3%	380	70.4%	-	-	-	-
	PTTR	70	0	0.0%	1	1.4%	13	18.6%	21	30.0%	-	-	-	-
	Total	1,424	1	0.1%	147	10.3%	338	23.7%	890	62.5%	-	-	-	-
2007	FTFTF	900	0	0.0%	0	0.0%	8	0.9%	-	-	-	-	-	-
	PTFTF	2	0	0.0%	0	0.0%	0	0.0%	-	-	-	-	-	-
	FTTR	549	1	0.2%	151	27.5%	320	58.3%	-	-	-	-	-	-
	PTTR	67	0	0.0%	2	3.0%	17	25.4%	-	-	-	-	-	-
	Total	1,518	1	0.1%	153	10.1%	345	22.7%	-	-	-	-	-	-
2008	FTFTF	879	0	0.0%	0	0.0%	-	-	-	-	-	-	-	-
	PTFTF	1	0	0.0%	0	0.0%	-	-	-	-	-	-	-	-
	FTTR	564	2	0.4%	136	24.1%	-	-	-	-	-	-	-	-
	PTTR	57	0	0.0%	6	10.5%	-	-	-	-	-	-	-	-
	Total	1,501	2	0.1%	142	9.5%	-	-	-	-	-	-	-	-

FULL-TIME, FIRST-TIME FRESHMEN COHORT CUMULATIVE GRADUATION RATES

Fall of Entry	Sub-Cohorts	Original Size	One-Year		Two-Year		Three-Year		Four-Year		Five-Year		Six-Year	
			Cumulative Graduation		Cumulative Graduation		Cumulative Graduation		Cumulative Graduation		Cumulative Graduation		Cumulative Graduation	
2002	Amer. I/Nat.Al.	3	0	0.0%	0	0.0%	0	0.0%	1	33.3%	1	33.3%	1	0.0%
	Asian/Pac Is.	23	0	0.0%	0	0.0%	1	4.3%	8	34.8%	12	52.2%	12	52.2%
	Black, Non-Hisp	58	0	0.0%	0	0.0%	0	0.0%	26	44.8%	38	65.5%	42	72.4%
	Hispanic	69	0	0.0%	0	0.0%	0	0.0%	18	26.1%	37	53.6%	37	53.6%
	White, non Hisp.	531	0	0.0%	0	0.0%	4	0.8%	277	52.2%	371	69.9%	385	72.5%
	Total	684	0	0.0%	0	0.0%	5	0.7%	330	48.2%	459	67.1%	477	69.7%
2003	Amer. I/Nat.Al.	3	0	0.0%	0	0.0%	0	0.0%	3	100.0%	3	100.0%	3	0.0%
	Asian/Pac Is.	25	0	0.0%	0	0.0%	0	0.0%	15	60.0%	19	76.0%	19	76.0%
	Black, Non-Hisp	53	0	0.0%	0	0.0%	0	0.0%	22	41.5%	31	58.5%	32	60.4%
	Hispanic	58	0	0.0%	0	0.0%	1	1.7%	26	44.8%	34	58.6%	35	60.3%
	White, non Hisp.	586	0	0.0%	0	0.0%	3	0.5%	362	61.8%	441	75.3%	448	76.5%
	Total	725	0	0.0%	0	0.0%	4	0.6%	428	59.0%	528	72.8%	537	74.1%
2004	Amer. I/Nat.Al.	1	0	0.0%	0	0.0%	0	0.0%	0	0.0%	0	0.0%	0	0.0%
	Asian/Pac Is.	40	0	0.0%	0	0.0%	1	2.5%	24	60.0%	26	65.0%	26	65.0%
	Black, Non-Hisp	48	0	0.0%	0	0.0%	0	0.0%	19	39.6%	25	52.1%	25	52.1%
	Hispanic	64	0	0.0%	0	0.0%	0	0.0%	34	53.1%	46	71.9%	47	73.4%
	White, non Hisp.	602	0	0.0%	0	0.0%	6	1.0%	409	67.9%	464	77.1%	467	77.6%
	Total	755	0	0.0%	0	0.0%	7	0.9%	486	64.4%	561	74.3%	565	74.8%
2005	Amer. I/Nat.Al.	2	0	0.0%	0	0.0%	0	0.0%	1	50.0%	2	100.0%	-	-
	Asian/Pac Is.	32	0	0.0%	0	0.0%	0	0.0%	16	50.0%	20	62.5%	-	-
	Black, Non-Hisp	67	0	0.0%	0	0.0%	0	0.0%	22	32.8%	29	43.3%	-	-
	Hispanic	67	0	0.0%	0	0.0%	0	0.0%	21	31.3%	34	50.7%	-	-
	White, non Hisp.	580	0	0.0%	2	0.3%	12	2.1%	386	66.6%	438	75.5%	-	-
	Total	748	0	0.0%	2	0.3%	12	1.6%	446	59.6%	523	69.9%	-	-
2006	Amer. I/Nat.Al.	4	0	0.0%	0	0.0%	0	0.0%	1	25.0%	-	-	-	-
	Asian/Pac Is.	35	0	0.0%	0	0.0%	0	0.0%	20	57.1%	-	-	-	-
	Black, Non-Hisp	71	0	0.0%	0	0.0%	0	0.0%	23	32.4%	-	-	-	-
	Hispanic	91	0	0.0%	0	0.0%	1	1.1%	35	38.5%	-	-	-	-
	White, non Hisp.	613	0	0.0%	0	0.0%	9	1.5%	409	66.7%	-	-	-	-
	Total	814	0	0.0%	0	0.0%	10	1.2%	488	60.0%	-	-	-	-
2007	Amer. I/Nat.Al.	2	0	0.0%	0	0.0%	0	0.0%	-	-	-	-	-	-
	Asian/Pac Is.	44	0	0.0%	0	0.0%	1	2.3%	-	-	-	-	-	-
	Black, Non-Hisp	67	0	0.0%	0	0.0%	0	0.0%	-	-	-	-	-	-
	Hispanic	78	0	0.0%	0	0.0%	0	0.0%	-	-	-	-	-	-
	White, non Hisp.	709	0	0.0%	0	0.0%	7	1.0%	-	-	-	-	-	-
	Total	900	0	0.0%	0	0.0%	8	0.9%	-	-	-	-	-	-
2008	Amer. I/Nat.Al.	2	0	0.0%	0	0.0%	-	-	-	-	-	-	-	-
	Asian/Pac Is.	56	0	0.0%	0	0.0%	-	-	-	-	-	-	-	-
	Black, Non-Hisp	55	0	0.0%	0	0.0%	-	-	-	-	-	-	-	-
	Hispanic	93	0	0.0%	0	0.0%	-	-	-	-	-	-	-	-
	White, non Hisp.	670	0	0.0%	0	0.0%	-	-	-	-	-	-	-	-
	missing	3	0	0.0%	0	0.0%	-	-	-	-	-	-	-	-
Total	879	0	0.0%	0	0.0%	-	-	-	-	-	-	-	-	

**TEN-YEAR CUMULATIVE GRADUATION RATES BY ADMIT TYPE
FOR FULL-TIME, FIRST-TIME FRESHMEN**

Fall of Entry	Sub-Cohorts	Original Size	Four-Year Cumulative Graduation [1]		Five-Year Cumulative Graduation		Six-Year Cumulative Graduation		Eight-Year Cumulative Graduation		Ten-Year Cumulative Graduation	
			#	Rate	#	Rate	#	Rate	#	Rate	#	Rate
1996	Regular	296	87	29.4%	155	52.4%	169	57.1%	173	58.4%	174	58.8%
	EOF	74	9	12.2%	27	36.5%	32	43.2%	34	45.9%	34	45.9%
	Special	43	6	14.0%	23	53.5%	23	53.5%	23	53.5%	23	53.5%
	Total	413	102	24.7%	205	49.6%	224	54.2%	230	55.7%	231	55.9%
1997	Regular	340	114	33.5%	172	50.6%	186	54.7%	194	57.1%	200	58.8%
	EOF	67	11	16.4%	29	43.3%	34	50.7%	37	55.2%	38	56.7%
	Special	47	6	12.8%	21	44.7%	24	51.1%	25	53.2%	26	55.3%
	Total	454	131	28.9%	222	48.9%	244	53.7%	256	56.4%	264	58.1%
1998	Regular	352	136	38.6%	211	59.9%	231	65.6%	236	67.0%	245	69.6%
	EOF	69	20	29.0%	33	47.8%	37	53.6%	38	55.1%	39	56.5%
	Special	51	14	27.5%	23	45.1%	26	51.0%	26	51.0%	29	56.9%
	Total	472	170	36.0%	267	56.6%	294	62.3%	300	63.6%	313	66.3%
1999	Regular	414	172	41.5%	235	56.8%	252	60.9%	257	62.1%	259	62.6%
	EOF	60	20	33.3%	27	45.0%	30	50.0%	34	56.7%	34	56.7%
	Special	54	11	20.4%	26	48.1%	29	53.7%	29	53.7%	29	53.7%
	Total	528	203	38.4%	288	54.5%	311	59.4%	320	60.6%	322	61.0%
2000	Regular	511	250	48.9%	341	66.7%	353	69.1%	366	71.6%	369	72.2%
	EOF	64	16	25.0%	31	48.4%	35	54.7%	37	57.8%	37	57.8%
	Special	63	18	28.6%	30	47.6%	31	49.2%	35	55.6%	35	55.6%
	Total	638	284	44.5%	402	63.0%	419	65.7%	438	68.7%	441	69.1%
2001	Regular	497	265	53.3%	329	66.2%	337	67.8%	340	68.4%	-	-
	EOF	69	18	26.1%	30	43.5%	35	50.7%	36	52.2%	-	-
	Special	62	21	33.9%	34	54.8%	35	56.5%	36	58.1%	-	-
	Total	628	304	48.4%	393	62.6%	407	64.8%	412	65.6%	-	-
2002	Regular	543	289	53.2%	392	72.2%	403	74.2%	408	75.1%	-	-
	EOF	73	17	23.3%	37	50.7%	41	56.2%	41	56.2%	-	-
	Special	68	24	35.3%	30	44.1%	33	48.5%	34	50.0%	-	-
	Total	684	330	48.2%	459	67.1%	477	69.7%	483	70.6%	-	-
2003	Regular	582	364	62.5%	438	75.3%	444	76.3%	447	76.8%	-	-
	EOF	70	27	38.6%	37	52.9%	39	55.7%	40	57.1%	-	-
	Special	73	37	50.7%	53	72.6%	54	74.0%	54	74.0%	-	-
	Total	725	428	59.0%	528	72.8%	537	74.1%	541	74.6%	-	-
2004	Regular	610	426	69.8%	475	77.9%	477	78.2%	-	-	-	-
	EOF	69	25	36.2%	38	55.1%	39	56.5%	-	-	-	-
	Special	76	35	46.1%	48	63.2%	49	64.5%	-	-	-	-
	Total	755	486	64.4%	561	74.3%	565	74.8%	-	-	-	-
2005	Regular	602	399	66.3%	452	75.1%	-	-	-	-	-	-
	EOF	71	18	25.4%	31	43.7%	-	-	-	-	-	-
	Special	75	29	38.7%	40	53.3%	-	-	-	-	-	-
	Total	748	446	59.6%	523	69.9%	-	-	-	-	-	-
2006	Regular	649	440	67.8%	-	-	-	-	-	-	-	-
	EOF	85	24	28.2%	-	-	-	-	-	-	-	-
	Special	80	24	30.0%	-	-	-	-	-	-	-	-
	Total	814	488	60.0%	-	-	-	-	-	-	-	-

[1] Includes all from cohort who are graduated in fewer than four years. *1999 cohort adjusted in fall 2005 from 528 to 524.