

**SECTION III:**

**ENROLLMENT**

2010 INSTITUTIONAL PROFILE

TOTAL FALL 2010 ENROLLMENT = 6,008

**By Age**

Less than 20	1,682	28.0%
20 to 24	3,530	58.8%
25 to 29	357	5.9%
30 to 39	185	3.1%
Greater than 39	254	4.2%
Missing	0	N/A

**By Sex**

Female	3,566	59.4%
Male	2,442	40.6%

**By Ethnicity**

Hispanic/Latino, Any Race	613	10.2%
Am. Indian/Nat. Alaskan, non-Hispanic	12	0.2%
Asian, non-Hispanic	267	4.4%
Hawaiian/Pac.Islander, non-Hispanic	25	0.4%
Black, non-Hispanic	275	4.6%
White, non-Hispanic	4,588	76.4%
Multiple Races, non-Hispanic	74	1.2%
Missing	154	2.6%

**By Citizenship**

U.S. Citizen/Permanent Resident	5,922	98.6%
non-Citizen/non-Resident	86	1.4%

**By Ethnicity and Citizenship**

Hispanic/Latino, Any Race	612	10.2%
Am. Indian/Nat. Alaskan, non-Hispanic	12	0.2%
Asian, non-Hispanic	247	4.1%
Hawaiian/Pac.Islander, non-Hispanic	25	0.4%
Black, non-Hispanic	266	4.4%
White, non-Hispanic	4,541	75.6%
Multiple Races, non-Hispanic	73	1.2%
Nonresident Alien	86	1.4%
Missing	146	2.4%

**By State of Origin**

New Jersey	5,671	94.4%
New York	203	3.4%
Other U.S. State/Territory	45	0.7%
Foreign Country	86	1.4%
Missing	3	0.0%

TOTAL FALL 2010 ENROLLMENT = 6,008

	First-time Undergraduate		Transfer Undergraduate		Readmitted Undergraduate		Continuing Undergraduate		First-time/Transfer Graduate		Continuing/Readmit Graduate		All Nondegree (Undergrad/Grad)	
	Number	Percent	Number	Percent	Number	Percent	Number	Percent	Number	Percent	Number	Percent	Number	Percent
<b>By Age</b>														
< 20	885	98.7%	87	14.8%	0	0.0%	678	17.0%	0	0.0%	0	0.0%	32	11.2%
20 to 24	12	1.3%	420	71.3%	19	35.8%	2,922	73.1%	10	20.4%	7	5.1%	140	49.0%
25 to 29	0	0.0%	45	7.6%	13	24.5%	202	5.1%	10	20.4%	53	38.7%	34	11.9%
30 to 39	0	0.0%	21	3.6%	9	17.0%	92	2.3%	9	18.4%	28	20.4%	26	9.1%
> 39	0	0.0%	16	2.7%	12	22.6%	103	2.6%	20	40.8%	49	35.8%	54	18.9%
	897		589		53		3,997		49		137		286	
<b>By Sex</b>														
Female	524	58.4%	356	60.4%	32	60.4%	2,320	58.0%	40	81.6%	102	74.5%	192	67.1%
Male	373	41.6%	233	39.6%	21	39.6%	1,677	42.0%	9	18.4%	35	25.5%	94	32.9%
	897		589		53		3,997		49		137		286	
<b>By Ethnicity</b>														
Hispanic/Latino, Any Race	99	11.0%	70	11.9%	6	11.3%	411	10.3%	0	0.0%	9	6.6%	18	6.3%
Am. Indian/Nat. Alaskan, non-Hispanic	1	0.1%	1	0.2%	0	0.0%	9	0.2%	1	2.0%	0	0.0%	0	0.0%
Asian, non-Hispanic	46	5.1%	30	5.1%	0	0.0%	173	4.3%	2	4.1%	3	2.2%	13	4.5%
Hawaiian/Pac. Islander, non-Hispanic	3	0.3%	2	0.3%	1	1.9%	19	0.5%	0	0.0%	0	0.0%	0	0.0%
Black, non-Hispanic	34	3.8%	26	4.4%	6	11.3%	198	5.0%	0	0.0%	8	5.8%	3	1.0%
White, non-Hispanic	678	75.6%	398	67.6%	33	62.3%	3,091	77.3%	39	79.6%	116	84.7%	233	81.5%
Multiple Races, non-Hispanic	6	0.7%	8	1.4%	0	0.0%	57	1.4%	0	0.0%	1	0.7%	2	0.7%
missing	30	3.3%	54	9.2%	7	13.2%	39	1.0%	7	14.3%	0	0.0%	17	5.9%
	897		589		53		3,997		49		137		286	
<b>By Citizenship</b>														
U.S. Citizen/Resident	893	99.6%	586	99.5%	53	100.0%	3,951	98.8%	49	100.0%	137	100.0%	253	88.5%
non-Citizen/non-Res.	4	0.4%	3	0.5%	0	0.0%	46	1.2%	0	0.0%	0	0.0%	33	11.5%
	897		589		53		3,997		49		137		286	
<b>By Ethnicity &amp; Citizenship</b>														
Hispanic/Latino, Any Race	99	11.0%	70	11.9%	6	11.3%	410	10.3%	0	0.0%	9	6.6%	18	6.3%
Am. Indian/Nat. Alaskan, non-Hispanic	1	0.1%	1	0.2%	0	0.0%	9	0.2%	1	2.0%	0	0.0%	0	0.0%
Asian, non-Hispanic	42	4.7%	28	4.8%	0	0.0%	162	4.1%	2	4.1%	3	2.2%	10	3.5%
Hawaiian/Pac. Islander, non-Hispanic	3	0.3%	2	0.3%	1	1.9%	19	0.5%	0	0.0%	0	0.0%	0	0.0%
Black, non-Hispanic	34	3.8%	26	4.4%	6	11.3%	189	4.7%	0	0.0%	8	5.8%	3	1.0%
White, non-Hispanic	678	75.6%	397	67.4%	33	62.3%	3,068	76.8%	39	79.6%	116	84.7%	210	73.4%
Multiple Races, non-Hispanic	6	0.7%	8	1.4%	0	0.0%	56	1.4%	0	0.0%	1	0.7%	2	0.7%
Nonresident Alien	4	0.4%	3	0.5%	0	0.0%	46	1.2%	0	0.0%	0	0.0%	33	11.5%
missing	30	3.3%	54	9.2%	7	13.2%	38	1.0%	7	14.3%	0	0.0%	10	3.5%
	897		589		53		3,997		49		137		286	
<b>By State of Origin</b>														
New Jersey	870	97.0%	543	92.2%	48	90.6%	3,794	94.9%	44	89.8%	133	97.1%	239	83.6%
New York	12	1.3%	38	6.5%	4	7.5%	129	3.2%	5	10.2%	4	2.9%	11	3.8%
Other U.S. State/Ter.	10	1.1%	5	0.8%	1	1.9%	26	0.7%	0	0.0%	0	0.0%	3	1.0%
Foreign Country	4	0.4%	3	0.5%	0	0.0%	46	1.2%	0	0.0%	0	0.0%	33	11.5%
missing	1	0.1%	0	0.0%	0	0.0%	2	0.1%	0	0.0%	0	0.0%	0	0.0%
	897		589		53		3,997		49		137		286	

TOTAL FALL 2010 ENROLLMENT = 6,008

**By Veteran Status**

Veteran/Dependent of Deceased Veteran	53	0.9%
Non-Veteran	5,955	99.1%

**By Disability Status**

Disabled	313	5.2%
Not Disabled	5,695	94.8%

**By Matriculation Status**

Degree-seeking	5,722	95.2%
Nondegree-seeking	286	4.8%

**By Attendance Status**

Full-time	5,277	87.8%
Part-time	731	12.2%

**By Undergraduate/Graduate Status**

Total Undergraduate	5,796	96.5%
Total Graduate	212	3.5%

**By Undergraduate Class (N=5,796)**

Freshmen	1,306	23.6%
Sophomores	1,299	23.5%
Juniors	1,549	28.0%
Seniors	1,382	25.0%
Unclassified UG/Nondegree-Seeking	260	excluded from Pct.

**By Undergraduate Special Programs (N=5,796)**

EOF	374	6.5%
EOF Honor's Program	0	0.0%
Honor's Program	126	2.2%
No Special Program Designation	5,296	91.4%

**By Status When First Admitted (UG only N=5,796)**

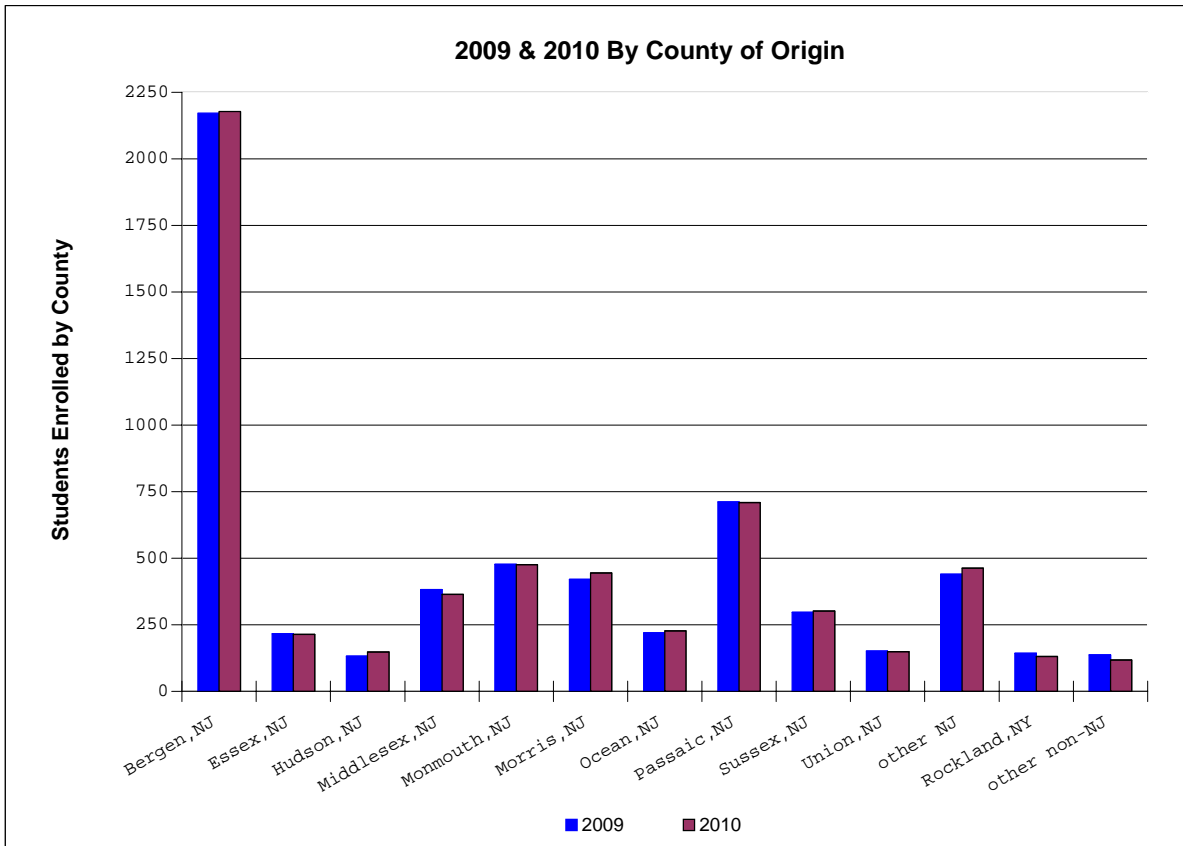
EOF Admit	325	5.9%
EOF Transfer Admit	44	0.8%
Regular Admit	2,665	48.1%
Special Admit	415	7.5%
Transfer Admit	2,087	37.7%
Unclassified UG/Non-Matriculated	260	excluded from Pct.

TOTAL FALL 2010 ENROLLMENT = 6,008

	First-time Undergraduate		Transfer Undergraduate		Readmitted Undergraduate		Continuing Undergraduate		First-time/Transfer Graduate		Continuing/Readmit Graduate		All Nondegree (Undergrad/Grad)	
	Number	Percent	Number	Percent	Number	Percent	Number	Percent	Number	Percent	Number	Percent	Number	Percent
<b>By Veteran Status</b>														
Veteran/Dependent	4	0.4%	8	1.4%	1	1.9%	38	1.0%	0	0.0%	2	1.5%	0	0.0%
Non-Veteran	893	99.6%	581	98.6%	52	98.1%	3,959	99.0%	49	100.0%	135	98.5%	286	100.0%
	897		589		53		3,997		49		137		286	
<b>By Disability Status</b>														
Disabled	36	4.0%	25	4.2%	3	5.7%	245	6.1%	0	0.0%	0	0.0%	4	1.4%
Not Disabled	861	96.0%	564	95.8%	50	94.3%	3,752	93.9%	49	100.0%	137	100.0%	282	98.6%
	897		589		53		3,997		49		137		286	
<b>By Attend. Status</b>														
Full-time	895	99.8%	551	93.5%	33	62.3%	3,693	92.4%	3	6.1%	4	2.9%	98	34.3%
Part-time	2	0.2%	38	6.5%	20	37.7%	304	7.6%	46	93.9%	133	97.1%	188	65.7%
	897		589		53		3,997		49		137		286	
<b>By Undergrad vs. Grad</b>														
Undergraduate	897	100.0%	589	100.0%	53	100.0%	3,997	100.0%	0	0.0%	0	0.0%	260	90.9%
Graduate	0	0.0%	0	0.0%	0	0.0%	0	0.0%	49	100.0%	137	100.0%	26	9.1%
	897		589		53		3,997		49		137		286	
<b>By UG Class (N=5,796)</b>														
Freshmen	888	99.0%	136	23.1%	1	1.9%	281	7.0%	0	0.0%	0	0.0%	141	0.0%
Sophomores	9	1.0%	226	38.4%	13	24.5%	1,051	26.3%	0	0.0%	0	0.0%	7	0.0%
Juniors	0	0.0%	227	38.5%	16	30.2%	1,306	32.7%	0	0.0%	0	0.0%	2	0.0%
Seniors	0	0.0%	0	0.0%	23	43.4%	1,359	34.0%	0	0.0%	0	0.0%	110	0.0%
Unclassified UG	0	N/A	0	N/A	0	N/A	N/A	N/A	0	N/A	0	N/A	0	N/A
	897		589		53		3,997		0		0		260	
<b>By UG Spec. Prgm. (N=5,796)</b>														
EOF	92	10.3%	136	23.1%	1	1.9%	281	7.0%	0	0.0%	0	0.0%	1	0.0%
EOF Honor's Program	0	0.0%	226	38.4%	13	24.5%	1,051	26.3%	0	0.0%	0	0.0%	0	0.0%
Honor's Program	21	2.3%	227	38.5%	16	30.2%	1,306	32.7%	0	0.0%	0	0.0%	0	0.0%
No Spec. Pr. Desig.	784	87.4%	0	0.0%	23	43.4%	1,359	34.0%	0	0.0%	0	0.0%	259	N/A
	897		589		53		3,997		0		0		260	
<b>By UG Admit Status (N=5,796)</b>														
EOF	92	10.3%	0	0.0%	4	7.5%	229	5.7%	0	0.0%	0	0.0%	0	0.0%
EOF Transfer	0	0.0%	13	2.2%	0	0.0%	31	0.8%	0	0.0%	0	0.0%	0	0.0%
Regular	696	77.6%	0	0.0%	18	34.0%	1,951	48.8%	0	0.0%	0	0.0%	0	0.0%
Special	109	12.2%	0	0.0%	3	5.7%	303	7.6%	0	0.0%	0	0.0%	0	0.0%
Transfer	0	0.0%	576	97.8%	28	52.8%	1,483	37.1%	0	0.0%	0	0.0%	0	0.0%
Unclassified UG	0	N/A	0	N/A	0	N/A	0	N/A	0	N/A	0	N/A	260	N/A
	897		589		53		3,997		0		0		260	

**By County of Origin**

Atlantic	21	0.3%	Salem	3	0.0%
Bergen	2,178	36.3%	Somerset	100	1.7%
Burlington	57	0.9%	Sussex	301	5.0%
Camden	43	0.7%	Union	149	2.5%
Cape May	15	0.2%	Warren	74	1.2%
Cumberland	9	0.1%			
Essex	214	3.6%		Subtotal	5,671
Gloucester	18	0.3%			94.4%
Hudson	147	2.4%	Rockland	131	2.2%
Hunterdon	65	1.1%	Orange	41	0.7%
Litchfield	0	0.0%	Westchester	1	0.0%
Mercer	57	0.9%	Other non-NJ	75	1.2%
Middlesex	364	6.1%	missing	3	0.0%
Monmouth	476	7.9%	International	86	1.4%
Morris	444	7.4%		Subtotal	337
Ocean	227	3.8%			5.6%
Passaic	709	11.8%			
			<b>TOTAL:</b>		<b>6,008</b>



TOTAL FALL 2010 ENROLLMENT = 6,008

**By Non-Citizen Country of Origin (N = 27 countries)**

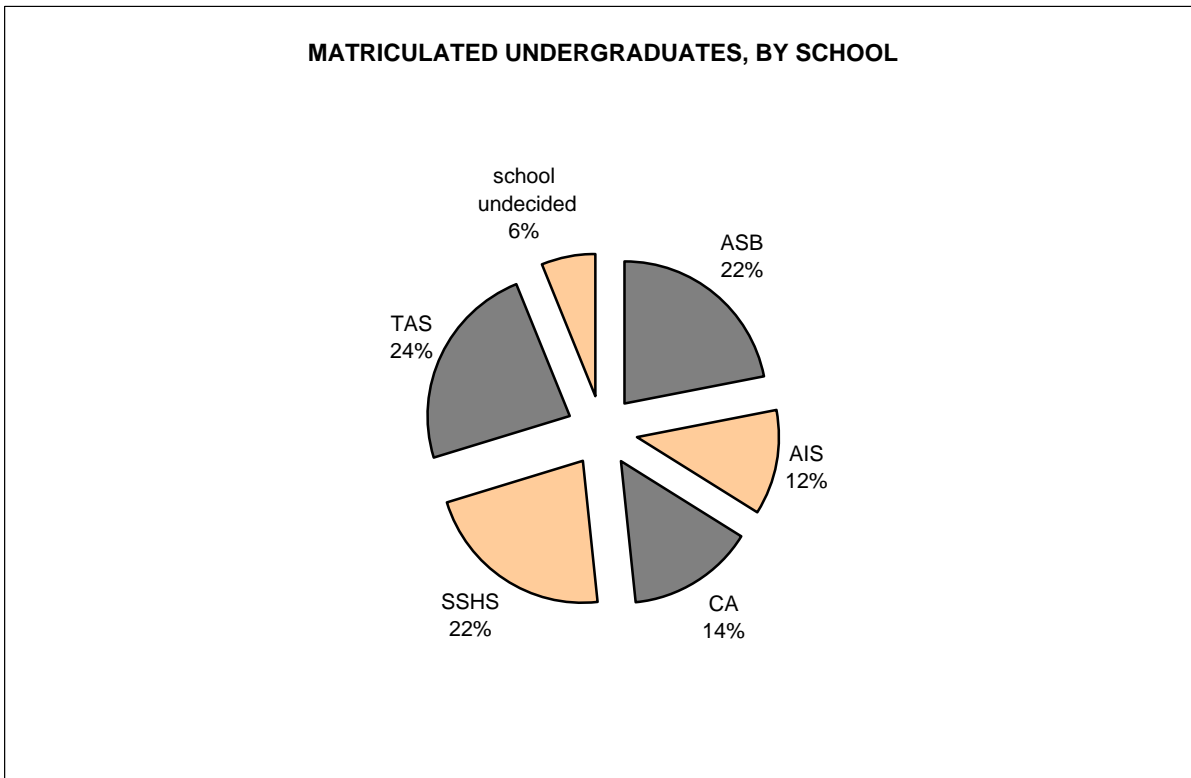
Germany	21	24.4%
Bulgaria	18	20.9%
Nepal	4	4.7%
Nigeria	4	4.7%
Sweden	4	4.7%
Brazil	3	3.5%
China	3	3.5%
India	3	3.5%
Kenya	3	3.5%
France	2	2.3%
Mexico	2	2.3%
Poland	2	2.3%
South Africa	2	2.3%
South Korea	2	2.3%
Afghanistan	1	1.2%
Austria	1	1.2%
Bangladesh	1	1.2%
Jamaica	1	1.2%
Japan	1	1.2%
Mongolia	1	1.2%
Oman	1	1.2%
Pakistan	1	1.2%
Russia	1	1.2%
St. Vincent and Grenadin	1	1.2%
Trinidad and Tobago	1	1.2%
Turkey	1	1.2%
Ukraine	1	1.2%

86

TOTAL FALL 2010 ENROLLMENT = 6,008

**By School, Matriculated Undergraduates (N= 5,536)**

Anisfield School of Business	1,213	21.9%
American and International Studies	669	12.1%
Contemporary Arts	791	14.3%
Social Science and Human Services	1,223	22.1%
Theoretical and Applied Sciences	1,294	23.4%
Matriculated - School Undecided	346	6.3%

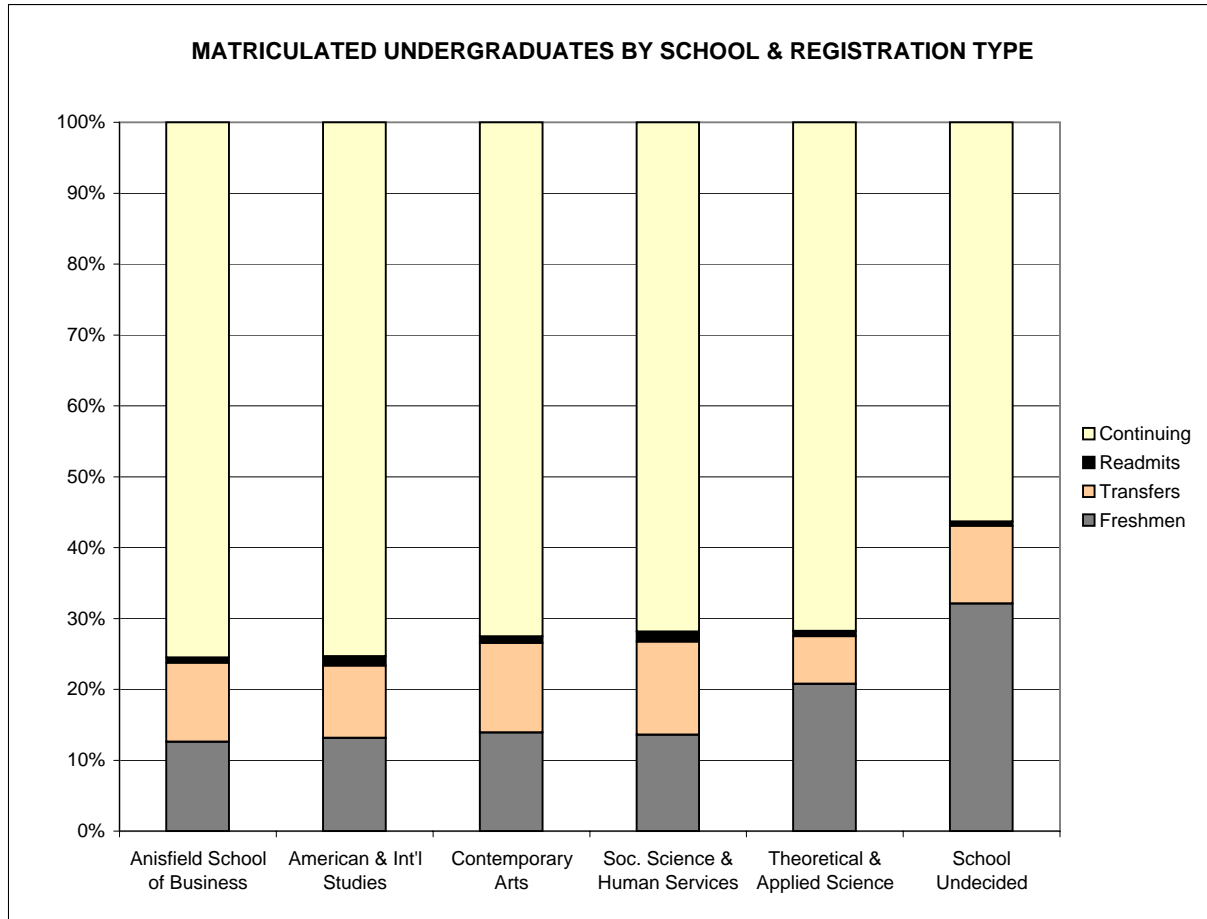




TOTAL FALL 2010 ENROLLMENT = 6,008

By UG School [1]	First-time Undergraduate		Transfer Undergraduate		Readmitted Undergraduate		Continuing Undergraduate	
	Number	Row Percent	Number	Row Percent	Number	Row Percent	Number	Row Percent
Anisfield School of Business	153	12.6%	135	11.1%	9	0.7%	916	75.5%
American & Int'l Studies	88	13.2%	68	10.2%	9	1.3%	504	75.3%
Contemporary Arts	110	13.9%	100	12.6%	7	0.9%	574	72.6%
Soc. Science & Human Services	166	13.6%	161	13.2%	17	1.4%	879	71.9%
Theoretical & Applied Science	269	20.8%	87	6.7%	9	0.7%	929	71.8%
School Undecided	111	32.1%	38	11.0%	2	0.6%	195	56.4%
	897	16.2%	589	10.6%	53	1.0%	3,997	72.2%

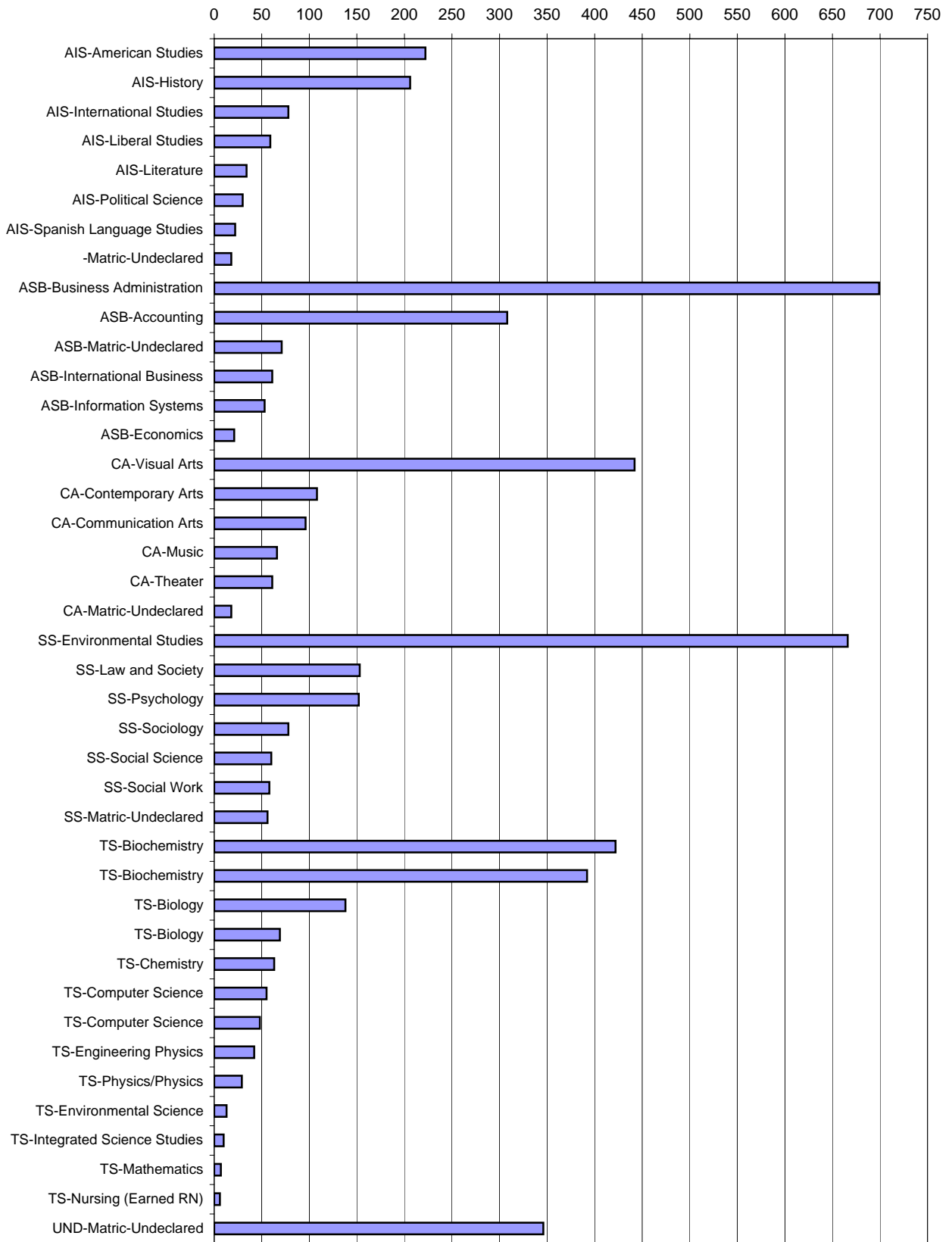
[1] Matriculated undergraduates (N = 5,536)



**By School and Major, Matriculated Undergraduates (N= 5,536)**

ASB	Accounting	308	5.6%
	Business Administration	699	12.6%
	Economics	21	0.4%
	Information Systems	53	1.0%
	International Business	61	1.1%
	Matriculated- Undecided Major	71	1.3%
AIS	American Studies	18	0.3%
	History	206	3.7%
	International Studies	59	1.1%
	Liberal Studies	22	0.4%
	Literature	222	4.0%
	Political Science	78	1.4%
	Spanish	34	0.6%
	Matriculated- Undecided Major	30	0.5%
CA	Communication Arts	442	8.0%
	Contemporary Arts	61	1.1%
	Music	108	2.0%
	Theater	66	1.2%
	Visual Arts	96	1.7%
	Matriculated- Undecided Major	18	0.3%
SSHS	Environmental Studies	60	1.1%
	Law and Society	152	2.7%
	Psychology	666	12.0%
	Social Science	56	1.0%
	Social Work	153	2.8%
	Sociology	78	1.4%
	Matriculated- Undecided Major	58	1.0%
TAS	Allied Health	10	0.2%
	Biochemistry	48	0.9%
	Bioinformatics	13	0.2%
	Biology	392	7.1%
	Chemistry	42	0.8%
	Clinical Lab Science	7	0.1%
	Computer Science	69	1.2%
	Engineering Physics/ Physics	29	0.5%
	Environmental Science	55	1.0%
	Integrated Science	6	0.1%
	Mathematics	138	2.5%
	Nursing	422	7.6%
	Matriculated- Undecided Major	63	1.1%
	UND	School & Major Undecided	346

**FALL 2010 MATRICULATED UNDERGRADUATE  
ENROLLMENT BY SCHOOL AND MAJOR**



TOTAL FALL 2010 ENROLLMENT = 6,008

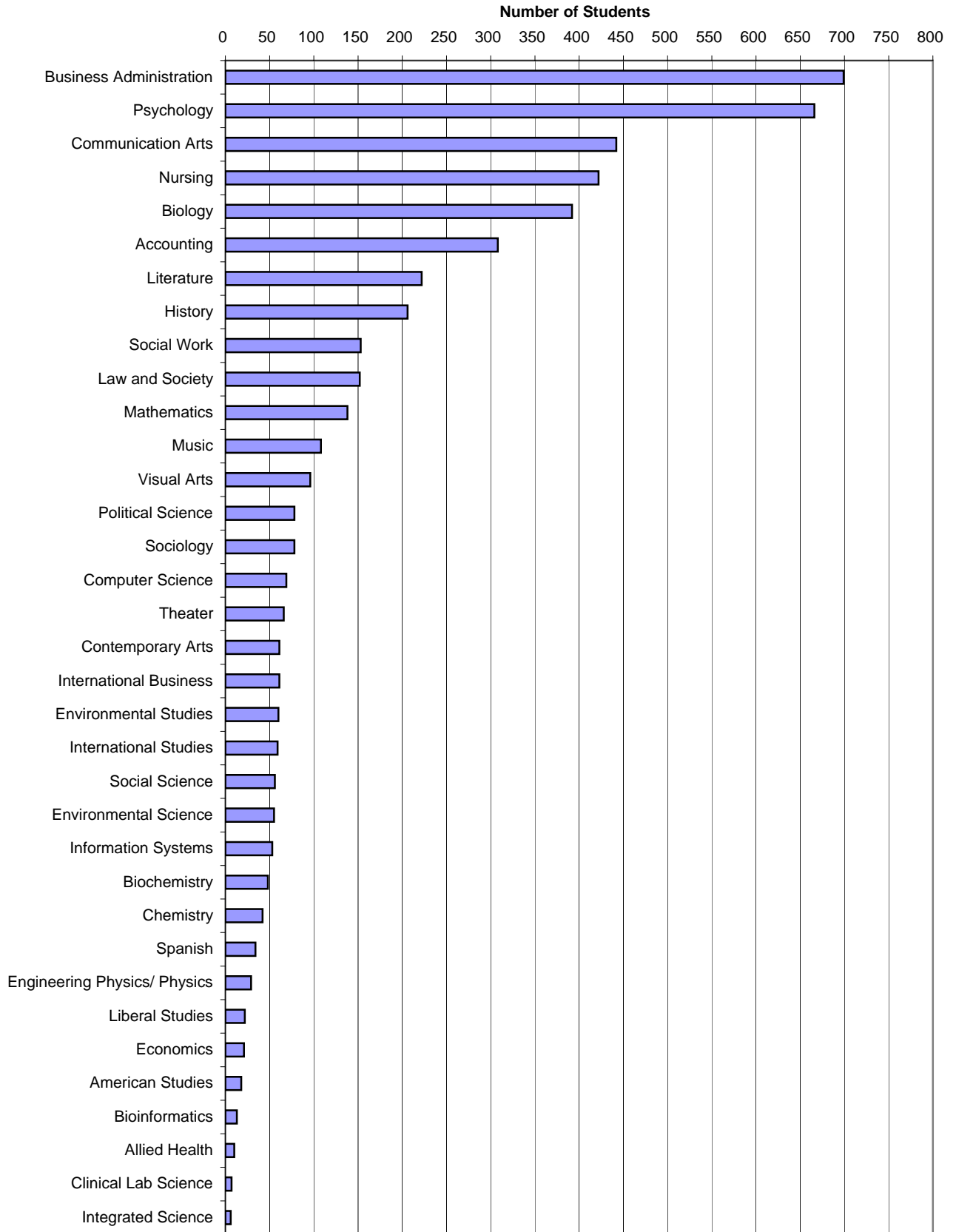
**By Major, Matriculated Undergraduates (N = 5,536)**

Accounting	308	6.2%
Allied Health	10	0.2%
American Studies	18	0.4%
Biochemistry	48	1.0%
Bioinformatics	13	0.3%
Biology	392	7.9%
Business Administration	699	14.1%
Chemistry	42	0.8%
Clinical Lab Science	7	0.1%
Communication Arts	442	8.9%
Computer Science	69	1.4%
Contemporary Arts	61	1.2%
Economics	21	0.4%
Engineering Physics/ Physics	29	0.6%
Environmental Science	55	1.1%
Environmental Studies	60	1.2%
History	206	4.2%
Information Systems	53	1.1%
Integrated Science	6	0.1%
International Business	61	1.2%
International Studies	59	1.2%
Law and Society	152	3.1%
Liberal Studies	22	0.4%
Literature	222	4.5%
Mathematics	138	2.8%
Music	108	2.2%
Nursing	422	8.5%
Political Science	78	1.6%
Psychology	666	13.5%
Social Science	56	1.1%
Social Work	153	3.1%
Sociology	78	1.6%
Spanish	34	0.7%
Theater	66	1.3%
Visual Arts	96	1.9%
Undecided Major	586	N/A

5,536

TOTAL FALL 2010 ENROLLMENT = 6,008

**FALL 2010 MATRICULATED UNDERGRADUATE  
ENROLLMENT BY PRIMARY MAJOR**



**MATRICULATED UNDERGRADUATES (N = 5,536) BY SCHOOL, MAJOR, AND REGISTRATION TYPE**

		First-time Undergraduate		Transfer Undergraduate		Readmitted Undergraduate		Continuing Undergraduate	
		Number	Row Pct	Number	Row Pct	Number	Row Pct	Number	Row Pct
ASB	Accounting	42	13.6%	41	13.3%	5	1.6%	220	71.4%
	Business Administration	78	11.2%	81	11.6%	4	0.6%	536	76.7%
	Economics	4	19.0%	1	4.8%	0	0.0%	16	76.2%
	Information Systems	3	5.7%	2	3.8%	0	0.0%	48	90.6%
	International Business	5	8.2%	6	9.8%	0	0.0%	50	82.0%
	Matriculated- Undecided Major	21	29.6%	4	5.6%	0	0.0%	46	64.8%
AIS	American Studies	2	11.1%	0	0.0%	0	0.0%	16	88.9%
	History	20	9.7%	23	11.2%	4	1.9%	159	77.2%
	International Studies	3	5.1%	8	13.6%	0	0.0%	48	81.4%
	Liberal Studies	5	22.7%	5	22.7%	1	4.5%	11	50.0%
	Literature	34	15.3%	24	10.8%	1	0.5%	163	73.4%
	Political Science	6	7.7%	3	3.8%	3	3.8%	66	84.6%
	Spanish Language Studies	1	2.9%	4	11.8%	0	0.0%	29	85.3%
	Matriculated- Undecided Major	17	56.7%	1	3.3%	0	0.0%	12	40.0%
CA	Communication Arts	47	10.6%	51	11.5%	3	0.7%	341	77.1%
	Contemporary Arts	5	8.2%	4	6.6%	2	3.3%	50	82.0%
	Music	24	22.2%	19	17.6%	1	0.9%	64	59.3%
	Theater	11	16.7%	8	12.1%	0	0.0%	47	71.2%
	Visual Arts	11	11.5%	18	18.8%	1	1.0%	66	68.8%
	Matriculated- Undecided Major	12	66.7%	0	0.0%	0	0.0%	6	33.3%
SSHS	Environmental Studies	7	11.7%	6	10.0%	1	1.7%	46	76.7%
	Law and Society	22	14.5%	18	11.8%	3	2.0%	109	71.7%
	Psychology	81	12.2%	74	11.1%	7	1.1%	504	75.7%
	Social Science	5	8.9%	8	14.3%	1	1.8%	42	75.0%
	Social Work	15	9.8%	29	19.0%	3	2.0%	106	69.3%
	Sociology	5	6.4%	18	23.1%	1	1.3%	54	69.2%
	Matriculated- Undecided Major	31	53.4%	8	13.8%	1	1.7%	18	31.0%
TAS	Allied Health	3	30.0%	1	10.0%	0	0.0%	6	60.0%
	Biochemistry	9	18.8%	0	0.0%	0	0.0%	39	81.3%
	Bioinformatics	6	46.2%	1	7.7%	0	0.0%	6	46.2%
	Biology	70	17.9%	21	5.4%	0	0.0%	301	76.8%
	Chemistry	10	23.8%	9	21.4%	0	0.0%	23	54.8%
	Clinical Lab Science	0	N/A	0	N/A	0	N/A	7	100.0%
	Computer Science	13	18.8%	10	14.5%	1	1.4%	45	65.2%
	Engineering Physics/ Physics	5	17.2%	3	10.3%	0	0.0%	21	72.4%
	Environmental Science	12	21.8%	6	10.9%	2	3.6%	35	63.6%
	Integrated Science	3	50.0%	0	0.0%	0	0.0%	3	50.0%
	Mathematics	29	21.0%	9	6.5%	1	0.7%	99	71.7%
	Nursing	86	20.4%	26	6.2%	5	1.2%	305	72.3%
	Matriculated- Undecided Major	23	36.5%	1	1.6%	0	0.0%	39	61.9%
UND	School & Major Undecided	111	32.1%	38	11.0%	2	0.6%	195	56.4%
		897	16.2%	589	10.6%	53	1.0%	3,997	72.2%

**By School, Primary Major and Primary Concentration Track, Matriculated Undergraduates, Fall 2010**

**Anisfield School of Business**

		<u>Count</u>	<u>Pct. of Major</u>
Business Administration	Finance	154	22.0%
	Management	221	31.6%
	Marketing	210	30.0%
	Unspecified	<u>114</u>	16.3%
		<b>699</b>	100.0%

**Contemporary Arts**

Communication Arts	Design & Interactive Media	90	20.4%
	Digital Filmmaking	63	14.3%
	Journalism	90	20.4%
	Media & Cinema Studies	79	17.9%
	Writing	46	10.4%
	Unspecified	<u>74</u>	16.7%
		<b>442</b>	100.0%

Music	Music Industry	38	35.2%
	Music Performance	10	33.3%
	Music Production	36	9.3%
	Music Studies	4	3.7%
	Unspecified	<u>20</u>	18.5%
		<b>108</b>	100.0%

Theater	Acting	30	45.5%
	Design/Technical Theater	10	15.2%
	Directing/Stage Management	6	9.1%
	Theater Studies	5	7.6%
	Unspecified	<u>15</u>	22.7%
		<b>66</b>	100.0%

Visual Arts	Art History	4	4.2%
	Art & Technology	8	8.3%
	Drawing / Painting	27	28.1%
	Photography	26	27.1%
	Sculpture	4	4.2%
	Unspecified	<u>27</u>	28.1%
		<b>96</b>	100.0%

**Social Science and Human Services**

		<u>Count</u>	<u>Pct. of Major</u>
Social Science	Community Mental Health	21	37.5%
	Criminology	2	3.6%
	Gender Studies	1	1.8%
	Labor Studies	1	1.8%
	Unspecified	<u>31</u>	55.4%
		<b>56</b>	100.0%

**Theoretical and Applied Science**

Allied Health	Diagnostic Medical Sonography	3	30.0%
	unspecified	<u>7</u>	70.0%
		<b>10</b>	100.0%
Clinical Lab Science	Medical Laboratory Science	2	28.6%
	unspecified	<u>5</u>	71.4%
		<b>7</b>	100.0%

Biology	Physician's Assistant	14	3.6%
	Physical Therapy	51	13.0%
	Dental	28	7.1%
	Optometry	4	1.0%
	Podiatry	2	0.5%
	Unspecified	<u>293</u>	74.7%
		<b>392</b>	100.0%

Nursing	RN/BSN	60	14.2%
	Generic BSN	<u>362</u>	85.8%
		<b>422</b>	100.0%

**Provisional Status by Major and Primary Concentration/Track within Major, Matriculated Undergraduates**

Primary Major and Concentration/Track	Officially Accepted Majors		Provisional Majors		Total Majors
	Number	Pct. of Total	Number	Pct. of Total	
Accounting	<b>213</b>	<b>69.2%</b>	<b>95</b>	<b>30.8%</b>	<b>308</b>
Business Admin. (Finance)	117	76.0%	37	24.0%	154
Business Admin. (Management)	162	73.3%	59	26.7%	221
Business Admin. (Marketing)	156	74.3%	54	25.7%	210
Business Admin. (Unspecified)	<u>57</u>	<u>50.0%</u>	<u>57</u>	<u>50.0%</u>	<u>114</u>
	<b>492</b>	<b>70.4%</b>	<b>207</b>	<b>29.6%</b>	<b>699</b>
Com. Art. (Design & Interactive Media)	90	100.0%	0	0.0%	90
Com. Art. (Digital Filmmaking)	63	100.0%	0	0.0%	63
Com. Art. (Journalism)	90	100.0%	0	0.0%	90
Com. Art. (Media & Cinema Studies)	79	100.0%	0	0.0%	79
Communication Arts (Writing)	46	100.0%	0	0.0%	46
Com. Art. (Unspecified)	<u>74</u>	<u>100.0%</u>	<u>0</u>	<u>0.0%</u>	<u>74</u>
	<b>442</b>	<b>100.0%</b>	<b>0</b>	<b>0.0%</b>	<b>442</b>
Economics	<b>11</b>	<b>52.4%</b>	<b>10</b>	<b>47.6%</b>	<b>21</b>
Information Systems	<b>42</b>	<b>79.2%</b>	<b>11</b>	<b>20.8%</b>	<b>53</b>
International Business	<b>45</b>	<b>73.8%</b>	<b>16</b>	<b>26.2%</b>	<b>61</b>
Nursing (RN/BSN)	60	100.0%	0	0.0%	60
Nursing (Generic BSN)	<u>362</u>	<u>100.0%</u>	<u>0</u>	<u>0.0%</u>	<u>362</u>
	<b>422</b>	<b>100.0%</b>	<b>0</b>	<b>0.0%</b>	<b>422</b>
Social Work	<b>153</b>	<b>100.0%</b>	<b>0</b>	<b>0.0%</b>	<b>153</b>
<b>Total</b>	<b>3,176</b>	<b>85.3%</b>	<b>546</b>	<b>14.7%</b>	<b>3,722</b>



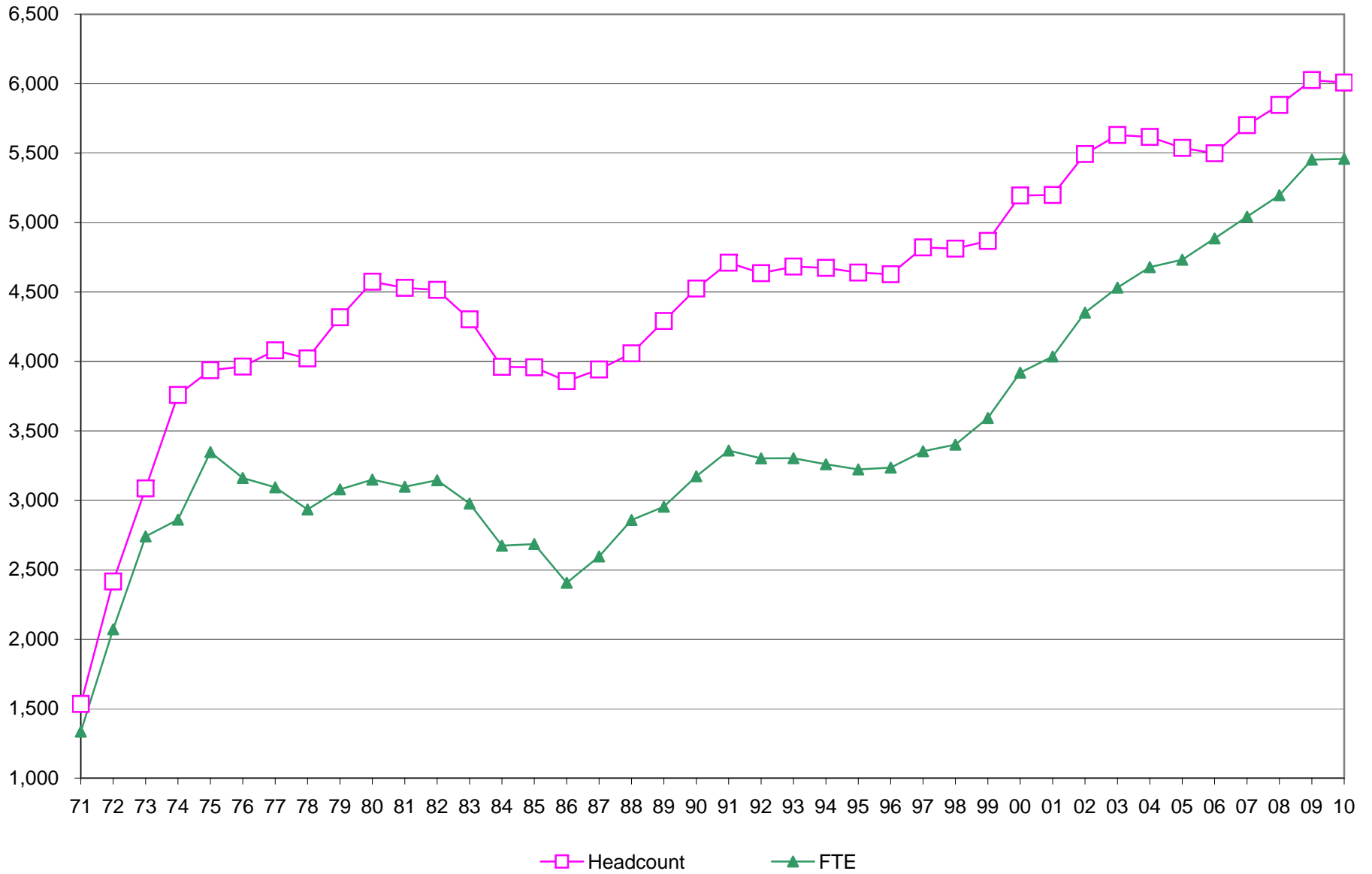
**By Certificate Program**

	Baccalaureate students		Post-baccalaureate students		All Students <sup>[1]</sup>	
Teacher Certification - Art	3	1.2%	4	4.1%	7	2.0%
Teacher Certification - Biology	11	4.3%	4	4.1%	15	4.2%
Teacher Certification - Business	3	1.2%	0	0.0%	3	0.8%
Teacher Certification - Chemistry	0	0.0%	2	2.1%	2	0.6%
Teacher Certification - Earth Science	5	1.9%	1	1.0%	6	1.7%
Teacher Certification - Elementary Education	123	47.9%	42	43.3%	165	46.6%
Teacher Certification - English	33	12.8%	15	15.5%	48	13.6%
Teacher Certification - Foreign Language/Spanish	10	3.9%	2	2.1%	12	3.4%
Teacher Certification - Mathematics	31	12.1%	2	2.1%	33	9.3%
Teacher Certification - Music	1	0.4%	2	2.1%	3	0.8%
Teacher Certification - Physics	1	0.4%	0	0.0%	1	0.3%
Teacher Certification - Social Studies	32	12.5%	16	16.5%	48	13.6%
Teacher Certifications - multiple programs	4	1.6%	2	2.1%	6	1.7%
Teacher Certification - general	0	0.0%	5	5.2%	5	1.4%
<b>TOTAL</b>	<b>257</b>		<b>97</b>		<b>354</b>	

[1] Includes Major1 and Major2.

Year	HEADCOUNT			FTE		
	Total Headcount	Percent Change From Previous Fall Semester	Cumulative Percent Change From Fall 1971	Total FTE	Percent Change From Previous Fall Semester	Cumulative Percent Change From Fall 1971
1971	1,533	N/A	0.0%	1,334	N/A	0.0%
1972	2,416	57.6%	57.6%	2,071	55.2%	55.2%
1973	3,086	27.7%	101.3%	2,740	32.3%	105.4%
1974	3,759	21.8%	145.2%	2,861	4.4%	114.5%
1975	3,937	4.7%	156.8%	3,347	17.0%	150.9%
1976	3,963	0.7%	158.5%	3,161	-5.6%	137.0%
1977	4,080	3.0%	166.1%	3,094	-2.1%	131.9%
1978	4,022	-1.4%	162.4%	2,934	-5.2%	119.9%
1979	4,318	7.4%	181.7%	3,079	4.9%	130.8%
1980	4,574	5.9%	198.4%	3,149	2.3%	136.1%
1981	4,530	-1.0%	195.5%	3,098	-1.6%	132.2%
1982	4,515	-0.3%	194.5%	3,145	1.5%	135.8%
1983	4,303	-4.7%	180.7%	2,977	-5.3%	123.2%
1984	3,961	-7.9%	158.4%	2,674	-10.2%	100.4%
1985	3,958	-0.1%	158.2%	2,685	0.4%	101.3%
1986	3,858	-2.5%	151.7%	2,406	-10.4%	80.4%
1987	3,942	2.2%	157.1%	2,596	7.9%	94.6%
1988	4,058	2.9%	164.7%	2,858	10.1%	114.2%
1989	4,291	5.7%	179.9%	2,954	3.4%	121.4%
1990	4,525	5.5%	195.2%	3,173	7.4%	137.9%
1991	4,711	4.1%	207.3%	3,359	5.9%	151.8%
1992	4,636	-1.6%	202.4%	3,302	-1.7%	147.5%
1993	4,683	1.0%	205.5%	3,303	0.0%	147.6%
1994	4,674	-0.2%	204.9%	3,260	-1.3%	144.4%
1995	4,640	-0.7%	202.7%	3,223	-1.1%	141.6%
1996	4,628	-0.3%	201.9%	3,236	0.4%	142.6%
1997	4,821	4.2%	214.5%	3,353	3.6%	151.3%
1998	4,812	-0.2%	213.9%	3,401	1.4%	154.9%
1999	4,868	1.2%	217.5%	3,593	5.6%	169.3%
2000	5,195	6.7%	238.9%	3,920	9.1%	193.9%
2001	5,199	0.1%	239.1%	4,036	3.0%	202.5%
2002	5,494	5.7%	258.4%	4,352	7.8%	226.2%
2003	5,631	2.5%	267.3%	4,532	4.1%	239.7%
2004	5,617	-0.2%	266.4%	4,679	3.2%	250.7%
2005	5,538	-1.4%	261.3%	4,733	1.2%	254.8%
2006	5,499	-0.7%	258.7%	4,886	3.2%	266.3%
2007	5,702	3.7%	272.0%	5,043	3.2%	278.0%
2008	5,847	2.5%	281.4%	5,197	3.1%	289.6%
2009	6,026	3.1%	293.1%	5,453	4.9%	308.8%
2010	6,008	-0.3%	291.9%	5,459	0.1%	309.2%

### TOTAL ENROLLMENT, FALL 1971 TO FALL 2010



TOTAL FALL 2010 ENROLLMENT = 6,008

Year	Undergraduate Headcount			Undergraduate FTE			Graduate Headcount			Graduate FTE		
	Total Undergrad Headcount	Percent Change From Previous Fall Semester	Cumulative Percent Change From Fall 1971	Total Undergrad FTE	Percent Change From Previous Fall Semester	Cumulative Percent Change From Fall 1971	Graduate Headcount	Percent Change From Previous Fall Semester	Cumulative Percent Change From Fall 1995	Total Graduate FTE	Percent Change From Previous Fall Semester	Cumulative Percent Change From Fall 1995
1971	1,533	N/A	0.0%	1,334	N/A	0.0%	-	-	-	-	-	-
1972	2,416	57.6%	57.6%	2,071	55.2%	55.2%	-	-	-	-	-	-
1973	3,086	27.7%	101.3%	2,740	32.3%	105.4%	-	-	-	-	-	-
1974	3,759	21.8%	145.2%	2,861	4.4%	114.5%	-	-	-	-	-	-
1975	3,937	4.7%	156.8%	3,347	17.0%	150.9%	-	-	-	-	-	-
1976	3,963	0.7%	158.5%	3,161	-5.6%	137.0%	-	-	-	-	-	-
1977	4,080	3.0%	166.1%	3,094	-2.1%	131.9%	-	-	-	-	-	-
1978	4,022	-1.4%	162.4%	2,934	-5.2%	119.9%	-	-	-	-	-	-
1979	4,318	7.4%	181.7%	3,079	4.9%	130.8%	-	-	-	-	-	-
1980	4,574	5.9%	198.4%	3,149	2.3%	136.1%	-	-	-	-	-	-
1981	4,530	-1.0%	195.5%	3,098	-1.6%	132.2%	-	-	-	-	-	-
1982	4,515	-0.3%	194.5%	3,145	1.5%	135.8%	-	-	-	-	-	-
1983	4,303	-4.7%	180.7%	2,977	-5.3%	123.2%	-	-	-	-	-	-
1984	3,961	-7.9%	158.4%	2,674	-10.2%	100.4%	-	-	-	-	-	-
1985	3,958	-0.1%	158.2%	2,685	0.4%	101.3%	-	-	-	-	-	-
1986	3,858	-2.5%	151.7%	2,406	-10.4%	80.4%	-	-	-	-	-	-
1987	3,942	2.2%	157.1%	2,596	7.9%	94.6%	-	-	-	-	-	-
1988	4,058	2.9%	164.7%	2,858	10.1%	114.2%	-	-	-	-	-	-
1989	4,291	5.7%	179.9%	2,954	3.4%	121.4%	-	-	-	-	-	-
1990	4,525	5.5%	195.2%	3,173	7.4%	137.9%	-	-	-	-	-	-
1991	4,711	4.1%	207.3%	3,359	5.9%	151.8%	-	-	-	-	-	-
1992	4,636	-1.6%	202.4%	3,302	-1.7%	147.5%	-	-	-	-	-	-
1993	4,683	1.0%	205.5%	3,303	0.0%	147.6%	-	-	-	-	-	-
1994	4,674	-0.2%	204.9%	3,260	-1.3%	144.4%	-	-	-	-	-	-
1995	4,543	-2.8%	196.3%	3,176	-2.6%	138.1%	97	N/A	0.0%	47	N/A	0.0%
1996	4,526	-0.4%	195.2%	3,193	0.5%	139.4%	102	5.2%	5.2%	43	-8.5%	-8.5%
1997	4,681	3.4%	205.3%	3,287	2.9%	146.4%	140	37.3%	44.3%	66	53.5%	40.4%
1998	4,658	-0.5%	203.8%	3,350	1.9%	151.1%	154	10.0%	58.8%	51	-22.7%	8.5%
1999	4,655	-0.1%	203.7%	3,508	4.7%	163.0%	213	38.3%	119.6%	85	66.7%	80.9%
2000	4,906	5.4%	220.0%	3,805	8.5%	185.2%	289	35.7%	197.9%	115	35.3%	144.7%
2001	4,890	-0.3%	219.0%	3,918	3.0%	193.7%	309	6.9%	218.6%	118	2.6%	151.1%
2002	5,143	5.2%	235.5%	4,215	7.6%	216.0%	351	13.6%	261.9%	137	16.1%	191.5%
2003	5,242	1.9%	241.9%	4,378	3.9%	228.2%	389	10.8%	301.0%	154	12.4%	227.7%
2004	5,278	0.7%	244.3%	4,536	3.6%	240.0%	339	-12.9%	249.5%	143	-7.1%	204.3%
2005	5,233	-0.9%	241.4%	4,606	1.5%	245.3%	305	-10.0%	214.4%	127	-11.2%	170.2%
2006	5,188	-0.9%	238.4%	4,768	3.5%	257.4%	311	2.0%	220.6%	118	-7.1%	151.1%
2007	5,393	4.0%	251.8%	4,919	3.2%	268.7%	309	-0.6%	218.6%	124	5.1%	163.8%
2008	5,561	3.1%	262.8%	5,085	3.4%	281.2%	286	-7.4%	194.8%	112	-9.7%	138.3%
2009	5,776	3.9%	276.8%	5,353	5.3%	301.3%	250	-12.6%	157.7%	100	-10.7%	112.8%
2010	5,796	0.3%	278.1%	5,367	0.3%	302.3%	212	-15.2%	118.6%	92	-8.0%	95.7%

**ENROLLMENT TRENDS FOR NEW, TRANSFER, READMITTED, CONTINUING, AND NONDEGREE STUDENTS  
COMBINED UNDERGRADUATE AND GRADUATE, FALL 2006 TO FALL 2010**

	2006		2007		2008		2009		2010		Percent Change 06 to 10	Percent Change 09 to 10
	No.	Pct.	No.	Pct.	No.	Pct.	No.	Pct.	No.	Pct.		
First-time Undergraduates	814	14.8%	902	15.8%	880	15.1%	937	15.5%	897	14.9%	10.2%	-4.3%
First-time Graduate Students	<u>58</u>	<u>1.1%</u>	<u>79</u>	<u>1.4%</u>	<u>64</u>	<u>1.1%</u>	<u>26</u>	<u>0.4%</u>	<u>49</u>	<u>0.8%</u>	-15.5%	88.5%
<i>Subtotal: First-time</i>	872	15.9%	981	17.2%	944	16.1%	963	16.0%	946	15.7%	8.5%	-1.8%
Undergraduate Transfers [1]	610	11.1%	616	10.8%	621	10.6%	608	10.1%	589	9.8%	-3.4%	-3.1%
Graduate Transfers	<u>0</u>	<u>0.0%</u>	<u>0</u>	<u>0.0%</u>	<u>0</u>	<u>0.0%</u>	<u>0</u>	<u>0.0%</u>	<u>0</u>	<u>0.0%</u>	N/A	N/A
<i>Subtotal: Transfers</i>	610	11.1%	616	10.8%	621	10.6%	608	10.1%	589	9.8%	-3.4%	-3.1%
Undergraduate Readmits [2]	59	1.1%	68	1.2%	55	0.9%	47	0.8%	53	0.9%	-10.2%	12.8%
Graduate Readmits	<u>0</u>	<u>0.0%</u>	<u>0</u>	<u>0.0%</u>	<u>6</u>	<u>0.1%</u>	<u>3</u>	<u>0.0%</u>	<u>2</u>	<u>0.0%</u>	N/A	-33.3%
<i>Subtotal: Readmits</i>	59	1.1%	68	1.2%	61	1.0%	50	0.8%	55	0.9%	-6.8%	10.0%
Undergraduate Continuing [3]	3,423	62.2%	3,528	61.9%	3,728	63.8%	3,937	65.3%	3,997	66.5%	16.8%	1.5%
Graduate Continuing	<u>136</u>	<u>2.5%</u>	<u>154</u>	<u>2.7%</u>	<u>155</u>	<u>2.7%</u>	<u>184</u>	<u>3.1%</u>	<u>135</u>	<u>2.2%</u>	-0.7%	-26.6%
<i>Subtotal: Continuing</i>	3,559	64.7%	3,682	64.6%	3,883	66.4%	4,121	68.4%	4,132	68.8%	16.1%	0.3%
UG Nondegree - New <sup>[4]</sup>	165	3.0%	205	3.6%	214	3.7%	184	3.1%	153	2.5%	-7.3%	-16.8%
UG Nondegree - Continuing	117	2.1%	74	1.3%	63	1.1%	63	1.0%	107	1.8%	-8.5%	69.8%
Grad Nondegree - New	21	0.4%	34	0.6%	47	0.8%	25	0.4%	14	0.2%	-33.3%	-44.0%
Grad Nondegree - Continuing	<u>96</u>	<u>1.7%</u>	<u>42</u>	<u>0.7%</u>	<u>14</u>	<u>0.2%</u>	<u>12</u>	<u>0.2%</u>	<u>12</u>	<u>0.2%</u>	-87.5%	0.0%
<i>Subtotal: Nondegree</i>	399	7.3%	355	6.2%	338	5.8%	284	4.7%	286	4.8%	-28.3%	0.7%
<b>TOTAL</b>	<b>5,499</b>		<b>5,702</b>		<b>5,847</b>		<b>6,026</b>		<b>6,008</b>		<b>9.3%</b>	<b>-0.3%</b>

[1] Excludes "stop-outs" (students absent for only one semester who need not apply for formal readmission) and "internal transfers" (students who change from nondegree-seeking to degree-seeking status and have registration type "Ramapo Non-Matriculant").

[2] Excludes "stop-outs" and "internal transfers."

[3] Includes "stop-outs" and "internal transfers."

[4] Includes Pre-Matics, Non-Matics, Innovative Programs and Special Programs.

**ENROLLMENT BY AGE, FALL 2006 TO FALL 2010**

Undergraduate Students	Fall 2006		Fall 2007		Fall 2008		Fall 2009		Fall 2010		Pct. Change 06 to 10	Pct. Change 09 to 10
	No.	Pct.	No.	Pct.	No.	Pct.	No.	Pct.	No.	Pct.		
Less Than 20	1,463	28.2%	1,617	30.0%	1,666	30.0%	1,689	29.2%	1,681	29.0%	14.9%	-0.5%
20 to 24	2,953	56.9%	3,070	56.9%	3,219	57.9%	3,444	59.6%	3,509	60.5%	18.8%	1.9%
25 to 29	310	6.0%	303	5.6%	314	5.6%	274	4.7%	287	5.0%	-7.4%	4.7%
30 to 39	219	4.2%	193	3.6%	168	3.0%	177	3.1%	139	2.4%	-36.5%	-21.5%
40 and Over	243	4.7%	210	3.9%	194	3.5%	192	3.3%	180	3.1%	-25.9%	-6.3%
Missing	0	N/A	0	N/A	0	N/A	N/A	N/A	N/A	N/A	N/A	N/A
<b>Total</b>	<b>5,188</b>		<b>5,393</b>		<b>5,561</b>		<b>5,776</b>		<b>5,796</b>		<b>11.7%</b>	<b>0.3%</b>

Graduate Students	Fall 2006		Fall 2007		Fall 2008		Fall 2009		Fall 2010		Pct. Change 06 to 10	Pct. Change 09 to 10
	No.	Pct.	No.	Pct.	No.	Pct.	No.	Pct.	No.	Pct.		
Less Than 20	0	0.0%	0	0.0%	0	0.0%	0	0.0%	1	0.5%	N/A	N/A
20 to 24	19	6.1%	20	6.5%	20	7.0%	27	10.8%	21	9.9%	10.5%	-22.2%
25 to 29	91	29.4%	77	24.9%	75	26.2%	75	30.0%	70	33.0%	-23.1%	-6.7%
30 to 39	72	23.2%	83	26.9%	81	28.3%	53	21.2%	46	21.7%	-36.1%	-13.2%
40 and Over	128	41.3%	129	41.7%	110	38.5%	95	38.0%	74	34.9%	-42.2%	-22.1%
Missing	1	N/A	0	N/A	0	N/A	0	N/A	N/A	N/A	N/A	N/A
<b>Total</b>	<b>311</b>		<b>309</b>		<b>286</b>		<b>250</b>		<b>212</b>		<b>-31.8%</b>	<b>-15.2%</b>

All Students	Fall 2006		Fall 2007		Fall 2008		Fall 2009		Fall 2010		Pct. Change 06 to 10	Pct. Change 09 to 10
	No.	Pct.	No.	Pct.	No.	Pct.	No.	Pct.	No.	Pct.		
Less Than 20	1,463	26.6%	1,617	28.4%	1,666	28.5%	1,689	28.0%	1,682	28.0%	15.0%	-0.4%
20 to 24	2,972	54.1%	3,090	54.2%	3,239	55.4%	3,471	57.6%	3,530	58.8%	18.8%	1.7%
25 to 29	401	7.3%	380	6.7%	389	6.7%	349	5.8%	357	5.9%	-11.0%	2.3%
30 to 39	291	5.3%	276	4.8%	249	4.3%	230	3.8%	185	3.1%	-36.4%	-19.6%
40 and Over	371	6.7%	339	5.9%	304	5.2%	287	4.8%	254	4.2%	-31.5%	-11.5%
Missing	1	N/A	0	N/A	0	N/A	0	N/A	0	N/A	N/A	N/A
<b>Total</b>	<b>5,499</b>		<b>5,702</b>		<b>5,847</b>		<b>6,026</b>		<b>6,008</b>		<b>9.3%</b>	<b>-0.3%</b>

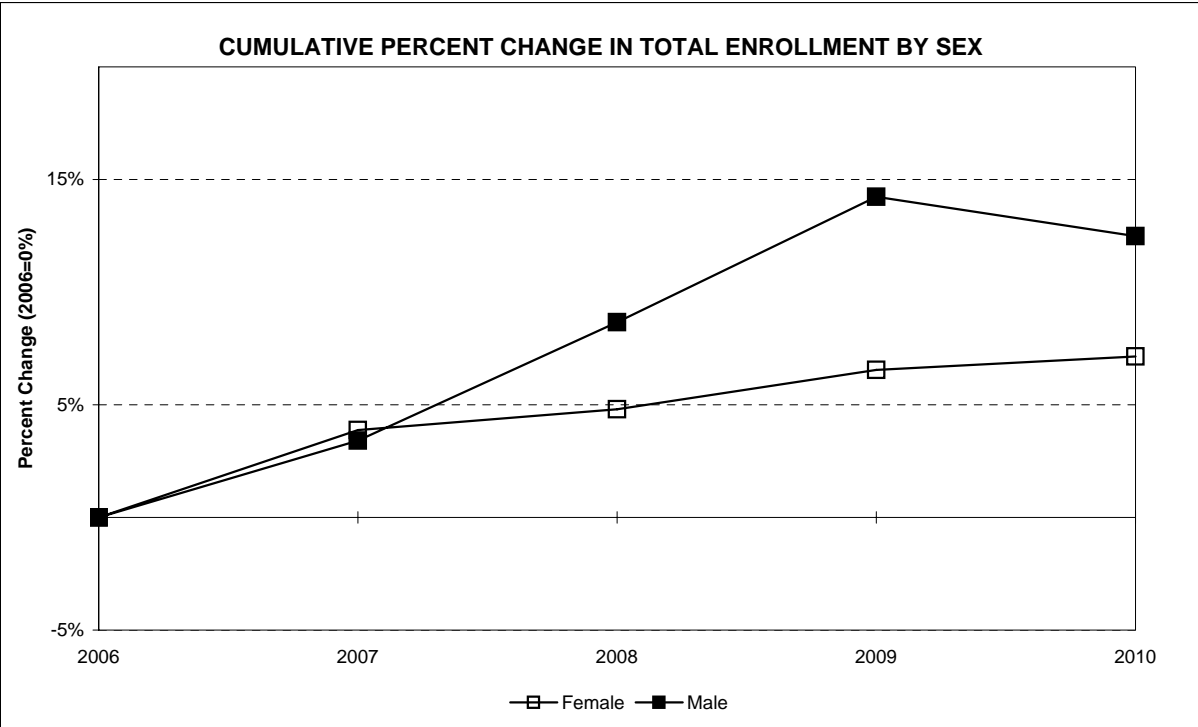
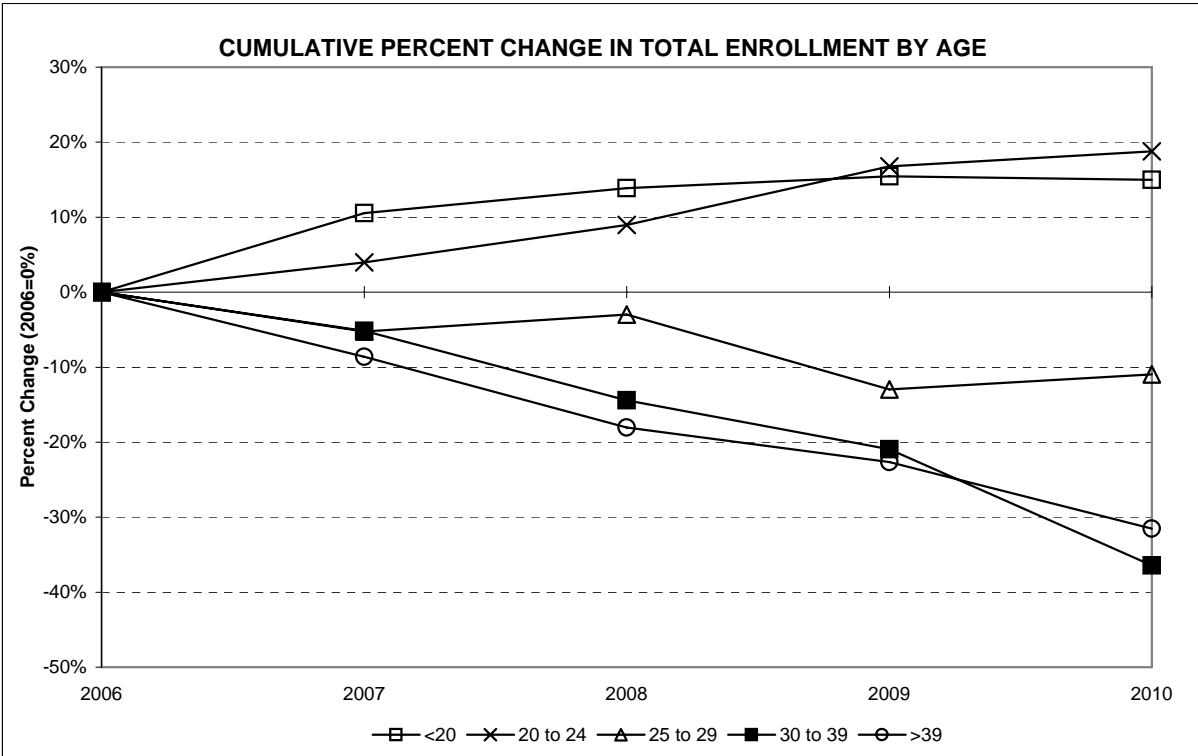


**ENROLLMENT BY SEX, FALL 2006 TO FALL 2010**

Undergraduate Students	Fall 2006		Fall 2007		Fall 2008		Fall 2009		Fall 2010		Pct. Change 06 to 10	Pct. Change 09 to 10
	No.	Pct.	No.	Pct.	No.	Pct.	No.	Pct.	No.	Pct.		
Female	3,088	59.5%	3,222	59.7%	3,271	58.8%	3,356	58.1%	3,407	58.8%	10.3%	1.5%
Male	2,100	40.5%	2,171	40.3%	2,290	41.2%	2,420	41.9%	2,389	41.2%	13.8%	-1.3%
<b>Total</b>	<b>5,188</b>		<b>5,393</b>		<b>5,561</b>		<b>5,776</b>		<b>5,796</b>		<b>11.7%</b>	<b>0.3%</b>

Graduate Students	Fall 2006		Fall 2007		Fall 2008		Fall 2009		Fall 2010		Pct. Change 06 to 10	Pct. Change 09 to 10
	No.	Pct.	No.	Pct.	No.	Pct.	No.	Pct.	No.	Pct.		
Female	240	77.2%	235	76.1%	217	75.9%	190	76.0%	159	75.0%	-33.8%	-16.3%
Male	71	22.8%	74	23.9%	69	24.1%	60	24.0%	53	25.0%	-25.4%	-11.7%
<b>Total</b>	<b>311</b>		<b>309</b>		<b>286</b>		<b>250</b>		<b>212</b>		<b>-31.8%</b>	<b>-15.2%</b>

All Students	Fall 2006		Fall 2007		Fall 2008		Fall 2009		Fall 2010		Pct. Change 06 to 10	Pct. Change 09 to 10
	No.	Pct.	No.	Pct.	No.	Pct.	No.	Pct.	No.	Pct.		
Female	3,328	60.5%	3,457	60.6%	3,488	59.7%	3,546	58.8%	3,566	59.4%	7.2%	0.6%
Male	2,171	39.5%	2,245	39.4%	2,359	40.3%	2,480	41.2%	2,442	40.6%	12.5%	-1.5%
<b>Total</b>	<b>5,499</b>		<b>5,702</b>		<b>5,847</b>		<b>6,026</b>		<b>6,008</b>		<b>9.3%</b>	<b>-0.3%</b>



**ENROLLMENT BY ETHNICITY, FALL 2006 TO FALL 2010**

Undergraduate Students	Fall 2006		Fall 2007		Fall 2008		Fall 2009		Fall 2010		Pct. Change 06 to 10	Pct. Change 09 to 10
	No.	Pct.	No.	Pct.	No.	Pct.	No.	Pct.	No.	Pct.		
Hispanic/Latino, Any Race	431	8.3%	469	8.7%	491	8.8%	517	9.2%	602	10.7%	39.7%	16.4%
Am. Indian/Nat. Alaskan, non-Hispanic	16	0.3%	16	0.3%	16	0.3%	21	0.4%	11	0.2%	-31.3%	-47.6%
Asian, non-Hispanic [1]	257	5.0%	265	4.9%	291	5.2%	298	5.3%	261	4.6%	N/A	N/A
Hawaiian/Pacific Islander, non-Hispanic [1]	--	0.0%	--	0.0%	--	0.0%	--	0.0%	25	0.4%	N/A	N/A
Black, non-Hispanic	332	6.4%	338	6.3%	356	6.4%	322	5.7%	267	4.7%	-19.6%	-17.1%
White, non-Hispanic	4,152	80.0%	4,305	79.8%	4,396	79.2%	4,470	79.4%	4,410	78.1%	6.2%	-1.3%
Multiple Races, non-Hispanic [1]	--	0.0%	--	0.0%	--	0.0%	--	0.0%	73	1.3%	N/A	N/A
Missing	0	N/A	0	N/A	11	N/A	148	N/A	147	N/A	N/A	N/A
<b>Total</b>	<b>5,188</b>	<b>100.0%</b>	<b>5,393</b>	<b>100.0%</b>	<b>5,561</b>	<b>100.0%</b>	<b>5,776</b>	<b>100.0%</b>	<b>5,796</b>	<b>100.0%</b>	<b>11.7%</b>	<b>0.3%</b>

Graduate Students	Fall 2006		Fall 2007		Fall 2008		Fall 2009		Fall 2010		Pct. Change 06 to 10	Pct. Change 09 to 10
	No.	Pct.	No.	Pct.	No.	Pct.	No.	Pct.	No.	Pct.		
Hispanic/Latino, Any Race	7	2.3%	11	3.6%	11	3.8%	9	3.6%	11	5.4%	57.1%	22.2%
Am. Indian/Nat. Alaskan, non-Hispanic	0	0.0%	0	0.0%	0	0.0%	0	0.0%	1	0.5%	N/A	N/A
Asian, non-Hispanic [1]	12	3.9%	7	2.3%	4	1.4%	6	2.4%	6	2.9%	N/A	N/A
Hawaiian/Pacific Islander, non-Hispanic [1]	--	0.0%	--	0.0%	--	0.0%	--	0.0%	0	0.0%	N/A	N/A
Black, non-Hispanic	18	5.8%	16	5.2%	10	3.5%	14	5.7%	8	3.9%	-55.6%	-42.9%
White, non-Hispanic	274	88.1%	275	89.0%	261	91.3%	218	88.3%	178	86.9%	-35.0%	-18.3%
Multiple Races, non-Hispanic [1]	--	0.0%	--	0.0%	--	0.0%	--	0.0%	1	0.5%	N/A	N/A
Missing	0	N/A	0	N/A	0	N/A	3	N/A	7	N/A	N/A	N/A
<b>Total</b>	<b>311</b>	<b>100.0%</b>	<b>309</b>	<b>100.0%</b>	<b>286</b>	<b>100.0%</b>	<b>250</b>	<b>100.0%</b>	<b>212</b>	<b>100.0%</b>	<b>-31.8%</b>	<b>-15.2%</b>

All Students	Fall 2006		Fall 2007		Fall 2008		Fall 2009		Fall 2010		Pct. Change 06 to 10	Pct. Change 09 to 10
	No.	Pct.	No.	Pct.	No.	Pct.	No.	Pct.	No.	Pct.		
Hispanic/Latino, Any Race	438	8.0%	480	8.4%	502	8.6%	526	9.0%	613	10.5%	40.0%	16.5%
Am. Indian/Nat. Alaskan, non-Hispanic	16	0.3%	16	0.3%	16	0.3%	21	0.4%	12	0.2%	-25.0%	-42.9%
Asian, non-Hispanic [1]	269	4.9%	272	4.8%	295	5.1%	304	5.2%	267	4.6%	N/A	N/A
Hawaiian/Pacific Islander, non-Hispanic [1]	0	0.0%	0	0.0%	0	0.0%	0	0.0%	25	0.4%	N/A	N/A
Black, non-Hispanic	350	6.4%	354	6.2%	366	6.3%	336	5.7%	275	4.7%	-21.4%	-18.2%
White, non-Hispanic	4,426	80.5%	4,580	80.3%	4,657	79.8%	4,688	79.8%	4,588	78.4%	3.7%	-2.1%
Multiple Races, non-Hispanic [1]	0	0.0%	0	0.0%	0	0.0%	0	0.0%	74	1.3%	N/A	N/A
Missing	0	N/A	0	N/A	11	N/A	151	N/A	154	N/A	N/A	N/A
<b>Total</b>	<b>5,499</b>	<b>100.0%</b>	<b>5,702</b>	<b>100.0%</b>	<b>5,847</b>	<b>100.0%</b>	<b>6,026</b>	<b>100.0%</b>	<b>6,008</b>	<b>100.0%</b>	<b>9.3%</b>	<b>-0.3%</b>



**ENROLLMENT BY STATE OF ORIGIN, FALL 2006 TO FALL 2010**

Undergraduate Students	Fall 2006		Fall 2007		Fall 2008		Fall 2009		Fall 2010		Pct. Change 06 to 10	Pct. Change 09 to 10
	No.	Pct.	No.	Pct.	No.	Pct.	No.	Pct.	No.	Pct.		
New Jersey	4,686	90.3%	4,918	91.2%	5,090	91.6%	5,379	93.2%	5,468	94.4%	16.7%	1.7%
New York	294	5.7%	291	5.4%	265	4.8%	230	4.0%	194	3.3%	-34.0%	-15.7%
Other U.S. State/Terr.	42	0.8%	33	0.6%	46	0.8%	38	0.7%	45	0.8%	7.1%	18.4%
Foreign Country	166	3.2%	149	2.8%	158	2.8%	125	2.2%	86	1.5%	-48.2%	-31.2%
Missing	0	N/A	2	N/A	2	N/A	4	N/A	3	N/A	N/A	N/A
<b>Total</b>	<b>5,188</b>		<b>5,393</b>		<b>5,561</b>		<b>5,776</b>		<b>5,796</b>		<b>11.7%</b>	<b>0.3%</b>

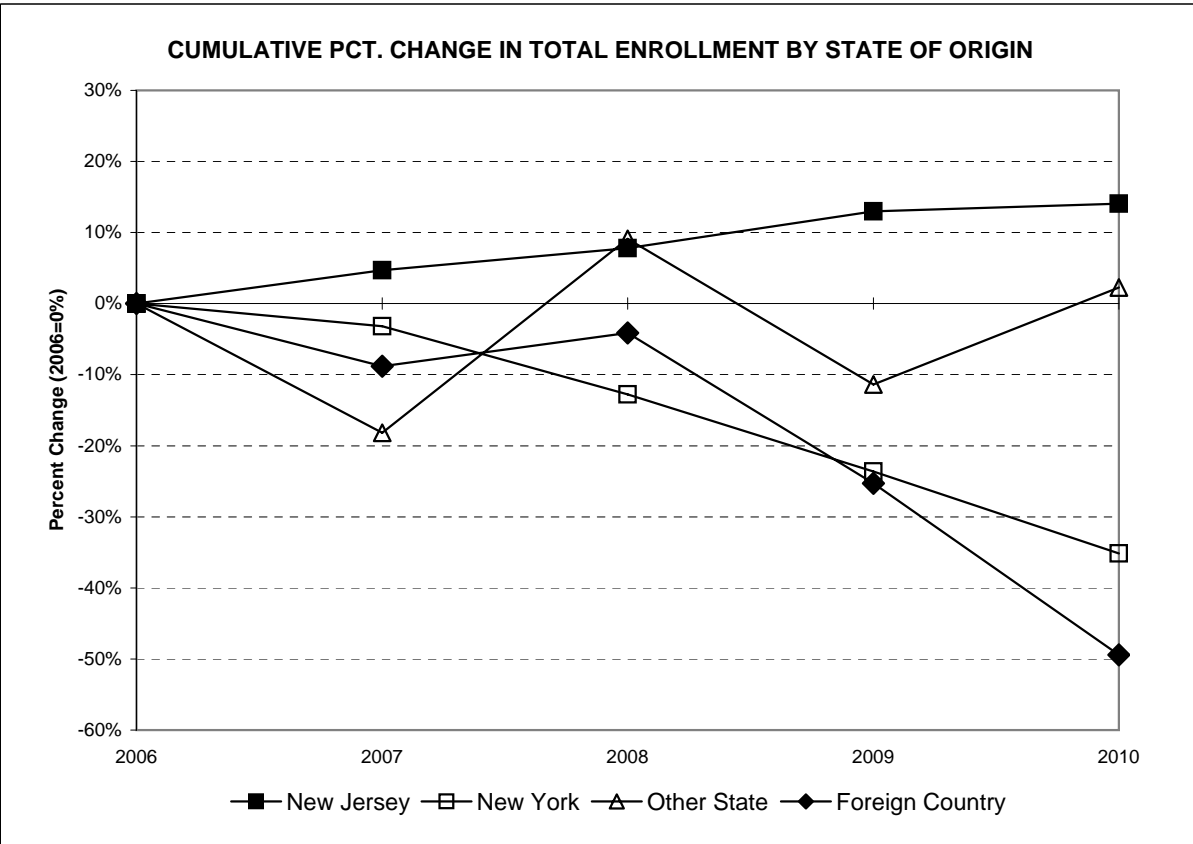
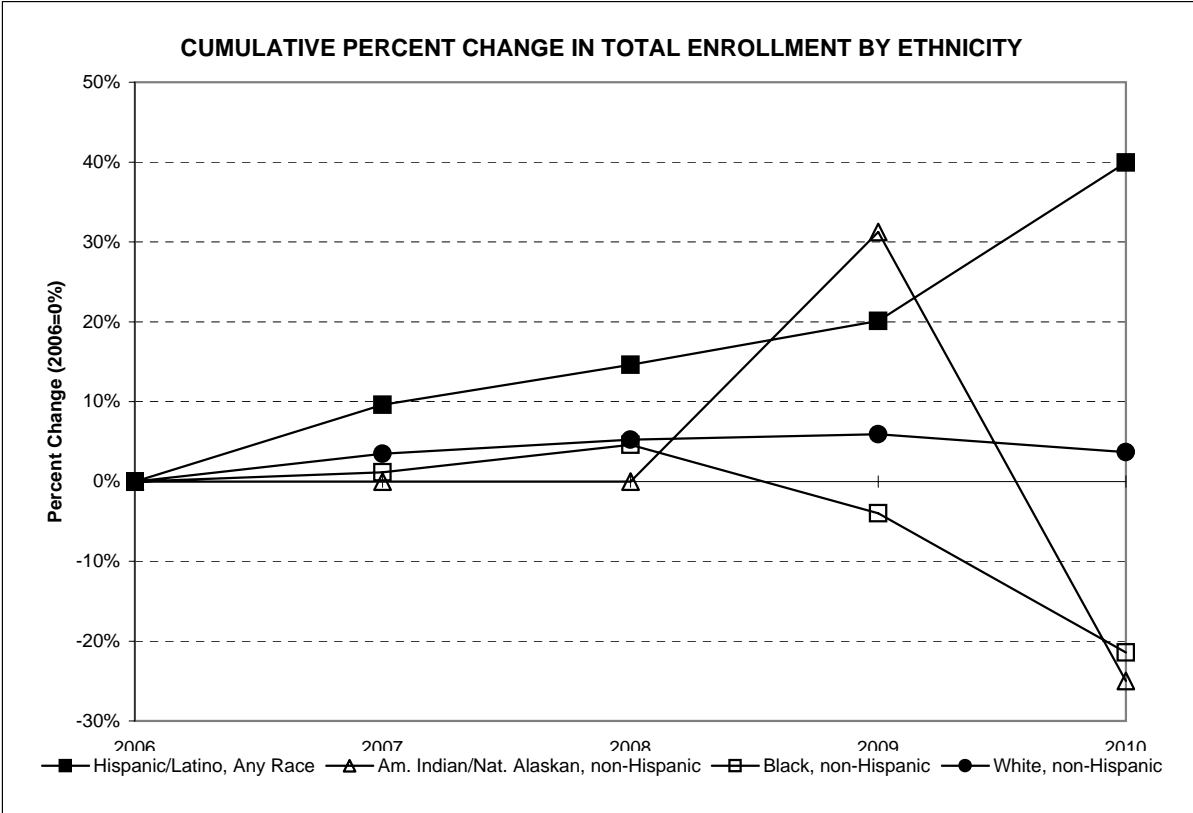
Graduate Students	Fall 2006		Fall 2007		Fall 2008		Fall 2009		Fall 2010		Pct. Change 06 to 10	Pct. Change 09 to 10
	No.	Pct.	No.	Pct.	No.	Pct.	No.	Pct.	No.	Pct.		
New Jersey	286	92.0%	288	93.2%	271	94.8%	238	95.2%	203	95.8%	-29.0%	-14.7%
New York	19	6.1%	12	3.9%	8	2.8%	9	3.6%	9	4.2%	-52.6%	0.0%
Other U.S. State/Terr.	2	0.6%	3	1.0%	2	0.7%	1	0.4%	0	0.0%	-100.0%	-100.0%
Foreign Country	4	1.3%	6	1.9%	5	1.7%	2	0.8%	0	0.0%	-100.0%	-100.0%
Missing	0	N/A	0	N/A	0	N/A	0	N/A	0	N/A	N/A	N/A
<b>Total</b>	<b>311</b>		<b>309</b>		<b>286</b>		<b>250</b>		<b>212</b>		<b>-31.8%</b>	<b>-15.2%</b>

All Students	Fall 2006		Fall 2007		Fall 2008		Fall 2009		Fall 2010		Pct. Change 06 to 10	Pct. Change 09 to 10
	No.	Pct.	No.	Pct.	No.	Pct.	No.	Pct.	No.	Pct.		
New Jersey	4,972	90.4%	5,206	91.3%	5,361	91.7%	5,617	93.3%	5,671	94.4%	14.1%	1.0%
New York	313	5.7%	303	5.3%	273	4.7%	239	4.0%	203	3.4%	-35.1%	-15.1%
Other U.S. State/Terr.	44	0.8%	36	0.6%	48	0.8%	39	0.6%	45	0.7%	2.3%	15.4%
Foreign Country	170	3.1%	155	2.7%	163	2.8%	127	2.1%	86	1.4%	-49.4%	-32.3%
Missing	0	N/A	2	N/A	2	N/A	4	N/A	3	N/A	N/A	N/A
<b>Total</b>	<b>5,499</b>		<b>5,702</b>		<b>5,847</b>		<b>6,026</b>		<b>6,008</b>		<b>9.3%</b>	<b>-0.3%</b>

[1] New Race/Ethnicity categories came into effect in AY09-10 (as listed above). Until at least two years' data is collected, we can not calculate the percent change for three of the new non-Hispanic categories. The categories for Asian, Hawaiian/Pacific Islander, and Multiple-Races do not have prior data according to the new definitions. Prior to fall 2010, the counts above for "Asian, non-Hispanic" were formerly grouped together as "Asian or Pacific Islander."

revised 3/16/11 for ethnicity percentages





**ENROLLMENT BY ETHNICITY AND CITIZENSHIP, FALL 2006 TO FALL 2010**

Undergraduate Students	Fall 2006		Fall 2007		Fall 2008		Fall 2009		Fall 2010		Pct. Change 06 to 10	Pct. Change 09 to 10
	No.	Pct.	No.	Pct.	No.	Pct.	No.	Pct.	No.	Pct.		
Hispanic/Latino, Any Race	419	8.1%	462	8.6%	477	8.6%	508	9.0%	601	10.6%	43.4%	18.3%
Am. Indian/Native Alaskan, non-Hispanic	16	0.3%	16	0.3%	16	0.3%	21	0.4%	11	0.2%	-31.3%	-47.6%
Asian, non-Hispanic [1]	219	4.2%	229	4.2%	260	4.7%	277	4.9%	241	4.3%	N/A	N/A
Hawaiian/Pacific Islander, non-Hispanic [1]	--	--	--	--	--	--	--	--	25	0.4%	N/A	N/A
Black, non-Hispanic	307	5.9%	314	5.8%	340	6.1%	304	5.4%	258	4.6%	-16.0%	-15.1%
White, non-Hispanic	4,061	78.3%	4,223	78.3%	4,299	77.5%	4,397	78.1%	4,363	77.1%	7.4%	-0.8%
Multiple Races, non-Hispanic [1]	--	0.0%	--	0.0%	--	0.0%	--	--	72	1.3%	N/A	N/A
Nonresident Alien	166	3.2%	149	2.8%	158	2.8%	125	2.2%	86	1.5%	-48.2%	-31.2%
Missing	0	N/A	0	N/A	11	N/A	144	N/A	139	N/A	N/A	N/A
<b>Total</b>	<b>5,188</b>	<b>100.0%</b>	<b>5,393</b>	<b>100.0%</b>	<b>5,561</b>	<b>100.0%</b>	<b>5,776</b>	<b>100.0%</b>	<b>5,796</b>	<b>100.0%</b>	<b>11.7%</b>	<b>0.3%</b>

Graduate Students	Fall 2005		Fall 2006		Fall 2007		Fall 2008		Fall 2010		Pct. Change 06 to 10	Pct. Change 09 to 10
	No.	Pct.	No.	Pct.	No.	Pct.	No.	Pct.	No.	Pct.		
Hispanic/Latino, Any Race	7	2.3%	11	3.6%	11	3.8%	9	3.6%	11	5.4%	57.1%	22.2%
Am. Indian/Native Alaskan, non-Hispanic	0	0.0%	0	0.0%	0	0.0%	0	0.0%	1	0.5%	N/A	N/A
Asian, non-Hispanic [1]	11	3.5%	6	1.9%	3	1.0%	6	2.4%	6	2.9%	N/A	N/A
Hawaiian/Pacific Islander, non-Hispanic [1]	--	0.0%	--	0.0%	--	0.0%	--	0.0%	0	0.0%	N/A	N/A
Black, non-Hispanic	18	5.8%	16	5.2%	10	3.5%	14	5.7%	8	3.9%	-55.6%	-42.9%
White, non-Hispanic	271	87.1%	270	87.4%	257	89.9%	216	87.4%	178	86.8%	-34.3%	-17.6%
Multiple Races, non-Hispanic [1]	--	0.0%	--	0.0%	--	0.0%	--	--	1	0.5%	N/A	N/A
Nonresident Alien	4	1.3%	6	1.9%	5	1.7%	2	0.8%	0	0.0%	-100.0%	-100.0%
Missing	0	N/A	0	N/A	0	N/A	3	N/A	7	N/A	N/A	N/A
<b>Total</b>	<b>311</b>	<b>100.0%</b>	<b>309</b>	<b>100.0%</b>	<b>286</b>	<b>100.0%</b>	<b>250</b>	<b>100.0%</b>	<b>212</b>	<b>100.0%</b>	<b>-31.8%</b>	<b>-15.2%</b>

All Students	Fall 2005		Fall 2006		Fall 2007		Fall 2008		Fall 2010		Pct. Change 06 to 10	Pct. Change 09 to 10
	No.	Pct.	No.	Pct.	No.	Pct.	No.	Pct.	No.	Pct.		
Hispanic/Latino, Any Race	426	7.7%	473	8.3%	488	8.4%	517	8.8%	612	10.4%	43.7%	18.4%
Am. Indian/Native Alaskan, non-Hispanic	16	0.3%	16	0.3%	16	0.3%	21	0.4%	12	0.2%	-25.0%	-42.9%
Asian, non-Hispanic [1]	230	4.2%	235	4.1%	263	4.5%	283	4.8%	247	4.2%	N/A	N/A
Hawaiian/Pacific Islander, non-Hispanic [1]	--	--	--	--	--	--	--	--	25	0.4%	N/A	N/A
Black, non-Hispanic	325	5.9%	330	5.8%	350	6.0%	318	5.4%	266	4.5%	-18.2%	-16.4%
White, non-Hispanic	4,332	78.8%	4,493	78.8%	4,556	78.1%	4,613	78.5%	4,541	77.5%	4.8%	-1.6%
Multiple Races, non-Hispanic [1]	--	--	--	--	--	--	--	--	73	1.2%	N/A	N/A
Nonresident Alien	170	3.1%	155	2.7%	163	2.8%	127	2.2%	86	1.5%	-49.4%	-32.3%
Missing	0	N/A	0	N/A	11	N/A	147	N/A	146	N/A	N/A	N/A
<b>Total</b>	<b>5,499</b>	<b>100.0%</b>	<b>5,702</b>	<b>100.0%</b>	<b>5,847</b>	<b>100.0%</b>	<b>6,026</b>	<b>100.0%</b>	<b>6,008</b>	<b>100.0%</b>	<b>9.3%</b>	<b>-0.3%</b>



**ENROLLMENT BY CITIZENSHIP, FALL 2006 TO FALL 2010**

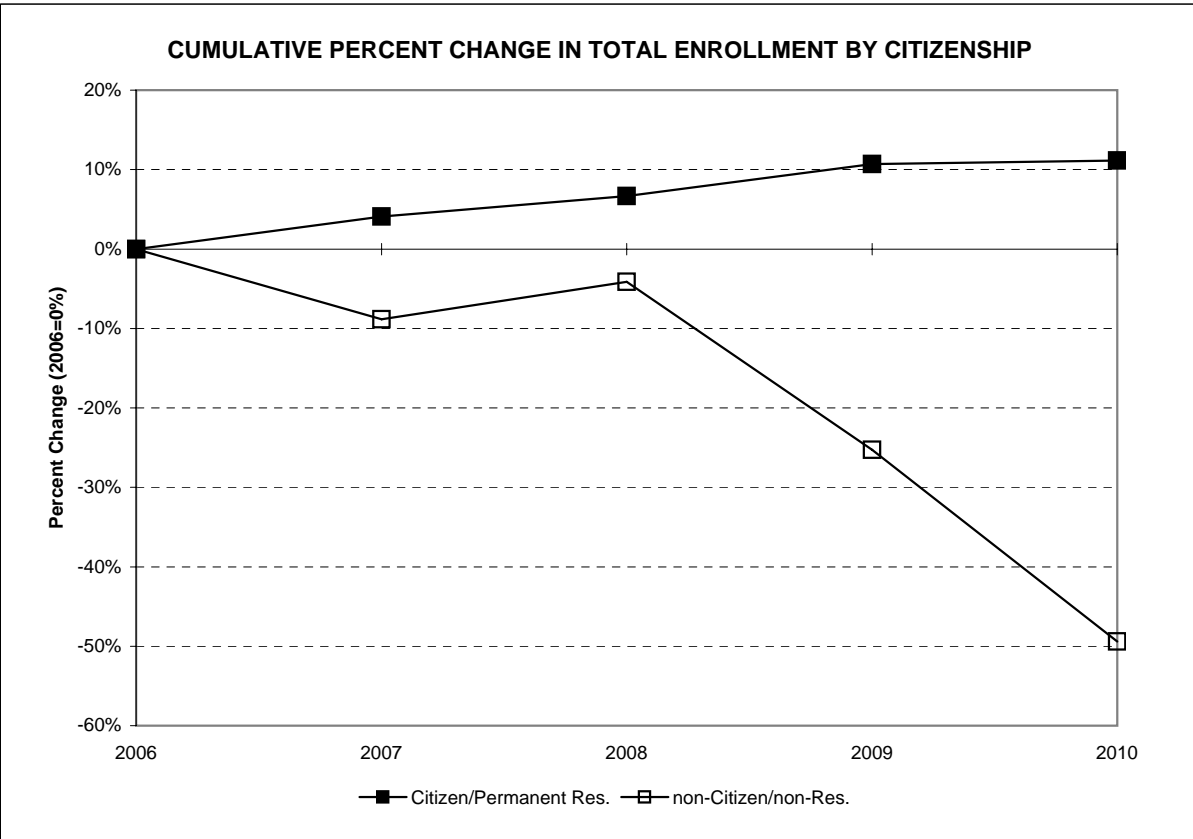
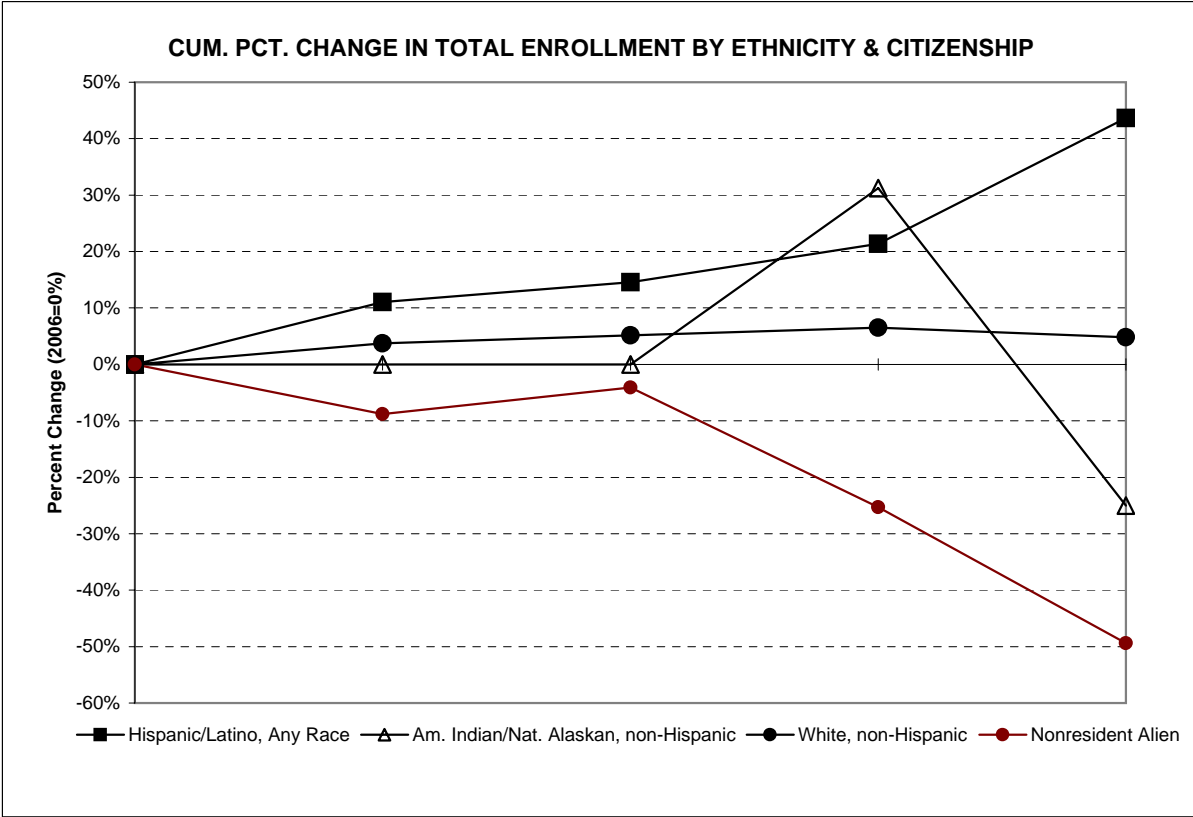
Undergraduate Students	Fall 2006		Fall 2007		Fall 2008		Fall 2009		Fall 2010		Pct. Change 06 to 10	Pct. Change 09 to 10
	No.	Pct.	No.	Pct.	No.	Pct.	No.	Pct.	No.	Pct.		
Citizen/Permanent Res.	5,022	96.8%	5,244	97.2%	5,403	97.2%	5,651	97.8%	5,710	98.5%	13.7%	1.0%
non-Citizen/non-Res.	166	3.2%	149	2.8%	158	2.8%	125	2.2%	86	1.5%	-48.2%	-31.2%
<b>Total</b>	<b>5,188</b>		<b>5,393</b>		<b>5,561</b>		<b>5,776</b>		<b>5,796</b>		<b>11.7%</b>	<b>0.3%</b>

Graduate Students	Fall 2006		Fall 2007		Fall 2007		Fall 2009		Fall 2010		Pct. Change 06 to 10	Pct. Change 09 to 10
	No.	Pct.	No.	Pct.	No.	Pct.	No.	Pct.	No.	Pct.		
Citizen/Permanent Res.	307	98.7%	303	98.1%	281	98.3%	248	99.2%	212	100.0%	-30.9%	-14.5%
non-Citizen/non-Res.	4	1.3%	6	1.9%	5	1.7%	2	0.8%	0	0.0%	-100.0%	-100.0%
<b>Total</b>	<b>311</b>		<b>309</b>		<b>286</b>		<b>250</b>		<b>212</b>		<b>-31.8%</b>	<b>-15.2%</b>

All Students	Fall 2006		Fall 2007		Fall 2007		Fall 2009		Fall 2010		Pct. Change 06 to 10	Pct. Change 09 to 10
	No.	Pct.	No.	Pct.	No.	Pct.	No.	Pct.	No.	Pct.		
Citizen/Permanent Res.	5,329	96.9%	5,547	97.3%	5,684	97.2%	5,899	97.9%	5,922	98.6%	11.1%	0.4%
non-Citizen/non-Res.	170	3.1%	155	2.7%	163	2.8%	127	2.1%	86	1.4%	-49.4%	-32.3%
<b>Total</b>	<b>5,499</b>		<b>5,702</b>		<b>5,847</b>		<b>6,026</b>		<b>6,008</b>		<b>9.3%</b>	<b>-0.3%</b>

[1] New Race/Ethnicity categories came into effect in AY09-10 (as listed above). Until at least two years' data is collected, we can not calculate the percent change for three of the new non-Hispanic categories. The categories for Asian, Hawaiian/Pacific Islander, and Multiple-Races do not have prior data according to the new definitions. Prior to fall 2010, the counts above for "Asian, non-Hispanic" were formerly grouped together as "Asian or Pacific Islander."

revised 3/16/11 for ethnicity percentages



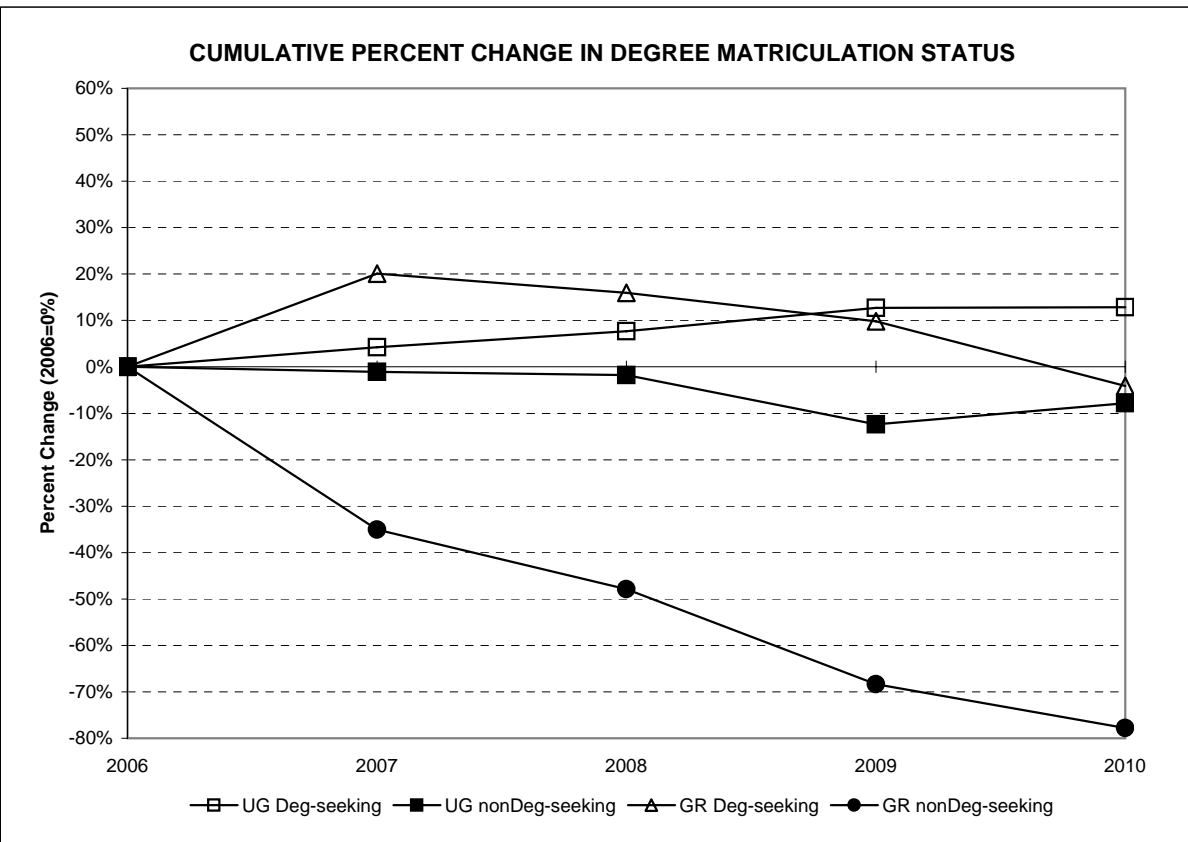
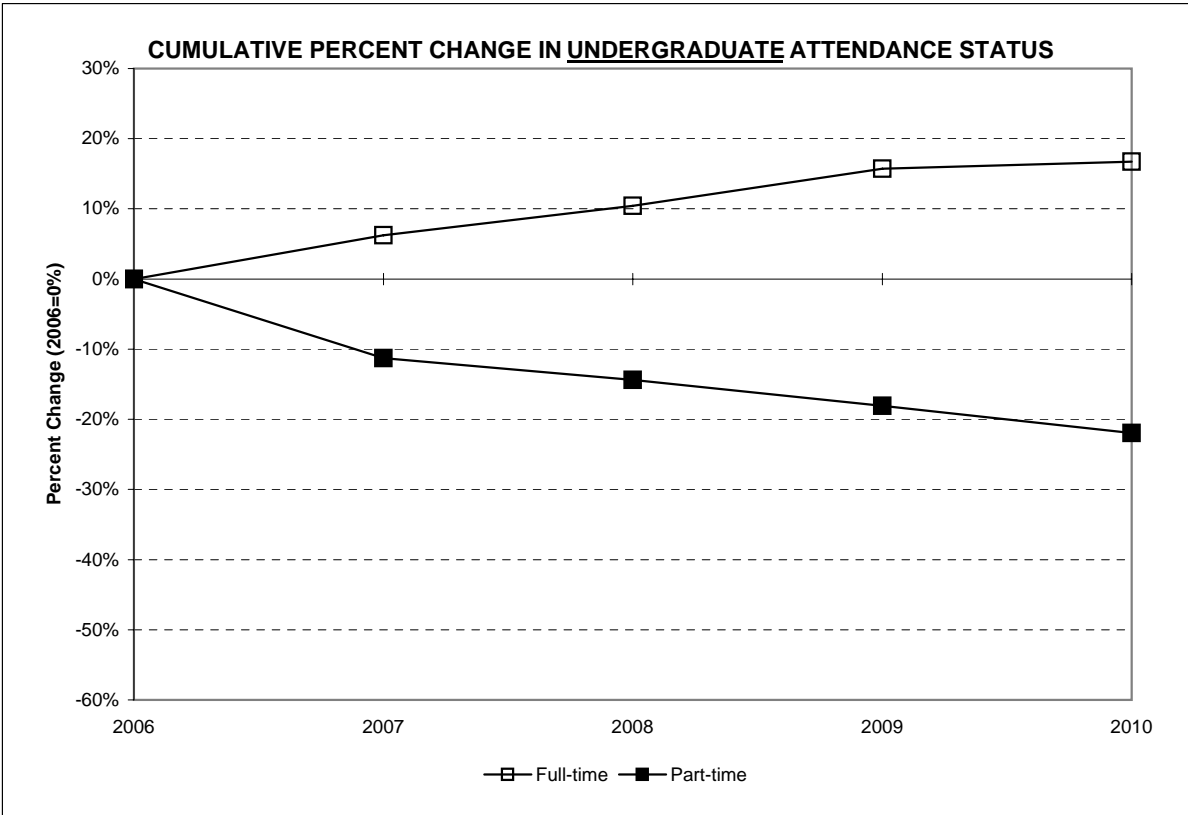
**ENROLLMENT BY ATTENDANCE STATUS, FALL 2006 TO FALL 2010**

	Fall 2006		Fall 2007		Fall 2008		Fall 2009		Fall 2010		Pct. Change 06 to 10	Pct. Change 09 to 10
	No.	Pct.	No.	Pct.	No.	Pct.	No.	Pct.	No.	Pct.		
<b>Undergraduate Students</b>												
Full-time	4,514	87.0%	4,795	88.9%	4,984	89.6%	5,224	90.4%	5,270	90.9%	16.7%	0.9%
Part-time	674	13.0%	598	11.1%	577	10.4%	552	9.6%	526	9.1%	-22.0%	-4.7%
<b>Total</b>	<b>5,188</b>		<b>5,393</b>		<b>5,561</b>		<b>5,776</b>		<b>5,796</b>		<b>11.7%</b>	<b>0.3%</b>
<b>Graduate Students</b>												
Full-time	5	1.6%	6	1.9%	11	3.8%	6	2.4%	7	3.3%	40.0%	16.7%
Part-time	306	98.4%	303	98.1%	275	96.2%	244	97.6%	205	96.7%	-33.0%	-16.0%
<b>Total</b>	<b>311</b>		<b>309</b>		<b>286</b>		<b>250</b>		<b>212</b>		<b>-31.8%</b>	<b>-15.2%</b>
<b>All Students</b>												
Full-time	4,519	82.2%	4,801	84.2%	4,995	85.4%	5,230	86.8%	5,277	87.8%	16.8%	0.9%
Part-time	980	17.8%	901	15.8%	852	14.6%	796	13.2%	731	12.2%	-25.4%	-8.2%
<b>Total</b>	<b>5,499</b>		<b>5,702</b>		<b>5,847</b>		<b>6,026</b>		<b>6,008</b>		<b>9.3%</b>	<b>-0.3%</b>



**ENROLLMENT BY MATRICULATION STATUS, FALL 2006 TO FALL 2010**

	Fall 2006		Fall 2007		Fall 2008		Fall 2009		Fall 2010		Pct. Change 06 to 10	Pct. Change 09 to 10
	No.	Pct.	No.	Pct.	No.	Pct.	No.	Pct.	No.	Pct.		
<b>Undergraduate Students</b>												
Degree-seeking	4,906	94.6%	5,114	94.8%	5,284	95.0%	5,529	95.7%	5,536	95.5%	12.8%	0.1%
Nondegree-seeking	282	5.4%	279	5.2%	277	5.0%	247	4.3%	260	4.5%	-7.8%	5.3%
<b>Total</b>	<b>5,188</b>		<b>5,393</b>		<b>5,561</b>		<b>5,776</b>		<b>5,796</b>		<b>11.7%</b>	<b>0.3%</b>
<b>Graduate Students</b>												
Degree-seeking	194	62.4%	233	75.4%	225	78.7%	213	85.2%	186	87.7%	-4.1%	-12.7%
Nondegree-seeking	117	37.6%	76	24.6%	61	21.3%	37	14.8%	26	12.3%	-77.8%	-29.7%
<b>Total</b>	<b>311</b>		<b>309</b>		<b>286</b>		<b>250</b>		<b>212</b>		<b>-31.8%</b>	<b>-15.2%</b>
<b>All Students</b>												
Degree-seeking	5,100	92.7%	5,347	93.8%	5,509	94.2%	5,742	95.3%	5,722	95.2%	12.2%	-0.3%
Nondegree-seeking	399	7.3%	355	6.2%	338	5.8%	284	4.7%	286	4.8%	-28.3%	0.7%
<b>Total</b>	<b>5,499</b>		<b>5,702</b>		<b>5,847</b>		<b>6,026</b>		<b>6,008</b>		<b>9.3%</b>	<b>-0.3%</b>



**ENROLLMENT BY VETERAN STATUS, FALL 2006 TO FALL 2010**

All Students	Fall 2006		Fall 2007		Fall 2008		Fall 2009		Fall 2010		Pct. Change 06 to 10	Pct. Change 09 to 10
	No.	Pct.	No.	Pct.	No.	Pct.	No.	Pct.	No.	Pct.		
Veteran	11	0.2%	24	0.4%	13	0.2%	53	0.9%	53	0.9%	381.8%	0.0%
Depend of Dec'd. Vet.	0	0.0%	0	0.0%	0	0.0%	0	0.0%	0	0.0%	N/A	N/A
Non-Veteran	5,488	99.8%	5,678	99.6%	5,834	99.8%	5,973	99.1%	5,955	99.1%	8.5%	-0.3%
<b>Total</b>	<b>5,499</b>		<b>5,702</b>		<b>5,847</b>		<b>6,026</b>		<b>6,008</b>		<b>9.3%</b>	<b>-0.3%</b>

**ENROLLMENT BY DISABILITY STATUS, FALL 2006 TO FALL 2010**

All Students	Fall 2006		Fall 2007		Fall 2008		Fall 2009		Fall 2010		Pct. Change 06 to 10	Pct. Change 09 to 10
	No.	Pct.	No.	Pct.	No.	Pct.	No.	Pct.	No.	Pct.		
Disabled	198	3.6%	231	4.1%	246	4.2%	265	4.4%	313	5.2%	58.1%	18.1%
Not Disabled	5,301	96.4%	5,471	95.9%	5,601	95.8%	5,761	95.6%	5,695	94.8%	7.4%	-1.1%
Missing	0	N/A	0	N/A	0	N/A	0	N/A	0	N/A	N/A	N/A
<b>Total</b>	<b>5,499</b>		<b>5,702</b>		<b>5,847</b>		<b>6,026</b>		<b>6,008</b>		<b>9.3%</b>	<b>-0.3%</b>

**UNDERGRADUATE ENROLLMENT BY CLASS RANK, FALL 2006 TO FALL 2010**

Undergraduate Students: <sup>[1]</sup>	Fall 2006		Fall 2007		Fall 2008		Fall 2009		Fall 2010		Pct. Change 06 to 10	Pct. Change 09 to 10
	No.	Pct.	No.	Pct.	No.	Pct.	No.	Pct.	No.	Pct.		
Freshmen	1,263	25.7%	1,369	26.8%	1,397	26.4%	1,450	26.2%	1,306	23.6%	3.4%	-9.9%
Sophomores	1,137	23.2%	1,141	22.3%	1,203	22.8%	1,210	21.9%	1,299	23.5%	14.2%	7.4%
Juniors	1,351	27.5%	1,365	26.7%	1,449	27.4%	1,495	27.0%	1,549	28.0%	14.7%	3.6%
Seniors	1,155	23.5%	1,239	24.2%	1,235	23.4%	1,374	24.9%	1,382	25.0%	19.7%	0.6%
Unclassified/nonDeg.	282	N/A	279	N/A	277	N/A	247	N/A	260	N/A	N/A	N/A
<b>Total</b>	<b>5,188</b>		<b>5,393</b>		<b>5,561</b>		<b>5,776</b>		<b>5,796</b>		<b>11.7%</b>	<b>0.3%</b>

**UNDERGRADUATE ENROLLMENT BY SPECIAL PROGRAM STATUS, FALL 2006 TO FALL 2010**

Undergraduate Students	Fall 2006		Fall 2007		Fall 2008		Fall 2009		Fall 2010		Pct. Change 06 to 10	Pct. Change 09 to 10
	No.	Pct.	No.	Pct.	No.	Pct.	No.	Pct.	No.	Pct.		
EOF	307	5.9%	302	5.6%	309	5.6%	343	5.9%	374	6.5%	21.8%	9.0%
EOF Honor's Program	0	0.0%	1	0.0%	1	0.0%	1	0.0%	0	0.0%	N/A	-100.0%
Honor's Program	98	1.9%	146	2.7%	183	3.3%	171	3.0%	126	2.2%	28.6%	-26.3%
No Spec. Prog. Desig.	4,783	92.2%	4,944	91.7%	5,068	91.1%	5,261	91.1%	5,296	91.4%	10.7%	0.7%
<b>Total</b>	<b>5,188</b>		<b>5,393</b>		<b>5,561</b>		<b>5,776</b>		<b>5,796</b>		<b>11.7%</b>	<b>0.3%</b>

[1] Fall 2008 distribution revised on 11/09.

TOTAL FALL 2010 ENROLLMENT = 6,008

All Students	Fall 2006 <sup>[1]</sup>		Fall 2007		Fall 2008		Fall 2009 <sup>[2]</sup>		Fall 2010		Pct. Change 06 to 10	Pct. Change 09 to 10
	No.	Pct.	No.	Pct.	No.	Pct.	No.	Pct.	No.	Pct.		
Atlantic	14	0.3%	13	0.2%	12	0.2%	14	0.2%	21	0.3%	50.0%	50.0%
Bergen	1,846	33.6%	1,955	34.3%	2,063	35.3%	2,172	36.0%	2,178	36.3%	18.0%	0.3%
Burlington	46	0.8%	54	0.9%	60	1.0%	62	1.0%	57	0.9%	23.9%	-8.1%
Camden	50	0.9%	47	0.8%	45	0.8%	46	0.8%	43	0.7%	-14.0%	-6.5%
Cape May	9	0.2%	12	0.2%	12	0.2%	11	0.2%	15	0.2%	66.7%	36.4%
Cumberland	11	0.2%	9	0.2%	7	0.1%	8	0.1%	9	0.1%	-18.2%	12.5%
Essex	184	3.3%	194	3.4%	207	3.5%	216	3.6%	214	3.6%	16.3%	-0.9%
Gloucester	26	0.5%	29	0.5%	24	0.4%	20	0.3%	18	0.3%	-30.8%	-10.0%
Hudson	132	2.4%	127	2.2%	141	2.4%	132	2.2%	147	2.4%	11.4%	11.4%
Hunterdon	54	1.0%	60	1.1%	54	0.9%	58	1.0%	65	1.1%	20.4%	12.1%
Mercer	52	0.9%	42	0.7%	40	0.7%	47	0.8%	57	0.9%	9.6%	21.3%
Middlesex	452	8.2%	429	7.5%	382	6.5%	382	6.3%	364	6.1%	-19.5%	-4.7%
Monmouth	390	7.1%	432	7.6%	444	7.6%	477	7.9%	476	7.9%	22.1%	-0.2%
Morris	318	5.8%	344	6.0%	381	6.5%	420	7.0%	444	7.4%	39.6%	5.7%
Ocean	252	4.6%	236	4.1%	233	4.0%	220	3.7%	227	3.8%	-9.9%	3.2%
Passaic	585	10.6%	644	11.3%	682	11.7%	711	11.8%	709	11.8%	21.2%	-0.3%
Salem	2	0.0%	4	0.1%	2	0.0%	2	0.0%	3	0.0%	50.0%	50.0%
Somerset	91	1.7%	96	1.7%	87	1.5%	93	1.5%	100	1.7%	9.9%	7.5%
Sussex	256	4.7%	274	4.8%	278	4.8%	296	4.9%	301	5.0%	17.6%	1.7%
Union	130	2.4%	142	2.5%	146	2.5%	151	2.5%	149	2.5%	14.6%	-1.3%
Warren	71	1.3%	60	1.1%	60	1.0%	78	1.3%	74	1.2%	4.2%	-5.1%
Orange, NY	89	1.6%	91	1.6%	72	1.2%	70	1.2%	41	0.7%	-53.9%	-41.4%
Rockland, NY	174	3.2%	164	2.9%	162	2.8%	142	2.4%	131	2.2%	-24.7%	-7.7%
Westchester, NY	13	0.2%	7	0.1%	3	0.1%	0	0.0%	1	0.0%	-92.3%	N/A
Out of State/Other	252	4.6%	237	4.2%	250	4.3%	198	3.3%	164	2.7%	-34.9%	-17.2%
Total	5,499		5,702		5,847		6,026		6,008		9.3%	-0.3%

[1] Fall 2006 distribution revised on 11/07.

[2] Fall 2009 distribution revised on 10/10.

**Non-Citizen Enrollment by Country of Origin, Fall 2006 to Fall 2010**

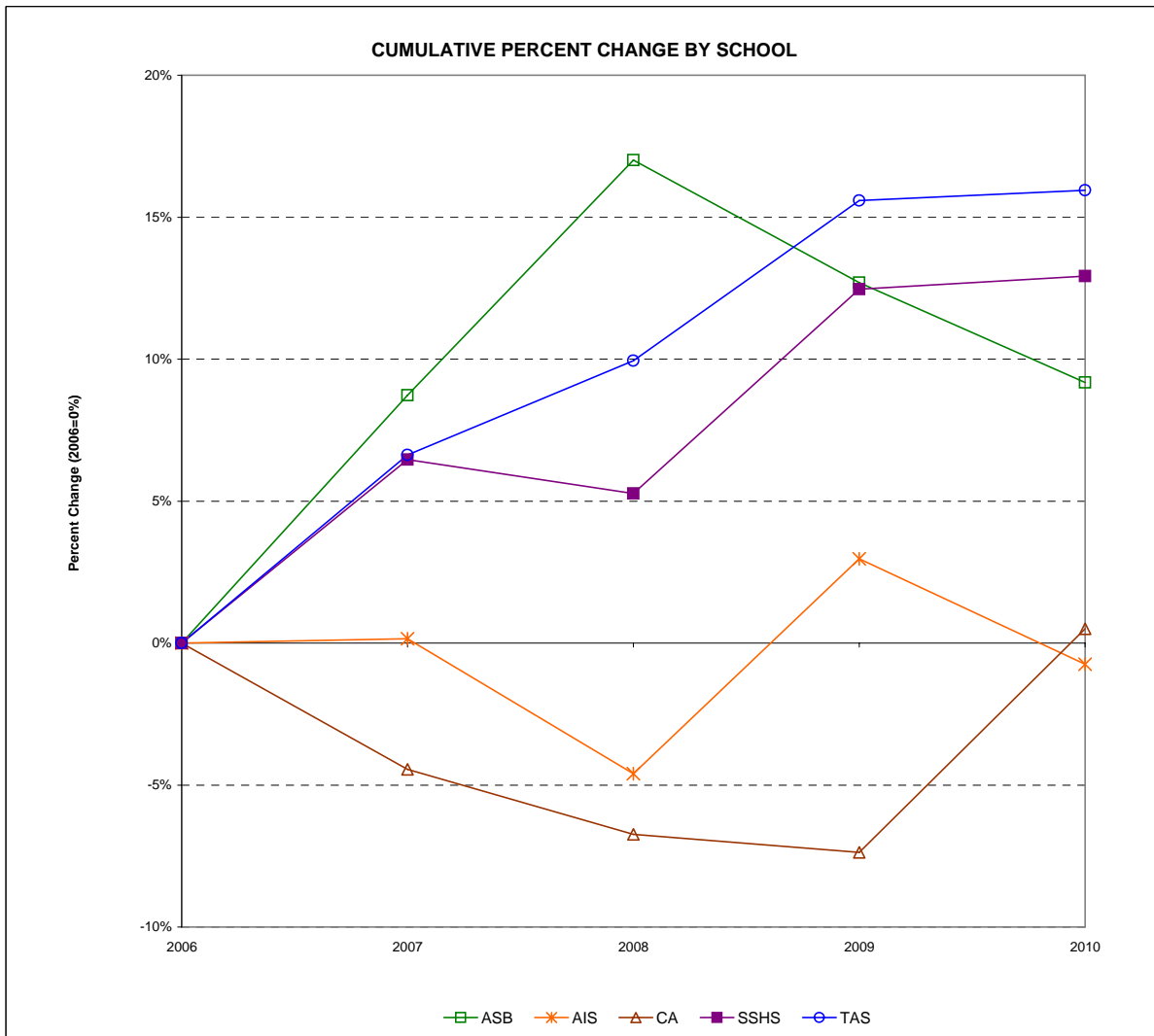
Country	Fall 2006		Fall 2007		Fall 2008		Fall 2009		Fall 2010		Country	Fall 2006		Fall 2007		Fall 2008		Fall 2009		Fall 2010		
	No.	Pct.	No.	Pct.	No.	Pct.	No.	Pct.	No.	Pct.		No.	Pct.	No.	Pct.	No.	Pct.	No.	Pct.	No.	Pct.	
Afghanistan			1	0.6%	1	0.6%	1	0.8%	1	1.2%	Ivory Coast											
Albania											Jamaica	3	1.8%	3	1.9%	2	1.2%	2	1.6%	1	1.2%	
Argentina	2	1.2%	1	0.6%	1	0.6%	1	0.8%			Japan	8	4.7%	4	2.6%	1	0.6%	1	0.8%	1	1.2%	
Armenia			1	0.6%	1	0.6%					Kampuchea											
Australia					2	1.2%					Kenya	3	1.8%	5	3.2%	2	1.2%	2	1.6%	3	3.5%	
Austria			1	0.6%	2	1.2%	2	1.6%	1	1.2%	Lebanon			1	0.6%	1	0.6%					
Bahamas	6	3.5%	4	2.6%							Liberia											
Bahrain	2	1.2%	1	0.6%	1	0.6%					Lithuania											
Bangladesh	1	0.6%	1	0.6%	1	0.6%			1	1.2%	(FYRO) Macedonia			2	1.3%	2	1.2%	1	0.8%			
Bolivia											Malaysia					1	0.6%					
Bosnia-Herzegovina											Mauritius	1	0.6%	1	0.6%							
Brazil	5	2.9%	3	1.9%	7	4.3%	7	5.5%	3	3.5%	Mexico					1	0.6%			2	2.3%	
British Virgin Islands											Moldova	1	0.6%									
Bulgaria	38	22.4%	38	24.5%	33	20.2%	29	22.8%	18	20.9%	Mongolia	1	0.6%	1	0.6%	2	1.2%	2	1.6%	1	1.2%	
Burma											Morocco	1	0.6%	1	0.6%							
Cambodia	1	0.6%									Nepal	1	0.6%					1	0.8%	4	4.7%	
Canada	2	1.2%	1	0.6%	1	0.6%	1	0.8%			Netherlands	1	0.6%					1	0.8%			
Taiwan (China, Nationalist)					1	0.6%	1	0.8%			Nigeria	4	2.4%	6	3.9%	8	4.9%	10	7.9%	4	4.7%	
China, People's Republic	1	0.6%	2	1.3%	2	1.2%	2	1.6%	3	3.5%	Norway					1	0.6%					
Colombia	1	0.6%	1	0.6%	2	1.2%	2	1.6%			Oman					1	0.6%	1	0.8%	1	1.2%	
Costa Rica	1	0.6%			1	0.6%					Pakistan	3	1.8%	3	1.9%	1	0.6%				1	1.2%
Croatia	2	1.2%	2	1.3%	2	1.2%	1	0.8%			Panama	1	0.6%			1	0.6%					
Cyprus											Peru	2	1.2%	1	0.6%	1	0.6%	1	0.8%			
Czech Republic							1	0.8%			Philippines	2	1.2%	3	1.9%	4	2.5%	2	1.6%			
Denmark					1	0.6%					Poland	9	5.3%	6	3.9%	4	2.5%	3	2.4%	2	2.3%	
Dominican Republic											Portugal											
Ecuador	1	0.6%									Romania	2	1.2%	2	1.3%	2	1.2%	1	0.8%			
Egypt			1	0.6%							Russia	7	4.1%	4	2.6%	4	2.5%	3	2.4%	1	1.2%	
El Salvador	1	0.6%	1	0.6%	1	0.6%					Serbia-Montenegro					1	0.6%					
Estonia	1	0.6%	1	0.6%							St. Vincent/Gren.	1	0.6%	1	0.6%	1	0.6%	1	0.8%	1	1.2%	
Ethiopia	2	1.2%	1	0.6%	1	0.6%	1	0.8%			Slovak Republic	1	0.6%	1	0.6%	1	0.6%	1	0.8%			
Fiji											South Africa	2	1.2%	1	0.6%	1	0.6%	2	1.6%	2	2.3%	
France	2	1.2%	1	0.6%	3	1.8%			2	2.3%	South Korea	11	6.5%	10	6.5%	7	4.3%	4	3.1%	2	2.3%	
Germany	11	6.5%	5	3.2%	22	13.5%	19	15.0%	21	24.4%	Spain	2	1.2%	1	0.6%	1	0.6%	1	0.8%			
Ghana											Sri Lanka	1	0.6%	1	0.6%							
Guyana											Sweden	1	0.6%			4	2.5%	4	3.1%	4	4.7%	
Haiti			1	0.6%			1	0.8%			Switzerland											
Hong Kong											Tanzania	1	0.6%	1	0.6%							
Hungary			1	0.6%	1	0.6%	1	0.8%			Trinidad & Tobago	7	4.1%	9	5.8%	5	3.1%	3	2.4%	1	1.2%	
Iceland											Turkey			2	1.3%	3	1.8%	1	0.8%	1	1.2%	
India	4	2.4%	6	3.9%	6	3.7%	4	3.1%	3	3.5%	Uganda	1	0.6%									
Indonesia	1	0.6%	1	0.6%	1	0.6%					Ukraine	1	0.6%					1	0.8%	1	1.2%	
Iran			1	0.6%							United Kingdom											
Iraq	2	1.2%	2	1.3%	2	1.2%	2	1.6%			Venezuela											
Israel	2	1.2%	3	1.9%	3	1.8%	1	0.8%			Yugoslavia (Slovenia)	2	1.2%	1	0.6%			1	0.8%			
Italy			2	1.3%	1	0.6%					Zambia											
<b>TOTAL</b>											<b>TOTAL</b>	170		155		163		127		86		



TOTAL FALL 2010 ENROLLMENT = 6,008

**MATRICULATED UNDERGRADUATE ENROLLMENT BY SCHOOL, FALL 2006 TO FALL 2010**

Schools	Fall 2006		Fall 2007		Fall 2008		Fall 2009		Fall 2010		Percent Change 06 to 10	Percent Change 09 to 10
	No.	Pct.	No.	Pct.	No.	Pct.	No.	Pct.	No.	Pct.		
Anisfield School of Business	1,111	22.6%	1,208	23.6%	1,300	24.6%	1,252	22.6%	1,213	21.9%	9.2%	-3.1%
American & Int'l Studies	674	13.7%	675	13.2%	643	12.2%	694	12.6%	669	12.1%	-0.7%	-3.6%
Contemporary Arts	787	16.0%	752	14.7%	734	13.9%	729	13.2%	791	14.3%	0.5%	8.5%
Soc. Science & Human Services	1,083	22.1%	1,153	22.5%	1,140	21.6%	1,218	22.0%	1,223	22.1%	12.9%	0.4%
Theoretical & Applied Science	1,116	22.7%	1,190	23.3%	1,227	23.2%	1,290	23.3%	1,294	23.4%	15.9%	0.3%
School Undecided	135	2.8%	136	2.7%	240	4.5%	346	6.3%	346	6.3%	156.3%	0.0%
<b>Total</b>	<b>4,906</b>		<b>5,114</b>		<b>5,284</b>		<b>5,529</b>		<b>5,536</b>		<b>12.8%</b>	<b>0.1%</b>



MATRICULATED UNDERGRADUATE ENROLLMENT BY SCHOOL AND MAJOR, FALL 2006 TO FALL 2010

Majors	Fall 2006		Fall 2007		Fall 2008		Fall 2009		Fall 2010		Percent Change 06 to 10	Percent Change 09 to 10
	No.	Pct.	No.	Pct.	No.	Pct.	No.	Pct.	No.	Pct.		
<b>ASB</b> Accounting	205	4.2%	204	4.0%	232	4.4%	262	4.7%	308	5.6%	50.2%	17.6%
Business Administration	575	11.7%	636	12.4%	752	14.2%	731	13.2%	699	12.6%	21.6%	-4.4%
Economics	32	0.7%	32	0.6%	28	0.5%	31	0.6%	21	0.4%	-34.4%	-32.3%
Information Systems	74	1.5%	73	1.4%	59	1.1%	59	1.1%	53	1.0%	-28.4%	-10.2%
International Business	70	1.4%	71	1.4%	67	1.3%	59	1.1%	61	1.1%	-12.9%	3.4%
Undecided Major	155	3.2%	192	3.8%	162	3.1%	110	2.0%	71	1.3%	-54.2%	-35.5%
<b>AIS</b> American Studies	33	0.7%	30	0.6%	31	0.6%	31	0.6%	18	0.3%	-45.5%	-41.9%
History	237	4.8%	233	4.6%	233	4.4%	238	4.3%	206	3.7%	-13.1%	-13.4%
International Studies	53	1.1%	59	1.2%	55	1.0%	65	1.2%	59	1.1%	11.3%	-9.2%
Law and Society <sup>[1]</sup>	1	0.0%	-	-	-	-	-	-	-	-	N/A	N/A
Liberal Studies	-	-	-	-	7	0.1%	18	0.3%	22	0.4%	N/A	22.2%
Literature	218	4.4%	208	4.1%	199	3.8%	216	3.9%	222	4.0%	1.8%	2.8%
Political Science	72	1.5%	77	1.5%	59	1.1%	75	1.4%	78	1.4%	8.3%	4.0%
Spanish	24	0.5%	22	0.4%	24	0.5%	32	0.6%	34	0.6%	41.7%	6.3%
Undecided Major	36	0.7%	46	0.9%	35	0.7%	19	0.3%	30	0.5%	-16.7%	57.9%
<b>CA</b> Communication Arts	443	9.0%	391	7.6%	404	7.6%	440	8.0%	442	8.0%	-0.2%	0.5%
Contemporary Arts	86	1.8%	66	1.3%	61	1.2%	57	1.0%	61	1.1%	-29.1%	7.0%
Music	62	1.3%	71	1.4%	70	1.3%	72	1.3%	108	2.0%	74.2%	50.0%
Theater	41	0.8%	54	1.1%	50	0.9%	45	0.8%	66	1.2%	61.0%	46.7%
Visual Arts	111	2.3%	122	2.4%	117	2.2%	89	1.6%	96	1.7%	-13.5%	7.9%
Undecided Major	44	0.9%	48	0.9%	32	0.6%	26	0.5%	18	0.3%	-59.1%	-30.8%
<b>SSHS</b> Environmental Studies	40	0.8%	40	0.8%	42	0.8%	62	1.1%	60	1.1%	50.0%	-3.2%
Law and Society	213	4.3%	192	3.8%	174	3.3%	183	3.3%	152	2.7%	-28.6%	-16.9%
Psychology	532	10.8%	584	11.4%	604	11.4%	657	11.9%	666	12.0%	25.2%	1.4%
Social Science	19	0.4%	24	0.5%	44	0.8%	49	0.9%	56	1.0%	194.7%	14.3%
Social Work	113	2.3%	119	2.3%	129	2.4%	127	2.3%	153	2.8%	35.4%	20.5%
Sociology	51	1.0%	58	1.1%	52	1.0%	78	1.4%	78	1.4%	52.9%	0.0%
Undecided Major	115	2.3%	136	2.7%	95	1.8%	62	1.1%	58	1.0%	-49.6%	-6.5%
<b>TAS</b> Allied Health	10	0.2%	14	0.3%	18	0.3%	17	0.3%	10	0.2%	0.0%	-41.2%
Biochemistry	43	0.9%	43	0.8%	53	1.0%	47	0.9%	48	0.9%	11.6%	2.1%
Bioinformatics	19	0.4%	12	0.2%	11	0.2%	8	0.1%	13	0.2%	-31.6%	62.5%
Biology	290	5.9%	340	6.6%	367	6.9%	407	7.4%	392	7.1%	35.2%	-3.7%
Chemistry	24	0.5%	19	0.4%	29	0.5%	31	0.6%	42	0.8%	75.0%	35.5%
Clinical Lab Sciences	11	0.2%	9	0.2%	11	0.2%	12	0.2%	7	0.1%	-36.4%	-41.7%
Computer Science	76	1.5%	67	1.3%	73	1.4%	63	1.1%	69	1.2%	-9.2%	9.5%
Environmental Science	28	0.6%	42	0.8%	43	0.8%	44	0.8%	55	1.0%	96.4%	25.0%
Integrated Science	13	0.3%	12	0.2%	4	0.1%	5	0.1%	6	0.1%	-53.8%	20.0%
Mathematics	112	2.3%	110	2.2%	113	2.1%	124	2.2%	138	2.5%	23.2%	11.3%
Nursing	388	7.9%	407	8.0%	421	8.0%	438	7.9%	422	7.6%	8.8%	-3.7%
Engineering Physics/ <b>Physics</b>	14	0.3%	18	0.4%	27	0.5%	30	0.5%	29	0.5%	107.1%	-3.3%
Undecided Major	88	1.8%	97	1.9%	57	1.1%	64	1.2%	63	1.1%	-28.4%	-1.6%
School & Major Undecided	135	2.8%	136	2.7%	240	4.5%	346	6.3%	346	6.3%	156.3%	0.0%
<b>Total</b>	<b>4,906</b>		<b>5,114</b>		<b>5,284</b>		<b>5,529</b>		<b>5,536</b>		<b>12.8%</b>	<b>0.1%</b>

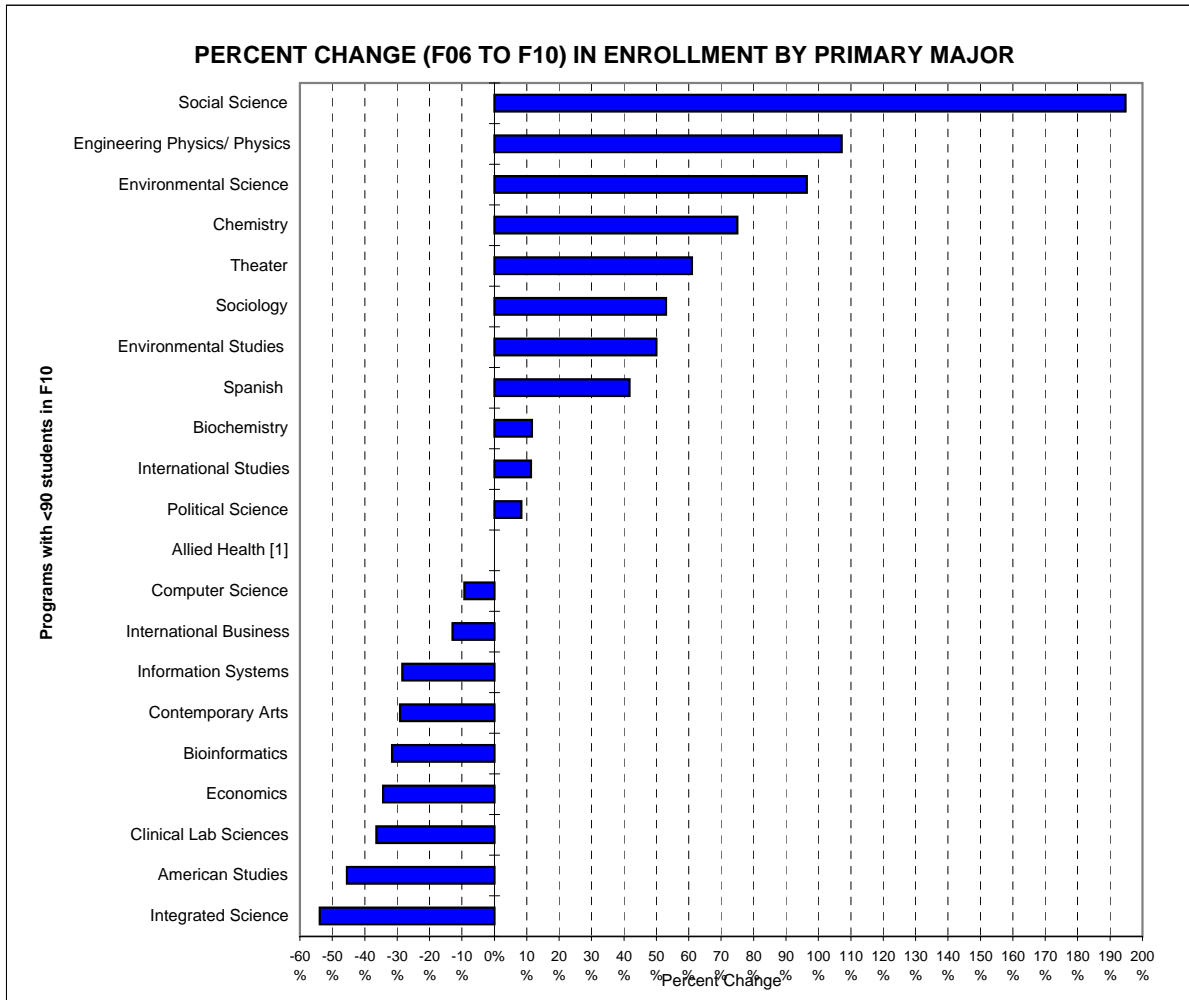
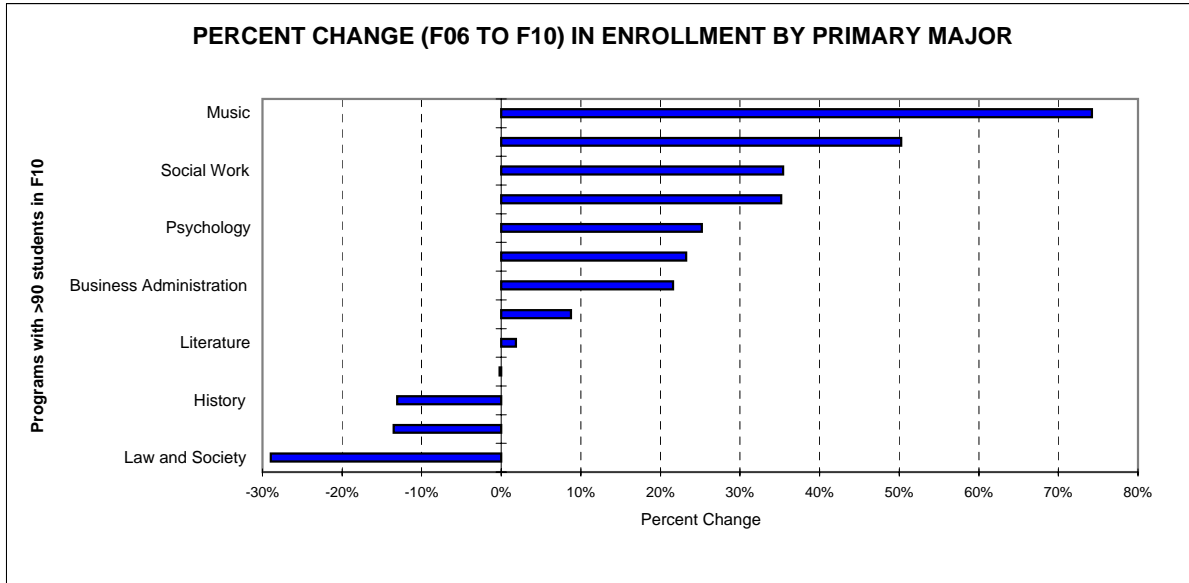
[1] The domicile of certain majors changed in Fall 2006. Economics is now exclusive to ASB. Law & Society is now exclusive to SSHS. Political Science and History are now majors exclusive to AIS. Environmental Studies and Psychology are now majors exclusive to SSHS.

MATRICULATED UNDERGRADUATE ENROLLMENT BY MAJOR, FALL 2006 TO FALL 2010

Majors	Fall 2006		Fall 2007		Fall 2008		Fall 2009		Fall 2010		Percent Change 06 to 10	Percent Change 09 to 10
	No.	Pct.	No.	Pct.	No.	Pct.	No.	Pct.	No.	Pct.		
Accounting	205	4.9%	204	4.8%	232	5.2%	262	5.5%	308	6.5%	50.2%	17.6%
Allied Health	10	0.2%	14	0.3%	18	0.4%	17	0.4%	10	0.2%	0.0%	-41.2%
American Studies	33	0.8%	30	0.7%	31	0.7%	31	0.7%	18	0.4%	-45.5%	-41.9%
Biochemistry	43	1.0%	43	1.0%	53	1.2%	47	1.0%	48	1.0%	11.6%	2.1%
Bioinformatics	19	0.5%	12	0.3%	11	0.2%	8	0.2%	13	0.3%	-31.6%	62.5%
Biology	290	7.0%	340	8.0%	367	8.2%	407	8.6%	392	8.2%	35.2%	-3.7%
Business Administration	575	13.8%	636	14.9%	752	16.8%	731	15.4%	699	14.7%	21.6%	-4.4%
Chemistry	24	0.6%	19	0.4%	29	0.6%	31	0.7%	42	0.9%	75.0%	35.5%
Clinical Lab Sciences	11	0.3%	9	0.2%	11	0.2%	12	0.3%	7	0.1%	-36.4%	-41.7%
Communication Arts	443	10.7%	391	9.2%	404	9.0%	440	9.3%	442	9.3%	-0.2%	0.5%
Computer Science	76	1.8%	67	1.6%	73	1.6%	63	1.3%	69	1.5%	-9.2%	9.5%
Contemporary Arts	86	2.1%	66	1.5%	61	1.4%	57	1.2%	61	1.3%	-29.1%	7.0%
Economics	32	0.8%	32	0.8%	28	0.6%	31	0.7%	21	0.4%	-34.4%	-32.3%
Engineering Physics/ Physics	14	0.3%	18	0.4%	27	0.6%	30	0.6%	29	0.6%	107.1%	-3.3%
Environmental Science	28	0.7%	42	1.0%	43	1.0%	44	0.9%	55	1.2%	96.4%	25.0%
Environmental Studies	40	1.0%	40	0.9%	42	0.9%	62	1.3%	60	1.3%	50.0%	-3.2%
History	237	5.7%	233	5.5%	233	5.2%	238	5.0%	206	4.3%	-13.1%	-13.4%
Information Systems	74	1.8%	73	1.7%	59	1.3%	59	1.2%	53	1.1%	-28.4%	-10.2%
Integrated Science	13	0.3%	12	0.3%	4	0.1%	5	0.1%	6	0.1%	-53.8%	20.0%
International Business	70	1.7%	71	1.7%	67	1.5%	59	1.2%	61	1.3%	-12.9%	3.4%
International Studies	53	1.3%	59	1.4%	55	1.2%	65	1.4%	59	1.2%	11.3%	-9.2%
Law and Society	214	5.1%	192	4.5%	174	3.9%	183	3.9%	152	3.2%	-29.0%	-16.9%
Liberal Studies <sup>[1]</sup>	--	--	--	--	7	0.2%	18	0.4%	22	0.5%	N/A	22.2%
Literature	218	5.2%	208	4.9%	199	4.4%	216	4.6%	222	4.7%	1.8%	2.8%
Mathematics	112	2.7%	110	2.6%	113	2.5%	124	2.6%	138	2.9%	23.2%	11.3%
Music	62	1.5%	71	1.7%	70	1.6%	72	1.5%	108	2.3%	74.2%	50.0%
Nursing	388	9.3%	407	9.6%	421	9.4%	438	9.2%	422	8.9%	8.8%	-3.7%
Political Science	72	1.7%	77	1.8%	59	1.3%	75	1.6%	78	1.6%	8.3%	4.0%
Psychology	532	12.8%	584	13.7%	604	13.5%	657	13.9%	666	14.0%	25.2%	1.4%
Social Science	19	0.5%	24	0.6%	44	1.0%	49	1.0%	56	1.2%	194.7%	14.3%
Social Work	113	2.7%	119	2.8%	129	2.9%	127	2.7%	153	3.2%	35.4%	20.5%
Sociology	51	1.2%	58	1.4%	52	1.2%	78	1.6%	78	1.6%	52.9%	0.0%
Spanish	24	0.6%	22	0.5%	24	0.5%	32	0.7%	34	0.7%	41.7%	6.3%
Theater	41	1.0%	54	1.3%	50	1.1%	45	1.0%	66	1.4%	61.0%	46.7%
Visual Arts	111	2.7%	122	2.9%	117	2.6%	89	1.9%	96	2.0%	-13.5%	7.9%
Undecided Major	573	N/A	655	N/A	621	N/A	627	N/A	586	N/A	N/A	N/A
Total	4,906		5,114		5,284		5,529		5,536		12.8%	0.1%

[1] The Liberal Studies major was added in Fall 2008.

TOTAL FALL 2010 ENROLLMENT = 6,008  
 MATRICULATED UNDERGRADUATES

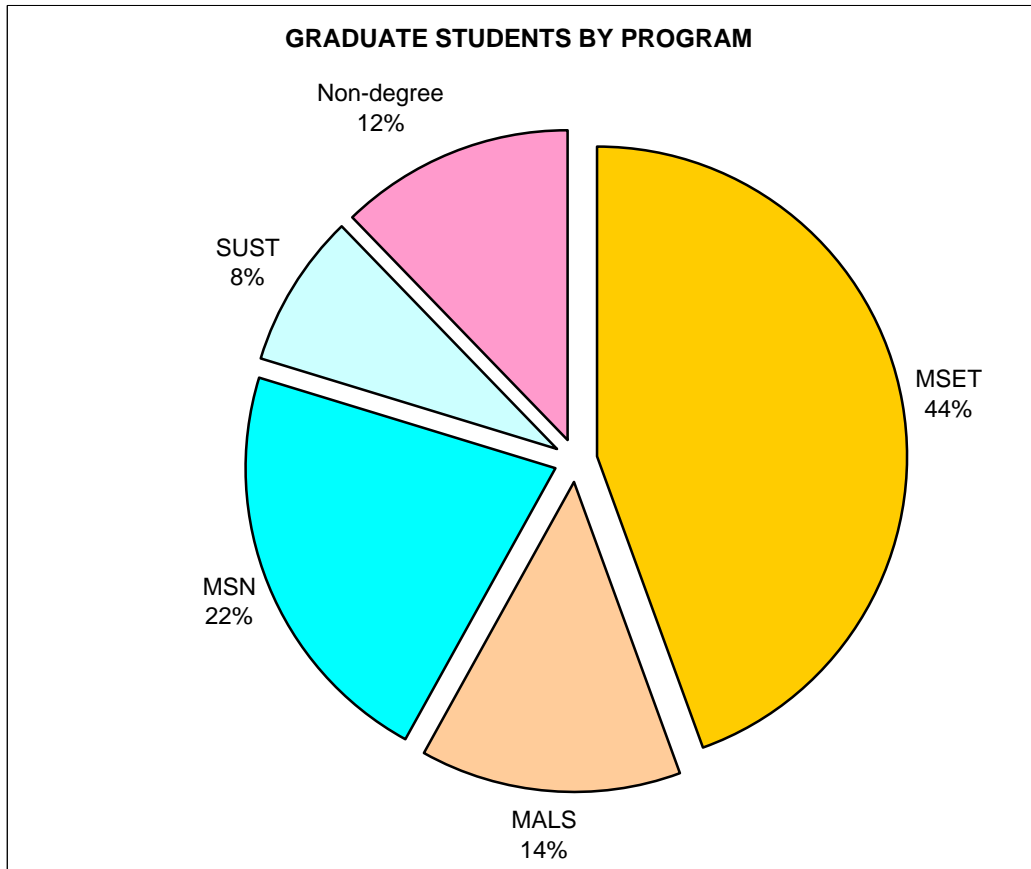


Primary Major and Concentration	Fall 2006		Fall 2007		Fall 2008		Fall 2009		Fall 2010		Percent Change 06 to 10	Percent Change 09 to 10
	% of Maj	No.	% of Maj	No.	% of Maj	No.	% of Maj	No.	% of Maj	No.		
<b>Allied Health</b>												
Diagnostic Medical Sonography	--	0.0%	--	0.0%	2	0.5%	3	0.7%	3	0.8%	N/A	0.0%
Nuclear Medicine Technology	--	0.0%	--	0.0%	1	0.3%	1	0.2%	0	0.0%	N/A	-100.0%
Respiratory Care	--	0.0%	--	0.0%	1	0.3%	1	0.2%	0	0.0%	N/A	-100.0%
Unspecified	10	3.4%	14	4.1%	14	3.8%	12	2.9%	7	1.8%	-30.0%	-41.7%
<b>Subtotal</b>	<b>10</b>		<b>14</b>		<b>18</b>		<b>17</b>		<b>10</b>		<b>N/A</b>	<b>-41.2%</b>
<b>Biology</b>												
Physician's Assistant	11	3.8%	15	4.4%	20	5.4%	20	4.9%	14	3.6%	27.3%	-30.0%
Physical Therapy	52	17.9%	49	14.4%	58	15.8%	52	12.8%	51	13.0%	-1.9%	-1.9%
Chiropractic	1	0.3%	3	0.9%	3	0.8%	3	0.7%	0	0.0%	-100.0%	-100.0%
Dental	6	2.1%	14	4.1%	22	6.0%	24	5.9%	28	7.1%	366.7%	16.7%
Optometry	1	0.3%	3	0.9%	5	1.4%	4	1.0%	4	1.0%	300.0%	0.0%
Podiatry	--	--	--	--	--	--	2	0.5%	2	0.5%	N/A	N/A
Unspecified	219	75.5%	256	75.3%	259	70.6%	302	74.2%	293	74.7%	33.8%	-3.0%
<b>Subtotal</b>	<b>290</b>		<b>340</b>		<b>367</b>		<b>407</b>		<b>392</b>		<b>N/A</b>	<b>-3.7%</b>
<b>Business Administration</b>												
Finance	137	47.2%	152	44.7%	170	46.3%	166	40.8%	154	39.3%	12.4%	-7.2%
Management	240	82.8%	237	69.7%	245	66.8%	220	54.1%	221	56.4%	-7.9%	0.5%
Marketing	168	57.9%	206	60.6%	226	61.6%	208	51.1%	210	53.6%	25.0%	1.0%
Unspecified	30	10.3%	41	12.1%	111	30.2%	137	33.7%	114	29.1%	280.0%	-16.8%
<b>Subtotal</b>	<b>575</b>		<b>636</b>		<b>752</b>		<b>731</b>		<b>699</b>		<b>21.6%</b>	<b>-4.4%</b>
<b>Clinical Lab Science</b>												
Cytotechnology	--	0.0%	--	0.0%	2	0.5%	2	0.5%	0	0.0%	N/A	-100.0%
Medical Lab Science	--	0.0%	--	0.0%	--	0.0%	1	0.2%	2	0.5%	N/A	100.0%
Unspecified	11	3.8%	9	2.6%	9	2.5%	9	2.2%	7	1.8%	-36.4%	-22.2%
<b>Subtotal</b>	<b>11</b>		<b>9</b>		<b>11</b>		<b>12</b>		<b>9</b>		<b>N/A</b>	<b>-25.0%</b>
<b>Communication Arts</b>												
Design & Interactive Media	53	12.0%	58	14.8%	80	19.8%	98	22.3%	90	20.4%	69.8%	-8.2%
Digital Filmmaking	66	14.9%	46	11.8%	56	13.9%	62	14.1%	63	14.3%	-4.5%	1.6%
Graphic Design	3	0.7%	--	--	--	--	--	--	--	--	N/A	N/A
Interdisciplinary	1	0.2%	--	--	--	--	--	--	--	--	N/A	N/A
Journalism	59	13.3%	60	15.3%	69	17.1%	79	18.0%	90	20.4%	52.5%	13.9%
Media & Cinema Studies	102	23.0%	76	19.4%	82	20.3%	82	18.6%	79	17.9%	-22.5%	-3.7%
Writing	33	7.4%	39	10.0%	38	9.4%	41	9.3%	46	10.4%	39.4%	12.2%
Unspecified	126	28.4%	112	28.6%	79	19.6%	78	17.7%	74	16.7%	-41.3%	-5.1%
<b>Subtotal</b>	<b>443</b>		<b>391</b>		<b>404</b>		<b>440</b>		<b>442</b>		<b>-0.2%</b>	<b>0.5%</b>
<b>Music</b>												
Music Industry	11	2.8%	16	22.5%	16	22.9%	25	34.7%	38	35.2%	245.5%	52.0%
Music Performance	8	2.1%	3	4.2%	7	10.0%	11	15.3%	10	9.3%	25.0%	-9.1%
Music Production	6	1.5%	9	12.7%	15	21.4%	14	19.4%	36	33.3%	500.0%	157.1%
Music Studies	8	2.1%	3	4.2%	2	2.9%	1	1.4%	4	3.7%	-50.0%	300.0%
Unspecified	29	7.5%	40	56.3%	30	42.9%	21	29.2%	20	18.5%	-31.0%	-4.8%
<b>Subtotal</b>	<b>62</b>		<b>71</b>		<b>70</b>		<b>72</b>		<b>108</b>		<b>74.2%</b>	<b>50.0%</b>
<b>Nursing</b>												
RN/BSN	97	25.0%	76	18.7%	89	21.1%	62	14.2%	60	14.2%	-38.1%	-3.2%
Generic BSN	291	75.0%	331	81.3%	332	78.9%	376	85.8%	362	85.8%	24.4%	-3.7%
<b>Subtotal</b>	<b>388</b>		<b>407</b>		<b>421</b>		<b>438</b>		<b>422</b>		<b>8.8%</b>	<b>-3.7%</b>
<b>Social Science</b>												
Africana Studies	2	10.0%	1	4.2%	0	0.0%	0	0.0%	0	0.0%	-100.0%	N/A
Community Mental Health	4	20.0%	4	16.7%	4	9.1%	13	26.5%	21	37.5%	425.0%	61.5%
Criminology [1]	--	--	--	--	--	--	1	2.0%	2	3.6%	N/A	100.0%
Cultural Studies	2	10.0%	2	8.3%	0	0.0%	0	0.0%	0	0.0%	-100.0%	N/A
Ethnic Relations	1	5.0%	0	0.0%	0	0.0%	0	0.0%	0	0.0%	-100.0%	N/A
Gender Studies	1	5.0%	1	4.2%	0	0.0%	0	0.0%	1	1.8%	0.0%	N/A
Labor Studies	--	0.0%	0	0.0%	0	0.0%	0	0.0%	1	1.8%	N/A	N/A
Unspecified	10	50.0%	16	66.7%	40	90.9%	35	71.4%	31	55.4%	210.0%	-11.4%
<b>Subtotal</b>	<b>20</b>		<b>24</b>		<b>44</b>		<b>49</b>		<b>56</b>		<b>N/A</b>	<b>14.3%</b>
<b>Theater</b>												
Acting	16	39.0%	20	37.0%	23	46.0%	16	35.6%	30	45.5%	87.5%	87.5%
Design/Technical Theater	3	7.3%	2	3.7%	3	6.0%	6	13.3%	10	15.2%	233.3%	66.7%
Directing/Stage Mgmt.	3	7.3%	3	5.6%	3	6.0%	4	8.9%	6	9.1%	100.0%	50.0%
Theater Studies	--	--	1	1.9%	1	2.0%	4	8.9%	5	7.6%	N/A	25.0%
Unspecified	19	46.3%	28	51.9%	20	40.0%	15	33.3%	15	22.7%	-21.1%	0.0%
<b>Subtotal</b>	<b>41</b>		<b>54</b>		<b>50</b>		<b>45</b>		<b>66</b>		<b>N/A</b>	<b>46.7%</b>
<b>Visual Arts</b>												
Art History	5	4.5%	5	4.1%	4	3.4%	4	4.5%	4	4.2%	-20.0%	0.0%
Drawing and Painting	30	27.0%	25	20.5%	27	23.1%	17	19.1%	27	28.1%	-10.0%	58.8%
New Media (Art & Technology)	4	3.6%	1	0.8%	2	1.7%	4	4.5%	8	8.3%	100.0%	100.0%
Photography	8	7.2%	6	4.9%	12	10.3%	7	7.9%	26	27.1%	225.0%	271.4%
Sculpture	5	4.5%	3	2.5%	2	1.7%	1	1.1%	4	4.2%	-20.0%	300.0%
Unspecified	59	53.2%	82	67.2%	70	59.8%	56	62.9%	27	28.1%	-54.2%	-51.8%
<b>Subtotal</b>	<b>111</b>		<b>122</b>		<b>117</b>		<b>89</b>		<b>96</b>		<b>-13.5%</b>	<b>7.9%</b>

[1] A Criminology program is also offered in the major Law and Society (a new major as of fall 2006).

TOTAL FALL 2010 ENROLLMENT = 6,008  
GRADUATE STUDENT ENROLLMENTS BY PROGRAM

Business Administration	0	0.0%
Educational Technology	94	44.3%
Liberal Studies	29	13.7%
Nursing	46	21.7%
Sustainability Studies	17	8.0%
Non-degree-seeking programs	26	12.3%
	<b>212</b>	



**GRADUATE ENROLLMENT BY PROGRAM, FALL 2006 TO FALL 2010**

Program	Fall 2006		Fall 2007		Fall 2008		Fall 2009		Fall 2010		Percent Change 06 to 10	Percent Change 09 to 10
	No.	Pct.	No.	Pct.	No.	Pct.	No.	Pct.	No.	Pct.		
Liberal Studies	33	10.6%	31	10.0%	38	13.3%	36	14.4%	29	13.7%	-12.1%	-19.4%
Educational Technology	107	34.4%	150	48.5%	141	49.3%	139	55.6%	94	44.3%	-12.1%	-32.4%
Business Administration <sup>[1]</sup>	10	3.2%	7	2.3%	7	2.4%	--	0.0%	0	0.0%	N/A	N/A
Nursing	44	14.1%	45	14.6%	39	13.6%	38	15.2%	46	21.7%	4.5%	21.1%
Sustainability Studies <sup>[2]</sup>	--	0.0%	--	0.0%	--	0.0%	--	0.0%	17	8.0%	N/A	N/A
Non-degree-seeking	117	37.6%	76	24.6%	61	21.3%	37	14.8%	26	12.3%	-77.8%	-29.7%
<b>Total</b>	<b>311</b>		<b>309</b>		<b>286</b>		<b>250</b>		<b>212</b>		<b>-31.8%</b>	<b>-15.2%</b>



**GRADUATE NONDEGREE-SEEKING STUDENTS BY AFFILIATION, FALL 2006 TO FALL 2010**

Program	Fall 2006		Fall 2007		Fall 2008		Fall 2009		Fall 2010		Percent Change 06 to 10	Percent Change 09 to 10
	No.	Pct.	No.	Pct.	No.	Pct.	No.	Pct.	No.	Pct.		
Nondegree-seeking - Liberal Studies	1	0.9%	5	6.6%	5	8.2%	3	8.1%	2	10.5%	100.0%	-33.3%
Nondegree-seeking - Educational Technology	116	99.1%	69	90.8%	55	90.2%	33	89.2%	16	84.2%	-86.2%	-51.5%
Nondegree-seeking - MBA <sup>[1]</sup>	0	0.0%	0	0.0%	0	0.0%	--	0.0%	--	0.0%	N/A	N/A
Nondegree-seeking - Nursing	0	0.0%	2	2.6%	1	1.6%	1	2.7%	1	5.3%	N/A	0.0%
Nondegree-seeking - Sustainability Studies <sup>[2]</sup>	--	--	--	--	--	--	--	--	0	0.0%	N/A	N/A
Nondegree-seeking - Affiliation Unspecified	0	0.0%		0.0%	0	0.0%	0	0.0%	0	0.0%	N/A	N/A
<b>Total</b>	<b>117</b>		<b>76</b>		<b>61</b>		<b>37</b>		<b>19</b>		<b>-83.8%</b>	<b>-48.6%</b>

[1] As of F09 there are no more MBA students enrolled; program was temporarily suspended.

[2] The Master of Arts in Sustainability Studies program opened to enrollment in spring 2010.

**ACADEMIC YEAR HEADCOUNT ENROLLMENT, 2005-06 TO 2009-10**

Semester/Session	2005-06 No.	2006-07 No.	2007-08 No.	2008-09 No.	2009-10 No.	Percent Change 05/06 to 09/10	Percent Change 08/09 to 09/10
Fall	5,538	5,499	5,702	5,847	6,026	8.8%	3.1%
Spring	5,281	5,247	5,435	5,625	5,785	9.5%	2.8%
<i>Annualized [1]</i>	5,410	5,373	5,569	5,736	5,906	9.2%	3.0%
Summer [2]	1,752	1,634	1,506	1,682	1,800	2.7%	7.0%
Winter [3]	614	N/A	N/A	193	192	-68.7%	-0.5%
<b>Unduplicated Total [4]</b>	<b>6,671</b>	<b>6,675</b>	<b>6,720</b>	<b>6,883</b>	<b>7,010</b>	<b>5.1%</b>	<b>1.8%</b>

[1] Calculated by summing the Fall and Spring enrollments and dividing by 2.

This is an unduplicated count of the total number of individuals who took at least one course at the College during the academic year.

[2] Counts are from the summer prior to the academic year so that the 2009-10 academic year covers Summer 2009, Fall 2009, Winter 2010, and Spring 2010.

[3] The last winter semester of courses held on campus was W06. There were no W07 nor W08 courses. In W09, students enrolled in online courses.

[4] This is an unduplicated count of the total number of individuals who took at least one course at the college during the academic year.

**ACADEMIC YEAR FTE'S HEADCOUNT ENROLLMENT, 2005-06 TO 2009-10**

Semester/Session	2005-06 No.	2006-07 No.	2007-08 No.	2008-09 No.	2009-10 No.	Percent Change 05/06 to 09/10	Percent Change 08/09 to 09/10
Fall	4,733	4,886	5,043	5,197	5,453	15.2%	4.9%
Spring	4,390	4,545	4,801	4,997	5,195	18.3%	4.0%
<i>Annualized [1]</i>	4,562	4,716	4,922	5,097	5,324	16.7%	4.5%
Summer [2]	288	271	298	322	355	23.3%	10.2%
Winter [3]	73	N/A	N/A	24	23	-68.5%	-4.2%

[1] Calculated by summing the Fall and Spring enrollments and dividing by 2.

This is an unduplicated count of the total number of individuals who took at least one course at the College during the academic year.

[2] Counts are from the summer prior to the academic year so that the 2009-10 academic year covers Summer 2009, Fall 2009, Winter 2010, and Spring 2010.

[3] There were no courses in winter 2007, nor winter 2008.