

SECTION VI:

STUDENT SERVICES

2009 INSTITUTIONAL PROFILE

CAHILL CENTER^[1]

COOPERATIVE EDUCATION

	04/05	05/06	06/07	07/08	08/09	Percent Change 04/05 to 08/09	Percent Change 07/08 to 08/09
Number of Employers	249	277	256	268	202	-18.9%	-24.6%
Number of Students:							
Female	198	216	157	167	135	-31.8%	-19.2%
Male	<u>129</u>	<u>132</u>	<u>148</u>	<u>124</u>	<u>95</u>	<u>-26.4%</u>	<u>-23.4%</u>
Total Students	327	348	305	291	230	-29.7%	-21.0%
Dollars Earned	\$1,105,414	\$1,051,361	\$806,095	\$783,711	\$413,534	-62.6%	-47.2%
Credits Earned	1,218	1,413	1,250	1,164	920	-24.5%	-21.0%

CAREER SERVICES

	04/05	05/06	06/07	07/08	08/09	Percent Change 04/05 to 08/09	Percent Change 07/08 to 08/09
Course Participants	133	143	160	172	219	64.7%	27.3%
Job Fair Participants	900	600	600	550	700	-22.2%	27.3%

STUDENT ASSISTANT PROGRAM

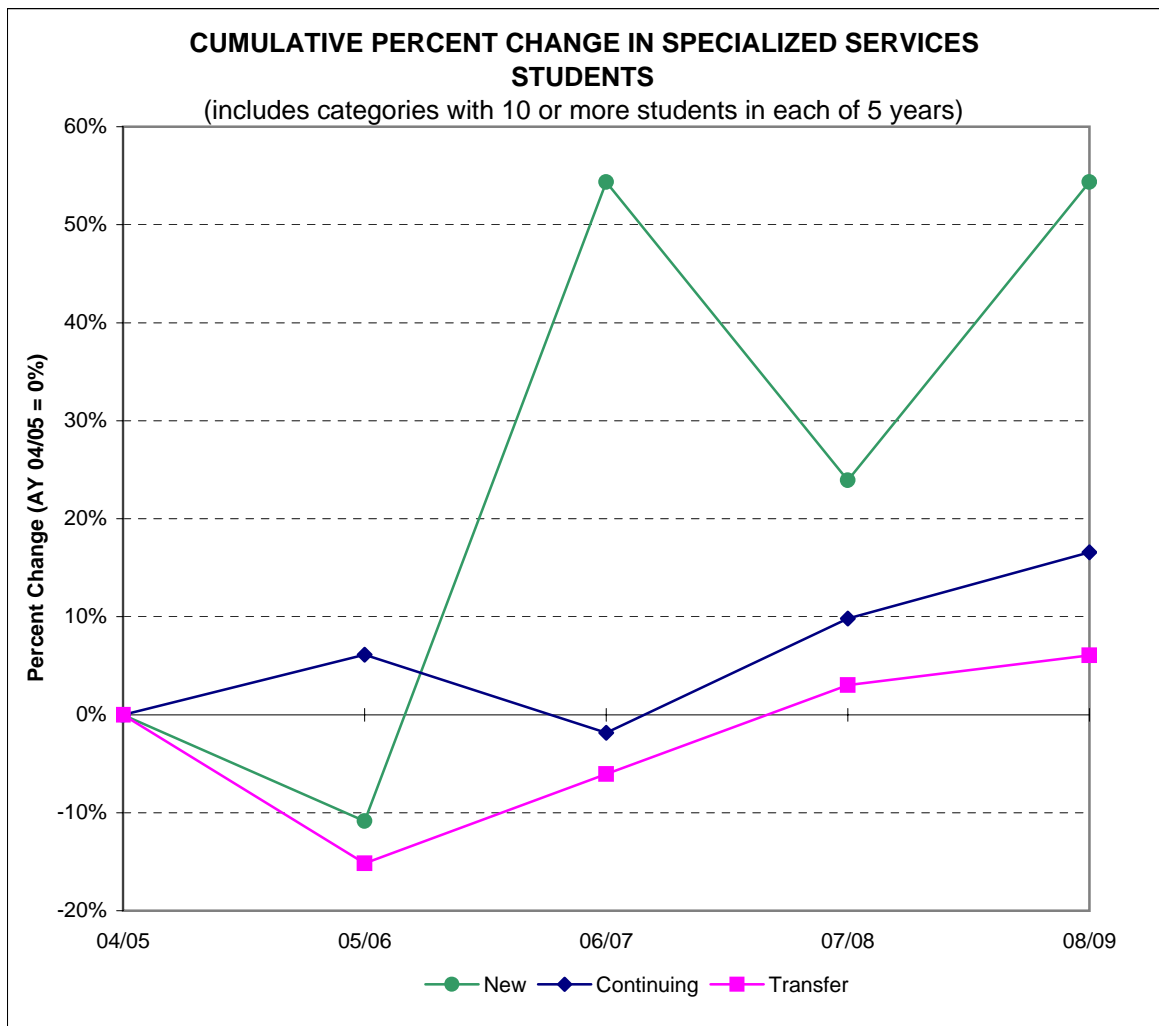
	04/05	05/06	06/07	07/08	08/09	Percent Change 04/05 to 08/09	Percent Change 07/08 to 08/09
Student Workers [2]	782	739	782	802	824	5.4%	2.7%

[1] This information is not system generated. Data is self-reported by unit.

[2] The Cahill Center acquired responsibility in 2002 for managing students assigned to perform special projects for faculty.

SPECIALIZED SERVICES ^[1]

Students	04/05	05/06	06/07	07/08	08/09	Percent Change	Percent Change
						04/05 to 08/09	07/08 to 08/09
New [2]	46	41	71	57	71	54.3%	24.6%
Continuing	163	173	160	179	190	16.6%	6.1%
Transfer	33	28	31	34	35	6.1%	2.9%
Re-Admits	1	1	2	1	0	-100.0%	-100.0%
Total	243	243	264	271	296	21.8%	9.2%

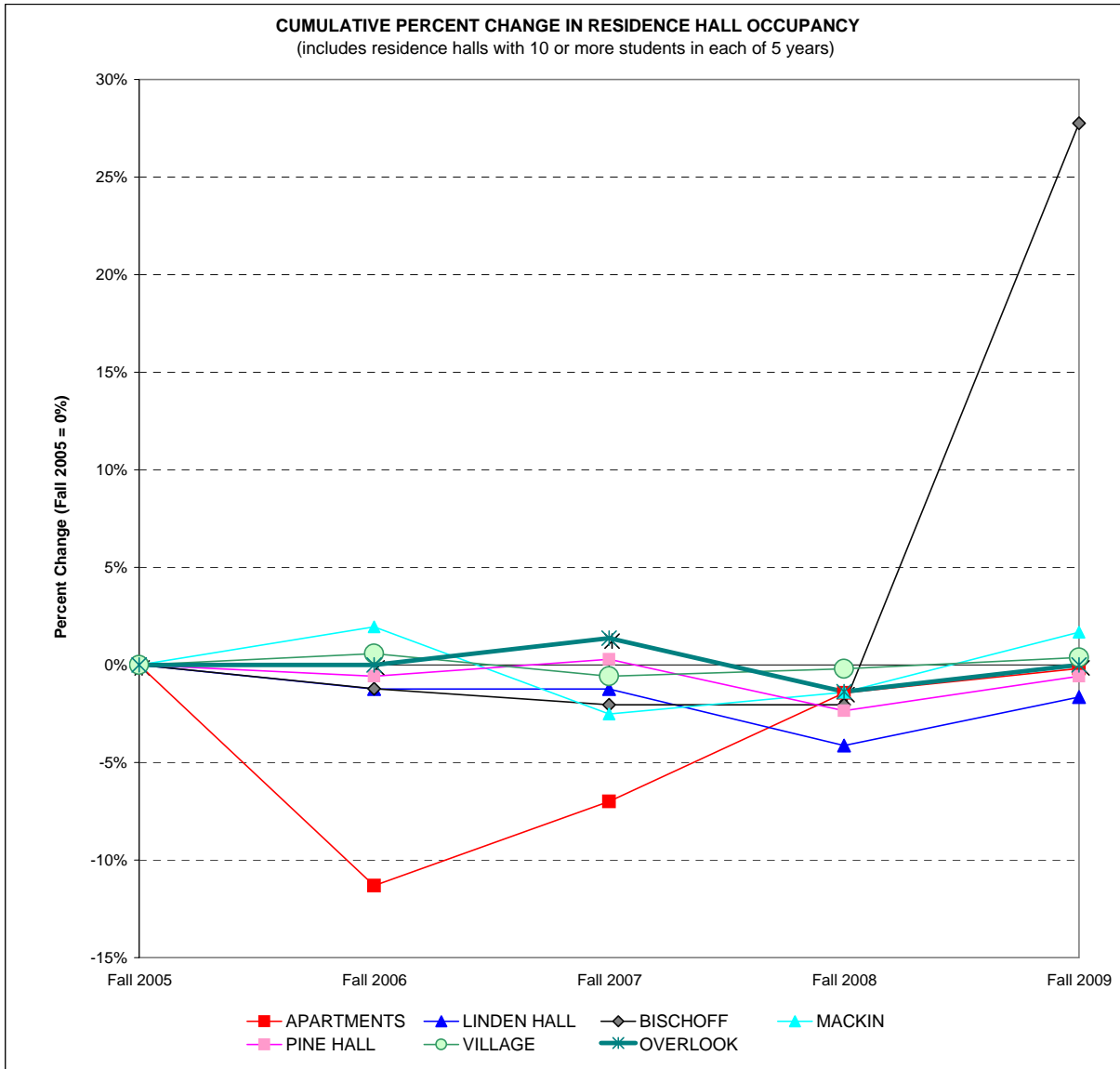


[1] This information is not system-generated. Data is self-reported by unit.

[2] Includes students already enrolled at Ramapo College for one or more semesters, but new to the Office of Specialized Services, and new first-time freshmen.

FALL SEMESTER RESIDENCE HALL OCCUPANCY, 2005 TO 2009^[1]

	Fall 2005		Fall 2006		Fall 2007		Fall 2008		Fall 2009		Percent Change 05 to 09	Percent Change 08 to 09
	Number	Percent	Number	Percent	Number	Percent	Number	Percent	Number	Percent		
APARTMENTS	557	21.8%	494	17.9%	518	17.7%	549	18.3%	556	18.2%	-0.2%	1.3%
LINDEN HALL	242	9.5%	239	8.7%	239	8.2%	232	7.7%	238	7.8%	-1.7%	2.6%
BISCHOFF ^[2]	245	9.6%	242	8.8%	240	8.2%	240	8.0%	313 ^[2]	10.3%	27.8%	30.4%
MACKIN ^[2]	358	14.0%	365	13.3%	349	11.9%	353	11.8%	364	11.9%	1.7%	3.1%
PINE HALL	341	13.4%	339	12.3%	342	11.7%	333	11.1%	339	11.1%	-0.6%	1.8%
OVERFLOW/HOTEL	-	-	-	-	-	-	59	2.0%	-	N/A	N/A	N/A
VILLAGE	520	20.4%	523	19.0%	517	17.7%	519	17.3%	522	17.1%	0.4%	0.6%
THE OVERLOOK	290	11.4%	290	10.5%	294	10.0%	286	9.5%	290	9.5%	0.0%	1.4%
LAUREL HALL	-	-	262	9.5%	430	14.7%	432	14.4%	430	14.1%	N/A	-0.5%
TOTAL	2,553		2,754		2,929		3,003		3,052		19.5%	1.6%



[1] Occupancy as of the 10th day of the semester as reported in the Registrar's official file.

[2] Late 2008, Oak Hall was renamed Bischoff Hall and Maple Hall was renamed Mackin Hall.

[3] For fall 2009, Bischoff Hall suites were reconfigured to house TRIPLES on floors 3-5 and DBLS on floors 1 & 2.

FINANCING FOR RESIDENCE LIFE, STUDENT CENTER, AND EDUCATIONAL PROJECTS ^{[1] [2]}

<u>Facilities Bond</u>	<u>Name</u>	Outstanding	Outstanding	Outstanding	Outstanding	Outstanding	<u>Year Paid in Full</u>
		Principal Payments Jun-05 <u>(000)</u>	Principal Payments Jun-06 <u>(000)</u>	Principal Payments Jun-07 <u>(000)</u>	Principal Payments Jun-08 <u>(000)</u>	Principal Payments Jun-09 <u>(000)</u>	
<u>Residence Life</u>							
Series 1973A	Phase I	\$0	\$0	\$0	\$0	\$0	2003
Series 1998G	Oak Hall/Pavilion	\$15,155	\$14,790	\$14,420	\$14,035	\$13,635	2028
Series 1999E [3]	Maple Hall/Pavilion Expansion	\$2,065	\$1,690	\$1,300	\$890	\$455	2029
Series 2001D [4]	The Village/Apt. Wiring	\$39,735	\$38,965	\$6,040	\$6,040	\$6,040	2031
Series 2002H [4]	Village Completion/Overlook	\$28,580	\$28,000	\$18,610	\$18,610	\$18,230	2032
Series 2003G [3]	Pine & Linden	\$9,300	\$9,185	\$7,875	\$6,540	\$5,175	2013
Series 2003H [3]	Oak Hall/Pavilion/Phase I Renov.	\$18,930	\$18,930	\$18,930	\$18,915	\$18,775	2029
Series 2004E [4]	Laurel Hall	\$44,350	\$44,350	\$10,575	\$10,575	\$10,575	2035
Series 2006I [4]	Advance Refunding of Bond Issues	\$0	\$0	\$80,326	\$80,326	\$80,296	2036
<u>Student Center</u>							
Series 1998H	Student Center Renovations	\$1,385	\$1,255	\$1,120	\$980	\$835	2013
Series 2002I [4]	Student Center Renovations	\$2,045	\$2,005	\$1,345	\$1,345	\$1,300	2032
Series 2003F	Student Center Annex	\$1,820	\$1,810	\$1,615	\$1,400	\$1,185	2013
Series 2006I [4]	Advance Refunding of Bond Issues	\$0	\$0	\$625	\$625	\$625	2036
<u>Educational & General</u>							
Series 1998I	Voice, Video, Data	\$450	\$345	\$235	\$120	\$0	2008
Series 2000B	Higher Ed Capital Bond Fund	\$2,218	\$2,126	\$2,030	\$1,928	\$1,822	2021
Series 2001A	Dormitory Safety	\$757	\$688	\$619	\$551	\$482	2016
Series 2001E	Sustainability Center/Equip.	\$1,535	\$1,170	\$795	\$405	\$0	2008
Series 2002A	Higher Ed Capital Bond Fund	\$1,850	\$1,850	\$1,796	\$1,739	\$1,680	2023
Series 2002J [4]	Bradley Center/Havemeyer House	\$29,550	\$28,945	\$19,495	\$19,495	\$18,850	2032
Series 2003A	Equipment Leasing Fund	\$394	\$320	\$244	\$167	\$85	2010
Series 2004E [4]	Loop Road/Parking Garage	\$9,630	\$9,630	\$3,105	\$3,105	\$3,105	2035
Series 2006D [4]	Sustainability Center Completion	\$0	\$49,085	\$37,940	\$37,940	\$37,940	2036
Series 2006I [4]	Advance Refunding of Bond Issues	\$0	\$0	\$25,869	\$25,869	\$25,869	2036
		<u>\$209,749</u>	<u>\$255,139</u>	<u>\$254,909</u>	<u>\$251,600</u>	<u>\$246,959</u>	

[1] This information is not system-generated. Data is self-reported by unit.

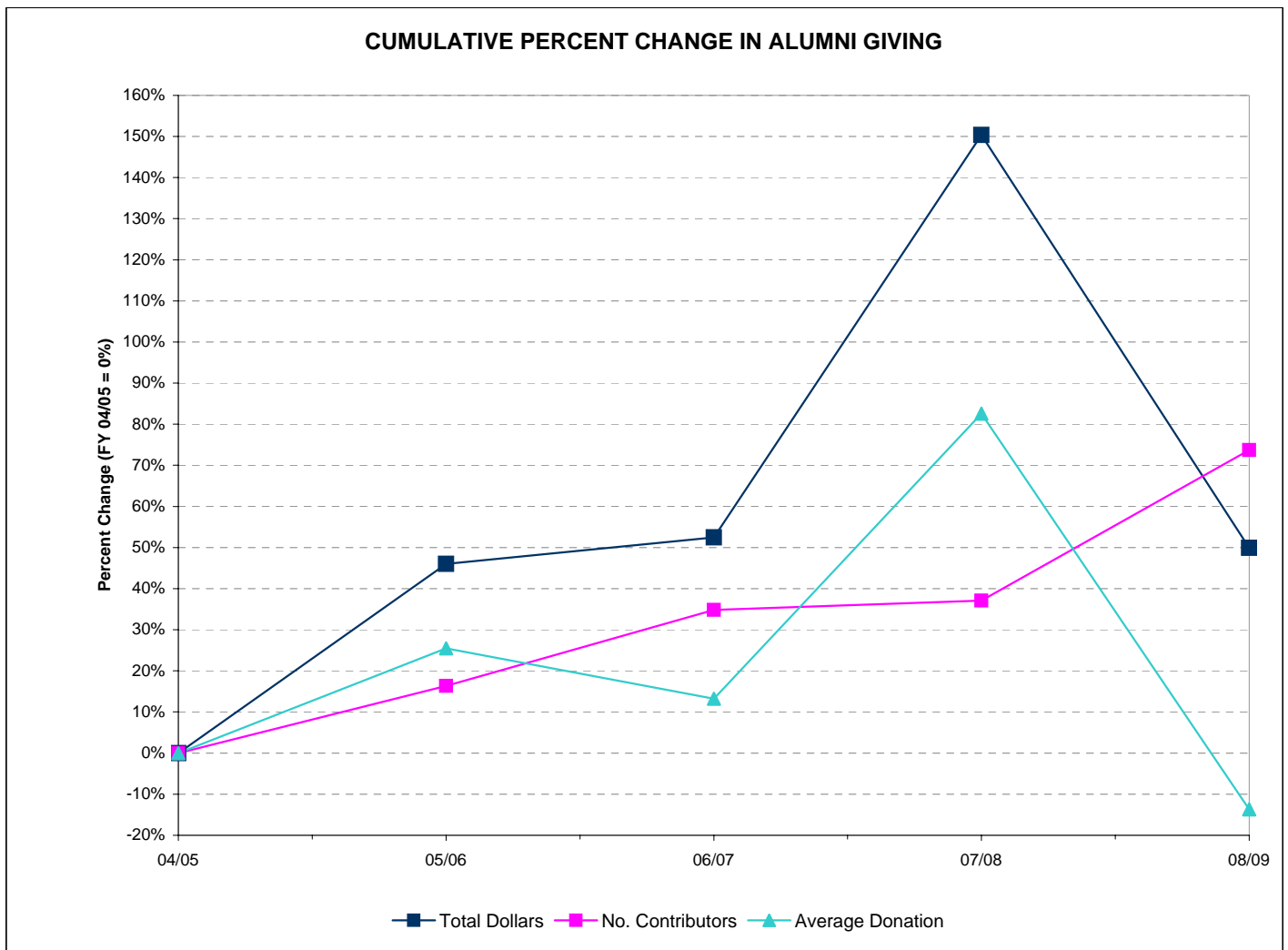
[2] The College has pledged all revenues generated from the operation of the residential facilities, the student center building and from other legally available funds of the College under the aforementioned capital lease agreements.

[3] Series 2003H partially replaced series 1999E through refinancing.

[4] Series 2006I partially replaced series 2001D, 2002H, 2002I, 2002J, 2004E, 2006D through refinancing.

ALUMNI GIVING, FISCAL YEAR 2005 TO FISCAL YEAR 2009^[1]

Giving	04/05	05/06	06/07	07/08	08/09	Percent Change	Percent Change
						04/05 to 08/09	07/08 to 08/09
Total Dollars	\$128,918	\$188,211	\$196,560	\$322,742	\$193,263	49.9%	-40.1%
Number of Donors	1,851	2,153	2,496	2,538	3,216	73.7%	26.7%
Average Alumni Donation	\$69.65	\$87.42	\$78.85	\$127.16	\$60.09	-13.7%	-52.7%
Number of Alumni Solicited	16,574	17,886	18,224	18,982	20,550	24.0%	8.3%
Phonathon New Donors ^[2]	353	104	135	31	26	-92.6%	-16.1%



[1] This information is not system-generated. Data is self-reported by unit.

[2] Decrease in FY06-07 and FY07-08 due to strategic change in phonathon target a smaller group of no-donor alumni

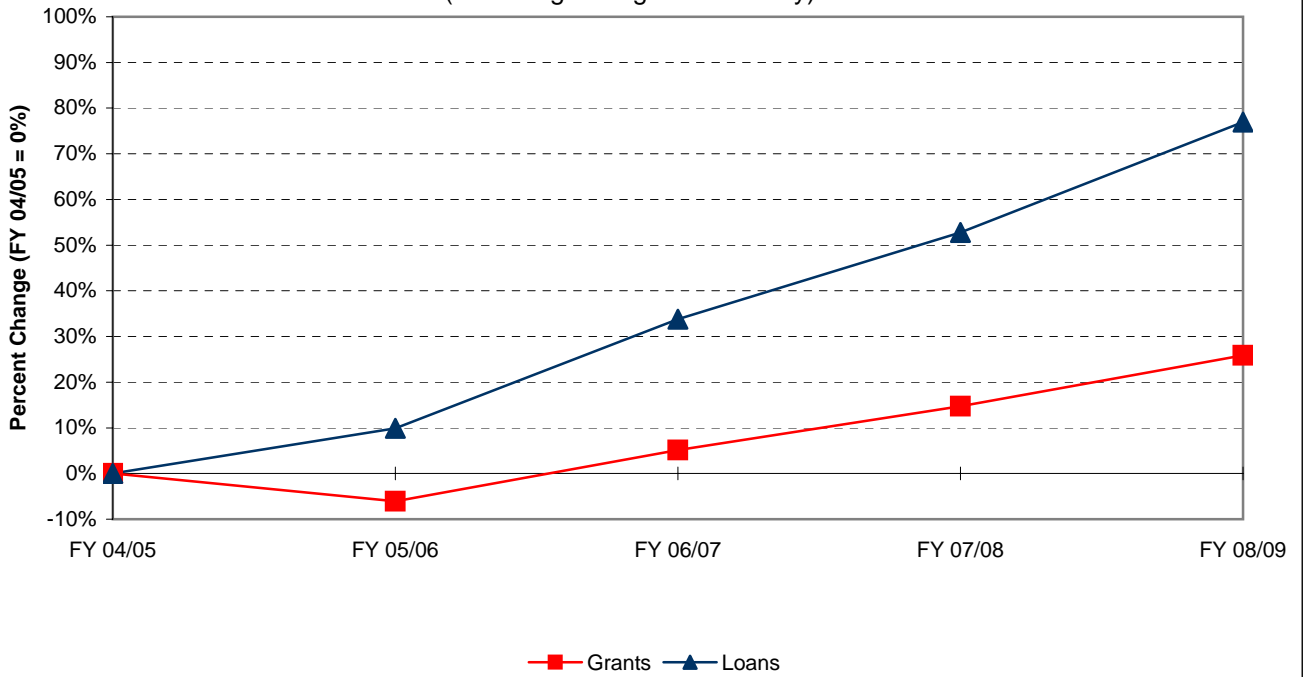
STUDENT FINANCIAL AID, FY 2005 TO FY 2009^[1]

<i>Financial Aid Dollars</i>	FY 04/05	FY 05/06	FY 06/07	FY 07/08	FY 08/09	Percent Change	Percent Change
	\$	\$	\$	\$	\$	04/05 to 08/09	07/08 to 08/09
Pell Grants	\$2,473,848	\$2,387,812	\$2,508,197	\$2,847,105	\$3,325,045	34.4%	16.8%
College Work Study	\$231,882	\$192,715	\$204,224	\$186,965	\$209,486	-9.7%	12.0%
Perkins Loans	\$189,259	\$124,272	\$191,500	\$204,100	\$139,800	-26.1%	-31.5%
Stafford Loans (total)	\$11,027,934	\$10,695,474	\$11,910,750	\$13,768,187	\$17,125,718	55.3%	24.4%
Subsidized	\$6,997,434	\$6,712,707	\$7,212,263	\$8,709,543	\$9,501,421	35.8%	9.1%
Un-subsidized	\$4,030,500	\$3,982,767	\$4,698,487	\$5,058,644	\$7,624,297	89.2%	50.7%
SEOG	\$239,269	\$226,202	\$242,195	\$252,875	\$228,600	-4.5%	-9.6%
Parents Loans for Dependent Students	\$3,336,712	\$4,252,088	\$5,712,189	\$5,684,973	\$5,883,041	76.3%	3.5%
Ramapo College Grants (total)	\$5,203,193	\$4,439,901	\$5,230,342	\$5,662,055	\$5,978,243	14.9%	5.6%
EOF	\$419,534	\$374,863	\$418,533	\$407,106	\$416,408	-0.7%	2.3%
Non-EOF	\$1,767	\$9,703	\$0	\$0	\$1,888	6.8%	N/A
Institutional Grants	\$4,781,892	\$4,055,335	\$4,811,809	\$5,254,949	\$5,559,947	16.3%	5.8%
TAG	\$2,983,577	\$3,098,991	\$3,463,340	\$3,718,608	\$4,210,942	41.1%	13.2%
Educational Opportunity Fund (EOF)	\$311,800	\$381,067	\$347,085	\$379,728	\$368,958	18.3%	-2.8%
New Jersey Class Loans	\$3,232,706	\$3,034,650	\$4,220,429	\$5,868,664	\$6,615,847	104.7%	12.7%
Private Loans	\$1,566,375	\$3,163,450	\$3,861,299	\$4,040,481	\$4,476,162	185.8%	10.8%
Total	\$30,796,555	\$31,996,622	\$37,891,550	\$42,613,741	\$48,561,842	57.7%	14.0%

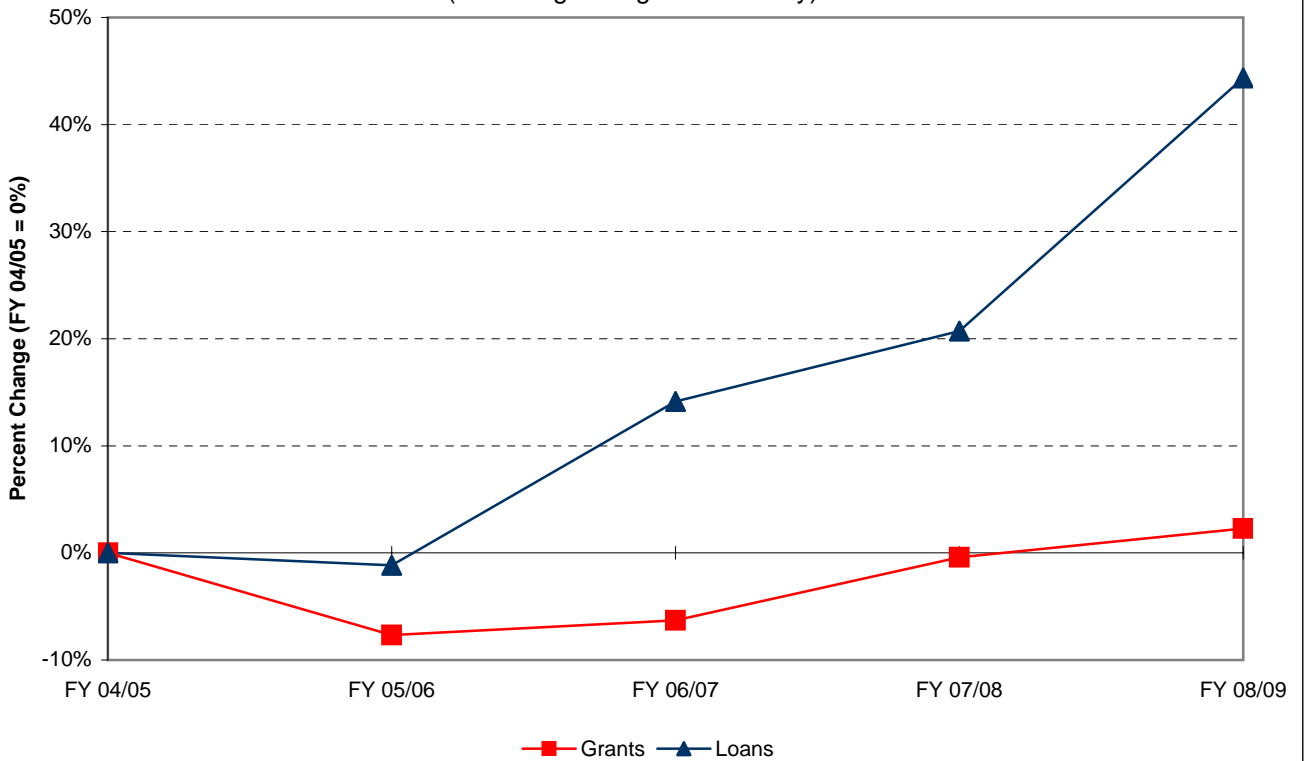
<i>Financial Aid Recipients</i>	FY 04/05	FY 05/06	FY 06/07	FY 07/08	FY 08/09	Percent Change	Percent Change
	#	#	#	#	#	04/05 to 08/09	07/08 to 08/09
Pell Grants	942	907	900	978	1,011	7.3%	3.4%
College Work Study	197	149	129	125	117	-40.6%	-6.4%
Perkins Loans	147	103	147	153	109	-25.9%	-28.8%
Stafford Loans (total)	2,909	2,783	3,210	3,356	4,253	46.2%	26.7%
Subsidized	1,839	1,762	1,972	2,098	2,278	23.9%	8.6%
Un-subsidized	1,070	1,021	1,238	1,258	1,975	84.6%	57.0%
SEOG	273	238	271	288	259	-5.1%	-10.1%
Parents Loans for Dependent Students	420	462	523	516	537	27.9%	4.1%
Ramapo College Grants (total)	753	643	650	703	714	-5.2%	1.6%
EOF	124	115	123	149	147	18.5%	-1.3%
Non-EOF	1	4	0	0	2	100.0%	N/A
Institutional Grants	628	524	527	554	565	-10.0%	2.0%
TAG	865	811	822	851	915	5.8%	7.5%
Educational Opportunity Fund (EOF)	274	270	268	274	279	1.8%	1.8%
New Jersey Class Loans	369	310	358	468	496	34.4%	6.0%
Private Loans	178	318	354	364	412	131.5%	13.2%
Total	7,327	6,994	7,632	8,076	9,102	24.2%	12.7%

[1] This information is not system-generated. Data is self-reported by unit.

CUMULATIVE PERCENT CHANGE IN FINANCIAL AID DOLLARS BY SOURCE
(excluding College Work Study)



CUMULATIVE PCT. CHANGE IN NO. OF FINANCIAL AID RECIPIENTS BY SOURCE
(excluding College Work Study)



CAMPUS SECURITY ANNUAL REPORT^[1]

Reported Occurrences	2004	2005	2006	2007	2008	Percent Change	Percent Change
						2004 to 2008	2007 to 2008
Criminal Homicide	0	0	0	0	0	N/A	N/A
<i>Sexual Offenses:</i>							
Forcible: Rape, Sodomy, Assault (with an object), Fondling	5	13 ^[4]	4 ^[2]	5	7	40.0%	40.0%
Non-Forcible: Incest, Statutory Rape	0	0	0	0	0	N/A	N/A
Robbery	0	1	0	0	0	N/A	N/A
Aggravated Assault	0	2	0	0	1	N/A	N/A
Burglary	8	19	19	11	8	0.0%	-27.3%
Motor Vehicle Theft	0	0	5 ^[3]	2	2	N/A	0.0%
Arson	0	0	1	8 ^[5]	2	N/A	-75.0%
Hate Crimes	0	0	0	0	0	N/A	N/A
Arrests:							
Weapon Law Violation	0	1	1	0	1	N/A	N/A
Drug Abuse Violation	3	4	10	8	22	633.3%	175.0%
Liquor Law Violation	0	0	0	0	3	N/A	N/A

[1] This information is not system-generated. Data is self-reported by unit. Crime statistics reported using FBI definitions. Figures are the most current available in the Campus Crime Statistics publication of 8/09.

[2] In most incidents, the victim was acquainted with the perpetrator.

[3] All 5 motor vehicle thefts involved golfcarts that were recovered.

[4] Revised count in the Campus Crime Statistics publication of 8/08.

[5] The increased reporting of arsons in this year is due to a requirement by the NJ State Fire Marshal's Office to report all incidents involving the burning of paper and posters on bulletin boards and doors causing minimal to no damage. In the past such incidents were classified by the Mahwah Police Departments as Criminal Damage under the NJ State Crimminal Code.

STUDENT PARTICIPATION IN STUDY ABROAD PROGRAMS, AY 04-05 TO AY 08-09^[1]

2-6 Week Programs	AY 04-05		AY 05-06 ^[6]		AY 06-07 ^[7]		AY 07-08		AY 08-09		Percent Change 04/05 to 08/09	Percent Change 07/08 to 08/09
	Participants		Participants		Participants		Participants		Participants			
	No.	Pct.	No.	Pct.	No.	Pct.	No.	Pct.	No.	Pct.		
American Southwest	19	12.5%	24	22.6%	-	-	-	-	-	-	N/A	N/A
American West	9	5.9%	-	-	-	-	10	15.4%	-	-	N/A	N/A
Austria	-	-	-	-	-	-	1	1.5%	-	-	N/A	N/A
China	-	-	-	-	1	3.4%	7	10.8%	-	-	N/A	N/A
Costa Rica [2]	21	13.8%	-	-	2	6.9%	2	3.1%	-	-	N/A	N/A
Denmark	-	-	-	-	-	-	-	-	1	2.5%	N/A	N/A
England [3]	49	32.2%	65	61.3%	1	3.4%	5	7.7%	4	10.0%	-91.8%	-20.0%
France	-	-	-	-	-	-	-	-	1	2.5%	N/A	N/A
Ireland	-	-	1	0.9%	2	6.9%	8	12.3%	1	2.5%	N/A	-87.5%
Italy	40	26.3%	1	0.9%	6	20.7%	16	24.6%	13	32.5%	-67.5%	-18.8%
Jamaica	-	-	11	10.4%	-	-	-	-	-	-	N/A	N/A
Peru	-	-	-	-	-	-	-	-	1	2.5%	N/A	N/A
Prague (Czech Republic)	8	5.3%	-	-	1	3.4%	2	3.1%	2	5.0%	-75.0%	0.0%
Quebec City	3	2.0%	-	-	1	3.4%	-	-	-	-	N/A	N/A
Scotland	-	-	-	-	-	-	1	1.5%	-	-	N/A	N/A
Spain (with NJSCIS)	-	-	1	0.9%	4	13.8%	13	20.0%	15	37.5%	N/A	15.4%
Washington D.C. Internship [4]	1	0.7%	-	-	-	-	-	-	-	-	N/A	N/A
Other Programs [5]	2	1.3%	3	2.8%	11	37.9%	-	-	2	5.0%	0.0%	N/A
Total	152		106		29		65		40		-73.7%	-38.5%

[1] This data is not system-generated; it is self-reported by the unit. Numbers include Ramapo (& non-Ramapo) students enrolled in at least one course involving a study-abroad destination.

[2] The Costa Rica programs (Intensa Spanish Language, and Eco-Systems) were previously sponsored by Ramapo. As of AY06-07, programs in Costa Rica are sponsored by the NJ State Consortium for International Students (NJSCIS).

[3] The England Regents program ended in AY05-06. Programs in England are now sponsored by the NJSCIS.

[4] The Washington DC program was a credit-bearing semester sponsored by Ramapo.

[5] Prior to 06-07, data represents participation in non-Ramapo sponsored programs. In 08-09, data represents "worldwide" destinations.

[6] Beginning in Spring 2006, Ramapo students participated in programs sponsored by the NJSCIS.

During AY 05-06 only 4 programs were sponsored entirely through Ramapo (American SW, American West, India & Australia).

[7] After Winter 2006, only one program (the India Semester) was offered entirely through Ramapo. Programs continue with the NJSCIS.

Full Semester Programs	F 04 - Spr 05		F 05 - Spr 06		F 06 - Spr 07		F 07 - Spr 08		F 08 - Spr 09		Percent Change 04/05 to 08/09	Percent Change 07/08 to 08/09
	Participants		Participants		Participants		Participants		Participants			
	No.	Pct.	No.	Pct.	No.	Pct.	No.	Pct.	No.	Pct.		
Argentina	-	-	-	-	1	2.3%	-	-	-	-	N/A	N/A
Australia	6	20.7%	10	32.3%	12	27.9%	13	28.3%	8	14.8%	33.3%	-38.5%
China	-	-	-	-	-	-	-	-	1	1.9%	N/A	N/A
Costa Rica	-	-	-	-	-	-	1	2.2%	1	1.9%	N/A	N/A
Czech Republic	-	-	-	-	-	-	1	2.2%	-	-	N/A	N/A
England	3	10.3%	4	12.9%	7	16.3%	3	6.5%	7	13.0%	133.3%	133.3%
France	-	-	-	-	2	4.7%	2	4.3%	4	7.4%	N/A	100.0%
Germany	10	34.5%	-	-	-	-	3	6.5%	-	-	N/A	N/A
India	10	-	14	45.2%	10	23.3%	10	21.7%	13	24.1%	30.0%	30.0%
Ireland	-	-	1	-	2	4.7%	3	6.5%	4	7.4%	N/A	33.3%
Italy	-	-	-	-	2	4.7%	2	4.3%	6	11.1%	N/A	200.0%
Japan	-	-	-	-	2	4.7%	1	2.2%	2	3.7%	N/A	100.0%
Kenya	-	-	-	-	1	2.3%	-	-	-	-	N/A	N/A
Mexico	-	-	-	-	-	-	1	2.2%	-	-	N/A	N/A
New Zealand	-	-	-	-	-	-	-	-	1	1.9%	N/A	N/A
Poland	-	-	1	3.2%	-	-	-	-	1	1.9%	N/A	N/A
Scotland	-	-	-	-	-	-	1	2.2%	-	-	N/A	N/A
Semester at Sea	-	-	-	-	1	2.3%	1	2.2%	1	1.9%	N/A	0.0%
Spain	-	-	1	3.2%	3	7.0%	4	8.7%	5	9.3%	N/A	25.0%
Total	29		31		43		46		54		86.2%	17.4%

