

SECTION V:

FACULTY AND INSTRUCTION

2009 INSTITUTIONAL PROFILE

FACULTY BY RANK [1]

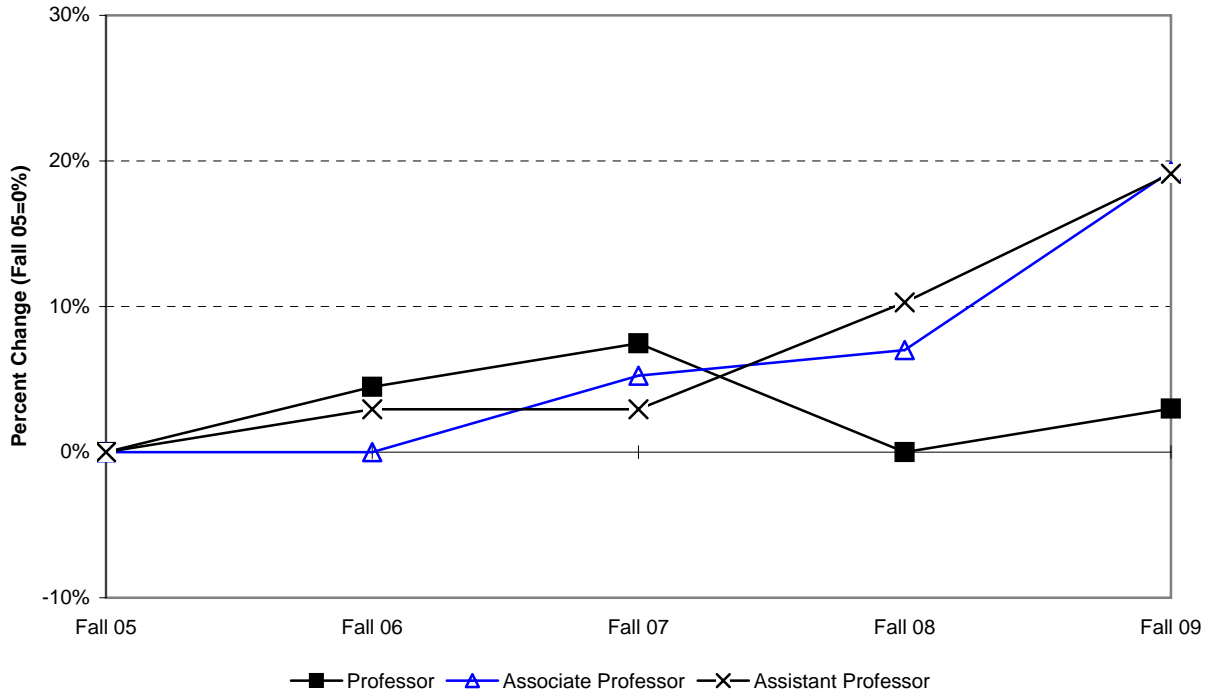
	Fall 2005		Fall 2006		Fall 2007		Fall 2008		Fall 2009		Percent Change 05 to 09	Percent Change 08 to 09
	No.	Pct.	No.	Pct.	No.	Pct.	No.	Pct.	No.	Pct.		
Professor	67	33.3%	70	34.0%	72	34.3%	67	31.8%	69	30.3%	3.0%	3.0%
Associate Professor	57	28.4%	57	27.7%	60	28.6%	61	28.9%	68	29.8%	19.3%	11.5%
Assistant Professor	68	33.8%	70	34.0%	70	33.3%	75	35.5%	81	35.5%	19.1%	8.0%
Librarian	9	4.5%	9	4.4%	8	3.8%	8	3.8%	10	4.4%	11.1%	25.0%
Total	201		206		210		211		228		13.4%	8.1%

[1] Includes both tenured and non-tenured faculty. Includes Deans, but does not include faculty serving in administrative positions.
Excludes full-time substitutes hired to replace faculty on paid leave or sabbatical.

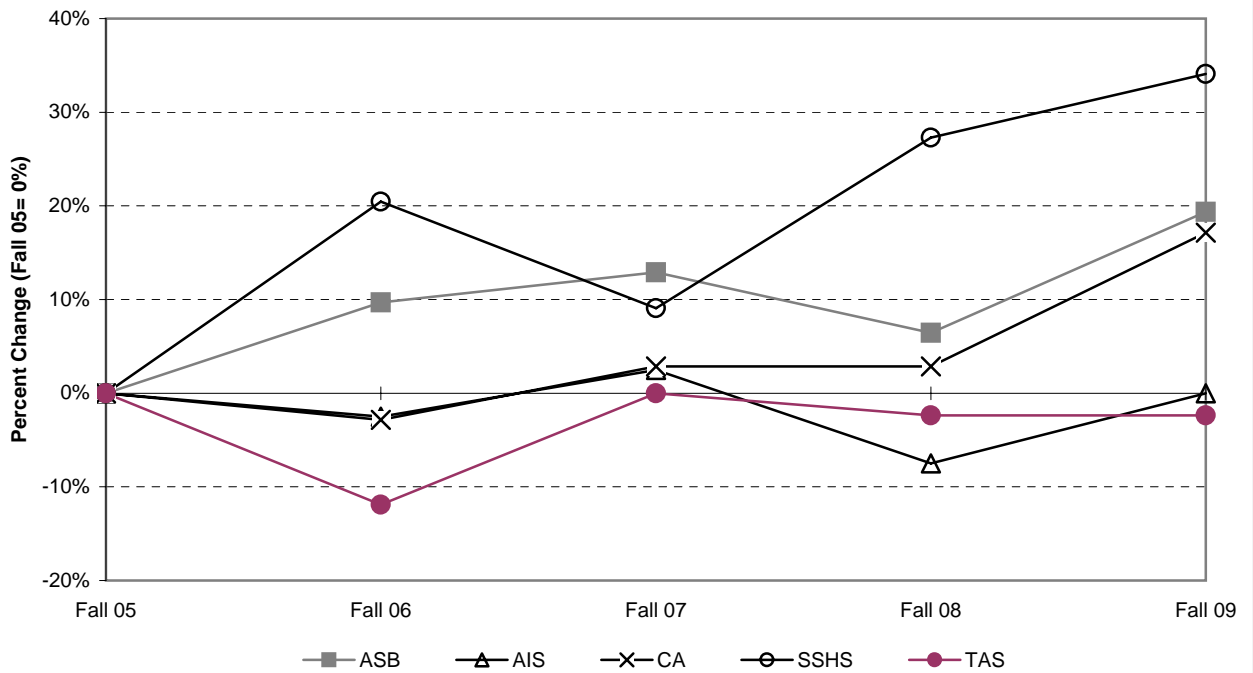
FACULTY BY SCHOOL OR DIVISION

	Fall 2005		Fall 2006		Fall 2007		Fall 2008		Fall 2009		Percent Change 05 to 09	Percent Change 08 to 09
	No.	Pct.	No.	Pct.	No.	Pct.	No.	Pct.	No.	Pct.		
Anisfield School of Business	31	15.4%	34	16.5%	35	16.7%	33	15.6%	37	16.2%	19.4%	12.1%
School of American/ International Studies	40	19.9%	39	18.9%	41	19.5%	37	17.5%	40	17.5%	0.0%	8.1%
School of Contemporary Arts	35	17.4%	34	16.5%	36	17.1%	36	17.1%	41	18.0%	17.1%	13.9%
School of Social Science/ Human Services	44	21.9%	53	25.7%	48	22.9%	56	26.5%	59	25.9%	34.1%	5.4%
School of Theoretical/ Applied Science	42	20.9%	37	18.0%	42	20.0%	41	19.4%	41	18.0%	-2.4%	0.0%
Library	9	4.5%	9	4.4%	8	3.8%	8	3.8%	10	4.4%	11.1%	25.0%
Total	201		206		210		211		228		13.4%	8.1%

CUMULATIVE PERCENT CHANGE IN FACULTY BY RANK
 (includes ranks with 10 or more faculty in each of 5 years)



CUMULATIVE PERCENT CHANGE IN FACULTY BY SCHOOL
 (includes schl/div with 10 or more faculty in each of 5 years)

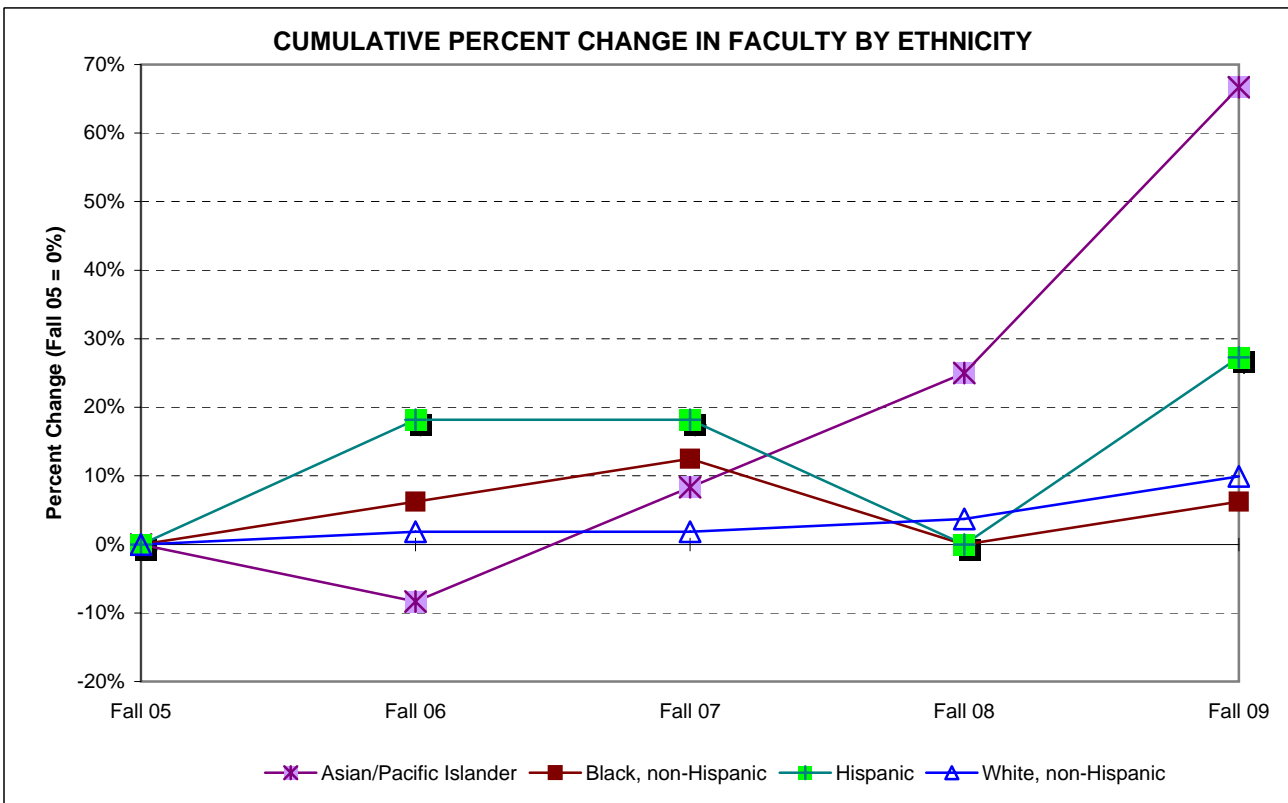
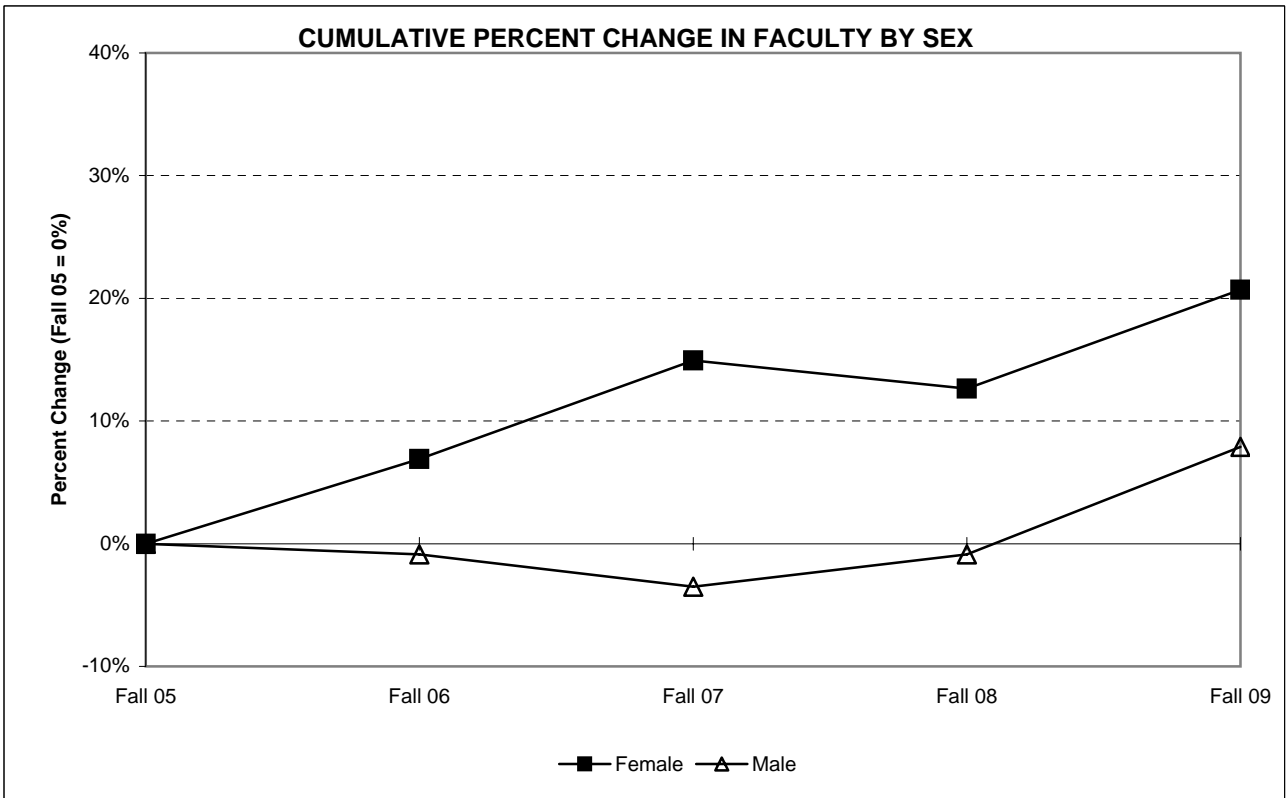


FACULTY BY SEX

	Fall 2005		Fall 2006		Fall 2007		Fall 2008		Fall 2009		Percent Change 05 to 09	Percent Change 08 to 09
	No.	Pct.	No.	Pct.	No.	Pct.	No.	Pct.	No.	Pct.		
Female	87	43.3%	93	45.1%	100	47.6%	98	46.4%	105	46.1%	20.7%	7.1%
Male	114	56.7%	113	54.9%	110	52.4%	113	53.6%	123	53.9%	7.9%	8.8%
Total	201		206		210		211		228		13.4%	8.1%

FACULTY BY ETHNICITY

	Fall 2005		Fall 2006		Fall 2007		Fall 2008		Fall 2009		Percent Change 05 to 09	Percent Change 08 to 09
	No.	Pct.	No.	Pct.	No.	Pct.	No.	Pct.	No.	Pct.		
Amer. Indian/Alaskan Nat.	0	0.0%	0	0.0%	0	0.0%	0	0.0%	0	0.0%	N/A	N/A
Asian/Pacific Islander	12	6.0%	11	5.3%	13	6.2%	15	7.1%	20	8.8%	66.7%	33.3%
Black, non-Hispanic	16	8.0%	17	8.3%	18	8.6%	16	7.6%	17	7.5%	6.3%	6.3%
Hispanic	11	5.5%	13	6.3%	13	6.2%	11	5.2%	14	6.1%	27.3%	27.3%
White, non-Hispanic	161	80.1%	164	79.6%	164	78.1%	167	79.1%	177	77.6%	9.9%	6.0%
Missing	1	0.5%	1	0.5%	2	1.0%	2	0.9%	0	0.0%	-100.0%	-100.0%
Total	201		206		210		211		228		13.4%	8.1%



FACULTY BY SCHOOL OR DIVISION AND RANK

	Fall 2005		Fall 2006		Fall 2007		Fall 2008		Fall 2009		Percent Change 05 to 09	Percent Change 08 to 09
	No.	Pct.	No.	Pct.	No.	Pct.	No.	Pct.	No.	Pct.		
ASB												
Professor	6	3.0%	8	3.9%	8	3.8%	10	4.7%	10	4.4%	66.7%	0.0%
Associate Professor	15	7.5%	14	6.8%	14	6.7%	10	4.7%	13	5.7%	-13.3%	30.0%
Assistant Professor	10	5.0%	12	5.8%	13	6.2%	13	6.2%	14	6.1%	40.0%	7.7%
<i>Sub-Total ASB</i>	<i>31</i>	<i>15.4%</i>	<i>34</i>	<i>16.5%</i>	<i>35</i>	<i>16.7%</i>	<i>33</i>	<i>15.6%</i>	<i>37</i>	<i>16.2%</i>	<i>19.4%</i>	<i>12.1%</i>
AIS												
Professor	16	8.0%	14	6.8%	16	7.6%	11	5.2%	13	5.7%	-18.8%	18.2%
Associate Professor	14	7.0%	13	6.3%	13	6.2%	16	7.6%	17	7.5%	21.4%	6.3%
Assistant Professor	10	5.0%	12	5.8%	12	5.7%	10	4.7%	10	4.4%	0.0%	0.0%
<i>Sub-Total AIS</i>	<i>40</i>	<i>19.9%</i>	<i>39</i>	<i>18.9%</i>	<i>41</i>	<i>19.5%</i>	<i>37</i>	<i>17.5%</i>	<i>40</i>	<i>17.5%</i>	<i>0.0%</i>	<i>8.1%</i>
CA												
Professor	9	4.5%	11	5.3%	11	5.2%	10	4.7%	11	4.8%	22.2%	10.0%
Associate Professor	9	4.5%	10	4.9%	12	5.7%	13	6.2%	14	6.1%	55.6%	7.7%
Assistant Professor	17	8.5%	13	6.3%	13	6.2%	13	6.2%	16	7.0%	-5.9%	23.1%
<i>Sub-Total CA</i>	<i>35</i>	<i>17.4%</i>	<i>34</i>	<i>16.5%</i>	<i>36</i>	<i>17.1%</i>	<i>36</i>	<i>17.1%</i>	<i>41</i>	<i>18.0%</i>	<i>17.1%</i>	<i>13.9%</i>
SSHS												
Professor	20	10.0%	24	11.7%	23	11.0%	22	10.4%	22	9.6%	10.0%	0.0%
Associate Professor	9	4.5%	11	5.3%	11	5.2%	12	5.7%	15	6.6%	66.7%	25.0%
Assistant Professor	15	7.5%	18	8.7%	14	6.7%	22	10.4%	22	9.6%	46.7%	0.0%
<i>Sub-Total SSHS</i>	<i>44</i>	<i>21.9%</i>	<i>53</i>	<i>25.7%</i>	<i>48</i>	<i>22.9%</i>	<i>56</i>	<i>26.5%</i>	<i>59</i>	<i>25.9%</i>	<i>34.1%</i>	<i>5.4%</i>
TAS												
Professor	16	8.0%	13	6.3%	14	6.7%	14	6.6%	13	5.7%	-18.8%	-7.1%
Associate Professor	10	5.0%	9	4.4%	10	4.8%	10	4.7%	9	3.9%	-10.0%	-10.0%
Assistant Professor	16	8.0%	15	7.3%	18	8.6%	17	8.1%	19	8.3%	18.8%	11.8%
<i>Sub-Total TAS</i>	<i>42</i>	<i>20.9%</i>	<i>37</i>	<i>18.0%</i>	<i>42</i>	<i>20.0%</i>	<i>41</i>	<i>19.4%</i>	<i>41</i>	<i>18.0%</i>	<i>-2.4%</i>	<i>0.0%</i>
Library	9	4.5%	9	4.4%	8	3.8%	8	3.8%	10	4.4%	11.1%	25.0%
Total	201		206		210		211		228		13.4%	8.1%

FACULTY BY SCHOOL OR DIVISION AND SEX

		Fall 2005		Fall 2006		Fall 2007		Fall 2008		Fall 2009		Pct. Chg.	Pct. Chg.
		No.	Pct.	No.	Pct.	No.	Pct.	No.	Pct.	No.	Pct.	05 to 09	08 to 09
ASB	Female	8	4.0%	10	4.9%	12	5.7%	12	5.7%	12	5.3%	50.0%	0.0%
	Male	23	11.4%	24	11.7%	23	11.0%	21	10.0%	25	11.0%	8.7%	19.0%
AIS	Female	19	9.5%	19	9.2%	20	9.5%	16	7.6%	22	9.6%	15.8%	37.5%
	Male	21	10.4%	20	9.7%	21	10.0%	21	10.0%	18	7.9%	-14.3%	-14.3%
CA	Female	19	9.5%	19	9.2%	21	10.0%	19	9.0%	13	5.7%	-31.6%	-31.6%
	Male	16	8.0%	15	7.3%	15	7.1%	17	8.1%	28	12.3%	75.0%	64.7%
SSHS	Female	22	10.9%	27	13.1%	24	11.4%	28	13.3%	28	12.3%	27.3%	0.0%
	Male	22	10.9%	26	12.6%	24	11.4%	28	13.3%	31	13.6%	40.9%	10.7%
TAS	Female	11	5.5%	10	4.9%	16	7.6%	16	7.6%	21	9.2%	90.9%	31.3%
	Male	31	15.4%	27	13.1%	26	12.4%	25	11.8%	20	8.8%	-35.5%	-20.0%
Library	Female	8	4.0%	8	3.9%	7	3.3%	7	3.3%	9	3.9%	12.5%	28.6%
	Male	1	0.5%	1	0.5%	1	0.5%	1	0.5%	1	0.4%	0.0%	0.0%
Total		201		206		210		211		228		13.4%	8.1%

FACULTY BY SCHOOL OR DIVISION AND ETHNICITY

		Fall 2005		Fall 2006		Fall 2007		Fall 2008		Fall 2009		Pct. Chg.	Pct. Chg.
		No.	Pct.	No.	Pct.	No.	Pct.	No.	Pct.	No.	Pct.	05 to 09	08 to 09
ASB	Asian	3	1.5%	3	1.5%	4	1.9%	5	2.4%	3	1.3%	0.0%	-40.0%
	Black	4	2.0%	5	2.4%	5	2.4%	5	2.4%	4	1.8%	0.0%	-20.0%
	Hispanic	0	0.0%	1	0.5%	1	0.5%	0	0.0%	2	0.9%	N/A	N/A
	White	24	11.9%	25	12.1%	24	11.4%	23	10.9%	28	12.3%	16.7%	21.7%
AIS	Asian	2	1.0%	2	1.0%	3	1.4%	3	1.4%	3	1.3%	50.0%	0.0%
	Black	1	0.5%	1	0.5%	1	0.5%	1	0.5%	4	1.8%	300.0%	300.0%
	Hispanic	3	1.5%	4	1.9%	4	1.9%	3	1.4%	2	0.9%	-33.3%	-33.3%
	White	33	16.4%	31	15.0%	32	15.2%	29	13.7%	31	13.6%	-6.1%	6.9%
CA	Asian	3	1.5%	2	1.0%	2	1.0%	2	0.9%	1	0.4%	-66.7%	-50.0%
	Black	4	2.0%	4	1.9%	4	1.9%	4	1.9%	1	0.4%	-75.0%	-75.0%
	Hispanic	3	1.5%	3	1.5%	3	1.4%	3	1.4%	2	0.9%	-33.3%	-33.3%
	White	25	12.4%	25	12.1%	27	12.9%	27	12.8%	37	16.2%	48.0%	37.0%
SSHS	Asian	1	0.5%	1	0.5%	1	0.5%	1	0.5%	9	3.9%	800.0%	800.0%
	Black	5	2.5%	5	2.4%	4	1.9%	3	1.4%	5	2.2%	0.0%	66.7%
	Hispanic	4	2.0%	4	1.9%	3	1.4%	3	1.4%	4	1.8%	0.0%	33.3%
	White	34	16.9%	43	20.9%	40	19.0%	48	22.7%	41	18.0%	20.6%	-14.6%
TAS	Asian	3	1.5%	3	1.5%	3	1.4%	4	1.9%	3	1.3%	0.0%	-25.0%
	Black	1	0.5%	1	0.5%	3	1.4%	2	0.9%	2	0.9%	100.0%	0.0%
	Hispanic	1	0.5%	1	0.5%	2	1.0%	2	0.9%	4	1.8%	300.0%	100.0%
	White	37	18.4%	32	15.5%	34	16.2%	33	15.6%	32	14.0%	-13.5%	-3.0%
Library	Asian	0	0.0%	0	0.0%	0	0.0%	0	0.0%	1	0.4%	N/A	N/A
	Black	1	0.5%	1	0.5%	1	0.5%	1	0.5%	1	0.4%	0.0%	0.0%
	Hispanic	0	0.0%	0	0.0%	0	0.0%	0	0.0%	0	0.0%	N/A	N/A
	White	8	4.0%	8	3.9%	7	3.3%	7	3.3%	8	3.5%	0.0%	14.3%
	Missing	1	0.5%	1	0.5%	2	1.0%	2	0.9%	0	0.0%	-100.0%	-100.0%
Total		201		206		210		211		228		13.4%	8.1%

FACULTY BY RANK AND SEX

		Fall 2005		Fall 2006		Fall 2007		Fall 2008		Fall 2009		Pct. Chg. 05 to 09	Pct. Chg. 08 to 09
		No.	Pct.	No.	Pct.	No.	Pct.	No.	Pct.	No.	Pct.		
Prof.	Female	21	10.4%	22	10.7%	25	11.9%	24	11.4%	29	12.7%	38.1%	20.8%
	Male	46	22.9%	48	23.3%	47	22.4%	43	20.4%	40	17.5%	-13.0%	-7.0%
Assoc. Prof.	Female	21	10.4%	24	11.7%	31	14.8%	34	16.1%	33	14.5%	57.1%	-2.9%
	Male	36	17.9%	33	16.0%	29	13.8%	27	12.8%	35	15.4%	-2.8%	29.6%
Asst. Prof.	Female	37	18.4%	39	18.9%	37	17.6%	33	15.6%	34	14.9%	-8.1%	3.0%
	Male	31	15.4%	31	15.0%	33	15.7%	42	19.9%	47	20.6%	51.6%	11.9%
Libr.	Female	8	4.0%	8	3.9%	7	3.3%	7	3.3%	9	3.9%	12.5%	28.6%
	Male	1	0.5%	1	0.5%	1	0.5%	1	0.5%	1	0.4%	0.0%	0.0%
Total		201		206		210		211		228		13.4%	8.1%

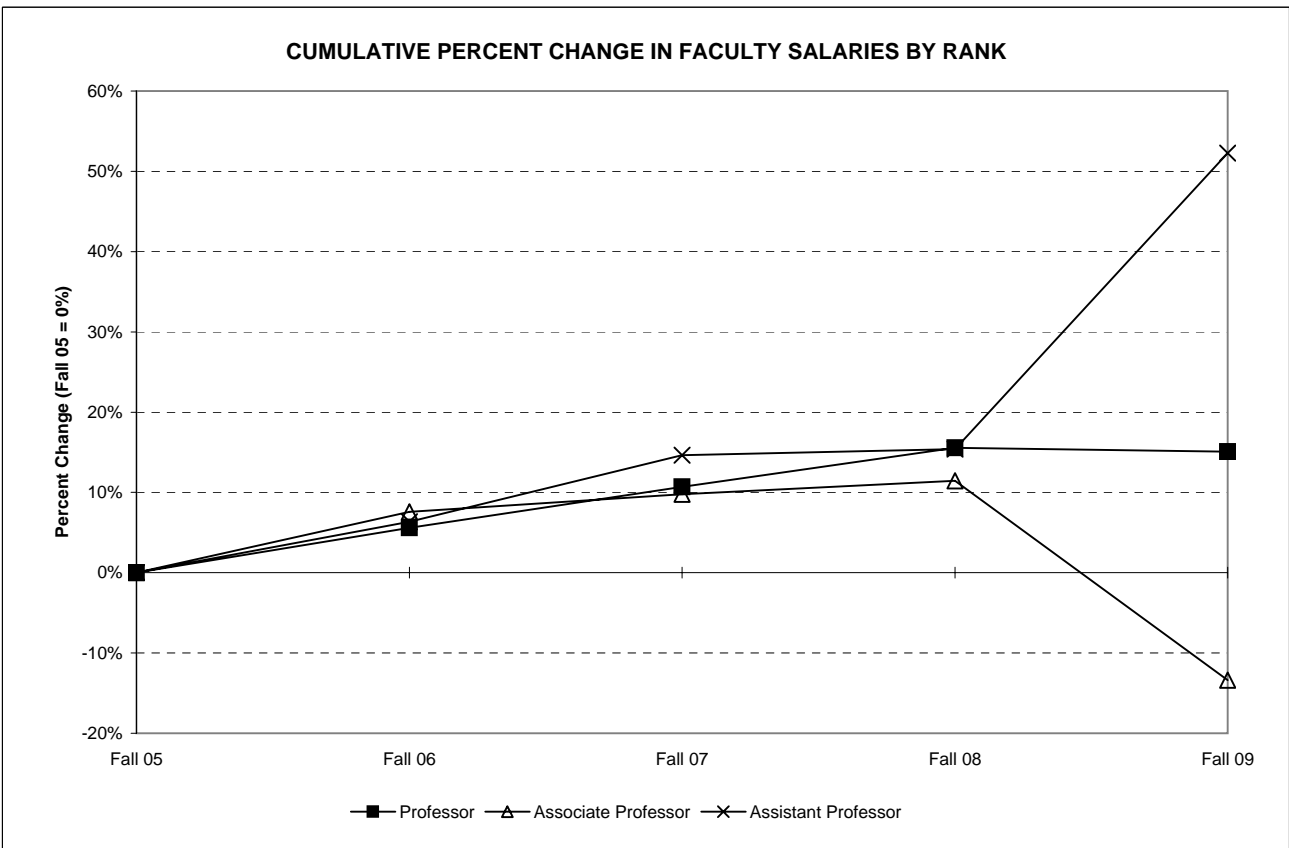
FACULTY BY RANK AND ETHNICITY

		Fall 2005		Fall 2006		Fall 2007		Fall 2008		Fall 2009		Pct. Chg. 05 to 09	Pct. Chg. 08 to 09
		No.	Pct.	No.	Pct.	No.	Pct.	No.	Pct.	No.	Pct.		
Prof.	Asian	4	2.0%	5	2.4%	5	2.4%	4	1.9%	3	1.3%	-25.0%	-25.0%
	Black	3	1.5%	3	1.5%	3	1.4%	1	0.5%	6	2.6%	100.0%	500.0%
	Hispanic	3	1.5%	3	1.5%	2	1.0%	1	0.5%	6	2.6%	0.0%	500.0%
	White	57	28.4%	59	28.6%	62	29.5%	61	28.9%	54	23.7%	-5.3%	-11.5%
Assoc. Prof.	Asian	4	2.0%	2	1.0%	4	1.9%	3	1.4%	6	2.6%	50.0%	100.0%
	Black	7	3.5%	8	3.9%	8	3.8%	9	4.3%	6	2.6%	-14.3%	-33.3%
	Hispanic	3	1.5%	4	1.9%	6	2.9%	7	3.3%	4	1.8%	33.3%	-42.9%
	White	43	21.4%	43	20.9%	40	19.0%	41	19.4%	52	22.8%	20.9%	26.8%
Asst. Prof.	Asian	4	2.0%	4	1.9%	4	1.9%	8	3.8%	10	4.4%	150.0%	25.0%
	Black	5	2.5%	5	2.4%	6	2.9%	5	2.4%	4	1.8%	-20.0%	-20.0%
	Hispanic	5	2.5%	6	2.9%	5	2.4%	3	1.4%	4	1.8%	-20.0%	33.3%
	White	53	26.4%	54	26.2%	55	26.2%	58	27.5%	63	27.6%	18.9%	8.6%
Libr.	Asian	0	0.0%	0	0.0%	0	0.0%	0	0.0%	1	0.4%	N/A	N/A
	Black	1	0.5%	1	0.5%	1	0.5%	1	0.5%	1	0.4%	0.0%	0.0%
	Hispanic	0	0.0%	0	0.0%	0	0.0%	0	0.0%	0	0.0%	N/A	N/A
	White	8	4.0%	8	3.9%	7	3.3%	7	3.3%	8	3.5%	0.0%	14.3%
Missing		1	0.5%	1	0.5%	2	1.0%	2	0.9%	0	0.0%	-100.0%	-100.0%
Total		201		206		210		211		228		13.4%	8.1%

AVERAGE ANNUAL FACULTY SALARIES BY RANK [1]

Rank	2005	2006	2007	2008	2009	Percent Change 05 to 09	Percent Change 08 to 09
Professor	\$94,985	\$100,296	\$105,131	\$109,771	\$109,307	15.1%	-0.4%
Associate Professor	\$76,207	\$81,978	\$83,644	\$84,937	\$66,016	-13.4%	-22.3%
Assistant Professor	\$55,825	\$59,366	\$64,001	\$64,420	\$85,014	52.3%	32.0%
Overall Average	\$75,322	\$80,126	\$83,972	\$85,192	\$85,089	13.0%	-0.1%
Average Fringe Benefit	\$24,668	\$27,844	\$27,837	\$30,754	\$29,653	20.2%	-3.6%

[1] Source: Annual American Association of University Professors (AAUP) Faculty Compensation Survey

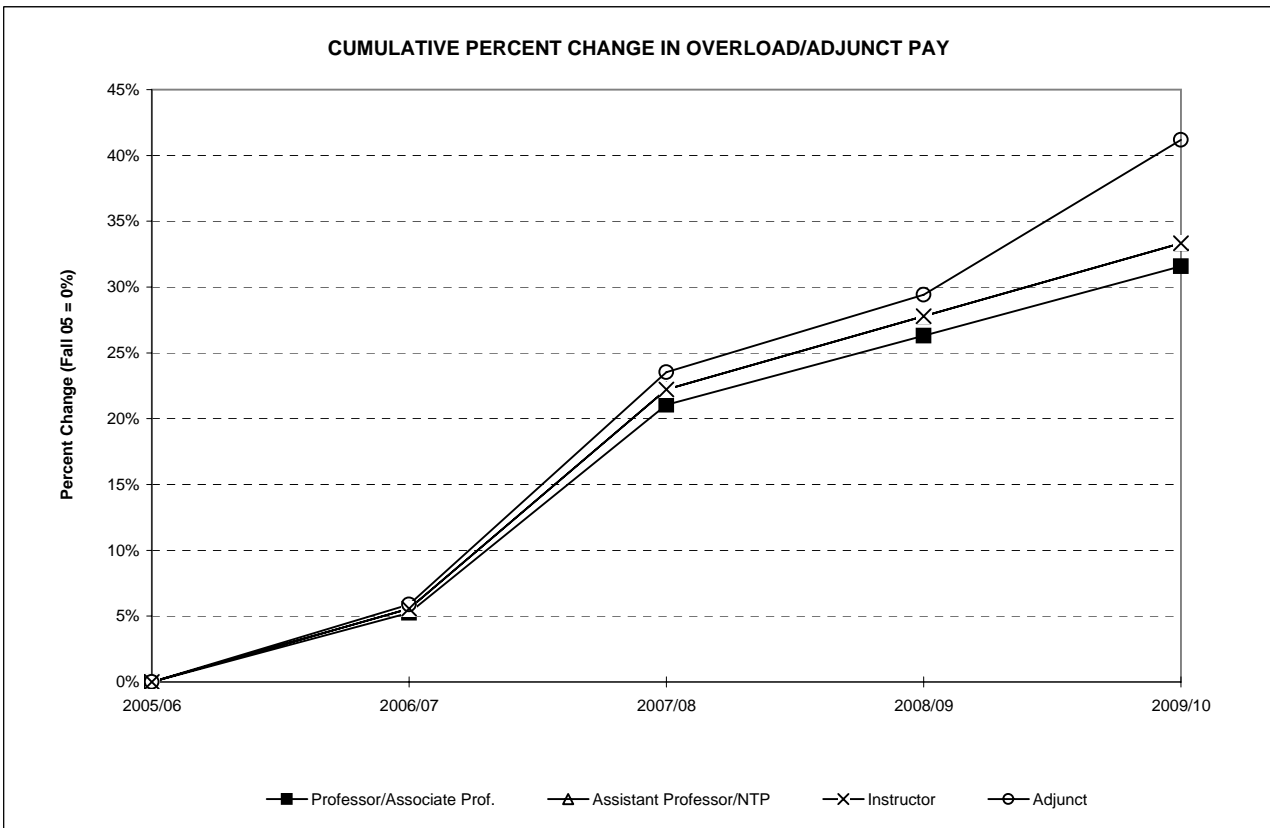


ADJUNCT AND OVERLOAD RATE OF PAY PER CREDIT

	Acad. Year 2005-06	Acad. Year 2006-07	Acad. Year 2007-08	Acad. Year 2008-09	Acad. Year 2009-10	Percent Change 05/06 to 09/10	Percent Change 08/09 to 09/10
Professor/Associate Prof.	\$950	\$1,000	\$1,150	\$1,200	\$1,250	31.6%	4.2%
Assistant Professor/NTP ^[1]	\$900	\$950	\$1,100	\$1,150	\$1,200	33.3%	4.3%
Instructor	\$900	\$950	\$1,100	\$1,150	\$1,200	33.3%	4.3%
Adjunct ^[2]	\$850	\$900	\$1,050	\$1,100	\$1,200	41.2%	9.1%

[1] NTP = Non-Teaching Professional.

[2] Adjunct rate higher by \$50 if adjunct taught 16 or more semesters.



GRANTS 2009 / 2010

Name of Grant	Agency	Total Grant (\$)	Amount to use in FY10	Project Director
Meadowlands (grant year: 1/1/09-12/31/09)	NJ Meadowlands Commission	--	1,847,895	A. Cristini
Trio Student Support Services (grant year: 9/1/09- 8/31/10)	US DOE	1,058,492	288,771	N. Carr
Upward Bound (grant year: 11/1/09 to 10/31/10)	US DOE	1,053,656	263,414	C. Frishberg
EOF	NJ DOE	903,063	903,063	L. Weems
Marsh Access (grant year: 4/1/09-3/31/10)	NSF	1,123,396	323,294	J. Balutanski
NOYCE Scholars	NSF	409,720	305,809	L. D'Antonio
The Governor's School	NJ CHE	50,000	50,000	S. Rachouh
SDS Scholarships	US HHS	21,561	21,561	K. Burke
AENT Nursing	US HHS	23,268	23,268	K. Burke
Phase II Expansion Project (08/15/09 - 08/14/10)	NSF	400,929	118,824	A. Kumar
NJ Council for the Arts	Arts Council	18,573	18,573	Jane Stein
NIMH Research Grant R7	US HHS	59,500	7,000	C. Reich
NIMH Research Grant (R15)	US HHS (NIH)	187,500	62,500	C. Reich
Nursing & Science Lab	HHS	188,100	188,100	K. Burke
HCC Small modeling & Expliting	NSF	98,780	49,390	Scott Frees
Rutgers Subcontract	NSF	59,373	59,373	O. Dogru
Fulbright	US Dept. of State	--	24,000	M. Edelstein

EPA = United States Enviromental Protection Agency
NSF = National Science Foundation
US DOE = United States Department of Education
NJ BPU = New Jersey Board of Public Utilities
NJ CHE = New Jersey Commission on Higher Education
NJ DOE = New Jersey Department of Education
US SD = United States State Department
US HHS = United States Department of Health and Human Services
US HHS = United States Department of Health and Human Services

LIBRARY COLLECTION

Library Collections	Fiscal Year 2010
Books, Serial Backfiles, and Other Materials	177,584
Current Subscriptions in Paper and Microform	487
Electronic Subscriptions	19,025
Microforms	10
Audiovisual Materials	9,697

Source: Exlibris Voyager db query on 12/2/09 by M.Sexton