

SECTION III:

ENROLLMENT

2009 INSTITUTIONAL PROFILE

TOTAL FALL 2009 ENROLLMENT = 6,026

By Age

Less than 20	1,689	28.0%
20 to 24	3,471	57.6%
25 to 29	349	5.8%
30 to 39	230	3.8%
Greater than 39	287	4.8%
Missing	0	N/A

By Sex

Female	3,546	58.8%
Male	2,480	41.2%

By Ethnicity

American Indian/Native Alaskan	21	0.3%
Asian/Pacific Islander	304	5.0%
Black, non-Hispanic	336	5.6%
Hispanic	526	8.7%
White, non-Hispanic	4,688	77.8%
missing	151	2.5%

By Citizenship

U.S. Citizen/Permanent Resident	5,899	97.9%
non-Citizen/non-Resident	127	2.1%

By Ethnicity and Citizenship

American Indian/Native Alaskan	21	0.3%
Asian/Pacific Islander	283	4.7%
Black, non-Hispanic	318	5.3%
Hispanic	517	8.6%
White, non-Hispanic	4,613	76.6%
Nonresident Alien	123	2.0%
Missing ^[1]	151	2.5%

By State of Origin

New Jersey	5,617	93.3%
New York	239	4.0%
Other U.S. State/Territory	39	0.6%
Foreign Country	127	2.1%
Missing	4	0.1%

[1] Four Nonresident Aliens were missing ethnicity and 147 citizens were missing ethnicity, for a total of 151 missing ethnicity.

TOTAL FALL 2009 ENROLLMENT = 6,026

	First-time Undergraduate		Transfer Undergraduate		Readmitted Undergraduate		Continuing Undergraduate		First-time/Transfer Graduate		Continuing/Readmit Graduate		All Nondegree (Undergrad/Grad)	
	Number	Percent	Number	Percent	Number	Percent	Number	Percent	Number	Percent	Number	Percent	Number	Percent
By Age														
< 20	922	98.4%	105	17.3%	0	0.0%	629	16.0%	0	0.0%	0	0.0%	33	11.6%
20 to 24	11	1.2%	415	68.3%	5	10.6%	2,899	73.6%	5	19.2%	16	8.6%	120	42.3%
25 to 29	2	0.2%	35	5.8%	14	29.8%	194	4.9%	9	34.6%	53	28.3%	42	14.8%
30 to 39	0	0.0%	29	4.8%	17	36.2%	116	2.9%	1	3.8%	44	23.5%	23	8.1%
> 39	2	0.2%	24	3.9%	11	23.4%	99	2.5%	11	42.3%	74	39.6%	66	23.2%
	937		608		47		3,937		26		187		284	
By Sex														
Female	578	61.7%	339	55.8%	30	63.8%	2,255	57.3%	20	76.9%	139	74.3%	185	65.1%
Male	359	38.3%	269	44.2%	17	36.2%	1,682	42.7%	6	23.1%	48	25.7%	99	34.9%
	937		608		47		3,937		26		187		284	
By Ethnicity														
Am. Ind./Nat. Al.	5	0.5%	1	0.2%	0	0.0%	14	0.4%	0	0.0%	0	0.0%	1	0.4%
Asian/Pac. Is.	53	5.7%	26	4.3%	2	4.3%	205	5.2%	1	3.8%	4	2.1%	13	4.6%
Black, non-Hisp.	45	4.8%	20	3.3%	5	10.6%	248	6.3%	2	7.7%	11	5.9%	5	1.8%
Hispanic	89	9.5%	65	10.7%	7	14.9%	347	8.8%	0	0.0%	8	4.3%	10	3.5%
White, non-Hisp.	701	74.8%	443	72.9%	33	70.2%	3,097	78.7%	22	84.6%	164	87.7%	228	80.3%
missing	44	4.7%	53	8.7%	0	0.0%	26	0.7%	1	3.8%	0	0.0%	27	9.5%
	937		608		47		3,937		26		187		284	
By Citizenship														
U.S. Citizen/Resident	931	99.4%	605	99.5%	46	97.9%	3,856	97.9%	26	100.0%	185	98.9%	250	88.0%
non-Citizen/non-Res.	6	0.6%	3	0.5%	1	2.1%	81	2.1%	0	0.0%	2	1.1%	34	12.0%
	937		608		47		3,937		26		187		284	
By Ethnicity & Citizenship														
Am. Ind./Nat. Al.	5	0.5%	1	0.2%	0	0.0%	14	0.4%	0	0.0%	0	0.0%	1	0.4%
Asian/Pac. Is.	53	5.7%	26	4.3%	2	4.3%	185	4.7%	1	3.8%	4	2.1%	12	4.2%
Black, non-Hisp.	41	4.4%	19	3.1%	4	8.5%	237	6.0%	2	7.7%	11	5.9%	4	1.4%
Hispanic	89	9.5%	65	10.7%	7	14.9%	341	8.7%	0	0.0%	8	4.3%	7	2.5%
White, non-Hisp.	699	74.6%	441	72.5%	33	70.2%	3,053	77.5%	22	84.6%	162	86.6%	203	71.5%
Nonresident Alien	6	0.6%	3	0.5%	1	2.1%	81	2.1%	0	0.0%	2	1.1%	34	12.0%
missing	44	4.7%	53	8.7%	0	0.0%	26	0.7%	1	3.8%	0	0.0%	23	8.1%
	937		608		47		3,937		26		187		284	
By State of Origin														
New Jersey	901	96.2%	565	93.1%	42	89.4%	3,665	93.2%	23	88.5%	178	95.2%	243	85.6%
New York	25	2.7%	36	5.9%	3	6.4%	159	4.0%	3	11.5%	6	3.2%	7	2.5%
Other U.S. State/Ter.	5	0.5%	3	0.5%	1	2.1%	29	0.7%	0	0.0%	1	0.5%	0	0.0%
Foreign Country	6	0.6%	3	0.5%	1	2.1%	81	2.1%	0	0.0%	2	1.1%	34	12.0%
missing	0	N/A	1	N/A	0	N/A	3	N/A	0	N/A	0	N/A	0	N/A
	937		608		47		3,937		26		187		284	

TOTAL FALL 2009 ENROLLMENT = 6,026

By Veteran Status

Veteran/Dependent of Deceased Veteran	53	0.9%
Non-Veteran	5,973	99.1%

By Disability Status

Disabled	265	4.4%
Not Disabled	5,761	95.6%

By Matriculation Status

Degree-seeking	5,742	95.3%
Nondegree-seeking	284	4.7%

By Attendance Status

Full-time	5,230	86.8%
Part-time	796	13.2%

By Undergraduate/Graduate Status

Total Undergraduate	5,776	95.9%
Total Graduate	250	4.1%

By Undergraduate Class (N=5,776)

Freshmen	1,450	26.2%
Sophomores	1,210	21.9%
Juniors	1,495	27.0%
Seniors	1,374	24.9%
Unclassified UG/Nondegree-Seeking	247	N/A

By Undergraduate Special Programs (N=5,776)

EOF	343	5.9%
EOF Honor's Program	1	0.0%
Honor's Program	171	3.0%
No Special Program Designation	5,261	91.1%

By Status When First Admitted (UG only N=5,776)

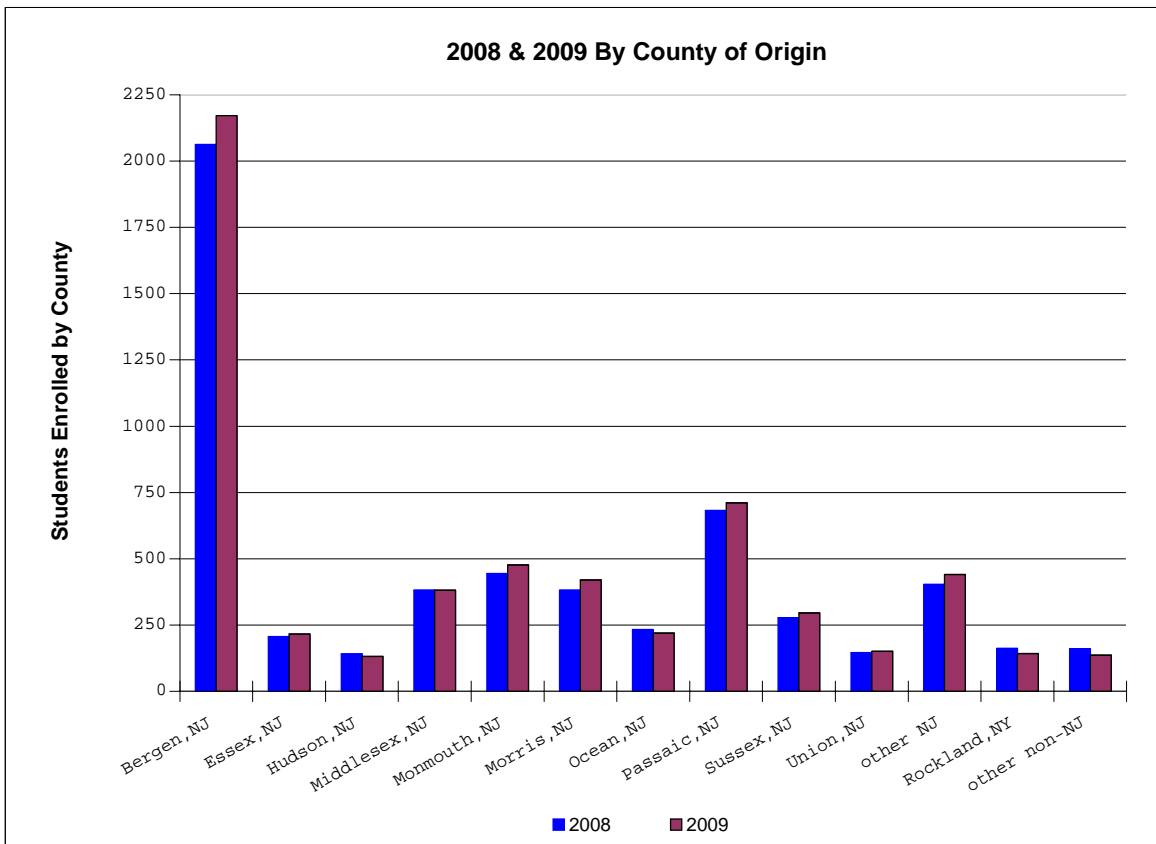
EOF Admit	302	5.8%
EOF Transfer Admit	44	0.8%
Regular Admit	2,665	51.4%
Special Admit	394	7.6%
Transfer Admit	2,124	41.0%
Unclassified UG/Non-Matriculated	247	N/A

TOTAL FALL 2009 ENROLLMENT = 6,026

	First-time Undergraduate		Transfer Undergraduate		Readmitted Undergraduate		Continuing Undergraduate		First-time/Transfer Graduate		Continuing/Readmit Graduate		All Nondegree (Undergrad/Grad)	
	Number	Percent	Number	Percent	Number	Percent	Number	Percent	Number	Percent	Number	Percent	Number	Percent
By Veteran Status														
Veteran/Dependent	1	0.1%	14	2.3%	1	2.1%	36	0.9%	0	0.0%	0	0.0%	1	0.4%
Non-Veteran	936	99.9%	594	97.7%	46	97.9%	3,901	99.1%	26	100.0%	187	100.0%	283	99.6%
	937		608		47		3,937		26		187		284	
By Disability Status														
Disabled	25	2.7%	15	2.5%	1	2.1%	214	5.4%	1	3.8%	5	2.7%	4	1.4%
Not Disabled	912	97.3%	593	97.5%	46	97.9%	3,723	94.6%	25	96.2%	182	97.3%	280	98.6%
	937		608		47		3,937		26		187		284	
By Attend. Status														
Full-time	934	99.7%	557	91.6%	18	38.3%	3,639	92.4%	2	7.7%	3	1.6%	77	27.1%
Part-time	3	0.3%	51	8.4%	29	61.7%	298	7.6%	24	92.3%	184	98.4%	207	72.9%
	937		608		47		3,937		26		187		284	
By Undergrad vs. Grad														
Undergraduate	937	100.0%	608	100.0%	47	100.0%	3,937	100.0%	0	0.0%	0	0.0%	247	87.0%
Graduate	0	0.0%	0	0.0%	0	0.0%	0	0.0%	26	100.0%	187	100.0%	37	13.0%
	937		608		47		3,937		26		187		284	
By UG Class (N=5,776)														
Freshmen	932	99.5%	139	22.9%	2	4.3%	377	9.6%	0	0.0%	0	0.0%	0	0.0%
Sophomores	5	0.5%	257	42.3%	3	6.4%	945	24.0%	0	0.0%	0	0.0%	0	0.0%
Juniors	0	0.0%	209	34.4%	19	40.4%	1,267	32.2%	0	0.0%	0	0.0%	0	0.0%
Seniors	0	0.0%	3	0.5%	23	48.9%	1,348	34.2%	0	0.0%	0	0.0%	0	0.0%
Unclassified UG	0	N/A	0	N/A	0	N/A	0	N/A	0	N/A	0	N/A	247	N/A
	937		608		47		3,937		0		0		247	
By UG Spec. Pr. (N=5,776)														
EOF	84	9.2%	11	1.8%	2	4.3%	246	6.5%	0	0.0%	0	0.0%	0	0.0%
EOF Honor's Program	0	0.0%	0	0.0%	0	0.0%	1	0.0%	0	0.0%	0	0.0%	0	0.0%
Honor's Program	21	2.3%	4	0.7%	0	0.0%	145	3.8%	0	0.0%	0	0.0%	0	0.0%
No Spec. Pr. Desig.	832	90.8%	593	98.2%	45	95.7%	3,545	93.5%	0	0.0%	0	0.0%	247	100.0%
	937		608		47		3,937		0		0		247	
By UG Admit Status (N=5,776)														
EOF	84	9.0%	0	0.0%	3	6.4%	215	5.5%	0	0.0%	0	0.0%	0	0.0%
EOF Transfer	0	0.0%	11	1.8%	1	2.1%	32	0.8%	0	0.0%	0	0.0%	0	0.0%
Regular	748	79.8%	0	0.0%	14	29.8%	1,903	48.3%	0	0.0%	0	0.0%	0	0.0%
Special	105	11.2%	0	0.0%	1	2.1%	288	7.3%	0	0.0%	0	0.0%	0	0.0%
Transfer	0	0.0%	597	98.2%	28	59.6%	1,499	38.1%	0	0.0%	0	0.0%	0	0.0%
Unclassified UG	0	N/A	0	N/A	0	N/A	0	N/A	0	N/A	0	N/A	247	N/A
	937		608		47		3,937		0		0		247	

By County of Origin

Atlantic	14	0.2%	Salem	2	0.0%	
Bergen	2,172	36.0%	Somerset	93	1.5%	
Burlington	62	1.0%	Sussex	296	4.9%	
Camden	46	0.8%	Union	151	2.5%	
Cape May	11	0.2%	Warren	78	1.3%	
Cumberland	8	0.1%		Subtotal	5,617	93.2%
Essex	216	3.6%				
Gloucester	20	0.3%	Rockland	142	2.4%	
Hudson	132	2.2%	Orange	70	1.2%	
Hunterdon	58	1.0%	Westchester	0	0.0%	
Litchfield	1	0.0%	Other non-NJ	66	1.1%	
Mercer	47	0.8%	missing	4	0.1%	
Middlesex	382	6.3%	International	127	2.1%	
Monmouth	477	7.9%		Subtotal	409	6.8%
Morris	420	7.0%				
Ocean	220	3.7%				
Passaic	711	11.8%				
			TOTAL		6,026	



TOTAL FALL 2009 ENROLLMENT = 6,026

By Non-Citizen Country of Origin (N= 42 countries)

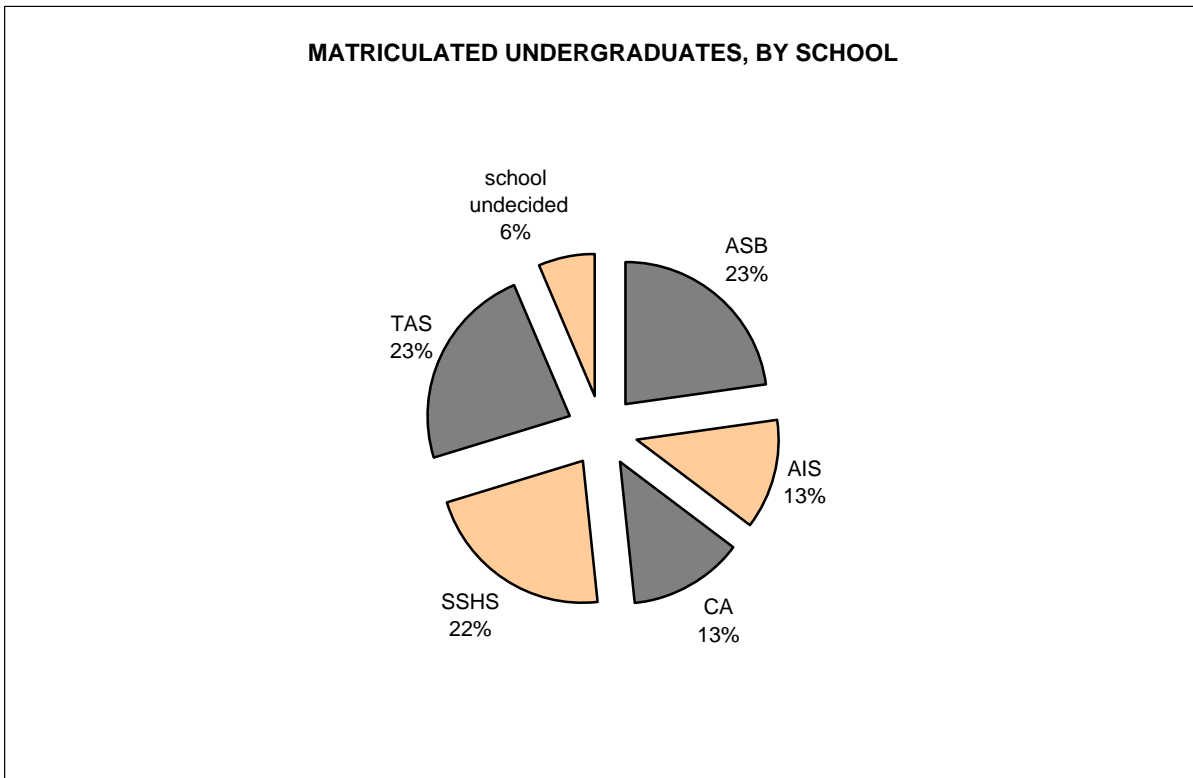
Bulgaria	29	22.8%
Germany	19	15.0%
Nigeria	10	7.9%
Brazil	7	5.5%
India	4	3.1%
South Korea	4	3.1%
Sweden	4	3.1%
Poland	3	2.4%
Russia	3	2.4%
Trinidad and Tobago	3	2.4%
Austria	2	1.6%
China	2	1.6%
Colombia	2	1.6%
Iraq	2	1.6%
Jamaica	2	1.6%
Kenya	2	1.6%
Mongolia	2	1.6%
Philippines	2	1.6%
South Africa	2	1.6%
Afghanistan	1	0.8%
Argentina	1	0.8%
Canada	1	0.8%
China (Taiwan)	1	0.8%
Croatia	1	0.8%
Czech Republic	1	0.8%
Ethiopia	1	0.8%
Haiti	1	0.8%
Hungary	1	0.8%
Israel	1	0.8%
Japan	1	0.8%
Macedonia	1	0.8%
Nepal	1	0.8%
Netherlands	1	0.8%
Oman	1	0.8%
Peru	1	0.8%
Romania	1	0.8%
Slovakia	1	0.8%
Slovenia	1	0.8%
Spain	1	0.8%
St. Vincent and Grenadin	1	0.8%
Turkey	1	0.8%
Ukraine	1	0.8%

127

TOTAL FALL 2009 ENROLLMENT = 6,026

By School, Matriculated Undergraduates (N= 5,529)

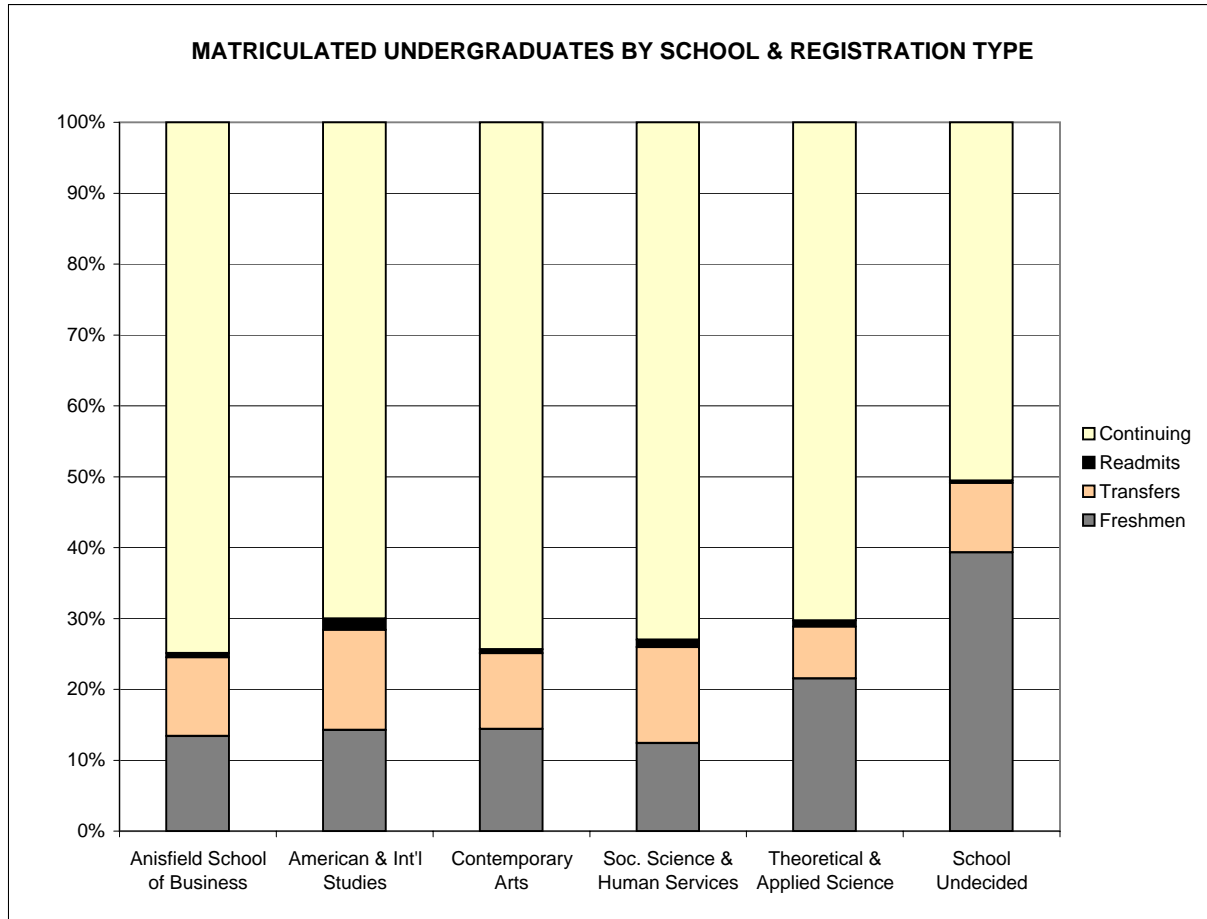
Anisfield School of Business	1,252	22.6%
American and International Studies	694	12.6%
Contemporary Arts	729	13.2%
Social Science and Human Services	1,218	22.0%
Theoretical and Applied Sciences	1,290	23.3%
Matriculated - School Undecided	346	6.3%



TOTAL FALL 2009 ENROLLMENT = 6,026

By UG School [1]	First-time Undergraduate		Transfer Undergraduate		Readmitted Undergraduate		Continuing Undergraduate	
	Number	Row Percent	Number	Row Percent	Number	Row Percent	Number	Row Percent
Anisfield School of Business	168	13.4%	139	11.1%	7	0.6%	938	74.9%
American & Int'l Studies	99	14.3%	98	14.1%	11	1.6%	486	70.0%
Contemporary Arts	105	14.4%	78	10.7%	4	0.5%	542	74.3%
Soc. Science & Human Services	151	12.4%	165	13.5%	13	1.1%	889	73.0%
Theoretical & Applied Science	278	21.6%	94	7.3%	11	0.9%	907	70.3%
School Undecided	136	39.3%	34	9.8%	1	0.3%	175	50.6%
	937	16.9%	608	11.0%	47	0.9%	3,937	71.2%

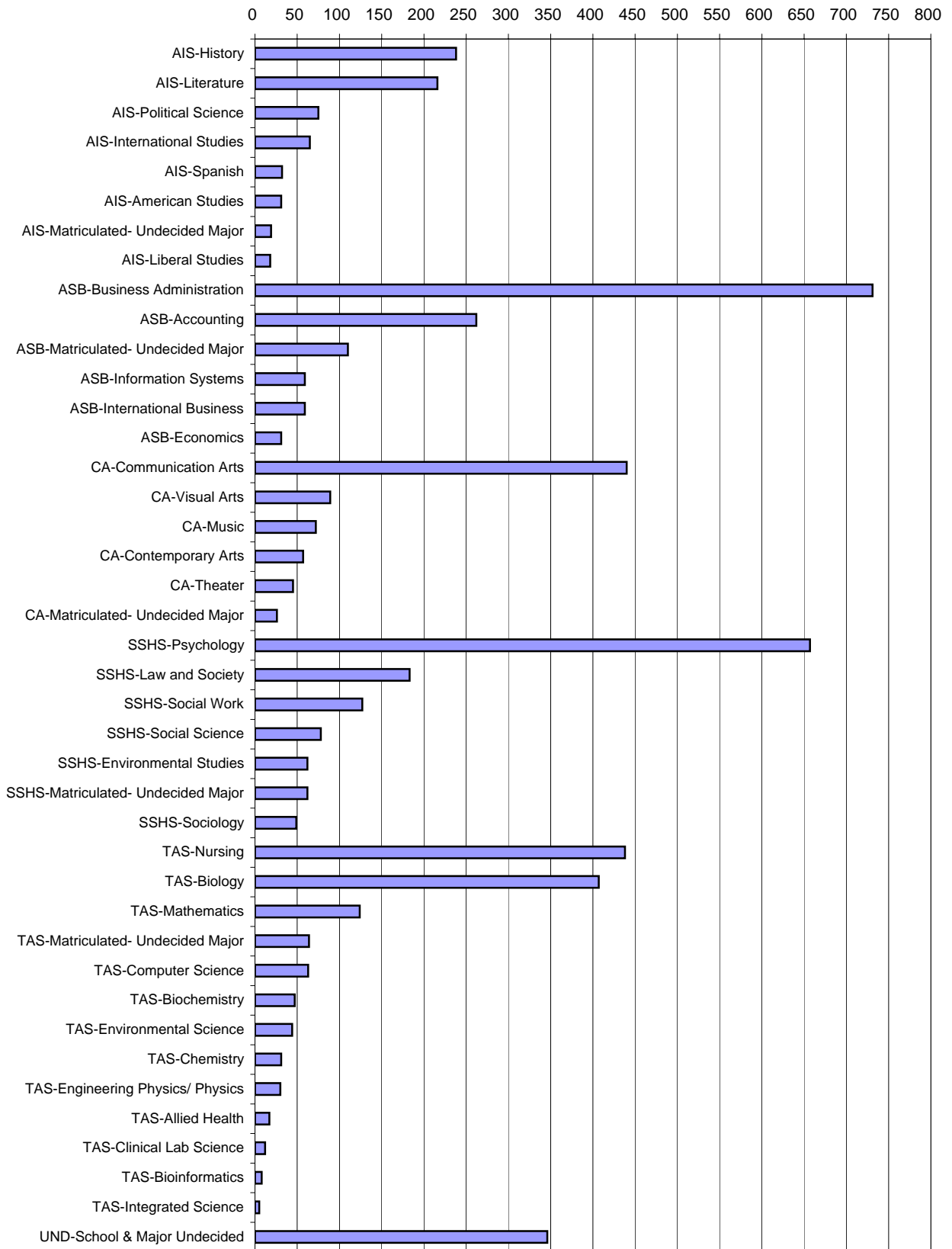
[1] Matriculated undergraduates (N = 5,529)



By School and Major, Matriculated Undergraduates (N= 5,529)

ASB	Accounting	262	4.7%
	Business Administration	731	13.2%
	Economics	31	0.6%
	Information Systems	59	1.1%
	International Business	59	1.1%
	Matriculated- Undecided Major	110	2.0%
AIS	American Studies	31	0.6%
	History	238	4.3%
	International Studies	65	1.2%
	Liberal Studies	18	0.3%
	Literature	216	3.9%
	Political Science	75	1.4%
	Spanish	32	0.6%
	Matriculated- Undecided Major	19	0.3%
CA	Communication Arts	440	8.0%
	Contemporary Arts	57	1.0%
	Music	72	1.3%
	Theater	45	0.8%
	Visual Arts	89	1.6%
	Matriculated- Undecided Major	26	0.5%
SSHS	Environmental Studies	62	1.1%
	Law and Society	183	3.3%
	Psychology	657	11.9%
	Social Science	78	1.4%
	Social Work	127	2.3%
	Sociology	49	0.9%
	Matriculated- Undecided Major	62	1.1%
TAS	Allied Health	17	0.3%
	Biochemistry	47	0.9%
	Bioinformatics	8	0.1%
	Biology	407	7.4%
	Chemistry	31	0.6%
	Clinical Lab Science	12	0.2%
	Computer Science	63	1.1%
	Engineering Physics/ Physics	30	0.5%
	Environmental Science	44	0.8%
	Integrated Science	5	0.1%
	Mathematics	124	2.2%
	Nursing	438	7.9%
	Matriculated- Undecided Major	64	1.2%
UND	School & Major Undecided	346	6.3%

**FALL 2009 MATRICULATED UNDERGRADUATE
ENROLLMENT BY SCHOOL AND MAJOR**

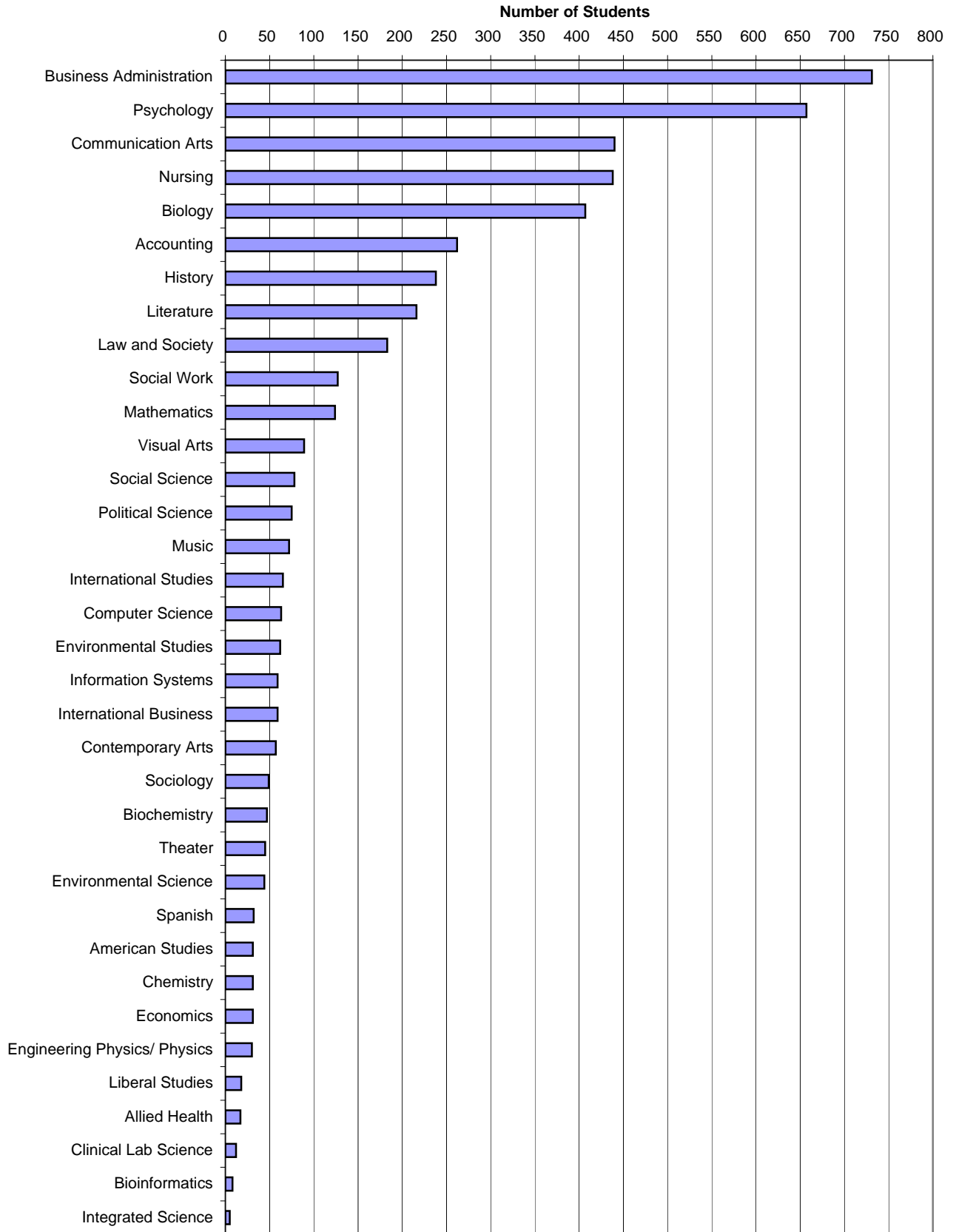


By Major, Matriculated Undergraduates (N = 5,529)

Accounting	262	5.3%
Allied Health	17	0.3%
American Studies	31	0.6%
Biochemistry	47	1.0%
Bioinformatics	8	0.2%
Biology	407	8.3%
Business Administration	731	14.9%
Chemistry	31	0.6%
Clinical Lab Sciences	12	0.2%
Communication Arts	440	9.0%
Computer Science	63	1.3%
Contemporary Arts	57	1.2%
Economics	31	0.6%
Engineering Physics/ Physics	30	0.6%
Environmental Science	44	0.9%
Environmental Studies	62	1.3%
History	238	4.9%
Information Systems	59	1.2%
Integrated Science Studies	5	0.1%
International Business	59	1.2%
International Studies	65	1.3%
Law and Society	183	3.7%
Liberal Studies	18	0.4%
Literature	216	4.4%
Mathematics	124	2.5%
Music	72	1.5%
Nursing	438	8.9%
Political Science	75	1.5%
Psychology	657	13.4%
Social Science	78	1.6%
Social Work	127	2.6%
Sociology	49	1.0%
Spanish Language Studies	32	0.7%
Theater	45	0.9%
Visual Arts	89	1.8%
Undecided Major	627	N/A
	5,529	

TOTAL FALL 2009 ENROLLMENT = 6,026

**FALL 2009 MATRICULATED UNDERGRADUATE
ENROLLMENT BY PRIMARY MAJOR**



MATRICULATED UNDERGRADUATES (N = 5,529) BY SCHOOL, MAJOR, AND REGISTRATION TYPE

		First-time Undergraduate		Transfer Undergraduate		Readmitted Undergraduate		Continuing Undergraduate	
		Number	Row Pct	Number	Row Pct	Number	Row Pct	Number	Row Pct
ASB	Accounting	37	14.1%	31	11.8%	1	0.4%	193	73.7%
	Business Administration	75	10.3%	87	11.9%	4	0.5%	565	77.3%
	Economics	5	16.1%	3	9.7%	0	0.0%	23	74.2%
	Information Systems	5	8.5%	5	8.5%	1	1.7%	48	81.4%
	International Business	9	15.3%	5	8.5%	0	0.0%	45	76.3%
	Matriculated- Undecided Major	37	33.6%	8	7.3%	1	0.9%	64	58.2%
AIS	American Studies	2	6.5%	8	25.8%	0	0.0%	21	67.7%
	History	36	15.1%	32	13.4%	4	1.7%	166	69.7%
	International Studies	7	10.8%	8	12.3%	2	3.1%	48	73.8%
	Liberal Studies	5	27.8%	4	22.2%	0	0.0%	9	50.0%
	Literature	27	12.5%	37	17.1%	3	1.4%	149	69.0%
	Political Science	15	20.0%	6	8.0%	1	1.3%	53	70.7%
	Spanish Language Studies	3	9.4%	3	9.4%	1	3.1%	25	78.1%
	Matriculated- Undecided Major	4	21.1%	0	0.0%	0	0.0%	15	78.9%
CA	Communication Arts	63	14.3%	51	11.6%	2	0.5%	324	73.6%
	Contemporary Arts	1	1.8%	0	0.0%	1	1.8%	55	96.5%
	Music	12	16.7%	5	6.9%	1	1.4%	54	75.0%
	Theater	4	8.9%	9	20.0%	0	0.0%	32	71.1%
	Visual Arts	16	18.0%	11	12.4%	0	0.0%	62	69.7%
	Matriculated- Undecided Major	9	34.6%	2	7.7%	0	0.0%	15	57.7%
SSHS	Environmental Studies	6	9.7%	11	17.7%	1	1.6%	44	71.0%
	Law and Society	21	11.5%	24	13.1%	5	2.7%	133	72.7%
	Psychology	88	13.4%	71	10.8%	5	0.8%	493	75.0%
	Social Science	2	4.1%	4	8.2%	1	2.0%	42	85.7%
	Social Work	13	10.2%	30	23.6%	0	0.0%	84	66.1%
	Sociology	6	7.7%	18	23.1%	0	0.0%	54	69.2%
	Matriculated- Undecided Major	15	24.2%	7	11.3%	1	1.6%	39	62.9%
TAS	Allied Health	5	29.4%	0	0.0%	0	0.0%	12	70.6%
	Biochemistry	6	12.8%	3	6.4%	0	0.0%	38	80.9%
	Bioinformatics	2	25.0%	1	12.5%	0	0.0%	5	62.5%
	Biology	82	20.1%	35	8.6%	1	0.2%	289	71.0%
	Chemistry	4	12.9%	2	6.5%	0	0.0%	25	80.6%
	Clinical Lab Science	1	8.3%	1	8.3%	0	0.0%	10	83.3%
	Computer Science	11	17.5%	6	9.5%	3	4.8%	43	68.3%
	Engineering Physics/ Physics	3	10.0%	4	13.3%	0	0.0%	23	76.7%
	Environmental Science	8	18.2%	3	6.8%	0	0.0%	33	75.0%
	Integrated Science	0	0.0%	1	20.0%	0	0.0%	4	80.0%
	Mathematics	30	24.2%	10	8.1%	1	0.8%	83	66.9%
	Nursing	98	22.4%	22	5.0%	6	1.4%	312	71.2%
	Matriculated- Undecided Major	28	43.8%	6	9.4%	0	0.0%	30	46.9%
UND	School & Major Undecided	136	39.3%	34	9.8%	1	0.3%	175	50.6%
		937	16.9%	608	11.0%	47	0.9%	3,937	71.2%

By School, Primary Major and Primary Concentration Track, Matriculated Undergraduates, Fall 2009

Anisfield School of Business

		<u>Count</u>	<u>Pct. of Major</u>
Business Administration	Finance	166	22.7%
	Management	220	30.1%
	Marketing	208	28.5%
	Unspecified	<u>137</u>	18.7%
		731	100.0%

Contemporary Arts

Communication Arts	Creative Writing	41	9.3%
	Design & Interactive Media	98	22.3%
	Digital Filmmaking	62	14.1%
	Journalism	79	18.0%
	Media & Cinema Studies	82	18.6%
	Unspecified	<u>78</u>	17.7%
	440	100.0%	

Music	Music Industry	25	34.7%
	Music Production	14	19.4%
	Music Performance	11	15.3%
	Music Studies	1	1.4%
	Unspecified	<u>21</u>	29.2%
	72	100.0%	

Theater	Acting	16	35.6%
	Design/Technical Theater	6	13.3%
	Directing/Stage Management	4	8.9%
	Theater Studies	4	8.9%
	Unspecified	<u>15</u>	33.3%
	45	100.0%	

Visual Arts	Art History	4	4.5%
	Drawing / Painting	17	19.1%
	Art & Technology	4	4.5%
	Photography	7	7.9%
	Sculpture	1	1.1%
	Unspecified	<u>56</u>	62.9%
	89	100.0%	

Social Science and Human Services

		<u>Count</u>	<u>Pct. of Major</u>
Social Science	Community Mental Health	13	26.5%
	Criminology	1	2.0%
	Unspecified	<u>35</u>	71.4%
		49	100.0%

Theoretical and Applied Science

Allied Health	Diagnostic Medical Sonography	3	17.6%
	Nuclear Medicine Technology	1	5.9%
	Respiratory Care	1	5.9%
	unspecified	<u>12</u>	70.6%
		17	100.0%

Clinical Lab Science		2	16.7%
		1	8.3%
		<u>9</u>	75.0%
		12	100.0%

Biology	Physician's Assistant	20	4.9%
	Physical Therapy	52	12.8%
	Chiropractic	3	0.7%
	Dental	24	5.9%
	Optometry	4	1.0%
	Podiatry	2	0.5%
	Unspecified	<u>302</u>	74.2%
	407	100.0%	

Nursing	RN/BSN	62	14.2%
	Generic BSN	<u>376</u>	85.8%
		438	100.0%

Provisional Status by Major and Primary Concentration/Track within Major, Matriculated Undergraduates

Primary Major and Concentration/Track	Officially Accepted Majors		Provisional Majors		Total Majors
	Number	Pct. of Total	Number	Pct. of Total	
Accounting	178	67.9%	84	32.1%	262
Business Admin. (Finance)	123	74.1%	43	25.9%	166
Business Admin. (Management)	155	70.5%	65	29.5%	220
Business Admin. (Marketing)	143	68.8%	65	31.3%	208
Business Admin. (Unspecified)	<u>58</u>	<u>42.3%</u>	<u>79</u>	<u>57.7%</u>	<u>137</u>
	479	65.5%	252	34.5%	731
Communication Arts (Creative Writing)	41	100.0%	0	0.0%	41
Com. Art. (Design & Interactive Media)	98	100.0%	0	0.0%	98
Com. Art. (Digital Filmmaking)	62	100.0%	0	0.0%	62
Com. Art. (Journalism)	79	100.0%	0	0.0%	79
Com. Art. (Media & Cinema Studies)	82	100.0%	0	0.0%	82
Com. Art. (Unspecified)	<u>78</u>	<u>100.0%</u>	<u>0</u>	<u>0.0%</u>	<u>78</u>
	440	100.0%	0	0.0%	440
Economics	20	64.5%	11	35.5%	31
Information Systems	44	74.6%	15	25.4%	59
International Business	43	72.9%	16	27.1%	59
Nursing (RN/BSN)	62	100.0%	0	0.0%	62
Nursing (Generic BSN)	<u>376</u>	<u>100.0%</u>	<u>0</u>	<u>0.0%</u>	<u>376</u>
	438	100.0%	0	0.0%	438
Social Work	127	100.0%	0	0.0%	127
Total	3,126	83.2%	630	16.8%	3,756

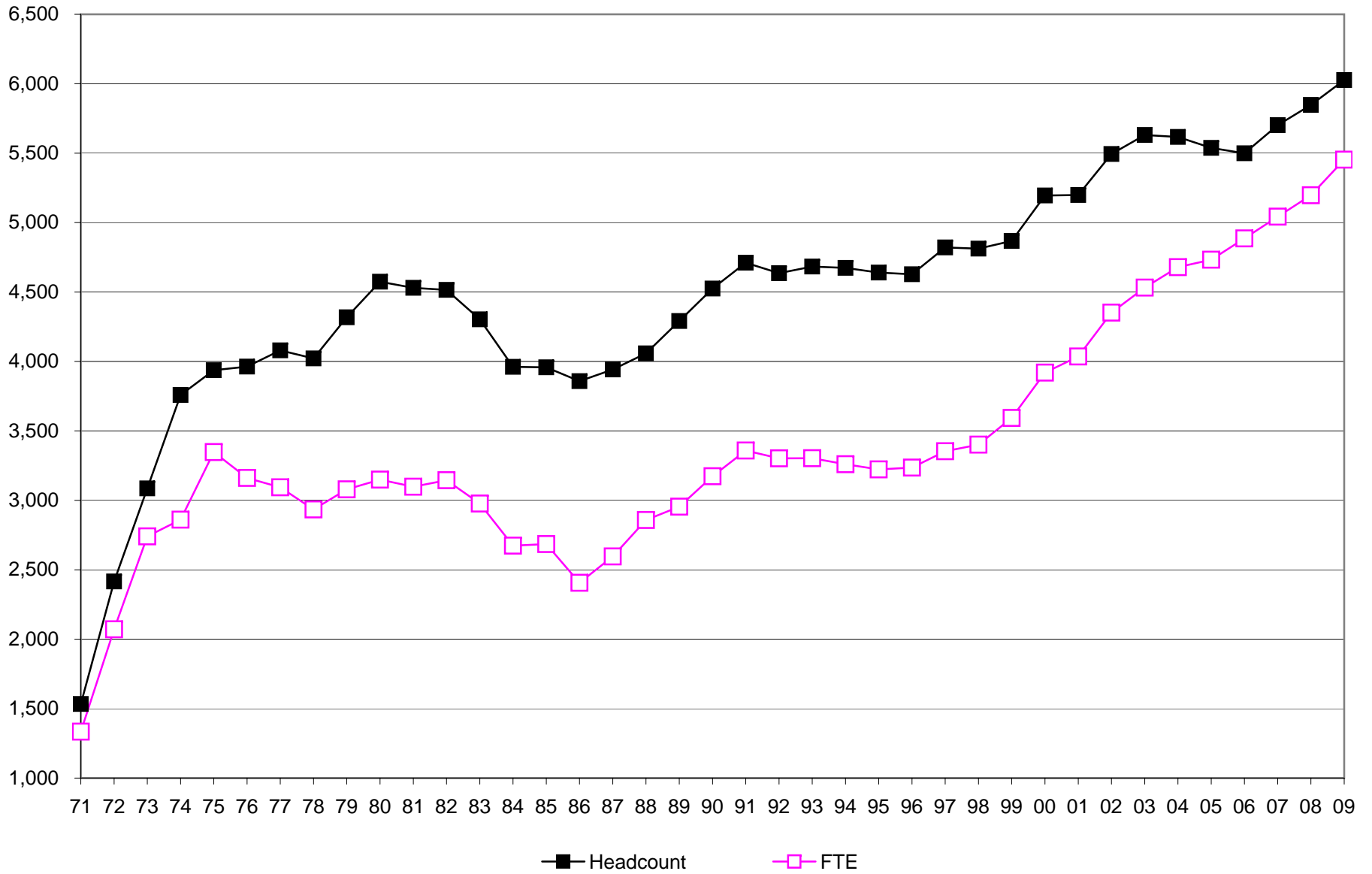
By Certificate Program

	Baccalaureate students		Post-baccalaureate students		All Students ^[1]	
Teacher Certification - Art	9	3.1%	3	3.9%	12	3.3%
Teacher Certification - Biology	15	5.2%	6	7.9%	21	5.7%
Teacher Certification - Business	5	1.7%	3	3.9%	8	2.2%
Teacher Certification - Chemistry	2	0.7%		0.0%	2	0.5%
Teacher Certification - Drama	0	0.0%		0.0%	0	0.0%
Teacher Certification - Earth Science	6	2.1%		0.0%	6	1.6%
Teacher Certification - Elementary Education	141	48.6%	23	30.3%	164	44.8%
Teacher Certification - English	30	10.3%	15	19.7%	45	12.3%
Teacher Certification - Foreign Language/French	9	3.1%		0.0%	9	2.5%
Teacher Certification - Foreign Language/Italian	0	0.0%		0.0%	0	0.0%
Teacher Certification - Foreign Language/Spanish	0	0.0%		0.0%	0	0.0%
Teacher Certification - Mathematics	27	9.3%	6	7.9%	33	9.0%
Teacher Certification - Music	3	1.0%	1	1.3%	4	1.1%
Teacher Certification - Physical Science	0	0.0%		0.0%	0	0.0%
Teacher Certification - Physics	1	0.3%		0.0%	1	0.3%
Teacher Certification - Social Studies	42	14.5%	19	25.0%	61	16.7%
Teacher Certification - general	0	0.0%		0.0%	0	0.0%
TOTAL	290		76		366	

[1] Includes Major1 and Major2.

Year	HEADCOUNT			FTE		
	Total Headcount	Percent Change From Previous Fall Semester	Cumulative Percent Change From Fall 1971	Total FTE	Percent Change From Previous Fall Semester	Cumulative Percent Change From Fall 1971
1971	1,533	N/A	0.0%	1,334	N/A	0.0%
1972	2,416	57.6%	57.6%	2,071	55.2%	55.2%
1973	3,086	27.7%	101.3%	2,740	32.3%	105.4%
1974	3,759	21.8%	145.2%	2,861	4.4%	114.5%
1975	3,937	4.7%	156.8%	3,347	17.0%	150.9%
1976	3,963	0.7%	158.5%	3,161	-5.6%	137.0%
1977	4,080	3.0%	166.1%	3,094	-2.1%	131.9%
1978	4,022	-1.4%	162.4%	2,934	-5.2%	119.9%
1979	4,318	7.4%	181.7%	3,079	4.9%	130.8%
1980	4,574	5.9%	198.4%	3,149	2.3%	136.1%
1981	4,530	-1.0%	195.5%	3,098	-1.6%	132.2%
1982	4,515	-0.3%	194.5%	3,145	1.5%	135.8%
1983	4,303	-4.7%	180.7%	2,977	-5.3%	123.2%
1984	3,961	-7.9%	158.4%	2,674	-10.2%	100.4%
1985	3,958	-0.1%	158.2%	2,685	0.4%	101.3%
1986	3,858	-2.5%	151.7%	2,406	-10.4%	80.4%
1987	3,942	2.2%	157.1%	2,596	7.9%	94.6%
1988	4,058	2.9%	164.7%	2,858	10.1%	114.2%
1989	4,291	5.7%	179.9%	2,954	3.4%	121.4%
1990	4,525	5.5%	195.2%	3,173	7.4%	137.9%
1991	4,711	4.1%	207.3%	3,359	5.9%	151.8%
1992	4,636	-1.6%	202.4%	3,302	-1.7%	147.5%
1993	4,683	1.0%	205.5%	3,303	0.0%	147.6%
1994	4,674	-0.2%	204.9%	3,260	-1.3%	144.4%
1995	4,640	-0.7%	202.7%	3,223	-1.1%	141.6%
1996	4,628	-0.3%	201.9%	3,236	0.4%	142.6%
1997	4,821	4.2%	214.5%	3,353	3.6%	151.3%
1998	4,812	-0.2%	213.9%	3,401	1.4%	154.9%
1999	4,868	1.2%	217.5%	3,593	5.6%	169.3%
2000	5,195	6.7%	238.9%	3,920	9.1%	193.9%
2001	5,199	0.1%	239.1%	4,036	3.0%	202.5%
2002	5,494	5.7%	258.4%	4,352	7.8%	226.2%
2003	5,631	2.5%	267.3%	4,532	4.1%	239.7%
2004	5,617	-0.2%	266.4%	4,679	3.2%	250.7%
2005	5,538	-1.4%	261.3%	4,733	1.2%	254.8%
2006	5,499	-0.7%	258.7%	4,886	3.2%	266.3%
2007	5,702	3.7%	272.0%	5,043	3.2%	278.0%
2008	5,847	2.5%	281.4%	5,197	3.1%	289.6%
2009	6,026	3.1%	293.1%	5,453	4.9%	308.8%

TOTAL ENROLLMENT, FALL 1971 TO FALL 2009



TOTAL FALL 2009 ENROLLMENT = 6,026

Year	Undergraduate Headcount			Undergraduate FTE			Graduate Headcount			Graduate FTE		
	Total Undergrad Headcount	Percent Change From Previous Fall Semester	Cumulative Percent Change From Fall 1971	Total Undergrad FTE	Percent Change From Previous Fall Semester	Cumulative Percent Change From Fall 1971	Graduate Headcount	Percent Change From Previous Fall Semester	Cumulative Percent Change From Fall 1995	Total Graduate FTE	Percent Change From Previous Fall Semester	Cumulative Percent Change From Fall 1995
1971	1,533	N/A	0.0%	1,334	N/A	0.0%	-	-	-	-	-	-
1972	2,416	57.6%	57.6%	2,071	55.2%	55.2%	-	-	-	-	-	-
1973	3,086	27.7%	101.3%	2,740	32.3%	105.4%	-	-	-	-	-	-
1974	3,759	21.8%	145.2%	2,861	4.4%	114.5%	-	-	-	-	-	-
1975	3,937	4.7%	156.8%	3,347	17.0%	150.9%	-	-	-	-	-	-
1976	3,963	0.7%	158.5%	3,161	-5.6%	137.0%	-	-	-	-	-	-
1977	4,080	3.0%	166.1%	3,094	-2.1%	131.9%	-	-	-	-	-	-
1978	4,022	-1.4%	162.4%	2,934	-5.2%	119.9%	-	-	-	-	-	-
1979	4,318	7.4%	181.7%	3,079	4.9%	130.8%	-	-	-	-	-	-
1980	4,574	5.9%	198.4%	3,149	2.3%	136.1%	-	-	-	-	-	-
1981	4,530	-1.0%	195.5%	3,098	-1.6%	132.2%	-	-	-	-	-	-
1982	4,515	-0.3%	194.5%	3,145	1.5%	135.8%	-	-	-	-	-	-
1983	4,303	-4.7%	180.7%	2,977	-5.3%	123.2%	-	-	-	-	-	-
1984	3,961	-7.9%	158.4%	2,674	-10.2%	100.4%	-	-	-	-	-	-
1985	3,958	-0.1%	158.2%	2,685	0.4%	101.3%	-	-	-	-	-	-
1986	3,858	-2.5%	151.7%	2,406	-10.4%	80.4%	-	-	-	-	-	-
1987	3,942	2.2%	157.1%	2,596	7.9%	94.6%	-	-	-	-	-	-
1988	4,058	2.9%	164.7%	2,858	10.1%	114.2%	-	-	-	-	-	-
1989	4,291	5.7%	179.9%	2,954	3.4%	121.4%	-	-	-	-	-	-
1990	4,525	5.5%	195.2%	3,173	7.4%	137.9%	-	-	-	-	-	-
1991	4,711	4.1%	207.3%	3,359	5.9%	151.8%	-	-	-	-	-	-
1992	4,636	-1.6%	202.4%	3,302	-1.7%	147.5%	-	-	-	-	-	-
1993	4,683	1.0%	205.5%	3,303	0.0%	147.6%	-	-	-	-	-	-
1994	4,674	-0.2%	204.9%	3,260	-1.3%	144.4%	-	-	-	-	-	-
1995	4,543	-2.8%	196.3%	3,176	-2.6%	138.1%	97	N/A	0.0%	47	N/A	0.0%
1996	4,526	-0.4%	195.2%	3,193	0.5%	139.4%	102	5.2%	5.2%	43	-8.5%	-8.5%
1997	4,681	3.4%	205.3%	3,287	2.9%	146.4%	140	37.3%	44.3%	66	53.5%	40.4%
1998	4,658	-0.5%	203.8%	3,350	1.9%	151.1%	154	10.0%	58.8%	51	-22.7%	8.5%
1999	4,655	-0.1%	203.7%	3,508	4.7%	163.0%	213	38.3%	119.6%	85	66.7%	80.9%
2000	4,906	5.4%	220.0%	3,805	8.5%	185.2%	289	35.7%	197.9%	115	35.3%	144.7%
2001	4,890	-0.3%	219.0%	3,918	3.0%	193.7%	309	6.9%	218.6%	118	2.6%	151.1%
2002	5,143	5.2%	235.5%	4,215	7.6%	216.0%	351	13.6%	261.9%	137	16.1%	191.5%
2003	5,242	1.9%	241.9%	4,378	3.9%	228.2%	389	10.8%	301.0%	154	12.4%	227.7%
2004	5,278	0.7%	244.3%	4,536	3.6%	240.0%	339	-12.9%	249.5%	143	-7.1%	204.3%
2005	5,233	-0.9%	241.4%	4,606	1.5%	245.3%	305	-10.0%	214.4%	127	-11.2%	170.2%
2006	5,188	-0.9%	238.4%	4,768	3.5%	257.4%	311	2.0%	220.6%	118	-7.1%	151.1%
2007	5,393	4.0%	251.8%	4,919	3.2%	268.7%	309	-0.6%	218.6%	124	5.1%	163.8%
2008	5,561	3.1%	262.8%	5,085	3.4%	281.2%	286	-7.4%	194.8%	112	-9.7%	138.3%
2009	5,776	3.9%	276.8%	5,353	5.3%	301.3%	250	-12.6%	157.7%	100	-10.7%	112.8%

**ENROLLMENT TRENDS FOR NEW, TRANSFER, READMITTED, CONTINUING, AND NONDEGREE STUDENTS
COMBINED UNDERGRADUATE AND GRADUATE, FALL 2005 TO FALL 2009**

	2005		2006		2007		2008		2009		Percent Change 05 to 09	Percent Change 08 to 09
	No.	Pct.	No.	Pct.	No.	Pct.	No.	Pct.	No.	Pct.		
First-time Undergraduates	748	13.5%	814	14.8%	902	15.8%	880	15.1%	937	15.5%	25.3%	6.5%
First-time Graduate Students	<u>68</u>	<u>1.2%</u>	<u>58</u>	<u>1.1%</u>	<u>79</u>	<u>1.4%</u>	<u>64</u>	<u>1.1%</u>	<u>26</u>	<u>0.4%</u>	-61.8%	-59.4%
<i>Subtotal: First-time</i>	816	14.7%	872	15.9%	981	17.2%	944	16.1%	963	16.0%	18.0%	2.0%
Undergraduate Transfers [1]	472	8.5%	610	11.1%	616	10.8%	621	10.6%	608	10.1%	28.8%	-2.1%
Graduate Transfers	<u>0</u>	<u>0.0%</u>	<u>0</u>	<u>0.0%</u>	<u>0</u>	<u>0.0%</u>	<u>0</u>	<u>0.0%</u>	<u>0</u>	<u>0.0%</u>	N/A	N/A
<i>Subtotal: Transfers</i>	472	8.5%	610	11.1%	616	10.8%	621	10.6%	608	10.1%	28.8%	-2.1%
Undergraduate Readmits [2]	68	1.2%	59	1.1%	68	1.2%	55	0.9%	47	0.8%	-30.9%	-14.5%
Graduate Readmits	<u>1</u>	<u>0.0%</u>	<u>0</u>	<u>0.0%</u>	<u>0</u>	<u>0.0%</u>	<u>6</u>	<u>0.1%</u>	<u>3</u>	<u>0.0%</u>	200.0%	-50.0%
<i>Subtotal: Readmits</i>	69	1.2%	59	1.1%	68	1.2%	61	1.0%	50	0.8%	-27.5%	-18.0%
Undergraduate Continuing [3]	3,572	64.5%	3,423	62.2%	3,528	61.9%	3,728	63.8%	3,937	65.3%	10.2%	5.6%
Graduate Continuing	<u>157</u>	<u>2.8%</u>	<u>136</u>	<u>2.5%</u>	<u>154</u>	<u>2.7%</u>	<u>155</u>	<u>2.7%</u>	<u>184</u>	<u>3.1%</u>	17.2%	18.7%
<i>Subtotal: Continuing</i>	3,729	67.3%	3,559	64.7%	3,682	64.6%	3,883	66.4%	4,121	68.4%	10.5%	6.1%
UG Nondegree - New [4]	241	4.4%	165	3.0%	205	3.6%	214	3.7%	184	3.1%	-23.7%	-14.0%
UG Nondegree - Continuing	132	2.4%	117	2.1%	74	1.3%	63	1.1%	63	1.0%	-52.3%	0.0%
Grad Nondegree - New	25	0.5%	21	0.4%	34	0.6%	47	0.8%	25	0.4%	0.0%	-46.8%
Grad Nondegree - Continuing	<u>54</u>	<u>1.0%</u>	<u>96</u>	<u>1.7%</u>	<u>42</u>	<u>0.7%</u>	<u>14</u>	<u>0.2%</u>	<u>12</u>	<u>0.2%</u>	-77.8%	-14.3%
<i>Subtotal: Nondegree</i>	452	8.2%	399	7.3%	355	6.2%	338	5.8%	284	4.7%	-37.2%	-16.0%
TOTAL	5,538		5,499		5,702		5,847		6,026		8.8%	3.1%

[1] Excludes "stop-outs" (students absent for only one semester who need not apply for formal readmission) and "internal transfers" (students who change from nondegree-seeking to degree-seeking status and have registration type "Ramapo Non-Matriculant").

[2] Excludes "stop-outs" and "internal transfers."

[3] Includes "stop-outs" and "internal transfers."

ENROLLMENT BY AGE, FALL 2005 TO FALL 2009

Undergraduate Students	Fall 2005		Fall 2006		Fall 2007		Fall 2008		Fall 2009		Pct. Change 05 to 09	Pct. Change 08 to 09
	No.	Pct.	No.	Pct.	No.	Pct.	No.	Pct.	No.	Pct.		
Less Than 20	1,446	27.6%	1,463	28.2%	1,617	30.0%	1,666	30.0%	1,689	29.2%	16.8%	1.4%
20 to 24	2,857	54.6%	2,953	56.9%	3,070	56.9%	3,219	57.9%	3,444	59.6%	20.5%	7.0%
25 to 29	356	6.8%	310	6.0%	303	5.6%	314	5.6%	274	4.7%	-23.0%	-12.7%
30 to 39	266	5.1%	219	4.2%	193	3.6%	168	3.0%	177	3.1%	-33.5%	5.4%
40 and Over	308	5.9%	243	4.7%	210	3.9%	194	3.5%	192	3.3%	-37.7%	-1.0%
Missing	0	N/A	0	N/A	0	N/A	0	N/A	N/A	N/A	N/A	N/A
Total	5,233		5,188		5,393		5,561		5,776		10.4%	3.9%

Graduate Students	Fall 2005		Fall 2006		Fall 2007		Fall 2008		Fall 2009		Pct. Change 05 to 09	Pct. Change 08 to 09
	No.	Pct.	No.	Pct.	No.	Pct.	No.	Pct.	No.	Pct.		
Less Than 20	0	0.0%	0	0.0%	0	0.0%	0	0.0%	0	0.0%	N/A	N/A
20 to 24	21	6.9%	19	6.1%	20	6.5%	20	7.0%	27	10.8%	28.6%	35.0%
25 to 29	85	27.9%	91	29.4%	77	24.9%	75	26.2%	75	30.0%	-11.8%	0.0%
30 to 39	74	24.3%	72	23.2%	83	26.9%	81	28.3%	53	21.2%	-28.4%	-34.6%
40 and Over	125	41.0%	128	41.3%	129	41.7%	110	38.5%	95	38.0%	-24.0%	-13.6%
Missing	0	N/A	1	N/A	0	N/A	0	N/A	0	N/A	N/A	N/A
Total	305		311		309		286		250		-18.0%	-12.6%

All Students	Fall 2005		Fall 2006		Fall 2007		Fall 2008		Fall 2009		Pct. Change 05 to 09	Pct. Change 08 to 09
	No.	Pct.	No.	Pct.	No.	Pct.	No.	Pct.	No.	Pct.		
Less Than 20	1,446	26.1%	1,463	26.6%	1,617	28.4%	1,666	28.5%	1,689	28.0%	16.8%	1.4%
20 to 24	2,878	52.0%	2,972	54.1%	3,090	54.2%	3,239	55.4%	3,471	57.6%	20.6%	7.2%
25 to 29	441	8.0%	401	7.3%	380	6.7%	389	6.7%	349	5.8%	-20.9%	-10.3%
30 to 39	340	6.1%	291	5.3%	276	4.8%	249	4.3%	230	3.8%	-32.4%	-7.6%
40 and Over	433	7.8%	371	6.7%	339	5.9%	304	5.2%	287	4.8%	-33.7%	-5.6%
Missing	0	N/A	1	N/A	0	N/A	0	N/A	0	N/A	N/A	N/A
Total	5,538		5,499		5,702		5,847		6,026		8.8%	3.1%

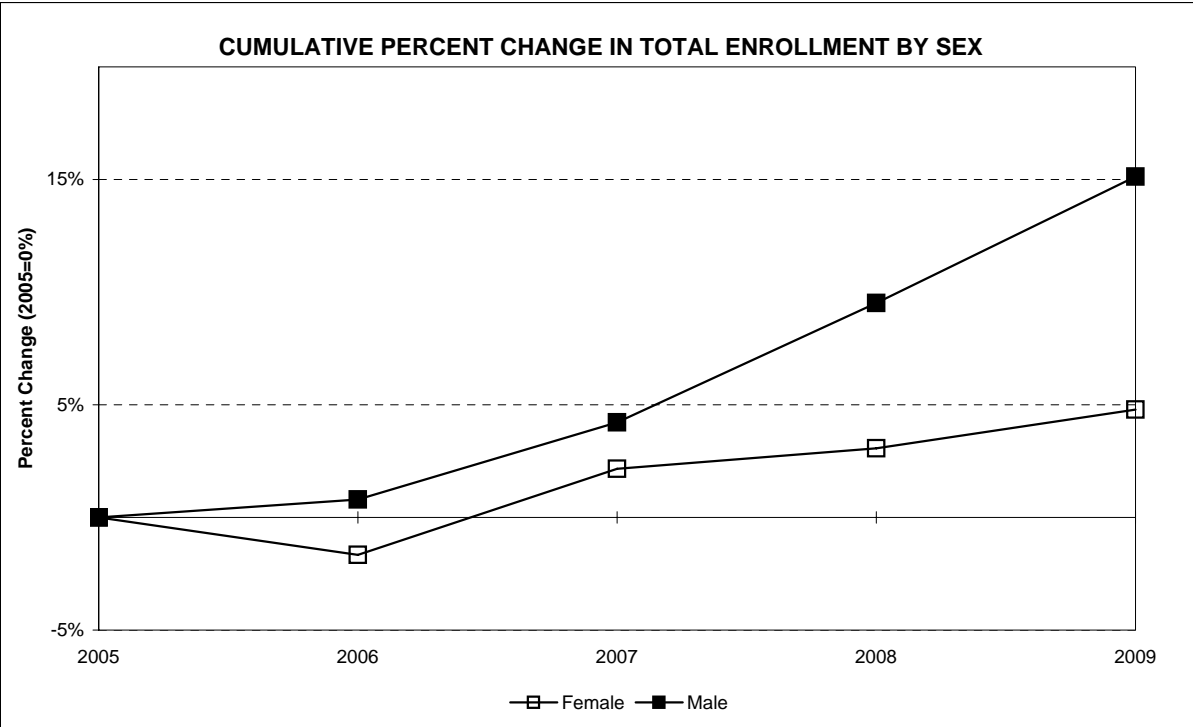
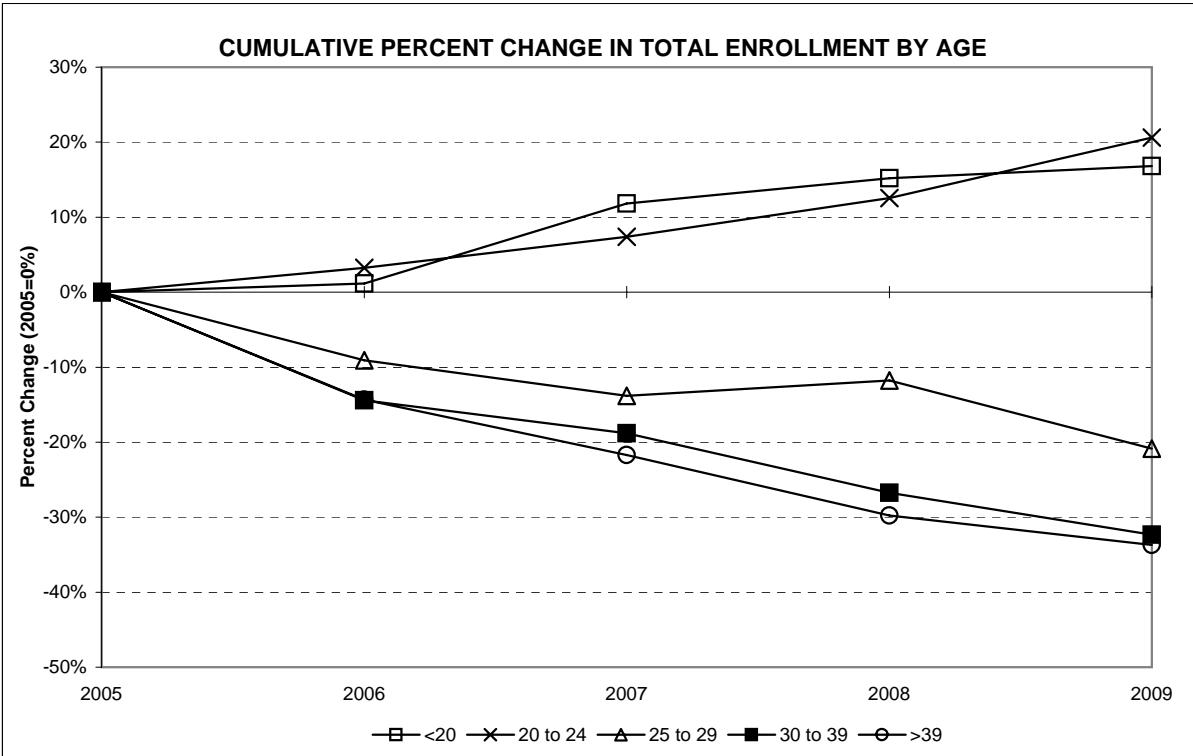


ENROLLMENT BY SEX, FALL 2005 TO FALL 2009

Undergraduate Students	Fall 2005		Fall 2006		Fall 2007		Fall 2008		Fall 2009		Pct. Change 05 to 09	Pct. Change 08 to 09
	No.	Pct.	No.	Pct.	No.	Pct.	No.	Pct.	No.	Pct.		
Female	3,139	60.0%	3,088	59.5%	3,222	59.7%	3,271	58.8%	3,356	58.1%	6.9%	2.6%
Male	2,094	40.0%	2,100	40.5%	2,171	40.3%	2,290	41.2%	2,420	41.9%	15.6%	5.7%
Total	5,233		5,188		5,393		5,561		5,776		10.4%	3.9%

Graduate Students	Fall 2005		Fall 2006		Fall 2007		Fall 2008		Fall 2009		Pct. Change 05 to 09	Pct. Change 08 to 09
	No.	Pct.	No.	Pct.	No.	Pct.	No.	Pct.	No.	Pct.		
Female	245	80.3%	240	77.2%	235	76.1%	217	75.9%	190	76.0%	-22.4%	-12.4%
Male	60	19.7%	71	22.8%	74	23.9%	69	24.1%	60	24.0%	0.0%	-13.0%
Total	305		311		309		286		250		-18.0%	-12.6%

All Students	Fall 2005		Fall 2006		Fall 2007		Fall 2008		Fall 2009		Pct. Change 05 to 09	Pct. Change 08 to 09
	No.	Pct.	No.	Pct.	No.	Pct.	No.	Pct.	No.	Pct.		
Female	3,384	61.1%	3,328	60.5%	3,457	60.6%	3,488	59.7%	3,546	58.8%	4.8%	1.7%
Male	2,154	38.9%	2,171	39.5%	2,245	39.4%	2,359	40.3%	2,480	41.2%	15.1%	5.1%
Total	5,538		5,499		5,702		5,847		6,026		8.8%	3.1%



ENROLLMENT BY ETHNICITY, FALL 2005 TO FALL 2009

Undergraduate Students	Fall 2005		Fall 2006		Fall 2007		Fall 2008		Fall 2009		Pct. Change 05 to 09	Pct. Change 08 to 09
	No.	Pct.	No.	Pct.	No.	Pct.	No.	Pct.	No.	Pct.		
American Indian/Nat. AI.	18	0.3%	16	0.3%	16	0.3%	16	0.3%	21	0.4%	16.7%	31.3%
Asian/Pacific Islander	261	5.0%	257	5.0%	265	4.9%	291	5.2%	298	5.3%	14.2%	2.4%
Black, non-Hispanic	354	6.8%	332	6.4%	338	6.3%	356	6.4%	322	5.7%	-9.0%	-9.6%
Hispanic	417	8.0%	431	8.3%	469	8.7%	491	8.8%	517	9.2%	24.0%	5.3%
White, non-Hispanic	4,183	79.9%	4,152	80.0%	4,305	79.8%	4,396	79.2%	4,470	79.4%	6.9%	1.7%
Missing	0	N/A	0	N/A	0	N/A	11	N/A	148	N/A	N/A	N/A
Total	5,233		5,188		5,393		5,561		5,776		10.4%	3.9%

Graduate Students	Fall 2005		Fall 2006		Fall 2007		Fall 2008		Fall 2009		Pct. Change 05 to 09	Pct. Change 08 to 09
	No.	Pct.	No.	Pct.	No.	Pct.	No.	Pct.	No.	Pct.		
American Indian/Nat. AI.	0	0.0%	0	0.0%	0	0.0%	0	0.0%	0	0.0%	N/A	N/A
Asian/Pacific Islander	9	3.0%	12	3.9%	7	2.3%	4	1.4%	6	2.4%	-33.3%	50.0%
Black, non-Hispanic	11	3.6%	18	5.8%	16	5.2%	10	3.5%	14	5.7%	27.3%	40.0%
Hispanic	7	2.3%	7	2.3%	11	3.6%	11	3.8%	9	3.6%	28.6%	-18.2%
White, non-Hispanic	278	91.1%	274	88.1%	275	89.0%	261	91.3%	218	88.3%	-21.6%	-16.5%
Missing	0	N/A	0	N/A	0	N/A	0	N/A	3	N/A	N/A	N/A
Total	305		311		309		286		250		-18.0%	-12.6%

All Students	Fall 2005		Fall 2006		Fall 2007		Fall 2008		Fall 2009		Pct. Change 05 to 09	Pct. Change 08 to 09
	No.	Pct.	No.	Pct.	No.	Pct.	No.	Pct.	No.	Pct.		
American Indian/Nat. AI.	18	0.3%	16	0.3%	16	0.3%	16	0.3%	21	0.4%	16.7%	31.3%
Asian/Pacific Islander	270	4.9%	269	4.9%	272	4.8%	295	5.1%	304	5.2%	12.6%	3.1%
Black, non-Hispanic	365	6.6%	350	6.4%	354	6.2%	366	6.3%	336	5.7%	-7.9%	-8.2%
Hispanic	424	7.7%	438	8.0%	480	8.4%	502	8.6%	526	9.0%	24.1%	4.8%
White, non-Hispanic	4,461	80.6%	4,426	80.5%	4,580	80.3%	4,657	79.8%	4,688	79.8%	5.1%	0.7%
Missing	0	N/A	0	N/A	0	N/A	11	N/A	151	N/A	N/A	N/A
Total	5,538		5,499		5,702		5,847		6,026		8.8%	3.1%

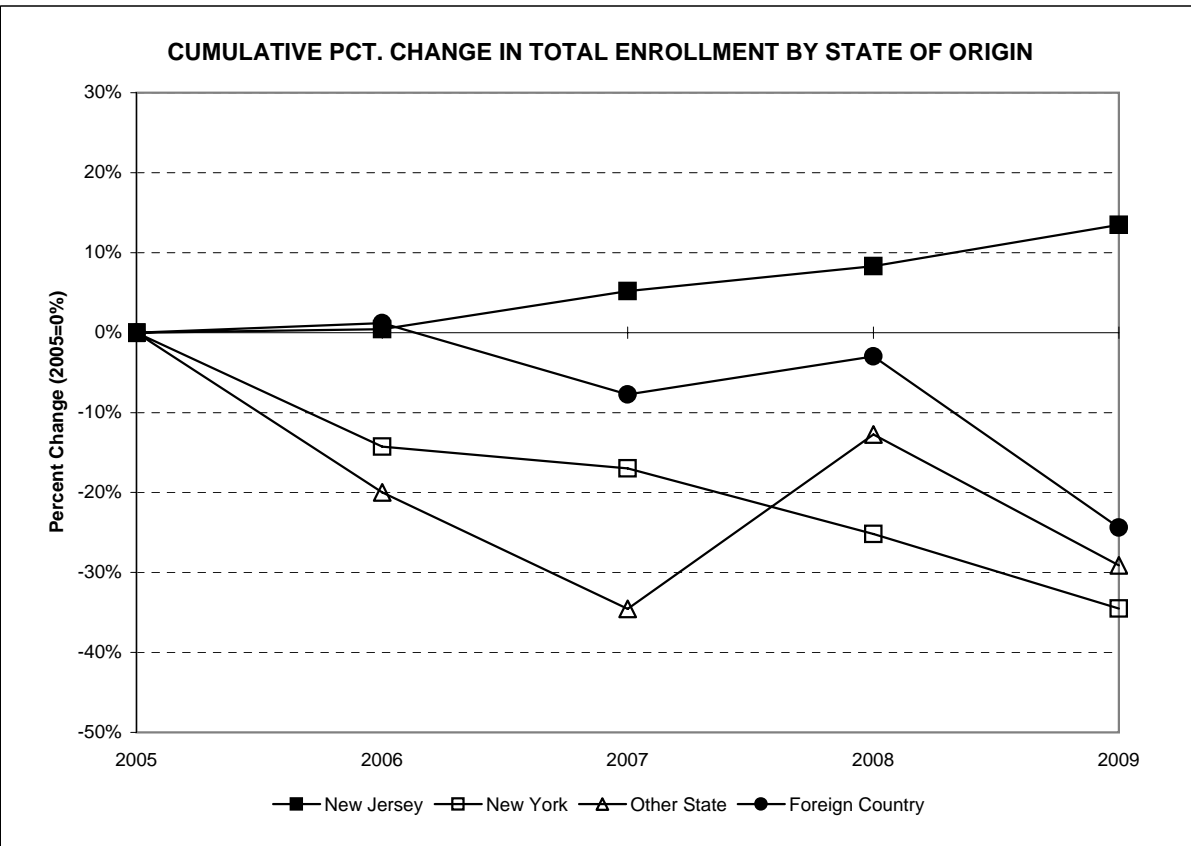
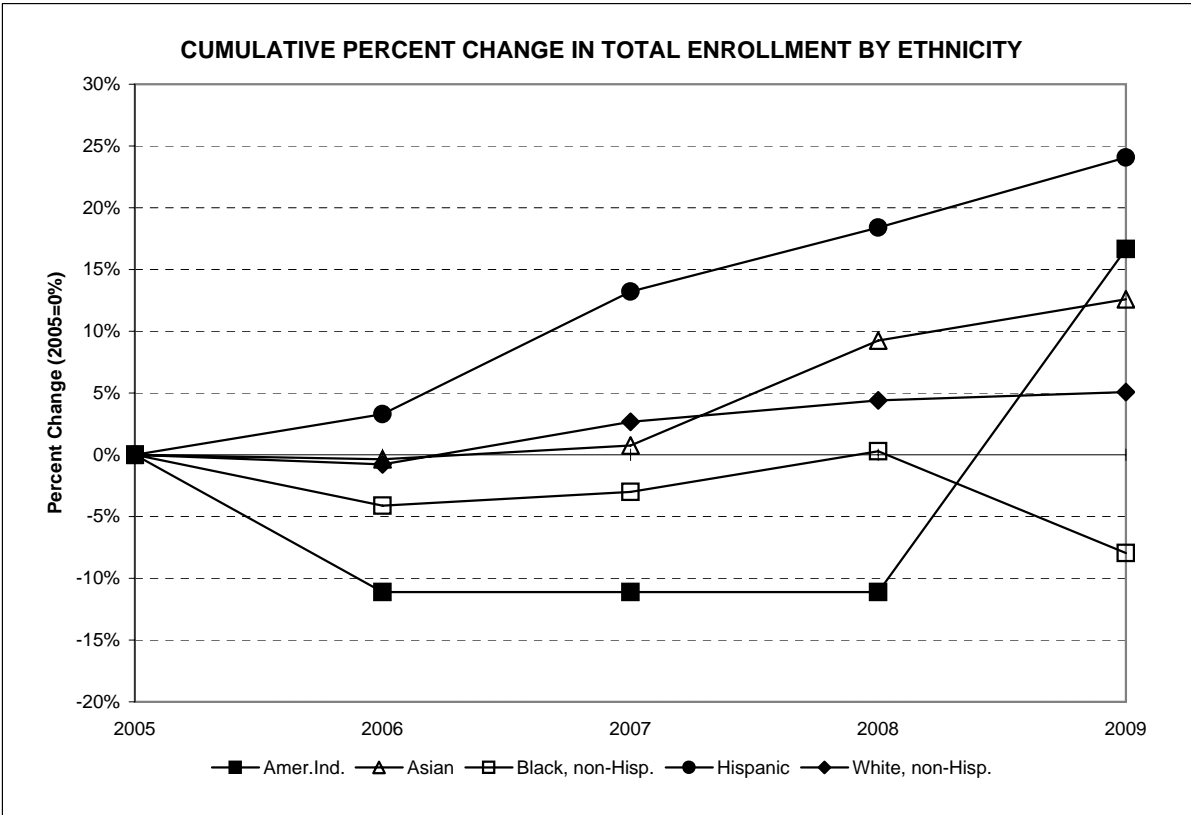


ENROLLMENT BY STATE OF ORIGIN, FALL 2005 TO FALL 2009

Undergraduate Students	Fall 2005		Fall 2006		Fall 2007		Fall 2008		Fall 2009		Pct. Change 05 to 09	Pct. Change 08 to 09
	No.	Pct.	No.	Pct.	No.	Pct.	No.	Pct.	No.	Pct.		
New Jersey	4,668	89.2%	4,686	90.3%	4,918	91.2%	5,090	91.6%	5,379	93.2%	15.2%	5.7%
New York	350	6.7%	294	5.7%	291	5.4%	265	4.8%	230	4.0%	-34.3%	-13.2%
Other U.S. State/Terr.	53	1.0%	42	0.8%	33	0.6%	46	0.8%	38	0.7%	-28.3%	-17.4%
Foreign Country	162	3.1%	166	3.2%	149	2.8%	158	2.8%	125	2.2%	-22.8%	-20.9%
Missing	0	N/A	0	N/A	2	N/A	2	N/A	4	N/A	N/A	N/A
Total	5,233		5,188		5,393		5,561		5,776		10.4%	3.9%

Graduate Students	Fall 2005		Fall 2006		Fall 2007		Fall 2008		Fall 2009		Pct. Change 05 to 09	Pct. Change 08 to 09
	No.	Pct.	No.	Pct.	No.	Pct.	No.	Pct.	No.	Pct.		
New Jersey	282	92.5%	286	92.0%	288	93.2%	271	94.8%	238	95.2%	-15.6%	-12.2%
New York	15	4.9%	19	6.1%	12	3.9%	8	2.8%	9	3.6%	-40.0%	12.5%
Other U.S. State/Terr.	2	0.7%	2	0.6%	3	1.0%	2	0.7%	1	0.4%	-50.0%	-50.0%
Foreign Country	6	2.0%	4	1.3%	6	1.9%	5	1.7%	2	0.8%	-66.7%	-60.0%
Missing	0	N/A	0	N/A	0	N/A	0	N/A	0	N/A	N/A	N/A
Total	305		311		309		286		250		-18.0%	-12.6%

All Students	Fall 2005		Fall 2006		Fall 2007		Fall 2008		Fall 2009		Pct. Change 05 to 09	Pct. Change 08 to 09
	No.	Pct.	No.	Pct.	No.	Pct.	No.	Pct.	No.	Pct.		
New Jersey	4,950	89.4%	4,972	90.4%	5,206	91.3%	5,361	91.7%	5,617	93.3%	13.5%	4.8%
New York	365	6.6%	313	5.7%	303	5.3%	273	4.7%	239	4.0%	-34.5%	-12.5%
Other U.S. State/Terr.	55	1.0%	44	0.8%	36	0.6%	48	0.8%	39	0.6%	-29.1%	-18.8%
Foreign Country	168	3.0%	170	3.1%	155	2.7%	163	2.8%	127	2.1%	-24.4%	-22.1%
Missing	0	N/A	0	N/A	2	N/A	2	N/A	4	N/A	N/A	N/A
Total	5,538		5,499		5,702		5,847		6,026		8.8%	3.1%



ENROLLMENT BY ETHNICITY AND CITIZENSHIP, FALL 2005 TO FALL 2009

Undergraduate Students	Fall 2005		Fall 2006		Fall 2007		Fall 2008		Fall 2009		Pct. Change 05 to 09	Pct. Change 08 to 09
	No.	Pct.	No.	Pct.	No.	Pct.	No.	Pct.	No.	Pct.		
American Indian/Nat. Al.	18	0.3%	16	0.3%	16	0.3%	16	0.3%	21	0.4%	16.7%	31.3%
Asian/Pacific Islander	219	4.2%	219	4.2%	229	4.2%	260	4.7%	277	4.9%	26.5%	6.5%
Black, non-Hispanic	326	6.2%	307	5.9%	314	5.8%	340	6.1%	304	5.4%	-6.7%	-10.6%
Hispanic	408	7.8%	419	8.1%	462	8.6%	477	8.6%	508	9.0%	24.5%	6.5%
White, non-Hispanic	4,104	78.4%	4,061	78.3%	4,223	78.3%	4,299	77.5%	4,397	78.1%	7.1%	2.3%
Nonresident Alien	158	3.0%	166	3.2%	149	2.8%	158	2.8%	125	2.2%	-20.9%	-20.9%
Missing	0	N/A	0	N/A	0	N/A	11	N/A	144	N/A	N/A	N/A
Total	5,233		5,188		5,393		5,561		5,776		10.4%	3.9%

Graduate Students	Fall 2005		Fall 2006		Fall 2007		Fall 2008		Fall 2009		Pct. Change 05 to 09	Pct. Change 08 to 09
	No.	Pct.	No.	Pct.	No.	Pct.	No.	Pct.	No.	Pct.		
American Indian/Nat. Al.	0	0.0%	0	0.0%	0	0.0%	0	0.0%	0	0.0%	N/A	N/A
Asian/Pacific Islander	8	2.6%	11	3.5%	6	1.9%	3	1.0%	6	2.4%	-25.0%	100.0%
Black, non-Hispanic	10	3.3%	18	5.8%	16	5.2%	10	3.5%	14	5.7%	40.0%	40.0%
Hispanic	7	2.3%	7	2.3%	11	3.6%	11	3.8%	9	3.6%	28.6%	-18.2%
White, non-Hispanic	276	90.5%	271	87.1%	270	87.4%	257	89.9%	216	87.4%	-21.7%	-16.0%
Nonresident Alien	4	1.3%	4	1.3%	6	1.9%	5	1.7%	2	0.8%	-50.0%	-60.0%
Missing	0	N/A	0	N/A	0	N/A	0	N/A	3	N/A	N/A	N/A
Total	305		311		309		286		250		-18.0%	-12.6%

All Students	Fall 2005		Fall 2006		Fall 2007		Fall 2008		Fall 2009		Pct. Change 05 to 09	Pct. Change 08 to 09
	No.	Pct.	No.	Pct.	No.	Pct.	No.	Pct.	No.	Pct.		
American Indian/Nat. Al.	18	0.3%	16	0.3%	16	0.3%	16	0.3%	21	0.4%	16.7%	31.3%
Asian/Pacific Islander	227	4.1%	230	4.2%	235	4.1%	263	4.5%	283	4.8%	24.7%	7.6%
Black, non-Hispanic	336	6.1%	325	5.9%	330	5.8%	350	6.0%	318	5.4%	-5.4%	-9.1%
Hispanic	415	7.5%	426	7.7%	473	8.3%	488	8.4%	517	8.8%	24.6%	5.9%
White, non-Hispanic	4,380	79.1%	4,332	78.8%	4,493	78.8%	4,556	78.1%	4,613	78.5%	5.3%	1.3%
Nonresident Alien	162	2.9%	170	3.1%	155	2.7%	163	2.8%	127	2.2%	-21.6%	-22.1%
Missing	0	N/A	0	N/A	0	N/A	11	N/A	147	N/A	N/A	N/A
Total	5,538		5,499		5,702		5,847		6,026		8.8%	3.1%

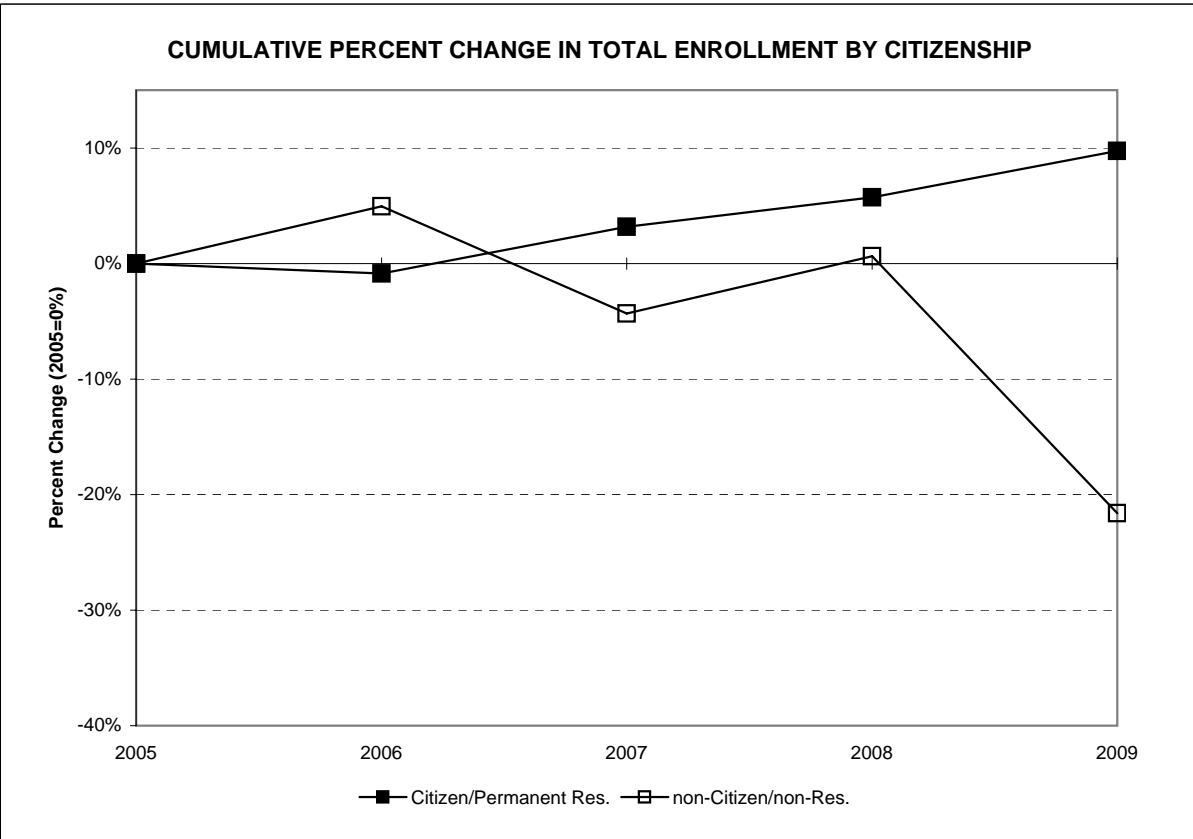
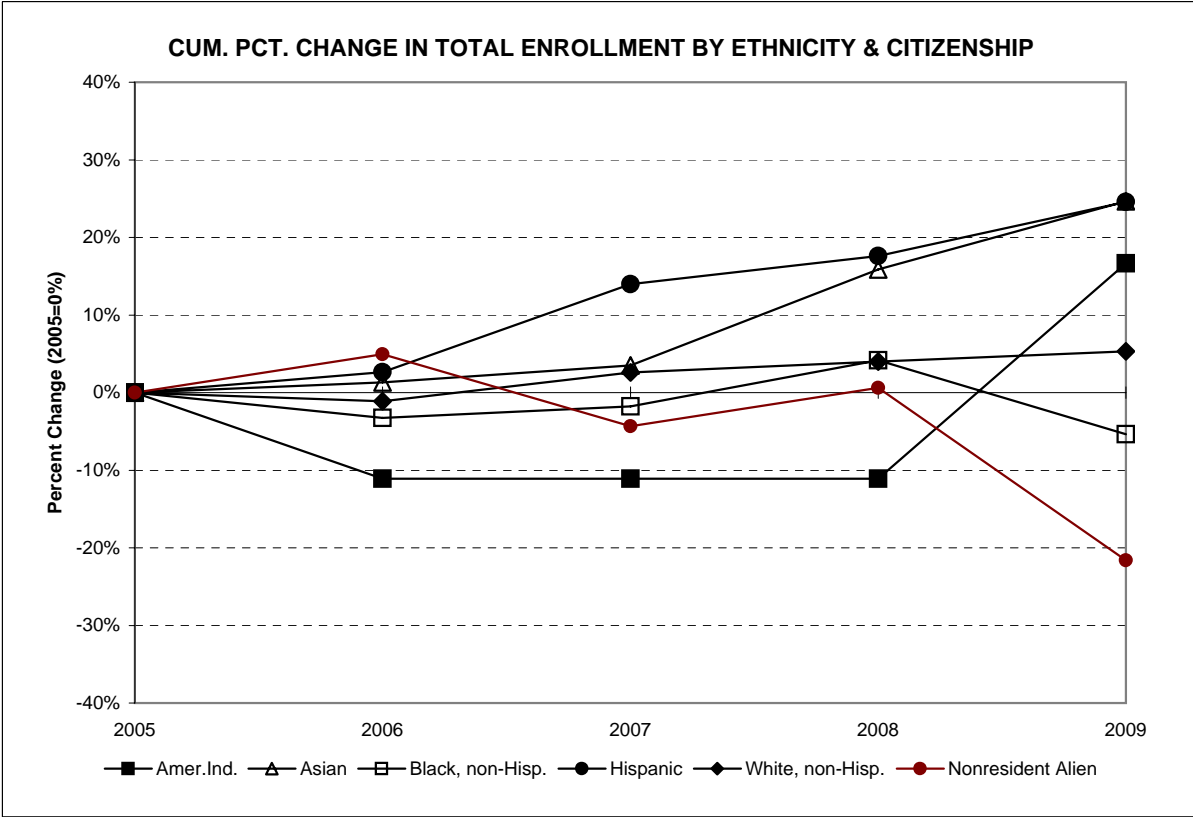


ENROLLMENT BY CITIZENSHIP, FALL 2005 TO FALL 2009

Undergraduate Students	Fall 2005		Fall 2006		Fall 2007		Fall 2008		Fall 2009		Pct. Change 05 to 09	Pct. Change 08 to 09
	No.	Pct.	No.	Pct.	No.	Pct.	No.	Pct.	No.	Pct.		
Citizen/Permanent Res.	5,075	97.0%	5,022	96.8%	5,244	97.2%	5,403	97.2%	5,651	97.8%	11.3%	4.6%
non-Citizen/non-Res.	158	3.0%	166	3.2%	149	2.8%	158	2.8%	125	2.2%	-20.9%	-20.9%
Total	5,233		5,188		5,393		5,561		5,776		10.4%	3.9%

Graduate Students	Fall 2005		Fall 2006		Fall 2007		Fall 2008		Fall 2009		Pct. Change 05 to 09	Pct. Change 08 to 09
	No.	Pct.	No.	Pct.	No.	Pct.	No.	Pct.	No.	Pct.		
Citizen/Permanent Res.	301	98.7%	307	98.7%	303	98.1%	281	98.3%	248	99.2%	-17.6%	-11.7%
non-Citizen/non-Res.	4	1.3%	4	1.3%	6	1.9%	5	1.7%	2	0.8%	-50.0%	-60.0%
Total	305		311		309		286		250		-18.0%	-12.6%

All Students	Fall 2005		Fall 2006		Fall 2007		Fall 2008		Fall 2009		Pct. Change 05 to 09	Pct. Change 08 to 09
	No.	Pct.	No.	Pct.	No.	Pct.	No.	Pct.	No.	Pct.		
Citizen/Permanent Res.	5,376	97.1%	5,329	96.9%	5,547	97.3%	5,684	97.2%	5,899	97.9%	9.7%	3.8%
non-Citizen/non-Res.	162	2.9%	170	3.1%	155	2.7%	163	2.8%	127	2.1%	-21.6%	-22.1%
Total	5,538		5,499		5,702		5,847		6,026		8.8%	3.1%



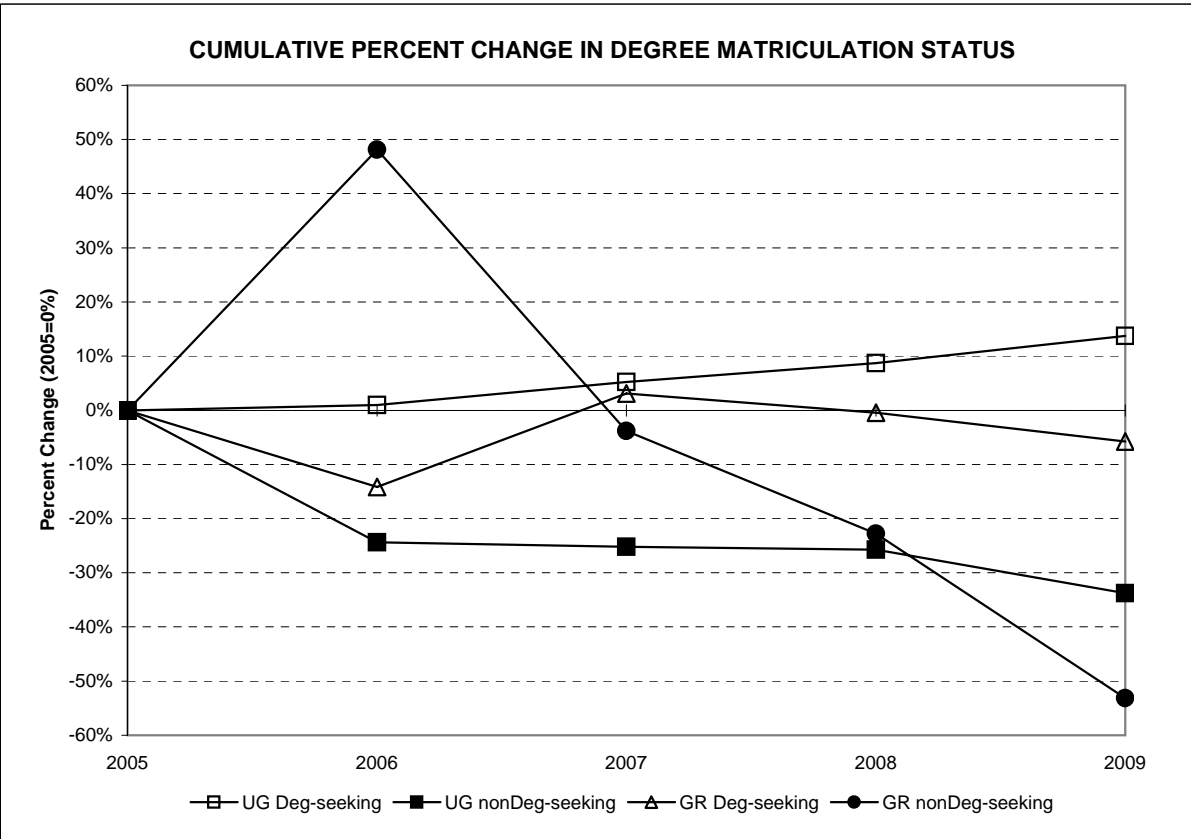
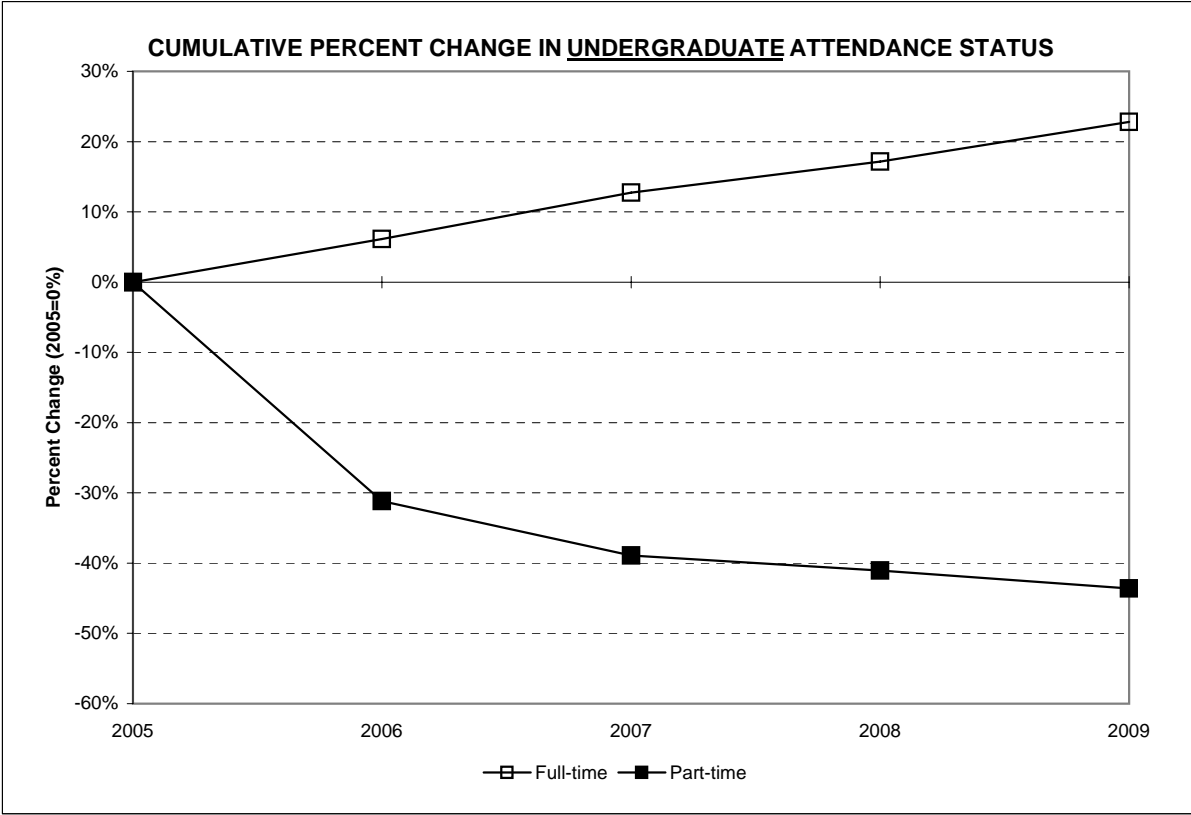
ENROLLMENT BY ATTENDANCE STATUS, FALL 2005 TO FALL 2009

	Fall 2005		Fall 2006		Fall 2007		Fall 2008		Fall 2009		Pct. Change 05 to 09	Pct. Change 08 to 09
	No.	Pct.	No.	Pct.	No.	Pct.	No.	Pct.	No.	Pct.		
Undergraduate Students												
Full-time	4,254	81.3%	4,514	87.0%	4,795	88.9%	4,984	89.6%	5,224	90.4%	22.8%	4.8%
Part-time	979	18.7%	674	13.0%	598	11.1%	577	10.4%	552	9.6%	-43.6%	-4.3%
Total	5,233		5,188		5,393		5,561		5,776		10.4%	3.9%
Graduate Students												
Full-time	13	4.3%	5	1.6%	6	1.9%	11	3.8%	6	2.4%	-53.8%	-45.5%
Part-time	292	95.7%	306	98.4%	303	98.1%	275	96.2%	244	97.6%	-16.4%	-11.3%
Total	305		311		309		286		250		-18.0%	-12.6%
All Students												
Full-time	4,267	77.0%	4,519	82.2%	4,801	84.2%	4,995	85.4%	5,230	86.8%	22.6%	4.7%
Part-time	1,271	23.0%	980	17.8%	901	15.8%	852	14.6%	796	13.2%	-37.4%	-6.6%
Total	5,538		5,499		5,702		5,847		6,026		8.8%	3.1%



ENROLLMENT BY MATRICULATION STATUS, FALL 2005 TO FALL 2009

	Fall 2005		Fall 2006		Fall 2007		Fall 2008		Fall 2009		Pct. Change 05 to 09	Pct. Change 08 to 09
	No.	Pct.	No.	Pct.	No.	Pct.	No.	Pct.	No.	Pct.		
Undergraduate Students												
Degree-seeking	4,860	92.9%	4,906	94.6%	5,114	94.8%	5,284	95.0%	5,529	95.7%	13.8%	4.6%
Nondegree-seeking	373	7.1%	282	5.4%	279	5.2%	277	5.0%	247	4.3%	-33.8%	-10.8%
Total	5,233		5,188		5,393		5,561		5,776		10.4%	3.9%
Graduate Students												
Degree-seeking	226	74.1%	194	62.4%	233	75.4%	225	78.7%	213	85.2%	-5.8%	-5.3%
Nondegree-seeking	79	25.9%	117	37.6%	76	24.6%	61	21.3%	37	14.8%	-53.2%	-39.3%
Total	305		311		309		286		250		-18.0%	-12.6%
All Students												
Degree-seeking	5,086	91.8%	5,100	92.7%	5,347	93.8%	5,509	94.2%	5,742	95.3%	12.9%	4.2%
Nondegree-seeking	452	8.2%	399	7.3%	355	6.2%	338	5.8%	284	4.7%	-37.2%	-16.0%
Total	5,538		5,499		5,702		5,847		6,026		8.8%	3.1%



ENROLLMENT BY VETERAN STATUS, FALL 2005 TO FALL 2009

All Students	Fall 2005		Fall 2006		Fall 2007		Fall 2008		Fall 2009		Pct. Change 05 to 09	Pct. Change 08 to 09
	No.	Pct.	No.	Pct.	No.	Pct.	No.	Pct.	No.	Pct.		
Veteran	29	0.5%	11	0.2%	24	0.4%	13	0.2%	53	0.9%	82.8%	307.7%
Depend of Dec'd. Vet.	1	0.0%	0	0.0%	0	0.0%	0	0.0%	0	0.0%	N/A	N/A
Non-Veteran	5,508	99.5%	5,488	99.8%	5,678	99.6%	5,834	99.8%	5,973	99.1%	8.4%	2.4%
Total	5,538		5,499		5,702		5,847		6,026		8.8%	3.1%

ENROLLMENT BY DISABILITY STATUS, FALL 2005 TO FALL 2009

All Students	Fall 2005		Fall 2006		Fall 2007		Fall 2008		Fall 2009		Pct. Change 05 to 09	Pct. Change 08 to 09
	No.	Pct.	No.	Pct.	No.	Pct.	No.	Pct.	No.	Pct.		
Disabled	184	3.3%	198	3.6%	231	4.1%	246	4.2%	265	4.4%	44.0%	7.7%
Not Disabled	5,354	96.7%	5,301	96.4%	5,471	95.9%	5,601	95.8%	5,761	95.6%	7.6%	2.9%
Missing	0	N/A	0	N/A	0	N/A	0	N/A	0	N/A	N/A	N/A
Total	5,538		5,499		5,702		5,847		6,026		8.8%	3.1%

UNDERGRADUATE ENROLLMENT BY CLASS RANK, FALL 2005 TO FALL 2009

Undergraduate Students: ^[1]	Fall 2005		Fall 2006		Fall 2007		Fall 2008		Fall 2009		Pct. Change 05 to 09	Pct. Change 08 to 09
	No.	Pct.	No.	Pct.	No.	Pct.	No.	Pct.	No.	Pct.		
Freshmen	1,014	20.9%	1,263	25.7%	1,369	26.8%	1,397	26.4%	1,450	26.2%	43.0%	3.8%
Sophomores	967	19.9%	1,137	23.2%	1,141	22.3%	1,203	22.8%	1,210	21.9%	25.1%	0.6%
Juniors	1,223	25.2%	1,351	27.5%	1,365	26.7%	1,449	27.4%	1,495	27.0%	22.2%	3.2%
Seniors	1,656	34.1%	1,155	23.5%	1,239	24.2%	1,235	23.4%	1,374	24.9%	-17.0%	11.3%
Unclassified/nonDeg.	373	N/A	282	N/A	279	N/A	277	N/A	247	N/A	N/A	N/A
Total	5,233		5,188		5,393		5,561		5,776		10.4%	3.9%

UNDERGRADUATE ENROLLMENT BY SPECIAL PROGRAM STATUS, FALL 2005 TO FALL 2009

Undergraduate Students	Fall 2005		Fall 2006		Fall 2007		Fall 2008		Fall 2009		Pct. Change 05 to 09	Pct. Change 08 to 09
	No.	Pct.	No.	Pct.	No.	Pct.	No.	Pct.	No.	Pct.		
EOF	293	5.6%	307	5.9%	302	5.6%	309	5.6%	343	5.9%	17.1%	11.0%
EOF Honor's Program	0	0.0%	0	0.0%	1	0.0%	1	0.0%	1	0.0%	N/A	0.0%
Honor's Program	50	1.0%	98	1.9%	146	2.7%	183	3.3%	171	3.0%	242.0%	-6.6%
No Spec. Prog. Desig.	4,890	93.4%	4,783	92.2%	4,944	91.7%	5,068	91.1%	5,261	91.1%	7.6%	3.8%
Total	5,233		5,188		5,393		5,561		5,776		10.4%	3.9%

	Fall 2005		Fall 2006 ^[1]		Fall 2007		Fall 2008		Fall 2009		Pct. Change	Pct. Change
	No.	Pct.	No.	Pct.	No.	Pct.	No.	Pct.	No.	Pct.	05 to 09	08 to 09
All Students	16	0.3%	14	0.3%	13	0.2%	12	0.2%	14	0.2%	-12.5%	16.7%
Atlantic	1,904	34.4%	1,846	33.6%	1,955	34.3%	2,063	35.3%	2,109	35.0%	10.8%	2.2%
Bergen	43	0.8%	46	0.8%	54	0.9%	60	1.0%	61	1.0%	41.9%	1.7%
Burlington	44	0.8%	50	0.9%	47	0.8%	45	0.8%	46	0.8%	4.5%	2.2%
Camden	9	0.2%	9	0.2%	12	0.2%	12	0.2%	11	0.2%	22.2%	-8.3%
Cape May	9	0.2%	11	0.2%	9	0.2%	7	0.1%	8	0.1%	-11.1%	14.3%
Cumberland	161	2.9%	184	3.3%	194	3.4%	207	3.5%	213	3.5%	32.3%	2.9%
Essex	35	0.6%	26	0.5%	29	0.5%	24	0.4%	20	0.3%	-42.9%	-16.7%
Gloucester	133	2.4%	132	2.4%	127	2.2%	141	2.4%	126	2.1%	-5.3%	-10.6%
Hudson	65	1.2%	54	1.0%	60	1.1%	54	0.9%	58	1.0%	-10.8%	7.4%
Hunterdon	43	0.8%	52	0.9%	42	0.7%	40	0.7%	46	0.8%	7.0%	15.0%
Mercer	418	7.5%	452	8.2%	429	7.5%	382	6.5%	379	6.3%	-9.3%	-0.8%
Middlesex	358	6.5%	390	7.1%	432	7.6%	444	7.6%	477	7.9%	33.2%	7.4%
Monmouth	302	5.5%	318	5.8%	344	6.0%	381	6.5%	416	6.9%	37.7%	9.2%
Morris	267	4.8%	252	4.6%	236	4.1%	233	4.0%	220	3.7%	-17.6%	-5.6%
Ocean	603	10.9%	585	10.6%	644	11.3%	682	11.7%	688	11.4%	14.1%	0.9%
Passaic	1	0.0%	2	0.0%	4	0.1%	2	0.0%	2	0.0%	100.0%	0.0%
Salem	99	1.8%	91	1.7%	96	1.7%	87	1.5%	88	1.5%	-11.1%	1.1%
Somerset	233	4.2%	256	4.7%	274	4.8%	278	4.8%	295	4.9%	26.6%	6.1%
Sussex	133	2.4%	130	2.4%	142	2.5%	146	2.5%	149	2.5%	12.0%	2.1%
Union	73	1.3%	71	1.3%	60	1.1%	60	1.0%	76	1.3%	4.1%	26.7%
Warren	60	1.1%	89	1.6%	91	1.6%	72	1.2%	70	1.2%	16.7%	-2.8%
Orange, NY	239	4.3%	174	3.2%	164	2.9%	162	2.8%	138	2.3%	-42.3%	-14.8%
Rockland, NY	7	0.1%	13	0.2%	7	0.1%	3	0.1%	0	0.0%	-100.0%	-100.0%
Westchester, NY	283	5.1%	252	4.6%	237	4.2%	250	4.3%	316	5.2%	11.7%	26.4%
Out of State/Other												
Total	5,538		5,499		5,702		5,847		6,026		8.8%	3.1%

[1] Fall 2006 distribution revised on 11/07.

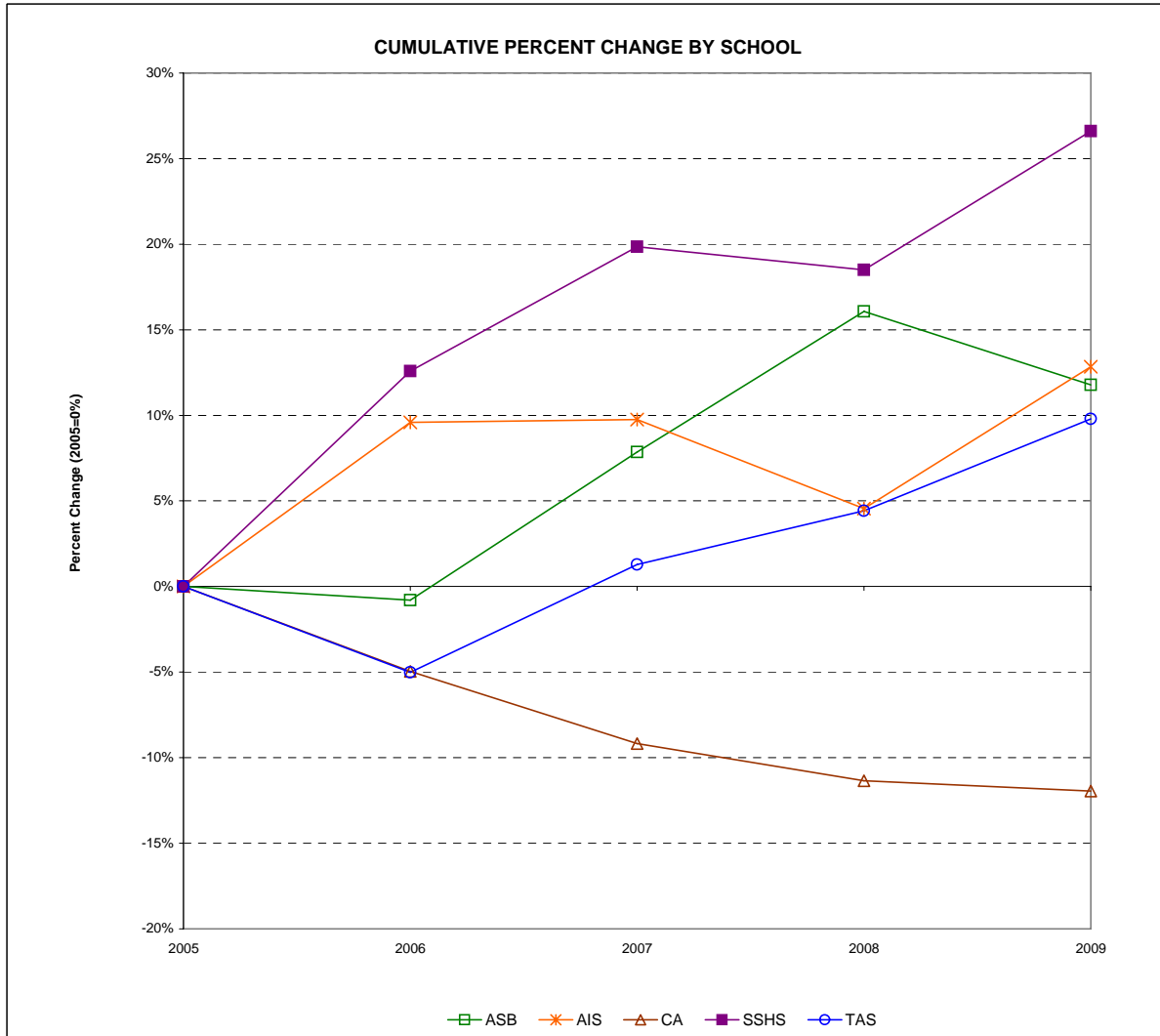
Non-Citizen Enrollment by Country of Origin, Fall 2005 to Fall 2009

Country	Fall 2005		Fall 2006		Fall 2007		Fall 2008		Fall 2009		Country	Fall 2005		Fall 2006		Fall 2007		Fall 2008		Fall 2009	
	No.	Pct.	No.	Pct.	No.	Pct.	No.	Pct.	No.	Pct.		No.	Pct.	No.	Pct.	No.	Pct.	No.	Pct.	No.	Pct.
Afghanistan					1	0.6%	1	0.6%	1	0.8%	Ivory Coast										
Albania	1	0.6%									Jamaica	3	1.9%	3	1.8%	3	1.9%	2	1.2%	2	1.6%
Argentina	2	1.2%	2	1.2%	1	0.6%	1	0.6%	1	0.8%	Japan	7	4.3%	8	4.7%	4	2.6%	1	0.6%	1	0.8%
Armenia					1	0.6%	1	0.6%			Kampuchea	1	0.6%								
Australia							2	1.2%			Kenya	3	1.9%	3	1.8%	5	3.2%	2	1.2%	2	1.6%
Austria					1	0.6%	2	1.2%	2	1.6%	Lebanon					1	0.6%	1	0.6%		
Bahamas	7	4.3%	6	3.5%	4	2.6%					Liberia										
Bahrain			2	1.2%	1	0.6%	1	0.6%			Lithuania										
Bangladesh			1	0.6%	1	0.6%	1	0.6%			(FYRO) Macedonia	1	0.6%			2	1.3%	2	1.2%	1	0.8%
Bolivia											Malaysia	2	1.2%					1	0.6%		
Bosnia-Herzegovinia											Mauritius	2	1.2%	1	0.6%	1	0.6%				
Brazil	6	3.7%	5	2.9%	3	1.9%	7	4.3%	7	5.5%	Mexico							1	0.6%		
British Virgin Islands											Moldova			1	0.6%						
Bulgaria	30	18.5%	38	22.4%	38	24.5%	33	20.2%	29	22.8%	Mongolia	2	1.2%	1	0.6%	1	0.6%	2	1.2%	2	1.6%
Burma											Morocco			1	0.6%	1	0.6%				
Cambodia			1	0.6%							Nepal	2	1.2%	1	0.6%					1	0.8%
Canada	2	1.2%	2	1.2%	1	0.6%	1	0.6%	1	0.8%	Netherlands			1	0.6%					1	0.8%
Taiwan (China, Nationalist)	1	0.6%					1	0.6%	1	0.8%	Nigeria	6	3.7%	4	2.4%	6	3.9%	8	4.9%	10	7.9%
China, People's Republic	1	0.6%	1	0.6%	2	1.3%	2	1.2%	2	1.6%	Norway							1	0.6%		
Colombia	1	0.6%	1	0.6%	1	0.6%	2	1.2%	2	1.6%	Oman							1	0.6%	1	0.8%
Costa Rica			1	0.6%			1	0.6%			Pakistan	5	3.1%	3	1.8%	3	1.9%	1	0.6%		
Croatia	2	1.2%	2	1.2%	2	1.3%	2	1.2%	1	0.8%	Panama	2	1.2%	1	0.6%			1	0.6%		
Cyprus											Peru	2	1.2%	2	1.2%	1	0.6%	1	0.6%	1	0.8%
Czech Republic									1	0.8%	Philippines	1	0.6%	2	1.2%	3	1.9%	4	2.5%	2	1.6%
Denmark	1	0.6%					1	0.6%			Poland	7	4.3%	9	5.3%	6	3.9%	4	2.5%	3	2.4%
Dominican Republic	1	0.6%									Portugal	1	0.6%								
Ecuador	1	0.6%	1	0.6%							Romania	2	1.2%	2	1.2%	2	1.3%	2	1.2%	1	0.8%
Egypt	1	0.6%			1	0.6%					Russia	3	1.9%	7	4.1%	4	2.6%	4	2.5%	3	2.4%
El Salvador			1	0.6%	1	0.6%	1	0.6%			Serbia-Montenegro							1	0.6%		
Estonia	1	0.6%	1	0.6%	1	0.6%					St. Vincent/Gren.			1	0.6%	1	0.6%	1	0.6%	1	0.8%
Ethiopia	1	0.6%	2	1.2%	1	0.6%	1	0.6%	1	0.8%	Slovak Republic	1	0.6%	1	0.6%	1	0.6%	1	0.6%	1	0.8%
Fiji											South Africa	1	0.6%	2	1.2%	1	0.6%	1	0.6%	2	1.6%
France	2	1.2%	2	1.2%	1	0.6%	3	1.8%			South Korea	6	3.7%	11	6.5%	10	6.5%	7	4.3%	4	3.1%
Germany	6	3.7%	11	6.5%	5	3.2%	22	13.5%	19	15.0%	Spain	1	0.6%	2	1.2%	1	0.6%	1	0.6%	1	0.8%
Ghana	2	1.2%									Sri Lanka	1	0.6%	1	0.6%	1	0.6%				
Guyana	1	0.6%									Sweden	2	1.2%	1	0.6%			4	2.5%	4	3.1%
Haiti					1	0.6%			1	0.8%	Switzerland	1	0.6%								
Hong Kong	1	0.6%									Tanzania	2	1.2%	1	0.6%	1	0.6%				
Hungary	2	1.2%			1	0.6%	1	0.6%	1	0.8%	Trinidad & Tobago	6	3.7%	7	4.1%	9	5.8%	5	3.1%	3	2.4%
Iceland											Turkey	1	0.6%			2		3	1.8%	1	0.8%
India	7	4.3%	4	2.4%	6	3.9%	6	3.7%	4	3.1%	Uganda	1	0.6%	1	0.6%						
Indonesia			1		1	0.6%	1	0.6%			Ukraine	1	0.6%	1	0.6%					1	0.8%
Iran					1	0.6%					United Kingdom										
Iraq			2		2	1.3%	2	1.2%	2	1.6%	Venezuela										
Israel	1	0.6%	2	1.2%	3	1.9%	3	1.8%	1	0.8%	Yugoslavia (Slovenia)	3	1.9%	2	1.2%	1	0.6%			1	0.8%
Italy	1	0.6%			2	1.3%	1	0.6%			Zambia	1	0.6%								
TOTAL											TOTAL	162		170		155		163		127	

TOTAL FALL 2009 ENROLLMENT = 6,026

MATRICULATED UNDERGRADUATE ENROLLMENT BY SCHOOL, FALL 2005 TO FALL 2009

Schools	Fall 2005		Fall 2006		Fall 2007		Fall 2008		Fall 2009		Percent Change 05 to 09	Percent Change 08 to 09
	No.	Pct.	No.	Pct.	No.	Pct.	No.	Pct.	No.	Pct.		
Anisfield School of Business	1,120	23.0%	1,111	22.6%	1,208	23.6%	1,300	24.6%	1,252	22.6%	11.8%	-3.7%
American & Int'l Studies	615	12.7%	674	13.7%	675	13.2%	643	12.2%	694	12.6%	12.8%	7.9%
Contemporary Arts	828	17.0%	787	16.0%	752	14.7%	734	13.9%	729	13.2%	-12.0%	-0.7%
Soc. Science & Human Services	962	19.8%	1,083	22.1%	1,153	22.5%	1,140	21.6%	1,218	22.0%	26.6%	6.8%
Theoretical & Applied Science	1,175	24.2%	1,116	22.7%	1,190	23.3%	1,227	23.2%	1,290	23.3%	9.8%	5.1%
School Undecided	160	3.3%	135	2.8%	136	2.7%	240	4.5%	346	6.3%	116.3%	44.2%
Total	4,860		4,906		5,114		5,284		5,529		13.8%	4.6%



TOTAL FALL 2009 ENROLLMENT = 6,026

MATRICULATED UNDERGRADUATE ENROLLMENT BY SCHOOL AND MAJOR, FALL 2005 TO FALL 2009

Majors	Fall 2005		Fall 2006		Fall 2007		Fall 2008		Fall 2009		Percent Change 05 to 09	Percent Change 08 to 09
	No.	Pct.	No.	Pct.	No.	Pct.	No.	Pct.	No.	Pct.		
ASB Accounting	232	4.8%	205	4.2%	204	4.0%	232	4.4%	262	4.7%	12.9%	12.9%
Business Administration	570	11.7%	575	11.7%	636	12.4%	752	14.2%	731	13.2%	28.2%	-2.8%
Economics	25	0.5%	32	0.7%	32	0.6%	28	0.5%	31	0.6%	24.0%	10.7%
Information Systems	92	1.9%	74	1.5%	73	1.4%	59	1.1%	59	1.1%	-35.9%	0.0%
International Business	63	1.3%	70	1.4%	71	1.4%	67	1.3%	59	1.1%	-6.3%	-11.9%
Undecided Major	138	2.8%	155	3.2%	192	3.8%	162	3.1%	110	2.0%	-20.3%	-32.1%
AIS American Studies	24	0.5%	33	0.7%	30	0.6%	31	0.6%	31	0.6%	29.2%	0.0%
History	152	3.1%	237	4.8%	233	4.6%	233	4.4%	238	4.3%	56.6%	2.1%
International Studies	44	0.9%	53	1.1%	59	1.2%	55	1.0%	65	1.2%	47.7%	18.2%
Law and Society	46	0.9%	1	0.0%	-	-	-	-	-	-	N/A	N/A
Liberal Studies	-	-	-	-	-	-	7	0.1%	18	0.3%	N/A	157.1%
Literature	205	4.2%	218	4.4%	208	4.1%	199	3.8%	216	3.9%	5.4%	8.5%
Political Science	90	1.9%	72	1.5%	77	1.5%	59	1.1%	75	1.4%	-16.7%	27.1%
Spanish	18	0.4%	24	0.5%	22	0.4%	24	0.5%	32	0.6%	77.8%	33.3%
Undecided Major	36	0.7%	36	0.7%	46	0.9%	35	0.7%	19	0.3%	-47.2%	-45.7%
CA Communication Arts	485	10.0%	443	9.0%	391	7.6%	404	7.6%	440	8.0%	-9.3%	8.9%
Contemporary Arts	67	1.4%	86	1.8%	66	1.3%	61	1.2%	57	1.0%	-14.9%	-6.6%
Music	47	1.0%	62	1.3%	71	1.4%	70	1.3%	72	1.3%	53.2%	2.9%
Theater	52	1.1%	41	0.8%	54	1.1%	50	0.9%	45	0.8%	-13.5%	-10.0%
Visual Arts	109	2.2%	111	2.3%	122	2.4%	117	2.2%	89	1.6%	-18.3%	-23.9%
Undecided Major	68	1.4%	44	0.9%	48	0.9%	32	0.6%	26	0.5%	-61.8%	-18.8%
SSHS Economics ^[1]	3	0.1%	-	-	-	-	-	-	-	-	N/A	N/A
Environmental Studies	10	0.2%	40	0.8%	40	0.8%	42	0.8%	62	1.1%	520.0%	47.6%
History ^[1]	48	1.0%	-	-	-	-	-	-	-	-	N/A	N/A
Law and Society	166	3.4%	213	4.3%	192	3.8%	174	3.3%	183	3.3%	10.2%	5.2%
Political Science	0	0.0%	-	-	-	-	-	-	-	-	N/A	N/A
Psychology	413	8.5%	532	10.8%	584	11.4%	604	11.4%	657	11.9%	59.1%	8.8%
Social Science	25	0.5%	19	0.4%	24	0.5%	44	0.8%	49	0.9%	96.0%	11.4%
Social Work	114	2.3%	113	2.3%	119	2.3%	129	2.4%	127	2.3%	11.4%	-1.6%
Sociology	62	1.3%	51	1.0%	58	1.1%	52	1.0%	78	1.4%	25.8%	50.0%
Undecided Major	121	2.5%	115	2.3%	136	2.7%	95	1.8%	62	1.1%	-48.8%	-34.7%
TAS Allied Health	16	0.3%	10	0.2%	14	0.3%	18	0.3%	17	0.3%	6.3%	-5.6%
Biochemistry	25	0.5%	43	0.9%	43	0.8%	53	1.0%	47	0.9%	88.0%	-11.3%
Bioinformatics	20	0.4%	19	0.4%	12	0.2%	11	0.2%	8	0.1%	-60.0%	-27.3%
Biology	255	5.2%	290	5.9%	340	6.6%	367	6.9%	407	7.4%	59.6%	10.9%
Chemistry	21	0.4%	24	0.5%	19	0.4%	29	0.5%	31	0.6%	47.6%	6.9%
Clinical Lab Sciences	8	0.2%	11	0.2%	9	0.2%	11	0.2%	12	0.2%	50.0%	9.1%
Computer Science	90	1.9%	76	1.5%	67	1.3%	73	1.4%	63	1.1%	-30.0%	-13.7%
Environmental Science	24	0.5%	28	0.6%	42	0.8%	43	0.8%	44	0.8%	83.3%	2.3%
Environmental Studies ^[1]	33	0.7%	-	-	-	-	-	-	-	-	N/A	N/A
Integrated Science	9	0.2%	13	0.3%	12	0.2%	4	0.1%	5	0.1%	-44.4%	25.0%
Mathematics	100	2.1%	112	2.3%	110	2.2%	113	2.1%	124	2.2%	24.0%	9.7%
Nursing	367	7.6%	388	7.9%	407	8.0%	421	8.0%	438	7.9%	19.3%	4.0%
Engineering Physics/ Physics	24	0.5%	14	0.3%	18	0.4%	27	0.5%	30	0.5%	25.0%	11.1%
Psychology ^[1]	110	2.3%	-	-	-	-	-	-	-	-	N/A	N/A
Undecided Major	73	1.5%	88	1.8%	97	1.9%	57	1.1%	64	1.2%	-12.3%	12.3%
School & Major Undecided	160	3.3%	135	2.8%	136	2.7%	240	4.5%	346	6.3%	116.3%	44.2%
Total	4,860		4,906		5,114		5,284		5,529		13.8%	4.6%

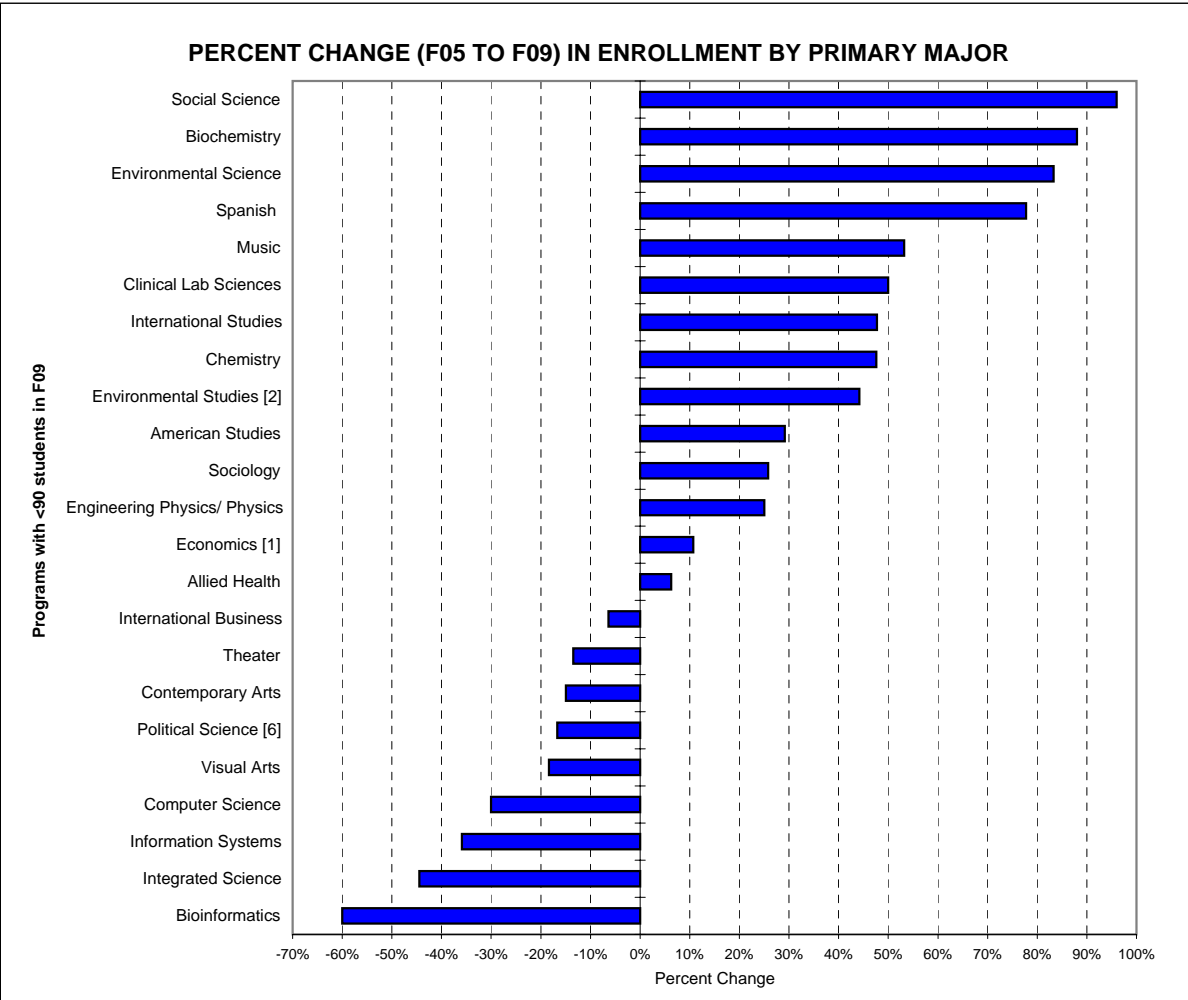
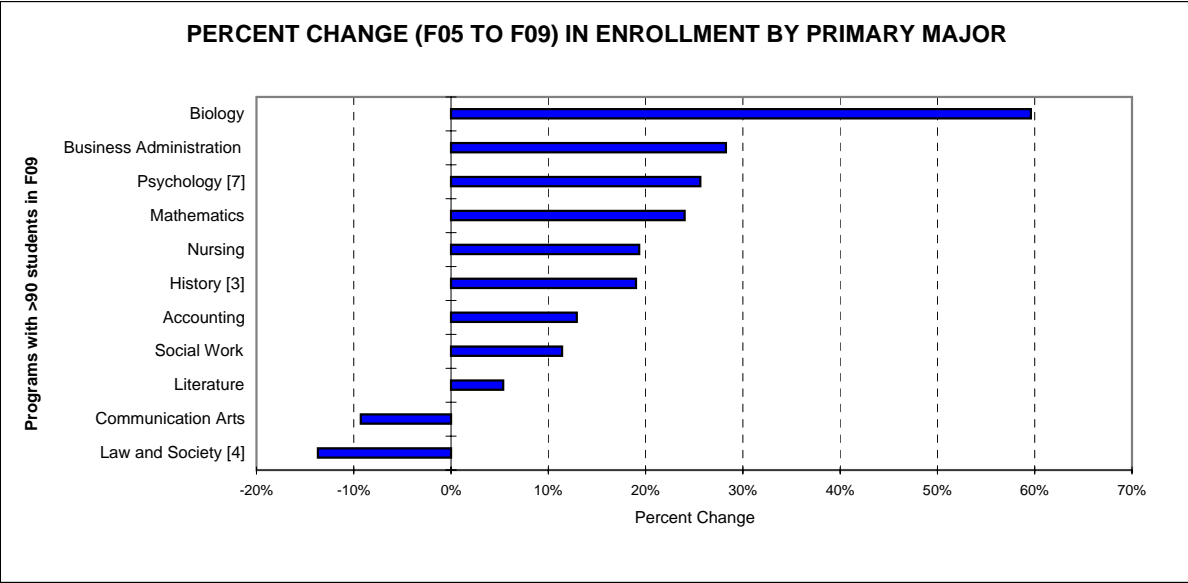
[1] The domicile of certain majors changed in Fall 2006. Economics is now exclusive to ASB. Law & Society is now exclusive to SSHS. Political Science and History are now majors exclusive to AIS. Environmental Studies and Psychology are now majors exclusive to SSHS.

TOTAL FALL 2009 ENROLLMENT = 6,026

MATRICULATED UNDERGRADUATE ENROLLMENT BY MAJOR, FALL 2005 TO FALL 2009

Majors	Fall 2005		Fall 2006		Fall 2007		Fall 2008		Fall 2009		Percent Change 05 to 09	Percent Change 08 to 09
	No.	Pct.	No.	Pct.	No.	Pct.	No.	Pct.	No.	Pct.		
Accounting	232	5.7%	205	4.9%	204	4.8%	232	5.2%	262	5.5%	12.9%	12.9%
Allied Health	16	0.4%	10	0.2%	14	0.3%	18	0.4%	17	0.4%	6.3%	-5.6%
American Studies	24	0.6%	33	0.8%	30	0.7%	31	0.7%	31	0.7%	29.2%	0.0%
Biochemistry	25	0.6%	43	1.0%	43	1.0%	53	1.2%	47	1.0%	88.0%	-11.3%
Bioinformatics	20	0.5%	19	0.5%	12	0.3%	11	0.2%	8	0.2%	-60.0%	-27.3%
Biology	255	6.2%	290	7.0%	340	8.0%	367	8.2%	407	8.6%	59.6%	10.9%
Business Administration	570	14.0%	575	13.8%	636	14.9%	752	16.8%	731	15.4%	28.2%	-2.8%
Chemistry	21	0.5%	24	0.6%	19	0.4%	29	0.6%	31	0.7%	47.6%	6.9%
Clinical Lab Sciences	8	0.2%	11	0.3%	9	0.2%	11	0.2%	12	0.3%	50.0%	9.1%
Communication Arts	485	11.9%	443	10.7%	391	9.2%	404	9.0%	440	9.3%	-9.3%	8.9%
Computer Science	90	2.2%	76	1.8%	67	1.6%	73	1.6%	63	1.3%	-30.0%	-13.7%
Contemporary Arts	67	1.6%	86	2.1%	66	1.5%	61	1.4%	57	1.2%	-14.9%	-6.6%
Economics [1]	28	0.7%	32	0.8%	32	0.8%	28	0.6%	31	0.7%	10.7%	10.7%
Engineering Physics/ Physics	24	0.6%	14	0.3%	18	0.4%	27	0.6%	30	0.6%	25.0%	11.1%
Environmental Science	24	0.6%	28	0.7%	42	1.0%	43	1.0%	44	0.9%	83.3%	2.3%
Environmental Studies [2]	43	1.1%	40	1.0%	40	0.9%	42	0.9%	62	1.3%	44.2%	47.6%
History [3]	200	4.9%	237	5.7%	233	5.5%	233	5.2%	238	5.0%	19.0%	2.1%
Information Systems	92	2.3%	74	1.8%	73	1.7%	59	1.3%	59	1.2%	-35.9%	0.0%
Integrated Science	9	0.2%	13	0.3%	12	0.3%	4	0.1%	5	0.1%	-44.4%	25.0%
International Business	63	1.5%	70	1.7%	71	1.7%	67	1.5%	59	1.2%	-6.3%	-11.9%
International Studies	44	1.1%	53	1.3%	59	1.4%	55	1.2%	65	1.4%	47.7%	18.2%
Law and Society [4]	212	5.2%	214	5.1%	192	4.5%	174	3.9%	183	3.9%	-13.7%	5.2%
Liberal Studies [5]	--	--	--	--	--	--	7	0.2%	18	0.4%	N/A	157.1%
Literature	205	5.0%	218	5.2%	208	4.9%	199	4.4%	216	4.6%	5.4%	8.5%
Mathematics	100	2.4%	112	2.7%	110	2.6%	113	2.5%	124	2.6%	24.0%	9.7%
Music	47	1.2%	62	1.5%	71	1.7%	70	1.6%	72	1.5%	53.2%	2.9%
Nursing	367	9.0%	388	9.3%	407	9.6%	421	9.4%	438	9.2%	19.3%	4.0%
Political Science [6]	90	2.2%	72	1.7%	77	1.8%	59	1.3%	75	1.6%	-16.7%	27.1%
Psychology [7]	523	12.8%	532	12.8%	584	13.7%	604	13.5%	657	13.9%	25.6%	8.8%
Social Science	25	0.6%	19	0.5%	24	0.6%	44	1.0%	49	1.0%	96.0%	11.4%
Social Work	114	2.8%	113	2.7%	119	2.8%	129	2.9%	127	2.7%	11.4%	-1.6%
Sociology	62	1.5%	51	1.2%	58	1.4%	52	1.2%	78	1.6%	25.8%	50.0%
Spanish	18	0.4%	24	0.6%	22	0.5%	24	0.5%	32	0.7%	77.8%	33.3%
Theater	52	1.3%	41	1.0%	54	1.3%	50	1.1%	45	1.0%	-13.5%	-10.0%
Visual Arts	109	2.7%	111	2.7%	122	2.9%	117	2.6%	89	1.9%	-18.3%	-23.9%
Undecided Major	596	N/A	573	N/A	655	N/A	621	N/A	627	N/A	N/A	N/A
Total	4,860		4,906		5,114		5,284		5,529		13.8%	4.6%

[1] Prior to fall 2006, includes students from SB and SSHS. [4] Prior to fall 2006, includes students from AIS and SSHS.
 [2] Prior to fall 2006, includes students from SSHS and TAS. [5] The Liberal Studies major was added in Fall 2008.
 [3] Prior to fall 2006, includes students from AIS and SSHS. [6] Prior to fall 2006, includes students from AIS and SSHS.



TOTAL FALL 2009 ENROLLMENT = 6,026

Primary Major and Concentration	Fall 2005		Fall 2006		Fall 2007		Fall 2008		Fall 2009		Percent Change 05 to 09	Percent Change 08 to 09
	No.	% of Maj	No.	% of Maj	No.	% of Maj	No.	% of Maj	No.	% of Maj		
Allied Health												
Diagnostic Medical Sonography	--	0.0%	--	0.0%	--	0.0%	2	0.5%	3	0.7%	N/A	50.0%
Nuclear Medicine Technology	--	0.0%	--	0.0%	--	0.0%	1	0.3%	1	0.2%	N/A	0.0%
Respiratory Care	--	--	--	0.0%	--	0.0%	1	0.3%	1	0.2%	N/A	0.0%
Unspecified	16	--	10	3.4%	14	4.1%	14	3.8%	12	2.9%	-25.0%	-14.3%
Subtotal	16		10		14		18		17		6.3%	-5.6%
Biology												
Physician's Assistant	10	3.9%	11	3.8%	15	4.4%	20	5.4%	20	4.9%	100.0%	0.0%
Physical Therapy	38	14.9%	52	17.9%	49	14.4%	58	15.8%	52	12.8%	36.8%	-10.3%
Chiropractic	--	--	1	0.3%	3	0.9%	3	0.8%	3	0.7%	N/A	0.0%
Dental	--	--	6	2.1%	14	4.1%	22	6.0%	24	5.9%	N/A	9.1%
Optometry	--	--	1	0.3%	3	0.9%	5	1.4%	4	1.0%	N/A	-20.0%
Podiatry	--	--	--	--	--	--	--	--	2	0.5%	N/A	N/A
Unspecified	207	81.2%	219	75.5%	256	75.3%	259	70.6%	302	74.2%	45.9%	16.6%
Subtotal	255		290		340		367		407		59.6%	10.9%
Business Administration												
Finance	117	45.9%	137	47.2%	152	44.7%	170	46.3%	166	40.8%	41.9%	-2.4%
Management	237	92.9%	240	82.8%	237	69.7%	245	66.8%	220	54.1%	-7.2%	-10.2%
Marketing	154	60.4%	168	57.9%	206	60.6%	226	61.6%	208	51.1%	35.1%	-8.0%
Unspecified	62	24.3%	30	10.3%	41	12.1%	111	30.2%	137	33.7%	121.0%	23.4%
Subtotal	570		575		636		752		731		28.2%	-2.8%
Clinical Lab Science												
Cytotechnology	--	--	--	0.0%	--	0.0%	2	0.5%	2	0.5%	N/A	0.0%
Medical Lab Science	--	--	--	0.0%	--	0.0%	--	0.0%	1	0.2%	N/A	N/A
Unspecified	8	3.1%	11	3.8%	9	2.6%	9	2.5%	9	2.2%	12.5%	0.0%
Subtotal	8		11		9		11		12		50.0%	9.1%
Communication Arts												
Creative Writing	1	0.2%	33	7.4%	39	10.0%	38	9.4%	41	9.3%	4000.0%	7.9%
Design & Interactive Media	--	--	53	12.0%	58	14.8%	80	19.8%	98	22.3%	N/A	22.5%
Digital Filmmaking	--	--	66	14.9%	46	11.8%	56	13.9%	62	14.1%	N/A	10.7%
Graphic Design	7	1.4%	3	0.7%	--	--	--	--	--	--	N/A	N/A
Interdisciplinary	1	0.2%	1	0.2%	--	--	--	--	--	--	N/A	N/A
Journalism	6	1.2%	59	13.3%	60	15.3%	69	17.1%	79	18.0%	1216.7%	14.5%
Media & Cinema Studies	--	--	102	23.0%	76	19.4%	82	20.3%	82	18.6%	N/A	0.0%
Public Communication	6	1.2%	--	--	--	--	--	--	--	--	N/A	N/A
Radio	2	0.4%	--	--	--	--	--	--	--	--	N/A	N/A
TV/Video Production	11	2.3%	--	--	--	--	--	--	--	--	N/A	N/A
Unspecified	451	93.0%	126	28.4%	112	28.6%	79	19.6%	78	17.7%	-82.7%	-1.3%
Subtotal	485		443		391		404		440		-9.3%	8.9%
Music [2]												
Music Industry	--	--	11	2.8%	16	22.5%	16	22.9%	25	34.7%	N/A	56.3%
Music Production	--	--	6	1.5%	9	12.7%	15	21.4%	14	19.4%	N/A	-6.7%
Music Performance	--	--	8	2.1%	3	4.2%	7	10.0%	11	15.3%	N/A	57.1%
Music Studies	--	--	8	2.1%	3	4.2%	2	2.9%	1	1.4%	N/A	-50.0%
Unspecified	--	--	29	7.5%	40	56.3%	30	42.9%	21	29.2%	N/A	-30.0%
Subtotal	--	--	62		71		70		72		N/A	2.9%
Nursing												
RN/BSN	90	24.5%	97	25.0%	76	18.7%	89	21.1%	62	14.2%	-31.1%	-30.3%
Generic BSN	277	75.5%	291	75.0%	331	81.3%	332	78.9%	376	85.8%	35.7%	13.3%
Subtotal	367		388		407		421		438		19.3%	4.0%
Social Science												
Africana Studies	1	4.0%	2	10.0%	1	4.2%	--	0.0%	--	0.0%	-100.0%	N/A
Community Mental Health	6	24.0%	4	20.0%	4	16.7%	4	9.1%	13	26.5%	116.7%	225.0%
Criminology [1]	1	4.0%	--	--	--	--	--	--	1	2.0%	N/A	N/A
Cultural Studies	1	4.0%	2	10.0%	2	8.3%	--	0.0%	--	0.0%	N/A	N/A
Ethnic Relations	--	0.0%	1	5.0%	--	0.0%	--	0.0%	--	0.0%	N/A	N/A
Gender Studies	2	8.0%	1	5.0%	1	4.2%	--	0.0%	--	0.0%	N/A	N/A
Unspecified	14	56.0%	10	50.0%	16	66.7%	40	90.9%	35	71.4%	150.0%	-12.5%
Subtotal	25		20		24		44		49		96.0%	11.4%
Theater [2]												
Acting	--	--	16	39.0%	20	37.0%	23	46.0%	16	35.6%	N/A	-30.4%
Design/Technical Theater	--	--	3	7.3%	2	3.7%	3	6.0%	6	13.3%	N/A	100.0%
Directing/Stage Mgmt.	--	--	3	7.3%	3	5.6%	3	6.0%	4	8.9%	N/A	33.3%
Theater Studies	--	--	--	--	1	1.9%	1	2.0%	4	8.9%	N/A	300.0%
Unspecified	--	--	19	46.3%	28	51.9%	20	40.0%	15	33.3%	N/A	-25.0%
Subtotal	--	--	41		54		50		45		N/A	-10.0%
Visual Arts [2]												
Art History	--	--	5	4.5%	5	4.1%	4	3.4%	4	4.5%	N/A	0.0%
Drawing and Painting	--	--	30	27.0%	25	20.5%	27	23.1%	17	19.1%	N/A	-37.0%
New Media	--	--	4	3.6%	1	0.8%	2	1.7%	4	4.5%	N/A	100.0%
Photography	--	--	8	7.2%	6	4.9%	12	10.3%	7	7.9%	N/A	-41.7%
Sculpture	--	--	5	4.5%	3	2.5%	2	1.7%	1	1.1%	N/A	-50.0%
Unspecified	--	--	59	53.2%	82	67.2%	70	59.8%	56	62.9%	N/A	-20.0%
Subtotal	--	--	111		122		117		89		N/A	-23.9%

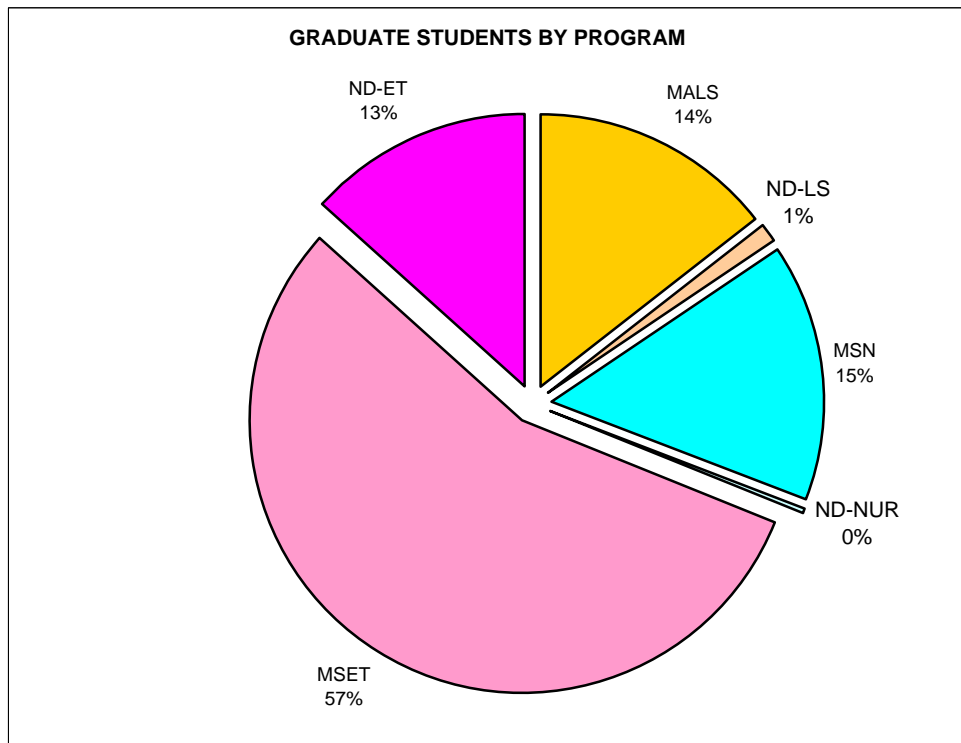
The domicile of certain majors changed in Fall 2006.

[1] The Criminology program is now offered in the major Law and Society (a new major as of fall 2006).

[2] Fine Art concentrations previously included in this table are now majors (Music, Theater, and Visual Arts).

GRADUATE STUDENT ENROLLMENTS BY PROGRAM

Business Administration	0	0.0%
Educational Technology	139	55.6%
Non-degree-seeking: Educational Technology	33	13.2%
Liberal Studies	36	14.4%
Non-degree-seeking: Liberal Studies	3	1.2%
Nursing	38	15.2%
Non-degree-seeking: Nursing	<u>1</u>	0.4%
	250	



GRADUATE ENROLLMENT BY PROGRAM, FALL 2005 TO FALL 2009

Program	Fall 2005		Fall 2006		Fall 2007		Fall 2008		Fall 2009		Percent Change 05 to 09	Percent Change 08 to 09
	No.	Pct.	No.	Pct.	No.	Pct.	No.	Pct.	No.	Pct.		
Liberal Studies	37	12.1%	33	10.6%	31	10.0%	38	13.3%	36	14.4%	-2.7%	-5.3%
Educational Technology	115	37.7%	107	34.4%	150	48.5%	141	49.3%	139	55.6%	20.9%	-1.4%
Business Administration ^[1]	31	10.2%	10	3.2%	7	2.3%	7	2.4%	--	0.0%	N/A	-100.0%
Nursing	43	14.1%	44	14.1%	45	14.6%	39	13.6%	38	15.2%	-11.6%	-2.6%
Non-degree-seeking	79	25.9%	117	37.6%	76	24.6%	61	21.3%	37	14.8%	-53.2%	-39.3%
Total	305		311		309		286		250		-18.0%	-12.6%



GRADUATE NONDEGREE-SEEKING STUDENTS BY AFFILIATION, FALL 2005 TO FALL 2009

Program	Fall 2005		Fall 2006		Fall 2007		Fall 2008		Fall 2009		Percent Change 05 to 09	Percent Change 08 to 09
	No.	Pct.	No.	Pct.	No.	Pct.	No.	Pct.	No.	Pct.		
Nondegree-seeking - Liberal Studies	6	7.6%	1	0.9%	5	6.6%	5	8.2%	3	8.1%	-50.0%	-40.0%
Nondegree-seeking - Educational Technology	70	88.6%	116	99.1%	69	90.8%	55	90.2%	33	89.2%	-52.9%	-40.0%
Nondegree-seeking - MBA ^[1]	3	3.8%	0	0.0%	0	0.0%	0	0.0%	--	0.0%	N/A	N/A
Nondegree-seeking - Nursing	0	0.0%	0	0.0%	2	2.6%	1	1.6%	1	2.7%	N/A	0.0%
Nondegree-seeking - Affiliation Unspecified	0	0.0%	0	0.0%		0.0%	0	0.0%	0	0.0%	N/A	N/A
Total	79		117		76		61		37		-53.2%	-39.3%

ACADEMIC YEAR HEADCOUNT ENROLLMENT, 2004-05 TO 2008-09

Semester/Session	2004-05	2005-06	2006-07	2007-08	2008-09	Percent Change 04/05 to 08/09	Percent Change 07/08 to 08/09
	No.	No.	No.	No.	No.		
Fall	5,617	5,538	5,499	5,702	5,847	4.1%	2.5%
Spring	5,403	5,281	5,247	5,435	5,625	4.1%	3.5%
<i>Annualized</i> ^[1]	5,510	5,410	5,373	5,569	5,736	4.1%	3.0%
Summer ^[2]	1,789	1,752	1,634	1,506	1,682	-6.0%	11.7%
Winter ^[3]	651	614	N/A	N/A	193	-70.4%	N/A
<i>Unduplicated Total</i> ^[4]	6,809	6,671	6,675	6,720 ^[5]	6,883 ^[5]	1.1%	2.4%

[1] Calculated by summing the Fall and Spring enrollments and dividing by 2.

This is an unduplicated count of the total number of individuals who took at least one course at the College during the academic year.

[2] Counts are from the summer prior to the academic year so that the 2008-09 academic year covers Summer 2008, Fall 2008, Winter 2009, and Spring 2009.

[3] The last winter semester of courses held on campus was W06. There were no W07 nor W08 courses. In W09, students enrolled in online courses.

[4] This is an unduplicated count of the total number of individuals who took at least one UG +/- or GR course at the college during the academic year.

[5] Unduplicated headcount revised on 9/14/10.



ACADEMIC YEAR FTE'S HEADCOUNT ENROLLMENT, 2004-05 TO 2008-09

Semester/Session	2004-05	2005-06	2006-07	2007-08	2008-09	Percent Change 04/05 to 08/09	Percent Change 07/08 to 08/09
	No.	No.	No.	No.	No.		
Fall	4,679	4,733	4,886	5,043	5,197	25.0%	15.9%
Spring	4,403	4,390	4,545	4,801	4,997	27.8%	17.2%
<i>Annualized</i> ^[1]	4,541	4,562	4,716	4,922	5,097	12.2%	3.6%
Summer ^[2]	298	288	271	298	322	8.1%	8.1%
Winter ^[3]	75	73	N/A	N/A	24	N/A	N/A

[1] Calculated by summing the Fall and Spring enrollments and dividing by 2.

This is an unduplicated count of the total number of individuals who took at least one course at the College during the academic year.

[2] Counts are from the summer prior to the academic year; for instance, the 2008-09 academic year covers Summer 2008, Fall 2008, Winter 2009, and Spring 2009.

[3] The last winter semester of courses held on campus was W06. There were no W07 nor W08 courses. In W09, students enrolled in online courses.