

SECTION VI:

STUDENT SERVICES

2008 INSTITUTIONAL PROFILE

CAHILL CENTER ^[1]

COOPERATIVE EDUCATION

	03/04	04/05	05/06	06/07	07/08	Percent Change 03/04 to 07/08	Percent Change 06/07 to 07/08
Number of Employers	263	249	277	256	268	1.9%	4.7%
Number of Students:							
Female	196	198	216	157	167	-14.8%	6.4%
Male	<u>163</u>	<u>129</u>	<u>132</u>	<u>148</u>	<u>124</u>	<u>-23.9%</u>	<u>-16.2%</u>
Total Students	359	327	348	305	291	-18.9%	-4.6%
Dollars Earned	\$1,115,347	\$1,105,414	\$1,051,361	\$806,095	\$783,711	-29.7%	-2.8%
Credits Earned	1,365	1,218	1,413	1,250	1,164	-14.7%	-6.9%

CAREER SERVICES

	03/04	04/05	05/06	06/07	07/08	Percent Change 03/04 to 07/08	Percent Change 06/07 to 07/08
Course Participants	151	133	143	160	172	13.9%	7.5%
Job Fair Participants	1200	900	600	600	550	-54.2%	-8.3%

STUDENT ASSISTANT PROGRAM

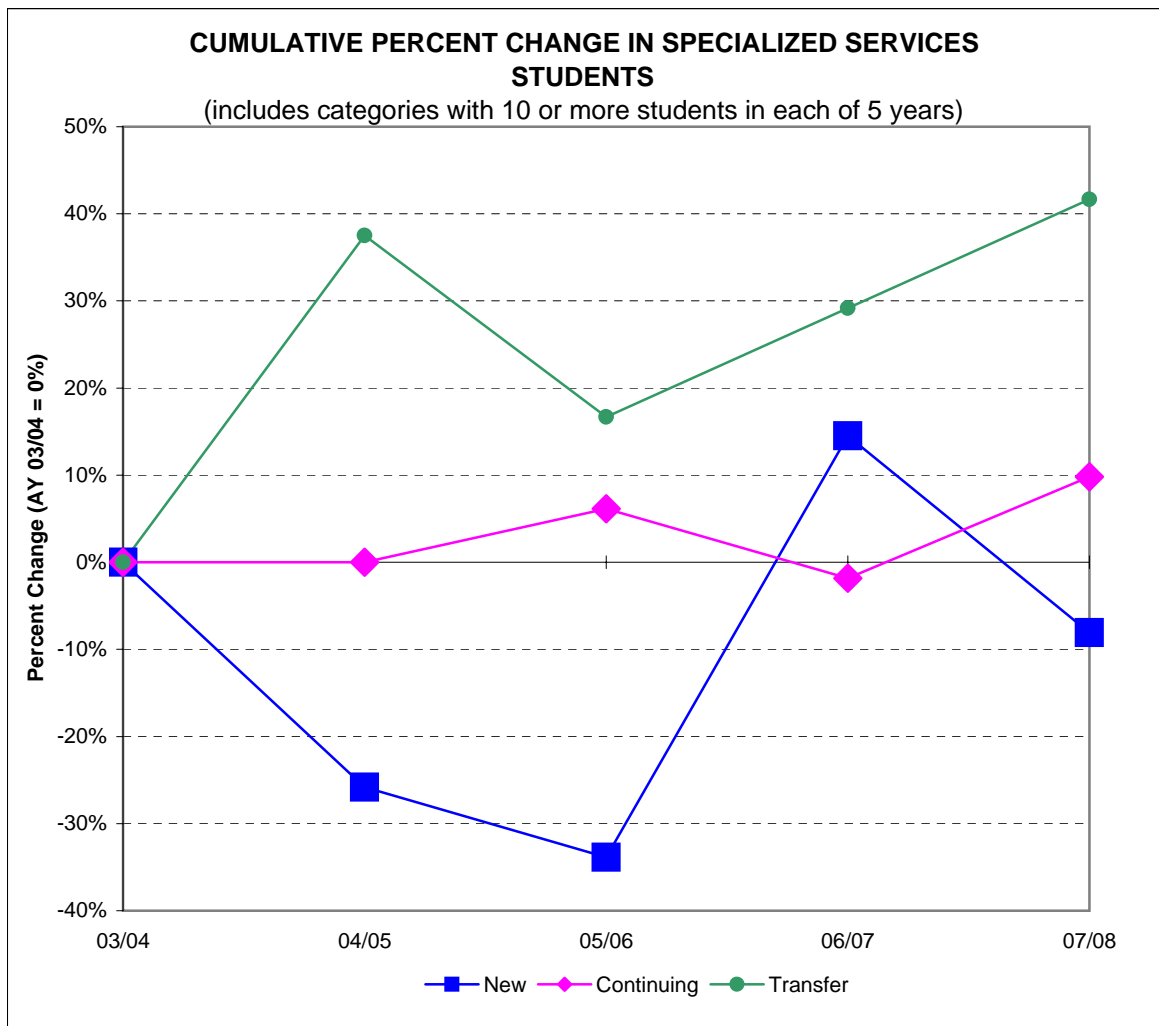
	03/04	04/05	05/06	06/07	07/08	Percent Change 03/04 to 07/08	Percent Change 06/07 to 07/08
Student Workers [2]	706	782	739	782	802	13.6%	2.6%

[1] This information is not system generated. Data is self-reported by unit.

[2] The Cahill Center acquired responsibility in 2002 for managing students assigned to perform special projects for faculty.

SPECIALIZED SERVICES^[1]

Students	03/04	04/05	05/06	06/07	07/08	Percent Change	Percent Change
						03/04 to 07/08	06/07 to 07/08
New [2]	62	46	41	71	57	-8.1%	-19.7%
Continuing	163	163	173	160	179	9.8%	11.9%
Transfer	24	33	28	31	34	41.7%	9.7%
Re-Admits	3	1	1	2	1	-66.7%	-50.0%
Visiting/NM	-	-	-	4	2		-50.0%
Total	252	243	243	268	273	8.3%	1.9%

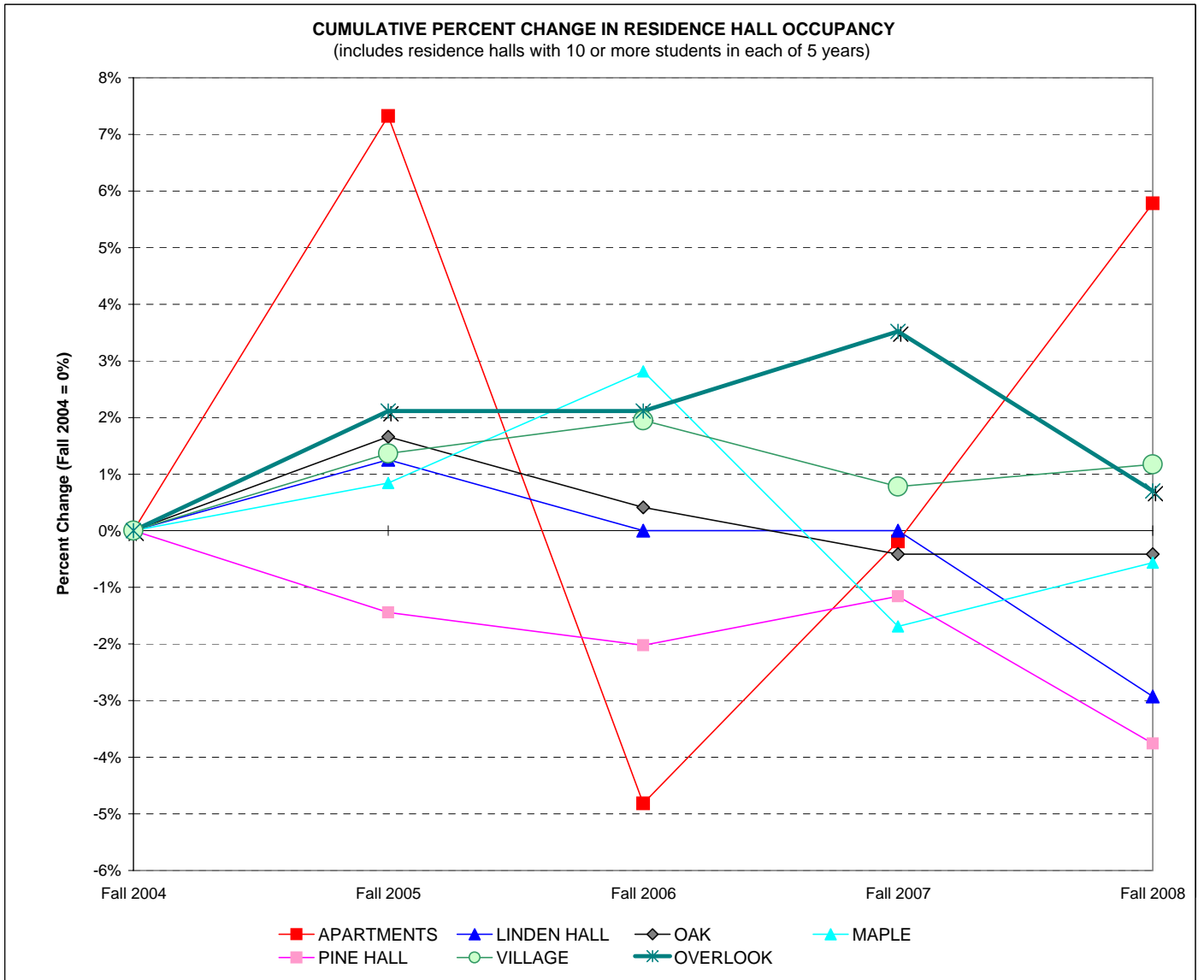


[1] This information is not system-generated. Data is self-reported by unit.

[2] Includes students already enrolled at Ramapo College for one or more semesters, but new to the Office of Specialized Services, and new first-time freshmen.

FALL SEMESTER RESIDENCE HALL OCCUPANCY, 2004 TO 2008^[1]

	Fall 2004		Fall 2005		Fall 2006		Fall 2007		Fall 2008		Percent Change 04 to 08	Percent Change 07 to 08
	Number	Percent	Number	Percent	Number	Percent	Number	Percent	Number	Percent		
APARTMENTS	519	20.8%	557	21.8%	494	17.9%	518	17.7%	549	18.3%	5.8%	6.0%
LINDEN HALL	239	9.6%	242	9.5%	239	8.7%	239	8.2%	232	7.7%	-2.9%	-2.9%
LODGE	-	-	-	-	-	-	-	-	-	-	N/A	N/A
OAK	241	9.7%	245	9.6%	242	8.8%	240	8.2%	240	8.0%	-0.4%	0.0%
MAPLE	355	14.2%	358	14.0%	365	13.3%	349	11.9%	353	11.8%	-0.6%	1.1%
PINE HALL	346	13.9%	341	13.4%	339	12.3%	342	11.7%	333	11.1%	-3.8%	-2.6%
OVERFLOW/HOTEL	-	-	-	-	-	-	-	-	59	2.0%	N/A	N/A
VILLAGE	513	20.5%	520	20.4%	523	19.0%	517	17.7%	519	17.3%	1.2%	0.4%
THE OVERLOOK	284	11.4%	290	11.4%	290	10.5%	294	10.0%	286	9.5%	N/A	-2.7%
LAUREL HALL	-	-	-	-	262	9.5%	430	14.7%	432	14.4%	N/A	0.5%
TOTAL	2,497		2,553		2,754		2,929		3,003		20.3%	2.5%



FINANCING FOR RESIDENCE LIFE, STUDENT CENTER, AND EDUCATIONAL PROJECTS ^{[1][2]}

Facilities Bond	Name	Interest Rate	Outstanding	Outstanding	Outstanding	Outstanding	Outstanding	Year Paid in Full
			Principal Payments Jun-04 (000)	Principal Payments Jun-05 (000)	Principal Payments Jun-06 (000)	Principal Payments Jun-07 (000)	Principal Payments Jun-08 (000)	
<u>Residence Life</u>								
Series 1973A	Phase I	5.300% to 5.600%	\$0	\$0	\$0	\$0	\$0	2003
Series 1998G	Oak Hall/Pavilion	4.100% to 4.625%	\$15,500	\$15,155	\$14,790	\$14,420	\$14,035	2028
Series 1999E [3]	Maple Hall/Pavilion Expansion	5.250% to 5.600%	\$2,420	\$2,065	\$1,690	\$1,300	\$890	2029
Series 2001D [4]	The Village/Apt. Wiring	4.100% to 5.000%	\$40,480	\$39,735	\$38,965	\$6,040	\$6,040	2031
Series 2002H [4]	Village Completion/Overlook	2.700% to 5.000%	\$28,610	\$28,580	\$28,000	\$18,610	\$18,610	2032
Series 2003G [3]	Pine & Linden	2.000% to 3.709%	\$9,300	\$9,300	\$9,185	\$7,875	\$6,540	2013
Series 2003H [3]	Oak Hall/Pavilion/Phase I Renov.	4.250% to 5.000%	\$18,930	\$18,930	\$18,930	\$18,930	\$18,915	2029
Series 2004E [4]	Laurel Hall	3.000% to 4.380%	\$0	\$44,350	\$44,350	\$10,575	\$10,575	2035
Series 2006I [4]	Advance Refunding of Bond Issues	4.000% to 5.000%	\$0	\$0	\$0	\$80,326	\$80,326	2036
<u>Student Center</u>								
Series 1998H	Student Center Renovations	4.100% to 4.600%	\$1,510	\$1,385	\$1,255	\$1,120	\$980	2013
Series 2002I [4]	Student Center Renovations	2.700% to 5.00%	\$2,085	\$2,045	\$2,005	\$1,345	\$1,345	2032
Series 2003F	Student Center Annex	1.500% to 3.500%	\$1,820	\$1,820	\$1,810	\$1,615	\$1,400	2013
Series 2006I [4]	Advance Refunding of Bond Issues	4.000% to 5.000%	\$0	\$0	\$0	\$625	\$625	2036
<u>Educational & General</u>								
Series 1998I	Voice, Video, Data	4.100% to 4.500%	\$550	\$450	\$345	\$235	\$120	2008
Series 2000B	Higher Ed Capital Bond Fund	4.500% to 5.750%	\$2,305	\$2,218	\$2,126	\$2,030	\$1,928	2021
Series 2001A	Dormitory Safety		\$826	\$757	\$688	\$619	\$551	2016
Series 2001E	Sustainability Center/Equip.	3.600% to 4.000%	\$1,885	\$1,535	\$1,170	\$795	\$405	2008
Series 2002A	Higher Ed Capital Bond Fund	3.00% to 5.250%	\$1,850	\$1,850	\$1,850	\$1,796	\$1,739	2023
Series 2002J [4]	Bradley Center/Havemeyer House	2.700% to 5.000%	\$29,580	\$29,550	\$28,945	\$19,495	\$19,495	2032
Series 2003A	Equipment Leasing Fund	2.500% to 5.000%	\$467	\$394	\$320	\$244	\$167	2010
Series 2004E [4]	Loop Road/Parking Garage	3.000% to 4.380%	\$0	\$9,630	\$9,630	\$3,105	\$3,105	2035
Series 2006D [4]	Sustainability Center Completion	3.750% to 4.500%	\$0	\$0	\$49,085	\$37,940	\$37,940	2036
Series 2006I [4]	Advance Refunding of Bond Issues	4.000% to 5.000%	\$0	\$0	\$0	\$25,869	\$25,869	2036
			<u>\$158,118</u>	<u>\$209,749</u>	<u>\$255,139</u>	<u>\$254,909</u>	<u>\$251,600</u>	

[1] This information is not system-generated. Data is self-reported by unit.

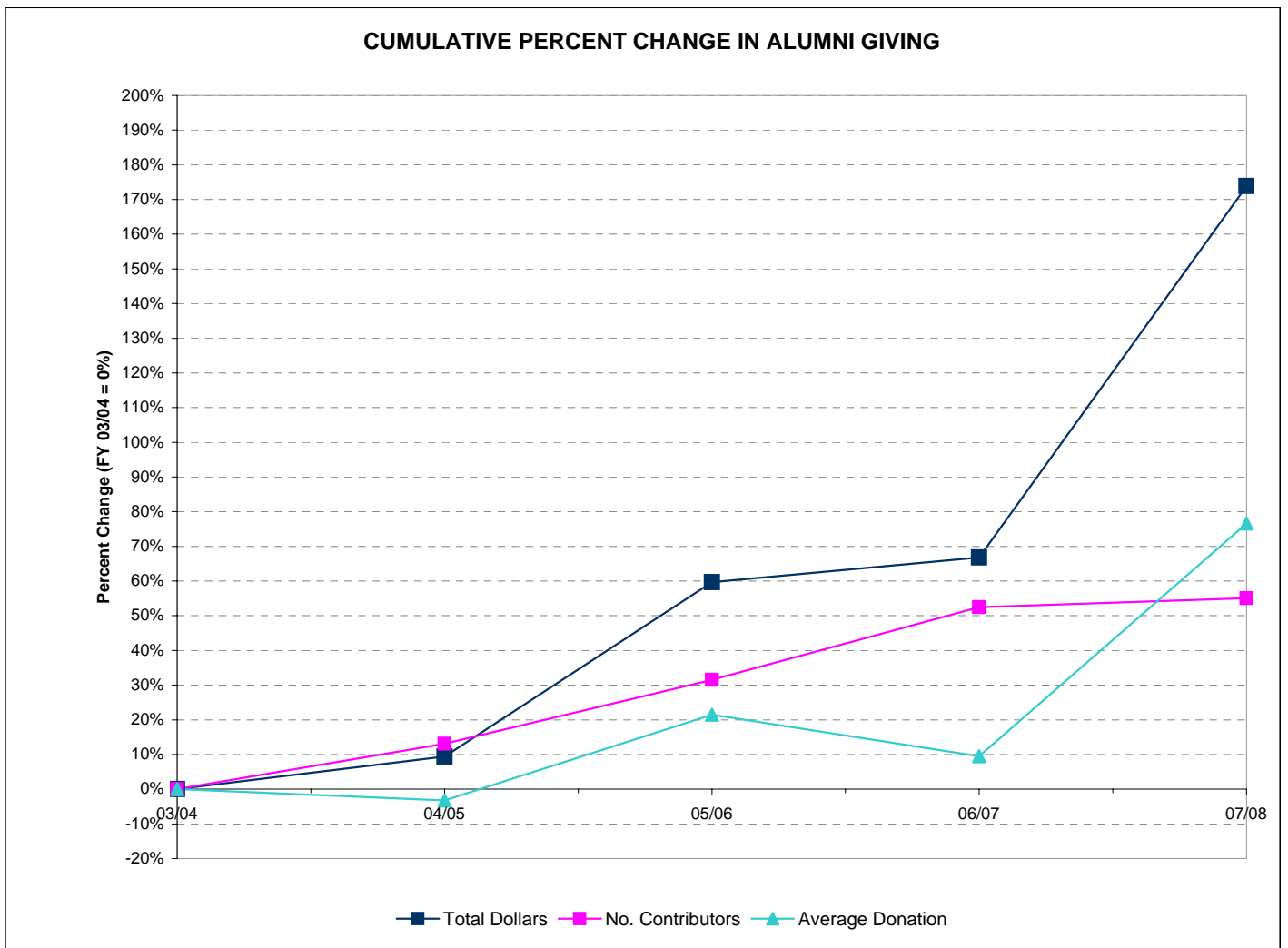
[2] The College has pledged all revenues generated from the operation of the residential facilities, the student center building and from other legally available funds of the College under the aforementioned capital lease agreements.

[3] Series 2003H partially replaced series 1999E through refinancing.

[4] Series 2006I partially replaced series 2001D, 2002H, 2002I, 2002J, 2004E, 2006D through refinancing.

ALUMNI GIVING, FISCAL YEAR 2004 TO FISCAL YEAR 2008^[1]

Giving	03/04	04/05	05/06	06/07	07/08	Percent Change	Percent Change
						03/04 to 07/08	06/07 to 07/08
Total Dollars	\$117,854	\$128,918	\$188,211	\$196,560	\$322,742	173.8%	64.2%
Number of Donors	1,637	1,851	2,153	2,496	2,538	55.0%	1.7%
Average Alumni Donation	\$71.99	\$69.65	\$87.42	\$78.85	\$127.16	76.6%	61.3%
Number of Alumni Solicited	15,825	16,574	17,886	18,224	18,982	19.9%	4.2%
Phonathon New Donors ^[2]	351	353	104	135	31	-91.2%	-77.0%



[1] This information is not system-generated. Data is self-reported by unit.

[2] Decrease in FY 05/06 and FY 06/07 due to strategic change in Phonathon to target a smaller group of no-donor alumni.

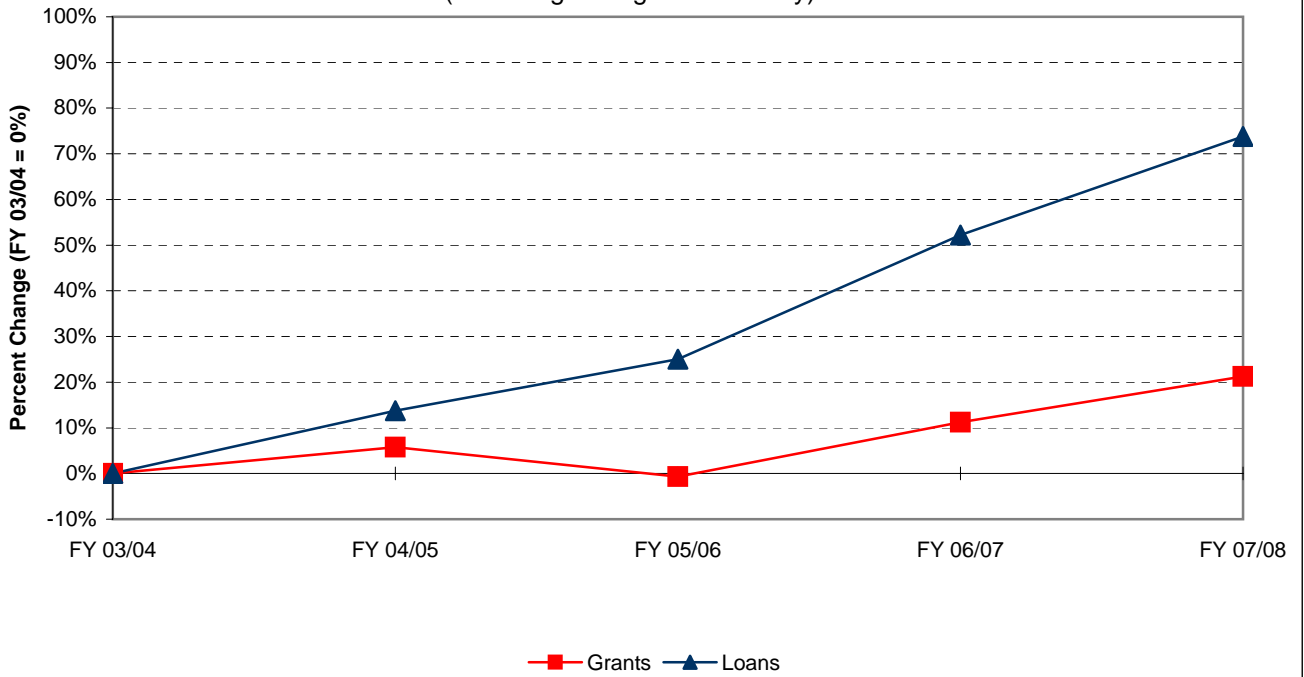
STUDENT FINANCIAL AID, FY 2004 TO FY 2008^[1]

<i>Financial Aid Dollars</i>	FY 03/04	FY 04/05	FY 05/06	FY 06/07	FY 07/08	Percent Change	Percent Change
	\$	\$	\$	\$	\$	03/04 to 07/08	06/07 to 07/08
Pell Grants	\$2,514,153	\$2,473,848	\$2,387,812	\$2,508,197	\$2,847,105	13.2%	13.5%
College Work Study	\$193,790	\$231,882	\$192,715	\$204,224	\$186,965	-3.5%	-8.5%
Perkins Loans	\$159,703	\$189,259	\$124,272	\$191,500	\$204,100	27.8%	6.6%
Stafford Loans (total)	\$10,251,425	\$11,027,934	\$10,695,474	\$11,910,750	\$13,768,187	34.3%	15.6%
Subsidized	\$6,392,347	\$6,997,434	\$6,712,707	\$7,212,263	\$8,709,543	36.2%	20.8%
Un-subsidized	\$3,859,078	\$4,030,500	\$3,982,767	\$4,698,487	\$5,058,644	31.1%	7.7%
SEOG	\$237,350	\$239,269	\$226,202	\$242,195	\$252,875	6.5%	4.4%
Parents Loans for Dependent Students	\$2,632,337	\$3,336,712	\$4,252,088	\$5,712,189	\$5,684,973	116.0%	-0.5%
Ramapo College Grants (total)	\$4,962,062	\$5,203,193	\$4,439,901	\$5,230,342	\$5,662,055	14.1%	8.3%
EOF	\$498,888	\$419,534	\$374,863	\$418,533	\$407,106	-18.4%	-2.7%
Non-EOF	\$0	\$1,767	\$9,703	\$0	\$0		
Institutional Grants	\$4,463,174	\$4,781,892	\$4,055,335	\$4,811,809	\$5,254,949	17.7%	9.2%
TAG	\$2,574,564	\$2,983,577	\$3,098,991	\$3,463,340	\$3,718,608	44.4%	7.4%
Educational Opportunity Fund (EOF)	\$315,499	\$311,800	\$381,067	\$347,085	\$379,728	20.4%	9.4%
New Jersey Class Loans	\$3,077,285	\$3,232,706	\$3,034,650	\$4,220,429	\$5,868,664	90.7%	39.1%
Private Loans	\$891,351	\$1,566,375	\$3,163,450	\$3,861,299	\$4,040,481	353.3%	4.6%
Total	\$27,809,519	\$30,796,555	\$31,996,622	\$37,891,550	\$42,613,741	53.2%	12.5%

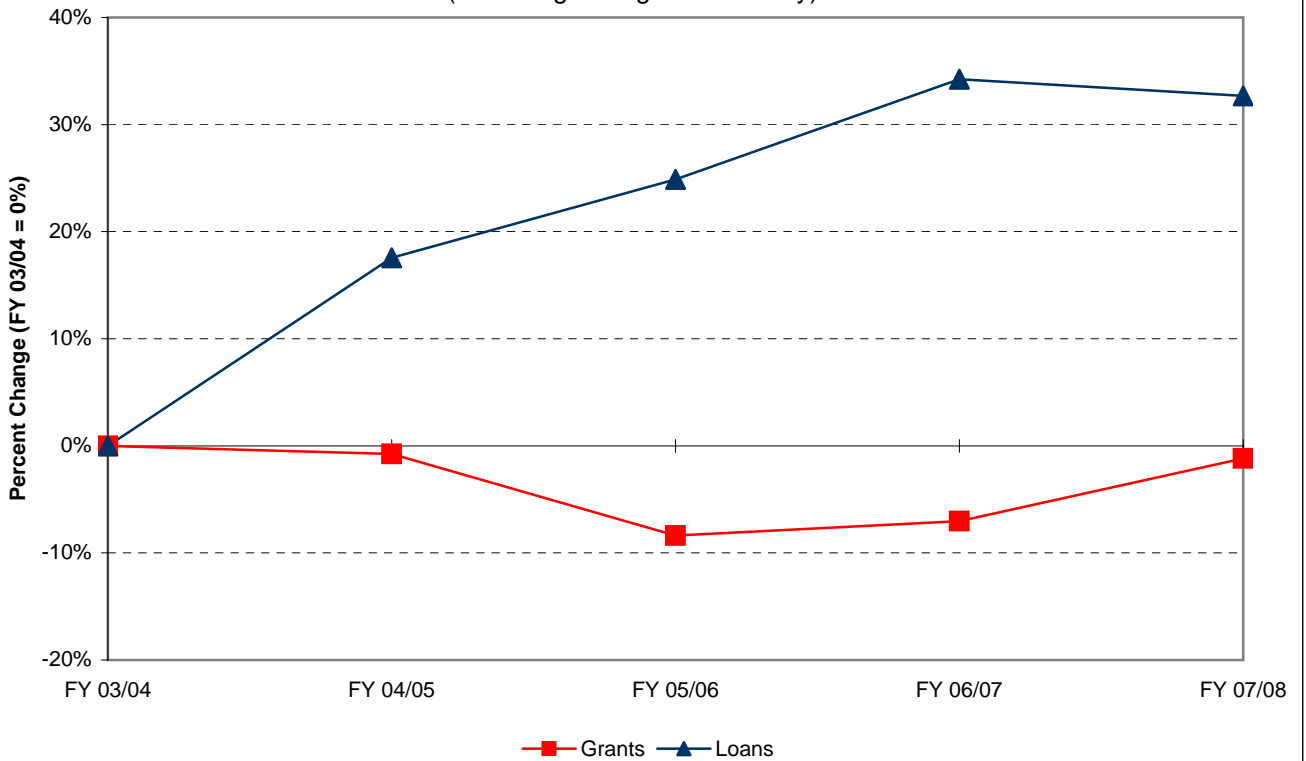
<i>Financial Aid Recipients</i>	FY 03/04	FY 04/05	FY 05/06	FY 06/07	FY 07/08	Percent Change	Percent Change
	#	#	#	#	#	03/04 to 07/08	06/07 to 07/08
Pell Grants	951	942	907	900	978	2.8%	8.7%
College Work Study	127	197	149	129	125	-1.6%	-3.1%
Perkins Loans	128	147	103	147	153	19.5%	4.1%
Stafford Loans (total)	2,783	2,909	2,783	3,210	3,356	20.6%	4.5%
Subsidized	1,703	1,839	1,762	1,972	2,098	23.2%	6.4%
Un-subsidized	1,080	1,070	1,021	1,238	1,258	16.5%	1.6%
SEOG	211	273	238	271	288	36.5%	6.3%
Parents Loans for Dependent Students	353	420	462	523	516	46.2%	-1.3%
Ramapo College Grants (total)	878	753	643	650	703	-19.9%	8.2%
EOF	109	124	115	123	149	36.7%	21.1%
Non-EOF	0	1	4	0	0	N/A	N/A
Institutional Grants	769	628	524	527	554	-28.0%	5.1%
TAG	827	865	811	822	851	2.9%	3.5%
Educational Opportunity Fund (EOF)	264	274	270	268	274	3.8%	2.2%
New Jersey Class Loans	375	369	310	358	468	24.8%	30.7%
Private Loans	104	178	318	354	364	250.0%	2.8%
Total	7,001	7,327	6,994	7,632	8,076	15.4%	5.8%

[1] This information is not system-generated. Data is self-reported by unit.

CUMULATIVE PERCENT CHANGE IN FINANCIAL AID DOLLARS BY SOURCE
(excluding College Work Study)



CUMULATIVE PCT. CHANGE IN NO. OF FINANCIAL AID RECIPIENTS BY SOURCE
(excluding College Work Study)



CAMPUS SECURITY ANNUAL REPORT ^[1]

Reported Occurrences	2003	2004	2005	2006	2007	Percent Change	Percent Change
						2003 to 2007	2006 to 2007
Criminal Homicide	0	0	0	0	0	N/A	N/A
<i>Sexual Offenses:</i>							
Forcible: Rape, Sodomy, Assault (with an object), Fondling	4	5	13 ^[4]	4 ^[2]	5	0.0%	25.0%
Non-Forcible: Incest, Statutory Rape	0	0	0	0	0	N/A	N/A
Robbery	0	0	1	0	0	N/A	N/A
Aggravated Assault	2	0	2	0	0	-100.0%	N/A
Burglary	11	8	19	19	11	0.0%	-42.1%
Motor Vehicle Theft	1	0	0	5 ^[3]	2	400.0%	-60.0%
Arson	0	0	0	1	8 ^[5]	N/A	700.0%
Hate Crimes	0	0	0	0	0	N/A	N/A
Arrests:							
Weapon Law Violation	2	0	1	1	0	N/A	-100.0%
Drug Abuse Violation	12	3	4	10	8	-33.3%	-20.0%
Liquor Law Violation	0	0	0	0	0	N/A	N/A

[1] This information is not system-generated. Data is self-reported by unit. Crime statistics reported using FBI definitions. Figures are the most current available in the Campus Crime Statistics publication of 8/08.

[2] In most incidents, the victim was acquainted with the perpetrator.

[3] All 5 motor vehicle thefts involved golfcarts that were recovered.

[4] Revised count in the Campus Crime Statistics publication of 8/08.

[5] The increased reporting of arsons in this year is due to a requirement by the NJ State Fire Marshal's Office to report all incidents involving the burning of paper and posters on bulletin boards and doors causing minimal to no damage. In the past such incidents were classified by the Mahwah Police Departments as Criminal Damage under the NJ State Criminal Code.

STUDENT PARTICIPATION IN STUDY ABROAD PROGRAMS, AY 03-04 TO AY 07-08^[1]

2-4 Week Programs	AY 03-04		AY 04-05		AY 05-06 ^[6]		AY 06-07 ^[7]		AY 07-08		Percent Change 03/04 to 07/08	Percent Change 06/07 to 07/08
	Participants		Participants		Participants		Participants		Participants			
	No.	Pct.	No.	Pct.	No.	Pct.	No.	Pct.	No.	Pct.		
American Southwest	21	10.8%	19	12.5%	24	22.6%	-	-	-	-	N/A	N/A
American West	11	5.6%	9	5.9%	-	-	-	-	10	15.4%	-9.1%	N/A
Austria	-	-	-	-	-	-	-	-	1	1.5%	N/A	N/A
China	-	-	-	-	-	-	1	3.4%	7	10.8%	N/A	600.0%
Costa Rica [2]	22	11.3%	21	13.8%	-	-	2	6.9%	2	3.1%	-90.9%	0.0%
England [3]	74	37.9%	49	32.2%	65	61.3%	1	3.4%	5	7.7%	-93.2%	400.0%
Ireland	38	19.5%	-	-	1	0.9%	2	6.9%	8	12.3%	-78.9%	300.0%
Italy	3	1.5%	40	26.3%	1	0.9%	6	20.7%	16	24.6%	433.3%	166.7%
Jamaica	16	8.2%	-	-	11	10.4%	-	-	-	-	N/A	N/A
Prague	6	3.1%	8	5.3%	-	-	1	3.4%	2	3.1%	-66.7%	100.0%
Quebec City	2	1.0%	3	2.0%	-	-	1	3.4%	-	-	N/A	N/A
Scotland	-	-	-	-	-	-	-	-	1	1.5%	N/A	N/A
Spain (with NJSCIS)	-	-	-	-	1	0.9%	4	13.8%	13	20.0%	N/A	225.0%
Washington D.C. Internship [4]	2	1.0%	1	0.7%	-	-	-	-	-	-	N/A	N/A
Other Programs [5]	-	-	2	1.3%	3	2.8%	11	37.9%	-	-	N/A	N/A
Total	195		152		106		29		65		-66.7%	124.1%

[1] This data is not system-generated; it is self-reported by the unit. These numbers include students from both Ramapo College and other campuses.

[2] The Costa Rica programs (Intensa Spanish Language, and Eco-Systems) were previously sponsored by Ramapo. As of AY06-07, programs in Costa Rica are sponsored by the NJ State Consortium for International Students (NJSCIS).

[3] The England Regents program ended in AY05-06. Programs in England are now sponsored by the NJSCIS.

[4] The Washington DC program was a credit-bearing semester sponsored by Ramapo.

[5] Represents Ramapo student participation in non-Ramapo sponsored programs.

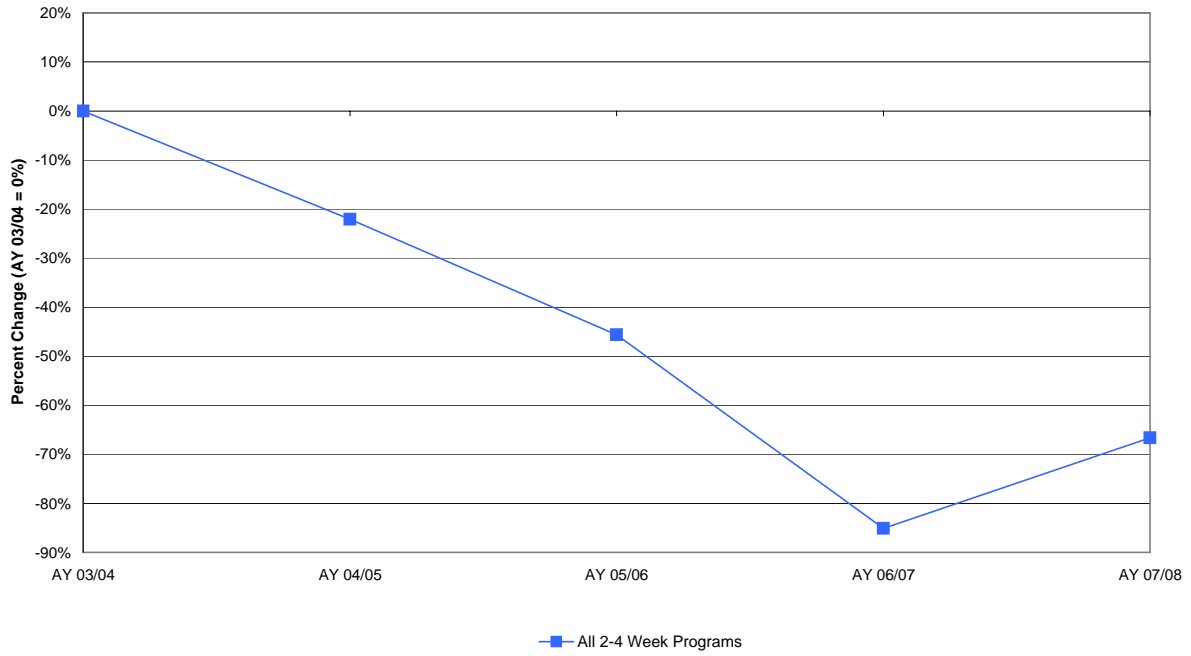
[6] Beginning in Spring 2006, Ramapo students participated in programs sponsored by the NJSCIS.

During AY 05-06 only 4 programs were sponsored entirely through Ramapo (American SW, American West, India & Australia).

[7] After Winter 2006, only one program (the India Semester) was offered entirely through Ramapo. Programs continue with the NJSCIS.

Full Semester Programs	F 03 - Spr 04		F 04 - Spr 05		F 05 - Spr 06		F 06 - Spr 07		F 07 - Spr 08		Percent Change 03/04 to 07/08	Percent Change 06/07 to 07/08
	Participants		Participants		Participants		Participants		Participants			
	No.	Pct.	No.	Pct.	No.	Pct.	No.	Pct.	No.	Pct.		
Argentina	-	-	-	-	-	-	1	2.3%	-	-	N/A	N/A
Australia	3	11.5%	6	20.7%	10	32.3%	12	27.9%	13	28.3%	333.3%	8.3%
Costa Rica	-	-	-	-	-	-	-	-	1	2.2%	N/A	N/A
Czech Republic	-	-	-	-	-	-	-	-	1	2.2%	N/A	N/A
England	10	38.5%	3	10.3%	4	12.9%	7	16.3%	3	6.5%	-70.0%	-57.1%
France	-	-	-	-	-	-	2	4.7%	2	4.3%	N/A	0.0%
Germany	-	-	10	34.5%	-	-	-	-	3	6.5%	N/A	N/A
India	13	-	10	-	14	45.2%	10	23.3%	10	21.7%	-23.1%	0.0%
Ireland	-	-	-	-	1	-	2	4.7%	3	6.5%	N/A	50.0%
Italy	-	-	-	-	-	-	2	4.7%	2	4.3%	N/A	0.0%
Japan	-	-	-	-	-	-	2	4.7%	1	2.2%	N/A	-50.0%
Kenya	-	-	-	-	-	-	1	2.3%	-	-	N/A	N/A
Mexico	-	-	-	-	-	-	-	-	1	2.2%	N/A	N/A
Poland	-	-	-	-	1	3.2%	-	-	-	-	N/A	N/A
Scotland	-	-	-	-	-	-	-	-	1	2.2%	N/A	N/A
Semester at Sea	-	-	-	-	-	-	1	2.3%	1	2.2%	N/A	0.0%
Spain	-	-	-	-	1	3.2%	3	7.0%	4	8.7%	N/A	33.3%
Total	26		29		31		43		46		76.9%	7.0%

CUMULATIVE PERCENT CHANGE IN 2- 4 WEEK STUDY ABROAD PROGRAM PARTICIPATION



CUMULATIVE PERCENT CHANGE IN FULL SEMESTER STUDY ABROAD PROGRAM PARTICIPATION

