

SECTION IV:

**DEGREES AWARDED AND
STUDENT OUTCOMES**

2008 INSTITUTIONAL PROFILE

TOTAL 2007-08 DEGREES AWARDED = 1,350

By Age

	Bachelor's		Master's		Total	
Less than 20	0	0.0%	0	0.0%	0	0.0%
20 to 24	928	75.2%	0	0.0%	928	68.7%
25 to 29	199	16.1%	39	33.6%	238	17.6%
30 to 39	51	4.1%	22	19.0%	73	5.4%
Greater than 39	56	4.5%	55	47.4%	111	8.2%
	1,234		116		1,350	

By Sex

	Bachelor's		Master's		Total	
Female	776	62.9%	96	82.8%	872	64.6%
Male	458	37.1%	20	17.2%	478	35.4%
	1,234		116		1,350	

By Ethnicity

	Bachelor's		Master's		Total	
American Indian/Native Alaskan	0	0.0%	0	0.0%	0	0.0%
Asian/Pacific Islander	57	4.6%	3	2.6%	60	4.4%
Black, non-Hispanic	69	5.6%	6	5.2%	75	5.6%
Hispanic	83	6.7%	1	0.9%	84	6.2%
White, non-Hispanic	1,025	83.1%	106	91.4%	1,131	83.8%
	1,234		116		1,350	

By Citizenship

	Bachelor's		Master's		Total	
U.S. Citizen/Permanent Resident	1,201	97.3%	115	99.1%	1,316	97.5%
non-Citizen/non-Resident	33	2.7%	1	0.9%	34	2.5%
	1,234		116		1,350	

By Ethnicity and Citizenship

	Bachelor's		Master's		Total	
American Indian/Native Alaskan	0	0.0%	0	0.0%	0	0.0%
Asian/Pacific Islander	50	4.1%	3	2.6%	53	3.9%
Black, non-Hispanic	59	4.8%	6	5.2%	65	4.8%
Hispanic	82	6.6%	1	0.9%	83	6.1%
White, non-Hispanic	1,010	81.8%	105	90.5%	1,115	82.6%
Nonresident Alien	33	2.7%	1	0.9%	34	2.5%
	1,234		116		1,350	

By Status When First Admitted

	Bachelor's		Master's		Total	
Regular Admit	587	47.6%	114	98.3%	701	51.9%
Special Admit	55	4.5%	0	0.0%	55	4.1%
EOF Admit	46	3.7%	0	0.0%	46	3.4%
Transfer Admit	539	43.7%	2	1.7%	541	40.1%
EOF Transfer Admit	7	0.6%	0	0.0%	7	0.5%
	1,234		116		1,350	

By Degree Type

	Bachelor's		Master's		Total	
Bachelor of Arts (BA)	736	59.6%	0	0.0%	736	54.5%
Bachelor of Science (BS)	368	29.8%	0	0.0%	368	27.3%
Bachelor of Science in Nursing (BSN)	101	8.2%	0	0.0%	101	7.5%
Bachelor of Social Work (BSW)	29	2.4%	0	0.0%	29	2.1%
Master of Arts in Liberal Studies (MALS)	0	0.0%	4	3.4%	4	0.3%
Master of Business Administration (MBA)	0	0.0%	6	5.2%	6	0.4%
Master of Science in Educational Technology (MSET)	0	0.0%	84	72.4%	84	6.2%
Master of Science in Nursing (MSN)	0	0.0%	22	19.0%	22	1.6%
	1,234		116		1,350	

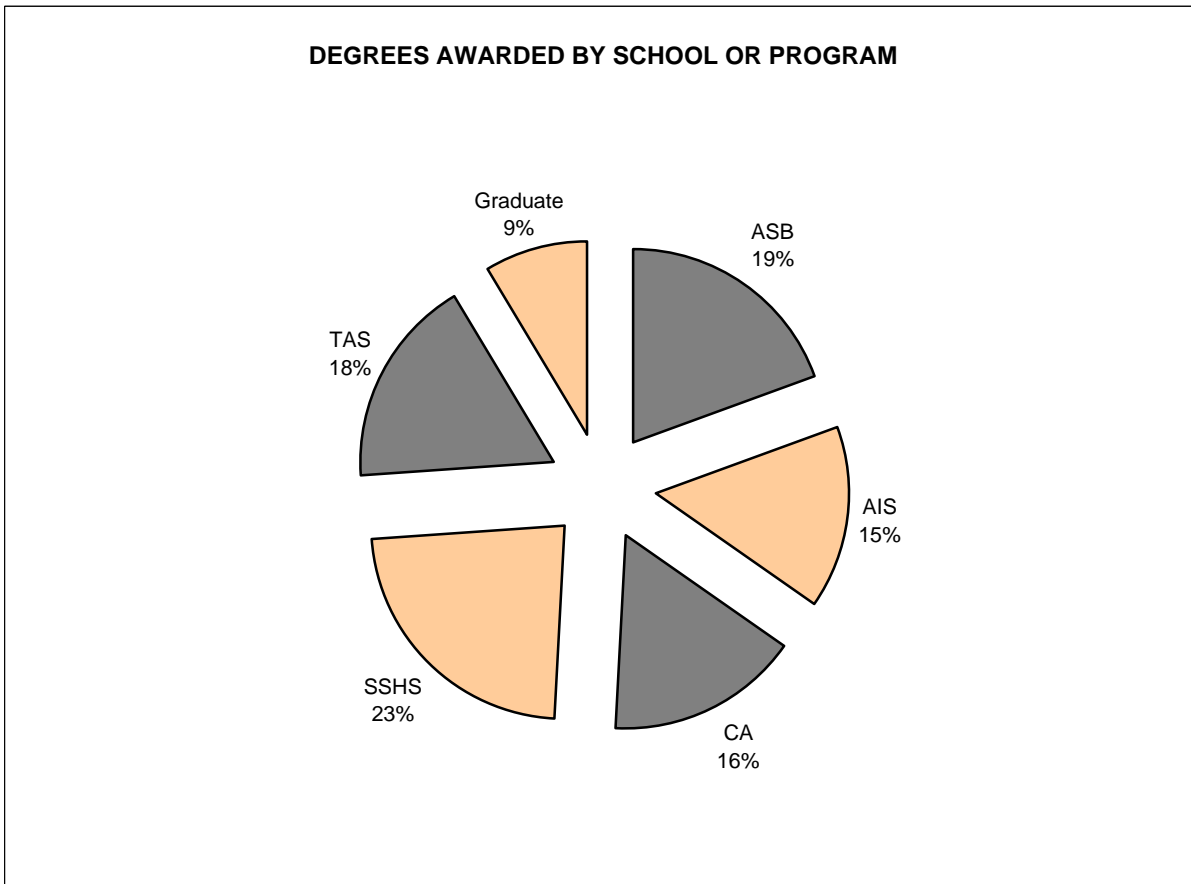
TOTAL 2007-08 DEGREES AWARDED = 1,350

	Bachelor of Arts (BA)		Bachelor of Science (BS)		Bachelor of Science in Nursing (BSN)		Bachelor of Social Work (BSW)		Master of Arts in Liberal Studies (MALS)		Master of Business Admin. (MBA)		Master of Science in Ed. Tech. (MSET)		Master of Science in Nursing (MSN)	
	Number	Percent	Number	Percent	Number	Percent	Number	Percent	Number	Percent	Number	Percent	Number	Percent	Number	Percent
By Age																
Less than 20	0	0.0%	0	0.0%	0	0.0%	0	0.0%	0	0.0%	0	0.0%	0	0.0%	0	0.0%
20 to 24	576	78.3%	274	74.5%	60	59.4%	18	62.1%	0	0.0%	0	0.0%	0	0.0%	0	0.0%
25 to 29	123	16.7%	56	15.2%	13	12.9%	7	24.1%	2	50.0%	1	16.7%	33	39.3%	3	13.6%
30 to 39	17	2.3%	21	5.7%	12	11.9%	1	3.4%	0	0.0%	1	16.7%	17	20.2%	4	18.2%
> 39	20	2.7%	17	4.6%	16	15.8%	3	10.3%	2	50.0%	4	66.7%	34	40.5%	15	68.2%
	736		368		101		29		4		6		84		22	
By Sex																
Female	477	64.8%	185	50.3%	88	87.1%	26	89.7%	3	75.0%	1	16.7%	70	83.3%	22	100.0%
Male	259	35.2%	183	49.7%	13	12.9%	3	10.3%	1	25.0%	5	83.3%	14	16.7%	0	0.0%
	736		368		101		29		4		6		84		22	
By Ethnicity																
Am. Ind./Nat. Al.	0	0.0%	0	0.0%	0	0.0%	0	0.0%	0	0.0%	0	0.0%	0	0.0%	0	0.0%
Asian/Pac. Is.	13	1.8%	19	5.2%	24	23.8%	1	3.4%	0	0.0%	0	0.0%	1	1.2%	2	9.1%
Black, non-Hisp.	33	4.5%	16	4.3%	16	15.8%	4	13.8%	0	0.0%	0	0.0%	2	2.4%	4	18.2%
Hispanic	54	7.3%	19	5.2%	6	5.9%	4	13.8%	0	0.0%	0	0.0%	0	0.0%	1	4.5%
White, non-Hisp.	636	86.4%	314	85.3%	55	54.5%	20	69.0%	4	100.0%	6	100.0%	81	96.4%	15	68.2%
	736		368		101		29		4		6		84		22	
By Citizenship																
U.S. Citizen	725	98.5%	350	95.1%	98	97.0%	28	96.6%	3	75.0%	6	100.0%	84	100.0%	22	100.0%
non-Citizen	11	1.5%	18	4.9%	3	3.0%	1	3.4%	1	25.0%	0	0.0%	0	0.0%	0	0.0%
	736		368		101		29		4		6		84		22	
By Ethnicity & Citizenship																
Am. Ind./Nat. Al.	0	0.0%	0	0.0%	0	0.0%	0	0.0%	0	0.0%	0	0.0%	0	0.0%	0	0.0%
Asian/Pac. Is.	11	1.5%	17	4.6%	22	21.8%	0	0.0%	0	0.0%	0	0.0%	1	1.2%	2	9.1%
Black, non-Hisp.	30	4.1%	10	2.7%	15	14.9%	4	13.8%	0	0.0%	0	1.0%	2	2.4%	4	18.2%
Hispanic	53	7.2%	19	5.2%	6	5.9%	4	13.8%	0	0.0%	0	0.0%	0	0.0%	1	4.5%
White, non-Hisp.	631	85.7%	304	82.6%	55	54.5%	20	69.0%	3	75.0%	6	100.0%	81	96.4%	15	68.2%
Nonresident Alien	11	1.5%	18	4.9%	3	3.0%	1	3.4%	1	25.0%	0	0.0%	0	0.0%	0	0.0%
	736		368		101		29		4		6		84		22	
By Initial Admit Type																
Regular	356	48.4%	186	50.5%	37	36.6%	8	27.6%	4	100.0%	6	100.0%	82	97.6%	22	100.0%
Special	42	5.7%	12	3.3%	0	0.0%	1	3.4%	0	0.0%	0	0.0%	0	0.0%	0	0.0%
EOF	32	4.3%	2	0.5%	9	8.9%	3	10.3%	0	0.0%	0	0.0%	0	0.0%	0	0.0%
Transfer	302	41.0%	167	45.4%	55	54.5%	15	51.7%	0	0.0%	0	0.0%	2	2.4%	0	0.0%
EOF Transfer	4	0.5%	1	0.3%	0	0.0%	2	6.9%	0	0.0%	0	0.0%	0	0.0%	0	0.0%
	736		368		101		29		4		6		84		22	

TOTAL 2007-08 DEGREES AWARDED = 1,350

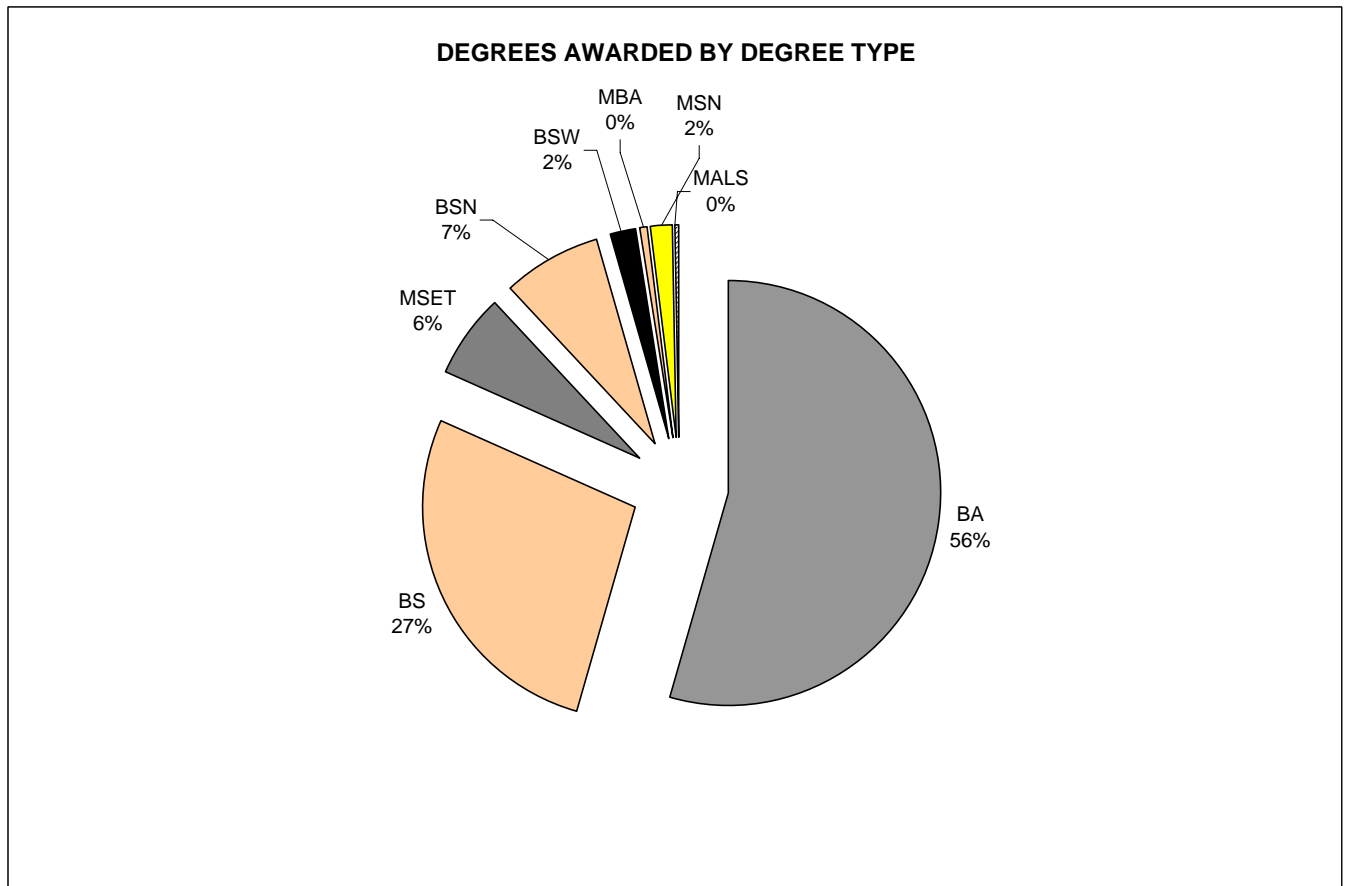
By School and Combined Graduate Programs

Anisfield School of Business	263	19.5%
American and International Studies	204	15.1%
Contemporary Arts	220	16.3%
Social Science and Human Services	310	23.0%
Theoretical and Applied Sciences	237	17.6%
Graduate Degree Programs (combined)	116	8.6%



TOTAL 2007-08 DEGREES AWARDED = 1,350

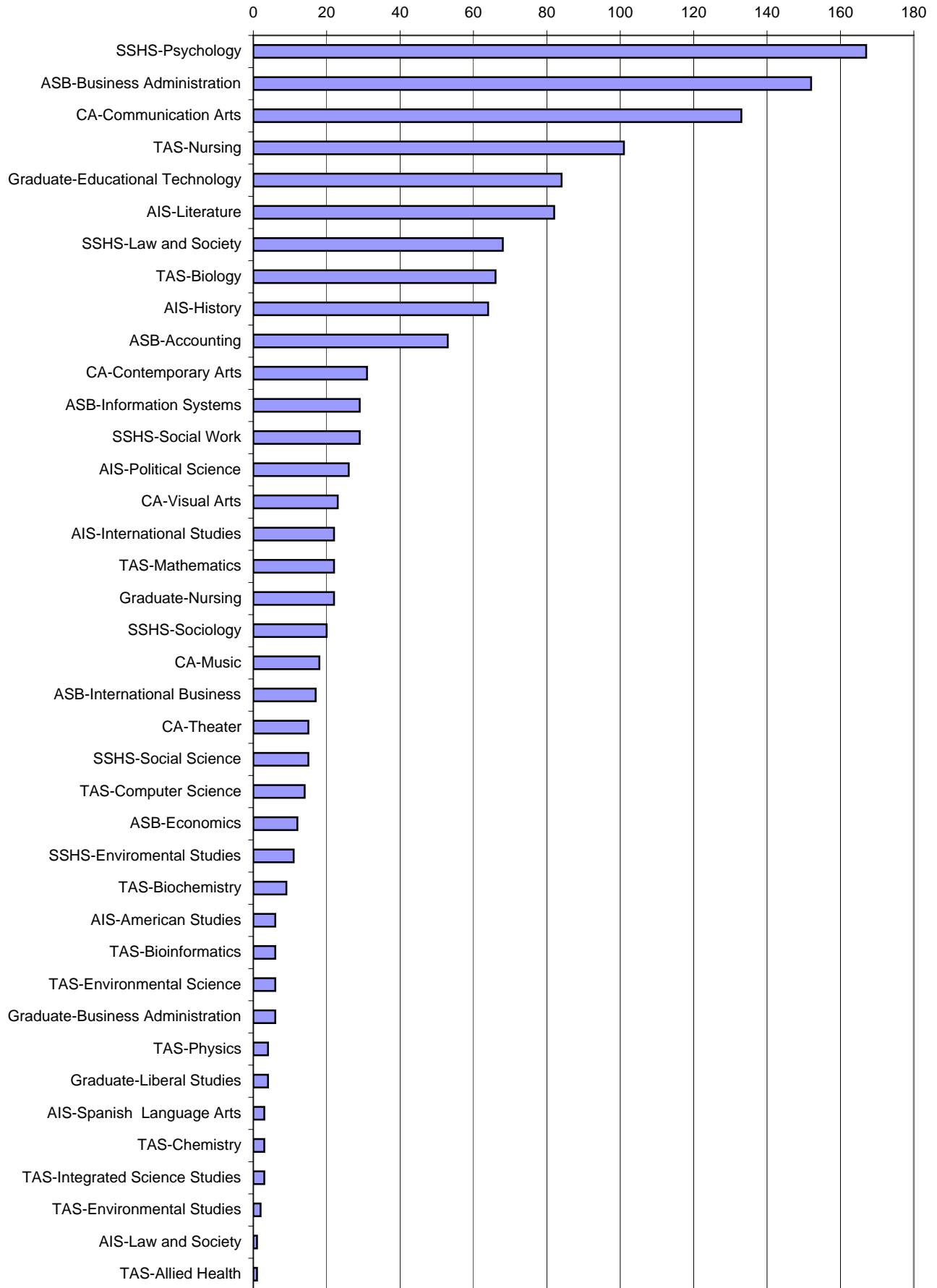
School or Program	BA		BS		BSN		BSW		MA		MBA		MSET		MSN	
	No.	Pct.	No.	Pct.	No.	Pct.	No.	Pct.	No.	Pct.	No.	Pct.	No.	Pct.	No.	Pct.
Anisfield School of Business	29	3.9%	234	63.6%	0	0.0%	0	0.0%	0	0.0%	0	0.0%	0	0.0%	0	0.0%
American & Int'l. Studies	204	27.7%	0	0.0%	0	0.0%	0	0.0%	0	0.0%	0	0.0%	0	0.0%	0	0.0%
Contemporary Arts	220	29.9%	0	0.0%	0	0.0%	0	0.0%	0	0.0%	0	0.0%	0	0.0%	0	0.0%
Soc. Science & Human Services	281	38.2%	0	0.0%	0	0.0%	29	100.0%	0	0.0%	0	0.0%	0	0.0%	0	0.0%
Theoretical & Applied Science	2	0.3%	134	36.4%	101	100.0%	0	0.0%	0	0.0%	0	0.0%	0	0.0%	0	0.0%
Grad. Liberal Studies (MALS)	0	0.0%	0	0.0%	0	0.0%	0	0.0%	4	100.0%	0	0.0%	0	0.0%	0	0.0%
Grad. Business Admin. (MBA)	0	0.0%	0	0.0%	0	0.0%	0	0.0%	0	0.0%	6	100.0%	0	0.0%	0	0.0%
Grad. Educational Tech. (MSET)	0	0.0%	0	0.0%	0	0.0%	0	0.0%	0	0.0%	0	0.0%	84	100.0%	0	0.0%
Grad. Nursing (MSN)	0	0.0%	0	0.0%	0	0.0%	0	0.0%	0	0.0%	0	0.0%	0	0.0%	22	100.0%
	736		368		101		29		4		6		84		22	



By School and Major (with Graduate Programs)

ASB	Accounting	53	3.9%
	Business Administration	152	11.3%
	Economics	12	0.9%
	Information Systems	29	2.1%
	International Business	17	1.3%
AIS	American Studies	6	0.4%
	History	64	4.7%
	International Studies	22	1.6%
	Law and Society	1	0.1%
	Literature	82	6.1%
	Political Science	26	1.9%
	Spanish Language Arts	3	0.2%
CA	Communication Arts	133	9.9%
	Contemporary Arts	31	2.3%
	Music	18	1.3%
	Theater	15	1.1%
	Visual Arts	23	1.7%
SSHS	Environmental Studies	11	0.8%
	Law and Society	68	5.0%
	Psychology	167	12.4%
	Social Science	15	1.1%
	Social Work	29	2.1%
	Sociology	20	1.5%
TAS	Allied Health	1	0.1%
	Biochemistry	9	0.7%
	Bioinformatics	6	0.4%
	Biology	66	4.9%
	Chemistry	3	0.2%
	Computer Science	14	1.0%
	Environmental Science	6	0.4%
	Environmental Studies	2	0.1%
	Integrated Science Studies	3	0.2%
	Mathematics	22	1.6%
	Nursing	101	7.5%
	Physics	4	0.3%
	GRADUATE PROGRAMS	Liberal Studies	4
Business Administration		6	0.4%
Educational Technology		84	6.2%
Nursing		22	1.6%

DEGREES AWARDED 2007-08 BY SCHOOL AND MAJOR/PROGRAM



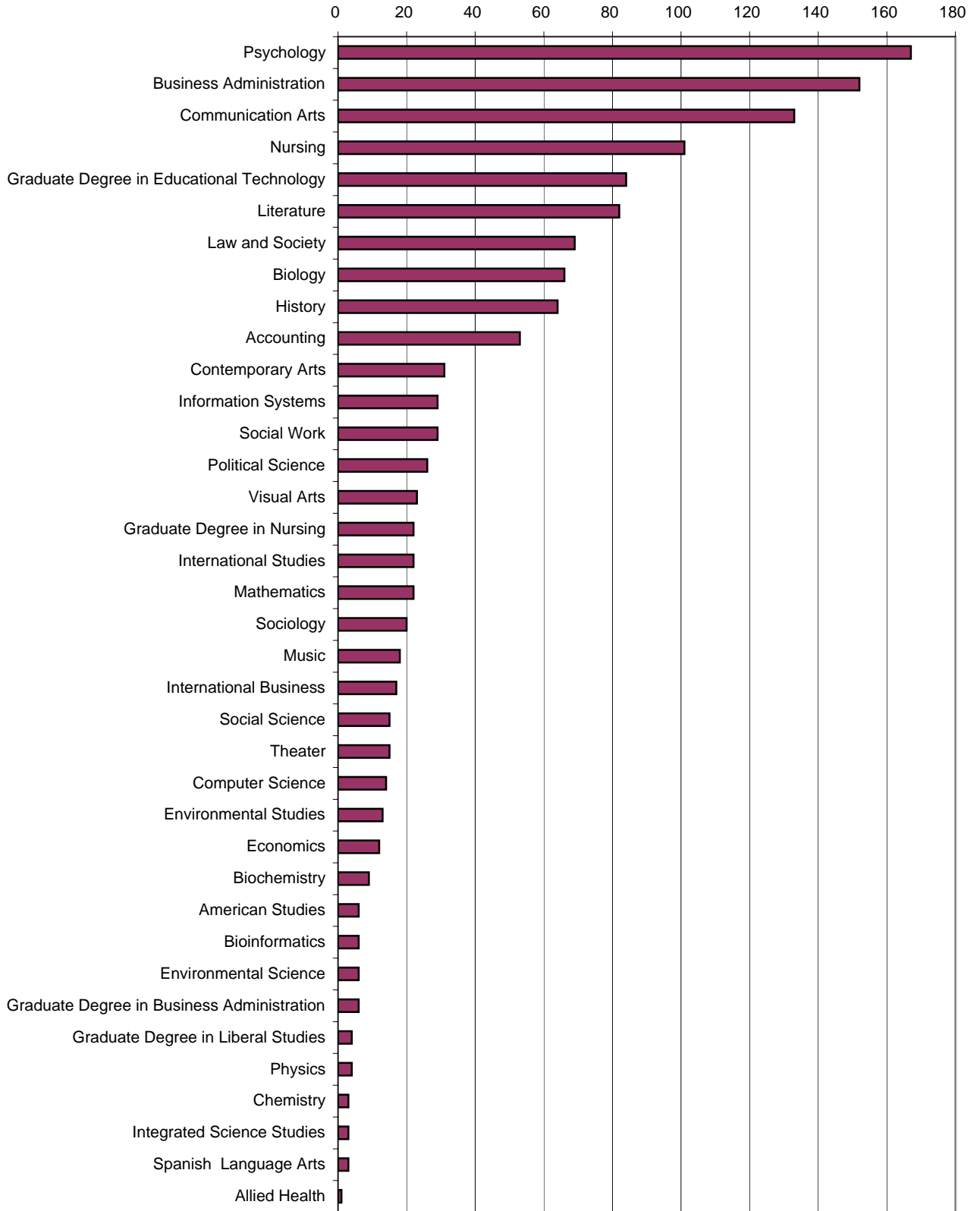
By Major or Graduate Program

Accounting	53	3.9%
Allied Health	1	0.1%
American Studies	6	0.4%
Biochemistry	9	0.7%
Bioinformatics	6	0.4%
Biology	66	4.9%
Business Administration	152	11.3%
Chemistry	3	0.2%
Communication Arts	133	9.9%
Computer Science	14	1.0%
Contemporary Arts	31	2.3%
Economics	12	0.9%
Environmental Studies ^[1]	13	1.0%
Environmental Science	6	0.4%
Graduate Degree in Business Administration	6	0.4%
Graduate Degree in Educational Technology	84	6.2%
Graduate Degree in Liberal Studies	4	0.3%
Graduate Degree in Nursing	22	1.6%
History	64	4.7%
Information Systems	29	2.1%
Integrated Science Studies	3	0.2%
International Business	17	1.3%
International Studies	22	1.6%
Law and Society ^[2]	69	5.1%
Literature	82	6.1%
Mathematics	22	1.6%
Music	18	1.3%
Nursing	101	7.5%
Physics	4	0.3%
Political Science	26	1.9%
Psychology	167	12.4%
Social Science	15	1.1%
Social Work	29	2.1%
Sociology	20	1.5%
Spanish Language Arts	3	0.2%
Theater	15	1.1%
Visual Arts	23	1.7%
	1,350	100.0%

[1] Includes students from SSHS and TAS

[2] Includes students from SSHS and AIS

2007-08 DEGREES AWARDED BY MAJOR

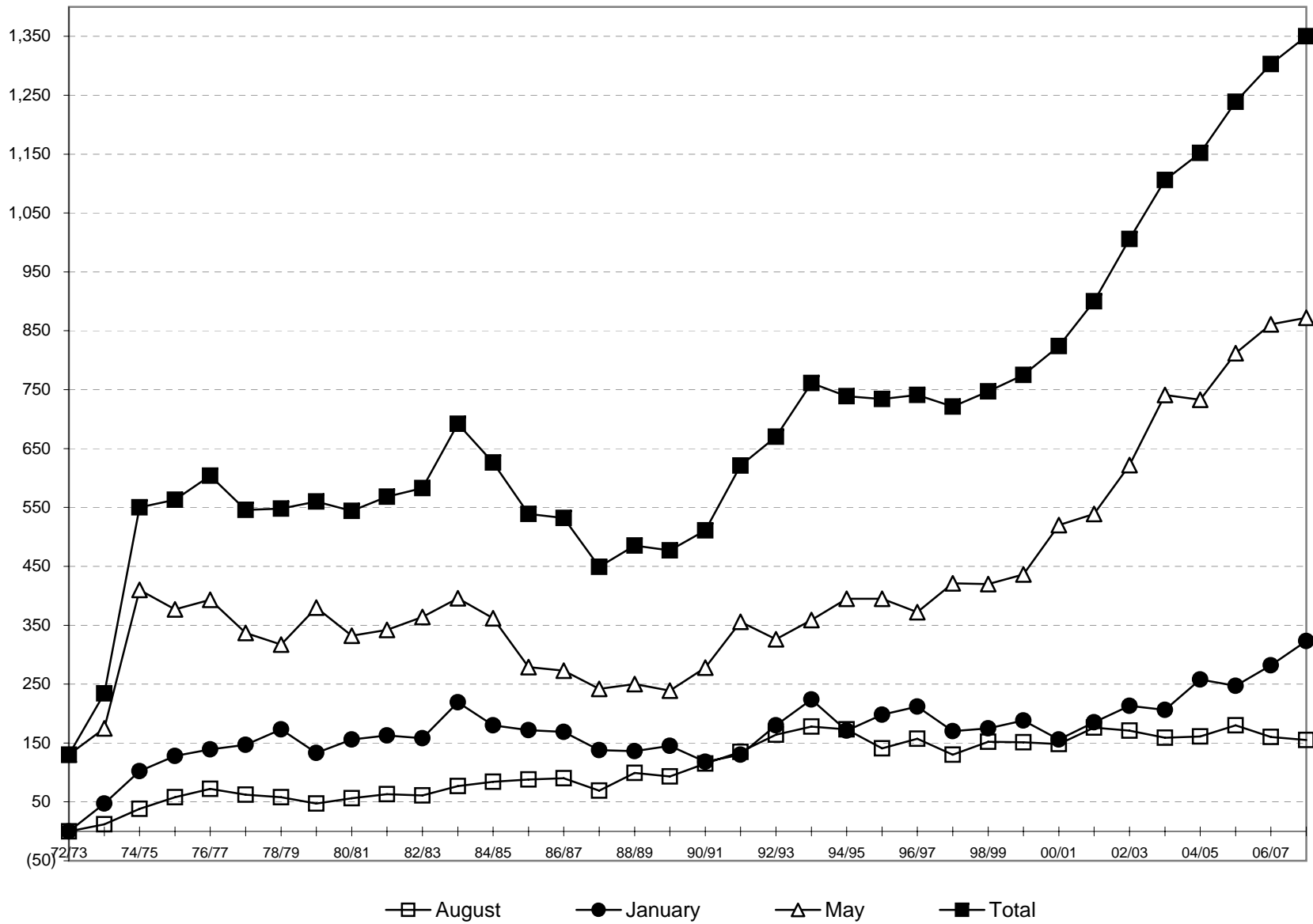


TOTAL DEGREES AWARDED, 1972 TO 2007-08*

Year	AUGUST DEGREES			JANUARY DEGREES			MAY DEGREES			TOTAL FISCAL YEAR DEGREES			CUMULATIVE DEGREES AWARDED SINCE 1972-73
	Number of Degrees Awarded	Percent Change From Previous August	Cumulative Percent Change From Aug. 1973	Number of Degrees Awarded	Percent Change From Previous January	Cumulative Percent Change From Jan. 1974	Number of Degrees Awarded	Percent Change From Previous May	Cumulative Percent Change From May 1973	Number of Degrees Awarded	Percent Change From Previous Fiscal Year	Cumulative Percent Change From 1972-73	
1972-73	N/A	N/A	N/A	N/A	N/A	N/A	130	N/A	0.0%	130	N/A	0.0%	130
1973-74	12	N/A	0.0%	47	N/A	0.0%	175	34.6%	34.6%	234	80.0%	80.0%	364
1974-75	38	216.7%	216.7%	102	117.0%	117.0%	410	134.3%	215.4%	550	135.0%	323.1%	914
1975-76	58	52.6%	383.3%	128	25.5%	172.3%	377	-8.0%	190.0%	563	2.4%	333.1%	1,477
1976-77	72	24.1%	500.0%	139	8.6%	195.7%	393	4.2%	202.3%	604	7.3%	364.6%	2,081
1977-78	62	-13.9%	416.7%	147	5.8%	212.8%	337	-14.2%	159.2%	546	-9.6%	320.0%	2,627
1978-79	58	-6.5%	383.3%	173	17.7%	268.1%	317	-5.9%	143.8%	548	0.4%	321.5%	3,175
1979-80	47	-19.0%	291.7%	133	-23.1%	183.0%	380	19.9%	192.3%	560	2.2%	330.8%	3,735
1980-81	56	19.1%	366.7%	156	17.3%	231.9%	332	-12.6%	155.4%	544	-2.9%	318.5%	4,279
1981-82	63	12.5%	425.0%	163	4.5%	246.8%	342	3.0%	163.1%	568	4.4%	336.9%	4,847
1982-83	61	-3.2%	408.3%	158	-3.1%	236.2%	364	6.4%	180.0%	583	2.6%	348.5%	5,430
1983-84	77	26.2%	541.7%	219	38.6%	366.0%	396	8.8%	204.6%	692	18.7%	432.3%	6,122
1984-85	84	9.1%	600.0%	180	-17.8%	283.0%	362	-8.6%	178.5%	626	-9.5%	381.5%	6,748
1985-86	88	4.8%	633.3%	172	-4.4%	266.0%	279	-22.9%	114.6%	539	-13.9%	314.6%	7,287
1986-87	90	2.3%	650.0%	169	-1.7%	259.6%	273	-2.2%	110.0%	532	-1.3%	309.2%	7,819
1987-88	69	-23.3%	475.0%	138	-18.3%	193.6%	242	-11.4%	86.2%	449	-15.6%	245.4%	8,268
1988-89	99	43.5%	725.0%	136	-1.4%	189.4%	250	3.3%	92.3%	485	8.0%	273.1%	8,753
1989-90	93	-6.1%	675.0%	145	6.6%	208.5%	239	-4.4%	83.8%	477	-1.6%	266.9%	9,230
1990-91	115	23.7%	858.3%	118	-18.6%	151.1%	278	16.3%	113.8%	511	7.1%	293.1%	9,741
1991-92	135	17.4%	1025.0%	130	10.2%	176.6%	356	28.1%	173.8%	621	21.5%	377.7%	10,362
1992-93	164	21.5%	1266.7%	180	38.5%	283.0%	326	-8.4%	150.8%	670	7.9%	415.4%	11,032
1993-94	178	8.5%	1383.3%	224	24.4%	376.6%	359	10.1%	176.2%	761	13.6%	485.4%	11,793
1994-95	173	-2.8%	1341.7%	171	-23.7%	263.8%	395	10.0%	203.8%	739	-2.9%	468.5%	12,532
1995-96	141	-18.5%	1075.0%	198	15.8%	321.3%	395	0.0%	203.8%	734	-0.7%	464.6%	13,266
1996-97	157	11.3%	1208.3%	212	7.1%	351.1%	372	-5.8%	186.2%	741	1.0%	470.0%	14,007
1997-98	130	-17.2%	983.3%	170	-19.8%	261.7%	421	13.2%	223.8%	721	-2.7%	454.6%	14,728
1998-99	152	16.9%	1166.7%	175	2.9%	272.3%	420	-0.2%	223.1%	747	3.6%	474.6%	15,475
1999-00	151	-0.7%	1158.3%	188	7.4%	300.0%	436	3.8%	235.4%	775	3.7%	496.2%	16,250
2000-01	148	-2.0%	1133.3%	156	-17.0%	231.9%	520	19.3%	300.0%	824	6.3%	533.8%	17,074
2001-02	176	18.9%	1366.7%	185	18.6%	293.6%	539	3.7%	314.6%	900	9.2%	592.3%	17,974
2002-03	171	-2.8%	1325.0%	213	15.1%	353.2%	622	15.4%	378.5%	1,006	11.8%	673.8%	18,980
2003-04	159	-7.0%	1225.0%	206	-3.3%	338.3%	741	19.1%	470.0%	1,106	9.9%	750.8%	20,086
2004-05	161	1.3%	1241.7%	258	25.2%	448.9%	733	-1.1%	463.8%	1,152	4.2%	786.2%	21,238
2005-06	180	11.8%	1400.0%	247	-4.3%	425.5%	812	10.8%	524.6%	1,239	7.6%	853.1%	22,477
2006-07	160	-11.1%	1233.3%	282	14.2%	500.0%	861	6.0%	562.3%	1,303	5.2%	902.3%	23,780
2007-08	155	-3.1%	1191.7%	323	14.5%	587.2%	872	1.3%	570.8%	1,350	3.6%	938.5%	25,130

* Degrees are reported on a fiscal year basis. For example, 2007-08 graduates include degree recipients from August 2007, January 2008, and May 2008.

DEGREES AWARDED BY FISCAL YEAR, 1972-73 TO 2007-08



DEGREES AWARDED BY AGE, 2003-04 TO 2007-08

	2003-04		2004-05		2005-06		2006-07		2007-08		Pct. Change 03/04 to 07/08	Pct. Change 06/07 to 07/08
	No.	Pct.	No.	Pct.	No.	Pct.	No.	Pct.	No.	Pct.		
Bachelor's												
Less Than 20	0	0.0%	0	0.0%	0	0.0%	1	0.1%	0	0.0%	N/A	-100.0%
20 to 24	652	64.6%	695	66.4%	758	68.7%	869	72.0%	928	75.2%	42.3%	6.8%
25 to 29	208	20.6%	203	19.4%	195	17.7%	193	16.0%	199	16.1%	-4.3%	3.1%
30 to 39	76	7.5%	83	7.9%	82	7.4%	78	6.5%	51	4.1%	-32.9%	-34.6%
40 and Over	74	7.3%	65	6.2%	68	6.2%	66	5.5%	56	4.5%	-24.3%	-15.2%
Total	1,010		1,046		1,103		1,207		1,234		22.2%	2.2%

	2003-04		2004-05		2005-06		2006-07		2007-08		Pct. Change 03/04 to 07/08	Pct. Change 06/07 to 07/08
	No.	Pct.	No.	Pct.	No.	Pct.	No.	Pct.	No.	Pct.		
Graduate												
Less Than 20	0	0.0%	0	0.0%	0	0.0%	0	0.0%	0	0.0%	N/A	N/A
20 to 24	1	1.0%	1	0.9%	1	0.7%	0	0.0%	0	0.0%	-100.0%	N/A
25 to 29	29	30.2%	34	32.1%	42	30.9%	20	20.8%	39	33.6%	34.5%	95.0%
30 to 39	38	39.6%	34	32.1%	37	27.2%	29	30.2%	22	19.0%	-42.1%	-24.1%
40 and Over	28	29.2%	37	34.9%	56	41.2%	47	49.0%	55	47.4%	96.4%	17.0%
Total	96		106		136		96		116		20.8%	20.8%

Total	2003-04		2004-05		2005-06		2006-07		2007-08		Pct. Change 03/04 to 07/08	Pct. Change 06/07 to 07/08
	No.	Pct.	No.	Pct.	No.	Pct.	No.	Pct.	No.	Pct.		
Less Than 20	0	0.0%	0	0.0%	0	0.0%	1	0.1%	0	0.0%	N/A	-100.0%
20 to 24	653	59.0%	696	60.4%	759	61.3%	869	66.7%	928	68.7%	42.1%	6.8%
25 to 29	237	21.4%	237	20.6%	237	19.1%	213	16.3%	238	17.6%	0.4%	11.7%
30 to 39	114	10.3%	117	10.2%	119	9.6%	107	8.2%	73	5.4%	-36.0%	-31.8%
40 and Over	102	9.2%	102	8.9%	124	10.0%	113	8.7%	111	8.2%	8.8%	-1.8%
Total	1,106		1,152		1,239		1,303		1,350		22.1%	9.0%



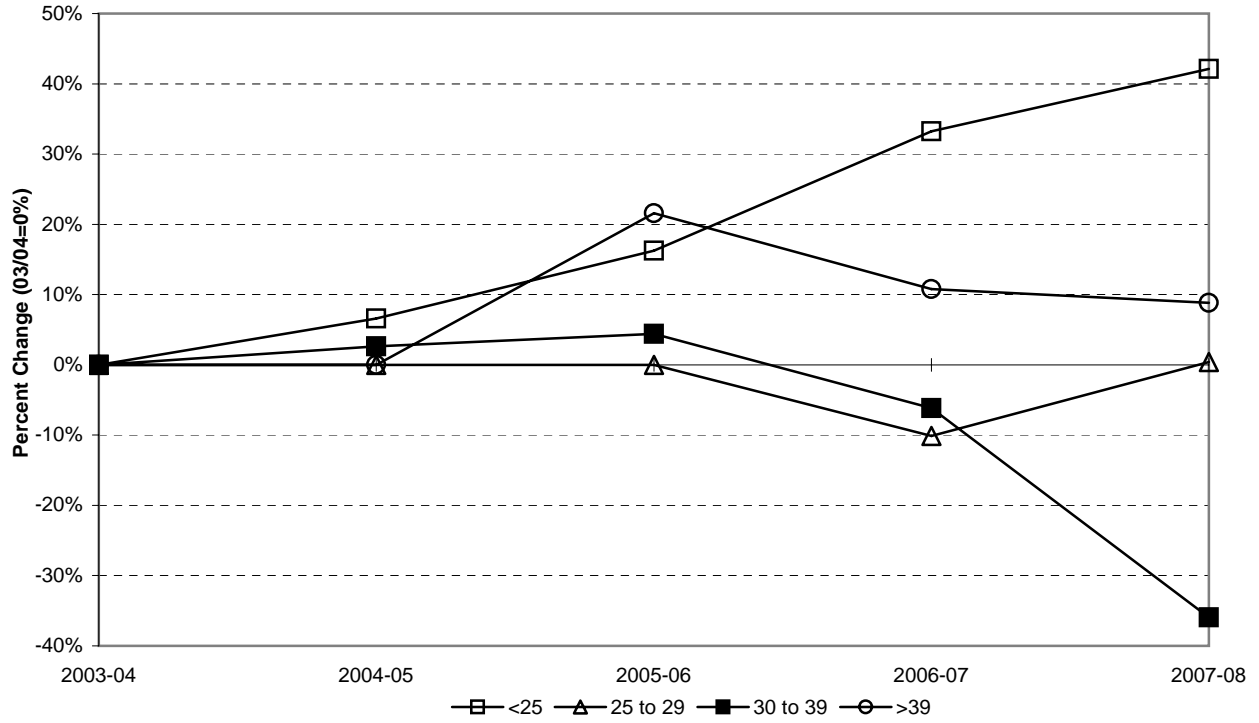
DEGREES AWARDED BY SEX, 2003-04 TO 2007-08

	2003-04		2004-05		2005-06		2006-07		2007-08		Pct. Change 03/04 to 07/08	Pct. Change 06/07 to 07/08
	No.	Pct.	No.	Pct.	No.	Pct.	No.	Pct.	No.	Pct.		
Bachelor's												
Female	604	59.8%	671	64.1%	694	62.9%	712	59.0%	776	62.9%	28.5%	9.0%
Male	406	40.2%	375	35.9%	409	37.1%	495	41.0%	458	37.1%	12.8%	-7.5%
Total	1,010		1,046		1,103		1,207		1,234		22.2%	2.2%

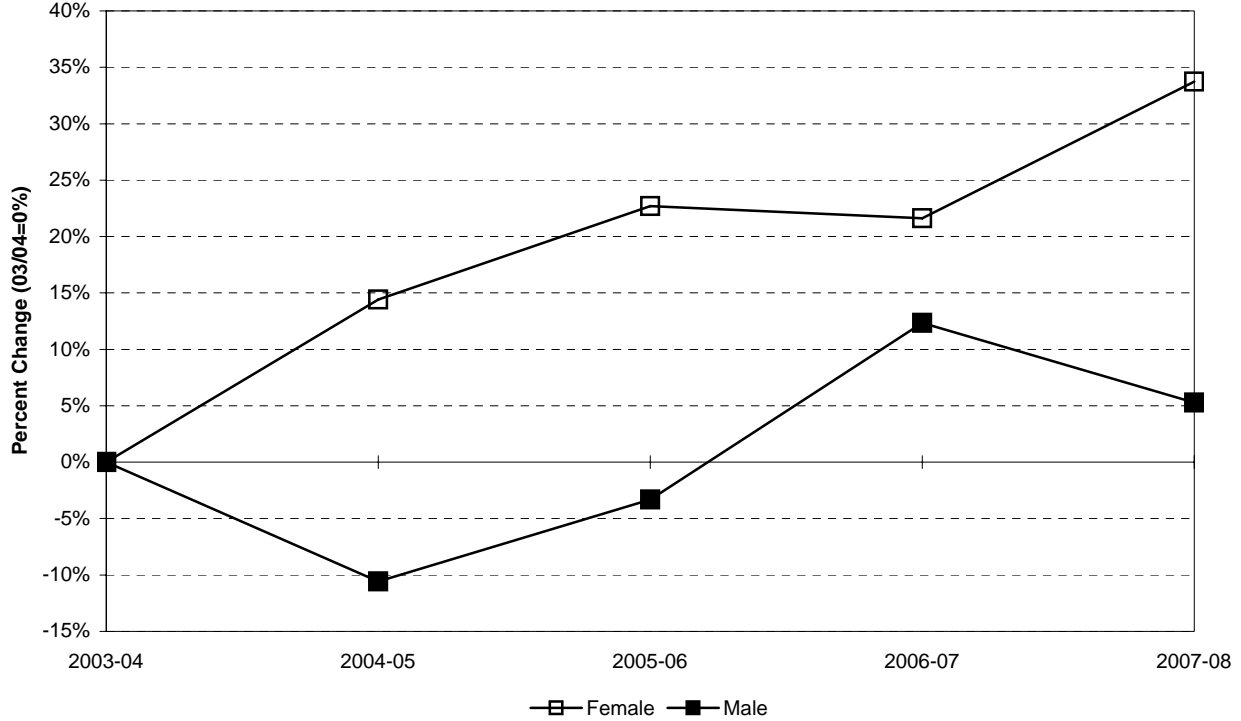
	2003-04		2004-05		2005-06		2006-07		2007-08		Pct. Change 03/04 to 07/08	Pct. Change 06/07 to 07/08
	No.	Pct.	No.	Pct.	No.	Pct.	No.	Pct.	No.	Pct.		
Graduate												
Female	48	50.0%	75	70.8%	106	77.9%	81	84.4%	96	82.8%	100.0%	18.5%
Male	48	50.0%	31	29.2%	30	22.1%	15	15.6%	20	17.2%	-58.3%	33.3%
Total	96		106		136		96		116		20.8%	20.8%

Total	2003-04		2004-05		2005-06		2006-07		2007-08		Pct. Change 03/04 to 07/08	Pct. Change 06/07 to 07/08
	No.	Pct.	No.	Pct.	No.	Pct.	No.	Pct.	No.	Pct.		
Female	652	59.0%	746	64.8%	800	64.6%	793	60.9%	872	64.6%	33.7%	10.0%
Male	454	41.0%	406	35.2%	439	35.4%	510	39.1%	478	35.4%	5.3%	-6.3%
Total	1,106		1,152		1,239		1,303		1,350		22.1%	9.0%

CUMULATIVE PERCENT CHANGE IN DEGREES AWARDED BY AGE



CUMULATIVE PERCENT CHANGE IN DEGREES AWARDED BY SEX



DEGREES AWARDED BY ETHNICITY, 2003-04 TO 2007-08

Bachelor's	2003-04		2004-05		2005-06		2006-07		2007-08		Pct. Change 03/04 to 07/08	Pct. Change 06/07 to 07/08
	No.	Pct.	No.	Pct.	No.	Pct.	No.	Pct.	No.	Pct.		
American Indian/Nat. Al.	1	0.1%	2	0.2%	4	0.4%	6	0.5%	0	0.0%	-100.0%	-100.0%
Asian/Pacific Islander	54	5.3%	64	6.1%	56	5.1%	69	5.7%	57	4.6%	5.6%	-17.4%
Black, non-Hispanic	61	6.0%	66	6.3%	78	7.1%	77	6.4%	69	5.6%	13.1%	-10.4%
Hispanic	61	6.0%	60	5.7%	81	7.3%	89	7.4%	83	6.7%	36.1%	-6.7%
White, non-Hispanic	833	82.5%	854	81.6%	884	80.1%	966	80.0%	1,025	83.1%	23.0%	6.1%
Total	1,010		1,046		1,103		1,207		1,234		22.2%	2.2%

Graduate	2003-04		2004-05		2005-06		2006-07		2007-08		Pct. Change 03/04 to 07/08	Pct. Change 06/07 to 07/08
	No.	Pct.	No.	Pct.	No.	Pct.	No.	Pct.	No.	Pct.		
American Indian/Nat. Al.	0	0.0%	0	0.0%	1	0.7%	0	0.0%	0	0.0%	N/A	N/A
Asian/Pacific Islander	9	9.4%	2	1.9%	1	0.7%	4	4.2%	3	2.6%	-66.7%	-25.0%
Black, non-Hispanic	2	2.1%	4	3.8%	6	4.4%	3	3.1%	6	5.2%	200.0%	100.0%
Hispanic	1	1.0%	3	2.8%	5	3.7%	3	3.1%	1	0.9%	0.0%	-66.7%
White, non-Hispanic	84	87.5%	97	91.5%	123	90.4%	86	89.6%	106	91.4%	26.2%	23.3%
Total	96		106		136		96		116		20.8%	20.8%

Total	2003-04		2004-05		2005-06		2006-07		2007-08		Pct. Change 03/04 to 07/08	Pct. Change 06/07 to 07/08
	No.	Pct.	No.	Pct.	No.	Pct.	No.	Pct.	No.	Pct.		
American Indian/Nat. Al.	1	0.1%	2	0.2%	5	0.4%	6	0.5%	0	0.0%	-100.0%	-100.0%
Asian/Pacific Islander	63	5.7%	66	5.7%	57	4.6%	73	5.6%	60	4.4%	-4.8%	-17.8%
Black, non-Hispanic	63	5.7%	70	6.1%	84	6.8%	80	6.1%	75	5.6%	19.0%	-6.3%
Hispanic	62	5.6%	63	5.5%	86	6.9%	92	7.1%	84	6.2%	35.5%	-8.7%
White, non-Hispanic	917	82.9%	951	82.6%	1,007	81.3%	1,052	80.7%	1,131	83.8%	23.3%	7.5%
Total	1,106		1,152		1,239		1,303		1,350		22.1%	3.6%



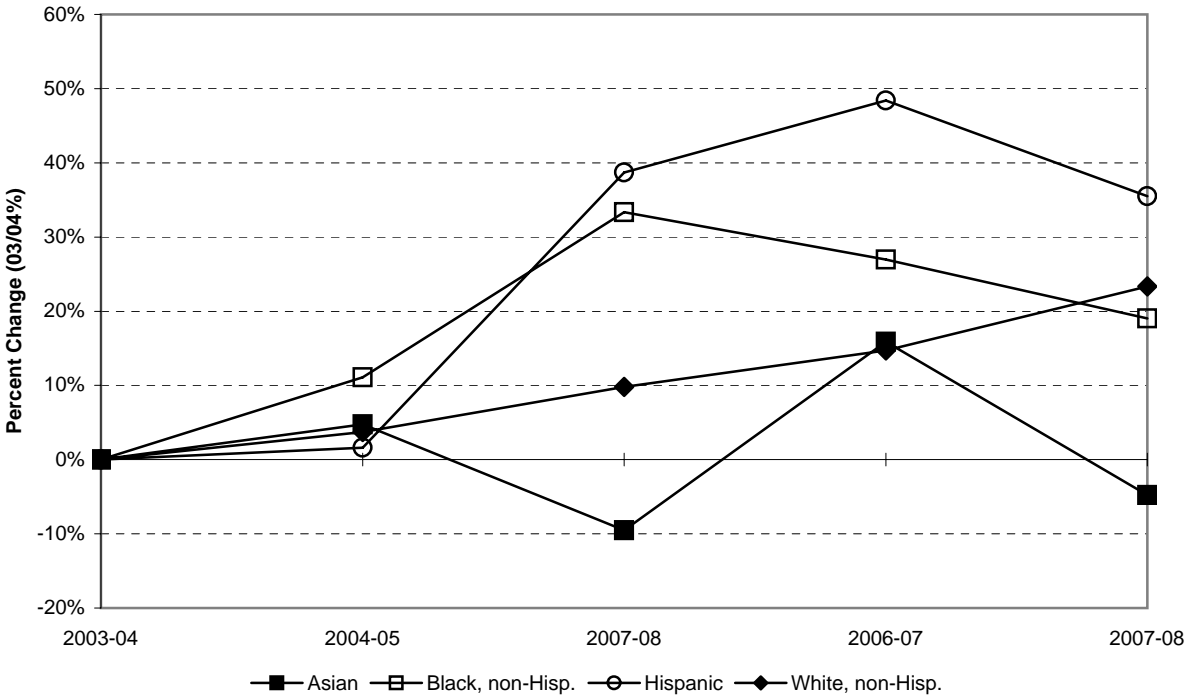
DEGREES AWARDED BY INITIAL ADMISSIONS TYPE, 2003-04 TO 2007-08

Bachelor's	2003-04		2004-05		2005-06		2006-07		2007-08		Pct. Change 03/04 to 07/08	Pct. Change 06/07 to 07/08
	No.	Pct.	No.	Pct.	No.	Pct.	No.	Pct.	No.	Pct.		
Regular	442	43.8%	450	43.0%	486	44.1%	565	46.8%	587	47.6%	32.8%	3.9%
EOF non-Transfer	34	3.4%	41	3.9%	41	3.7%	53	4.4%	46	3.7%	35.3%	-13.2%
EOF Transfer	10	1.0%	9	0.9%	9	0.8%	13	1.1%	7	0.6%	-30.0%	-46.2%
Special	35	3.5%	39	3.7%	46	4.2%	42	3.5%	55	4.5%	57.1%	31.0%
Transfer	489	48.4%	507	48.5%	521	47.2%	534	44.2%	539	43.7%	10.2%	0.9%
Total	1,010		1,046		1,103		1,207		1,234		22.2%	2.2%

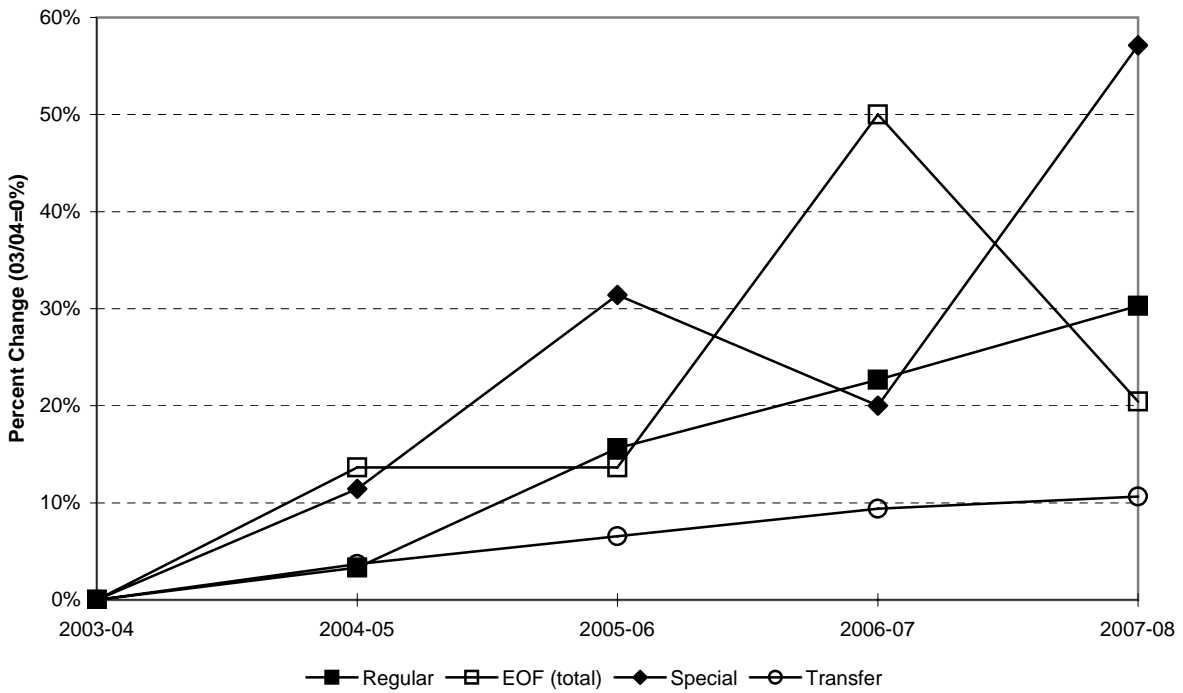
Graduate	2003-04		2004-05		2005-06		2006-07		2007-08		Pct. Change 03/04 to 07/08	Pct. Change 06/07 to 07/08
	No.	Pct.	No.	Pct.	No.	Pct.	No.	Pct.	No.	Pct.		
Regular	96	100.0%	106	100.0%	136	100.0%	95	99.0%	114	98.3%	18.8%	20.0%
EOF non-Transfer	0	0.0%	0	0.0%	0	0.0%	0	0.0%	0	0.0%	N/A	N/A
EOF Transfer	0	0.0%	0	0.0%	0	0.0%	0	0.0%	0	0.0%	N/A	N/A
Special	0	0.0%	0	0.0%	0	0.0%	0	0.0%	0	0.0%	N/A	N/A
Transfer	0	0.0%	0	0.0%	0	0.0%	1	1.0%	2	1.7%	N/A	100.0%
Total	96		106		136		96		116		20.8%	20.8%

Total	2003-04		2004-05		2005-06		2006-07		2007-08		Pct. Change 03/04 to 07/08	Pct. Change 06/07 to 07/08
	No.	Pct.	No.	Pct.	No.	Pct.	No.	Pct.	No.	Pct.		
Regular	538	48.6%	556	48.3%	622	50.2%	660	50.7%	701	51.9%	30.3%	6.2%
EOF non-Transfer	34	3.1%	41	3.6%	41	3.3%	53	4.1%	46	3.4%	35.3%	-13.2%
EOF Transfer	10	0.9%	9	0.8%	9	0.7%	13	1.0%	7	0.5%	-30.0%	-46.2%
Special	35	3.2%	39	3.4%	46	3.7%	42	3.2%	55	4.1%	57.1%	31.0%
Transfer	489	44.2%	507	44.0%	521	42.1%	535	41.1%	541	40.1%	10.6%	1.1%
Total	1,106		1,152		1,239		1,303		1,350		22.1%	3.6%

CUMULATIVE PERCENT CHANGE IN DEGREES AWARDED BY ETHNICITY



CUMULATIVE PCT. CHANGE IN DEGREES AWARDED BY INITIAL ADMIT TYPE



DEGREES AWARDED BY ETHNICITY AND CITIZENSHIP, 2003-04 TO 2007-08

Bachelor's	2003-04		2004-05		2005-06		2006-07		2007-08		Pct. Change 03/04 to 07/08	Pct. Change 06/07 to 07/08
	No.	Pct.	No.	Pct.	No.	Pct.	No.	Pct.	No.	Pct.		
American Indian/Nat. Al.	1	0.1%	2	0.2%	4	0.4%	6	0.5%	0	0.0%	-100.0%	-100.0%
Asian/Pacific Islander	37	3.7%	46	4.4%	43	3.9%	55	4.6%	50	4.1%	35.1%	-9.1%
Black, non-Hispanic	57	5.6%	59	5.6%	71	6.4%	73	6.0%	59	4.8%	3.5%	-19.2%
Hispanic	59	5.8%	59	5.6%	79	7.2%	88	7.3%	82	6.6%	39.0%	-6.8%
White, non-Hispanic	815	80.7%	830	79.3%	863	78.2%	950	78.7%	1,010	81.8%	23.9%	6.3%
Nonresident Alien	41	4.1%	50	4.8%	43	3.9%	35	2.9%	33	2.7%	-19.5%	-5.7%
Total	1,010		1,046		1,103		1,207		1,234		22.2%	2.2%

Graduate	2003-04		2004-05		2005-06		2006-07		2007-08		Pct. Change 03/04 to 07/08	Pct. Change 06/07 to 07/08
	No.	Pct.	No.	Pct.	No.	Pct.	No.	Pct.	No.	Pct.		
American Indian/Nat. Al.	0	0.0%	0	0.0%	1	0.7%	0	0.0%	0	0.0%	N/A	N/A
Asian/Pacific Islander	7	7.3%	1	0.9%	0	0.0%	4	4.2%	3	2.6%	-57.1%	-25.0%
Black, non-Hispanic	2	2.1%	3	2.8%	6	4.4%	3	3.1%	6	5.2%	200.0%	100.0%
Hispanic	1	1.0%	3	2.8%	5	3.7%	3	3.1%	1	0.9%	0.0%	-66.7%
White, non-Hispanic	82	85.4%	95	89.6%	122	89.7%	86	89.6%	105	90.5%	28.0%	22.1%
Nonresident Alien	4	4.2%	4	3.8%	2	1.5%	0	0.0%	1	0.9%	-75.0%	N/A
Total	96		106		136		96		116		20.8%	20.8%

Total	2003-04		2004-05		2005-06		2006-07		2007-08		Pct. Change 03/04 to 07/08	Pct. Change 06/07 to 07/08
	No.	Pct.	No.	Pct.	No.	Pct.	No.	Pct.	No.	Pct.		
American Indian/Nat. Al.	1	0.1%	2	0.2%	5	0.4%	6	0.5%	0	0.0%	-100.0%	-100.0%
Asian/Pacific Islander	44	4.0%	47	4.1%	43	3.5%	59	4.5%	53	3.9%	20.5%	-10.2%
Black, non-Hispanic	59	5.3%	62	5.4%	77	6.2%	76	5.8%	65	4.8%	10.2%	-14.5%
Hispanic	60	5.4%	62	5.4%	84	6.8%	91	7.0%	83	6.1%	38.3%	-8.8%
White, non-Hispanic	897	81.1%	925	80.3%	985	79.5%	1,036	79.5%	1,115	82.6%	24.3%	7.6%
Nonresident Alien	45	4.1%	54	4.7%	45	3.6%	35	2.7%	34	2.5%	-24.4%	-2.9%
Total	1,106		1,152		1,239		1,303		1,350		22.1%	3.6%

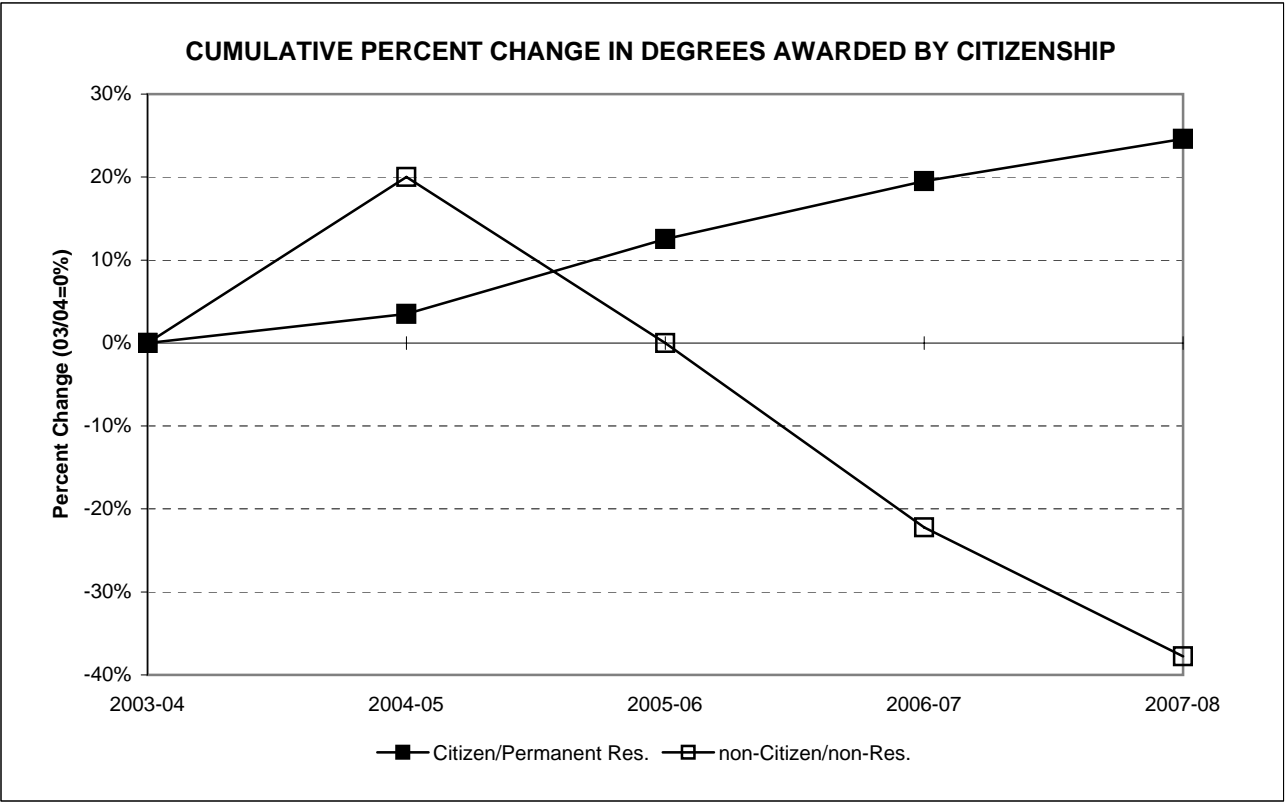
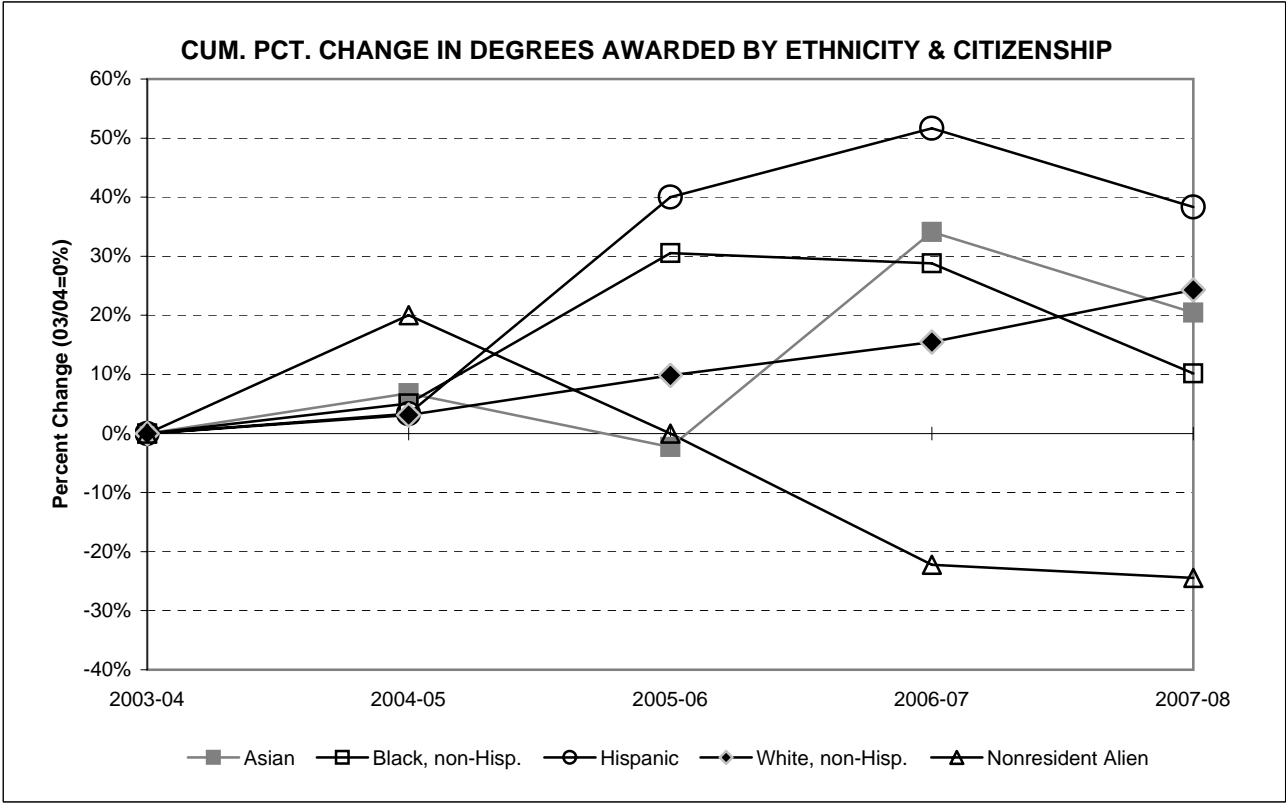


DEGREES AWARDED BY CITIZENSHIP, 2003-04 TO 2007-08

Bachelor's	2003-04		2004-05		2005-06		2006-07		2007-08		Pct. Change 03/04 to 07/08	Pct. Change 06/07 to 07/08
	No.	Pct.	No.	Pct.	No.	Pct.	No.	Pct.	No.	Pct.		
Citizen/Permanent Res.	969	95.9%	996	95.2%	1,060	96.1%	1,172	97.1%	1,207	97.8%	24.6%	3.0%
non-Citizen/non-Res.	41	4.1%	50	4.8%	43	3.9%	35	2.9%	27	2.2%	-34.1%	-22.9%
Total	1,010		1,046		1,103		1,207		1,234		22.2%	2.2%

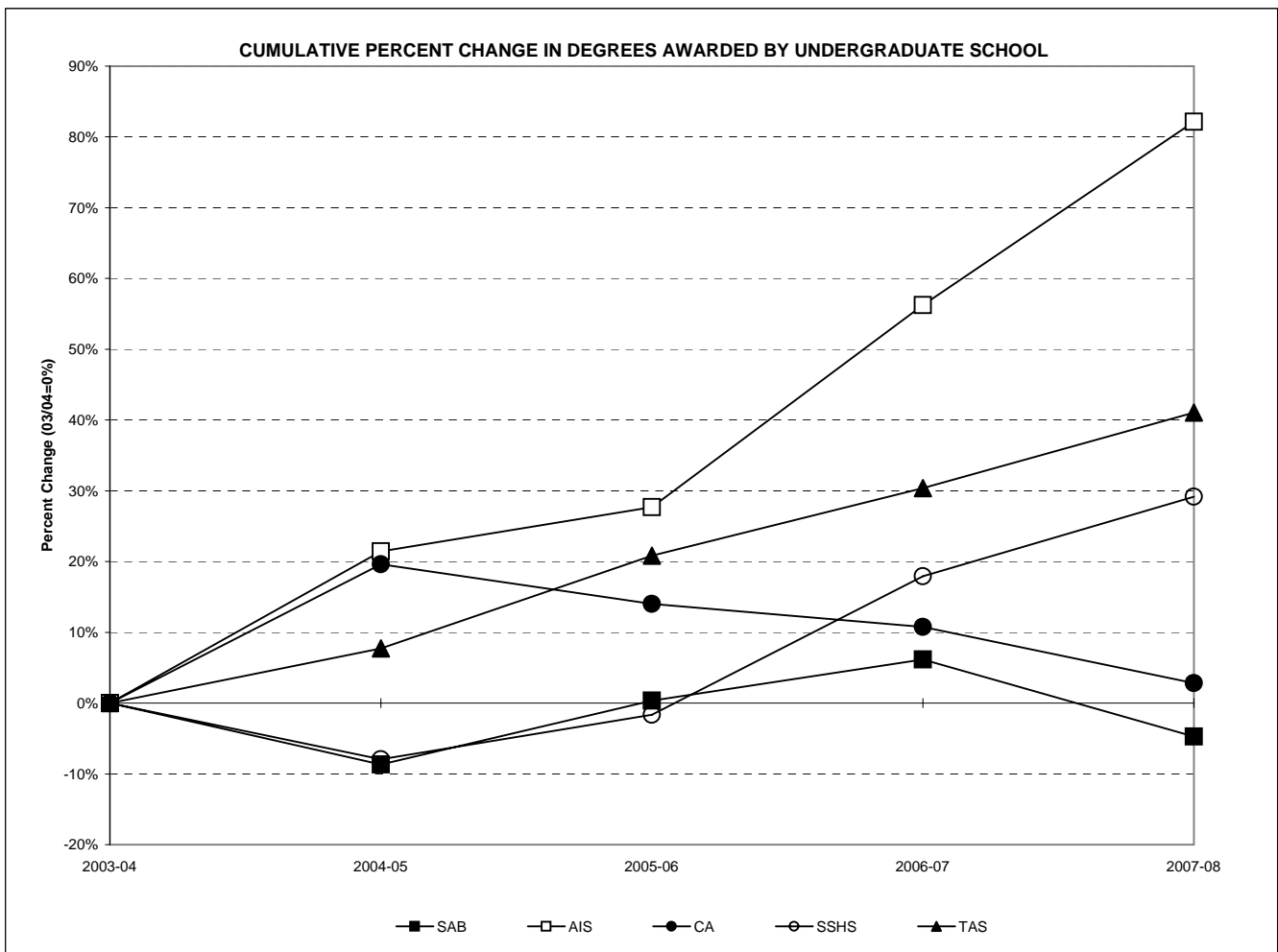
Graduate	2003-04		2004-05		2005-06		2006-07		2007-08		Pct. Change 03/04 to 07/08	Pct. Change 06/07 to 07/08
	No.	Pct.	No.	Pct.	No.	Pct.	No.	Pct.	No.	Pct.		
Citizen/Permanent Res.	92	95.8%	102	96.2%	134	98.5%	96	100.0%	115	99.1%	25.0%	19.8%
non-Citizen/non-Res.	4	4.2%	4	3.8%	2	1.5%	0	0.0%	1	0.9%	-75.0%	N/A
Total	96		106		136		96		116		20.8%	20.8%

Total	2003-04		2004-05		2005-06		2006-07		2007-08		Pct. Change 03/04 to 07/08	Pct. Change 06/07 to 07/08
	No.	Pct.	No.	Pct.	No.	Pct.	No.	Pct.	No.	Pct.		
Citizen/Permanent Res.	1,061	95.9%	1,098	95.3%	1,194	96.4%	1,268	97.3%	1,322	97.9%	24.6%	4.3%
non-Citizen/non-Res.	45	4.1%	54	4.7%	45	3.6%	35	2.7%	28	2.1%	-37.8%	-20.0%
Total	1,106		1,152		1,239		1,303		1,350		22.1%	3.6%



DEGREES AWARDED BY UNDERGRADUATE SCHOOL AND COMBINED GRADUATE PROGRAMS, 2003-04 TO 2007-08

Schools	2003-04		2004-05		2005-06		2006-07		2007-08		Percent Chg. 03/04 to 07/08	Percent Chg. 06/07 to 07/08
	No.	Pct.	No.	Pct.	No.	Pct.	No.	Pct.	No.	Pct.		
Anisfield School of Business	276	25.0%	252	21.9%	277	22.4%	293	22.5%	263	19.5%	-4.7%	-10.2%
American & Int'l. Studies	112	10.1%	136	11.8%	143	11.5%	175	13.4%	204	15.1%	82.1%	16.6%
Contemporary Arts	214	19.3%	256	22.2%	244	19.7%	237	18.2%	220	16.3%	2.8%	-7.2%
Soc. Science & Human Services	240	21.7%	221	19.2%	236	19.0%	283	21.7%	310	23.0%	29.2%	9.5%
Theoretical & Applied Science	168	15.2%	181	15.7%	203	16.4%	219	16.8%	237	17.6%	41.1%	8.2%
Graduate Programs	96	8.7%	106	9.2%	136	11.0%	96	7.4%	116	8.6%	20.8%	20.8%
Total	1,106		1,152		1,239		1,303		1,350		22.1%	3.6%



DEGREES AWARDED BY SCHOOL AND MAJOR (WITH GRADUATE PROGRAMS), 2003-04 TO 2007-08

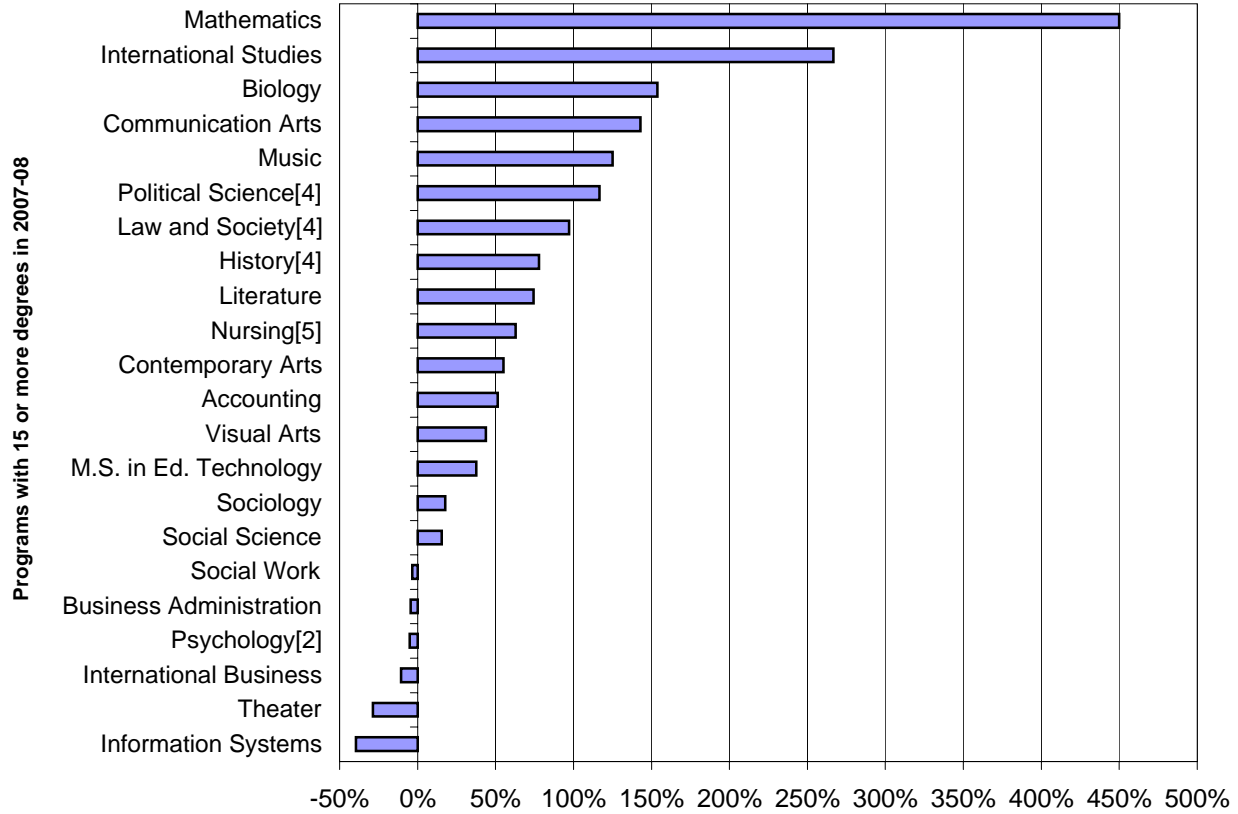
Majors/Programs	2003-04		2004-05		2005-06		2006-07		2007-08		Percent Chg. 03/04 to 07/08	Percent Chg. 06/07 to 07/08
	No.	Pct.	No.	Pct.	No.	Pct.	No.	Pct.	No.	Pct.		
Accounting	35	3.2%	41	3.6%	73	5.9%	74	5.7%	53	3.9%	51.4%	-28.4%
Business Administration	159	14.4%	136	11.8%	141	11.4%	165	12.7%	152	11.3%	-4.4%	-7.9%
Economics	15	1.4%	8	0.7%	8	0.6%	20	1.5%	12	0.9%	-20.0%	-40.0%
Information Systems	48	4.3%	41	3.6%	38	3.1%	17	1.3%	29	2.1%	-39.6%	70.6%
International Business	19	1.7%	26	2.3%	17	1.4%	17	1.3%	17	1.3%	-10.5%	0.0%
Sub-Total: ASB	276	25.0%	252	21.9%	277	22.4%	293	22.5%	263	19.5%	-4.7%	-10.2%
American Studies	7	0.6%	3	0.3%	5	0.4%	11	0.8%	6	0.4%	-14.3%	-45.5%
History	34	3.1%	28	2.4%	36	2.9%	52	4.0%	64	4.7%	88.2%	23.1%
International Studies	6	0.5%	10	0.9%	12	1.0%	12	0.9%	22	1.6%	266.7%	83.3%
Law and Society	6	0.5%	11	1.0%	9	0.7%	2	0.2%	1	0.1%	-83.3%	-50.0%
Literature	47	4.2%	70	6.1%	49	4.0%	68	5.2%	82	6.1%	74.5%	20.6%
Political Science	12	1.1%	14	1.2%	27	2.2%	25	1.9%	26	1.9%	116.7%	4.0%
Spanish Language Studies	--	--	--	--	5	0.4%	5	0.4%	3	0.2%	N/A	-40.0%
Sub-Total: AIS	112	10.1%	136	11.8%	143	11.5%	175	13.4%	204	15.1%	82.1%	16.6%
Communication Arts	146	13.2%	165	14.3%	171	13.8%	139	10.7%	133	9.9%	-8.9%	-4.3%
Contemporary Arts	20	1.8%	18	1.6%	21	1.7%	35	2.7%	31	2.3%	55.0%	-11.4%
Fine Arts ^[1]	3	0.3%	7	0.6%	1	0.1%	--	0.0%	--	0.0%	N/A	N/A
Music	8	0.7%	11	1.0%	10	0.8%	20	1.5%	18	1.3%	125.0%	-10.0%
Theater	21	1.9%	19	1.6%	15	1.2%	8	0.6%	15	1.1%	-28.6%	87.5%
Visual Arts	16	1.4%	36	3.1%	26	2.1%	35	2.7%	23	1.7%	43.8%	-34.3%
Sub-Total: CA	214	19.3%	256	22.2%	244	19.7%	237	18.2%	220	16.3%	2.8%	-7.2%
Economics ^[2]	1	0.1%	2	0.2%	2	0.2%	--	0.0%	--	0.0%	N/A	N/A
Environmental Studies	0	0.0%	3	0.3%	0	0.0%	16	1.2%	11	0.8%	#DIV/0!	N/A
History ^[2]	2	0.2%	1	0.1%	1	0.1%	--	0.0%	--	0.0%	N/A	N/A
Law and Society	29	2.6%	38	3.3%	41	3.3%	53	4.1%	68	5.0%	134.5%	28.3%
Psychology	148	13.4%	136	11.8%	126	10.2%	159	12.2%	167	12.4%	12.8%	5.0%
Social Science	13	1.2%	8	0.7%	12	1.0%	14	1.1%	15	1.1%	15.4%	7.1%
Social Work	30	2.7%	21	1.8%	30	2.4%	24	1.8%	29	2.1%	-3.3%	20.8%
Sociology	17	1.5%	12	1.0%	24	1.9%	17	1.3%	20	1.5%	17.6%	17.6%
Sub-Total: SSHS	240	21.7%	221	19.2%	236	19.0%	283	21.7%	310	23.0%	29.2%	9.5%
Allied Health	--	0.0%	--	0.0%	--	0.0%	--	0.0%	1	0.1%	N/A	N/A
Biochemistry	4	0.4%	3	0.3%	3	0.2%	6	0.5%	9	0.7%	125.0%	50.0%
Bioinformatics	1	0.1%	2	0.2%	1	0.1%	4	0.3%	6	0.4%	N/A	50.0%
Biology	26	2.4%	25	2.2%	40	3.2%	60	4.6%	66	4.9%	153.8%	10.0%
Chemistry	2	0.2%	4	0.3%	2	0.2%	5	0.4%	3	0.2%	50.0%	-40.0%
Computer Science	15	1.4%	25	2.2%	17	1.4%	18	1.4%	14	1.0%	-6.7%	-22.2%
Environmental Science	3	0.3%	2	0.2%	5	0.4%	4	0.3%	6	0.4%	100.0%	50.0%
Environmental Studies	21	1.9%	16	1.4%	13	1.0%	1	0.1%	2	0.1%	-90.5%	100.0%
Integrated Science Studies	--	--	1	0.1%	0	0.0%	3	0.0%	3	0.0%	N/A	N/A
Mathematics	4	0.4%	8	0.7%	10	0.8%	17	1.3%	22	1.6%	450.0%	29.4%
Nursing	62	5.6%	73	6.3%	65	5.2%	89	6.8%	101	7.5%	62.9%	13.5%
Physics	2	0.2%	1	0.1%	6	0.5%	4	0.3%	4	0.3%	100.0%	0.0%
Psychology ^[3]	28	2.5%	21	1.8%	41	3.3%	8	0.6%	--	0.0%	-100.0%	-100.0%
Sub-Total: TAS	168	15.2%	181	15.7%	203	16.4%	219	16.8%	237	17.6%	41.1%	8.2%
M.A. in Liberal Studies	9	0.8%	4	0.3%	11	0.9%	10	0.8%	4	0.3%	-55.6%	-60.0%
M. in Business Admin.	26	2.4%	19	1.6%	14	1.1%	10	0.8%	6	0.4%	-76.9%	-40.0%
M.S. in Educational Tech.	61	5.5%	79	6.9%	101	8.2%	66	5.1%	84	6.2%	37.7%	27.3%
M.S. in Nursing	--	--	4	0.3%	10	0.8%	10	0.8%	22	1.6%	N/A	120.0%
Sub-Total: Graduate	96	8.7%	106	9.2%	136	11.0%	96	7.4%	116	8.6%	20.8%	20.8%
Total	1,106		1,152		1,239		1,303		1,350		22.1%	3.6%

[1] Fine Arts is no longer offered as a major.
 [2] Economics, and History, are no longer offered in the S.S.H.S..
 [3] Psychology is no longer offered in TAS.

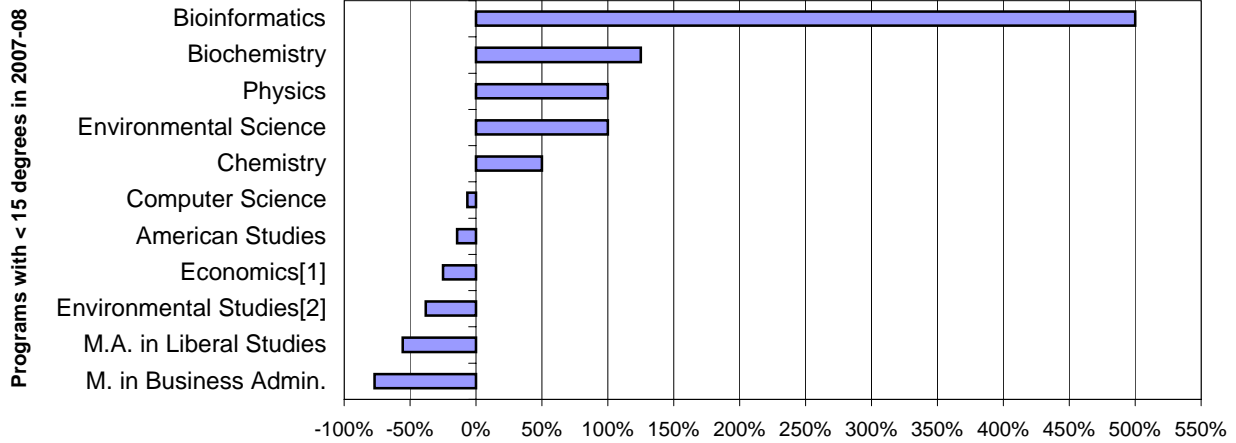
DEGREES AWARDED BY MAJOR (WITH GRADUATE PROGRAMS), 2003-04 TO 2007-08

Major/Program	2003-04		2004-05		2005-06		2006-07		2007-08		Percent	Percent
	No.	Pct.	No.	Pct.	No.	Pct.	No.	Pct.	No.	Pct.	Chg. 02/03 to 06/07	Chg. 05/06 to 06/07
Accounting	35	3.2%	41	3.6%	73	5.9%	74	5.7%	53	3.9%	51.4%	-28.4%
Allied health	--	--	--	--	--	--	--	--	1	0.1%	N/A	N/A
American Studies	7	0.6%	3	0.3%	5	0.4%	11	0.8%	6	0.4%	-14.3%	-45.5%
Biochemistry	4	0.4%	3	0.3%	3	0.2%	6	0.5%	9	0.7%	125.0%	50.0%
Bioinformatics	1	0.1%	2	0.2%	1	0.1%	4	0.3%	6	0.4%	500.0%	50.0%
Biology	26	2.4%	25	2.2%	40	3.2%	60	4.6%	66	4.9%	153.8%	10.0%
Business Administration	159	14.4%	136	11.8%	141	11.4%	165	12.7%	152	11.3%	-4.4%	-7.9%
Chemistry	2	0.2%	4	0.3%	2	0.2%	5	0.4%	3	0.2%	50.0%	-40.0%
Communication Arts	146	13.2%	165	14.3%	171	13.8%	139	10.7%	133	9.9%	143.0%	-4.3%
Computer Science	15	1.4%	25	2.2%	17	1.4%	18	1.4%	14	1.0%	-6.7%	-22.2%
Contemporary Arts	20	1.8%	18	1.6%	21	1.7%	35	2.7%	31	2.3%	55.0%	-11.4%
Economics[1]	16	1.4%	10	0.9%	10	0.8%	20	1.5%	12	0.9%	-25.0%	-40.0%
Environmental Science	3	0.3%	2	0.2%	5	0.4%	4	0.3%	6	0.4%	100.0%	50.0%
Environmental Studies[2]	21	1.9%	19	1.6%	13	1.0%	17	1.3%	13	1.0%	-38.1%	-23.5%
Fine Arts[3]	3	0.3%	7	0.6%	1	0.1%	--	0.0%	--	0.0%	N/A	N/A
History[4]	36	3.3%	29	2.5%	37	3.0%	52	4.0%	64	4.7%	77.8%	23.1%
Information Systems	48	4.3%	41	3.6%	38	3.1%	17	1.3%	29	2.1%	-39.6%	70.6%
Integrated Science	--	--	1	0.1%	0	0.0%	3	0.2%	3	0.2%	N/A	0.0%
International Business	19	1.7%	26	2.3%	17	1.4%	17	1.3%	17	1.3%	-10.5%	0.0%
International Studies	6	0.5%	10	0.9%	12	1.0%	12	0.9%	22	1.6%	266.7%	83.3%
Law and Society[4]	35	3.2%	49	4.3%	50	4.0%	55	4.2%	69	5.1%	97.1%	25.5%
Literature	47	4.2%	70	6.1%	49	4.0%	68	5.2%	82	6.1%	74.5%	20.6%
M. in Business Admin.	26	2.4%	19	1.6%	14	1.1%	10	0.8%	6	0.4%	-76.9%	-40.0%
M.A. in Liberal Studies	9	0.8%	4	0.3%	11	0.9%	10	0.8%	4	0.3%	-55.6%	-60.0%
M.S. in Ed. Technology	61	5.5%	79	6.9%	101	8.2%	66	5.1%	84	6.2%	37.7%	27.3%
M.S. in Nursing	--	--	4	0.3%	10	0.8%	10	0.8%	22	1.6%	N/A	120.0%
Mathematics	4	0.4%	8	0.7%	10	0.8%	17	1.3%	22	1.6%	450.0%	29.4%
Music	8	0.7%	11	1.0%	10	0.8%	20	1.5%	18	1.3%	125.0%	-10.0%
Nursing[5]	62	5.6%	73	6.3%	65	5.2%	89	6.8%	101	7.5%	62.9%	13.5%
Physics	2	0.2%	1	0.1%	6	0.5%	4	0.3%	4	0.3%	100.0%	0.0%
Political Science[4]	12	1.1%	14	1.2%	27	2.2%	25	1.9%	26	1.9%	116.7%	4.0%
Psychology[2]	176	15.9%	157	13.6%	167	13.5%	167	12.8%	167	12.4%	-5.1%	0.0%
Social Science	13	1.2%	8	0.7%	12	1.0%	14	1.1%	15	1.1%	15.4%	7.1%
Social Work	30	2.7%	21	1.8%	30	2.4%	24	1.8%	29	2.1%	-3.3%	20.8%
Sociology	17	1.5%	12	1.0%	24	1.9%	17	1.3%	20	1.5%	17.6%	17.6%
Spanish Language Studies	--	--	--	--	5	0.4%	5	0.4%	3	0.2%	N/A	-40.0%
Theater	21	1.9%	19	1.6%	15	1.2%	8	0.6%	15	1.1%	-28.6%	87.5%
Visual Arts	16	1.4%	36	3.1%	26	2.1%	35	2.7%	23	1.7%	43.8%	-34.3%
Total	1,106		1,152		1,239		1,303		1,350		22.1%	3.6%

**PCT CHANGE (03/04 TO 07/08) IN DEGREES AWARDED BY
PRIMARY MAJOR**



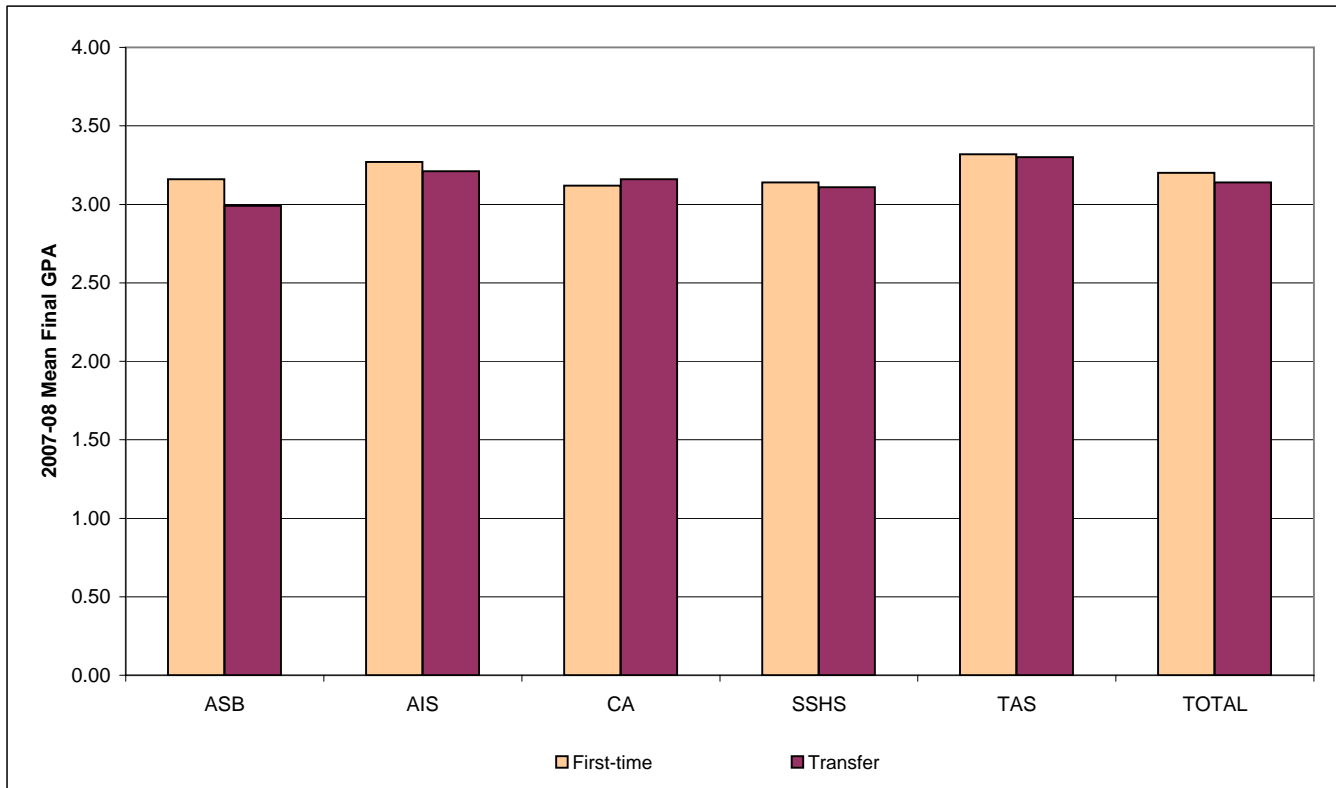
PCT CHANGE (03/04 TO 07/08) IN DEGREES AWARDED BY PRIMARY MAJOR



(footnotes are on page 19)

**MEAN FINAL GRADE POINT AVERAGES BY SCHOOL AND INITIAL ADMISSIONS TYPE
2007-08 DEGREE RECIPIENTS, UNDERGRADUATE ONLY**

School	Mean Final Grade Point Average of First-time Students		Mean Final Grade Point Average of Transfer Students		Overall Mean GPA
	Number	Mean GPA	Number	Mean GPA	
Anisfield School of Business	131	3.16	132	2.99	3.08
American & Int'l. Studies	126	3.27	78	3.21	3.25
Contemporary Arts	140	3.12	80	3.16	3.14
Social Science & Human Services	159	3.14	151	3.11	3.12
Theoretical & Applied Science	132	3.32	105	3.30	3.31
Overall	688	3.20	546	3.14	3.17



NEW UNDERGRADUATE STUDENT COHORT RETENTION RATES

Fall of Entry	Sub-Cohorts*	Original Size	Retained One-Year		Retained Two-Years		Retained Three-Years		Retained Four-Years		Retained Five-Years		Retained Six-Years	
			#	Rate	#	Rate	#	Rate	#	Rate	#	Rate	#	Rate
1997	FTFTF	454	359	79.1%	306	67.4%	294	64.8%	162	35.7%	45	9.9%	22	4.8%
	PTFTF	17	8	47.1%	7	41.2%	4	23.5%	4	23.5%	3	17.6%	2	11.8%
	FTTR	351	269	76.6%	168	47.9%	73	20.8%	29	8.3%	12	3.4%	12	3.4%
	PTTR	208	139	66.8%	104	50.0%	69	33.2%	44	21.2%	31	14.9%	22	10.6%
	Total	1,030	775	75.2%	585	56.8%	440	42.7%	239	23.2%	91	8.8%	58	5.6%
1998	FTFTF	472	392	83.1%	353	74.8%	321	68.0%	167	35.4%	47	10.0%	22	4.7%
	PTFTF	8	4	50.0%	3	37.5%	2	25.0%	0	0.0%	0	0.0%	0	0.0%
	FTTR	364	274	75.3%	169	46.4%	88	24.2%	37	10.2%	15	4.1%	8	2.2%
	PTTR	152	93	61.2%	74	48.7%	53	34.9%	37	24.3%	27	17.8%	10	6.6%
	Total	1,052	806	76.6%	624	59.3%	491	46.7%	220	20.9%	84	8.0%	36	3.4%
2000	FTFTF	638	542	85.0%	490	76.8%	459	71.9%	187	29.3%	31	4.9%	15	2.4%
	PTFTF	6	4	66.7%	4	66.7%	4	66.7%	4	66.7%	2	33.3%	2	33.3%
	FTTR	369	276	74.8%	184	49.9%	75	20.3%	27	7.3%	8	2.2%	9	2.4%
	PTTR	150	84	56.0%	65	43.3%	44	29.3%	29	19.3%	19	12.7%	14	9.3%
	Total	1,163	906	77.9%	743	63.9%	582	50.0%	247	21.2%	60	5.2%	40	3.4%
2001	FTFTF	628	525	83.6%	468	74.5%	446	71.0%	140	22.3%	20	3.2%	7	1.1%
	PTFTF	5	2	40.0%	2	40.0%	2	40.0%	2	40.0%	1	20.0%	0	0.0%
	FTTR	364	291	79.9%	190	52.2%	70	19.2%	26	7.1%	15	4.1%	9	2.5%
	PTTR	141	92	65.2%	73	51.8%	42	29.8%	30	21.3%	14	9.9%	10	7.1%
	Total	1,138	910	80.0%	733	64.4%	560	49.2%	198	17.4%	50	4.4%	26	2.3%
2002	FTFTF	684	595	87.0%	536	78.4%	512	74.9%	146	21.3%	34	5.0%	12	1.8%
	PTFTF	3	1	33.3%	1	33.3%	1	33.3%	1	33.3%	1	33.3%	0	0.0%
	FTTR	433	338	78.1%	221	51.0%	85	19.6%	23	5.3%	0	0.0%	5	1.2%
	PTTR	135	85	63.0%	59	43.7%	36	26.7%	21	15.6%	10	7.4%	0	0.0%
	Total	1,255	1,019	81.2%	817	65.1%	634	50.5%	191	15.2%	45	3.6%	17	1.4%
2003	FTFTF	725	646	89.1%	578	79.7%	562	77.5%	128	17.7%	28	3.9%	-	-
	PTFTF	0	-	N/A	-	N/A	-	N/A	-	N/A	-	N/A	-	-
	FTTR	378	315	83.3%	209	55.3%	85	22.5%	20	5.3%	13	3.4%	-	-
	PTTR	120	63	52.5%	45	37.5%	21	17.5%	14	11.7%	8	6.7%	-	-
	Total	1,223	1,024	83.7%	832	68.0%	668	54.6%	162	13.2%	49	4.0%	-	-
2004	FTFTF	755	674	89.3%	616	81.6%	579	76.7%	128	17.0%	-	-	-	-
	PTFTF	0	-	N/A	-	N/A	-	N/A	-	N/A	-	-	-	-
	FTTR	398	346	86.9%	213	53.5%	80	20.1%	24	6.0%	-	-	-	-
	PTTR	93	63	67.7%	39	41.9%	23	24.7%	16	17.2%	-	-	-	-
	Total	1,246	1,083	86.9%	868	69.7%	682	54.7%	168	13.5%	-	-	-	-
2005	FTFTF	748	655	87.6%	591	79.0%	559	74.7%	-	-	-	-	-	-
	PTFTF	0	-	N/A	-	N/A	-	N/A	-	-	-	-	-	-
	FTTR	396	316	79.8%	197	49.7%	64	16.2%	-	-	-	-	-	-
	PTTR	76	44	57.9%	37	48.7%	19	25.0%	-	-	-	-	-	-
	Total	1,220	1,015	83.2%	825	67.6%	642	52.6%	-	-	-	-	-	-
2006	FTFTF	813	731	89.9%	669	82.3%	-	-	-	-	-	-	-	-
	PTFTF	1	1	100.0%	1	-	-	-	-	-	-	-	-	-
	FTTR	540	454	84.1%	271	50.2%	-	-	-	-	-	-	-	-
	PTTR	70	41	58.6%	35	50.0%	-	-	-	-	-	-	-	-
	Total	1,424	1,227	86.2%	976	68.5%	-	-	-	-	-	-	-	-
2007	FTFTF	900	791	87.9%	-	-	-	-	-	-	-	-	-	-
	PTFTF	2	0	0.0%	-	-	-	-	-	-	-	-	-	-
	FTTR	549	468	85.2%	-	-	-	-	-	-	-	-	-	-
	PTTR	67	42	62.7%	-	-	-	-	-	-	-	-	-	-
	Total	1,518	1,301	85.7%	-	-	-	-	-	-	-	-	-	-

* FTFTF=full-time, first-time freshmen; PTFTF=part-time, first-time freshmen; FTTR=full-time transfers; and PTTR=part-time transfers.

SIX-YEAR RETENTION BY ETHNICITY FULL-TIME, FIRST-TIME FRESHMEN

Fall of Entry	Sub-Cohorts	Original Size	Retained One-Year		Retained Two-Years		Retained Three-Years		Retained Four-Years		Retained Five-Years		Retained Six-Years	
			#	Rate	#	Rate	#	Rate	#	Rate	#	Rate	#	Rate
1998	Amer. I/Nat.AI.	2	2	100.0%	2	100.0%	2	100.0%	1	50.0%	0	0.0%	1	50.0%
	Asian/Pac Is.	27	23	85.2%	22	81.5%	20	74.1%	9	33.3%	2	7.4%	1	3.7%
	Black, Non-Hisp.	30	26	86.7%	21	70.0%	19	63.3%	8	26.7%	4	13.3%	1	3.3%
	Hispanic	63	51	81.0%	44	69.8%	40	63.5%	27	42.9%	5	7.9%	0	0.0%
	White, non Hisp.	350	290	82.9%	264	75.4%	240	68.6%	122	34.9%	36	10.3%	19	5.4%
	Total	472	392	83.1%	353	74.8%	321	68.0%	167	35.4%	47	10.0%	22	4.7%
1999	Amer. I/Nat.AI.	0	0	0.0%	0	0.0%	0	0.0%	0	0.0%	0	0.0%	0	0.0%
	Asian/Pac Is.	26	23	88.5%	22	84.6%	19	73.1%	9	34.6%	2	7.7%	1	3.8%
	Black, Non-Hisp.	56	47	83.9%	40	71.4%	37	66.1%	14	25.0%	5	8.9%	3	5.4%
	Hispanic	50	42	84.0%	32	64.0%	30	60.0%	17	34.0%	4	8.0%	0	0.0%
	White, non Hisp.	396	323	81.6%	284	71.7%	262	66.2%	106	26.8%	31	7.8%	14	3.5%
	Total	528	435	82.4%	378	71.6%	348	65.9%	146	27.7%	42	8.0%	18	3.4%
2000	Amer. I/Nat.AI.	2	2	100.0%	2	100.0%	2	100.0%	6	0.0%	1	0.0%	0	0.0%
	Asian/Pac Is.	31	25	80.6%	23	74.2%	17	54.8%	14	45.2%	5	16.1%	2	6.5%
	Black, Non-Hisp.	49	41	83.7%	38	77.6%	31	63.3%	2	4.1%	2	4.1%	1	2.0%
	Hispanic	53	45	84.9%	40	75.5%	34	64.2%	20	37.7%	4	7.5%	2	3.8%
	White, non Hisp.	503	429	85.3%	387	76.9%	375	74.6%	145	28.8%	19	3.8%	10	2.0%
	Total	638	542	85.0%	490	76.8%	459	71.9%	187	29.3%	31	4.9%	15	2.4%
2001	Amer. I/Nat.AI.	0	0	0.0%	0	0.0%	0	0.0%	0	0.0%	0	0.0%	0	0.0%
	Asian/Pac Is.	35	32	91.4%	27	77.1%	23	65.7%	4	11.4%	2	5.7%	0	0.0%
	Black, Non-Hisp.	44	35	79.5%	31	70.5%	32	72.7%	12	27.3%	2	4.5%	2	4.5%
	Hispanic	58	51	87.9%	46	79.3%	42	72.4%	17	29.3%	2	3.4%	0	0.0%
	White, non Hisp.	491	407	82.9%	364	74.1%	349	71.1%	107	21.8%	14	2.9%	5	1.0%
	Total	628	525	83.6%	468	74.5%	446	71.0%	140	22.3%	20	3.2%	7	1.1%
2002	Amer. I/Nat.AI.	3	3	100.0%	1	0.0%	1	0.0%	0	0.0%	0	0.0%	0	0.0%
	Asian/Pac Is.	23	20	87.0%	17	73.9%	14	60.9%	3	13.0%	1	4.3%	0	0.0%
	Black, Non-Hisp.	58	51	87.9%	48	82.8%	47	81.0%	17	29.3%	7	12.1%	1	1.7%
	Hispanic	69	56	81.2%	47	68.1%	42	60.9%	15	21.7%	2	2.9%	1	1.4%
	White, non Hisp.	531	465	87.6%	423	79.7%	408	76.8%	111	20.9%	24	4.5%	10	1.9%
	Total	684	595	87.0%	536	78.4%	512	74.9%	146	21.3%	34	5.0%	12	1.8%
2003	Amer. I/Nat.AI.	3	3	100.0%	3	0.0%	3	0.0%	1	0.0%	0	0.0%	-	-
	Asian/Pac Is.	25	24	96.0%	20	80.0%	19	76.0%	3	12.0%	0	0.0%	-	-
	Black, Non-Hisp.	53	47	88.7%	42	79.2%	40	75.5%	10	18.9%	1	1.9%	-	-
	Hispanic	58	50	86.2%	41	70.7%	40	69.0%	10	17.2%	1	1.7%	-	-
	White, non Hisp.	586	522	89.1%	472	80.5%	460	78.5%	104	17.7%	26	4.4%	-	-
	Total	725	646	89.1%	578	79.7%	562	77.5%	128	17.7%	28	3.9%	-	-
2004	Amer. I/Nat.AI.	1	0	0.0%	0	0.0%	0	0.0%	0	0.0%	-	-	-	-
	Asian/Pac Is.	40	37	92.5%	28	70.0%	26	65.0%	4	10.0%	-	-	-	-
	Black, Non-Hisp.	48	42	87.5%	33	68.8%	31	64.6%	13	27.1%	-	-	-	-
	Hispanic	64	58	90.6%	51	79.7%	46	71.9%	15	23.4%	-	-	-	-
	White, non Hisp.	602	537	89.2%	504	83.7%	476	79.1%	96	15.9%	-	-	-	-
	Total	755	674	89.3%	616	81.6%	579	76.7%	128	17.0%	-	-	-	-
2005	Amer. I/Nat.AI.	2	2	100.0%	2	0.0%	2	0.0%	-	-	-	-	-	-
	Asian/Pac Is.	32	28	87.5%	25	78.1%	25	78.1%	-	-	-	-	-	-
	Black, Non-Hisp.	67	56	83.6%	45	67.2%	40	59.7%	-	-	-	-	-	-
	Hispanic	67	58	86.6%	49	73.1%	47	70.1%	-	-	-	-	-	-
	White, non Hisp.	580	511	88.1%	470	81.0%	445	76.7%	-	-	-	-	-	-
	Total	748	655	87.6%	591	79.0%	559	74.7%	-	-	-	-	-	-
2006	Amer. I/Nat.AI.	4	4	100.0%	3	0.0%	-	-	-	-	-	-	-	-
	Asian/Pac Is.	35	30	85.7%	28	80.0%	-	-	-	-	-	-	-	-
	Black, Non-Hisp.	71	59	83.1%	53	74.6%	-	-	-	-	-	-	-	-
	Hispanic	91	83	91.2%	69	75.8%	-	-	-	-	-	-	-	-
	White, non Hisp.	613	556	90.7%	517	84.3%	-	-	-	-	-	-	-	-
	Total	814	732	89.9%	670	82.3%	-	-	-	-	-	-	-	-
2007	Amer. I/Nat.AI.	2	2	100.0%	-	-	-	-	-	-	-	-	-	-
	Asian/Pac Is.	44	41	93.2%	-	-	-	-	-	-	-	-	-	-
	Black, Non-Hisp.	67	58	86.6%	-	-	-	-	-	-	-	-	-	-
	Hispanic	79	60	75.9%	-	-	-	-	-	-	-	-	-	-
	White, non Hisp.	710	630	88.7%	-	-	-	-	-	-	-	-	-	-
	Total	902	791	87.7%	-	-	-	-	-	-	-	-	-	-

SIX-YEAR RETENTION BY ADMIT TYPE FOR FULL-TIME, FIRST-TIME FRESHMEN

Fall of Entry	Sub-Cohorts	Original Size	Retained One-Year		Retained Two-Years		Retained Three-Years		Retained Four-Years		Retained Five-Years		Retained Six-Years	
			#	Rate	#	Rate	#	Rate	#	Rate	#	Rate	#	Rate
1997	Regular	340	262	77.1%	220	64.7%	212	62.4%	100	29.4%	31	9.1%	15	4.4%
	EOF	67	60	89.6%	52	77.6%	52	77.6%	35	52.2%	9	13.4%	4	6.0%
	Special	47	37	78.7%	34	72.3%	30	63.8%	27	57.4%	5	10.6%	3	6.4%
	Total	454	359	79.1%	306	67.4%	294	64.8%	162	35.7%	45	9.9%	22	4.8%
1998	Regular	352	295	83.8%	271	77.0%	246	69.9%	124	35.2%	35	9.9%	17	4.8%
	EOF	69	57	82.6%	46	66.7%	42	60.9%	23	33.3%	7	10.1%	1	1.4%
	Special	51	40	78.4%	36	70.6%	33	64.7%	20	39.2%	5	9.8%	4	7.8%
2000	Regular	511	439	85.9%	399	78.1%	380	74.4%	144	28.2%	21	4.1%	13	2.5%
	EOF	64	55	85.9%	50	78.1%	41	64.1%	23	35.9%	3	4.7%	2	3.1%
	Special	63	48	76.2%	41	65.1%	38	60.3%	20	31.7%	7	11.1%	0	0.0%
	Total	638	542	85.0%	490	76.8%	459	71.9%	187	29.3%	31	4.9%	15	2.4%
2001	Regular	497	414	83.3%	370	74.4%	353	71.0%	101	20.3%	16	3.2%	4	0.8%
	EOF	69	60	87.0%	54	78.3%	52	75.4%	24	34.8%	3	4.3%	3	4.3%
	Special	62	51	82.3%	44	71.0%	41	66.1%	15	24.2%	1	1.6%	0	0.0%
	Total	628	525	83.6%	468	74.5%	446	71.0%	140	22.3%	20	3.2%	7	1.1%
2002	Regular	543	485	89.3%	439	80.8%	423	77.9%	111	20.4%	23	4.2%	11	2.0%
	EOF	73	60	82.2%	51	69.9%	46	63.0%	21	28.8%	6	8.2%	1	1.4%
	Special	68	50	73.5%	46	67.6%	43	63.2%	14	20.6%	5	7.4%	0	0.0%
	Total	684	595	87.0%	536	78.4%	512	74.9%	146	21.3%	34	5.0%	12	1.8%
2003	Regular	582	524	90.0%	472	81.1%	460	79.0%	94	16.2%	22	3.8%	-	-
	EOF	70	61	87.1%	47	67.1%	46	65.7%	14	20.0%	3	4.3%	-	-
	Special	73	61	83.6%	59	80.8%	56	76.7%	20	27.4%	3	4.1%	-	-
	Total	725	646	89.1%	578	79.7%	562	77.5%	128	17.7%	28	3.9%	-	-
2004	Regular	610	549	90.0%	509	83.4%	479	78.5%	85	13.9%	-	-	-	-
	EOF	69	63	91.3%	50	72.5%	46	66.7%	23	33.3%	-	-	-	-
	Special	76	62	81.6%	57	75.0%	54	71.1%	20	26.3%	-	-	-	-
	Total	755	674	89.3%	616	81.6%	579	76.7%	128	17.0%	-	-	-	-
2005	Regular	602	530	88.0%	490	81.4%	465	77.2%	-	-	-	-	-	-
	EOF	71	63	88.7%	47	66.2%	44	62.0%	-	-	-	-	-	-
	Special	75	62	82.7%	54	72.0%	50	66.7%	-	-	-	-	-	-
	Total	748	655	87.6%	591	79.0%	559	74.7%	-	-	-	-	-	-
2006	Regular	649	587	90.4%	553	85.2%	-	-	-	-	-	-	-	-
	EOF	85	80	94.1%	61	71.8%	-	-	-	-	-	-	-	-
	Special	80	65	81.3%	56	70.0%	-	-	-	-	-	-	-	-
	Total	814	732	89.9%	670	82.3%	-	-	-	-	-	-	-	-
2007	Regular	701	620	88.4%	-	-	-	-	-	-	-	-	-	-
	EOF	74	61	82.4%	-	-	-	-	-	-	-	-	-	-
	Special	127	110	86.6%	-	-	-	-	-	-	-	-	-	-
	Total	902	791	87.7%	-	-	-	-	-	-	-	-	-	-

NEW UNDERGRADUATE STUDENT COHORT CUMULATIVE GRADUATION RATES

Fall of Entry	Sub-Cohorts*	Original Size	One-Year Cumulative Graduation		Two-Year Cumulative Graduation		Three-Year Cumulative Graduation		Four-Year Cumulative Graduation		Five-Year Cumulative Graduation		Six-Year Cumulative Graduation	
			#	Rate	#	Rate	#	Rate	#	Rate	#	Rate	#	Rate
1997	FTFTF	454	0	0.0%	0	0.0%	1	0.2%	131	28.9%	222	48.9%	244	53.7%
	PTFTF	17	0	0.0%	0	0.0%	0	0.0%	0	0.0%	1	5.9%	1	5.9%
	FTTR	351	2	0.6%	69	19.7%	154	43.9%	195	55.6%	212	60.4%	217	61.8%
	PTTR	208	0	0.0%	6	2.9%	22	10.6%	44	21.2%	55	26.4%	67	32.2%
	Total	1,030	2	0.2%	75	7.3%	177	17.2%	370	35.9%	490	47.6%	529	51.4%
1998	FTFTF	472	0	0.0%	0	0.0%	6	1.3%	170	36.0%	267	56.6%	294	62.3%
	PTFTF	17	0	0.0%	0	0.0%	0	0.0%	1	5.9%	3	17.6%	4	23.5%
	FTTR	351	1	0.3%	70	19.9%	143	40.7%	183	52.1%	200	57.0%	207	59.0%
	PTTR	183	0	0.0%	7	3.8%	25	13.7%	48	26.2%	57	31.1%	64	35.0%
	Total	1,023	1	0.1%	77	7.5%	174	17.0%	402	39.3%	527	51.5%	569	55.6%
1999	FTFTF	528	0	0.0%	1	0.2%	7	1.3%	203	38.4%	288	54.5%	311	59.4%
	PTFTF	8	0	0.0%	0	0.0%	0	0.0%	0	0.0%	0	0.0%	0	0.0%
	FTTR	364	2	0.5%	81	22.3%	159	43.7%	204	56.0%	219	60.2%	225	61.8%
	PTTR	152	0	0.0%	5	3.3%	14	9.2%	32	21.1%	38	25.0%	53	34.9%
	Total	1,052	2	0.2%	87	8.3%	180	17.1%	439	41.7%	545	51.8%	589	56.0%
2000	FTFTF	638	0	0.0%	2	0.3%	10	1.6%	284	44.5%	402	63.0%	419	65.7%
	PTFTF	6	0	0.0%	0	0.0%	0	0.0%	1	16.7%	1	16.7%	1	16.7%
	FTTR	369	3	0.8%	75	20.3%	172	46.6%	216	58.5%	232	62.9%	233	63.1%
	PTTR	150	0	0.0%	4	2.7%	23	15.3%	40	26.7%	50	33.3%	51	34.0%
	Total	1,163	3	0.3%	81	7.0%	205	17.6%	541	46.5%	685	58.9%	704	60.5%
2001	FTFTF	628	0	0.0%	0	0.0%	7	1.1%	304	48.4%	393	62.6%	407	64.8%
	PTFTF	5	0	0.0%	0	0.0%	0	0.0%	0	0.0%	1	20.0%	3	60.0%
	FTTR	364	0	0.0%	78	21.4%	183	50.3%	225	61.8%	236	64.8%	240	65.9%
	PTTR	141	0	0.0%	3	2.1%	21	14.9%	34	24.1%	45	31.9%	54	38.3%
	Total	1,138	0	0.0%	81	7.1%	211	18.5%	563	49.5%	675	59.3%	704	61.9%
2002	FTFTF	684	0	0.0%	0	0.0%	5	0.7%	330	48.2%	459	67.1%	477	69.7%
	PTFTF	3	0	0.0%	0	0.0%	0	0.0%	0	0.0%	0	0.0%	0	0.0%
	FTTR	433	3	0.7%	101	23.3%	221	51.0%	272	62.8%	288	66.5%	292	67.4%
	PTTR	135	0	0.0%	6	4.4%	25	18.5%	36	26.7%	46	34.1%	52	38.5%
	Total	1,255	3	0.2%	107	8.5%	251	20.0%	638	50.8%	793	63.2%	821	65.4%
2003	FTFTF	725	0	0.0%	0	0.0%	4	0.6%	428	59.0%	528	72.8%	-	-
	PTFTF	0	0	0.0%	0	0.0%	0	0.0%	0	0.0%	0	0.0%	-	-
	FTTR	378	2	0.5%	84	22.2%	190	50.3%	265	70.1%	275	72.8%	-	-
	PTTR	120	0	0.0%	7	5.8%	22	18.3%	32	26.7%	40	33.3%	-	-
	Total	1,223	2	0.2%	91	7.4%	216	17.7%	725	59.3%	843	68.9%	-	-
2004	FTFTF	755	0	0.0%	0	0.0%	7	0.9%	486	64.4%	-	-	-	-
	PTFTF	0	0	0.0%	0	0.0%	0	0.0%	0	0.0%	-	-	-	-
	FTTR	398	2	0.5%	90	22.6%	236	59.3%	285	71.6%	-	-	-	-
	PTTR	93	0	0.0%	6	6.5%	20	21.5%	27	29.0%	-	-	-	-
	Total	1,246	2	0.2%	96	7.7%	263	21.1%	798	64.0%	-	-	-	-
2005	FTFTF	748	0	0.0%	2	0.3%	12	1.6%	-	-	-	-	-	-
	PTFTF	0	0	0.0%	0	0.0%	0	0.0%	-	-	-	-	-	-
	FTTR	396	3	0.8%	92	23.2%	219	55.3%	-	-	-	-	-	-
	PTTR	76	0	0.0%	4	5.3%	19	25.0%	-	-	-	-	-	-
	Total	1,220	3	0.2%	98	8.0%	250	20.5%	-	-	-	-	-	-
2006	FTFTF	813	0	0.0%	0	0.0%	-	-	-	-	-	-	-	-
	PTFTF	1	0	0.0%	0	0.0%	-	-	-	-	-	-	-	-
	FTTR	540	1	0.2%	146	27.0%	-	-	-	-	-	-	-	-
	PTTR	70	0	0.0%	1	1.4%	-	-	-	-	-	-	-	-
	Total	1,424	1	0.1%	147	10.3%	-	-	-	-	-	-	-	-
2007	FTFTF	610	0	0.0%	-	-	-	-	-	-	-	-	-	-
	PTFTF	69	0	0.0%	-	-	-	-	-	-	-	-	-	-
	FTTR	76	1	1.3%	-	-	-	-	-	-	-	-	-	-
	PTTR	67	0	0.0%	-	-	-	-	-	-	-	-	-	-
	Total	822	1	0.1%	-	-	-	-	-	-	-	-	-	-

FULL-TIME, FIRST-TIME FRESHMEN COHORT CUMULATIVE GRADUATION RATES

Fall of Entry	Sub-Cohorts	Original Size	One-Year Cumulative Graduation		Two-Year Cumulative Graduation		Three-Year Cumulative Graduation		Four-Year Cumulative Graduation		Five-Year Cumulative Graduation		Six-Year Cumulative Graduation	
			Count	Rate	Count	Rate	Count	Rate	Count	Rate	Count	Rate	Count	Rate
1997	Amer. I/Nat.Al.	1	0	0.0%	1	100.0%	0	0.0%	0	0.0%	0	0.0%	0	0.0%
	Asian/Pac Is.	30	0	0.0%	0	0.0%	0	0.0%	10	33.3%	17	56.7%	17	56.7%
	Black, Non-Hisp.	51	0	0.0%	0	0.0%	0	0.0%	10	19.6%	19	37.3%	23	45.1%
	Hispanic	610	0	0.0%	0	0.0%	0	0.0%	5	0.8%	13	2.1%	15	2.5%
	White, non Hisp.	69	0	0.0%	0	0.0%	1	1.4%	106	153.6%	173	250.7%	189	273.9%
	Total	76	1	1.3%	0	0.0%	1	1.3%	131	172.4%	222	292.1%	244	321.1%
1998	Amer. I/Nat.Al.	2	0	0.0%	0	0.0%	0	0.0%	0	0.0%	1	50.0%	1	50.0%
	Asian/Pac Is.	27	0	0.0%	0	0.0%	1	3.7%	12	44.4%	18	66.7%	19	70.4%
	Black, Non-Hisp.	30	0	0.0%	0	0.0%	0	0.0%	8	26.7%	14	46.7%	16	53.3%
	Hispanic	63	0	0.0%	0	0.0%	0	0.0%	17	27.0%	35	55.6%	40	63.5%
	White, non Hisp.	350	0	0.0%	0	0.0%	5	1.4%	133	38.0%	199	56.9%	218	62.3%
	Total	472	0	0.0%	0	0.0%	6	1.3%	170	36.0%	267	56.6%	294	62.3%
1999	Amer. I/Nat.Al.	0	0	0.0%	0	0.0%	0	0.0%	0	0.0%	0	0.0%	0	0.0%
	Asian/Pac Is.	26	0	0.0%	0	0.0%	0	0.0%	10	38.5%	16	61.5%	18	69.2%
	Black, Non-Hisp.	56	0	0.0%	0	0.0%	0	0.0%	18	32.1%	25	44.6%	26	46.4%
	Hispanic	50	0	0.0%	0	0.0%	0	0.0%	13	26.0%	22	44.0%	25	50.0%
	White, non Hisp.	396	0	0.0%	1	0.3%	7	1.8%	162	40.9%	225	56.8%	242	61.1%
	Total	528	0	0.0%	1	0.2%	7	1.3%	203	38.4%	288	54.5%	311	59.4%
2000	Amer. I/Nat.Al.	2	0	0.0%	0	0.0%	0	0.0%	0	0.0%	0	0.0%	1	50.0%
	Asian/Pac Is.	31	0	0.0%	2	6.5%	4	12.9%	13	41.9%	17	54.8%	18	58.1%
	Black, Non-Hisp.	49	0	0.0%	0	0.0%	2	4.1%	18	36.7%	26	53.1%	27	55.1%
	Hispanic	53	0	0.0%	0	0.0%	1	1.9%	15	28.3%	25	47.2%	28	52.8%
	White, non Hisp.	503	0	0.0%	0	0.0%	3	0.6%	238	47.3%	334	66.4%	345	68.6%
	Total	638	0	0.0%	2	0.3%	10	1.6%	284	44.5%	402	63.0%	419	65.7%
2001	Amer. I/Nat.Al.	0	0	0.0%	0	0.0%	0	0.0%	0	0.0%	0	0.0%	0	0.0%
	Asian/Pac Is.	35	0	0.0%	0	0.0%	1	2.9%	16	45.7%	21	60.0%	21	60.0%
	Black, Non-Hisp.	44	0	0.0%	0	0.0%	0	0.0%	14	31.8%	23	52.3%	25	56.8%
	Hispanic	58	0	0.0%	0	0.0%	1	1.7%	22	37.9%	29	50.0%	32	55.2%
	White, non Hisp.	491	0	0.0%	0	0.0%	5	1.0%	252	51.3%	320	65.2%	329	67.0%
	Total	628	0	0.0%	0	0.0%	7	1.1%	304	48.4%	393	62.6%	407	64.8%
2002	Amer. I/Nat.Al.	3	0	0.0%	0	0.0%	0	0.0%	1	33.3%	1	33.3%	1	0.0%
	Asian/Pac Is.	23	0	0.0%	0	0.0%	1	4.3%	8	34.8%	12	52.2%	12	52.2%
	Black, Non-Hisp.	58	0	0.0%	0	0.0%	0	0.0%	26	44.8%	38	65.5%	42	72.4%
	Hispanic	69	0	0.0%	0	0.0%	0	0.0%	18	26.1%	37	53.6%	37	53.6%
	White, non Hisp.	531	0	0.0%	0	0.0%	4	0.8%	277	52.2%	371	69.9%	385	72.5%
	Total	684	0	0.0%	0	0.0%	5	0.7%	330	48.2%	459	67.1%	477	69.7%
2003	Amer. I/Nat.Al.	3	0	0.0%	0	0.0%	0	0.0%	3	100.0%	3	100.0%	-	-
	Asian/Pac Is.	25	0	0.0%	0	0.0%	0	0.0%	15	60.0%	19	76.0%	-	-
	Black, Non-Hisp.	53	0	0.0%	0	0.0%	0	0.0%	22	41.5%	31	58.5%	-	-
	Hispanic	58	0	0.0%	0	0.0%	1	1.7%	26	44.8%	34	58.6%	-	-
	White, non Hisp.	586	0	0.0%	0	0.0%	3	0.5%	362	61.8%	441	75.3%	-	-
	Total	725	0	0.0%	0	0.0%	4	0.6%	428	59.0%	528	72.8%	-	-
2004	Amer. I/Nat.Al.	1	0	0.0%	0	0.0%	0	0.0%	0	0.0%	-	-	-	-
	Asian/Pac Is.	40	0	0.0%	0	0.0%	1	2.5%	24	60.0%	-	-	-	-
	Black, Non-Hisp.	48	0	0.0%	0	0.0%	0	0.0%	19	39.6%	-	-	-	-
	Hispanic	64	0	0.0%	0	0.0%	0	0.0%	34	53.1%	-	-	-	-
	White, non Hisp.	602	0	0.0%	0	0.0%	6	1.0%	409	67.9%	-	-	-	-
	Total	755	0	0.0%	0	0.0%	7	0.9%	486	64.4%	-	-	-	-
2005	Amer. I/Nat.Al.	2	0	0.0%	0	0.0%	0	0.0%	-	-	-	-	-	-
	Asian/Pac Is.	32	0	0.0%	0	0.0%	0	0.0%	-	-	-	-	-	-
	Black, Non-Hisp.	67	0	0.0%	0	0.0%	0	0.0%	-	-	-	-	-	-
	Hispanic	67	0	0.0%	0	0.0%	0	0.0%	-	-	-	-	-	-
	White, non Hisp.	580	0	0.0%	2	0.3%	12	2.1%	-	-	-	-	-	-
	Total	748	0	0.0%	2	0.3%	12	1.6%	-	-	-	-	-	-
2006	Amer. I/Nat.Al.	4	0	0.0%	0	0.0%	-	-	-	-	-	-	-	-
	Asian/Pac Is.	35	0	0.0%	0	0.0%	-	-	-	-	-	-	-	-
	Black, Non-Hisp.	71	0	0.0%	0	0.0%	-	-	-	-	-	-	-	-
	Hispanic	91	0	0.0%	0	0.0%	-	-	-	-	-	-	-	-
	White, non Hisp.	613	0	0.0%	0	0.0%	-	-	-	-	-	-	-	-
	Total	814	0	0.0%	0	0.0%	-	-	-	-	-	-	-	-
2007	Amer. I/Nat.Al.	4	0	0.0%	-	-	-	-	-	-	-	-	-	-
	Asian/Pac Is.	35	0	0.0%	-	-	-	-	-	-	-	-	-	-
	Black, Non-Hisp.	71	0	0.0%	-	-	-	-	-	-	-	-	-	-
	Hispanic	91	0	0.0%	-	-	-	-	-	-	-	-	-	-
	White, non Hisp.	613	0	0.0%	-	-	-	-	-	-	-	-	-	-
	Total	814	0	0.0%	-	-	-	-	-	-	-	-	-	-

TEN-YEAR CUMULATIVE GRADUATION RATES BY ADMIT TYPE FOR FULL-TIME, FIRST-TIME FRESHMEN

Fall of Entry	Sub-Cohorts	Original Size	Four-Year Cumulative Graduation [1]		Five-Year Cumulative Graduation		Six-Year Cumulative Graduation		Seven-Year Cumulative Graduation		Eight-Year Cumulative Graduation		Nine-Year Cumulative Graduation		Ten-Year Cumulative Graduation	
			#	Rate	#	Rate	#	Rate	#	Rate	#	Rate	#	Rate	#	Rate
1992	Regular	279	71	25.4%	126	45.2%	136	48.7%	139	49.8%	142	50.9%	142	50.9%	142	50.9%
	EOF	98	2	2.0%	16	16.3%	21	21.4%	22	22.4%	22	22.4%	22	22.4%	22	22.4%
	Special	42	4	9.5%	10	23.8%	15	35.7%	16	38.1%	16	38.1%	16	38.1%	16	38.1%
	Total	419	77	18.4%	152	36.3%	172	41.1%	177	42.2%	180	43.0%	180	43.0%	180	43.0%
1993	Regular	240	58	24.2%	105	43.8%	111	46.3%	113	47.1%	113	47.1%	113	47.1%	113	47.1%
	EOF	83	1	1.2%	8	9.6%	13	15.7%	15	18.1%	16	19.3%	16	19.3%	16	19.3%
	Special	39	3	7.7%	14	35.9%	17	43.6%	17	43.6%	17	43.6%	17	43.6%	19	48.7%
	Total	362	62	17.1%	127	35.1%	141	39.0%	145	40.1%	146	40.3%	146	40.3%	148	40.9%
1994	Regular	217	60	27.6%	100	46.1%	111	51.2%	115	53.0%	115	53.0%	117	53.9%	117	53.9%
	EOF	90	6	6.7%	23	25.6%	25	27.8%	26	28.9%	26	28.9%	26	28.9%	26	28.9%
	Special	36	7	19.4%	17	47.2%	19	52.8%	20	55.6%	20	55.6%	20	55.6%	20	55.6%
	Total	343	73	21.3%	140	40.8%	155	45.2%	161	46.9%	161	46.9%	163	47.5%	163	47.5%
1995	Regular	183	52	28.4%	95	51.9%	98	53.6%	99	54.1%	100	54.6%	101	55.2%	101	55.2%
	EOF	97	4	4.1%	17	17.5%	27	27.8%	30	30.9%	32	33.0%	33	34.0%	33	34.0%
	Special	39	11	28.2%	21	53.8%	24	61.5%	24	61.5%	24	61.5%	24	61.5%	24	61.5%
	Total	319	67	21.0%	133	41.7%	149	46.7%	153	48.0%	156	48.9%	158	49.5%	158	49.5%
1996	Regular	296	87	29.4%	155	52.4%	169	57.1%	172	58.1%	173	58.4%	174	58.8%	174	58.8%
	EOF	74	9	12.2%	27	36.5%	32	43.2%	33	44.6%	34	45.9%	34	45.9%	34	45.9%
	Special	43	6	14.0%	23	53.5%	23	53.5%	23	53.5%	23	53.5%	23	53.5%	23	53.5%
	Total	413	102	24.7%	205	49.6%	224	54.2%	228	55.2%	230	55.7%	231	55.9%	231	55.9%
1997	Regular	340	114	33.5%	172	50.6%	186	54.7%	190	55.9%	194	57.1%	196	57.6%	200	58.8%
	EOF	67	11	16.4%	29	43.3%	34	50.7%	36	53.7%	37	55.2%	38	56.7%	38	56.7%
	Special	47	6	12.8%	21	44.7%	24	51.1%	25	53.2%	25	53.2%	26	55.3%	26	55.3%
	Total	454	131	28.9%	222	48.9%	244	53.7%	251	55.3%	256	56.4%	260	57.3%	264	58.1%
1998	Regular	352	122	34.7%	211	59.9%	231	65.6%	236	67.0%	236	67.0%	244	69.3%	245	69.6%
	EOF	69	15	21.7%	33	47.8%	37	53.6%	37	53.6%	38	55.1%	38	55.1%	39	56.5%
	Special	51	13	25.5%	23	45.1%	26	51.0%	26	51.0%	26	51.0%	28	54.9%	29	56.9%
	Total	472	150	31.8%	267	56.6%	294	62.3%	299	63.3%	300	63.6%	310	65.7%	313	66.3%
1999	Regular	414	172	41.5%	235	56.8%	252	60.9%	252	60.9%	257	62.1%	257	62.1%	-	-
	EOF	60	20	33.3%	27	45.0%	30	50.0%	31	51.7%	34	56.7%	34	56.7%	-	-
	Special	54	11	20.4%	26	48.1%	29	53.7%	29	53.7%	29	53.7%	29	53.7%	-	-
	Total	528	203	38.4%	288	54.5%	311	59.4%	312	59.1%	320	60.6%	320	60.6%	-	-
2000	Regular	511	250	48.9%	341	66.7%	353	69.1%	361	70.6%	366	71.6%	-	-	-	-
	EOF	64	16	25.0%	31	48.4%	35	54.7%	37	57.8%	37	57.8%	-	-	-	-
	Special	63	18	28.6%	30	47.6%	31	49.2%	35	55.6%	35	55.6%	-	-	-	-
	Total	638	284	44.5%	402	63.0%	419	66.1%	433	67.9%	438	68.7%	-	-	-	-
2001	Regular	497	265	53.3%	329	66.2%	337	67.8%	340	68.4%	-	-	-	-	-	-
	EOF	69	18	26.1%	30	43.5%	35	50.7%	36	52.2%	-	-	-	-	-	-
	Special	62	21	33.9%	34	54.8%	35	56.5%	36	58.1%	-	-	-	-	-	-
	Total	628	304	48.4%	393	62.6%	407	65.2%	412	65.6%	-	-	-	-	-	-
2002	Regular	543	289	53.2%	392	72.2%	403	74.2%	-	-	-	-	-	-	-	-
	EOF	73	17	23.3%	37	50.7%	41	56.2%	-	-	-	-	-	-	-	-
	Special	68	24	35.3%	30	44.1%	33	48.5%	-	-	-	-	-	-	-	-
	Total	684	330	48.2%	459	67.1%	477	69.7%	-	-	-	-	-	-	-	-
2003	Regular	582	364	62.5%	438	75.3%	-	-	-	-	-	-	-	-	-	-
	EOF	70	27	38.6%	37	52.9%	-	-	-	-	-	-	-	-	-	-
	Special	73	37	50.7%	53	72.6%	-	-	-	-	-	-	-	-	-	-
	Total	725	428	59.0%	528	72.8%	-	-	-	-	-	-	-	-	-	-
2004	Regular	610	426	69.8%	-	-	-	-	-	-	-	-	-	-	-	-
	EOF	69	25	36.2%	-	-	-	-	-	-	-	-	-	-	-	-
	Special	76	35	46.1%	-	-	-	-	-	-	-	-	-	-	-	-
	Total	755	486	64.4%	-	-	-	-	-	-	-	-	-	-	-	-

[1] Includes all from cohort who are graduated in fewer than four years.
 * 1999 cohort adjusted in fall 2005 from 528 to 524