

SECTION III:

ENROLLMENT

2008 INSTITUTIONAL PROFILE

TOTAL FALL 2008 ENROLLMENT = 5,847

By Age

Less than 20	1,666	28.5%
20 to 24	3,239	55.4%
25 to 29	389	6.7%
30 to 39	249	4.3%
Greater than 39	304	5.2%
Missing	0	N/A

By Sex

Female	3,488	59.7%
Male	2,359	40.3%

By Ethnicity

American Indian/Native Alaskan	16	0.3%
Asian/Pacific Islander	295	5.0%
Black, non-Hispanic	366	6.3%
Hispanic	502	8.6%
White, non-Hispanic	4,657	79.6%
missing	11	0.2%

By Citizenship

U.S. Citizen/Permanent Resident	5,684	97.2%
non-Citizen/non-Resident	163	2.8%

By Ethnicity and Citizenship

American Indian/Native Alaskan	16	0.3%
Asian/Pacific Islander	263	4.5%
Black, non-Hispanic	350	6.0%
Hispanic	488	8.3%
White, non-Hispanic	4,556	77.9%
Nonresident Alien	163	2.8%
missing	11	0.2%

By State of Origin

New Jersey	5,361	91.7%
New York	273	4.7%
Other U.S. State/Territory	48	0.8%
Foreign Country	163	2.8%
missing	2	0.0%

TOTAL FALL 2008 ENROLLMENT = 5,847

	First-time Undergraduate		Transfer Undergraduate		Readmitted Undergraduate		Continuing Undergraduate		First-time/Transfer Graduate		Continuing/Readmit Graduate		All Nondegree (Undergrad/Grad)	
	Number	Percent	Number	Percent	Number	Percent	Number	Percent	Number	Percent	Number	Percent	Number	Percent
By Age														
< 20	867	98.5%	118	19.0%	0	0.0%	646	17.3%	0	0.0%	0	0.0%	35	10.4%
20 to 24	13	1.5%	410	66.0%	17	30.9%	2,650	71.1%	9	14.1%	8	5.0%	132	39.1%
25 to 29	0	0.0%	45	7.2%	15	27.3%	215	5.8%	21	32.8%	36	22.4%	57	16.9%
30 to 39	0	0.0%	24	3.9%	12	21.8%	107	2.9%	16	25.0%	54	33.5%	36	10.7%
> 39	0	0.0%	24	3.9%	11	20.0%	110	3.0%	18	28.1%	63	39.1%	78	23.1%
	880		621		55		3,728		64		161		338	
By Sex														
Female	514	58.4%	354	57.0%	27	49.1%	2,188	58.7%	51	79.7%	119	73.9%	235	69.5%
Male	366	41.6%	267	43.0%	28	50.9%	1,540	41.3%	13	20.3%	42	26.1%	103	30.5%
	880		621		55		3,728		64		161		338	
By Ethnicity														
Am. Ind./Nat. Al.	2	0.2%	1	0.2%	0	0.0%	12	0.3%	0	0.0%	0	0.0%	1	0.3%
Asian/Pac. Is.	56	6.4%	35	5.6%	6	10.9%	181	4.9%	0	0.0%	3	1.9%	14	4.1%
Black, non-Hisp.	55	6.3%	36	5.8%	7	12.7%	251	6.7%	1	1.6%	9	5.6%	7	2.1%
Hispanic	93	10.6%	60	9.7%	6	10.9%	310	8.3%	3	4.7%	5	3.1%	25	7.4%
White, non-Hisp.	671	76.3%	483	77.8%	36	65.5%	2,974	79.8%	60	93.8%	144	89.4%	289	85.5%
missing	3	0.3%	6	1.0%	0	0.0%	0	0.0%	0	0.0%	0	0.0%	2	0.6%
	880		621		55		3,728		64		161		338	
By Citizenship														
U.S. Citizen/Resident	866	98.4%	611	98.4%	54	98.2%	3,637	97.6%	64	100.0%	156	96.9%	296	87.6%
non-Citizen/non-Res.	14	1.6%	10	1.6%	1	1.8%	91	2.4%	0	0.0%	5	3.1%	42	12.4%
	880		621		55		3,728		64		161		338	
By Ethnicity & Citizenship														
Am. Ind./Nat. Al.	2	0.2%	1	0.2%	0	0.0%	12	0.3%	0	0.0%	0	0.0%	1	0.3%
Asian/Pac. Is.	53	6.0%	30	4.8%	5	9.1%	161	4.3%	0	0.0%	2	1.2%	12	3.6%
Black, non-Hisp.	51	5.8%	36	5.8%	7	12.7%	239	6.4%	1	1.6%	9	5.6%	7	2.1%
Hispanic	92	10.5%	59	9.5%	6	10.9%	303	8.1%	3	4.7%	5	3.1%	20	5.9%
White, non-Hisp.	665	75.6%	479	77.1%	36	65.5%	2,922	78.4%	60	93.8%	140	87.0%	254	75.1%
Nonresident Alien	14	1.6%	10	1.6%	1	1.8%	91	2.4%	0	0.0%	5	3.1%	42	12.4%
missing	3	0.3%	6	1.0%	0	0.0%	0	0.0%	0	0.0%	0	0.0%	2	0.6%
	880		621		55		3,728		64		161		338	
By State of Origin														
New Jersey	840	95.5%	552	89.0%	47	85.5%	3,433	92.1%	62	96.9%	150	93.2%	276	81.7%
New York	14	1.6%	53	8.5%	7	12.7%	183	4.9%	1	1.6%	5	3.1%	10	3.0%
Other U.S. State/Ter.	12	1.4%	5	0.8%	0	0.0%	20	0.5%	1	1.6%	1	0.6%	10	3.0%
Foreign Country	14	1.6%	10	1.6%	1	1.8%	91	2.4%	0	0.0%	5	3.1%	42	12.4%
missing	0	N/A	1	N/A	0	N/A	1	N/A	0	N/A	0	N/A	0	N/A
	880		621		55		3,728		64		161		338	

TOTAL FALL 2008 ENROLLMENT = 5,847

By Veteran Status

Veteran/Dependent of Deceased Veteran	13	0.2%
Non-Veteran	5,834	99.8%

By Disability Status

Disabled	246	4.2%
Not Disabled	5,601	95.8%

By Matriculation Status

Degree-seeking	5,509	94.2%
Nondegree-seeking	338	5.8%

By Attendance Status

Full-time	4,995	85.4%
Part-time	852	14.6%

By Undergraduate/Graduate Status

Total Undergraduate	5,561	95.1%
Total Graduate	286	4.9%

By Undergraduate Class (N=5,561)

Freshmen	1,397	26.4%
Sophomores	1,203	22.8%
Juniors	1,449	27.4%
Seniors	1,235	23.4%
Unclassified UG/Nondegree-Seeking	277	N/A

By Undergraduate Special Programs (N=5,561)

EOF	309	5.6%
EOF Honor's Program	1	0.0%
Honor's Program	182	3.3%
No Special Program Designation	5,069	91.2%

By Status When First Admitted (UG only N=5,561)

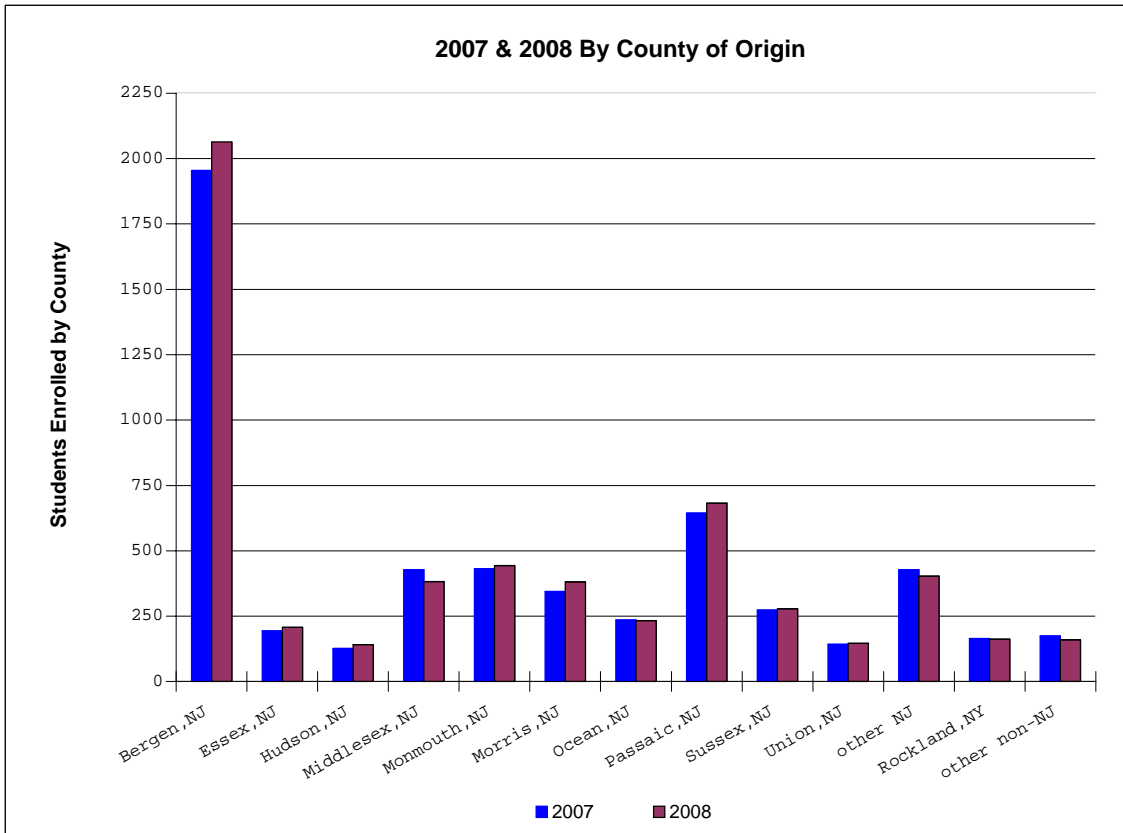
EOF Admit	278	5.6%
EOF Transfer Admit	38	0.8%
Regular Admit	2,542	51.2%
Special Admit	382	7.7%
Transfer Admit	2,044	41.1%
Unclassified UG/Non-Matriculated	277	N/A

TOTAL FALL 2008 ENROLLMENT = 5,847

	First-time Undergraduate		Transfer Undergraduate		Readmitted Undergraduate		Continuing Undergraduate		First-time/Transfer Graduate		Continuing/Readmit Graduate		All Nondegree (Undergrad/Grad)	
	Number	Percent	Number	Percent	Number	Percent	Number	Percent	Number	Percent	Number	Percent	Number	Percent
By Veteran Status														
Veteran/Dependent	0	0.0%	0	0.0%	0	0.0%	13	0.3%	0	0.0%	0	0.0%	0	0.0%
Non-Veteran	880	100.0%	621	100.0%	55	100.0%	3,715	99.7%	64	100.0%	161	100.0%	338	100.0%
	880		621		55		3,728		64		161		338	
By Disability Status														
Disabled	0	0.0%	0	0.0%	0	0.0%	0	0.0%	1	1.6%	3	1.9%	7	2.1%
Not Disabled	880	100.0%	621	100.0%	55	100.0%	3,728	100.0%	63	98.4%	158	98.1%	331	97.9%
	880		621		55		3,728		64		161		338	
By Attend. Status														
Full-time	879	99.9%	564	90.8%	23	41.8%	3,410	91.5%	3	4.7%	8	5.0%	108	32.0%
Part-time	1	0.1%	57	9.2%	32	58.2%	318	8.5%	61	95.3%	153	95.0%	230	68.0%
	880		621		55		3,728		64		161		338	
By Undergrad vs. Grad														
Undergraduate	880	100.0%	621	100.0%	55	100.0%	3,728	100.0%	0	0.0%	0	0.0%	277	82.0%
Graduate	0	0.0%	0	0.0%	0	0.0%	0	0.0%	64	100.0%	161	100.0%	61	18.0%
	880		621		55		3,728		64		161		338	
By UG Class (N=5,561)														
Freshmen	879	99.9%	180	29.0%	3	5.5%	335	9.0%	0	0.0%	0	0.0%	0	0.0%
Sophomores	1	0.1%	232	37.4%	8	14.5%	962	25.8%	0	0.0%	0	0.0%	0	0.0%
Juniors	0	0.0%	209	33.7%	20	36.4%	1,220	32.7%	0	0.0%	0	0.0%	0	0.0%
Seniors	0	0.0%	0	0.0%	24	43.6%	1,211	32.5%	0	0.0%	0	0.0%	0	0.0%
Unclassified UG	0	N/A	0	N/A	0	N/A	0	N/A	0	N/A	0	N/A	277	N/A
	880		621		55		3,728		0		0		277	
By UG Spec. Pr. (N=5,561)														
EOF	82	9.8%	18	2.9%	4	7.3%	204	5.7%	0	0.0%	0	0.0%	0	0.0%
EOF Honor's Program	0	0.0%	0	0.0%	0	0.0%	1	0.0%	0	0.0%	0	0.0%	0	0.0%
Honor's Program	41	4.9%	0	0.0%	0	0.0%	140	3.9%	0	0.0%	0	0.0%	0	0.0%
No Spec. Pr. Desig.	757	90.2%	603	97.1%	51	92.7%	3,383	94.3%	0	0.0%	0	0.0%	277	100.0%
	880		621		55		3,728		0		0		277	
By UG Admit Status (N=5,561)														
EOF	82	9.3%	0	0.0%	6	10.9%	190	5.1%	0	0.0%	0	0.0%	0	0.0%
EOF Transfer	0	0.0%	18	2.9%	0	0.0%	20	0.5%	0	0.0%	0	0.0%	0	0.0%
Regular	657	74.7%	0	0.0%	17	30.9%	1,868	50.1%	0	0.0%	0	0.0%	0	0.0%
Special	141	16.0%	0	0.0%	2	3.6%	239	6.4%	0	0.0%	0	0.0%	0	0.0%
Transfer	0	0.0%	603	97.1%	30	54.5%	1,411	37.8%	0	0.0%	0	0.0%	0	0.0%
Unclassified UG	0	N/A	0	N/A	0	N/A	0	N/A	0	N/A	0	N/A	277	N/A
	880		621		55		3,728		0		0		277	

By County of Origin

Atlantic	12	0.2%	Salem	2	0.0%	
Bergen	2,063	35.3%	Somerset	87	1.5%	
Burlington	60	1.0%	Sussex	278	4.8%	
Camden	45	0.8%	Union	146	2.5%	
Cape May	12	0.2%	Warren	60	1.0%	
Cumberland	7	0.1%		Subtotal	5,360	91.7%
Essex	207	3.5%				
Gloucester	24	0.4%	Rockland	162	2.8%	
Hudson	141	2.4%	Orange	72	1.2%	
Hunterdon	54	0.9%	Westchester	3	0.1%	
Mercer	40	0.7%	Other non-NJ	85	1.5%	
Middlesex	382	6.5%	blank (missing)	2	0.0%	
Monmouth	444	7.6%	International	163	2.8%	
Morris	381	6.5%		Subtotal	487	8.3%
Ocean	233	4.0%				
Passaic	682	11.7%				
TOTAL			5,847			



TOTAL FALL 2008 ENROLLMENT = 5,847

By Non-Citizen Country of Origin (N= 53 countries)

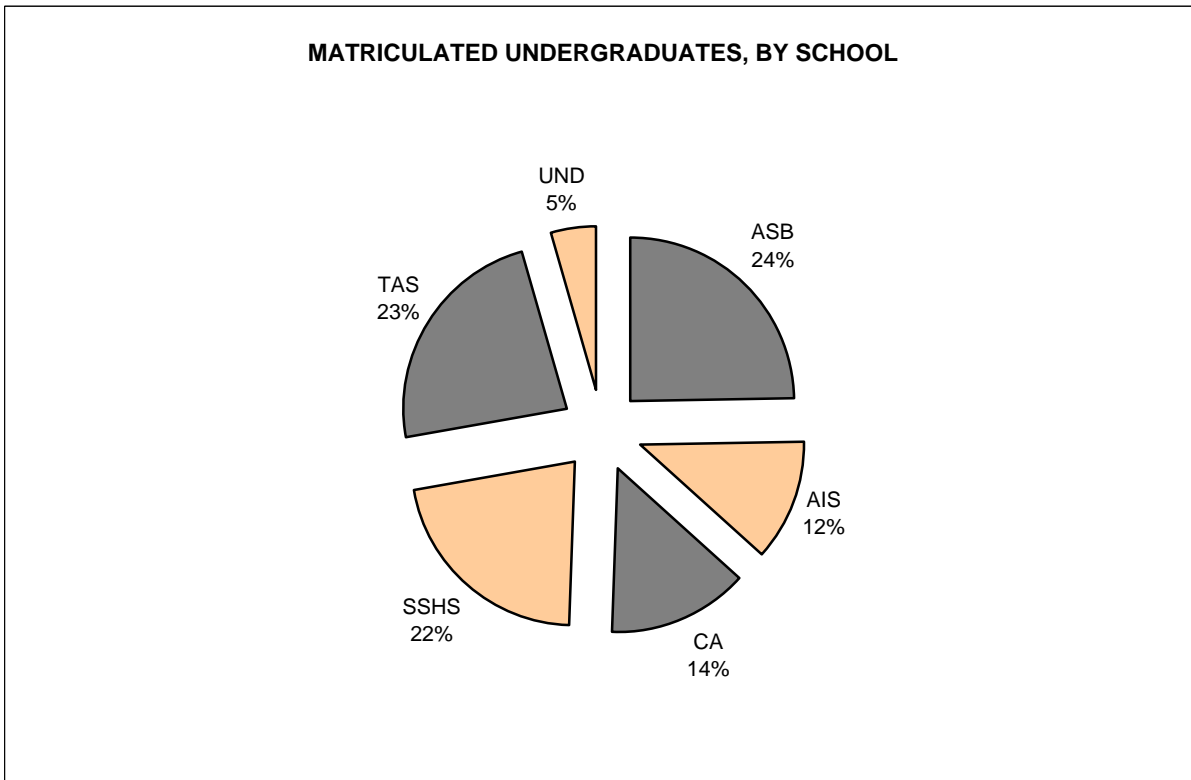
Bulgaria	33	20.2%
Germany	22	13.5%
Nigeria	8	4.9%
Brazil	7	4.3%
South Korea	7	4.3%
India	6	3.7%
Trinidad and Tobago	5	3.1%
Philippines	4	2.5%
Poland	4	2.5%
Sweden	4	2.5%
Russia	4	2.5%
France	3	1.8%
Israel	3	1.8%
Turkey	3	1.8%
Australia	2	1.2%
Austria	2	1.2%
China	2	1.2%
Colombia	2	1.2%
Iraq	2	1.2%
Jamaica	2	1.2%
Kenya	2	1.2%
Mongolia	2	1.2%
Romania	2	1.2%
Croatia	2	1.2%
Macedonia	2	1.2%
Slovakia	1	0.6%
Afghanistan	1	0.6%
Argentina	1	0.6%
Bahrain	1	0.6%
Bangladesh	1	0.6%
Canada	1	0.6%
China (Taiwan)	1	0.6%
Costa Rica	1	0.6%
Denmark	1	0.6%
El Salvador	1	0.6%
Ethiopia	1	0.6%
Hungary	1	0.6%
Indonesia	1	0.6%
Italy	1	0.6%
Japan	1	0.6%
Lebanon	1	0.6%
Malaysia	1	0.6%
Mexico	1	0.6%
Norway	1	0.6%
Oman	1	0.6%
Pakistan	1	0.6%
Panama	1	0.6%
Peru	1	0.6%
St. Vincent and Grenadin	1	0.6%
South Africa	1	0.6%
Spain	1	0.6%
Armenia	1	0.6%
Serbia-Montenegro	1	0.6%

163

TOTAL FALL 2008 ENROLLMENT = 5,847

By School, Matriculated Undergraduates (N= 5,284)

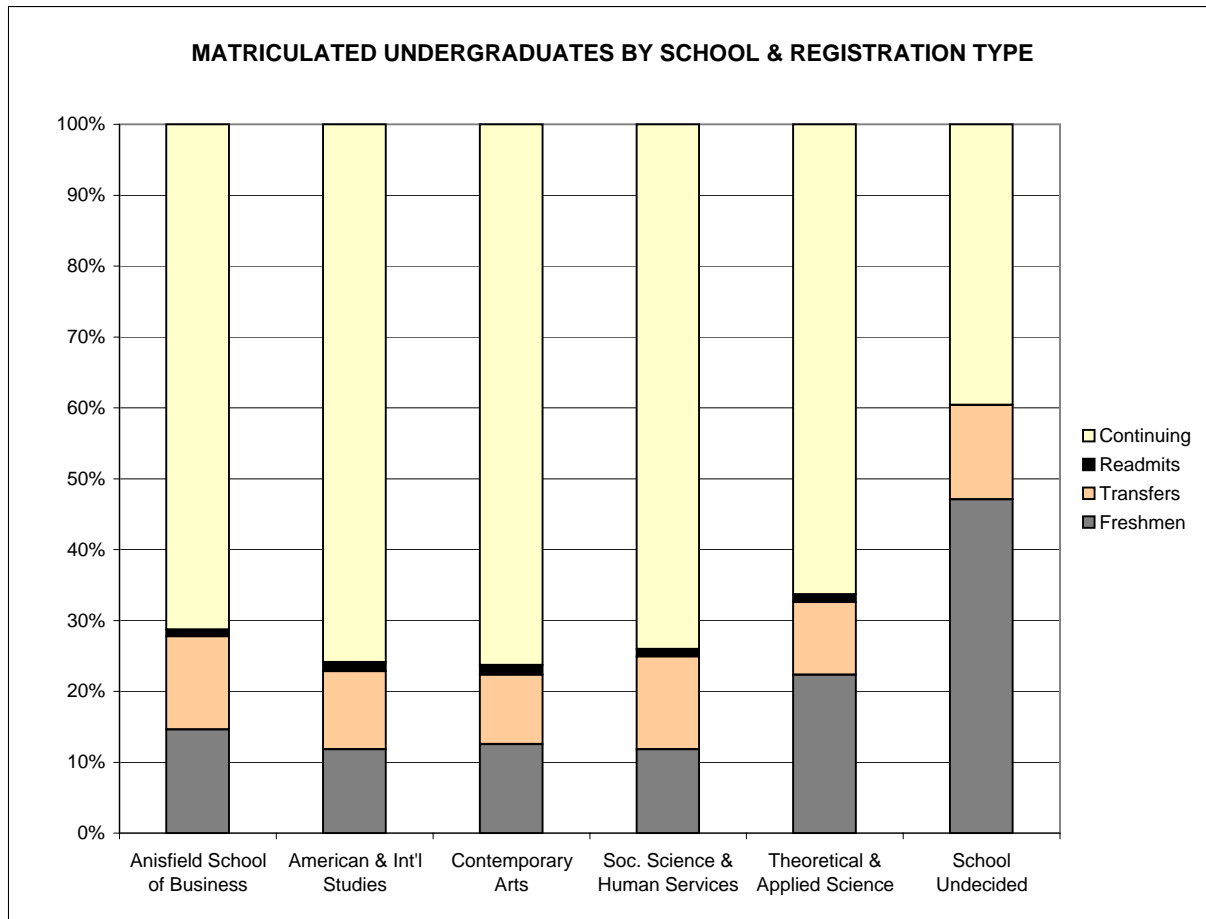
Anisfield School of Business	1,300	24.6%
American and International Studies	643	12.2%
Contemporary Arts	734	13.9%
Social Science and Human Services	1,140	21.6%
Theoretical and Applied Sciences	1,227	23.2%
Matriculated - School Undecided	240	4.5%



TOTAL FALL 2008 ENROLLMENT = 5,847

By UG School [1]	First-time Undergraduate		Transfer Undergraduate		Readmitted Undergraduate		Continuing Undergraduate	
	Number	Row Percent	Number	Row Percent	Number	Row Percent	Number	Row Percent
Anisfield School of Business	190	14.6%	171	13.2%	12	0.9%	927	71.3%
American & Int'l Studies	76	11.8%	71	11.0%	8	1.2%	488	75.9%
Contemporary Arts	92	12.5%	72	9.8%	10	1.4%	560	76.3%
Soc. Science & Human Services	135	11.8%	149	13.1%	12	1.1%	844	74.0%
Theoretical & Applied Science	274	22.3%	126	10.3%	13	1.1%	814	66.3%
School Undecided	113	47.1%	32	13.3%	0	0.0%	95	39.6%
	880	16.7%	621	11.8%	55	1.0%	3,728	70.6%

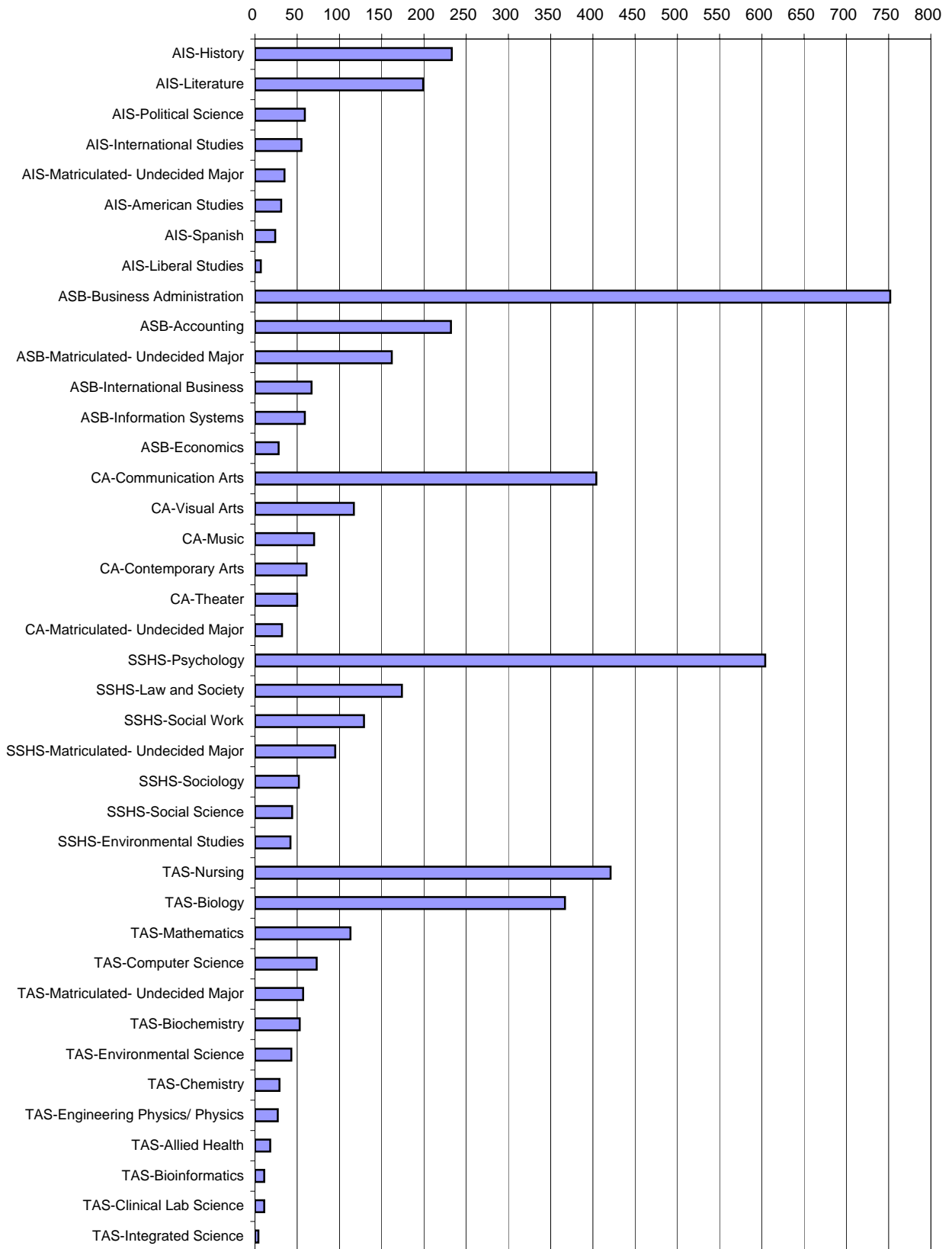
[1] Matriculated undergraduates (N = 5284)



By School and Major, Matriculated Undergraduates (N= 5,284)

ASB	Accounting	232	4.4%
	Business Administration	752	14.2%
	Economics	28	0.5%
	Information Systems	59	1.1%
	International Business	67	1.3%
	Matriculated- Undecided Major	162	3.1%
AIS	American Studies	31	0.6%
	History	233	4.4%
	International Studies	55	1.0%
	Liberal Studies	7	0.1%
	Literature	199	3.8%
	Political Science	59	1.1%
	Spanish	24	0.5%
	Matriculated- Undecided Major	35	0.7%
CA	Communication Arts	404	7.6%
	Contemporary Arts	61	1.2%
	Music	70	1.3%
	Theater	50	0.9%
	Visual Arts	117	2.2%
	Matriculated- Undecided Major	32	0.6%
SSHS	Environmental Studies	42	0.8%
	Law and Society	174	3.3%
	Psychology	604	11.4%
	Social Science	44	0.8%
	Social Work	129	2.4%
	Sociology	52	1.0%
	Matriculated- Undecided Major	95	1.8%
TAS	Allied Health	18	0.3%
	Biochemistry	53	1.0%
	Bioinformatics	11	0.2%
	Biology	367	6.9%
	Chemistry	29	0.5%
	Clinical Lab Science	11	0.2%
	Computer Science	73	1.4%
	Engineering Physics/ Physics	27	0.5%
	Environmental Science	43	0.8%
	Integrated Science	4	0.1%
	Mathematics	113	2.1%
	Nursing	421	8.0%
	Matriculated- Undecided Major	57	1.1%
UND	School & Major Undecided	240	4.5%

**FALL 2008 MATRICULATED UNDERGRADUATE
ENROLLMENT BY SCHOOL AND MAJOR**



TOTAL FALL 2008 ENROLLMENT = 5,847

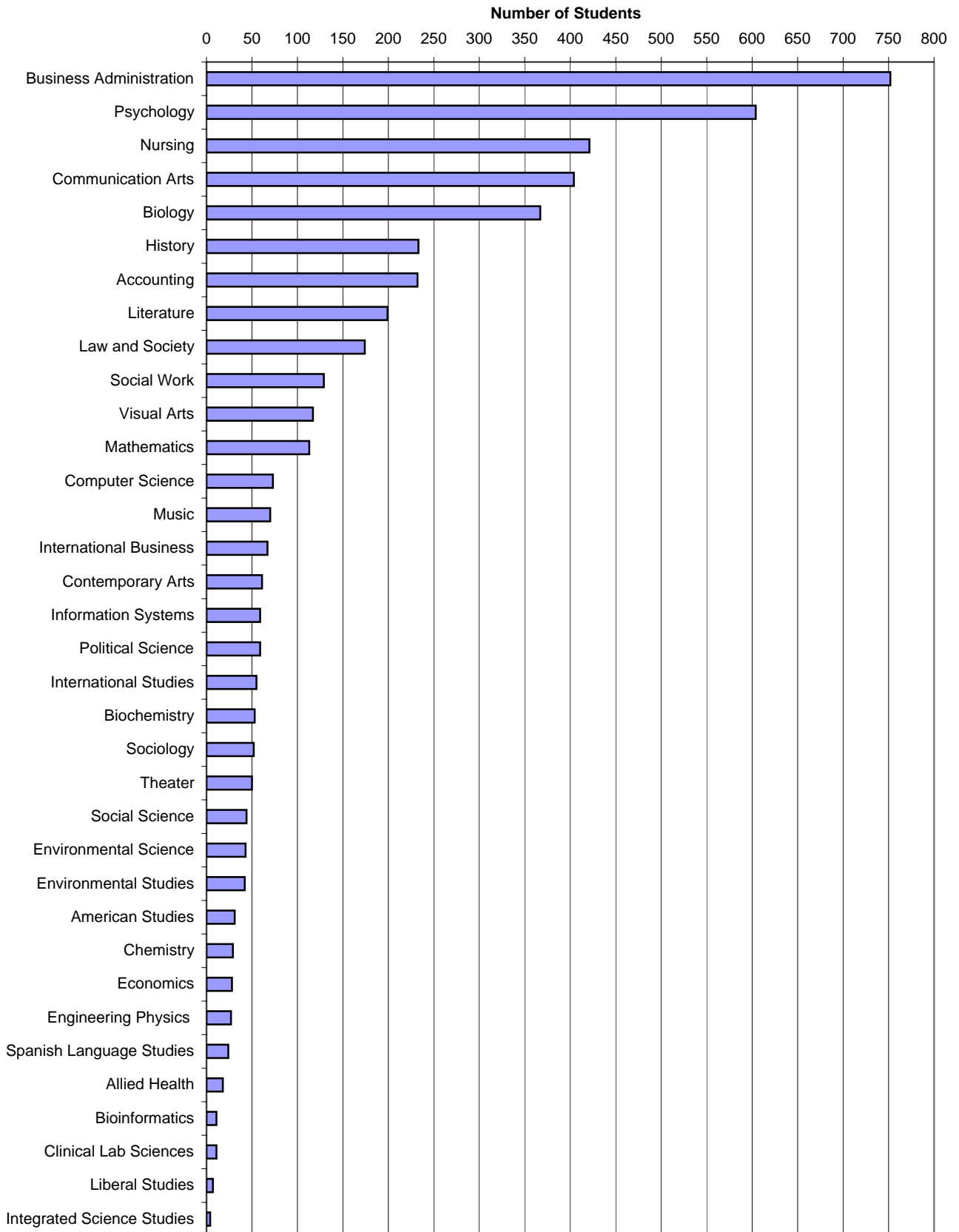
By Major, Matriculated Undergraduates (N = 5,284)

Accounting	232	5.0%
Allied Health	18	0.4%
American Studies	31	0.7%
Biochemistry	53	1.1%
Bioinformatics	11	0.2%
Biology	367	7.9%
Business Administration	752	16.1%
Chemistry	29	0.6%
Clinical Lab Sciences	11	0.2%
Communication Arts	404	8.7%
Computer Science	73	1.6%
Contemporary Arts	61	1.3%
Economics	28	0.6%
Engineering Physics	27	0.6%
Environmental Science	43	0.9%
Environmental Studies	42	0.9%
History	233	5.0%
Information Systems	59	1.3%
Integrated Science Studies	4	0.1%
International Business	67	1.4%
International Studies	55	1.2%
Law and Society	174	3.7%
Liberal Studies	7	0.2%
Literature	199	4.3%
Mathematics	113	2.4%
Music	70	1.5%
Nursing	421	9.0%
Political Science	59	1.3%
Psychology	604	13.0%
Social Science	44	0.9%
Social Work	129	2.8%
Sociology	52	1.1%
Spanish Language Studies	24	0.5%
Theater	50	1.1%
Visual Arts	117	2.5%
Undecided Major	621	N/A

5,284

TOTAL FALL 2008 ENROLLMENT = 5,847

**FALL 2008 MATRICULATED UNDERGRADUATE
ENROLLMENT BY PRIMARY MAJOR**



MATRICULATED UNDERGRADUATES (N = 5,284) BY SCHOOL, MAJOR, AND REGISTRATION TYPE

		First-time Undergraduate		Transfer Undergraduate		Readmitted Undergraduate		Continuing Undergraduate	
		Number	Row Pct	Number	Row Pct	Number	Row Pct	Number	Row Pct
ASB	Accounting	29	12.5%	30	12.9%	2	0.9%	171	73.7%
	Business Administration	100	13.3%	118	15.7%	7	0.9%	527	70.1%
	Economics	5	17.9%	--	0.0%	1	3.6%	22	78.6%
	Information Systems	4	6.8%	10	16.9%	1	1.7%	44	74.6%
	International Business	7	10.4%	6	9.0%	--	0.0%	54	80.6%
	Matriculated- Undecided Major	45	27.8%	7	4.3%	1	0.6%	109	67.3%
AIS	American Studies	2	6.5%	4	12.9%	1	3.2%	24	77.4%
	History	23	9.9%	25	10.7%	5	2.1%	180	77.3%
	International Studies	11	20.0%	6	10.9%	--	0.0%	38	69.1%
	Liberal Studies	1	14.3%	6	85.7%	--	0.0%	--	0.0%
	Literature	24	12.1%	23	11.6%	2	1.0%	150	75.4%
	Political Science	2	3.4%	4	6.8%	--	0.0%	53	89.8%
	Spanish Language Studies	3	12.5%	2	8.3%	--	0.0%	19	79.2%
	Matriculated- Undecided Major	10	28.6%	1	2.9%	--	0.0%	24	68.6%
CA	Communication Arts	44	10.9%	42	10.4%	6	1.5%	312	77.2%
	Contemporary Arts	2	3.3%	4	6.6%	--	0.0%	55	90.2%
	Music	7	10.0%	7	10.0%	--	0.0%	56	80.0%
	Theater	11	22.0%	5	10.0%	--	0.0%	34	68.0%
	Visual Arts	17	14.5%	12	10.3%	3	2.6%	85	72.6%
	Matriculated- Undecided Major	11	34.4%	2	6.3%	1	3.1%	18	56.3%
SSHS	Environmental Studies	2	4.8%	8	19.0%	--	0.0%	32	76.2%
	Law and Society	21	12.1%	16	9.2%	3	1.7%	134	77.0%
	Psychology	73	12.1%	76	12.6%	5	0.8%	450	74.5%
	Social Science	5	11.4%	7	15.9%	2	4.5%	30	68.2%
	Social Work	10	7.8%	23	17.8%	1	0.8%	95	73.6%
	Sociology	4	7.7%	9	17.3%	1	1.9%	38	73.1%
	Matriculated- Undecided Major	20	21.1%	10	10.5%	--	0.0%	65	68.4%
TAS	Allied Health	4	22.2%	3	16.7%	--	0.0%	11	61.1%
	Biochemistry	15	28.3%	8	15.1%	--	0.0%	30	56.6%
	Bioinformatics	2	18.2%	1	9.1%	--	0.0%	8	72.7%
	Biology	68	18.5%	60	16.3%	1	0.3%	238	64.9%
	Chemistry	8	27.6%	4	13.8%	--	0.0%	17	58.6%
	Clinical Lab Science	3	27.3%	1	9.1%	--	0.0%	7	63.6%
	Computer Science	20	27.4%	8	11.0%	3	4.1%	42	57.5%
	Engineering Physics	9	33.3%	1	3.7%	--	0.0%	17	63.0%
	Environmental Science	3	7.0%	4	9.3%	1	2.3%	35	81.4%
	Integrated Science	--	0.0%	--	0.0%	--	0.0%	4	100.0%
	Mathematics	38	33.6%	7	6.2%	--	0.0%	68	60.2%
	Nursing	88	20.9%	28	6.7%	7	1.7%	298	70.8%
	Matriculated- Undecided Major	16	28.1%	1	1.8%	1	1.8%	39	68.4%
UND	School & Major Undecided	113	47.1%	32	13.3%	--	0.0%	95	39.6%
		880	16.7%	621	11.8%	55	1.0%	3,728	70.6%

By School, Primary Major and Concentration/Track, Matriculated Undergraduates

By School, *Primary* Major and Concentration/Track, Matriculated Undergraduates

<u>Anisfield School of Business</u>		Count	Pct. of Major
Business Administration	Finance	170	22.6%
	Management	245	32.6%
	Marketing	226	30.1%
	Unspecified	<u>111</u>	14.8%
		752	
 <u>Contemporary Arts</u>			
Communication Arts	Creative Writing	38	9.4%
	Design & Interactive Media	80	19.8%
	Digital Filmmaking	56	13.9%
	Journalism	69	17.1%
	Media & Cinema Studies	82	20.3%
	Unspecified	<u>79</u>	19.6%
		404	
Music	Music Industry	16	22.9%
	Music Production	15	21.4%
	Music Performance	7	10.0%
	Music Studies	2	2.9%
	Unspecified	<u>30</u>	42.9%
		70	
Theater	Acting	23	46.0%
	Design/Technical Theater	3	6.0%
	Directing/Stage Management	3	6.0%
	Theater Studies	1	2.0%
	Unspecified	<u>20</u>	40.0%
		50	
Visual Arts	Art History	4	3.4%
	Drawing / Painting	27	23.1%
	New Media/Computer Art	2	1.7%
	Photography	12	10.3%
	Sculpture	2	1.7%
Unspecified	<u>70</u>	59.8%	
		117	
 <u>Social Science and Human Services</u>			
Social Science	Africana Studies	0	0.0%
	Community Mental Health	4	9.1%
	Cultural Studies	0	0.0%
	Ethnic Relations	0	0.0%
	Gender Studies	0	0.0%
	Labor Studies	0	0.0%
	Unspecified	<u>40</u>	90.9%
		44	
 <u>Theoretical and Applied Science</u>			
Allied Health	Diagnostic Medical Sonography	2	11.1%
	Nuclear Medicine Technology	1	5.6%
	Respiratory Care	1	5.6%
	unspecified	<u>14</u>	77.8%
		18	
Clinical Lab Science	Cytotechnology	2	18.2%
	Unspecified	<u>9</u>	81.8%
		11	
Biology	Physician's Assistant	20	5.4%
	Physical Therapy	58	15.8%
	Chiropractic	3	0.8%
	Dental	22	6.0%
	Optometry	5	1.4%
	Unspecified	<u>259</u>	70.6%
		367	
Nursing	RN/BSN	89	21.1%
	Generic BSN	<u>332</u>	78.9%
		421	

Provisional Status by Major and Primary Concentration/Track within Major, Matriculated Undergraduates

Primary Major and Concentration/Track	Officially Accepted Majors		Provisional Majors		Total Majors
	Number	Pct. of Total	Number	Pct. of Total	
Accounting	165	71.1%	67	28.9%	232
Business Admin. (Finance)	124	72.9%	46	27.1%	170
Business Admin. (Management)	155	63.3%	90	36.7%	245
Business Admin. (Marketing)	159	70.4%	67	29.6%	226
Business Admin. (Unspecified)	<u>37</u>	<u>33.3%</u>	<u>74</u>	<u>66.7%</u>	<u>111</u>
	475	63.2%	277	36.8%	752
Communication Arts (Creative Writing)	39	100.0%	0	0.0%	39
Com. Art. (Design & Interactive Media)	80	100.0%	0	0.0%	80
Com. Art. (Digital Filmmaking)	56	100.0%	0	0.0%	56
Com. Art. (Journalism)	69	100.0%	0	0.0%	69
Com. Art. (Media & Cinema Studies)	82	100.0%	0	0.0%	82
Com. Art. (Unspecified)	<u>79</u>	<u>100.0%</u>	<u>0</u>	<u>0.0%</u>	<u>79</u>
	405	100.0%	0	0.0%	405
Economics	20	71.4%	8	28.6%	28
Information Systems	42	71.2%	17	28.8%	59
International Business	42	62.7%	25	37.3%	67
Nursing (RN/BSN)	89	100.0%	0	0.0%	89
Nursing (Generic BSN)	<u>332</u>	<u>100.0%</u>	<u>0</u>	<u>0.0%</u>	<u>332</u>
	421	100.0%	0	0.0%	421
Social Work	129	100.0%	0	0.0%	129
Total	3,000	81.7%	671	18.3%	3,671

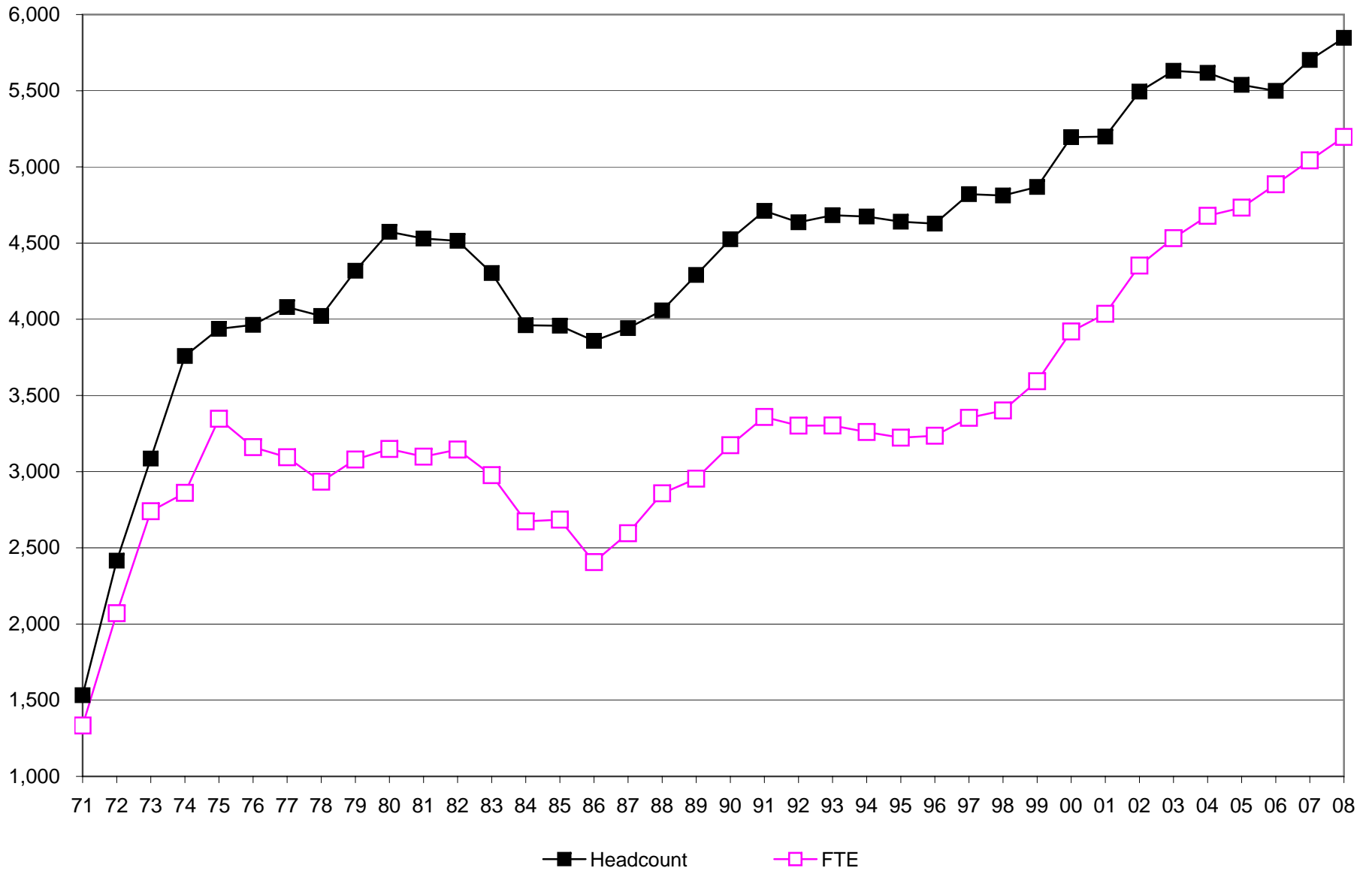
By Certificate Program

	Baccalaureate students		Post-baccalaureate students		All Students ^[1]	
Teacher Certification - Art	15	5.7%	2	3.8%	17	5.4%
Teacher Certification - Biology	8	3.1%	1	1.9%	9	2.9%
Teacher Certification - Business	5	1.9%	0	0.0%	5	1.6%
Teacher Certification - Chemistry	5	1.9%	0	0.0%	5	1.6%
Teacher Certification - Drama	1	0.4%	0	0.0%	1	0.3%
Teacher Certification - Earth Science	3	1.1%	1	1.9%	4	1.3%
Teacher Certification - Elementary Education	110	42.1%	27	50.9%	137	43.6%
Teacher Certification - English	37	14.2%	7	13.2%	44	14.0%
Teacher Certification - Foreign Language/French	1	0.4%	0	0.0%	1	0.3%
Teacher Certification - Foreign Language/Italian	2	0.8%	1	1.9%	3	1.0%
Teacher Certification - Foreign Language/Spanish	6	2.3%	1	1.9%	7	2.2%
Teacher Certification - Mathematics	22	8.4%	3	5.7%	25	8.0%
Teacher Certification - Music	1	0.4%	1	1.9%	2	0.6%
Teacher Certification - Physical Science	1	0.4%	0	0.0%	1	0.3%
Teacher Certification - Physics		0.0%	0	0.0%	0	0.0%
Teacher Certification - Social Studies	43	16.5%	9	17.0%	52	16.6%
Teacher Certification - general	1	0.4%	0	0.0%	1	0.3%
TOTAL	261		53		314	

[1] Includes Major1 and Major2.

Year	HEADCOUNT			FTE		
	Total Headcount	Percent Change From Previous Fall Semester	Cumulative Percent Change From Fall 1971	Total FTE	Percent Change From Previous Fall Semester	Cumulative Percent Change From Fall 1971
1971	1,533	N/A	0.0%	1,334	N/A	0.0%
1972	2,416	57.6%	57.6%	2,071	55.2%	55.2%
1973	3,086	27.7%	101.3%	2,740	32.3%	105.4%
1974	3,759	21.8%	145.2%	2,861	4.4%	114.5%
1975	3,937	4.7%	156.8%	3,347	17.0%	150.9%
1976	3,963	0.7%	158.5%	3,161	-5.6%	137.0%
1977	4,080	3.0%	166.1%	3,094	-2.1%	131.9%
1978	4,022	-1.4%	162.4%	2,934	-5.2%	119.9%
1979	4,318	7.4%	181.7%	3,079	4.9%	130.8%
1980	4,574	5.9%	198.4%	3,149	2.3%	136.1%
1981	4,530	-1.0%	195.5%	3,098	-1.6%	132.2%
1982	4,515	-0.3%	194.5%	3,145	1.5%	135.8%
1983	4,303	-4.7%	180.7%	2,977	-5.3%	123.2%
1984	3,961	-7.9%	158.4%	2,674	-10.2%	100.4%
1985	3,958	-0.1%	158.2%	2,685	0.4%	101.3%
1986	3,858	-2.5%	151.7%	2,406	-10.4%	80.4%
1987	3,942	2.2%	157.1%	2,596	7.9%	94.6%
1988	4,058	2.9%	164.7%	2,858	10.1%	114.2%
1989	4,291	5.7%	179.9%	2,954	3.4%	121.4%
1990	4,525	5.5%	195.2%	3,173	7.4%	137.9%
1991	4,711	4.1%	207.3%	3,359	5.9%	151.8%
1992	4,636	-1.6%	202.4%	3,302	-1.7%	147.5%
1993	4,683	1.0%	205.5%	3,303	0.0%	147.6%
1994	4,674	-0.2%	204.9%	3,260	-1.3%	144.4%
1995	4,640	-0.7%	202.7%	3,223	-1.1%	141.6%
1996	4,628	-0.3%	201.9%	3,236	0.4%	142.6%
1997	4,821	4.2%	214.5%	3,353	3.6%	151.3%
1998	4,812	-0.2%	213.9%	3,401	1.4%	154.9%
1999	4,868	1.2%	217.5%	3,593	5.6%	169.3%
2000	5,195	6.7%	238.9%	3,920	9.1%	193.9%
2001	5,199	0.1%	239.1%	4,036	3.0%	202.5%
2002	5,494	5.7%	258.4%	4,352	7.8%	226.2%
2003	5,631	2.5%	267.3%	4,532	4.1%	239.7%
2004	5,617	-0.2%	266.4%	4,679	3.2%	250.7%
2005	5,538	-1.4%	261.3%	4,733	1.2%	254.8%
2006	5,499	-0.7%	258.7%	4,886	3.2%	266.3%
2007	5,702	3.7%	272.0%	5,043	6.5%	278.0%
2008	5,847	2.5%	281.4%	5,197	3.1%	289.6%

TOTAL ENROLLMENT, FALL 1971 TO FALL 2008



TOTAL FALL 2008 ENROLLMENT = 5,847

Year	Undergraduate Headcount			Undergraduate FTE			Graduate Headcount			Graduate FTE		
	Total Undergrad Headcount	Percent Change From Previous Fall Semester	Cumulative Percent Change From Fall 1971	Total Undergrad FTE	Percent Change From Previous Fall Semester	Cumulative Percent Change From Fall 1971	Graduate Headcount	Percent Change From Previous Fall Semester	Cumulative Percent Change From Fall 1995	Total Graduate FTE	Percent Change From Previous Fall Semester	Cumulative Percent Change From Fall 1995
1971	1,533	N/A	0.0%	1,334	N/A	0.0%	-	-	-	-	-	-
1972	2,416	57.6%	57.6%	2,071	55.2%	55.2%	-	-	-	-	-	-
1973	3,086	27.7%	101.3%	2,740	32.3%	105.4%	-	-	-	-	-	-
1974	3,759	21.8%	145.2%	2,861	4.4%	114.5%	-	-	-	-	-	-
1975	3,937	4.7%	156.8%	3,347	17.0%	150.9%	-	-	-	-	-	-
1976	3,963	0.7%	158.5%	3,161	-5.6%	137.0%	-	-	-	-	-	-
1977	4,080	3.0%	166.1%	3,094	-2.1%	131.9%	-	-	-	-	-	-
1978	4,022	-1.4%	162.4%	2,934	-5.2%	119.9%	-	-	-	-	-	-
1979	4,318	7.4%	181.7%	3,079	4.9%	130.8%	-	-	-	-	-	-
1980	4,574	5.9%	198.4%	3,149	2.3%	136.1%	-	-	-	-	-	-
1981	4,530	-1.0%	195.5%	3,098	-1.6%	132.2%	-	-	-	-	-	-
1982	4,515	-0.3%	194.5%	3,145	1.5%	135.8%	-	-	-	-	-	-
1983	4,303	-4.7%	180.7%	2,977	-5.3%	123.2%	-	-	-	-	-	-
1984	3,961	-7.9%	158.4%	2,674	-10.2%	100.4%	-	-	-	-	-	-
1985	3,958	-0.1%	158.2%	2,685	0.4%	101.3%	-	-	-	-	-	-
1986	3,858	-2.5%	151.7%	2,406	-10.4%	80.4%	-	-	-	-	-	-
1987	3,942	2.2%	157.1%	2,596	7.9%	94.6%	-	-	-	-	-	-
1988	4,058	2.9%	164.7%	2,858	10.1%	114.2%	-	-	-	-	-	-
1989	4,291	5.7%	179.9%	2,954	3.4%	121.4%	-	-	-	-	-	-
1990	4,525	5.5%	195.2%	3,173	7.4%	137.9%	-	-	-	-	-	-
1991	4,711	4.1%	207.3%	3,359	5.9%	151.8%	-	-	-	-	-	-
1992	4,636	-1.6%	202.4%	3,302	-1.7%	147.5%	-	-	-	-	-	-
1993	4,683	1.0%	205.5%	3,303	0.0%	147.6%	-	-	-	-	-	-
1994	4,674	-0.2%	204.9%	3,260	-1.3%	144.4%	-	-	-	-	-	-
1995	4,543	-2.8%	196.3%	3,176	-2.6%	138.1%	97	N/A	0.0%	47	N/A	0.0%
1996	4,526	-0.4%	195.2%	3,193	0.5%	139.4%	102	5.2%	5.2%	43	-8.5%	-8.5%
1997	4,681	3.4%	205.3%	3,287	2.9%	146.4%	140	37.3%	44.3%	66	53.5%	40.4%
1998	4,658	-0.5%	203.8%	3,350	1.9%	151.1%	154	10.0%	58.8%	51	-22.7%	8.5%
1999	4,655	-0.1%	203.7%	3,508	4.7%	163.0%	213	38.3%	119.6%	85	66.7%	80.9%
2000	4,906	5.4%	220.0%	3,805	8.5%	185.2%	289	35.7%	197.9%	115	35.3%	144.7%
2001	4,890	-0.3%	219.0%	3,918	3.0%	193.7%	309	6.9%	218.6%	118	2.6%	151.1%
2002	5,143	5.2%	235.5%	4,215	7.6%	216.0%	351	13.6%	261.9%	137	16.1%	191.5%
2003	5,242	1.9%	241.9%	4,378	3.9%	228.2%	389	10.8%	301.0%	154	12.4%	227.7%
2004	5,278	0.7%	244.3%	4,536	3.6%	240.0%	339	-12.9%	249.5%	143	-7.1%	204.3%
2005	5,233	-0.9%	241.4%	4,606	1.5%	245.3%	305	-10.0%	214.4%	127	-11.2%	170.2%
2006	5,188	-0.9%	238.4%	4,768	3.5%	257.4%	311	2.0%	220.6%	118	-7.1%	151.1%
2007	5,393	4.0%	251.8%	4,919	3.2%	268.7%	309	-0.6%	218.6%	124	5.1%	163.8%
2008	5,561	3.1%	262.8%	5,085	3.4%	281.2%	286	-7.4%	194.8%	112	-9.7%	138.3%

**ENROLLMENT TRENDS FOR NEW, TRANSFER, READMITTED, CONTINUING, AND NONDEGREE STUDENTS
COMBINED UNDERGRADUATE AND GRADUATE, FALL 2004 TO FALL 2008**

	2004		2005		2006		2007		2008		Percent Change 04 to 08	Percent Change 07 to 08
	No.	Pct.	No.	Pct.	No.	Pct.	No.	Pct.	No.	Pct.		
First-time Undergraduates	755	13.4%	748	13.5%	814	14.8%	902	15.8%	880	15.1%	16.6%	-2.4%
First-time Graduate Students	<u>67</u>	<u>1.2%</u>	<u>68</u>	<u>1.2%</u>	<u>58</u>	<u>1.1%</u>	<u>79</u>	<u>1.4%</u>	<u>64</u>	<u>1.1%</u>	-4.5%	-19.0%
<i>Subtotal: First-time</i>	822	14.6%	816	14.7%	872	15.9%	981	17.2%	944	16.1%	14.8%	-3.8%
Undergraduate Transfers [1]	491	8.7%	472	8.5%	610	11.1%	616	10.8%	621	10.6%	26.5%	0.8%
Graduate Transfers	<u>0</u>	<u>0.0%</u>	<u>0</u>	<u>0.0%</u>	<u>0</u>	<u>0.0%</u>	<u>0</u>	<u>0.0%</u>	<u>0</u>	<u>0.0%</u>	N/A	N/A
<i>Subtotal: Transfers</i>	491	8.7%	472	8.5%	610	11.1%	616	10.8%	621	10.6%	26.5%	0.8%
Undergraduate Readmits [2]	82	1.5%	68	1.2%	59	1.1%	68	1.2%	55	0.9%	-32.9%	-19.1%
Graduate Readmits	<u>1</u>	<u>0.0%</u>	<u>1</u>	<u>0.0%</u>	<u>0</u>	<u>0.0%</u>	<u>0</u>	<u>0.0%</u>	<u>6</u>	<u>0.1%</u>	500.0%	N/A
<i>Subtotal: Readmits</i>	83	1.5%	69	1.2%	59	1.1%	68	1.2%	61	1.0%	-26.5%	-10.3%
Undergraduate Continuing [3]	3,505	62.4%	3,572	64.5%	3,423	62.2%	3,528	61.9%	3,728	63.8%	6.4%	5.7%
Graduate Continuing	<u>175</u>	<u>3.1%</u>	<u>157</u>	<u>2.8%</u>	<u>136</u>	<u>2.5%</u>	<u>154</u>	<u>2.7%</u>	<u>155</u>	<u>2.7%</u>	-11.4%	0.6%
<i>Subtotal: Continuing</i>	3,680	65.5%	3,729	67.3%	3,559	64.7%	3,682	64.6%	3,883	66.4%	5.5%	5.5%
UG Nondegree - New	272	4.8%	241	4.4%	165	3.0%	205	3.6%	214	3.7%	-21.3%	4.4%
UG Nondegree - Continuing	173	3.1%	132	2.4%	117	2.1%	74	1.3%	63	1.1%	-63.6%	-14.9%
Grad Nondegree - New	33	0.6%	25	0.5%	21	0.4%	34	0.6%	47	0.8%	42.4%	38.2%
Grad Nondegree - Continuing	<u>63</u>	<u>1.1%</u>	<u>54</u>	<u>1.0%</u>	<u>96</u>	<u>1.7%</u>	<u>42</u>	<u>0.7%</u>	<u>14</u>	<u>0.2%</u>	-77.8%	-66.7%
<i>Subtotal: Nondegree</i>	541	9.6%	452	8.2%	399	7.3%	355	6.2%	338	5.8%	-37.5%	-4.8%
TOTAL	5,617		5,538		5,499		5,702		5,847		4.1%	2.5%

[1] Excludes "stop-outs" (students absent for only one semester who need not apply for formal readmission) and "internal transfers" (students who change from nondegree-seeking to degree-seeking status and have registration type "Ramapo Non-Matriculant").

[2] Excludes "stop-outs" and "internal transfers."

[3] Includes "stop-outs" and "internal transfers."

ENROLLMENT BY AGE, FALL 2004 TO FALL 2008

Undergraduate Students	Fall 2004		Fall 2005		Fall 2006		Fall 2007		Fall 2008		Pct. Change 04 to 08	Pct. Change 07 to 08
	No.	Pct.	No.	Pct.	No.	Pct.	No.	Pct.	No.	Pct.		
Less Than 20	1,435	27.2%	1,446	27.6%	1,463	28.2%	1,617	30.0%	1,666	30.0%	16.1%	3.0%
20 to 24	2,778	52.6%	2,857	54.6%	2,953	56.9%	3,070	56.9%	3,219	57.9%	15.9%	4.9%
25 to 29	414	7.8%	356	6.8%	310	6.0%	303	5.6%	314	5.6%	-24.2%	3.6%
30 to 39	301	5.7%	266	5.1%	219	4.2%	193	3.6%	168	3.0%	-44.2%	-13.0%
40 and Over	350	6.6%	308	5.9%	243	4.7%	210	3.9%	194	3.5%	-44.6%	-7.6%
Missing	0	N/A	0	N/A	0	N/A	0	N/A	0	N/A	N/A	N/A
Total	5,278		5,233		5,188		5,393		5,561		5.4%	3.1%

Graduate Students	Fall 2004		Fall 2005		Fall 2006		Fall 2007		Fall 2008		Pct. Change 04 to 08	Pct. Change 07 to 08
	No.	Pct.	No.	Pct.	No.	Pct.	No.	Pct.	No.	Pct.		
Less Than 20	0	0.0%	0	0.0%	0	0.0%	0	0.0%	0	0.0%	N/A	N/A
20 to 24	28	8.3%	21	6.9%	19	6.1%	20	6.5%	20	7.0%	-28.6%	0.0%
25 to 29	92	27.1%	85	27.9%	91	29.4%	77	24.9%	75	26.2%	-18.5%	-2.6%
30 to 39	87	25.7%	74	24.3%	72	23.2%	83	26.9%	81	28.3%	-6.9%	-2.4%
40 and Over	132	38.9%	125	41.0%	128	41.3%	129	41.7%	110	38.5%	-16.7%	-14.7%
Missing	0	N/A	0	N/A	1	N/A	0	N/A	0	N/A	N/A	N/A
Total	339		305		311		309		286		-15.6%	-7.4%

All Students	Fall 2004		Fall 2005		Fall 2006		Fall 2007		Fall 2008		Pct. Change 04 to 08	Pct. Change 07 to 08
	No.	Pct.	No.	Pct.	No.	Pct.	No.	Pct.	No.	Pct.		
Less Than 20	1,435	25.5%	1,446	26.1%	1,463	26.6%	1,617	28.4%	1,666	28.5%	16.1%	3.0%
20 to 24	2,806	50.0%	2,878	52.0%	2,972	54.1%	3,090	54.2%	3,239	55.4%	15.4%	4.8%
25 to 29	506	9.0%	441	8.0%	401	7.3%	380	6.7%	389	6.7%	-23.1%	2.4%
30 to 39	388	6.9%	340	6.1%	291	5.3%	276	4.8%	249	4.3%	-35.8%	-9.8%
40 and Over	482	8.6%	433	7.8%	371	6.7%	339	5.9%	304	5.2%	-36.9%	-10.3%
Missing	0	N/A	0	N/A	1	N/A	0	N/A	0	N/A	N/A	N/A
Total	5,617		5,538		5,499		5,702		5,847		4.1%	2.5%

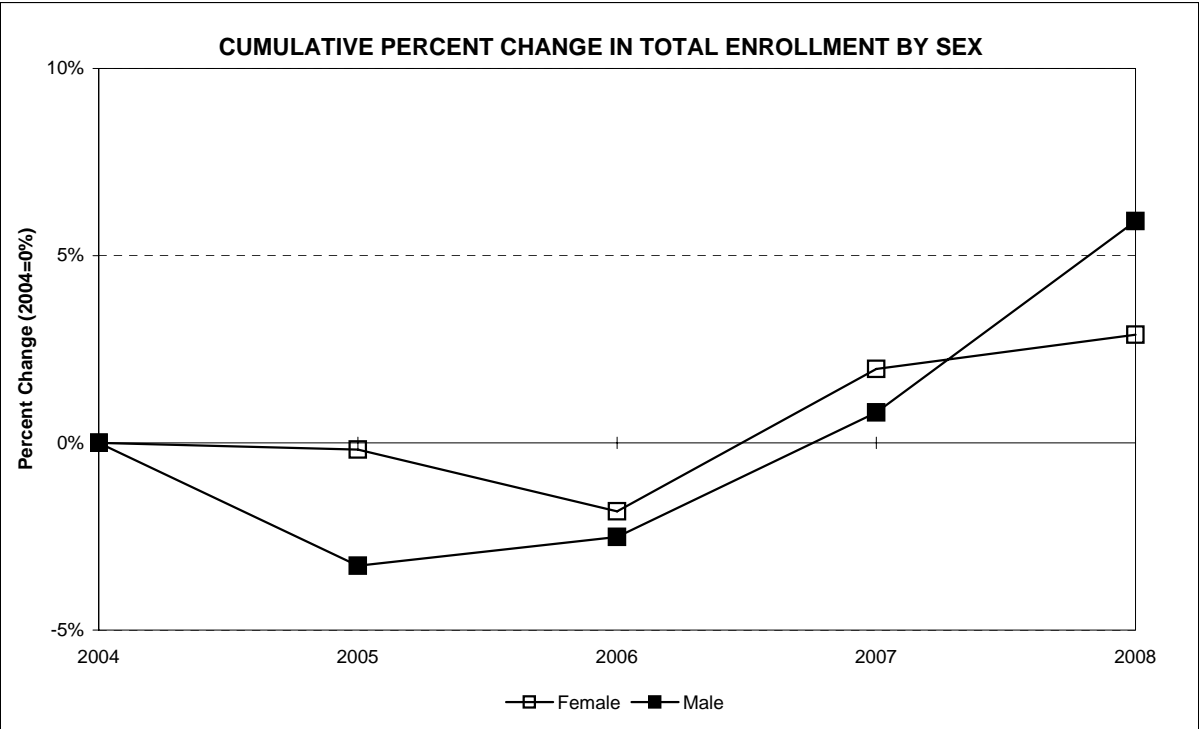
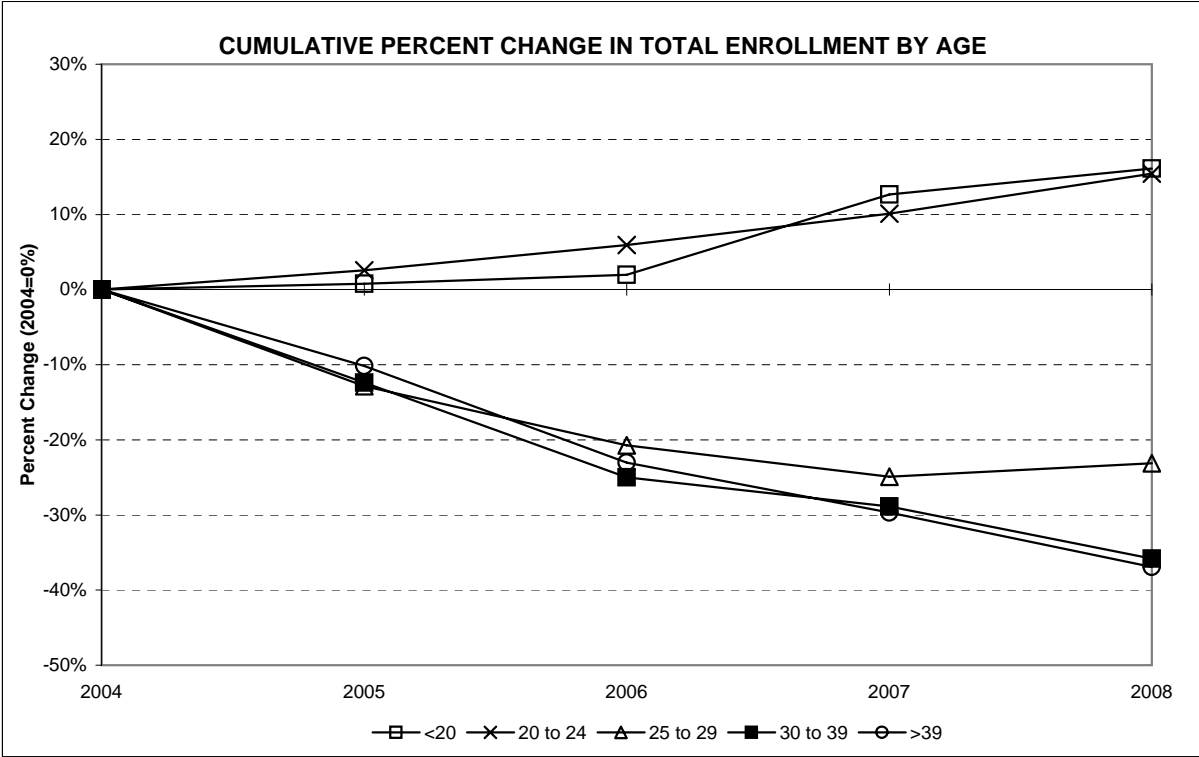


ENROLLMENT BY SEX, FALL 2004 TO FALL 2008

Undergraduate Students	Fall 2004		Fall 2005		Fall 2006		Fall 2007		Fall 2008		Pct. Change 04 to 08	Pct. Change 07 to 08
	No.	Pct.	No.	Pct.	No.	Pct.	No.	Pct.	No.	Pct.		
Female	3,139	59.5%	3,139	60.0%	3,088	59.5%	3,222	59.7%	3,271	58.8%	4.2%	1.5%
Male	2,139	40.5%	2,094	40.0%	2,100	40.5%	2,171	40.3%	2,290	41.2%	7.1%	5.5%
Total	5,278		5,233		5,188		5,393		5,561		5.4%	3.1%

Graduate Students	Fall 2004		Fall 2005		Fall 2006		Fall 2007		Fall 2008		Pct. Change 04 to 08	Pct. Change 07 to 08
	No.	Pct.	No.	Pct.	No.	Pct.	No.	Pct.	No.	Pct.		
Female	251	74.0%	245	80.3%	240	77.2%	235	76.1%	217	75.9%	-13.5%	-7.7%
Male	88	26.0%	60	19.7%	71	22.8%	74	23.9%	69	24.1%	-21.6%	-6.8%
Total	339		305		311		309		286		-15.6%	-7.4%

All Students	Fall 2004		Fall 2005		Fall 2006		Fall 2007		Fall 2008		Pct. Change 04 to 08	Pct. Change 07 to 08
	No.	Pct.	No.	Pct.	No.	Pct.	No.	Pct.	No.	Pct.		
Female	3,390	60.4%	3,384	61.1%	3,328	60.5%	3,457	60.6%	3,488	59.7%	2.9%	0.9%
Male	2,227	39.6%	2,154	38.9%	2,171	39.5%	2,245	39.4%	2,359	40.3%	5.9%	5.1%
Total	5,617		5,538		5,499		5,702		5,847		4.1%	2.5%



ENROLLMENT BY ETHNICITY, FALL 2004 TO FALL 2008

Undergraduate Students	Fall 2004		Fall 2005		Fall 2006		Fall 2007		Fall 2008		Pct. Change 04 to 08	Pct. Change 07 to 08
	No.	Pct.	No.	Pct.	No.	Pct.	No.	Pct.	No.	Pct.		
American Indian/Nat. Al.	18	0.3%	18	0.3%	16	0.3%	16	0.3%	16	0.3%	-11.1%	0.0%
Asian/Pacific Islander	278	5.3%	261	5.0%	257	5.0%	265	4.9%	291	5.2%	4.7%	9.8%
Black, non-Hispanic	349	6.6%	354	6.8%	332	6.4%	338	6.3%	356	6.4%	2.0%	5.3%
Hispanic	418	7.9%	417	8.0%	431	8.3%	469	8.7%	491	8.8%	17.5%	4.7%
White, non-Hispanic	4,215	79.9%	4,183	79.9%	4,152	80.0%	4,305	79.8%	4,396	79.2%	4.3%	2.1%
Missing	0	N/A	0	N/A	0	N/A	0	N/A	11	N/A	N/A	N/A
Total	5,278		5,233		5,188		5,393		5,561		5.4%	3.1%

Graduate Students	Fall 2004		Fall 2005		Fall 2006		Fall 2007		Fall 2008		Pct. Change 04 to 08	Pct. Change 07 to 08
	No.	Pct.	No.	Pct.	No.	Pct.	No.	Pct.	No.	Pct.		
American Indian/Nat. Al.	1	0.3%	0	0.0%	0	0.0%	0	0.0%	0	0.0%	-100.0%	N/A
Asian/Pacific Islander	4	1.2%	9	3.0%	12	3.9%	7	2.3%	4	1.4%	0.0%	-42.9%
Black, non-Hispanic	15	4.4%	11	3.6%	18	5.8%	16	5.2%	10	3.5%	-33.3%	-37.5%
Hispanic	12	3.5%	7	2.3%	7	2.3%	11	3.6%	11	3.8%	-8.3%	0.0%
White, non-Hispanic	307	90.6%	278	91.1%	274	88.1%	275	89.0%	261	91.3%	-15.0%	-5.1%
Missing	0	N/A	0	N/A	0	N/A	0	N/A	0	N/A	N/A	N/A
Total	339		305		311		309		286		-15.6%	-7.4%

All Students	Fall 2004		Fall 2005		Fall 2006		Fall 2007		Fall 2008		Pct. Change 04 to 08	Pct. Change 07 to 08
	No.	Pct.	No.	Pct.	No.	Pct.	No.	Pct.	No.	Pct.		
American Indian/Nat. Al.	19	0.3%	18	0.3%	16	0.3%	16	0.3%	16	0.3%	-15.8%	0.0%
Asian/Pacific Islander	282	5.0%	270	4.9%	269	4.9%	272	4.8%	295	5.1%	4.6%	8.5%
Black, non-Hispanic	364	6.5%	365	6.6%	350	6.4%	354	6.2%	366	6.3%	0.5%	3.4%
Hispanic	430	7.7%	424	7.7%	438	8.0%	480	8.4%	502	8.6%	16.7%	4.6%
White, non-Hispanic	4,522	80.5%	4,461	80.6%	4,426	80.5%	4,580	80.3%	4,657	79.8%	3.0%	1.7%
Missing	0	N/A	0	N/A	0	N/A	0	N/A	11	N/A	N/A	N/A
Total	5,617		5,538		5,499		5,702		5,847		4.1%	2.5%

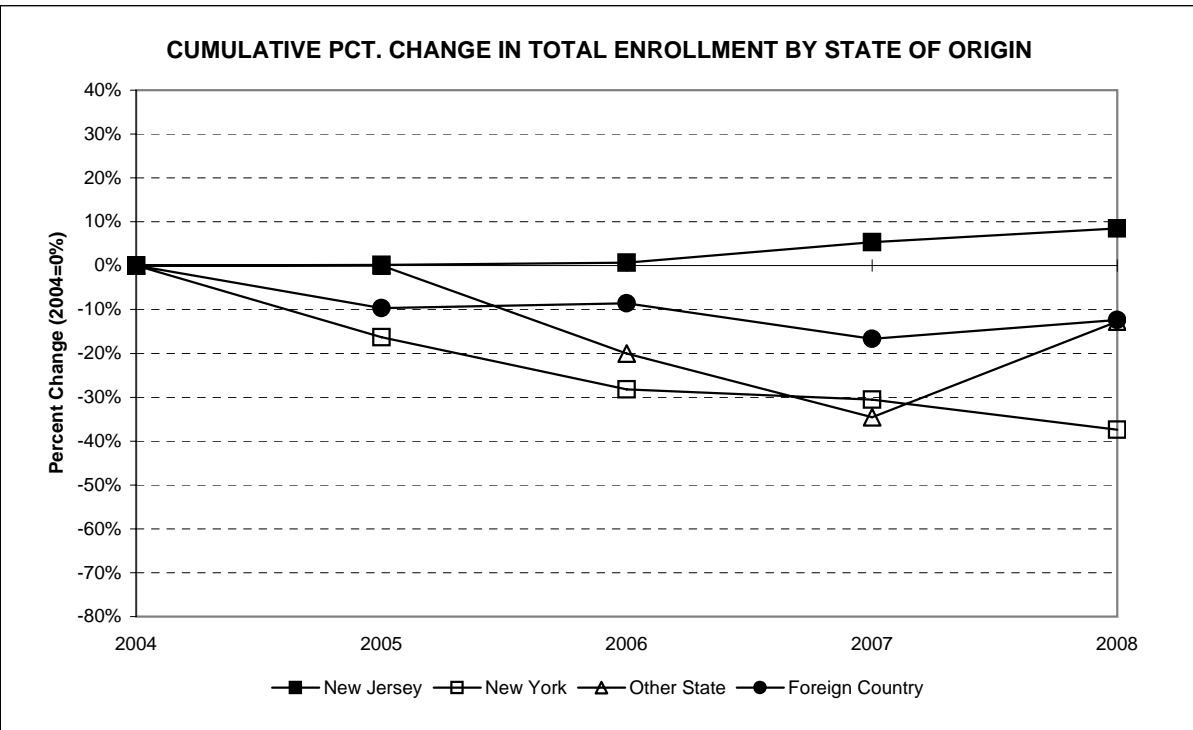
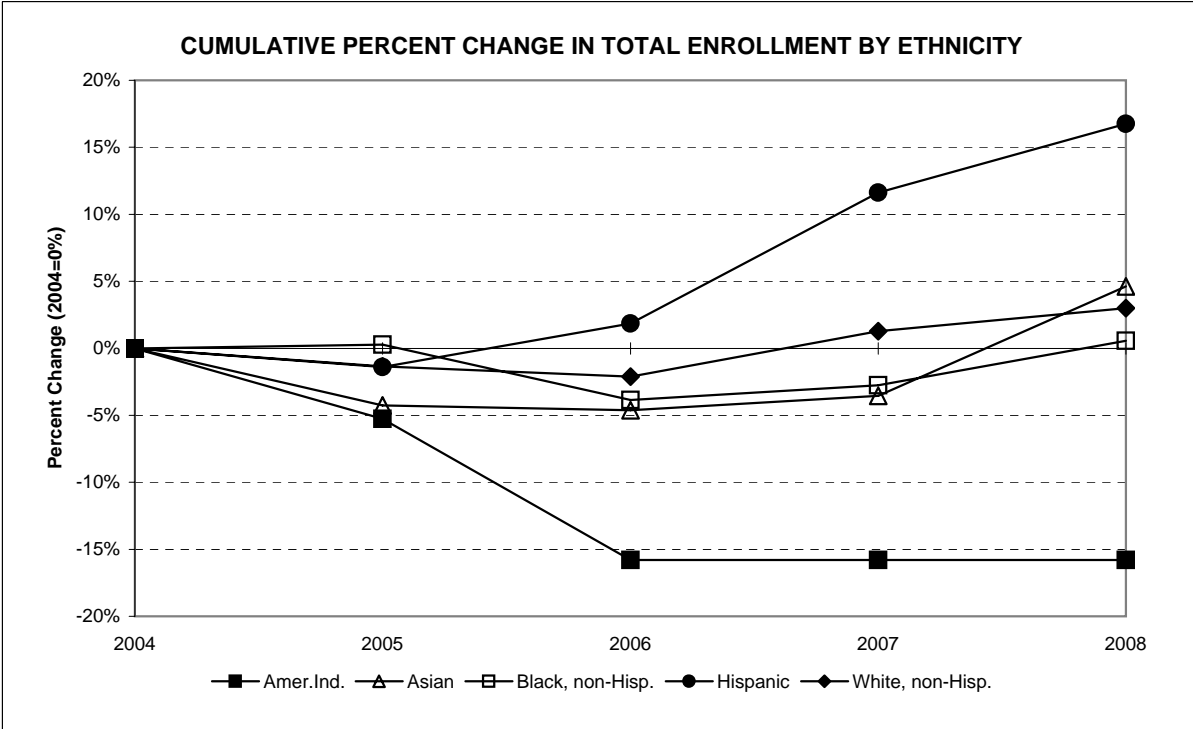


ENROLLMENT BY STATE OF ORIGIN, FALL 2004 TO FALL 2008

Undergraduate Students	Fall 2004		Fall 2005		Fall 2006		Fall 2007		Fall 2008		Pct. Change 04 to 08	Pct. Change 07 to 08
	No.	Pct.	No.	Pct.	No.	Pct.	No.	Pct.	No.	Pct.		
New Jersey	4,625	87.6%	4,668	89.2%	4,686	90.3%	4,918	91.2%	5,090	91.6%	10.1%	3.5%
New York	420	8.0%	350	6.7%	294	5.7%	291	5.4%	265	4.8%	-36.9%	-8.9%
Other U.S. State/Terr.	55	1.0%	53	1.0%	42	0.8%	33	0.6%	46	0.8%	-16.4%	39.4%
Foreign Country	178	3.4%	162	3.1%	166	3.2%	149	2.8%	158	2.8%	-11.2%	6.0%
Missing	0	N/A	0	N/A	0	N/A	2	N/A	2	N/A	N/A	N/A
Total	5,278		5,233		5,188		5,393		5,561		5.4%	3.1%

Graduate Students	Fall 2004		Fall 2005		Fall 2006		Fall 2007		Fall 2008		Pct. Change 04 to 08	Pct. Change 07 to 08
	No.	Pct.	No.	Pct.	No.	Pct.	No.	Pct.	No.	Pct.		
New Jersey	315	92.9%	282	92.5%	286	92.0%	288	93.2%	271	94.8%	-14.0%	-5.9%
New York	16	4.7%	15	4.9%	19	6.1%	12	3.9%	8	2.8%	-50.0%	-33.3%
Other U.S. State/Terr.	0	0.0%	2	0.7%	2	0.6%	3	1.0%	2	0.7%	N/A	-33.3%
Foreign Country	8	2.4%	6	2.0%	4	1.3%	6	1.9%	5	1.7%	-37.5%	-16.7%
Missing	0	N/A	0	N/A	0	N/A	0	N/A	0	N/A	N/A	N/A
Total	339		305		311		309		286		-15.6%	-7.4%

All Students	Fall 2004		Fall 2005		Fall 2006		Fall 2007		Fall 2008		Pct. Change 04 to 08	Pct. Change 07 to 08
	No.	Pct.	No.	Pct.	No.	Pct.	No.	Pct.	No.	Pct.		
New Jersey	4,940	87.9%	4,950	89.4%	4,972	90.4%	5,206	91.3%	5,361	91.7%	8.5%	3.0%
New York	436	7.8%	365	6.6%	313	5.7%	303	5.3%	273	4.7%	-37.4%	-9.9%
Other U.S. State/Terr.	55	1.0%	55	1.0%	44	0.8%	36	0.6%	48	0.8%	-12.7%	33.3%
Foreign Country	186	3.3%	168	3.0%	170	3.1%	155	2.7%	163	2.8%	-12.4%	5.2%
Missing	0	N/A	0	N/A	0	N/A	2	N/A	2	N/A	N/A	N/A
Total	5,617		5,538		5,499		5,702		5,847		4.1%	2.5%



ENROLLMENT BY ETHNICITY AND CITIZENSHIP, FALL 2004 TO FALL 2008

Undergraduate Students	Fall 2004		Fall 2005		Fall 2006		Fall 2007		Fall 2008		Pct. Change 04 to 08	Pct. Change 07 to 08
	No.	Pct.	No.	Pct.	No.	Pct.	No.	Pct.	No.	Pct.		
American Indian/Nat. Al.	18	0.3%	18	0.3%	16	0.3%	16	0.3%	16	0.3%	-11.1%	0.0%
Asian/Pacific Islander	214	4.1%	219	4.2%	219	4.2%	229	4.2%	260	4.7%	21.5%	13.5%
Black, non-Hispanic	320	6.1%	326	6.2%	307	5.9%	314	5.8%	340	6.1%	6.3%	8.3%
Hispanic	408	7.7%	408	7.8%	419	8.1%	462	8.6%	477	8.6%	16.9%	3.2%
White, non-Hispanic	4,118	78.0%	4,104	78.4%	4,061	78.3%	4,223	78.3%	4,299	77.5%	4.4%	1.8%
Nonresident Alien	200	3.8%	158	3.0%	166	3.2%	149	2.8%	158	2.8%	-21.0%	6.0%
Missing	0	N/A	0	N/A	0	N/A	0	N/A	11	N/A	N/A	N/A
Total	5,278		5,233		5,188		5,393		5,561		5.4%	3.1%

Graduate Students	Fall 2004		Fall 2005		Fall 2006		Fall 2007		Fall 2008		Pct. Change 04 to 08	Pct. Change 07 to 08
	No.	Pct.	No.	Pct.	No.	Pct.	No.	Pct.	No.	Pct.		
American Indian/Nat. Al.	1	0.3%	0	0.0%	0	0.0%	0	0.0%	0	0.0%	N/A	N/A
Asian/Pacific Islander	3	0.9%	8	2.6%	11	3.5%	6	1.9%	3	1.0%	0.0%	-50.0%
Black, non-Hispanic	15	4.4%	10	3.3%	18	5.8%	16	5.2%	10	3.5%	-33.3%	-37.5%
Hispanic	12	3.5%	7	2.3%	7	2.3%	11	3.6%	11	3.8%	-8.3%	0.0%
White, non-Hispanic	302	89.1%	276	90.5%	271	87.1%	270	87.4%	257	89.9%	-14.9%	-4.8%
Nonresident Alien	6	1.8%	4	1.3%	4	1.3%	6	1.9%	5	1.7%	-16.7%	-16.7%
Missing	0	N/A	0	N/A	0	N/A	0	N/A	0	N/A	N/A	N/A
Total	339		305		311		309		286		-15.6%	-7.4%

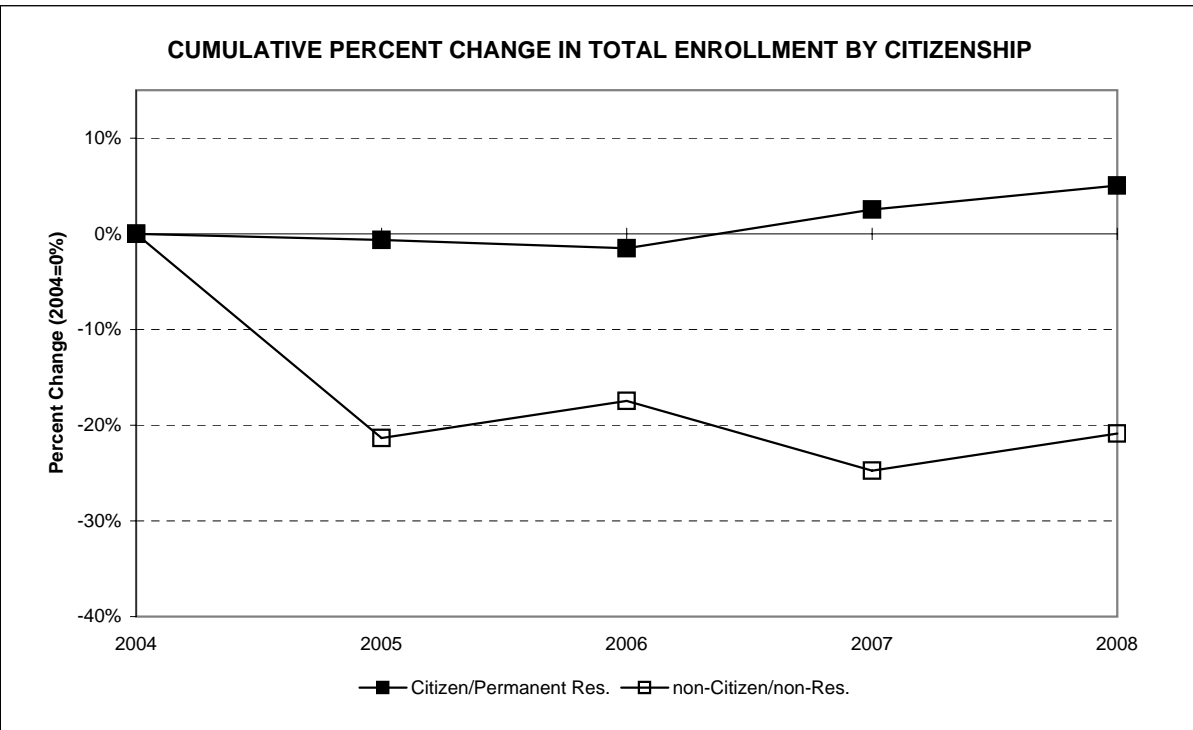
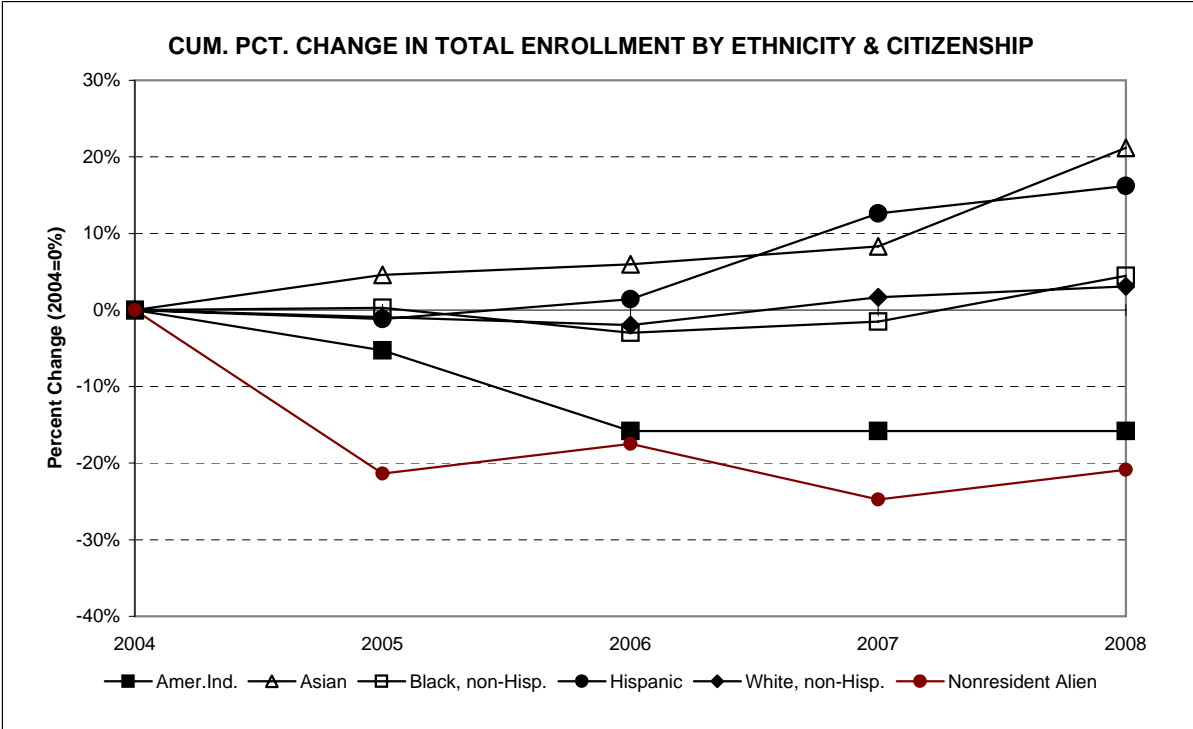
All Students	Fall 2004		Fall 2005		Fall 2006		Fall 2007		Fall 2008		Pct. Change 04 to 08	Pct. Change 07 to 08
	No.	Pct.	No.	Pct.	No.	Pct.	No.	Pct.	No.	Pct.		
American Indian/Nat. Al.	19	0.3%	18	0.3%	16	0.3%	16	0.3%	16	0.3%	-15.8%	0.0%
Asian/Pacific Islander	217	3.9%	227	4.1%	230	4.2%	235	4.1%	263	4.5%	21.2%	11.9%
Black, non-Hispanic	335	6.0%	336	6.1%	325	5.9%	330	5.8%	350	6.0%	4.5%	6.1%
Hispanic	420	7.5%	415	7.5%	426	7.7%	473	8.3%	488	8.4%	16.2%	3.2%
White, non-Hispanic	4,420	78.7%	4,380	79.1%	4,332	78.8%	4,493	78.8%	4,556	78.1%	3.1%	1.4%
Nonresident Alien	206	3.7%	162	2.9%	170	3.1%	155	2.7%	163	2.8%	-20.9%	5.2%
Missing	0	N/A	0	N/A	0	N/A	0	N/A	11	N/A	N/A	N/A
Total	5,617		5,538		5,499		5,702		5,847		4.1%	2.5%

ENROLLMENT BY CITIZENSHIP, FALL 2004 TO FALL 2008

Undergraduate Students	Fall 2004		Fall 2005		Fall 2006		Fall 2007		Fall 2008		Pct. Change 04 to 08	Pct. Change 07 to 08
	No.	Pct.	No.	Pct.	No.	Pct.	No.	Pct.	No.	Pct.		
Citizen/Permanent Res.	5,078	96.2%	5,075	97.0%	5,022	96.8%	5,244	97.2%	5,403	97.2%	6.4%	3.0%
non-Citizen/non-Res.	200	3.8%	158	3.0%	166	3.2%	149	2.8%	158	2.8%	-21.0%	6.0%
Total	5,278		5,233		5,188		5,393		5,561		5.4%	3.1%

Graduate Students	Fall 2004		Fall 2005		Fall 2006		Fall 2007		Fall 2008		Pct. Change 04 to 08	Pct. Change 07 to 08
	No.	Pct.	No.	Pct.	No.	Pct.	No.	Pct.	No.	Pct.		
Citizen/Permanent Res.	333	98.2%	301	98.7%	307	98.7%	303	98.1%	281	98.3%	-15.6%	-7.3%
non-Citizen/non-Res.	6	1.8%	4	1.3%	4	1.3%	6	1.9%	5	1.7%	-16.7%	-16.7%
Total	339		305		311		309		286		-15.6%	-7.4%

All Students	Fall 2004		Fall 2005		Fall 2006		Fall 2007		Fall 2008		Pct. Change 04 to 08	Pct. Change 07 to 08
	No.	Pct.	No.	Pct.	No.	Pct.	No.	Pct.	No.	Pct.		
Citizen/Permanent Res.	5,411	96.3%	5,376	97.1%	5,329	96.9%	5,547	97.3%	5,684	97.2%	5.0%	2.5%
non-Citizen/non-Res.	206	3.7%	162	2.9%	170	3.1%	155	2.7%	163	2.8%	-20.9%	5.2%
Total	5,617		5,538		5,499		5,702		5,847		4.1%	2.5%



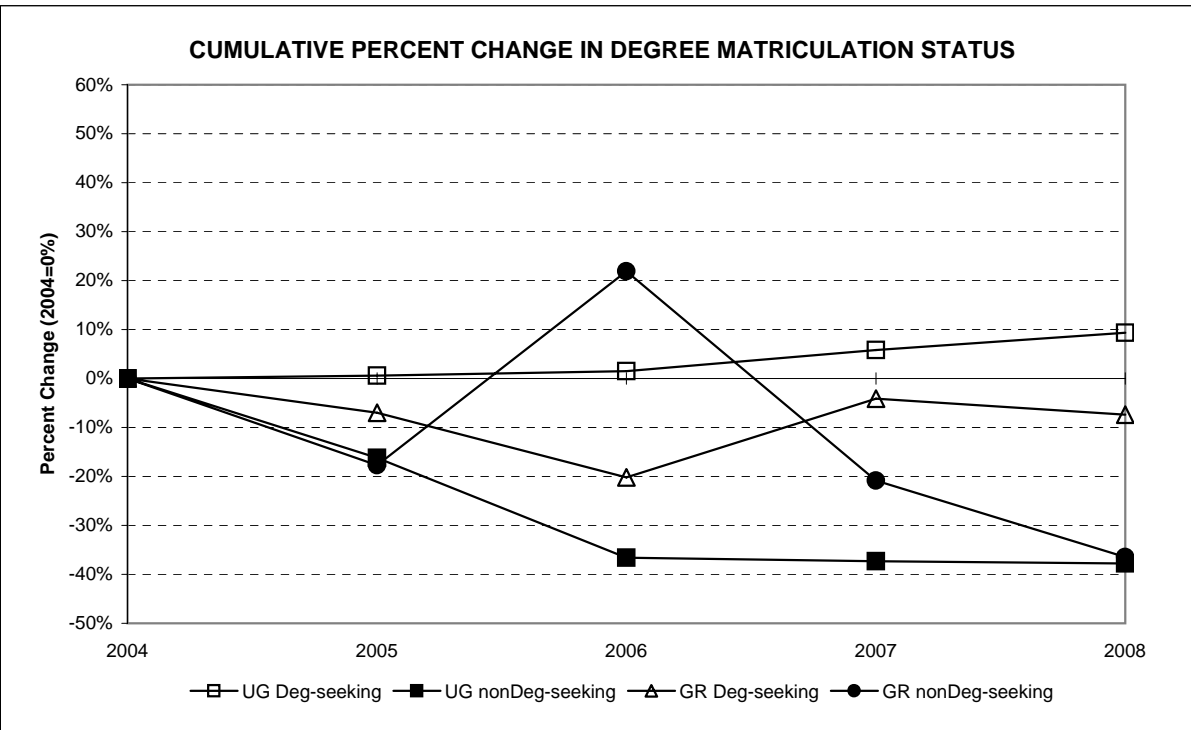
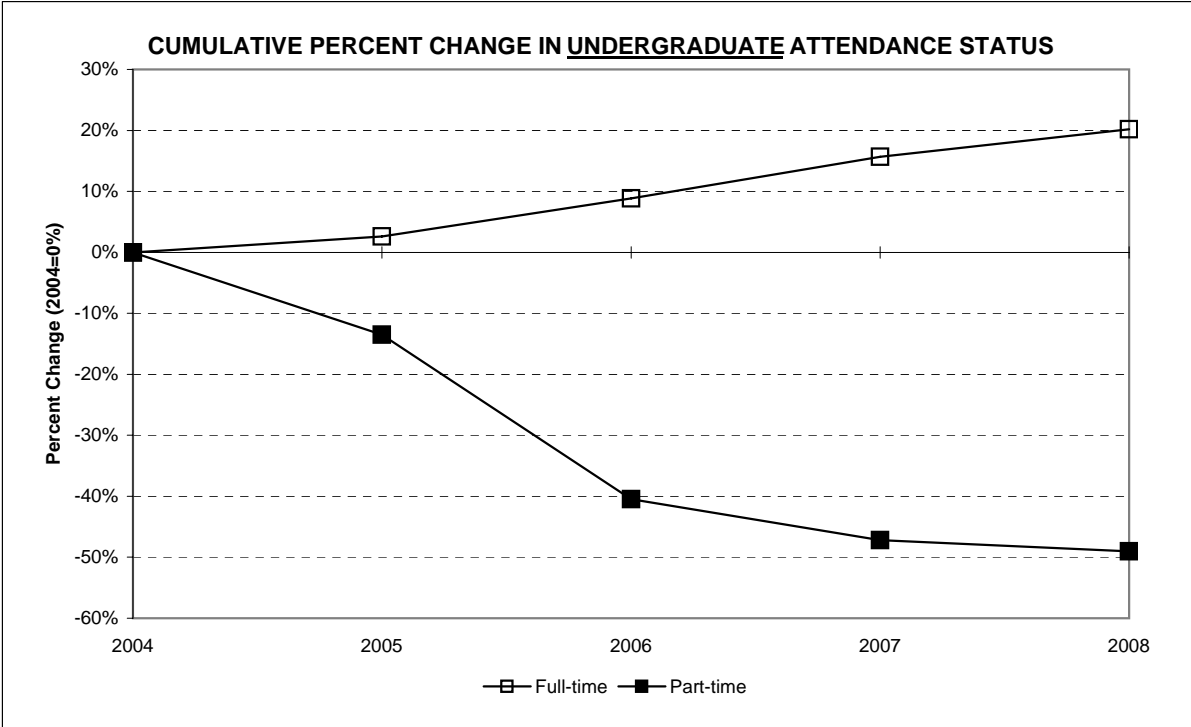
ENROLLMENT BY ATTENDANCE STATUS, FALL 2004 TO FALL 2008

	Fall 2004		Fall 2005		Fall 2006		Fall 2007		Fall 2008		Pct. Change 04 to 08	Pct. Change 07 to 08
	No.	Pct.	No.	Pct.	No.	Pct.	No.	Pct.	No.	Pct.		
Undergraduate Students												
Full-time	4,146	78.6%	4,254	81.3%	4,514	87.0%	4,795	88.9%	4,984	89.6%	20.2%	3.9%
Part-time	1,132	21.4%	979	18.7%	674	13.0%	598	11.1%	577	10.4%	-49.0%	-3.5%
Total	5,278		5,233		5,188		5,393		5,561		5.4%	3.1%
Graduate Students												
Full-time	16	4.7%	13	4.3%	5	1.6%	6	1.9%	11	3.8%	-31.3%	83.3%
Part-time	323	95.3%	292	95.7%	306	98.4%	303	98.1%	275	96.2%	-14.9%	-9.2%
Total	339		305		311		309		286		-15.6%	-7.4%
All Students												
Full-time	4,162	74.1%	4,267	77.0%	4,519	82.2%	4,801	84.2%	4,995	85.4%	20.0%	4.0%
Part-time	1,455	25.9%	1,271	23.0%	980	17.8%	901	15.8%	852	14.6%	-41.4%	-5.4%
Total	5,617		5,538		5,499		5,702		5,847		4.1%	2.5%



ENROLLMENT BY MATRICULATION STATUS, FALL 2004 TO FALL 2008

	Fall 2004		Fall 2005		Fall 2006		Fall 2007		Fall 2008		Pct. Change 04 to 08	Pct. Change 07 to 08
	No.	Pct.	No.	Pct.	No.	Pct.	No.	Pct.	No.	Pct.		
Undergraduate Students												
Degree-seeking	4,833	91.6%	4,860	92.9%	4,906	94.6%	5,114	94.8%	5,284	95.0%	9.3%	3.3%
Nondegree-seeking	445	8.4%	373	7.1%	282	5.4%	279	5.2%	277	5.0%	-37.8%	-0.7%
Total	5,278		5,233		5,188		5,393		5,561		5.4%	3.1%
Graduate Students												
Degree-seeking	243	71.7%	226	74.1%	194	62.4%	233	75.4%	225	78.7%	-7.4%	-3.4%
Nondegree-seeking	96	28.3%	79	25.9%	117	37.6%	76	24.6%	61	21.3%	-36.5%	-19.7%
Total	339		305		311		309		286		-15.6%	-7.4%
All Students												
Degree-seeking	5,076	90.4%	5,086	91.8%	5,100	92.7%	5,347	93.8%	5,509	94.2%	8.5%	3.0%
Nondegree-seeking	541	9.6%	452	8.2%	399	7.3%	355	6.2%	338	5.8%	-37.5%	-4.8%
Total	5,617		5,538		5,499		5,702		5,847		4.1%	2.5%



ENROLLMENT BY VETERAN STATUS, FALL 2004 TO FALL 2008

All Students	Fall 2004		Fall 2005		Fall 2006		Fall 2007		Fall 2008		Pct. Change 04 to 08	Pct. Change 07 to 08
	No.	Pct.	No.	Pct.	No.	Pct.	No.	Pct.	No.	Pct.		
Veteran	29	0.5%	29	0.5%	11	0.2%	24	0.4%	13	0.2%	-55.2%	-45.8%
Depend of Dec'd. Vet.	1	0.0%	1	0.0%	0	0.0%	0	0.0%	0	0.0%	N/A	N/A
Non-Veteran	5,587	99.5%	5,508	99.5%	5,488	99.8%	5,678	99.6%	5,834	99.8%	4.4%	2.7%
Total	5,617		5,538		5,499		5,702		5,847		4.1%	2.5%

ENROLLMENT BY DISABILITY STATUS, FALL 2004 TO FALL 2008

All Students	Fall 2004		Fall 2005		Fall 2006		Fall 2007		Fall 2008		Pct. Change 04 to 08	Pct. Change 07 to 08
	No.	Pct.	No.	Pct.	No.	Pct.	No.	Pct.	No.	Pct.		
Disabled	198	3.5%	184	3.3%	198	3.6%	231	4.1%	246	4.2%	24.2%	6.5%
Not Disabled	5,419	96.5%	5,354	96.7%	5,301	96.4%	5,471	95.9%	5,601	95.8%	3.4%	2.4%
Missing	0	N/A	0	N/A	0	N/A	0	N/A	0	N/A	N/A	N/A
Total	5,617		5,538		5,499		5,702		5,847		4.1%	2.5%

UNDERGRADUATE ENROLLMENT BY CLASS RANK, FALL 2004 TO FALL 2008

Undergraduate Students	Fall 2004		Fall 2005		Fall 2006		Fall 2007		Fall 2008		Pct. Change 04 to 08	Pct. Change 07 to 08
	No.	Pct.	No.	Pct.	No.	Pct.	No.	Pct.	No.	Pct.		
Freshmen	1,031	21.3%	1,014	20.9%	1,263	25.7%	1,369	26.8%	1,581	28.4%	53.3%	15.5%
Sophomores	963	19.9%	967	19.9%	1,137	23.2%	1,141	22.3%	1,210	21.8%	25.6%	6.0%
Juniors	1,227	25.4%	1,223	25.2%	1,351	27.5%	1,365	26.7%	1,450	26.1%	18.2%	6.2%
Seniors	1,612	33.4%	1,656	34.1%	1,155	23.5%	1,239	24.2%	1,320	23.7%	-18.1%	6.5%
Unclassified/nonDeg.	445	N/A	373	N/A	282	N/A	279	N/A	0	N/A	N/A	N/A
Total	5,278		5,233		5,188		5,393		5,561		5.4%	3.1%

UNDERGRADUATE ENROLLMENT BY SPECIAL PROGRAM STATUS, FALL 2004 TO FALL 2008

Undergraduate Students	Fall 2004		Fall 2005		Fall 2006		Fall 2007		Fall 2008		Pct. Change 04 to 08	Pct. Change 07 to 08
	No.	Pct.	No.	Pct.	No.	Pct.	No.	Pct.	No.	Pct.		
EOF	303	5.7%	293	5.6%	307	5.9%	302	5.6%	309	5.6%	2.0%	2.3%
EOF Honor's Program	2	0.0%	0	0.0%	0	0.0%	1	0.0%	1	0.0%	-50.0%	N/A
Honor's Program	54	1.0%	50	1.0%	98	1.9%	146	2.7%	183	3.3%	238.9%	25.3%
No Spec. Prog. Desig.	4,919	93.2%	4,890	93.4%	4,783	92.2%	4,944	91.7%	5,068	91.1%	3.0%	2.5%
Total	5,278		5,233		5,188		5,393		5,561		5.4%	3.1%

All Students	Fall 2004		Fall 2005		Fall 2006 ^[1]		Fall 2007		Fall 2008		Pct. Change	Pct. Change
	No.	Pct.	No.	Pct.	No.	Pct.	No.	Pct.	No.	Pct.	04 to 08	07 to 08
Atlantic	19	0.3%	16	0.3%	14	0.3%	13	0.2%	12	0.2%	-36.8%	-7.7%
Bergen	2,001	35.6%	1,904	34.4%	1,846	33.6%	1,955	34.3%	2,063	35.3%	3.1%	5.5%
Burlington	45	0.8%	43	0.8%	46	0.8%	54	0.9%	60	1.0%	33.3%	11.1%
Camden	42	0.7%	44	0.8%	50	0.9%	47	0.8%	45	0.8%	7.1%	-4.3%
Cape May	9	0.2%	9	0.2%	9	0.2%	12	0.2%	12	0.2%	33.3%	0.0%
Cumberland	7	0.1%	9	0.2%	11	0.2%	9	0.2%	7	0.1%	0.0%	-22.2%
Essex	164	2.9%	161	2.9%	184	3.3%	194	3.4%	207	3.5%	26.2%	6.7%
Gloucester	37	0.7%	35	0.6%	26	0.5%	29	0.5%	24	0.4%	-35.1%	-17.2%
Hudson	130	2.3%	133	2.4%	132	2.4%	127	2.2%	141	2.4%	8.5%	11.0%
Hunterdon	66	1.2%	65	1.2%	54	1.0%	60	1.1%	54	0.9%	-18.2%	-10.0%
Mercer	40	0.7%	43	0.8%	52	0.9%	42	0.7%	40	0.7%	0.0%	-4.8%
Middlesex	402	7.2%	418	7.5%	452	8.2%	429	7.5%	382	6.5%	-5.0%	-11.0%
Monmouth	305	5.4%	358	6.5%	390	7.1%	432	7.6%	444	7.6%	45.6%	2.8%
Morris	293	5.2%	302	5.5%	318	5.8%	344	6.0%	381	6.5%	30.0%	10.8%
Ocean	260	4.6%	267	4.8%	252	4.6%	236	4.1%	233	4.0%	-10.4%	-1.3%
Passaic	625	11.1%	603	10.9%	585	10.6%	644	11.3%	682	11.7%	9.1%	5.9%
Salem	2	0.0%	1	0.0%	2	0.0%	4	0.1%	2	0.0%	0.0%	-50.0%
Somerset	87	1.5%	99	1.8%	91	1.7%	96	1.7%	87	1.5%	0.0%	-9.4%
Sussex	213	3.8%	233	4.2%	256	4.7%	274	4.8%	278	4.8%	30.5%	1.5%
Union	124	2.2%	133	2.4%	130	2.4%	142	2.5%	146	2.5%	17.7%	2.8%
Warren	65	1.2%	73	1.3%	71	1.3%	60	1.1%	60	1.0%	-7.7%	0.0%
Orange, NY	85	1.5%	60	1.1%	89	1.6%	91	1.6%	72	1.2%	-15.3%	-20.9%
Rockland, NY	282	5.0%	239	4.3%	174	3.2%	164	2.9%	162	2.8%	-42.6%	-1.2%
Westchester, NY	4	0.1%	7	0.1%	13	0.2%	7	0.1%	3	0.1%	-25.0%	-57.1%
Out of State/Other	310	5.5%	283	5.1%	252	4.6%	237	4.2%	250	4.3%	-19.4%	5.5%
Total	5,617		5,538		5,499		5,702		5,847		4.1%	2.5%

[1] Fall 2006 distribution revised on 11/07.

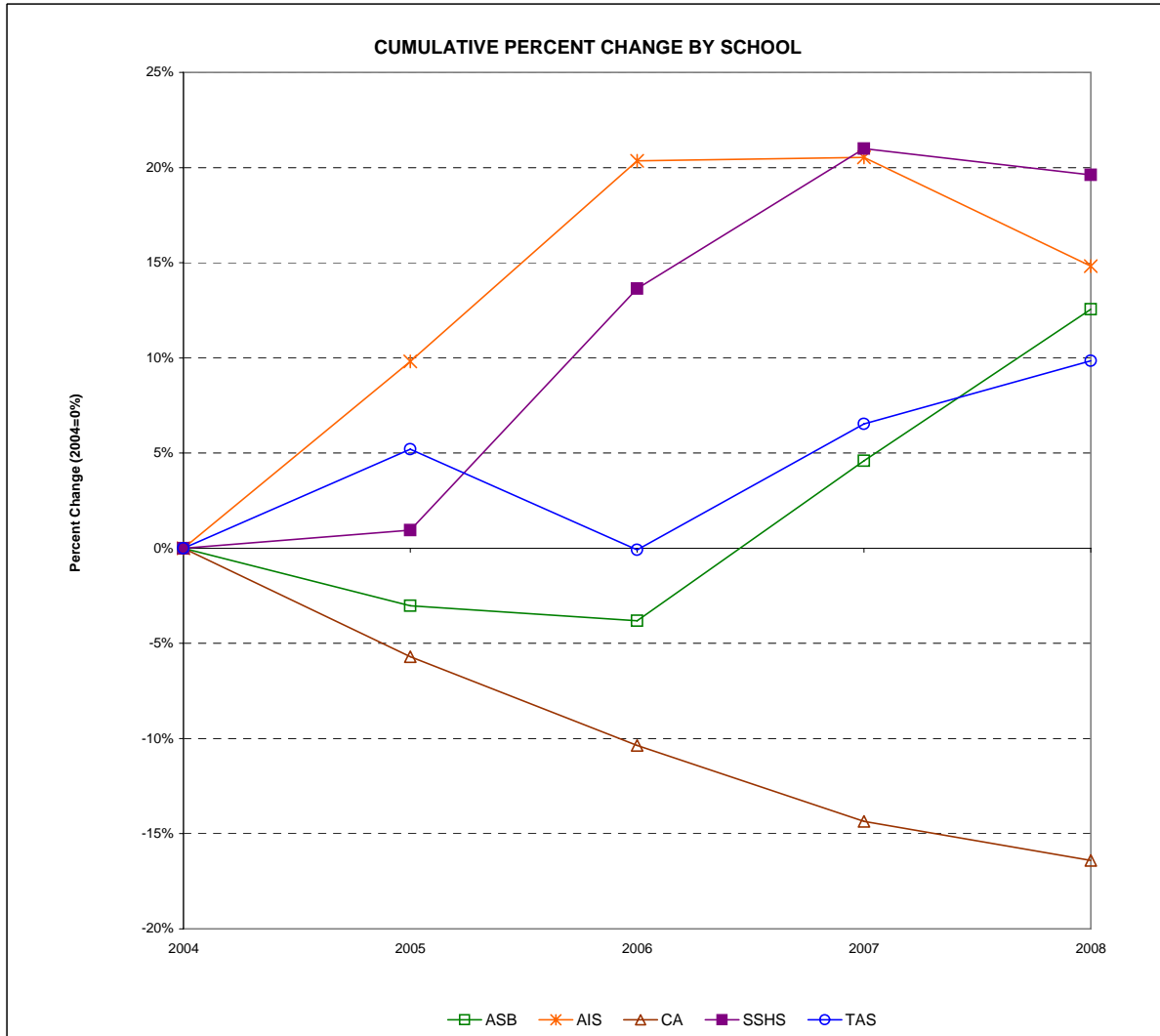
Non-Citizen Enrollment by Country of Origin, Fall 2004 to Fall 2008

Country	Fall 2004		Fall 2005		Fall 2006		Fall 2007		Fall 2008		Country	Fall 2004		Fall 2005		Fall 2006		Fall 2007		Fall 2008		
	No.	Pct.	No.	Pct.	No.	Pct.	No.	Pct.	No.	Pct.		No.	Pct.	No.	Pct.	No.	Pct.	No.	Pct.	No.	Pct.	
Afghanistan							1	0.6%	1	0.6%	Ivory Coast											
Albania	2	1.0%	1	0.6%							Jamaica	1	0.5%	3	1.9%	3	1.8%	3	1.9%	2	1.2%	
Argentina	2	1.0%	2	1.2%	2	1.2%	1	0.6%	1	0.6%	Japan	9	4.4%	7	4.3%	8	4.7%	4	2.6%	1	0.6%	
Armenia							1	0.6%	1	0.6%	Kampuchea			1	0.6%							
Australia									2	1.2%	Kenya	5	2.4%	3	1.9%	3	1.8%	5	3.2%	2	1.2%	
Austria	2	1.0%					1	0.6%	2	1.2%	Lebanon							1	0.6%	1	0.6%	
Bahamas	6	2.9%	7	4.3%	6	3.5%	4	2.6%			Liberia											
Bahrain					2	1.2%	1	0.6%	1	0.6%	Lithuania											
Bangladesh					1	0.6%	1	0.6%	1	0.6%	(FYRO) Macedonia	1	0.5%	1	0.6%			2	1.3%	2	1.2%	
Bolivia											Malaysia	2	1.0%	2	1.2%					1	0.6%	
Bosnia-Herzegovina	1	0.5%								Mauritius	2	1.0%	2	1.2%	1	0.6%	1	0.6%				
Brazil	2	1.0%	6	3.7%	5	2.9%	3	1.9%	7	4.3%	Mexico	4	1.9%							1	0.6%	
British Virgin Islands	1	0.5%								Moldova					1	0.6%						
Bulgaria	35	17.0%	30	18.5%	38	22.4%	38	24.5%	33	20.2%	Mongolia	2	1.0%	2	1.2%	1	0.6%	1	0.6%	2	1.2%	
Burma										Morocco	1	0.5%			1	0.6%	1	0.6%				
Cambodia	1	0.5%			1	0.6%				Nepal	1	0.5%	2	1.2%	1	0.6%						
Canada	3	1.5%	2	1.2%	2	1.2%	1	0.6%	1	0.6%	Netherlands	1	0.5%			1	0.6%					
Taiwan (China, Nationalist)	2	1.0%	1	0.6%					1	0.6%	Nigeria	6	2.9%	6	3.7%	4	2.4%	6	3.9%	8	4.9%	
China, People's Republic	4	1.9%	1	0.6%	1	0.6%	2	1.3%	2	1.2%	Norway									1	0.6%	
Colombia	1	0.5%	1	0.6%	1	0.6%	1	0.6%	2	1.2%	Oman									1	0.6%	
Costa Rica					1	0.6%			1	0.6%	Pakistan	9	4.4%	5	3.1%	3	1.8%	3	1.9%	1	0.6%	
Croatia	1	0.5%	2	1.2%	2	1.2%	2	1.3%	2	1.2%	Panama			2	1.2%	1	0.6%				1	0.6%
Cyprus											Peru	2	1.0%	2	1.2%	2	1.2%	1	0.6%	1	0.6%	
Czech Republic	2	1.0%								Philippines	2	1.0%	1	0.6%	2	1.2%	3	1.9%	4	2.5%		
Denmark			1	0.6%					1	0.6%	Poland	10	4.9%	7	4.3%	9	5.3%	6	3.9%	4	2.5%	
Dominican Republic	2	1.0%	1	0.6%						Portugal	1	0.5%	1	0.6%								
Ecuador			1	0.6%	1	0.6%				Romania	1	0.5%	2	1.2%	2	1.2%	2	1.3%	2	1.2%		
Egypt	2	1.0%	1	0.6%			1	0.6%		Russia	3	1.5%	3	1.9%	7	4.1%	4	2.6%	4	2.5%		
El Salvador					1	0.6%	1	0.6%	1	0.6%	Serbia-Montenegro										1	0.6%
Estonia	2	1.0%	1	0.6%	1	0.6%	1	0.6%		St. Vincent/Gren.	1	0.5%			1	0.6%	1	0.6%	1	0.6%		
Ethiopia	1	0.5%	1	0.6%	2	1.2%	1	0.6%	1	0.6%	Slovak Republic	1	0.5%	1	0.6%	1	0.6%	1	0.6%	1	0.6%	
Fiji										South Africa	3	1.5%	1	0.6%	2	1.2%	1	0.6%	1	0.6%		
France	3	1.5%	2	1.2%	2	1.2%	1	0.6%	3	1.8%	South Korea	14	6.8%	6	3.7%	11	6.5%	10	6.5%	7	4.3%	
Germany	6	2.9%	6	3.7%	11	6.5%	5	3.2%	22	13.5%	Spain			1	0.6%	2	1.2%	1	0.6%	1	0.6%	
Ghana	1	0.5%	2	1.2%						Sri Lanka	2	1.0%	1	0.6%	1	0.6%	1	0.6%				
Guyana	1	0.5%	1	0.6%						Sweden	2	1.0%	2	1.2%	1	0.6%					4	2.5%
Haiti	1	0.5%					1	0.6%		Switzerland	2	1.0%	1	0.6%								
Hong Kong	1	0.5%	1	0.6%						Tanzania	3	1.5%	2	1.2%	1	0.6%	1	0.6%				
Hungary	2	1.0%	2	1.2%			1	0.6%	1	0.6%	Trinidad & Tobago	4	1.9%	6	3.7%	7	4.1%	9	5.8%	5	3.1%	
Iceland										Turkey	2	1.0%	1	0.6%			2		3	1.8%		
India	10	4.9%	7	4.3%	4	2.4%	6	3.9%	6	3.7%	Uganda			1	0.6%	1	0.6%					
Indonesia					1		1	0.6%	1	0.6%	Ukraine	3	1.5%	1	0.6%	1	0.6%					
Iran							1	0.6%			United Kingdom											
Iraq					2		2	1.3%	2	1.2%	Venezuela	1	0.5%									
Israel			1	0.6%	2	1.2%	3	1.9%	3	1.8%	Yugoslavia	7	3.4%	3	1.9%	2	1.2%	1	0.6%			
Italy			1	0.6%			2	1.3%	1	0.6%	Zambia	1	0.5%	1	0.6%							
TOTAL											TOTAL	206		162		170		155		163		

TOTAL FALL 2008 ENROLLMENT = 5,847

MATRICULATED UNDERGRADUATE ENROLLMENT BY SCHOOL, FALL 2004 TO FALL 2008

Schools	Fall 2004		Fall 2005		Fall 2006		Fall 2007		Fall 2008		Percent Change 04 to 08	Percent Change 07 to 08
	No.	Pct.	No.	Pct.	No.	Pct.	No.	Pct.	No.	Pct.		
Anisfield School of Business	1,155	23.9%	1,120	23.0%	1,111	22.6%	1,208	23.6%	1,300	24.6%	12.6%	7.6%
American & Int'l Studies	560	11.6%	615	12.7%	674	13.7%	675	13.2%	643	12.2%	14.8%	-4.7%
Contemporary Arts	878	18.2%	828	17.0%	787	16.0%	752	14.7%	734	13.9%	-16.4%	-2.4%
Soc. Science & Human Services	953	19.7%	962	19.8%	1,083	22.1%	1,153	22.5%	1,140	21.6%	19.6%	-1.1%
Theoretical & Applied Science	1,117	23.1%	1,175	24.2%	1,116	22.7%	1,190	23.3%	1,227	23.2%	9.8%	3.1%
School Undecided	170	3.5%	160	3.3%	135	2.8%	136	2.7%	240	4.5%	41.2%	76.5%
Total	4,833		4,860		4,906		5,114		5,284		9.3%	3.3%



TOTAL FALL 2008 ENROLLMENT = 5,847

MATRICULATED UNDERGRADUATE ENROLLMENT BY SCHOOL AND MAJOR, FALL 2004 TO FALL 2008

Majors	Fall 2004		Fall 2005		Fall 2006		Fall 2007		Fall 2008		Percent Change 04 to 08	Percent Change 07 to 08
	No.	Pct.	No.	Pct.	No.	Pct.	No.	Pct.	No.	Pct.		
ASB Accounting	202	4.2%	232	4.8%	205	4.2%	204	4.0%	232	4.4%	14.9%	13.7%
Business Administration	549	11.4%	570	11.7%	575	11.7%	636	12.4%	752	14.2%	37.0%	18.2%
Economics	35	0.7%	25	0.5%	32	0.7%	32	0.6%	28	0.5%	-20.0%	-12.5%
Information Systems	138	2.9%	92	1.9%	74	1.5%	73	1.4%	59	1.1%	-57.2%	-19.2%
International Business	89	1.8%	63	1.3%	70	1.4%	71	1.4%	67	1.3%	-24.7%	-5.6%
Undecided Major	142	2.9%	138	2.8%	155	3.2%	192	3.8%	162	3.1%	14.1%	-15.6%
AIS American Studies	17	0.4%	24	0.5%	33	0.7%	30	0.6%	31	0.6%	82.4%	3.3%
History	129	2.7%	152	3.1%	237	4.8%	233	4.6%	233	4.4%	80.6%	0.0%
International Studies	49	1.0%	44	0.9%	53	1.1%	59	1.2%	55	1.0%	12.2%	-6.8%
Law and Society ^[1]	50	1.0%	46	0.9%	1	0.0%	-	-	-	-	N/A	N/A
Liberal Studies	-	-	-	-	-	-	-	-	7	0.1%	N/A	N/A
Literature	210	4.3%	205	4.2%	218	4.4%	208	4.1%	199	3.8%	-5.2%	-4.3%
Political Science	71	1.5%	90	1.9%	72	1.5%	77	1.5%	59	1.1%	-16.9%	-23.4%
Spanish	5	0.1%	18	0.4%	24	0.5%	22	0.4%	24	0.5%	380.0%	9.1%
Undecided Major	29	0.6%	36	0.7%	36	0.7%	46	0.9%	35	0.7%	20.7%	-23.9%
CA Communication Arts	514	10.6%	485	10.0%	443	9.0%	391	7.6%	404	7.6%	-21.4%	3.3%
Contemporary Arts	63	1.3%	67	1.4%	86	1.8%	66	1.3%	61	1.2%	-3.2%	-7.6%
Music	44	0.9%	47	1.0%	62	1.3%	71	1.4%	70	1.3%	59.1%	-1.4%
Theater	60	1.2%	52	1.1%	41	0.8%	54	1.1%	50	0.9%	-16.7%	-7.4%
Visual Arts	123	2.5%	109	2.2%	111	2.3%	122	2.4%	117	2.2%	-4.9%	-4.1%
Undecided Major	74	1.5%	68	1.4%	44	0.9%	48	0.9%	32	0.6%	-56.8%	-33.3%
SSHS Economics ^[1]	7	0.1%	3	0.1%	-	-	-	-	-	-	N/A	N/A
Environmental Studies	10	0.2%	10	0.2%	40	0.8%	40	0.8%	42	0.8%	320.0%	5.0%
History ^[1]	43	0.9%	48	1.0%	-	-	-	-	-	-	N/A	N/A
Law and Society ^[1]	158	3.3%	166	3.4%	213	4.3%	192	3.8%	174	3.3%	10.1%	-9.4%
Political Science	0	0.0%	0	0.0%	-	-	-	-	-	-	N/A	N/A
Psychology	433	9.0%	413	8.5%	532	10.8%	584	11.4%	604	11.4%	39.5%	3.4%
Social Science	20	0.4%	25	0.5%	19	0.4%	24	0.5%	44	0.8%	120.0%	83.3%
Social Work	118	2.4%	114	2.3%	113	2.3%	119	2.3%	129	2.4%	9.3%	8.4%
Sociology	62	1.3%	62	1.3%	51	1.0%	58	1.1%	52	1.0%	-16.1%	-10.3%
Undecided Major	102	2.1%	121	2.5%	115	2.3%	136	2.7%	95	1.8%	-6.9%	-30.1%
TAS Allied Health	9	0.2%	16	0.3%	10	0.2%	14	0.3%	18	0.3%	100.0%	28.6%
Biochemistry	22	0.5%	25	0.5%	43	0.9%	43	0.8%	53	1.0%	140.9%	23.3%
Bioinformatics	18	0.4%	20	0.4%	19	0.4%	12	0.2%	11	0.2%	-38.9%	-8.3%
Biology	208	4.3%	255	5.2%	290	5.9%	340	6.6%	367	6.9%	76.4%	7.9%
Chemistry	21	0.4%	21	0.4%	24	0.5%	19	0.4%	29	0.5%	38.1%	52.6%
Clinical Lab Sciences	6	0.1%	8	0.2%	11	0.2%	9	0.2%	11	0.2%	83.3%	22.2%
Computer Science	118	2.4%	90	1.9%	76	1.5%	67	1.3%	73	1.4%	-38.1%	9.0%
Environmental Science	21	0.4%	24	0.5%	28	0.6%	42	0.8%	43	0.8%	104.8%	2.4%
Environmental Studies ^[1]	40	0.8%	33	0.7%	-	-	-	-	-	-	N/A	N/A
Integrated Science	3	0.1%	9	0.2%	13	0.3%	12	0.2%	4	0.1%	33.3%	-66.7%
Mathematics	85	1.8%	100	2.1%	112	2.3%	110	2.2%	113	2.1%	32.9%	2.7%
Nursing	372	7.7%	367	7.6%	388	7.9%	407	8.0%	421	8.0%	13.2%	3.4%
Engineering Physics/ Physics	19	0.4%	24	0.5%	14	0.3%	18	0.4%	27	0.5%	42.1%	50.0%
Psychology ^[1]	100	2.1%	110	2.3%	-	-	-	-	-	-	N/A	N/A
Undecided Major	75	1.6%	73	1.5%	88	1.8%	97	1.9%	57	1.1%	-24.0%	-41.2%
School & Major Undecided	170	3.5%	160	3.3%	135	2.8%	136	2.7%	240	4.5%	41.2%	76.5%
Total	4,833		4,860		4,906		5,114		5,284		9.3%	3.3%

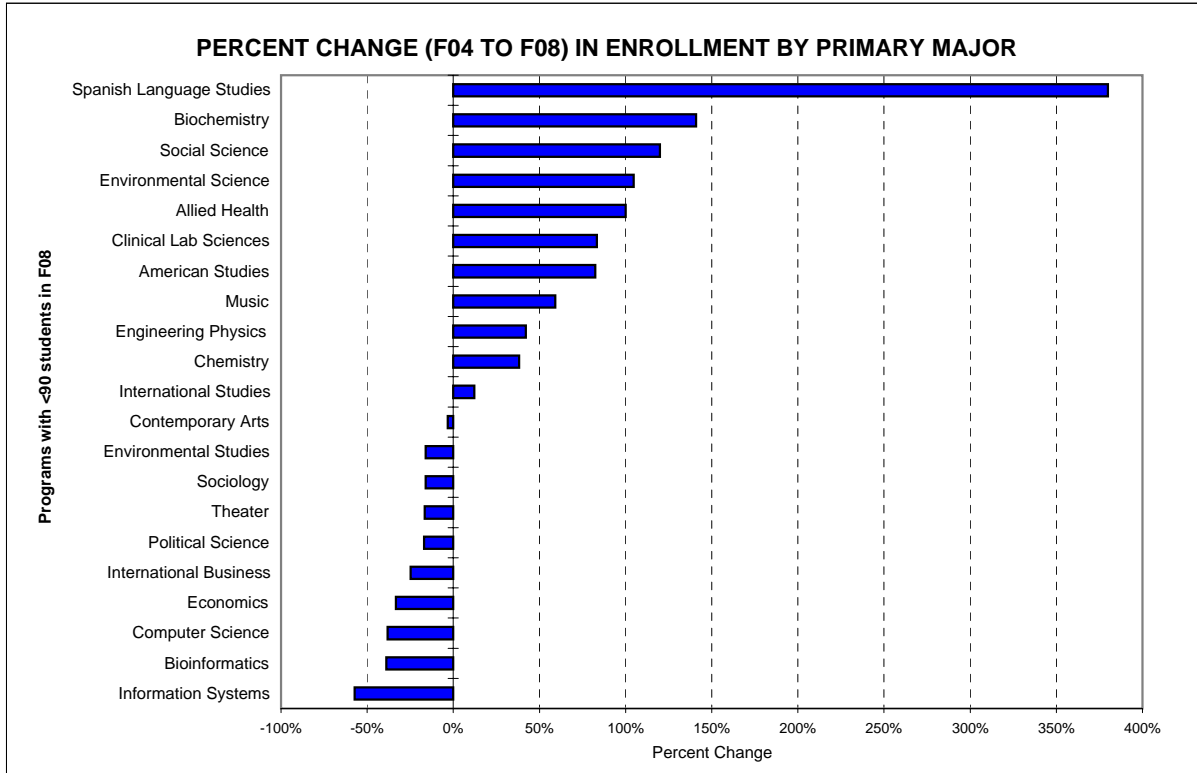
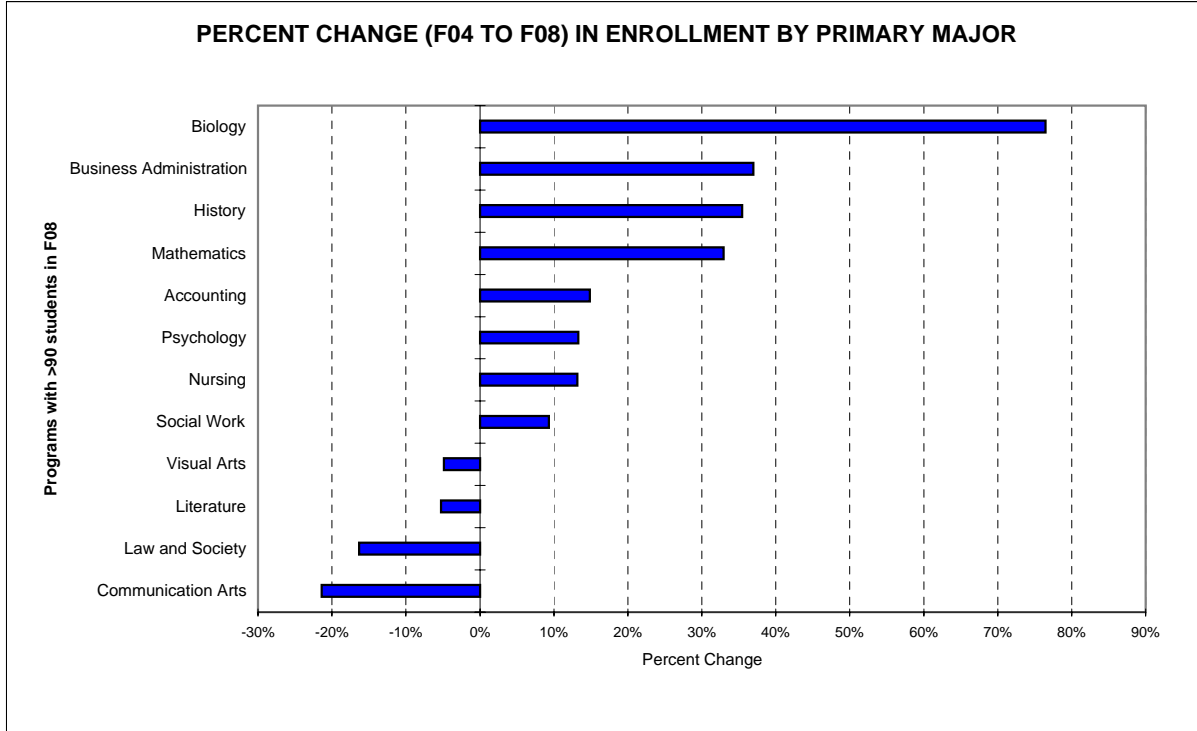
[1] The domicile of certain majors changed in Fall 2006. Economics is now exclusive to ASB. Law & Society is now exclusive to SSHS. Political Science and History are now majors exclusive to AIS. Environmental Studies and Psychology are now majors exclusive to SSHS.

MATRICULATED UNDERGRADUATE ENROLLMENT BY MAJOR, FALL 2004 TO FALL 2008

Majors	Fall 2004		Fall 2005		Fall 2006		Fall 2007		Fall 2008		Percent Change 04 to 08	Percent Change 07 to 08	
	No.	Pct.	No.	Pct.	No.	Pct.	No.	Pct.	No.	Pct.			
Accounting	202	5.0%	232	5.7%	205	4.9%	204	4.8%	232	5.2%	14.9%	13.7%	Com L
Allied Health	9	0.2%	16	0.4%	10	0.2%	14	0.3%	18	0.4%	100.0%	28.6%	
American Studies	17	0.4%	24	0.6%	33	0.8%	30	0.7%	31	0.7%	82.4%	3.3%	
Biochemistry	22	0.5%	25	0.6%	43	1.0%	43	1.0%	53	1.2%	140.9%	23.3%	
Bioinformatics	18	0.4%	20	0.5%	19	0.5%	12	0.3%	11	0.2%	-38.9%	-8.3%	
Biology	208	5.1%	255	6.2%	290	7.0%	340	8.0%	367	8.2%	76.4%	7.9%	
Business Administration	549	13.5%	570	14.0%	575	13.8%	636	14.9%	752	16.8%	37.0%	18.2%	
Chemistry	21	0.5%	21	0.5%	24	0.6%	19	0.4%	29	0.6%	38.1%	52.6%	
Clinical Lab Sciences	6	0.1%	8	0.2%	11	0.3%	9	0.2%	11	0.2%	83.3%	22.2%	
Communication Arts	514	12.7%	485	11.9%	443	10.7%	391	9.2%	404	9.0%	-21.4%	3.3%	
Computer Science	118	2.9%	90	2.2%	76	1.8%	67	1.6%	73	1.6%	-38.1%	9.0%	Busines:
Contemporary Arts	63	1.6%	67	1.6%	86	2.1%	66	1.5%	61	1.4%	-3.2%	-7.6%	
Economics [1]	42	1.0%	28	0.7%	32	0.8%	32	0.8%	28	0.6%	-33.3%	-12.5%	Infor
Engineering Physics/ Physics	19	0.5%	24	0.6%	14	0.3%	18	0.4%	27	0.6%	42.1%	50.0%	
Environmental Science	21	0.5%	24	0.6%	28	0.7%	42	1.0%	43	1.0%	104.8%	2.4%	Co
Environmental Studies [2]	50	1.2%	43	1.1%	40	1.0%	40	0.9%	42	0.9%	-16.0%	5.0%	
History [3]	172	4.2%	200	4.9%	237	5.7%	233	5.5%	233	5.2%	35.5%	0.0%	Interna
Information Systems	138	3.4%	92	2.3%	74	1.8%	73	1.7%	59	1.3%	-57.2%	-19.2%	f
Integrated Science	3	0.1%	9	0.2%	13	0.3%	12	0.3%	4	0.1%	N/A	-66.7%	
International Business	89	2.2%	63	1.5%	70	1.7%	71	1.7%	67	1.5%	-24.7%	-5.6%	
International Studies	49	1.2%	44	1.1%	53	1.3%	59	1.4%	55	1.2%	12.2%	-6.8%	Enviror
Law and Society [4]	208	5.1%	212	5.2%	214	5.1%	192	4.5%	174	3.9%	-16.3%	-9.4%	Co
Liberal Studies	--	--	--	--	--	--	--	--	7	0.2%	N/A	N/A	Inter
Literature	210	5.2%	205	5.0%	218	5.2%	208	4.9%	199	4.4%	-5.2%	-4.3%	
Mathematics	85	2.1%	100	2.4%	112	2.7%	110	2.6%	113	2.5%	32.9%	2.7%	Engir
Music	44	1.1%	47	1.2%	62	1.5%	71	1.7%	70	1.6%	59.1%	-1.4%	
Nursing	372	9.2%	367	9.0%	388	9.3%	407	9.6%	421	9.4%	13.2%	3.4%	At
Political Science [5]	71	1.8%	90	2.2%	72	1.7%	77	1.8%	59	1.3%	-16.9%	-23.4%	Clinic:
Psychology [6]	533	13.2%	523	12.8%	532	12.8%	584	13.7%	604	13.5%	13.3%	3.4%	
Social Science	20	0.5%	25	0.6%	19	0.5%	24	0.6%	44	1.0%	120.0%	83.3%	Environ
Social Work	118	2.9%	114	2.8%	113	2.7%	119	2.8%	129	2.9%	9.3%	8.4%	
Sociology	62	1.5%	62	1.5%	51	1.2%	58	1.4%	52	1.2%	-16.1%	-10.3%	
Spanish	5	0.1%	18	0.4%	24	0.6%	22	0.5%	24	0.5%	380.0%	9.1%	anish La
Theater	60	1.5%	52	1.3%	41	1.0%	54	1.3%	50	1.1%	-16.7%	-7.4%	
Visual Arts	123	3.0%	109	2.7%	111	2.7%	122	2.9%	117	2.6%	-4.9%	-4.1%	egrated :
Undecided Major	592	N/A	596	N/A	573	N/A	655	N/A	621	N/A	N/A	N/A	U
Total	4,833		4,860		4,906		5,114		5,284		9.3%	3.3%	

[1] Prior to fall 2006, includes students from SB and SSHS. [4] Prior to fall 2006, includes students from AIS and SSHS.
 [2] Prior to fall 2006, includes students from SSHS and TAS. [5] Prior to fall 2006, includes students from AIS and SSHS.
 [3] Prior to fall 2006, includes students from AIS and SSHS. [6] Prior to fall 2006, includes students from SSHS and TAS.

TOTAL FALL 2008 ENROLLMENT = 5,284 MATRICULATED UNDERGRADUATES



TOTAL FALL 2008 ENROLLMENT = 5,847

Primary Major and Concentration	Fall 2004		Fall 2005		Fall 2006		Fall 2007		Fall 2008		Percent Change 04 to 08	Percent Change 07 to 08
	No.	% of Maj	No.	% of Maj	No.	% of Maj	No.	% of Maj	No.	% of Maj		
Biology												
Physician's Assistant	33	15.9%	10	3.9%	11	3.8%	15	4.4%	20	5.4%	-39.4%	33.3%
Physical Therapy	8	3.8%	38	14.9%	52	17.9%	49	14.4%	58	15.8%	625.0%	18.4%
Chiropractic	--	--	--	--	1	0.3%	3	0.9%	3	0.8%	N/A	0.0%
Dental	--	--	--	--	6	2.1%	14	4.1%	22	6.0%	N/A	57.1%
Optometry	--	--	--	--	1	0.3%	3	0.9%	5	1.4%	N/A	66.7%
Unspecified	167	80.3%	207	81.2%	219	75.5%	256	75.3%	259	70.6%	55.1%	1.2%
<i>Subtotal</i>	<i>208</i>		<i>255</i>		<i>290</i>		<i>340</i>		<i>367</i>		<i>76.4%</i>	<i>7.9%</i>
Business Administration												
Finance	100	48.1%	117	45.9%	137	47.2%	152	44.7%	170	46.3%	70.0%	11.8%
Management	224	107.7%	237	92.9%	240	82.8%	237	69.7%	245	66.8%	9.4%	3.4%
Marketing	169	81.3%	154	60.4%	168	57.9%	206	60.6%	226	61.6%	33.7%	9.7%
Unspecified	56	26.9%	62	24.3%	30	10.3%	41	12.1%	111	30.2%	98.2%	170.7%
<i>Subtotal</i>	<i>549</i>		<i>570</i>		<i>575</i>		<i>636</i>		<i>752</i>		<i>37.0%</i>	<i>18.2%</i>
Communication Arts												
Creative Writing	7	1.4%	1	0.2%	33	7.4%	39	10.0%	38	9.4%	442.9%	-2.6%
Design & Interactive Media	--	--	--	--	53	12.0%	58	14.8%	80	19.8%	N/A	37.9%
Digital Filmmaking	--	--	--	--	66	14.9%	46	11.8%	56	13.9%	N/A	21.7%
Graphic Design	31	6.0%	7	1.4%	3	0.7%	--	--	--	--	N/A	N/A
Interdisciplinary	6	1.2%	1	0.2%	1	0.2%	--	--	--	--	N/A	N/A
Journalism	19	3.7%	6	1.2%	59	13.3%	60	15.3%	69	17.1%	263.2%	15.0%
Media & Cinema Studies	--	--	--	--	102	23.0%	76	19.4%	82	20.3%	N/A	7.9%
Public Communication	36	7.0%	6	1.2%	--	--	--	--	--	--	N/A	N/A
Radio	7	1.4%	2	0.4%	--	--	--	--	--	--	N/A	N/A
TV/Video Production	33	6.4%	11	2.3%	--	--	--	--	--	--	N/A	N/A
Unspecified	375	73.0%	451	93.0%	126	28.4%	112	28.6%	79	19.6%	-78.9%	-29.5%
<i>Subtotal</i>	<i>514</i>		<i>485</i>		<i>443</i>		<i>391</i>		<i>404</i>		<i>-21.4%</i>	<i>3.3%</i>
Music ^[2]												
Music Industry	--	--	--	--	11	2.8%	16	22.5%	16	22.9%	N/A	0.0%
Music Production	--	--	--	--	6	1.5%	9	12.7%	15	21.4%	N/A	66.7%
Music Performance	--	--	--	--	8	2.1%	3	4.2%	7	10.0%	N/A	133.3%
Music Studies	--	--	--	--	8	2.1%	3	4.2%	2	2.9%	N/A	-33.3%
Unspecified	--	--	--	--	29	7.5%	40	56.3%	30	42.9%	N/A	-25.0%
<i>Subtotal</i>	<i>--</i>		<i>--</i>		<i>62</i>		<i>71</i>		<i>70</i>		<i>N/A</i>	<i>-1.4%</i>
Nursing												
RN/BSN	106	28.5%	90	24.5%	97	25.0%	76	18.7%	89	21.1%	-16.0%	17.1%
Generic BSN	266	71.5%	277	75.5%	291	75.0%	331	81.3%	332	78.9%	24.8%	0.3%
<i>Subtotal</i>	<i>372</i>		<i>367</i>		<i>388</i>		<i>407</i>		<i>421</i>		<i>13.2%</i>	<i>3.4%</i>
Social Science												
Africana Studies	1	5.0%	1	4.0%	2	10.0%	1	4.2%	0	0.0%	-100.0%	-100.0%
Community Mental Health	3	15.0%	6	24.0%	4	20.0%	4	16.7%	4	9.1%	33.3%	0.0%
Criminology ^[1]	1	5.0%	1	4.0%	--	--	--	--	0	--	N/A	N/A
Cultural Studies	1	5.0%	1	4.0%	2	10.0%	2	8.3%	0	0.0%	-100.0%	-100.0%
Ethnic Relations	--	0.0%	--	0.0%	1	5.0%	--	0.0%	--	0.0%	N/A	N/A
Gender Studies	1	5.0%	2	8.0%	1	5.0%	1	4.2%	0	0.0%	-100.0%	-100.0%
Labor Studies	1	5.0%	0	0.0%	0	0.0%	--	0.0%	--	0.0%	N/A	N/A
Unspecified	12	60.0%	14	56.0%	10	50.0%	16	66.7%	40	90.9%	233.3%	150.0%
<i>Subtotal</i>	<i>20</i>		<i>25</i>		<i>20</i>		<i>24</i>		<i>44</i>		<i>120.0%</i>	<i>83.3%</i>
Theater ^[2]												
Acting	--	--	--	--	16	39.0%	20	37.0%	23	46.0%	N/A	15.0%
Design/Technical Theater	--	--	--	--	3	7.3%	2	3.7%	3	6.0%	N/A	50.0%
Directing/Stage Mgmt.	--	--	--	--	3	7.3%	3	5.6%	3	6.0%	N/A	0.0%
Theater Studies	--	--	--	--	--	--	1	1.9%	1	2.0%	N/A	N/A
Unspecified	--	--	--	--	19	46.3%	28	51.9%	20	40.0%	N/A	-28.6%
<i>Subtotal</i>	<i>--</i>		<i>--</i>		<i>41</i>		<i>54</i>		<i>50</i>		<i>N/A</i>	<i>-7.4%</i>
Visual Arts ^[2]												
Art History	--	--	--	--	5	4.5%	5	4.1%	4	3.4%	N/A	-20.0%
Drawing and Painting	--	--	--	--	30	27.0%	25	20.5%	27	23.1%	N/A	8.0%
New Media	--	--	--	--	4	3.6%	1	0.8%	2	1.7%	N/A	100.0%
Photography	--	--	--	--	8	7.2%	6	4.9%	12	10.3%	N/A	100.0%
Sculpture	--	--	--	--	5	4.5%	3	2.5%	2	1.7%	N/A	-33.3%
Unspecified	--	--	--	--	59	53.2%	82	67.2%	70	59.8%	N/A	-14.6%
<i>Subtotal</i>	<i>--</i>		<i>--</i>		<i>111</i>		<i>122</i>		<i>117</i>		<i>N/A</i>	<i>-4.1%</i>

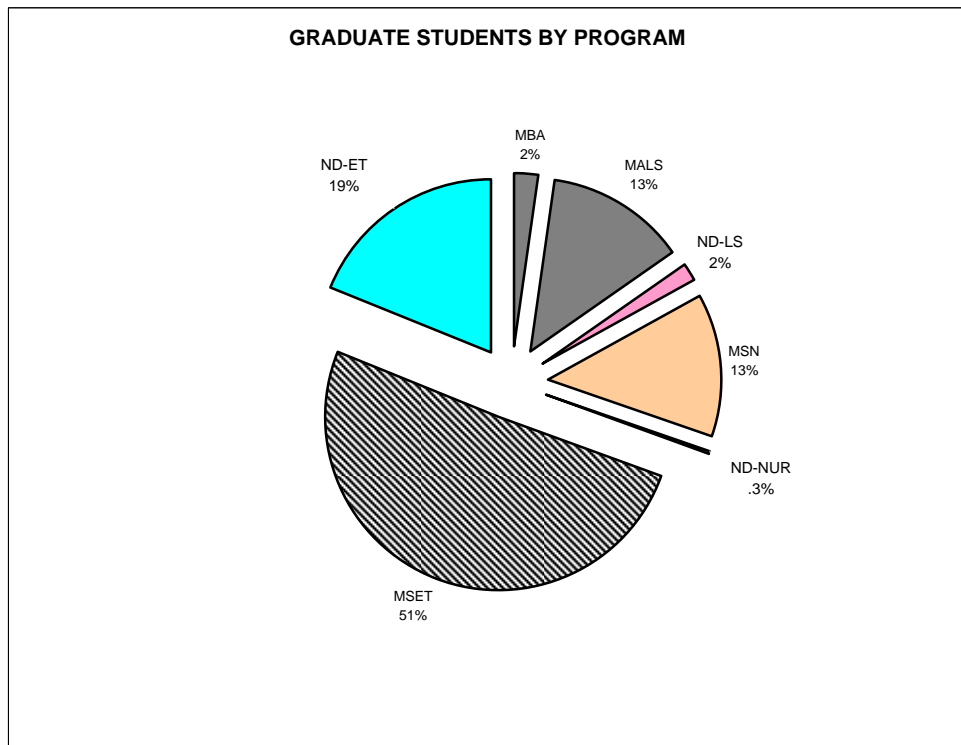
The domicile of certain majors changed in Fall 2006.

[1] The Criminology program is now offered in the major Law and Society (a new major as of fall 2006).

[2] Fine Art concentrations previously included in this table are now majors (Music, Theater, and Visual Arts).

TOTAL FALL 2008 ENROLLMENT = 5,847
GRADUATE STUDENT ENROLLMENTS BY PROGRAM

Business Administration	7	2.4%
Educational Technology	141	49.3%
Nondegree-seeking: Educational Technology	55	19.2%
Liberal Studies	38	13.3%
Nondegree-seeking: Liberal Studies	5	1.7%
Nursing	39	13.6%
Nondegree-seeking: Nursing	1	0.3%
	286	



GRADUATE ENROLLMENT BY PROGRAM, FALL 2004 TO FALL 2008

Program	Fall 2004		Fall 2005		Fall 2006		Fall 2007		Fall 2008		Percent Change 04 to 08	Percent Change 07 to 08
	No.	Pct.	No.	Pct.	No.	Pct.	No.	Pct.	No.	Pct.		
Liberal Studies	32	9.4%	37	12.1%	33	10.6%	31	10.0%	38	13.3%	18.8%	22.6%
Educational Technology	142	41.9%	115	37.7%	107	34.4%	150	48.5%	141	49.3%	-0.7%	-6.0%
Business Administration	54	15.9%	31	10.2%	10	3.2%	7	2.3%	7	2.4%	-87.0%	0.0%
Nursing	15	4.4%	43	14.1%	44	14.1%	45	14.6%	39	13.6%	160.0%	-13.3%
Non-degree-seeking	96	28.3%	79	25.9%	117	37.6%	76	24.6%	61	21.3%	-36.5%	-19.7%
Total	339		305		311		309		286		-15.6%	-7.4%



GRADUATE NONDEGREE-SEEKING STUDENTS BY AFFILIATION, FALL 2004 TO FALL 2008

Program	Fall 2004		Fall 2005		Fall 2006		Fall 2007		Fall 2008		Percent Change 04 to 08	Percent Change 07 to 08
	No.	Pct.	No.	Pct.	No.	Pct.	No.	Pct.	No.	Pct.		
Nondegree-seeking - Liberal Studies	2	2.1%	6	7.6%	1	0.9%	5	6.6%	5	8.2%	150.0%	0.0%
Nondegree-seeking - Educational Technology	89	92.7%	70	88.6%	116	99.1%	69	90.8%	55	90.2%	-38.2%	-20.3%
Nondegree-seeking - MBA	5	5.2%	3	3.8%	0	0.0%	0	0.0%	0	0.0%	N/A	N/A
Nondegree-seeking - Nursing	0	0.0%	0	0.0%	0	0.0%	2	2.6%	1	1.6%	N/A	-50.0%
Nondegree-seeking - Affiliation Unspecified	0	0.0%	0	0.0%	0	0.0%	0	0.0%	0	0.0%	N/A	N/A
Total	96		79		117		76		61		-36.5%	-19.7%

ACADEMIC YEAR HEADCOUNT ENROLLMENT, 2003-04 TO 2007-08

Semester/Session	2003-04	2004-05	2005-06	2006-07	2007-08	Percent Change 03/04 to 07/08	Percent Change 06/07 to 07/08
	No.	No.	No.	No.	No.		
Fall	5,631	5,617	5,538	5,499	5,702	1.3%	3.7%
Spring	5,415	5,403	5,281	5,247	5,435	0.4%	3.6%
<i>Annualized</i> ^[1]	5,523	5,510	5,410	5,373	5,569	0.8%	3.6%
Summer ^[2]	1,901	1,789	1,752	1,634	1,506	-20.8%	-7.8%
Winter ^[3]	848	651	614	N/A	N/A	N/A	N/A
Unduplicated Total ^[4]	6,900	6,809	6,671	6,675	6,720 ^[5]	-2.6%	0.7%

[1] Calculated by summing the Fall and Spring enrollments and dividing by 2.

[2] Counts are from the summer prior to the academic year so that the 2007-08 academic year covers Summer 2007, Fall 2007, Winter 2008, and Spring 2008.

[3] Winter session is no longer offered. The last Winter semester was Winter 2006.

[4] This is an unduplicated count of the total number of individuals who took at least one UG+/or GR course at the College during the academic year.

[5] Unduplicated headcount revised on 9/14/10.



ACADEMIC YEAR FTE'S HEADCOUNT ENROLLMENT, 2003-04 TO 2007-08

Semester/Session	2003-04	2004-05	2005-06	2006-07	2007-08	Percent ^[4] Change 03/04 to 07/08	Percent ^[4] Change 06/07 to 07/08
	No.	No.	No.	No.	No.		
Fall	4,532	4,679	4,733	4,886	5043	11.3%	3.2%
Spring	4,317	4,403	4,390	4,545	4801	11.2%	5.6%
<i>Annualized</i> ^[1]	4,425	4,541	4,562	4,716	4922 ^[4]	11%	4.4%
Summer ^[2]	325	298	288	271	298	-8.3%	10.0%
Winter ^[3]	102	75	73	N/A	N/A	N/A	N/A

[1] Calculated by summing the Fall and Spring enrollments and dividing by 2.

[2] Counts are from the summer prior to the academic year so that the 2007-08 academic year covers Summer 2007, Fall 2007, Winter 2008, and Spring 2008.

[3] Winter session is no longer offered. The last Winter semester was Winter 2006.

[4] Corrections made on 9/14/10.