

**SECTION VI:**

**STUDENT SERVICES**

# CAHILL CENTER <sup>[1]</sup>

## COOPERATIVE EDUCATION

	03/04	04/05	05/06	06/07	07/08	Percent Change 03/04 to 07/08	Percent Change 06/07 to 07/08
Number of Employers	263	249	277	256	268	1.9%	4.7%
Number of Students:							
Female	196	198	216	157	167	-14.8%	6.4%
Male	<u>163</u>	<u>129</u>	<u>132</u>	<u>148</u>	<u>124</u>	<u>-23.9%</u>	<u>-16.2%</u>
Total Students	359	327	348	305	291	-18.9%	-4.6%
Dollars Earned	\$1,115,347	\$1,105,414	\$1,051,361	\$806,095	\$783,711	-29.7%	-2.8%
Credits Earned	1,365	1,218	1,413	1,250	1,164	-14.7%	-6.9%

## CAREER SERVICES

	03/04	04/05	05/06	06/07	07/08	Percent Change 03/04 to 07/08	Percent Change 06/07 to 07/08
Course Participants	151	133	143	160	172	13.9%	7.5%
Job Fair Participants	1200	900	600	600	550	-54.2%	-8.3%

## STUDENT ASSISTANT PROGRAM

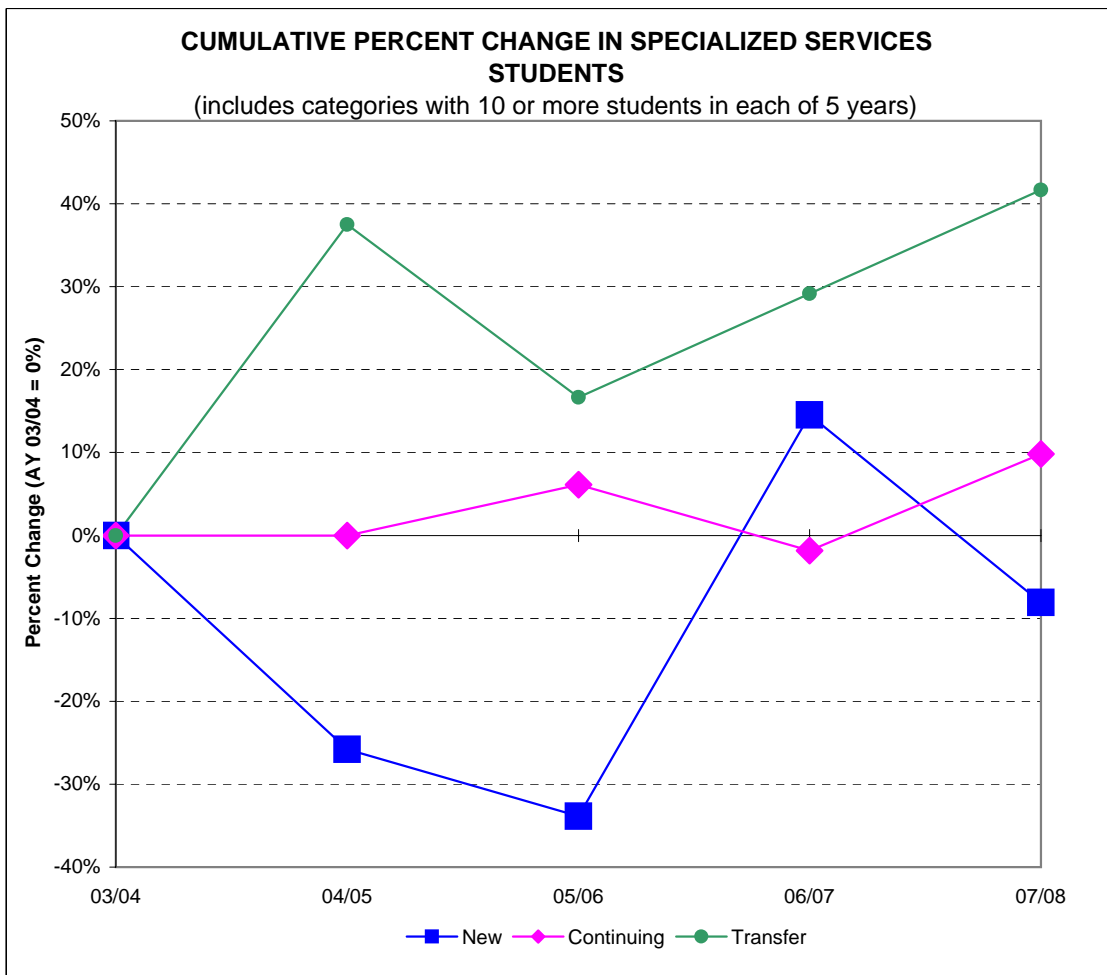
	03/04	04/05	05/06	06/07	07/08	Percent Change 03/04 to 07/08	Percent Change 06/07 to 07/08
Student Workers [2]	706	782	739	782	802	13.6%	2.6%

[1] This information is not system generated. Data is self-reported by unit.

[2] The Cahill Center acquired responsibility in 2002 for managing students assigned to perform special projects for faculty.

## SPECIALIZED SERVICES <sup>[1]</sup>

Students	03/04	04/05	05/06	06/07	07/08	Percent Change	
						03/04 to 07/08	06/07 to 07/08
New [2]	62	46	41	71	57	-8.1%	-19.7%
Continuing	163	163	173	160	179	9.8%	11.9%
Transfer	24	33	28	31	34	41.7%	9.7%
Re-Admits	3	1	1	2	1	-66.7%	-50.0%
Visiting/NM	-	-	-	4	2		-50.0%
<b>Total</b>	<b>252</b>	<b>243</b>	<b>243</b>	<b>268</b>	<b>273</b>	<b>8.3%</b>	<b>1.9%</b>

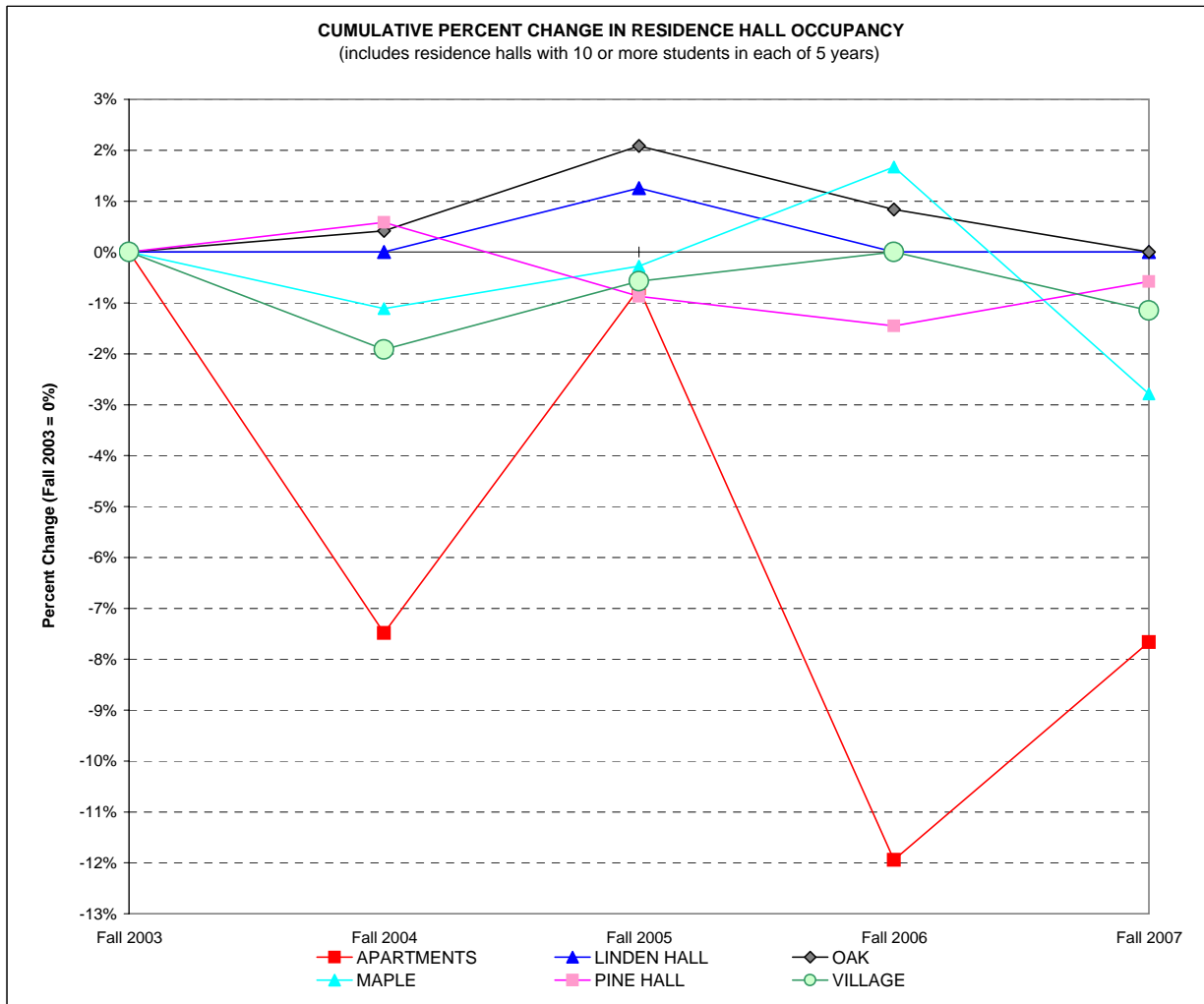


[1] This information is not system-generated. Data is self-reported by unit.

[2] Includes students already enrolled at Ramapo College for one or more semesters, but new to the Office of Specialized Services, and new first-time freshmen.

FALL SEMESTER RESIDENCE HALL OCCUPANCY, 2003 TO 2007<sup>[1]</sup>

	Fall 2003		Fall 2004		Fall 2005		Fall 2006		Fall 2007		Percent Change 03 to 07	Percent Change 06 to 07
	Number	Percent	Number	Percent	Number	Percent	Number	Percent	Number	Percent		
APARTMENTS	561	24.7%	519	20.8%	557	21.8%	494	17.9%	518	17.7%	-7.7%	4.9%
LINDEN HALL	239	10.5%	239	9.6%	242	9.5%	239	8.7%	239	8.2%	0.0%	0.0%
LODGE	7	0.3%	-	-	-	-	-	-	-	-	N/A	N/A
OAK	240	10.6%	241	9.7%	245	9.6%	242	8.8%	240	8.2%	0.0%	-0.8%
MAPLE	359	15.8%	355	14.2%	358	14.0%	365	13.3%	349	11.9%	-2.8%	-4.4%
PINE HALL	344	15.1%	346	13.9%	341	13.4%	339	12.3%	342	11.7%	-0.6%	0.9%
OVERFLOW/HOTEL	-	-	-	-	-	-	-	-	-	-	N/A	N/A
VILLAGE	523	23.0%	513	20.5%	520	20.4%	523	19.0%	517	17.7%	-1.1%	-1.1%
THE OVERLOOK	-	-	284	11.4%	290	11.4%	290	10.5%	294	10.0%	N/A	1.4%
LAUREL HALL	-	-	-	-	-	-	262	9.5%	430	14.7%	N/A	64.1%
<b>TOTAL</b>	<b>2,273</b>		<b>2,497</b>		<b>2,553</b>		<b>2,754</b>		<b>2,929</b>		<b>28.9%</b>	<b>6.4%</b>



**FINANCING FOR RESIDENCE LIFE, STUDENT CENTER, AND EDUCATIONAL PROJECTS <sup>[1] [2]</sup>**

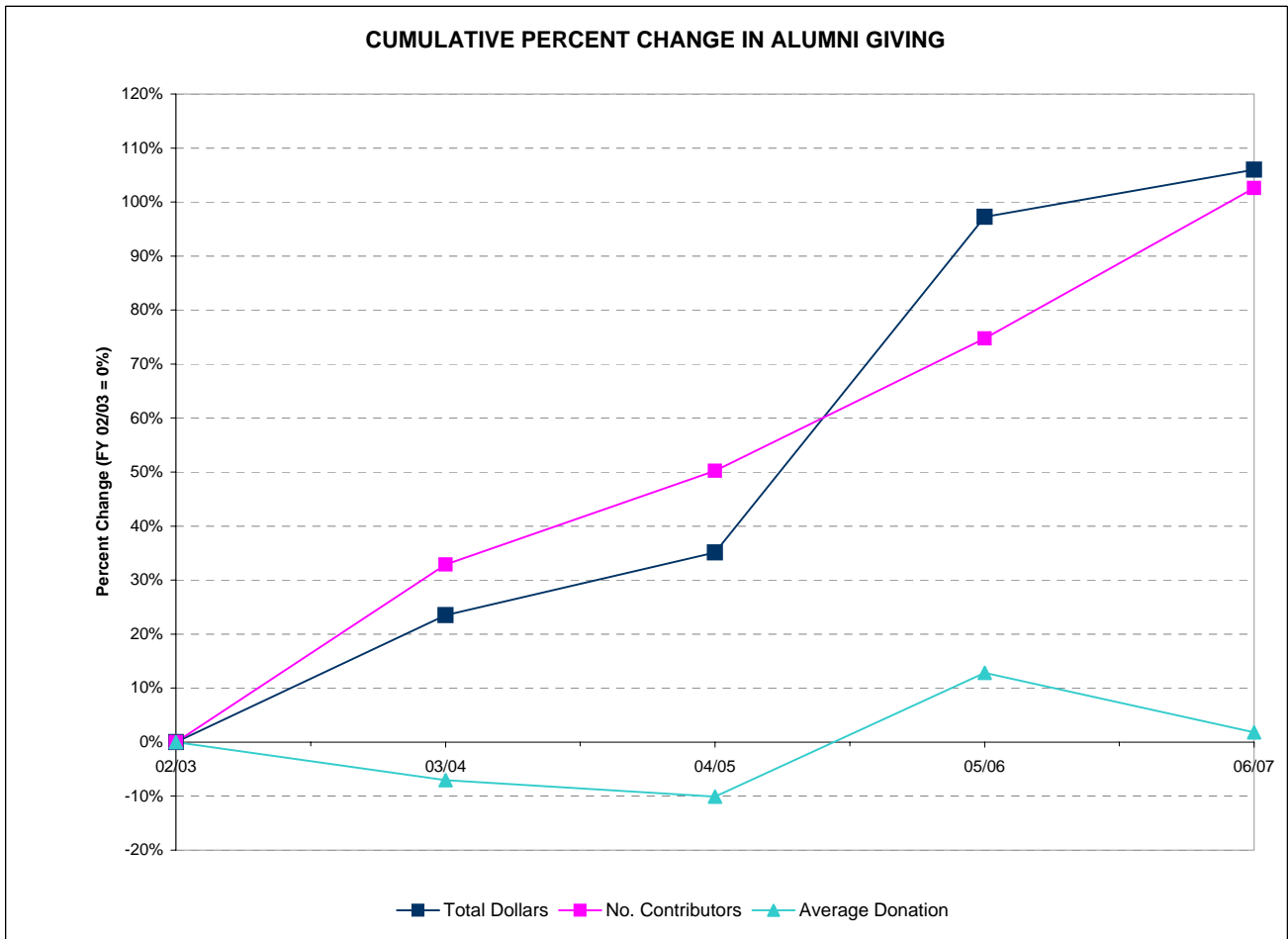
Facilities Bond	Name	Interest Rate	Outstanding	Outstanding	Outstanding	Outstanding	Outstanding	Year Paid in Full
			Principal Payments Jun-03 (000)	Principal Payments Jun-04 (000)	Principal Payments Jun-05 (000)	Principal Payments Jun-06 (000)	Principal Payments Jun-07 (000)	
<u>Residence Life</u>								
Series 1973A	Phase I	5.300% to 5.600%	\$115	\$0	\$0	\$0	\$0	2003
Series 1998G	Oak Hall/Pavilion	4.100% to 4.625%	\$15,830	\$15,500	\$15,155	\$14,790	\$14,420	2028
Series 1999E [3]	Maple Hall/Pavilion Expansion	5.250% to 5.600%	\$19,580	\$2,420	\$2,065	\$1,690	\$1,300	2029
Series 2001D [4]	The Village/Apt. Wiring	4.100% to 5.000%	\$40,480	\$40,480	\$39,735	\$38,965	\$6,040	2031
Series 2002H [4]	Village Completion/Overlook	2.700% to 5.000%	\$28,655	\$28,610	\$28,580	\$28,000	\$18,610	2032
Series 2003G [3]	Pine & Linden	2.000% to 3.709%	\$9,300	\$9,300	\$9,300	\$9,185	\$7,875	2013
Series 2003H [3]	Oak Hall/Pavilion/Phase I Renov.	4.250% to 5.000%	\$0	\$18,930	\$18,930	\$18,930	\$18,930	2029
Series 2004E [4]	Laurel Hall	3.000% to 4.380%	\$0	\$0	\$44,350	\$44,350	\$10,575	2035
Series 2006I [4]	Advance Refunding of Bond Issues	4.000% to 5.000%	\$0	\$0	\$0	\$0	\$80,326	2036
<u>Student Center</u>								
Series 1998H	Student Center Renovations	4.100% to 4.600%	\$1,630	\$1,510	\$1,385	\$1,255	\$1,120	2013
Series 2002I [4]	Student Center Renovations	2.700% to 5.00%	\$2,145	\$2,085	\$2,045	\$2,005	\$1,345	2032
Series 2003F	Student Center Annex	1.500% to 3.500%	\$1,820	\$1,820	\$1,820	\$1,810	\$1,615	2013
Series 2006I [4]	Advance Refunding of Bond Issues	4.000% to 5.000%	\$0	\$0	\$0	\$0	\$625	2036
<u>Educational &amp; General</u>								
Series 1998I	Voice, Video, Data	4.100% to 4.500%	\$645	\$550	\$450	\$345	\$235	2008
Series 2000B	Higher Ed Capital Bond Fund	4.500% to 5.750%	\$2,387	\$2,305	\$2,218	\$2,126	\$2,030	2021
Series 2001A	Dormitory Safety		\$895	\$826	\$757	\$688	\$619	2016
Series 2001E	Sustainability Center/Equip.	3.600% to 4.000%	\$2,225	\$1,885	\$1,535	\$1,170	\$795	2008
Series 2002A	Higher Ed Capital Bond Fund	3.00% to 5.250%	\$1,849	\$1,850	\$1,850	\$1,850	\$1,796	2023
Series 2002J [4]	Bradley Center/Havemeyer House	2.700% to 5.000%	\$29,620	\$29,580	\$29,550	\$28,945	\$19,495	2032
Series 2003A	Equipment Leasing Fund	2.500% to 5.000%	\$467	\$467	\$394	\$320	\$244	2010
Series 2004E [4]	Loop Road/Parking Garage	3.000% to 4.380%	\$0	\$0	\$9,630	\$9,630	\$3,105	2035
Series 2006D [4]	Sustainability Center Completion	3.750% to 4.500%	\$0	\$0	\$0	\$49,085	\$37,940	2036
Series 2006I [4]	Advance Refunding of Bond Issues	4.000% to 5.000%	\$0	\$0	\$0	\$0	\$25,869	2036
			<u>\$157,643</u>	<u>\$158,118</u>	<u>\$209,749</u>	<u>\$255,139</u>	<u>\$254,909</u>	

[1] This information is not system-generated. Data is self-reported by unit.

[2] The College has pledged all revenues generated from the operation of the residential facilities, the student center building and from other legally available funds of the College under the aforementioned capital lease agreements.

**ALUMNI GIVING, FISCAL YEAR 2003 TO FISCAL YEAR 2007<sup>[1]</sup>**

Giving	02/03	03/04	04/05	05/06	06/07	Percent Change	Percent Change
						02/03 to 06/07	05/06 to 06/07
Total Dollars	\$95,423	\$117,854	\$128,918	\$188,211	\$196,560	106.0%	4.4%
Number of Donors	1,232	1,637	1,851	2,153	2,496	102.6%	15.9%
Average Alumni Donation	\$77.46	\$71.99	\$69.65	\$87.42	\$78.85	1.8%	-9.8%
Number of Alumni Solicited	15,384	15,825	16,574	17,886	18,224	18.5%	1.9%
Phonathon New Donors <sup>[2]</sup>	346	351	353	104	135	-61.0%	29.8%



[1] This information is not system-generated. Data is self-reported by unit.

[2] Decrease in FY 05/06 and FY06/07 due to strategic change in Phonathon to target a smaller group of no-donor alumni.

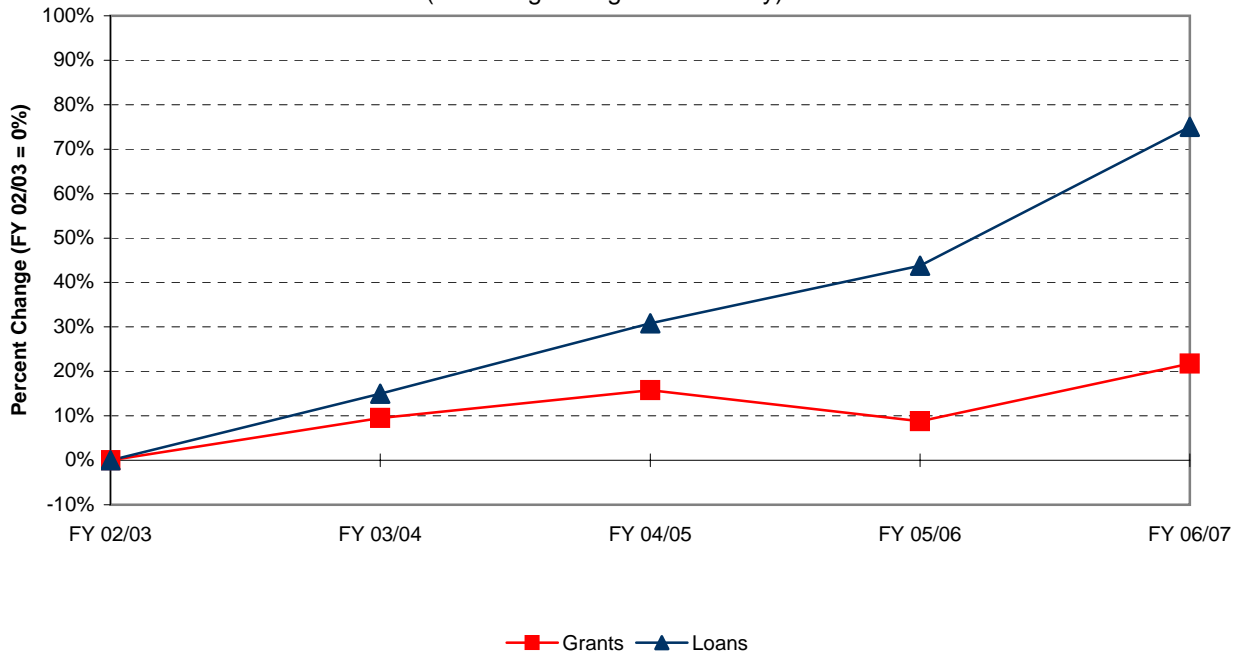
**STUDENT FINANCIAL AID, FY 2003 TO FY 2007<sup>[1]</sup>**

<i>Financial Aid Dollars</i>	FY 02/03	FY 03/04	FY 04/05	FY 05/06	FY 06/07	Percent Change	Percent Change
	\$	\$	\$	\$	\$	02/03 to 06/07	05/06 to 06/07
Pell Grants	\$2,401,840	\$2,514,153	\$2,473,848	\$2,387,812	\$2,508,197	4.4%	5.0%
College Work Study	\$250,195	\$193,790	\$231,882	\$192,715	\$204,224	-18.4%	6.0%
Perkins Loans	\$192,813	\$159,703	\$189,259	\$124,272	\$191,500	-0.7%	54.1%
Stafford Loans (total)	\$9,564,939	\$10,251,425	\$11,027,934	\$10,695,474	\$11,910,750	24.5%	11.4%
Subsidized	\$5,761,135	\$6,392,347	\$6,997,434	\$6,712,707	\$7,212,263	25.2%	7.4%
Un-subsidized	\$3,803,804	\$3,859,078	\$4,030,500	\$3,982,767	\$4,698,487	23.5%	18.0%
SEOG	\$233,320	\$237,350	\$239,269	\$226,202	\$242,195	3.8%	7.1%
Parents Loans for Dependent Students	\$1,921,468	\$2,632,337	\$3,336,712	\$4,252,088	\$5,712,189	197.3%	34.3%
Ramapo College Grants (total)	\$4,290,405	\$4,962,062	\$5,203,193	\$4,439,901	\$5,230,342	21.9%	17.8%
EOF	\$430,818	\$498,888	\$419,534	\$374,863	\$418,533	-2.9%	11.6%
Non-EOF	\$39,859	\$0	\$1,767	\$9,703	\$0	-100.0%	-100.0%
Institutional Grants	\$3,819,728	\$4,463,174	\$4,781,892	\$4,055,335	\$4,811,809	26.0%	18.7%
TAG	\$2,440,560	\$2,574,564	\$2,983,577	\$3,098,991	\$3,463,340	41.9%	11.8%
Educational Opportunity Fund (EOF)	\$318,206	\$315,499	\$311,800	\$381,067	\$347,085	9.1%	-8.9%
New Jersey Class Loans	\$2,541,377	\$3,077,285	\$3,232,706	\$3,034,650	\$4,220,429	66.1%	39.1%
Private Loans	\$572,703	\$891,351	\$1,566,375	\$3,163,450	\$3,861,299	574.2%	22.1%
<b>Total</b>	<b>\$24,727,826</b>	<b>\$27,809,519</b>	<b>\$30,796,555</b>	<b>\$31,996,622</b>	<b>\$37,891,550</b>	<b>53.2%</b>	<b>18.4%</b>

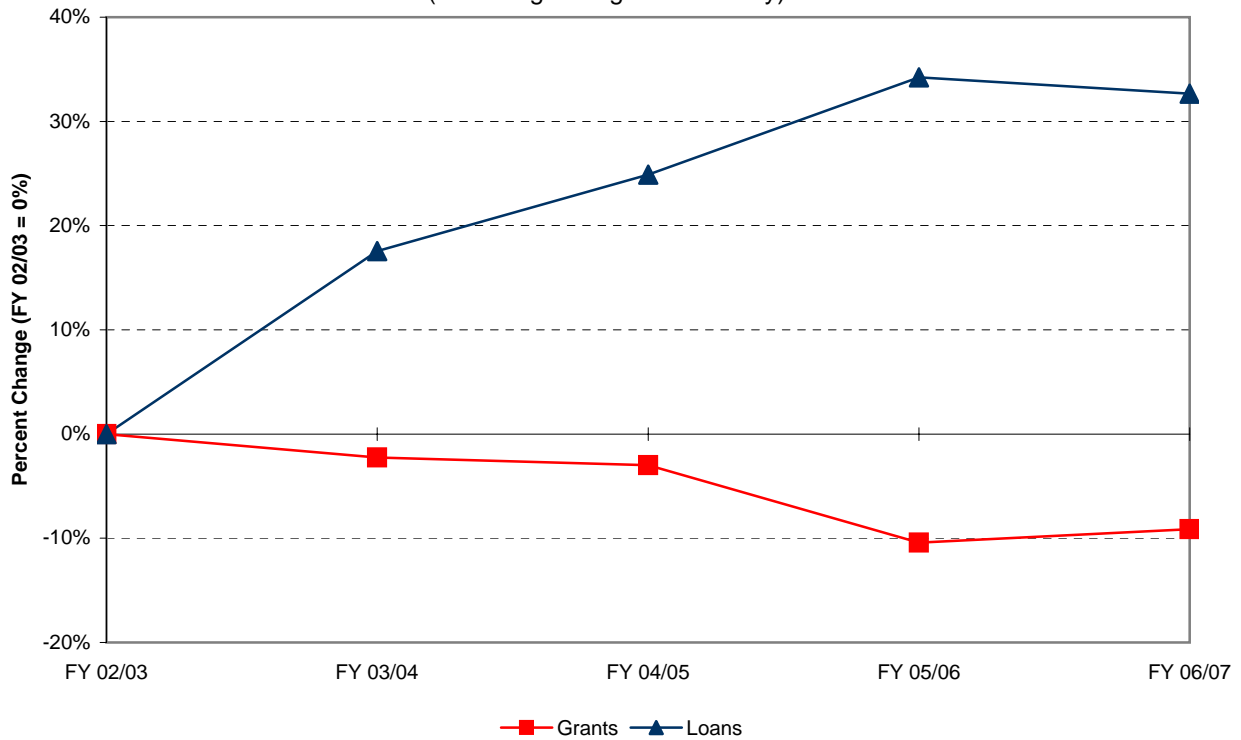
<i>Financial Aid Recipients</i>	FY 02/03	FY 03/04	FY 04/05	FY 05/06	FY 06/07	Percent Change	Percent Change
	#	#	#	#	#	02/03 to 06/07	05/06 to 06/07
Pell Grants	924	951	942	907	900	-2.6%	-0.8%
College Work Study	201	127	197	149	129	-35.8%	-13.4%
Perkins Loans	163	128	147	103	147	-9.8%	42.7%
Stafford Loans (total)	2,649	2,783	2,909	2,783	3,210	21.2%	15.3%
Subsidized	1,597	1,703	1,839	1,762	1,972	23.5%	11.9%
Un-subsidized	1,052	1,080	1,070	1,021	1,238	17.7%	21.3%
SEOG	222	211	273	238	271	22.1%	13.9%
Parents Loans for Dependent Students	296	353	420	462	523	76.7%	13.2%
Ramapo College Grants (total)	971	878	753	643	650	-33.1%	1.1%
EOF	160	109	124	115	123	-23.1%	7.0%
Non-EOF	39	0	1	4	0	-100.0%	-100.0%
Institutional Grants	772	769	628	524	527	-31.7%	0.6%
TAG	819	827	865	811	822	0.4%	1.4%
Educational Opportunity Fund (EOF)	267	264	274	270	268	0.4%	-0.7%
New Jersey Class Loans	339	375	369	310	358	5.6%	15.5%
Private Loans	76	104	178	318	354	365.8%	11.3%
<b>Total</b>	<b>6,927</b>	<b>7,001</b>	<b>7,327</b>	<b>6,994</b>	<b>7,632</b>	<b>10.2%</b>	<b>9.1%</b>

[1] This information is not system-generated. Data is self-reported by unit.

**CUMULATIVE PERCENT CHANGE IN FINANCIAL AID DOLLARS BY SOURCE**  
(excluding College Work Study)



**CUMULATIVE PCT. CHANGE IN NO. OF FINANCIAL AID RECIPIENTS BY SOURCE**  
(excluding College Work Study)





**CAMPUS SECURITY ANNUAL REPORT <sup>[1]</sup>**

<b>Reported Occurrences</b>	01/02	02/03	03/04	04/05	05/06	Percent Change 01/02 to 05/06	Percent Change 04/05 to 05/06
	Criminal Homicide	0	0	0	0	0	N/A
<i>Sexual Offenses:</i>							
Forcible: Rape, Sodomy, Assault (with an object), Fondling	7	4	5	12	4 <sup>[2]</sup>	-42.9%	-66.7%
Non-Forcible: Incest, Statutory Rape	0	0	0	0	0	N/A	N/A
Robbery	2	0	0	1	0	-100.0%	-100.0%
Aggravated Assault	1	2	0	2	0	-100.0%	-100.0%
Burglary	21	11	8	19	19	-9.5%	0.0%
Motor Vehicle Theft	4	1	0	0	5 <sup>[3]</sup>	25.0%	N/A
Arson	0	0	0	0	1	N/A	N/A
Hate Crimes	0	0	0	0	0	N/A	N/A
<b>Arrests:</b>							
Weapon Law Violation	0	2	0	1	1	N/A	0.0%
Drug Abuse Violation	7	12	3	4	10	42.9%	150.0%
Liquor Law Violation	0	0	0	0	0	N/A	N/A

[1] This information is not system-generated. Data is self-reported by unit. Crime statistics reported using FBI definitions. Figures are the most current available in the Campus Crime Statistics publication of 8/06.

[2] In most incidents, the victim was acquainted with the perpetrator.

[3] All 5 motor vehicle thefts involved golfcarts that were recovered.

**STUDENT PARTICIPATION IN STUDY ABROAD PROGRAMS, 2003 TO 2007<sup>[1]</sup>**

2-4 Week Programs	AY 03-04		AY 04-05		AY 05-06 <sup>[6]</sup>		AY 06-07 <sup>[7]</sup>		AY 07-08		Percent Change 03/04 to 07/08	Percent Change 06/07 to 07/08
	Participants		Participants		Participants		Participants		Participants			
	No.	Pct.	No.	Pct.	No.	Pct.	No.	Pct.	No.	Pct.		
American Southwest	21	10.8%	19	12.5%	24	22.6%	-	-	-	-	N/A	N/A
American West	11	5.6%	9	5.9%	-	-	-	-	10	15.4%	-9.1%	N/A
Austria	-	-	-	-	-	-	-	-	1	1.5%	N/A	N/A
China	-	-	-	-	-	-	1	3.4%	7	10.8%	N/A	600.0%
Costa Rica [2]	22	11.3%	21	13.8%	-	-	2	6.9%	2	3.1%	-90.9%	0.0%
England [3]	74	37.9%	49	32.2%	65	61.3%	1	3.4%	5	7.7%	-93.2%	400.0%
Ireland	38	19.5%	-	-	1	0.9%	2	6.9%	8	12.3%	-78.9%	300.0%
Italy	3	1.5%	40	26.3%	1	0.9%	6	20.7%	16	24.6%	433.3%	166.7%
Jamaica	16	8.2%	-	-	11	10.4%	-	-	-	-	N/A	N/A
Prague	6	3.1%	8	5.3%	-	-	1	3.4%	2	3.1%	-66.7%	100.0%
Quebec City	2	1.0%	3	2.0%	-	-	1	3.4%	-	-	N/A	N/A
Scotland	-	-	-	-	-	-	-	-	1	1.5%	N/A	N/A
Spain (with NJSCIS)	-	-	-	-	1	0.9%	4	13.8%	13	20.0%	N/A	225.0%
Washington D.C. Internship [4]	2	1.0%	1	0.7%	-	-	-	-	-	-	N/A	N/A
Other Programs [5]	-	-	2	1.3%	3	2.8%	11	37.9%	-	-	N/A	N/A
<b>Total</b>	<b>195</b>		<b>152</b>		<b>106</b>		<b>29</b>		<b>65</b>		<b>-66.7%</b>	<b>124.1%</b>

[1] This data is not system-generated; it is self-reported by the unit. These numbers include students from both Ramapo College and other campuses.

[2] The Costa Rica programs (Intensa Spanish Language, and Eco-Systems) were previously sponsored by Ramapo. As of AY06-07, programs in Costa Rica are sponsored by the NJ State Consortium for International Students (NJSCIS).

[3] The England Regents program ended in AY05-06. Programs in England are now sponsored by the NJSCIS.

[4] The Washington DC program was a credit-bearing semester sponsored by Ramapo.

[5] Represents Ramapo student participation in non-Ramapo sponsored programs.

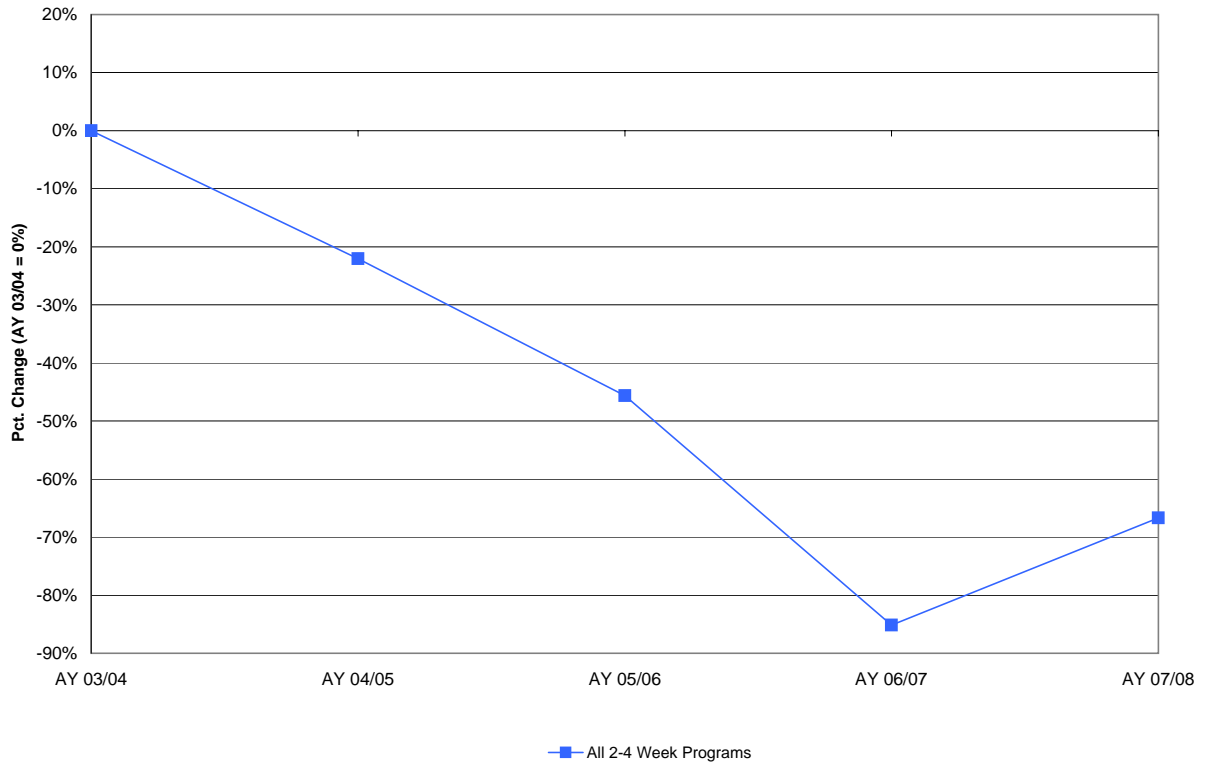
[6] Beginning in Spring 2006, Ramapo students participated in programs sponsored by the NJSCIS.

During AY 05-06 only 4 programs were sponsored entirely through Ramapo (American SW, American West, India & Australia).

[7] After Winter 2006, only one program (the India Semester) was offered entirely through Ramapo. Programs continue with the NJSCIS.

Full Semester Programs	F 03 - Spr 04		F 04 - Spr 05		F 05 - Spr 06		F 06 - Spr 07		F 07 - Spr 08		Percent Change 03/04 to 07/08	Percent Change 06/07 to 07/08
	Participants		Participants		Participants		Participants		Participants			
	No.	Pct.	No.	Pct.	No.	Pct.	No.	Pct.	No.	Pct.		
Argentina	-	-	-	-	-	-	1	2.3%	-	-	N/A	N/A
Australia	3	11.5%	6	20.7%	10	32.3%	12	27.9%	13	28.3%	333.3%	8.3%
Costa Rica	-	-	-	-	-	-	-	-	1	2.2%	N/A	N/A
Czech Republic	-	-	-	-	-	-	-	-	1	2.2%	N/A	N/A
England	10	38.5%	3	10.3%	4	12.9%	7	16.3%	3	6.5%	-70.0%	-57.1%
France	-	-	-	-	-	-	2	4.7%	2	4.3%	N/A	0.0%
Germany	-	-	10	34.5%	-	-	-	-	3	6.5%	N/A	N/A
India	13	-	10	-	14	45.2%	10	23.3%	10	21.7%	-23.1%	0.0%
Ireland	-	-	-	-	1	-	2	4.7%	3	6.5%	N/A	50.0%
Italy	-	-	-	-	-	-	2	4.7%	2	4.3%	N/A	0.0%
Japan	-	-	-	-	-	-	2	4.7%	1	2.2%	N/A	-50.0%
Kenya	-	-	-	-	-	-	1	2.3%	-	-	N/A	N/A
Mexico	-	-	-	-	-	-	-	-	1	2.2%	N/A	N/A
Poland	-	-	-	-	1	3.2%	-	-	-	-	N/A	N/A
Scotland	-	-	-	-	-	-	-	-	1	2.2%	N/A	N/A
Semester at Sea	-	-	-	-	-	-	1	2.3%	1	2.2%	N/A	0.0%
Spain	-	-	-	-	1	3.2%	3	7.0%	4	8.7%	N/A	33.3%
<b>Total</b>	<b>26</b>		<b>29</b>		<b>31</b>		<b>43</b>		<b>46</b>		<b>76.9%</b>	<b>7.0%</b>

**CUMULATIVE PERCENT CHANGE IN 2- 4 WEEK STUDY ABROAD PROGRAM PARTICIPATION**



**CUMULATIVE PERCENT CHANGE IN FULL SEMESTER STUDY ABROAD PROGRAM PARTICIPATION**

