

**SECTION IV:**

**DEGREES AWARDED AND**

**STUDENT OUTCOMES**

2007 INSTITUTIONAL PROFILE

TOTAL 2006-07 DEGREES AWARDED = 1,303

**By Age**

	Bachelor's		Master's		Total	
Less than 20	1	0.0%	0	0.0%	1	0.1%
20 to 24	869	72.0%	0	0.0%	869	66.7%
25 to 29	193	16.0%	20	20.8%	213	16.3%
30 to 39	78	6.5%	29	30.2%	107	8.2%
Greater than 39	66	5.5%	47	49.0%	113	8.7%
	1,207		96		1,303	

**By Sex**

	Bachelor's		Master's		Total	
Female	712	59.0%	81	84.4%	793	60.9%
Male	495	41.0%	15	15.6%	510	39.1%
	1,207		96		1,303	

**By Ethnicity**

	Bachelor's		Master's		Total	
American Indian/Native Alaskan	6	0.5%	0	0.0%	6	0.5%
Asian/Pacific Islander	69	5.7%	4	4.2%	73	5.6%
Black, non-Hispanic	77	6.4%	3	3.1%	80	6.1%
Hispanic	89	7.4%	3	3.1%	92	7.1%
White, non-Hispanic	966	80.0%	86	89.6%	1,052	80.7%
	1,207		96		1,303	

**By Citizenship**

	Bachelor's		Master's		Total	
U.S. Citizen/Permanent Resident	1,172	97.1%	96	100.0%	1,268	97.3%
non-Citizen/non-Resident	35	2.9%	0	0.0%	35	2.7%
	1,207		96		1,303	

**By Ethnicity and Citizenship**

	Bachelor's		Master's		Total	
American Indian/Native Alaskan	6	0.5%	0	0.0%	6	0.5%
Asian/Pacific Islander	55	4.6%	4	4.2%	59	4.5%
Black, non-Hispanic	73	6.0%	3	3.1%	76	5.8%
Hispanic	88	7.3%	3	3.1%	91	7.0%
White, non-Hispanic	950	78.7%	86	89.6%	1,036	79.5%
Nonresident Alien	35	2.9%	0	0.0%	35	2.7%
	1,207		96		1,303	

**By Status When First Admitted**

	Bachelor's		Master's		Total	
Regular Admit	565	46.8%	95	99.0%	660	50.7%
Special Admit	42	3.5%	0	0.0%	42	3.2%
EOF Admit	53	4.4%	0	0.0%	53	4.1%
Transfer Admit	534	44.2%	1	1.0%	535	41.1%
EOF Transfer Admit	13	1.1%	0	0.0%	13	1.0%
	1,207		96		1,303	

**By Degree Type**

	Bachelor's		Master's		Total	
Bachelor of Arts (BA)	717	59.4%	0	0.0%	717	55.0%
Bachelor of Science (BS)	377	31.2%	0	0.0%	377	28.9%
Bachelor of Science in Nursing (BSN)	89	7.4%	0	0.0%	89	6.8%
Bachelor of Social Work (BSW)	24	2.0%	0	0.0%	24	1.8%
Master of Arts in Liberal Studies (MALS)	0	0.0%	10	10.4%	10	0.8%
Master of Business Administration (MBA)	0	0.0%	10	10.4%	10	0.8%
Master of Science in Educational Technology (MSET)	0	0.0%	66	68.8%	66	5.1%
Master of Science in Nursing (MSN)	0	0.0%	10	10.4%	10	0.8%
	1,207		96		1,303	

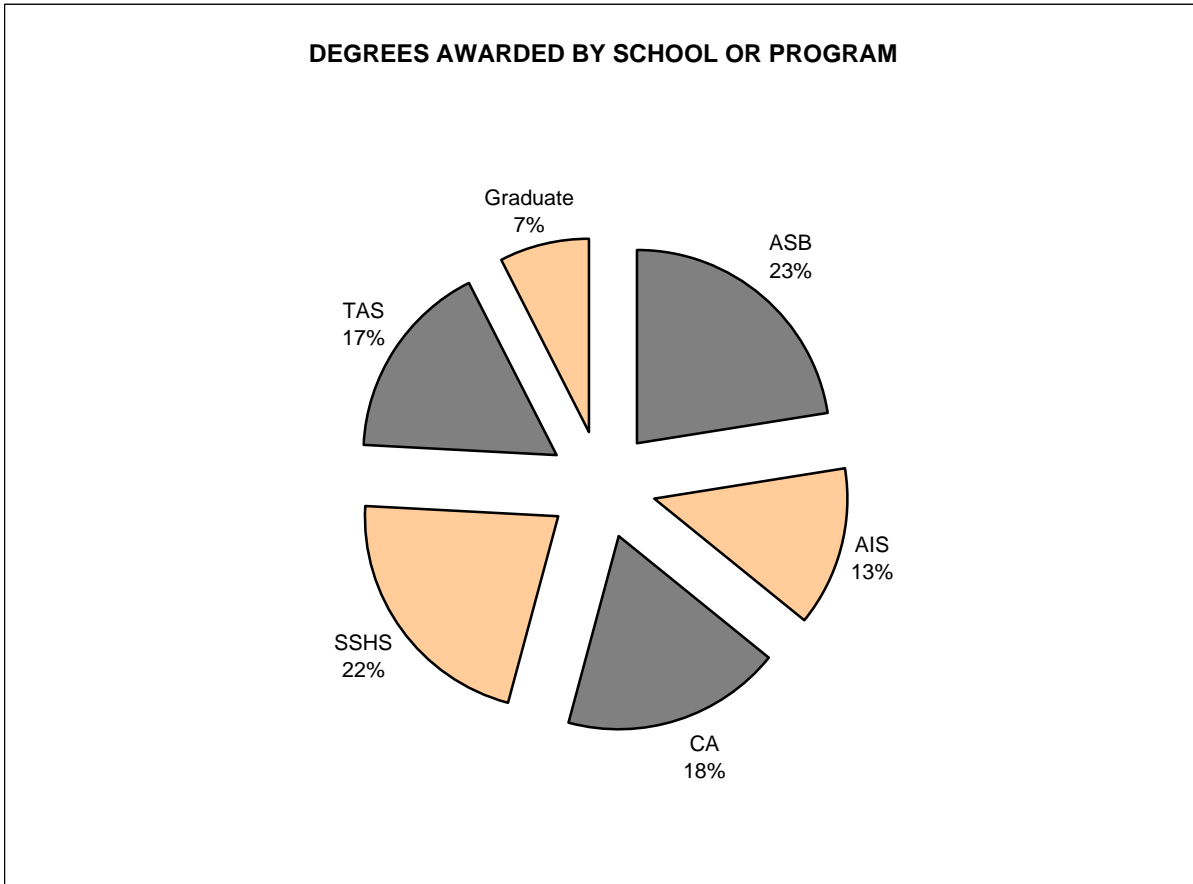
TOTAL 2006-07 DEGREES AWARDED = 1,303

	Bachelor of Arts (BA)		Bachelor of Science (BS)		Bachelor of Science in Nursing (BSN)		Bachelor of Social Work (BSW)		Master of Arts in Liberal Studies (MALS)		Master of Business Admin. (MBA)		Master of Science in Ed. Tech. (MSET)		Master of Science in Nursing (MSN)	
	Number	Percent	Number	Percent	Number	Percent	Number	Percent	Number	Percent	Number	Percent	Number	Percent	Number	Percent
<b>By Age</b>																
Less than 20	0	0.0%	1	0.3%	0	0.0%	0	0.0%	0	0.0%	0	0.0%	0	0.0%	0	0.0%
20 to 24	533	74.3%	271	71.9%	50	56.2%	15	62.5%	0	0.0%	0	0.0%	0	0.0%	0	0.0%
25 to 29	118	16.5%	60	15.9%	11	12.4%	4	16.7%	3	30.0%	1	10.0%	16	24.2%	0	0.0%
30 to 39	37	5.2%	26	6.9%	12	13.5%	3	12.5%	1	10.0%	5	50.0%	21	31.8%	2	20.0%
> 39	29	4.0%	19	5.0%	16	18.0%	2	8.3%	6	60.0%	4	40.0%	29	43.9%	8	80.0%
	717		377		89		24		10		10		66		10	
<b>By Sex</b>																
Female	428	59.7%	182	48.3%	79	88.8%	23	95.8%	6	60.0%	6	60.0%	59	89.4%	10	100.0%
Male	289	40.3%	195	51.7%	10	11.2%	1	4.2%	4	40.0%	4	40.0%	7	10.6%	0	0.0%
	717		377		89		24		10		10		66		10	
<b>By Ethnicity</b>																
Am. Ind./Nat. Al.	3	0.4%	3	0.8%	0	0.0%	0	0.0%	0	0.0%	0	0.0%	0	0.0%	0	0.0%
Asian/Pac. Is.	17	2.4%	37	9.8%	14	15.7%	1	4.2%	0	0.0%	0	0.0%	2	3.0%	2	20.0%
Black, non-Hisp.	46	6.4%	14	3.7%	14	15.7%	3	12.5%	0	0.0%	0	0.0%	1	1.5%	2	20.0%
Hispanic	55	7.7%	28	7.4%	4	4.5%	2	8.3%	1	10.0%	0	0.0%	1	1.5%	1	10.0%
White, non-Hisp.	596	83.1%	295	78.2%	57	64.0%	18	75.0%	9	90.0%	10	100.0%	62	93.9%	5	50.0%
	717		377		89		24		10		10		66		10	
<b>By Citizenship</b>																
U.S. Citizen	705	98.3%	354	93.9%	89	100.0%	24	100.0%	10	100.0%	10	100.0%	66	100.0%	10	100.0%
non-Citizen	12	1.7%	23	6.1%	0	0.0%	0	0.0%	0	0.0%	0	0.0%	0	0.0%	0	0.0%
	717		377		89		24		10		10		66		10	
<b>By Ethnicity &amp; Citizenship</b>																
Am. Ind./Nat. Al.	3	0.4%	3	0.8%	0	0.0%	0	0.0%	0	0.0%	0	0.0%	0	0.0%	0	0.0%
Asian/Pac. Is.	12	1.7%	28	7.4%	14	15.7%	1	4.2%	0	0.0%	0	0.0%	2	3.0%	2	20.0%
Black, non-Hisp.	44	6.1%	12	3.2%	14	15.7%	3	12.5%	0	0.0%	0	1.0%	1	1.5%	2	20.0%
Hispanic	55	7.7%	27	7.2%	4	4.5%	2	8.3%	1	10.0%	0	0.0%	1	1.5%	1	10.0%
White, non-Hisp.	591	82.4%	284	75.3%	57	64.0%	18	75.0%	9	90.0%	10	100.0%	62	93.9%	5	50.0%
Nonresident Alien	12	1.7%	23	6.1%	0	0.0%	0	0.0%	0	0.0%	0	0.0%	0	0.0%	0	0.0%
	717		377		89		24		10		10		66		10	
<b>By Initial Admit Type</b>																
Regular	330	46.0%	191	50.7%	37	41.6%	7	29.2%	10	100.0%	10	100.0%	65	98.5%	10	100.0%
Special	34	4.7%	6	1.6%	1	1.1%	1	4.2%	0	0.0%	0	0.0%	0	0.0%	0	0.0%
EOF	38	5.3%	9	2.4%	4	4.5%	2	8.3%	0	0.0%	0	0.0%	0	0.0%	0	0.0%
Transfer	306	42.7%	167	44.3%	47	52.8%	14	58.3%	0	0.0%	0	0.0%	1	1.5%	0	0.0%
EOF Transfer	9	1.3%	4	1.1%	0	0.0%	0	0.0%	0	0.0%	0	0.0%	0	0.0%	0	0.0%
	717		377		89		24		10		10		66		10	

TOTAL 2006-07 DEGREES AWARDED = 1,303

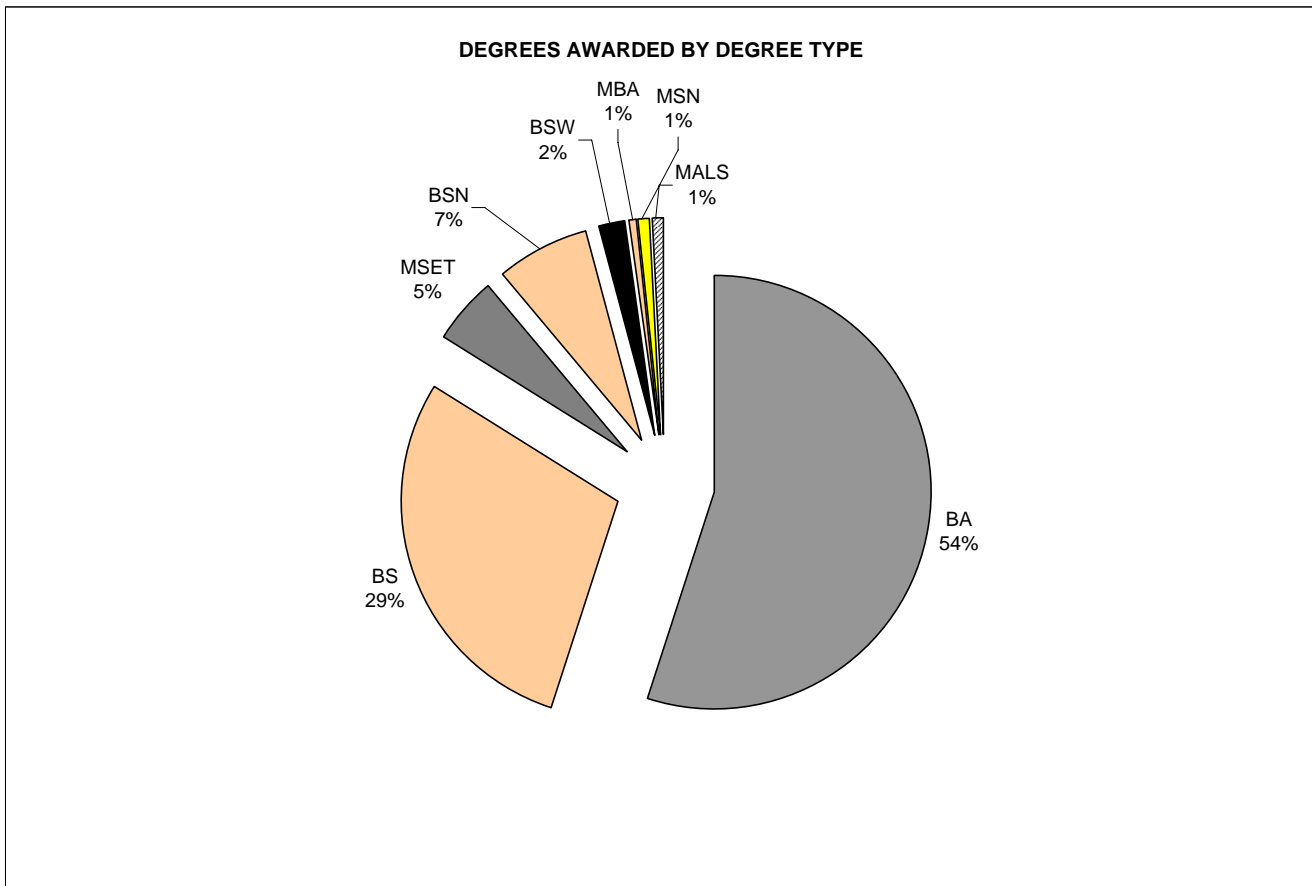
**By School and Combined Graduate Programs**

Anisfield School of Business	293	22.5%
American and International Studies	175	13.4%
Contemporary Arts	237	18.2%
Social Science and Human Services	283	21.7%
Theoretical and Applied Sciences	219	16.8%
Graduate Degree Programs (combined)	96	7.4%



TOTAL 2006-07 DEGREES AWARDED = 1,303

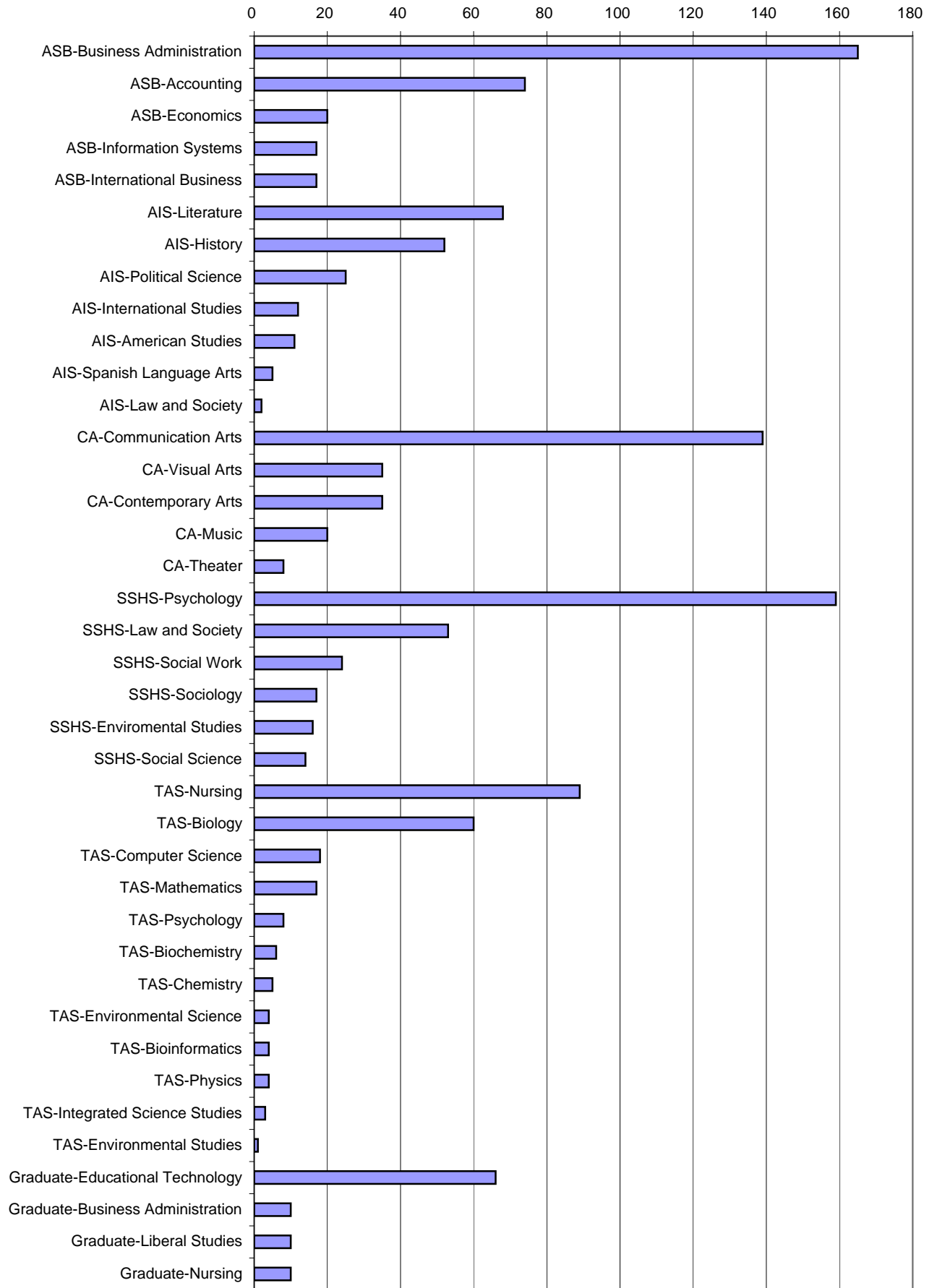
School or Program	BA		BS		BSN		BSW		MA		MBA		MSET		MSN	
	No.	Pct.	No.	Pct.	No.	Pct.	No.	Pct.	No.	Pct.	No.	Pct.	No.	Pct.	No.	Pct.
Anisfield School of Business	37	5.2%	256	67.9%	0	0.0%	0	0.0%	0	0.0%	0	0.0%	0	0.0%	0	0.0%
American & Int'l. Studies	175	24.4%	0	0.0%	0	0.0%	0	0.0%	0	0.0%	0	0.0%	0	0.0%	0	0.0%
Contemporary Arts	237	33.1%	0	0.0%	0	0.0%	0	0.0%	0	0.0%	0	0.0%	0	0.0%	0	0.0%
Soc. Science & Human Services	259	36.1%	0	0.0%	0	0.0%	24	100.0%	0	0.0%	0	0.0%	0	0.0%	0	0.0%
Theoretical & Applied Science	9	1.3%	121	32.1%	89	100.0%	0	0.0%	0	0.0%	0	0.0%	0	0.0%	0	0.0%
Grad. Liberal Studies (MALS)	0	0.0%	0	0.0%	0	0.0%	0	0.0%	10	100.0%	0	0.0%	0	0.0%	0	0.0%
Grad. Business Admin. (MBA)	0	0.0%	0	0.0%	0	0.0%	0	0.0%	0	0.0%	10	100.0%	0	0.0%	0	0.0%
Grad. Educational Tech. (MSET)	0	0.0%	0	0.0%	0	0.0%	0	0.0%	0	0.0%	0	0.0%	66	100.0%	0	0.0%
Grad. Nursing (MSN)	0	0.0%	0	0.0%	0	0.0%	0	0.0%	0	0.0%	0	0.0%	0	0.0%	10	100.0%
	717		377		89		24		10		10		66		10	



**By School and Major (with Graduate Programs)**

ASB	Accounting	74	5.7%
	Business Administration	165	12.7%
	Economics	20	1.5%
	Information Systems	17	1.3%
	International Business	17	1.3%
AIS	American Studies	11	0.8%
	History	52	4.0%
	International Studies	12	0.9%
	Law and Society	2	0.2%
	Literature	68	5.2%
	Political Science	25	1.9%
	Spanish Language Arts	5	0.4%
CA	Communication Arts	139	10.7%
	Contemporary Arts	35	2.7%
	Music	20	1.5%
	Theater	8	0.6%
	Visual Arts	35	2.7%
SSHS	Enviromental Studies	16	1.2%
	Law and Society	53	4.1%
	Psychology	159	12.2%
	Social Science	14	1.1%
	Social Work	24	1.8%
	Sociology	17	1.3%
TAS	Biochemistry	6	0.5%
	Bioinformatics	4	0.3%
	Biology	60	4.6%
	Chemistry	5	0.4%
	Computer Science	18	1.4%
	Environmental Science	4	0.3%
	Environmental Studies	1	0.1%
	Integrated Science Studies	3	0.2%
	Mathematics	17	1.3%
	Nursing	89	6.8%
	Physics	4	0.3%
	Psychology	8	0.6%
GRADUATE PROGRAMS	Liberal Studies	10	0.8%
	Business Administration	10	0.8%
	Educational Technology	66	5.1%
	Nursing	10	0.8%

**DEGREES AWARDED 2006-07 BY SCHOOL AND MAJOR/PROGRAM**



TOTAL 2006-07 DEGREES AWARDED = 1,303

**By Major or Graduate Program**

Accounting	74	5.7%
American Studies	11	0.8%
Biochemistry	6	0.5%
Bioinformatics	4	0.3%
Biology	60	4.6%
Business Administration	165	12.7%
Chemistry	5	0.4%
Communication Arts	139	10.7%
Computer Science	18	1.4%
Contemporary Arts	35	2.7%
Economics	20	1.5%
Environmental Science	4	0.3%
Environmental Studies [1]	17	1.3%
History	52	4.0%
Information Systems	17	1.3%
Integrated Science Studies	3	0.2%
International Business	17	1.3%
International Studies	12	0.9%
Law and Society [2]	55	4.2%
Literature	68	5.2%
Graduate Degree in Business Administration	10	0.8%
Graduate Degree in Educational Technology	66	5.1%
Graduate Degree in Liberal Studies	10	0.8%
Graduate Degree in Nursing	10	0.8%
Mathematics	17	1.3%
Music	20	1.5%
Nursing	89	6.8%
Physics	4	0.3%
Political Science	25	1.9%
Psychology [3]	167	12.8%
Social Science	14	1.1%
Social Work	24	1.8%
Sociology	17	1.3%
Spanish Language Studies	5	0.4%
Theater	8	0.6%
Visual Arts	35	2.7%
	1,303	100.00%

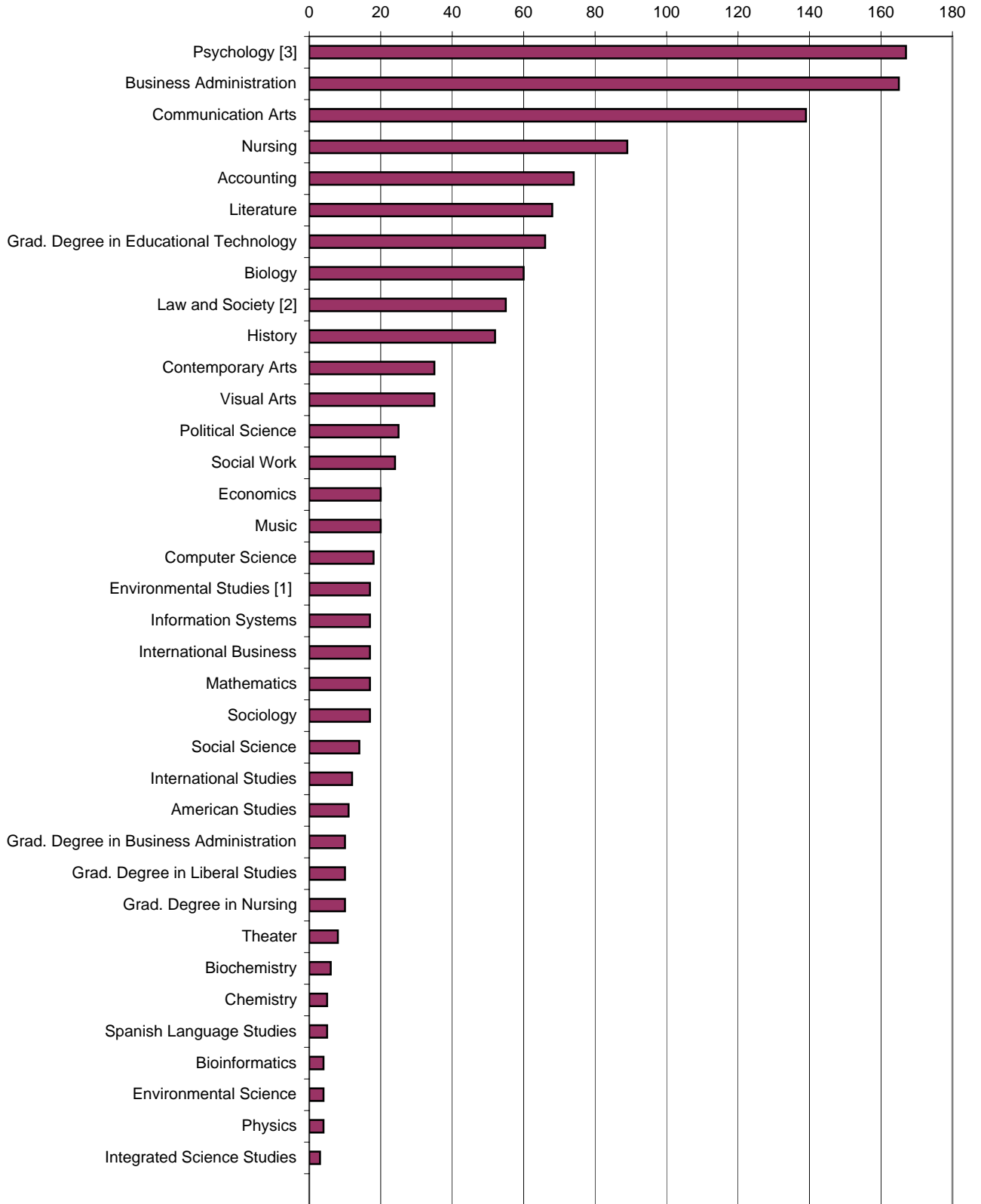
[1] Includes students from SSHS and TAS

[2] Includes students from AIS and SSHS.

[3] Includes students from TAS and SSHS.



**2006-07 DEGREES AWARDED BY MAJOR**

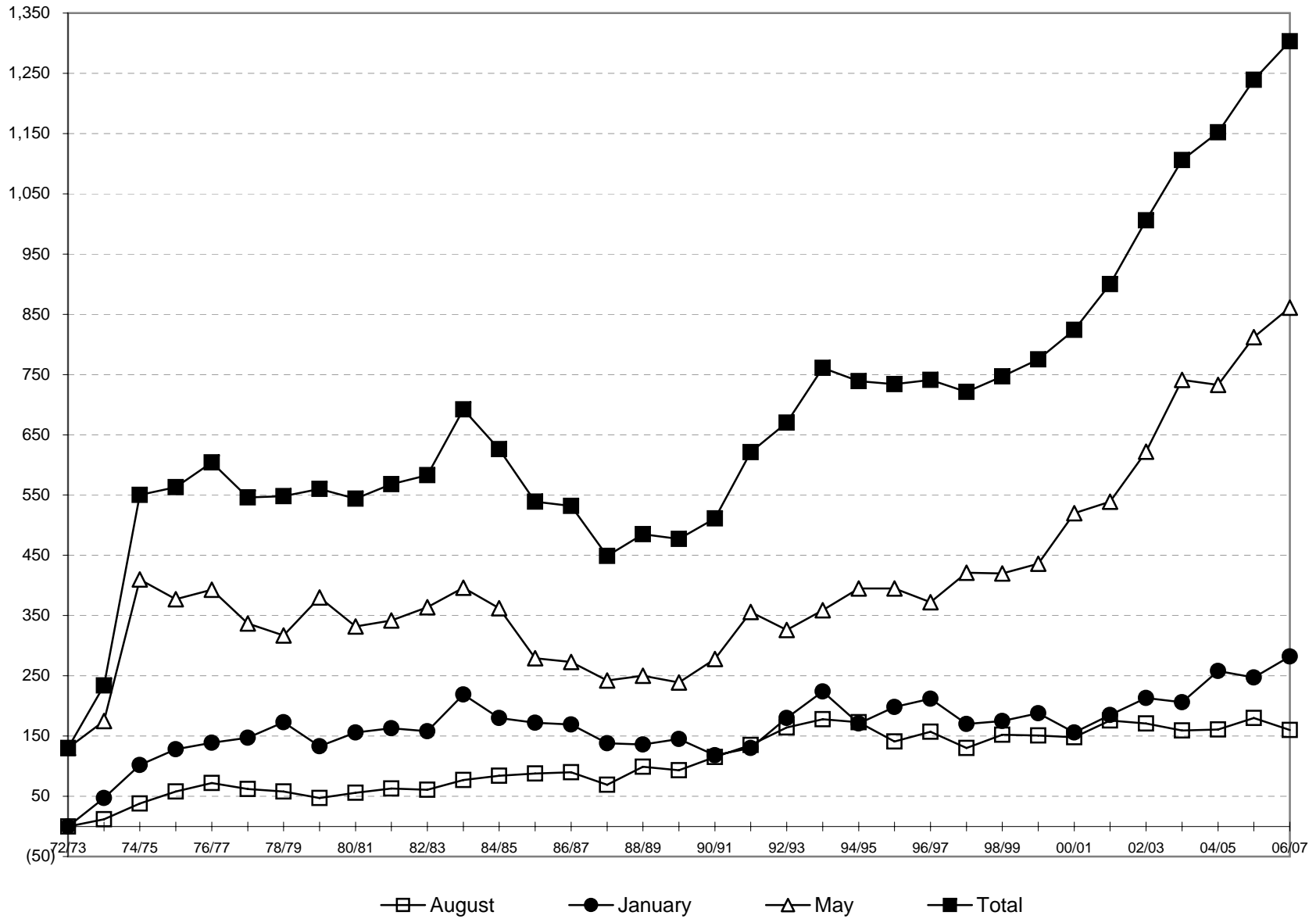


TOTAL DEGREES AWARDED, 1972 TO 2006-07\*

Year	AUGUST DEGREES			JANUARY DEGREES			MAY DEGREES			TOTAL FISCAL YEAR DEGREES			CUMULATIVE DEGREES AWARDED SINCE 1972-73
	Number of Degrees Awarded	Percent Change From Previous August	Cumulative Percent Change From Aug. 1973	Number of Degrees Awarded	Percent Change From Previous January	Cumulative Percent Change From Jan. 1974	Number of Degrees Awarded	Percent Change From Previous May	Cumulative Percent Change From May 1973	Number of Degrees Awarded	Percent Change From Previous Fiscal Year	Cumulative Percent Change From 1972-73	
1972-73	N/A	N/A	N/A	N/A	N/A	N/A	130	N/A	0.0%	130	N/A	0.0%	130
1973-74	12	N/A	0.0%	47	N/A	0.0%	175	34.6%	34.6%	234	80.0%	80.0%	364
1974-75	38	216.7%	216.7%	102	117.0%	117.0%	410	134.3%	215.4%	550	135.0%	323.1%	914
1975-76	58	52.6%	383.3%	128	25.5%	172.3%	377	-8.0%	190.0%	563	2.4%	333.1%	1,477
1976-77	72	24.1%	500.0%	139	8.6%	195.7%	393	4.2%	202.3%	604	7.3%	364.6%	2,081
1977-78	62	-13.9%	416.7%	147	5.8%	212.8%	337	-14.2%	159.2%	546	-9.6%	320.0%	2,627
1978-79	58	-6.5%	383.3%	173	17.7%	268.1%	317	-5.9%	143.8%	548	0.4%	321.5%	3,175
1979-80	47	-19.0%	291.7%	133	-23.1%	183.0%	380	19.9%	192.3%	560	2.2%	330.8%	3,735
1980-81	56	19.1%	366.7%	156	17.3%	231.9%	332	-12.6%	155.4%	544	-2.9%	318.5%	4,279
1981-82	63	12.5%	425.0%	163	4.5%	246.8%	342	3.0%	163.1%	568	4.4%	336.9%	4,847
1982-83	61	-3.2%	408.3%	158	-3.1%	236.2%	364	6.4%	180.0%	583	2.6%	348.5%	5,430
1983-84	77	26.2%	541.7%	219	38.6%	366.0%	396	8.8%	204.6%	692	18.7%	432.3%	6,122
1984-85	84	9.1%	600.0%	180	-17.8%	283.0%	362	-8.6%	178.5%	626	-9.5%	381.5%	6,748
1985-86	88	4.8%	633.3%	172	-4.4%	266.0%	279	-22.9%	114.6%	539	-13.9%	314.6%	7,287
1986-87	90	2.3%	650.0%	169	-1.7%	259.6%	273	-2.2%	110.0%	532	-1.3%	309.2%	7,819
1987-88	69	-23.3%	475.0%	138	-18.3%	193.6%	242	-11.4%	86.2%	449	-15.6%	245.4%	8,268
1988-89	99	43.5%	725.0%	136	-1.4%	189.4%	250	3.3%	92.3%	485	8.0%	273.1%	8,753
1989-90	93	-6.1%	675.0%	145	6.6%	208.5%	239	-4.4%	83.8%	477	-1.6%	266.9%	9,230
1990-91	115	23.7%	858.3%	118	-18.6%	151.1%	278	16.3%	113.8%	511	7.1%	293.1%	9,741
1991-92	135	17.4%	1025.0%	130	10.2%	176.6%	356	28.1%	173.8%	621	21.5%	377.7%	10,362
1992-93	164	21.5%	1266.7%	180	38.5%	283.0%	326	-8.4%	150.8%	670	7.9%	415.4%	11,032
1993-94	178	8.5%	1383.3%	224	24.4%	376.6%	359	10.1%	176.2%	761	13.6%	485.4%	11,793
1994-95	173	-2.8%	1341.7%	171	-23.7%	263.8%	395	10.0%	203.8%	739	-2.9%	468.5%	12,532
1995-96	141	-18.5%	1075.0%	198	15.8%	321.3%	395	0.0%	203.8%	734	-0.7%	464.6%	13,266
1996-97	157	11.3%	1208.3%	212	7.1%	351.1%	372	-5.8%	186.2%	741	1.0%	470.0%	14,007
1997-98	130	-17.2%	983.3%	170	-19.8%	261.7%	421	13.2%	223.8%	721	-2.7%	454.6%	14,728
1998-99	152	16.9%	1166.7%	175	2.9%	272.3%	420	-0.2%	223.1%	747	3.6%	474.6%	15,475
1999-00	151	-0.7%	1158.3%	188	7.4%	300.0%	436	3.8%	235.4%	775	3.7%	496.2%	16,250
2000-01	148	-2.0%	1133.3%	156	-17.0%	231.9%	520	19.3%	300.0%	824	6.3%	533.8%	17,074
2001-02	176	18.9%	1366.7%	185	18.6%	293.6%	539	3.7%	314.6%	900	9.2%	592.3%	17,974
2002-03	171	-2.8%	1325.0%	213	15.1%	353.2%	622	15.4%	378.5%	1,006	11.8%	673.8%	18,980
2003-04	159	-7.0%	1225.0%	206	-3.3%	338.3%	741	19.1%	470.0%	1,106	9.9%	750.8%	20,086
2004-05	161	1.3%	1241.7%	258	25.2%	448.9%	733	-1.1%	463.8%	1,152	4.2%	786.2%	21,238
2005-06	180	11.8%	1400.0%	247	-4.3%	425.5%	812	10.8%	524.6%	1,239	7.6%	853.1%	22,477
2006-07	160	-11.1%	1233.3%	282	14.2%	500.0%	861	6.0%	562.3%	1,303	5.2%	902.3%	23,780

\* Degrees are reported on a fiscal year basis. For example, 2006-07 graduates include degree recipients from August 2006, January 2007, and May 2007.

## DEGREES AWARDED BY FISCAL YEAR, 1972-73 TO 2006-07



**DEGREES AWARDED BY AGE, 2002-03 TO 2006-07**

	2002-03		2003-04		2004-05		2005-06		2006-07		Pct. Change 02/03 to 06/07	Pct. Change 05/06 to 06/07
	No.	Pct.	No.	Pct.	No.	Pct.	No.	Pct.	No.	Pct.		
<b>Bachelor's</b>												
Less Than 20	0	0.0%	0	0.0%	0	0.0%	0	0.0%	1	0.1%	N/A	N/A
20 to 24	557	61.3%	652	64.6%	695	66.4%	758	68.7%	869	72.0%	56.0%	14.6%
25 to 29	184	20.3%	208	20.6%	203	19.4%	195	17.7%	193	16.0%	4.9%	-1.0%
30 to 39	90	9.9%	76	7.5%	83	7.9%	82	7.4%	78	6.5%	-13.3%	-4.9%
40 and Over	77	8.5%	74	7.3%	65	6.2%	68	6.2%	66	5.5%	-14.3%	-2.9%
<b>Total</b>	<b>908</b>		<b>1,010</b>		<b>1,046</b>		<b>1,103</b>		<b>1,207</b>		<b>32.9%</b>	<b>9.4%</b>

	2002-03		2003-04		2004-05		2005-06		2006-07		Pct. Change 02/03 to 06/07	Pct. Change 05/06 to 06/07
	No.	Pct.	No.	Pct.	No.	Pct.	No.	Pct.	No.	Pct.		
<b>Graduate</b>												
Less Than 20	0	0.0%	0	0.0%	0	0.0%	0	0.0%	0	0.0%	N/A	N/A
20 to 24	0	0.0%	1	1.0%	1	0.9%	1	0.7%	0	0.0%	N/A	N/A
25 to 29	20	20.4%	29	30.2%	34	32.1%	42	30.9%	20	20.8%	0.0%	-52.4%
30 to 39	33	33.7%	38	39.6%	34	32.1%	37	27.2%	29	30.2%	-12.1%	-21.6%
40 and Over	45	45.9%	28	29.2%	37	34.9%	56	41.2%	47	49.0%	4.4%	-16.1%
<b>Total</b>	<b>98</b>		<b>96</b>		<b>106</b>		<b>136</b>		<b>96</b>		<b>-2.0%</b>	<b>-29.4%</b>

<b>Total</b>	2002-03		2003-04		2004-05		2005-06		2006-07		Pct. Change 02/03 to 06/07	Pct. Change 05/06 to 06/07
	No.	Pct.	No.	Pct.	No.	Pct.	No.	Pct.	No.	Pct.		
Less Than 20	0	0.0%	0	0.0%	0	0.0%	0	0.0%	1	0.1%	N/A	N/A
20 to 24	557	55.4%	653	59.0%	696	60.4%	759	61.3%	869	66.7%	56.0%	14.5%
25 to 29	204	20.3%	237	21.4%	237	20.6%	237	19.1%	213	16.3%	4.4%	-10.1%
30 to 39	123	12.2%	114	10.3%	117	10.2%	119	9.6%	107	8.2%	-13.0%	-10.1%
40 and Over	122	12.1%	102	9.2%	102	8.9%	124	10.0%	113	8.7%	-7.4%	-8.9%
<b>Total</b>	<b>1,006</b>		<b>1,106</b>		<b>1,152</b>		<b>1,239</b>		<b>1,303</b>		<b>29.5%</b>	<b>13.1%</b>



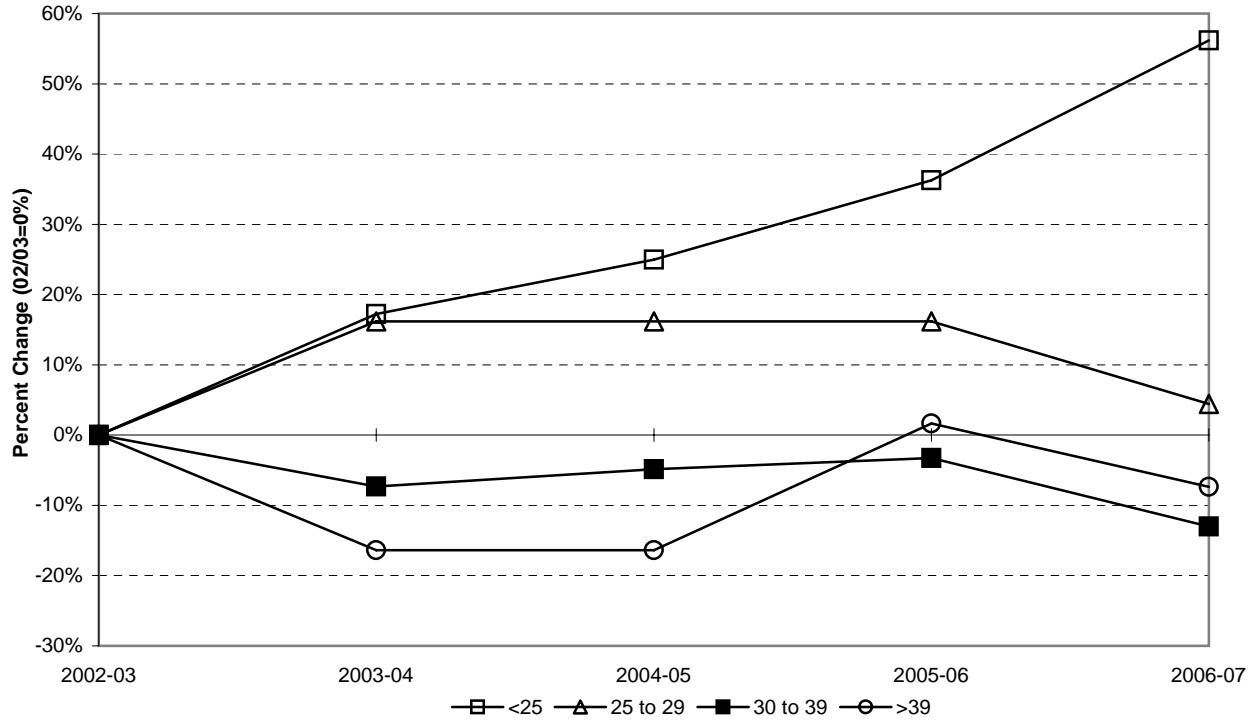
**DEGREES AWARDED BY SEX, 2002-03 TO 2006-07**

	2002-03		2003-04		2004-05		2005-06		2006-07		Pct. Change 02/03 to 06/07	Pct. Change 05/06 to 06/07
	No.	Pct.	No.	Pct.	No.	Pct.	No.	Pct.	No.	Pct.		
<b>Bachelor's</b>												
Female	597	65.7%	604	59.8%	671	64.1%	694	62.9%	712	59.0%	19.3%	2.6%
Male	311	34.3%	406	40.2%	375	35.9%	409	37.1%	495	41.0%	59.2%	21.0%
<b>Total</b>	<b>908</b>		<b>1,010</b>		<b>1,046</b>		<b>1,103</b>		<b>1,207</b>		<b>32.9%</b>	<b>9.4%</b>

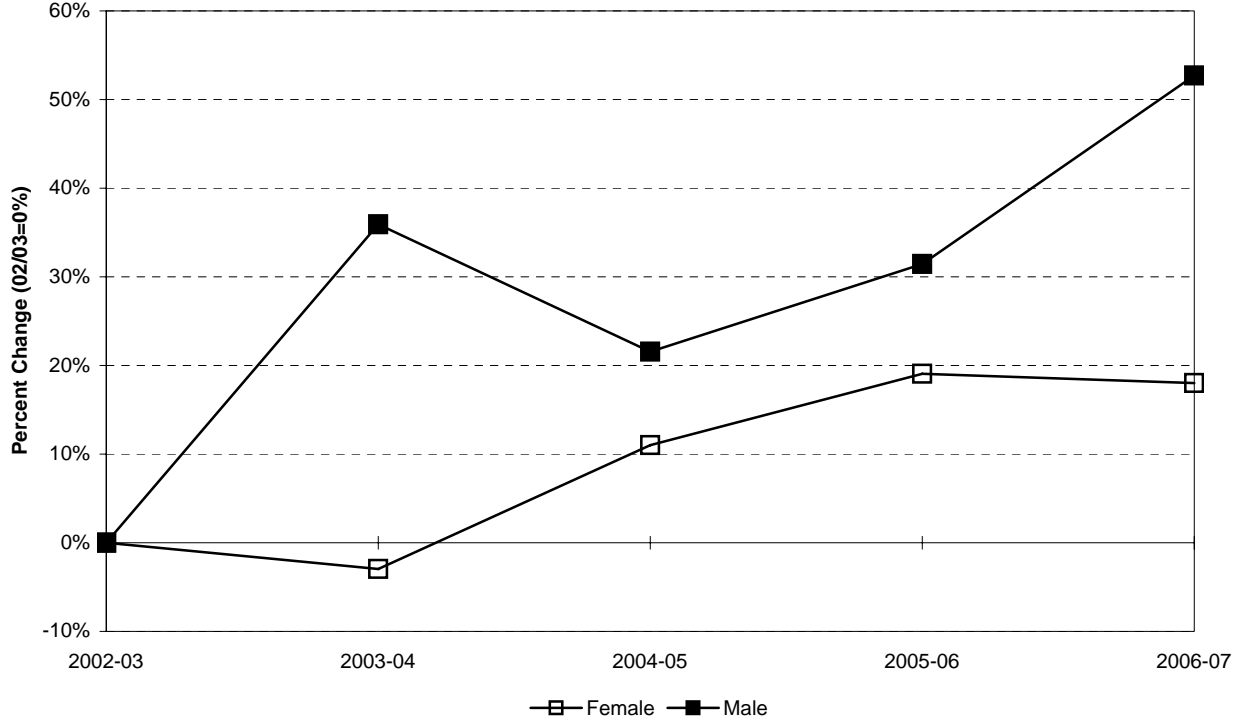
	2002-03		2003-04		2004-05		2005-06		2006-07		Pct. Change 02/03 to 06/07	Pct. Change 05/06 to 06/07
	No.	Pct.	No.	Pct.	No.	Pct.	No.	Pct.	No.	Pct.		
<b>Graduate</b>												
Female	75	76.5%	48	50.0%	75	70.8%	106	77.9%	81	84.4%	8.0%	-23.6%
Male	23	23.5%	48	50.0%	31	29.2%	30	22.1%	15	15.6%	-34.8%	-50.0%
<b>Total</b>	<b>98</b>		<b>96</b>		<b>106</b>		<b>136</b>		<b>96</b>		<b>-2.0%</b>	<b>-29.4%</b>

<b>Total</b>	2002-03		2003-04		2004-05		2005-06		2006-07		Pct. Change 02/03 to 06/07	Pct. Change 05/06 to 06/07
	No.	Pct.	No.	Pct.	No.	Pct.	No.	Pct.	No.	Pct.		
Female	672	66.8%	652	59.0%	746	64.8%	800	64.6%	793	60.9%	18.0%	-0.9%
Male	334	33.2%	454	41.0%	406	35.2%	439	35.4%	510	39.1%	52.7%	16.2%
<b>Total</b>	<b>1,006</b>		<b>1,106</b>		<b>1,152</b>		<b>1,239</b>		<b>1,303</b>		<b>29.5%</b>	<b>13.1%</b>

**CUMULATIVE PERCENT CHANGE IN DEGREES AWARDED BY AGE**



**CUMULATIVE PERCENT CHANGE IN DEGREES AWARDED BY SEX**



**DEGREES AWARDED BY ETHNICITY, 2002-03 TO 2006-07**

Bachelor's	2002-03		2003-04		2004-05		2005-06		2006-07		Pct. Change 02/03 to 06/07	Pct. Change 05/06 to 06/07
	No.	Pct.	No.	Pct.	No.	Pct.	No.	Pct.	No.	Pct.		
American Indian/Nat. Al.	5	0.6%	1	0.1%	2	0.2%	4	0.4%	6	0.5%	20.0%	50.0%
Asian/Pacific Islander	48	5.3%	54	5.3%	64	6.1%	56	5.1%	69	5.7%	43.8%	23.2%
Black, non-Hispanic	65	7.2%	61	6.0%	66	6.3%	78	7.1%	77	6.4%	18.5%	-1.3%
Hispanic	72	7.9%	61	6.0%	60	5.7%	81	7.3%	89	7.4%	23.6%	9.9%
White, non-Hispanic	718	79.1%	833	82.5%	854	81.6%	884	80.1%	966	80.0%	34.5%	9.3%
<b>Total</b>	<b>908</b>		<b>1,010</b>		<b>1,046</b>		<b>1,103</b>		<b>1,207</b>		<b>32.9%</b>	<b>9.4%</b>

Graduate	2002-03		2003-04		2004-05		2005-06		2006-07		Pct. Change 02/03 to 06/07	Pct. Change 05/06 to 06/07
	No.	Pct.	No.	Pct.	No.	Pct.	No.	Pct.	No.	Pct.		
American Indian/Nat. Al.	1	1.0%	0	0.0%	0	0.0%	1	0.7%	0	0.0%	-100.0%	-100.0%
Asian/Pacific Islander	0	0.0%	9	9.4%	2	1.9%	1	0.7%	4	4.2%	N/A	300.0%
Black, non-Hispanic	3	3.1%	2	2.1%	4	3.8%	6	4.4%	3	3.1%	0.0%	-50.0%
Hispanic	1	1.0%	1	1.0%	3	2.8%	5	3.7%	3	3.1%	200.0%	-40.0%
White, non-Hispanic	93	94.9%	84	87.5%	97	91.5%	123	90.4%	86	89.6%	-7.5%	-30.1%
<b>Total</b>	<b>98</b>		<b>96</b>		<b>106</b>		<b>136</b>		<b>96</b>		<b>-2.0%</b>	<b>-29.4%</b>

Total	2002-03		2003-04		2004-05		2005-06		2006-07		Pct. Change 02/03 to 06/07	Pct. Change 05/06 to 06/07
	No.	Pct.	No.	Pct.	No.	Pct.	No.	Pct.	No.	Pct.		
American Indian/Nat. Al.	6	0.6%	1	0.1%	2	0.2%	5	0.4%	6	0.5%	0.0%	20.0%
Asian/Pacific Islander	48	4.8%	63	5.7%	66	5.7%	57	4.6%	73	5.6%	52.1%	28.1%
Black, non-Hispanic	68	6.8%	63	5.7%	70	6.1%	84	6.8%	80	6.1%	17.6%	-4.8%
Hispanic	73	7.3%	62	5.6%	63	5.5%	86	6.9%	92	7.1%	26.0%	7.0%
White, non-Hispanic	811	80.6%	917	82.9%	951	82.6%	1,007	81.3%	1,052	80.7%	29.7%	4.5%
<b>Total</b>	<b>1,006</b>		<b>1,106</b>		<b>1,152</b>		<b>1,239</b>		<b>1,303</b>		<b>29.5%</b>	<b>5.2%</b>



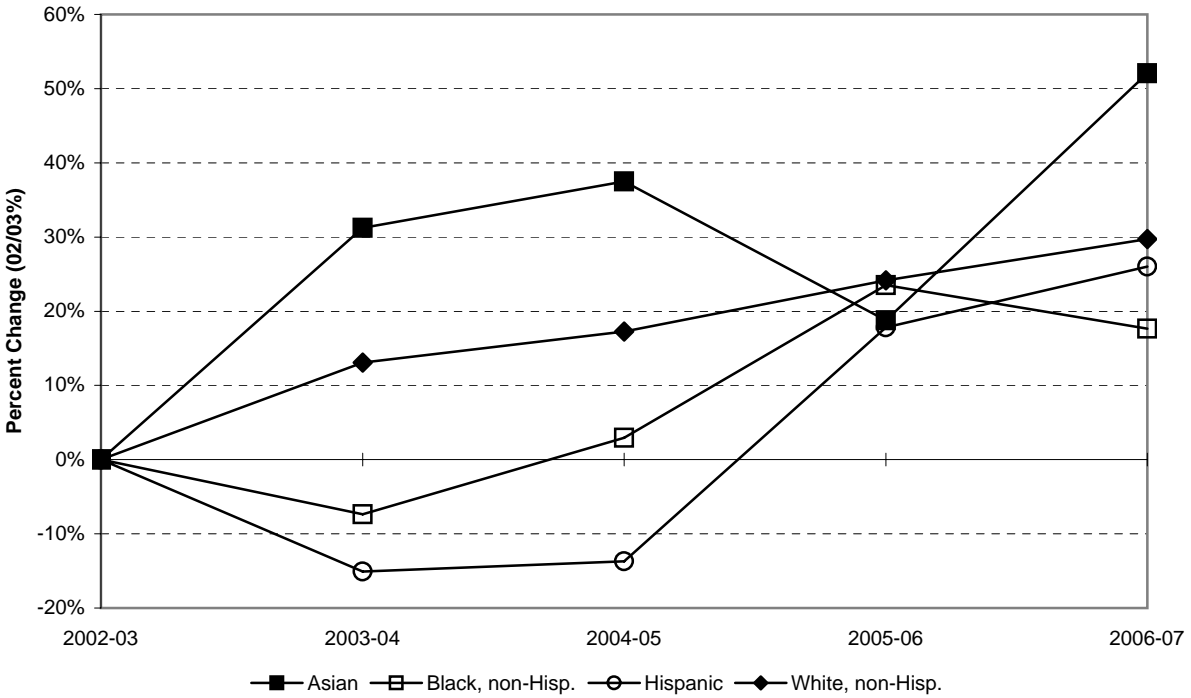
**DEGREES AWARDED BY INITIAL ADMISSIONS TYPE, 2002-03 TO 2006-07**

Bachelor's	2002-03		2003-04		2004-05		2005-06		2006-07		Pct. Change 02/03 to 06/07	Pct. Change 05/06 to 06/07
	No.	Pct.	No.	Pct.	No.	Pct.	No.	Pct.	No.	Pct.		
Regular	337	37.1%	442	43.8%	450	43.0%	486	44.1%	565	46.8%	67.7%	16.3%
EOF non-Transfer	45	5.0%	34	3.4%	41	3.9%	41	3.7%	53	4.4%	17.8%	29.3%
EOF Transfer	5	0.6%	10	1.0%	9	0.9%	9	0.8%	13	1.1%	160.0%	44.4%
Special	28	3.1%	35	3.5%	39	3.7%	46	4.2%	42	3.5%	50.0%	-8.7%
Transfer	493	54.3%	489	48.4%	507	48.5%	521	47.2%	534	44.2%	8.3%	2.5%
<b>Total</b>	<b>908</b>		<b>1,010</b>		<b>1,046</b>		<b>1,103</b>		<b>1,207</b>		<b>32.9%</b>	<b>9.4%</b>

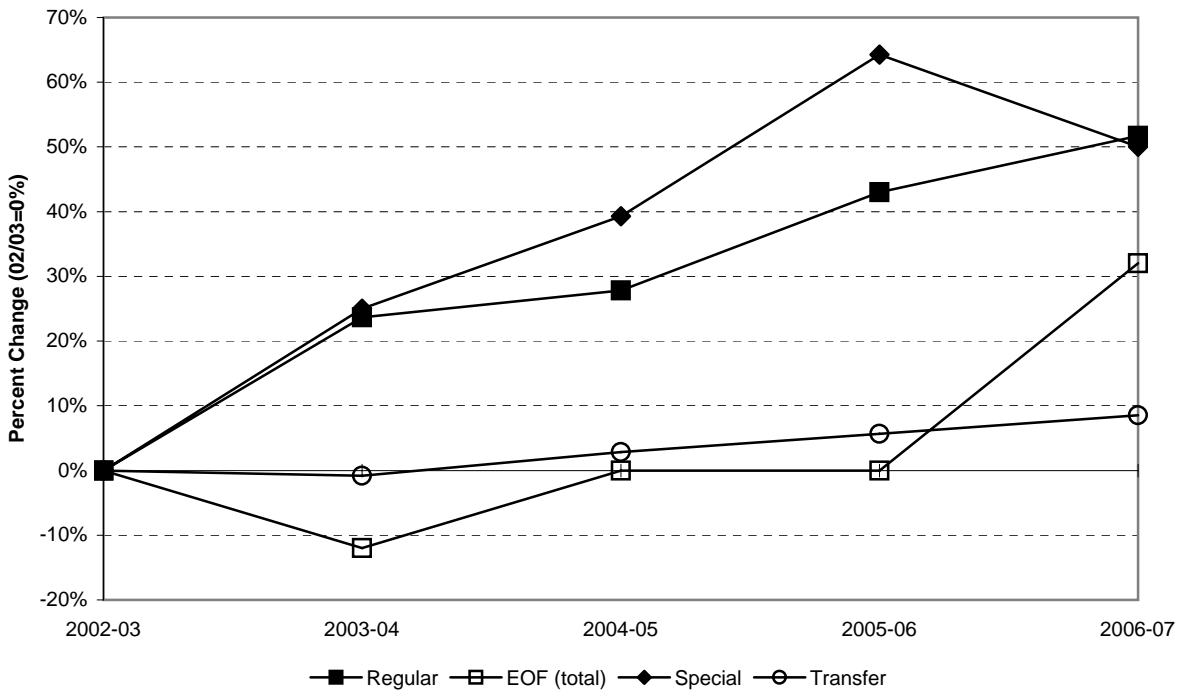
Graduate	2002-03		2003-04		2004-05		2005-06		2006-07		Pct. Change 02/03 to 06/07	Pct. Change 05/06 to 06/07
	No.	Pct.	No.	Pct.	No.	Pct.	No.	Pct.	No.	Pct.		
Regular	98	100.0%	96	100.0%	106	100.0%	136	100.0%	95	99.0%	-3.1%	-30.1%
EOF non-Transfer	0	0.0%	0	0.0%	0	0.0%	0	0.0%	0	0.0%	N/A	N/A
EOF Transfer	0	0.0%	0	0.0%	0	0.0%	0	0.0%	0	0.0%	N/A	N/A
Special	0	0.0%	0	0.0%	0	0.0%	0	0.0%	0	0.0%	N/A	N/A
Transfer	0	0.0%	0	0.0%	0	0.0%	0	0.0%	1	1.0%	N/A	N/A
<b>Total</b>	<b>98</b>		<b>96</b>		<b>106</b>		<b>136</b>		<b>96</b>		<b>-2.0%</b>	<b>-29.4%</b>

Total	2002-03		2003-04		2004-05		2005-06		2006-07		Pct. Change 02/03 to 06/07	Pct. Change 05/06 to 06/07
	No.	Pct.	No.	Pct.	No.	Pct.	No.	Pct.	No.	Pct.		
Regular	435	43.2%	538	48.6%	556	48.3%	622	50.2%	660	50.7%	51.7%	6.1%
EOF non-Transfer	45	4.5%	34	3.1%	41	3.6%	41	3.3%	53	4.1%	17.8%	29.3%
EOF Transfer	5	0.5%	10	0.9%	9	0.8%	9	0.7%	13	1.0%	160.0%	44.4%
Special	28	2.8%	35	3.2%	39	3.4%	46	3.7%	42	3.2%	50.0%	-8.7%
Transfer	493	49.0%	489	44.2%	507	44.0%	521	42.1%	535	41.1%	8.5%	2.7%
<b>Total</b>	<b>1,006</b>		<b>1,106</b>		<b>1,152</b>		<b>1,239</b>		<b>1,303</b>		<b>29.5%</b>	<b>5.2%</b>

**CUMULATIVE PERCENT CHANGE IN DEGREES AWARDED BY ETHNICITY**



**CUMULATIVE PCT. CHANGE IN DEGREES AWARDED BY INITIAL ADMIT TYPE**



**DEGREES AWARDED BY ETHNICITY AND CITIZENSHIP, 2002-03 TO 2006-07**

Bachelor's	2002-03		2003-04		2004-05		2005-06		2006-07		Pct. Change 02/03 to 06/07	Pct. Change 05/06 to 06/07
	No.	Pct.	No.	Pct.	No.	Pct.	No.	Pct.	No.	Pct.		
American Indian/Nat. Al.	5	0.6%	1	0.1%	2	0.2%	4	0.4%	6	0.5%	20.0%	50.0%
Asian/Pacific Islander	36	4.0%	37	3.7%	46	4.4%	43	3.9%	55	4.6%	52.8%	27.9%
Black, non-Hispanic	60	6.6%	57	5.6%	59	5.6%	71	6.4%	73	6.0%	21.7%	2.8%
Hispanic	70	7.7%	59	5.8%	59	5.6%	79	7.2%	88	7.3%	25.7%	11.4%
White, non-Hispanic	701	77.2%	815	80.7%	830	79.3%	863	78.2%	950	78.7%	35.5%	10.1%
Nonresident Alien	36	4.0%	41	4.1%	50	4.8%	43	3.9%	35	2.9%	-2.8%	-18.6%
<b>Total</b>	<b>908</b>		<b>1,010</b>		<b>1,046</b>		<b>1,103</b>		<b>1,207</b>		<b>32.9%</b>	<b>9.4%</b>

Graduate	2002-03		2003-04		2004-05		2005-06		2006-07		Pct. Change 02/03 to 06/07	Pct. Change 05/06 to 06/07
	No.	Pct.	No.	Pct.	No.	Pct.	No.	Pct.	No.	Pct.		
American Indian/Nat. Al.	1	1.0%	0	0.0%	0	0.0%	1	0.7%	0	0.0%	-100.0%	N/A
Asian/Pacific Islander	0	0.0%	7	7.3%	1	0.9%	0	0.0%	4	4.2%	N/A	N/A
Black, non-Hispanic	3	3.1%	2	2.1%	3	2.8%	6	4.4%	3	3.1%	0.0%	-50.0%
Hispanic	1	1.0%	1	1.0%	3	2.8%	5	3.7%	3	3.1%	200.0%	-40.0%
White, non-Hispanic	91	92.9%	82	85.4%	95	89.6%	122	89.7%	86	89.6%	-5.5%	-29.5%
Nonresident Alien	2	2.0%	4	4.2%	4	3.8%	2	1.5%	0	0.0%	-100.0%	-100.0%
<b>Total</b>	<b>98</b>		<b>96</b>		<b>106</b>		<b>136</b>		<b>96</b>		<b>-2.0%</b>	<b>-29.4%</b>

Total	2002-03		2003-04		2004-05		2005-06		2006-07		Pct. Change 02/03 to 06/07	Pct. Change 05/06 to 06/07
	No.	Pct.	No.	Pct.	No.	Pct.	No.	Pct.	No.	Pct.		
American Indian/Nat. Al.	6	0.6%	1	0.1%	2	0.2%	5	0.4%	6	0.5%	0.0%	20.0%
Asian/Pacific Islander	36	3.6%	44	4.0%	47	4.1%	43	3.5%	59	4.5%	63.9%	37.2%
Black, non-Hispanic	63	6.3%	59	5.3%	62	5.4%	77	6.2%	76	5.8%	20.6%	-1.3%
Hispanic	71	7.1%	60	5.4%	62	5.4%	84	6.8%	91	7.0%	28.2%	8.3%
White, non-Hispanic	792	78.7%	897	81.1%	925	80.3%	985	79.5%	1,036	79.5%	30.8%	5.2%
Nonresident Alien	38	3.8%	45	4.1%	54	4.7%	45	3.6%	35	2.7%	-7.9%	-22.2%
<b>Total</b>	<b>1,006</b>		<b>1,106</b>		<b>1,152</b>		<b>1,239</b>		<b>1,303</b>		<b>29.5%</b>	<b>5.2%</b>



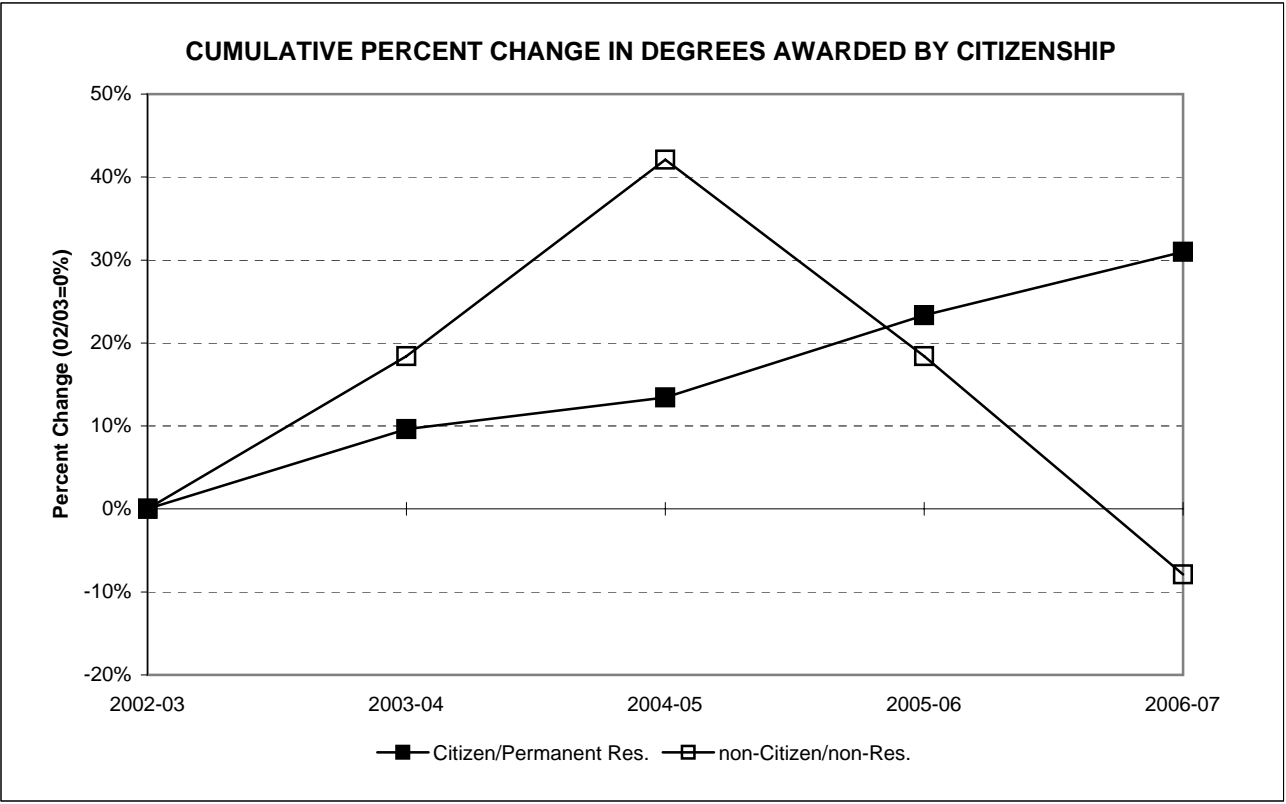
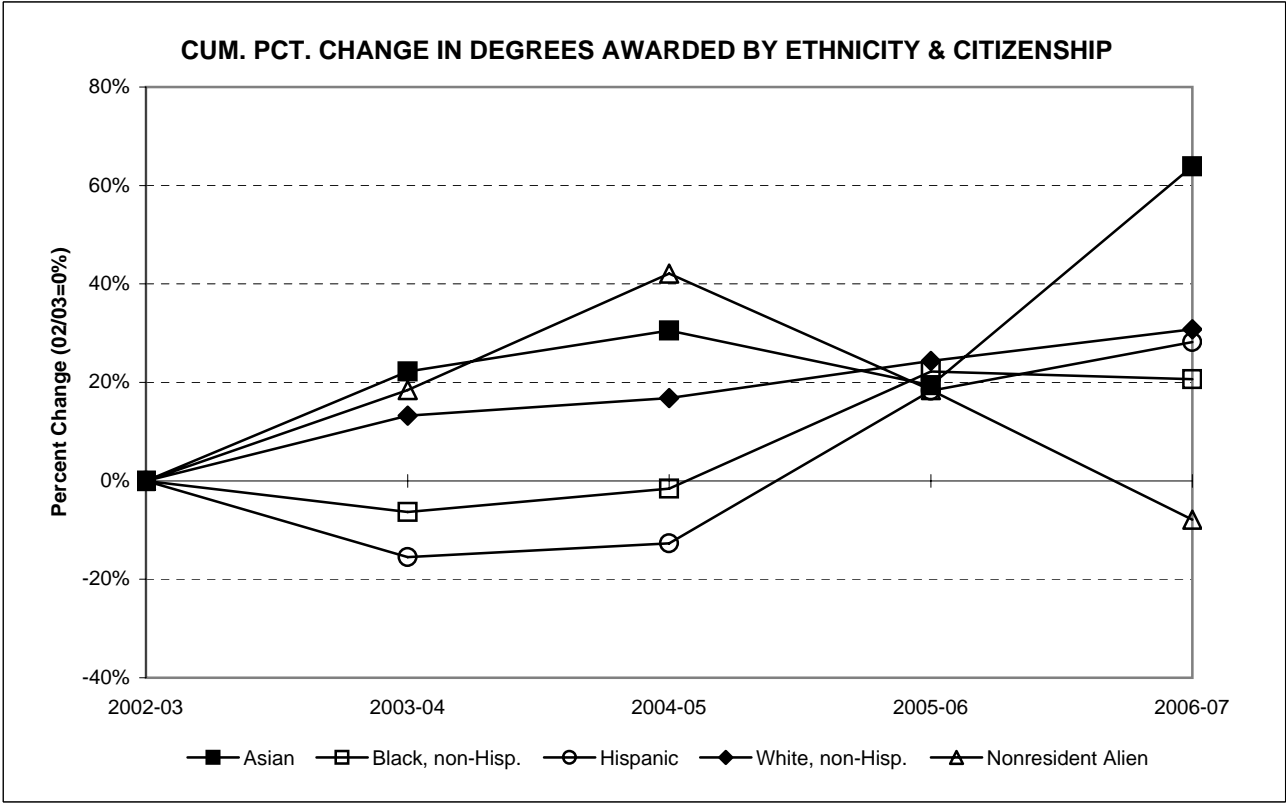
**DEGREES AWARDED BY CITIZENSHIP, 2002-03 TO 2006-07**

Bachelor's	2002-03		2003-04		2004-05		2005-06		2006-07		Pct. Change 02/03 to 06/07	Pct. Change 05/06 to 06/07
	No.	Pct.	No.	Pct.	No.	Pct.	No.	Pct.	No.	Pct.		
Citizen/Permanent Res.	872	96.0%	969	95.9%	996	95.2%	1,060	96.1%	1,172	97.1%	34.4%	10.6%
non-Citizen/non-Res.	36	4.0%	41	4.1%	50	4.8%	43	3.9%	35	2.9%	-2.8%	-18.6%
<b>Total</b>	<b>908</b>		<b>1,010</b>		<b>1,046</b>		<b>1,103</b>		<b>1,207</b>		<b>32.9%</b>	<b>9.4%</b>

Graduate	2002-03		2003-04		2004-05		2005-06		2006-07		Pct. Change 02/03 to 06/07	Pct. Change 05/06 to 06/07
	No.	Pct.	No.	Pct.	No.	Pct.	No.	Pct.	No.	Pct.		
Citizen/Permanent Res.	96	98.0%	92	95.8%	102	96.2%	134	98.5%	96	100.0%	0.0%	-28.4%
non-Citizen/non-Res.	2	2.0%	4	4.2%	4	3.8%	2	1.5%	0	0.0%	-100.0%	-100.0%
<b>Total</b>	<b>98</b>		<b>96</b>		<b>106</b>		<b>136</b>		<b>96</b>		<b>-2.0%</b>	<b>-29.4%</b>

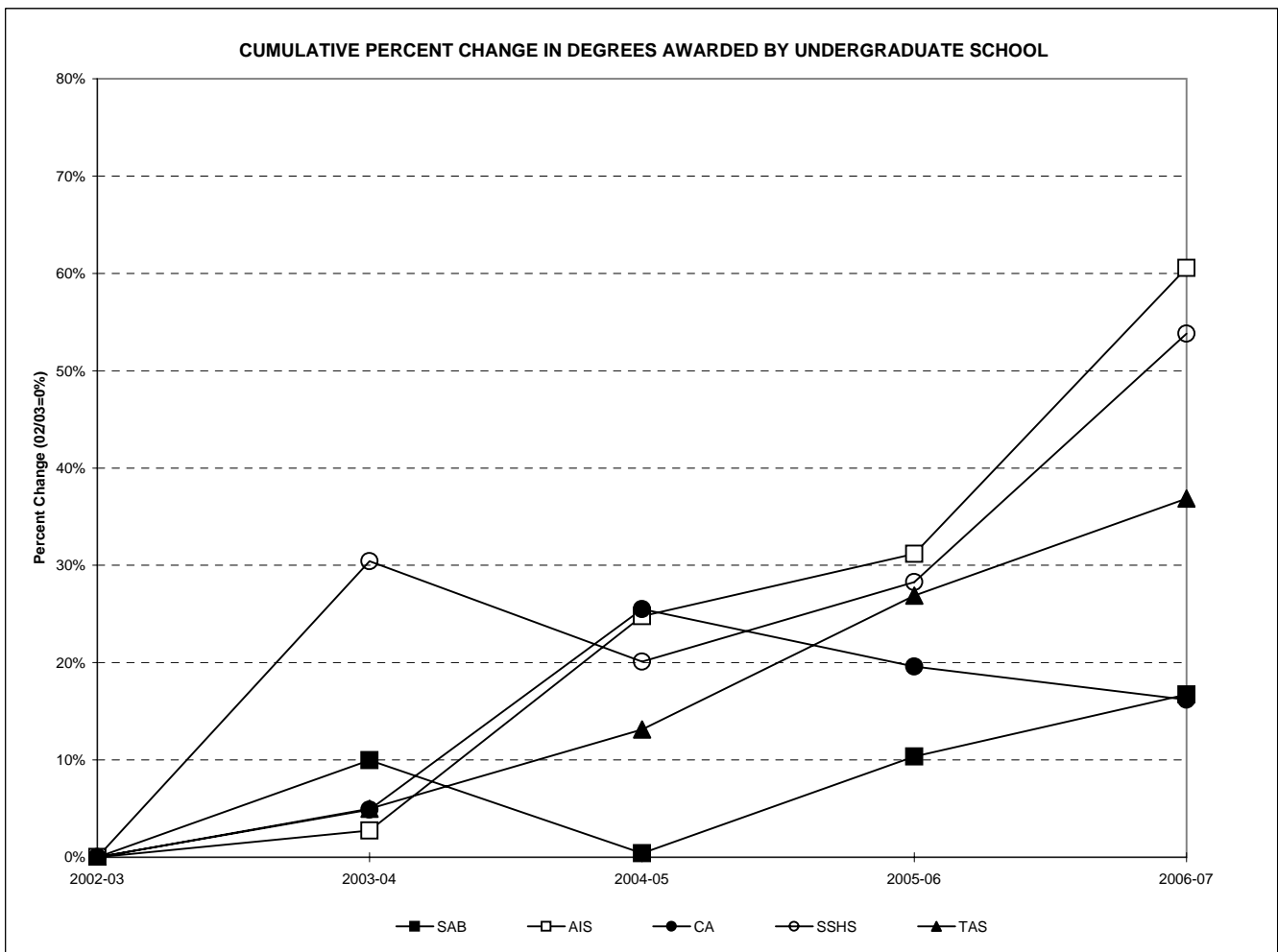
Total	2002-03		2003-04		2004-05		2005-06		2006-07		Pct. Change 02/03 to 06/07	Pct. Change 05/06 to 06/07
	No.	Pct.	No.	Pct.	No.	Pct.	No.	Pct.	No.	Pct.		
Citizen/Permanent Res.	968	96.2%	1,061	95.9%	1,098	95.3%	1,194	96.4%	1,268	97.3%	31.0%	6.2%
non-Citizen/non-Res.	38	3.8%	45	4.1%	54	4.7%	45	3.6%	35	2.7%	-7.9%	-22.2%
<b>Total</b>	<b>1,006</b>		<b>1,106</b>		<b>1,152</b>		<b>1,239</b>		<b>1,303</b>		<b>29.5%</b>	<b>5.2%</b>





**DEGREES AWARDED BY UNDERGRADUATE SCHOOL AND COMBINED GRADUATE PROGRAMS, 2002-03 TO 2006-07**

Schools	2002-03		2003-04		2004-05		2005-06		2006-07		Percent Chg. 02/03 to 06/07	Percent Chg. 05/06 to 06/07
	No.	Pct.	No.	Pct.	No.	Pct.	No.	Pct.	No.	Pct.		
Anisfield School of Business	251	25.0%	276	25.0%	252	21.9%	277	22.4%	293	22.5%	16.7%	5.8%
American & Int'l. Studies	109	10.8%	112	10.1%	136	11.8%	143	11.5%	175	13.4%	60.6%	22.4%
Contemporary Arts	204	20.3%	214	19.3%	256	22.2%	244	19.7%	237	18.2%	16.2%	-2.9%
Soc. Science & Human Services	184	18.3%	240	21.7%	221	19.2%	236	19.0%	283	21.7%	53.8%	19.9%
Theoretical & Applied Science	160	15.9%	168	15.2%	181	15.7%	203	16.4%	219	16.8%	36.9%	7.9%
Graduate Programs	98	9.7%	96	8.7%	106	9.2%	136	11.0%	96	7.4%	-2.0%	-29.4%
<b>Total</b>	<b>1,006</b>		<b>1,106</b>		<b>1,152</b>		<b>1,239</b>		<b>1,303</b>		<b>29.5%</b>	<b>5.2%</b>



**DEGREES AWARDED BY SCHOOL AND MAJOR (WITH GRADUATE PROGRAMS), 2002-03 TO 2006-07**

Majors/Programs	2002-03		2003-04		2004-05		2005-06		2006-07		Percent Chg. 02/03 to 06/07	Percent Chg. 05/06 to 06/07
	No.	Pct.	No.	Pct.	No.	Pct.	No.	Pct.	No.	Pct.		
Accounting	39	3.9%	35	3.2%	41	3.6%	73	5.9%	74	5.7%	89.7%	1.4%
Business Administration	128	12.7%	159	14.4%	136	11.8%	141	11.4%	165	12.7%	28.9%	17.0%
Economics	16	1.6%	15	1.4%	8	0.7%	8	0.6%	20	1.5%	25.0%	150.0%
Information Systems	52	5.2%	48	4.3%	41	3.6%	38	3.1%	17	1.3%	-67.3%	-55.3%
International Business	16	1.6%	19	1.7%	26	2.3%	17	1.4%	17	1.3%	6.3%	0.0%
<b>Sub-Total: ASB</b>	<b>251</b>	<b>25.0%</b>	<b>276</b>	<b>25.0%</b>	<b>252</b>	<b>21.9%</b>	<b>277</b>	<b>22.4%</b>	<b>293</b>	<b>22.5%</b>	<b>16.7%</b>	<b>5.8%</b>
American Studies	8	0.8%	7	0.6%	3	0.3%	5	0.4%	11	0.8%	37.5%	120.0%
History	28	2.8%	34	3.1%	28	2.4%	36	2.9%	52	4.0%	85.7%	44.4%
International Studies	9	0.9%	6	0.5%	10	0.9%	12	1.0%	12	0.9%	33.3%	0.0%
Law and Society	8	0.8%	6	0.5%	11	1.0%	9	0.7%	2	0.2%	-75.0%	-77.8%
Literature	38	3.8%	47	4.2%	70	6.1%	49	4.0%	68	5.2%	78.9%	38.8%
Political Science	18	1.8%	12	1.1%	14	1.2%	27	2.2%	25	1.9%	38.9%	-7.4%
Spanish Language Studies	--	--	--	--	--	--	5	0.4%	5	0.4%	N/A	0.0%
<b>Sub-Total: AIS</b>	<b>109</b>	<b>10.8%</b>	<b>112</b>	<b>10.1%</b>	<b>136</b>	<b>11.8%</b>	<b>143</b>	<b>11.5%</b>	<b>175</b>	<b>13.4%</b>	<b>60.6%</b>	<b>22.4%</b>
Communication Arts	143	14.2%	146	13.2%	165	14.3%	171	13.8%	139	10.7%	-2.8%	-18.7%
Contemporary Arts	10	1.0%	20	1.8%	18	1.6%	21	1.7%	35	2.7%	250.0%	66.7%
Fine Arts <sup>[1]</sup>	10	1.0%	3	0.3%	7	0.6%	1	0.1%	--	0.0%	N/A	N/A
Music	7	0.7%	8	0.7%	11	1.0%	10	0.8%	20	1.5%	185.7%	100.0%
Theater	10	1.0%	21	1.9%	19	1.6%	15	1.2%	8	0.6%	-20.0%	-46.7%
Visual Arts	24	2.4%	16	1.4%	36	3.1%	26	2.1%	35	2.7%	45.8%	34.6%
<b>Sub-Total: CA</b>	<b>204</b>	<b>20.3%</b>	<b>214</b>	<b>19.3%</b>	<b>256</b>	<b>22.2%</b>	<b>244</b>	<b>19.7%</b>	<b>237</b>	<b>18.2%</b>	<b>16.2%</b>	<b>-2.9%</b>
Economics <sup>[2]</sup>	2	0.2%	1	0.1%	2	0.2%	2	0.2%	--	0.0%	N/A	N/A
Environmental Studies	1	0.1%	0	0.0%	3	0.3%	0	0.0%	16	1.2%	1500.0%	N/A
History <sup>[2]</sup>	1	0.1%	2	0.2%	1	0.1%	1	0.1%	--	0.0%	N/A	N/A
Law and Society	7	0.7%	29	2.6%	38	3.3%	41	3.3%	53	4.1%	657.1%	29.3%
Psychology	112	11.1%	148	13.4%	136	11.8%	126	10.2%	159	12.2%	42.0%	26.2%
Social Science	18	1.8%	13	1.2%	8	0.7%	12	1.0%	14	1.1%	-22.2%	16.7%
Social Work	20	2.0%	30	2.7%	21	1.8%	30	2.4%	24	1.8%	20.0%	-20.0%
Sociology	23	2.3%	17	1.5%	12	1.0%	24	1.9%	17	1.3%	-26.1%	-29.2%
<b>Sub-Total: SSHS</b>	<b>184</b>	<b>18.3%</b>	<b>240</b>	<b>21.7%</b>	<b>221</b>	<b>19.2%</b>	<b>236</b>	<b>19.0%</b>	<b>283</b>	<b>21.7%</b>	<b>53.8%</b>	<b>19.9%</b>
Biochemistry	4	0.4%	4	0.4%	3	0.3%	3	0.2%	6	0.5%	50.0%	100.0%
Bioinformatics	--	--	1	0.1%	2	0.2%	1	0.1%	4	0.3%	N/A	300.0%
Biology	18	1.8%	26	2.4%	25	2.2%	40	3.2%	60	4.6%	233.3%	50.0%
Chemistry	4	0.4%	2	0.2%	4	0.3%	2	0.2%	5	0.4%	25.0%	150.0%
Computer Science	14	1.4%	15	1.4%	25	2.2%	17	1.4%	18	1.4%	28.6%	5.9%
Environmental Science	7	0.7%	3	0.3%	2	0.2%	5	0.4%	4	0.3%	-42.9%	-20.0%
Environmental Studies	11	1.1%	21	1.9%	16	1.4%	13	1.0%	1	0.1%	-90.9%	-92.3%
Integrated Science Studies	--	--	--	--	1	0.1%	0	0.0%	3	0.0%	N/A	N/A
Mathematics	8	0.8%	4	0.4%	8	0.7%	10	0.8%	17	1.3%	112.5%	70.0%
Nursing	69	6.9%	62	5.6%	73	6.3%	65	5.2%	89	6.8%	29.0%	36.9%
Physics	2	0.2%	2	0.2%	1	0.1%	6	0.5%	4	0.3%	100.0%	-33.3%
Psychology	23	2.3%	28	2.5%	21	1.8%	41	3.3%	8	0.6%	-65.2%	-80.5%
<b>Sub-Total: TAS</b>	<b>160</b>	<b>15.9%</b>	<b>168</b>	<b>15.2%</b>	<b>181</b>	<b>15.7%</b>	<b>203</b>	<b>16.4%</b>	<b>219</b>	<b>16.8%</b>	<b>36.9%</b>	<b>7.9%</b>
M.A. in Liberal Studies	10	1.0%	9	0.8%	4	0.3%	11	0.9%	10	0.8%	0.0%	-9.1%
M. in Business Admin.	8	0.8%	26	2.4%	19	1.6%	14	1.1%	10	0.8%	25.0%	-28.6%
M.S. in Educational Tech.	80	8.0%	61	5.5%	79	6.9%	101	8.2%	66	5.1%	-17.5%	-34.7%
M.S. in Nursing	--	--	--	--	4	0.3%	10	0.8%	10	0.8%	N/A	0.0%
<b>Sub-Total: Graduate</b>	<b>98</b>	<b>9.7%</b>	<b>96</b>	<b>8.7%</b>	<b>106</b>	<b>9.2%</b>	<b>136</b>	<b>11.0%</b>	<b>96</b>	<b>7.4%</b>	<b>-2.0%</b>	<b>-29.4%</b>
<b>Total</b>	<b>1,006</b>		<b>1,106</b>		<b>1,152</b>		<b>1,239</b>		<b>1,303</b>		<b>29.5%</b>	<b>5.2%</b>

[1] Fine Arts is no longer offered as a major.

[2] Economics, and History, are no longer offered in the S.S.H.S..

**DEGREES AWARDED BY MAJOR (WITH GRADUATE PROGRAMS), 2002-03 TO 2006-07**

Major/Program	2002-03		2003-04		2004-05		2005-06		2006-07		Percent	Percent
	No.	Pct.	No.	Pct.	No.	Pct.	No.	Pct.	No.	Pct.	Chg. 02/03 to 06/07	Chg. 05/06 to 06/07
Accounting	39	3.9%	35	3.2%	41	3.6%	73	5.9%	74	5.7%	89.7%	1.4%
American Studies	8	0.8%	7	0.6%	3	0.3%	5	0.4%	11	0.8%	37.5%	120.0%
Biochemistry	4	0.4%	4	0.4%	3	0.3%	3	0.2%	6	0.5%	50.0%	100.0%
Bioinformatics	--	--	1	0.1%	2	0.2%	1	0.1%	4	0.3%	N/A	300.0%
Biology	18	1.8%	26	2.4%	25	2.2%	40	3.2%	60	4.6%	233.3%	50.0%
Business Administration	128	12.7%	159	14.4%	136	11.8%	141	11.4%	165	12.7%	28.9%	17.0%
Chemistry	4	0.4%	2	0.2%	4	0.3%	2	0.2%	5	0.4%	25.0%	150.0%
Communication Arts	143	14.2%	146	13.2%	165	14.3%	171	13.8%	139	10.7%	143.0%	-18.7%
Computer Science	14	1.4%	15	1.4%	25	2.2%	17	1.4%	18	1.4%	28.6%	5.9%
Contemporary Arts	10	1.0%	20	1.8%	18	1.6%	21	1.7%	35	2.7%	250.0%	66.7%
Economics[1]	18	1.8%	16	1.4%	10	0.9%	10	0.8%	20	1.5%	11.1%	100.0%
Environmental Science	7	0.7%	3	0.3%	2	0.2%	5	0.4%	4	0.3%	-42.9%	-20.0%
Environmental Studies[2]	12	1.2%	21	1.9%	19	1.6%	13	1.0%	17	1.3%	41.7%	30.8%
Fine Arts[3]	10	1.0%	3	0.3%	7	0.6%	1	0.1%	--	0.0%	-100.0%	-100.0%
History[4]	29	2.9%	36	3.3%	29	2.5%	37	3.0%	52	4.0%	79.3%	40.5%
Information Systems	52	5.2%	48	4.3%	41	3.6%	38	3.1%	17	1.3%	-67.3%	-55.3%
Integrated Science	--	--	--	--	1	0.1%	0	0.0%	3	0.2%	N/A	N/A
International Business	16	1.6%	19	1.7%	26	2.3%	17	1.4%	17	1.3%	6.3%	0.0%
International Studies	9	0.9%	6	0.5%	10	0.9%	12	1.0%	12	0.9%	33.3%	0.0%
Law and Society[4]	15	1.5%	35	3.2%	49	4.3%	50	4.0%	55	4.2%	266.7%	10.0%
Literature	38	3.8%	47	4.2%	70	6.1%	49	4.0%	68	5.2%	78.9%	38.8%
M. in Business Admin.	8	0.8%	26	2.4%	19	1.6%	14	1.1%	10	0.8%	25.0%	-28.6%
M.A. in Liberal Studies	10	1.0%	9	0.8%	4	0.3%	11	0.9%	10	0.8%	0.0%	-9.1%
M.S. in Ed. Technology	80	8.0%	61	5.5%	79	6.9%	101	8.2%	66	5.1%	-17.5%	-34.7%
M.S. in Nursing	--	--	--	--	4	0.3%	10	0.8%	10	0.8%	N/A	0.0%
Mathematics	8	0.8%	4	0.4%	8	0.7%	10	0.8%	17	1.3%	112.5%	70.0%
Music	7	0.7%	8	0.7%	11	1.0%	10	0.8%	20	1.5%	185.7%	100.0%
Nursing[5]	69	6.9%	62	5.6%	73	6.3%	65	5.2%	89	6.8%	29.0%	36.9%
Physics	2	0.2%	2	0.2%	1	0.1%	6	0.5%	4	0.3%	100.0%	-33.3%
Political Science[4]	18	1.8%	12	1.1%	14	1.2%	27	2.2%	25	1.9%	38.9%	-7.4%
Psychology[2]	135	13.4%	176	15.9%	157	13.6%	167	13.5%	167	12.8%	23.7%	0.0%
Social Science	18	1.8%	13	1.2%	8	0.7%	12	1.0%	14	1.1%	-22.2%	16.7%
Social Work	20	2.0%	30	2.7%	21	1.8%	30	2.4%	24	1.8%	20.0%	-20.0%
Sociology	23	2.3%	17	1.5%	12	1.0%	24	1.9%	17	1.3%	-26.1%	-29.2%
Spanish Language Studies	--	--	--	--	--	--	5	0.4%	5	0.4%	N/A	0.0%
Theater	10	1.0%	21	1.9%	19	1.6%	15	1.2%	8	0.6%	-20.0%	-46.7%
Visual Arts	24	2.4%	16	1.4%	36	3.1%	26	2.1%	35	2.7%	45.8%	34.6%
<b>Total</b>	<b>1,006</b>		<b>1,106</b>		<b>1,152</b>		<b>1,239</b>		<b>1,303</b>		<b>29.5%</b>	<b>5.2%</b>

[1] Includes students from ASB and SSHS.

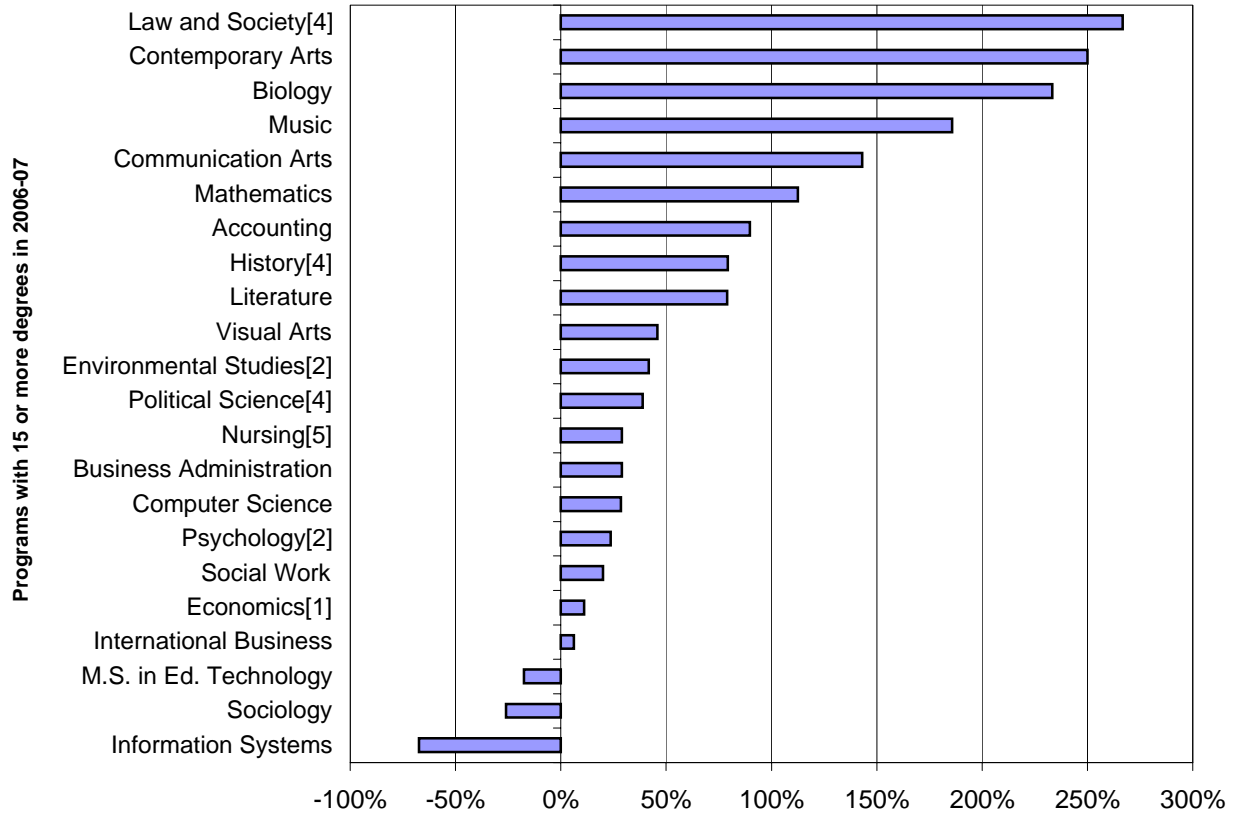
[2] Includes students from SSHS and TAS.

[3] Fine Arts is no longer offered as a major.

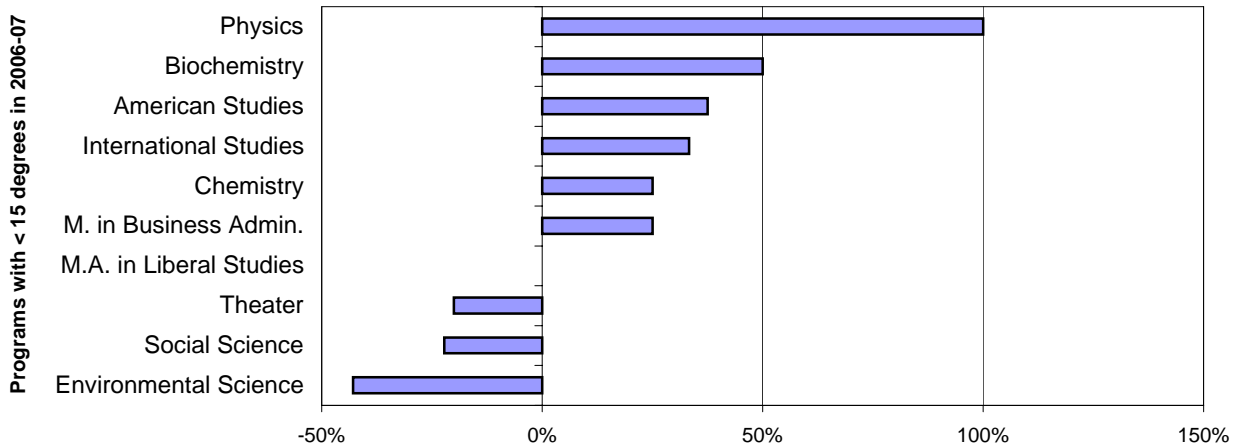
[4] Includes students from AIS and SSHS.

[5] Joint degree with UMDNJ (until AY 07-08).

**PCT CHANGE (02/03 TO 06/07) IN DEGREES AWARDED BY PRIMARY MAJOR**



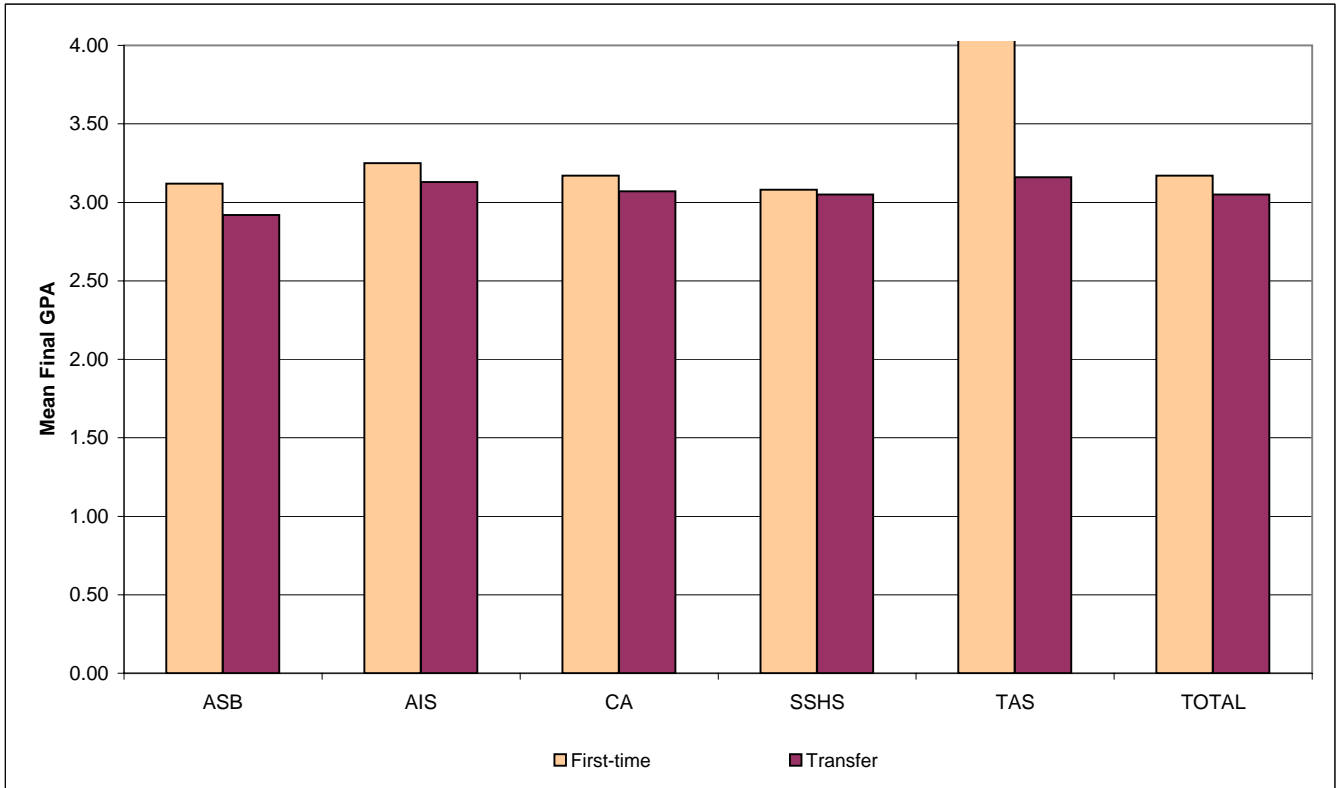
**PCT CHANGE (02/03 TO 06/07) IN DEGREES AWARDED BY PRIMARY MAJOR**



(footnotes are on page 19)

**MEAN FINAL GRADE POINT AVERAGES BY SCHOOL AND INITIAL ADMISSIONS TYPE  
2006-07 DEGREE RECIPIENTS, UNDERGRADUATE ONLY**

School	Mean Final Grade Point Average of First-time Students		Mean Final Grade Point Average of Transfer Students		Overall Mean GPA
	Number	Mean GPA	Number	Mean GPA	
Anisfield School of Business	149	3.12	144	2.92	3.03
American & Int'l. Studies	97	3.25	78	3.13	3.19
Contemporary Arts	141	3.17	96	3.07	3.13
Social Science & Human Services	154	3.08	129	3.05	3.07
Theoretical & Applied Science	119	3.27	100	3.16	3.22
Overall	660	3.17	547	3.05	3.12



**NEW UNDERGRADUATE STUDENT COHORT RETENTION RATES**

Fall of Entry	Sub-Cohorts*	Original Size	Retained One-Year		Retained Two-Years		Retained Three-Years		Retained Four-Years		Retained Five-Years		Retained Six-Years	
			#	Rate	#	Rate	#	Rate	#	Rate	#	Rate	#	Rate
1997	FTFTF	454	359	79.1%	306	67.4%	294	64.8%	162	35.7%	45	9.9%	22	4.8%
	PTFTF	17	8	47.1%	7	41.2%	4	23.5%	4	23.5%	3	17.6%	2	11.8%
	FTTR	351	269	76.6%	168	47.9%	73	20.8%	29	8.3%	12	3.4%	12	3.4%
	PTTR	208	139	66.8%	104	50.0%	69	33.2%	44	21.2%	31	14.9%	22	10.6%
	Total	1,030	775	75.2%	585	56.8%	440	42.7%	239	23.2%	91	8.8%	58	5.6%
1998	FTFTF	472	392	83.1%	353	74.8%	321	68.0%	167	35.4%	47	10.0%	22	4.7%
	PTFTF	17	12	70.6%	9	52.9%	7	41.2%	6	35.3%	4	23.5%	3	17.6%
	FTTR	351	264	75.2%	171	48.7%	77	21.9%	35	10.0%	12	3.4%	9	2.6%
	PTTR	183	120	65.6%	91	49.7%	67	36.6%	39	21.3%	29	15.8%	16	8.7%
	Total	1,023	788	77.0%	624	61.0%	472	46.1%	247	24.1%	92	9.0%	50	4.9%
1999	FTFTF	528	435	82.4%	378	71.6%	348	65.9%	146	27.7%	42	8.0%	18	3.4%
	PTFTF	8	4	50.0%	3	37.5%	2	25.0%	0	0.0%	0	0.0%	0	0.0%
	FTTR	364	274	75.3%	169	46.4%	88	24.2%	37	10.2%	15	4.1%	8	2.2%
	PTTR	152	93	61.2%	74	48.7%	53	34.9%	37	24.3%	27	17.8%	10	6.6%
	Total	1,052	806	76.6%	624	59.3%	491	46.7%	220	20.9%	84	8.0%	36	3.4%
2000	FTFTF	638	542	85.0%	490	76.8%	459	71.9%	187	29.3%	31	4.9%	15	2.4%
	PTFTF	6	4	66.7%	4	66.7%	4	66.7%	4	66.7%	2	33.3%	2	33.3%
	FTTR	369	276	74.8%	184	49.9%	75	20.3%	27	7.3%	8	2.2%	9	2.4%
	PTTR	150	84	56.0%	65	43.3%	44	29.3%	29	19.3%	19	12.7%	14	9.3%
	Total	1,163	906	77.9%	743	63.9%	582	50.0%	247	21.2%	60	5.2%	40	3.4%
2001	FTFTF	628	525	83.6%	468	74.5%	446	71.0%	140	22.3%	20	3.2%	7	1.1%
	PTFTF	5	2	40.0%	2	40.0%	2	40.0%	2	40.0%	1	20.0%	0	0.0%
	FTTR	364	291	79.9%	190	52.2%	70	19.2%	26	7.1%	15	4.1%	9	2.5%
	PTTR	141	92	65.2%	73	51.8%	42	29.8%	30	21.3%	14	9.9%	10	7.1%
	Total	1,138	910	80.0%	733	64.4%	560	49.2%	198	17.4%	50	4.4%	26	2.3%
2002	FTFTF	684	595	87.0%	536	78.4%	512	74.9%	146	21.3%	34	5.0%	-	-
	PTFTF	3	1	33.3%	1	33.3%	1	33.3%	1	33.3%	1	33.3%	-	-
	FTTR	433	338	78.1%	221	51.0%	85	19.6%	23	5.3%	0	0.0%	-	-
	PTTR	135	85	63.0%	59	43.7%	36	26.7%	21	15.6%	10	7.4%	-	-
	Total	1,255	1,019	81.2%	817	65.1%	634	50.5%	191	15.2%	45	3.6%	-	-
2003	FTFTF	725	646	89.1%	578	79.7%	562	77.5%	128	17.7%	-	-	-	-
	PTFTF	0	-	N/A	-	N/A	-	N/A	-	N/A	-	-	-	-
	FTTR	378	315	83.3%	209	55.3%	85	22.5%	20	5.3%	-	-	-	-
	PTTR	120	63	52.5%	45	37.5%	21	17.5%	14	11.7%	-	-	-	-
	Total	1,223	1,024	83.7%	832	68.0%	668	54.6%	162	13.2%	-	-	-	-
2004	FTFTF	755	674	89.3%	616	81.6%	579	76.7%	-	-	-	-	-	-
	PTFTF	0	-	N/A	-	N/A	-	N/A	-	-	-	-	-	-
	FTTR	398	346	86.9%	213	53.5%	80	20.1%	-	-	-	-	-	-
	PTTR	93	63	67.7%	39	41.9%	23	24.7%	-	-	-	-	-	-
	Total	1,246	1,083	86.9%	868	69.7%	682	54.7%	-	-	-	-	-	-
2005	FTFTF	748	655	87.6%	590	78.9%	-	-	-	-	-	-	-	-
	PTFTF	0	0	N/A	-	N/A	-	-	-	-	-	-	-	-
	FTTR	396	316	79.8%	197	49.7%	-	-	-	-	-	-	-	-
	PTTR	76	44	57.9%	37	48.7%	-	-	-	-	-	-	-	-
	Total	1,220	1,015	83.2%	824	67.5%	-	-	-	-	-	-	-	-
2006	FTFTF	813	731	89.9%	-	-	-	-	-	-	-	-	-	-
	PTFTF	1	1	100.0%	-	-	-	-	-	-	-	-	-	-
	FTTR	540	454	84.1%	-	-	-	-	-	-	-	-	-	-
	PTTR	70	41	58.6%	-	-	-	-	-	-	-	-	-	-
	Total	1,424	1,227	86.2%	-	-	-	-	-	-	-	-	-	-

\* FTFTF=full-time, first-time freshmen; PTFTF=part-time, first-time freshmen; FTTR=full-time transfers; and PTTR=part-time transfers.

**SIX-YEAR RETENTION BY ETHNICITY FULL-TIME, FIRST-TIME FRESHMEN**

Fall of Entry	Sub-Cohorts	Original Size	Retained One-Year		Retained Two-Years		Retained Three-Years		Retained Four-Years		Retained Five-Years		Retained Six-Years	
			#	Rate	#	Rate	#	Rate	#	Rate	#	Rate	#	Rate
1997	Amer. I/Nat.AI.	1	1	100.0%	1	100.0%	1	100.0%	1	100.0%	1	100.0%	0	0.0%
	Asian/Pac Is.	30	25	83.3%	22	73.3%	19	63.3%	9	30.0%	0	0.0%	0	0.0%
	Black, Non-Hisp.	51	41	80.4%	35	68.6%	32	62.7%	21	41.2%	6	11.8%	2	3.9%
	Hispanic	33	30	90.9%	26	78.8%	25	75.8%	16	48.5%	6	18.2%	4	12.1%
	White, non Hisp.	339	262	77.3%	222	65.5%	217	64.0%	115	33.9%	32	9.4%	16	4.7%
Total	454	359	79.1%	306	67.4%	294	64.8%	162	35.7%	45	9.9%	22	4.8%	
1998	Amer. I/Nat.AI.	2	2	100.0%	2	100.0%	2	100.0%	1	50.0%	0	0.0%	1	50.0%
	Asian/Pac Is.	27	23	85.2%	22	81.5%	20	74.1%	9	33.3%	2	7.4%	1	3.7%
	Black, Non-Hisp.	30	26	86.7%	21	70.0%	19	63.3%	8	26.7%	4	13.3%	1	3.3%
	Hispanic	63	51	81.0%	44	69.8%	40	63.5%	27	42.9%	5	7.9%	0	0.0%
	White, non Hisp.	350	290	82.9%	264	75.4%	240	68.6%	122	34.9%	36	10.3%	19	5.4%
Total	472	392	83.1%	353	74.8%	321	68.0%	167	35.4%	47	10.0%	22	4.7%	
1999	Amer. I/Nat.AI.	0	0	0.0%	0	0.0%	0	0.0%	0	0.0%	0	0.0%	0	0.0%
	Asian/Pac Is.	26	23	88.5%	22	84.6%	19	73.1%	9	34.6%	2	7.7%	1	3.8%
	Black, Non-Hisp.	56	47	83.9%	40	71.4%	37	66.1%	14	25.0%	5	8.9%	3	5.4%
	Hispanic	50	42	84.0%	32	64.0%	30	60.0%	17	34.0%	4	8.0%	0	0.0%
	White, non Hisp.	396	323	81.6%	284	71.7%	262	66.2%	106	26.8%	31	7.8%	14	3.5%
Total	528	435	82.4%	378	71.6%	348	65.9%	146	27.7%	42	8.0%	18	3.4%	
2000	Amer. I/Nat.AI.	2	2	100.0%	2	100.0%	2	100.0%	6	0.0%	1	0.0%	0	0.0%
	Asian/Pac Is.	31	25	80.6%	23	74.2%	17	54.8%	14	45.2%	5	16.1%	2	6.5%
	Black, Non-Hisp.	49	41	83.7%	38	77.6%	31	63.3%	2	4.1%	2	4.1%	1	2.0%
	Hispanic	53	45	84.9%	40	75.5%	34	64.2%	20	37.7%	4	7.5%	2	3.8%
	White, non Hisp.	503	429	85.3%	387	76.9%	375	74.6%	145	28.8%	19	3.8%	10	2.0%
Total	638	542	85.0%	490	76.8%	459	71.9%	187	29.3%	31	4.9%	15	2.4%	
2001	Amer. I/Nat.AI.	0	0	0.0%	0	0.0%	0	0.0%	0	0.0%	0	0.0%	0	0.0%
	Asian/Pac Is.	35	32	91.4%	27	77.1%	23	65.7%	4	11.4%	2	5.7%	0	0.0%
	Black, Non-Hisp.	44	35	79.5%	31	70.5%	32	72.7%	12	27.3%	2	4.5%	2	4.5%
	Hispanic	58	51	87.9%	46	79.3%	42	72.4%	17	29.3%	2	3.4%	0	0.0%
	White, non Hisp.	491	407	82.9%	364	74.1%	349	71.1%	107	21.8%	14	2.9%	5	1.0%
Total	628	525	83.6%	468	74.5%	446	71.0%	140	22.3%	20	3.2%	7	1.1%	
2002	Amer. I/Nat.AI.	3	3	100.0%	1	0.0%	1	0.0%	0	0.0%	0	0.0%	-	-
	Asian/Pac Is.	23	20	87.0%	17	73.9%	14	60.9%	3	13.0%	1	4.3%	-	-
	Black, Non-Hisp.	58	51	87.9%	48	82.8%	47	81.0%	17	29.3%	7	12.1%	-	-
	Hispanic	69	56	81.2%	47	68.1%	42	60.9%	15	21.7%	2	2.9%	-	-
	White, non Hisp.	531	465	87.6%	423	79.7%	408	76.8%	111	20.9%	24	4.5%	-	-
Total	684	595	87.0%	536	78.4%	512	74.9%	146	21.3%	34	5.0%	-	-	
2003	Amer. I/Nat.AI.	3	3	100.0%	3	0.0%	3	0.0%	1	0.0%	-	-	-	-
	Asian/Pac Is.	25	24	96.0%	20	80.0%	19	76.0%	3	12.0%	-	-	-	-
	Black, Non-Hisp.	53	47	88.7%	42	79.2%	40	75.5%	10	18.9%	-	-	-	-
	Hispanic	58	50	86.2%	41	70.7%	40	69.0%	10	17.2%	-	-	-	-
	White, non Hisp.	586	522	89.1%	472	80.5%	460	78.5%	104	17.7%	-	-	-	-
Total	725	646	89.1%	578	79.7%	562	77.5%	128	17.7%	-	-	-	-	
2004	Amer. I/Nat.AI.	1	0	0.0%	0	0.0%	0	0.0%	-	-	-	-	-	-
	Asian/Pac Is.	40	37	92.5%	28	70.0%	26	65.0%	-	-	-	-	-	-
	Black, Non-Hisp.	48	42	87.5%	33	68.8%	31	64.6%	-	-	-	-	-	-
	Hispanic	64	58	90.6%	51	79.7%	46	71.9%	-	-	-	-	-	-
	White, non Hisp.	602	537	89.2%	504	83.7%	476	79.1%	-	-	-	-	-	-
Total	755	674	89.3%	616	81.6%	579	76.7%	-	-	-	-	-	-	
2005	Amer. I/Nat.AI.	2	2	100.0%	2	0.0%	-	-	-	-	-	-	-	-
	Asian/Pac Is.	32	28	87.5%	25	78.1%	-	-	-	-	-	-	-	-
	Black, Non-Hisp.	67	56	83.6%	40	59.7%	-	-	-	-	-	-	-	-
	Hispanic	67	58	86.6%	49	73.1%	-	-	-	-	-	-	-	-
	White, non Hisp.	580	511	88.1%	474	81.7%	-	-	-	-	-	-	-	-
Total	748	655	87.6%	590	78.9%	-	-	-	-	-	-	-	-	
2006	Amer. I/Nat.AI.	4	4	100.0%	-	-	-	-	-	-	-	-	-	-
	Asian/Pac Is.	35	30	85.7%	-	-	-	-	-	-	-	-	-	-
	Black, Non-Hisp.	71	59	83.1%	-	-	-	-	-	-	-	-	-	-
	Hispanic	91	83	91.2%	-	-	-	-	-	-	-	-	-	-
	White, non Hisp.	613	556	90.7%	-	-	-	-	-	-	-	-	-	-
Total	814	732	89.9%	-	-	-	-	-	-	-	-	-	-	



**SIX-YEAR RETENTION BY ADMIT TYPE FOR FULL-TIME, FIRST-TIME FRESHMEN**

Fall of Entry	Sub-Cohorts	Original Size	Retained One-Year		Retained Two-Years		Retained Three-Years		Retained Four-Years		Retained Five-Years		Retained Six-Years	
			#	Rate	#	Rate	#	Rate	#	Rate	#	Rate	#	Rate
1997	Regular	340	262	77.1%	220	64.7%	212	62.4%	100	29.4%	31	9.1%	15	4.4%
	EOF	67	60	89.6%	52	77.6%	52	77.6%	35	52.2%	9	13.4%	4	6.0%
	Special	47	37	78.7%	34	72.3%	30	63.8%	27	57.4%	5	10.6%	3	6.4%
	Total	454	359	79.1%	306	67.4%	294	64.8%	162	35.7%	45	9.9%	22	4.8%
1998	Regular	352	295	83.8%	271	77.0%	246	69.9%	124	35.2%	35	9.9%	17	4.8%
	EOF	69	57	82.6%	46	66.7%	42	60.9%	23	33.3%	7	10.1%	1	1.4%
	Special	51	40	78.4%	36	70.6%	33	64.7%	20	39.2%	5	9.8%	4	7.8%
	Total	472	392	83.1%	353	74.8%	321	68.0%	167	35.4%	47	10.0%	22	4.7%
1999	Regular	414	330	79.7%	292	70.5%	270	65.2%	104	25.1%	30	7.2%	13	3.1%
	EOF	60	56	93.3%	44	73.3%	41	68.3%	21	35.0%	8	13.3%	4	6.7%
	Special	54	49	90.7%	42	77.8%	37	68.5%	21	38.9%	4	7.4%	1	1.9%
	Total	528	435	82.4%	378	71.6%	348	65.9%	146	27.7%	42	8.0%	18	3.4%
2000	Regular	511	439	85.9%	399	78.1%	380	74.4%	144	28.2%	21	4.1%	13	2.5%
	EOF	64	55	85.9%	50	78.1%	41	64.1%	23	35.9%	3	4.7%	2	3.1%
	Special	63	48	76.2%	41	65.1%	38	60.3%	20	31.7%	7	11.1%	-	0.0%
	Total	638	542	85.0%	490	76.8%	459	71.9%	187	29.3%	31	4.9%	15	2.4%
2001	Regular	497	414	83.3%	370	74.4%	353	71.0%	101	20.3%	16	3.2%	4	0.8%
	EOF	69	60	87.0%	54	78.3%	52	75.4%	24	34.8%	3	4.3%	3	4.3%
	Special	62	51	82.3%	44	71.0%	41	66.1%	15	24.2%	1	1.6%	0	0.0%
	Total	628	525	83.6%	468	74.5%	446	71.0%	140	22.3%	20	3.2%	7	1.1%
2002	Regular	543	485	89.3%	439	80.8%	423	77.9%	111	20.4%	23	4.2%	-	-
	EOF	73	60	82.2%	51	69.9%	46	63.0%	21	28.8%	6	8.2%	-	-
	Special	68	50	73.5%	46	67.6%	43	63.2%	14	20.6%	5	7.4%	-	-
	Total	684	595	87.0%	536	78.4%	512	74.9%	146	21.3%	34	5.0%	-	-
2003	Regular	582	524	90.0%	472	81.1%	460	79.0%	94	16.2%	-	-	-	-
	EOF	70	61	87.1%	47	67.1%	46	65.7%	14	20.0%	-	-	-	-
	Special	73	61	83.6%	59	80.8%	56	76.7%	20	27.4%	-	-	-	-
	Total	725	646	89.1%	578	79.7%	562	77.5%	128	17.7%	-	-	-	-
2004	Regular	610	549	90.0%	509	83.4%	479	78.5%	-	-	-	-	-	-
	EOF	69	63	91.3%	50	72.5%	46	66.7%	-	-	-	-	-	-
	Special	76	62	81.6%	57	75.0%	54	71.1%	-	-	-	-	-	-
	Total	755	674	89.3%	616	81.6%	579	76.7%	-	-	-	-	-	-
2005	Regular	602	530	88.0%	488	81.1%	-	-	-	-	-	-	-	-
	EOF	71	63	88.7%	47	66.2%	-	-	-	-	-	-	-	-
	Special	75	62	82.7%	55	73.3%	-	-	-	-	-	-	-	-
	Total	748	655	87.6%	590	78.9%	-	-	-	-	-	-	-	-
2006	Regular	649	587	90.4%	-	-	-	-	-	-	-	-	-	-
	EOF	85	80	94.1%	-	-	-	-	-	-	-	-	-	-
	Special	80	65	81.3%	-	-	-	-	-	-	-	-	-	-
	Total	814	732	89.9%	-	-	-	-	-	-	-	-	-	-

**NEW UNDERGRADUATE STUDENT COHORT CUMULATIVE GRADUATION RATES**

Fall of Entry	Sub-Cohorts*	Original Size	One-Year Cumulative Graduation		Two-Year Cumulative Graduation		Three-Year Cumulative Graduation		Four-Year Cumulative Graduation		Five-Year Cumulative Graduation		Six-Year Cumulative Graduation	
			#	Rate	#	Rate	#	Rate	#	Rate	#	Rate	#	Rate
1996	FTFTF	413	0	0.0%	0	0.0%	4	1.0%	102	24.7%	205	49.6%	224	54.2%
	PTFTF	17	0	0.0%	0	0.0%	0	0.0%	0	0.0%	1	5.9%	1	5.9%
	FTTR	339	1	0.3%	56	16.5%	129	38.1%	176	51.9%	191	56.3%	194	57.2%
	PTTR	210	0	0.0%	8	3.8%	32	15.2%	55	26.2%	65	31.0%	72	34.3%
	Total	979	1	0.1%	64	6.5%	165	16.9%	333	34.0%	462	47.2%	491	50.2%
1997	FTFTF	454	0	0.0%	0	0.0%	1	0.2%	131	28.9%	222	48.9%	244	53.7%
	PTFTF	17	0	0.0%	0	0.0%	0	0.0%	0	0.0%	1	5.9%	1	5.9%
	FTTR	351	2	0.6%	69	19.7%	154	43.9%	195	55.6%	212	60.4%	217	61.8%
	PTTR	208	0	0.0%	6	2.9%	22	10.6%	44	21.2%	55	26.4%	67	32.2%
	Total	1,030	2	0.2%	75	7.3%	177	17.2%	370	35.9%	490	47.6%	529	51.4%
1998	FTFTF	472	0	0.0%	0	0.0%	6	1.3%	170	36.0%	267	56.6%	294	62.3%
	PTFTF	17	0	0.0%	0	0.0%	0	0.0%	1	5.9%	3	17.6%	4	23.5%
	FTTR	351	1	0.3%	70	19.9%	143	40.7%	183	52.1%	200	57.0%	207	59.0%
	PTTR	183	0	0.0%	7	3.8%	25	13.7%	48	26.2%	57	31.1%	64	35.0%
	Total	1,023	1	0.1%	77	7.5%	174	17.0%	402	39.3%	527	51.5%	569	55.6%
1999	FTFTF	528	0	0.0%	1	0.2%	7	1.3%	203	38.4%	288	54.5%	311	59.4%
	PTFTF	8	0	0.0%	0	0.0%	0	0.0%	0	0.0%	0	0.0%	0	0.0%
	FTTR	364	2	0.5%	81	22.3%	159	43.7%	204	56.0%	219	60.2%	225	61.8%
	PTTR	152	0	0.0%	5	3.3%	14	9.2%	32	21.1%	38	25.0%	53	34.9%
	Total	1,052	2	0.2%	87	8.3%	180	17.1%	439	41.7%	545	51.8%	589	56.0%
2000	FTFTF	638	0	0.0%	2	0.3%	10	1.6%	284	44.5%	402	63.0%	419	65.7%
	PTFTF	6	0	0.0%	0	0.0%	0	0.0%	1	16.7%	1	16.7%	1	16.7%
	FTTR	369	3	0.8%	75	20.3%	172	46.6%	216	58.5%	232	62.9%	233	63.1%
	PTTR	150	0	0.0%	4	2.7%	23	15.3%	40	26.7%	50	33.3%	51	34.0%
	Total	1,163	3	0.3%	81	7.0%	205	17.6%	541	46.5%	685	58.9%	704	60.5%
2001	FTFTF	628	0	0.0%	0	0.0%	7	1.1%	304	48.4%	393	62.6%	407	64.8%
	PTFTF	5	0	0.0%	0	0.0%	0	0.0%	0	0.0%	1	20.0%	3	60.0%
	FTTR	364	0	0.0%	78	21.4%	183	50.3%	225	61.8%	236	64.8%	240	65.9%
	PTTR	141	0	0.0%	3	2.1%	21	14.9%	34	24.1%	45	31.9%	54	38.3%
	Total	1,138	0	0.0%	81	7.1%	211	18.5%	563	49.5%	675	59.3%	704	61.9%
2002	FTFTF	684	0	0.0%	0	0.0%	5	0.7%	330	48.2%	459	67.1%	-	-
	PTFTF	3	0	0.0%	0	0.0%	0	0.0%	0	0.0%	0	0.0%	-	-
	FTTR	433	3	0.7%	101	23.3%	221	51.0%	272	62.8%	288	66.5%	-	-
	PTTR	135	0	0.0%	6	4.4%	25	18.5%	36	26.7%	46	34.1%	-	-
	Total	1,255	3	0.2%	107	8.5%	251	20.0%	638	50.8%	793	63.2%	-	-
2003	FTFTF	725	0	0.0%	0	0.0%	4	0.6%	428	59.0%	-	-	-	-
	PTFTF	0	0	N/A	0	N/A	0	N/A	0	N/A	-	-	-	-
	FTTR	378	2	0.5%	84	22.2%	190	50.3%	265	70.1%	-	-	-	-
	PTTR	120	0	0.0%	7	5.8%	22	18.3%	32	26.7%	-	-	-	-
	Total	1,223	2	0.2%	91	7.4%	216	17.7%	725	59.3%	-	-	-	-
2004	FTFTF	755	0	0.0%	0	0.0%	7	0.9%	-	-	-	-	-	-
	PTFTF	0	0	N/A	0	N/A	0	N/A	-	-	-	-	-	-
	FTTR	398	2	0.5%	90	22.6%	236	59.3%	-	-	-	-	-	-
	PTTR	93	0	0.0%	6	6.5%	20	21.5%	-	-	-	-	-	-
	Total	1,246	2	0.2%	96	7.7%	263	21.1%	-	-	-	-	-	-
2005	FTFTF	748	0	0.0%	2	0.3%	-	-	-	-	-	-	-	-
	PTFTF	0	0	N/A	0	N/A	-	-	-	-	-	-	-	-
	FTTR	396	3	0.8%	92	23.2%	-	-	-	-	-	-	-	-
	PTTR	76	0	0.0%	4	5.3%	-	-	-	-	-	-	-	-
	Total	1,220	3	0.2%	98	8.0%	-	-	-	-	-	-	-	-
2006	FTFTF	813	0	0.0%	-	-	-	-	-	-	-	-	-	-
	PTFTF	1	0	N/A	-	-	-	-	-	-	-	-	-	-
	FTTR	540	1	0.2%	-	-	-	-	-	-	-	-	-	-
	PTTR	70	0	0.0%	-	-	-	-	-	-	-	-	-	-
	Total	1,424	1	0.1%	-	-	-	-	-	-	-	-	-	-

FULL-TIME, FIRST-TIME FRESHMEN COHORT CUMULATIVE GRADUATION RATES

Fall of Entry	Sub-Cohorts	Original Size	One-Year		Two-Year		Three-Year		Four-Year		Five-Year		Six-Year	
			Cumulative Graduation		Cumulative Graduation		Cumulative Graduation		Cumulative Graduation		Cumulative Graduation		Cumulative Graduation	
1997	Amer. I/Nat.AI.	1	0	0.0%	0	0.0%	0	0.0%	0	0.0%	0	0.0%	0	0.0%
	Asian/Pac Is.	30	0	0.0%	0	0.0%	0	0.0%	10	33.3%	17	56.7%	17	56.7%
	Black, Non-His	51	0	0.0%	0	0.0%	0	0.0%	10	19.6%	19	37.3%	23	45.1%
	Hispanic	33	0	0.0%	0	0.0%	0	0.0%	5	15.2%	13	39.4%	15	45.5%
	White, non His	339	0	0.0%	0	0.0%	1	0.3%	106	31.3%	173	51.0%	189	55.8%
	Total	454	0	0.0%	0	0.0%	1	0.2%	131	28.9%	222	48.9%	244	53.7%
1998	Amer. I/Nat.AI.	2	0	0.0%	0	0.0%	0	0.0%	0	0.0%	1	50.0%	1	50.0%
	Asian/Pac Is.	27	0	0.0%	0	0.0%	1	3.7%	12	44.4%	18	66.7%	19	70.4%
	Black, Non-His	30	0	0.0%	0	0.0%	0	0.0%	8	26.7%	14	46.7%	16	53.3%
	Hispanic	63	0	0.0%	0	0.0%	0	0.0%	17	27.0%	35	55.6%	40	63.5%
	White, non His	350	0	0.0%	0	0.0%	5	1.4%	133	38.0%	199	56.9%	218	62.3%
	Total	472	0	0.0%	0	0.0%	6	1.3%	170	36.0%	267	56.6%	294	62.3%
1999	Amer. I/Nat.AI.	0	0	0.0%	0	0.0%	0	0.0%	0	0.0%	0	0.0%	0	0.0%
	Asian/Pac Is.	26	0	0.0%	0	0.0%	0	0.0%	10	38.5%	16	61.5%	18	69.2%
	Black, Non-His	56	0	0.0%	0	0.0%	0	0.0%	18	32.1%	25	44.6%	26	46.4%
	Hispanic	50	0	0.0%	0	0.0%	0	0.0%	13	26.0%	22	44.0%	25	50.0%
	White, non His	396	0	0.0%	1	0.3%	7	1.8%	162	40.9%	225	56.8%	242	61.1%
	Total	528	0	0.0%	1	0.2%	7	1.3%	203	38.4%	288	54.5%	311	59.4%
2000	Amer. I/Nat.AI.	2	0	0.0%	0	0.0%	0	0.0%	0	0.0%	0	0.0%	1	50.0%
	Asian/Pac Is.	31	0	0.0%	2	6.5%	4	12.9%	13	41.9%	17	54.8%	18	58.1%
	Black, Non-His	49	0	0.0%	0	0.0%	2	4.1%	18	36.7%	26	53.1%	27	55.1%
	Hispanic	53	0	0.0%	0	0.0%	1	1.9%	15	28.3%	25	47.2%	28	52.8%
	White, non His	503	0	0.0%	0	0.0%	3	0.6%	238	47.3%	334	66.4%	345	68.6%
	Total	638	0	0.0%	2	0.3%	10	1.6%	284	44.5%	402	63.0%	419	65.7%
2001	Amer. I/Nat.AI.	0	0	0.0%	0	0.0%	0	0.0%	0	0.0%	0	0.0%	0	0.0%
	Asian/Pac Is.	35	0	0.0%	0	0.0%	1	2.9%	16	45.7%	21	60.0%	21	60.0%
	Black, Non-His	44	0	0.0%	0	0.0%	0	0.0%	14	31.8%	23	52.3%	25	56.8%
	Hispanic	58	0	0.0%	0	0.0%	1	1.7%	22	37.9%	29	50.0%	32	55.2%
	White, non His	491	0	0.0%	0	0.0%	5	1.0%	252	51.3%	320	65.2%	329	67.0%
	Total	628	0	0.0%	0	0.0%	7	1.1%	304	48.4%	393	62.6%	407	64.8%
2002	Amer. I/Nat.AI.	3	0	0.0%	0	0.0%	0	0.0%	1	33.3%	1	33.3%	-	-
	Asian/Pac Is.	23	0	0.0%	0	0.0%	1	4.3%	8	34.8%	12	52.2%	-	-
	Black, Non-His	58	0	0.0%	0	0.0%	0	0.0%	26	44.8%	38	65.5%	-	-
	Hispanic	69	0	0.0%	0	0.0%	0	0.0%	18	26.1%	37	53.6%	-	-
	White, non His	531	0	0.0%	0	0.0%	4	0.8%	277	52.2%	371	69.9%	-	-
	Total	684	0	0.0%	0	0.0%	5	0.7%	330	48.2%	459	67.1%	-	-
2003	Amer. I/Nat.AI.	3	0	0.0%	0	0.0%	0	0.0%	3	100.0%	-	-	-	-
	Asian/Pac Is.	25	0	0.0%	0	0.0%	0	0.0%	15	60.0%	-	-	-	-
	Black, Non-His	53	0	0.0%	0	0.0%	0	0.0%	22	41.5%	-	-	-	-
	Hispanic	58	0	0.0%	0	0.0%	1	1.7%	26	44.8%	-	-	-	-
	White, non His	586	0	0.0%	0	0.0%	3	0.5%	362	61.8%	-	-	-	-
	Total	725	0	0.0%	0	0.0%	4	0.6%	428	59.0%	-	-	-	-
2004	Amer. I/Nat.AI.	1	0	0.0%	0	0.0%	0	0.0%	-	-	-	-	-	-
	Asian/Pac Is.	40	0	0.0%	0	0.0%	1	2.5%	-	-	-	-	-	-
	Black, Non-His	48	0	0.0%	0	0.0%	0	0.0%	-	-	-	-	-	-
	Hispanic	64	0	0.0%	0	0.0%	0	0.0%	-	-	-	-	-	-
	White, non His	602	0	0.0%	0	0.0%	6	1.0%	-	-	-	-	-	-
	Total	755	0	0.0%	0	0.0%	7	0.9%	-	-	-	-	-	-
2005	Amer. I/Nat.AI.	2	0	0.0%	0	0.0%	-	-	-	-	-	-	-	-
	Asian/Pac Is.	32	0	0.0%	0	0.0%	-	-	-	-	-	-	-	-
	Black, Non-His	67	0	0.0%	0	0.0%	-	-	-	-	-	-	-	-
	Hispanic	67	0	0.0%	0	0.0%	-	-	-	-	-	-	-	-
	White, non His	580	0	0.0%	2	0.3%	-	-	-	-	-	-	-	-
	Total	748	0	0.0%	2	0.3%	-	-	-	-	-	-	-	-

**TEN-YEAR CUMULATIVE GRADUATION RATES BY ADMIT TYPE FOR FULL-TIME, FIRST-TIME FRESHMEN**

Fall of Entry	Sub-Cohorts	Original Size	Four-Year Cumulative Graduation [1]		Five-Year Cumulative Graduation		Six-Year Cumulative Graduation		Seven-Year Cumulative Graduation		Eight-Year Cumulative Graduation		Nine-Year Cumulative Graduation		Ten-Year Cumulative Graduation	
			#	Rate	#	Rate	#	Rate	#	Rate	#	Rate	#	Rate	#	Rate
1991	Regular	298	57	19.1%	119	39.9%	131	44.0%	135	45.3%	135	45.3%	137	46.0%	137	46.0%
	EOF	85	3	3.5%	11	12.9%	14	16.5%	17	20.0%	17	20.0%	18	21.2%	18	21.2%
	Special	42	9	21.4%	13	31.0%	16	38.1%	18	42.9%	18	42.9%	18	42.9%	19	45.2%
	Total	425	69	16.2%	143	33.6%	161	37.9%	170	40.0%	170	40.0%	173	40.7%	174	40.9%
1992	Regular	279	71	25.4%	126	45.2%	136	48.7%	139	49.8%	142	50.9%	142	50.9%	142	50.9%
	EOF	98	2	2.0%	16	16.3%	21	21.4%	22	22.4%	22	22.4%	22	22.4%	22	22.4%
	Special	42	4	9.5%	10	23.8%	15	35.7%	16	38.1%	16	38.1%	16	38.1%	16	38.1%
	Total	419	77	18.4%	152	36.3%	172	41.1%	177	42.2%	180	43.0%	180	43.0%	180	43.0%
1993	Regular	240	58	24.2%	105	43.8%	111	46.3%	113	47.1%	113	47.1%	113	47.1%	113	47.1%
	EOF	83	1	1.2%	8	9.6%	13	15.7%	15	18.1%	16	19.3%	16	19.3%	16	19.3%
	Special	39	3	7.7%	14	35.9%	17	43.6%	17	43.6%	17	43.6%	17	43.6%	19	48.7%
	Total	362	62	17.1%	127	35.1%	141	39.0%	145	40.1%	146	40.3%	146	40.3%	148	40.9%
1994	Regular	217	60	27.6%	100	46.1%	111	51.2%	115	53.0%	115	53.0%	117	53.9%	117	53.9%
	EOF	90	6	6.7%	23	25.6%	25	27.8%	26	28.9%	26	28.9%	26	28.9%	26	28.9%
	Special	36	7	19.4%	17	47.2%	19	52.8%	20	55.6%	20	55.6%	20	55.6%	20	55.6%
	Total	343	73	21.3%	140	40.8%	155	45.2%	161	46.9%	161	46.9%	163	47.5%	163	47.5%
1995	Regular	183	52	28.4%	95	51.9%	98	53.6%	99	54.1%	100	54.6%	101	55.2%	101	55.2%
	EOF	97	4	4.1%	17	17.5%	27	27.8%	30	30.9%	32	33.0%	33	34.0%	33	34.0%
	Special	39	11	28.2%	21	53.8%	24	61.5%	24	61.5%	24	61.5%	24	61.5%	24	61.5%
	Total	319	67	21.0%	133	41.7%	149	46.7%	153	48.0%	156	48.9%	158	49.5%	158	49.5%
1996	Regular	296	87	29.4%	155	52.4%	169	57.1%	172	58.1%	173	58.4%	174	58.8%	174	58.8%
	EOF	74	9	12.2%	27	36.5%	32	43.2%	33	44.6%	34	45.9%	34	45.9%	34	45.9%
	Special	43	6	14.0%	23	53.5%	23	53.5%	23	53.5%	23	53.5%	23	53.5%	23	53.5%
	Total	413	102	24.7%	205	49.6%	224	54.2%	228	55.2%	230	55.7%	231	55.9%	231	55.9%
1997	Regular	340	114	33.5%	172	50.6%	186	54.7%	190	55.9%	194	57.1%	196	57.6%	200	58.8%
	EOF	67	11	16.4%	29	43.3%	34	50.7%	36	53.7%	37	55.2%	38	56.7%	38	56.7%
	Special	47	6	12.8%	21	44.7%	24	51.1%	25	53.2%	25	53.2%	26	55.3%	26	55.3%
	Total	454	131	28.9%	222	48.9%	244	53.7%	251	55.3%	256	56.4%	260	57.3%	264	58.1%
1998	Regular	352	122	34.7%	211	59.9%	231	65.6%	236	67.0%	236	67.0%	244	69.3%	-	-
	EOF	69	15	21.7%	33	47.8%	37	53.6%	37	53.6%	38	55.1%	38	55.1%	-	-
	Special	51	13	25.5%	23	45.1%	26	51.0%	26	51.0%	26	51.0%	28	54.9%	-	-
	Total	472	150	31.8%	267	56.6%	294	62.3%	299	63.3%	300	63.6%	310	65.7%	-	-
1999	Regular	414	172	41.5%	235	56.8%	252	60.9%	252	60.9%	257	62.1%	-	-	-	-
	EOF	60	20	33.3%	27	45.0%	30	50.0%	31	51.7%	34	56.7%	-	-	-	-
	Special	54	11	20.4%	26	48.1%	29	53.7%	29	53.7%	29	53.7%	-	-	-	-
	Total	528	203	38.4%	288	54.5%	311	59.4%	312	59.1%	320	60.6%	-	-	-	-
2000	Regular	511	250	48.9%	341	66.7%	353	69.1%	361	70.6%	-	-	-	-	-	-
	EOF	64	16	25.0%	31	48.4%	35	54.7%	37	57.8%	-	-	-	-	-	-
	Special	63	18	28.6%	30	47.6%	31	49.2%	35	55.6%	-	-	-	-	-	-
	Total	638	284	44.5%	402	63.0%	419	66.1%	433	67.9%	-	-	-	-	-	-
2001	Regular	497	265	53.3%	329	66.2%	337	67.8%	-	-	-	-	-	-	-	-
	EOF	69	18	26.1%	30	43.5%	35	50.7%	-	-	-	-	-	-	-	-
	Special	62	21	33.9%	34	54.8%	35	56.5%	-	-	-	-	-	-	-	-
	Total	628	304	48.4%	393	62.6%	407	65.2%	-	-	-	-	-	-	-	-
2002	Regular	543	289	53.2%	392	72.2%	-	-	-	-	-	-	-	-	-	-
	EOF	73	17	23.3%	37	50.7%	-	-	-	-	-	-	-	-	-	-
	Special	68	24	35.3%	30	44.1%	-	-	-	-	-	-	-	-	-	-
	Total	684	330	48.2%	459	67.1%	-	-	-	-	-	-	-	-	-	-
2003	Regular	582	364	62.5%	-	-	-	-	-	-	-	-	-	-	-	-
	EOF	70	27	38.6%	-	-	-	-	-	-	-	-	-	-	-	-
	Special	73	37	50.7%	-	-	-	-	-	-	-	-	-	-	-	-
	Total	725	428	59.0%	-	-	-	-	-	-	-	-	-	-	-	-

[1] Includes all from cohort who are graduated in fewer than four years.

\* 1999 cohort adjusted in fall 2005 from 528 to 524