

**SECTION III:**  
**ENROLLMENT**

2007 INSTITUTIONAL PROFILE

TOTAL FALL 2007 ENROLLMENT = 5,702

**By Age**

Less than 20	1,617	28.4%
20 to 24	3,090	54.2%
25 to 29	380	6.7%
30 to 39	276	4.8%
Greater than 39	339	5.9%
Missing	0	N/A

**By Sex**

Female	3,457	60.6%
Male	2,245	39.4%

**By Ethnicity**

American Indian/Native Alaskan	16	0.3%
Asian/Pacific Islander	272	4.8%
Black, non-Hispanic	354	6.2%
Hispanic	480	8.4%
White, non-Hispanic	4,580	80.3%

**By Citizenship**

U.S. Citizen/Permanent Resident	5,547	97.3%
non-Citizen/non-Resident	155	2.7%

**By Ethnicity and Citizenship**

American Indian/Native Alaskan	16	0.3%
Asian/Pacific Islander	235	4.1%
Black, non-Hispanic	330	5.8%
Hispanic	473	8.3%
White, non-Hispanic	4,493	78.8%
Nonresident Alien	155	2.7%

**By State of Origin**

New Jersey	5,206	91.3%
New York	303	5.3%
Other U.S. State/Territory	36	0.6%
Foreign Country	155	2.7%
Missing	2	0.0%

TOTAL FALL 2007 ENROLLMENT = 5,702

	First-time Undergraduate		Transfer Undergraduate		Readmitted Undergraduate		Continuing Undergraduate		First-time/Transfer Graduate		Continuing/Readmit Graduate		All Nondegree (Undergrad/Grad)	
	Number	Percent	Number	Percent	Number	Percent	Number	Percent	Number	Percent	Number	Percent	Number	Percent
<b>By Age</b>														
< 20	889	98.6%	101	16.4%	1	1.5%	574	16.3%	0	0.0%	0	0.0%	52	14.6%
20 to 24	11	1.2%	418	67.9%	23	33.8%	2,494	70.7%	5	6.3%	12	7.8%	127	35.8%
25 to 29	1	0.1%	43	7.0%	20	29.4%	198	5.6%	14	17.7%	47	30.5%	57	16.1%
30 to 39	1	0.1%	25	4.1%	10	14.7%	139	3.9%	23	29.1%	38	24.7%	40	11.3%
> 39	0	0.0%	29	4.7%	14	20.6%	123	3.5%	37	46.8%	57	37.0%	79	22.3%
	902		616		68		3,528		79		154		355	
<b>By Sex</b>														
Female	520	57.6%	361	58.6%	32	47.1%	2,125	60.2%	63	79.7%	113	73.4%	243	68.5%
Male	382	42.4%	255	41.4%	36	52.9%	1,403	39.8%	16	20.3%	41	26.6%	112	31.5%
	902		616		68		3,528		79		154		355	
<b>By Ethnicity</b>														
Am. Ind./Nat. Al.	2	0.2%	0	0.0%	0	0.0%	13	0.4%	0	0.0%	0	0.0%	1	0.3%
Asian/Pac. Is.	44	4.9%	38	6.2%	4	5.9%	168	4.8%	3	3.8%	2	1.3%	13	3.7%
Black, non-Hisp.	67	7.4%	32	5.2%	8	11.8%	225	6.4%	5	6.3%	7	4.5%	10	2.8%
Hispanic	79	8.8%	52	8.4%	8	11.8%	309	8.8%	2	2.5%	4	2.6%	26	7.3%
White, non-Hisp.	710	78.7%	494	80.2%	48	70.6%	2,813	79.7%	69	87.3%	141	91.6%	305	85.9%
	902		616		68		3,528		79		154		355	
<b>By Citizenship</b>														
U.S. Citizen/Resident	878	97.3%	603	97.9%	64	94.1%	3,429	97.2%	76	96.2%	152	98.7%	345	97.2%
non-Citizen/non-Res.	24	2.7%	13	2.1%	4	5.9%	99	2.8%	3	3.8%	2	1.3%	10	2.8%
	902		616		68		3,528		79		154		355	
<b>By Ethnicity &amp; Citizenship</b>														
Am. Ind./Nat. Al.	2	0.2%	0	0.0%	0	0.0%	13	0.4%	0	0.0%	0	0.0%	1	0.3%
Asian/Pac. Is.	40	4.4%	33	5.4%	2	2.9%	145	4.1%	3	3.8%	2	1.3%	10	2.8%
Black, non-Hisp.	64	7.1%	31	5.0%	7	10.3%	207	5.9%	5	6.3%	7	4.5%	9	2.5%
Hispanic	77	8.5%	51	8.3%	8	11.8%	305	8.6%	2	2.5%	4	2.6%	26	7.3%
White, non-Hisp.	695	77.1%	488	79.2%	47	69.1%	2,759	78.2%	66	83.5%	139	90.3%	299	84.2%
Nonresident Alien	24	2.7%	13	2.1%	4	5.9%	99	2.8%	3	3.8%	2	1.3%	10	2.8%
	902		616		68		3,528		79		154		355	
<b>By State of Origin</b>														
New Jersey	860	95.3%	537	87.2%	57	83.8%	3,225	91.5%	74	93.7%	144	93.5%	309	87.0%
New York	12	1.3%	60	9.7%	7	10.3%	186	5.3%	2	2.5%	6	3.9%	30	8.5%
Other U.S. State/Ter.	6	0.7%	6	1.0%	0	0.0%	16	0.5%	0	0.0%	2	1.3%	6	1.7%
Foreign Country	24	2.7%	13	2.1%	4	5.9%	99	2.8%	3	3.8%	2	1.3%	10	2.8%
missing	0	0.0%	0	--	0	--	2	0.1%	0	--	0	--	0	--
	902		616		68		3,528		79		154		355	

TOTAL FALL 2007 ENROLLMENT = 5,702

**By Veteran Status**

Veteran/Dependent of Deceased Veteran	24	0.4%
Non-Veteran	5,678	99.6%

**By Disability Status**

	231	4.1%
	5,471	95.9%

**By Matriculation Status**

Degree-seeking	5,347	93.8%
Nondegree-seeking	355	6.2%

**By Attendance Status**

Full-time	4,801	84.2%
Part-time	901	15.8%

**By Undergraduate/Graduate Status**

Total Undergraduate	5,393	94.6%
Total Graduate	309	5.4%

**By Undergraduate Class (N=5,393)**

Freshmen	1,369	26.8%
Sophomores	1,141	22.3%
Juniors	1,365	26.7%
Seniors	1,239	24.2%
Unclassified UG/Nondegree-Seeking	279	N/A

**By Undergraduate Special Programs (N=5,393)**

EOF	302	5.6%
EOF Honor's Program	1	0.0%
Honor's Program	146	2.7%
No Special Program Designation	4,944	91.7%

**By Status When First Admitted (UG only N=5,393)**

EOF Admit	270	5.6%
EOF Transfer Admit	32	0.7%
Regular Admit	2,550	53.0%
Special Admit	329	6.8%
Transfer Admit	1,933	40.2%
Unclassified UG/Non-Matriculated	279	N/A

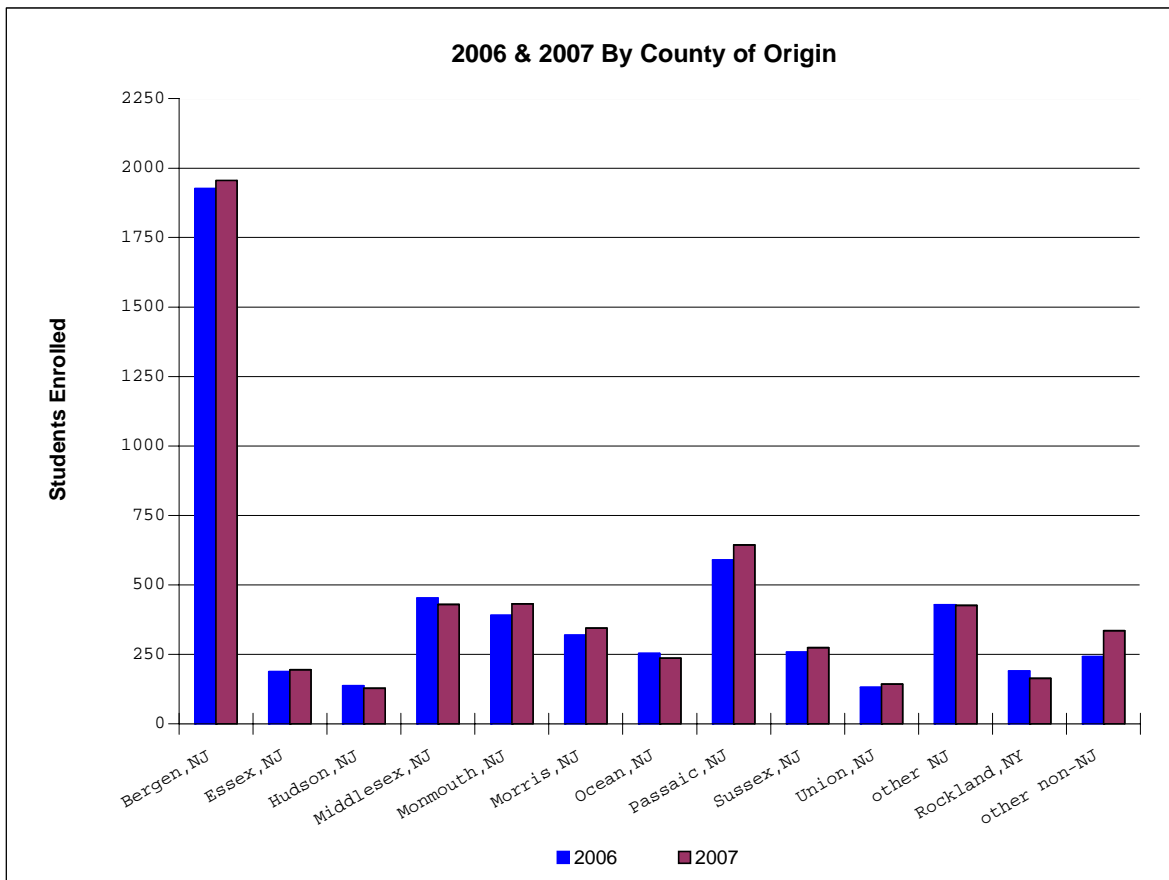
TOTAL FALL 2007 ENROLLMENT = 5,702

	First-time Undergraduate		Transfer Undergraduate		Readmitted Undergraduate		Continuing Undergraduate		First-time/Transfer Graduate		Continuing/Readmit Graduate		All Nondegree (Undergrad/Grad)	
	Number	Percent	Number	Percent	Number	Percent	Number	Percent	Number	Percent	Number	Percent	Number	Percent
<b>By Veteran Status</b>														
Veteran/Dependent	0	0.0%	0	0.0%	0	0.0%	23	0.7%	0	0.0%	1	0.6%	0	0.0%
Non-Veteran	902	100.0%	616	100.0%	68	100.0%	3,505	99.3%	79	100.0%	153	99.4%	355	100.0%
	902		616		68		3,528		79		154		355	
<b>By Disability Status</b>														
Disabled	30	3.3%	18	2.9%	2	2.9%	170	4.8%	0	0.0%	1	0.6%	10	2.8%
Not Disabled	872	96.7%	598	97.1%	66	97.1%	3,358	95.2%	79	100.0%	153	99.4%	345	97.2%
	902		616		68		3,528		79		154		355	
<b>By Attend. Status</b>														
Full-time	900	99.8%	549	89.1%	27	39.7%	3,227	91.5%	2	2.5%	4	2.6%	92	25.9%
Part-time	2	0.2%	67	10.9%	41	60.3%	301	8.5%	77	97.5%	150	97.4%	263	74.1%
	902		616		68		3,528		79		154		355	
<b>By Undergrad vs. Grad</b>														
Undergraduate	902	100.0%	616	100.0%	68	100.0%	3,528	100.0%	0	0.0%	0	0.0%	279	78.6%
Graduate	0	0.0%	0	0.0%	0	0.0%	0	0.0%	79	100.0%	154	100.0%	76	21.4%
	902		616		68		3,528		79		154		355	
<b>By UG Class (N=5,393)</b>														
Freshmen	894	99.1%	162	26.3%	7	10.3%	306	8.7%	0	0.0%	0	0.0%	0	0.0%
Sophomores	8	0.9%	232	37.7%	9	13.2%	892	25.3%	0	0.0%	0	0.0%	0	0.0%
Juniors	0	0.0%	221	35.9%	19	27.9%	1,125	31.9%	0	0.0%	0	0.0%	0	0.0%
Seniors	0	0.0%	1	0.2%	33	48.5%	1,205	34.2%	0	0.0%	0	0.0%	0	0.0%
Unclassified UG	0	N/A	0	N/A	0	N/A	0	N/A	0	N/A	0	N/A	279	N/A
	902		616		68		3,528		0		0		279	
<b>By UG Spec. Pr. (N=5,393)</b>														
EOF	74	8.7%	11	1.8%	3	4.4%	306	20.3%	0	0.0%	0	0.0%	0	0.0%
EOF Honor's Program	0	0.0%	0	0.0%	0	0.0%	892	59.0%	0	0.0%	0	0.0%	0	0.0%
Honor's Program	51	6.0%	1	0.2%	0	0.0%	1,125	74.5%	0	0.0%	0	0.0%	0	0.0%
No Spec. Pr. Desig.	777	91.3%	604	98.2%	65	95.6%	1,205	79.7%	0	0.0%	0	0.0%	279	100.0%
	902		616		68		3,528		0		0		279	
<b>By UG Admit Status (N=5,393)</b>														
EOF	74	8.2%	0	0.0%	3	4.4%	193	5.5%	0	0.0%	0	0.0%	0	0.0%
EOF Transfer	0	0.0%	11	1.8%	0	0.0%	21	0.6%	0	0.0%	0	0.0%	0	0.0%
Regular	701	77.7%	10	1.6%	24	35.3%	1,815	51.4%	0	0.0%	0	0.0%	0	0.0%
Special	127	14.1%	0	0.0%	5	7.4%	197	5.6%	0	0.0%	0	0.0%	0	0.0%
Transfer	0	0.0%	595	96.6%	36	52.9%	1,302	36.9%	0	0.0%	0	0.0%	0	0.0%
Unclassified UG	0	N/A	0	N/A	0	N/A	0	N/A	0	N/A	0	N/A	279	N/A
	902		616		68		3,528		0		0		279	

**By County of Origin**

Atlantic	13	0.2%	Salem	4	0.1%
Bergen	1,955	34.3%	Somerset	96	1.7%
Burlington	54	0.9%	Sussex	274	4.8%
Camden	47	0.8%	Union	142	2.5%
Cape May	12	0.2%	Warren	60	1.1%
Cumberland	9	0.2%	Subtotal	5,203	91.2%
Essex	194	3.4%	Rockland	164	2.9%
Gloucester	29	0.5%	Orange	91	1.6%
Hudson	127	2.2%	Westchester	7	0.1%
Hunterdon	60	1.1%	Other non-NJ	76	1.3%
Mercer	42	0.7%	blank (missing)	6	0.1%
Middlesex	429	7.5%	International	155	2.7%
Monmouth	432	7.6%	Subtotal	499	8.8%
Morris	344	6.0%			
Ocean	236	4.1%			
Passaic	644	11.3%			

**TOTAL** 5,702



TOTAL FALL 2007 ENROLLMENT = 5,702

**By Non-Citizen Country of Origin (N= 52 countries)**

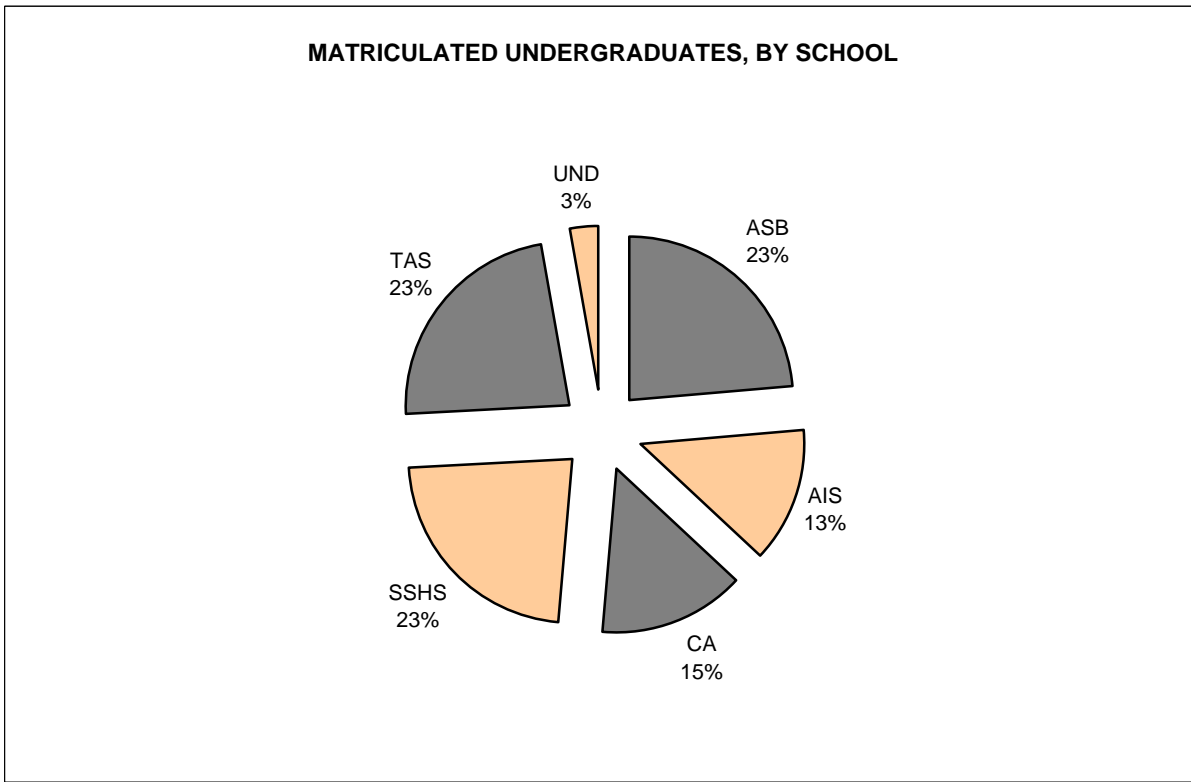
Bulgaria	38	24.5%
South Korea	10	6.5%
Trinidad and Tobago	9	5.8%
India	6	3.9%
Nigeria	6	3.9%
Poland	6	3.9%
Germany	5	3.2%
Kenya	5	3.2%
Japan	4	2.6%
Russia	4	2.6%
The Bahamas	4	2.6%
Brazil	3	1.9%
Israel	3	1.9%
Jamaica	3	1.9%
Pakistan	3	1.9%
Philippines	3	1.9%
China	2	1.3%
Croatia	2	1.3%
Iraq	2	1.3%
Italy	2	1.3%
Macedonia	2	1.3%
Romania	2	1.3%
Turkey	2	1.3%
Afghanistan	1	0.6%
Argentina	1	0.6%
Armenia	1	0.6%
Austria	1	0.6%
Bahrain	1	0.6%
Bangladesh	1	0.6%
Canada	1	0.6%
Colombia	1	0.6%
Egypt	1	0.6%
El Salvador	1	0.6%
Estonia	1	0.6%
Ethiopia	1	0.6%
France	1	0.6%
Haiti	1	0.6%
Hungary	1	0.6%
Indonesia	1	0.6%
Iran	1	0.6%
Lebanon	1	0.6%
Mauritius	1	0.6%
Mongolia	1	0.6%
Morocco	1	0.6%
Peru	1	0.6%
Slovakia	1	0.6%
South Africa	1	0.6%
Spain	1	0.6%
Sri Lanka	1	0.6%
St. Vincent and Grenadin	1	0.6%
Tanzania	1	0.6%
Yugoslavia Former	1	0.6%

155

TOTAL FALL 2007 ENROLLMENT = 5,702

**By School, Matriculated Undergraduates (N= 5,114)**

Anisfield School of Business	1,208	23.6%
American and International Studies	675	13.2%
Contemporary Arts	752	14.7%
Social Science and Human Services	1,153	22.5%
Theoretical and Applied Sciences	1,190	23.3%
Matriculated - School Undecided	136	2.7%

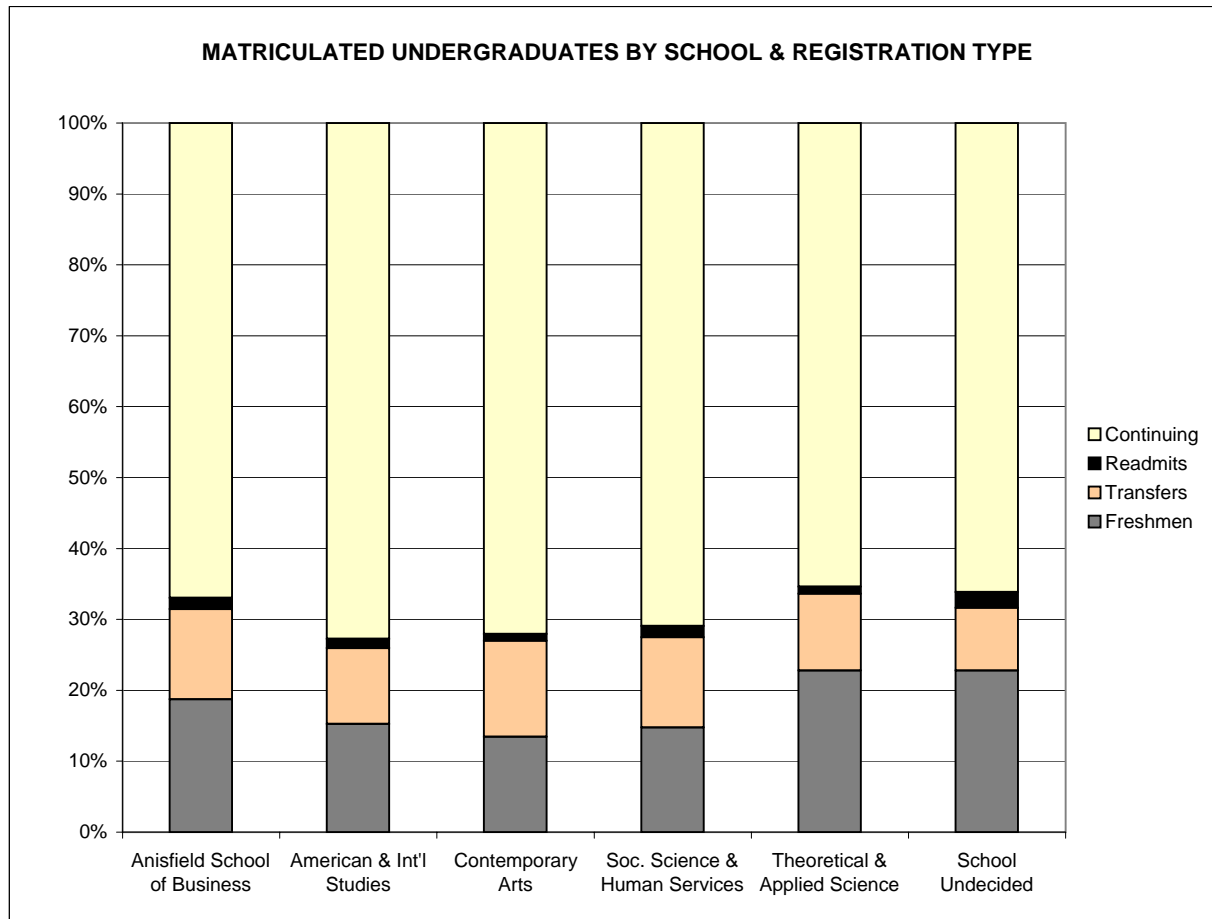




TOTAL FALL 2007 ENROLLMENT = 5,702

By UG School [1]	First-time Undergraduate		Transfer Undergraduate		Readmitted Undergraduate		Continuing Undergraduate	
	Number	Row Percent	Number	Row Percent	Number	Row Percent	Number	Row Percent
Anisfield School of Business	226	18.7%	154	12.7%	19	1.6%	809	67.0%
American & Int'l Studies	103	15.3%	72	10.7%	9	1.3%	491	72.7%
Contemporary Arts	101	13.4%	102	13.6%	7	0.9%	542	72.1%
Soc. Science & Human Services	170	14.7%	147	12.7%	18	1.6%	818	70.9%
Theoretical & Applied Science	271	22.8%	129	10.8%	12	1.0%	778	65.4%
School Undecided	31	22.8%	12	8.8%	3	2.2%	90	66.2%
	902	17.6%	616	12.0%	68	1.3%	3,528	69.0%

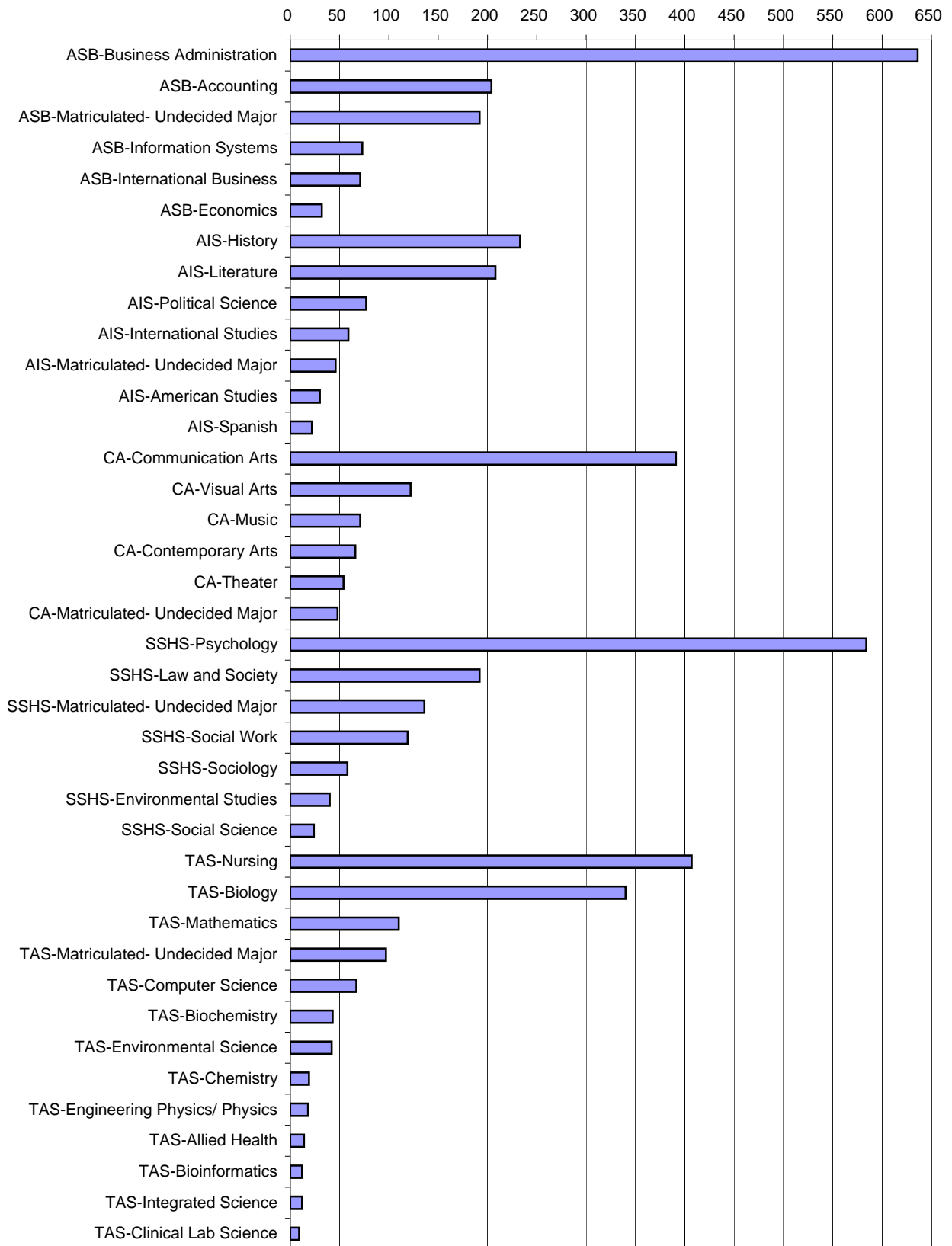
[1] Matriculated undergraduates (N = 5,114)



**By School and Major, Matriculated Undergraduates (N= 5,114)**

ASB	Accounting	204	4.0%
	Business Administration	636	12.4%
	Economics	32	0.6%
	Information Systems	73	1.4%
	International Business	71	1.4%
	Matriculated- Undecided Major	192	3.8%
AIS	American Studies	30	0.6%
	History	233	4.6%
	International Studies	59	1.2%
	Literature	208	4.1%
	Political Science	77	1.5%
	Spanish	22	0.4%
	Matriculated- Undecided Major	46	0.9%
CA	Communication Arts	391	7.6%
	Contemporary Arts	66	1.3%
	Music	71	1.4%
	Theater	54	1.1%
	Visual Arts	122	2.4%
	Matriculated- Undecided Major	48	0.9%
SSHS	Environmental Studies	40	0.8%
	Law and Society	192	3.8%
	Psychology	584	11.4%
	Social Science	24	0.5%
	Social Work	119	2.3%
	Sociology	58	1.1%
	Matriculated- Undecided Major	136	2.7%
TAS	Allied Health	14	0.3%
	Biochemistry	43	0.8%
	Bioinformatics	12	0.2%
	Biology	340	6.6%
	Chemistry	19	0.4%
	Clinical Lab Science	9	0.2%
	Computer Science	67	1.3%
	Engineering Physics/ Physics	18	0.4%
	Environmental Science	42	0.8%
	Integrated Science	12	0.2%
	Mathematics	110	2.2%
	Nursing	407	8.0%
	Matriculated- Undecided Major	97	1.9%
UND	School & Major Undecided	136	2.7%

**FALL 2007 MATRICULATED UNDERGRADUATE  
ENROLLMENT BY SCHOOL AND MAJOR**



TOTAL FALL 2007 ENROLLMENT = 5,702

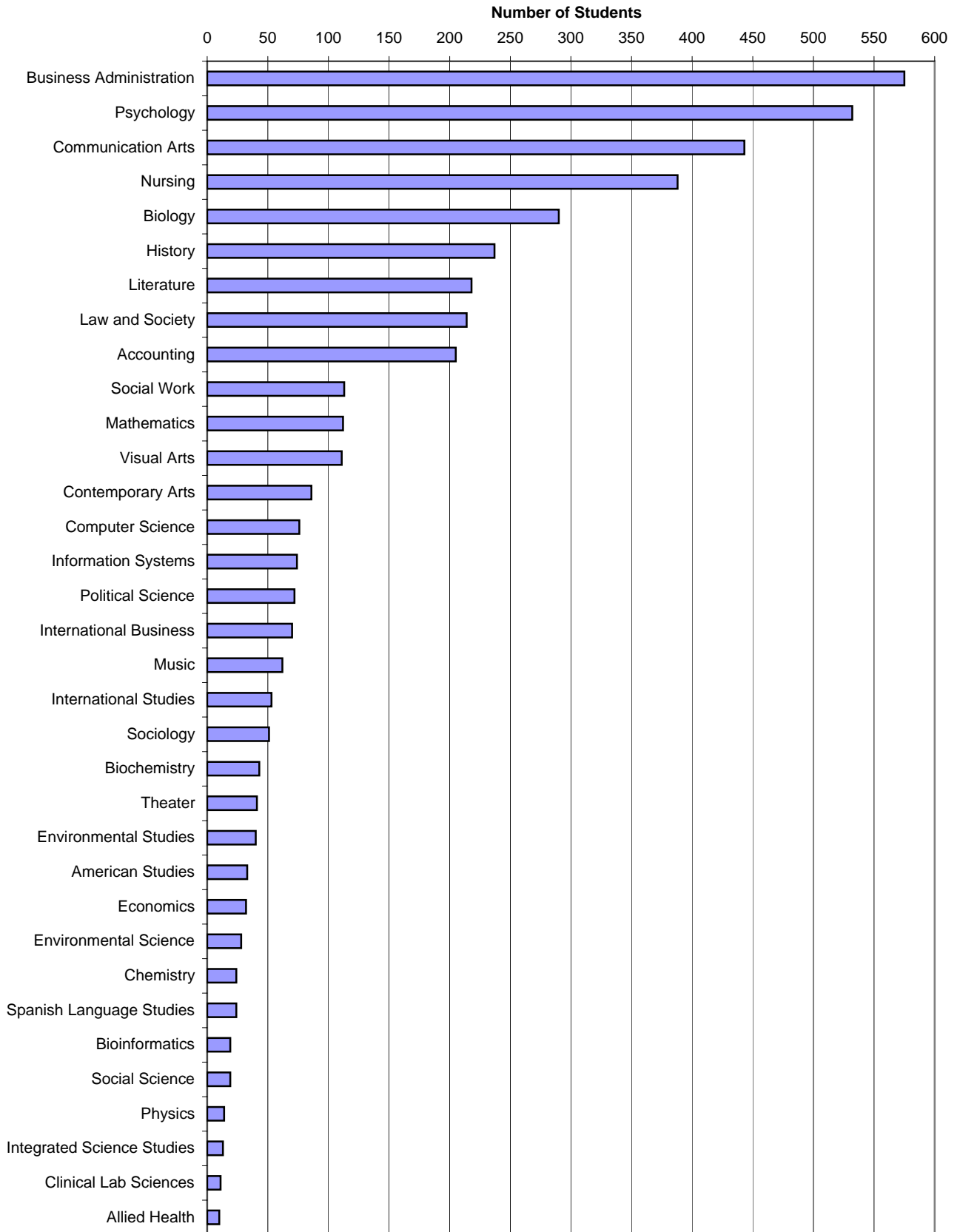
**By Major, Matriculated Undergraduates (N = 5,114)**

Accounting	204	4.6%
Allied Health	14	0.3%
American Studies	30	0.7%
Biochemistry	43	1.0%
Bioinformatics	12	0.3%
Biology	340	7.6%
Business Administration	636	14.3%
Chemistry	19	0.4%
Clinical Lab Sciences	9	0.2%
Communication Arts	391	8.8%
Computer Science	67	1.5%
Contemporary Arts	66	1.5%
Economics	32	0.7%
Engineering <b>Physics</b>	18	0.4%
Environmental Science	42	0.9%
Environmental Studies	40	0.9%
History	233	5.2%
Information Systems	73	1.6%
Integrated Science Studies	12	0.3%
International Business	71	1.6%
International Studies	59	1.3%
Law and Society	192	4.3%
Literature	208	4.7%
Mathematics	110	2.5%
Music	71	1.6%
Nursing	407	9.1%
Political Science	77	1.7%
Psychology	584	13.1%
Social Science	24	0.5%
Social Work	119	2.7%
Sociology	58	1.3%
Spanish Language Studies	22	0.5%
Theater	54	1.2%
Visual Arts	122	2.7%
Undecided Major	655	N/A

5,114

TOTAL FALL 2007 ENROLLMENT = 5,702

**FALL 2007 MATRICULATED UNDERGRADUATE  
ENROLLMENT BY PRIMARY MAJOR**



**MATRICULATED UNDERGRADUATES (N = 5,114 ) BY SCHOOL, MAJOR, AND REGISTRATION TYPE**

		First-time Undergraduate		Transfer Undergraduate		Readmitted Undergraduate		Continuing Undergraduate	
		Number	Row Pct	Number	Row Pct	Number	Row Pct	Number	Row Pct
ASB	Accounting	30	14.7%	24	11.8%	1	0.5%	149	73.0%
	Business Administration	85	13.4%	93	14.6%	11	1.7%	447	70.3%
	Economics	2	6.3%	2	6.3%	3	9.4%	25	78.1%
	Information Systems	5	6.8%	3	4.1%	2	2.7%	63	86.3%
	International Business	14	19.7%	7	9.9%	1	1.4%	49	69.0%
	Matriculated- Undecided Major	90	46.9%	25	13.0%	1	0.5%	76	39.6%
AIS	American Studies	2	6.7%	3	10.0%	1	3.3%	24	80.0%
	History	25	10.7%	26	11.2%	2	0.9%	180	77.3%
	International Studies	10	16.9%	4	6.8%	1	1.7%	44	74.6%
	Literature	25	12.0%	28	13.5%	2	1.0%	153	73.6%
	Political Science	15	19.5%	3	3.9%	2	2.6%	57	74.0%
	Spanish Language Studies	7	31.8%	2	9.1%	1	4.5%	12	54.5%
	Matriculated- Undecided Major	19	41.3%	6	13.0%	--	0.0%	21	45.7%
CA	Communication Arts	36	9.2%	48	12.3%	4	1.0%	303	77.5%
	Contemporary Arts	5	7.6%	3	4.5%	--	0.0%	58	87.9%
	Music	6	8.5%	19	26.8%	1	1.4%	45	63.4%
	Theater	9	16.7%	11	20.4%	--	0.0%	34	63.0%
	Visual Arts	23	18.9%	16	13.1%	1	0.8%	82	67.2%
	Matriculated- Undecided Major	22	45.8%	5	10.4%	1	2.1%	20	41.7%
SSHS	Environmental Studies	2	5.0%	4	10.0%	1	2.5%	33	82.5%
	Law and Society	21	10.9%	17	8.9%	4	2.1%	150	78.1%
	Psychology	88	15.1%	79	13.5%	9	1.5%	408	69.9%
	Social Science	--	0.0%	6	25.0%	2	8.3%	16	66.7%
	Social Work	10	8.4%	18	15.1%	2	1.7%	89	74.8%
	Sociology	3	5.2%	6	10.3%	--	0.0%	49	84.5%
	Matriculated- Undecided Major	46	33.8%	17	12.5%	--	0.0%	73	53.7%
TAS	Allied Health	2	14.3%	8	57.1%	--	0.0%	4	28.6%
	Biochemistry	7	16.3%	--	0.0%	--	0.0%	36	83.7%
	Bioinformatics	1	8.3%	1	8.3%	--	0.0%	10	83.3%
	Biology	84	24.7%	43	12.6%	2	0.6%	211	62.1%
	Chemistry	3	15.8%	1	5.3%	--	0.0%	15	78.9%
	Clinical Lab Science	1	11.1%	2	22.2%	--	0.0%	6	66.7%
	Computer Science	12	17.9%	7	10.4%	3	4.5%	45	67.2%
	Engineering Physics	4	6.0%	2	3.0%	1	1.5%	11	16.4%
	Environmental Science	6	33.3%	4	22.2%	--	0.0%	32	177.8%
	Integrated Science	1	2.4%	2	4.8%	--	0.0%	9	21.4%
	Mathematics	27	225.0%	11	91.7%	--	0.0%	72	600.0%
	Nursing	85	77.3%	38	34.5%	5	4.5%	279	253.6%
	Matriculated- Undecided Major	38	39.2%	10	10.3%	1	1.0%	48	49.5%
UND	School & Major Undecided	31	22.8%	12	8.8%	3	2.2%	90	66.2%
		902	17.6%	616	12.0%	68	1.3%	3,528	69.0%

**By School, Primary Major and Concentration/Track, Matriculated Undergraduates**

<u><b>Anisfield School of Business</b></u>		Count	Pct. of Major
Business Administration	Finance	152	23.9%
	Management	237	37.3%
	Marketing	206	32.4%
	Unspecified	<u>41</u>	6.4%
		636	
 <u><b>Contemporary Arts</b></u>			
Communication Arts	Creative Writing	39	10.0%
	Design & Interactive Media	58	14.8%
	Digital Filmmaking	46	11.8%
	Journalism	60	15.3%
	Media & Cinema Studies	76	19.4%
	Unspecified	<u>112</u>	28.6%
		391	
Music	Music Industry	16	22.5%
	Music Production	9	12.7%
	Music Performance	3	4.2%
	Music Studies	3	4.2%
	Unspecified	<u>40</u>	56.3%
		71	
Theater	Acting	20	37.0%
	Design/Technical Theater	2	3.7%
	Directing/Stage Management	3	5.6%
	Theater Studies	1	
	Unspecified	<u>28</u>	51.9%
		54	
Visual Arts	Art History	5	4.1%
	Drawing / Painting	25	20.5%
	New Media/Computer Art	1	0.8%
	Photography	6	4.9%
	Sculpture	3	2.5%
	Unspecified	<u>82</u>	67.2%
		122	
 <u><b>Social Science and Human Services</b></u>			
Social Science	Africana Studies	1	4.2%
	Community Mental Health	4	16.7%
	Cultural Studies	2	8.3%
	Women's Studies	1	4.2%
	Unspecified	<u>16</u>	66.7%
		24	
 <u><b>Theoretical and Applied Science</b></u>			
Biology	Physician's Assistant	15	4.4%
	Physical Therapy	49	14.4%
	Chiropractic	3	0.9%
	Dental	14	4.1%
	Optometry	3	0.9%
	Unspecified	<u>256</u>	75.3%
		340	
Nursing	RN/BSN	76	18.7%
	Generic BSN	<u>331</u>	81.3%
		407	

**Provisional Status by Major and Primary Concentration/Track within Major, Matriculated Undergraduates**

Primary Major and Concentration/Track	Officially Accepted Majors		Provisional Majors		Total Majors
	Number	Pct. of Total	Number	Pct. of Total	
Accounting	147	72.1%	57	27.9%	204
Business Admin. (Finance)	100	65.8%	52	34.2%	152
Business Admin. (Management)	148	62.4%	89	37.6%	237
Business Admin. (Marketing)	141	68.4%	65	31.6%	206
Business Admin. (Unspecified)	<u>9</u>	<u>22.0%</u>	<u>32</u>	<u>78.0%</u>	<u>41</u>
	398	62.6%	238	37.4%	636
Communication Arts (Creative Writing)	35	100.0%	0	0.0%	35
Com. Art. (Design & Interactive Media)	56	96.6%	2	3.4%	58
Com. Art. (Digital Filmmaking)	44	95.7%	2	4.3%	46
Com. Art. (Journalism)	60	100.0%	0	0.0%	60
Com. Art. (Media & Cinema Studies)	71	94.7%	4	5.3%	75
Com. Art. (Unspecified)	<u>117</u>	<u>100.0%</u>	<u>0</u>	<u>0.0%</u>	<u>117</u>
	383	98.0%	8	2.0%	391
Economics	29	90.6%	3	9.4%	32
Information Systems	62	84.9%	11	15.1%	73
International Business	43	60.6%	28	39.4%	71
Nursing (RN/BSN)	18	23.7%	58	76.3%	76
Nursing (Generic BSN)	<u>154</u>	<u>46.5%</u>	<u>177</u>	<u>53.5%</u>	<u>331</u>
	172	42.3%	235	57.7%	407
Social Work	116	97.5%	3	2.5%	119
Total	2,303	68.4%	1,064	31.6%	3,367



**By Certificate Program**

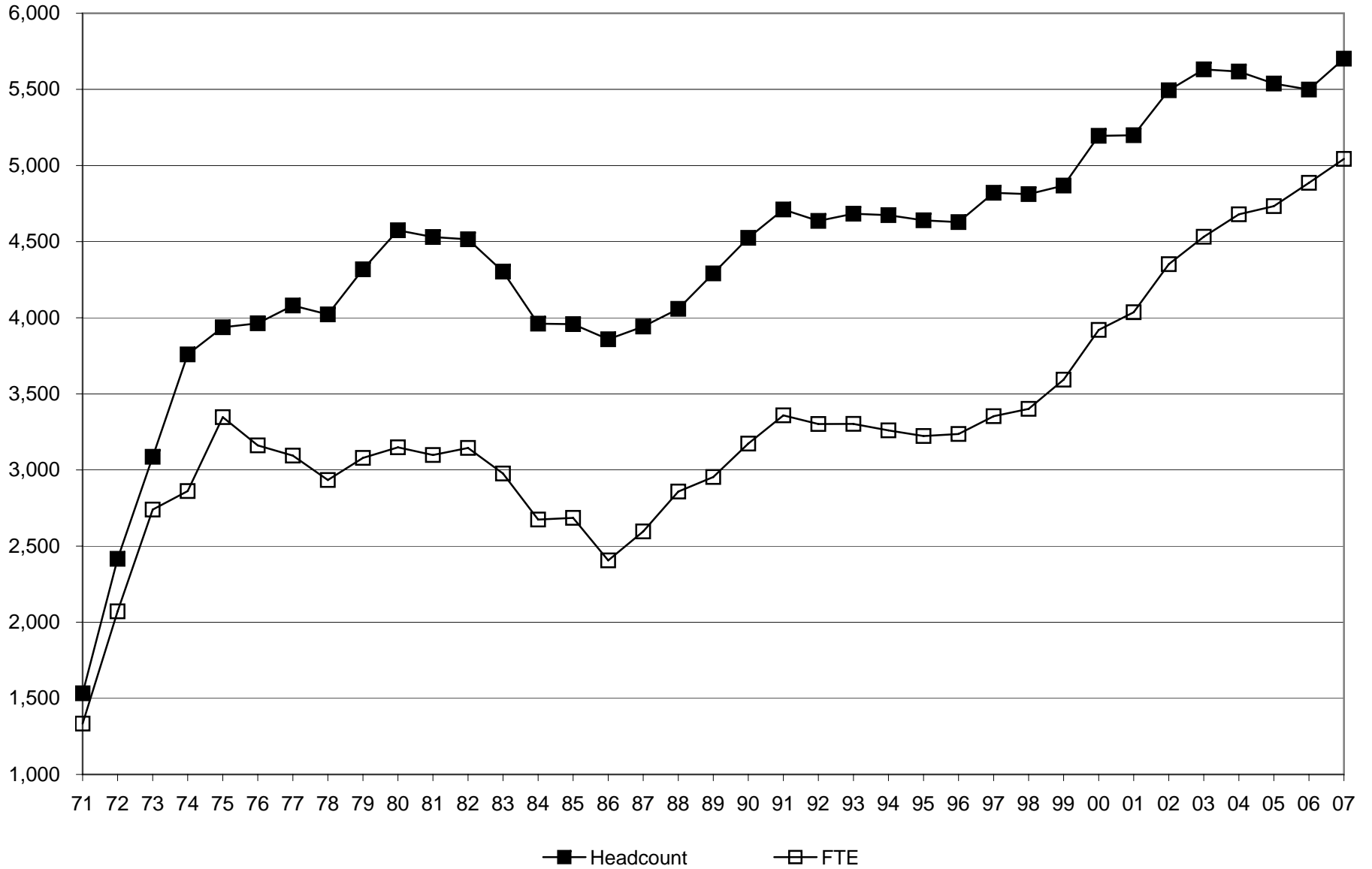
	Baccalaureate students		Post-baccalaureate students		All Students <sup>[1]</sup>	
Teacher Certification - Art	12	3.9%	4	6.5%	16	4.3%
Teacher Certification - Biology	9	2.9%	2	3.2%	11	3.0%
Teacher Certification - Business	5	1.6%	1	1.6%	6	1.6%
Teacher Certification - Chemistry	3	1.0%	1	1.6%	4	1.1%
Teacher Certification - Drama	1	0.3%	0	0.0%	1	0.3%
Teacher Certification - Earth Science	4	1.3%	2	3.2%	6	1.6%
Teacher Certification - Elementary Education	143	46.7%	30	48.4%	173	47.0%
Teacher Certification - English	41	13.4%	8	12.9%	49	13.3%
Teacher Certification - Foreign Language/French	1	0.3%	1	1.6%	2	0.5%
Teacher Certification - Foreign Language/Italian	1	0.3%	1	1.6%	2	0.5%
Teacher Certification - Foreign Language/Spanish	7	2.3%	0	0.0%	7	1.9%
Teacher Certification - Mathematics	24	7.8%	3	4.8%	27	7.3%
Teacher Certification - Music	4	1.3%	2	3.2%	6	1.6%
Teacher Certification - Physical Science	1	0.3%	0	0.0%	1	0.3%
Teacher Certification - Physics	1	0.3%	0	0.0%	1	0.3%
Teacher Certification - Social Studies	48	15.7%	7	11.3%	55	14.9%
Teacher Certification - general	1	0.3%	0	0.0%	1	0.3%
<b>TOTAL</b>	<b>306</b>		<b>62</b>		<b>368</b>	

[1] Includes Major1 and Major2.

TOTAL FALL 2007 ENROLLMENT = 5,702

Year	HEADCOUNT			FTE		
	Total Headcount	Percent Change From Previous Fall Semester	Cumulative Percent Change From Fall 1971	Total FTE	Percent Change From Previous Fall Semester	Cumulative Percent Change From Fall 1971
1971	1,533	N/A	0.0%	1,334	N/A	0.0%
1972	2,416	57.6%	57.6%	2,071	55.2%	55.2%
1973	3,086	27.7%	101.3%	2,740	32.3%	105.4%
1974	3,759	21.8%	145.2%	2,861	4.4%	114.5%
1975	3,937	4.7%	156.8%	3,347	17.0%	150.9%
1976	3,963	0.7%	158.5%	3,161	-5.6%	137.0%
1977	4,080	3.0%	166.1%	3,094	-2.1%	131.9%
1978	4,022	-1.4%	162.4%	2,934	-5.2%	119.9%
1979	4,318	7.4%	181.7%	3,079	4.9%	130.8%
1980	4,574	5.9%	198.4%	3,149	2.3%	136.1%
1981	4,530	-1.0%	195.5%	3,098	-1.6%	132.2%
1982	4,515	-0.3%	194.5%	3,145	1.5%	135.8%
1983	4,303	-4.7%	180.7%	2,977	-5.3%	123.2%
1984	3,961	-7.9%	158.4%	2,674	-10.2%	100.4%
1985	3,958	-0.1%	158.2%	2,685	0.4%	101.3%
1986	3,858	-2.5%	151.7%	2,406	-10.4%	80.4%
1987	3,942	2.2%	157.1%	2,596	7.9%	94.6%
1988	4,058	2.9%	164.7%	2,858	10.1%	114.2%
1989	4,291	5.7%	179.9%	2,954	3.4%	121.4%
1990	4,525	5.5%	195.2%	3,173	7.4%	137.9%
1991	4,711	4.1%	207.3%	3,359	5.9%	151.8%
1992	4,636	-1.6%	202.4%	3,302	-1.7%	147.5%
1993	4,683	1.0%	205.5%	3,303	0.0%	147.6%
1994	4,674	-0.2%	204.9%	3,260	-1.3%	144.4%
1995	4,640	-0.7%	202.7%	3,223	-1.1%	141.6%
1996	4,628	-0.3%	201.9%	3,236	0.4%	142.6%
1997	4,821	4.2%	214.5%	3,353	3.6%	151.3%
1998	4,812	-0.2%	213.9%	3,401	1.4%	154.9%
1999	4,868	1.2%	217.5%	3,593	5.6%	169.3%
2000	5,195	6.7%	238.9%	3,920	9.1%	193.9%
2001	5,199	0.1%	239.1%	4,036	3.0%	202.5%
2002	5,494	5.7%	258.4%	4,352	7.8%	226.2%
2003	5,631	2.5%	267.3%	4,532	4.1%	239.7%
2004	5,617	-0.2%	266.4%	4,679	3.2%	250.7%
2005	5,538	-1.4%	261.3%	4,733	1.2%	254.8%
2006	5,499	-0.7%	258.7%	4,886	3.2%	266.3%
2007	5,702	3.7%	272.0%	5,043	3.2%	278.0%

### TOTAL ENROLLMENT, FALL 1971 TO FALL 2007



**TOTAL FALL 2007 ENROLLMENT = 5,702**

Year	Undergraduate Headcount			Undergraduate FTE			Graduate Headcount			Graduate FTE		
	Total Undergrad Headcount	Percent Change From Previous Fall Semester	Cumulative Percent Change From Fall 1971	Total Undergrad FTE	Percent Change From Previous Fall Semester	Cumulative Percent Change From Fall 1971	Graduate Headcount	Percent Change From Previous Fall Semester	Cumulative Percent Change From Fall 1995	Total Graduate FTE	Percent Change From Previous Fall Semester	Cumulative Percent Change From Fall 1995
1971	1,533	N/A	0.0%	1,334	N/A	0.0%	-	-	-	-	-	-
1972	2,416	57.6%	57.6%	2,071	55.2%	55.2%	-	-	-	-	-	-
1973	3,086	27.7%	101.3%	2,740	32.3%	105.4%	-	-	-	-	-	-
1974	3,759	21.8%	145.2%	2,861	4.4%	114.5%	-	-	-	-	-	-
1975	3,937	4.7%	156.8%	3,347	17.0%	150.9%	-	-	-	-	-	-
1976	3,963	0.7%	158.5%	3,161	-5.6%	137.0%	-	-	-	-	-	-
1977	4,080	3.0%	166.1%	3,094	-2.1%	131.9%	-	-	-	-	-	-
1978	4,022	-1.4%	162.4%	2,934	-5.2%	119.9%	-	-	-	-	-	-
1979	4,318	7.4%	181.7%	3,079	4.9%	130.8%	-	-	-	-	-	-
1980	4,574	5.9%	198.4%	3,149	2.3%	136.1%	-	-	-	-	-	-
1981	4,530	-1.0%	195.5%	3,098	-1.6%	132.2%	-	-	-	-	-	-
1982	4,515	-0.3%	194.5%	3,145	1.5%	135.8%	-	-	-	-	-	-
1983	4,303	-4.7%	180.7%	2,977	-5.3%	123.2%	-	-	-	-	-	-
1984	3,961	-7.9%	158.4%	2,674	-10.2%	100.4%	-	-	-	-	-	-
1985	3,958	-0.1%	158.2%	2,685	0.4%	101.3%	-	-	-	-	-	-
1986	3,858	-2.5%	151.7%	2,406	-10.4%	80.4%	-	-	-	-	-	-
1987	3,942	2.2%	157.1%	2,596	7.9%	94.6%	-	-	-	-	-	-
1988	4,058	2.9%	164.7%	2,858	10.1%	114.2%	-	-	-	-	-	-
1989	4,291	5.7%	179.9%	2,954	3.4%	121.4%	-	-	-	-	-	-
1990	4,525	5.5%	195.2%	3,173	7.4%	137.9%	-	-	-	-	-	-
1991	4,711	4.1%	207.3%	3,359	5.9%	151.8%	-	-	-	-	-	-
1992	4,636	-1.6%	202.4%	3,302	-1.7%	147.5%	-	-	-	-	-	-
1993	4,683	1.0%	205.5%	3,303	0.0%	147.6%	-	-	-	-	-	-
1994	4,674	-0.2%	204.9%	3,260	-1.3%	144.4%	-	-	-	-	-	-
1995	4,543	-2.8%	196.3%	3,176	-2.6%	138.1%	97	N/A	0.0%	47	N/A	0.0%
1996	4,526	-0.4%	195.2%	3,193	0.5%	139.4%	102	5.2%	5.2%	43	-8.5%	-8.5%
1997	4,681	3.4%	205.3%	3,287	2.9%	146.4%	140	37.3%	44.3%	66	53.5%	40.4%
1998	4,658	-0.5%	203.8%	3,350	1.9%	151.1%	154	10.0%	58.8%	51	-22.7%	8.5%
1999	4,655	-0.1%	203.7%	3,508	4.7%	163.0%	213	38.3%	119.6%	85	66.7%	80.9%
2000	4,906	5.4%	220.0%	3,805	8.5%	185.2%	289	35.7%	197.9%	115	35.3%	144.7%
2001	4,890	-0.3%	219.0%	3,918	3.0%	193.7%	309	6.9%	218.6%	118	2.6%	151.1%
2002	5,143	5.2%	235.5%	4,215	7.6%	216.0%	351	13.6%	261.9%	137	16.1%	191.5%
2003	5,242	1.9%	241.9%	4,378	3.9%	228.2%	389	10.8%	301.0%	154	12.4%	227.7%
2004	5,278	0.7%	244.3%	4,536	3.6%	240.0%	339	-12.9%	249.5%	143	-7.1%	204.3%
2005	5,233	-0.9%	241.4%	4,606	1.5%	245.3%	305	-10.0%	214.4%	127	-11.2%	170.2%
2006	5,188	-0.9%	238.4%	4,768	3.5%	257.4%	311	2.0%	220.6%	118	-7.1%	151.1%
2007	5,393	4.0%	251.8%	4,919	3.2%	268.7%	309	-0.6%	218.6%	124	5.1%	163.8%

**ENROLLMENT TRENDS FOR NEW, TRANSFER, READMITTED, CONTINUING, AND NONDEGREE STUDENTS  
COMBINED UNDERGRADUATE AND GRADUATE, FALL 2003 TO FALL 2007**

	2003		2004		2005		2006		2007		Percent Change 03 to 07	Percent Change 06 to 07
	No.	Pct.	No.	Pct.	No.	Pct.	No.	Pct.	No.	Pct.		
First-time Undergraduates	725	12.9%	755	13.4%	748	13.5%	814	14.8%	902	15.8%	24.4%	10.8%
First-time Graduate Students	<u>64</u>	<u>1.1%</u>	<u>67</u>	<u>1.2%</u>	<u>68</u>	<u>1.2%</u>	<u>58</u>	<u>1.1%</u>	<u>79</u>	<u>1.4%</u>	23.4%	36.2%
<i>Subtotal: First-time</i>	789	14.0%	822	14.6%	816	14.7%	872	15.9%	981	17.2%	24.3%	12.5%
Undergraduate Transfers [1]	498	8.8%	491	8.7%	472	8.5%	610	11.1%	616	10.8%	23.7%	1.0%
Graduate Transfers	<u>0</u>	<u>0.0%</u>	<u>0</u>	<u>0.0%</u>	<u>0</u>	<u>0.0%</u>	<u>0</u>	<u>0.0%</u>	<u>0</u>	<u>0.0%</u>	N/A	N/A
<i>Subtotal: Transfers</i>	498	8.8%	491	8.7%	472	8.5%	610	11.1%	616	10.8%	23.7%	1.0%
Undergraduate Readmits [2]	67	1.2%	82	1.5%	68	1.2%	59	1.1%	68	1.2%	1.5%	15.3%
Graduate Readmits	<u>1</u>	<u>0.0%</u>	<u>1</u>	<u>0.0%</u>	<u>1</u>	<u>0.0%</u>	<u>0</u>	<u>0.0%</u>	<u>0</u>	<u>0.0%</u>	-100.0%	#DIV/0!
<i>Subtotal: Readmits</i>	68	1.2%	83	1.5%	69	1.2%	59	1.1%	68	1.2%	0.0%	15.3%
Undergraduate Continuing [3]	3,477	61.7%	3,505	62.4%	3,572	64.5%	3,423	62.2%	3,528	61.9%	1.5%	3.1%
Graduate Continuing	<u>194</u>	<u>3.4%</u>	<u>175</u>	<u>3.1%</u>	<u>157</u>	<u>2.8%</u>	<u>136</u>	<u>2.5%</u>	<u>154</u>	<u>2.7%</u>	-20.6%	13.2%
<i>Subtotal: Continuing</i>	3,671	65.2%	3,680	65.5%	3,729	67.3%	3,559	64.7%	3,682	64.6%	0.3%	3.5%
UG Nondegree - New	305	5.4%	272	4.8%	241	4.4%	165	3.0%	205	3.6%	-32.8%	24.2%
UG Nondegree - Continuing	170	3.0%	173	3.1%	132	2.4%	117	2.1%	74	1.3%	-56.5%	-36.8%
Grad Nondegree - New	76	1.3%	33	0.6%	25	0.5%	21	0.4%	34	0.6%	-55.3%	61.9%
Grad Nondegree - Continuing	<u>54</u>	<u>1.0%</u>	<u>63</u>	<u>1.1%</u>	<u>54</u>	<u>1.0%</u>	<u>96</u>	<u>1.7%</u>	<u>42</u>	<u>0.7%</u>	-22.2%	-56.3%
<i>Subtotal: Nondegree</i>	605	10.7%	541	9.6%	452	8.2%	399	7.3%	355	6.2%	-41.3%	-11.0%
<b>TOTAL</b>	<b>5,631</b>		<b>5,617</b>		<b>5,538</b>		<b>5,499</b>		<b>5,702</b>		<b>1.3%</b>	<b>3.7%</b>

[1] Excludes "stop-outs" (students absent for only one semester who need not apply for formal readmission) and "internal transfers" (students who change from nondegree-seeking to degree-seeking status and have registration type "Ramapo Non-Matriculant").

[2] Excludes "stop-outs" and "internal transfers."

[3] Includes "stop-outs" and "internal transfers."

**ENROLLMENT BY AGE, FALL 2003 TO FALL 2007**

Undergraduate Students	Fall 2003		Fall 2004		Fall 2005		Fall 2006		Fall 2007		Pct. Change 03 to 07	Pct. Change 06 to 07
	No.	Pct.	No.	Pct.	No.	Pct.	No.	Pct.	No.	Pct.		
Less Than 20	1,362	26.0%	1,435	27.2%	1,446	27.6%	1,463	28.2%	1,617	30.0%	18.7%	10.5%
20 to 24	2,725	52.0%	2,778	52.6%	2,857	54.6%	2,953	56.9%	3,070	56.9%	12.7%	4.0%
25 to 29	465	8.9%	414	7.8%	356	6.8%	310	6.0%	303	5.6%	-34.8%	-2.3%
30 to 39	320	6.1%	301	5.7%	266	5.1%	219	4.2%	193	3.6%	-39.7%	-11.9%
40 and Over	370	7.1%	350	6.6%	308	5.9%	243	4.7%	210	3.9%	-43.2%	-13.6%
Missing	0	N/A	0	N/A	0	N/A	0	N/A	0	N/A	N/A	N/A
<b>Total</b>	<b>5,242</b>		<b>5,278</b>		<b>5,233</b>		<b>5,188</b>		<b>5,393</b>		<b>2.9%</b>	<b>4.0%</b>

Graduate Students	Fall 2003		Fall 2004		Fall 2005		Fall 2006		Fall 2007		Pct. Change 03 to 07	Pct. Change 06 to 07
	No.	Pct.	No.	Pct.	No.	Pct.	No.	Pct.	No.	Pct.		
Less Than 20	0	0.0%	0	0.0%	0	0.0%	0	0.0%	0	0.0%	N/A	N/A
20 to 24	39	10.0%	28	8.3%	21	6.9%	19	6.1%	20	6.5%	-48.7%	5.3%
25 to 29	127	32.6%	92	27.1%	85	27.9%	91	29.4%	77	24.9%	-39.4%	-15.4%
30 to 39	91	23.4%	87	25.7%	74	24.3%	72	23.2%	83	26.9%	-8.8%	15.3%
40 and Over	132	33.9%	132	38.9%	125	41.0%	128	41.3%	129	41.7%	-2.3%	0.8%
Missing	0	N/A	0	N/A	0	N/A	1	N/A	0	N/A	N/A	N/A
<b>Total</b>	<b>389</b>		<b>339</b>		<b>305</b>		<b>311</b>		<b>309</b>		<b>-20.6%</b>	<b>-0.6%</b>

All Students	Fall 2003		Fall 2004		Fall 2005		Fall 2006		Fall 2007		Pct. Change 03 to 07	Pct. Change 06 to 07
	No.	Pct.	No.	Pct.	No.	Pct.	No.	Pct.	No.	Pct.		
Less Than 20	1,362	24.2%	1,435	25.5%	1,446	26.1%	1,463	26.6%	1,617	28.4%	18.7%	10.5%
20 to 24	2,764	49.1%	2,806	50.0%	2,878	52.0%	2,972	54.1%	3,090	54.2%	11.8%	4.0%
25 to 29	592	10.5%	506	9.0%	441	8.0%	401	7.3%	380	6.7%	-35.8%	-5.2%
30 to 39	411	7.3%	388	6.9%	340	6.1%	291	5.3%	276	4.8%	-32.8%	-5.2%
40 and Over	502	8.9%	482	8.6%	433	7.8%	371	6.7%	339	5.9%	-32.5%	-8.6%
Missing	0	N/A	0	N/A	0	N/A	1	N/A	0	N/A	N/A	N/A
<b>Total</b>	<b>5,631</b>		<b>5,617</b>		<b>5,538</b>		<b>5,499</b>		<b>5,702</b>		<b>1.3%</b>	<b>3.7%</b>

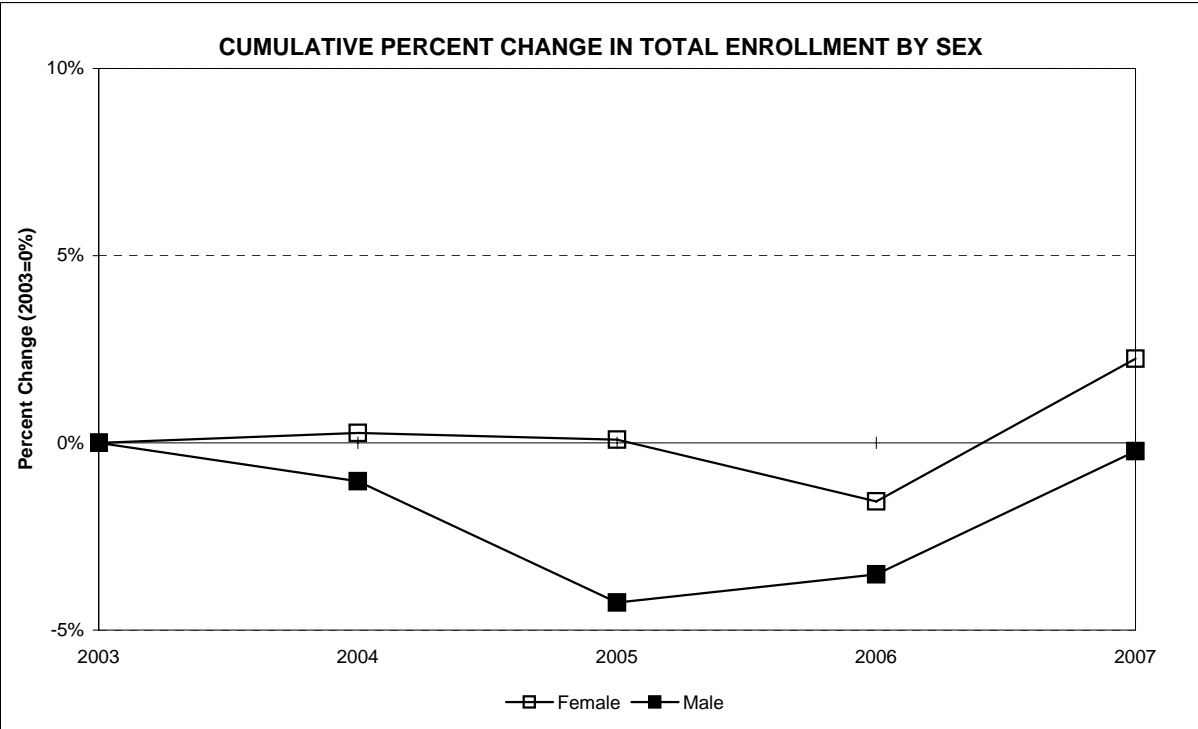
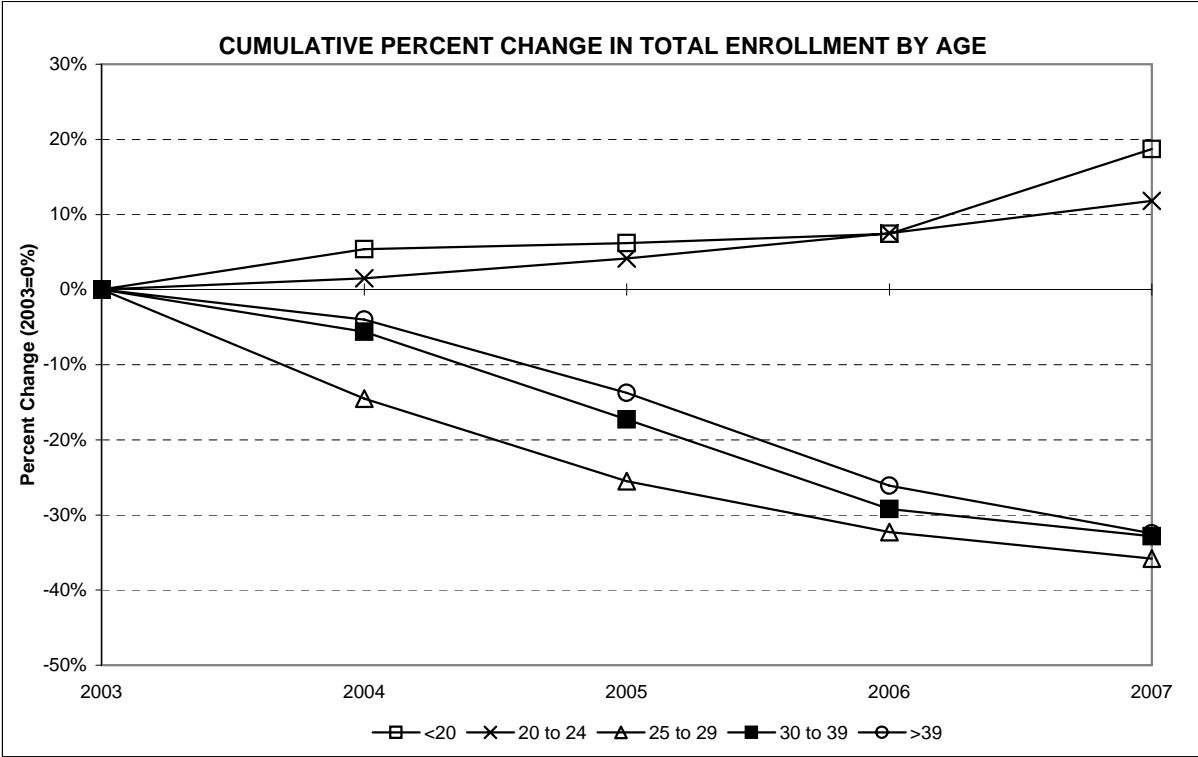


**ENROLLMENT BY SEX, FALL 2003 TO FALL 2007**

Undergraduate Students	Fall 2003		Fall 2004		Fall 2005		Fall 2006		Fall 2007		Pct. Change 03 to 07	Pct. Change 06 to 07
	No.	Pct.	No.	Pct.	No.	Pct.	No.	Pct.	No.	Pct.		
Female	3,137	59.8%	3,139	59.5%	3,139	60.0%	3,088	59.5%	3,222	59.7%	2.7%	4.3%
Male	2,105	40.2%	2,139	40.5%	2,094	40.0%	2,100	40.5%	2,171	40.3%	3.1%	3.4%
<b>Total</b>	<b>5,242</b>		<b>5,278</b>		<b>5,233</b>		<b>5,188</b>		<b>5,393</b>		<b>2.9%</b>	<b>4.0%</b>

Graduate Students	Fall 2003		Fall 2004		Fall 2005		Fall 2006		Fall 2007		Pct. Change 03 to 07	Pct. Change 06 to 07
	No.	Pct.	No.	Pct.	No.	Pct.	No.	Pct.	No.	Pct.		
Female	244	62.7%	251	74.0%	245	80.3%	240	77.2%	235	76.1%	-3.7%	-2.1%
Male	145	37.3%	88	26.0%	60	19.7%	71	22.8%	74	23.9%	-49.0%	4.2%
<b>Total</b>	<b>389</b>		<b>339</b>		<b>305</b>		<b>311</b>		<b>309</b>		<b>-20.6%</b>	<b>-0.6%</b>

All Students	Fall 2003		Fall 2004		Fall 2005		Fall 2006		Fall 2007		Pct. Change 03 to 07	Pct. Change 06 to 07
	No.	Pct.	No.	Pct.	No.	Pct.	No.	Pct.	No.	Pct.		
Female	3,381	60.0%	3,390	60.4%	3,384	61.1%	3,328	60.5%	3,457	60.6%	2.2%	3.9%
Male	2,250	40.0%	2,227	39.6%	2,154	38.9%	2,171	39.5%	2,245	39.4%	-0.2%	3.4%
<b>Total</b>	<b>5,631</b>		<b>5,617</b>		<b>5,538</b>		<b>5,499</b>		<b>5,702</b>		<b>1.3%</b>	<b>3.7%</b>



**ENROLLMENT BY ETHNICITY, FALL 2003 TO FALL 2007**

Undergraduate Students	Fall 2003		Fall 2004		Fall 2005		Fall 2006		Fall 2007		Pct. Change 03 to 07	Pct. Change 06 to 07
	No.	Pct.	No.	Pct.	No.	Pct.	No.	Pct.	No.	Pct.		
American Indian/Nat. Al.	18	0.3%	18	0.3%	18	0.3%	16	0.3%	16	0.3%	-11.1%	0.0%
Asian/Pacific Islander	268	5.1%	278	5.3%	261	5.0%	257	5.0%	265	4.9%	-1.1%	3.1%
Black, non-Hispanic	353	6.7%	349	6.6%	354	6.8%	332	6.4%	338	6.3%	-4.2%	1.8%
Hispanic	395	7.5%	418	7.9%	417	8.0%	431	8.3%	469	8.7%	18.7%	8.8%
White, non-Hispanic	4,208	80.3%	4,215	79.9%	4,183	79.9%	4,152	80.0%	4,305	79.8%	2.3%	3.7%
Missing	0	N/A	0	N/A	0	N/A	0	N/A	0	N/A	N/A	N/A
<b>Total</b>	<b>5,242</b>		<b>5,278</b>		<b>5,233</b>		<b>5,188</b>		<b>5,393</b>		<b>2.9%</b>	<b>4.0%</b>

Graduate Students	Fall 2003		Fall 2004		Fall 2005		Fall 2006		Fall 2007		Pct. Change 03 to 07	Pct. Change 06 to 07
	No.	Pct.	No.	Pct.	No.	Pct.	No.	Pct.	No.	Pct.		
American Indian/Nat. Al.	0	0.0%	1	0.3%	0	0.0%	0	0.0%	0	0.0%	N/A	N/A
Asian/Pacific Islander	13	3.3%	4	1.2%	9	3.0%	12	3.9%	7	2.3%	-46.2%	-41.7%
Black, non-Hispanic	10	2.6%	15	4.4%	11	3.6%	18	5.8%	16	5.2%	60.0%	-11.1%
Hispanic	13	3.3%	12	3.5%	7	2.3%	7	2.3%	11	3.6%	-15.4%	57.1%
White, non-Hispanic	353	90.7%	307	90.6%	278	91.1%	274	88.1%	275	89.0%	-22.1%	0.4%
Missing	0	N/A	0	N/A	0	N/A	0	N/A	0	N/A	N/A	N/A
<b>Total</b>	<b>389</b>		<b>339</b>		<b>305</b>		<b>311</b>		<b>309</b>		<b>-20.6%</b>	<b>-0.6%</b>

All Students	Fall 2003		Fall 2004		Fall 2005		Fall 2006		Fall 2007		Pct. Change 03 to 07	Pct. Change 06 to 07
	No.	Pct.	No.	Pct.	No.	Pct.	No.	Pct.	No.	Pct.		
American Indian/Nat. Al.	18	0.3%	19	0.3%	18	0.3%	16	0.3%	16	0.3%	-11.1%	0.0%
Asian/Pacific Islander	281	5.0%	282	5.0%	270	4.9%	269	4.9%	272	4.8%	-3.2%	1.1%
Black, non-Hispanic	363	6.4%	364	6.5%	365	6.6%	350	6.4%	354	6.2%	-2.5%	1.1%
Hispanic	408	7.2%	430	7.7%	424	7.7%	438	8.0%	480	8.4%	17.6%	9.6%
White, non-Hispanic	4,561	81.0%	4,522	80.5%	4,461	80.6%	4,426	80.5%	4,580	80.3%	0.4%	3.5%
Missing	0	N/A	0	N/A	0	N/A	0	N/A	0	N/A	N/A	N/A
<b>Total</b>	<b>5,631</b>		<b>5,617</b>		<b>5,538</b>		<b>5,499</b>		<b>5,702</b>		<b>1.3%</b>	<b>3.7%</b>



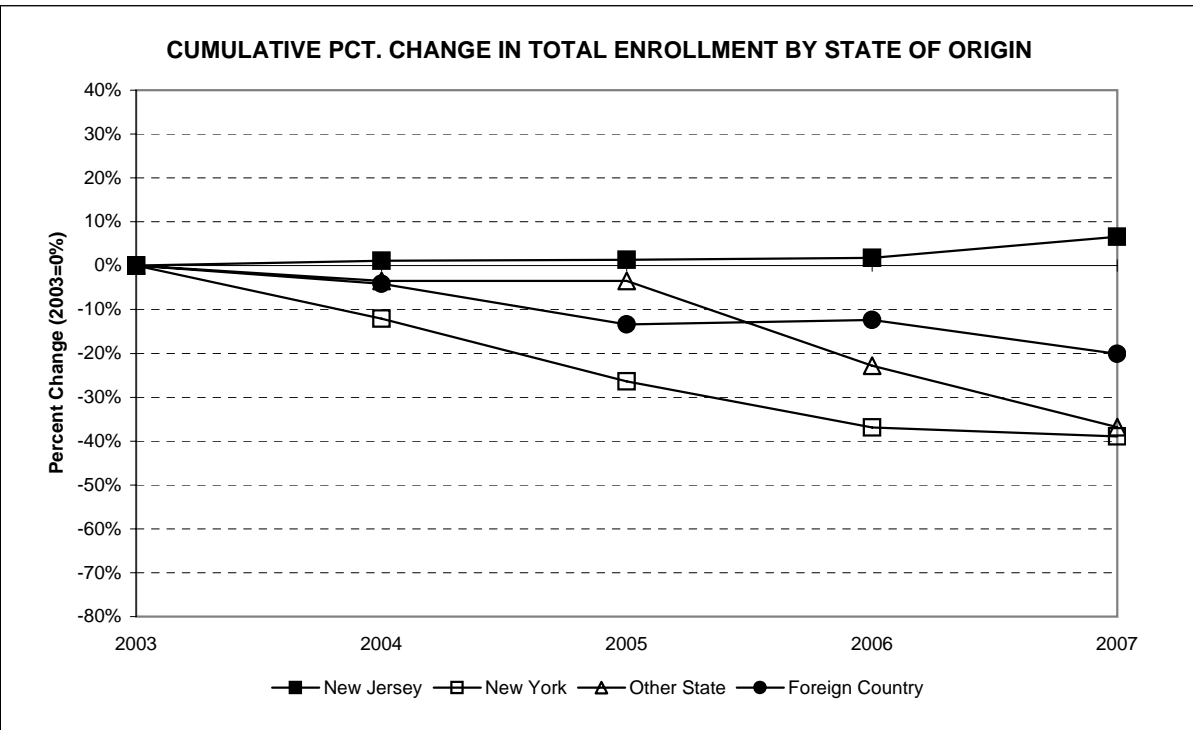
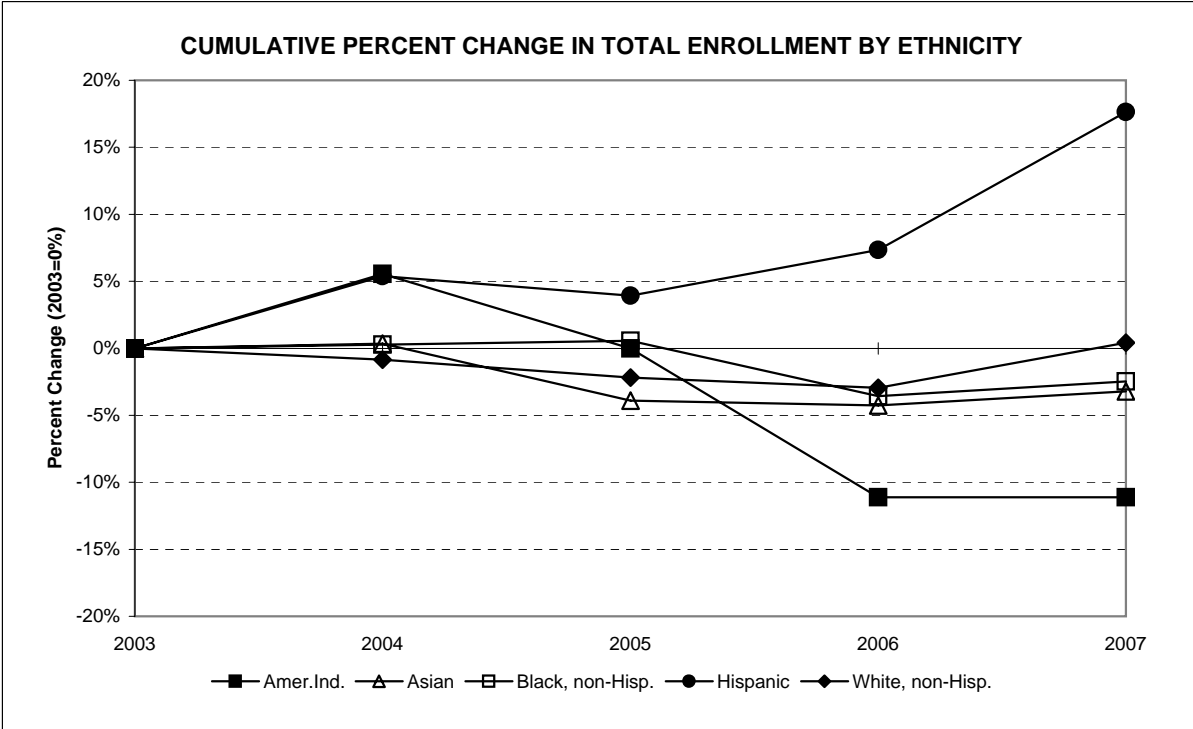
**ENROLLMENT BY STATE OF ORIGIN, FALL 2003 TO FALL 2007**

Undergraduate Students	Fall 2003		Fall 2004		Fall 2005		Fall 2006		Fall 2007		Pct. Change 03 to 07	Pct. Change 06 to 07
	No.	Pct.	No.	Pct.	No.	Pct.	No.	Pct.	No.	Pct.		
New Jersey	4,536	86.5%	4,625	87.6%	4,668	89.2%	4,686	90.3%	4,918	91.2%	8.4%	5.0%
New York	472	9.0%	420	8.0%	350	6.7%	294	5.7%	291	5.4%	-38.3%	-1.0%
Other U.S. State/Terr.	56	1.1%	55	1.0%	53	1.0%	42	0.8%	33	0.6%	-41.1%	-21.4%
Foreign Country	178	3.4%	178	3.4%	162	3.1%	166	3.2%	149	2.8%	-16.3%	-10.2%
Missing	0	N/A	0	N/A	0	N/A	0	N/A	2	N/A	N/A	N/A
<b>Total</b>	<b>5,242</b>		<b>5,278</b>		<b>5,233</b>		<b>5,188</b>		<b>5,393</b>		<b>2.9%</b>	<b>4.0%</b>

Graduate Students	Fall 2003		Fall 2004		Fall 2005		Fall 2006		Fall 2007		Pct. Change 03 to 07	Pct. Change 06 to 07
	No.	Pct.	No.	Pct.	No.	Pct.	No.	Pct.	No.	Pct.		
New Jersey	348	89.5%	315	92.9%	282	92.5%	286	92.0%	288	93.2%	-17.2%	0.7%
New York	24	6.2%	16	4.7%	15	4.9%	19	6.1%	12	3.9%	-50.0%	-36.8%
Other U.S. State/Terr.	1	0.3%	0	0.0%	2	0.7%	2	0.6%	3	1.0%	200.0%	50.0%
Foreign Country	16	4.1%	8	2.4%	6	2.0%	4	1.3%	6	1.9%	-62.5%	N/A
Missing	0	N/A	0	N/A	0	N/A	0	N/A	0	N/A	N/A	N/A
<b>Total</b>	<b>389</b>		<b>339</b>		<b>305</b>		<b>311</b>		<b>309</b>		<b>-20.6%</b>	<b>-0.6%</b>

All Students	Fall 2003		Fall 2004		Fall 2005		Fall 2006		Fall 2007		Pct. Change 03 to 07	Pct. Change 06 to 07
	No.	Pct.	No.	Pct.	No.	Pct.	No.	Pct.	No.	Pct.		
New Jersey	4,884	86.7%	4,940	87.9%	4,950	89.4%	4,972	90.4%	5,206	91.3%	6.6%	4.7%
New York	496	8.8%	436	7.8%	365	6.6%	313	5.7%	303	5.3%	-38.9%	-3.2%
Other U.S. State/Terr.	57	1.0%	55	1.0%	55	1.0%	44	0.8%	36	0.6%	-36.8%	-18.2%
Foreign Country	194	3.4%	186	3.3%	168	3.0%	170	3.1%	155	2.7%	-20.1%	-8.8%
Missing	0	N/A	0	N/A	0	N/A	0	N/A	2	N/A	N/A	N/A
<b>Total</b>	<b>5,631</b>		<b>5,617</b>		<b>5,538</b>		<b>5,499</b>		<b>5,702</b>		<b>1.3%</b>	<b>3.7%</b>





**ENROLLMENT BY ETHNICITY AND CITIZENSHIP, FALL 2003 TO FALL 2007**

Undergraduate Students	Fall 2003		Fall 2004		Fall 2005		Fall 2006		Fall 2007		Pct. Change 03 to 07	Pct. Change 06 to 07
	No.	Pct.	No.	Pct.	No.	Pct.	No.	Pct.	No.	Pct.		
American Indian/Nat. Al.	18	0.3%	18	0.3%	18	0.3%	16	0.3%	16	0.3%	-11.1%	0.0%
Asian/Pacific Islander	200	3.8%	214	4.1%	219	4.2%	219	4.2%	229	4.2%	14.5%	4.6%
Black, non-Hispanic	328	6.3%	320	6.1%	326	6.2%	307	5.9%	314	5.8%	-4.3%	2.3%
Hispanic	388	7.4%	408	7.7%	408	7.8%	419	8.1%	462	8.6%	19.1%	10.3%
White, non-Hispanic	4,111	78.4%	4,118	78.0%	4,104	78.4%	4,061	78.3%	4,223	78.3%	2.7%	4.0%
Nonresident Alien	197	3.8%	200	3.8%	158	3.0%	166	3.2%	149	2.8%	-24.4%	-10.2%
Missing	0	N/A	0	N/A	0	N/A	0	N/A	0	N/A	N/A	N/A
<b>Total</b>	<b>5,242</b>		<b>5,278</b>		<b>5,233</b>		<b>5,188</b>		<b>5,393</b>		<b>2.9%</b>	<b>4.0%</b>

Graduate Students	Fall 2003		Fall 2004		Fall 2005		Fall 2006		Fall 2007		Pct. Change 03 to 07	Pct. Change 06 to 07
	No.	Pct.	No.	Pct.	No.	Pct.	No.	Pct.	No.	Pct.		
American Indian/Nat. Al.	0	0.0%	1	0.3%	0	0.0%	0	0.0%	0	0.0%	N/A	N/A
Asian/Pacific Islander	9	2.3%	3	0.9%	8	2.6%	11	3.5%	6	1.9%	-33.3%	-45.5%
Black, non-Hispanic	7	1.8%	15	4.4%	10	3.3%	18	5.8%	16	5.2%	128.6%	-11.1%
Hispanic	13	3.3%	12	3.5%	7	2.3%	7	2.3%	11	3.6%	-15.4%	57.1%
White, non-Hispanic	344	88.4%	302	89.1%	276	90.5%	271	87.1%	270	87.4%	-21.5%	-0.4%
Nonresident Alien	16	4.1%	6	1.8%	4	1.3%	4	1.3%	6	1.9%	-62.5%	50.0%
Missing	0	N/A	0	N/A	0	N/A	0	N/A	0	N/A	N/A	N/A
<b>Total</b>	<b>389</b>		<b>339</b>		<b>305</b>		<b>311</b>		<b>309</b>		<b>-20.6%</b>	<b>-0.6%</b>

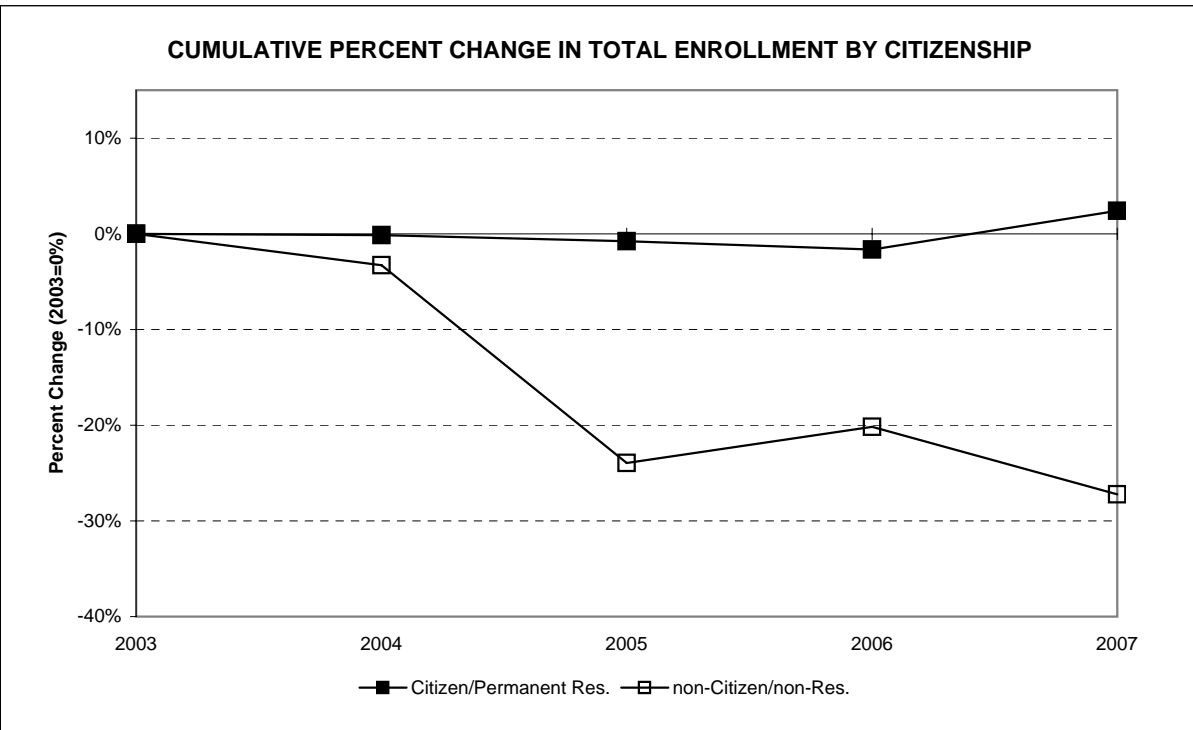
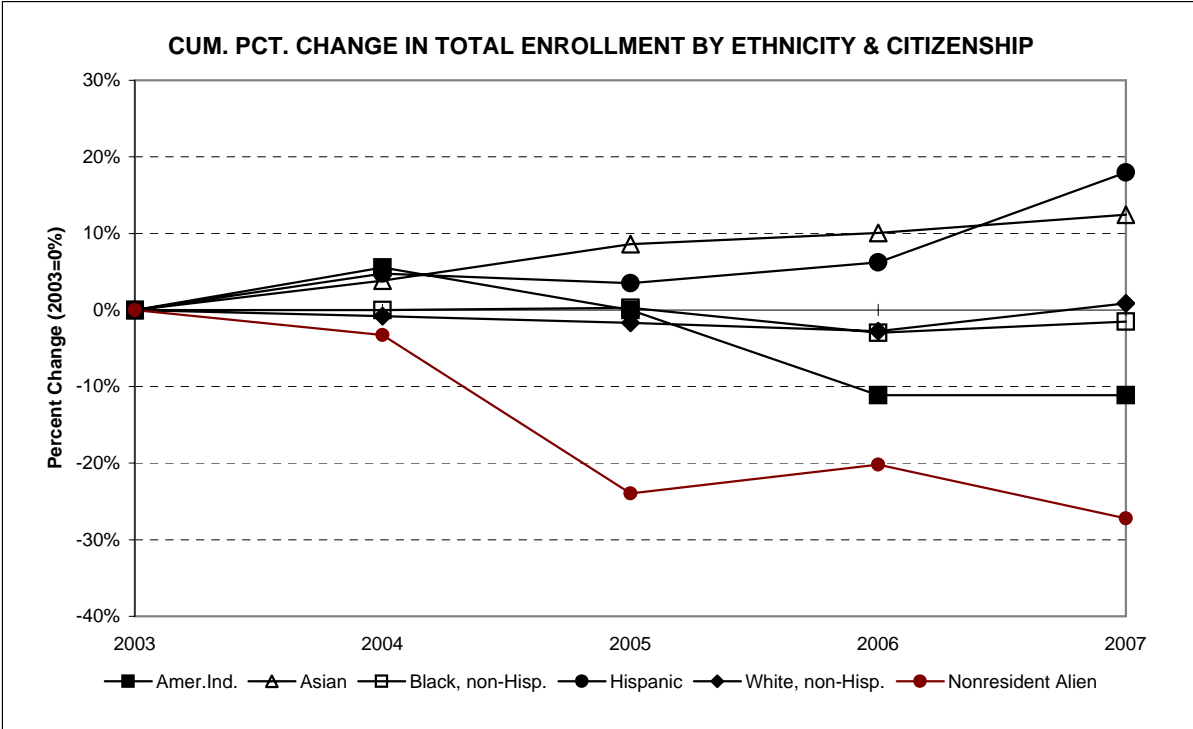
All Students	Fall 2003		Fall 2004		Fall 2005		Fall 2006		Fall 2007		Pct. Change 03 to 07	Pct. Change 06 to 07
	No.	Pct.	No.	Pct.	No.	Pct.	No.	Pct.	No.	Pct.		
American Indian/Nat. Al.	18	0.3%	19	0.3%	18	0.3%	16	0.3%	16	0.3%	-11.1%	0.0%
Asian/Pacific Islander	209	3.7%	217	3.9%	227	4.1%	230	4.2%	235	4.1%	12.4%	2.2%
Black, non-Hispanic	335	5.9%	335	6.0%	336	6.1%	325	5.9%	330	5.8%	-1.5%	1.5%
Hispanic	401	7.1%	420	7.5%	415	7.5%	426	7.7%	473	8.3%	18.0%	11.0%
White, non-Hispanic	4,455	79.1%	4,420	78.7%	4,380	79.1%	4,332	78.8%	4,493	78.8%	0.9%	3.7%
Nonresident Alien	213	3.8%	206	3.7%	162	2.9%	170	3.1%	155	2.7%	-27.2%	-8.8%
Missing	0	N/A	0	N/A	0	N/A	0	N/A	0	N/A	N/A	N/A
<b>Total</b>	<b>5,631</b>		<b>5,617</b>		<b>5,538</b>		<b>5,499</b>		<b>5,702</b>		<b>1.3%</b>	<b>3.7%</b>

**ENROLLMENT BY CITIZENSHIP, FALL 2003 TO FALL 2007**

Undergraduate Students	Fall 2003		Fall 2004		Fall 2005		Fall 2006		Fall 2007		Pct. Change 03 to 07	Pct. Change 06 to 07
	No.	Pct.	No.	Pct.	No.	Pct.	No.	Pct.	No.	Pct.		
Citizen/Permanent Res.	5,045	96.2%	5,078	96.2%	5,075	97.0%	5,022	96.8%	5,244	97.2%	3.9%	4.4%
non-Citizen/non-Res.	197	3.8%	200	3.8%	158	3.0%	166	3.2%	149	2.8%	-24.4%	-10.2%
<b>Total</b>	<b>5,242</b>		<b>5,278</b>		<b>5,233</b>		<b>5,188</b>		<b>5,393</b>		<b>2.9%</b>	<b>4.0%</b>

Graduate Students	Fall 2003		Fall 2004		Fall 2005		Fall 2006		Fall 2007		Pct. Change 03 to 07	Pct. Change 06 to 07
	No.	Pct.	No.	Pct.	No.	Pct.	No.	Pct.	No.	Pct.		
Citizen/Permanent Res.	373	95.9%	333	98.2%	301	98.7%	307	98.7%	303	98.1%	-18.8%	-1.3%
non-Citizen/non-Res.	16	4.1%	6	1.8%	4	1.3%	4	1.3%	6	1.9%	-62.5%	50.0%
<b>Total</b>	<b>389</b>		<b>339</b>		<b>305</b>		<b>311</b>		<b>309</b>		<b>-20.6%</b>	<b>-0.6%</b>

All Students	Fall 2003		Fall 2004		Fall 2005		Fall 2006		Fall 2007		Pct. Change 03 to 07	Pct. Change 06 to 07
	No.	Pct.	No.	Pct.	No.	Pct.	No.	Pct.	No.	Pct.		
Citizen/Permanent Res.	5,418	96.2%	5,411	96.3%	5,376	97.1%	5,329	96.9%	5,547	97.3%	2.4%	4.1%
non-Citizen/non-Res.	213	3.8%	206	3.7%	162	2.9%	170	3.1%	155	2.7%	-27.2%	-8.8%
<b>Total</b>	<b>5,631</b>		<b>5,617</b>		<b>5,538</b>		<b>5,499</b>		<b>5,702</b>		<b>1.3%</b>	<b>3.7%</b>



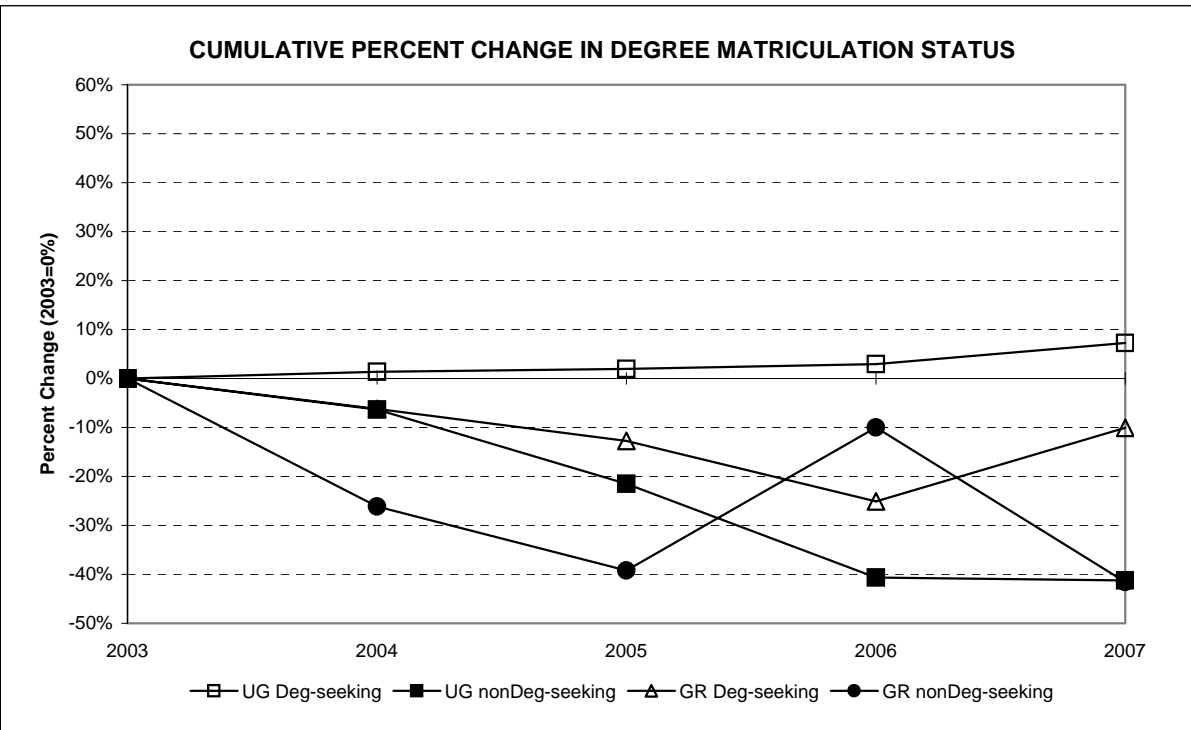
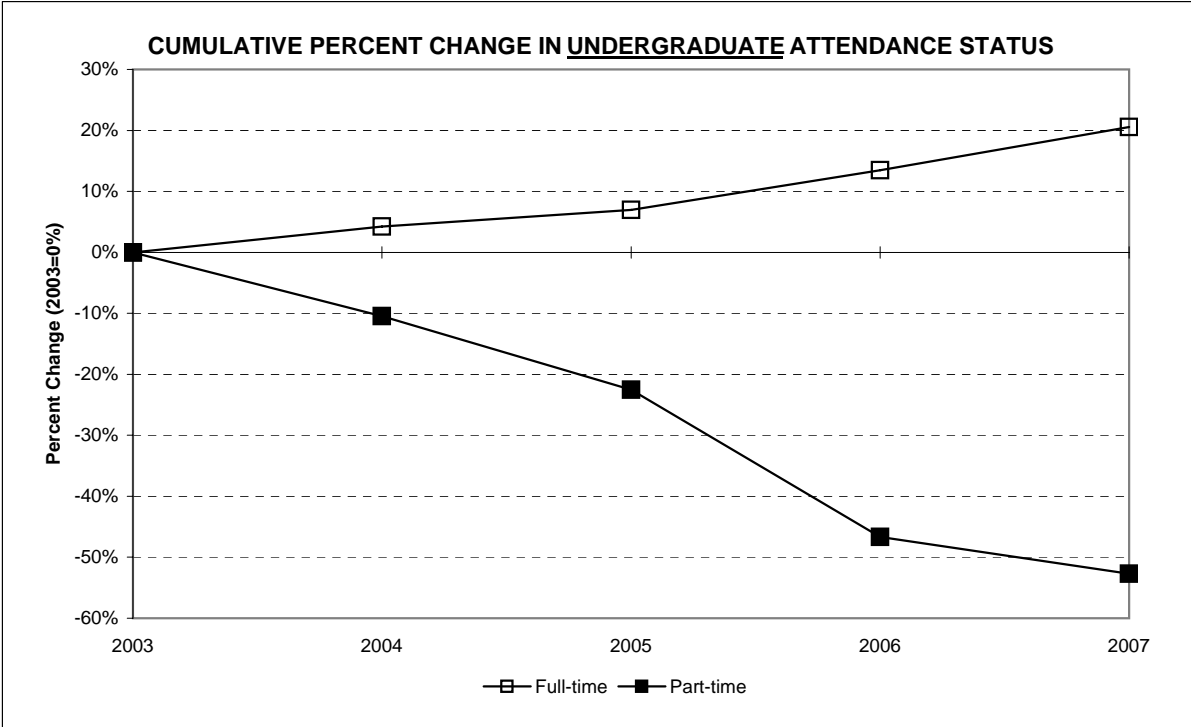
**ENROLLMENT BY ATTENDANCE STATUS, FALL 2003 TO FALL 2007**

	Fall 2003		Fall 2004		Fall 2005		Fall 2006		Fall 2007		Pct. Change 03 to 07	Pct. Change 06 to 07
	No.	Pct.	No.	Pct.	No.	Pct.	No.	Pct.	No.	Pct.		
<b>Undergraduate Students</b>												
Full-time	3,978	75.9%	4,146	78.6%	4,254	81.3%	4,514	87.0%	4,795	88.9%	20.5%	6.2%
Part-time	1,264	24.1%	1,132	21.4%	979	18.7%	674	13.0%	598	11.1%	-52.7%	-11.3%
<b>Total</b>	<b>5,242</b>		<b>5,278</b>		<b>5,233</b>		<b>5,188</b>		<b>5,393</b>		<b>2.9%</b>	<b>4.0%</b>
<b>Graduate Students</b>												
Full-time	19	4.9%	16	4.7%	13	4.3%	5	1.6%	6	1.9%	-68.4%	20.0%
Part-time	370	95.1%	323	95.3%	292	95.7%	306	98.4%	303	98.1%	-18.1%	-1.0%
<b>Total</b>	<b>389</b>		<b>339</b>		<b>305</b>		<b>311</b>		<b>309</b>		<b>-20.6%</b>	<b>-0.6%</b>
<b>All Students</b>												
Full-time	3,997	71.0%	4,162	74.1%	4,267	77.0%	4,519	82.2%	4,801	84.2%	20.1%	6.2%
Part-time	1,634	29.0%	1,455	25.9%	1,271	23.0%	980	17.8%	901	15.8%	-44.9%	-8.1%
<b>Total</b>	<b>5,631</b>		<b>5,617</b>		<b>5,538</b>		<b>5,499</b>		<b>5,702</b>		<b>1.3%</b>	<b>3.7%</b>



**ENROLLMENT BY MATRICULATION STATUS, FALL 2003 TO FALL 2007**

	Fall 2003		Fall 2004		Fall 2005		Fall 2006		Fall 2007		Pct. Change 03 to 07	Pct. Change 06 to 07
	No.	Pct.	No.	Pct.	No.	Pct.	No.	Pct.	No.	Pct.		
<b>Undergraduate Students</b>												
Degree-seeking	4,767	90.9%	4,833	91.6%	4,860	92.9%	4,906	94.6%	5,114	94.8%	7.3%	4.2%
Nondegree-seeking	475	9.1%	445	8.4%	373	7.1%	282	5.4%	279	5.2%	-41.3%	-1.1%
<b>Total</b>	<b>5,242</b>		<b>5,278</b>		<b>5,233</b>		<b>5,188</b>		<b>5,393</b>		<b>2.9%</b>	<b>4.0%</b>
<b>Graduate Students</b>												
Degree-seeking	259	66.6%	243	71.7%	226	74.1%	194	62.4%	233	75.4%	-10.0%	20.1%
Nondegree-seeking	130	33.4%	96	28.3%	79	25.9%	117	37.6%	76	24.6%	-41.5%	-35.0%
<b>Total</b>	<b>389</b>		<b>339</b>		<b>305</b>		<b>311</b>		<b>309</b>		<b>-20.6%</b>	<b>-0.6%</b>
<b>All Students</b>												
Degree-seeking	5,026	89.3%	5,076	90.4%	5,086	91.8%	5,100	92.7%	5,347	93.8%	6.4%	4.8%
Nondegree-seeking	605	10.7%	541	9.6%	452	8.2%	399	7.3%	355	6.2%	-41.3%	-11.0%
<b>Total</b>	<b>5,631</b>		<b>5,617</b>		<b>5,538</b>		<b>5,499</b>		<b>5,702</b>		<b>1.3%</b>	<b>3.7%</b>



**ENROLLMENT BY VETERAN STATUS, FALL 2003 TO FALL 2007**

All Students	Fall 2003		Fall 2004		Fall 2005		Fall 2006		Fall 2007		Pct. Change 03 to 07	Pct. Change 06 to 07
	No.	Pct.	No.	Pct.	No.	Pct.	No.	Pct.	No.	Pct.		
Veteran	36	0.6%	29	0.5%	29	0.5%	11	0.2%	24	0.4%	-33.3%	118.2%
Depend of Dec'd. Vet.	3	0.1%	1	0.0%	1	0.0%	0	0.0%	0	0.0%	N/A	N/A
Non-Veteran	5,592	99.3%	5,587	99.5%	5,508	99.5%	5,488	99.8%	5,678	99.6%	1.5%	3.5%
<b>Total</b>	<b>5,631</b>		<b>5,617</b>		<b>5,538</b>		<b>5,499</b>		<b>5,702</b>		<b>1.3%</b>	<b>3.7%</b>

**ENROLLMENT BY DISABILITY STATUS, FALL 2003 TO FALL 2007**

All Students	Fall 2003		Fall 2004		Fall 2005		Fall 2006		Fall 2007		Pct. Change 03 to 07	Pct. Change 06 to 07
	No.	Pct.	No.	Pct.	No.	Pct.	No.	Pct.	No.	Pct.		
Disabled	200	3.6%	198	3.5%	184	3.3%	198	3.6%	231	4.1%	15.5%	16.7%
Not Disabled	5,431	96.4%	5,419	96.5%	5,354	96.7%	5,301	96.4%	5,471	95.9%	0.7%	3.2%
Missing	0	N/A	0	N/A	0	N/A	0	N/A	0	N/A	N/A	N/A
<b>Total</b>	<b>5,631</b>		<b>5,617</b>		<b>5,538</b>		<b>5,499</b>		<b>5,702</b>		<b>1.3%</b>	<b>3.7%</b>

**UNDERGRADUATE ENROLLMENT BY CLASS RANK, FALL 2003 TO FALL 2007**

Undergraduate Students	Fall 2003		Fall 2004		Fall 2005		Fall 2006		Fall 2007		Pct. Change 03 to 07	Pct. Change 06 to 07
	No.	Pct.	No.	Pct.	No.	Pct.	No.	Pct.	No.	Pct.		
Freshmen	1,026	21.5%	1,031	21.3%	1,014	20.9%	1,263	25.7%	1,369	26.8%	33.4%	8.4%
Sophomores	973	20.4%	963	19.9%	967	19.9%	1,137	23.2%	1,141	22.3%	17.3%	0.4%
Juniors	1,200	25.2%	1,227	25.4%	1,223	25.2%	1,351	27.5%	1,365	26.7%	13.8%	1.0%
Seniors	1,568	32.9%	1,612	33.4%	1,656	34.1%	1,155	23.5%	1,239	24.2%	-21.0%	7.3%
Unclassified/nonDeg.	475	N/A	445	N/A	373	N/A	282	N/A	279	N/A	N/A	N/A
<b>Total</b>	<b>5,242</b>		<b>5,278</b>		<b>5,233</b>		<b>5,188</b>		<b>5,393</b>		<b>2.9%</b>	<b>4.0%</b>

**UNDERGRADUATE ENROLLMENT BY SPECIAL PROGRAM STATUS, FALL 2003 TO FALL 2007**

Undergraduate Students	Fall 2003		Fall 2004		Fall 2005		Fall 2006		Fall 2007		Pct. Change 03 to 07	Pct. Change 06 to 07
	No.	Pct.	No.	Pct.	No.	Pct.	No.	Pct.	No.	Pct.		
EOF	299	5.7%	303	5.7%	293	5.6%	307	5.9%	302	5.6%	1.0%	-1.6%
EOF Honor's Program	2	0.0%	2	0.0%	0	0.0%	0	0.0%	1	0.0%	-50.0%	N/A
Honor's Program	32	0.6%	54	1.0%	50	1.0%	98	1.9%	146	2.7%	356.3%	49.0%
No Spec. Prog. Desig.	4,909	93.6%	4,919	93.2%	4,890	93.4%	4,783	92.2%	4,944	91.7%	0.7%	3.4%
<b>Total</b>	<b>5,242</b>		<b>5,278</b>		<b>5,233</b>		<b>5,188</b>		<b>5,393</b>		<b>2.9%</b>	<b>4.0%</b>

TOTAL FALL 2007 ENROLLMENT = 5,702

All Students	Fall 2003		Fall 2004		Fall 2005		Fall 2006 <sup>[1]</sup>		Fall 2007		Pct. Change	Pct. Change
	No.	Pct.	No.	Pct.	No.	Pct.	No.	Pct.	No.	Pct.	03 to 07	06 to 07
Atlantic	19	0.3%	19	0.3%	16	0.3%	14	0.3%	13	0.2%	-31.6%	-7.1%
Bergen	2,056	36.5%	2,001	35.6%	1,904	34.4%	1,846	33.6%	1,955	34.3%	-4.9%	5.9%
Burlington	36	0.6%	45	0.8%	43	0.8%	46	0.8%	54	0.9%	50.0%	17.4%
Camden	43	0.8%	42	0.7%	44	0.8%	50	0.9%	47	0.8%	9.3%	-6.0%
Cape May	14	0.2%	9	0.2%	9	0.2%	9	0.2%	12	0.2%	-14.3%	33.3%
Cumberland	3	0.1%	7	0.1%	9	0.2%	11	0.2%	9	0.2%	200.0%	-18.2%
Essex	172	3.1%	164	2.9%	161	2.9%	184	3.3%	194	3.4%	12.8%	5.4%
Gloucester	29	0.5%	37	0.7%	35	0.6%	26	0.5%	29	0.5%	0.0%	11.5%
Hudson	133	2.4%	130	2.3%	133	2.4%	132	2.4%	127	2.2%	-4.5%	-3.8%
Hunterdon	57	1.0%	66	1.2%	65	1.2%	54	1.0%	60	1.1%	5.3%	11.1%
Mercer	26	0.5%	40	0.7%	43	0.8%	52	0.9%	42	0.7%	61.5%	-19.2%
Middlesex	380	6.7%	402	7.2%	418	7.5%	452	8.2%	429	7.5%	12.9%	-5.1%
Monmouth	275	4.9%	305	5.4%	358	6.5%	390	7.1%	432	7.6%	57.1%	10.8%
Morris	288	5.1%	293	5.2%	302	5.5%	318	5.8%	344	6.0%	19.4%	8.2%
Ocean	265	4.7%	260	4.6%	267	4.8%	252	4.6%	236	4.1%	-10.9%	-6.3%
Passaic	641	11.4%	625	11.1%	603	10.9%	585	10.6%	644	11.3%	0.5%	10.1%
Salem	5	0.1%	2	0.0%	1	0.0%	2	0.0%	4	0.1%	-20.0%	100.0%
Somerset	84	1.5%	87	1.5%	99	1.8%	91	1.7%	96	1.7%	14.3%	5.5%
Sussex	169	3.0%	213	3.8%	233	4.2%	256	4.7%	274	4.8%	62.1%	7.0%
Union	129	2.3%	124	2.2%	133	2.4%	130	2.4%	142	2.5%	10.1%	9.2%
Warren	58	1.0%	65	1.2%	73	1.3%	71	1.3%	60	1.1%	3.4%	-15.5%
Orange, NY	92	1.6%	85	1.5%	60	1.1%	89	1.6%	91	1.6%	-1.1%	2.2%
Rockland, NY	321	5.7%	282	5.0%	239	4.3%	174	3.2%	164	2.9%	-48.9%	-5.7%
Westchester, NY	4	0.1%	4	0.1%	7	0.1%	13	0.2%	7	0.1%	75.0%	-46.2%
Out of State/Other	332	5.9%	310	5.5%	283	5.1%	252	4.6%	237	4.2%	-28.6%	-6.0%
Total	5,631		5,617		5,538		5,499		5,702		1.3%	3.7%

[1] Fall 2006 distribution revised on 11/07.

TOTAL FALL 2007 ENROLLMENT = 5,702

Non-Citizen Enrollment by Country of Origin, Fall 2003 to Fall 2007

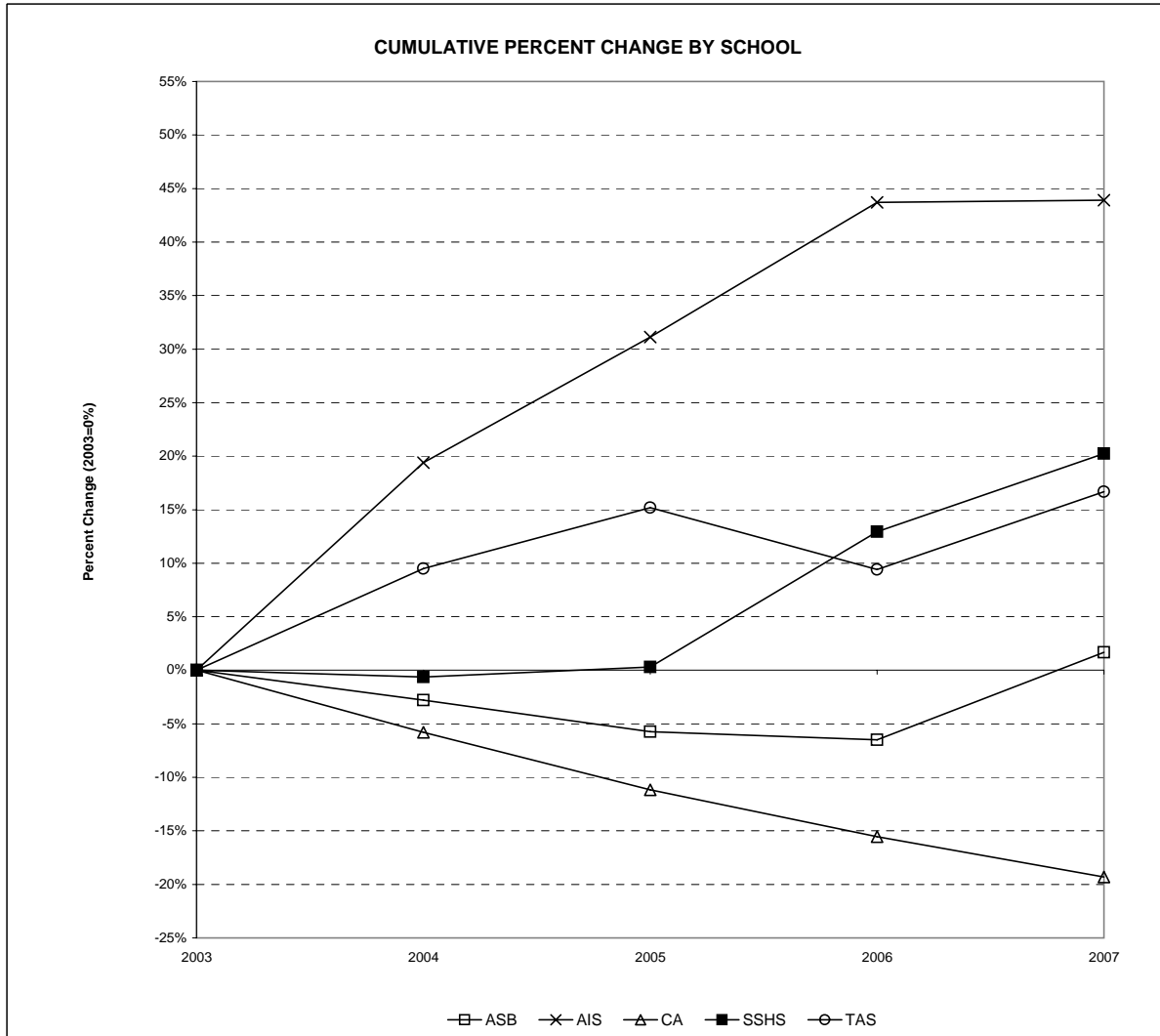
Country	Fall 2003		Fall 2004		Fall 2005		Fall 2006		Fall 2007		Country	Fall 2003		Fall 2004		Fall 2005		Fall 2006		Fall 2007											
	No.	Pct.	No.	Pct.	No.	Pct.	No.	Pct.	No.	Pct.		No.	Pct.	No.	Pct.	No.	Pct.	No.	Pct.	No.	Pct.										
Afghanistan										1	0.6%	Ivory Coast	1	0.5%																	
Albania	1	0.5%	2	1.0%	1	0.6%						2	0.9%	1	0.5%	3	1.9%	3	1.8%	3	1.9%										
Argentina			2	1.0%	2	1.2%	2	1.2%	1	0.6%	Jamaica	2	0.9%	9	4.4%	7	4.3%	8	4.7%	4	2.6%										
Armenia										1	0.6%	Japan	11	5.2%			1	0.6%													
Austria			2	1.0%					1	0.6%	Kampuchea					3	1.9%	3	1.8%	5	3.2%										
Bahamas	4	1.9%	6	2.9%	7	4.3%	6	3.5%	4	2.6%	Kenya	8	3.8%	5	2.4%																
Bahrain							2	1.2%	1	0.6%	Lebanon										1	0.6%									
Bangladesh	2	0.9%					1	0.6%	1	0.6%	Liberia	1	0.5%																		
Bolivia	1	0.5%									Lithuania	1	0.5%																		
Bosnia-Herzegovinia	1	0.5%	1	0.5%							(FYRO) Macedonia	4	1.9%	1	0.5%	1	0.6%				2	1.3%									
Brazil	2	0.9%	2	1.0%	6	3.7%	5	2.9%	3	1.9%	Malaysia	4	1.9%	2	1.0%	2	1.2%														
British Virgin Islands	1	0.5%	1	0.5%							Mauritius	1	0.5%	2	1.0%	2	1.2%	1	0.6%	1	0.6%										
Bulgaria	30	14.1%	35	17.0%	30	18.5%	38	22.4%	38	24.5%	Mexico	1	0.5%	4	1.9%																
Burma	1	0.5%									Moldova							1	0.6%												
Cambodia			1	0.5%			1	0.6%			Mongolia	2	0.9%	2	1.0%	2	1.2%	1	0.6%	1	0.6%										
Canada	4	1.9%	3	1.5%	2	1.2%	2	1.2%	1	0.6%	Morocco	1	0.5%	1	0.5%			1	0.6%	1	0.6%										
Taiwan (China, Nationalist)	4	1.9%	2	1.0%	1	0.6%					Nepal	3	1.4%	1	0.5%	2	1.2%	1	0.6%												
China, People's Republic	4	1.9%	4	1.9%	1	0.6%	1	0.6%	2	1.3%	Netherlands	1	0.5%	1	0.5%			1	0.6%												
Colombia	2	0.9%	1	0.5%	1	0.6%	1	0.6%	1	0.6%	Nigeria	3	1.4%	6	2.9%	6	3.7%	4	2.4%	6	3.9%										
Costa Rica							1	0.6%			Norway	1	0.5%																		
Croatia			1	0.5%	2	1.2%	2	1.2%	2	1.3%	Pakistan	7	3.3%	9	4.4%	5	3.1%	3	1.8%	3	1.9%										
Cyprus	1	0.5%								Panama	1	0.5%			2	1.2%	1	0.6%													
Czech Republic	1	0.5%	2	1.0%						Peru	1	0.5%	2	1.0%	2	1.2%	2	1.2%	1	0.6%											
Denmark					1	0.6%				Philippines	3	1.4%	2	1.0%	1	0.6%	2	1.2%	3	1.9%											
Dominican Republic			2	1.0%	1	0.6%				Poland	8	3.8%	10	4.9%	7	4.3%	9	5.3%	6	3.9%											
Ecuador					1	0.6%	1	0.6%		Portugal	1	0.5%	1	0.5%	1	0.6%															
Egypt	2	0.9%	2	1.0%	1	0.6%			1	0.6%	Romania			1	0.5%	2	1.2%	2	1.2%	2	1.3%										
El Salvador							1	0.6%	1	0.6%	Russia	4	1.9%	3	1.5%	3	1.9%	7	4.1%	4	2.6%										
Estonia	3	1.4%	2	1.0%	1	0.6%	1	0.6%	1	0.6%	St. Vincent/Gren.	1	0.5%	1	0.5%			1	0.6%	1	0.6%										
Ethiopia	2	0.9%	1	0.5%	1	0.6%	2	1.2%	1	0.6%	Slovak Republic	1	0.5%	1	0.5%	1	0.6%	1	0.6%	1	0.6%										
Fiji										South Africa	6	2.8%	3	1.5%	1	0.6%	2	1.2%	1	0.6%											
France	2	0.9%	3	1.5%	2	1.2%	2	1.2%	1	0.6%	South Korea	15	7.0%	14	6.8%	6	3.7%	11	6.5%	10	6.5%										
Germany	12	5.6%	6	2.9%	6	3.7%	11	6.5%	5	3.2%	Spain					1	0.6%	2	1.2%	1	0.6%										
Ghana	1	0.5%	1	0.5%	2	1.2%				Sri Lanka	2	0.9%	2	1.0%	1	0.6%	1	0.6%	1	0.6%											
Guyana			1	0.5%	1	0.6%				Sweden	3	1.4%	2	1.0%	2	1.2%	1	0.6%													
Haiti			1	0.5%					1	0.6%	Switzerland	2	0.9%	2	1.0%	1	0.6%														
Hong Kong	1	0.5%	1	0.5%	1	0.6%				Tanzania	2	0.9%	3	1.5%	2	1.2%	1	0.6%	1	0.6%											
Hungary	1	0.5%	2	1.0%	2	1.2%			1	0.6%	Trinidad & Tobago	1	0.5%	4	1.9%	6	3.7%	7	4.1%	9	5.8%										
Iceland	1	0.5%								Turkey	4	1.9%	2	1.0%	1	0.6%					2										
India	7	3.3%	10	4.9%	7	4.3%	4	2.4%	6	3.9%	Uganda					1	0.6%	1	0.6%												
Indonesia	2	0.9%					1		1	0.6%	Ukraine	2	0.9%	3	1.5%	1	0.6%	1	0.6%												
Iran									1	0.6%	United Kingdom	1	0.5%																		
Iraq							2		2	1.3%	Venezuela	1	0.5%	1	0.5%																
Israel	1	0.5%			1	0.6%	2	1.2%	3	1.9%	Yugoslavia	7	3.3%	7	3.4%	3	1.9%	2	1.2%	1	0.6%										
Italy					1	0.6%			2	1.3%	Zambia	1	0.5%	1	0.5%	1	0.6%														
											<b>TOTAL</b>	213		206		162		170		155											



TOTAL FALL 2007 ENROLLMENT = 5,702

**MATRICULATED UNDERGRADUATE ENROLLMENT BY SCHOOL, FALL 2003 TO FALL 2007**

Schools	Fall 2003		Fall 2004		Fall 2005		Fall 2006		Fall 2007		Percent Change 03 to 07	Percent Change 06 to 07
	No.	Pct.	No.	Pct.	No.	Pct.	No.	Pct.	No.	Pct.		
Anisfield School of Business	1,188	24.9%	1,155	23.9%	1,120	23.0%	1,111	22.6%	1,208	23.6%	1.7%	8.7%
American & Int'l Studies	469	9.8%	560	11.6%	615	12.7%	674	13.7%	675	13.2%	43.9%	0.1%
Contemporary Arts	932	19.6%	878	18.2%	828	17.0%	787	16.0%	752	14.7%	-19.3%	-4.4%
Soc. Science & Human Services	959	20.1%	953	19.7%	962	19.8%	1,083	22.1%	1,153	22.5%	20.2%	6.5%
Theoretical & Applied Science	1,020	21.4%	1,117	23.1%	1,175	24.2%	1,116	22.7%	1,190	23.3%	16.7%	6.6%
School Undecided	199	4.2%	170	3.5%	160	3.3%	135	2.8%	136	2.7%	-31.7%	0.7%
<b>Total</b>	<b>4,767</b>		<b>4,833</b>		<b>4,860</b>		<b>4,906</b>		<b>5,114</b>		<b>7.3%</b>	<b>4.2%</b>



TOTAL FALL 2007 ENROLLMENT = 5,702

MATRICULATED UNDERGRADUATE ENROLLMENT BY SCHOOL AND MAJOR, FALL 2003 TO FALL 2007

Majors	Fall 2003		Fall 2004		Fall 2005		Fall 2006		Fall 2007		Percent Change 03 to 07	Percent Change 06 to 07
	No.	Pct.	No.	Pct.	No.	Pct.	No.	Pct.	No.	Pct.		
<b>ASB</b> Accounting	180	3.8%	202	4.2%	232	4.8%	205	4.2%	204	4.0%	13.3%	-0.5%
Business Administration	581	12.2%	549	11.4%	570	11.7%	575	11.7%	636	12.4%	9.5%	10.6%
Economics	36	0.8%	35	0.7%	25	0.5%	32	0.7%	32	0.6%	-11.1%	0.0%
Information Systems	168	3.5%	138	2.9%	92	1.9%	74	1.5%	73	1.4%	-56.5%	-1.4%
International Business	81	1.7%	89	1.8%	63	1.3%	70	1.4%	71	1.4%	-12.3%	1.4%
Undecided Major	142	3.0%	142	2.9%	138	2.8%	155	3.2%	192	3.8%	35.2%	23.9%
<b>AIS</b> American Studies	16	0.3%	17	0.4%	24	0.5%	33	0.7%	30	0.6%	87.5%	-9.1%
History	112	2.3%	129	2.7%	152	3.1%	237	4.8%	233	4.6%	108.0%	-1.7%
International Studies	43	0.9%	49	1.0%	44	0.9%	53	1.1%	59	1.2%	37.2%	11.3%
Law and Society	51	1.1%	50	1.0%	46	0.9%	1	0.0%	-	-	N/A	N/A
Literature	174	3.7%	210	4.3%	205	4.2%	218	4.4%	208	4.1%	19.5%	-4.6%
Political Science	48	1.0%	71	1.5%	90	1.9%	72	1.5%	77	1.5%	60.4%	6.9%
Spanish	-	-	5	0.1%	18	0.4%	24	0.5%	22	0.4%	N/A	-8.3%
Undecided Major	25	0.5%	29	0.6%	36	0.7%	36	0.7%	46	0.9%	84.0%	27.8%
<b>CA</b> Communication Arts	549	11.5%	514	10.6%	485	10.0%	443	9.0%	391	7.6%	-28.8%	-11.7%
Contemporary Arts	54	1.1%	63	1.3%	67	1.4%	86	1.8%	66	1.3%	22.2%	-23.3%
Music	48	1.0%	44	0.9%	47	1.0%	62	1.3%	71	1.4%	47.9%	14.5%
Theater	79	1.7%	60	1.2%	52	1.1%	41	0.8%	54	1.1%	-31.6%	31.7%
Visual Arts	99	2.1%	123	2.5%	109	2.2%	111	2.3%	122	2.4%	23.2%	9.9%
Undecided Major	103	2.2%	74	1.5%	68	1.4%	44	0.9%	48	0.9%	-53.4%	9.1%
<b>SSHS</b> Economics <sup>[1]</sup>	4	0.1%	7	0.1%	3	0.1%	-	-	-	-	N/A	N/A
Environmental Studies	9	0.2%	10	0.2%	10	0.2%	40	0.8%	40	0.8%	344.4%	0.0%
History <sup>[1]</sup>	32	0.7%	43	0.9%	48	1.0%	-	-	-	-	N/A	N/A
Law and Society	140	2.9%	158	3.3%	166	3.4%	213	4.3%	192	3.8%	37.1%	-9.9%
Political Science	1	0.0%	0	0.0%	0	0.0%	-	-	-	-	N/A	N/A
Psychology	479	10.0%	433	9.0%	413	8.5%	532	10.8%	584	11.4%	21.9%	9.8%
Social Science	26	0.5%	20	0.4%	25	0.5%	19	0.4%	24	0.5%	-7.7%	26.3%
Social Work	101	2.1%	118	2.4%	114	2.3%	113	2.3%	119	2.3%	17.8%	5.3%
Sociology	54	1.1%	62	1.3%	62	1.3%	51	1.0%	58	1.1%	7.4%	13.7%
Undecided Major	113	2.4%	102	2.1%	121	2.5%	115	2.3%	136	2.7%	20.4%	18.3%
<b>TAS</b> Allied Health	3	0.1%	9	0.2%	16	0.3%	10	0.2%	14	0.3%	366.7%	40.0%
Biochemistry	18	0.4%	22	0.5%	25	0.5%	43	0.9%	43	0.8%	138.9%	0.0%
Bioinformatics	11	0.2%	18	0.4%	20	0.4%	19	0.4%	12	0.2%	9.1%	-36.8%
Biology	182	3.8%	208	4.3%	255	5.2%	290	5.9%	340	6.6%	86.8%	17.2%
Chemistry	21	0.4%	21	0.4%	21	0.4%	24	0.5%	19	0.4%	-9.5%	-20.8%
Clinical Lab Sciences	4	0.1%	6	0.1%	8	0.2%	11	0.2%	9	0.2%	125.0%	-18.2%
Computer Science	145	3.0%	118	2.4%	90	1.9%	76	1.5%	67	1.3%	-53.8%	-11.8%
Environmental Science	24	0.5%	21	0.4%	24	0.5%	28	0.6%	42	0.8%	75.0%	50.0%
Environmental Studies <sup>[1]</sup>	32	0.7%	40	0.8%	33	0.7%	-	-	-	-	N/A	N/A
Integrated Science	-	-	3	0.1%	9	0.2%	13	0.3%	12	0.2%	N/A	-7.7%
Mathematics	71	1.5%	85	1.8%	100	2.1%	112	2.3%	110	2.2%	54.9%	-1.8%
Nursing	339	7.1%	372	7.7%	367	7.6%	388	7.9%	407	8.0%	20.1%	4.9%
Engineering Physics	10	0.2%	19	0.4%	24	0.5%	14	0.3%	18	0.4%	80.0%	28.6%
Psychology <sup>[1]</sup>	97	2.0%	100	2.1%	110	2.3%	-	-	-	-	N/A	N/A
Undecided Major	63	1.3%	75	1.6%	73	1.5%	88	1.8%	97	1.9%	54.0%	10.2%
School & Major Undecided	199	4.2%	170	3.5%	160	3.3%	135	2.8%	136	2.7%	-31.7%	0.7%
<b>Total</b>	<b>4,767</b>		<b>4,833</b>		<b>4,860</b>		<b>4,906</b>		<b>5,114</b>		<b>7.3%</b>	<b>4.2%</b>

[1] The domicile of certain majors changed in Fall 2006. Economics is now exclusive to ASB. Law & Society is now exclusive to SSHS. Political Science and History are now majors exclusive to AIS. Environmental Studies and Psychology are now majors exclusive to SSHS.

TOTAL FALL 2007 ENROLLMENT = 5,702

MATRICULATED UNDERGRADUATE ENROLLMENT BY MAJOR, FALL 2003 TO FALL 2007

Majors	Fall 2003		Fall 2004		Fall 2005		Fall 2006		Fall 2007		Percent Change 03 to 07	Percent Change 06 to 07
	No.	Pct.	No.	Pct.	No.	Pct.	No.	Pct.	No.	Pct.		
Accounting	180	4.6%	202	5.0%	232	5.7%	205	4.9%	204	4.8%	13.3%	-0.5%
Allied Health	3	0.1%	9	0.2%	16	0.4%	10	0.2%	14	0.3%	366.7%	40.0%
American Studies	16	0.4%	17	0.4%	24	0.6%	33	0.8%	30	0.7%	87.5%	-9.1%
Biochemistry	18	0.5%	22	0.5%	25	0.6%	43	1.0%	43	1.0%	138.9%	0.0%
Bioinformatics	11	0.3%	18	0.4%	20	0.5%	19	0.5%	12	0.3%	9.1%	-36.8%
Biology	182	4.6%	208	5.1%	255	6.2%	290	7.0%	340	8.0%	86.8%	17.2%
Business Administration	581	14.7%	549	13.5%	570	14.0%	575	13.8%	636	14.9%	9.5%	10.6%
Chemistry	21	0.5%	21	0.5%	21	0.5%	24	0.6%	19	0.4%	-9.5%	-20.8%
Clinical Lab Sciences	4	0.1%	6	0.1%	8	0.2%	11	0.3%	9	0.2%	125.0%	-18.2%
Communication Arts	549	13.9%	514	12.7%	485	11.9%	443	10.7%	391	9.2%	-28.8%	-11.7%
Computer Science	145	3.7%	118	2.9%	90	2.2%	76	1.8%	67	1.6%	-53.8%	-11.8%
Contemporary Arts	54	1.4%	63	1.6%	67	1.6%	86	2.1%	66	1.5%	22.2%	-23.3%
Economics [1]	40	1.0%	42	1.0%	28	0.7%	32	0.8%	32	0.8%	-20.0%	0.0%
Engineering Physics	10	0.3%	19	0.5%	24	0.6%	14	0.3%	18	0.4%	80.0%	28.6%
Environmental Science	24	0.6%	21	0.5%	24	0.6%	28	0.7%	42	1.0%	75.0%	50.0%
Environmental Studies [2]	41	1.0%	50	1.2%	43	1.1%	40	1.0%	40	0.9%	-2.4%	0.0%
History [3]	144	3.7%	172	4.2%	200	4.9%	237	5.7%	233	5.5%	61.8%	-1.7%
Information Systems	168	4.3%	138	3.4%	92	2.3%	74	1.8%	73	1.7%	-56.5%	-1.4%
Integrated Science	--	--	3	0.1%	9	0.2%	13	0.3%	12	0.3%	N/A	-7.7%
International Business	81	2.1%	89	2.2%	63	1.5%	70	1.7%	71	1.7%	-12.3%	1.4%
International Studies	43	1.1%	49	1.2%	44	1.1%	53	1.3%	59	1.4%	37.2%	11.3%
Law and Society [4]	191	4.8%	208	5.1%	212	5.2%	214	5.1%	192	4.5%	0.5%	-10.3%
Literature	174	4.4%	210	5.2%	205	5.0%	218	5.2%	208	4.9%	19.5%	-4.6%
Mathematics	71	1.8%	85	2.1%	100	2.4%	112	2.7%	110	2.6%	54.9%	-1.8%
Music	48	1.2%	44	1.1%	47	1.2%	62	1.5%	71	1.7%	47.9%	14.5%
Nursing	339	8.6%	372	9.2%	367	9.0%	388	9.3%	407	9.6%	20.1%	4.9%
Political Science [5]	49	1.2%	71	1.8%	90	2.2%	72	1.7%	77	1.8%	57.1%	6.9%
Psychology [6]	576	14.6%	533	13.2%	523	12.8%	532	12.8%	584	13.7%	1.4%	9.8%
Social Science	26	0.7%	20	0.5%	25	0.6%	19	0.5%	24	0.6%	-7.7%	26.3%
Social Work	101	2.6%	118	2.9%	114	2.8%	113	2.7%	119	2.8%	17.8%	5.3%
Sociology	54	1.4%	62	1.5%	62	1.5%	51	1.2%	58	1.4%	7.4%	13.7%
Spanish	--	--	5	0.1%	18	0.4%	24	0.6%	22	0.5%	N/A	-8.3%
Theater	79	2.0%	60	1.5%	52	1.3%	41	1.0%	54	1.3%	-31.6%	31.7%
Visual Arts	99	2.5%	123	3.0%	109	2.7%	111	2.7%	122	2.9%	23.2%	9.9%
Undecided Major	645	N/A	592	N/A	596	N/A	573	N/A	655	N/A	1.6%	N/A
Total	4,767		4,833		4,860		4,906		5,114		7.3%	4.2%

[1] Prior to fall 2006, includes students from SB and SSHS.

[2] Prior to fall 2006, includes students from SSHS and TAS.

[3] Prior to fall 2006, includes students from AIS and SSHS.

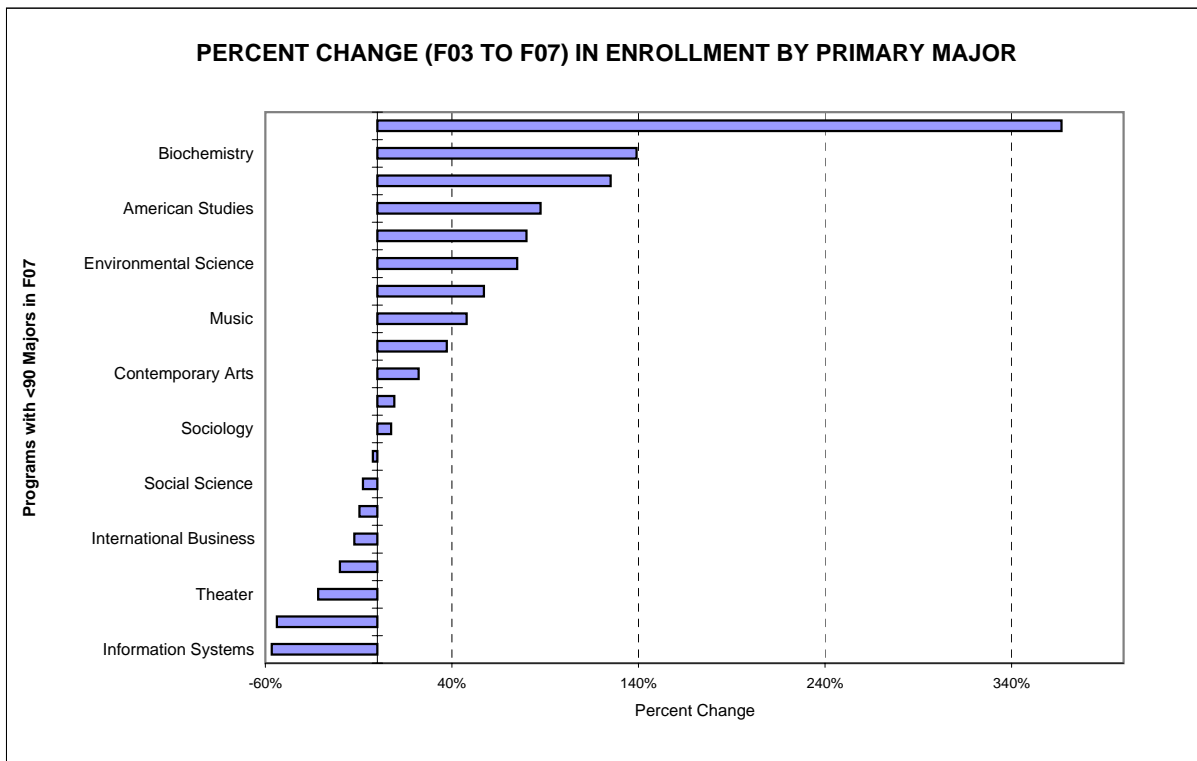
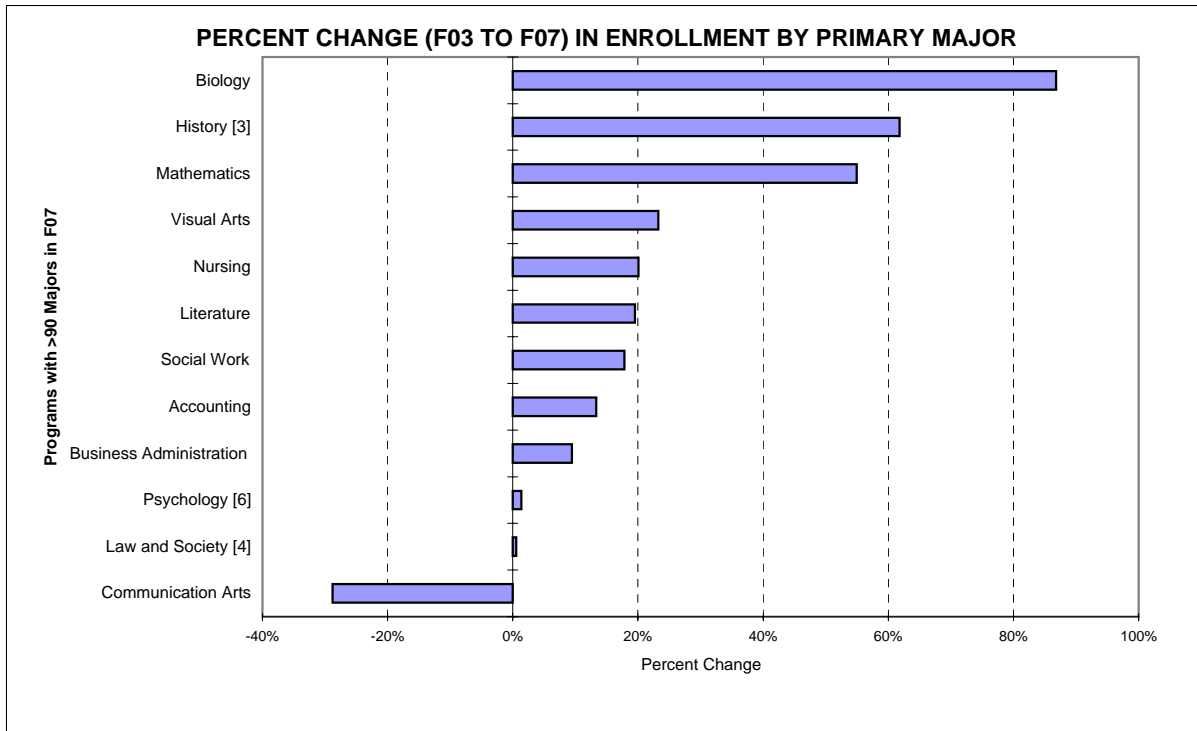
[4] Prior to fall 2006, includes students from AIS and SSHS.

[5] Prior to fall 2006, includes students from AIS and SSHS.

[6] Prior to fall 2006, includes students from SSHS and TAS.

TOTAL FALL 2007 ENROLLMENT = 5,702

MATRICULATED UNDERGRADUATES = 5,114



TOTAL FALL 2007 ENROLLMENT = 5,702

Primary Major and Concentration	Fall 2003		Fall 2004		Fall 2005		Fall 2006		Fall 2007		Percent Change 03 to 07	Percent Change 06 to 07
	No.	% of Maj	No.	% of Maj	No.	% of Maj	No.	% of Maj	No.	% of Maj		
<b>Biology</b>												
Physician's Assistant	--	--	33	15.9%	10	3.9%	11	3.8%	15	4.4%	N/A	36.4%
Physical Therapy	24	13.2%	8	3.8%	38	14.9%	52	17.9%	49	14.4%	104.2%	-5.8%
Chiropractic	--	--	--	--	--	--	1	0.3%	3	0.9%	N/A	200.0%
Dental	--	--	--	--	--	--	6	2.1%	14	4.1%	N/A	133.3%
Optometry	--	--	--	--	--	--	1	0.3%	3	0.9%	N/A	200.0%
Unspecified	158	86.8%	167	80.3%	207	81.2%	219	75.5%	256	75.3%	62.0%	16.9%
<i>Subtotal</i>	<i>182</i>		<i>208</i>		<i>255</i>		<i>290</i>		<i>340</i>		<i>86.8%</i>	<i>17.2%</i>
<b>Business Administration</b>												
Finance	116	63.7%	100	48.1%	117	45.9%	137	47.2%	152	44.7%	31.0%	10.9%
Management	234	128.6%	224	107.7%	237	92.9%	240	82.8%	237	69.7%	1.3%	-1.3%
Marketing	187	102.7%	169	81.3%	154	60.4%	168	57.9%	206	60.6%	10.2%	22.6%
Unspecified	44	24.2%	56	26.9%	62	24.3%	30	10.3%	41	12.1%	-6.8%	36.7%
<i>Subtotal</i>	<i>581</i>		<i>549</i>		<i>570</i>		<i>575</i>		<i>636</i>		<i>9.5%</i>	<i>10.6%</i>
<b>Communication Arts</b>												
Creative Writing	16	2.9%	7	1.4%	1	0.2%	33	7.4%	39	10.0%	143.8%	18.2%
Design & Interactive Media	--	--	--	--	--	--	53	12.0%	58	14.8%	N/A	9.4%
Digital Filmmaking	--	--	--	--	--	--	66	14.9%	46	11.8%	N/A	-30.3%
Graphic Design	63	11.5%	31	6.0%	7	1.4%	3	0.7%	--	--	N/A	N/A
Interdisciplinary	5	0.9%	6	1.2%	1	0.2%	1	0.2%	--	--	N/A	N/A
Journalism	31	5.6%	19	3.7%	6	1.2%	59	13.3%	60	15.3%	93.5%	1.7%
Media & Cinema Studies	--	--	--	--	--	--	102	23.0%	76	19.4%	N/A	-25.5%
Public Communication	67	12.2%	36	7.0%	6	1.2%	--	--	--	--	N/A	N/A
Radio	19	3.5%	7	1.4%	2	0.4%	--	--	--	--	N/A	N/A
TV/Video Production	63	11.5%	33	6.4%	11	2.3%	--	--	--	--	N/A	N/A
Unspecified	285	51.9%	375	73.0%	451	93.0%	126	28.4%	112	28.6%	-60.7%	-11.1%
<i>Subtotal</i>	<i>549</i>		<i>514</i>		<i>485</i>		<i>443</i>		<i>391</i>		<i>-28.8%</i>	<i>-11.7%</i>
<b>Music <sup>[2]</sup></b>												
Music Industry	--	--	--	--	--	--	11	2.8%	16	22.5%	N/A	45.5%
Music Production	--	--	--	--	--	--	6	1.5%	9	12.7%	N/A	50.0%
Music Performance	--	--	--	--	--	--	8	2.1%	3	4.2%	N/A	-62.5%
Music Studies	--	--	--	--	--	--	8	2.1%	3	4.2%	N/A	-62.5%
Unspecified	--	--	--	--	--	--	29	7.5%	40	56.3%	N/A	37.9%
<i>Subtotal</i>	<i>--</i>		<i>--</i>		<i>--</i>		<i>62</i>		<i>71</i>		<i>N/A</i>	<i>14.5%</i>
<b>Nursing</b>												
RN/BSN	122	36.0%	106	28.5%	90	24.5%	97	25.0%	76	18.7%	-37.7%	-21.6%
Generic BSN	217	64.0%	266	71.5%	277	75.5%	291	75.0%	331	81.3%	52.5%	13.7%
<i>Subtotal</i>	<i>339</i>		<i>372</i>		<i>367</i>		<i>388</i>		<i>407</i>		<i>20.1%</i>	<i>4.9%</i>
<b>Social Science</b>												
Africana Studies	--	--	1	5.0%	1	4.0%	2	10.0%	1	4.2%	N/A	-50.0%
Community Mental Health	8	30.8%	3	15.0%	6	24.0%	4	20.0%	4	16.7%	-50.0%	0.0%
Criminology <sup>[1]</sup>	2	7.7%	1	5.0%	1	4.0%	--	--	--	--	N/A	N/A
Cultural Studies	2	7.7%	1	5.0%	1	4.0%	2	10.0%	2	8.3%	0.0%	0.0%
Ethnic Relations	--	0.0%	--	0.0%	--	0.0%	1	5.0%	--	0.0%	N/A	N/A
Gender Studies	1	3.8%	1	5.0%	2	8.0%	1	5.0%	1	4.2%	0.0%	0.0%
Labor Studies	2	7.7%	1	5.0%	0	0.0%	0	0.0%	--	0.0%	N/A	N/A
Unspecified	11	42.3%	12	60.0%	14	56.0%	10	50.0%	16	66.7%	45.5%	60.0%
<i>Subtotal</i>	<i>26</i>		<i>20</i>		<i>25</i>		<i>20</i>		<i>24</i>		<i>-7.7%</i>	<i>20.0%</i>
<b>Theater <sup>[2]</sup></b>												
Acting	--	--	--	--	--	--	16	39.0%	20	37.0%	N/A	25.0%
Design/Technical Theater	--	--	--	--	--	--	3	7.3%	2	3.7%	N/A	-33.3%
Directing/Stage Mgmt.	--	--	--	--	--	--	3	7.3%	3	5.6%	N/A	0.0%
Theater Studies	--	--	--	--	--	--	--	--	1	1.9%	N/A	N/A
Unspecified	--	--	--	--	--	--	19	46.3%	28	51.9%	N/A	47.4%
<i>Subtotal</i>	<i>--</i>		<i>--</i>		<i>--</i>		<i>41</i>		<i>54</i>		<i>N/A</i>	<i>31.7%</i>
<b>Visual Arts <sup>[2]</sup></b>												
Art History	--	--	--	--	--	--	5	4.5%	5	4.1%	N/A	0.0%
Drawing and Painting	--	--	--	--	--	--	30	27.0%	25	20.5%	N/A	-16.7%
New Media	--	--	--	--	--	--	4	3.6%	1	0.8%	N/A	-75.0%
Photography	--	--	--	--	--	--	8	7.2%	6	4.9%	N/A	-25.0%
Sculpture	--	--	--	--	--	--	5	4.5%	3	2.5%	N/A	-40.0%
Unspecified	--	--	--	--	--	--	59	53.2%	82	67.2%	N/A	39.0%
<i>Subtotal</i>	<i>--</i>		<i>--</i>		<i>--</i>		<i>111</i>		<i>122</i>		<i>N/A</i>	<i>9.9%</i>

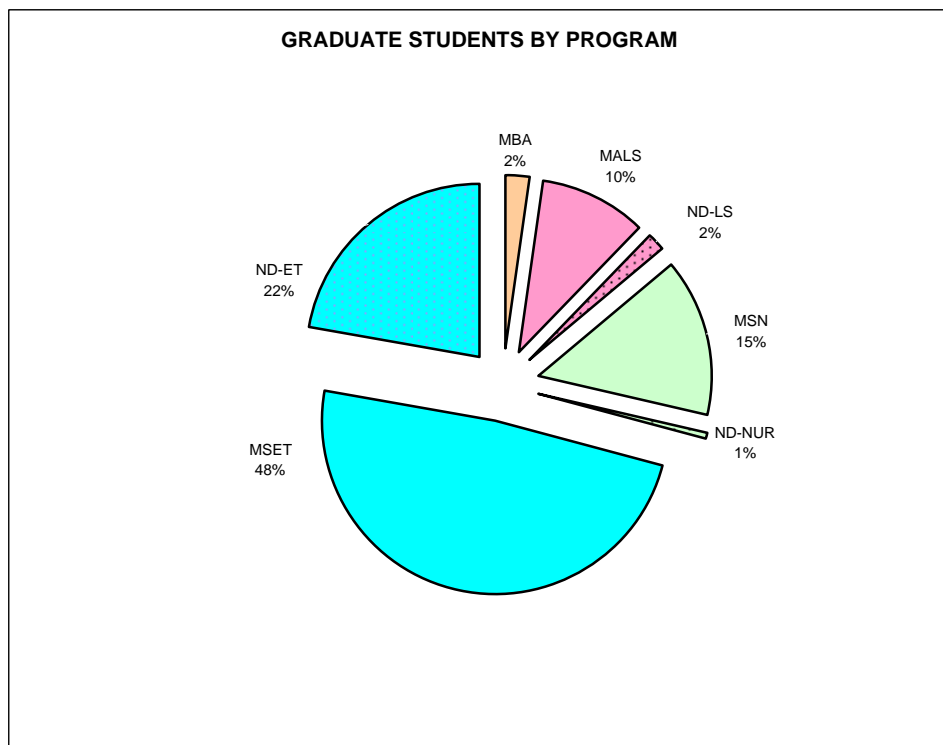
The domicile of certain majors changed in Fall 2006.

[1] The Criminology program is now offered in the major Law and Society (a new major as of fall 2006).

[2] Fine Art concentrations previously included in this table are now majors (Music, Theater, and Visual Arts).

TOTAL FALL 2007 ENROLLMENT = 5,702  
GRADUATE STUDENT ENROLLMENTS BY PROGRAM

Business Administration	7	2.3%
Educational Technology	150	48.5%
Nondegree-seeking: Educational Technology	69	22.3%
Liberal Studies	31	10.0%
Nondegree-seeking: Liberal Studies	5	
Nursing	45	14.6%
Nondegree-seeking: Nursing	<u>2</u>	0.6%
	<b>309</b>	



**GRADUATE ENROLLMENT BY PROGRAM, FALL 2003 TO FALL 2007**

Program	Fall 2003		Fall 2004		Fall 2005		Fall 2006		Fall 2007		Percent Change 03 to 07	Percent Change 06 to 07
	No.	Pct.	No.	Pct.	No.	Pct.	No.	Pct.	No.	Pct.		
Liberal Studies	36	9.3%	32	9.4%	37	12.1%	33	10.6%	31	10.0%	-13.9%	-6.1%
Educational Technology	126	32.4%	142	41.9%	115	37.7%	107	34.4%	150	48.5%	19.0%	40.2%
Business Administration	83	21.3%	54	15.9%	31	10.2%	10	3.2%	7	2.3%	-91.6%	-30.0%
Nursing	14	3.6%	15	4.4%	43	14.1%	44	14.1%	45	14.6%	221.4%	2.3%
Non-degree-seeking	130	33.4%	96	28.3%	79	25.9%	117	37.6%	76	24.6%	-41.5%	-35.0%
Total	389		339		305		311		309		-20.6%	-0.6%



**GRADUATE NONDEGREE-SEEKING STUDENTS BY AFFILIATION, FALL 2003 TO FALL 2007**

Program	Fall 2003		Fall 2004		Fall 2005		Fall 2006		Fall 2007		Percent Change 03 to 07	Percent Change 06 to 07
	No.	Pct.	No.	Pct.	No.	Pct.	No.	Pct.	No.	Pct.		
Nondegree-seeking - Liberal Studies	2	1.5%	2	2.1%	6	7.6%	1	0.9%	5	6.6%	150.0%	400.0%
Nondegree-seeking - Educational Technology	104	80.0%	89	92.7%	70	88.6%	116	99.1%	69	90.8%	-33.7%	-40.5%
Nondegree-seeking - MBA	24	18.5%	5	5.2%	3	3.8%	0	0.0%	0	0.0%	N/A	N/A
Nondegree-seeking - Nursing	0	0.0%	0	0.0%	0	0.0%	0	0.0%	2	2.6%	N/A	N/A
Nondegree-seeking - Affiliation Unspecified	0	0.0%	0	0.0%	0	0.0%	0	0.0%	0	0.0%	N/A	N/A
Total	130		96		79		117		76		-41.5%	-35.0%

**ACADEMIC YEAR HEADCOUNT ENROLLMENT, 2002-03 TO 2006-07**

Semester/Session	2002-03	2003-04	2004-05	2005-06	2006-07	Percent Change 02/03 to 06/07	Percent Change 05/06 to 06/07
	No.	No.	No.	No.	No.		
Fall	5,494	5,631	5,617	5,538	5,499	0.1%	-0.7%
Spring	5,330	5,415	5,403	5,281	5,247	-1.6%	-0.6%
<i>Annualized [1]</i>	<i>5,412</i>	<i>5,523</i>	<i>5,510</i>	<i>5,410</i>	<i>5,373</i>	<i>-0.7%</i>	<i>-0.7%</i>
Summer [2]	1,989	1,901	1,789	1,752	1,634	-17.8%	-6.7%
Winter <sup>[3]</sup>	798	848	651	614	N/A	N/A	N/A
<b>Unduplicated Total [4]</b>	<b>6,862</b>	<b>6,900</b>	<b>6,809</b>	<b>6,671</b>	<b>6,675</b>	<b>-2.7%</b>	<b>0.1%</b>

[1] Calculated by summing the Fall and Spring enrollments and dividing by 2.

[2] Counts are from the summer prior to the academic year so that the 2006-07 academic year covers Summer 2006, Fall 2006, Winter 2007, and Spring 2007.

[3] Winter session is no longer offered. The last Winter semester was Winter 2006.

[4] This is an unduplicated count of the total number of individuals who took at least one course at the College during the academic year.

**ACADEMIC YEAR FTE'S HEADCOUNT ENROLLMENT, 2002-03 TO 2006-07**

Semester/Session	2002-03	2003-04	2004-05	2005-06	2006-07	Percent Change 02/03 to 06/07	Percent Change 05/06 to 06/07
	No.	No.	No.	No.	No.		
Fall	4,352	4,532	4,679	4,733	4,886	12.3%	3.2%
Spring	4,158	4,317	4,403	4,390	4,545	9.3%	3.5%
<i>Annualized [1]</i>	<i>4,255</i>	<i>4,425</i>	<i>4,541</i>	<i>4,562</i>	<i>4,716</i>	<i>10.8%</i>	<i>3.4%</i>
Summer [2]	340	325	298	288	271	-20.3%	-5.9%
Winter <sup>[3]</sup>	94	102	75	73	N/A	N/A	N/A

[1] Calculated by summing the Fall and Spring enrollments and dividing by 2.

[2] Counts are from the summer prior to the academic year so that the 2006-07 academic year covers Summer 2006, Fall 2006, Winter 2007, and Spring 2007.

[3] Winter session is no longer offered. The last Winter semester was Winter 2006.

[4] This is an unduplicated count of the total number of individuals who took at least one course at the College during the academic year.