

SECTION VII:

ADMINISTRATIVE OPERATIONS

2006 INSTITUTIONAL PROFILE

STATEMENT OF REVENUES, EXPENSES AND CHANGES IN NET ASSETS^[1]

YEAR ENDED JUNE 30, 2002 THROUGH JUNE 30, 2006

(dollars in thousands)

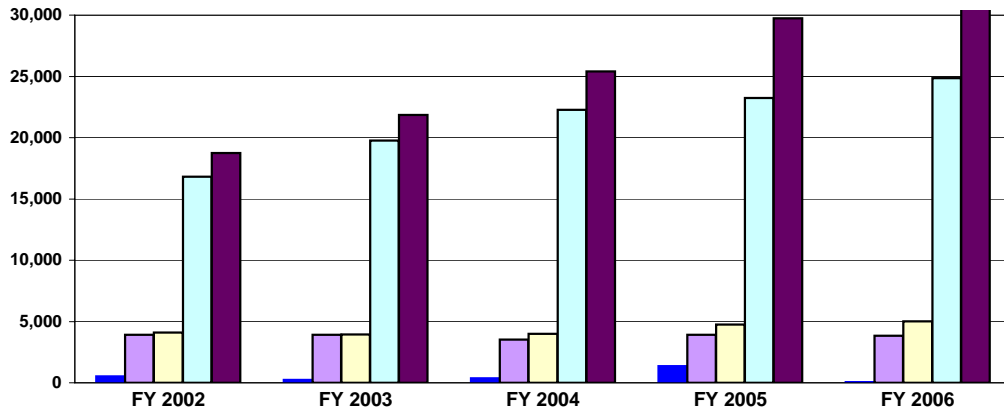
Revenues	\$	\$	\$	\$	\$	% Change	% Change
Operating revenues:	6/30/2002	6/30/03 ^[2]	6/30/2004	6/30/2005	6/30/2006	FY02 to FY06	FY05 to FY06
Student tuition and fees, net	18,746	21,841	25,410	29,746	32,342	72.5%	8.7%
Federal grants and contracts	3,915	3,906	3,521	3,926	3,834	-2.1%	-2.3%
State and local grants/contracts	4,104	3,945	4,004	4,751	5,013	22.1%	5.5%
Auxiliary enterprises	16,816	19,765	22,266	23,234	24,858	47.8%	7.0%
Other	530	225	370	1,348	42	-92.1%	-96.9%
Total operating revenues	44,111	49,682	55,571	63,005	66,089	49.8%	4.9%
Expenses							
Operating expenses:							
Instruction	23,352	24,187	25,296	26,851	28,675	22.8%	6.8%
Academic support	3,508	4,301	4,464	4,756	5,364	52.9%	12.8%
Student services	6,186	7,662	8,232	9,155	9,496	53.5%	3.7%
Institutional support	10,920	12,553	14,351	13,874	15,260	39.7%	10.0%
Student financial aid/scholarships	841	902	702	847	600	-28.7%	-29.2%
Operations and maint.of plant	7,105	8,233	9,395	9,653	11,048	55.5%	14.5%
Depreciation	4,997	5,460	6,576	7,697	8,879	77.7%	15.4%
Auxiliary	11,707	12,351	13,043	13,313	14,475	23.6%	8.7%
Total operating expenses	68,616	75,649	82,059	86,146	93,797	36.7%	8.9%
Operating loss	(24,505)	(25,967)	(26,488)	(23,141)	(27,708)	13.1%	19.7%
Nonoperating revenue (expense):							
State of NJ appropriations	28,206	28,172	28,627	32,430	33,688	19.4%	3.9%
Investment income	937	816	1,306	1,596	2,891	208.5%	81.1%
Interest/asset related debt	(5,496)	(6,868)	(7,560)	(9,025)	(9,658)	75.7%	7.0%
Other nonoperating revenue	31	10,501	226	362	1,111	3483.9%	206.9%
Net nonoperating revenue	23,678	32,621	22,599	25,363	28,032	18.4%	10.5%
Decrease/increase in net assets	(827)	6,654	(3,889)	2,222	324	139.2%	-85.4%
Net assets - begin.of year	54,070	52,394	59,048	55,159	57,381	6.1%	4.0%
Net assets - end of year	53,243	59,048	55,159	57,381	57,705	8.4%	0.6%

[1] Effective for the year beginning July 1, 2001, the College adopted Governmental Accounting Standards Board Statement (GASB) No. 35, Basic Financial Statements and Management's Discussion and Analysis for Public Colleges and Universities.

[2] Restated due to reclassification of Revenue and Expense from Auxiliary to Education & General.

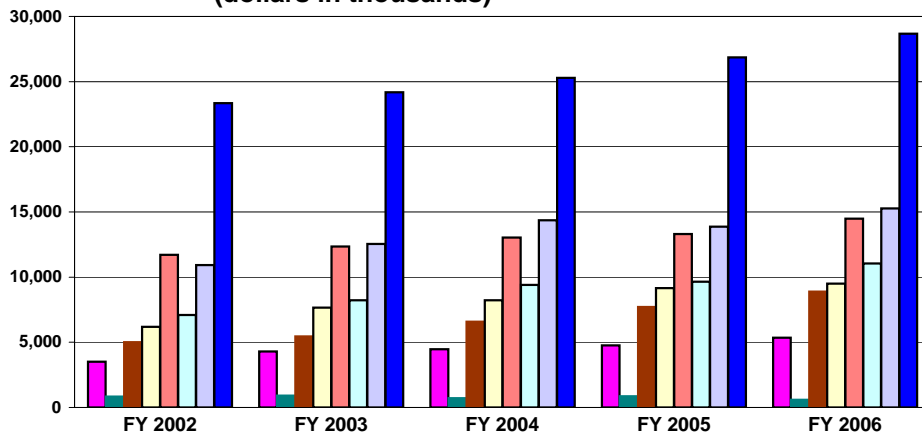
Source: Ramapo College of New Jersey Financial Statements, June 30, 2002, 2003, 2004, 2005, 2006

Statement of Revenues (dollars in thousands)



■ Other	530	225	370	1,348	42
■ Federal Grnt/Cntrct	3,915	3,906	3,521	3,926	3,834
■ State Grnt/Cntrct	4,104	3,945	4,004	4,751	5,013
■ Auxiliary	16,816	19,765	22,266	23,234	24,858
■ Tuition/Fees	18,746	21,841	25,410	29,746	32,343

Statement of Expenditures (dollars in thousands)

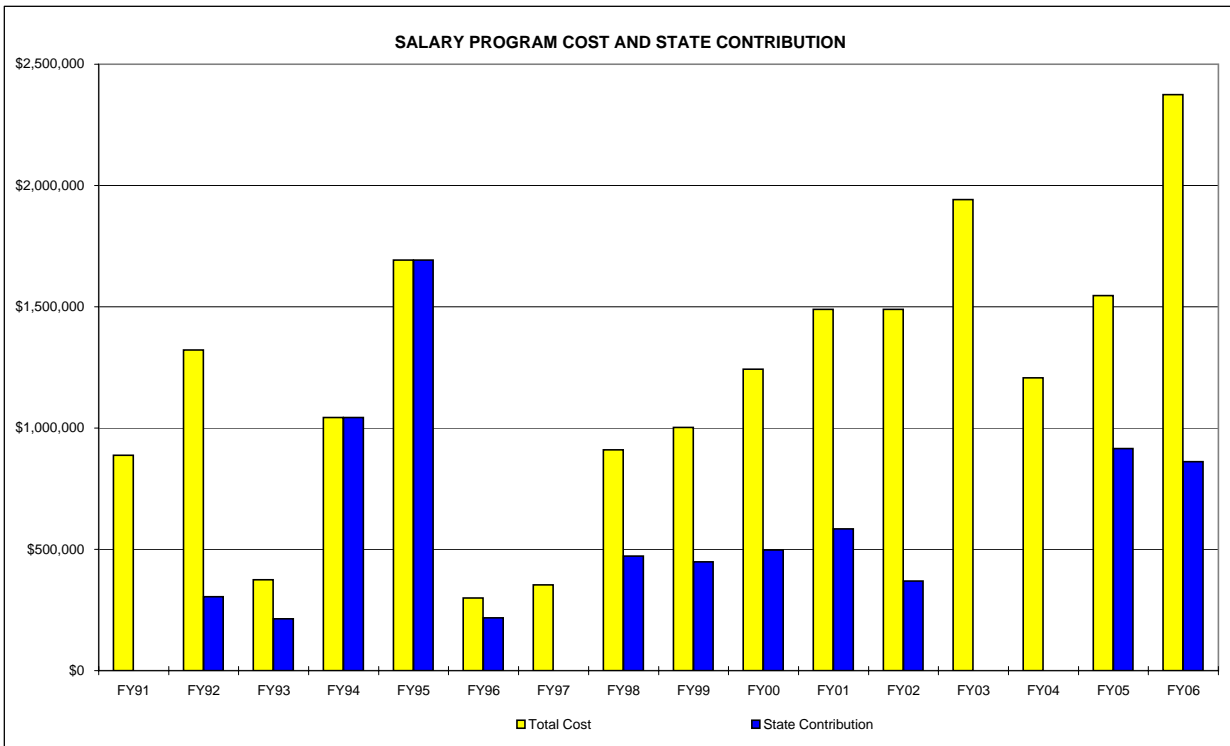


■ Academic Support	3,508	4,301	4,464	4,756	5,364
■ Financial Aid/Scholarships	841	902	702	847	600
■ Depreciation	4,997	5,460	6,576	7,697	8,879
■ Student Services	6,186	7,662	8,232	9,155	9,496
■ Auxiliary	11,707	12,351	13,043	13,313	14,475
■ Oper/Maint. of Plant	7,105	8,233	9,395	9,653	11,048
■ Institutional Support	10,920	12,553	14,351	13,874	15,260
■ Instruction	23,352	24,187	25,296	26,851	28,675

SALARY PROGRAM: COST AND FUNDING^[1]

Fiscal Year	Total Salary Program	Percent Change From Previous Year	Amount Provided by State for Salary Program	
			Dollars	Percent of Total
1988	\$897,826	N/A	\$826,000	92.00%
1989	\$795,433	-11.4%	\$397,000	49.91%
1990	\$790,464	-0.6%	\$197,616	25.00%
1991	\$888,000	12.3%	\$0	0.00%
1992	\$1,321,793	48.9%	\$305,000	23.07%
1993	\$583,785	-55.8%	\$214,000	36.66%
1994	\$1,044,000	78.8%	\$1,044,000	100.00%
1995	\$1,693,000	62.2%	\$1,693,000	100.00%
1996	\$300,025	-82.3%	\$218,000	72.66%
1997	\$353,794	17.9%	\$0	0.00%
1998	\$909,743	157.1%	\$472,000	51.88%
1999	\$982,394	8.0%	\$449,000	45.70%
2000	\$866,000	-11.8%	\$497,000	57.39%
2001	\$1,242,429	43.5%	\$585,000	47.09%
2002	\$1,489,000	19.8%	\$369,500	24.82%
2003	\$1,942,000	30.4%	\$0	0.00%
2004	\$1,206,716	-37.9%	\$0	0.00%
2005	\$1,546,741	28.2%	\$916,000	59.22%
2006	\$2,374,432	53.5%	\$861,000	36.26%

[1] The fiscal year salary program includes any cost-of-living adjustments, step increases, and catch-up costs from the prior year. The expense represents the increase to the continuation salary costs from one year to the next.



TUITION AND FEES^[1]

UNDERGRADUATE

Resident	Academic Year	Academic Year	Academic Year	Academic Year	Academic Year	Percent Change	Percent Change
	2002-03	2003-2004	2004-2005	2005-2006	2006-2007		
	\$	\$	\$	\$	\$	02/03 to 06/07	05/06 to 06/07
<u>Annual (full-time)^[2]</u>							
Tuition	\$4,835.52	\$5,270.00	\$5,640.00	\$6,091.20	\$6,579.20	36.06%	8.01%
Student Activity Fee	\$490.56	\$571.20	\$603.20	\$635.20	\$686.40	39.92%	8.06%
Student Center Fee	\$433.60	\$433.60	\$433.60	\$433.60	\$468.80	8.12%	8.12%
General Service Fee	\$512.00	\$576.00	\$771.84	\$822.40	\$888.00	73.44%	7.98%
Experiential Learning Fee ^[3]	\$70.40	\$80.00	\$84.80	\$89.60	\$96.00	36.36%	7.14%
Media & Technology Fee ^[4]	\$432.00	\$480.00	\$547.20	\$592.00	\$640.00	48.15%	8.11%
Facilities Fee	-	-	-	\$128.00	\$137.60	N/A	7.50%
Total:	\$6,774.08	\$7,410.80	\$8,080.64	\$8,792.00	\$9,496.00	40.18%	8.01%
<u>Per Credit (part-time)</u>							
Tuition	\$151.11	\$164.70	\$176.25	\$190.35	\$205.60	36.06%	8.01%
Student Activity Fee	\$15.33	\$17.85	\$18.85	\$19.85	\$21.45	39.92%	8.06%
Student Center Fee	\$13.55	\$13.55	\$13.55	\$13.55	\$14.65	8.12%	8.12%
General Service Fee	\$16.00	\$18.00	\$24.12	\$25.70	\$27.75	73.44%	7.98%
Experiential Learning Fee ^[3]	\$2.20	\$2.50	\$2.65	\$2.80	\$3.00	36.36%	7.14%
Media & Technology Fee ^[4]	\$13.50	\$15.00	\$17.10	\$18.50	\$20.00	48.15%	8.11%
Facilities Fee	-	-	-	\$4.00	\$4.30	N/A	7.50%
Total:	\$211.69	\$231.60	\$252.52	\$274.75	\$296.75	40.18%	8.01%

Non-Resident	Academic Year	Academic Year	Academic Year	Academic Year	Academic Year	Percent Change	Percent Change
	2002-03	2003-2004	2004-2005	2005-2006	2006-2007		
	\$	\$	\$	\$	\$	02/03 to 06/07	05/06 to 06/07
<u>Annual (full-time)^[2]</u>							
Tuition	\$8,737.92	\$9,524.80	\$10,192.00	\$11,008.00	\$11,889.60	36.07%	8.01%
Student Activity Fee	\$490.56	\$571.20	\$603.20	\$635.20	\$686.40	39.92%	8.06%
Student Center Fee	\$433.60	\$433.60	\$433.60	\$433.60	\$468.80	8.12%	8.12%
General Service Fee	\$512.00	\$576.00	\$771.84	\$822.40	\$888.00	73.44%	7.98%
Experiential Learning Fee ^[3]	\$70.40	\$80.00	\$84.80	\$89.60	\$96.00	36.36%	7.14%
Media & Technology Fee ^[4]	\$432.00	\$480.00	\$547.20	\$592.00	\$640.00	48.15%	8.11%
Facilities Fee	-	-	-	\$128.00	\$137.60	N/A	7.50%
Total:	\$10,676.48	\$11,665.60	\$12,632.64	\$13,708.80	\$14,806.40	38.68%	8.01%
<u>Per Credit (part-time)</u>							
Tuition	\$273.06	\$297.65	\$318.50	\$344.00	\$371.55	36.07%	8.01%
Student Activity Fee	\$15.33	\$17.85	\$18.85	\$19.85	\$21.45	39.92%	8.06%
Student Center Fee	\$13.55	\$13.55	\$13.55	\$13.55	\$14.65	8.12%	8.12%
General Service Fee	\$16.00	\$18.00	\$24.12	\$25.70	\$27.75	73.44%	7.98%
Experiential Learning Fee ^[3]	\$2.20	\$2.50	\$2.65	\$2.80	\$3.00	36.36%	7.14%
Media & Technology Fee ^[4]	\$13.50	\$15.00	\$17.10	\$18.50	\$20.00	48.15%	8.11%
Facilities Fee	-	-	-	\$4.00	\$4.30	N/A	7.50%
Total:	\$333.64	\$364.55	\$394.77	\$428.40	\$462.70	38.68%	8.01%

GRADUATE

Resident	Academic Year	Academic Year	Academic Year	Academic Year	Academic Year	Percent Change	Percent Change
	2002-03	2003-2004	2004-2005	2005-2006	2006-2007		
	\$	\$	\$	\$	\$	02/03 to 06/07	05/06 to 06/07
<u>Per Credit (part-time)</u>							
MALS/GET	\$330.69	\$360.45	\$385.70	\$416.60	\$449.95	36.06%	8.01%
MBA	\$342.41	\$373.25	\$399.40	\$431.35	\$465.85	36.05%	8.00%
Student Activity Fee	\$1.45	\$1.65	\$1.85	\$2.00	\$2.15	48.28%	7.50%
Student Center Fee	\$1.45	\$1.50	\$1.85	\$1.85	\$2.00	37.93%	8.11%
General Service Fee	\$1.59	\$1.70	\$1.85	\$12.30	\$13.30	736.48%	8.13%
Media & Technology Fee ^[4]	\$13.50	\$15.00	\$17.10	\$18.50	\$20.00	48.15%	8.11%
Facilities Fee	-	-	-	\$4.00	\$4.30	N/A	7.50%
MALS/GET Total:	\$348.68	\$380.30	\$408.35	\$455.25	\$491.70	41.02%	8.01%
MBA Total:	\$360.40	\$393.10	\$422.05	\$470.00	\$507.60	40.84%	8.00%
<u>Non-Resident</u>							
<u>Per Credit (part-time)</u>							
MALS/GET	\$425.04	\$463.30	\$495.75	\$535.40	\$578.25	36.05%	8.00%
MBA	\$441.62	\$481.40	\$515.10	\$556.30	\$600.80	36.04%	8.00%
Student Activity Fee	\$1.45	\$1.65	\$1.85	\$2.00	\$2.15	48.28%	7.50%
Student Center Fee	\$1.45	\$1.50	\$1.85	\$1.85	\$2.00	37.93%	8.11%
General Service Fee	\$1.59	\$1.70	\$1.85	\$12.30	\$13.30	736.48%	8.13%
Media & Technology Fee ^[4]	\$13.50	\$15.00	\$17.10	\$18.50	\$20.00	48.15%	8.11%
Facilities Fee	-	-	-	\$4.00	\$4.30	N/A	7.50%
MALS/GET Total:	\$443.03	\$483.15	\$518.40	\$574.05	\$620.00	39.95%	8.00%
MBA Total:	\$459.61	\$501.25	\$537.75	\$594.95	\$642.55	39.80%	8.00%

[1] The fee charges are the same for both resident and non-resident students.

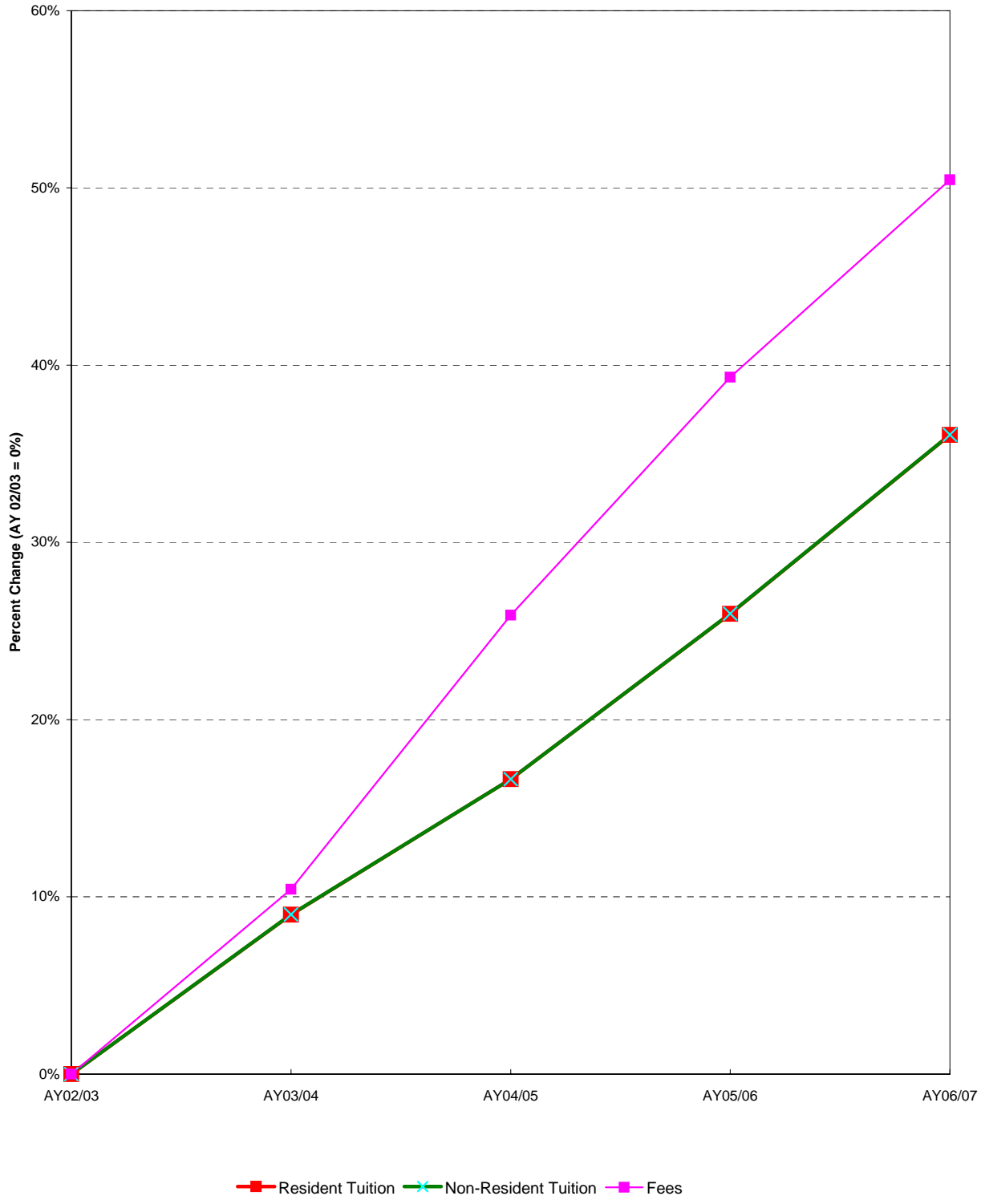
[2] AY 02-03 to AY 05-06, full-time undergraduate students pay on the basis of 16 credits per semester (32 annualized) for 12 to 19 credits, inclusive.

As of Fall 2006, full-time undergraduate students pay on the basis of 16 credits per semester (32 annualized) for 12 to 18 credits, inclusive.

[3] Experiential Learning Fee instated Fall 2000 semester (\$1.00 per credit hour).

[4] M&T fee previously assessed as flat fee. As of Fall 2001 M&T is a tuition related fee calculated on a per credit basis.

CUMULATIVE PERCENT CHANGE IN FULL-TIME TUITION AND FEES



OTHER STUDENT FEES

Resident & Non-Resident	Academic Year	Academic Year	Academic Year	Academic Year	Academic Year	Percent Change 02/03 to 06/07	Percent Change 05/06 to 06/07
	2002-03 \$	2003-04 \$	2004-05 \$	2005-06 \$	2006-07 \$		
Admission Deposit (undergrad) ^[1]	\$100.00	\$100.00	\$100.00	\$100.00	\$100.00	0.0%	0.0%
Admission Deposit (grad)	\$200.00	\$200.00	\$200.00	\$200.00	\$200.00	0.0%	0.0%
Application (undergrad)	\$50.00	\$55.00	\$55.00	\$55.00	\$55.00	10.0%	0.0%
Application (grad)	\$55.00	\$55.00	\$55.00	\$55.00	\$55.00	0.0%	0.0%
Athletic Lab Fees:							
Tennis	\$10.00	\$10.00	\$15.00	\$15.00	\$15.00	50.0%	0.0%
Injury Management	\$15.00	\$15.00	\$20.00	\$20.00	N/A	N/A	N/A
First Aid/CPR	\$35.00	\$35.00	\$40.00	\$40.00	\$40.00	14.3%	0.0%
Scuba Diving	\$135.00	\$135.00	\$140.00	\$140.00	\$140.00	3.7%	0.0%
Golf	\$35.00	\$35.00	\$35.00	\$35.00	\$35.00	0.0%	0.0%
Housing Deposit	\$200.00	\$200.00	\$200.00	\$200.00	\$200.00	0.0%	0.0%
ID Card Replacement	\$15.00	\$15.00	\$15.00	\$15.00	\$15.00	0.0%	0.0%
Laboratory							
1st lab ^[2]	\$50.00	\$50.00	\$50.00	\$50.00	\$50.00	0.0%	0.0%
Each lab thereafter	\$50.00	\$50.00	\$50.00	\$50.00	\$50.00	0.0%	0.0%
Media & Technology ^[3]							
Full-time	(3)	(3)	(3)	(3)	(3)	N/A	N/A
Part-time	(3)	(3)	(3)	(3)	(3)	N/A	N/A
Medical Insurance ^[4]	\$86.00	\$86.00	\$97.00	\$120.00	\$136.00	58.1%	13.3%
Payment Plan - Application Fee (yearly) ^[5]	\$75.00	\$90.00	\$100.00	\$100.00	\$120.00	60.0%	20.0%
Orientation: ^[6]							
Full-time	\$130.00	\$130.00	\$130.00	\$130.00	\$130.00	0.0%	0.0%
Part-time	\$25.00	--	--	--	--	N/A	N/A
Transfers	\$65.00	\$65.00	\$65.00	\$65.00	\$65.00	0.0%	0.0%
Parking Fee:							
Full-time	\$100.00	\$75.00	\$90.00	\$100.00	\$200.00	100.0%	100.0%
Part-time	\$100.00	\$75.00	\$90.00	\$100.00	\$100.00	0.0%	0.0%
Second car decal	\$30.00	\$20.00	\$30.00	\$30.00	\$65.00	116.7%	116.7%
Replacement decal	\$30.00	\$20.00	\$30.00	\$30.00	\$65.00	116.7%	116.7%
Dishonored Check	\$40.00	\$40.00	\$40.00	\$40.00	\$40.00	0.0%	0.0%
Redeposit Check	\$15.00	\$15.00	\$15.00	\$15.00	\$15.00	0.0%	0.0%
Student Teaching Fee	\$125.00	\$125.00	\$200.00	\$200.00	\$200.00	60.0%	0.0%
Teacher Certification Fee	\$75.00	\$75.00	\$175.00	\$175.00	\$175.00	133.3%	0.0%
Official Transcript	\$5.00	\$25.00	\$25.00	\$25.00	\$25.00	400.0%	0.0%

[1] Folded into tuition of students accepted and enrolled: Non-refundable to applicants who do not enroll.

[2] Fee instated 94-95 Academic Year.

[3] Flat fee initially instated 94-95 Academic Year. As of Fall 2001 M&T changed from flat fee to a tuition related fee calculated on a per credit basis.

[4] Above fees are for non-international students. Fees are slightly higher for International students.

[5] Monthly Payment Plan Application Fee for AY 06-07 is \$60 per semester, Fall 06 + Spr 07.

[6] Part-time student orientation fee dropped AY 03-04.

CHARGES FOR STUDENT HOUSING AND MEAL PLANS

Student Housing	Academic Year	Academic Year	Academic Year	Academic Year	Academic Year	Percent Change 02/03 to 06/07	Percent Change 05/06 to 06/07
	2002-03	2003-04	2004-05	2005-06	2006-07		
	\$	\$	\$	\$	\$		
<i>Garden Style Apartments</i>							
2 person/1 bedroom ^[1]	\$5,320.00	\$6,142.00	\$6,480.00	\$7,000.00	\$7,390.00	38.9%	5.6%
3 person/1 bedroom ^[2]	--	--	--	--	\$6,860.00	N/A	N/A
4 person/2 bedroom ^[3]	\$5,822.00	\$5,612.00	\$5,920.00	\$6,300.00	\$6,650.00	14.2%	5.6%
6 person/2 bedroom	-	-	\$5,628.00	\$5,800.00	\$6,120.00	N/A	5.5%
<i>Lodge</i>							
one bedroom, common bath	\$5,770.00	\$5,510.00	-	-	-	N/A	N/A
<i>Oak Hall</i>							
2 person/1 bedroom [1]	\$5,822.00	\$6,142.00	-	-	-	N/A	N/A
double room	-	-	\$6,480.00	\$6,840.00	\$7,220.00	N/A	5.6%
<i>Pine Hall</i>							
6 person/3 bedroom ^[4]	\$5,222.00	\$5,510.00	-	-	-	N/A	N/A
double room	-	-	\$5,812.00	\$6,140.00	\$6,480.00	N/A	5.5%
<i>Laurel Hall</i>							
4 single bedrooms per unit	-	-	-	-	\$7,090.00	N/A	N/A
<i>Linden Hall</i>							
4 person/2 bedroom ^[4]	\$5,222.00	\$5,510.00	-	-	-	N/A	N/A
double room	-	-	\$5,812.00	\$6,140.00	\$6,480.00	N/A	5.5%
<i>Maple Hall</i>							
double room	\$5,822.00	\$6,142.00	\$6,480.00	\$6,840.00	\$7,220.00	24.0%	5.6%
triple room	-	\$5,836.00	\$6,154.00	\$6,340.00	\$6,690.00	N/A	5.5%
<i>The Village</i>							
single room	\$5,822.00	\$6,600.00	\$6,960.00	\$7,400.00	\$7,810.00	N/A	5.5%
<i>The Overlook</i>							
double room	-	-	\$6,480.00	\$6,840.00	\$7,220.00	N/A	5.6%
<i>Meal Plan</i>							
10 meals (Tasty 10) ^[5]	\$1,940.00	\$1,940.00	\$2,038.00	\$2,038.00	\$2,100.00	8.2%	3.0%
Flexible 5	\$2,020.00	\$2,020.00	\$2,120.00	\$2,120.00	--	N/A	N/A
Sensible 6 ^[6]	--	--	--	--	\$2,120.00	N/A	N/A
The Ultimate (unlimited)	\$2,500.00	\$2,500.00	\$2,624.00	\$2,624.00	\$2,704.00	8.2%	3.0%
The Super 14	\$2,460.00	\$2,460.00	\$2,580.00	\$2,580.00	\$2,660.00	8.1%	3.1%
Laurel Hall Flex dollars ^[6]	--	--	--	--	\$800.00	N/A	N/A

[1] One Bedroom Apt/ Double Room
 [2] One Bedroom Apt/ Triple Room
 [3] Two Bedroom Apt/ Double Room

[4] Double Rooms
 [5] Renamed Tasty Plan, Fall 2002
 [6] New board plan instated Fall 2006.

SALES AND INCOME TO THE COLLEGE FROM THE CAMPUS STORE

Fiscal Year	Sales			Commission *		
	Amount	Percent Change From Previous Year	Cumulative Percent Change From 1984	Amount	Percent Change From Previous Year	Cumulative Percent Change From 1984
1984	\$744,198	N/A	0.0%	\$31,233	N/A	0.0%
1985	\$692,509	-6.9%	-6.9%	\$34,421	10.2%	10.2%
1986	\$786,730	13.6%	5.7%	\$39,174	13.8%	25.4%
1987	\$902,522	14.7%	21.3%	\$48,903	24.8%	56.6%
1988	\$1,044,635	15.7%	40.4%	\$84,309	72.4%	169.9%
1989	\$1,048,231	0.3%	40.9%	\$87,628	3.9%	180.6%
1990	\$1,235,057	17.8%	66.0%	\$91,589	4.5%	193.2%
1991	\$1,500,000	21.5%	101.6%	\$120,000	31.0%	284.2%
1992	\$1,511,888	0.8%	103.2%	\$131,070	9.2%	319.7%
1993	\$1,577,806	4.4%	112.0%	\$137,003	4.5%	338.6%
1994	\$1,647,700	4.4%	121.4%	\$143,300	4.6%	358.8%
1995	\$1,718,917	4.3%	131.0%	\$154,703	8.0%	395.3%
1996	\$1,718,409	0.0%	130.9%	\$154,694	0.0%	395.3%
1997	\$1,810,524	5.4%	143.3%	\$162,947	5.3%	421.7%
1998	\$1,907,934	5.4%	156.4%	\$171,714	5.4%	449.8%
1999	\$2,056,818	7.8%	176.4%	\$185,114	7.8%	492.7%
2000	\$2,138,544	4.0%	187.4%	\$192,469	4.0%	516.2%
2001	\$2,523,811	18.0%	239.1%	\$222,143	15.4%	611.2%
2002	\$2,521,055	-0.1%	238.8%	\$242,232	9.0%	675.6%
2003	\$3,012,500	19.5%	304.8%	\$289,120	19.4%	825.7%
2004	\$3,056,600	1.5%	310.7%	\$299,002	3.4%	857.3%
2005	\$3,255,140	6.5%	337.4%	\$320,045	7.0%	924.7%
2006	\$3,060,360	-6.0%	311.2%	\$314,700	-1.7%	907.6%

* Prior to FY 06, Commission was 8.5% of sales (minus sales tax and refunds) up to \$1,000,000, and 9% for over one million dollars. As of FY 06, Commission is 10.1% of sales (minus sales tax and refunds) up to \$2,500,000, and 11.1% for over \$2,500,000.

FOOD SERVICE COMMISSION

Fiscal Year	Income *	Percent Change From Previous Year	Cumulative Percent Change From 1987
1987	\$36,538	N/A	0.0%
1988	\$39,000	6.7%	6.7%
1989	\$41,147	5.5%	12.6%
1990	\$41,000	-0.4%	12.2%
1991	\$75,000	82.9%	105.3%
1992	\$85,000	13.3%	132.6%
1993	\$90,000	5.9%	146.3%
1994 [1]	\$66,350	-26.3%	81.6%
1995	\$63,471	-4.3%	73.7%
1996	\$60,883	-4.1%	66.6%
1997	\$69,704	14.5%	90.8%
1998	\$66,148	-5.1%	81.0%
1999[2]	\$49,119	-25.7%	34.4%
2000	(\$66,349)	-235.1%	-281.6%
2001	\$336,802	-607.6%	821.8%
2002	\$175,765	-47.8%	381.0%
2003	\$360,934	105.4%	887.8%
2004	\$309,002	-14.4%	745.7%
2005	\$460,175	48.9%	1159.4%
2006	\$325,815	-29.2%	791.7%

* Income from 8/86 to 8/90 was generated by a monthly rental fee plus 1% of the gross income over \$400,000 (not including Meal Plan). The next contract (8/90 to 8/93) included commission to the College as follows: 5% on all sales up to \$1.5 million, and 8% over \$1.5 million. There was a minimum guarantee per year for each of the three years of the contract of \$75,000, \$85,000, and \$90,000 respectively.

[1] In 9/93 the Food Service changed from DAKA to Woods. \$7,550 paid by DAKA and \$58,800 paid by Woods.

[2] Lower revenues are a result of change in accounting method.

**CAPITAL PROJECT STATUS REPORT
(as of 05/23/07)**

Name	Budget	Funding Source	Est/Actual Construction Start Date	Estimated Completion Date	Status
Mansion Renovations	\$2,081,804	HECIP	07/01/01	07/31/05	7
Sports and Recreation Center	\$27,738,173	EFABI, HECIP, FR	12/15/02	04/30/05	8
Sustainability Education Center *	\$1,262,185	EFABI, GR, HUD, RCR	10/01/05	11/30/07	6
Phase IX Housing (incl. Garage & Loop Rd, Utility relocations)	\$60,220,108	EFABI	03/01/05	07/31/06	7
Anisfield School of Business, and the Center for Science, Education and Technology	\$30,500,000	EFABI	08/01/05	08/01/07	3
Campus Signage (exterior)	\$900,000	RCR	07/01/05	10/31/06	8
Campus Core Landscaping	\$300,000	EFABI	04/01/07	10/31/07	3
Utility Infrastructure (electrical upgrades)	\$1,200,000	EFABI	01/01/07	08/31/07	3
Athletic Field Modification	\$2,000,000	EFABI	04/01/07	09/30/07	3

Funding Source Code:

EFABI EFA Bond Issue
 HECIP Higher Education Capital Improvement Program
 RCR Ramapo College Reserve
 FR Fund Raising
 GR Grant Funding
 HUD VA HUD Funding

Other Codes:

TBD To Be Determined

Status Code:

1 Concept
 2 A/E Award
 3 Design Initiated
 4 Design Complete
 5 NJ DCA Code Review
 6 Construction Bidding
 7 Under Construction
 8 Substantially Complete
 9 Completed +/-or Closed Out

* Building concept has been revised. Budget includes \$245,000 spent on prior conception.

STAFFING SUMMARY BY JOB CATEGORY

	FY 2002		FY 2003		FY 2004		FY 2005		FY 2006		Percent Change 02 to 06	Percent Change 05 to 06
	No.	Pct.	No.	Pct.	No.	Pct.	No.	Pct.	No.	Pct.		
Faculty [1]	175	29.7%	178	30.5%	187	29.5%	196	30.6%	200	31.0%	14.3%	2.0%
Deans of Schools/Library	6	1.0%	6	1.0%	6	0.9%	6	0.9%	6	0.9%	0.0%	0.0%
Administrative [2]	13	2.2%	13	10.5%	8	12.0%	9	12.7%	6	10.7%	-53.8%	-33.3%
Professional	198	33.6%	199	34.1%	223	35.2%	220	34.4%	230	35.7%	16.2%	4.5%
Other	136	23.1%	126	21.6%	133	21.0%	128	20.0%	134	20.8%	-1.5%	4.7%
Clerical	62	10.5%	61	10.5%	76	12.0%	81	12.7%	69	10.7%	11.3%	-14.8%
Total	590		583		633		640		645		9.3%	0.8%

[1] Includes librarians and full-time substitutes (temporary faculty hired to replace permanent faculty on paid leave or sabbatical). Excludes faculty/staff on long-term disability who are not expected to return.

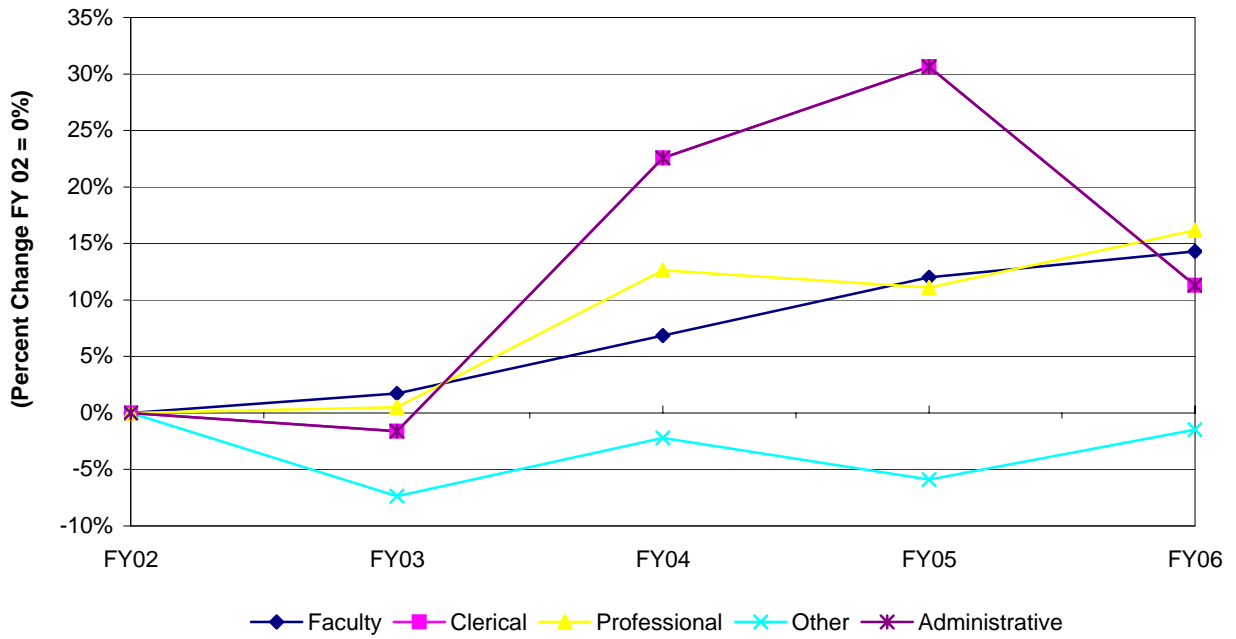
[2] The Administrative configuration changed in 2004 to include the President, the Provost, the Vice Presidents, and the Vice Provosts.

STAFFING SUMMARY BY DIVISION

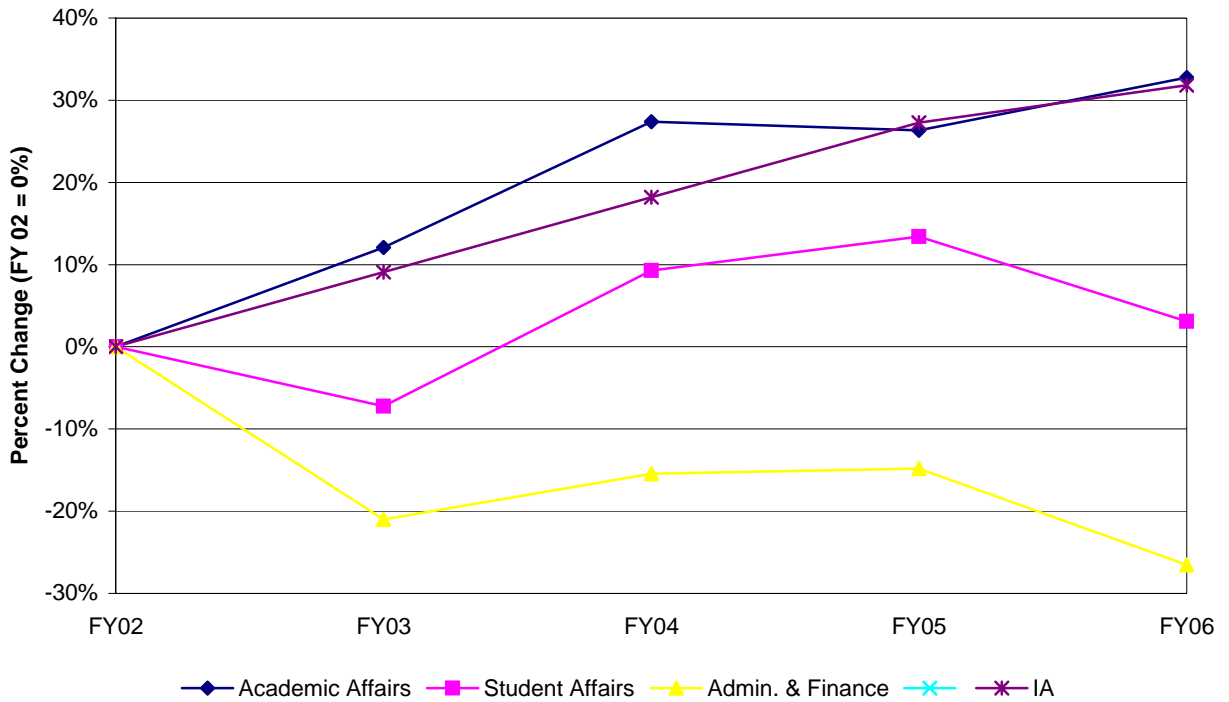
	FY 2002		FY 2003		FY 2004 [3]		FY 2005 [3]		FY 2006		Percent Change 02 to 06	Percent Change 05 to 06
	No.	Pct.	No.	Pct.	No.	Pct.	No.	Pct.	No.	Pct.		
Academic Affairs	281	47.6%	315	54.0%	358	56.6%	355	55.5%	373	57.8%	32.7%	5.1%
Student Affairs	97	16.4%	90	15.4%	106	16.7%	110	17.2%	100	15.5%	3.1%	-9.1%
Administration & Finance	162	27.5%	128	22.0%	137	21.6%	138	21.6%	119	18.4%	-26.5%	-13.8%
Enrollment Management	22	3.7%	21	3.6%	--	0.0%	--	0.0%	--	0.0%	N/A	N/A
Institutional Advancement	22	3.7%	24	4.1%	26	4.1%	28	4.4%	29	4.5%	31.8%	3.6%
President's Office	6	1.0%	5	0.9%	6	0.9%	9	1.4%	24	3.7%	300.0%	166.7%
Total	590		583		633		640		645		9.3%	0.8%

[3] Academic Affairs staffing summary for FY 04 includes employees previously reported under Enrollment Management.

CUMULATIVE PERCENT CHANGE IN STAFFING BY JOB CATEGORY
 (includes categories with 10 or more staff in each of 5 years)



CUMULATIVE PERCENT CHANGE IN STAFFING BY DIVISION
 (includes divisions with 10 or more staff in each of 5 years)



STAFFING SUMMARY BY DIVISION AND JOB CATEGORY
Fiscal Year 2006

	Academic Affairs		Student Affairs		Admin. & Finance		Inst. Advancement		President's Office		Total	
	No.	Col. Pct.	No.	Col. Pct.	No.	Col. Pct.	No.	Col. Pct.	No.	Col. Pct.	No.	Col. Pct.
Faculty	200	53.6%	0	0.0%	0	0.0%	0	0.0%	0	0.0%	200	31.0%
Deans of Schools/Library	6	1.6%	0	0.0%	0	0.0%	0	0.0%	0	0.0%	6	0.9%
Administrative	3	0.8%	1	1.0%	0	0.0%	1	3.4%	1	4.2%	6	0.9%
Professional	114	30.6%	56	56.0%	28	23.5%	18	62.1%	14	58.3%	230	35.7%
Other	15	4.0%	33	33.0%	81	68.1%	4	13.8%	1	4.2%	134	20.8%
Clerical	35	9.4%	10	10.0%	10	8.4%	6	20.7%	8	33.3%	69	10.7%
Total	373		100		119		29		24		645	100.0%

STAFFING SUMMARY BY DIVISION AND SEX
Fiscal Year 2006

	Academic Affairs		Student Affairs		Admin. & Finance		Inst. Advancement		President's Office		Total	
	No.	Col. Pct.	No.	Col. Pct.	No.	Col. Pct.	No.	Col. Pct.	No.	Col. Pct.	No.	Col. Pct.
Female	198	53.1%	58	58.0%	37	31.1%	21	72.4%	16	66.7%	330	51.2%
Male	175	46.9%	42	42.0%	82	68.9%	8	27.6%	8	33.3%	315	48.8%
Total	373		100		119		29		24		645	100.0%

STAFFING SUMMARY BY DIVISION AND ETHNICITY
Fiscal Year 2006

	Academic Affairs		Student Affairs		Admin. & Finance		Inst. Advancement		President's Office		Total	
	No.	Col. Pct.	No.	Col. Pct.	No.	Col. Pct.	No.	Col. Pct.	No.	Col. Pct.	No.	Col. Pct.
Amer. Indian/Alaskan Nat.	2	0.5%	1	1.0%	4	3.4%	0	0.0%	0	0.0%	7	1.1%
Asian/Pacific Islander	22	5.9%	2	2.0%	4	3.4%	1	3.4%	3	12.5%	32	5.0%
Black, non-Hispanic	34	9.1%	17	17.0%	20	16.8%	3	10.3%	5	20.8%	79	12.2%
Hispanic	24	6.4%	7	7.0%	10	8.4%	2	6.9%	1	4.2%	44	6.8%
White, non-Hispanic	290	77.7%	72	72.0%	80	67.2%	23	79.3%	15	62.5%	480	74.4%
Missing/Other	1	0.3%	1	1.0%	1	0.8%	0	0.0%	0	0.0%	3	0.5%
Total	373		100		119		29		24		645	100.0%

STAFFING SUMMARY BY JOB CATEGORY AND DIVISION
Fiscal Year 2006

	Faculty		Deans of Schools		Administrative		Professional		Other		Clerical		Total	
	No.	Col. Pct.	No.	Col. Pct.	No.	Col. Pct.	No.	Col. Pct.	No.	Col. Pct.	No.	Col. Pct.	No.	Col. Pct.
Academic Affairs	200	100.0%	6	100.0%	3	50.0%	114	49.6%	15	11.2%	35	50.7%	373	57.8%
Student Affairs	0	0.0%	0	0.0%	1	16.7%	56	28.0%	33	24.6%	10	14.5%	100	15.5%
Administration & Finance	0	0.0%	0	0.0%	0	0.0%	28	12.2%	81	60.4%	10	14.5%	119	18.4%
Institutional Advancement	0	0.0%	0	0.0%	1	16.7%	18	7.8%	4	3.0%	6	8.7%	29	4.5%
President's Office	0	0.0%	0	0.0%	1	16.7%	14	6.1%	1	0.7%	8	11.6%	24	3.7%
Total	200		6		6		230		134		69		645	100.0%

STAFFING SUMMARY BY JOB CATEGORY AND SEX
Fiscal Year 2006

	Faculty		Deans of Schools		Administrative		Professional		Other		Clerical		Total	
	No.	Col. Pct.	No.	Col. Pct.	No.	Col. Pct.	No.	Col. Pct.	No.	Col. Pct.	No.	Col. Pct.	No.	Col. Pct.
Female	92	46.0%	2	33.3%	4	66.7%	138	60.0%	27	20.1%	67	97.1%	330	51.2%
Male	108	54.0%	4	66.7%	2	33.3%	92	40.0%	107	79.9%	2	2.9%	315	48.8%
Total	200		6		6		230		134		69		645	100.0%

STAFFING SUMMARY BY JOB CATEGORY AND ETHNICITY
Fiscal Year 2006

	Faculty		Deans of Schools		Administrative		Professional		Other		Clerical		Total	
	No.	Col. Pct.	No.	Col. Pct.	No.	Col. Pct.	No.	Col. Pct.	No.	Col. Pct.	No.	Col. Pct.	No.	Col. Pct.
Amer. Indian/Alaskan Nat.	0	0.0%	0	0.0%	0	0.0%	0	0.0%	4	3.0%	3	4.3%	7	1.1%
Asian/Pacific Islander	11	5.5%	0	0.0%	1	16.7%	12	5.2%	5	3.7%	3	4.3%	32	5.0%
Black, non-Hispanic	16	8.0%	1	16.7%	0	0.0%	30	13.0%	25	18.7%	7	10.1%	79	12.2%
Hispanic	13	6.5%	0	0.0%	0	0.0%	15	6.5%	15	11.2%	1	1.4%	44	6.8%
White, non-Hispanic	159	79.5%	5	83.3%	5	83.3%	173	75.2%	83	61.9%	55	79.7%	480	74.4%
Missing/Other	1	0.5%	0	0.0%	0	0.0%	0	0.0%	2	1.5%	0	0.0%	3	0.5%
Total	200		6		6		230		134		69		645	100.0%

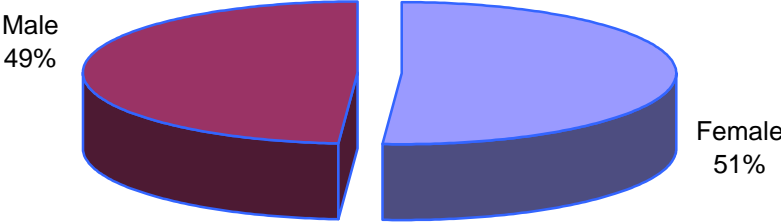
STAFFING SUMMARY BY JOB CATEGORY, ETHNICITY, AND SEX
Fiscal Year 2006

	Amer. Ind./ Nat. Al.		Asian/Pac. Isl.		Black, non-Hisp.		Hispanic		White, non-Hisp.		Missing/Other		TOTAL		Total
	# Female	# Male	# Female	# Male	# Female	# Male	# Female	# Male	# Female	# Male	# Female	# Male	# Female	# Male	
Faculty	0	0	3	8	4	12	9	4	75	84	1	0	92	108	200
Deans of Schools	0	0	0	0	0	1	0	0	2	3	0	0	2	4	6
Administrative	0	0	0	1	0	0	0	0	4	1	0	0	4	2	6
Professional	0	0	6	6	20	10	9	6	103	70	0	0	138	92	230
Other	2	2	0	5	5	20	2	13	17	66	1	1	27	107	134
Clerical	3	0	2	1	7	0	1	0	54	1	0	0	67	2	69
TOTAL	5	2	11	21	36	43	21	23	255	225	2	1	330	315	645

STAFFING SUMMARY BY DIVISION, ETHNICITY, AND SEX
Fiscal Year 2006

	Amer. Ind./ Nat. Al.		Asian/Pac. Isl.		Black, non-Hisp.		Hispanic		White, non-Hisp.		Missing		TOTAL		Total
	# Female	# Male	# Female	# Male	# Female	# Male	# Female	# Male	# Female	# Male	# Female	# Male	# Female	# Male	
Academic Affairs	2	0	8	14	14	20	14	10	159	131	1	0	198	175	373
Student Affairs	1	0	0	2	8	9	3	4	46	26	0	1	58	42	100
Admin. & Finance	2	2	1	3	7	13	3	7	29	57	1	0	37	82	119
Inst. Advancement	0	0	1	0	2	1	1	1	17	6	0	0	21	8	29
President's Office	0	0	1	2	5	0	0	1	10	5	0	0	16	8	24
TOTAL	5	2	11	21	36	43	21	23	255	225	2	1	330	315	645

Employees by Sex (N=645)



Employees by Ethnicity (N=645)

