

**SECTION VI:**

**STUDENT SERVICES**

2006 INSTITUTIONAL PROFILE

# CAHILL CENTER <sup>[1]</sup>

## COOPERATIVE EDUCATION

	02/03	03/04	04/05	05/06	06/07	Percent Change 02/03 to 06/07	Percent Change 05/06 to 06/07
Number of Employers	271	263	249	277	256	-5.5%	-7.6%
Number of Students:							
Female	189	196	198	216	157	-16.9%	-27.3%
Male	143	163	129	132	148	3.5%	12.1%
Total Students	332	359	327	348	305	-8.1%	-12.4%
Dollars Earned	\$1,256,294	\$1,115,347	\$1,105,414	\$1,051,361	\$806,095	-35.8%	-23.3%
Credits Earned	1,290	1,365	1,218	1,413	1,250	-3.1%	-11.5%

## CAREER SERVICES

	02/03	03/04	04/05	05/06	06/07	Percent Change 02/03 to 06/07	Percent Change 05/06 to 06/07
Course Participants	133	151	133	143	160	20.3%	11.9%
Job Fair Participants	1250	1200	900	600	600	-52.0%	0.0%

## STUDENT ASSISTANT PROGRAM

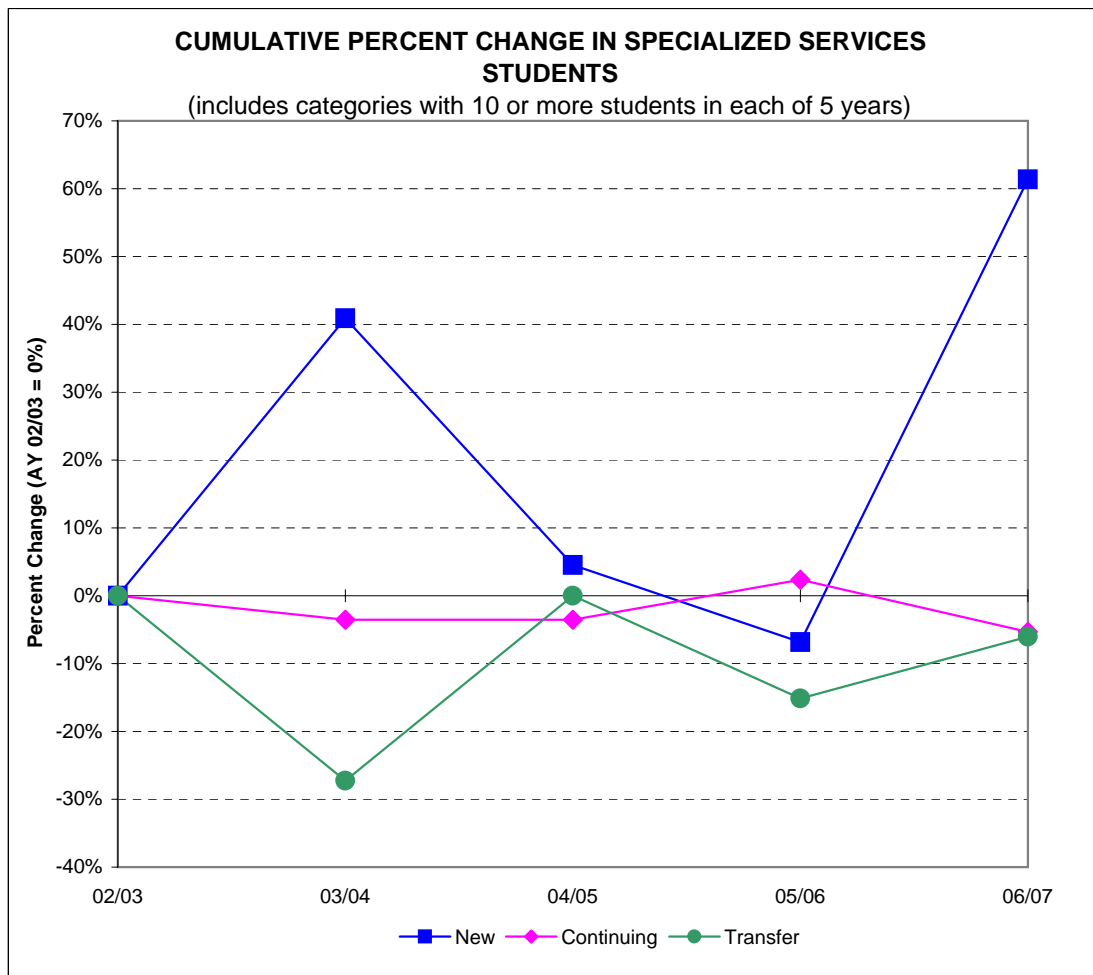
	02/03	03/04	04/05	05/06	06/07	Percent Change 02/03 to 06/07	Percent Change 05/06 to 06/07
Student Workers [2]	711	706	782	739	782	10.0%	5.8%

[1] This information is not system generated. Data is self-reported by unit.

[2] The Cahill Center acquired responsibility in 2002 for managing students assigned to perform special projects for faculty.

## SPECIALIZED SERVICES <sup>[1]</sup>

Students	02/03	03/04	04/05	05/06	06/07	Percent Change	Percent Change
						02/03 to 06/07	05/06 to 06/07
New [2]	44	62	46	41	71	61.4%	73.2%
Continuing	169	163	163	173	160	-5.3%	-7.5%
Transfer	33	24	33	28	31	-6.1%	10.7%
Re-Admits	1	3	1	1	2	100.0%	100.0%
Visiting	--	--	--	--	4	--	--
<b>Total</b>	<b>247</b>	<b>252</b>	<b>243</b>	<b>243</b>	<b>268</b>	<b>8.5%</b>	<b>10.3%</b>

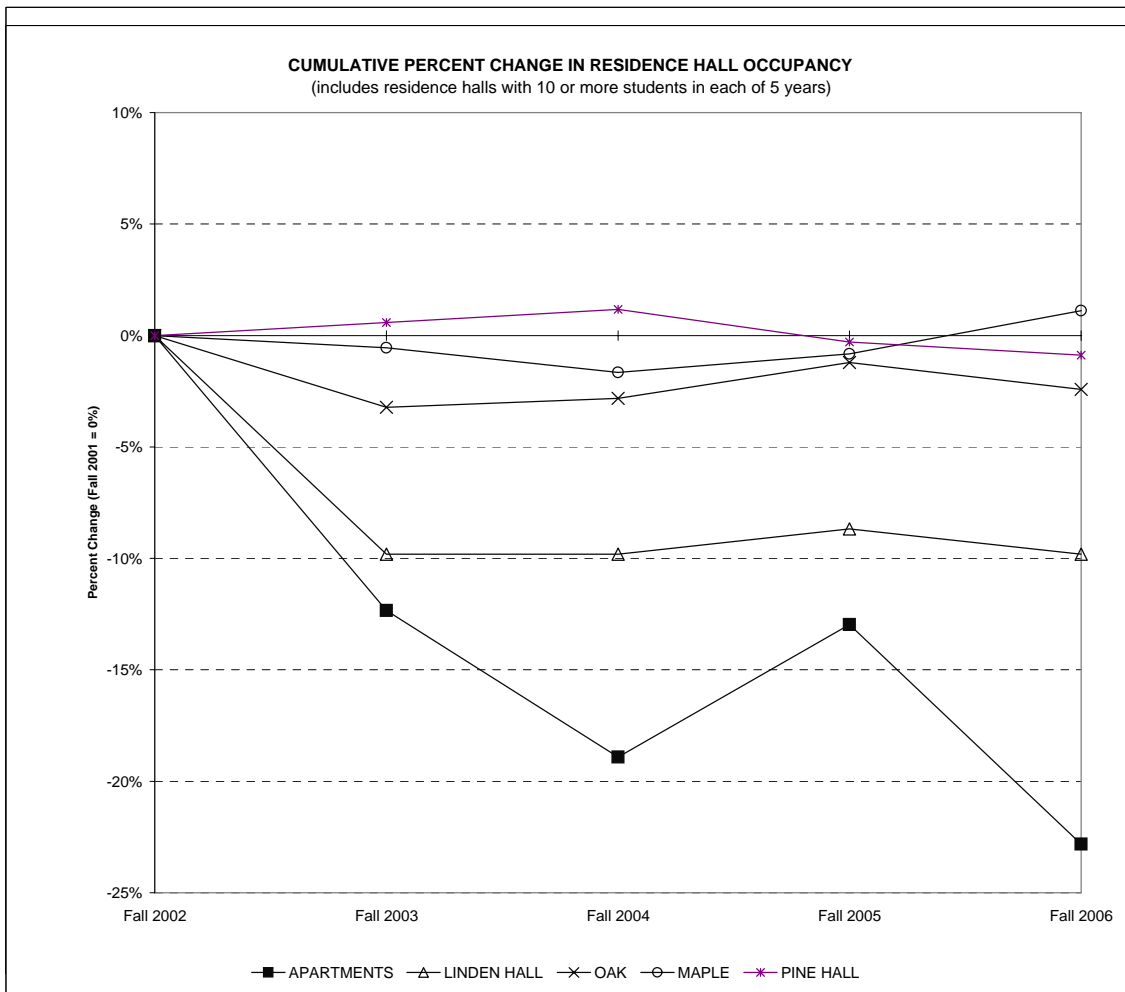


[1] This information is not system-generated. Data is self-reported by unit.

[2] Includes students already enrolled at Ramapo College for one or more semesters, but new to the Office of Specialized Services, and new first-time freshmen.

FALL SEMESTER RESIDENCE HALL OCCUPANCY, 2002 TO 2006<sup>[1]</sup>

	Fall 2002		Fall 2003		Fall 2004		Fall 2005		Fall 2006		Percent Change 02 to 06	Percent Change 05 to 06
	Number	Percent	Number	Percent	Number	Percent	Number	Percent	Number	Percent		
APARTMENTS	640	31.0%	561	24.7%	519	20.8%	557	21.8%	494	17.9%	-22.8%	-11.3%
LINDEN HALL	265	12.8%	239	10.5%	239	9.6%	242	9.5%	239	8.7%	-9.8%	-1.2%
LODGE	17	0.8%	7	0.3%	0	0.0%	0	0.0%	0	0.0%	-100.0%	N/A
OAK	248	12.0%	240	10.6%	241	9.7%	245	9.6%	242	8.8%	-2.4%	-1.2%
MAPLE	361	17.5%	359	15.8%	355	14.2%	358	14.0%	365	13.3%	1.1%	2.0%
PINE HALL	342	16.6%	344	15.1%	346	13.9%	341	13.4%	339	12.3%	-0.9%	-0.6%
OVERFLOW/HOTEL	1	0.0%	-	-	-	-	-	-	-	-	N/A	N/A
VILLAGE	191	9.2%	523	23.0%	513	20.5%	520	20.4%	523	19.0%	173.8%	0.6%
THE OVERLOOK	-	-	-	-	284	11.4%	290	11.4%	290	10.5%	N/A	0.0%
LAUREL HALL	-	-	-	-	-	-	-	-	262	9.5%	N/A	#VALUE!
<b>TOTAL</b>	<b>2,065</b>		<b>2,273</b>		<b>2,497</b>		<b>2,553</b>		<b>2,754</b>		<b>33.4%</b>	<b>7.9%</b>



[1] Occupancy as of the 10th day of the semester as reported in the Registrar's official file.

**FINANCING FOR RESIDENCE LIFE, STUDENT CENTER, AND EDUCATIONAL PROJECTS <sup>[1] [2]</sup>**

Facilities Bond	Name	Interest Rate	Outstanding	Outstanding	Outstanding	Outstanding	Outstanding	Year Paid in Full
			Principal Payments Jun-02 (000)	Principal Payments Jun-03 (000)	Principal Payments Jun-04 (000)	Principal Payments Jun-05 (000)	Principal Payments Jun-06 (000)	
<b>Residence Life</b>								
Series 1973A	Phase I	5.300% to 5.600%	\$225	\$115	\$0	\$0	\$0	2003
Series 1993E [3]	Pine & Linden	3.500% to 5.500%	\$12,415	\$0	\$0	\$0	\$0	n/a
Series 1998G	Oak Hall/Pavilion	4.100% to 4.625%	\$16,150	\$15,830	\$15,500	\$15,155	\$14,790	2028
Series 1999E [5]	Maple Hall/Pavilion Expansion	5.250% to 5.600%	\$19,900	\$19,580	\$2,420	\$2,065	\$1,690	2029
Series 2001D	The Village/Apt. Wiring	4.800% to 5.000%	\$40,480	\$40,480	\$40,480	\$39,735	\$38,965	2031
Series 2002H	Village Completion/Overlook	2.500% to 5.000%	\$0	\$28,655	\$28,610	\$28,580	\$28,000	2032
Series 2003G [3]	Pine & Linden	2.000% to 3.709%	\$0	\$9,300	\$9,300	\$9,300	\$9,185	2013
Series 2003H [5]	Oak Hall/Pavilion/Phase I Renov.	4.250% to 5.000%	\$0	\$0	\$18,930	\$18,930	\$18,930	2029
Series 2004E	Laurel Hall	3.190% to 5.000%	\$0	\$0	\$0	\$44,350	\$44,350	2035
<b>Student Center</b>								
Series 1993D [4]	Student Center Annex	3.500% to 5.500%	\$2,285	\$0	\$0	\$0	\$0	n/a
Series 1998H	Student Center Renovations	4.100% to 4.600%	\$1,745	\$1,630	\$1,510	\$1,385	\$1,255	2013
Series 2002I	Student Center Renovations	2.500% to 5.00%	\$0	\$2,145	\$2,085	\$2,045	\$2,005	2032
Series 2003F [4]	Student Center Annex	1.500% to 3.500%	\$0	\$1,820	\$1,820	\$1,820	\$1,810	2013
<b>Educational &amp; General</b>								
Series 1997A	Berrie Center	4.900% to 5.150%	\$7,330	\$0	\$0	\$0	\$0	2003
Series 1998I	Voice, Video, Data	4.100% to 4.500%	\$735	\$645	\$550	\$450	\$345	2008
Series 2000B	Higher Ed Capital Bond Fund	4.500% to 5.750%	\$2,468	\$2,387	\$2,305	\$2,218	\$2,126	2021
Series 2001A	Dormitory Safety		\$964	\$895	\$826	\$757	\$688	2016
Series 2001E	Sustainability Center/Equip.	3.600% to 4.000%	\$2,535	\$2,225	\$1,885	\$1,535	\$1,170	2008
Series 2002A	Higher Ed Capital Bond Fund	3.00% to 5.250%	\$0	\$1,849	\$1,850	\$1,850	\$1,850	2023
Series 2002J	Bradley Center/Havemeyer House	2.500% to 5.00%	\$0	\$29,620	\$29,580	\$29,550	\$28,945	2032
Series 2003A	Equipment Leasing Fund	2.500% to 5.00%	\$0	\$467	\$467	\$394	\$320	2010
Series 2004E	Loop Road/Parking Garage	3.190% to 5.000%	\$0	\$0	\$0	\$9,630	\$9,630	2035
Series 2006D	Sustainability Center Completion	4.400% to 5.000%	\$0	\$0	\$0	\$0	\$49,085	2036
			<u>\$107,232</u>	<u>\$157,643</u>	<u>\$158,118</u>	<u>\$209,749</u>	<u>\$255,139</u>	

[1] This information is not system-generated. Data is self-reported by unit.

[2] The College has pledged all revenues generated from the operation of the residential facilities, the student center building and from other legally available funds of the College under the aforementioned capital lease agreements.

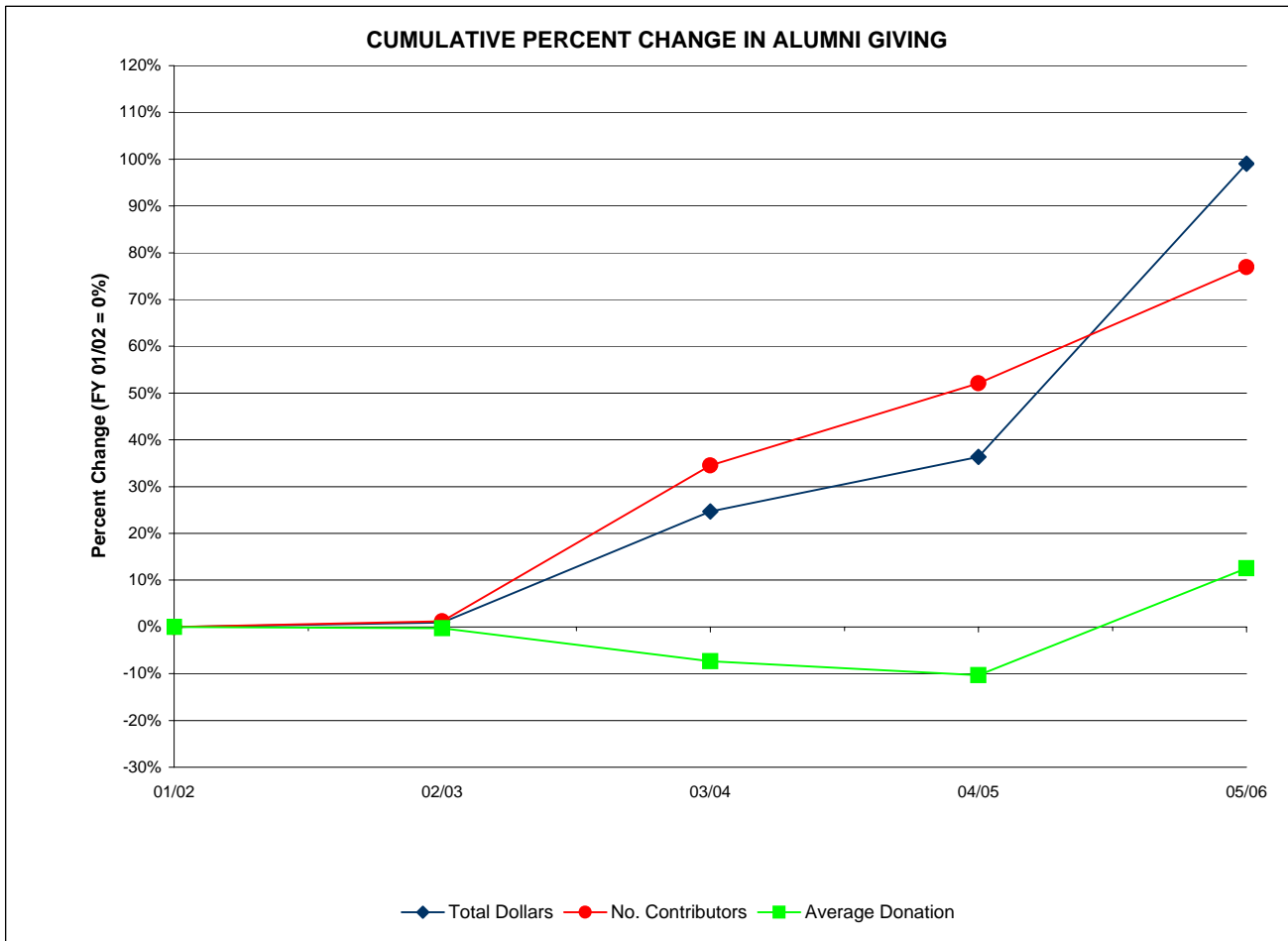
[3] Series 2003G replaced series 1993E through refinancing.

[4] Series 2003F replaced series 1993D through refinancing.

[5] Series 2003H partially replaced series 1999E through refinancing.

**ALUMNI GIVING, FISCAL YEAR 2002 TO FISCAL YEAR 2006<sup>[1]</sup>**

Giving	01/02	02/03	03/04	04/05	05/06	Percent Change	
						01/02 to 05/06	04/05 to 05/06
Total Dollars	\$94,548	\$95,423	\$117,854	\$128,918	\$188,211	99.1%	46.0%
Number of Donors	1,217	1,232	1,637	1,851	2,153	76.9%	16.3%
Average Alumni Donation	\$77.69	\$77.46	\$71.99	\$69.65	\$87.42	12.5%	25.5%
Number of Alumni Solicited	15,047	15,384	15,825	16,574	17,886	18.9%	7.9%
Phonathon New Donors <sup>[2]</sup>	326	346	351	353	104	-68.1%	-70.5%



[1] This information is not system-generated. Data is self-reported by unit.

[2] Decrease in FY 05/06 due to strategic change in Phonathon to target a smaller group of no-donor alumni.

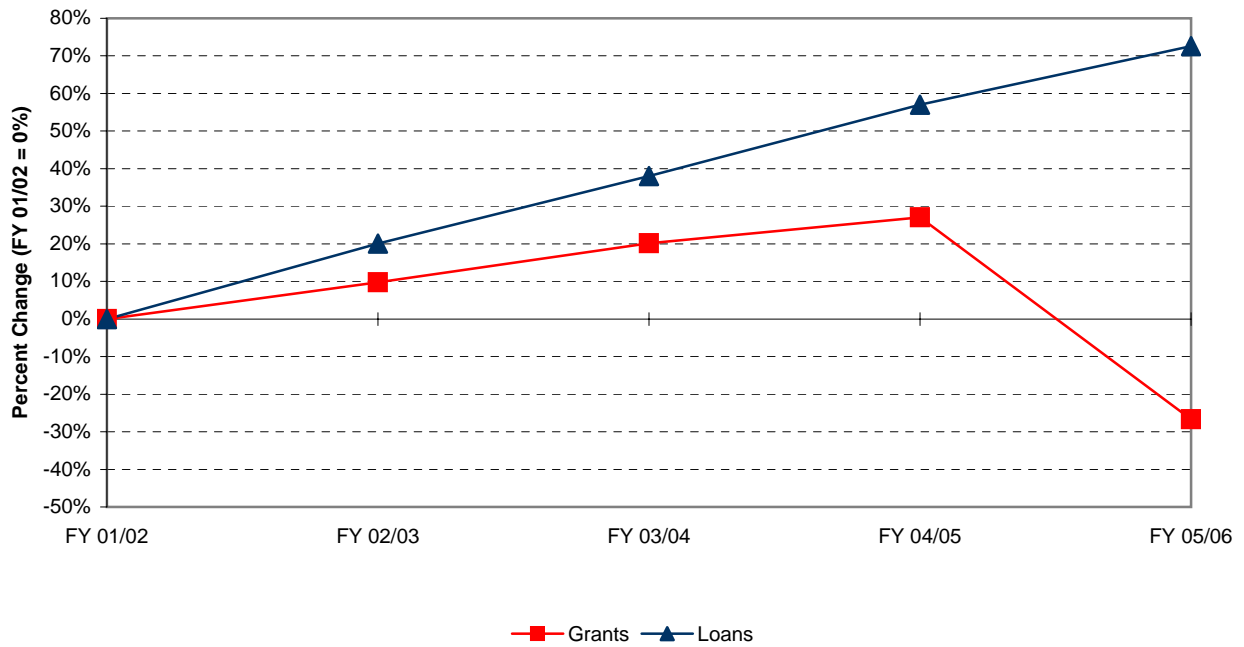
**STUDENT FINANCIAL AID, FY 2002 TO FY 2006<sup>[1]</sup>**

<b>Financial Aid Dollars</b>	FY 01/02	FY 02/03	FY 03/04	FY 04/05	FY 05/06	Percent Change	Percent Change
	\$	\$	\$	\$	\$	01/02 to 05/06	04/05 to 05/06
Pell Grants	\$2,190,637	\$2,401,840	\$2,514,153	\$2,473,848	\$2,387,812	9.0%	-3.5%
College Work Study	\$195,703	\$250,195	\$193,790	\$231,882	\$192,715	-1.5%	-16.9%
Perkins Loans	\$114,784	\$192,813	\$159,703	\$189,259	\$124,272	8.3%	-34.3%
Stafford Loans (total)	\$8,825,414	\$9,564,939	\$10,251,425	\$11,027,934	\$10,695,474	21.2%	-3.0%
Subsidized	\$5,068,923	\$5,761,135	\$6,392,347	\$6,997,434	\$6,712,707	32.4%	-4.1%
Un-subsidized	\$3,756,491	\$3,803,804	\$3,859,078	\$4,030,500	\$3,982,767	6.0%	-1.2%
SEOG	\$225,855	\$233,320	\$237,350	\$239,269	\$226,202	0.2%	-5.5%
Parents Loans for Dependent Students	\$1,248,652	\$1,921,468	\$2,632,337	\$3,336,712	\$4,252,088	240.5%	27.4%
Ramapo College Grants (total)	\$3,720,368	\$4,290,405	\$4,962,062	\$5,203,193	\$4,439,901	-89.9%	-14.7%
EOF	\$387,838	\$430,818	\$498,888	\$419,534	\$374,863	-97.5%	-10.6%
Non-EOF	\$59,530	\$39,859	\$0	\$1,767	\$9,703	-83.7%	449.1%
Institutional Grants	\$3,273,000	\$3,819,728	\$4,463,174	\$4,781,892	\$4,055,335	23.9%	-15.2%
TAG	\$2,360,593	\$2,440,560	\$2,574,564	\$2,983,577	\$3,098,991	31.3%	3.9%
Educational Opportunity Fund (EOF)	\$325,519	\$318,206	\$315,499	\$311,800	\$381,067	17.1%	22.2%
New Jersey Class Loans	\$1,931,612	\$2,541,377	\$3,077,285	\$3,232,706	\$3,034,650	57.1%	-6.1%
Private Loans	\$203,953	\$572,703	\$891,351	\$1,566,375	\$3,163,450	1451.1%	102.0%
<b>Total</b>	<b>\$21,343,090</b>	<b>\$24,727,826</b>	<b>\$27,809,519</b>	<b>\$30,796,555</b>	<b>\$31,996,622</b>	<b>49.9%</b>	<b>3.9%</b>

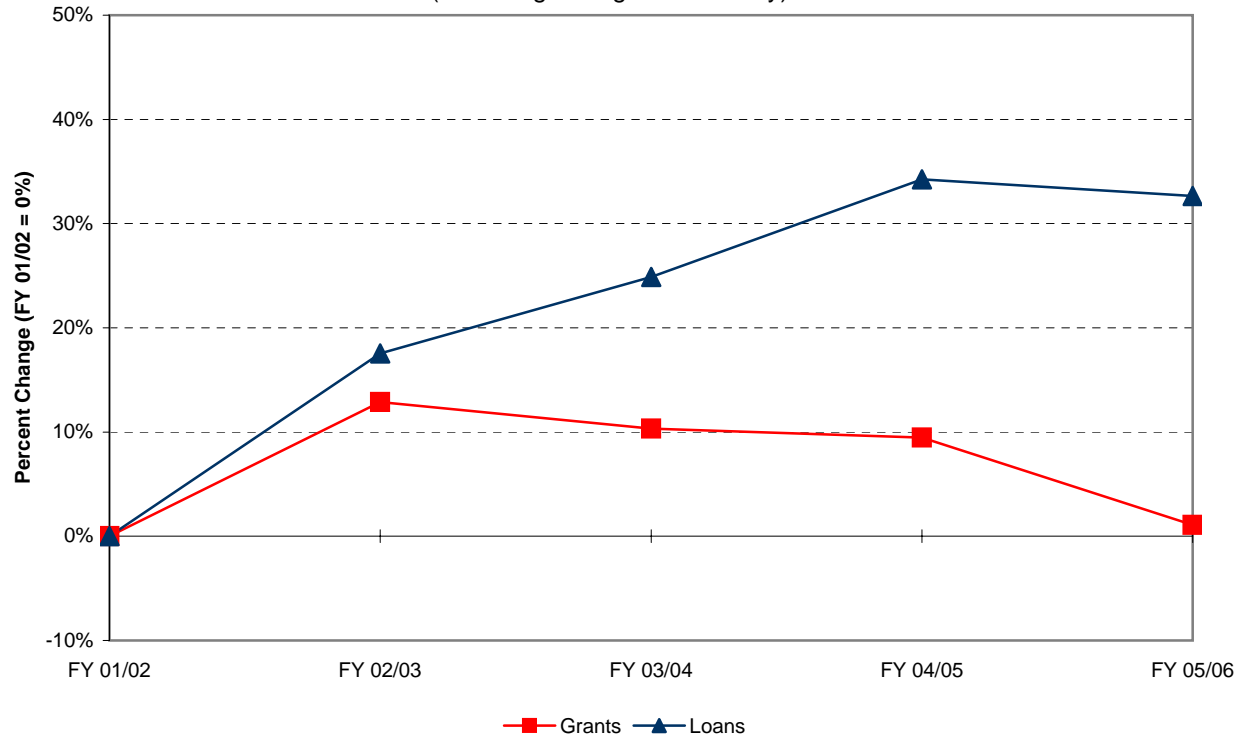
<b>Financial Aid Recipients</b>	FY 01/02	FY 02/03	FY 03/04	FY 04/05	FY 05/06	Percent Change	Percent Change
	#	#	#	#	#	01/02 to 05/06	04/05 to 05/06
Pell Grants	854	924	951	942	907	6.2%	-3.7%
College Work Study	172	201	127	197	149	-13.4%	-24.4%
Perkins Loans	95	163	128	147	103	8.4%	-29.9%
Stafford Loans (total)	2,413	2,649	2,783	2,909	2,783	15.3%	-4.3%
Subsidized	1,422	1,597	1,703	1,839	1,762	23.9%	-4.2%
Un-subsidized	991	1,052	1,080	1,070	1,021	3.0%	-4.6%
SEOG	195	222	211	273	238	22.1%	-12.8%
Parents Loans for Dependent Students	184	296	353	420	462	151.1%	10.0%
Ramapo College Grants (total)	728	971	878	753	643	-11.7%	-14.6%
EOF	95	160	109	124	115	21.1%	-7.3%
Non-EOF	55	39	0	1	4	-92.7%	300.0%
Institutional Grants	578	772	769	628	524	-9.3%	-16.6%
TAG	785	819	827	865	811	3.3%	-6.2%
Educational Opportunity Fund (EOF)	276	267	264	274	270	-2.2%	-1.5%
New Jersey Class Loans	272	339	375	369	310	14.0%	-16.0%
Private Loans	33	76	104	178	318	863.6%	78.7%
<b>Total</b>	<b>6,007</b>	<b>6,927</b>	<b>7,001</b>	<b>7,327</b>	<b>6,994</b>	<b>16.4%</b>	<b>-4.5%</b>

[1] This information is not system-generated. Data is self-reported by unit.

**CUMULATIVE PERCENT CHANGE IN FINANCIAL AID DOLLARS BY SOURCE**  
(excluding College Work Study)



**CUMULATIVE PCT. CHANGE IN NO. OF FINANCIAL AID RECIPIENTS BY SOURCE**  
(excluding College Work Study)





**CAMPUS SECURITY ANNUAL REPORT <sup>[1]</sup>**

<b>Reported Occurrences</b>	00/01	01/02	02/03	03/04	04/05	Percent Change 99/00 to 03/04	Percent Change 02/03 to 03/04
	Criminal Homicide	0	0	0	0	0	N/A
<i>Sexual Offenses:</i>							
Forcible: Rape, Sodomy, Assault (with an object), Fondling	3	7	4	5	12	300.0%	140.0%
Non-Forcible: Incest, Statutory Rape	0	0	0	0	0	N/A	N/A
Robbery	0	2	0	0	1	N/A	N/A
Aggravated Assault	2	1	2	0	2	0.0%	N/A
Burglary	22	21	11	8	19	-13.6%	137.5%
Motor Vehicle Theft	2	4	1	0	0	-100.0%	N/A
Arson	0	0	0	0	0	N/A	N/A
Hate Crimes	0	0	0	0	0	N/A	N/A
<b>Arrests:</b>							
Weapon Law Violation	0	0	2	0	1	N/A	N/A
Drug Abuse Violation	19	7	12	3	4	-78.9%	33.3%
Liquor Law Violation	0	0	0	0	0	N/A	N/A

[1] This information is not system-generated. Data is self-reported by unit. Crime statistics reported using FBI definitions. Figures are the most current available in the Campus Crime Statistics publication of 8/06.

**STUDENT PARTICIPATION IN STUDY ABROAD AND OTHER OFF-CAMPUS PROGRAMS, 2002 TO 2006<sup>[1]</sup>**

All Students	AY 02-03		AY 03-04		AY 04-05		AY 05-06 <sup>[11]</sup>		AY 06-07 <sup>[12]</sup>		Percent Change 02/03 to 06/07	Percent Change 05/06 to 06/07
	No.	Pct.	No.	Pct.	No.	Pct.	No.	Pct.	No.	Pct.		
American Southwest	14	7.8%	21	11.7%	19	8.6%	24	14.0%	0	0.0%	-100.0%	-100.0%
American West [2]	8	4.5%	11	6.1%	9	4.1%	0	0.0%	0	0.0%	-100.0%	N/A
Australia (Macquarie University) [3]	-	-	3	1.7%	6	2.7%	10	5.8%	12	9.0%	N/A	20.0%
China	0	0.0%	0	0.0%	0	0.0%	0	0.0%	1	0.7%	N/A	N/A
Costa Rica [4]	29	16.2%	22	12.3%	21	9.5%	0	0.0%	2	1.5%	-93.1%	N/A
England [5]	63	35.2%	84	46.9%	52	23.5%	69	40.4%	8	6.0%	-87.3%	-88.4%
India [6]	-	-	13	7.3%	10	4.5%	14	8.2%	9	6.7%	N/A	-35.7%
Ireland	19	10.6%	38	21.2%	0	0.0%	1	0.6%	2	1.5%	-89.5%	100.0%
Italy [7]	0	0.0%	3	1.7%	40	18.1%	1	0.6%	6	4.5%	N/A	500.0%
Jamaica	16	8.9%	16	8.9%	0	0.0%	11	6.4%	0	0.0%	-100.0%	-100.0%
Prague	10	5.6%	6	3.4%	8	3.6%	0	0.0%	1	0.7%	-90.0%	N/A
Quebec City	3	1.7%	2	1.1%	3	1.4%	0	0.0%	1	0.7%	-66.7%	N/A
Spain (with NJSCIS)	-	-	-	-	-	-	1	0.6%	4	3.0%	N/A	300.0%
South Africa [8]	10	5.6%	0	0.0%	0	0.0%	0	0.0%	0	0.0%	-100.0%	N/A
Washington D.C. Internship [9]	2	1.1%	2	1.1%	1	0.5%	0	0.0%	0	0.0%	-100.0%	N/A
Other Programs [10]	5	-	0	0.0%	2	0.9%	3	1.8%	11	8.2%	120.0%	266.7%
<b>Total</b>	<b>179</b>		<b>221</b>		<b>171</b>		<b>134</b>		<b>57</b>		<b>-68.2%</b>	<b>-57.5%</b>

[1] This information is not system-generated. Data is self-reported by unit. These numbers include students from both Ramapo College and other campuses.

[2] American West AY 03-04 headcount increased from 10 to 11 due to student who registered after publication of Fall 2003 Institutional Profile.

[3] The Australia (Macquarie University) program is a credit-bearing semester sponsored by Ramapo as of 2004.

[4] The Costa Rica program includes credit-bearing trips (the Intensa Spanish Language program and the Eco-Program).

[5] The England program includes credit-bearing trips as well as the Regent's program semester study.

[6] The India program is a credit-bearing semester sponsored by Ramapo as of 2004.

[7] The Italy program includes credit bearing trips to Rome or Matera.

[8] The South African program includes credit-bearing trips sponsored by Ramapo as of 2001.

[9] The Washington DC program is a credit-bearing semester sponsored by Ramapo. Previously it was included in "Other".

[10] Represents Ramapo student participation in non-Ramapo sponsored programs.

[11] Beginning in Fall 2005, Ramapo programs are conducted through the N.J. State Consortium for International Studies (NJSCIS).

During AY 05-06 only 4 programs were sponsored entirely through Ramapo (American SW, American West, India & Australia).

[12] After Winter 2006, only one program (the India Semester) was offered entirely through Ramapo. Programs continue to be conducted through the N.J. State Consortium for International Studies (NJSCIS).

