

SECTION IV:

DEGREES AWARDED AND

STUDENT OUTCOMES

2006 INSTITUTIONAL PROFILE

TOTAL 2005-06 DEGREES AWARDED = 1,239

By Age

	Bachelor's		Master's		Total	
Less than 20	0	0.0%	0	0.0%	0	0.0%
20 to 24	758	68.7%	1	0.7%	759	61.3%
25 to 29	195	17.7%	42	30.9%	237	19.1%
30 to 39	82	7.4%	37	27.2%	119	9.6%
Greater than 39	68	6.2%	56	41.2%	124	10.0%
	1,103		136		1,239	

By Sex

	Bachelor's		Master's		Total	
Female	694	62.9%	106	77.9%	800	64.6%
Male	409	37.1%	30	22.1%	439	35.4%
	1,103		136		1,239	

By Ethnicity

	Bachelor's		Master's		Total	
American Indian/Native Alaskan	4	0.4%	1	0.7%	5	0.4%
Asian/Pacific Islander	56	5.1%	1	0.7%	57	4.6%
Black, non-Hispanic	78	7.1%	6	4.4%	84	6.8%
Hispanic	81	7.3%	5	3.7%	86	6.9%
White, non-Hispanic	884	80.1%	123	90.4%	1,007	81.3%
	1,103		136		1,239	

By Citizenship

	Bachelor's		Master's		Total	
U.S. Citizen/Permanent Resident	1,060	96.1%	134	98.5%	1,194	96.4%
non-Citizen/non-Resident	43	3.9%	2	1.5%	45	3.6%
	1,103		136		1,239	

By Ethnicity and Citizenship

	Bachelor's		Master's		Total	
American Indian/Native Alaskan	4	0.4%	1	0.7%	5	0.4%
Asian/Pacific Islander	43	3.9%	0	0.0%	43	3.5%
Black, non-Hispanic	71	6.4%	6	4.4%	77	6.2%
Hispanic	79	7.2%	5	3.7%	84	6.8%
White, non-Hispanic	863	78.2%	122	89.7%	985	79.5%
Nonresident Alien	43	3.9%	2	1.5%	45	3.6%
	1,103		136		1,239	

By Status When First Admitted

	Bachelor's		Master's		Total	
Regular Admit	486	44.1%	136	100.0%	622	50.2%
Special Admit	46	4.2%	0	0.0%	46	3.7%
EOF Admit	41	3.7%	0	0.0%	41	3.3%
Transfer Admit	521	47.2%	0	0.0%	521	42.1%
EOF Transfer Admit	9	0.8%	0	0.0%	9	0.7%
	1,103		136		1,239	

By Degree Type

	Bachelor's		Master's		Total	
Bachelor of Arts (BA)	672	60.9%	0	0.0%	672	54.2%
Bachelor of Science (BS)	336	30.5%	0	0.0%	336	27.1%
Bachelor of Science in Nursing (BSN)	65	5.9%	0	0.0%	65	5.2%
Bachelor of Social Work (BSW)	30	2.7%	0	0.0%	30	2.4%
Master of Arts in Liberal Studies (MA)	0	0.0%	11	8.1%	11	0.9%
Master of Business Administration (MBA)	0	0.0%	14	10.3%	14	1.1%
Master of Science in Educational Technology (MS)	0	0.0%	101	74.3%	101	8.2%
Master of Science in Nursing (MSN)	0	0.0%	10	7.4%	10	0.8%
	1,103		136		1,239	

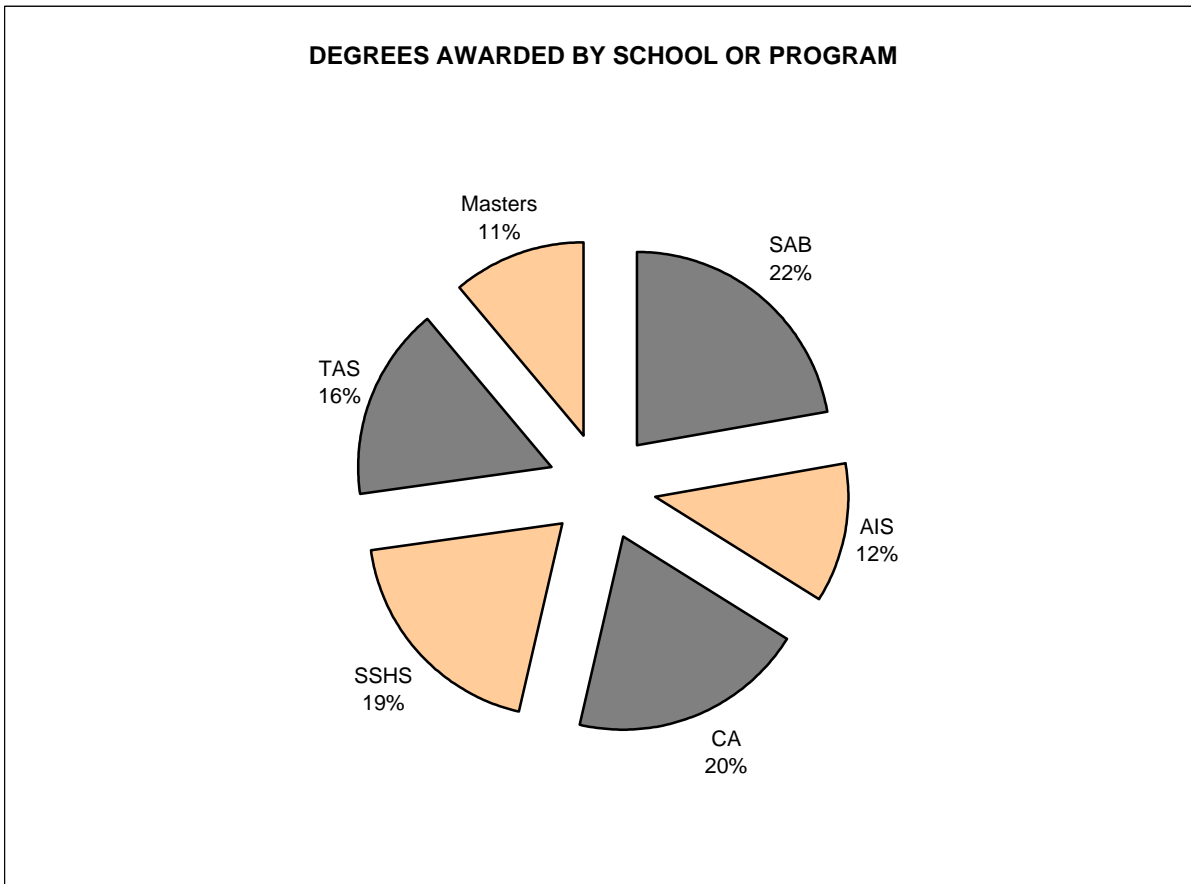
TOTAL 2005-06 DEGREES AWARDED = 1,239

	Bachelor of Arts (BA)		Bachelor of Science (BS)		Bachelor of Science in Nursing (BSN)		Bachelor of Social Work (BSW)		Master of Arts in Liberal Studies (MA)		Master of Business Admin. (MBA)		Master of Science in Ed. Tech. (MS)		Master of Science in Nursing (MSN)	
	Number	Percent	Number	Percent	Number	Percent	Number	Percent	Number	Percent	Number	Percent	Number	Percent	Number	Percent
By Age																
Less than 20	0	0.0%	0	0.0%	0	0.0%	0	0.0%	0	0.0%	0	0.0%	0	0.0%	0	0.0%
20 to 24	497	74.0%	219	65.2%	30	46.2%	12	40.0%	0	0.0%	0	0.0%	1	1.0%	0	0.0%
25 to 29	113	16.8%	71	21.1%	7	10.8%	4	13.3%	2	18.2%	9	64.3%	30	29.7%	1	10.0%
30 to 39	37	5.5%	27	8.0%	12	18.5%	6	20.0%	4	36.4%	3	21.4%	27	26.7%	3	30.0%
> 39	25	3.7%	19	5.7%	16	24.6%	8	26.7%	5	45.5%	2	14.3%	43	42.6%	6	60.0%
	672		336		65		30		11		14		101		10	
By Sex																
Female	447	66.5%	157	46.7%	62	95.4%	28	93.3%	9	81.8%	6	42.9%	81	80.2%	10	100.0%
Male	225	33.5%	179	53.3%	3	4.6%	2	6.7%	2	18.2%	8	57.1%	20	19.8%	0	0.0%
	672		336		65		30		11		14		101		10	
By Ethnicity																
Am. Ind./Nat. Al.	3	0.4%	1	0.3%	0	0.0%	0	0.0%	0	0.0%	0	0.0%	1	1.0%	0	0.0%
Asian/Pac. Is.	19	2.8%	28	8.3%	9	13.8%	0	0.0%	0	0.0%	0	0.0%	1	1.0%	0	0.0%
Black, non-Hisp.	40	6.0%	22	6.5%	11	16.9%	5	16.7%	0	0.0%	0	0.0%	4	4.0%	2	20.0%
Hispanic	52	7.7%	24	7.1%	2	3.1%	3	10.0%	0	0.0%	0	0.0%	4	4.0%	1	10.0%
White, non-Hisp.	558	83.0%	261	77.7%	43	66.2%	22	73.3%	11	100.0%	14	100.0%	91	90.1%	7	70.0%
	672		336		65		30		11		14		101		10	
By Citizenship																
U.S. Citizen	652	97.0%	316	94.0%	63	96.9%	29	96.7%	10	90.9%	14	100.0%	100	99.0%	10	100.0%
non-Citizen	20	3.0%	20	6.0%	2	3.1%	1	3.3%	1	9.1%	0	0.0%	1	1.0%	0	0.0%
	672		336		65		30		11		14		101		10	
By Ethnicity & Citizenship																
Am. Ind./Nat. Al.	3	0.4%	1	0.3%	0	0.0%	0	0.0%	0	0.0%	0	0.0%	1	1.0%	0	0.0%
Asian/Pac. Is.	14	2.1%	22	6.5%	7	10.8%	0	0.0%	0	0.0%	0	0.0%	0	0.0%	0	0.0%
Black, non-Hisp.	40	6.0%	16	4.8%	11	16.9%	4	13.3%	0	0.0%	0	0.0%	4	4.0%	2	20.0%
Hispanic	50	7.4%	24	7.1%	2	3.1%	3	10.0%	0	0.0%	0	0.0%	4	4.0%	1	10.0%
White, non-Hisp.	545	81.1%	253	75.3%	43	66.2%	22	73.3%	10	90.9%	14	100.0%	91	90.1%	7	70.0%
Nonresident Alien	20	3.0%	20	6.0%	2	3.1%	1	3.3%	1	9.1%	0	0.0%	1	1.0%	0	0.0%
	672		336		65		30		11		14		101		10	
By Initial Admit Type																
Regular	310	46.1%	149	44.3%	19	29.2%	8	26.7%	11	100.0%	14	100.0%	101	100.0%	10	100.0%
Special	37	5.5%	6	1.8%	2	3.1%	1	3.3%	0	0.0%	0	0.0%	0	0.0%	0	0.0%
EOF	28	4.2%	10	3.0%	2	3.1%	1	3.3%	0	0.0%	0	0.0%	0	0.0%	0	0.0%
Transfer	292	43.5%	167	49.7%	42	64.6%	20	66.7%	0	0.0%	0	0.0%	0	0.0%	0	0.0%
EOF Transfer	5	0.7%	4	1.2%	0	0.0%	0	0.0%	0	0.0%	0	0.0%	0	0.0%	0	0.0%
	672		336		65		30		11		14		101		10	

TOTAL 2005-06 DEGREES AWARDED = 1,239

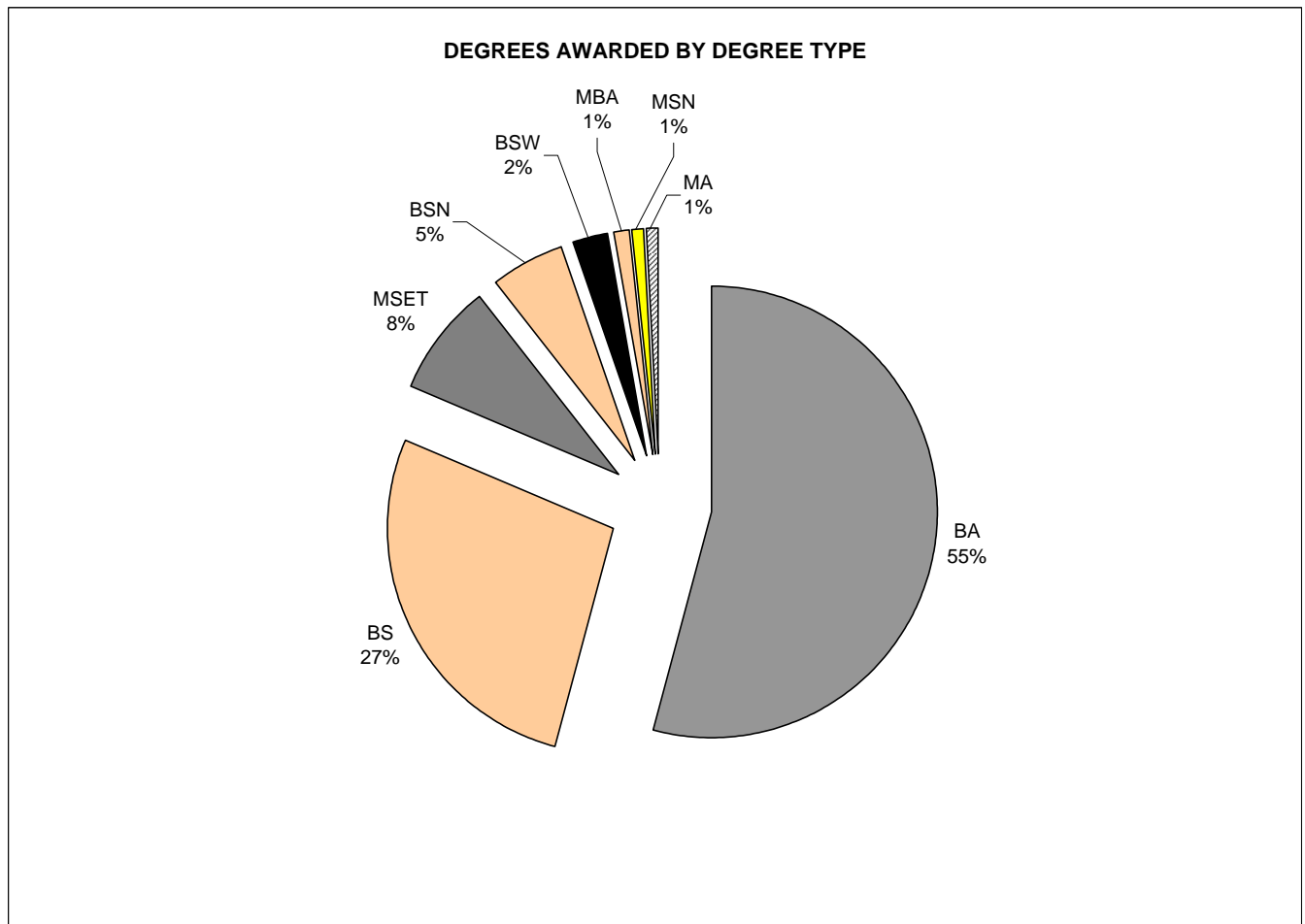
By School and Combined Graduate Programs

Administration and Business	277	22.4%
American and International Studies	143	11.5%
Contemporary Arts	244	19.7%
Social Science and Human Services	236	19.0%
Theoretical and Applied Sciences	203	16.4%
Master's Degree Programs (combined)	136	11.0%



TOTAL 2005-06 DEGREES AWARDED = 1,239

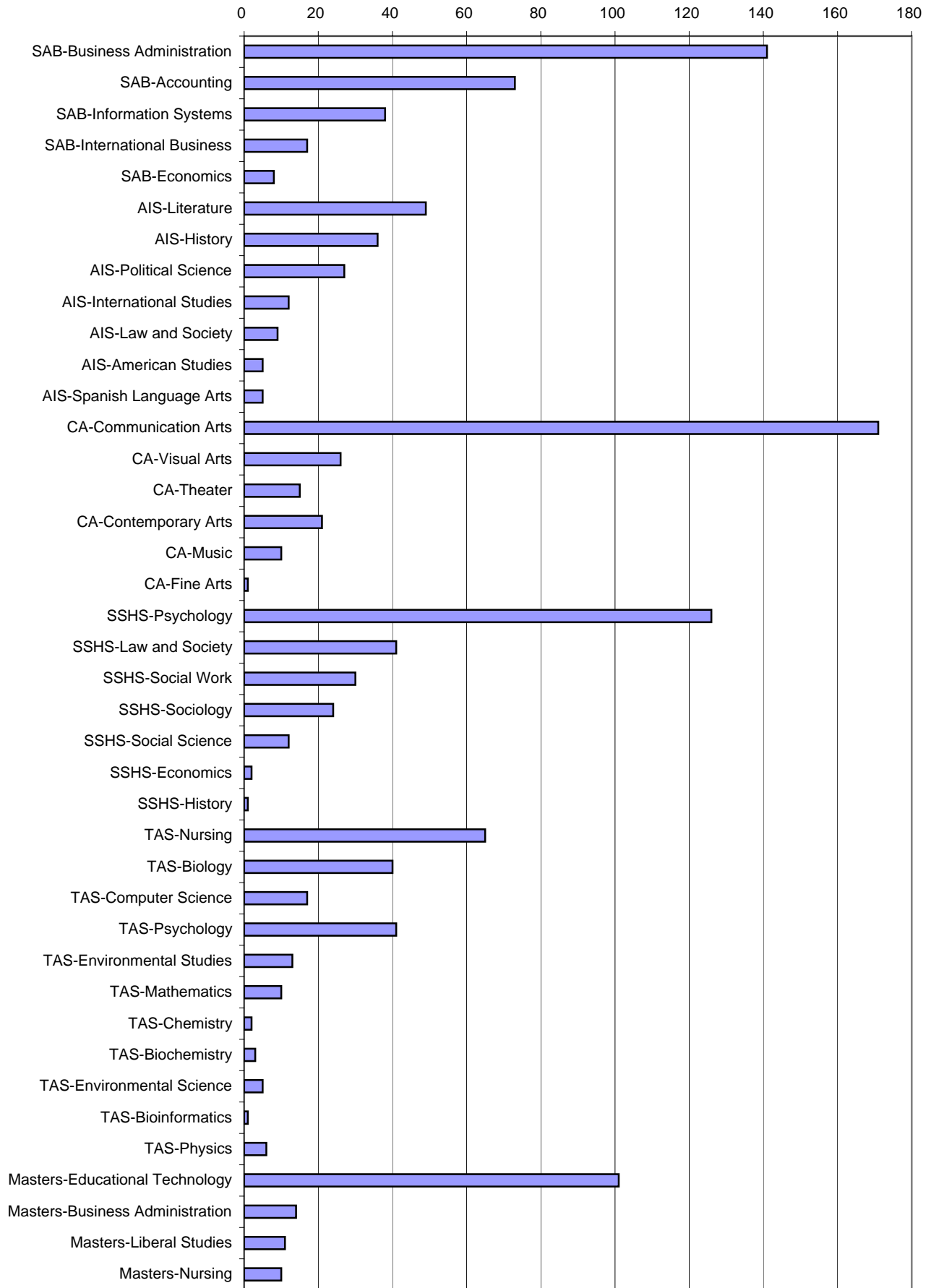
School or Program	BA		BS		BSN		BSW		MA		MBA		MSET		MSN	
	No.	Pct.	No.	Pct.	No.	Pct.	No.	Pct.	No.	Pct.	No.	Pct.	No.	Pct.	No.	Pct.
Admin. & Business	25	3.7%	252	75.0%	0	0.0%	0	0.0%	0	0.0%	0	0.0%	0	0.0%	0	0.0%
Amer. & Int'l Studies	143	21.3%	0	0.0%	0	0.0%	0	0.0%	0	0.0%	0	0.0%	0	0.0%	0	0.0%
Contemporary Arts	244	36.3%	0	0.0%	0	0.0%	0	0.0%	0	0.0%	0	0.0%	0	0.0%	0	0.0%
Soc. Sci. & Hum. Serv.	206	30.7%	0	0.0%	0	0.0%	30	100.0%	0	0.0%	0	0.0%	0	0.0%	0	0.0%
Theoretical & App. Sci.	54	8.0%	84	25.0%	65	100.0%	0	0.0%	0	0.0%	0	0.0%	0	0.0%	0	0.0%
Grad. Liberal Studies	0	0.0%	0	0.0%	0	0.0%	0	0.0%	11	100.0%	0	0.0%	0	0.0%	0	0.0%
Grad. Busn. Admn.	0	0.0%	0	0.0%	0	0.0%	0	0.0%	0	0.0%	14	100.0%	0	0.0%	0	0.0%
Grad. Educ. Tech. (MSET)	0	0.0%	0	0.0%	0	0.0%	0	0.0%	0	0.0%	0	0.0%	101	100.0%	0	0.0%
Grad. Nursing (MSN)	0	0.0%	0	0.0%	0	0.0%	0	0.0%	0	0.0%	0	0.0%	0	0.0%	10	100.0%
	672		336		65		30		11		14		101		10	



By School and Major (with Graduate Programs)

SAB	Accounting	73	5.9%
	Business Administration	141	11.4%
	Economics	8	0.6%
	Information Systems	38	3.1%
	International Business	17	1.4%
AIS	American Studies	5	0.4%
	History	36	2.9%
	International Studies	12	1.0%
	Law and Society	9	0.7%
	Literature	49	4.0%
	Political Science	27	2.2%
Spanish Language Arts	5	0.4%	
CA	Communication Arts	171	13.8%
	Contemporary Arts	21	1.7%
	Fine Arts	1	0.1%
	Music	10	0.8%
	Theater	15	1.2%
	Visual Arts	26	2.1%
SSHS	Economics	2	0.2%
	History	1	0.1%
	Law and Society	41	3.3%
	Psychology	126	10.2%
	Social Science	12	1.0%
	Social Work	30	2.4%
Sociology	24	1.9%	
TAS	Biochemistry	3	0.2%
	Bioinformatics	1	0.1%
	Biology	40	3.2%
	Chemistry	2	0.2%
	Computer Science	17	1.4%
	Environmental Science	5	0.4%
	Environmental Studies	13	1.0%
	Mathematics	10	0.8%
	Nursing	65	5.2%
	Physics	6	0.5%
	Psychology	41	3.3%
MASTERS	Liberal Studies	11	0.9%
	Business Administration	14	1.1%
	Educational Technology	101	8.2%
	Nursing	10	0.8%

DEGREES AWARDED 2005-06 BY SCHOOL AND MAJOR/PROGRAM



TOTAL 2005-06 DEGREES AWARDED = 1,239

By Major or Graduate Program

Accounting	73	5.9%
American Studies	5	0.4%
Biochemistry	3	0.2%
Bioinformatics	1	0.1%
Biology	40	3.2%
Business Administration	141	11.4%
Chemistry	2	0.2%
Communication Arts	171	13.8%
Computer Science	17	1.4%
Contemporary Arts	21	1.7%
Economics [1]	10	0.8%
Environmental Science	5	0.4%
Environmental Studies	13	1.0%
Fine Arts	1	0.1%
History [2]	37	3.0%
Information Systems	38	3.1%
International Business	17	1.4%
International Studies	12	1.0%
Law and Society [3]	50	4.0%
Literature	49	4.0%
Masters in Business Administration	14	1.1%
Masters in Educational Technology	101	8.2%
Masters in Liberal Studies	11	0.9%
Masters in Nursing	10	0.8%
Mathematics	10	0.8%
Music	10	0.8%
Nursing	65	5.2%
Physics	6	0.5%
Political Science	27	2.2%
Psychology [4]	167	13.5%
Social Science	12	1.0%
Social Work	30	2.4%
Sociology	24	1.9%
Spanish Language Studies	5	0.4%
Theater	15	1.2%
Visual Arts	26	2.1%
	1,239	100.00%

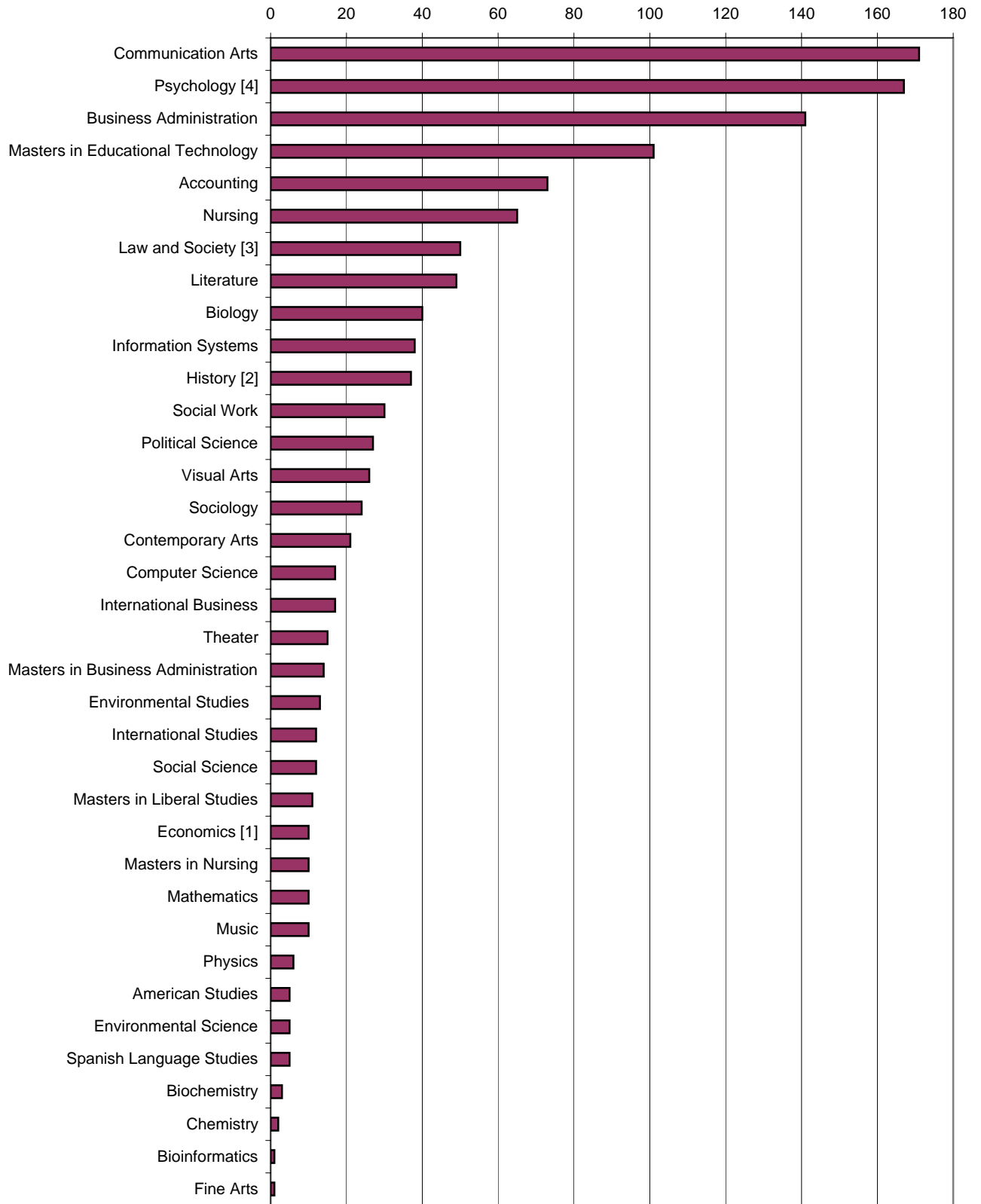
[1] Includes students from SAB and SSHS.

[2] Includes students from AIS and SSHS.

[3] Includes students from AIS and SSHS.

[4] Includes students from TAS and SSHS.

2005-06 DEGREES AWARDED BY MAJOR

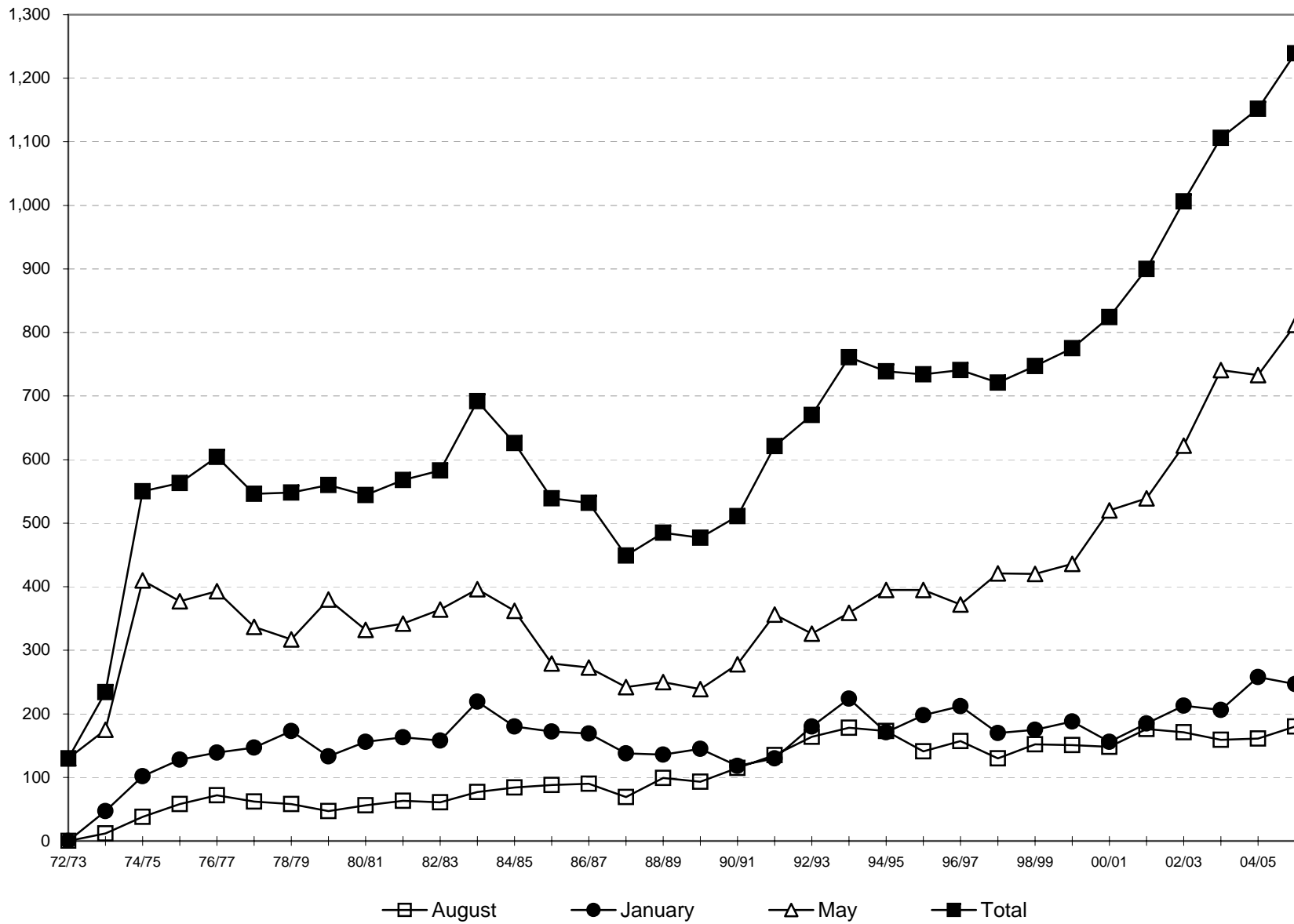


TOTAL DEGREES AWARDED, 1972 TO 2005-06*

Year	AUGUST DEGREES			JANUARY DEGREES			MAY DEGREES			TOTAL FISCAL YEAR DEGREES			CUMULATIVE DEGREES AWARDED SINCE 1972-73
	Number of Degrees Awarded	Percent Change From Previous August	Cumulative Percent Change From Aug. 1973	Number of Degrees Awarded	Percent Change From Previous January	Cumulative Percent Change From Jan. 1974	Number of Degrees Awarded	Percent Change From Previous May	Cumulative Percent Change From May 1973	Number of Degrees Awarded	Percent Change From Previous Fiscal Year	Cumulative Percent Change From 1972-73	
1972-73	N/A	N/A	N/A	N/A	N/A	N/A	130	N/A	0.0%	130	N/A	0.0%	130
1973-74	12	N/A	0.0%	47	N/A	0.0%	175	34.6%	34.6%	234	80.0%	80.0%	364
1974-75	38	216.7%	216.7%	102	117.0%	117.0%	410	134.3%	215.4%	550	135.0%	323.1%	914
1975-76	58	52.6%	383.3%	128	25.5%	172.3%	377	-8.0%	190.0%	563	2.4%	333.1%	1,477
1976-77	72	24.1%	500.0%	139	8.6%	195.7%	393	4.2%	202.3%	604	7.3%	364.6%	2,081
1977-78	62	-13.9%	416.7%	147	5.8%	212.8%	337	-14.2%	159.2%	546	-9.6%	320.0%	2,627
1978-79	58	-6.5%	383.3%	173	17.7%	268.1%	317	-5.9%	143.8%	548	0.4%	321.5%	3,175
1979-80	47	-19.0%	291.7%	133	-23.1%	183.0%	380	19.9%	192.3%	560	2.2%	330.8%	3,735
1980-81	56	19.1%	366.7%	156	17.3%	231.9%	332	-12.6%	155.4%	544	-2.9%	318.5%	4,279
1981-82	63	12.5%	425.0%	163	4.5%	246.8%	342	3.0%	163.1%	568	4.4%	336.9%	4,847
1982-83	61	-3.2%	408.3%	158	-3.1%	236.2%	364	6.4%	180.0%	583	2.6%	348.5%	5,430
1983-84	77	26.2%	541.7%	219	38.6%	366.0%	396	8.8%	204.6%	692	18.7%	432.3%	6,122
1984-85	84	9.1%	600.0%	180	-17.8%	283.0%	362	-8.6%	178.5%	626	-9.5%	381.5%	6,748
1985-86	88	4.8%	633.3%	172	-4.4%	266.0%	279	-22.9%	114.6%	539	-13.9%	314.6%	7,287
1986-87	90	2.3%	650.0%	169	-1.7%	259.6%	273	-2.2%	110.0%	532	-1.3%	309.2%	7,819
1987-88	69	-23.3%	475.0%	138	-18.3%	193.6%	242	-11.4%	86.2%	449	-15.6%	245.4%	8,268
1988-89	99	43.5%	725.0%	136	-1.4%	189.4%	250	3.3%	92.3%	485	8.0%	273.1%	8,753
1989-90	93	-6.1%	675.0%	145	6.6%	208.5%	239	-4.4%	83.8%	477	-1.6%	266.9%	9,230
1990-91	115	23.7%	858.3%	118	-18.6%	151.1%	278	16.3%	113.8%	511	7.1%	293.1%	9,741
1991-92	135	17.4%	1025.0%	130	10.2%	176.6%	356	28.1%	173.8%	621	21.5%	377.7%	10,362
1992-93	164	21.5%	1266.7%	180	38.5%	283.0%	326	-8.4%	150.8%	670	7.9%	415.4%	11,032
1993-94	178	8.5%	1383.3%	224	24.4%	376.6%	359	10.1%	176.2%	761	13.6%	485.4%	11,793
1994-95	173	-2.8%	1341.7%	171	-23.7%	263.8%	395	10.0%	203.8%	739	-2.9%	468.5%	12,532
1995-96	141	-18.5%	1075.0%	198	15.8%	321.3%	395	0.0%	203.8%	734	-0.7%	464.6%	13,266
1996-97	157	11.3%	1208.3%	212	7.1%	351.1%	372	-5.8%	186.2%	741	1.0%	470.0%	14,007
1997-98	130	-17.2%	983.3%	170	-19.8%	261.7%	421	13.2%	223.8%	721	-2.7%	454.6%	14,728
1998-99	152	16.9%	1166.7%	175	2.9%	272.3%	420	-0.2%	223.1%	747	3.6%	474.6%	15,475
1999-00	151	-0.7%	1158.3%	188	7.4%	300.0%	436	3.8%	235.4%	775	3.7%	496.2%	16,250
2000-01	148	-2.0%	1133.3%	156	-17.0%	231.9%	520	19.3%	300.0%	824	6.3%	533.8%	17,074
2001-02	176	18.9%	1366.7%	185	18.6%	293.6%	539	3.7%	314.6%	900	9.2%	592.3%	17,974
2002-03	171	-2.8%	1325.0%	213	15.1%	353.2%	622	15.4%	378.5%	1,006	11.8%	673.8%	18,980
2003-04	159	-7.0%	1225.0%	206	-3.3%	338.3%	741	19.1%	470.0%	1,106	9.9%	750.8%	20,086
2004-05	161	1.3%	1241.7%	258	25.2%	448.9%	733	-1.1%	463.8%	1,152	4.2%	786.2%	21,238
2005-06	180	11.8%	1400.0%	247	-4.3%	425.5%	812	10.8%	524.6%	1,239	7.6%	853.1%	22,477

* Degrees are reported on a fiscal year basis. For example, 2005-06 graduates include degree recipients from August 2005, January 2006, and May 2006.

DEGREES AWARDED BY FISCAL YEAR, 1972-73 TO 2005-06



DEGREES AWARDED BY AGE, 2001-02 TO 2005-06

	2001-02		2002-03		2003-04		2004-05		2005-06		Pct. Change 01/02 to 05/06	Pct. Change 04/05 to 05/06
	No.	Pct.	No.	Pct.	No.	Pct.	No.	Pct.	No.	Pct.		
Bachelor's												
Less Than 20	0	0.0%	0	0.0%	0	0.0%	0	0.0%	0	0.0%	N/A	N/A
20 to 24	492	59.1%	557	61.3%	652	64.6%	695	66.4%	758	68.7%	54.1%	9.1%
25 to 29	169	20.3%	184	20.3%	208	20.6%	203	19.4%	195	17.7%	15.4%	-3.9%
30 to 39	91	10.9%	90	9.9%	76	7.5%	83	7.9%	82	7.4%	-9.9%	-1.2%
40 and Over	81	9.7%	77	8.5%	74	7.3%	65	6.2%	68	6.2%	-16.0%	4.6%
Total	833		908		1,010		1,046		1,103		32.4%	5.4%

	2001-02		2002-03		2003-04		2004-05		2005-06		Pct. Change 01/02 to 05/06	Pct. Change 04/05 to 05/06
	No.	Pct.	No.	Pct.	No.	Pct.	No.	Pct.	No.	Pct.		
Master's												
Less Than 20	0	0.0%	0	0.0%	0	0.0%	0	0.0%	0	0.0%	N/A	N/A
20 to 24	1	1.5%	0	0.0%	1	1.0%	1	0.9%	1	0.7%	0.0%	0.0%
25 to 29	19	28.4%	20	20.4%	29	30.2%	34	32.1%	42	30.9%	121.1%	23.5%
30 to 39	27	40.3%	33	33.7%	38	39.6%	34	32.1%	37	27.2%	37.0%	8.8%
40 and Over	20	29.9%	45	45.9%	28	29.2%	37	34.9%	56	41.2%	180.0%	51.4%
Total	67		98		96		106		136		103.0%	28.3%

Total	2001-02		2002-03		2003-04		2004-05		2005-06		Pct. Change 01/02 to 05/06	Pct. Change 04/05 to 05/06
	No.	Pct.	No.	Pct.	No.	Pct.	No.	Pct.	No.	Pct.		
Less Than 20	0	0.0%	0	0.0%	0	0.0%	0	0.0%	0	0.0%	N/A	N/A
20 to 24	493	54.8%	557	55.4%	653	59.0%	696	60.4%	759	61.3%	54.0%	9.1%
25 to 29	188	20.9%	204	20.3%	237	21.4%	237	20.6%	237	19.1%	26.1%	0.0%
30 to 39	118	13.1%	123	12.2%	114	10.3%	117	10.2%	119	9.6%	0.8%	1.7%
40 and Over	101	11.2%	122	12.1%	102	9.2%	102	8.9%	124	10.0%	22.8%	21.6%
Total	900		1,006		1,106		1,152		1,239		37.7%	7.6%

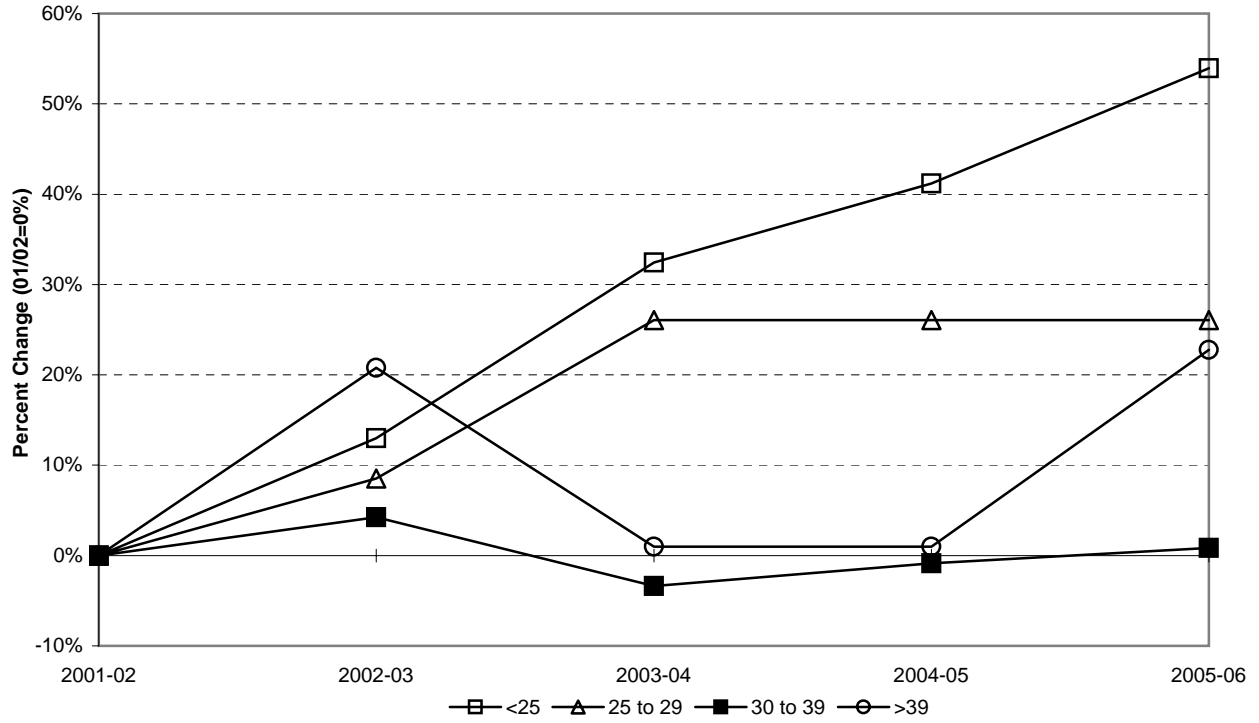
DEGREES AWARDED BY SEX, 2001-02 TO 2005-06

	2001-02		2002-03		2003-04		2004-05		2005-06		Pct. Change 01/02 to 05/06	Pct. Change 04/05 to 05/06
	No.	Pct.	No.	Pct.	No.	Pct.	No.	Pct.	No.	Pct.		
Bachelor's												
Female	502	60.3%	597	65.7%	604	59.8%	671	64.1%	694	62.9%	38.2%	3.4%
Male	331	39.7%	311	34.3%	406	40.2%	375	35.9%	409	37.1%	23.6%	9.1%
Total	833		908		1,010		1,046		1,103		32.4%	5.4%

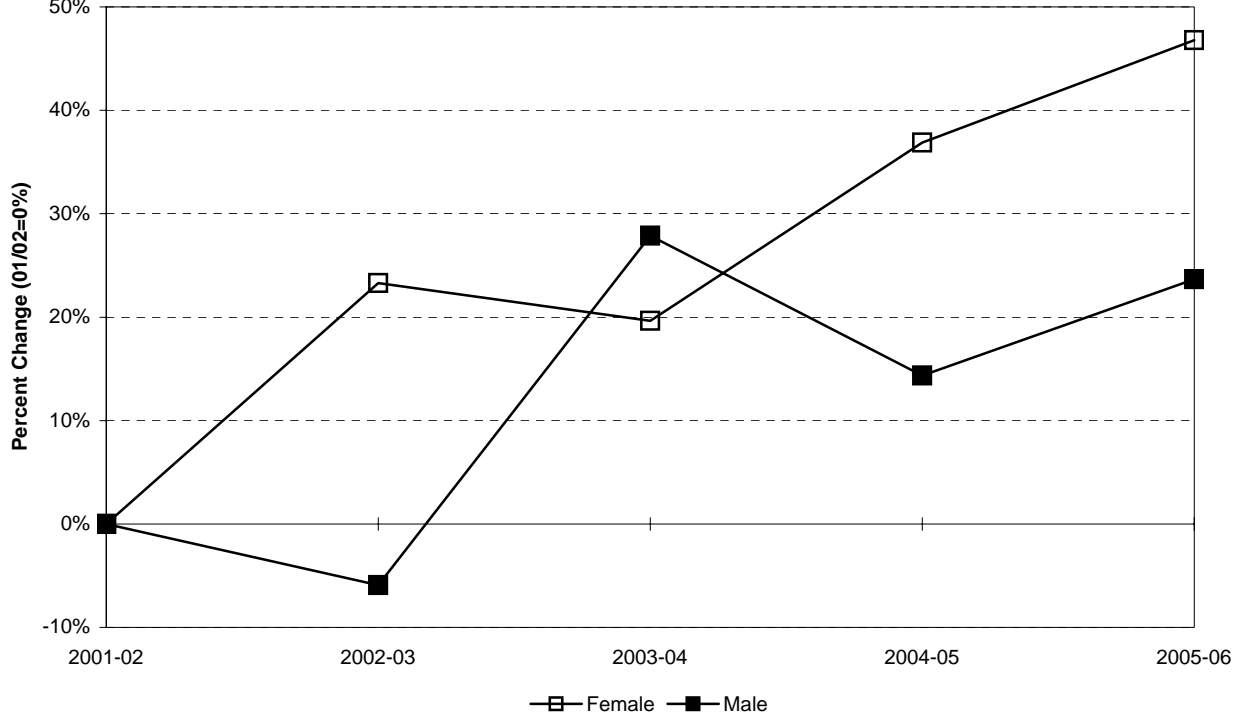
	2001-02		2002-03		2003-04		2004-05		2005-06		Pct. Change 01/02 to 05/06	Pct. Change 04/05 to 05/06
	No.	Pct.	No.	Pct.	No.	Pct.	No.	Pct.	No.	Pct.		
Master's												
Female	43	64.2%	75	76.5%	48	50.0%	75	70.8%	106	77.9%	146.5%	41.3%
Male	24	35.8%	23	23.5%	48	50.0%	31	29.2%	30	22.1%	25.0%	-3.2%
Total	67		98		96		106		136		103.0%	28.3%

Total	2001-02		2002-03		2003-04		2004-05		2005-06		Pct. Change 01/02 to 05/06	Pct. Change 04/05 to 05/06
	No.	Pct.	No.	Pct.	No.	Pct.	No.	Pct.	No.	Pct.		
Female	545	60.6%	672	66.8%	652	59.0%	746	64.8%	800	64.6%	46.8%	7.2%
Male	355	39.4%	334	33.2%	454	41.0%	406	35.2%	439	35.4%	23.7%	8.1%
Total	900		1,006		1,106		1,152		1,239		37.7%	7.6%

CUMULATIVE PERCENT CHANGE IN DEGREES AWARDED BY AGE



CUMULATIVE PERCENT CHANGE IN DEGREES AWARDED BY SEX



DEGREES AWARDED BY ETHNICITY, 2001-02 TO 2005-06

Bachelor's	2001-02		2002-03		2003-04		2004-05		2005-06		Pct. Change 01/02 to 05/06	Pct. Change 04/05 to 05/06
	No.	Pct.	No.	Pct.	No.	Pct.	No.	Pct.	No.	Pct.		
American Indian/Nat. Al.	1	0.1%	5	0.6%	1	0.1%	2	0.2%	4	0.4%	300.0%	100.0%
Asian/Pacific Islander	56	6.7%	48	5.3%	54	5.3%	64	6.1%	56	5.1%	0.0%	-12.5%
Black, non-Hispanic	60	7.2%	65	7.2%	61	6.0%	66	6.3%	78	7.1%	30.0%	18.2%
Hispanic	62	7.4%	72	7.9%	61	6.0%	60	5.7%	81	7.3%	30.6%	35.0%
White, non-Hispanic	654	78.5%	718	79.1%	833	82.5%	854	81.6%	884	80.1%	35.2%	3.5%
Total	833		908		1,010		1,046		1,103		32.4%	5.4%

Master's	2001-02		2002-03		2003-04		2004-05		2005-06		Pct. Change 01/02 to 05/06	Pct. Change 04/05 to 05/06
	No.	Pct.	No.	Pct.	No.	Pct.	No.	Pct.	No.	Pct.		
American Indian/Nat. Al.	1	1.5%	1	1.0%	0	0.0%	0	0.0%	1	0.7%	0.0%	N/A
Asian/Pacific Islander	1	1.5%	0	0.0%	9	9.4%	2	1.9%	1	0.7%	0.0%	-50.0%
Black, non-Hispanic	13	19.4%	3	3.1%	2	2.1%	4	3.8%	6	4.4%	-53.8%	50.0%
Hispanic	1	1.5%	1	1.0%	1	1.0%	3	2.8%	5	3.7%	400.0%	66.7%
White, non-Hispanic	51	76.1%	93	94.9%	84	87.5%	97	91.5%	123	90.4%	141.2%	26.8%
Total	67		98		96		106		136		103.0%	28.3%

Total	2001-02		2002-03		2003-04		2004-05		2005-06		Pct. Change 01/02 to 05/06	Pct. Change 04/05 to 05/06
	No.	Pct.	No.	Pct.	No.	Pct.	No.	Pct.	No.	Pct.		
American Indian/Nat. Al.	2	0.2%	6	0.6%	1	0.1%	2	0.2%	5	0.4%	150.0%	150.0%
Asian/Pacific Islander	57	6.3%	48	4.8%	63	5.7%	66	5.7%	57	4.6%	0.0%	-13.6%
Black, non-Hispanic	73	8.1%	68	6.8%	63	5.7%	70	6.1%	84	6.8%	15.1%	20.0%
Hispanic	63	7.0%	73	7.3%	62	5.6%	63	5.5%	86	6.9%	36.5%	36.5%
White, non-Hispanic	705	78.3%	811	80.6%	917	82.9%	951	82.6%	1,007	81.3%	42.8%	5.9%
Total	900		1,006		1,106		1,152		1,239		37.7%	7.6%



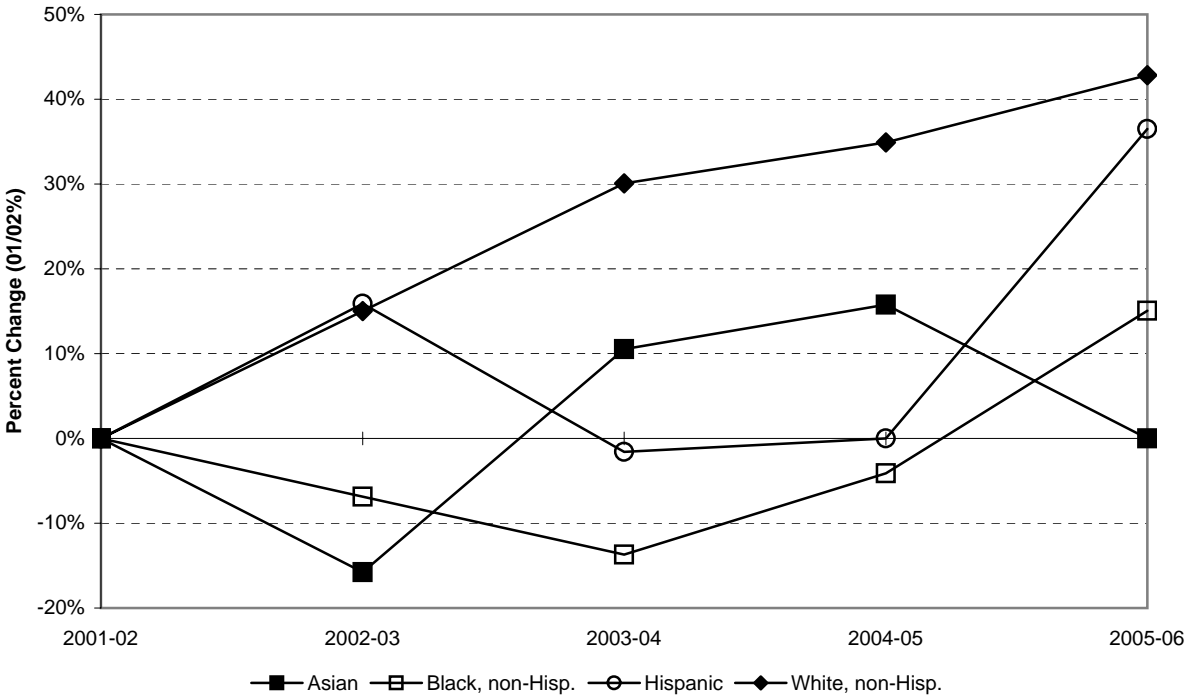
DEGREES AWARDED BY INITIAL ADMISSIONS TYPE, 2001-02 TO 2005-06

Bachelor's	2001-02		2002-03		2003-04		2004-05		2005-06		Pct. Change 01/02 to 05/06	Pct. Change 04/05 to 05/06
	No.	Pct.	No.	Pct.	No.	Pct.	No.	Pct.	No.	Pct.		
Regular	326	39.1%	337	37.1%	442	43.8%	450	43.0%	486	44.1%	49.1%	8.0%
EOF non-Transfer	49	5.9%	45	5.0%	34	3.4%	41	3.9%	41	3.7%	-16.3%	0.0%
EOF Transfer	8	1.0%	5	0.6%	10	1.0%	9	0.9%	9	0.8%	12.5%	0.0%
Special	29	3.5%	28	3.1%	35	3.5%	39	3.7%	46	4.2%	58.6%	17.9%
Transfer	421	50.5%	493	54.3%	489	48.4%	507	48.5%	521	47.2%	23.8%	2.8%
Total	833		908		1,010		1,046		1,103		32.4%	5.4%

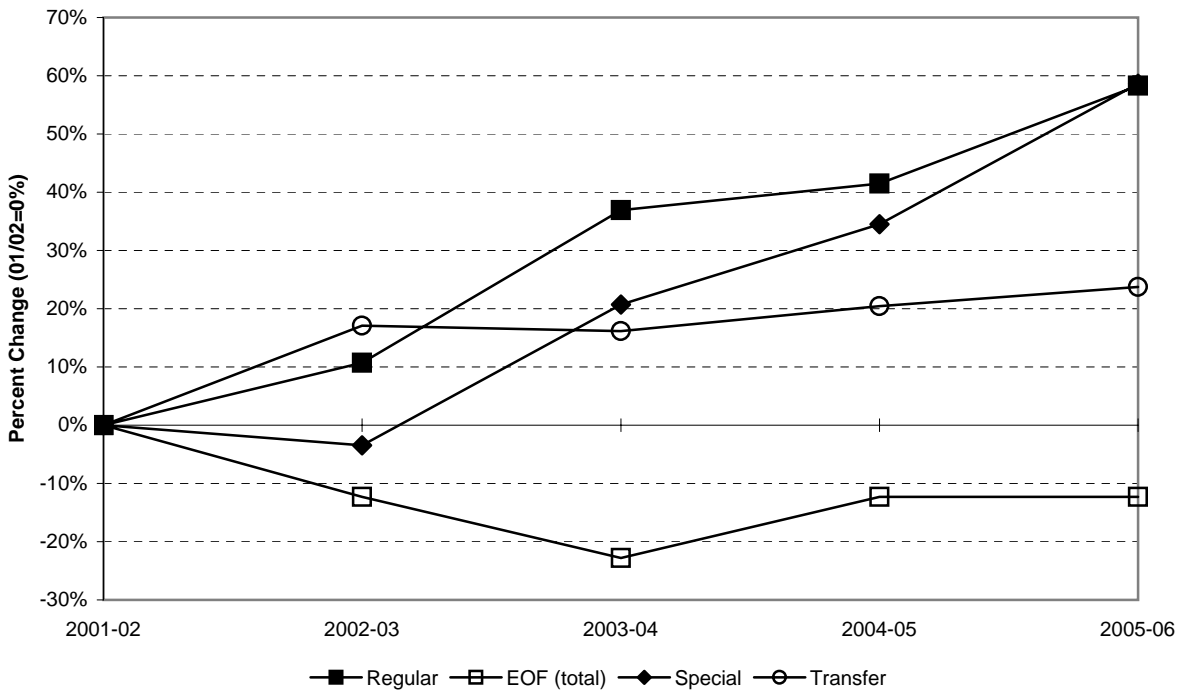
Master's	2001-02		2002-03		2003-04		2004-05		2005-06		Pct. Change 01/02 to 05/06	Pct. Change 04/05 to 05/06
	No.	Pct.	No.	Pct.	No.	Pct.	No.	Pct.	No.	Pct.		
Regular	67	100.0%	98	100.0%	96	100.0%	106	100.0%	136	100.0%	103.0%	28.3%
EOF non-Transfer	0	0.0%	0	0.0%	0	0.0%	0	0.0%	0	0.0%	N/A	N/A
EOF Transfer	0	0.0%	0	0.0%	0	0.0%	0	0.0%	0	0.0%	N/A	N/A
Special	0	0.0%	0	0.0%	0	0.0%	0	0.0%	0	0.0%	N/A	N/A
Transfer	0	0.0%	0	0.0%	0	0.0%	0	0.0%	0	0.0%	N/A	N/A
Total	67		98		96		106		136		103.0%	28.3%

Total	2001-02		2002-03		2003-04		2004-05		2005-06		Pct. Change 01/02 to 05/06	Pct. Change 04/05 to 05/06
	No.	Pct.	No.	Pct.	No.	Pct.	No.	Pct.	No.	Pct.		
Regular	393	43.7%	435	43.2%	538	48.6%	556	48.3%	622	50.2%	58.3%	11.9%
EOF non-Transfer	49	5.4%	45	4.5%	34	3.1%	41	3.6%	41	3.3%	-16.3%	0.0%
EOF Transfer	8	0.9%	5	0.5%	10	0.9%	9	0.8%	9	0.7%	12.5%	0.0%
Special	29	3.2%	28	2.8%	35	3.2%	39	3.4%	46	3.7%	58.6%	17.9%
Transfer	421	46.8%	493	49.0%	489	44.2%	507	44.0%	521	42.1%	23.8%	2.8%
Total	900		1,006		1,106		1,152		1,239		37.7%	7.6%

CUMULATIVE PERCENT CHANGE IN DEGREES AWARDED BY ETHNICITY



CUMULATIVE PCT. CHANGE IN DEGREES AWARDED BY INITIAL ADMIT TYPE



DEGREES AWARDED BY ETHNICITY AND CITIZENSHIP, 2001-02 TO 2005-06

Bachelor's	2001-02		2002-03		2003-04		2004-05		2005-06		Pct. Change 01/02 to 05/06	Pct. Change 04/05 to 05/06
	No.	Pct.	No.	Pct.	No.	Pct.	No.	Pct.	No.	Pct.		
American Indian/Nat. Al.	1	0.1%	5	0.6%	1	0.1%	2	0.2%	4	0.4%	300.0%	100.0%
Asian/Pacific Islander	37	4.4%	36	4.0%	37	3.7%	46	4.4%	43	3.9%	16.2%	-6.5%
Black, non-Hispanic	56	6.7%	60	6.6%	57	5.6%	59	5.6%	71	6.4%	26.8%	20.3%
Hispanic	60	7.2%	70	7.7%	59	5.8%	59	5.6%	79	7.2%	31.7%	33.9%
White, non-Hispanic	640	76.8%	701	77.2%	815	80.7%	830	79.3%	863	78.2%	34.8%	4.0%
Nonresident Alien	39	4.7%	36	4.0%	41	4.1%	50	4.8%	43	3.9%	10.3%	-14.0%
Total	833		908		1,010		1,046		1,103		32.4%	5.4%

Master's	2001-02		2002-03		2003-04		2004-05		2005-06		Pct. Change 01/02 to 05/06	Pct. Change 04/05 to 05/06
	No.	Pct.	No.	Pct.	No.	Pct.	No.	Pct.	No.	Pct.		
American Indian/Nat. Al.	1	1.5%	1	1.0%	0	0.0%	0	0.0%	1	0.7%	0.0%	N/A
Asian/Pacific Islander	0	0.0%	0	0.0%	7	7.3%	1	0.9%	0	0.0%	N/A	-100.0%
Black, non-Hispanic	12	17.9%	3	3.1%	2	2.1%	3	2.8%	6	4.4%	-50.0%	100.0%
Hispanic	1	1.5%	1	1.0%	1	1.0%	3	2.8%	5	3.7%	400.0%	66.7%
White, non-Hispanic	51	76.1%	91	92.9%	82	85.4%	95	89.6%	122	89.7%	139.2%	28.4%
Nonresident Alien	2	3.0%	2	2.0%	4	4.2%	4	3.8%	2	1.5%	0.0%	-50.0%
Total	67		98		96		106		136		103.0%	28.3%

Total	2001-02		2002-03		2003-04		2004-05		2005-06		Pct. Change 01/02 to 05/06	Pct. Change 04/05 to 05/06
	No.	Pct.	No.	Pct.	No.	Pct.	No.	Pct.	No.	Pct.		
American Indian/Nat. Al.	2	0.2%	6	0.6%	1	0.1%	2	0.2%	5	0.4%	150.0%	150.0%
Asian/Pacific Islander	37	4.1%	36	3.6%	44	4.0%	47	4.1%	43	3.5%	16.2%	-8.5%
Black, non-Hispanic	68	7.6%	63	6.3%	59	5.3%	62	5.4%	77	6.2%	13.2%	24.2%
Hispanic	61	6.8%	71	7.1%	60	5.4%	62	5.4%	84	6.8%	37.7%	35.5%
White, non-Hispanic	691	76.8%	792	78.7%	897	81.1%	925	80.3%	985	79.5%	42.5%	6.5%
Nonresident Alien	41	4.6%	38	3.8%	45	4.1%	54	4.7%	45	3.6%	9.8%	-16.7%
Total	900		1,006		1,106		1,152		1,239		37.7%	7.6%

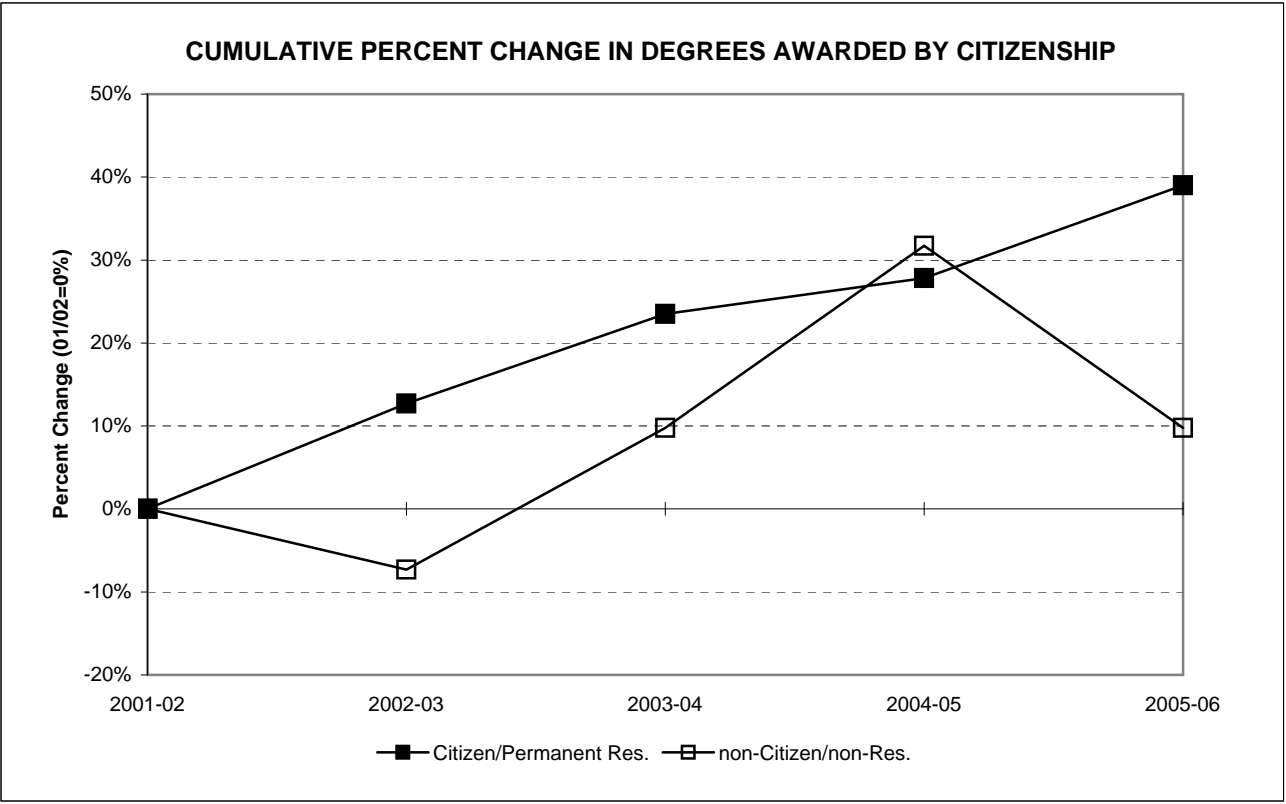
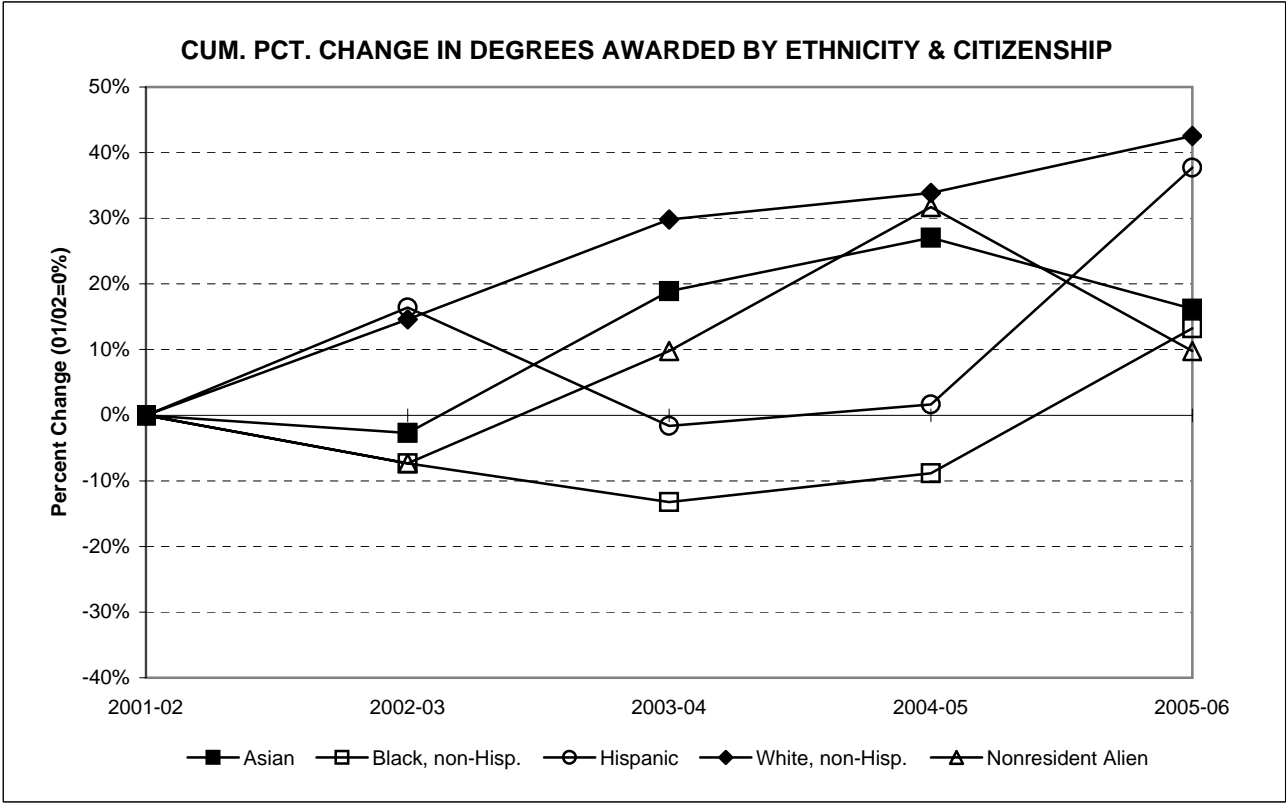


DEGREES AWARDED BY CITIZENSHIP, 2001-02 TO 2005-06

Bachelor's	2001-02		2002-03		2003-04		2004-05		2005-06		Pct. Change 01/02 to 05/06	Pct. Change 04/05 to 05/06
	No.	Pct.	No.	Pct.	No.	Pct.	No.	Pct.	No.	Pct.		
Citizen/Permanent Res.	794	95.3%	872	96.0%	969	95.9%	996	95.2%	1,060	96.1%	33.5%	6.4%
non-Citizen/non-Res.	39	4.7%	36	4.0%	41	4.1%	50	4.8%	43	3.9%	10.3%	-14.0%
Total	833		908		1,010		1,046		1,103		32.4%	5.4%

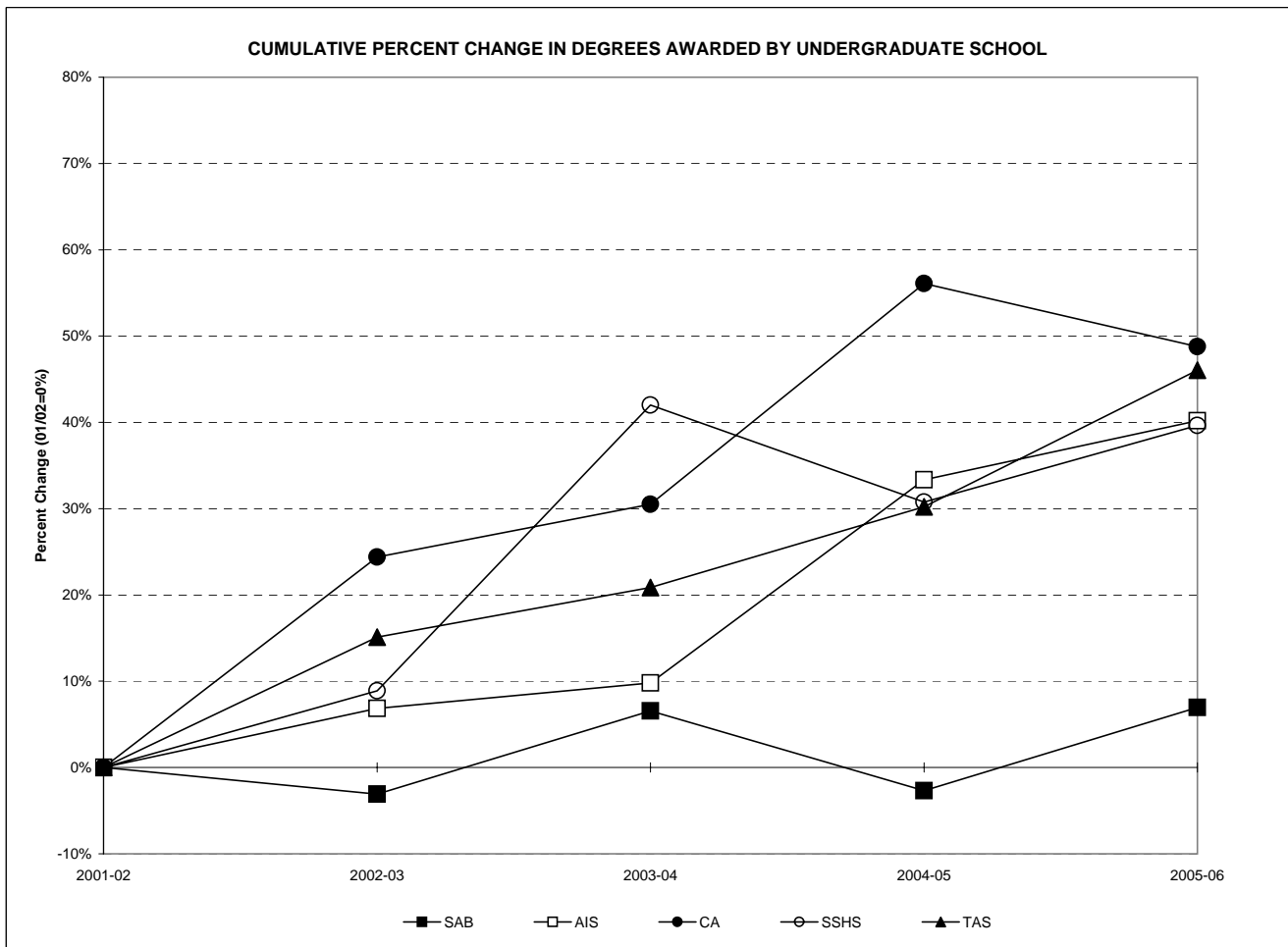
Master's	2001-02		2002-03		2003-04		2004-05		2005-06		Pct. Change 01/02 to 05/06	Pct. Change 04/05 to 05/06
	No.	Pct.	No.	Pct.	No.	Pct.	No.	Pct.	No.	Pct.		
Citizen/Permanent Res.	65	97.0%	96	98.0%	92	95.8%	102	96.2%	134	98.5%	106.2%	31.4%
non-Citizen/non-Res.	2	3.0%	2	2.0%	4	4.2%	4	3.8%	2	1.5%	0.0%	-50.0%
Total	67		98		96		106		136		103.0%	28.3%

Total	2001-02		2002-03		2003-04		2004-05		2005-06		Pct. Change 01/02 to 05/06	Pct. Change 04/05 to 05/06
	No.	Pct.	No.	Pct.	No.	Pct.	No.	Pct.	No.	Pct.		
Citizen/Permanent Res.	859	95.4%	968	96.2%	1,061	95.9%	1,098	95.3%	1,194	96.4%	39.0%	8.7%
non-Citizen/non-Res.	41	4.6%	38	3.8%	45	4.1%	54	4.7%	45	3.6%	9.8%	-16.7%
Total	900		1,006		1,106		1,152		1,239		37.7%	7.6%



DEGREES AWARDED BY UNDERGRADUATE SCHOOL AND COMBINED GRADUATE PROGRAMS, 2001-02 TO 2005-06

Schools	2001-02		2002-03		2003-04		2004-05		2005-06		Percent Chg. 01/02 to 05/06	Percent Chg. 04/05 to 05/06
	No.	Pct.	No.	Pct.	No.	Pct.	No.	Pct.	No.	Pct.		
Admin. & Business	259	28.8%	251	25.0%	276	25.0%	252	21.9%	277	22.4%	6.9%	9.9%
Amer. & Int'l Studies	102	11.3%	109	10.8%	112	10.1%	136	11.8%	143	11.5%	40.2%	5.1%
Contemporary Arts	164	18.2%	204	20.3%	214	19.3%	256	22.2%	244	19.7%	48.8%	-4.7%
Soc. Sci. & Hum. Serv.	169	18.8%	184	18.3%	240	21.7%	221	19.2%	236	19.0%	39.6%	6.8%
Theoretical & App. Sci.	139	15.4%	160	15.9%	168	15.2%	181	15.7%	203	16.4%	46.0%	12.2%
Graduate Programs	67	7.4%	98	9.7%	96	8.7%	106	9.2%	136	11.0%	103.0%	28.3%
Total	900		1,006		1,106		1,152		1,239		37.7%	7.6%



DEGREES AWARDED BY SCHOOL AND MAJOR (WITH GRADUATE PROGRAMS), 2001-02 TO 2005-06

Majors/Programs	2001-02		2002-03		2003-04		2004-05		2005-06		Percent Chg. 01/02 to 05/06	Percent Chg. 04/05 to 05/06
	No.	Pct.	No.	Pct.	No.	Pct.	No.	Pct.	No.	Pct.		
Accounting	31	3.4%	39	3.9%	35	3.2%	41	3.6%	73	5.9%	135.5%	78.0%
Business Administration	126	14.0%	128	12.7%	159	14.4%	136	11.8%	141	11.4%	11.9%	3.7%
Economics	8	0.9%	16	1.6%	15	1.4%	8	0.7%	8	0.6%	0.0%	0.0%
Information Systems	71	7.9%	52	5.2%	48	4.3%	41	3.6%	38	3.1%	-46.5%	-7.3%
International Business	23	2.6%	16	1.6%	19	1.7%	26	2.3%	17	1.4%	-26.1%	-34.6%
Sub-Total: SAB	259	28.8%	251	25.0%	276	25.0%	252	21.9%	277	22.4%	6.9%	9.9%
American Studies	6	0.7%	8	0.8%	7	0.6%	3	0.3%	5	0.4%	-16.7%	66.7%
History	14	1.6%	28	2.8%	34	3.1%	28	2.4%	36	2.9%	157.1%	28.6%
International Studies	8	0.9%	9	0.9%	6	0.5%	10	0.9%	12	1.0%	50.0%	20.0%
Law and Society	15	1.7%	8	0.8%	6	0.5%	11	1.0%	9	0.7%	-40.0%	-18.2%
Literature	45	5.0%	38	3.8%	47	4.2%	70	6.1%	49	4.0%	8.9%	-30.0%
Political Science	14	1.6%	18	1.8%	12	1.1%	14	1.2%	27	2.2%	92.9%	92.9%
Spanish Language Studies	--	--	--	--	--	--	--	--	5	0.4%	N/A	N/A
Sub-Total: AIS	102	11.3%	109	10.8%	112	10.1%	136	11.8%	143	11.5%	40.2%	5.1%
Communication Arts	118	13.1%	143	14.2%	146	13.2%	165	14.3%	171	13.8%	44.9%	3.6%
Contemporary Arts	9	1.0%	10	1.0%	20	1.8%	18	1.6%	21	1.7%	133.3%	16.7%
Fine Arts	37	4.1%	10	1.0%	3	0.3%	7	0.6%	1	0.1%	-97.3%	-85.7%
Music	--	--	7	0.7%	8	0.7%	11	1.0%	10	0.8%	N/A	-9.1%
Theater	--	--	10	1.0%	21	1.9%	19	1.6%	15	1.2%	N/A	-21.1%
Visual Arts	--	--	24	2.4%	16	1.4%	36	3.1%	26	2.1%	N/A	-27.8%
Sub-Total: CA	164	18.2%	204	20.3%	214	19.3%	256	22.2%	244	19.7%	48.8%	-4.7%
Economics	0	0.0%	2	0.2%	1	0.1%	2	0.2%	2	0.2%	N/A	0.0%
Environmental Studies	1	0.1%	1	0.1%	0	0.0%	3	0.3%	0	0.0%	-100.0%	-100.0%
History	1	0.1%	1	0.1%	2	0.2%	1	0.1%	1	0.1%	0.0%	0.0%
Law and Society	6	0.7%	7	0.7%	29	2.6%	38	3.3%	41	3.3%	583.3%	7.9%
Psychology	94	10.4%	112	11.1%	148	13.4%	136	11.8%	126	10.2%	34.0%	-7.4%
Social Science	23	2.6%	18	1.8%	13	1.2%	8	0.7%	12	1.0%	-47.8%	50.0%
Social Work	23	2.6%	20	2.0%	30	2.7%	21	1.8%	30	2.4%	30.4%	42.9%
Sociology	21	2.3%	23	2.3%	17	1.5%	12	1.0%	24	1.9%	14.3%	100.0%
Sub-Total: SSHS	169	18.8%	184	18.3%	240	21.7%	221	19.2%	236	19.0%	39.6%	6.8%
Biochemistry	6	0.7%	4	0.4%	4	0.4%	3	0.3%	3	0.2%	-50.0%	0.0%
Bioinformatics	--	--	--	--	1	0.1%	2	0.2%	1	0.1%	N/A	-50.0%
Biology	15	1.7%	18	1.8%	26	2.4%	25	2.2%	40	3.2%	166.7%	60.0%
Chemistry	5	0.6%	4	0.4%	2	0.2%	4	0.3%	2	0.2%	-60.0%	-50.0%
Computer Science	9	1.0%	14	1.4%	15	1.4%	25	2.2%	17	1.4%	88.9%	-32.0%
Environmental Science	3	0.3%	7	0.7%	3	0.3%	2	0.2%	5	0.4%	66.7%	150.0%
Environmental Studies	15	1.7%	11	1.1%	21	1.9%	16	1.4%	13	1.0%	-13.3%	-18.8%
Integrated Science Studies	--	--	--	--	--	--	1	0.1%	0	0.0%	N/A	-100.0%
Mathematics	4	0.4%	8	0.8%	4	0.4%	8	0.7%	10	0.8%	150.0%	25.0%
Nursing	54	6.0%	69	6.9%	62	5.6%	73	6.3%	65	5.2%	20.4%	-11.0%
Physics	0	0.0%	2	0.2%	2	0.2%	1	0.1%	6	0.5%	N/A	500.0%
Psychology	28	3.1%	23	2.3%	28	2.5%	21	1.8%	41	3.3%	46.4%	95.2%
Sub-Total: TAS	139	15.4%	160	15.9%	168	15.2%	181	15.7%	203	16.4%	46.0%	12.2%
M.A. in Liberal Studies	12	1.3%	10	1.0%	9	0.8%	4	0.3%	11	0.9%	-8.3%	175.0%
M. in Business Admin.	12	1.3%	8	0.8%	26	2.4%	19	1.6%	14	1.1%	16.7%	-26.3%
M.S. in Educational Tech.	43	4.8%	80	8.0%	61	5.5%	79	6.9%	101	8.2%	134.9%	27.8%
M.S. in Nursing	--	--	--	--	--	--	4	0.3%	10	0.8%	N/A	150.0%
Sub-Total: TAS	67	7.4%	98	9.7%	96	8.7%	106	9.2%	136	11.0%	103.0%	28.3%
Total	900		1,006		1,106		1,152		1,239		37.7%	7.6%

DEGREES AWARDED BY MAJOR (WITH GRADUATE PROGRAMS), 2001-02 TO 2005-06

Major/Program	2001-02		2002-03		2003-04		2004-05		2005-06		Percent	Percent
	No.	Pct.	No.	Pct.	No.	Pct.	No.	Pct.	No.	Pct.	Chg. 01/02 to 05/06	Chg. 04/05 to 05/06
Accounting	31	3.4%	39	3.9%	35	3.2%	41	3.6%	73	5.9%	135.5%	78.0%
American Studies	6	0.7%	8	0.8%	7	0.6%	3	0.3%	5	0.4%	-16.7%	66.7%
Biochemistry	6	0.7%	4	0.4%	4	0.4%	3	0.3%	3	0.2%	-50.0%	0.0%
Bioinformatics	--	--	--	--	1	0.1%	2	0.2%	1	0.1%	N/A	-50.0%
Biology	15	1.7%	18	1.8%	26	2.4%	25	2.2%	40	3.2%	166.7%	60.0%
Business Administration	126	14.0%	128	12.7%	159	14.4%	136	11.8%	141	11.4%	11.9%	3.7%
Chemistry	5	0.6%	4	0.4%	2	0.2%	4	0.3%	2	0.2%	-60.0%	-50.0%
Communication Arts	118	13.1%	143	14.2%	146	13.2%	165	14.3%	171	13.8%	143.0%	3.6%
Computer Science	9	1.0%	14	1.4%	15	1.4%	25	2.2%	17	1.4%	88.9%	-32.0%
Contemporary Arts	9	1.0%	10	1.0%	20	1.8%	18	1.6%	21	1.7%	133.3%	16.7%
Economics[2]	8	0.9%	18	1.8%	16	1.4%	10	0.9%	10	0.8%	25.0%	0.0%
Environmental Science	3	0.3%	7	0.7%	3	0.3%	2	0.2%	5	0.4%	66.7%	150.0%
Environmental Studies[3]	16	1.8%	12	1.2%	21	1.9%	19	1.6%	13	1.0%	-18.8%	-31.6%
Fine Arts	37	4.1%	10	1.0%	3	0.3%	7	0.6%	1	0.1%	-97.3%	-85.7%
History[4]	15	1.7%	29	2.9%	36	3.3%	29	2.5%	37	3.0%	146.7%	27.6%
Information Systems	71	7.9%	52	5.2%	48	4.3%	41	3.6%	38	3.1%	-46.5%	-7.3%
International Business	23	2.6%	16	1.6%	19	1.7%	26	2.3%	17	1.4%	-26.1%	-34.6%
Integrated Science	--	--	--	--	--	--	1	0.1%	0	0.0%	N/A	-100.0%
International Studies	8	0.9%	9	0.9%	6	0.5%	10	0.9%	12	1.0%	50.0%	20.0%
Law and Society[5]	21	2.3%	15	1.5%	35	3.2%	49	4.3%	50	4.0%	138.1%	2.0%
Literature	45	5.0%	38	3.8%	47	4.2%	70	6.1%	49	4.0%	8.9%	-30.0%
M.A. in Liberal Studies	12	1.3%	10	1.0%	9	0.8%	4	0.3%	11	0.9%	-8.3%	175.0%
M. in Business Admin.	12	1.3%	8	0.8%	26	2.4%	19	1.6%	14	1.1%	16.7%	-26.3%
M.S. in Ed. Technology	43	4.8%	80	8.0%	61	5.5%	79	6.9%	101	8.2%	134.9%	27.8%
M.S. in Nursing	--	--	--	--	--	--	4	0.3%	10	0.8%	N/A	150.0%
Mathematics	4	0.4%	8	0.8%	4	0.4%	8	0.7%	10	0.8%	150.0%	25.0%
Music	--	--	7	0.7%	8	0.7%	11	1.0%	10	0.8%	N/A	-9.1%
Nursing[1]	54	6.0%	69	6.9%	62	5.6%	73	6.3%	65	5.2%	20.4%	-11.0%
Physics	0	0.0%	2	0.2%	2	0.2%	1	0.1%	6	0.5%	N/A	500.0%
Political Science[6]	14	1.6%	18	1.8%	12	1.1%	14	1.2%	27	2.2%	92.9%	92.9%
Psychology[7]	122	13.6%	135	13.4%	176	15.9%	157	13.6%	167	13.5%	36.9%	6.4%
Social Science	23	2.6%	18	1.8%	13	1.2%	8	0.7%	12	1.0%	-47.8%	50.0%
Social Work	23	2.6%	20	2.0%	30	2.7%	21	1.8%	30	2.4%	30.4%	42.9%
Sociology	21	2.3%	23	2.3%	17	1.5%	12	1.0%	24	1.9%	14.3%	100.0%
Spanish Language Studies	--	--	--	--	--	--	--	--	5	0.4%	N/A	N/A
Theater	--	--	10	1.0%	21	1.9%	19	1.6%	15	1.2%	N/A	-21.1%
Visual Arts	--	--	24	2.4%	16	1.4%	36	3.1%	26	2.1%	N/A	-27.8%
Total	900		1,006		1,106		1,152		1,239		37.7%	7.6%

[1] Joint degree with UMDNJ.

[2] Includes students from SAB and SSHS.

[3] Includes students from SSHS and TAS.

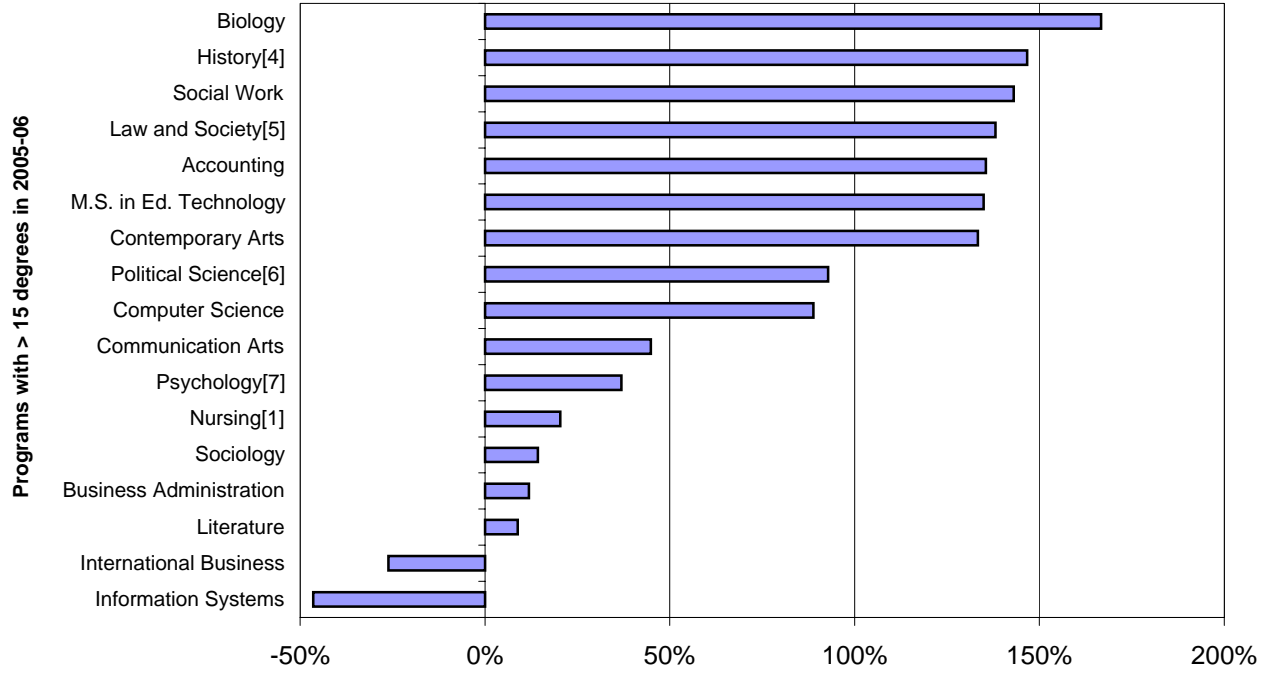
[4] Includes students from AIS and SSHS.

[5] Includes students from AIS and SSHS.

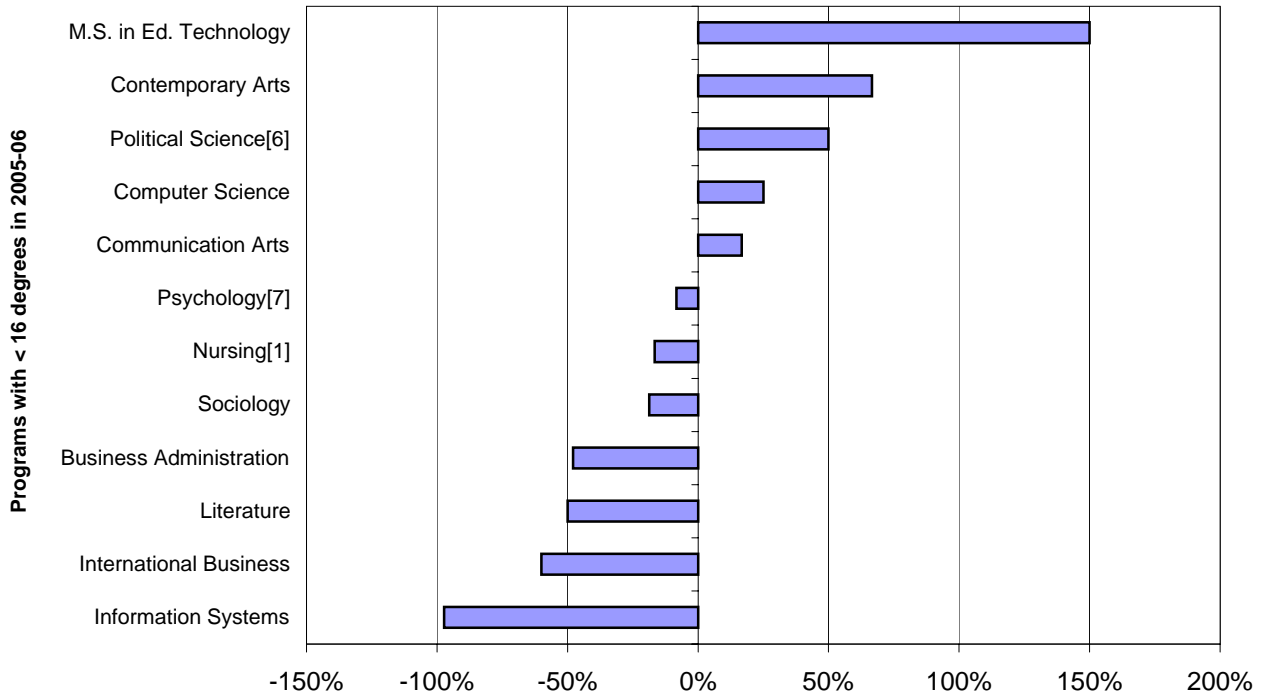
[6] Includes students from AIS and SSHS.

[7] Includes students from SSHS and TAS.

PCT CHANGE (01/02 TO 05/06) IN DEGREES AWARDED BY PRIMARY MAJOR

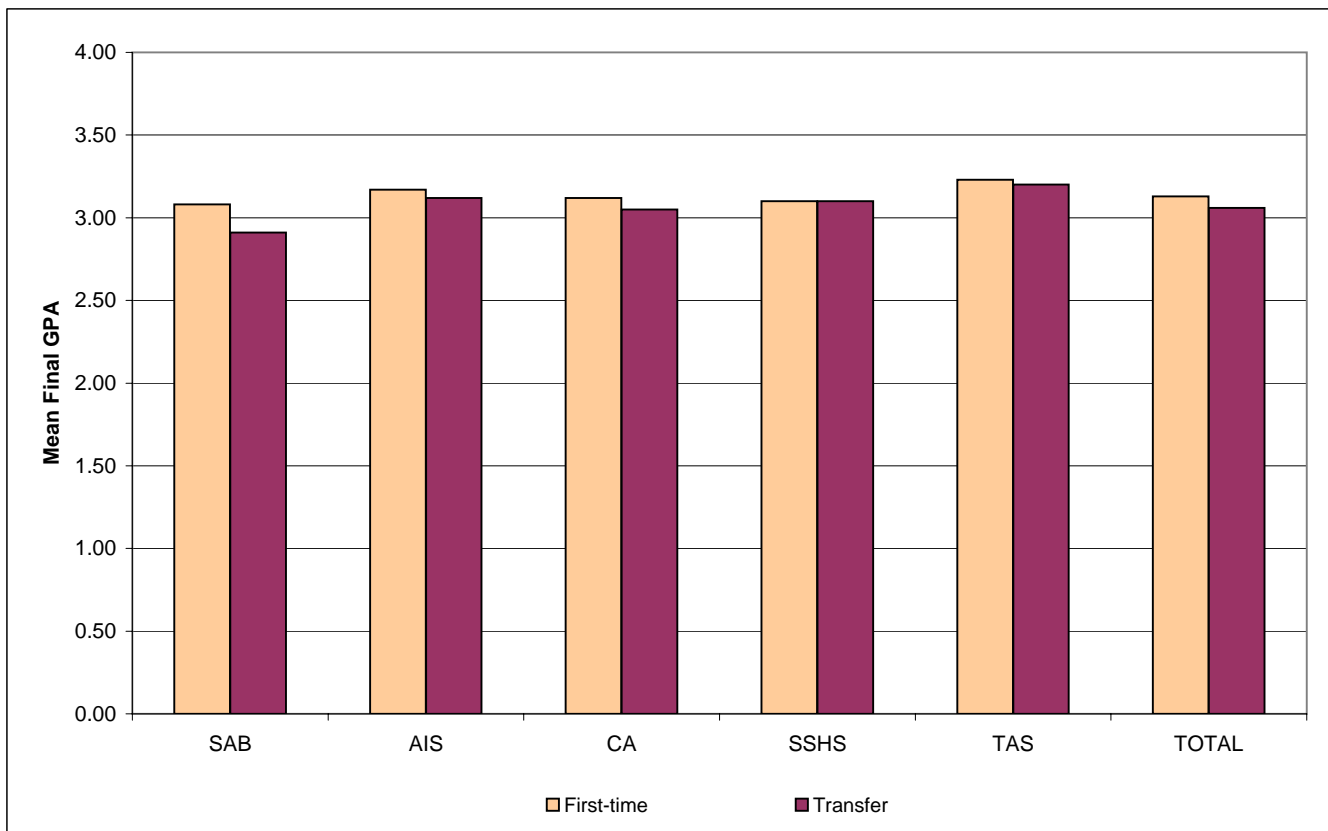


PCT CHANGE (01/02 TO 05/06) IN DEGREES AWARDED BY PRIMARY MAJOR



**MEAN FINAL GRADE POINT AVERAGES BY SCHOOL AND INITIAL ADMISSIONS TYPE
2005-06 DEGREE RECIPIENTS, UNDERGRADUATE ONLY**

School	Mean Final Grade Point Average of First-time Students		Mean Final Grade Point Average of Transfer Students		Overall Mean GPA
	Number	Mean GPA	Number	Mean GPA	
Admin. & Business	130	3.08	147	2.91	2.99
Amer. & Int'l Studies	75	3.17	68	3.12	3.14
Contemporary Arts	147	3.12	97	3.05	3.09
Soc. Sci. & Hum. Serv.	123	3.10	113	3.10	3.10
Theoretical & App. Sci.	98	3.23	105	3.20	3.21
Overall	573	3.13	530	3.06	3.10



NEW UNDERGRADUATE STUDENT COHORT RETENTION RATES

Fall of Entry	Sub-Cohorts*	Original Size	Retained One-Year		Retained Two-Years		Retained Three-Years		Retained Four-Years		Retained Five-Years		Retained Six-Years	
			#	Rate	#	Rate	#	Rate	#	Rate	#	Rate	#	Rate
1996	FTFTF	413	337	81.6%	281	68.0%	255	61.7%	153	37.0%	38	9.2%	22	5.3%
	PTFTF	17	10	58.8%	4	23.5%	3	17.6%	3	17.6%	1	5.9%	1	5.9%
	FTTR	339	257	75.8%	161	47.5%	67	19.8%	33	9.7%	8	2.4%	6	1.8%
	PTTR	210	124	59.0%	92	43.8%	64	30.5%	35	16.7%	26	12.4%	19	9.0%
	Total	979	728	74.4%	538	55.0%	389	39.7%	224	22.9%	73	7.5%	48	4.9%
1997	FTFTF	454	359	79.1%	306	67.4%	294	64.8%	162	35.7%	45	9.9%	22	4.8%
	PTFTF	17	8	47.1%	7	41.2%	4	23.5%	4	23.5%	3	17.6%	2	11.8%
	FTTR	351	269	76.6%	168	47.9%	73	20.8%	29	8.3%	12	3.4%	12	3.4%
	PTTR	208	139	66.8%	104	50.0%	69	33.2%	44	21.2%	31	14.9%	22	10.6%
	Total	1,030	775	75.2%	585	56.8%	440	42.7%	239	23.2%	91	8.8%	58	5.6%
1998	FTFTF	472	392	83.1%	353	74.8%	321	68.0%	167	35.4%	47	10.0%	22	4.7%
	PTFTF	17	12	70.6%	9	52.9%	7	41.2%	6	35.3%	4	23.5%	3	17.6%
	FTTR	351	264	75.2%	171	48.7%	77	21.9%	35	10.0%	12	3.4%	9	2.6%
	PTTR	183	120	65.6%	91	49.7%	67	36.6%	39	21.3%	29	15.8%	16	8.7%
	Total	1,023	788	77.0%	624	61.0%	472	46.1%	247	24.1%	92	9.0%	50	4.9%
1999	FTFTF	528	435	82.4%	378	71.6%	348	65.9%	146	27.7%	42	8.0%	18	3.4%
	PTFTF	8	4	50.0%	3	37.5%	2	25.0%	0	0.0%	0	0.0%	0	0.0%
	FTTR	364	274	75.3%	169	46.4%	88	24.2%	37	10.2%	15	4.1%	8	2.2%
	PTTR	152	93	61.2%	74	48.7%	53	34.9%	37	24.3%	27	17.8%	10	6.6%
	Total	1,052	806	76.6%	624	59.3%	491	46.7%	220	20.9%	84	8.0%	36	3.4%
2000	FTFTF	638	542	85.0%	490	76.8%	459	71.9%	187	29.3%	31	4.9%	15	2.4%
	PTFTF	6	4	66.7%	4	66.7%	4	66.7%	4	66.7%	2	33.3%	2	33.3%
	FTTR	369	276	74.8%	184	49.9%	75	20.3%	27	7.3%	8	2.2%	9	2.4%
	PTTR	150	84	56.0%	65	43.3%	44	29.3%	29	19.3%	19	12.7%	14	9.3%
	Total	1,163	906	77.9%	743	63.9%	582	50.0%	247	21.2%	60	5.2%	40	3.4%
2001	FTFTF	628	525	83.6%	468	74.5%	446	71.0%	140	22.3%	20	3.2%	-	-
	PTFTF	5	2	40.0%	2	40.0%	2	40.0%	2	40.0%	1	20.0%	-	-
	FTTR	364	291	79.9%	190	52.2%	70	19.2%	26	7.1%	15	4.1%	-	-
	PTTR	141	92	65.2%	73	51.8%	42	29.8%	30	21.3%	14	9.9%	-	-
	Total	1,138	910	80.0%	733	64.4%	560	49.2%	198	17.4%	50	4.4%	-	-
2002	FTFTF	684	595	87.0%	536	78.4%	512	74.9%	146	21.3%	-	-	-	-
	PTFTF	3	1	33.3%	1	33.3%	1	33.3%	1	33.3%	-	-	-	-
	FTTR	433	338	78.1%	221	51.0%	85	19.6%	23	5.3%	-	-	-	-
	PTTR	135	85	63.0%	59	43.7%	36	26.7%	21	15.6%	-	-	-	-
	Total	1,255	1,019	81.2%	817	65.1%	634	50.5%	191	15.2%	-	-	-	-
2003	FTFTF	725	646	89.1%	578	79.7%	562	77.5%	-	-	-	-	-	-
	PTFTF	0	-	N/A	-	N/A	-	N/A	-	-	-	-	-	-
	FTTR	378	315	83.3%	209	55.3%	85	22.5%	-	-	-	-	-	-
	PTTR	120	63	52.5%	45	37.5%	21	17.5%	-	-	-	-	-	-
	Total	1,223	1,024	83.7%	832	68.0%	668	54.6%	-	-	-	-	-	-
2004	FTFTF	755	674	89.3%	616	81.6%	-	-	-	-	-	-	-	-
	PTFTF	0	0	N/A	-	N/A	-	-	-	-	-	-	-	-
	FTTR	398	346	86.9%	213	53.5%	-	-	-	-	-	-	-	-
	PTTR	93	63	67.7%	39	41.9%	-	-	-	-	-	-	-	-
	Total	1,246	1,083	86.9%	868	69.7%	-	-	-	-	-	-	-	-
2005	FTFTF	748	655	87.6%	-	-	-	-	-	-	-	-	-	-
	PTFTF	0	0	N/A	-	-	-	-	-	-	-	-	-	-
	FTTR	396	316	79.8%	-	-	-	-	-	-	-	-	-	-
	PTTR	76	44	57.9%	-	-	-	-	-	-	-	-	-	-
	Total	1,220	1,015	83.2%	-	-	-	-	-	-	-	-	-	-

* FTFTF=full-time, first-time freshmen; PTFTF=part-time, first-time freshmen; FTTR=full-time transfers; and PTTR=part-time transfers.

SIX-YEAR RETENTION BY ETHNICITY FULL-TIME, FIRST-TIME FRESHMEN

Fall of Entry	Sub-Cohorts	Original Size	Retained One-Year		Retained Two-Years		Retained Three-Years		Retained Four-Years		Retained Five-Years		Retained Six-Years	
			#	Rate	#	Rate	#	Rate	#	Rate	#	Rate	#	Rate
1996	Amer. I/Nat.AI.	0	0	0.0%	0	0.0%	0	0.0%	0	0.0%	0	0.0%	0	0.0%
	Asian/Pac Is.	18	15	83.3%	10	55.6%	9	50.0%	7	38.9%	2	11.1%	3	16.7%
	Black, Non-Hisp.	66	53	80.3%	43	65.2%	34	51.5%	24	36.4%	6	9.1%	2	3.0%
	Hispanic	48	39	81.3%	28	58.3%	25	52.1%	19	39.6%	10	20.8%	4	8.3%
	White, non Hisp.	281	230	81.9%	200	71.2%	187	66.5%	103	36.7%	20	7.1%	13	4.6%
	Total	413	337	81.6%	281	68.0%	255	61.7%	153	37.0%	38	9.2%	22	5.3%
1997	Amer. I/Nat.AI.	1	1	100.0%	1	100.0%	1	100.0%	1	100.0%	1	100.0%	0	0.0%
	Asian/Pac Is.	30	25	83.3%	22	73.3%	19	63.3%	9	30.0%	0	0.0%	0	0.0%
	Black, Non-Hisp.	51	41	80.4%	35	68.6%	32	62.7%	21	41.2%	6	11.8%	2	3.9%
	Hispanic	33	30	90.9%	26	78.8%	25	75.8%	16	48.5%	6	18.2%	4	12.1%
	White, non Hisp.	339	262	77.3%	222	65.5%	217	64.0%	115	33.9%	32	9.4%	16	4.7%
	Total	454	359	79.1%	306	67.4%	294	64.8%	162	35.7%	45	9.9%	22	4.8%
1998	Amer. I/Nat.AI.	2	2	100.0%	2	100.0%	2	100.0%	1	50.0%	0	0.0%	1	50.0%
	Asian/Pac Is.	27	23	85.2%	22	81.5%	20	74.1%	9	33.3%	2	7.4%	1	3.7%
	Black, Non-Hisp.	30	26	86.7%	21	70.0%	19	63.3%	8	26.7%	4	13.3%	1	3.3%
	Hispanic	63	51	81.0%	44	69.8%	40	63.5%	27	42.9%	5	7.9%	0	0.0%
	White, non Hisp.	350	290	82.9%	264	75.4%	240	68.6%	122	34.9%	36	10.3%	19	5.4%
	Total	472	392	83.1%	353	74.8%	321	68.0%	167	35.4%	47	10.0%	22	4.7%
1999	Amer. I/Nat.AI.	0	0	0.0%	0	0.0%	0	0.0%	0	0.0%	0	0.0%	0	0.0%
	Asian/Pac Is.	26	23	88.5%	22	84.6%	19	73.1%	9	34.6%	2	7.7%	1	3.8%
	Black, Non-Hisp.	56	47	83.9%	40	71.4%	37	66.1%	14	25.0%	5	8.9%	3	5.4%
	Hispanic	50	42	84.0%	32	64.0%	30	60.0%	17	34.0%	4	8.0%	0	0.0%
	White, non Hisp.	396	323	81.6%	284	71.7%	262	66.2%	106	26.8%	31	7.8%	14	3.5%
	Total	528	435	82.4%	378	71.6%	348	65.9%	146	27.7%	42	8.0%	18	3.4%
2000	Amer. I/Nat.AI.	2	2	100.0%	2	100.0%	2	100.0%	6	0.0%	1	0.0%	0	0.0%
	Asian/Pac Is.	31	25	80.6%	23	74.2%	17	54.8%	14	45.2%	5	16.1%	2	6.5%
	Black, Non-Hisp.	49	41	83.7%	38	77.6%	31	63.3%	2	4.1%	2	4.1%	1	2.0%
	Hispanic	53	45	84.9%	40	75.5%	34	64.2%	20	37.7%	4	7.5%	2	3.8%
	White, non Hisp.	503	429	85.3%	387	76.9%	375	74.6%	145	28.8%	19	3.8%	10	2.0%
	Total	638	542	85.0%	490	76.8%	459	71.9%	187	29.3%	31	4.9%	15	2.4%
2001	Amer. I/Nat.AI.	0	0	0.0%	0	0.0%	0	0.0%	0	0.0%	0	0.0%	-	-
	Asian/Pac Is.	35	32	91.4%	27	77.1%	23	65.7%	4	11.4%	2	5.7%	-	-
	Black, Non-Hisp.	44	35	79.5%	31	70.5%	32	72.7%	12	27.3%	2	4.5%	-	-
	Hispanic	58	51	87.9%	46	79.3%	42	72.4%	17	29.3%	2	3.4%	-	-
	White, non Hisp.	491	407	82.9%	364	74.1%	349	71.1%	107	21.8%	14	2.9%	-	-
	Total	628	525	83.6%	468	74.5%	446	71.0%	140	22.3%	20	3.2%	-	-
2002	Amer. I/Nat.AI.	3	3	100.0%	1	0.0%	1	0.0%	0	0.0%	-	-	-	-
	Asian/Pac Is.	23	20	87.0%	17	73.9%	14	60.9%	3	13.0%	-	-	-	-
	Black, Non-Hisp.	58	51	87.9%	48	82.8%	47	81.0%	17	29.3%	-	-	-	-
	Hispanic	69	56	81.2%	47	68.1%	42	60.9%	15	21.7%	-	-	-	-
	White, non Hisp.	531	465	87.6%	423	79.7%	408	76.8%	111	20.9%	-	-	-	-
	Total	684	595	87.0%	536	78.4%	512	74.9%	146	21.3%	-	-	-	-
2003	Amer. I/Nat.AI.	3	3	100.0%	3	0.0%	3	0.0%	-	-	-	-	-	-
	Asian/Pac Is.	25	24	96.0%	20	80.0%	19	76.0%	-	-	-	-	-	-
	Black, Non-Hisp.	53	47	88.7%	42	79.2%	40	75.5%	-	-	-	-	-	-
	Hispanic	58	50	86.2%	41	70.7%	40	69.0%	-	-	-	-	-	-
	White, non Hisp.	586	522	89.1%	472	80.5%	460	78.5%	-	-	-	-	-	-
	Total	725	646	89.1%	578	79.7%	562	77.5%	-	-	-	-	-	-
2004	Amer. I/Nat.AI.	1	0	0.0%	0	0.0%	-	-	-	-	-	-	-	-
	Asian/Pac Is.	40	37	92.5%	28	70.0%	-	-	-	-	-	-	-	-
	Black, Non-Hisp.	48	42	87.5%	33	68.8%	-	-	-	-	-	-	-	-
	Hispanic	64	58	90.6%	51	79.7%	-	-	-	-	-	-	-	-
	White, non Hisp.	602	537	89.2%	504	83.7%	-	-	-	-	-	-	-	-
	Total	755	674	89.3%	616	81.6%	-	-	-	-	-	-	-	-
2005	Amer. I/Nat.AI.	2	2	100.0%	-	-	-	-	-	-	-	-	-	-
	Asian/Pac Is.	32	28	87.5%	-	-	-	-	-	-	-	-	-	-
	Black, Non-Hisp.	67	56	83.6%	-	-	-	-	-	-	-	-	-	-
	Hispanic	67	58	86.6%	-	-	-	-	-	-	-	-	-	-
	White, non Hisp.	580	511	88.1%	-	-	-	-	-	-	-	-	-	-
	Total	748	655	87.6%	-	-	-	-	-	-	-	-	-	-

SIX-YEAR RETENTION BY ADMIT TYPE FOR FULL-TIME, FIRST-TIME FRESHMEN

Fall of Entry	Sub-Cohorts	Original Size	Retained One-Year		Retained Two-Years		Retained Three-Years		Retained Four-Years		Retained Five-Years		Retained Six-Years	
			#	Rate	#	Rate	#	Rate	#	Rate	#	Rate	#	Rate
1996	Regular	296	239	80.7%	202	68.2%	184	62.2%	102	34.5%	25	8.4%	15	5.1%
	EOF	74	68	91.9%	52	70.3%	46	62.2%	34	45.9%	10	13.5%	6	8.1%
	Special	43	30	69.8%	27	62.8%	25	58.1%	17	39.5%	3	7.0%	1	2.3%
	Total	413	337	81.6%	281	68.0%	255	61.7%	153	37.0%	38	9.2%	22	5.3%
1997	Regular	340	262	77.1%	220	64.7%	212	62.4%	100	29.4%	31	9.1%	15	4.4%
	EOF	67	60	89.6%	52	77.6%	52	77.6%	35	52.2%	9	13.4%	4	6.0%
	Special	47	37	78.7%	34	72.3%	30	63.8%	27	57.4%	5	10.6%	3	6.4%
	Total	454	359	79.1%	306	67.4%	294	64.8%	162	35.7%	45	9.9%	22	4.8%
1998	Regular	352	295	83.8%	271	77.0%	246	69.9%	124	35.2%	35	9.9%	17	4.8%
	EOF	69	57	82.6%	46	66.7%	42	60.9%	23	33.3%	7	10.1%	1	1.4%
	Special	51	40	78.4%	36	70.6%	33	64.7%	20	39.2%	5	9.8%	4	7.8%
	Total	472	392	83.1%	353	74.8%	321	68.0%	167	35.4%	47	10.0%	22	4.7%
1999	Regular	414	330	79.7%	292	70.5%	270	65.2%	104	25.1%	30	7.2%	13	3.1%
	EOF	60	56	93.3%	44	73.3%	41	68.3%	21	35.0%	8	13.3%	4	6.7%
	Special	54	49	90.7%	42	77.8%	37	68.5%	21	38.9%	4	7.4%	1	1.9%
	Total	528	435	82.4%	378	71.6%	348	65.9%	146	27.7%	42	8.0%	18	3.4%
2000	Regular	511	439	85.9%	399	78.1%	380	74.4%	144	28.2%	21	4.1%	13	2.5%
	EOF	64	55	85.9%	50	78.1%	41	64.1%	23	35.9%	3	4.7%	2	3.1%
	Special	63	48	76.2%	41	65.1%	38	60.3%	20	31.7%	7	11.1%	-	0.0%
	Total	638	542	85.0%	490	76.8%	459	71.9%	187	29.3%	31	4.9%	15	2.4%
2001	Regular	497	414	83.3%	370	74.4%	353	71.0%	101	20.3%	16	3.2%	-	-
	EOF	69	60	87.0%	54	78.3%	52	75.4%	24	34.8%	3	4.3%	-	-
	Special	62	51	82.3%	44	71.0%	41	66.1%	15	24.2%	1	1.6%	-	-
	Total	628	525	83.6%	468	74.5%	446	71.0%	140	22.3%	20	3.2%	-	-
2002	Regular	543	485	89.3%	439	80.8%	423	77.9%	111	20.4%	-	-	-	-
	EOF	73	60	82.2%	51	69.9%	46	63.0%	21	28.8%	-	-	-	-
	Special	68	50	73.5%	46	67.6%	43	63.2%	14	20.6%	-	-	-	-
	Total	684	595	87.0%	536	78.4%	512	74.9%	146	21.3%	-	-	-	-
2003	Regular	582	524	90.0%	472	81.1%	460	79.0%	-	-	-	-	-	-
	EOF	70	61	87.1%	47	67.1%	46	65.7%	-	-	-	-	-	-
	Special	73	61	83.6%	59	80.8%	56	76.7%	-	-	-	-	-	-
	Total	725	646	89.1%	578	79.7%	562	77.5%	-	-	-	-	-	-
2004	Regular	610	549	90.0%	509	83.4%	-	-	-	-	-	-	-	-
	EOF	69	63	91.3%	50	72.5%	-	-	-	-	-	-	-	-
	Special	76	62	81.6%	57	75.0%	-	-	-	-	-	-	-	-
	Total	755	674	89.3%	616	81.6%	-	-	-	-	-	-	-	-
2005	Regular	602	530	88.0%	-	-	-	-	-	-	-	-	-	-
	EOF	71	63	88.7%	-	-	-	-	-	-	-	-	-	-
	Special	75	62	82.7%	-	-	-	-	-	-	-	-	-	-
	Total	748	655	87.6%	-	-	-	-	-	-	-	-	-	-

NEW UNDERGRADUATE STUDENT COHORT CUMULATIVE GRADUATION RATES

Fall of Entry	Sub-Cohorts*	Original Size	One-Year Cumulative Graduation		Two-Year Cumulative Graduation		Three-Year Cumulative Graduation		Four-Year Cumulative Graduation		Five-Year Cumulative Graduation		Six-Year Cumulative Graduation	
			#	Rate	#	Rate	#	Rate	#	Rate	#	Rate	#	Rate
1995	FTFTF	319	0	0.0%	0	0.0%	1	0.3%	67	21.0%	133	41.7%	149	46.7%
	PTFTF	21	0	0.0%	0	0.0%	0	0.0%	0	0.0%	0	0.0%	1	4.8%
	FTTR	311	0	0.0%	53	17.0%	131	42.1%	169	54.3%	183	58.8%	187	60.1%
	PTTR	197	0	0.0%	4	2.0%	21	10.7%	36	18.3%	49	24.9%	58	29.4%
	Total	848	0	0.0%	57	6.7%	153	18.0%	272	32.1%	365	43.0%	395	46.6%
1996	FTFTF	413	0	0.0%	0	0.0%	4	1.0%	102	24.7%	205	49.6%	224	54.2%
	PTFTF	17	0	0.0%	0	0.0%	0	0.0%	0	0.0%	1	5.9%	1	5.9%
	FTTR	339	1	0.3%	56	16.5%	129	38.1%	176	51.9%	191	56.3%	194	57.2%
	PTTR	210	0	0.0%	8	3.8%	32	15.2%	55	26.2%	65	31.0%	72	34.3%
	Total	979	1	0.1%	64	6.5%	165	16.9%	333	34.0%	462	47.2%	491	50.2%
1997	FTFTF	454	0	0.0%	0	0.0%	1	0.2%	131	28.9%	222	48.9%	244	53.7%
	PTFTF	17	0	0.0%	0	0.0%	0	0.0%	0	0.0%	1	5.9%	1	5.9%
	FTTR	351	2	0.6%	69	19.7%	154	43.9%	195	55.6%	212	60.4%	217	61.8%
	PTTR	208	0	0.0%	6	2.9%	22	10.6%	44	21.2%	55	26.4%	67	32.2%
	Total	1,030	2	0.2%	75	7.3%	177	17.2%	370	35.9%	490	47.6%	529	51.4%
1998	FTFTF	472	0	0.0%	0	0.0%	6	1.3%	170	36.0%	267	56.6%	294	62.3%
	PTFTF	17	0	0.0%	0	0.0%	0	0.0%	1	5.9%	3	17.6%	4	23.5%
	FTTR	351	1	0.3%	70	19.9%	143	40.7%	183	52.1%	200	57.0%	207	59.0%
	PTTR	183	0	0.0%	7	3.8%	25	13.7%	48	26.2%	57	31.1%	64	35.0%
	Total	1,023	1	0.1%	77	7.5%	174	17.0%	402	39.3%	527	51.5%	569	55.6%
1999	FTFTF	528	0	0.0%	1	0.2%	7	1.3%	203	38.4%	288	54.5%	311	59.4%
	PTFTF	8	0	0.0%	0	0.0%	0	0.0%	0	0.0%	0	0.0%	0	0.0%
	FTTR	364	2	0.5%	81	22.3%	159	43.7%	204	56.0%	219	60.2%	225	61.8%
	PTTR	152	0	0.0%	5	3.3%	14	9.2%	32	21.1%	38	25.0%	53	34.9%
	Total	1,052	2	0.2%	87	8.3%	180	17.1%	439	41.7%	545	51.8%	589	56.0%
2000	FTFTF	638	0	0.0%	2	0.3%	10	1.6%	284	44.5%	402	63.0%	419	65.7%
	PTFTF	6	0	0.0%	0	0.0%	0	0.0%	1	16.7%	1	16.7%	1	16.7%
	FTTR	369	3	0.8%	75	20.3%	172	46.6%	216	58.5%	232	62.9%	233	63.1%
	PTTR	150	0	0.0%	4	2.7%	23	15.3%	40	26.7%	50	33.3%	51	34.0%
	Total	1,163	3	0.3%	81	7.0%	205	17.6%	541	46.5%	685	58.9%	704	60.5%
2001	FTFTF	628	0	0.0%	0	0.0%	7	1.1%	304	48.4%	393	62.6%	-	-
	PTFTF	5	0	0.0%	0	0.0%	0	0.0%	0	0.0%	1	20.0%	-	-
	FTTR	364	0	0.0%	78	21.4%	183	50.3%	225	61.8%	236	64.8%	-	-
	PTTR	141	0	0.0%	3	2.1%	21	14.9%	34	24.1%	45	31.9%	-	-
	Total	1,138	0	0.0%	81	7.1%	211	18.5%	563	49.5%	675	59.3%	-	-
2002	FTFTF	684	0	0.0%	0	0.0%	5	0.7%	330	48.2%	-	-	-	-
	PTFTF	3	0	0.0%	0	0.0%	0	0.0%	0	0.0%	-	-	-	-
	FTTR	433	3	0.7%	101	23.3%	221	51.0%	272	62.8%	-	-	-	-
	PTTR	135	0	0.0%	6	4.4%	25	18.5%	36	26.7%	-	-	-	-
	Total	1,255	3	0.2%	107	8.5%	251	20.0%	638	50.8%	-	-	-	-
2003	FTFTF	725	0	0.0%	0	0.0%	4	0.6%	-	-	-	-	-	-
	PTFTF	0	0	N/A	0	N/A	0	N/A	-	-	-	-	-	-
	FTTR	378	2	0.5%	84	22.2%	190	50.3%	-	-	-	-	-	-
	PTTR	120	0	0.0%	7	5.8%	22	18.3%	-	-	-	-	-	-
	Total	1,223	2	0.2%	91	7.4%	216	17.7%	-	-	-	-	-	-
2004	FTFTF	755	0	0.0%	0	0.0%	-	-	-	-	-	-	-	-
	PTFTF	0	0	N/A	0	N/A	-	-	-	-	-	-	-	-
	FTTR	398	2	0.5%	90	22.6%	-	-	-	-	-	-	-	-
	PTTR	93	0	0.0%	6	6.5%	-	-	-	-	-	-	-	-
	Total	1,246	2	0.2%	96	7.7%	-	-	-	-	-	-	-	-
2005	FTFTF	748	0	0.0%	-	-	-	-	-	-	-	-	-	-
	PTFTF	0	0	N/A	-	-	-	-	-	-	-	-	-	-
	FTTR	396	3	0.8%	-	-	-	-	-	-	-	-	-	-
	PTTR	76	0	0.0%	-	-	-	-	-	-	-	-	-	-
	Total	1,220	3	0.2%	-	-	-	-	-	-	-	-	-	-

FULL-TIME, FIRST-TIME FRESHMEN COHORT CUMULATIVE GRADUATION RATES

Fall of Entry	Sub-Cohorts	Original Size	One-Year Cumulative Graduation		Two-Year Cumulative Graduation		Three-Year Cumulative Graduation		Four-Year Cumulative Graduation		Five-Year Cumulative Graduation		Six-Year Cumulative Graduation	
1996	Amer. I/Nat.AI.	0	0	0.0%	0	0.0%	0	0.0%	0	0.0%	0	0.0%	0	0.0%
	Asian/Pac Is.	18	0	0.0%	0	0.0%	0	0.0%	3	16.7%	8	44.4%	8	44.4%
	Black, Non-Hisp.	66	0	0.0%	0	0.0%	0	0.0%	7	10.6%	21	31.8%	26	39.4%
	Hispanic	48	0	0.0%	0	0.0%	1	2.1%	4	8.3%	17	35.4%	21	43.8%
	White, non Hisp.	281	0	0.0%	0	0.0%	3	1.1%	88	31.3%	159	56.6%	169	60.1%
	Total	413	0	0.0%	0	0.0%	4	1.0%	102	24.7%	205	49.6%	224	54.2%
1997	Amer. I/Nat.AI.	1	0	0.0%	0	0.0%	0	0.0%	0	0.0%	0	0.0%	0	0.0%
	Asian/Pac Is.	30	0	0.0%	0	0.0%	0	0.0%	10	33.3%	17	56.7%	17	56.7%
	Black, Non-Hisp.	51	0	0.0%	0	0.0%	0	0.0%	10	19.6%	19	37.3%	23	45.1%
	Hispanic	33	0	0.0%	0	0.0%	0	0.0%	5	15.2%	13	39.4%	15	45.5%
	White, non Hisp.	339	0	0.0%	0	0.0%	1	0.3%	106	31.3%	173	51.0%	189	55.8%
	Total	454	0	0.0%	0	0.0%	1	0.2%	131	28.9%	222	48.9%	244	53.7%
1998	Amer. I/Nat.AI.	2	0	0.0%	0	0.0%	0	0.0%	0	0.0%	1	50.0%	1	50.0%
	Asian/Pac Is.	27	0	0.0%	0	0.0%	1	3.7%	12	44.4%	18	66.7%	19	70.4%
	Black, Non-Hisp.	30	0	0.0%	0	0.0%	0	0.0%	8	26.7%	14	46.7%	16	53.3%
	Hispanic	63	0	0.0%	0	0.0%	0	0.0%	17	27.0%	35	55.6%	40	63.5%
	White, non Hisp.	350	0	0.0%	0	0.0%	5	1.4%	133	38.0%	199	56.9%	218	62.3%
	Total	472	0	0.0%	0	0.0%	6	1.3%	170	36.0%	267	56.6%	294	62.3%
1999	Amer. I/Nat.AI.	0	0	0.0%	0	0.0%	0	0.0%	0	0.0%	0	0.0%	0	0.0%
	Asian/Pac Is.	26	0	0.0%	0	0.0%	0	0.0%	10	38.5%	16	61.5%	18	69.2%
	Black, Non-Hisp.	56	0	0.0%	0	0.0%	0	0.0%	18	32.1%	25	44.6%	26	46.4%
	Hispanic	50	0	0.0%	0	0.0%	0	0.0%	13	26.0%	22	44.0%	25	50.0%
	White, non Hisp.	396	0	0.0%	1	0.3%	7	1.8%	162	40.9%	225	56.8%	242	61.1%
	Total	528	0	0.0%	1	0.2%	7	1.3%	203	38.4%	288	54.5%	311	59.4%
2000	Amer. I/Nat.AI.	2	0	0.0%	0	0.0%	0	0.0%	0	0.0%	0	0.0%	1	50.0%
	Asian/Pac Is.	31	0	0.0%	2	6.5%	4	12.9%	13	41.9%	17	54.8%	18	58.1%
	Black, Non-Hisp.	49	0	0.0%	0	0.0%	2	4.1%	18	36.7%	26	53.1%	27	55.1%
	Hispanic	53	0	0.0%	0	0.0%	1	1.9%	15	28.3%	25	47.2%	28	52.8%
	White, non Hisp.	503	0	0.0%	0	0.0%	3	0.6%	238	47.3%	334	66.4%	345	68.6%
	Total	638	0	0.0%	2	0.3%	10	1.6%	284	44.5%	402	63.0%	419	65.7%
2001	Amer. I/Nat.AI.	0	0	0.0%	0	0.0%	0	0.0%	0	0.0%	0	0.0%	-	-
	Asian/Pac Is.	35	0	0.0%	0	0.0%	1	2.9%	16	45.7%	21	60.0%	-	-
	Black, Non-Hisp.	44	0	0.0%	0	0.0%	0	0.0%	14	31.8%	23	52.3%	-	-
	Hispanic	58	0	0.0%	0	0.0%	1	1.7%	22	37.9%	29	50.0%	-	-
	White, non Hisp.	491	0	0.0%	0	0.0%	5	1.0%	252	51.3%	320	65.2%	-	-
	Total	628	0	0.0%	0	0.0%	7	1.1%	304	48.4%	393	62.6%	-	-
2002	Amer. I/Nat.AI.	3	0	0.0%	0	0.0%	0	0.0%	1	0.0%	-	-	-	-
	Asian/Pac Is.	23	0	0.0%	0	0.0%	1	4.3%	8	34.8%	-	-	-	-
	Black, Non-Hisp.	58	0	0.0%	0	0.0%	0	0.0%	26	44.8%	-	-	-	-
	Hispanic	69	0	0.0%	0	0.0%	0	0.0%	18	26.1%	-	-	-	-
	White, non Hisp.	531	0	0.0%	0	0.0%	4	0.8%	277	52.2%	-	-	-	-
	Total	684	0	0.0%	0	0.0%	5	0.7%	330	48.2%	-	-	-	-
2003	Amer. I/Nat.AI.	3	0	0.0%	0	0.0%	0	0.0%	-	-	-	-	-	-
	Asian/Pac Is.	25	0	0.0%	0	0.0%	0	0.0%	-	-	-	-	-	-
	Black, Non-Hisp.	53	0	0.0%	0	0.0%	0	0.0%	-	-	-	-	-	-
	Hispanic	58	0	0.0%	0	0.0%	1	1.7%	-	-	-	-	-	-
	White, non Hisp.	586	0	0.0%	0	0.0%	3	0.5%	-	-	-	-	-	-
	Total	725	0	0.0%	0	0.0%	4	0.6%	-	-	-	-	-	-
2004	Amer. I/Nat.AI.	1	0	0.0%	0	0.0%	-	-	-	-	-	-	-	-
	Asian/Pac Is.	40	0	0.0%	0	0.0%	-	-	-	-	-	-	-	-
	Black, Non-Hisp.	48	0	0.0%	0	0.0%	-	-	-	-	-	-	-	-
	Hispanic	64	0	0.0%	0	0.0%	-	-	-	-	-	-	-	-
	White, non Hisp.	602	0	0.0%	0	0.0%	-	-	-	-	-	-	-	-
	Total	755	0	0.0%	0	0.0%	-	-	-	-	-	-	-	-
2005	Amer. I/Nat.AI.	2	0	0.0%	-	-	-	-	-	-	-	-	-	-
	Asian/Pac Is.	32	0	0.0%	-	-	-	-	-	-	-	-	-	-
	Black, Non-Hisp.	67	0	0.0%	-	-	-	-	-	-	-	-	-	-
	Hispanic	67	0	0.0%	-	-	-	-	-	-	-	-	-	-
	White, non Hisp.	580	0	0.0%	-	-	-	-	-	-	-	-	-	-
	Total	748	0	0.0%	-	-	-	-	-	-	-	-	-	-

TEN-YEAR CUMULATIVE GRADUATION RATES BY ADMIT TYPE FOR FULL-TIME, FIRST-TIME FRESHMEN

Fall of Entry	Sub-Cohorts	Original Size	Four-Year Cumulative Graduation [1]		Five-Year Cumulative Graduation		Six-Year Cumulative Graduation		Seven-Year Cumulative Graduation		Eight-Year Cumulative Graduation		Nine-Year Cumulative Graduation		Ten-Year Cumulative Graduation	
			#	Rate	#	Rate	#	Rate	#	Rate	#	Rate	#	Rate	#	Rate
1990	Regular	274	55	20.1%	98	35.8%	104	38.0%	108	39.4%	110	40.1%	112	40.9%	112	40.9%
	EOF	100	3	3.0%	13	13.0%	20	20.0%	24	24.0%	24	24.0%	24	24.0%	25	25.0%
	Special	47	3	6.4%	8	17.0%	8	17.0%	9	19.1%	9	19.1%	10	21.3%	10	21.3%
	Total	421	61	14.5%	119	28.3%	132	31.4%	141	33.5%	143	34.0%	146	34.7%	147	34.9%
1991	Regular	298	57	19.1%	119	39.9%	131	44.0%	135	45.3%	135	45.3%	137	46.0%	137	46.0%
	EOF	85	3	3.5%	11	12.9%	14	16.5%	17	20.0%	17	20.0%	18	21.2%	18	21.2%
	Special	42	9	21.4%	13	31.0%	16	38.1%	18	42.9%	18	42.9%	18	42.9%	19	45.2%
	Total	425	69	16.2%	143	33.6%	161	37.9%	170	40.0%	170	40.0%	173	40.7%	174	40.9%
1992	Regular	279	71	25.4%	126	45.2%	136	48.7%	139	49.8%	142	50.9%	142	50.9%	142	50.9%
	EOF	98	2	2.0%	16	16.3%	21	21.4%	22	22.4%	22	22.4%	22	22.4%	22	22.4%
	Special	42	4	9.5%	10	23.8%	15	35.7%	16	38.1%	16	38.1%	16	38.1%	16	38.1%
	Total	419	77	18.4%	152	36.3%	172	41.1%	177	42.2%	180	43.0%	180	43.0%	180	43.0%
1993	Regular	240	58	24.2%	105	43.8%	111	46.3%	113	47.1%	113	47.1%	113	47.1%	113	47.1%
	EOF	83	1	1.2%	8	9.6%	13	15.7%	15	18.1%	16	19.3%	16	19.3%	16	19.3%
	Special	39	3	7.7%	14	35.9%	17	43.6%	17	43.6%	17	43.6%	17	43.6%	19	48.7%
	Total	362	62	17.1%	127	35.1%	141	39.0%	145	40.1%	146	40.3%	146	40.3%	148	40.9%
1994	Regular	217	60	27.6%	100	46.1%	111	51.2%	115	53.0%	115	53.0%	117	53.9%	117	53.9%
	EOF	90	6	6.7%	23	25.6%	25	27.8%	26	28.9%	26	28.9%	26	28.9%	26	28.9%
	Special	36	7	19.4%	17	47.2%	19	52.8%	20	55.6%	20	55.6%	20	55.6%	20	55.6%
	Total	343	73	21.3%	140	40.8%	155	45.2%	161	46.9%	161	46.9%	163	47.5%	163	47.5%
1995	Regular	183	52	28.4%	95	51.9%	98	53.6%	99	54.1%	100	54.6%	101	55.2%	101	55.2%
	EOF	97	4	4.1%	17	17.5%	27	27.8%	30	30.9%	32	33.0%	33	34.0%	33	34.0%
	Special	39	11	28.2%	21	53.8%	24	61.5%	24	61.5%	24	61.5%	24	61.5%	24	61.5%
	Total	319	67	21.0%	133	41.7%	149	46.7%	153	48.0%	156	48.9%	158	49.5%	158	49.5%
1996	Regular	296	87	29.4%	155	52.4%	169	57.1%	172	58.1%	173	58.4%	174	58.8%	174	58.8%
	EOF	74	9	12.2%	27	36.5%	32	43.2%	33	44.6%	34	45.9%	34	45.9%	34	45.9%
	Special	43	6	14.0%	23	53.5%	23	53.5%	23	53.5%	23	53.5%	23	53.5%	23	53.5%
	Total	413	102	24.7%	205	49.6%	224	54.2%	228	55.2%	230	55.7%	231	55.9%	231	55.9%
1997	Regular	340	114	33.5%	172	50.6%	186	54.7%	190	55.9%	194	57.1%	196	57.6%	-	-
	EOF	67	11	16.4%	29	43.3%	34	50.7%	36	53.7%	37	55.2%	38	56.7%	-	-
	Special	47	6	12.8%	21	44.7%	24	51.1%	25	53.2%	25	53.2%	26	55.3%	-	-
	Total	454	131	28.9%	222	48.9%	244	53.7%	251	55.3%	256	56.4%	260	57.3%	-	-
1998	Regular	352	122	34.7%	211	59.9%	231	65.6%	236	67.0%	236	67.0%	-	-	-	-
	EOF	69	15	21.7%	33	47.8%	37	53.6%	37	53.6%	38	55.1%	-	-	-	-
	Special	51	13	25.5%	23	45.1%	26	51.0%	26	51.0%	26	51.0%	-	-	-	-
	Total	472	150	31.8%	267	56.6%	294	62.3%	299	63.3%	300	63.6%	-	-	-	-
1999	Regular	414	172	41.5%	235	56.8%	252	60.9%	252	60.9%	-	-	-	-	-	-
	EOF	60	20	33.3%	27	45.0%	30	50.0%	31	51.7%	-	-	-	-	-	-
	Special	54	11	20.4%	26	48.1%	29	53.7%	29	53.7%	-	-	-	-	-	-
	Total	528	203	38.4%	288	54.5%	311	59.4%	312	59.1%	-	-	-	-	-	-
2000	Regular	511	250	48.9%	341	66.7%	353	69.1%	-	-	-	-	-	-	-	-
	EOF	64	16	25.0%	31	48.4%	35	54.7%	-	-	-	-	-	-	-	-
	Special	63	18	28.6%	30	47.6%	31	49.2%	-	-	-	-	-	-	-	-
	Total	638	284	44.5%	402	63.0%	419	66.1%	-	-	-	-	-	-	-	-
2001	Regular	497	265	53.3%	329	66.2%	-	-	-	-	-	-	-	-	-	-
	EOF	69	18	26.1%	30	43.5%	-	-	-	-	-	-	-	-	-	-
	Special	62	21	33.9%	34	54.8%	-	-	-	-	-	-	-	-	-	-
	Total	628	304	48.4%	393	62.6%	-	-	-	-	-	-	-	-	-	-
2002	Regular	543	289	53.2%	-	-	-	-	-	-	-	-	-	-	-	-
	EOF	73	17	23.3%	-	-	-	-	-	-	-	-	-	-	-	-
	Special	68	24	35.3%	-	-	-	-	-	-	-	-	-	-	-	-
	Total	684	330	48.2%	-	-	-	-	-	-	-	-	-	-	-	-

[1] Includes all from cohort who are graduated in fewer than four years.