

**SECTION III:**  
**ENROLLMENT**

2006 INSTITUTIONAL PROFILE

TOTAL FALL 2006 ENROLLMENT = 5,499

**By Age**

Less than 20	1,463	26.6%
20 to 24	2,972	54.1%
25 to 29	401	7.3%
30 to 39	291	5.3%
Greater than 39	371	6.7%
Missing	1	N/A

**By Sex**

Female	3,328	60.5%
Male	2,171	39.5%

**By Ethnicity**

American Indian/Native Alaskan	16	0.3%
Asian/Pacific Islander	269	4.9%
Black, non-Hispanic	350	6.4%
Hispanic	438	8.0%
White, non-Hispanic	4,426	80.5%

**By Citizenship**

U.S. Citizen/Permanent Resident	5,329	96.9%
non-Citizen/non-Resident	170	3.1%

**By Ethnicity and Citizenship**

American Indian/Native Alaskan	16	0.3%
Asian/Pacific Islander	230	4.2%
Black, non-Hispanic	325	5.9%
Hispanic	426	7.7%
White, non-Hispanic	4,332	78.8%
Nonresident Alien	170	3.1%

**By State of Origin**

New Jersey	4,972	90.4%
New York	313	5.7%
Other U.S. State/Territory	44	0.8%
Foreign Country	170	3.1%

TOTAL FALL 2006 ENROLLMENT = 5,499

	First-time Undergraduate		Transfer Undergraduate		Readmitted Undergraduate		Continuing Undergraduate		First-time/Transfer Graduate		Continuing/Readmit Graduate		All Nondegree (Undergrad/Grad)	
	Number	Percent	Number	Percent	Number	Percent	Number	Percent	Number	Percent	Number	Percent	Number	Percent
<b>By Age</b>														
< 20	797	97.9%	87	14.3%	0	0.0%	535	15.6%	0	0.0%	0	0.0%	44	11.0%
20 to 24	17	2.1%	399	65.4%	24	40.7%	2,402	70.2%	7	12.1%	3	2.2%	120	30.1%
25 to 29	0	0.0%	54	8.9%	16	27.1%	189	5.5%	17	29.3%	41	30.4%	84	21.1%
30 to 39	0	0.0%	35	5.7%	12	20.3%	150	4.4%	12	20.7%	29	21.5%	53	13.3%
> 39	0	0.0%	35	5.7%	7	11.9%	147	4.3%	22	37.9%	62	45.9%	98	24.6%
missing	--	--	--	--	--	--	--	--	--	--	1	0.7%	--	--
	814		610		59		3,423		58		136		399	
<b>By Sex</b>														
Female	475	58.4%	351	57.5%	32	54.2%	2,055	60.0%	42	72.4%	108	79.4%	265	66.4%
Male	339	41.6%	259	42.5%	27	45.8%	1,368	40.0%	16	27.6%	28	20.6%	134	33.6%
	814		610		59		3,423		58		136		399	
<b>By Ethnicity</b>														
Am. Ind./Nat. Al.	4	0.5%	4	0.7%	0	0.0%	7	0.2%	0	0.0%	0	0.0%	1	0.3%
Asian/Pac. Is.	35	4.3%	39	6.4%	1	1.7%	169	4.9%	2	3.4%	6	4.4%	17	4.3%
Black, non-Hisp.	71	8.7%	38	6.2%	1	1.7%	216	6.3%	5	8.6%	7	5.1%	12	3.0%
Hispanic	91	11.2%	61	10.0%	6	10.2%	259	7.6%	2	3.4%	4	2.9%	15	3.8%
White, non-Hisp.	613	75.3%	468	76.7%	51	86.4%	2,772	81.0%	49	84.5%	119	87.5%	354	88.7%
	814		610		59		3,423		58		136		399	
<b>By Citizenship</b>														
U.S. Citizen/Resident	784	96.3%	595	97.5%	59	100.0%	3,336	97.5%	56	96.6%	135	99.3%	364	91.2%
non-Citizen/non-Res.	30	3.7%	15	2.5%	0	0.0%	87	2.5%	2	3.4%	1	0.7%	35	8.8%
	814		610		59		3,423		58		136		399	
<b>By Ethnicity &amp; Citizenship</b>														
Am. Ind./Nat. Al.	4	0.5%	4	0.7%	0	0.0%	7	0.2%	0	0.0%	0	0.0%	1	0.3%
Asian/Pac. Is.	29	3.6%	30	4.9%	1	1.7%	147	4.3%	2	3.4%	6	4.4%	15	3.8%
Black, non-Hisp.	67	8.2%	37	6.1%	1	1.7%	198	5.8%	5	8.6%	7	5.1%	10	2.5%
Hispanic	90	11.1%	58	9.5%	6	10.2%	257	7.5%	2	3.4%	4	2.9%	9	2.3%
White, non-Hisp.	594	73.0%	466	76.4%	51	86.4%	2,727	79.7%	47	81.0%	118	86.8%	329	82.5%
Nonresident Alien	30	3.7%	15	2.5%	0	0.0%	87	2.5%	2	3.4%	1	0.7%	35	8.8%
	814		610		59		3,423		58		136		399	
<b>By State of Origin</b>														
New Jersey	762	93.6%	532	87.2%	51	86.4%	3,127	91.4%	53	91.4%	128	94.1%	319	79.9%
New York	19	2.3%	60	9.8%	8	13.6%	183	5.3%	2	3.4%	7	5.1%	34	8.5%
Other U.S. State/Ter.	3	0.4%	3	0.5%	0	0.0%	26	0.8%	1	1.7%	0	0.0%	11	2.8%
Foreign Country	30	3.7%	15	2.5%	0	0.0%	87	2.5%	2	3.4%	1	0.7%	35	8.8%
	814		610		59		3,423		58		136		399	

TOTAL FALL 2006 ENROLLMENT = 5,499

**By Veteran Status**

Veteran/Dependent of Deceased Veteran	11	0.2%
Non-Veteran	5,488	99.8%

**By Disability Status**

Disabled	198	3.6%
Not Disabled	5,301	96.4%

**By Matriculation Status**

Degree-seeking	5,100	92.7%
Nondegree-seeking	399	7.3%

**By Attendance Status**

Full-time	4,519	82.2%
Part-time	980	17.8%

**By Undergraduate/Graduate Status**

Total Undergraduate	5,188	94.3%
Total Graduate	311	5.7%

**By Undergraduate Class (N=5,188)**

Freshmen	1,263	25.7%
Sophomores	1,137	23.2%
Juniors	1,351	27.5%
Seniors	1,155	23.5%
Unclassified UG/Nondegree-Seeking	282	N/A

**By Undergraduate Special Programs (N=5,188)**

EOF	307	5.9%
EOF Honor's Program	0	0.0%
Honor's Program	98	1.9%
No Special Program Designation	4,783	92.2%

**By Status When First Admitted (UG only N=5,188)**

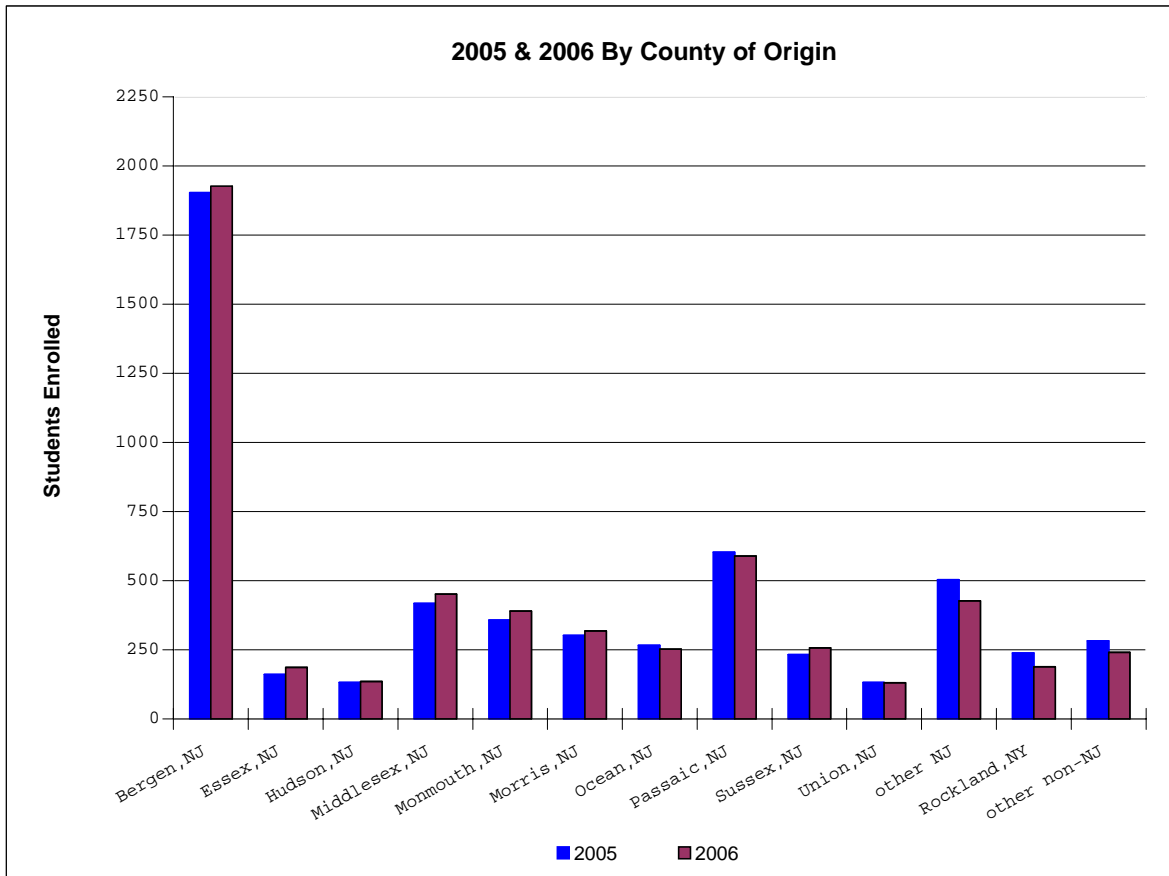
EOF Admit	271	5.9%
EOF Transfer Admit	33	0.7%
Regular Admit	2,502	54.4%
Special Admit	271	5.9%
Transfer Admit	1,829	39.7%
Unclassified UG/Non-Matriculated	282	N/A

TOTAL FALL 2006 ENROLLMENT = 5,499

	First-time Undergraduate		Transfer Undergraduate		Readmitted Undergraduate		Continuing Undergraduate		First-time/Transfer Graduate		Continuing/Readmit Graduate		All Nondegree (Undergrad/Grad)	
	Number	Percent	Number	Percent	Number	Percent	Number	Percent	Number	Percent	Number	Percent	Number	Percent
<b>By Veteran Status</b>														
Veteran/Dependent	0	0.0%	0	0.0%	0	0.0%	11	0.3%	0	0.0%	0	0.0%	0	0.0%
Non-Veteran	814	100.0%	610	100.0%	59	100.0%	3,412	99.7%	58	100.0%	136	100.0%	399	100.0%
	814		610		59		3,423		58		136		399	
<b>By Disability Status</b>														
Disabled	32	3.9%	14	2.3%	6	10.2%	140	4.1%	2	3.4%	0	0.0%	4	1.0%
Not Disabled	782	96.1%	596	97.7%	53	89.8%	3,283	95.9%	56	96.6%	136	100.0%	395	99.0%
	814		610		59		3,423		58		136		399	
<b>By Attend. Status</b>														
Full-time	813	99.9%	540	88.5%	29	49.2%	3,043	88.9%	3	5.2%	1	0.7%	90	22.6%
Part-time	1	0.1%	70	11.5%	30	50.8%	380	11.1%	55	94.8%	135	99.3%	309	77.4%
	814		610		59		3,423		58		136		399	
<b>By Undergrad vs. Grad</b>														
Undergraduate	814	100.0%	610	100.0%	59	100.0%	3,423	100.0%	0	0.0%	0	0.0%	282	70.7%
Graduate	0	0.0%	0	0.0%	0	0.0%	0	0.0%	58	100.0%	136	100.0%	117	29.3%
	814		610		59		3,423		58		136		399	
<b>By UG Class (N=5,188)</b>														
Freshmen	813	99.9%	145	23.8%	3	5.1%	302	8.8%	0	0.0%	0	0.0%	0	0.0%
Sophomores	1	0.1%	265	43.4%	10	16.9%	861	25.2%	0	0.0%	0	0.0%	0	0.0%
Juniors	0	0.0%	191	31.3%	25	42.4%	1,135	33.2%	0	0.0%	0	0.0%	0	0.0%
Seniors	0	0.0%	9	1.5%	21	35.6%	1,125	32.9%	0	0.0%	0	0.0%	0	0.0%
Unclassified UG	0	N/A	0	N/A	0	N/A	0	N/A	0	N/A	0	N/A	282	N/A
	814		610		59		3,423		0		0		282	
<b>By UG Spec. Pr. (N=5,188)</b>														
EOF	85	10.9%	15	2.5%	2	3.4%	205	6.1%	0	0.0%	0	0.0%	0	0.0%
EOF Honor's Program	0	0.0%	0	0.0%	0	0.0%	0	0.0%	0	0.0%	0	0.0%	0	0.0%
Honor's Program	37	4.8%	0	0.0%	0	0.0%	60	1.8%	0	0.0%	0	0.0%	1	0.4%
No Spec. Pr. Desig.	692	89.1%	595	97.5%	57	96.6%	3,158	93.9%	0	0.0%	0	0.0%	281	99.6%
	814		610		59		3,423		0		0		282	
<b>By UG Admit Status (N=5,188)</b>														
EOF	85	10.4%	0	0.0%	2	3.4%	205	6.0%	0	0.0%	0	0.0%	0	0.0%
EOF Transfer	0	0.0%	15	2.5%	0	0.0%	0	0.0%	0	0.0%	0	0.0%	0	0.0%
Regular	649	79.7%	0	0.0%	57	96.6%	3,026	88.4%	0	0.0%	0	0.0%	0	0.0%
Special	80	9.8%	0	0.0%	0	0.0%	192	5.6%	0	0.0%	0	0.0%	1	0.4%
Transfer	0	0.0%	595	97.5%	0	0.0%	0	0.0%	0	0.0%	0	0.0%	0	0.0%
Unclassified UG	0	N/A	0	N/A	0	N/A	0	N/A	0	N/A	0	N/A	281	N/A
	814		610		59		3,423		0		0		282	

**By County of Origin**

Atlantic	14	0.3%	Salem	2	0.0%	
Bergen	1,847	33.6%	Somerset	91	1.7%	
Burlington	46	0.8%	Sussex	256	4.7%	
Camden	50	0.9%	Union	130	2.4%	
Cape May	9	0.2%	Warren	<u>71</u>	<u>1.3%</u>	
Cumberland	11	0.2%		Subtotal	4,972	90.4%
Essex	184	3.3%	Rockland	173	3.1%	
Gloucester	26	0.5%	Orange	89	1.6%	
Hudson	132	2.4%	Westchester	13	0.2%	
Hunterdon	54	1.0%	Other non-NJ	82	1.5%	
Mercer	52	0.9%	International	<u>170</u>	<u>3.1%</u>	
Middlesex	452	8.2%		Subtotal	527	9.6%
Monmouth	390	7.1%				
Morris	318	5.8%				
Ocean	252	4.6%				
Passaic	585	10.6%				
			<b>TOTAL</b>		<b>5,499</b>	



TOTAL FALL 2006 ENROLLMENT = 5,499

**By Non-Citizen Country of Origin (N=51 countries)**

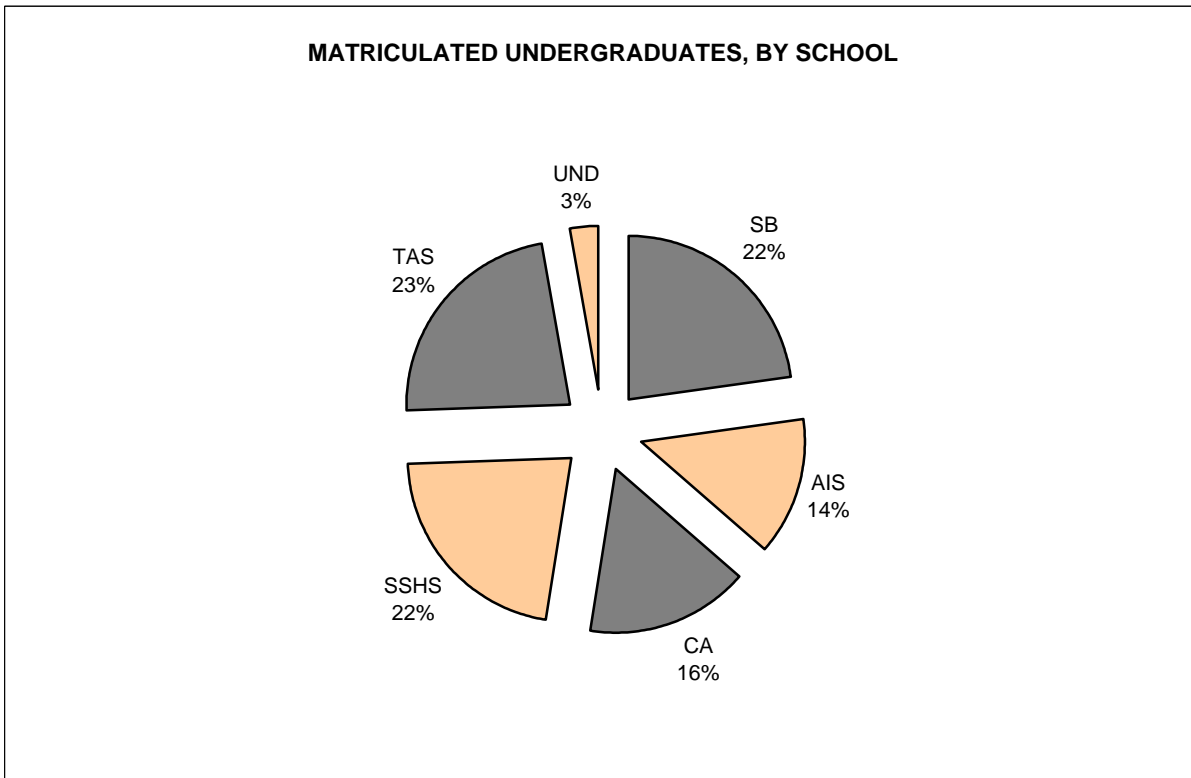
Bulgaria	38	22.4%
Germany	11	6.5%
South Korea	11	6.5%
Poland	9	5.3%
Japan	8	4.7%
Russia	7	4.1%
Trinidad and Tobago	7	4.1%
The Bahamas	6	3.5%
Brazil	5	2.9%
India	4	2.4%
Nigeria	4	2.4%
Jamaica	3	1.8%
Kenya	3	1.8%
Pakistan	3	1.8%
Argentina	2	1.2%
Bahrain	2	1.2%
Canada	2	1.2%
Croatia	2	1.2%
Ethiopia	2	1.2%
France	2	1.2%
Iraq	2	1.2%
Israel	2	1.2%
Peru	2	1.2%
Philippines	2	1.2%
Romania	2	1.2%
South Africa	2	1.2%
Spain	2	1.2%
Yugoslavia	2	1.2%
Bangladesh	1	0.6%
Cambodia	1	0.6%
China	1	0.6%
Colombia	1	0.6%
Costa Rica	1	0.6%
Ecuador	1	0.6%
El Salvador	1	0.6%
Estonia	1	0.6%
Indonesia	1	0.6%
Mauritius	1	0.6%
Moldova	1	0.6%
Mongolia	1	0.6%
Morocco	1	0.6%
Nepal	1	0.6%
Netherlands	1	0.6%
Panama	1	0.6%
Slovakia	1	0.6%
Sri Lanka	1	0.6%
St. Vincent and Grenadin	1	0.6%
Sweden	1	0.6%
Tanzania	1	0.6%
Uganda	1	0.6%
Ukraine	1	0.6%

170

TOTAL FALL 2006 ENROLLMENT = 5,499

**By School, Matriculated Undergraduates (N=4,906)**

School of Business	1,111	22.6%
American and International Studies	674	13.7%
Contemporary Arts	787	16.0%
Social Science and Human Services	1,083	22.1%
Theoretical and Applied Sciences	1,116	22.7%
Matriculated - School Undecided	135	2.8%

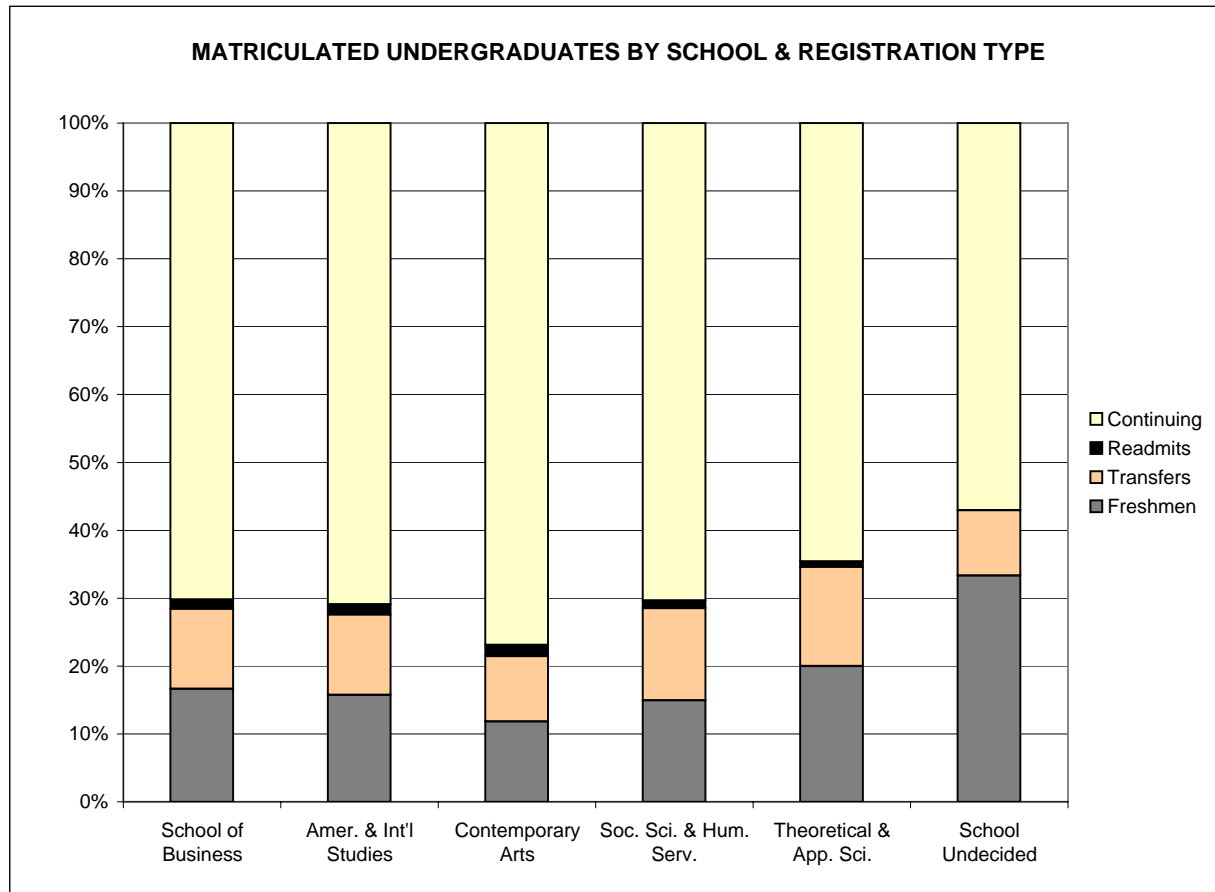




TOTAL FALL 2006 ENROLLMENT = 5,499

By UG School [1]	First-time Undergraduate		Transfer Undergraduate		Readmitted Undergraduate		Continuing Undergraduate	
	Number	Row Percent	Number	Row Percent	Number	Row Percent	Number	Row Percent
School of Business	185	16.7%	131	11.8%	15	1.4%	780	70.2%
Amer. & Int'l Studies	106	15.7%	80	11.9%	10	1.5%	478	70.9%
Contemporary Arts	93	11.8%	76	9.7%	13	1.7%	605	76.9%
Soc. Sci. & Hum. Serv.	162	15.0%	147	13.6%	12	1.1%	762	70.4%
Theoretical & App. Sci.	223	20.0%	163	14.6%	9	0.8%	721	64.6%
School Undecided	45	33.3%	13	9.6%	0	0.0%	77	57.0%
	814	16.6%	610	12.4%	59	1.2%	3,423	69.8%

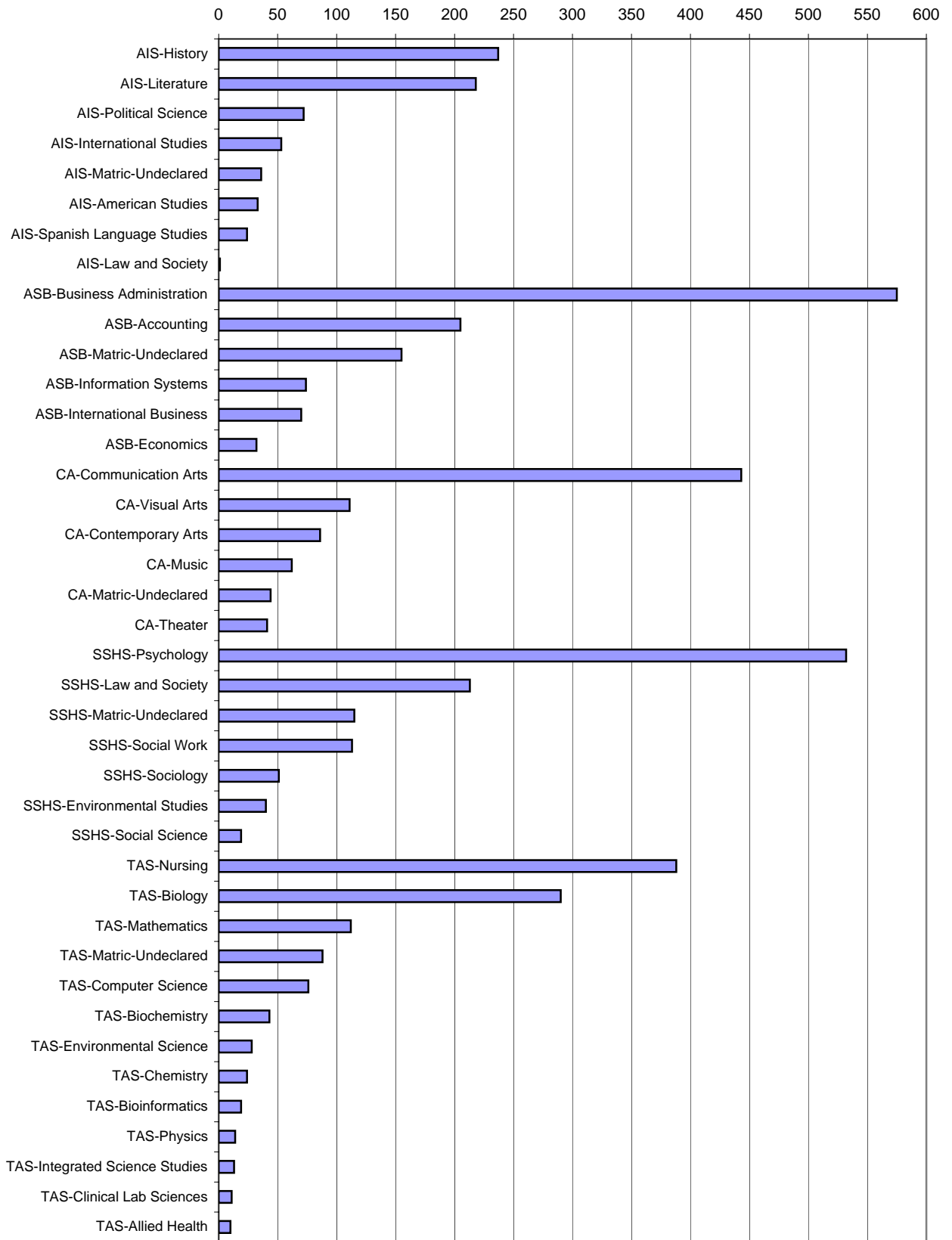
[1] Matriculated undergraduates (N=4,906)



**By School and Major, Matriculated Undergraduates (N=4,906)**

ASB	Accounting	205	4.2%
	Business Administration	575	11.7%
	Economics	32	0.7%
	Information Systems	74	1.5%
	International Business	70	1.4%
	Matriculated- Undecided Major	155	3.2%
AIS	American Studies	33	0.7%
	History	237	4.8%
	International Studies	53	1.1%
	Law and Society	1	0.0%
	Literature	218	4.4%
	Political Science	72	1.5%
	Spanish	24	0.5%
	Matriculated- Undecided Major	36	0.7%
CA	Communication Arts	443	9.0%
	Contemporary Arts	86	1.8%
	Music	62	1.3%
	Theater	41	0.8%
	Visual Arts	111	2.3%
	Matriculated- Undecided Major	44	0.9%
SSHS	Environmental Studies	40	0.8%
	Law and Society	213	4.3%
	Psychology	532	10.8%
	Social Science	19	0.4%
	Social Work	113	2.3%
	Sociology	51	1.0%
	Matriculated- Undecided Major	115	2.3%
TAS	Allied Health	10	0.2%
	Biochemistry	43	0.9%
	Bioinformatics	19	0.4%
	Biology	290	5.9%
	Chemistry	24	0.5%
	Clinical Lab Science	11	0.2%
	Computer Science	76	1.5%
	Environmental Science	28	0.6%
	Integrated Science	13	0.3%
	Mathematics	112	2.3%
	Nursing	388	7.9%
	Physics	14	0.3%
	Matriculated- Undecided Major	88	1.8%
UND	School & Major Undecided	135	2.8%

**FALL 2006 MATRICULATED UNDERGRADUATE  
ENROLLMENT BY SCHOOL AND MAJOR**

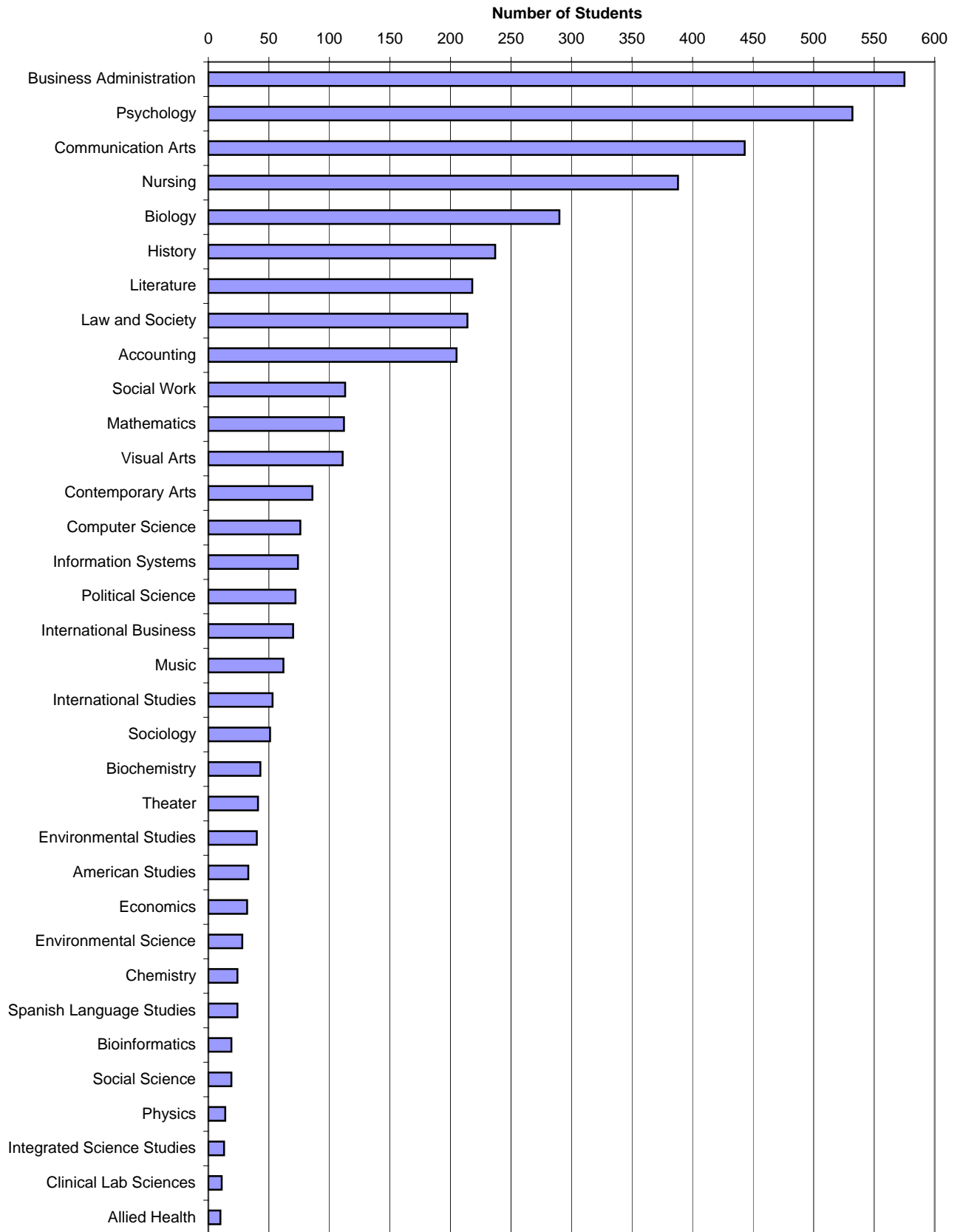


**By Major, Matriculated Undergraduates (N=4,906)**

Accounting	205	4.7%
Allied Health	10	0.2%
American Studies	33	0.8%
Visual Arts	111	2.6%
Business Administration	575	13.3%
Biochemistry	43	1.0%
Bioinformatics	19	0.4%
Biology	290	6.7%
Chemistry	24	0.6%
Clinical Lab Sciences	11	0.3%
Computer Science	76	1.8%
Contemporary Arts	86	2.0%
Communication Arts	443	10.2%
Economics	32	0.7%
Environmental Science	28	0.6%
Environmental Studies	40	0.9%
History	237	5.5%
International Business	70	1.6%
Information Systems	74	1.7%
Integrated Science Studies	13	0.3%
International Studies	53	1.2%
Law and Society	214	4.9%
Literature	218	5.0%
Mathematics	112	2.6%
Music	62	1.4%
Nursing	388	9.0%
Physics	14	0.3%
Political Science	72	1.7%
Psychology	532	12.3%
Sociology	51	1.2%
Social Science	19	0.4%
Spanish Language Studies	24	0.6%
Social Work	113	2.6%
Theater	41	0.9%
Undecided Major	573	N/A
	4,906	

TOTAL FALL 2006 ENROLLMENT = 5,499

**FALL 2006 MATRICULATED UNDERGRADUATE  
ENROLLMENT BY PRIMARY MAJOR**



**MATRICULATED UNDERGRADUATES (N=4,906) BY SCHOOL, MAJOR, AND REGISTRATION TYPE**

		First-time Undergraduate		Transfer Undergraduate		Readmitted Undergraduate		Continuing Undergraduate	
		Number	Row Pct	Number	Row Pct	Number	Row Pct	Number	Row Pct
ASB	Accounting	22	10.7%	16	7.8%	6	2.9%	161	78.5%
	Business Administration	76	13.2%	71	12.3%	6	1.0%	422	73.4%
	Economics	4	11.4%	3	8.6%	3	8.6%	25	71.4%
	Information Systems	2	2.8%	17	23.9%	0	0.0%	52	73.2%
	International Business	11	15.7%	12	17.1%	0	0.0%	47	67.1%
	Matriculated- Undecided Major	70	45.2%	12	7.7%	0	0.0%	73	47.1%
AIS	American Studies	7	21.2%	2	6.1%	1	3.0%	23	69.7%
	History	39	16.5%	25	10.5%	5	2.1%	168	70.9%
	International Studies	6	11.3%	11	20.8%	0	0.0%	36	67.9%
	Law and Society	1	100.0%	0	0.0%	0	0.0%	0	0.0%
	Literature	21	9.6%	26	11.9%	2	0.9%	169	77.5%
	Political Science	8	11.1%	8	11.1%	2	2.8%	54	75.0%
	Spanish Language Studies	5	20.8%	5	20.8%	0	0.0%	14	58.3%
	Matriculated- Undecided Major	19	52.8%	3	8.3%	0	0.0%	14	38.9%
CA	Communication Arts	49	11.1%	37	8.4%	5	1.1%	352	79.5%
	Contemporary Arts	2	2.3%	6	7.0%	6	7.0%	72	83.7%
	Music	4	6.5%	7	11.3%	0	0.0%	51	82.3%
	Theater	5	12.2%	8	19.5%	0	0.0%	28	68.3%
	Visual Arts	12	10.8%	15	13.5%	2	1.8%	82	73.9%
	Matriculated- Undecided Major	21	47.7%	3	6.8%	0	0.0%	20	45.5%
SSHS	Environmental Studies	2	5.0%	6	15.0%	0	0.0%	32	80.0%
	Law and Society	27	12.7%	27	12.7%	1	0.5%	158	74.2%
	Psychology	63	11.8%	69	13.0%	7	1.3%	393	73.9%
	Social Science	0	0.0%	2	10.5%	0	0.0%	17	89.5%
	Social Work	9	8.0%	21	18.6%	1	0.9%	82	72.6%
	Sociology	5	9.8%	9	17.6%	1	2.0%	36	70.6%
	Matriculated- Undecided Major	56	48.7%	13	11.3%	2	1.7%	44	38.3%
TAS	Allied Health	1	10.0%	6	60.0%	0	0.0%	3	30.0%
	Biochemistry	11	25.6%	5	11.6%	0	0.0%	27	62.8%
	Bioinformatics	2	10.5%	1	5.3%	0	0.0%	16	84.2%
	Biology	61	21.0%	35	12.1%	3	1.0%	191	65.9%
	Chemistry	7	29.2%	1	4.2%	1	4.2%	15	62.5%
	Clinical Lab Science	2	18.2%	1	9.1%	0	0.0%	8	72.7%
	Computer Science	16	21.1%	10	13.2%	0	0.0%	50	65.8%
	Environmental Science	4	14.3%	4	14.3%	0	0.0%	20	71.4%
	Integrated Science	1	7.7%	3	23.1%	0	0.0%	9	69.2%
	Mathematics	25	22.3%	12	10.7%	1	0.9%	74	66.1%
	Nursing	51	13.1%	74	19.1%	3	0.8%	260	67.0%
	Physics	1	7.1%	0	0.0%	0	0.0%	13	92.9%
	Matriculated- Undecided Major	41	46.6%	11	12.5%	1	1.1%	35	39.8%
UND	School & Major Undecided	45	33.3%	13	9.6%	0	0.0%	77	57.0%
		814	16.6%	610	12.4%	59	1.2%	3,423	69.8%

**By School, Major and Concentration/Track, Matriculated Undergraduates**

<u>Anisfield School of Business</u>		Count	Pct. of Major
Business Administration	Finance	137	23.8%
	Management	240	41.7%
	Marketing	168	29.2%
	Unspecified	<u>30</u>	5.2%
		575	
<u>Contemporary Arts</u>			
Communication Arts	Creative Writing	33	7.4%
	Design & Interactive Media	53	12.0%
	Digital Filmmaking	66	14.9%
	Graphic Design	3	0.7%
	Interdisciplinary	1	0.2%
	Journalism	59	13.3%
	Media & Cinema Studies	102	23.0%
	Unspecified	<u>126</u>	28.4%
		443	
Music	Music Industry	11	17.7%
	Music Production	6	9.7%
	Music Performance	8	12.9%
	Music Studies	8	12.9%
	Unspecified	<u>29</u>	46.8%
	62		
Theater	Acting	16	39.0%
	Design/Technical Theater	3	7.3%
	Directing/Stage Management	3	7.3%
	Unspecified	<u>19</u>	46.3%
	41		
Visual Arts	Art History	5	4.5%
	Drawing and Painting	30	27.0%
	New Media	4	3.6%
	Photography	8	7.2%
	Sculpture	5	4.5%
	Unspecified	<u>59</u>	53.2%
	111		
<u>Social Science and Human Services</u>			
Social Sciences	Africana Studies	2	10.0%
	Cultural Studies	2	10.0%
	Community Mental Health	4	20.0%
	Ethnic Relations	1	5.0%
	Gender Studies	1	5.0%
	Unspecified	<u>10</u>	50.0%
	20		
<u>Theoretical and Applied Science</u>			
Biology	Physician's Assistant	11	3.8%
	Physical Therapy	52	17.9%
	Chiropractic	1	0.3%
	Dental	6	2.1%
	Optometry	1	0.3%
	Unspecified	<u>219</u>	75.5%
	290		
Nursing	Generic BSN	291	75.0%
	RN/BSN	<u>97</u>	25.0%
	388		

**Provisional Status by Major and Concentration/Track, Matriculated Undergraduates**

Major and Concentration/Track	Officially Accepted Majors		Provisional Majors		Total Majors
	Number	Pct. of Total	Number	Pct. of Total	
Accounting	140	68.3%	65	31.7%	205
Bus. Adm. (Finance)	80	58.4%	57	41.6%	137
Bus. Adm. (Management)	151	62.9%	89	37.1%	240
Bus. Adm. (Marketing)	107	63.7%	61	36.3%	168
Bus. Adm. (Unspecified)	<u>10</u>	<u>33.3%</u>	<u>20</u>	<u>66.7%</u>	<u>30</u>
	<b>348</b>	<b>60.5%</b>	<b>227</b>	<b>39.5%</b>	<b>575</b>
Com. Art. (Creative Writing)	33	100.0%	0	0.0%	33
Com. Art. (Design & Interactive Media)	51	96.2%	2	3.8%	53
Com. Art. (Digital Filmmaking)	65	98.5%	1	1.5%	66
Com. Art. (Graphic Design)	3	100.0%	0	0.0%	3
Com. Art. (Interdisciplinary)	1	100.0%	0	0.0%	1
Com. Art. (Journalism)	59	100.0%	0	0.0%	59
Com. Art. (Media & Cinema Studies)	99	97.1%	3	2.9%	102
Com. Art. (Unspecified)	<u>122</u>	<u>96.8%</u>	<u>4</u>	<u>3.2%</u>	<u>126</u>
	<b>433</b>	<b>97.7%</b>	<b>10</b>	<b>2.3%</b>	<b>443</b>
Information Systems	59	79.7%	15	20.3%	74
International Business	36	51.4%	34	48.6%	70
Law and Society	169	79.0%	45	21.0%	214
Nursing (RN/BSN)	97	100.0%	0	0.0%	97
Nursing (Generic BSN)	<u>226</u>	<u>77.7%</u>	<u>65</u>	<u>22.3%</u>	<u>291</u>
	<b>323</b>	<b>83.2%</b>	<b>65</b>	<b>16.8%</b>	<b>388</b>
Social Work	108	95.6%	5	4.4%	113
<b>Total</b>	<b>2,720</b>	<b>78.0%</b>	<b>768</b>	<b>22.0%</b>	<b>3,488</b>

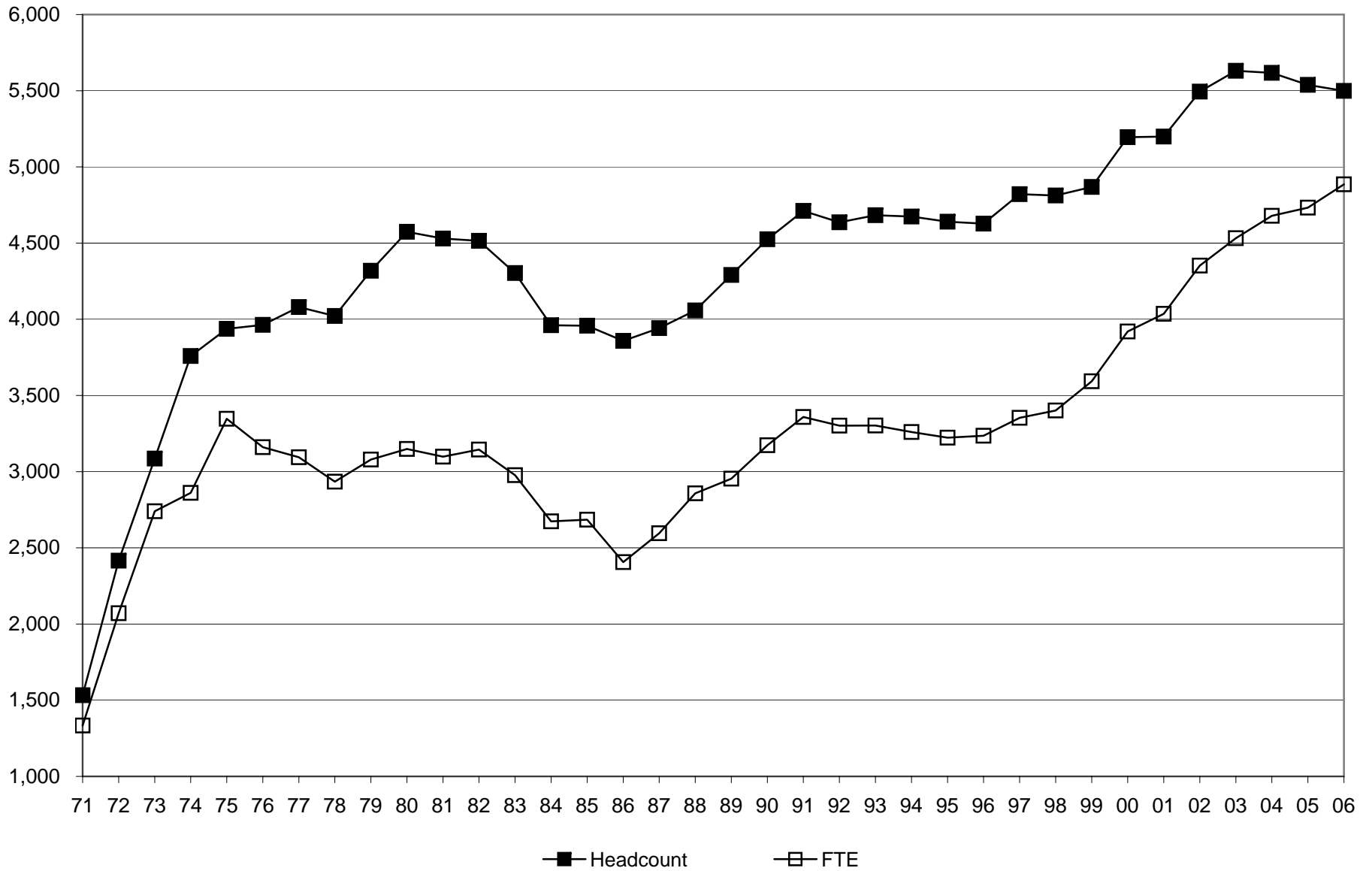


**By Certificate Program**

	Baccalaureate students		Post-baccalaureate students		All Students	
Teacher Certification - Art	7	2.2%	1	2.0%	8	2.2%
Teacher Certification - Biology	5	1.6%	2	3.9%	7	1.9%
Teacher Certification - Business	3	0.9%	2	3.9%	5	1.4%
Teacher Certification - Chemistry	2	0.6%	0	0.0%	2	0.5%
Teacher Certification - Earth Science	4	1.3%	2	3.9%	6	1.6%
Teacher Certification - Elementary Education	164	51.9%	32	62.7%	196	53.4%
Teacher Certification - English	42	13.3%	2	3.9%	44	12.0%
Teacher Certification - Foreign Language/French	0	0.0%	1	2.0%	1	0.3%
Teacher Certification - Foreign Language/Spanish	2	0.6%	0	0.0%	2	0.5%
Teacher Certification - Mathematics	23	7.3%	2	3.9%	25	6.8%
Teacher Certification - Music	5	1.6%	0	0.0%	5	1.4%
Teacher Certification - Physical Science	4	1.3%	1	2.0%	5	1.4%
Teacher Certification - Social Studies	54	17.1%	5	9.8%	59	16.1%
Teacher Certification - Speech Arts & Dramatics	1	0.3%	1	2.0%	2	0.5%
<b>TOTAL</b>	<b>316</b>		<b>51</b>		<b>367</b>	

Year	HEADCOUNT			FTE		
	Total Headcount	Percent Change From Previous Fall Semester	Cumulative Percent Change From Fall 1971	Total FTE	Percent Change From Previous Fall Semester	Cumulative Percent Change From Fall 1971
1971	1,533	N/A	0.0%	1,334	N/A	0.0%
1972	2,416	57.6%	57.6%	2,071	55.2%	55.2%
1973	3,086	27.7%	101.3%	2,740	32.3%	105.4%
1974	3,759	21.8%	145.2%	2,861	4.4%	114.5%
1975	3,937	4.7%	156.8%	3,347	17.0%	150.9%
1976	3,963	0.7%	158.5%	3,161	-5.6%	137.0%
1977	4,080	3.0%	166.1%	3,094	-2.1%	131.9%
1978	4,022	-1.4%	162.4%	2,934	-5.2%	119.9%
1979	4,318	7.4%	181.7%	3,079	4.9%	130.8%
1980	4,574	5.9%	198.4%	3,149	2.3%	136.1%
1981	4,530	-1.0%	195.5%	3,098	-1.6%	132.2%
1982	4,515	-0.3%	194.5%	3,145	1.5%	135.8%
1983	4,303	-4.7%	180.7%	2,977	-5.3%	123.2%
1984	3,961	-7.9%	158.4%	2,674	-10.2%	100.4%
1985	3,958	-0.1%	158.2%	2,685	0.4%	101.3%
1986	3,858	-2.5%	151.7%	2,406	-10.4%	80.4%
1987	3,942	2.2%	157.1%	2,596	7.9%	94.6%
1988	4,058	2.9%	164.7%	2,858	10.1%	114.2%
1989	4,291	5.7%	179.9%	2,954	3.4%	121.4%
1990	4,525	5.5%	195.2%	3,173	7.4%	137.9%
1991	4,711	4.1%	207.3%	3,359	5.9%	151.8%
1992	4,636	-1.6%	202.4%	3,302	-1.7%	147.5%
1993	4,683	1.0%	205.5%	3,303	0.0%	147.6%
1994	4,674	-0.2%	204.9%	3,260	-1.3%	144.4%
1995	4,640	-0.7%	202.7%	3,223	-1.1%	141.6%
1996	4,628	-0.3%	201.9%	3,236	0.4%	142.6%
1997	4,821	4.2%	214.5%	3,353	3.6%	151.3%
1998	4,812	-0.2%	213.9%	3,401	1.4%	154.9%
1999	4,868	1.2%	217.5%	3,593	5.6%	169.3%
2000	5,195	6.7%	238.9%	3,920	9.1%	193.9%
2001	5,199	0.1%	239.1%	4,036	3.0%	202.5%
2002	5,494	5.7%	258.4%	4,352	7.8%	226.2%
2003	5,631	2.5%	267.3%	4,532	4.1%	239.7%
2004	5,617	-0.2%	266.4%	4,679	3.2%	250.7%
2005	5,538	-1.4%	261.3%	4,733	1.2%	254.8%
2006	5,499	-0.7%	258.7%	4,886	3.2%	266.3%

### TOTAL ENROLLMENT, FALL 1971 TO FALL 2006



Year	Undergraduate Headcount			Undergraduate FTE			Graduate Headcount			Graduate FTE		
	Total Undergrad Headcount	Percent Change From Previous Fall Semester	Cumulative Percent Change From Fall 1971	Total Undergrad FTE	Percent Change From Previous Fall Semester	Cumulative Percent Change From Fall 1971	Total Graduate Headcount	Percent Change From Previous Fall Semester	Cumulative Percent Change From Fall 1995	Total Graduate FTE	Percent Change From Previous Fall Semester	Cumulative Percent Change From Fall 1995
1971	1,533	N/A	0.0%	1,334	N/A	0.0%	-	-	-	-	-	-
1972	2,416	57.6%	57.6%	2,071	55.2%	55.2%	-	-	-	-	-	-
1973	3,086	27.7%	101.3%	2,740	32.3%	105.4%	-	-	-	-	-	-
1974	3,759	21.8%	145.2%	2,861	4.4%	114.5%	-	-	-	-	-	-
1975	3,937	4.7%	156.8%	3,347	17.0%	150.9%	-	-	-	-	-	-
1976	3,963	0.7%	158.5%	3,161	-5.6%	137.0%	-	-	-	-	-	-
1977	4,080	3.0%	166.1%	3,094	-2.1%	131.9%	-	-	-	-	-	-
1978	4,022	-1.4%	162.4%	2,934	-5.2%	119.9%	-	-	-	-	-	-
1979	4,318	7.4%	181.7%	3,079	4.9%	130.8%	-	-	-	-	-	-
1980	4,574	5.9%	198.4%	3,149	2.3%	136.1%	-	-	-	-	-	-
1981	4,530	-1.0%	195.5%	3,098	-1.6%	132.2%	-	-	-	-	-	-
1982	4,515	-0.3%	194.5%	3,145	1.5%	135.8%	-	-	-	-	-	-
1983	4,303	-4.7%	180.7%	2,977	-5.3%	123.2%	-	-	-	-	-	-
1984	3,961	-7.9%	158.4%	2,674	-10.2%	100.4%	-	-	-	-	-	-
1985	3,958	-0.1%	158.2%	2,685	0.4%	101.3%	-	-	-	-	-	-
1986	3,858	-2.5%	151.7%	2,406	-10.4%	80.4%	-	-	-	-	-	-
1987	3,942	2.2%	157.1%	2,596	7.9%	94.6%	-	-	-	-	-	-
1988	4,058	2.9%	164.7%	2,858	10.1%	114.2%	-	-	-	-	-	-
1989	4,291	5.7%	179.9%	2,954	3.4%	121.4%	-	-	-	-	-	-
1990	4,525	5.5%	195.2%	3,173	7.4%	137.9%	-	-	-	-	-	-
1991	4,711	4.1%	207.3%	3,359	5.9%	151.8%	-	-	-	-	-	-
1992	4,636	-1.6%	202.4%	3,302	-1.7%	147.5%	-	-	-	-	-	-
1993	4,683	1.0%	205.5%	3,303	0.0%	147.6%	-	-	-	-	-	-
1994	4,674	-0.2%	204.9%	3,260	-1.3%	144.4%	-	-	-	-	-	-
1995	4,543	-2.8%	196.3%	3,176	-2.6%	138.1%	97	N/A	0.0%	47	N/A	0.0%
1996	4,526	-0.4%	195.2%	3,193	0.5%	139.4%	102	5.2%	5.2%	43	-8.5%	-8.5%
1997	4,681	3.4%	205.3%	3,287	2.9%	146.4%	140	37.3%	44.3%	66	53.5%	40.4%
1998	4,658	-0.5%	203.8%	3,350	1.9%	151.1%	154	10.0%	58.8%	51	-22.7%	8.5%
1999	4,655	-0.1%	203.7%	3,508	4.7%	163.0%	213	38.3%	119.6%	85	66.7%	80.9%
2000	4,906	5.4%	220.0%	3,805	8.5%	185.2%	289	35.7%	197.9%	115	35.3%	144.7%
2001	4,890	-0.3%	219.0%	3,918	3.0%	193.7%	309	6.9%	218.6%	118	2.6%	151.1%
2002	5,143	5.2%	235.5%	4,215	7.6%	216.0%	351	13.6%	261.9%	137	16.1%	191.5%
2003	5,242	1.9%	241.9%	4,378	3.9%	228.2%	389	10.8%	301.0%	154	12.4%	227.7%
2004	5,278	0.7%	244.3%	4,536	3.6%	240.0%	339	-12.9%	249.5%	143	-7.1%	204.3%
2005	5,233	-0.9%	241.4%	4,606	1.5%	245.3%	305	-10.0%	214.4%	127	-11.2%	170.2%
2006	5,188	-0.9%	238.4%	4,768	3.5%	257.4%	311	2.0%	220.6%	118	-7.1%	151.1%

**ENROLLMENT TRENDS FOR NEW, TRANSFER, READMITTED, CONTINUING, AND NONDEGREE STUDENTS  
COMBINED UNDERGRADUATE AND GRADUATE, FALL 2002 TO FALL 2006**

	2002		2003		2004		2005		2006		Percent Change 02 to 06	Percent Change 05 to 06
	No.	Pct.	No.	Pct.	No.	Pct.	No.	Pct.	No.	Pct.		
First-time Undergraduates	687	12.5%	725	12.9%	755	13.4%	748	13.5%	814	14.8%	18.5%	8.8%
First-time Graduate Students	<u>95</u>	<u>1.7%</u>	<u>64</u>	<u>1.1%</u>	<u>67</u>	<u>1.2%</u>	<u>68</u>	<u>1.2%</u>	<u>58</u>	<u>1.1%</u>	-38.9%	-14.7%
<i>Subtotal: First-time</i>	782	14.2%	789	14.0%	822	14.6%	816	14.7%	872	15.9%	11.5%	6.9%
Undergraduate Transfers [1]	568	10.3%	498	8.8%	491	8.7%	472	8.5%	610	11.1%	7.4%	29.2%
Graduate Transfers	<u>0</u>	<u>0.0%</u>	<u>0</u>	<u>0.0%</u>	<u>0</u>	<u>0.0%</u>	<u>0</u>	<u>0.0%</u>	<u>0</u>	<u>0.0%</u>	N/A	N/A
<i>Subtotal: Transfers</i>	568	10.3%	498	8.8%	491	8.7%	472	8.5%	610	11.1%	7.4%	29.2%
Undergraduate Readmits [2]	77	1.4%	67	1.2%	82	1.5%	68	1.2%	59	1.1%	-23.4%	-13.2%
Graduate Readmits	<u>2</u>	<u>0.0%</u>	<u>1</u>	<u>0.0%</u>	<u>1</u>	<u>0.0%</u>	<u>1</u>	<u>0.0%</u>	<u>0</u>	<u>0.0%</u>	-100.0%	-100.0%
<i>Subtotal: Readmits</i>	79	1.4%	68	1.2%	83	1.5%	69	1.2%	59	1.1%	-25.3%	-14.5%
Undergraduate Continuing [3]	3,341	60.8%	3,477	61.7%	3,505	62.4%	3,572	64.5%	3,423	62.2%	2.5%	-4.2%
Graduate Continuing	<u>169</u>	<u>3.1%</u>	<u>194</u>	<u>3.4%</u>	<u>175</u>	<u>3.1%</u>	<u>157</u>	<u>2.8%</u>	<u>136</u>	<u>2.5%</u>	-19.5%	-13.4%
<i>Subtotal: Continuing</i>	3,510	63.9%	3,671	65.2%	3,680	65.5%	3,729	67.3%	3,559	64.7%	1.4%	-4.6%
UG Nondegree - New	291	5.3%	305	5.4%	272	4.8%	241	4.4%	165	3.0%	-43.3%	-31.5%
UG Nondegree - Continuing	179	3.3%	170	3.0%	173	3.1%	132	2.4%	117	2.1%	-34.6%	-11.4%
Grad Nondegree - New	57	1.0%	76	1.3%	33	0.6%	25	0.5%	21	0.4%	-63.2%	-16.0%
Grad Nondegree - Continuing	<u>28</u>	<u>0.5%</u>	<u>54</u>	<u>1.0%</u>	<u>63</u>	<u>1.1%</u>	<u>54</u>	<u>1.0%</u>	<u>96</u>	<u>1.7%</u>	242.9%	77.8%
<i>Subtotal: Nondegree</i>	555	10.1%	605	10.7%	541	9.6%	452	8.2%	399	7.3%	-28.1%	-11.7%
<b>TOTAL</b>	<b>5,494</b>		<b>5,631</b>		<b>5,617</b>		<b>5,538</b>		<b>5,499</b>		<b>0.1%</b>	<b>-0.7%</b>

[1] Excludes "stop-outs" (students absent for only one semester who need not apply for formal readmission) and "internal transfers" (students who change from nondegree-seeking to degree-seeking status and have registration type "Ramapo Non-Matriculant").

[2] Excludes "stop-outs" and "internal transfers."

[3] Includes "stop-outs" and "internal transfers."

**ENROLLMENT BY AGE, FALL 2002 TO FALL 2006**

Undergraduate Students	Fall 2002		Fall 2003		Fall 2004		Fall 2005		Fall 2006		Pct. Change 02 to 06	Pct. Change 05 to 06
	No.	Pct.	No.	Pct.	No.	Pct.	No.	Pct.	No.	Pct.		
Less Than 20	1,259	24.5%	1,362	26.0%	1,435	27.2%	1,446	27.6%	1,463	28.2%	16.2%	1.2%
20 to 24	2,652	51.6%	2,725	52.0%	2,778	52.6%	2,857	54.6%	2,953	56.9%	11.3%	3.4%
25 to 29	450	8.7%	465	8.9%	414	7.8%	356	6.8%	310	6.0%	-31.1%	-12.9%
30 to 39	366	7.1%	320	6.1%	301	5.7%	266	5.1%	219	4.2%	-40.2%	-17.7%
40 and Over	416	8.1%	370	7.1%	350	6.6%	308	5.9%	243	4.7%	-41.6%	-21.1%
Missing	0	N/A	0	N/A	0	N/A	0	N/A	0	N/A	N/A	N/A
<b>Total</b>	<b>5,143</b>		<b>5,242</b>		<b>5,278</b>		<b>5,233</b>		<b>5,188</b>		<b>0.9%</b>	<b>-0.9%</b>

Graduate Students	Fall 2002		Fall 2003		Fall 2004		Fall 2005		Fall 2006		Pct. Change 02 to 06	Pct. Change 05 to 06
	No.	Pct.	No.	Pct.	No.	Pct.	No.	Pct.	No.	Pct.		
Less Than 20	0	0.0%	0	0.0%	0	0.0%	0	0.0%	0	0.0%	N/A	N/A
20 to 24	34	9.7%	39	10.0%	28	8.3%	21	6.9%	19	6.1%	-44.1%	-9.5%
25 to 29	96	27.4%	127	32.6%	92	27.1%	85	27.9%	91	29.4%	-5.2%	7.1%
30 to 39	106	30.2%	91	23.4%	87	25.7%	74	24.3%	72	23.2%	-32.1%	-2.7%
40 and Over	115	32.8%	132	33.9%	132	38.9%	125	41.0%	128	41.3%	11.3%	2.4%
Missing	0	N/A	0	N/A	0	N/A	0	N/A	1	N/A	N/A	N/A
<b>Total</b>	<b>351</b>		<b>389</b>		<b>339</b>		<b>305</b>		<b>311</b>		<b>-11.4%</b>	<b>2.0%</b>

All Students	Fall 2002		Fall 2003		Fall 2004		Fall 2005		Fall 2006		Pct. Change 02 to 06	Pct. Change 05 to 06
	No.	Pct.	No.	Pct.	No.	Pct.	No.	Pct.	No.	Pct.		
Less Than 20	1,259	22.9%	1,362	24.2%	1,435	25.5%	1,446	26.1%	1,463	26.6%	16.2%	1.2%
20 to 24	2,686	48.9%	2,764	49.1%	2,806	50.0%	2,878	52.0%	2,972	54.1%	10.6%	3.3%
25 to 29	546	9.9%	592	10.5%	506	9.0%	441	8.0%	401	7.3%	-26.6%	-9.1%
30 to 39	472	8.6%	411	7.3%	388	6.9%	340	6.1%	291	5.3%	-38.3%	-14.4%
40 and Over	531	9.7%	502	8.9%	482	8.6%	433	7.8%	371	6.7%	-30.1%	-14.3%
Missing	0	N/A	0	N/A	0	N/A	0	N/A	1	N/A	N/A	N/A
<b>Total</b>	<b>5,494</b>		<b>5,631</b>		<b>5,617</b>		<b>5,538</b>		<b>5,499</b>		<b>0.1%</b>	<b>-0.7%</b>

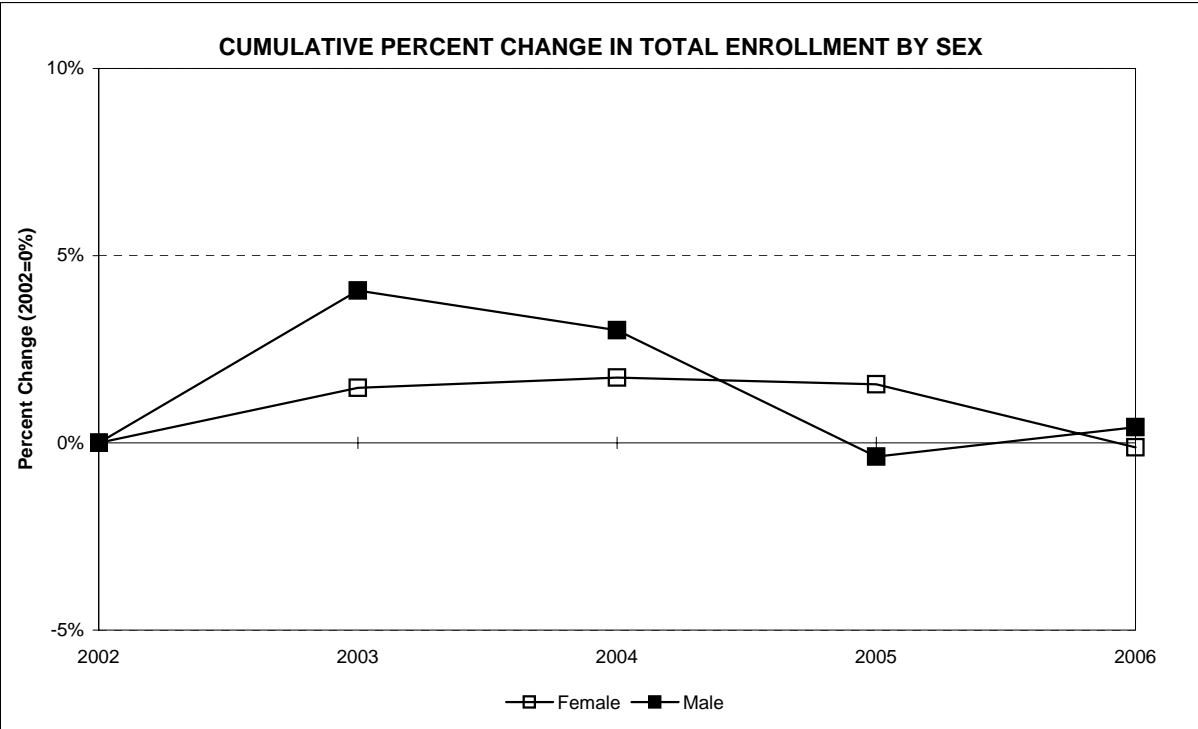
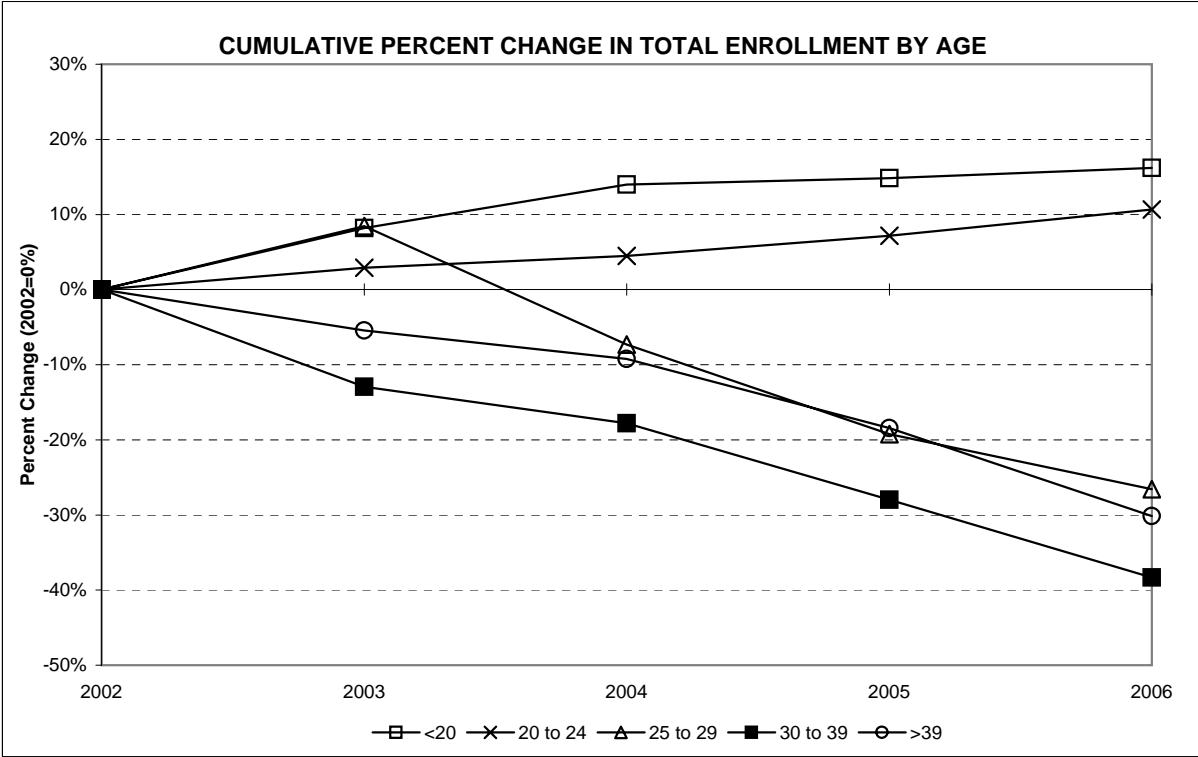


**ENROLLMENT BY SEX, FALL 2002 TO FALL 2006**

Undergraduate Students	Fall 2002		Fall 2003		Fall 2004		Fall 2005		Fall 2006		Pct. Change 02 to 06	Pct. Change 05 to 06
	No.	Pct.	No.	Pct.	No.	Pct.	No.	Pct.	No.	Pct.		
Female	3,127	60.8%	3,137	59.8%	3,139	59.5%	3,139	60.0%	3,088	59.5%	-1.2%	-1.6%
Male	2,016	39.2%	2,105	40.2%	2,139	40.5%	2,094	40.0%	2,100	40.5%	4.2%	0.3%
<b>Total</b>	<b>5,143</b>		<b>5,242</b>		<b>5,278</b>		<b>5,233</b>		<b>5,188</b>		<b>0.9%</b>	<b>-0.9%</b>

Graduate Students	Fall 2002		Fall 2003		Fall 2004		Fall 2005		Fall 2006		Pct. Change 02 to 06	Pct. Change 05 to 06
	No.	Pct.	No.	Pct.	No.	Pct.	No.	Pct.	No.	Pct.		
Female	205	58.4%	244	62.7%	251	74.0%	245	80.3%	240	77.2%	17.1%	-2.0%
Male	146	41.6%	145	37.3%	88	26.0%	60	19.7%	71	22.8%	-51.4%	18.3%
<b>Total</b>	<b>351</b>		<b>389</b>		<b>339</b>		<b>305</b>		<b>311</b>		<b>-11.4%</b>	<b>2.0%</b>

All Students	Fall 2002		Fall 2003		Fall 2004		Fall 2005		Fall 2006		Pct. Change 02 to 06	Pct. Change 05 to 06
	No.	Pct.	No.	Pct.	No.	Pct.	No.	Pct.	No.	Pct.		
Female	3,332	60.6%	3,381	60.0%	3,390	60.4%	3,384	61.1%	3,328	60.5%	-0.1%	-1.7%
Male	2,162	39.4%	2,250	40.0%	2,227	39.6%	2,154	38.9%	2,171	39.5%	0.4%	0.8%
<b>Total</b>	<b>5,494</b>		<b>5,631</b>		<b>5,617</b>		<b>5,538</b>		<b>5,499</b>		<b>0.1%</b>	<b>-0.7%</b>



**ENROLLMENT BY ETHNICITY, FALL 2002 TO FALL 2006**

Undergraduate Students	Fall 2002		Fall 2003		Fall 2004		Fall 2005		Fall 2006		Pct. Change 02 to 06	Pct. Change 05 to 06
	No.	Pct.	No.	Pct.	No.	Pct.	No.	Pct.	No.	Pct.		
American Indian/Nat. Al.	19	0.4%	18	0.3%	18	0.3%	18	0.3%	16	0.3%	-15.8%	-11.1%
Asian/Pacific Islander	266	5.2%	268	5.1%	278	5.3%	261	5.0%	257	5.0%	-3.4%	-1.5%
Black, non-Hispanic	358	7.0%	353	6.7%	349	6.6%	354	6.8%	332	6.4%	-7.3%	-6.2%
Hispanic	419	8.1%	395	7.5%	418	7.9%	417	8.0%	431	8.3%	2.9%	3.4%
White, non-Hispanic	4,081	79.4%	4,208	80.3%	4,215	79.9%	4,183	79.9%	4,152	80.0%	1.7%	-0.7%
Missing	0	N/A	0	N/A	0	N/A	0	N/A	0	N/A	N/A	N/A
<b>Total</b>	<b>5,143</b>		<b>5,242</b>		<b>5,278</b>		<b>5,233</b>		<b>5,188</b>		<b>0.9%</b>	<b>-0.9%</b>

Graduate Students	Fall 2002		Fall 2003		Fall 2004		Fall 2005		Fall 2006		Pct. Change 02 to 06	Pct. Change 05 to 06
	No.	Pct.	No.	Pct.	No.	Pct.	No.	Pct.	No.	Pct.		
American Indian/Nat. Al.	0	0.0%	0	0.0%	1	0.3%	0	0.0%	0	0.0%	N/A	N/A
Asian/Pacific Islander	16	4.6%	13	3.3%	4	1.2%	9	3.0%	12	3.9%	-25.0%	33.3%
Black, non-Hispanic	18	5.1%	10	2.6%	15	4.4%	11	3.6%	18	5.8%	0.0%	63.6%
Hispanic	6	1.7%	13	3.3%	12	3.5%	7	2.3%	7	2.3%	16.7%	0.0%
White, non-Hispanic	311	88.6%	353	90.7%	307	90.6%	278	91.1%	274	88.1%	-11.9%	-1.4%
Missing	0	N/A	0	N/A	0	N/A	0	N/A	0	N/A	N/A	N/A
<b>Total</b>	<b>351</b>		<b>389</b>		<b>339</b>		<b>305</b>		<b>311</b>		<b>-11.4%</b>	<b>2.0%</b>

All Students	Fall 2002		Fall 2003		Fall 2004		Fall 2005		Fall 2006		Pct. Change 02 to 06	Pct. Change 05 to 06
	No.	Pct.	No.	Pct.	No.	Pct.	No.	Pct.	No.	Pct.		
American Indian/Nat. Al.	19	0.3%	18	0.3%	19	0.3%	18	0.3%	16	0.3%	-15.8%	-11.1%
Asian/Pacific Islander	282	5.1%	281	5.0%	282	5.0%	270	4.9%	269	4.9%	-4.6%	-0.4%
Black, non-Hispanic	376	6.8%	363	6.4%	364	6.5%	365	6.6%	350	6.4%	-6.9%	-4.1%
Hispanic	425	7.7%	408	7.2%	430	7.7%	424	7.7%	438	8.0%	3.1%	3.3%
White, non-Hispanic	4,392	79.9%	4,561	81.0%	4,522	80.5%	4,461	80.6%	4,426	80.5%	0.8%	-0.8%
Missing	0	N/A	0	N/A	0	N/A	0	N/A	0	N/A	N/A	N/A
<b>Total</b>	<b>5,494</b>		<b>5,631</b>		<b>5,617</b>		<b>5,538</b>		<b>5,499</b>		<b>0.1%</b>	<b>-0.7%</b>



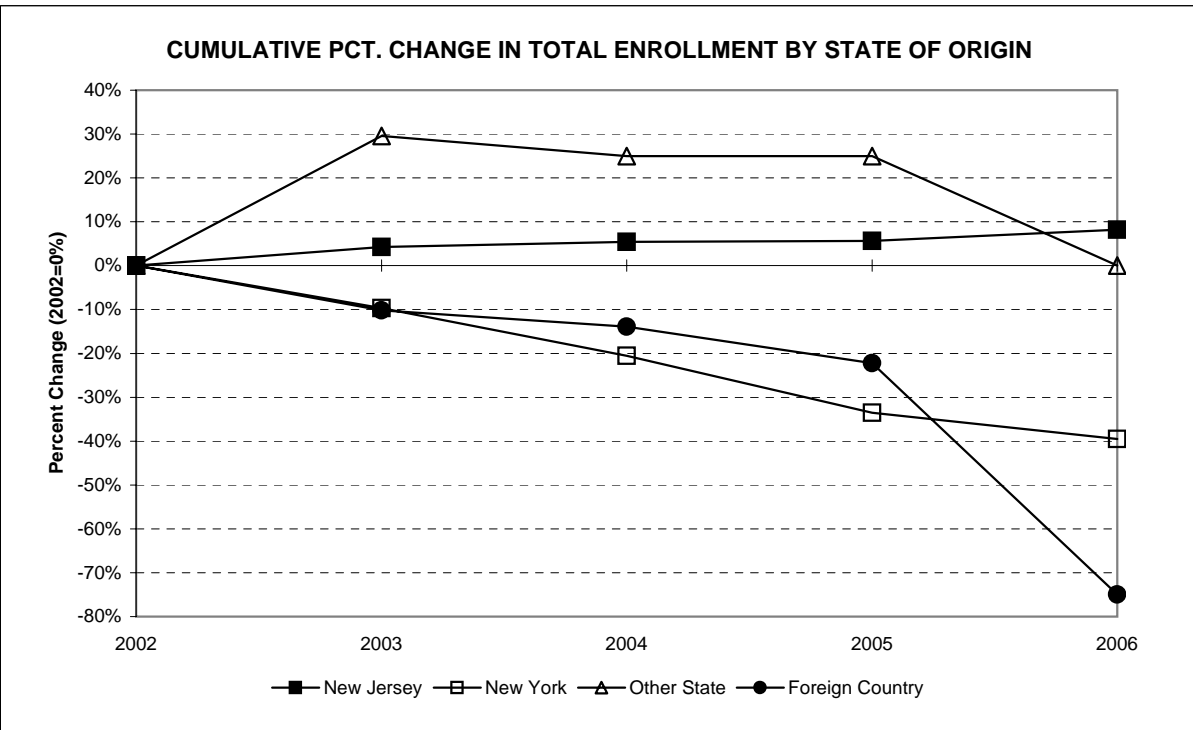
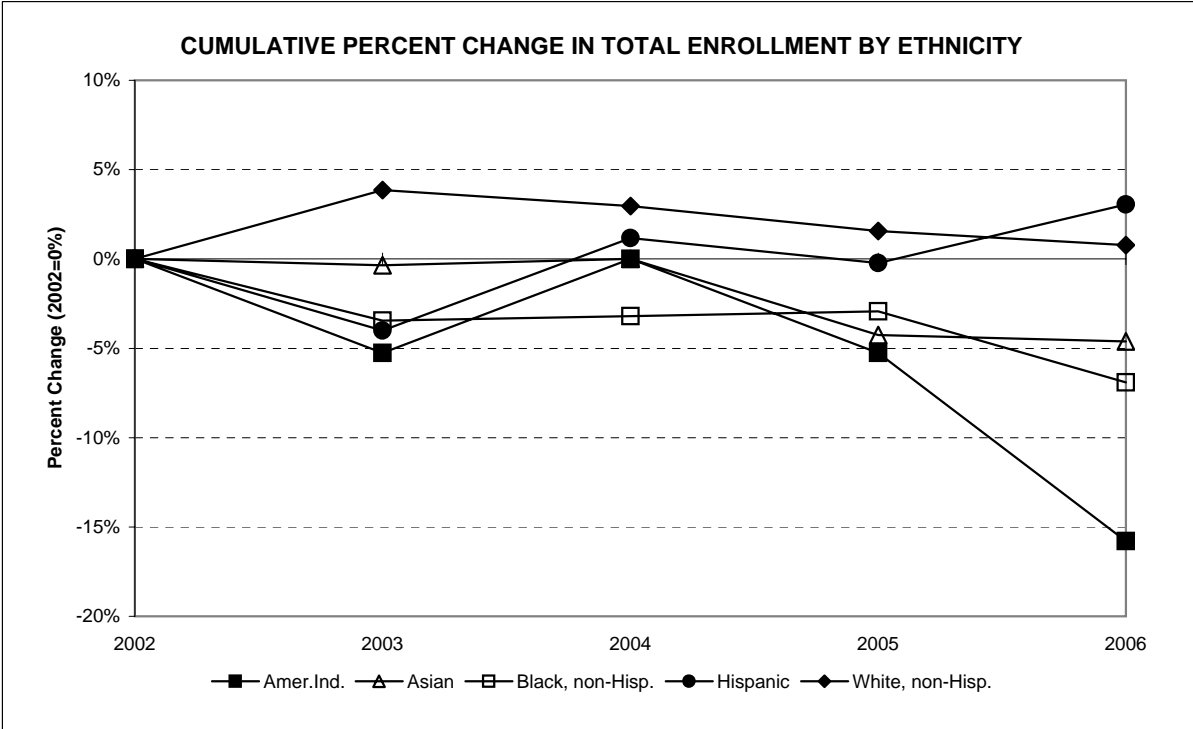
**ENROLLMENT BY STATE OF ORIGIN, FALL 2002 TO FALL 2006**

Undergraduate Students	Fall 2002		Fall 2003		Fall 2004		Fall 2005		Fall 2006		Pct. Change 02 to 06	Pct. Change 05 to 06
	No.	Pct.	No.	Pct.	No.	Pct.	No.	Pct.	No.	Pct.		
New Jersey	4,380	85.2%	4,536	86.5%	4,625	87.6%	4,668	89.2%	4,781	92.2%	9.2%	2.4%
New York	517	10.1%	472	9.0%	420	8.0%	350	6.7%	312	6.0%	-39.7%	-10.9%
Other U.S. State/Terr.	44	0.9%	56	1.1%	55	1.0%	53	1.0%	41	0.8%	-6.8%	-22.6%
Foreign Country	202	3.9%	178	3.4%	178	3.4%	162	3.1%	54	1.0%	-73.3%	-66.7%
<b>Total</b>	<b>5,143</b>		<b>5,242</b>		<b>5,278</b>		<b>5,233</b>		<b>5,188</b>		<b>0.9%</b>	<b>-0.9%</b>

Graduate Students	Fall 2002		Fall 2003		Fall 2004		Fall 2005		Fall 2006		Pct. Change 02 to 06	Pct. Change 05 to 06
	No.	Pct.	No.	Pct.	No.	Pct.	No.	Pct.	No.	Pct.		
New Jersey	305	86.9%	348	89.5%	315	92.9%	282	92.5%	288	92.6%	-5.6%	2.1%
New York	32	9.1%	24	6.2%	16	4.7%	15	4.9%	20	6.4%	-37.5%	33.3%
Other U.S. State/Terr.	0	0.0%	1	0.3%	0	0.0%	2	0.7%	3	1.0%	N/A	50.0%
Foreign Country	14	4.0%	16	4.1%	8	2.4%	6	2.0%	0	0.0%	-100.0%	-100.0%
<b>Total</b>	<b>351</b>		<b>389</b>		<b>339</b>		<b>305</b>		<b>311</b>		<b>-11.4%</b>	<b>2.0%</b>

All Students	Fall 2002		Fall 2003		Fall 2004		Fall 2005		Fall 2006		Pct. Change 02 to 06	Pct. Change 05 to 06
	No.	Pct.	No.	Pct.	No.	Pct.	No.	Pct.	No.	Pct.		
New Jersey	4,685	85.3%	4,884	86.7%	4,940	87.9%	4,950	89.4%	5,069	92.2%	8.2%	2.4%
New York	549	10.0%	496	8.8%	436	7.8%	365	6.6%	332	6.0%	-39.5%	-9.0%
Other U.S. State/Terr.	44	0.8%	57	1.0%	55	1.0%	55	1.0%	44	0.8%	0.0%	-20.0%
Foreign Country	216	3.9%	194	3.4%	186	3.3%	168	3.0%	54	1.0%	-75.0%	-67.9%
<b>Total</b>	<b>5,494</b>		<b>5,631</b>		<b>5,617</b>		<b>5,538</b>		<b>5,499</b>		<b>0.1%</b>	<b>-0.7%</b>





**ENROLLMENT BY ETHNICITY AND CITIZENSHIP, FALL 2002 TO FALL 2006**

Undergraduate Students	Fall 2002		Fall 2003		Fall 2004		Fall 2005		Fall 2006		Pct. Change 02 to 06	Pct. Change 05 to 06
	No.	Pct.	No.	Pct.	No.	Pct.	No.	Pct.	No.	Pct.		
American Indian/Nat. Al.	19	0.4%	18	0.3%	18	0.3%	18	0.3%	16	0.3%	-15.8%	-11.1%
Asian/Pacific Islander	196	3.8%	200	3.8%	214	4.1%	219	4.2%	219	4.2%	11.7%	0.0%
Black, non-Hispanic	329	6.4%	328	6.3%	320	6.1%	326	6.2%	307	5.9%	-6.7%	-5.8%
Hispanic	406	7.9%	388	7.4%	408	7.7%	408	7.8%	419	8.1%	3.2%	2.7%
White, non-Hispanic	3,973	77.3%	4,111	78.4%	4,118	78.0%	4,104	78.4%	4,061	78.3%	2.2%	-1.0%
Nonresident Alien	220	4.3%	197	3.8%	200	3.8%	158	3.0%	166	3.2%	-24.5%	5.1%
Missing	0	N/A	0	N/A	0	N/A	0	N/A	0	N/A	N/A	N/A
<b>Total</b>	<b>5,143</b>		<b>5,242</b>		<b>5,278</b>		<b>5,233</b>		<b>5,188</b>		<b>0.9%</b>	<b>-0.9%</b>

Graduate Students	Fall 2002		Fall 2003		Fall 2004		Fall 2005		Fall 2006		Pct. Change 02 to 06	Pct. Change 05 to 06
	No.	Pct.	No.	Pct.	No.	Pct.	No.	Pct.	No.	Pct.		
American Indian/Nat. Al.	0	0.0%	0	0.0%	1	0.3%	0	0.0%	0	0.0%	N/A	N/A
Asian/Pacific Islander	12	3.4%	9	2.3%	3	0.9%	8	2.6%	11	3.5%	-8.3%	37.5%
Black, non-Hispanic	14	4.0%	7	1.8%	15	4.4%	10	3.3%	18	5.8%	28.6%	80.0%
Hispanic	6	1.7%	13	3.3%	12	3.5%	7	2.3%	7	2.3%	16.7%	0.0%
White, non-Hispanic	305	86.9%	344	88.4%	302	89.1%	276	90.5%	271	87.1%	-11.1%	-1.8%
Nonresident Alien	14	4.0%	16	4.1%	6	1.8%	4	1.3%	4	1.3%	-71.4%	0.0%
Missing	0	N/A	0	N/A	0	N/A	0	N/A	0	N/A	N/A	N/A
<b>Total</b>	<b>351</b>		<b>389</b>		<b>339</b>		<b>305</b>		<b>311</b>		<b>-11.4%</b>	<b>2.0%</b>

All Students	Fall 2002		Fall 2003		Fall 2004		Fall 2005		Fall 2006		Pct. Change 02 to 06	Pct. Change 05 to 06
	No.	Pct.	No.	Pct.	No.	Pct.	No.	Pct.	No.	Pct.		
American Indian/Nat. Al.	19	0.3%	18	0.3%	19	0.3%	18	0.3%	16	0.3%	-15.8%	-11.1%
Asian/Pacific Islander	208	3.8%	209	3.7%	217	3.9%	227	4.1%	230	4.2%	10.6%	1.3%
Black, non-Hispanic	343	6.2%	335	5.9%	335	6.0%	336	6.1%	325	5.9%	-5.2%	-3.3%
Hispanic	412	7.5%	401	7.1%	420	7.5%	415	7.5%	426	7.7%	3.4%	2.7%
White, non-Hispanic	4,278	77.9%	4,455	79.1%	4,420	78.7%	4,380	79.1%	4,332	78.8%	1.3%	-1.1%
Nonresident Alien	234	4.3%	213	3.8%	206	3.7%	162	2.9%	170	3.1%	-27.4%	4.9%
Missing	0	N/A	0	N/A	0	N/A	0	N/A	0	N/A	N/A	N/A
<b>Total</b>	<b>5,494</b>		<b>5,631</b>		<b>5,617</b>		<b>5,538</b>		<b>5,499</b>		<b>0.1%</b>	<b>-0.7%</b>

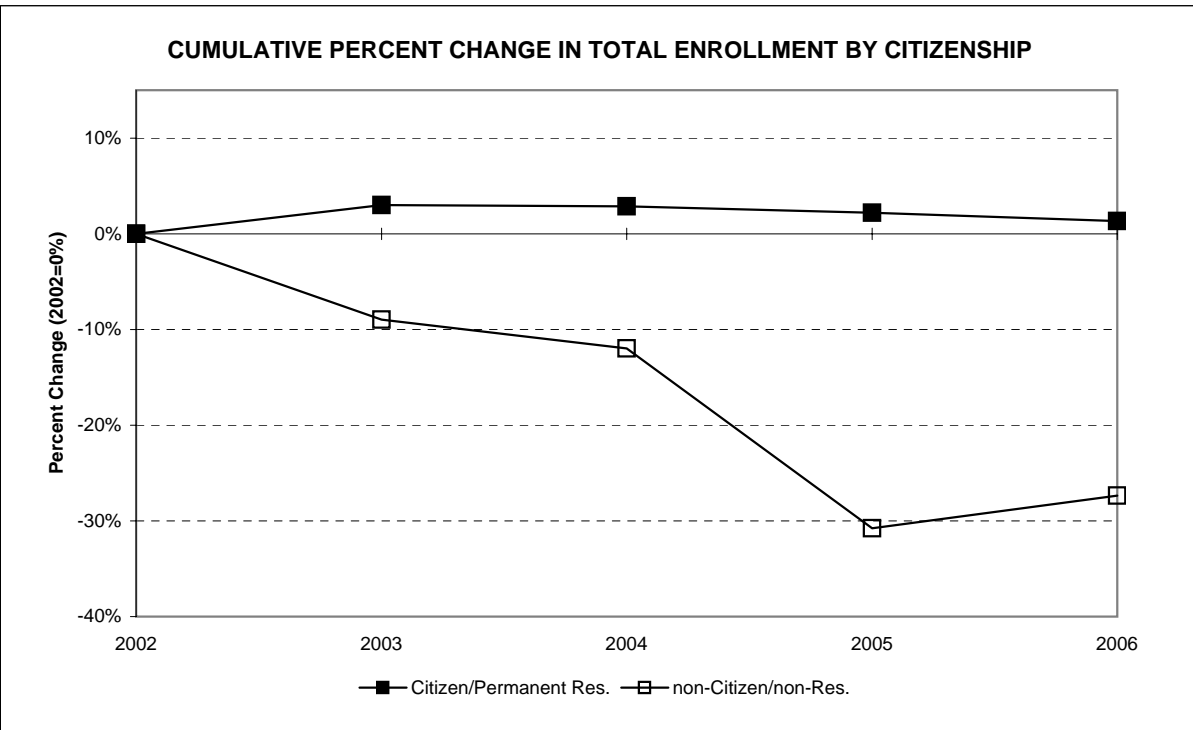
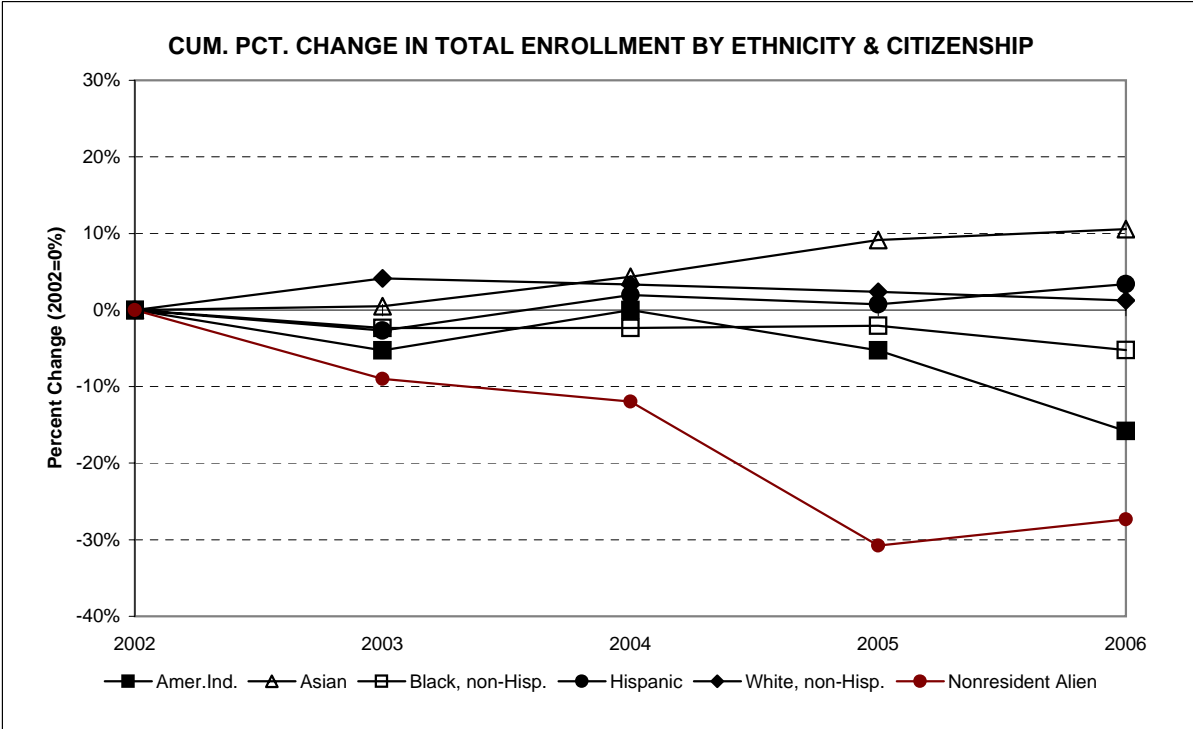


**ENROLLMENT BY CITIZENSHIP, FALL 2002 TO FALL 2006**

Undergraduate Students	Fall 2002		Fall 2003		Fall 2004		Fall 2005		Fall 2006		Pct. Change 02 to 06	Pct. Change 05 to 06
	No.	Pct.	No.	Pct.	No.	Pct.	No.	Pct.	No.	Pct.		
Citizen/Permanent Res.	4,923	95.7%	5,045	96.2%	5,078	96.2%	5,075	97.0%	5,022	96.8%	2.0%	-1.0%
non-Citizen/non-Res.	220	4.3%	197	3.8%	200	3.8%	158	3.0%	166	3.2%	-24.5%	5.1%
<b>Total</b>	<b>5,143</b>		<b>5,242</b>		<b>5,278</b>		<b>5,233</b>		<b>5,188</b>		<b>0.9%</b>	<b>-0.9%</b>

Graduate Students	Fall 2002		Fall 2003		Fall 2004		Fall 2005		Fall 2006		Pct. Change 02 to 06	Pct. Change 05 to 06
	No.	Pct.	No.	Pct.	No.	Pct.	No.	Pct.	No.	Pct.		
Citizen/Permanent Res.	337	96.0%	373	95.9%	333	98.2%	301	98.7%	307	98.7%	-8.9%	2.0%
non-Citizen/non-Res.	14	4.0%	16	4.1%	6	1.8%	4	1.3%	4	1.3%	-71.4%	0.0%
<b>Total</b>	<b>351</b>		<b>389</b>		<b>339</b>		<b>305</b>		<b>311</b>		<b>-11.4%</b>	<b>2.0%</b>

All Students	Fall 2002		Fall 2003		Fall 2004		Fall 2005		Fall 2006		Pct. Change 02 to 06	Pct. Change 05 to 06
	No.	Pct.	No.	Pct.	No.	Pct.	No.	Pct.	No.	Pct.		
Citizen/Permanent Res.	5,260	95.7%	5,418	96.2%	5,411	96.3%	5,376	97.1%	5,329	96.9%	1.3%	-0.9%
non-Citizen/non-Res.	234	4.3%	213	3.8%	206	3.7%	162	2.9%	170	3.1%	-27.4%	4.9%
<b>Total</b>	<b>5,494</b>		<b>5,631</b>		<b>5,617</b>		<b>5,538</b>		<b>5,499</b>		<b>0.1%</b>	<b>-0.7%</b>



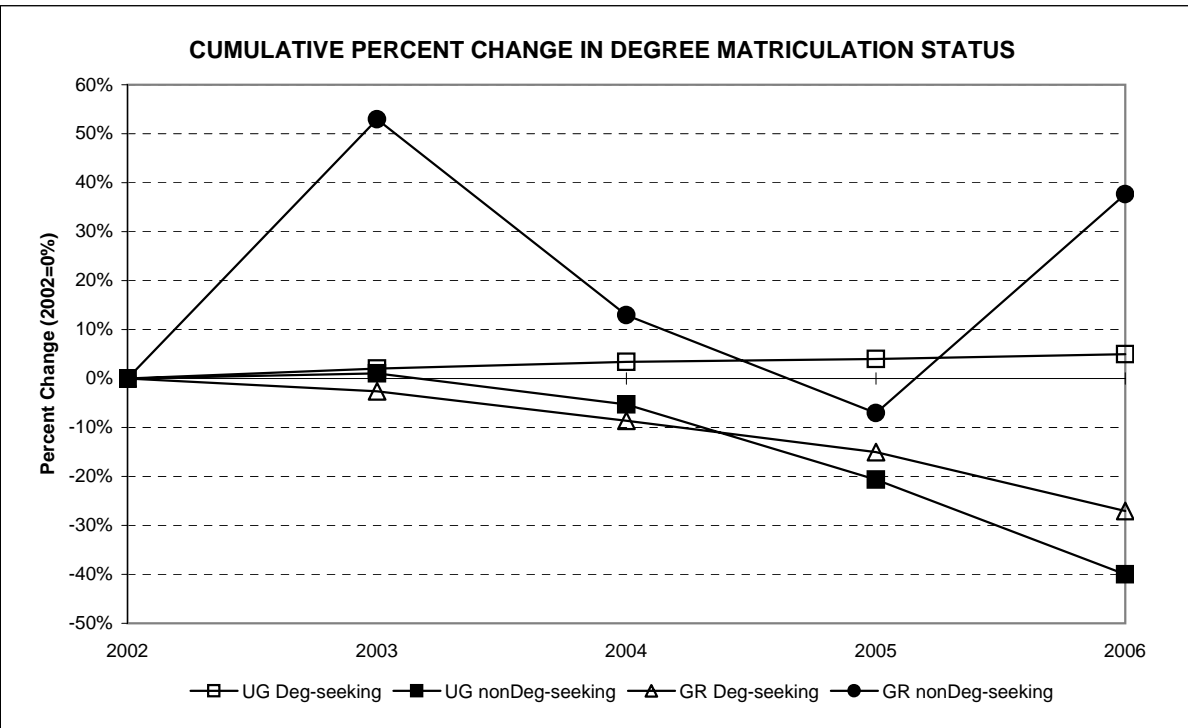
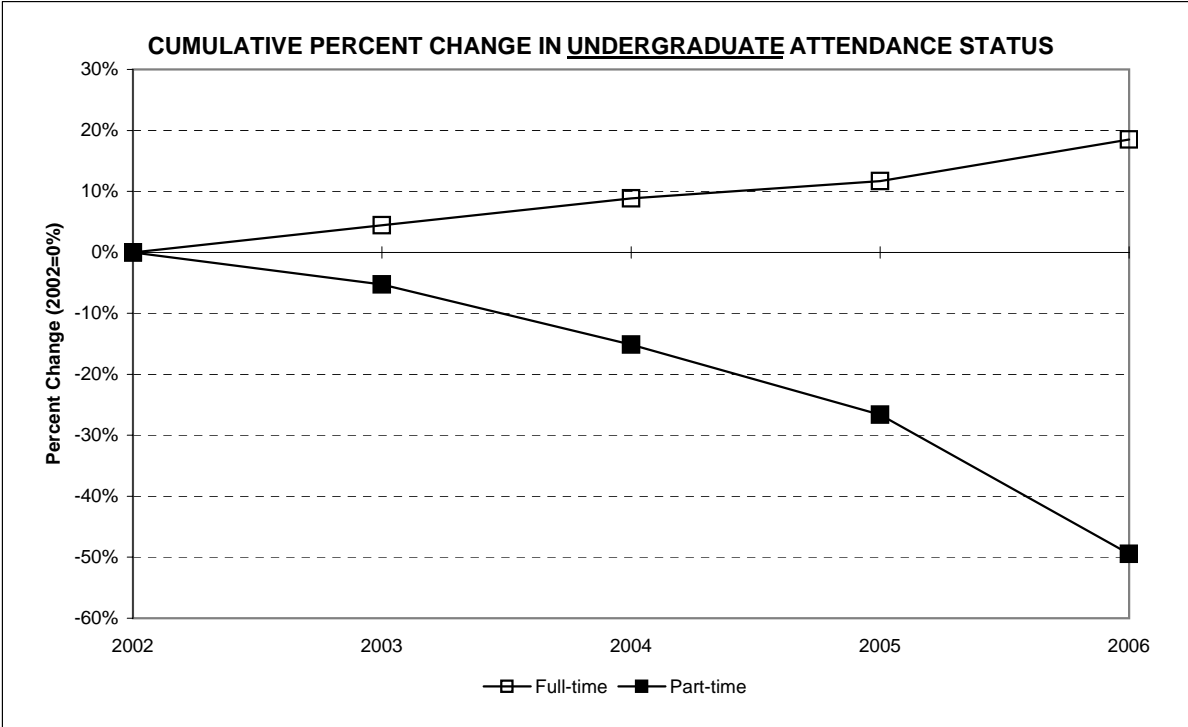
**ENROLLMENT BY ATTENDANCE STATUS, FALL 2002 TO FALL 2006**

	Fall 2002		Fall 2003		Fall 2004		Fall 2005		Fall 2006		Pct. Change 02 to 06	Pct. Change 05 to 06
	No.	Pct.	No.	Pct.	No.	Pct.	No.	Pct.	No.	Pct.		
<b>Undergraduate Students</b>												
Full-time	3,809	74.1%	3,978	75.9%	4,146	78.6%	4,254	81.3%	4,514	87.0%	18.5%	6.1%
Part-time	1,334	25.9%	1,264	24.1%	1,132	21.4%	979	18.7%	674	13.0%	-49.5%	-31.2%
<b>Total</b>	<b>5,143</b>		<b>5,242</b>		<b>5,278</b>		<b>5,233</b>		<b>5,188</b>		<b>0.9%</b>	<b>-0.9%</b>
<b>Graduate Students</b>												
Full-time	21	6.0%	19	4.9%	16	4.7%	13	4.3%	5	1.6%	-76.2%	-61.5%
Part-time	330	94.0%	370	95.1%	323	95.3%	292	95.7%	306	98.4%	-7.3%	4.8%
<b>Total</b>	<b>351</b>		<b>389</b>		<b>339</b>		<b>305</b>		<b>311</b>		<b>-11.4%</b>	<b>2.0%</b>
<b>All Students</b>												
Full-time	3,830	69.7%	3,997	71.0%	4,162	74.1%	4,267	77.0%	4,519	82.2%	18.0%	5.9%
Part-time	1,664	30.3%	1,634	29.0%	1,455	25.9%	1,271	23.0%	980	17.8%	-41.1%	-22.9%
<b>Total</b>	<b>5,494</b>		<b>5,631</b>		<b>5,617</b>		<b>5,538</b>		<b>5,499</b>		<b>0.1%</b>	<b>-0.7%</b>



**ENROLLMENT BY MATRICULATION STATUS, FALL 2002 TO FALL 2006**

	Fall 2002		Fall 2003		Fall 2004		Fall 2005		Fall 2006		Pct. Change 02 to 06	Pct. Change 05 to 06
	No.	Pct.	No.	Pct.	No.	Pct.	No.	Pct.	No.	Pct.		
<b>Undergraduate Students</b>												
Degree-seeking	4,673	90.9%	4,767	90.9%	4,833	91.6%	4,860	92.9%	4,906	94.6%	5.0%	0.9%
Nondegree-seeking	470	9.1%	475	9.1%	445	8.4%	373	7.1%	282	5.4%	-40.0%	-24.4%
<b>Total</b>	<b>5,143</b>		<b>5,242</b>		<b>5,278</b>		<b>5,233</b>		<b>5,188</b>		<b>0.9%</b>	<b>-0.9%</b>
<b>Graduate Students</b>												
Degree-seeking	266	75.8%	259	66.6%	243	71.7%	226	74.1%	194	62.4%	-27.1%	-14.2%
Nondegree-seeking	85	24.2%	130	33.4%	96	28.3%	79	25.9%	117	37.6%	37.6%	48.1%
<b>Total</b>	<b>351</b>		<b>389</b>		<b>339</b>		<b>305</b>		<b>311</b>		<b>-11.4%</b>	<b>2.0%</b>
<b>All Students</b>												
Degree-seeking	4,939	89.9%	5,026	89.3%	5,076	90.4%	5,086	91.8%	5,100	92.7%	3.3%	0.3%
Nondegree-seeking	555	10.1%	605	10.7%	541	9.6%	452	8.2%	399	7.3%	-28.1%	-11.7%
<b>Total</b>	<b>5,494</b>		<b>5,631</b>		<b>5,617</b>		<b>5,538</b>		<b>5,499</b>		<b>0.1%</b>	<b>-0.7%</b>



**ENROLLMENT BY VETERAN STATUS, FALL 2002 TO FALL 2006**

All Students	Fall 2002		Fall 2003		Fall 2004		Fall 2005		Fall 2006		Pct. Change 02 to 06	Pct. Change 05 to 06
	No.	Pct.	No.	Pct.	No.	Pct.	No.	Pct.	No.	Pct.		
Veteran	37	0.7%	36	0.6%	29	0.5%	29	0.5%	11	0.2%	-70.3%	-62.1%
Depend of Dec'd. Vet.	3	0.1%	3	0.1%	1	0.0%	1	0.0%	0	0.0%	-100.0%	-100.0%
Non-Veteran	5,454	99.3%	5,592	99.3%	5,587	99.5%	5,508	99.5%	5,488	99.8%	0.6%	-0.4%
<b>Total</b>	<b>5,494</b>		<b>5,631</b>		<b>5,617</b>		<b>5,538</b>		<b>5,499</b>		<b>0.1%</b>	<b>-0.7%</b>

**ENROLLMENT BY DISABILITY STATUS, FALL 2002 TO FALL 2006**

All Students	Fall 2002		Fall 2003		Fall 2004		Fall 2005		Fall 2006		Pct. Change 02 to 06	Pct. Change 05 to 06
	No.	Pct.	No.	Pct.	No.	Pct.	No.	Pct.	No.	Pct.		
Disabled	202	3.7%	200	3.6%	198	3.5%	184	3.3%	198	3.6%	-2.0%	7.6%
Not Disabled	5,292	96.3%	5,431	96.4%	5,419	96.5%	5,354	96.7%	5,301	96.4%	0.2%	-1.0%
Missing	0	N/A	0	N/A	0	N/A	0	N/A	0	N/A	N/A	N/A
<b>Total</b>	<b>5,494</b>		<b>5,631</b>		<b>5,617</b>		<b>5,538</b>		<b>5,499</b>		<b>0.1%</b>	<b>-0.7%</b>

**UNDERGRADUATE ENROLLMENT BY CLASS RANK, FALL 2002 TO FALL 2006**

Undergraduate Students	Fall 2002		Fall 2003		Fall 2004		Fall 2005		Fall 2006		Pct. Change 02 to 06	Pct. Change 05 to 06
	No.	Pct.	No.	Pct.	No.	Pct.	No.	Pct.	No.	Pct.		
Freshmen	1,067	22.8%	1,026	21.5%	1,031	21.3%	1,014	20.9%	1,263	25.7%	18.4%	24.6%
Sophomores	929	19.9%	973	20.4%	963	19.9%	967	19.9%	1,137	23.2%	22.4%	17.6%
Juniors	1,173	25.1%	1,200	25.2%	1,227	25.4%	1,223	25.2%	1,351	27.5%	15.2%	10.5%
Seniors	1,504	32.2%	1,568	32.9%	1,612	33.4%	1,656	34.1%	1,155	23.5%	-23.2%	-30.3%
Unclassified/nonDeg.	470	N/A	475	N/A	445	N/A	373	N/A	282	N/A	N/A	N/A
<b>Total</b>	<b>5,143</b>		<b>5,242</b>		<b>5,278</b>		<b>5,233</b>		<b>5,188</b>		<b>0.9%</b>	<b>-0.9%</b>

**UNDERGRADUATE ENROLLMENT BY SPECIAL PROGRAM STATUS, FALL 2002 TO FALL 2006**

Undergraduate Students	Fall 2002		Fall 2003		Fall 2004		Fall 2005		Fall 2006		Pct. Change 02 to 06	Pct. Change 05 to 06
	No.	Pct.	No.	Pct.	No.	Pct.	No.	Pct.	No.	Pct.		
EOF	293	5.7%	299	5.7%	303	5.7%	293	5.6%	307	5.9%	4.8%	4.8%
EOF Honor's Program	4	0.1%	2	0.0%	2	0.0%	0	0.0%	0	0.0%	-100.0%	#DIV/0!
Honor's Program	29	0.6%	32	0.6%	54	1.0%	50	1.0%	98	1.9%	237.9%	96.0%
No Spec. Prog. Desig.	4,817	93.7%	4,909	93.6%	4,919	93.2%	4,890	93.4%	4,783	92.2%	-0.7%	-2.2%
<b>Total</b>	<b>5,143</b>		<b>5,242</b>		<b>5,278</b>		<b>5,233</b>		<b>5,188</b>		<b>0.9%</b>	<b>-0.9%</b>

TOTAL FALL 2006 ENROLLMENT = 5,499

All Students	Fall 2002		Fall 2003		Fall 2004		Fall 2005		Fall 2006		Pct. Change	Pct. Change
	No.	Pct.	No.	Pct.	No.	Pct.	No.	Pct.	No.	Pct.	02 to 06	05 to 06
Atlantic	16	0.3%	19	0.3%	19	0.3%	16	0.3%	14	0.3%	-12.5%	-12.5%
Bergen	2,059	37.5%	2,056	36.5%	2,001	35.6%	1,904	34.4%	1,927	35.0%	-6.4%	1.2%
Burlington	35	0.6%	36	0.6%	45	0.8%	43	0.8%	47	0.9%	34.3%	9.3%
Camden	40	0.7%	43	0.8%	42	0.7%	44	0.8%	50	0.9%	25.0%	13.6%
Cape May	11	0.2%	14	0.2%	9	0.2%	9	0.2%	9	0.2%	-18.2%	0.0%
Cumberland	4	0.1%	3	0.1%	7	0.1%	9	0.2%	11	0.2%	175.0%	22.2%
Essex	173	3.1%	172	3.1%	164	2.9%	161	2.9%	187	3.4%	8.1%	16.1%
Gloucester	32	0.6%	29	0.5%	37	0.7%	35	0.6%	26	0.5%	-18.8%	-25.7%
Hudson	133	2.4%	133	2.4%	130	2.3%	133	2.4%	136	2.5%	2.3%	2.3%
Hunterdon	34	0.6%	57	1.0%	66	1.2%	65	1.2%	54	1.0%	58.8%	-16.9%
Mercer	29	0.5%	26	0.5%	40	0.7%	43	0.8%	52	0.9%	79.3%	20.9%
Middlesex	313	5.7%	380	6.7%	402	7.2%	418	7.5%	452	8.2%	44.4%	8.1%
Monmouth	233	4.2%	275	4.9%	305	5.4%	358	6.5%	390	7.1%	67.4%	8.9%
Morris	298	5.4%	288	5.1%	293	5.2%	302	5.5%	319	5.8%	7.0%	5.6%
Ocean	219	4.0%	265	4.7%	260	4.6%	267	4.8%	253	4.6%	15.5%	-5.2%
Passaic	634	11.5%	641	11.4%	625	11.1%	603	10.9%	589	10.7%	-7.1%	-2.3%
Salem	5	0.1%	5	0.1%	2	0.0%	1	0.0%	2	0.0%	-60.0%	100.0%
Somerset	69	1.3%	84	1.5%	87	1.5%	99	1.8%	92	1.7%	33.3%	-7.1%
Sussex	177	3.2%	169	3.0%	213	3.8%	233	4.2%	257	4.7%	45.2%	10.3%
Union	125	2.3%	129	2.3%	124	2.2%	133	2.4%	131	2.4%	4.8%	-1.5%
Warren	41	0.7%	58	1.0%	65	1.2%	73	1.3%	71	1.3%	73.2%	-2.7%
Orange, NY	93	1.7%	92	1.6%	85	1.5%	60	1.1%	91	1.7%	-2.2%	51.7%
Rockland, NY	352	6.4%	321	5.7%	282	5.0%	239	4.3%	189	3.4%	-46.3%	-20.9%
Westchester, NY	4	0.1%	4	0.1%	4	0.1%	7	0.1%	13	0.2%	225.0%	85.7%
Out of State/Other	365	6.6%	332	5.9%	310	5.5%	283	5.1%	137	2.5%	-62.5%	-51.6%
Total	5,494		5,631		5,617		5,538		5,499		0.1%	-0.7%

Non-Citizen Enrollment by Country of Origin, Fall 2002 to Fall 2006

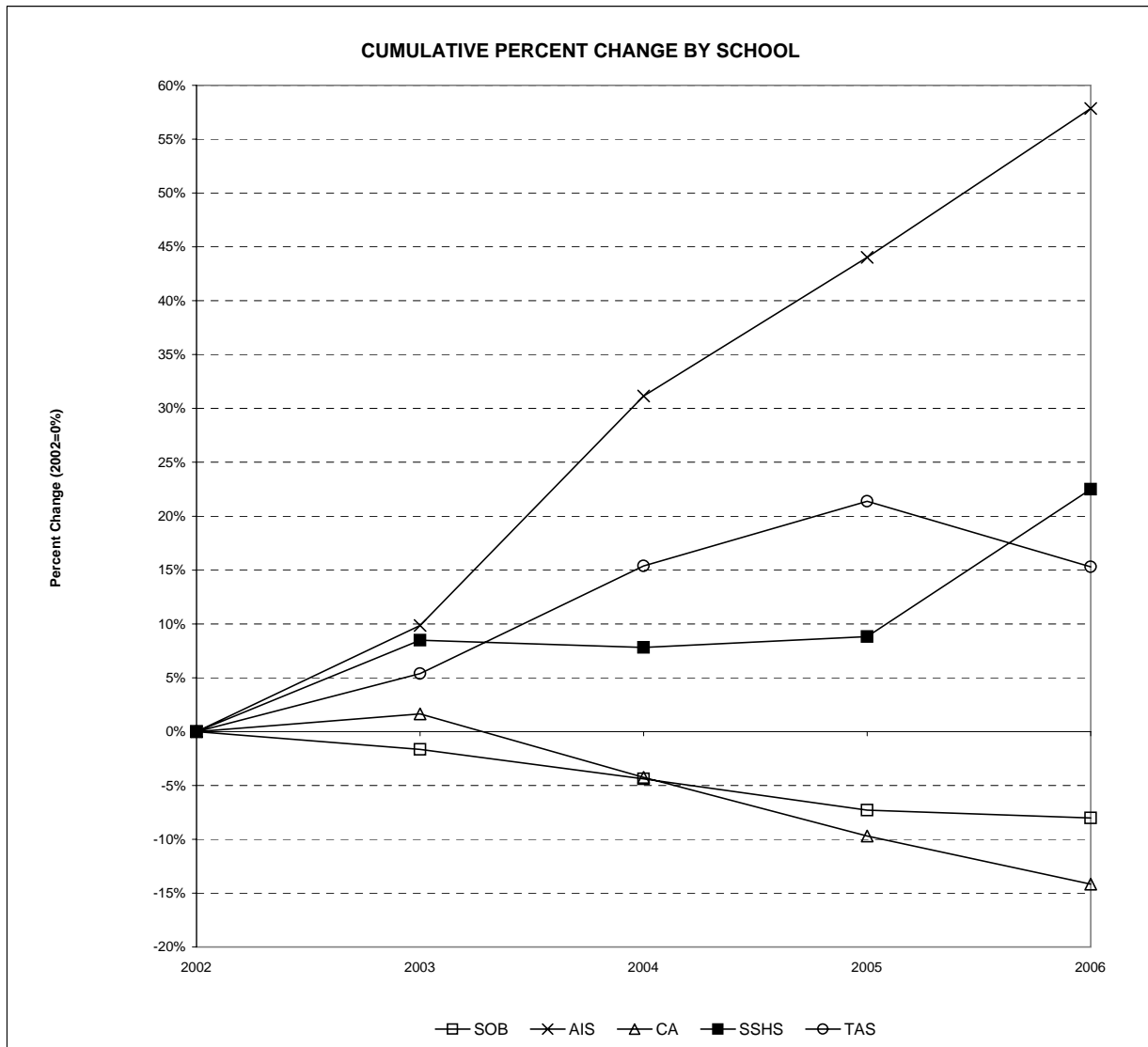
Country	Fall 2002		Fall 2003		Fall 2004		Fall 2005		Fall 2006		Country	Fall 2002		Fall 2003		Fall 2004		Fall 2005		Fall 2006										
	No.	Pct.	No.	Pct.	No.	Pct.	No.	Pct.	No.	Pct.		No.	Pct.	No.	Pct.	No.	Pct.	No.	Pct.	No.	Pct.									
Albania	2	0.9%	1	0.5%	2	1.0%	1	0.6%			Ivory Coast	1	0.4%	1	0.5%															
Argentina	3	1.3%			2	1.0%	2	1.2%	2	1.2%	Jamaica	3	1.3%	2	0.9%	1	0.5%	3	1.9%	3	1.8%									
Austria	2	0.9%			2	1.0%					Japan	7	3.0%	11	5.2%	9	4.4%	7	4.3%	8	4.7%									
Bahamas	1	0.4%	4	1.9%	6	2.9%	7	4.3%	6	3.5%	Kampuchea							1	0.6%											
Bahrain									2	1.2%	Kenya	16	6.8%	8	3.8%	5	2.4%	3	1.9%	3	1.8%									
Bangladesh	2	0.9%	2	0.9%					1	0.6%	Liberia	1	0.4%	1	0.5%															
Bolivia			1	0.5%							Lithuania	3	1.3%	1	0.5%															
Bosnia-Herzegovina	1	0.4%	1	0.5%	1	0.5%					(FYRO) Macedonia	6	2.6%	4	1.9%	1	0.5%	1	0.6%											
Brazil	4	1.7%	2	0.9%	2	1.0%	6	3.7%	5	2.9%	Malaysia	1	0.4%	4	1.9%	2	1.0%	2	1.2%											
British Virgin Islands	1	0.4%	1	0.5%	1	0.5%					Mauritius	1	0.4%	1	0.5%	2	1.0%	2	1.2%	1	0.6%									
Bulgaria	22	9.4%	30	14.1%	35	17.0%	30	18.5%	38	22.4%	Mexico	1	0.4%	1	0.5%	4	1.9%													
Burma			1	0.5%							Moldova									1	0.6%									
Cambodia					1	0.5%			1	0.6%	Mongolia	2	0.9%	2	0.9%	2	1.0%	2	1.2%	1	0.6%									
Canada	3	1.3%	4	1.9%	3	1.5%	2	1.2%	2	1.2%	Morocco	2	0.9%	1	0.5%	1	0.5%			1	0.6%									
Chile	2	0.9%									Nepal	2	0.9%	3	1.4%	1	0.5%	2	1.2%	1	0.6%									
Taiwan (China, Nationalist)	5	2.1%	4	1.9%	2	1.0%	1	0.6%			Netherlands			1	0.5%	1	0.5%			1	0.6%									
China, People's Republic	5	2.1%	4	1.9%	4	1.9%	1	0.6%	1	0.6%	Nigeria	2	0.9%	3	1.4%	6	2.9%	6	3.7%	4	2.4%									
Colombia	1	0.4%	2	0.9%	1	0.5%	1	0.6%	1	0.6%	Norway			1	0.5%															
Costa Rica	1	0.4%							1	0.6%	Pakistan	13	5.6%	7	3.3%	9	4.4%	5	3.1%	3	1.8%									
Croatia	1	0.4%			1	0.5%	2	1.2%	2	1.2%	Panama	1	0.4%	1	0.5%			2	1.2%	1	0.6%									
Cyprus			1	0.5%							Peru	1	0.4%	1	0.5%	2	1.0%	2	1.2%	2	1.2%									
Czech Republic	2	0.9%	1	0.5%	2	1.0%					Philippines	1	0.4%	3	1.4%	2	1.0%	1	0.6%	2	1.2%									
Denmark	1	0.4%					1	0.6%			Poland	10	4.3%	8	3.8%	10	4.9%	7	4.3%	9	5.3%									
Dominican Republic					2	1.0%	1	0.6%			Portugal	1	0.4%	1	0.5%	1	0.5%	1	0.6%											
Ecuador	1	0.4%					1	0.6%	1	0.6%	Romania					1	0.5%	2	1.2%	2	1.2%									
Egypt	3	1.3%	2	0.9%	2	1.0%	1	0.6%			Russia	3	1.3%	4	1.9%	3	1.5%	3	1.9%	7	4.1%									
El Salvador									1	0.6%	St. Vincent/Gren.	1	0.4%	1	0.5%	1	0.5%			1	0.6%									
Estonia	2	0.9%	3	1.4%	2	1.0%	1	0.6%	1	0.6%	Slovak Republic			1	0.5%	1	0.5%	1	0.6%	1	0.6%									
Ethiopia			2	0.9%	1	0.5%	1	0.6%	2	1.2%	South Africa	8	3.4%	6	2.8%	3	1.5%	1	0.6%	2	1.2%									
Fiji	1	0.4%									South Korea	18	7.7%	15	7.0%	14	6.8%	6	3.7%	11	6.5%									
France	4	1.7%	2	0.9%	3	1.5%	2	1.2%	2	1.2%	Spain	1	0.4%					1	0.6%	2	1.2%									
Germany	11	4.7%	12	5.6%	6	2.9%	6	3.7%	11	6.5%	Sri Lanka	3	1.3%	2	0.9%	2	1.0%	1	0.6%	1	0.6%									
Ghana	1	0.4%	1	0.5%	1	0.5%	2	1.2%			Sweden	1	0.4%	3	1.4%	2	1.0%	2	1.2%	1	0.6%									
Greece	1	0.4%									Switzerland	2	0.9%	2	0.9%	2	1.0%	1	0.6%											
Guyana					1	0.5%	1	0.6%			Tanzania	1	0.4%	2	0.9%	3	1.5%	2	1.2%	1	0.6%									
Haiti	1	0.4%			1	0.5%					Trinidad & Tobago	2	0.9%	1	0.5%	4	1.9%	6	3.7%	7	4.1%									
Hong Kong			1	0.5%	1	0.5%	1	0.6%			Turkey	6	2.6%	4	1.9%	2	1.0%	1	0.6%											
Hungary	1	0.4%	1	0.5%	2	1.0%	2	1.2%			Uganda							1	0.6%	1	0.6%									
Iceland			1	0.5%							Ukraine	3	1.3%	2	0.9%	3	1.5%	1	0.6%	1	0.6%									
India	10	4.3%	7	3.3%	10	4.9%	7	4.3%	4	2.4%	United Kingdom	1	0.4%	1	0.5%															
Indonesia	1	0.4%	2	0.9%					1		Uzbekistan	1	0.4%																	
Iraq									2		Venezuela	1	0.4%	1	0.5%	1	0.5%													
Israel			1	0.5%			1	0.6%	2	1.2%	Yugoslavia	10	4.3%	7	3.3%	7	3.4%	3	1.9%	2	1.2%									
Italy							1	0.6%			Zambia	1	0.4%	1	0.5%	1	0.5%	1	0.6%											
											<b>TOTAL</b>	234		213		206		162		170										



TOTAL FALL 2006 ENROLLMENT = 5,499

**MATRICULATED UNDERGRADUATE ENROLLMENT BY SCHOOL, FALL 2002 TO FALL 2006**

Schools	Fall 2002		Fall 2003		Fall 2004		Fall 2005		Fall 2006		Percent Change 02 to 06	Percent Change 05 to 06
	No.	Pct.	No.	Pct.	No.	Pct.	No.	Pct.	No.	Pct.		
School of Business	1,208	25.9%	1,188	24.9%	1,155	23.9%	1,120	23.0%	1,111	22.6%	-8.0%	-0.8%
Amer. & Int'l Studies	427	9.1%	469	9.8%	560	11.6%	615	12.7%	674	13.7%	57.8%	9.6%
Contemporary Arts	917	19.6%	932	19.6%	878	18.2%	828	17.0%	787	16.0%	-14.2%	-5.0%
Soc. Sci. & Hum. Serv.	884	18.9%	959	20.1%	953	19.7%	962	19.8%	1,083	22.1%	22.5%	12.6%
Theoretical & App. Sci.	968	20.7%	1,020	21.4%	1,117	23.1%	1,175	24.2%	1,116	22.7%	15.3%	-5.0%
School Undecided	269	5.8%	199	4.2%	170	3.5%	160	3.3%	135	2.8%	-49.8%	-15.6%
<b>Total</b>	<b>4,673</b>		<b>4,767</b>		<b>4,833</b>		<b>4,860</b>		<b>4,906</b>		<b>5.0%</b>	<b>0.9%</b>



TOTAL FALL 2006 ENROLLMENT = 5,499

MATRICULATED UNDERGRADUATE ENROLLMENT BY SCHOOL AND MAJOR, FALL 2002 TO FALL 2006

Majors	Fall 2002		Fall 2003		Fall 2004		Fall 2005		Fall 2006		Percent Change 02 to 06	Percent Change 05 to 06
	No.	Pct.	No.	Pct.	No.	Pct.	No.	Pct.	No.	Pct.		
Accounting	193	4.1%	180	3.8%	202	4.2%	232	4.8%	205	4.2%	6.2%	-11.6%
Business Administration	573	12.3%	581	12.2%	549	11.4%	570	11.7%	575	11.7%	0.3%	0.9%
Economics	37	0.8%	36	0.8%	35	0.7%	25	0.5%	32	0.7%	-13.5%	28.0%
Information Systems	196	4.2%	168	3.5%	138	2.9%	92	1.9%	74	1.5%	-62.2%	-19.6%
International Business	74	1.6%	81	1.7%	89	1.8%	63	1.3%	70	1.4%	-5.4%	11.1%
Undecided Major	135	2.9%	142	3.0%	142	2.9%	138	2.8%	155	3.2%	14.8%	12.3%
American Studies	21	0.4%	16	0.3%	17	0.4%	24	0.5%	33	0.7%	57.1%	37.5%
History	107	2.3%	112	2.3%	129	2.7%	152	3.1%	237	4.8%	121.5%	55.9%
International Studies	28	0.6%	43	0.9%	49	1.0%	44	0.9%	53	1.1%	89.3%	20.5%
Law and Society	44	0.9%	51	1.1%	50	1.0%	46	0.9%	1	0.0%	-97.7%	-97.8%
Literature	158	3.4%	174	3.7%	210	4.3%	205	4.2%	218	4.4%	38.0%	6.3%
Political Science	48	1.0%	48	1.0%	71	1.5%	90	1.9%	72	1.5%	50.0%	-20.0%
Spanish	--	--	--	--	5	0.1%	18	0.4%	24	0.5%	N/A	33.3%
Undecided Major	21	0.4%	25	0.5%	29	0.6%	36	0.7%	36	0.7%	71.4%	0.0%
Communication Arts	575	12.3%	549	11.5%	514	10.6%	485	10.0%	443	9.0%	-23.0%	-8.7%
Contemporary Arts	45	1.0%	54	1.1%	63	1.3%	67	1.4%	86	1.8%	91.1%	28.4%
Music	35	0.7%	48	1.0%	44	0.9%	47	1.0%	62	1.3%	77.1%	31.9%
Theater	78	1.7%	79	1.7%	60	1.2%	52	1.1%	41	0.8%	-47.4%	-21.2%
Visual Arts	74	1.6%	99	2.1%	123	2.5%	109	2.2%	111	2.3%	50.0%	1.8%
Undecided Major	110	2.4%	103	2.2%	74	1.5%	68	1.4%	44	0.9%	-60.0%	-35.3%
Economics <sup>[1]</sup>	9	0.2%	4	0.1%	7	0.1%	3	0.1%	-	-	N/A	N/A
Environmental Studies	7	0.1%	9	0.2%	10	0.2%	10	0.2%	40	0.8%	471.4%	300.0%
History <sup>[1]</sup>	36	0.8%	32	0.7%	43	0.9%	48	1.0%	-	-	N/A	N/A
Law and Society	102	2.2%	140	2.9%	158	3.3%	166	3.4%	213	4.3%	108.8%	28.3%
Political Science	2	0.0%	1	0.0%	0	0.0%	0	0.0%	0	0.0%	-100.0%	N/A
Psychology	432	9.2%	479	10.0%	433	9.0%	413	8.5%	532	10.8%	23.1%	28.8%
Social Science	32	0.7%	26	0.5%	20	0.4%	25	0.5%	19	0.4%	-40.6%	-24.0%
Social Work	102	2.2%	101	2.1%	118	2.4%	114	2.3%	113	2.3%	10.8%	-0.9%
Sociology	55	1.2%	54	1.1%	62	1.3%	62	1.3%	51	1.0%	-7.3%	-17.7%
Undecided Major	107	2.3%	113	2.4%	102	2.1%	121	2.5%	115	2.3%	7.5%	-5.0%
Allied Health	1	0.0%	3	0.1%	9	0.2%	16	0.3%	10	0.2%	900.0%	-37.5%
Biochemistry	17	0.4%	18	0.4%	22	0.5%	25	0.5%	43	0.9%	152.9%	72.0%
Bioinformatics	3	0.1%	11	0.2%	18	0.4%	20	0.4%	19	0.4%	533.3%	-5.0%
Biology	155	3.3%	182	3.8%	208	4.3%	255	5.2%	290	5.9%	87.1%	13.7%
Chemistry	19	0.4%	21	0.4%	21	0.4%	21	0.4%	24	0.5%	26.3%	14.3%
Clinical Lab Sciences	6	0.1%	4	0.1%	6	0.1%	8	0.2%	11	0.2%	83.3%	37.5%
Computer Science	166	3.6%	145	3.0%	118	2.4%	90	1.9%	76	1.5%	-54.2%	-15.6%
Environmental Science	25	0.5%	24	0.5%	21	0.4%	24	0.5%	28	0.6%	12.0%	16.7%
Environmental Studies <sup>[1]</sup>	39	0.8%	32	0.7%	40	0.8%	33	0.7%	-	-	N/A	N/A
Integrated Science	--	--	--	--	3	0.1%	9	0.2%	13	0.3%	N/A	44.4%
Mathematics	56	1.2%	71	1.5%	85	1.8%	100	2.1%	112	2.3%	100.0%	12.0%
Nursing	314	6.7%	339	7.1%	372	7.7%	367	7.6%	388	7.9%	23.6%	5.7%
Physics	12	0.3%	10	0.2%	19	0.4%	24	0.5%	14	0.3%	16.7%	-41.7%
Psychology <sup>[1]</sup>	100	2.1%	97	2.0%	100	2.1%	110	2.3%	-	-	N/A	N/A
Undecided Major	55	1.2%	63	1.3%	75	1.6%	73	1.5%	88	1.8%	60.0%	20.5%
School & Major Undecided	269	5.8%	199	4.2%	170	3.5%	160	3.3%	135	2.8%	-49.8%	-15.6%
Total	4,673		4,767		4,833		4,860		4,906		5.0%	0.9%

[1] The domicile of certain majors changed in Fall 2006. Economics is now exclusively a major in ASB; History is now exclusive to AIS; Environmental Studies is now exclusive to SSHS; and Psychology is now exclusive to SSHS.

TOTAL FALL 2006 ENROLLMENT = 5,499

MATRICULATED UNDERGRADUATE ENROLLMENT BY MAJOR, FALL 2002 TO FALL 2006

Majors	Fall 2002		Fall 2003		Fall 2004		Fall 2005		Fall 2006		Percent Change 02 to 06	Percent Change 05 to 06
	No.	Pct.	No.	Pct.	No.	Pct.	No.	Pct.	No.	Pct.		
Accounting	193	5.0%	180	4.6%	202	5.0%	232	5.7%	205	4.9%	6.2%	-11.6%
Allied Health	1	0.0%	3	0.1%	9	0.2%	16	0.4%	10	0.2%	900.0%	-37.5%
American Studies	21	0.5%	16	0.4%	17	0.4%	24	0.6%	33	0.8%	57.1%	37.5%
Biochemistry	17	0.4%	18	0.5%	22	0.5%	25	0.6%	43	1.0%	152.9%	72.0%
Bioinformatics	3	0.1%	11	0.3%	18	0.4%	20	0.5%	19	0.5%	533.3%	-5.0%
Biology	155	4.1%	182	4.6%	208	5.1%	255	6.2%	290	7.0%	87.1%	13.7%
Business Administration	573	15.0%	581	14.7%	549	13.5%	570	14.0%	575	13.8%	0.3%	0.9%
Chemistry	19	0.5%	21	0.5%	21	0.5%	21	0.5%	24	0.6%	26.3%	14.3%
Clinical Lab Sciences	6	0.2%	4	0.1%	6	0.1%	8	0.2%	11	0.3%	83.3%	37.5%
Communication Arts	575	15.0%	549	13.9%	514	12.7%	485	11.9%	443	10.7%	-23.0%	-8.7%
Computer Science	166	4.3%	145	3.7%	118	2.9%	90	2.2%	76	1.8%	-54.2%	-15.6%
Contemporary Arts	45	1.2%	54	1.4%	63	1.6%	67	1.6%	86	2.1%	91.1%	28.4%
Economics [1]	46	1.2%	40	1.0%	42	1.0%	28	0.7%	32	0.8%	-30.4%	14.3%
Environmental Science	25	0.7%	24	0.6%	21	0.5%	24	0.6%	28	0.7%	12.0%	16.7%
Environmental Studies [2]	46	1.2%	41	1.0%	50	1.2%	43	1.1%	40	1.0%	-13.0%	-7.0%
History [3]	143	3.7%	144	3.7%	172	4.2%	200	4.9%	237	5.7%	65.7%	18.5%
Information Systems	196	5.1%	168	4.3%	138	3.4%	92	2.3%	74	1.8%	-62.2%	-19.6%
Integrated Science	--	--	--	--	3	0.1%	9	0.2%	13	0.3%	N/A	44.4%
International Business	74	1.9%	81	2.1%	89	2.2%	63	1.5%	70	1.7%	-5.4%	11.1%
International Studies	28	0.7%	43	1.1%	49	1.2%	44	1.1%	53	1.3%	89.3%	20.5%
Law and Society [4]	146	3.8%	191	4.8%	208	5.1%	212	5.2%	214	5.1%	46.6%	0.9%
Literature	158	4.1%	174	4.4%	210	5.2%	205	5.0%	218	5.2%	38.0%	6.3%
Mathematics	56	1.5%	71	1.8%	85	2.1%	100	2.4%	112	2.7%	100.0%	12.0%
Music	35	0.9%	48	1.2%	44	1.1%	47	1.2%	62	1.5%	77.1%	31.9%
Nursing	314	8.2%	339	8.6%	372	9.2%	367	9.0%	388	9.3%	23.6%	5.7%
Physics	12	0.3%	10	0.3%	19	0.5%	24	0.6%	14	0.3%	16.7%	-41.7%
Political Science [5]	50	1.3%	49	1.2%	71	1.8%	90	2.2%	72	1.7%	44.0%	-20.0%
Psychology [6]	532	13.9%	576	14.6%	533	13.2%	523	12.8%	532	12.8%	0.0%	1.7%
Social Science	32	0.8%	26	0.7%	20	0.5%	25	0.6%	19	0.5%	-40.6%	-24.0%
Social Work	102	2.7%	101	2.6%	118	2.9%	114	2.8%	113	2.7%	10.8%	-0.9%
Sociology	55	1.4%	54	1.4%	62	1.5%	62	1.5%	51	1.2%	-7.3%	-17.7%
Spanish	--	--	--	--	5	0.1%	18	0.4%	24	0.6%	N/A	33.3%
Theater	78	2.0%	79	2.0%	60	1.5%	52	1.3%	41	1.0%	-47.4%	-21.2%
Visual Arts	74	1.9%	99	2.5%	123	3.0%	109	2.7%	111	2.7%	50.0%	1.8%
Undecided Major	697	N/A	645	N/A	592	N/A	596	N/A	573	N/A	-17.8%	N/A
Total	4,673		4,767		4,833		4,860		4,906		5.0%	0.9%

[1] Prior to fall 2006, includes students from SB and SSHS.

[2] Prior to fall 2006, includes students from SSHS and TAS.

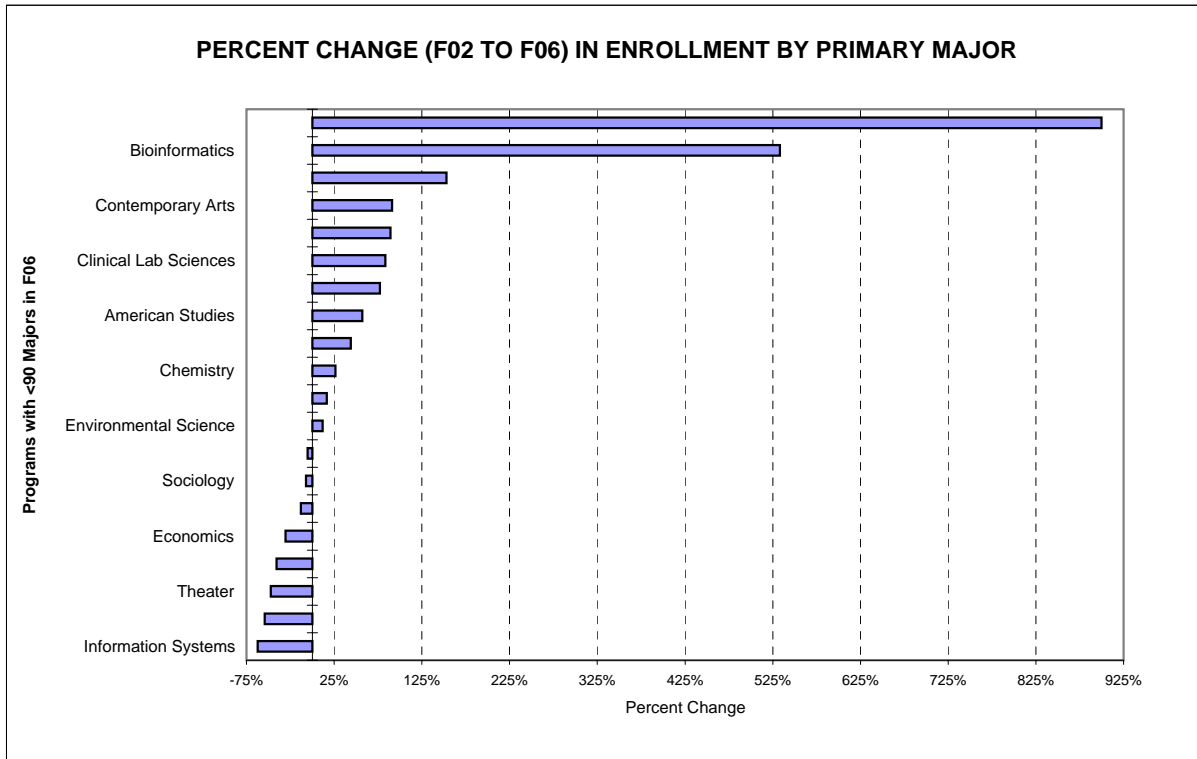
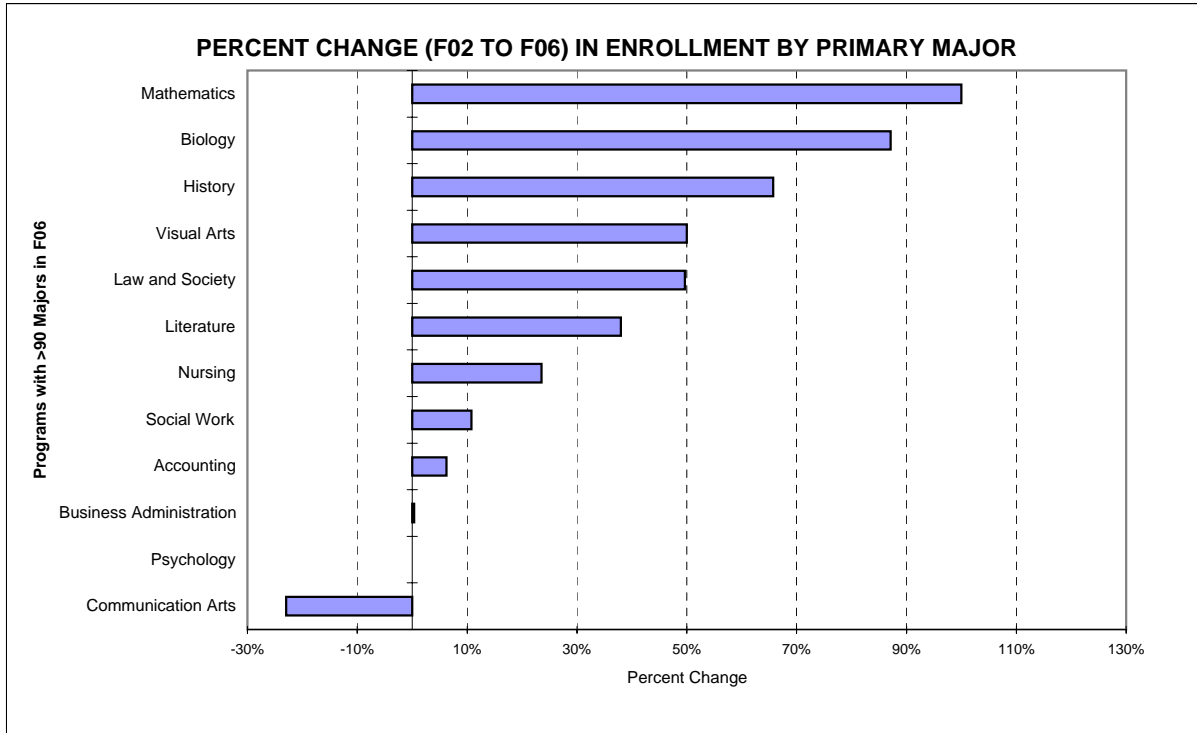
[3] Prior to fall 2006, includes students from AIS and SSHS.

[4] Prior to fall 2006, includes students from AIS and SSHS.

[5] Prior to fall 2006, includes students from AIS and SSHS.

[6] Prior to fall 2006, includes students from SSHS and TAS.

TOTAL FALL 2006 ENROLLMENT = 5,499  
MATRICULATED UNDERGRADUATES



TOTAL FALL 2006 ENROLLMENT = 5,499

Majors and Concentrations	Fall 2002		Fall 2003		Fall 2004		Fall 2005		Fall 2006		Percent Change 02 to 06	Percent Change 05 to 06
	No.	% of Maj	No.	% of Maj	No.	% of Maj	No.	% of Maj	No.	% of Maj		
<b>Biology</b>												
Physician's Assistant	--	--	--	--	33	15.9%	10	3.9%	11	3.8%	N/A	10.0%
Physical Therapy	17	11.0%	24	13.2%	8	3.8%	38	14.9%	52	17.9%	205.9%	36.8%
Chiropractic	--	--	--	--	--	--	--	--	1	0.3%	N/A	N/A
Dental	--	--	--	--	--	--	--	--	6	2.1%	N/A	N/A
Optometry	--	--	--	--	--	--	--	--	1	0.3%	N/A	N/A
Unspecified	138	89.0%	158	86.8%	167	80.3%	207	81.2%	219	75.5%	58.7%	5.8%
Subtotal	155		182		208		255		290		87.1%	13.7%
<b>Business Administration</b>												
Finance	129	83.2%	116	63.7%	100	48.1%	117	45.9%	137	47.2%	6.2%	17.1%
Management	225	145.2%	234	128.6%	224	107.7%	237	92.9%	240	82.8%	6.7%	1.3%
Marketing	184	118.7%	187	102.7%	169	81.3%	154	60.4%	168	57.9%	-8.7%	9.1%
Unspecified	35	22.6%	44	24.2%	56	26.9%	62	24.3%	30	10.3%	-14.3%	-51.6%
Subtotal	573		581		549		570		575		0.3%	0.9%
<b>Communication Arts</b>												
Creative Writing	36	6.3%	16	2.9%	7	1.4%	1	0.2%	33	7.4%	-8.3%	3200.0%
Design & Interactive Media	--	--	--	--	--	--	--	--	53	12.0%	N/A	N/A
Digital Filmmaking	--	--	--	--	--	--	--	--	66	14.9%	N/A	N/A
Graphic Design	111	19.3%	63	11.5%	31	6.0%	7	1.4%	3	0.7%	-97.3%	-57.1%
Interdisciplinary	8	1.4%	5	0.9%	6	1.2%	1	0.2%	1	0.2%	-87.5%	0.0%
Journalism	53	9.2%	31	5.6%	19	3.7%	6	1.2%	59	13.3%	11.3%	883.3%
Media & Cinema Studies	--	--	--	--	--	--	--	--	102	23.0%	N/A	N/A
Public Communication	93	16.2%	67	12.2%	36	7.0%	6	1.2%	--	--	N/A	N/A
Radio	31	5.4%	19	3.5%	7	1.4%	2	0.4%	--	--	N/A	N/A
TV/Video Production	115	20.0%	63	11.5%	33	6.4%	11	2.3%	--	--	N/A	N/A
Unspecified	128	22.3%	285	51.9%	375	73.0%	451	93.0%	126	28.4%	-1.6%	-72.1%
Subtotal	575		549		514		485		443		-23.0%	-8.7%
<b>Music [2]</b>												
Music Industry	--	--	--	--	--	--	--	--	11	2.8%	N/A	N/A
Music Production	--	--	--	--	--	--	--	--	6	1.5%	N/A	N/A
Music Performance	--	--	--	--	--	--	--	--	8	2.1%	N/A	N/A
Music Studies	--	--	--	--	--	--	--	--	8	2.1%	N/A	N/A
Unspecified	--	--	--	--	--	--	--	--	29	7.5%	N/A	N/A
Subtotal	--	--	--	--	--	--	--	--	62	16.0%	N/A	N/A
<b>Nursing</b>												
RN/BSN	120	38.2%	122	36.0%	106	28.5%	90	24.5%	97	25.0%	-19.2%	7.8%
Generic BSN	194	61.8%	217	64.0%	266	71.5%	277	75.5%	291	75.0%	50.0%	5.1%
Subtotal	314		339		372		367		388		23.6%	5.7%
<b>Social Science</b>												
Africana Studies	--	--	--	--	1	5.0%	1	4.0%	2	10.0%	N/A	100.0%
Community Mental Health	3	9.4%	8	30.8%	3	15.0%	6	24.0%	4	20.0%	33.3%	-33.3%
Criminology <sup>[1]</sup>	7	21.9%	2	7.7%	1	5.0%	1	4.0%	--	--	N/A	N/A
Cultural Studies	3	9.4%	2	7.7%	1	5.0%	1	4.0%	2	10.0%	-33.3%	100.0%
Ethnic Relations	--	0.0%	--	0.0%	--	0.0%	--	0.0%	1	5.0%	N/A	N/A
Gender Studies	4	12.5%	1	3.8%	1	5.0%	2	8.0%	1	5.0%	-75.0%	-50.0%
Labor Studies	2	6.3%	2	7.7%	1	5.0%	0	0.0%	0	0.0%	N/A	N/A
Unspecified	13	40.6%	11	42.3%	12	60.0%	14	56.0%	10	50.0%	-23.1%	-28.6%
Subtotal	32		26		20		25		20		-37.5%	-20.0%
<b>Theater [2]</b>												
Acting	--	--	--	--	--	--	--	--	16	39.0%	N/A	N/A
Design/Technical Theater	--	--	--	--	--	--	--	--	3	7.3%	N/A	N/A
Directing/Stage Mgmt.	--	--	--	--	--	--	--	--	3	7.3%	N/A	N/A
Unspecified	--	--	--	--	--	--	--	--	19	46.3%	N/A	N/A
Subtotal	--	--	--	--	--	--	--	--	41		N/A	N/A
<b>Visual Arts [2]</b>												
Art History	--	--	--	--	--	--	--	--	5	4.5%	N/A	N/A
Drawing and Painting	--	--	--	--	--	--	--	--	30	27.0%	N/A	N/A
New Media	--	--	--	--	--	--	--	--	4	3.6%	N/A	N/A
Photography	--	--	--	--	--	--	--	--	8	7.2%	N/A	N/A
Sculpture	--	--	--	--	--	--	--	--	5	4.5%	N/A	N/A
Unspecified	--	--	--	--	--	--	--	--	59	53.2%	N/A	N/A
Subtotal	--	--	--	--	--	--	--	--	111		N/A	N/A

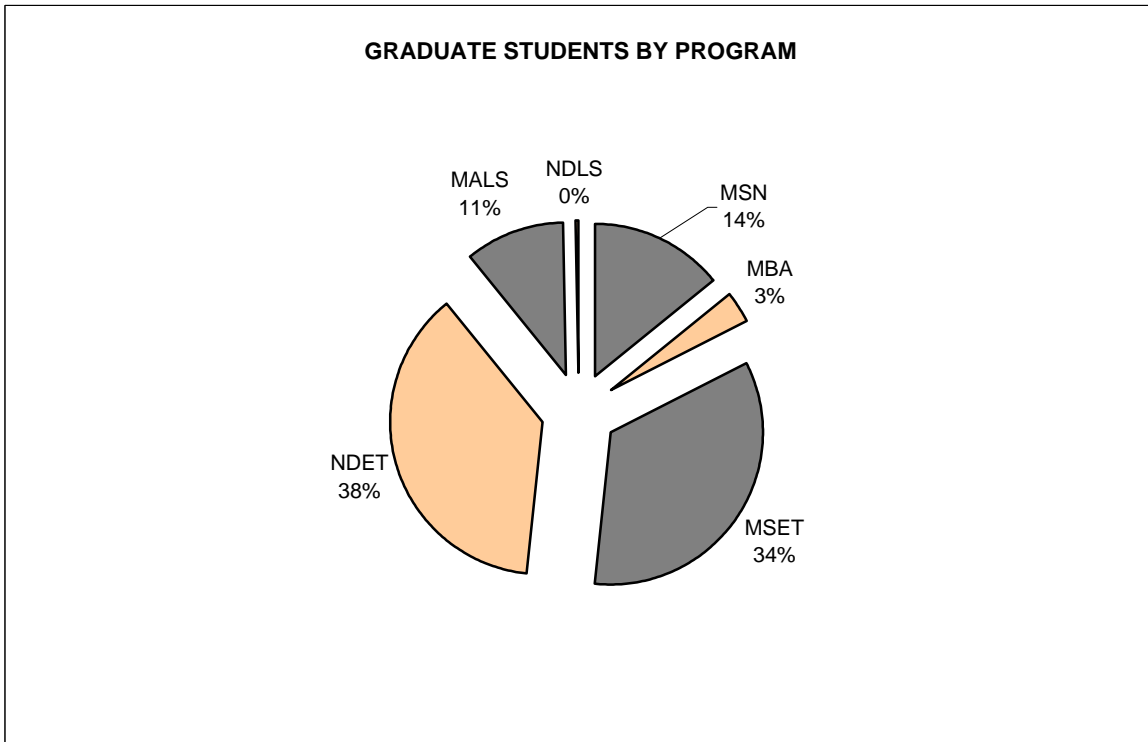
The domicile of certain majors changed in Fall 2006.

[1] The Criminology program is now offered in the major Law and Society (a new major as of fall 2006).

[2] Fine Art concentrations previously included in this table are now majors (Music, Theater, and Visual Arts).

TOTAL FALL 2006 ENROLLMENT = 5,499  
GRADUATE STUDENT ENROLLMENTS BY PROGRAM

Business Administration	10	3.2%
Educational Technology	107	34.4%
Nondegree-seeking: Educational Technology	116	37.3%
Liberal Studies	33	10.6%
Nondegree-seeking: Liberal Studies	1	
Nursing	<u>44</u>	14.1%
	<b>311</b>	



**GRADUATE ENROLLMENT BY PROGRAM, FALL 2002 TO FALL 2006**

Program	Fall 2002		Fall 2003		Fall 2004		Fall 2005		Fall 2006		Percent Change 02 to 06	Percent Change 05 to 06
	No.	Pct.	No.	Pct.	No.	Pct.	No.	Pct.	No.	Pct.		
Liberal Studies	42	12.0%	36	9.3%	32	9.4%	37	12.1%	33	10.6%	-21.4%	-10.8%
Educational Technology	127	36.2%	126	32.4%	142	41.9%	115	37.7%	107	34.4%	-15.7%	-7.0%
Business Administration	81	23.1%	83	21.3%	54	15.9%	31	10.2%	10	3.2%	-87.7%	-67.7%
Nursing	16	4.6%	14	3.6%	15	4.4%	43	14.1%	44	14.1%	175.0%	2.3%
Non-degree-seeking	85	24.2%	130	33.4%	96	28.3%	79	25.9%	117	37.6%	37.6%	48.1%
Total	351		389		339		305		311		-11.4%	2.0%



**GRADUATE NONDEGREE-SEEKING STUDENTS BY AFFILIATION, FALL 2002 TO FALL 2006**

Program	Fall 2002		Fall 2003		Fall 2004		Fall 2005		Fall 2006		Percent Change 02 to 06	Percent Change 05 to 06
	No.	Pct.	No.	Pct.	No.	Pct.	No.	Pct.	No.	Pct.		
Nondegree-seeking - Liberal Studies	2	2.4%	2	1.5%	2	2.1%	6	7.6%	1	0.9%	-50.0%	-83.3%
Nondegree-seeking - Educational Technology	50	58.8%	104	80.0%	89	92.7%	70	88.6%	116	99.1%	132.0%	65.7%
Nondegree-seeking - MBA	33	38.8%	24	18.5%	5	5.2%	3	3.8%	0	0.0%	-100.0%	-100.0%
Nondegree-seeking - Affiliation Unspecified	0	0.0%	0	0.0%	0	0.0%	0	0.0%	0	0.0%	N/A	N/A
Total	85		130		96		79		117		37.6%	48.1%

**ACADEMIC YEAR HEADCOUNT ENROLLMENT, 2001-02 TO 2005-06**

Semester/Session	2001-02	2002-03	2003-04	2004-05	2005-06	Percent Change 01/02 to 05/06	Percent Change 04/05 to 05/06
	No.	No.	No.	No.	No.		
Fall	5,199	5,494	5,631	5,617	5,538	6.5%	-1.4%
Spring	5,060	5,330	5,415	5,403	5,281	4.4%	-2.3%
<i>Annualized [1]</i>	<i>5,130</i>	<i>5,412</i>	<i>5,523</i>	<i>5,510</i>	<i>5,410</i>	<i>5.5%</i>	<i>-1.8%</i>
Summer [2]	1,923	1,989	1,901	1,789	1,752	-8.9%	-2.1%
Winter	864	798	848	651	614	-28.9%	-5.7%
<b>Unduplicated Total [3]</b>	<b>6,567</b>	<b>6,862</b>	<b>6,900</b>	<b>6,809</b>	<b>6,671</b>	<b>1.6%</b>	<b>-2.0%</b>

[1] Calculated by summing the Fall and Spring enrollments and dividing by 2.

[2] Counts are from the summer prior to the academic year so that the 2005-06 academic year covers Summer 2005, Fall 2005, Winter 2006, and Spring 2006.

[3] This is an unduplicated count of the total number of individuals who took at least one course at the College during the academic year.



**ACADEMIC YEAR FTE'S HEADCOUNT ENROLLMENT, 2001-02 TO 2005-06**

Semester/Session	2001-02	2002-03	2003-04	2004-05	2005-06	Percent Change 01/02 to 05/06	Percent Change 04/05 to 05/06
	No.	No.	No.	No.	No.		
Fall	4,036	4,352	4,532	4,679	4,733	17.3%	1.2%
Spring	3,864	4,158	4,317	4,403	4,390	13.6%	-0.3%
<i>Annualized [1]</i>	<i>3,950</i>	<i>4,255</i>	<i>4,425</i>	<i>4,541</i>	<i>4,562</i>	<i>15.5%</i>	<i>0.5%</i>
Summer [2]	331	340	325	298	288	-13.0%	-3.4%
Winter	102	94	102	75	73	-28.4%	-2.7%

[1] Calculated by summing the Fall and Spring enrollments and dividing by 2.

[2] Counts are from the summer prior to the academic year so that the 2005-06 academic year covers Summer 2005, Fall 2005, Winter 2006, and Spring 2006.