

SECTION VII:

ADMINISTRATIVE OPERATIONS

2005 INSTITUTIONAL PROFILE

STATEMENT OF REVENUES, EXPENSES AND CHANGES IN NET ASSETS^[1]

YEAR ENDED JUNE 30, 2001 THROUGH JUNE 30, 2005

(dollars in thousands)

Revenues	\$	\$	\$	\$	\$	% Change	% Change
Operating revenues:	06/30/01 ^[2]	6/30/2002	6/30/03 ^[3]	6/30/2004	6/30/2005	FY01 to FY05	FY04 to FY05
Student tuition and fees, net	16,808	18,746	21,841	25,410	29,746	77.0%	17.1%
Federal grants and contracts	3,222	3,915	3,906	3,521	3,926	21.8%	11.5%
State and local grants/contracts	8,667	4,104	3,945	4,004	4,751	-45.2%	18.7%
Auxiliary enterprises	15,367	16,816	19,765	22,266	23,234	51.2%	4.3%
Other	275	530	225	370	1,348	390.2%	264.3%
<i>Total operating revenues</i>	<i>44,339</i>	<i>44,111</i>	<i>49,682</i>	<i>55,571</i>	<i>63,005</i>	<i>42.1%</i>	<i>13.4%</i>
Expenses							
Operating expenses:							
Instruction	20,860	23,352	24,187	25,296	26,851	28.7%	6.1%
Academic support	3,542	3,508	4,301	4,464	4,756	34.3%	6.5%
Student services	6,139	6,186	7,662	8,232	9,155	49.1%	11.2%
Institutional support	8,588	10,920	12,553	14,351	13,874	61.6%	-3.3%
Student financial aid/scholarships	683	841	902	702	847	24.0%	20.7%
Operations and maint.of plant	7,602	7,105	8,233	9,395	9,653	27.0%	2.7%
Depreciation	4,186	4,997	5,460	6,576	7,697	83.9%	17.0%
Auxiliary	10,401	11,707	12,351	13,043	13,313	28.0%	2.1%
<i>Total operating expenses</i>	<i>62,001</i>	<i>68,616</i>	<i>75,649</i>	<i>82,059</i>	<i>86,146</i>	<i>38.9%</i>	<i>5.0%</i>
Operating loss	(17,662)	(24,505)	(25,967)	(26,488)	(23,141)	31.0%	-12.6%
Nonoperating revenue (expense):							
State of NJ appropriations	27,698	28,206	28,172	28,627	32,430	17.1%	13.3%
Investment income	1,631	937	816	1,306	1,596	-2.1%	22.2%
Interest/asset related debt	(3,301)	(5,496)	(6,868)	(7,560)	(9,025)	173.4%	19.4%
Other nonoperating revenue	33	31	10,501	226	362	997.0%	60.2%
Net nonoperating revenue	26,061	23,678	32,621	22,599	25,363	-2.7%	12.2%
Decrease/increase in net assets	8,399	(827)	6,654	(3,889)	2,222	-73.5%	157.1%
Net assets - begin.of year	45,671	54,070	52,394	59,048	55,159	20.8%	-6.6%
Net assets - end of year	54,070	53,243	59,048	55,159	57,381	6.1%	4.0%

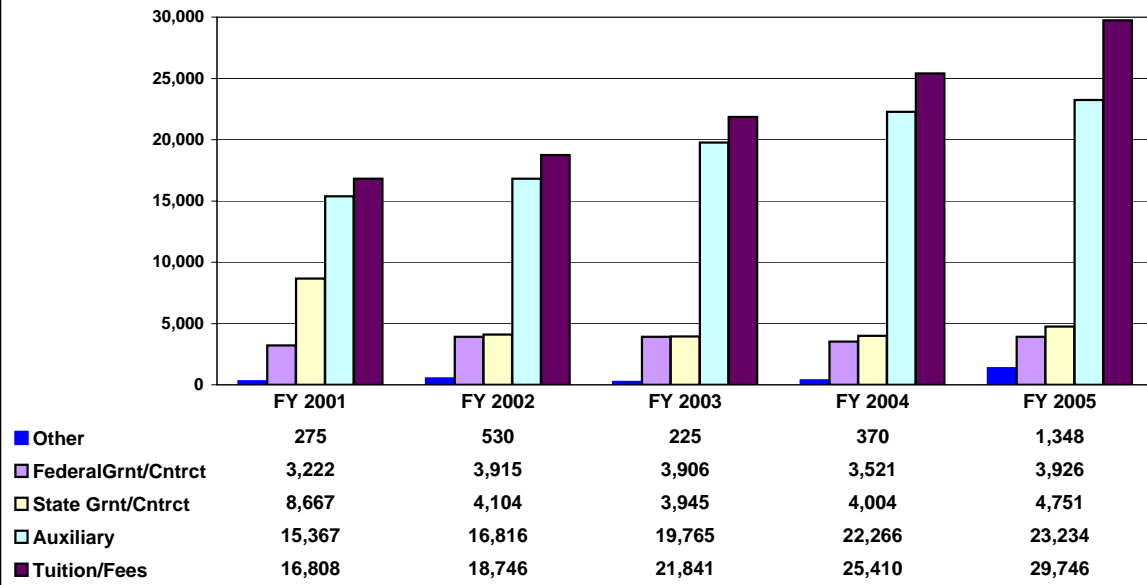
[1] Effective for the year beginning July 1, 2001, the College adopted Governmental Accounting Standards Board Statement (GASB) No. 35, Basic Financial Statements and Management's Discussion and Analysis for Public Colleges and Universities.

[2] Restated

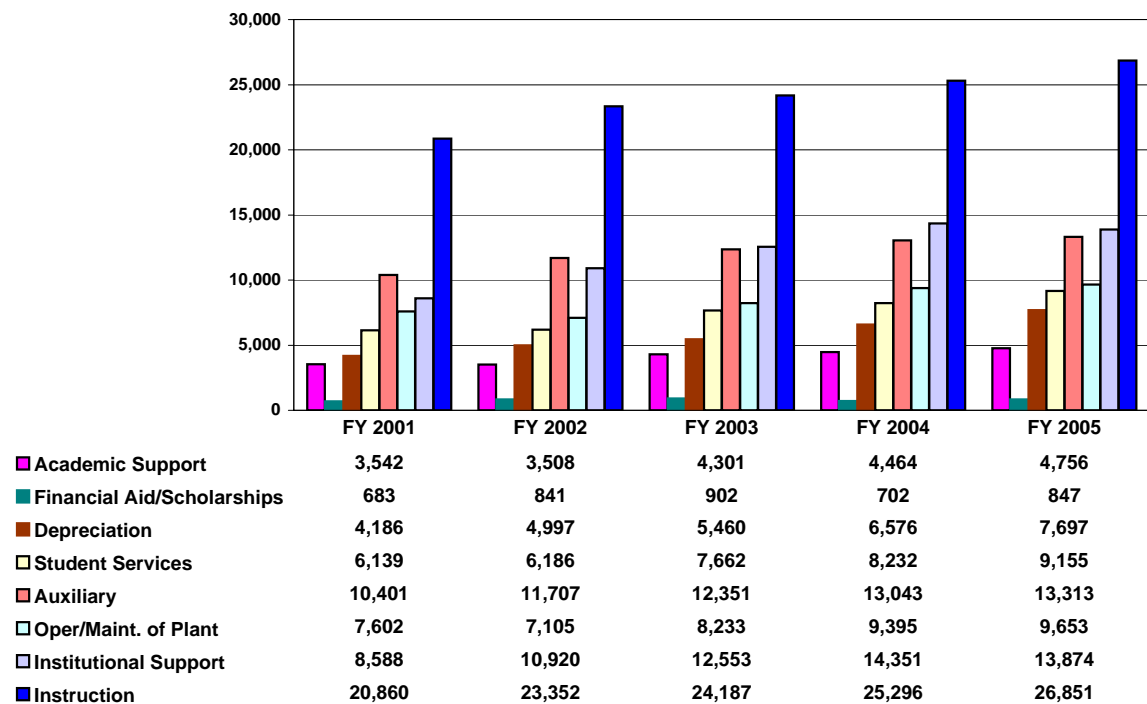
[3] Restated due to reclassification of Revenue and Expense from Auxiliary to Education & General.

Source: Ramapo College of New Jersey Financial Statements, June 30, 2001, 2002, 2003, 2004, 2005

Statement of Revenues (dollars in thousands)



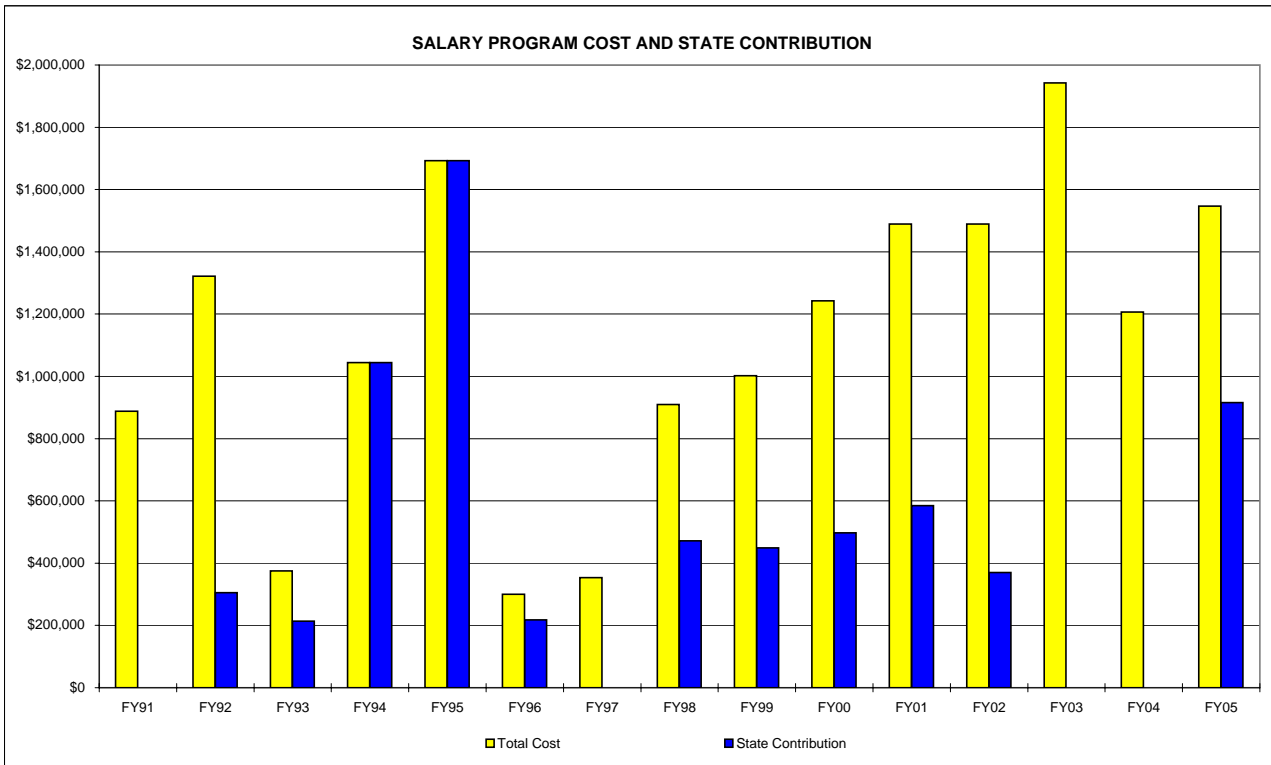
Statement of Expenditures (dollars in thousands)



SALARY PROGRAM: COST AND FUNDING^[1]

Fiscal Year	Total Salary Program	Percent Change From Previous Year	Amount Provided by State for Salary Program	
			Dollars	Percent of Total
1988	\$897,826	N/A	\$826,000	92.00%
1989	\$795,433	-11.4%	\$397,000	49.91%
1990	\$790,464	-0.6%	\$197,616	25.00%
1991	\$888,000	12.3%	\$0	0.00%
1992	\$1,321,793	48.9%	\$305,000	23.07%
1993	\$583,785	-55.8%	\$214,000	36.66%
1994	\$1,044,000	78.8%	\$1,044,000	100.00%
1995	\$1,693,000	62.2%	\$1,693,000	100.00%
1996	\$300,025	-82.3%	\$218,000	72.66%
1997	\$353,794	17.9%	\$0	0.00%
1998	\$909,743	157.1%	\$472,000	51.88%
1999	\$982,394	8.0%	\$449,000	45.70%
2000	\$866,000	-11.8%	\$497,000	57.39%
2001	\$1,242,429	43.5%	\$585,000	47.09%
2002	\$1,489,000	19.8%	\$369,500	24.82%
2003	\$1,942,000	30.4%	\$0	0.00%
2004	\$1,206,716	-37.9%	\$0	0.00%
2005	\$1,546,741	-20.4%	\$916,000	59.22%
2006	not available until 8/15/06			

[1] The fiscal year salary program includes any cost-of-living adjustments, step increases, and catch-up costs from the prior year. The expense represents the increase to the continuation salary costs from one year to the next.



TUITION AND FEES ¹⁾

UNDERGRADUATE

Resident	Academic Year	Academic Year	Academic Year	Academic Year	Academic Year	Percent Change	Percent Change
	2001-02	2002-03	2003-2004	2004-2005	2005-2006		
	\$	\$	\$	\$	\$	01/02 to 05/06	04/05 to 05/06
Annual (full-time) ²⁾							
Tuition	\$4,416.00	\$4,835.52	\$5,270.00	\$5,640.00	\$6,091.20	37.93%	8.00%
Student Activity Fee	\$427.20	\$490.56	\$571.20	\$603.20	\$635.20	48.69%	5.31%
Student Center Fee	\$433.60	\$433.60	\$433.60	\$433.60	\$433.60	0.00%	0.00%
General Service Fee	\$453.44	\$512.00	\$576.00	\$771.84	\$822.40	81.37%	6.55%
Experiential Learning Fee ³⁾	\$64.00	\$70.40	\$80.00	\$84.80	\$89.60	40.00%	5.66%
Media & Technology Fee ⁴⁾	\$384.00	\$432.00	\$480.00	\$547.20	\$592.00	54.17%	8.19%
Facilities Fee	-	-	-	-	\$128.00	N/A	N/A
Total	\$6,178.24	\$6,774.08	\$7,410.80	\$8,080.64	\$8,792.00	42.31%	8.80%
Per Credit (part-time)							
Tuition	\$138.00	\$151.11	\$164.70	\$176.25	\$190.35	37.93%	8.00%
Student Activity Fee	\$13.35	\$15.33	\$17.85	\$18.85	\$19.85	48.69%	5.31%
Student Center Fee	\$13.55	\$13.55	\$13.55	\$13.55	\$13.55	0.00%	0.00%
General Service Fee	\$14.17	\$16.00	\$18.00	\$24.12	\$25.70	81.37%	6.55%
Experiential Learning Fee ³⁾	\$2.00	\$2.20	\$2.50	\$2.65	\$2.80	40.00%	5.66%
Media & Technology Fee ⁴⁾	\$12.00	\$13.50	\$15.00	\$17.10	\$18.50	54.17%	8.19%
Facilities Fee	-	-	-	-	\$4.00	N/A	N/A
Total	\$193.07	\$211.69	\$231.60	\$252.52	\$274.75	42.31%	8.80%

Non-Resident	Academic Year	Academic Year	Academic Year	Academic Year	Academic Year	Percent Change	Percent Change
	2001-02	2002-03	2003-2004	2004-2005	2005-2006		
	\$	\$	\$	\$	\$	01/02 to 05/06	04/05 to 05/06
Annual (full-time) ²⁾							
Tuition	\$7,801.60	\$8,737.92	\$9,524.80	\$10,192.00	\$11,008.00	41.10%	8.01%
Student Activity Fee	\$427.20	\$490.56	\$571.20	\$603.20	\$635.20	48.69%	5.31%
Student Center Fee	\$433.60	\$433.60	\$433.60	\$433.60	\$433.60	0.00%	0.00%
General Service Fee	\$453.44	\$512.00	\$576.00	\$771.84	\$822.40	81.37%	6.55%
Experiential Learning Fee ³⁾	\$64.00	\$70.40	\$80.00	\$84.80	\$89.60	40.00%	5.66%
Media & Technology Fee ⁴⁾	\$384.00	\$432.00	\$480.00	\$547.20	\$592.00	54.17%	8.19%
Facilities Fee	-	-	-	-	\$128.00	N/A	N/A
Total	\$9,563.84	\$10,676.48	\$11,665.60	\$12,632.64	\$13,708.80	43.34%	8.52%
Per Credit (part-time)							
Tuition	\$243.80	\$273.06	\$297.65	\$318.50	\$344.00	41.10%	8.01%
Student Activity Fee	\$13.35	\$15.33	\$17.85	\$18.85	\$19.85	48.69%	5.31%
Student Center Fee	\$13.55	\$13.55	\$13.55	\$13.55	\$13.55	0.00%	0.00%
General Service Fee	\$14.17	\$16.00	\$18.00	\$24.12	\$25.70	81.37%	6.55%
Experiential Learning Fee ³⁾	\$2.00	\$2.20	\$2.50	\$2.65	\$2.80	40.00%	5.66%
Media & Technology Fee ⁴⁾	\$12.00	\$13.50	\$15.00	\$17.10	\$18.50	54.17%	8.19%
Facilities Fee	-	-	-	-	\$4.00	N/A	N/A
Total	\$298.87	\$333.64	\$364.55	\$394.77	\$428.40	43.34%	-98.99%

GRADUATE

Resident	Academic Year	Academic Year	Academic Year	Academic Year	Academic Year	Percent Change	Percent Change
	2001-02	2002-03	2003-2004	2004-2005	2005-2006		
	\$	\$	\$	\$	\$	01/02 to 05/06	04/05 to 05/06
Per Credit (part-time)							
MALS/GET	\$302.00	\$330.69	\$360.45	\$385.70	\$416.60	37.95%	8.01%
MBA	\$312.70	\$342.41	\$373.25	\$399.40	\$431.35	37.94%	8.00%
Student Activity Fee	\$1.45	\$1.45	\$1.65	\$1.85	\$2.00	37.93%	8.11%
Student Center Fee	\$1.45	\$1.45	\$1.50	\$1.85	\$1.85	27.59%	0.00%
General Service Fee	\$1.45	\$1.59	\$1.70	\$1.85	\$12.30	748.28%	564.86%
Media & Technology Fee ⁴⁾	\$12.00	\$13.50	\$15.00	\$17.10	\$18.50	54.17%	8.19%
Facilities Fee	-	-	-	-	\$4.00	N/A	N/A
MALS/GET Total	\$318.35	\$348.68	\$380.30	\$408.35	\$455.25	43.00%	11.49%
MBA Total	\$329.05	\$360.40	\$393.10	\$422.05	\$470.00	42.84%	11.36%
Non-Resident							
Per Credit (part-time)							
MALS/GET	\$379.50	\$425.04	\$463.30	\$495.75	\$535.40	41.08%	8.00%
MBA	\$394.30	\$441.62	\$481.40	\$515.10	\$556.30	41.09%	8.00%
Student Activity Fee	\$1.45	\$1.45	\$1.65	\$1.85	\$2.00	37.93%	8.11%
Student Center Fee	\$1.45	\$1.45	\$1.50	\$1.85	\$1.85	27.59%	0.00%
General Service Fee	\$1.45	\$1.59	\$1.70	\$1.85	\$12.30	748.28%	564.86%
Media & Technology Fee ⁴⁾	\$12.00	\$13.50	\$15.00	\$17.10	\$18.50	54.17%	8.19%
Facilities Fee	-	-	-	-	\$4.00	N/A	N/A
MALS/GET Total	\$395.85	\$443.03	\$483.15	\$518.40	\$574.05	45.02%	10.73%
MBA Total	\$410.65	\$459.61	\$501.25	\$537.75	\$594.95	44.88%	10.64%

[1] The fee charges are the same for both resident and non-resident students.

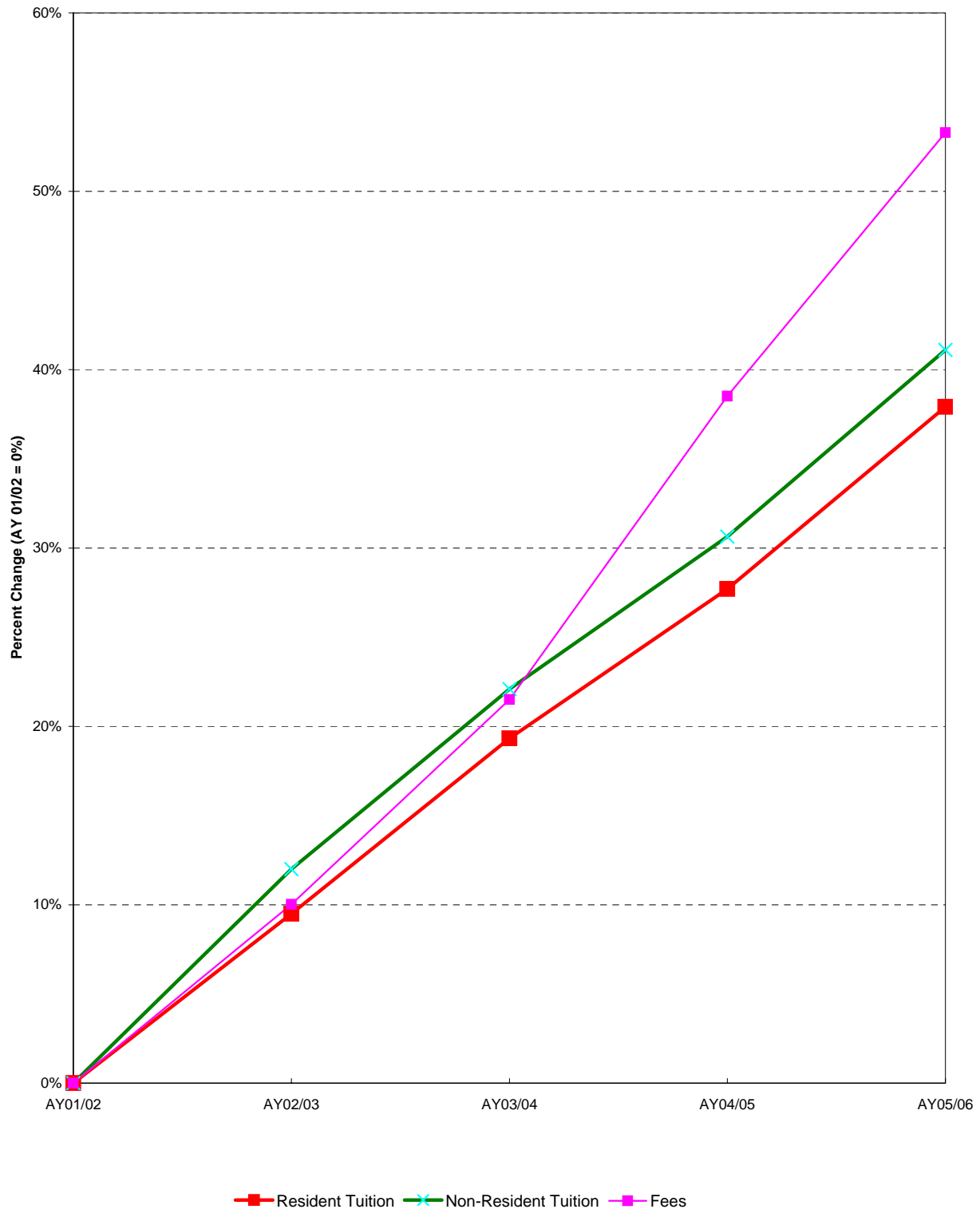
[2] Prior to Fall 99 full-time undergraduate students pay on the basis of 15 credits per semester (30 annualized) for 12 to 18 credits, inclusive.

As of Fall 99, full-time undergraduate students pay on the basis of 16 credits per semester (32 annualized) for 12 to 19 credits, inclusive.

[3] Experiential Learning Fee instated Fall 2000 semester (\$1.00 per credit hour).

[4] M&T fee previously assessed as flat fee. As of Fall 2001 M&T is a tuition related fee calculated on a per credit basis.

CUMULATIVE PERCENT CHANGE IN FULL-TIME TUITION AND FEES



OTHER STUDENT FEES

Resident & Non-Resident	Academic Year	Academic Year	Academic Year	Academic Year	Academic Year	Percent	Percent
	2001-02	2002-03	2003-04	2004-05	2005-06	Change	Change
	\$	\$	\$	\$	\$	01/02 to 05/06	04/05 to 05/06
Admission Deposit (undergrad) ^[1]	\$100.00	\$100.00	\$100.00	\$100.00	\$100.00	0.0%	0.0%
Admission Deposit (grad)	\$200.00	\$200.00	\$200.00	\$200.00	\$200.00	0.0%	0.0%
Application (undergrad)	\$50.00	\$50.00	\$55.00	\$55.00	\$55.00	10.0%	0.0%
Application (grad)	\$55.00	\$55.00	\$55.00	\$55.00	\$55.00	0.0%	0.0%
Athletic Lab Fees:							
Tennis	\$10.00	\$10.00	\$10.00	\$15.00	\$15.00	50.0%	50.0%
Injury Management	\$15.00	\$15.00	\$15.00	\$20.00	\$20.00	33.3%	33.3%
First Aid/CPR	\$35.00	\$35.00	\$35.00	\$40.00	\$40.00	14.3%	14.3%
Scuba Diving	\$135.00	\$135.00	\$135.00	\$140.00	\$140.00	3.7%	3.7%
Golf	\$35.00	\$35.00	\$35.00	\$35.00	\$35.00		
Housing Deposit	\$200.00	\$200.00	\$200.00	\$200.00	\$200.00	0.0%	0.0%
ID Card Replacement	\$15.00	\$15.00	\$15.00	\$15.00	\$15.00	0.0%	0.0%
Laboratory							
1st lab ^[2]	\$50.00	\$50.00	\$50.00	\$50.00	\$50.00	0.0%	0.0%
Each lab thereafter	\$50.00	\$50.00	\$50.00	\$50.00	\$50.00	0.0%	0.0%
Media & Technology ^[3]							
Full-time	(3)	(3)	(3)	(3)	(3)	N/A	N/A
Part-time	(3)	(3)	(3)	(3)	(3)	N/A	N/A
Medical Insurance ^[4]	\$67.00	\$86.00	\$86.00	\$97.00	\$120.00	79.1%	23.7%
Payment Plan - Application Fee (yearly)	\$75.00	\$75.00	\$90.00	\$100.00	\$100.00	33.3%	11.1%
Orientation: ^[5]							
Full-time	\$100.00	\$130.00	\$130.00	\$130.00	\$130.00	30.0%	0.0%
Part-time	\$25.00	\$25.00	--	--	--	N/A	N/A
Transfers	\$50.00	\$65.00	\$65.00	\$65.00	\$65.00	30.0%	0.0%
Parking Fee:							
Full-time	\$100.00	\$100.00	\$75.00	\$90.00	\$100.00	0.0%	11.1%
Part-time	\$100.00	\$100.00	\$75.00	\$90.00	\$100.00	0.0%	11.1%
Second car decal	\$30.00	\$30.00	\$20.00	\$30.00	\$30.00	0.0%	0.0%
Replacement decal	\$30.00	\$30.00	\$20.00	\$30.00	\$30.00	0.0%	0.0%
Dishonored Check	\$40.00	\$40.00	\$40.00	\$40.00	\$40.00	0.0%	0.0%
Redeposit Check	\$15.00	\$15.00	\$15.00	\$15.00	\$15.00	0.0%	0.0%
Student Teaching Fee	\$125.00	\$125.00	\$125.00	\$200.00	\$200.00	60.0%	0.0%
Teacher Certification Fee	\$75.00	\$75.00	\$75.00	\$175.00	\$175.00	133.3%	0.0%
Official Transcript	\$5.00	\$5.00	\$25.00	\$25.00	\$25.00	400.0%	0.0%

[1] Folded into tuition of students accepted and enrolled: Non-refundable to applicants who do not enroll.

[2] Fee instated 94-95 Academic Year.

[3] Flat fee initially instated 94-95 Academic Year. As of Fall 2001 M&T changed from flat fee to a tuition related fee calculated on a per credit basis.

[4] Above fees are for non-international students. Fees are slightly higher for International students.

[5] Part-time student orientation fee dropped AY 03-04.

CHARGES FOR STUDENT HOUSING AND MEAL PLANS

Student Housing	Academic Year 2001-02 \$	Academic Year 2002-03 \$	Academic Year 2003-04 \$	Academic Year 2004-05 \$	Academic Year 2005-06 \$	Percent Change 01/02 to 05/06	Percent Change 04/05 to 05/06
<i>Garden Style Apartments</i>							
2 person/1 bedroom ^[1]	\$5,518.00	\$5,320.00	\$6,142.00	\$6,480.00	\$7,000.00	26.9%	8.0%
4 person/2 bedroom ^[2]	\$5,042.00	\$5,822.00	\$5,612.00	\$5,920.00	\$6,300.00	25.0%	6.4%
6 person/2 bedroom	-	-	-	\$5,628.00	\$5,800.00	N/A	3.1%
<i>Lodge</i>							
one bedroom, common bath	\$5,412.00	\$5,770.00	\$5,510.00	-	-	N/A	N/A
<i>Oak Hall</i>							
2 person/1 bedroom	\$5,518.00	\$5,822.00	\$6,142.00	-	-	N/A	N/A
double room	-	-	-	\$6,480.00	\$6,840.00	N/A	5.6%
<i>Pine Hall</i>							
6 person/3 bedroom ^[3]	\$4,950.00	\$5,222.00	\$5,510.00	-	-	N/A	N/A
double room	-	-	-	\$5,812.00	\$6,140.00	N/A	5.6%
<i>Linden Hall</i>							
4 person/2 bedroom ^[4]	\$4,950.00	\$5,222.00	\$5,510.00	-	-	N/A	N/A
double room	-	-	-	\$5,812.00	\$6,140.00	N/A	5.6%
<i>Maple Hall</i>							
double room	\$5,518.00	\$5,822.00	\$6,142.00	\$6,480.00	\$6,840.00	24.0%	5.6%
triple room	-	-	\$5,836.00	\$6,154.00	\$6,340.00	N/A	3.0%
<i>The Village</i>							
single room	-	\$5,822.00	\$6,600.00	\$6,960.00	\$7,400.00	N/A	6.3%
<i>The Overlook</i>							
double room	-	-	-	\$6,480.00	\$6,840.00	N/A	5.6%
<i>Meal Plan</i>							
10 meals (Tasty 10) ^[5]	\$1,802.00	\$1,940.00	\$1,940.00	\$2,038.00	\$2,038.00	13.1%	0.0%
Flexible 5	-	\$2,020.00	\$2,020.00	\$2,120.00	\$2,120.00	N/A	0.0%
The Ultimate	-	\$2,500.00	\$2,500.00	\$2,624.00	\$2,624.00	N/A	0.0%
The Super 14	-	\$2,460.00	\$2,460.00	\$2,580.00	\$2,580.00	N/A	0.0%
10+ meals	\$2,226.00	-	-	-	-	N/A	N/A
15 meals	\$2,014.00	-	-	-	-	N/A	N/A
15+ meals	\$2,330.00	-	-	-	-	N/A	N/A
19 meals	\$2,118.00	-	-	-	-	N/A	N/A
19+ meals	\$2,422.00	-	-	-	-	N/A	N/A
200 Block Meal Plan	\$2,110.00	-	-	-	-	N/A	N/A
5 and \$500 Flex Meal Plan ^[6]	\$1,920.00	-	-	-	-	N/A	N/A

[1] One Bedroom Apt/Double Room
 [2] Two Bedroom Apt/Double Room
 [3] Double Room

[4] Double Room
 [5] Renamed Tasty Plan, Fall 2002
 [6] New board plan instated Fall 2000.

SALES AND INCOME TO THE COLLEGE FROM THE CAMPUS STORE

Fiscal Year	Sales			Commission *		
	Amount	Percent Change From Previous Year	Cumulative Percent Change From 1984	Amount	Percent Change From Previous Year	Cumulative Percent Change From 1984
1984	\$744,198	N/A	0.0%	\$31,233	N/A	0.0%
1985	\$692,509	-6.9%	-6.9%	\$34,421	10.2%	10.2%
1986	\$786,730	13.6%	5.7%	\$39,174	13.8%	25.4%
1987	\$902,522	14.7%	21.3%	\$48,903	24.8%	56.6%
1988	\$1,044,635	15.7%	40.4%	\$84,309	72.4%	169.9%
1989	\$1,048,231	0.3%	40.9%	\$87,628	3.9%	180.6%
1990	\$1,235,057	17.8%	66.0%	\$91,589	4.5%	193.2%
1991	\$1,500,000	21.5%	101.6%	\$120,000	31.0%	284.2%
1992	\$1,511,888	0.8%	103.2%	\$131,070	9.2%	319.7%
1993	\$1,577,806	4.4%	112.0%	\$137,003	4.5%	338.6%
1994	\$1,647,700	4.4%	121.4%	\$143,300	4.6%	358.8%
1995	\$1,718,917	4.3%	131.0%	\$154,703	8.0%	395.3%
1996	\$1,718,409	0.0%	130.9%	\$154,694	0.0%	395.3%
1997	\$1,810,524	5.4%	143.3%	\$162,947	5.3%	421.7%
1998	\$1,907,934	5.4%	156.4%	\$171,714	5.4%	449.8%
1999	\$2,056,818	7.8%	176.4%	\$185,114	7.8%	492.7%
2000	\$2,138,544	4.0%	187.4%	\$192,469	4.0%	516.2%
2001	\$2,523,811	18.0%	239.1%	\$222,143	15.4%	611.2%
2002	\$2,521,055	-0.1%	238.8%	\$242,232	9.0%	675.6%
2003	\$3,012,500	19.5%	304.8%	\$289,120	19.4%	825.7%
2004	\$3,056,600	1.5%	310.7%	\$299,002	3.4%	857.3%
2005	\$3,255,140	6.5%	337.4%	\$320,045	7.0%	924.7%

* Commission is 8.5% of sales (minus sales tax and refunds) up to one million dollars, and 9% over one million dollars.

FOOD SERVICE COMMISSION

Fiscal Year	Income *	Percent Change From Previous Year	Cumulative Percent Change From 1987
1987	\$36,538	N/A	0.0%
1988	\$39,000	6.7%	6.7%
1989	\$41,147	5.5%	12.6%
1990	\$41,000	-0.4%	12.2%
1991	\$75,000	82.9%	105.3%
1992	\$85,000	13.3%	132.6%
1993	\$90,000	5.9%	146.3%
1994 [1]	\$66,350	-26.3%	81.6%
1995	\$63,471	-4.3%	73.7%
1996	\$60,883	-4.1%	66.6%
1997	\$69,704	14.5%	90.8%
1998	\$66,148	-5.1%	81.0%
1999[2]	\$49,119	-25.7%	34.4%
2000	(\$66,349)	-235.1%	-281.6%
2001	\$336,802	-607.6%	821.8%
2002	\$175,765	-47.8%	381.0%
2003	\$360,934	105.4%	887.8%
2004	\$309,002	-14.4%	745.7%
2005	\$460,175	48.9%	1159.4%

* Income from 8/86 to 8/90 was generated by a monthly rental fee plus 1% of the gross income over \$400,000 (not including Meal Plan). The next contract (8/90 to 8/93) included commission to the College as follows: 5% on all sales up to \$1.5 million, and 8% over \$1.5 million. There was a minimum guarantee per year for each of the three years of the contract of \$75,000, \$85,000, and \$90,000 respectively.

[1] In 9/93 the Food Service changed from DAKA to Woods. \$58,800 paid by Woods and \$7,550 paid by DAKA.

[2] Lower revenues are a result of change in accounting method.

CAPITAL PROJECT STATUS REPORT
(as of 05/25/06)

Name	Budget	Funding Source	Est/Actual Construction Start Date	Estimated Completion Date	Status
Mansion Renovations	\$2,081,804	HECIP	07/01/01	07/31/05	7
Sports and Recreation Center	\$27,738,173	EFABI, HECIP, FR	12/15/02	04/30/05	8
Sustainability Education Center *	\$1,262,185	EFABI, GR, HUD, RCR	10/01/05	09/30/06	3
Phase IX Housing (incl. Garage & Loop Rd, Utility relocations)	\$60,220,108	EFABI	03/01/05	07/31/06	7
Center for Science, Education & Technology	\$30,500,000	EFABI	08/01/05	06/30/07	3
Campus Signage	\$900,000	RCR	07/01/05	10/31/06	8
Sculpture Studio	\$239,465	HECIP	09/01/03	11/30/05	9
Library Waterproofing	\$160,000	HECIP	09/01/03	11/30/05	9
Health Services Building Renovation	\$340,325	HECIP	04/15/04	08/31/04	9
Student Center Renovations Phase IV	\$2,022,000	EFABI	01/01/04	11/30/05	9

Funding Source Code:

EFABI EFA Bond Issue
 HECIP Higher Education Capital Improvement Program
 RCR Ramapo College Reserve
 FR Fund Raising
 GR Grant Funding
 HUD VA HUD Funding

Other Codes:

TBD To Be Determined

Status Code:

1 Concept
 2 A/E Award
 3 Design Initiated
 4 Design Complete
 5 NJ DCA Code Review
 6 Construction Bidding
 7 Under Construction
 8 Substantially Complete
 9 Completed +/- Closed Out

STAFFING SUMMARY BY JOB CATEGORY
Fiscal Year 2001 - 2005

	FY 2001		FY 2002		FY 2003		FY 2004		FY 2005		Percent Change 01 to 05	Percent Change 04 to 05
	No.	Pct.	No.	Pct.	No.	Pct.	No.	Pct.	No.	Pct.		
Faculty [1]	166	28.6%	175	29.7%	178	30.5%	187	29.5%	196	30.6%	18.1%	4.8%
Deans of Schools/Library	6	1.0%	6	1.0%	6	1.0%	6	0.9%	6	0.9%	0.0%	0.0%
Administrative [2]	13	2.2%	13	2.2%	13	10.5%	8	12.0%	9	12.7%	-30.8%	6.6%
Professional	190	32.7%	198	33.6%	199	34.1%	223	35.2%	220	34.4%	15.8%	-1.3%
Other	136	23.4%	136	23.1%	126	21.6%	133	21.0%	128	20.0%	-5.9%	-3.8%
Clerical	70	12.0%	62	10.5%	61	10.5%	76	12.0%	81	12.7%	15.7%	6.6%
Total	581		590		583		633		640		10.2%	1.1%

[1] Includes librarians and full-time substitutes (temporary faculty hired to replace permanent faculty on paid leave or sabbatical). Excludes faculty/staff on long-term disability who are not expected to return.

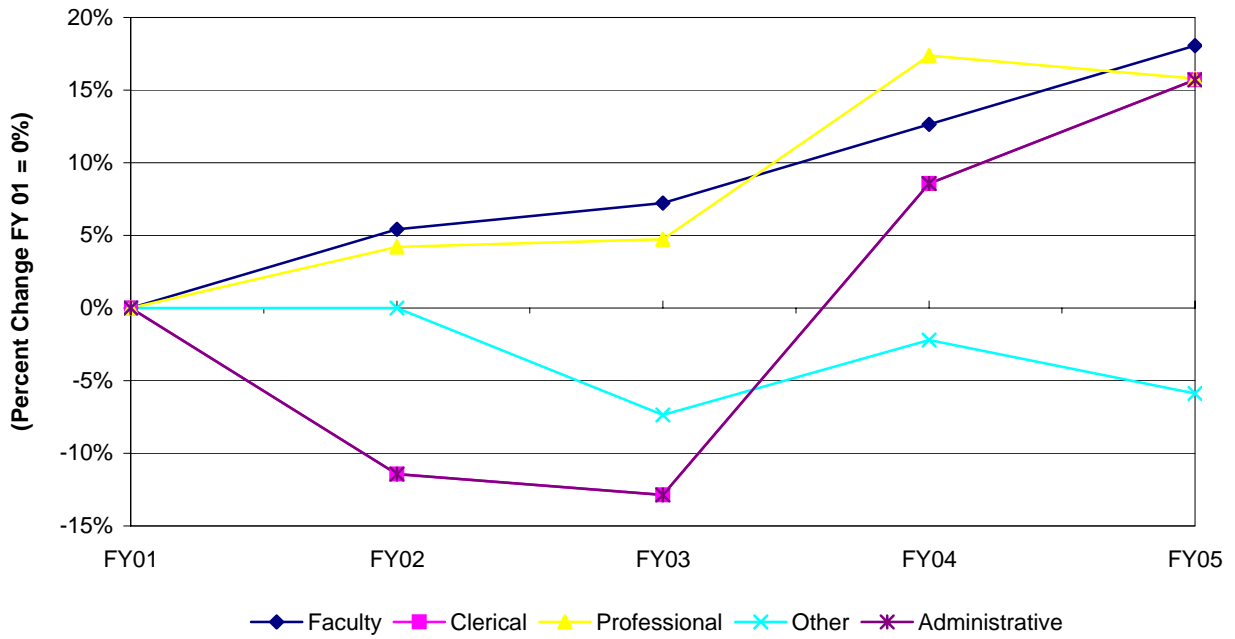
[2] The Administrative configuration changed in 2004 to include the President, the Provost, the Vice Presidents, and the Vice Provosts.

STAFFING SUMMARY BY DIVISION
Fiscal Year 2001 - 2005

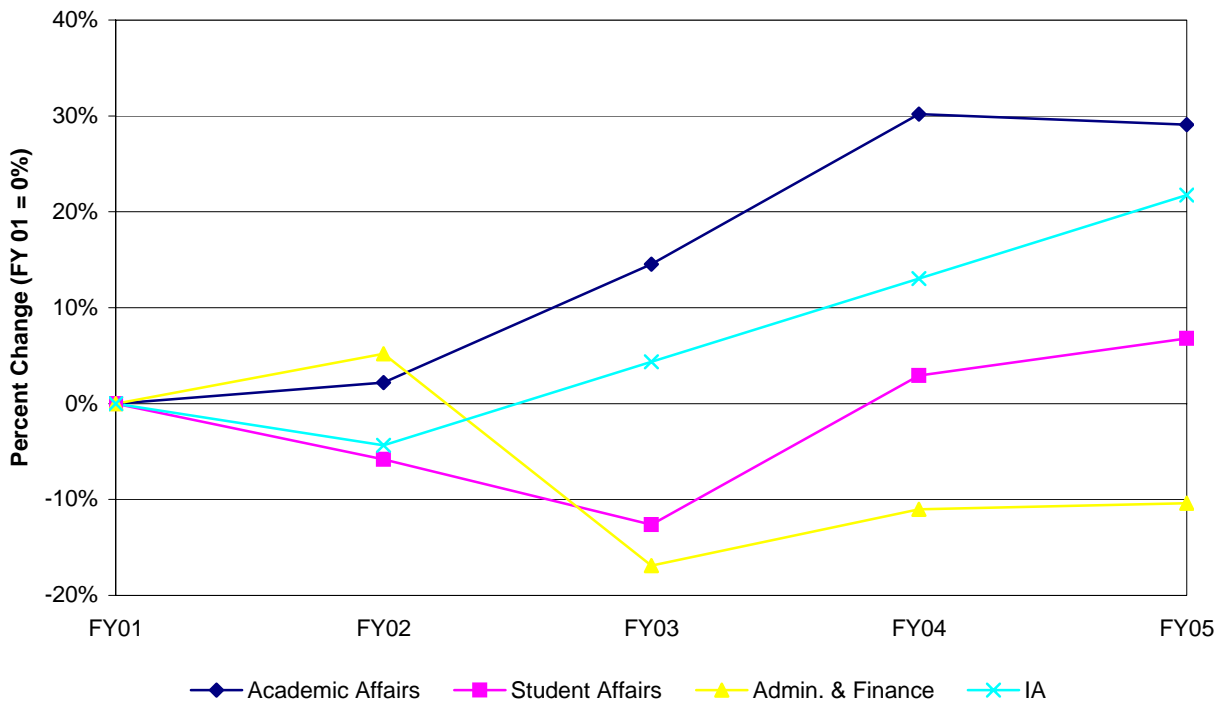
	FY 2001		FY 2002		FY 2003		FY 2004 [3]		FY 2005[3]		Percent Change 01 to 05	Percent Change 04 to 05
	No.	Pct.	No.	Pct.	No.	Pct.	No.	Pct.	No.	Pct.		
Academic Affairs	275	47.3%	281	47.6%	315	54.0%	358	56.6%	355	55.5%	29.1%	-0.8%
Student Affairs	103	17.7%	97	16.4%	90	15.4%	106	16.7%	110	17.2%	6.8%	3.8%
Administration & Finance	154	26.5%	162	27.5%	128	22.0%	137	21.6%	138	21.6%	-10.4%	0.7%
Enrollment Management	21	3.6%	22	3.7%	21	3.6%	--	0.0%	--	0.0%	N/A	N/A
Institutional Advancement	23	4.0%	22	3.7%	24	4.1%	26	4.1%	28	4.4%	21.7%	7.7%
President's Office	5	0.9%	6	1.0%	5	0.9%	6	0.9%	9	1.4%	80.0%	50.0%
Total	581		590		583		633		640		10.2%	1.1%

[3] Academic Affairs's staffing summary for FY 04 includes employees previously reported under Enrollment Management.

CUMULATIVE PERCENT CHANGE IN STAFFING BY JOB CATEGORY
 (includes categories with 10 or more staff in each of 5 years)



CUMULATIVE PERCENT CHANGE IN STAFFING BY DIVISION
 (includes divisions with 10 or more staff in each of 5 years)



STAFFING SUMMARY BY DIVISION AND JOB CATEGORY
Fiscal Year 2005

	Academic Affairs		Student Affairs		Admin. & Finance		Inst. Advancement		President's Office	
	No.	Col. Pct.	No.	Col. Pct.	No.	Col. Pct.	No.	Col. Pct.	No.	Col. Pct.
Faculty	196	55.2%	0	0.0%	0	0.0%	0	0.0%	0	0.0%
Deans of Schools/Library	6	1.7%	0	0.0%	0	0.0%	0	0.0%	0	0.0%
Administrative	4	1.1%	1	0.9%	1	0.7%	1	3.6%	2	22.2%
Professional	95	26.8%	62	56.4%	41	29.7%	17	60.7%	5	55.6%
Other	11	3.1%	34	30.9%	78	56.5%	5	17.9%	0	0.0%
Clerical	43	12.1%	13	11.8%	18	13.0%	5	17.9%	2	22.2%
Total	355		110		138		28		9	

STAFFING SUMMARY BY DIVISION AND SEX
Fiscal Year 2005

	Academic Affairs		Student Affairs		Admin. & Finance		Inst. Advancement		President's Office	
	No.	Col. Pct.	No.	Col. Pct.	No.	Col. Pct.	No.	Col. Pct.	No.	Col. Pct.
Female	178	50.1%	60	54.5%	48	34.8%	20	71.4%	8	88.9%
Male	177	49.9%	50	45.5%	90	65.2%	8	28.6%	1	11.1%
Total	355		110		138		28		9	

STAFFING SUMMARY BY DIVISION AND ETHNICITY
Fiscal Year 2005

	Academic Affairs		Student Affairs		Admin. & Finance		Inst. Advancement		President's Office	
	No.	Col. Pct.	No.	Col. Pct.	No.	Col. Pct.	No.	Col. Pct.	No.	Col. Pct.
Amer. Indian/Alaskan Nat.	2	0.6%	1	0.9%	4	2.9%	0	0.0%	0	0.0%
Asian/Pacific Islander	23	6.5%	2	1.8%	4	2.9%	1	3.6%	1	11.1%
Black, non-Hispanic	36	10.1%	16	14.5%	29	21.0%	1	3.6%	1	11.1%
Hispanic	17	4.8%	6	5.5%	13	9.4%	2	7.1%	0	0.0%
White, non-Hispanic	275	77.5%	84	76.4%	88	63.8%	24	85.7%	7	77.8%
Missing/Other	2	0.6%	1	0.9%	0	0.0%	0	0.0%	0	0.0%
Total	355		110		138		28		9	

**STAFFING SUMMARY BY JOB CATEGORY AND DIVISION
Fiscal Year 2005**

	Faculty		Deans of Schools		Administrative		Professional		Other		Clerical	
	No.	Col. Pct.	No.	Col. Pct.	No.	Col. Pct.	No.	Col. Pct.	No.	Col. Pct.	No.	Col. Pct.
Academic Affairs	196	100.0%	6	100.0%	4	44.4%	95	43.2%	11	8.6%	43	53.1%
Student Affairs	0	0.0%	0	0.0%	1	11.1%	62	28.2%	34	26.6%	13	16.0%
Administration & Finance	0	0.0%	0	0.0%	1	11.1%	41	18.6%	78	60.9%	18	22.2%
Institutional Advancement	0	0.0%	0	0.0%	1	11.1%	17	7.7%	5	3.9%	5	6.2%
President's Office	0	0.0%	0	0.0%	2	22.2%	5	2.3%	0	0.0%	2	2.5%
Total	196		6		9		220		128		81	

**STAFFING SUMMARY BY JOB CATEGORY AND SEX
Fiscal Year 2005**

	Faculty		Deans of Schools		Administrative		Professional		Other		Clerical	
	No.	Col. Pct.	No.	Col. Pct.	No.	Col. Pct.	No.	Col. Pct.	No.	Col. Pct.	No.	Col. Pct.
Female	84	42.9%	2	33.3%	5	55.6%	127	57.7%	24	18.8%	72	88.9%
Male	112	57.1%	4	66.7%	4	44.4%	93	42.3%	104	81.3%	9	11.1%
Total	196		6		9		220		128		81	

**STAFFING SUMMARY BY JOB CATEGORY AND ETHNICITY
Fiscal Year 2005**

	Faculty		Deans of Schools		Administrative		Professional		Other		Clerical	
	No.	Col. Pct.	No.	Col. Pct.	No.	Col. Pct.	No.	Col. Pct.	No.	Col. Pct.	No.	Col. Pct.
Amer. Indian/Alaskan Nat.	0	0.0%	0	0.0%	0	0.0%	0	0.0%	4	3.1%	3	3.7%
Asian/Pacific Islander	11	5.6%	0	0.0%	1	11.1%	14	6.4%	2	1.6%	3	3.7%
Black, non-Hispanic	17	8.7%	1	16.7%	1	11.1%	29	13.2%	26	20.3%	9	11.1%
Hispanic	11	5.6%	0	0.0%	0	0.0%	8	3.6%	15	11.7%	4	4.9%
White, non-Hispanic	156	79.6%	5	83.3%	7	77.8%	168	76.4%	80	62.5%	62	76.5%
Missing/Other	1	0.5%	0	0.0%	0	0.0%	1	0.5%	1	0.8%	0	0.0%
Total	196		6		9		220		128		81	

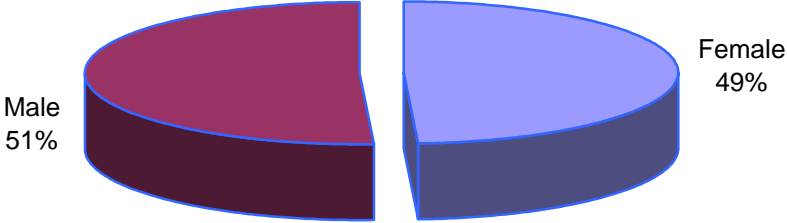
STAFFING SUMMARY BY JOB CATEGORY, ETHNICITY, AND SEX
Fiscal Year 2005

	Amer. Ind./ Nat. Al.		Asian/Pac. Isl.		Black, non-Hisp.		Hispanic		White, non-Hisp.		Missing/Other	
	# Female	# Male	# Female	# Male	# Female	# Male	# Female	# Male	# Female	# Male	# Female	# Male
Faculty	0	0	2	9	4	13	9	2	68	88	1	0
Deans of Schools	0	0	0	0	0	1	0	0	2	3	0	0
Administrative	0	0	0	1	1	0	0	0	4	3	0	0
Professional	0	0	5	9	19	10	4	4	98	70	1	0
Other	3	1	0	2	6	20	3	12	12	68	0	1
Clerical	3	0	2	1	8	1	3	1	56	6	0	0
TOTAL	6	1	9	22	38	45	19	19	240	238	2	1

STAFFING SUMMARY BY DIVISION, ETHNICITY, AND SEX
Fiscal Year 2005

	Amer. Ind./ Nat. Al.		Asian/Pac. Isl.		Black, non-Hisp.		Hispanic		White, non-Hisp.		Missing	
	# Female	# Male	# Female	# Male	# Female	# Male	# Female	# Male	# Female	# Male	# Female	# Male
Academic Affairs	2	0	6	17	15	21	11	6	142	133	2	0
Student Affairs	1	0	0	2	7	9	2	4	50	34	0	1
Admin. & Finance	3	1	1	3	15	14	5	8	24	64	0	0
Inst. Advancement	0	0	1	0	0	1	1	1	18	6	0	0
President's Office	0	0	1	0	1	0	0	0	6	1	0	0
TOTAL	6	1	9	22	38	45	19	19	240	238	2	1

Employees by Sex (N=640)



Employees by Ethnicity (N=640)

