

SECTION VI:

STUDENT SERVICES

2005 INSTITUTIONAL PROFILE

CAHILL CENTER ^[1]

COOPERATIVE EDUCATION

	01/02	02/03	03/04	04/05	05/06	Percent Change 01/02 to 05/06	Percent Change 04/05 to 05/06
Number of Employers	243	271	263	249	277	14.0%	11.2%
Number of Students:							
Female	170	189	196	198	216	27.1%	9.1%
Male	113	143	163	129	132	16.8%	2.3%
Total Students	283	332	359	327	348	23.0%	6.4%
Dollars Earned	\$1,034,756	\$1,256,294	\$1,115,347	\$1,105,414	\$1,051,361	1.6%	-4.9%
Credits Earned	1,137	1,290	1,365	1,218	1,413	24.3%	16.0%

CAREER SERVICES

	01/02	02/03	03/04	04/05	05/06	Percent Change 01/02 to 05/06	Percent Change 04/05 to 05/06
Course Participants	129	140	133	151	143	10.85%	-5.30%
Job Fair Participants	975	950	1250	1200	600	-38.46%	-50.00%

STUDENT ASSISTANT PROGRAM

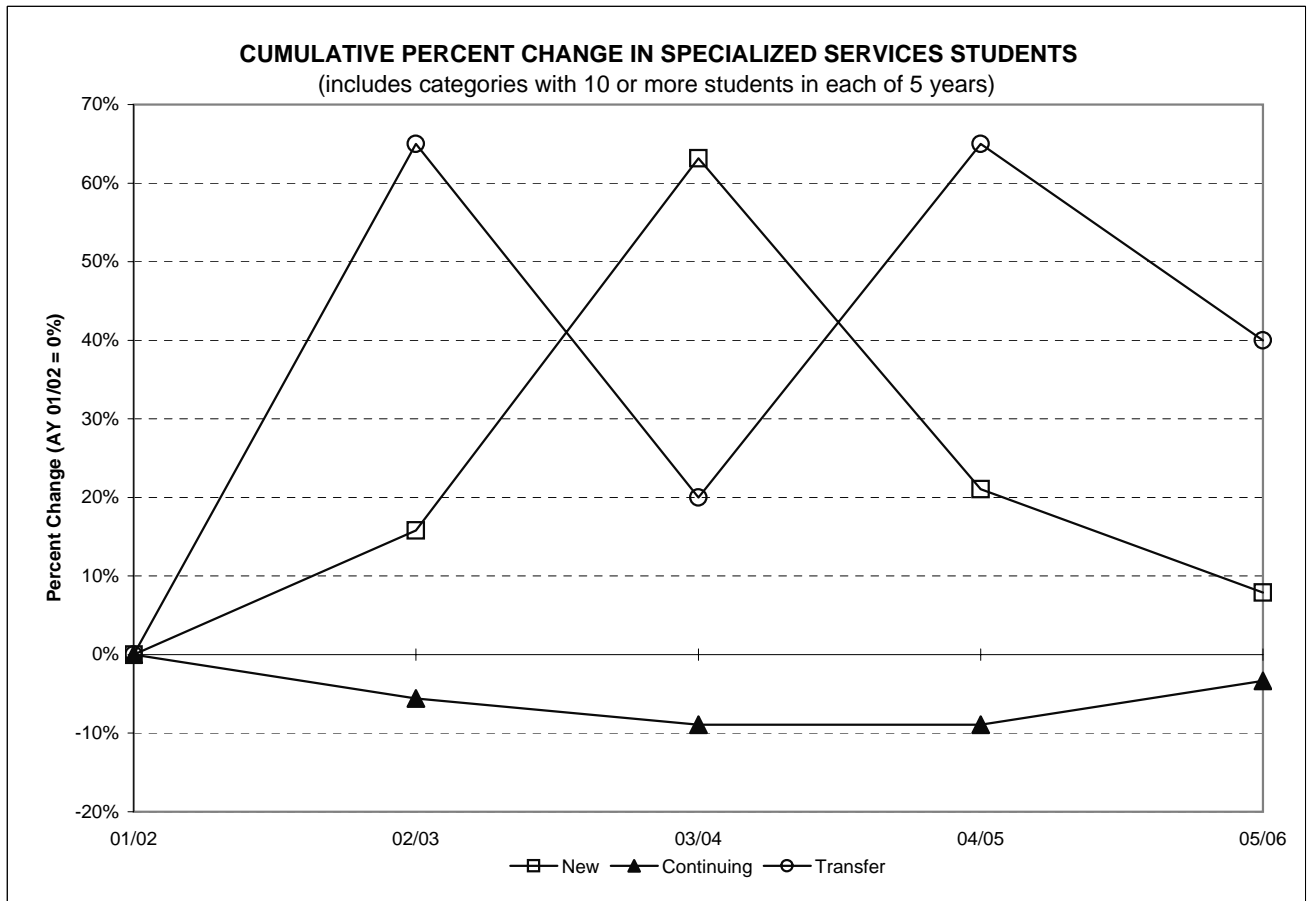
	01/02	02/03	03/04	04/05	05/06	Percent Change 01/02 to 05/06	Percent Change 04/05 to 05/06
Student Workers [2]	491	711	706	782	739	50.51%	-5.50%

[1] This information is not system generated. Data is self-reported by unit.

[2] The Cahill Center acquired responsibility in 2002 for managing students assigned to perform special projects for faculty.

SPECIALIZED SERVICES ^[1]

Students	01/02	02/03	03/04	04/05	05/06	Percent Change	
						01/02 to 05/06	04/05 to 05/06
New [2]	38	44	62	46	41	7.9%	-10.9%
Continuing	179	169	163	163	173	-3.4%	6.1%
Transfer	20	33	24	33	28	40.0%	-15.2%
Re-Admits	0	1	3	1	1	N/A	0.0%
Total	237	247	252	243	243	2.5%	0.0%

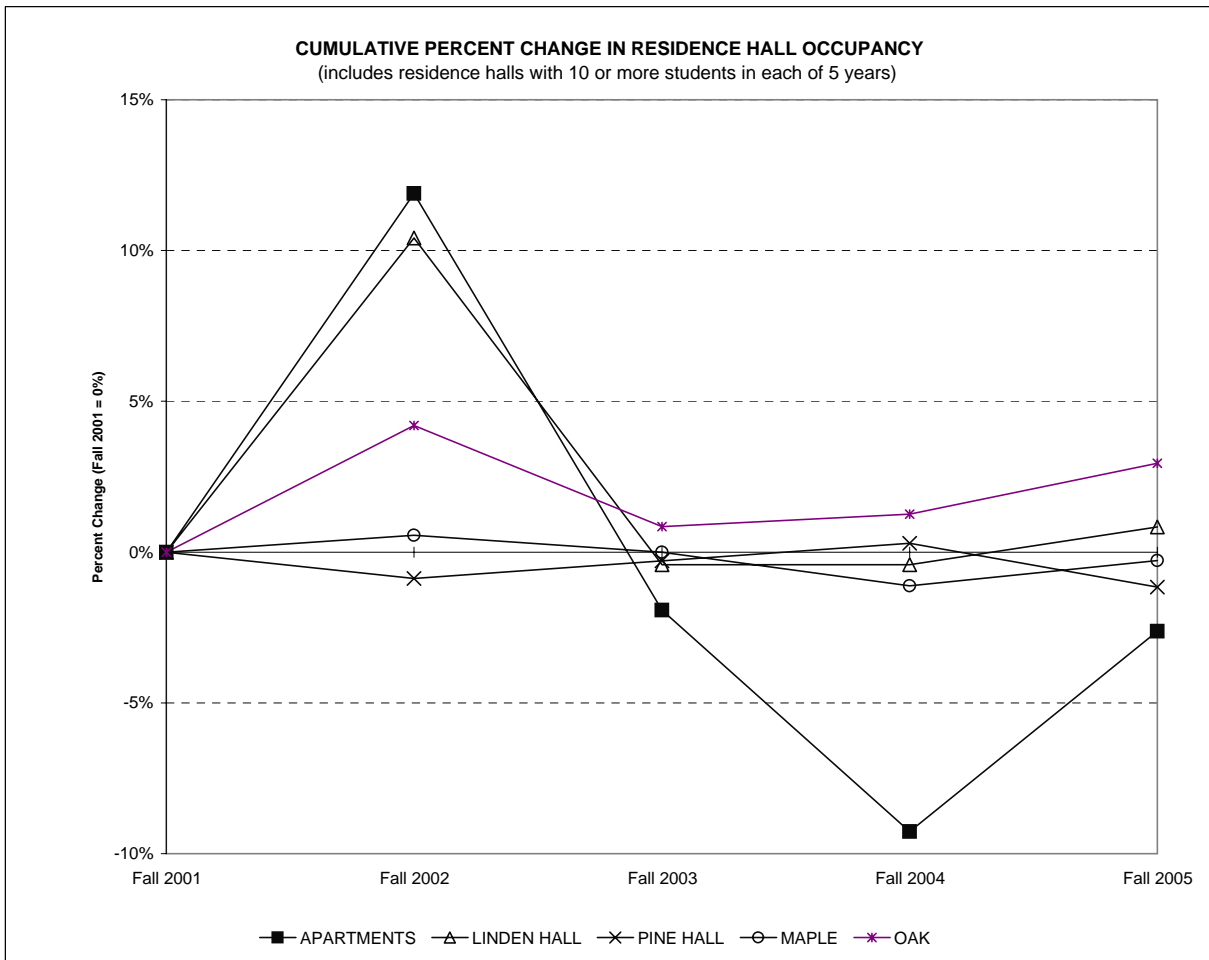


[1] This information is not system-generated. Data is self-reported by unit.

[2] Includes students already enrolled at Ramapo College for one or more semesters, but new to the Office of Specialized Services, and new first-time freshmen.

FALL SEMESTER RESIDENCE HALL OCCUPANCY, 2001 TO 2005^[1]

	Fall 2001		Fall 2002		Fall 2003		Fall 2004		Fall 2005		Percent Change 01 to 05	Percent Change 04 to 05
	Number	Percent	Number	Percent	Number	Percent	Number	Percent	Number	Percent		
APARTMENTS	572	30.1%	640	31.0%	561	24.7%	519	20.8%	557	21.8%	-2.6%	7.3%
LINDEN HALL	240	12.6%	265	12.8%	239	10.5%	239	9.6%	242	9.5%	0.8%	1.3%
LODGE	14	0.7%	17	0.8%	7	0.3%	0	0.0%	0	0.0%	-100.0%	N/A
OAK	238	12.5%	248	12.0%	240	10.6%	241	9.7%	245	9.6%	2.9%	1.7%
MAPLE	359	18.9%	361	17.5%	359	15.8%	355	14.2%	358	14.0%	-0.3%	0.8%
PINE HALL	345	18.1%	342	16.6%	344	15.1%	346	13.9%	341	13.4%	-1.2%	-1.4%
OVERFLOW/HOTEL	135	7.1%	1	0.0%	-	-	-	-	-	-	N/A	N/A
VILLAGE	-	-	191	9.2%	523	23.0%	513	20.5%	520	20.4%	N/A	1.4%
THE OVERLOOK	-	-	-	-	-	-	284	11.4%	290	11.4%	N/A	2.1%
TOTAL	1,903		2,065		2,273		2,497		2,553		34.2%	2.2%



[1] Occupancy as of the 10th day of the semester as reported in the Registrar's official file.

FINANCING FOR RESIDENCE LIFE, STUDENT CENTER, AND EDUCATIONAL PROJECTS ^{[1] [2]}

New Jersey Educational Facilities Bond	Name	Interest Rate	Outstanding	Outstanding	Outstanding	Outstanding	Outstanding	Year Paid in Full
			Principal Payments Jun-01 (000)	Principal Payments Jun-02 (000)	Principal Payments Jun-03 (000)	Principal Payments Jun-04 (000)	Principal Payments Jun-05 (000)	
<u>Residence Life</u>								
Series 1973A	Phase I	5.300% to 5.600%	\$330	\$225	\$115	\$0	\$0	2003
Series 1993E [3]	Pine & Linden	3.500% to 5.500%	\$13,295	\$12,415	\$0	\$0	\$0	n/a
Series 1998G	Oak Hall/Pavilion	4.100% to 4.625%	\$16,455	\$16,150	\$15,830	\$15,500	\$15,155	2028
Series 1999E [5]	Maple Hall/Pavilion Expansion	5.250% to 5.600%	\$19,900	\$19,900	\$19,580	\$2,420	\$2,065	2029
Series 2001D	The Village/Apt. Wiring	4.800% to 5.000%	\$0	\$40,480	\$40,480	\$40,480	\$39,735	2031
Series 2002H	Village Completion/Overlook	2.500% to 5.000%	\$0	\$0	\$28,655	\$28,610	\$28,580	2032
Series 2003G [3]	Pine & Linden	2.000% to 3.709%	\$0	\$0	\$9,300	\$9,300	\$9,300	2013
Series 2003H [5]	Oak Hall/Pavilion/Phase I Renov.	4.250% to 5.000%	\$0	\$0	\$0	\$18,930	\$18,930	2029
Series 2004E	Laurel Hall	3.190% to 5.000%	\$0	\$0	\$0	\$0	\$44,350	2035
<u>Student Center</u>								
Series 1993D [4]	Student Center Annex	3.500% to 5.500%	\$2,415	\$2,285	\$0	\$0	\$0	n/a
Series 1998H	Student Center Renovations	4.100% to 4.600%	\$1,855	\$1,745	\$1,630	\$1,510	\$1,385	2013
Series 2002I	Student Center Renovations	2.500% to 5.00%	\$0	\$0	\$2,145	\$2,085	\$2,045	2032
Series 2003F [4]	Student Center Annex	1.500% to 3.500%	\$0	\$0	\$1,820	\$1,820	\$1,820	2013
<u>Educational & General</u>								
Series 1997A	Berrie Center	4.900% to 5.150%	\$7,330	\$7,330	\$0	\$0	\$0	2003
Series 1998I	Voice, Video, Data	4.100% to 4.500%	\$825	\$735	\$645	\$550	\$450	2008
Series 2000B	Higher Ed Capital Bond Fund	4.500% to 5.750%	\$2,525	\$2,468	\$2,387	\$2,305	\$2,218	2021
Series 2001A	Dormitory Safety		\$0	\$964	\$895	\$826	\$757	2016
Series 2001E	Sustainability Center/Equip.	3.600% to 4.000%	\$0	\$2,535	\$2,225	\$1,885	\$1,535	2008
Series 2002A	Higher Ed Capital Bond Fund	3.00% to 5.250%	\$0	\$0	\$1,849	\$1,850	\$1,850	2023
Series 2002J	Bradley Center/Havemeyer House	2.500% to 5.00%	\$0	\$0	\$29,620	\$29,580	\$29,550	2032
Series 2003A	Equipment Leasing Fund	2.500% to 5.00%	\$0	\$0	\$467	\$467	\$394	2010
Series 2004E	Loop Road/Parking Garage	3.190% to 5.000%	\$0	\$0	\$0	\$0	\$9,630	2035
			<u>\$64,930</u>	<u>\$107,232</u>	<u>\$157,643</u>	<u>\$158,118</u>	<u>\$209,749</u>	

[1] This information is not system-generated. Data is self-reported by unit.

[2] The College has pledged all revenues generated from the operation of the residential facilities, the student center building and from other legally available funds of the College under the aforementioned capital lease agreements.

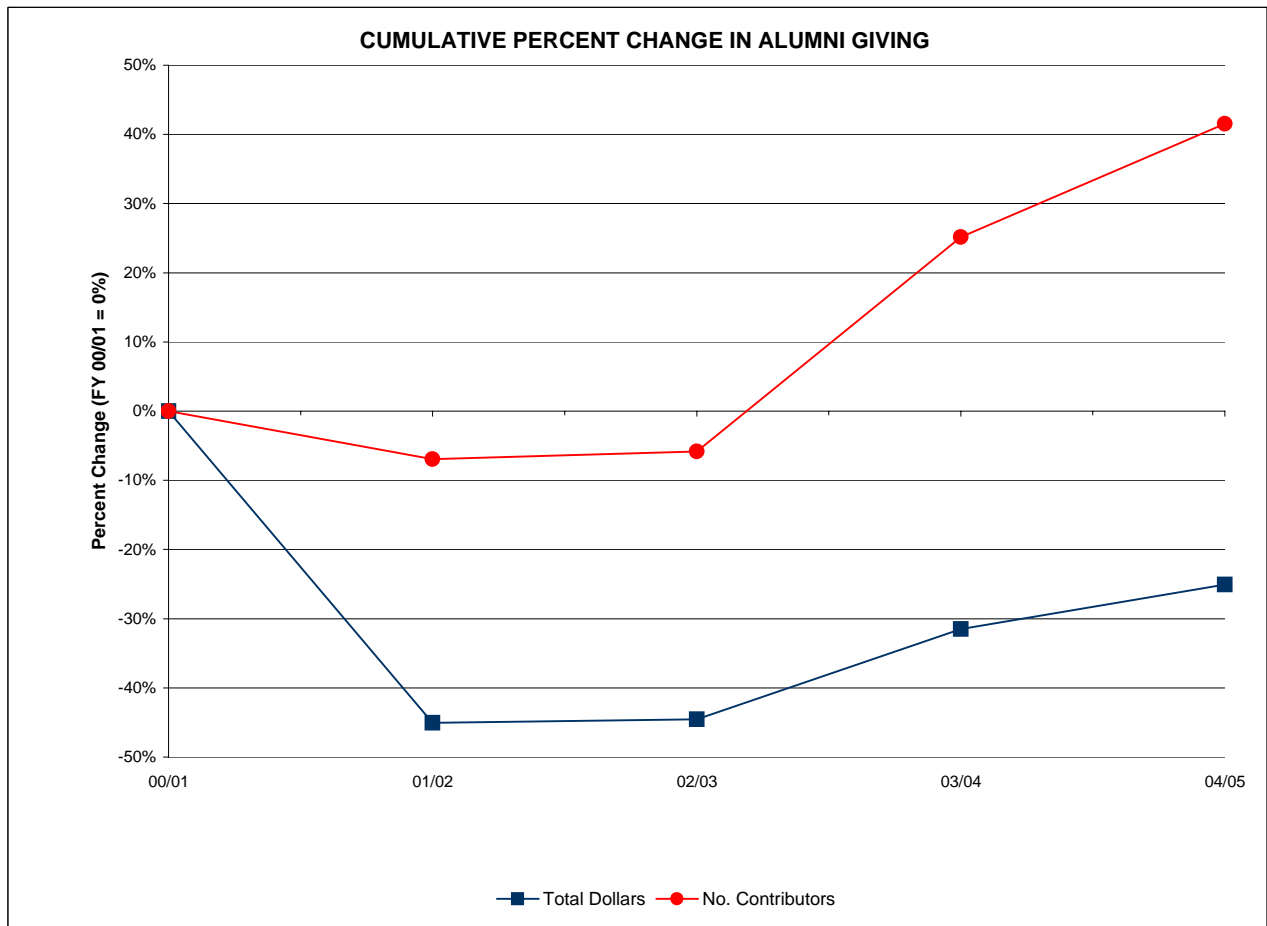
[3] Series 2003G replaced series 1993E through refinancing.

[4] Series 2003F replaced series 1993D through refinancing.

[5] Series 2003H partially replaced series 1999E through refinancing.

ALUMNI GIVING, FISCAL YEAR 2001 TO FISCAL YEAR 2005 ^[1]

Giving	00/01	01/02	02/03	03/04	04/05	Percent Change	
						01/02 to 05/06	04/05 to 05/06
Total Dollars	\$172,080	\$94,548	\$95,423	\$117,854	\$128,918	-25.1%	9.4%
Number of Donors	1,308	1,217	1,232	1,637	1,851	41.5%	13.1%
Average Alumni Donation	\$131.56	\$77.69	\$77.46	\$71.99	\$69.65	-47.1%	-3.3%
Number of Alumni Solicited	14,718	15,047	15,384	15,825	16,574	12.6%	4.7%
Phonathon New Donors	375	326	346	351	353	-5.9%	0.6%



[1] This information is not system-generated. Data is self-reported by unit.

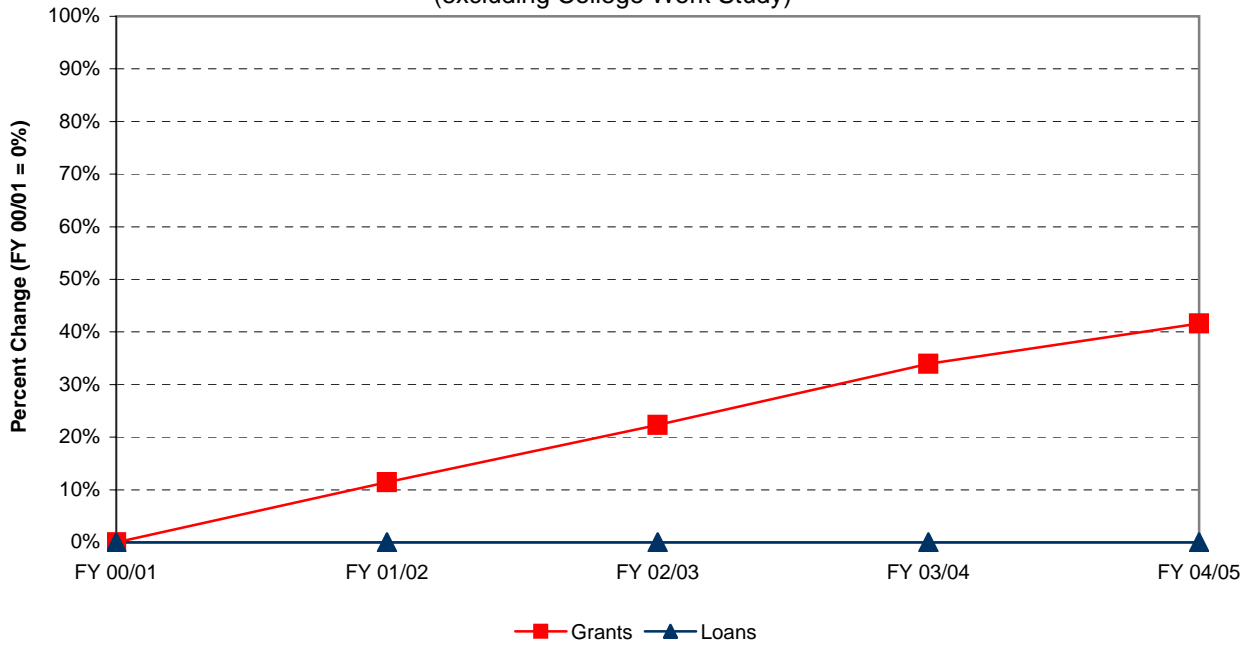
STUDENT FINANCIAL AID, FY 2001 TO FY 2005^[1]

Financial Aid Dollars	FY 00/01	FY 01/02	FY 02/03	FY 03/04	FY 04/05	Percent Change	Percent Change
	\$	\$	\$	\$	\$	00/01 to 04/05	03/04 to 04/05
Pell Grants	\$1,929,106	\$2,190,637	\$2,401,840	\$2,514,153	\$2,473,848	28.2%	-1.6%
College Work Study	\$212,131	\$195,703	\$250,195	\$193,790	\$231,882	9.3%	19.7%
Perkins Loans	\$110,164	\$114,784	\$192,813	\$159,703	\$189,259	71.8%	18.5%
Stafford Loans (total)	\$8,196,464	\$8,825,414	\$9,564,939	\$10,251,425	\$11,027,934	34.5%	7.6%
Subsidized	\$4,776,631	\$5,068,923	\$5,761,135	\$6,392,347	\$6,997,434	46.5%	9.5%
Un-subsidized	\$3,419,833	\$3,756,491	\$3,803,804	\$3,859,078	\$4,030,500	17.9%	4.4%
SEOG	\$214,980	\$225,855	\$233,320	\$237,350	\$239,269	11.3%	0.8%
Parents Loans for Dependent Students (PLUS)	\$847,546	\$1,248,652	\$1,921,468	\$2,632,337	\$3,336,712	293.7%	26.8%
Ramapo College Grants (total)	\$3,210,299	\$3,720,368	\$4,290,405	\$4,962,062	\$5,203,193	62.1%	4.9%
EOF	\$332,622	\$387,838	\$430,818	\$498,888	\$419,534	26.1%	-15.9%
Non-EOF	\$48,677	\$59,530	\$39,859	\$0	\$1,767	-96.4%	N/A
Institutional Grants	\$2,829,000	\$3,273,000	\$3,819,728	\$4,463,174	\$4,781,892	69.0%	7.1%
TAG	\$2,210,396	\$2,360,593	\$2,440,560	\$2,574,564	\$2,983,577	35.0%	15.9%
Educational Opportunity Fund (EOF)	\$353,411	\$325,519	\$318,206	\$315,499	\$311,800	-11.8%	-1.2%
New Jersey Class Loans	\$1,333,870	\$1,931,612	\$2,541,377	\$3,077,285	\$3,232,706	142.4%	5.1%
Private Loans	N/A	\$203,953	\$572,703	\$891,351	\$1,566,375	N/A	75.7%
Total	\$18,618,367	\$21,343,090	\$24,727,826	\$27,809,519	\$30,796,555	65.4%	10.7%

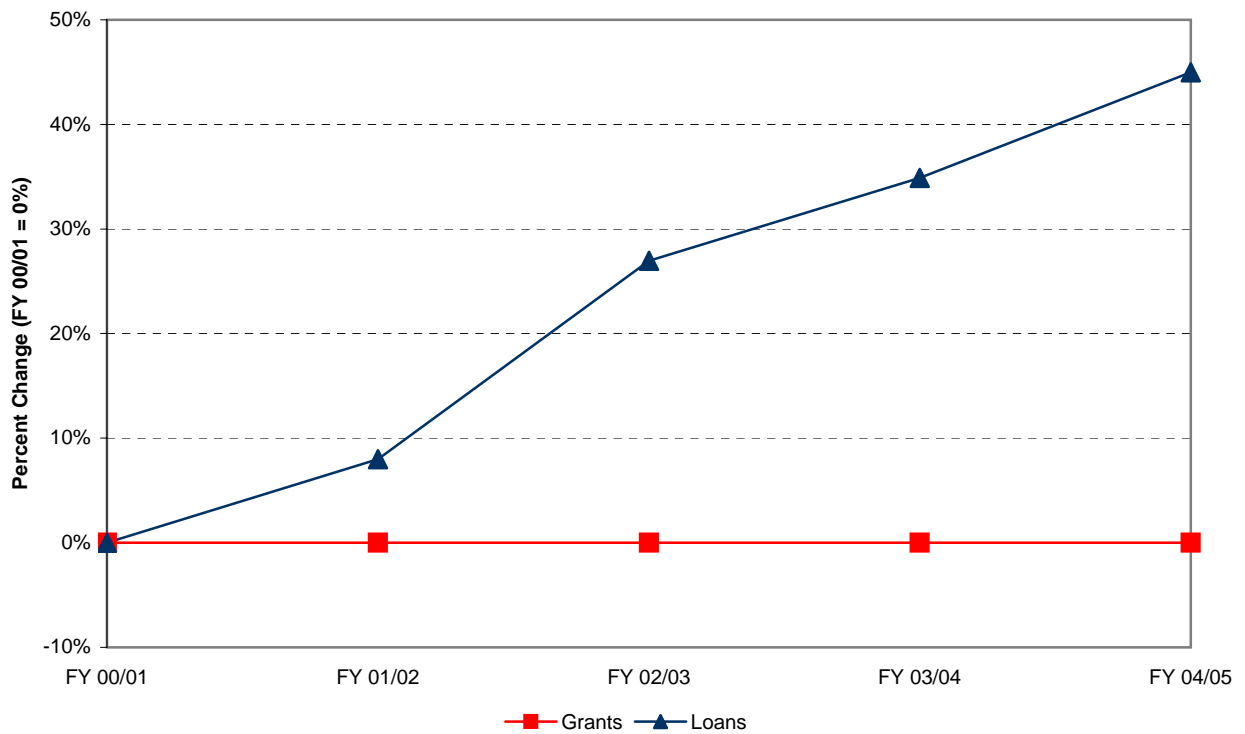
Financial Aid Recipients	FY 00/01	FY 01/02	FY 02/03	FY 03/04	FY 04/05	Percent Change	Percent Change
	#	#	#	#	#	00/01 to 04/05	03/04 to 04/05
Pell Grants	866	854	924	951	942	8.8%	-0.9%
College Work Study	187	172	201	127	197	5.3%	55.1%
Perkins Loans	96	95	163	128	147	53.1%	14.8%
Stafford Loans (total)	2,317	2,413	2,649	2,783	2,909	25.6%	4.5%
Subsidized	1,355	1,422	1,597	1,703	1,839	35.7%	8.0%
Un-subsidized	962	991	1,052	1,080	1,070	11.2%	-0.9%
SEOG	191	195	222	211	273	42.9%	29.4%
Parents Loans for Dependent Students (PLUS)	161	184	296	353	420	160.9%	19.0%
Ramapo College Grants (total)	701	728	971	878	753	7.4%	-14.2%
EOF	163	95	160	109	124	-23.9%	13.8%
Non-EOF	52	55	39	0	1	-98.1%	#DIV/0!
Institutional Grants	486	578	772	769	628	29.2%	-18.3%
TAG	775	785	819	827	865	11.6%	4.6%
Educational Opportunity Fund (EOF)	278	276	267	264	274	-1.4%	3.8%
New Jersey Class Loans	201	272	339	375	369	83.6%	-1.6%
Private Loans	N/A	33	76	104	178	N/A	71.2%
Total	5,773	6,007	6,927	7,001	7,327	26.9%	4.7%

[1] This information is not system-generated. Data is self-reported by unit.

CUMULATIVE PERCENT CHANGE IN FINANCIAL AID DOLLARS BY SOURCE
(excluding College Work Study)



CUMULATIVE PCT. CHANGE IN NO. OF FINANCIAL AID RECIPIENTS BY SOURCE
(excluding College Work Study)



CAMPUS SECURITY ANNUAL REPORT ^[1]

Reported Occurrences	99/00	00/01	01/02	02/03	03/04	Percent Change 99/00 to 03/04	Percent Change 02/03 to 03/04
	Criminal Homicide	0	0	0	0	0	N/A
<i>Sexual Offenses:</i>							
Forcible: Rape, Sodomy, Assault (with an object), Fondling	6	3	7	4	5	-16.7%	25.0%
Non-Forcible: Incest, Statutory Rape	0	0	0	0	0	N/A	N/A
Robbery	0	0	2	0	0	N/A	N/A
Aggravated Assault	5	2	1	2	0	-100.0%	-100.0%
Burglary	23	22	21	11	8	-65.2%	-27.3%
Motor Vehicle Theft	0	2	4	1	0	N/A	-100.0%
Arson	0	0	0	0	0	N/A	N/A
Hate Crimes	0	0	0	0	0	N/A	N/A
Arrests:							
Weapon Law Violation	0	0	0	2	0	N/A	-100.0%
Drug Abuse Violation	16	19	7	12	3	-81.3%	-75.0%
Liquor Law Violation	3	0	0	0	0	-100.0%	N/A

[1] This information is not system-generated. Data is self-reported by unit. Crime statistics reported using FBI definitions. Figures are most current available.

STUDENT PARTICIPATION IN STUDY ABROAD AND OTHER OFF-CAMPUS PROGRAMS, 2001 TO 2005 ^[1]

All Students	AY 01-02		AY 02-03		AY 03-04		AY 04-05		AY 05-06 ^[11]		Percent Change 01/02 to 05/06	Percent Change 04/05 to 05/06
	No.	Pct.	No.	Pct.	No.	Pct.	No.	Pct.	No.	Pct.		
American Southwest	11	6.2%	14	7.8%	21	11.7%	19	8.6%	24	14.0%	118.2%	26.3%
American West [2]	18	10.2%	8	4.5%	11	6.1%	9	4.1%	0	0.0%	-100.0%	-100.0%
Australia (Macquarie University) [3]	-	-	-	-	3	1.7%	6	2.7%	10	5.8%	N/A	66.7%
China	20	11.3%	0	0.0%	0	0.0%	0	0.0%	0	0.0%	-100.0%	N/A
Costa Rica [4]	31	17.5%	29	16.2%	22	12.3%	21	9.5%	0	0.0%	-100.0%	-100.0%
England [5]	30	16.9%	63	35.2%	84	46.9%	52	23.5%	69	40.4%	130.0%	32.7%
India [6]	-	-	-	-	13	7.3%	10	4.5%	14	8.2%	N/A	40.0%
Ireland	21	11.9%	19	10.6%	38	21.2%	0	0.0%	1	0.6%	-95.2%	N/A
Italy [7]	12	6.8%	0	0.0%	3	1.7%	40	18.1%	1	0.6%	-91.7%	-97.5%
Jamaica	16	9.0%	16	8.9%	16	8.9%	0	0.0%	11	6.4%	-31.3%	N/A
Prague	7	4.0%	10	5.6%	6	3.4%	8	3.6%	0	0.0%	-100.0%	-100.0%
Quebec City	2	1.1%	3	1.7%	2	1.1%	3	1.4%	0	0.0%	-100.0%	-100.0%
Spain (with NJSCIS)	-	-	-	-	-	-	-	-	1	0.6%	N/A	N/A
South Africa [8]	-	-	10	5.6%	0	0.0%	0	0.0%	0	0.0%	N/A	N/A
Washington D.C. Internship [9]	-	-	2	1.1%	2	1.1%	1	0.5%	0	0.0%	N/A	-100.0%
Other Programs [10]	9	5.1%	5	-	0	0.0%	2	0.9%	3	1.8%	-66.7%	50.0%
Total	177		179		221		171		134		-24.3%	-21.6%

[1] This information is not system-generated. Data is self-reported by unit. These numbers include students from both Ramapo College and other campuses.

[2] American West AY 03-04 headcount increased from 10 to 11 due to student who registered after publication of Fall 2003 Institutional Profile.

[3] The Australia (Macquarie University) program is a credit-bearing semester sponsored by Ramapo as of 2004.

[4] The Costa Rica program includes credit-bearing trips (the Intensa Spanish Language program and the Eco-Program).

[5] The England program includes credit-bearing trips as well as the Regent's program semester study.

[6] The India program is a credit-bearing semester sponsored by Ramapo as of 2004.

[7] The Italy program includes credit bearing trips to Rome or Matera.

[8] The South African program includes credit-bearing trips sponsored by Ramapo as of 2001.

[9] The Washington DC program is a credit-bearing semester sponsored by Ramapo. Previously it was included in "Other".

[10] Represents Ramapo student participation in non-Ramapo sponsored programs.

[11] Beginning in Fall 2005, Ramapo programs are conducted through the N.J. State Consortium for International Studies (NJSCIS).

Only 4 programs are sponsored entirely through Ramapo (American SW, American West, India & Australia).

