

**SECTION V:**

**FACULTY AND INSTRUCTION**

2005 INSTITUTIONAL PROFILE

**FACULTY BY RANK [1]  
FALL 2001 TO FALL 2005**

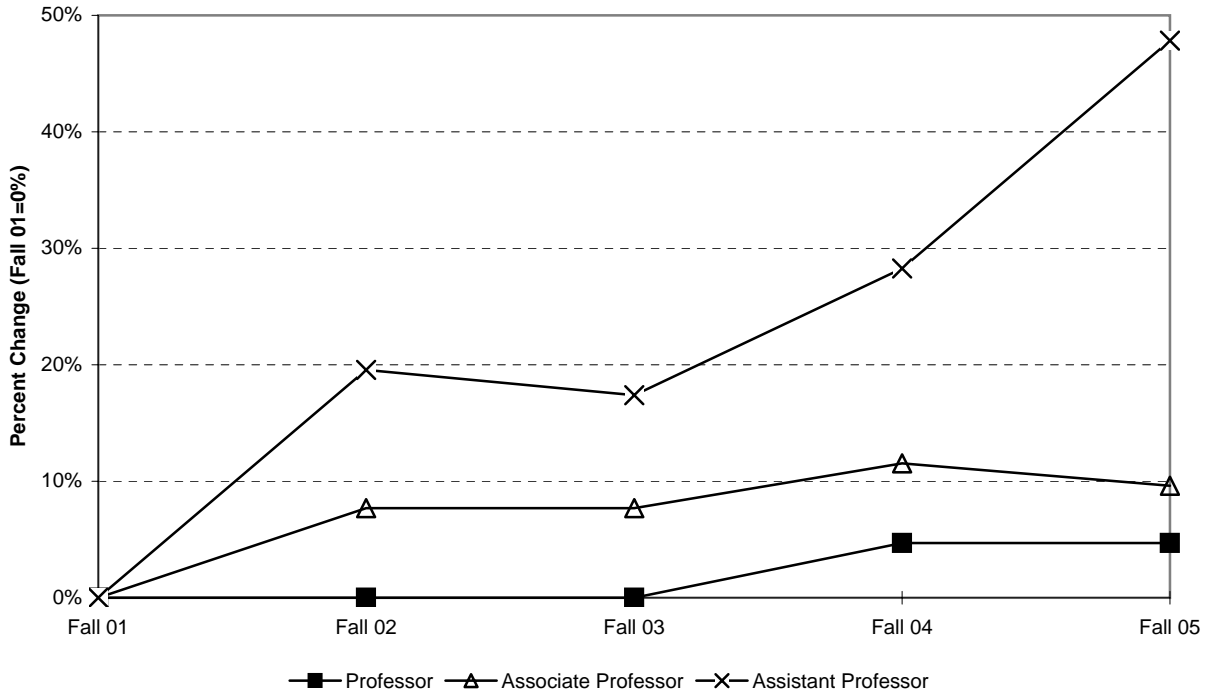
	Fall 2001		Fall 2002		Fall 2003		Fall 2004		Fall 2005		Percent Change 01 to 05	Percent Change 04 to 05
	No.	Pct.	No.	Pct.	No.	Pct.	No.	Pct.	No.	Pct.		
Professor	64	37.6%	64	35.0%	64	35.2%	67	34.7%	67	33.3%	4.7%	0.0%
Associate Professor	52	30.6%	56	30.6%	56	30.8%	58	30.1%	57	28.4%	9.6%	-1.7%
Assistant Professor	46	27.1%	55	30.1%	54	29.7%	59	30.6%	68	33.8%	47.8%	15.3%
Librarian	8	4.7%	8	4.4%	8	4.4%	9	4.7%	9	4.5%	12.5%	0.0%
Total	170		183		182		193		201		18.2%	4.1%

[1] Includes both tenured and non-tenured faculty. Includes Deans, but does not include faculty serving in administrative positions.  
Excludes full-time substitutes hired to replace faculty on paid leave or sabbatical.

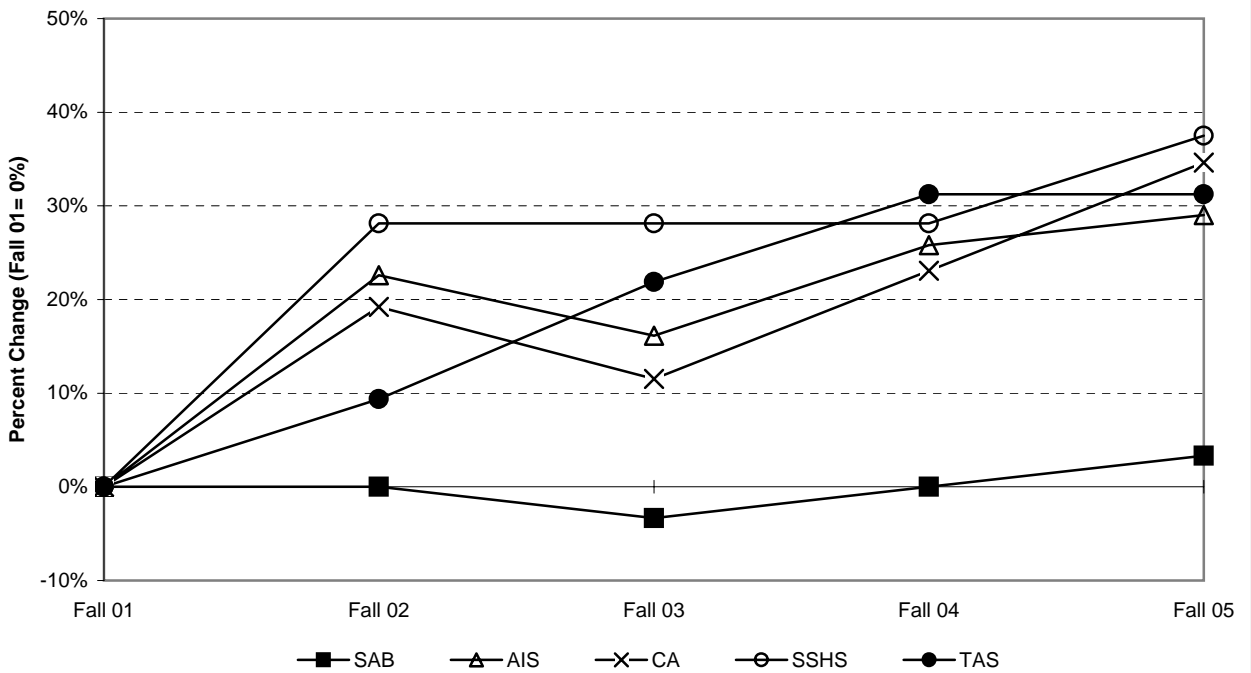
**FACULTY BY SCHOOL OR DIVISION  
FALL 2001 TO FALL 2005**

	Fall 2001		Fall 2002		Fall 2003		Fall 2004		Fall 2005		Percent Change 01 to 05	Percent Change 04 to 05
	No.	Pct.	No.	Pct.	No.	Pct.	No.	Pct.	No.	Pct.		
School of Administration/ Business	30	17.6%	30	16.4%	29	15.9%	30	15.5%	31	15.4%	3.3%	3.3%
School of American/ International Studies	31	18.2%	38	20.8%	36	19.8%	39	20.2%	40	19.9%	29.0%	2.6%
School of Contemporary Arts	26	15.3%	31	16.9%	29	15.9%	32	16.6%	35	17.4%	34.6%	9.4%
School of Social Science/ Human Services	32	18.8%	41	22.4%	41	22.5%	41	21.2%	44	21.9%	37.5%	7.3%
School of Theoretical/ Applied Science	32	18.8%	35	19.1%	39	21.4%	42	21.8%	42	20.9%	31.3%	0.0%
Division of Basic Studies	11	6.5%	--	0.0%	--	0.0%	--	0.0%	--	0.0%	N/A	N/A
Library	8	4.7%	8	4.4%	8	4.4%	9	4.7%	9	4.5%	12.5%	0.0%
Total	170		183		182		193		201		18.2%	4.1%

**CUMULATIVE PERCENT CHANGE IN FACULTY BY RANK**  
 (includes ranks with 10 or more faculty in each of 5 years)



**CUMULATIVE PERCENT CHANGE IN FACULTY BY SCHOOL**  
 (includes schl/div with 10 or more faculty in each of 5 years)

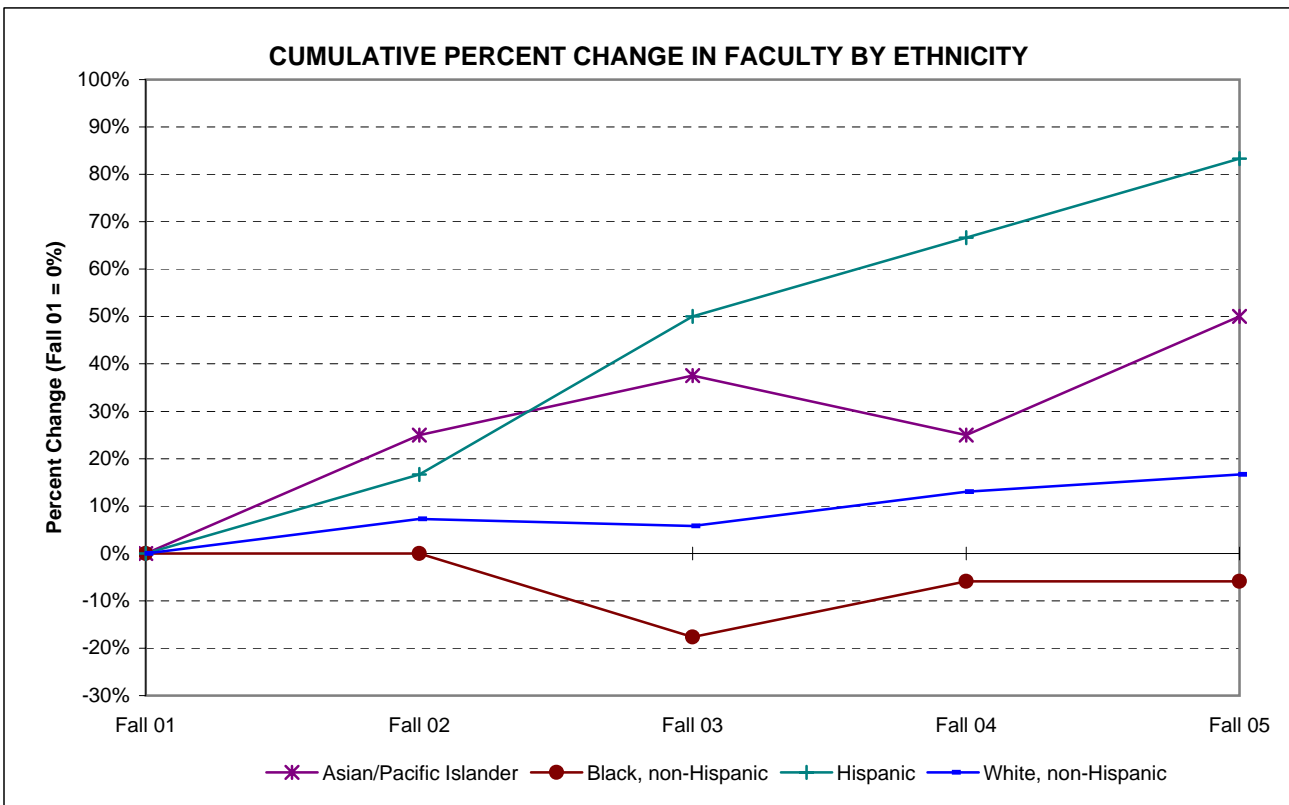
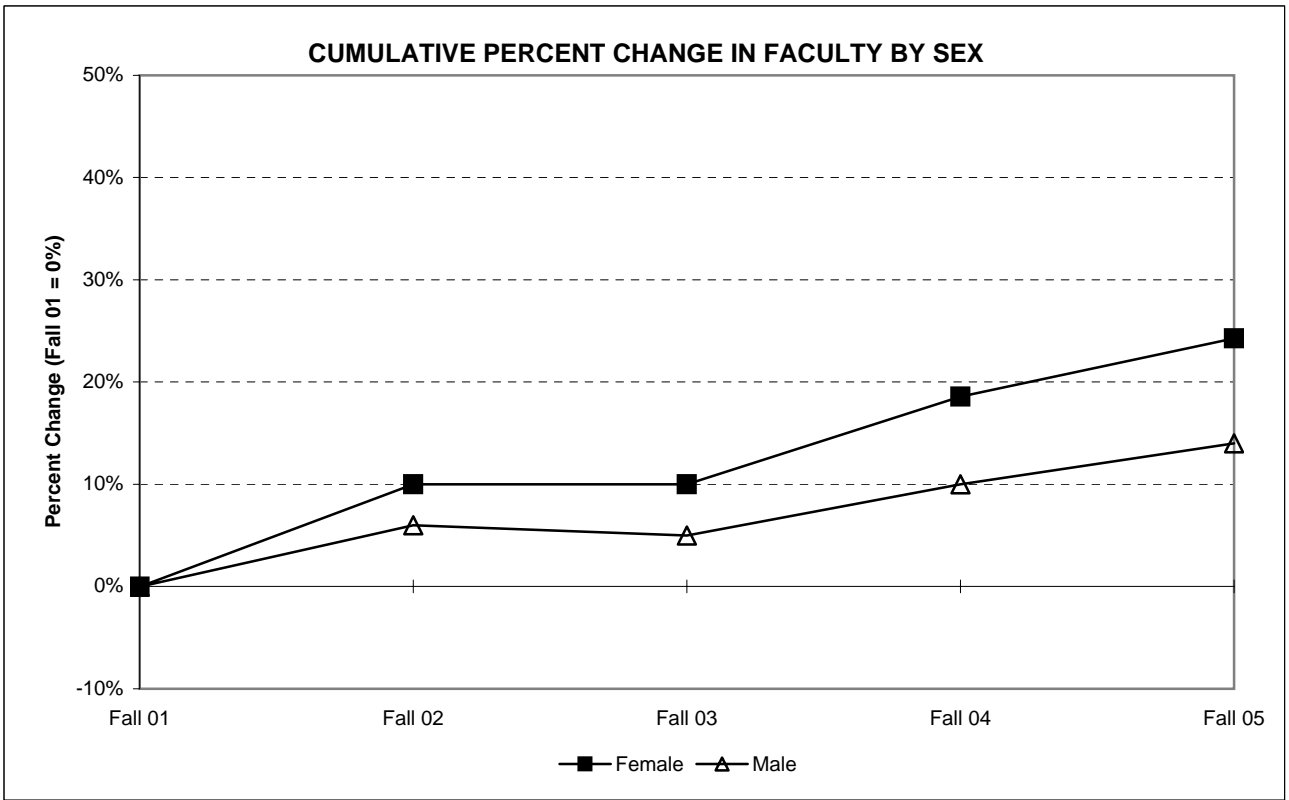


**FACULTY BY SEX  
FALL 2001 TO FALL 2005**

	Fall 2001		Fall 2002		Fall 2003		Fall 2004		Fall 2005		Percent Change 01 to 05	Percent Change 04 to 05
	No.	Pct.	No.	Pct.	No.	Pct.	No.	Pct.	No.	Pct.		
Female	70	41.2%	77	42.1%	77	42.3%	83	43.0%	87	43.3%	24.3%	4.8%
Male	100	58.8%	106	57.9%	105	57.7%	110	57.0%	114	56.7%	14.0%	3.6%
Total	170		183		182		193		201		18.2%	4.1%

**FACULTY BY ETHNICITY  
FALL 2001 TO FALL 2005**

	Fall 2001		Fall 2002		Fall 2003		Fall 2004		Fall 2005		Percent Change 01 to 05	Percent Change 04 to 05
	No.	Pct.	No.	Pct.	No.	Pct.	No.	Pct.	No.	Pct.		
Amer. Indian/Alaskan Nat.	0	0.0%	0	0.0%	0	0.0%	0	0.0%	0	0.0%	N/A	N/A
Asian/Pacific Islander	8	4.7%	10	5.5%	11	6.0%	10	5.2%	12	6.0%	50.0%	20.0%
Black, non-Hispanic	17	10.0%	17	9.3%	14	7.7%	16	8.3%	16	8.0%	-5.9%	0.0%
Hispanic	6	3.5%	7	3.8%	9	4.9%	10	5.2%	11	5.5%	83.3%	10.0%
White, non-Hispanic	138	81.2%	148	80.9%	146	80.2%	156	80.8%	161	80.1%	16.7%	3.2%
Missing	1	0.6%	1	0.5%	2	1.1%	1	0.5%	1	0.5%	0.0%	0.0%
Total	170		183		182		193		201		18.2%	4.1%



**FACULTY BY SCHOOL OR DIVISION AND RANK  
FALL 2001 TO FALL 2005**

	Fall 2001		Fall 2002		Fall 2003		Fall 2004		Fall 2005		Percent Change 01 to 05	Percent Change 04 to 05
	No.	Pct.	No.	Pct.	No.	Pct.	No.	Pct.	No.	Pct.		
SAB												
Professor	6	3.5%	6	3.3%	6	3.3%	5	2.6%	6	3.0%	0.0%	20.0%
Associate Professor	14	8.2%	14	7.7%	14	7.7%	14	7.3%	15	7.5%	7.1%	7.1%
Assistant Professor	10	5.9%	10	5.5%	9	4.9%	11	5.7%	10	5.0%	0.0%	-9.1%
<i>Sub-Total SAB</i>	30	17.6%	30	16.4%	29	15.9%	30	15.5%	31	15.4%	3.3%	3.3%
AIS												
Professor	13	7.6%	15	8.2%	14	7.7%	16	8.3%	16	8.0%	23.1%	0.0%
Associate Professor	11	6.5%	13	7.1%	12	6.6%	13	6.7%	14	7.0%	27.3%	7.7%
Assistant Professor	7	4.1%	10	5.5%	10	5.5%	10	5.2%	10	5.0%	42.9%	0.0%
<i>Sub-Total AIS</i>	31	18.2%	38	20.8%	36	19.8%	39	20.2%	40	19.9%	29.0%	2.6%
CA												
Professor	11	6.5%	11	6.0%	10	5.5%	9	4.7%	9	4.5%	-18.2%	0.0%
Associate Professor	7	4.1%	7	3.8%	7	3.8%	10	5.2%	9	4.5%	28.6%	-10.0%
Assistant Professor	8	4.7%	13	7.1%	12	6.6%	13	6.7%	17	8.5%	112.5%	30.8%
<i>Sub-Total CA</i>	26	15.3%	31	16.9%	29	15.9%	32	16.6%	35	17.4%	34.6%	9.4%
SSHS												
Professor	10	5.9%	16	8.7%	18	9.9%	20	10.4%	20	10.0%	100.0%	0.0%
Associate Professor	12	7.1%	13	7.1%	12	6.6%	10	5.2%	9	4.5%	-25.0%	-10.0%
Assistant Professor	10	5.9%	12	6.6%	11	6.0%	11	5.7%	15	7.5%	50.0%	36.4%
<i>Sub-Total SSHS</i>	32	18.8%	41	22.4%	41	22.5%	41	21.2%	44	21.9%	37.5%	7.3%
TAS												
Professor	17	10.0%	16	8.7%	16	8.8%	17	8.8%	16	8.0%	-5.9%	-5.9%
Associate Professor	6	3.5%	9	4.9%	11	6.0%	11	5.7%	10	5.0%	66.7%	-9.1%
Assistant Professor	9	5.3%	10	5.5%	12	6.6%	14	7.3%	16	8.0%	77.8%	14.3%
<i>Sub-Total TAS</i>	32	18.8%	35	19.1%	39	21.4%	42	21.8%	42	20.9%	31.3%	0.0%
DBS												
Professor	7	4.1%	--	--	--	--	--	--	--	--	N/A	N/A
Associate Professor	2	1.2%	--	--	--	--	--	--	--	--	N/A	N/A
Assistant Professor	2	1.2%	--	--	--	--	--	--	--	--	N/A	N/A
<i>Sub-Total DBS</i>	11	6.5%	--	--	--	--	--	--	--	--	N/A	N/A
Library	8	4.7%	8	4.4%	8	4.4%	9	4.7%	9	4.5%	12.5%	0.0%
<b>Total</b>	<b>170</b>		<b>183</b>		<b>182</b>		<b>193</b>		<b>201</b>		<b>18.2%</b>	<b>4.1%</b>

**FACULTY BY SCHOOL OR DIVISION AND SEX, FALL 2001 TO FALL 2005**

		Fall 2001		Fall 2002		Fall 2003		Fall 2004		Fall 2005		Pct. Chg.	Pct. Chg.
		No.	Pct.	No.	Pct.	No.	Pct.	No.	Pct.	No.	Pct.	01 to 05	04 to 05
SAB	Female	6	3.5%	8	4.4%	8	4.4%	8	4.1%	8	4.0%	33.3%	0.0%
	Male	24	14.1%	22	12.0%	21	11.5%	22	11.4%	23	11.4%	-4.2%	4.5%
AIS	Female	12	7.1%	17	9.3%	16	8.8%	18	9.3%	19	9.5%	58.3%	5.6%
	Male	19	11.2%	21	11.5%	20	11.0%	21	10.9%	21	10.4%	10.5%	0.0%
CA	Female	11	6.5%	16	8.7%	15	8.2%	17	8.8%	19	9.5%	72.7%	11.8%
	Male	15	8.8%	15	8.2%	14	7.7%	15	7.8%	16	8.0%	6.7%	6.7%
SSHS	Female	16	9.4%	21	11.5%	21	11.5%	21	10.9%	22	10.9%	37.5%	4.8%
	Male	16	9.4%	20	10.9%	20	11.0%	20	10.4%	22	10.9%	37.5%	10.0%
TAS	Female	10	5.9%	8	4.4%	10	5.5%	11	5.7%	11	5.5%	10.0%	0.0%
	Male	22	12.9%	27	14.8%	29	15.9%	31	16.1%	31	15.4%	40.9%	0.0%
DBS	Female	8	4.7%	--	--	--	--	--	--	--	--	N/A	N/A
	Male	3	1.8%	--	--	--	--	--	--	--	--	N/A	N/A
Library	Female	7	4.1%	7	3.8%	7	3.8%	8	4.1%	8	4.0%	14.3%	0.0%
	Male	1	0.6%	1	0.5%	1	0.5%	1	0.5%	1	0.5%	0.0%	0.0%
Total		170		183		182		193		201		18.2%	4.1%

**FACULTY BY SCHOOL OR DIVISION AND ETHNICITY, FALL 2001 TO FALL 2005**

		Fall 2001		Fall 2002		Fall 2003		Fall 2004		Fall 2005		Pct. Chg.	Pct. Chg.
		No.	Pct.	No.	Pct.	No.	Pct.	No.	Pct.	No.	Pct.	01 to 05	04 to 05
SAB	Asian	2	1.2%	3	1.6%	3	1.6%	2	1.0%	3	1.5%	50.0%	50.0%
	Black	3	1.8%	4	2.2%	3	1.6%	4	2.1%	4	2.0%	33.3%	0.0%
	Hispanic	0	0.0%	0	0.0%	0	0.0%	0	0.0%	0	0.0%	N/A	N/A
	White	25	14.7%	23	12.6%	23	12.6%	24	12.4%	24	11.9%	-4.0%	0.0%
AIS	Asian	2	1.2%	2	1.1%	2	1.1%	2	1.0%	2	1.0%	0.0%	0.0%
	Black	1	0.6%	1	0.5%	1	0.5%	1	0.5%	1	0.5%	0.0%	0.0%
	Hispanic	3	1.8%	3	1.6%	3	1.6%	3	1.6%	3	1.5%	0.0%	0.0%
	White	25	14.7%	32	17.5%	30	16.5%	32	16.6%	33	16.4%	32.0%	3.1%
CA	Asian	1	0.6%	2	1.1%	2	1.1%	2	1.0%	3	1.5%	200.0%	50.0%
	Black	4	2.4%	4	2.2%	3	1.6%	4	2.1%	4	2.0%	0.0%	0.0%
	Hispanic	1	0.6%	1	0.5%	3	1.6%	3	1.6%	3	1.5%	200.0%	0.0%
	White	20	11.8%	24	13.1%	21	11.5%	23	11.9%	25	12.4%	25.0%	8.7%
SSHS	Asian	1	0.6%	1	0.5%	1	0.5%	1	0.5%	1	0.5%	0.0%	0.0%
	Black	5	2.9%	5	2.7%	5	2.7%	5	2.6%	5	2.5%	0.0%	0.0%
	Hispanic	2	1.2%	3	1.6%	3	1.6%	4	2.1%	4	2.0%	100.0%	0.0%
	White	23	13.5%	32	17.5%	31	17.0%	31	16.1%	34	16.9%	47.8%	9.7%
TAS	Asian	2	1.2%	2	1.1%	3	1.6%	3	1.6%	3	1.5%	50.0%	0.0%
	Black	2	1.2%	2	1.1%	1	0.5%	1	0.5%	1	0.5%	-50.0%	0.0%
	Hispanic	0	0.0%	0	0.0%	0	0.0%	0	0.0%	1	0.5%	N/A	N/A
	White	28	16.5%	31	16.9%	35	19.2%	38	19.7%	37	18.4%	32.1%	-2.6%
DBS	Asian	0	0.0%	--	--	--	--	--	--	--	--	N/A	N/A
	Black	0	0.0%	--	--	--	--	--	--	--	--	N/A	N/A
	Hispanic	0	0.0%	--	--	--	--	--	--	--	--	N/A	N/A
	White	11	6.5%	--	--	--	--	--	--	--	--	N/A	N/A
Library	Asian	0	0.0%	0	0.0%	0	0.0%	0	0.0%	0	0.0%	N/A	N/A
	Black	2	1.2%	1	0.5%	1	0.5%	1	0.5%	1	0.5%	-50.0%	0.0%
	Hispanic	0	0.0%	0	0.0%	0	0.0%	0	0.0%	0	0.0%	N/A	N/A
	White	6	3.5%	6	3.3%	6	3.3%	8	4.1%	8	4.0%	33.3%	0.0%
	Missing	1	0.6%	1	0.5%	2	1.1%	1	0.5%	1	0.5%	N/A	0.0%
Total		170		183		182		193		201		18.2%	4.1%

**FACULTY BY RANK AND SEX, FALL 2001 TO FALL 2005**

		Fall 2001		Fall 2002		Fall 2003		Fall 2004		Fall 2005		Pct. Chg. 01 to 05	Pct. Chg. 04 to 05
		No.	Pct.	No.	Pct.	No.	Pct.	No.	Pct.	No.	Pct.		
Prof.	Female	23	13.5%	22	12.0%	21	11.5%	20	10.4%	21	10.4%	-8.7%	5.0%
	Male	41	24.1%	42	23.0%	43	23.6%	47	24.4%	46	22.9%	12.2%	-2.1%
Assoc. Prof.	Female	16	9.4%	18	9.8%	18	9.9%	23	11.9%	21	10.4%	31.3%	-8.7%
	Male	36	21.2%	38	20.8%	38	20.9%	35	18.1%	36	17.9%	0.0%	2.9%
Asst. Prof.	Female	24	14.1%	30	16.4%	31	17.0%	32	16.6%	37	18.4%	54.2%	15.6%
	Male	22	12.9%	25	13.7%	23	12.6%	27	14.0%	31	15.4%	40.9%	14.8%
Libr.	Female	7	4.1%	7	3.8%	7	3.8%	8	4.1%	8	4.0%	14.3%	0.0%
	Male	1	0.6%	1	0.5%	1	0.5%	1	0.5%	1	0.5%	0.0%	0.0%
Total		170		183		182		193		201		18.2%	4.1%

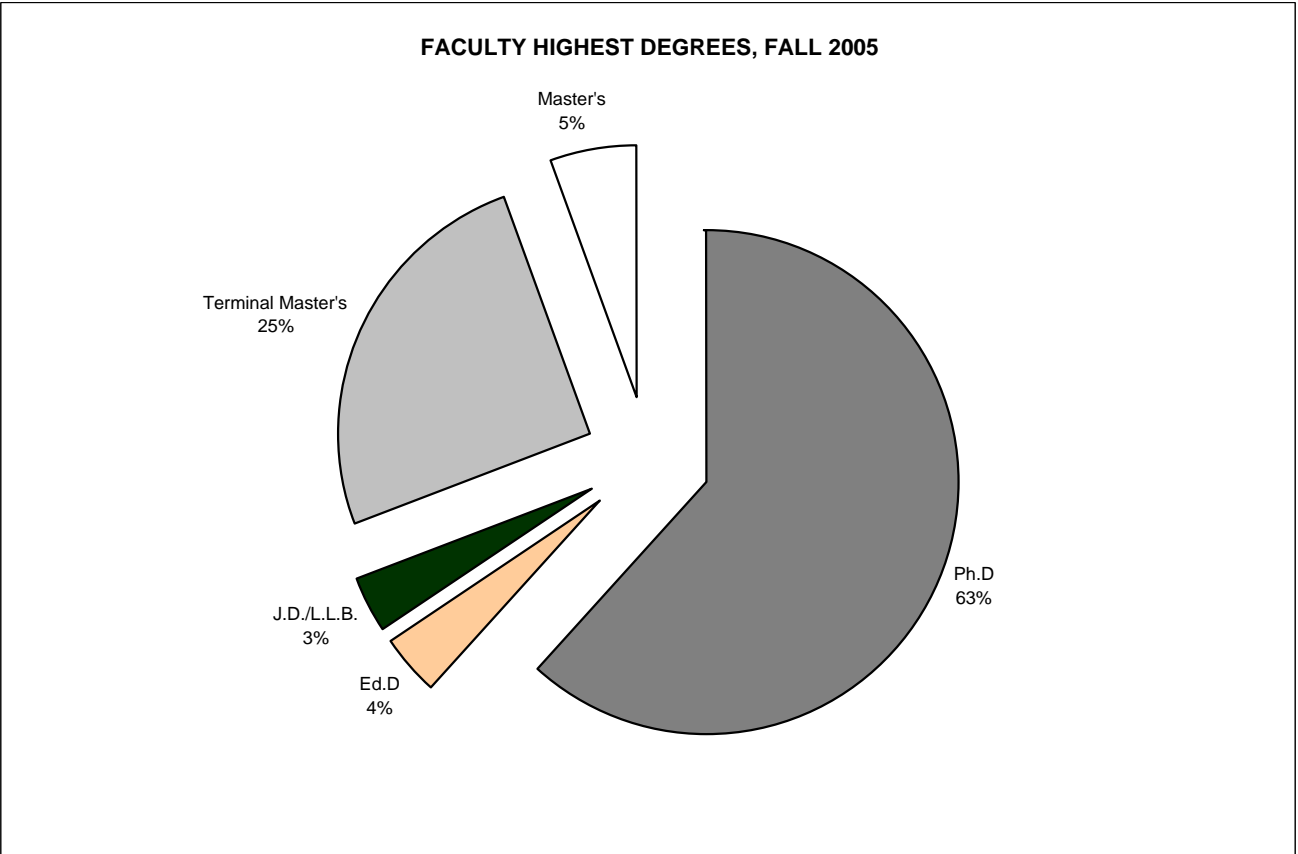
**FACULTY BY RANK AND ETHNICITY, FALL 2001 TO FALL 2005**

		Fall 2001		Fall 2002		Fall 2003		Fall 2004		Fall 2005		Pct. Chg. 01 to 05	Pct. Chg. 04 to 05
		No.	Pct.	No.	Pct.	No.	Pct.	No.	Pct.	No.	Pct.		
Prof.	Asian	2	1.2%	3	1.6%	4	2.2%	4	2.1%	4	2.0%	100.0%	0.0%
	Black	2	1.2%	2	1.1%	3	1.6%	3	1.6%	3	1.5%	50.0%	0.0%
	Hispanic	1	0.6%	2	1.1%	2	1.1%	2	1.0%	3	1.5%	0.0%	50.0%
	White	59	34.7%	57	31.1%	55	30.2%	58	30.1%	57	28.4%	-3.4%	-1.7%
Assoc. Prof.	Asian	3	1.8%	3	1.6%	3	1.6%	3	1.6%	4	2.0%	33.3%	33.3%
	Black	6	3.5%	8	4.4%	6	3.3%	7	3.6%	7	3.5%	16.7%	0.0%
	Hispanic	3	1.8%	2	1.1%	2	1.1%	3	1.6%	3	1.5%	0.0%	0.0%
	White	40	23.5%	43	23.5%	45	24.7%	45	23.3%	43	21.4%	7.5%	-4.4%
Asst. Prof.	Asian	3	1.8%	4	2.2%	4	2.2%	3	1.6%	4	2.0%	33.3%	33.3%
	Black	7	4.1%	6	3.3%	4	2.2%	5	2.6%	5	2.5%	-28.6%	0.0%
	Hispanic	2	1.2%	3	1.6%	5	2.7%	5	2.6%	5	2.5%	150.0%	0.0%
	White	33	19.4%	42	23.0%	40	22.0%	45	23.3%	53	26.4%	60.6%	17.8%
Libr.	Asian	0	0.0%	0	0.0%	0	0.0%	0	0.0%	0	0.0%	N/A	N/A
	Black	2	1.2%	1	0.5%	1	0.5%	1	0.5%	1	0.5%	-50.0%	0.0%
	Hispanic	0	0.0%	0	0.0%	0	0.0%	0	0.0%	0	0.0%	N/A	N/A
	White	6	3.5%	6	3.3%	6	3.3%	8	4.1%	8	4.0%	33.3%	0.0%
Missing		1	0.6%	1	0.5%	2	1.1%	1	0.5%	1	0.5%	0.0%	0.0%
Total		170		183		182		193		201		18.2%	4.1%



**FACULTY DEGREES BY SEX, FALL 2005**

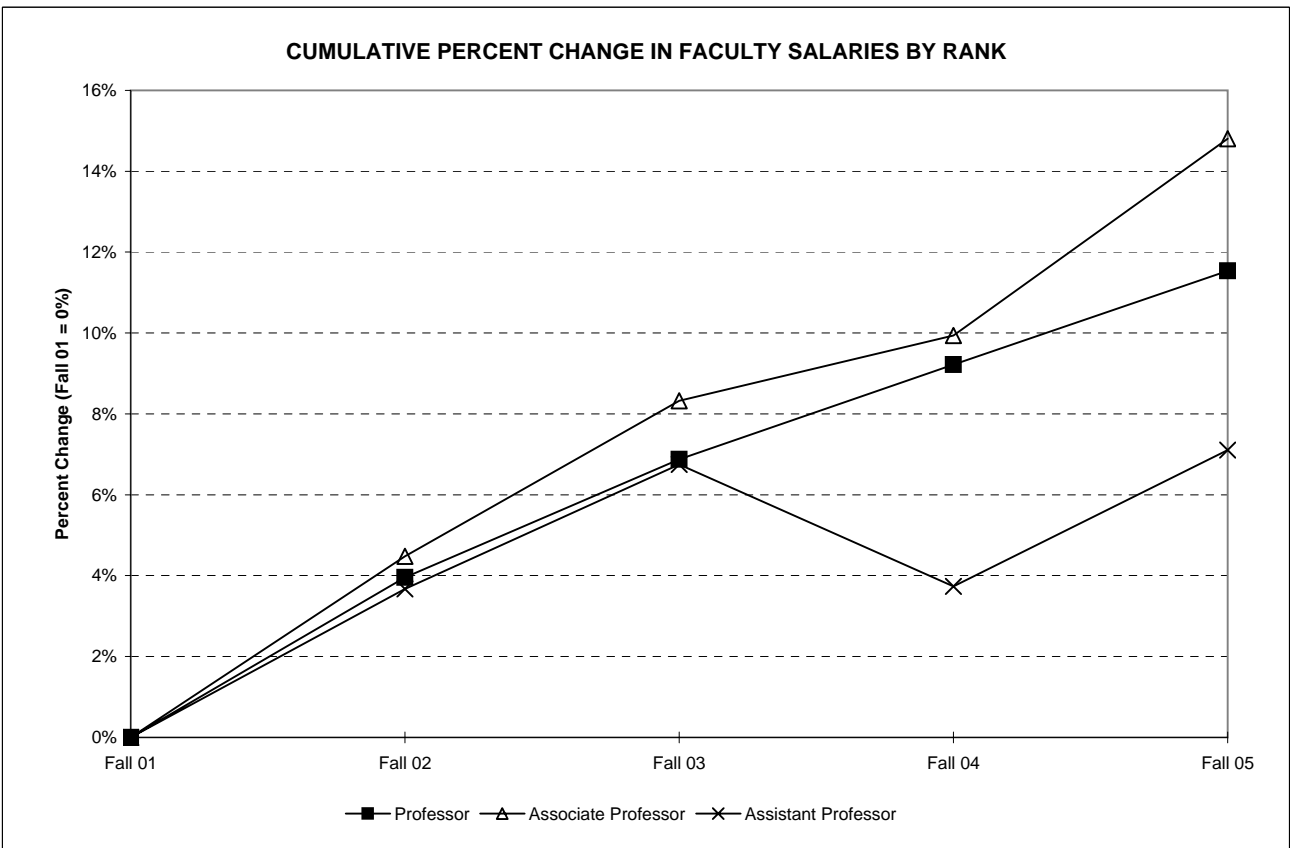
Highest Degree	Female		Male		Totals	
	Number	Column Percent	Number	Column Percent	Number	Column Percent
Ph.D	47	54%	77	68%	124	61.7%
Ed.D	3	3%	5	4%	8	4.0%
J.D./L.L.B.	3	3%	4	4%	7	3.5%
Terminal Master's	<u>28</u>	<u>32%</u>	<u>23</u>	<u>20%</u>	<u>51</u>	<u>25.4%</u>
Sub-Total	81	93%	109	96%	190	94.5%
Master's	6	7%	5	4%	11	5.5%
Total	87		114		201	



**AVERAGE ANNUAL FACULTY SALARIES BY RANK, FALL 2001 TO FALL 2005 [1]**

Rank	2001	2002	2003	2004	2005	Percent Change 01 to 05	Percent Change 04 to 05
Professor	\$85,160	\$88,532	\$91,015	\$93,011	\$94,985	11.5%	2.1%
Associate Professor	\$66,381	\$69,352	\$71,909	\$72,976	\$76,207	14.8%	4.4%
Assistant Professor	\$52,120	\$54,033	\$55,638	\$54,067	\$55,825	7.1%	3.3%
Overall Average	\$68,385	\$71,414	\$73,810	\$74,019	\$75,322	10.1%	1.8%
Average Fringe Benefit	\$17,677	\$17,246	\$21,553	\$21,577	\$24,668	39.5%	14.3%

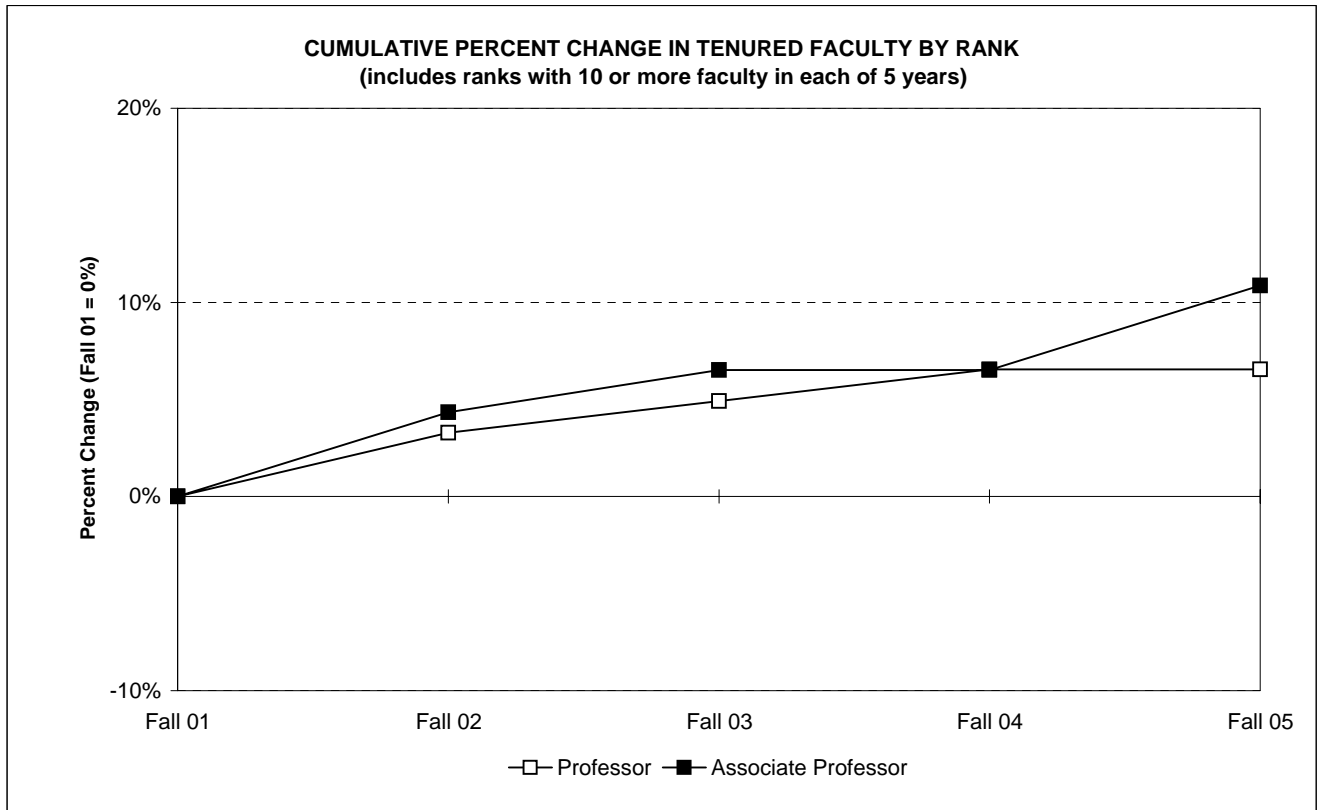
[1] Source: Annual American Association of University Professors (AAUP) Faculty Compensation Survey



**TENURED FACULTY BY RANK  
FALL 2001 TO FALL 2005**

	Fall 2001		Fall 2002		Fall 2003		Fall 2004		Fall 2005		Percent Change 01 to 05	Percent Change 04 to 05
	No.	Pct.	No.	Pct.	No.	Pct.	No.	Pct.	No.	Pct.		
Professor	61	46.6%	63	48.8%	64	48.1%	65	47.1%	65	46.4%	6.6%	0.0%
Associate Professor	46	35.1%	48	37.2%	49	36.8%	49	35.5%	51	36.4%	10.9%	4.1%
Sub-Total	107	81.7%	111	86.0%	113	85.0%	114	82.6%	116	82.9%	8.4%	1.8%
Assistant Professor	11	8.4%	6	4.7%	9	6.8%	11	8.0%	10	7.1%	-9.1%	-9.1%
Librarian	4	3.1%	4	3.1%	3	2.3%	5	3.6%	6	4.3%	50.0%	20.0%
Sub-Total	15	11.5%	10	7.8%	12	9.0%	16	11.6%	16	11.4%	6.7%	0.0%
Total	122		121		125		130		132		8.2%	1.5%
Tenured Faculty Serving in Administrative Positions [1]	9	6.9%	8	6.2%	8	6.0%	8	5.8%	8	5.7%	-11.1%	0.0%
<b>GRAND TOTAL</b>	<b>131</b>		<b>129</b>		<b>133</b>		<b>138</b>		<b>140</b>		<b>6.9%</b>	<b>1.4%</b>

[1] Fall 2005 administrative positions tenured=7, not tenured=1.

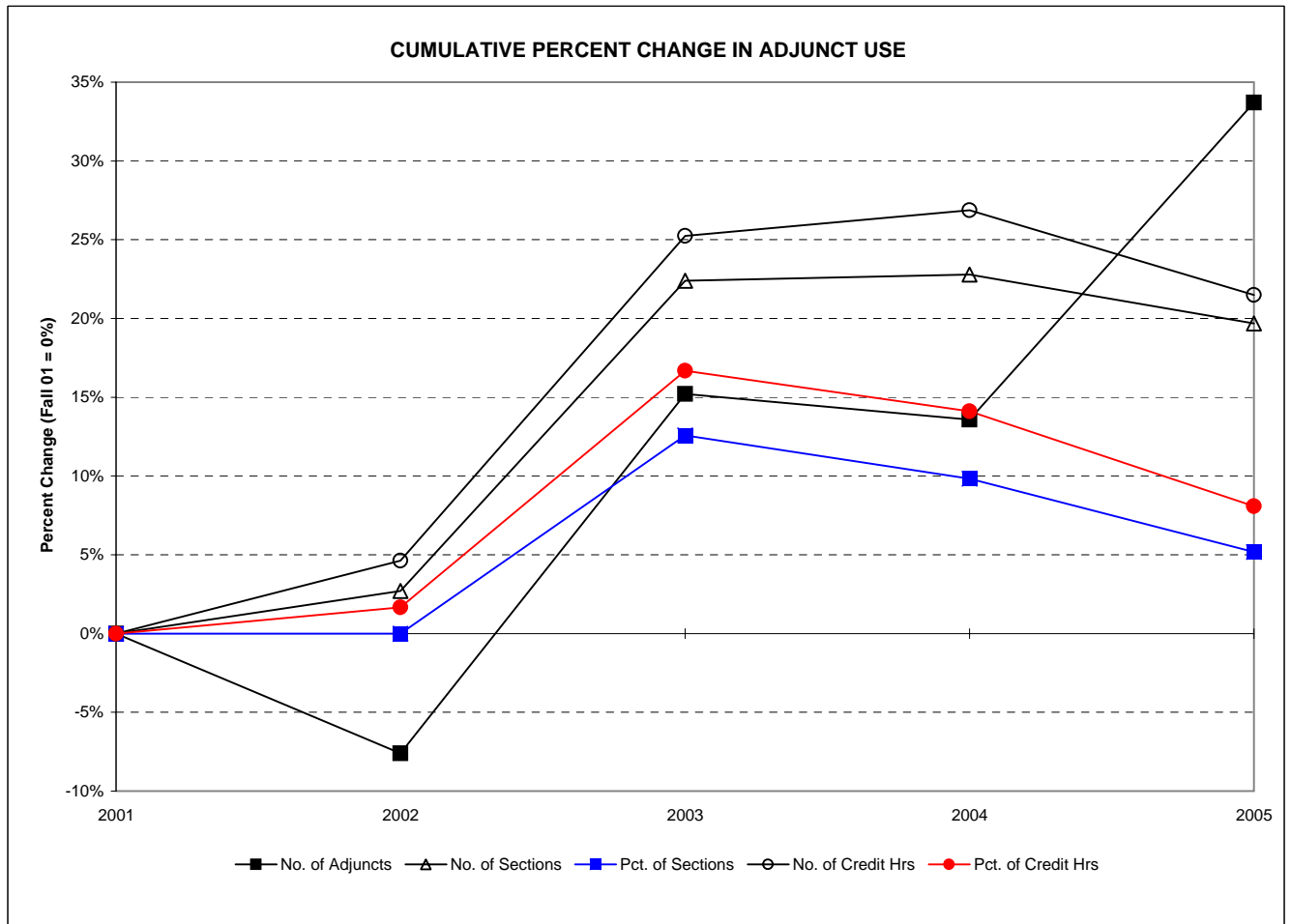


TRENDS IN ADJUNCT USE, FALL 2001 TO FALL 2005

	Fall 2001	Fall 2002	Fall 2003	Fall 2004	Fall 2005	Pct. Chg. 01 to 05	Pct. Chg. 04 to 05
Number of Adjuncts [1]	184	170	212	209	246	33.7%	17.7%
Sections Taught by Adjuncts [2]	259	266	317	318	310	19.7%	-2.5%
Total Sections [2]	848	871	922	948	965	13.8%	1.8%
Percent Sections Taught by Adjuncts	30.5%	30.5%	34.4%	33.5%	32.1%	5.2%	-4.2%
Credit Hours Taught by Adjuncts	800	837	1,002	1,015	972	21.5%	-4.2%
Total Teaching Credit Hours	2,779	2,860	2,983	3,090	3,124	12.4%	1.1%
Percent Teaching Credit Hours Taught by Adjuncts	28.8%	29.3%	33.6%	32.8%	31.1%	8.1%	-5.3%

[1] Excludes faculty overloads, professional staff who teach, and Visiting Scholars.

[2] Excludes independent studies, co-ops, internships without weekly class meetings, sections with 0 beginning enrollment, National Student Exchange sections, and sections offered to students abroad.



**ADJUNCT FACULTY BY SCHOOL, FALL 2001 TO FALL 2005 <sup>[1]</sup>**

School / Unit	Fall 2001 No.	Fall 2002 No.	Fall 2003 No.	Fall 2004 No.	Fall 2005 No.	Percent Change 01 to 05	Percent Change 04 to 05
<b>AIS</b>							
# Adjuncts	19	19	27	30	57	200.0%	90.0%
# Sections	36	33	44	49	70	94.4%	42.9%
Total Sections	140	154	165	177	210	50.0%	18.6%
% Adj Taught	25.7%	21.4%	26.7%	27.7%	33.3%	29.6%	20.4%
<b>SAB</b>							
# Adjuncts	25	22	28	27	25	0.0%	-7.4%
# Sections	30	31	37	36	32	6.7%	-11.1%
Total Sections	119	126	123	130	123	3.4%	-5.4%
% Adj Taught	25.2%	24.6%	30.1%	27.7%	26.0%	3.2%	-6.1%
<b>CA</b>							
# Adjuncts	58	59	63	64	63	8.6%	-1.6%
# Sections	85	90	96	103	88	3.5%	-14.6%
Total Sections	157	169	176	190	184	17.2%	-3.2%
% Adj Taught	54.1%	53.3%	54.5%	54.2%	47.8%	-11.7%	-11.8%
<b>SSHS</b>							
# Adjuncts	39	27	37	39	45	15.4%	15.4%
# Sections	45	41	54	57	56	24.4%	-1.8%
Total Sections	150	164	167	168	176	17.3%	4.8%
% Adj Taught	30.0%	25.0%	32.3%	33.9%	31.8%	6.1%	-6.2%
<b>TAS</b>							
# Adjuncts	11	18	29	22	28	154.5%	27.3%
# Sections	17	29	39	31	32	88.2%	3.2%
Total Sections	132	136	163	162	182	37.9%	12.3%
% Adj Taught	12.9%	21.3%	23.9%	19.1%	17.6%	36.5%	-8.1%
<b>Interdisciplinary</b>							
# Adjuncts	4	15	14	13	12	600.0%	-7.7%
# Sections	3	27	26	25	12	966.7%	-52.0%
Total Sections	78	76	80	79	51	133.3%	-35.4%
% Adj Taught	3.8%	35.5%	32.5%	31.6%	23.5%	511.8%	-25.6%
<b>Graduate/Prof.</b>							
# Adjuncts	15	3	7	8	10	-33.3%	25.0%
# Sections	18	4	10	8	10	-44.4%	25.0%
Total Sections	22	24	27	24	21	-4.5%	-12.5%
% Adj Taught	81.8%	16.7%	37.0%	33.3%	47.6%	-41.8%	42.9%
<b>CAS [2]</b>							
# Adjuncts	13	7	7	6	6	-53.8%	0.0%
# Sections	25	11	11	9	10	-60.0%	11.1%
Total Sections	50	22	21	18	18	-64.0%	0.0%
% Adj Taught	50.0%	50.0%	52.4%	50.0%	55.6%	11.1%	11.1%

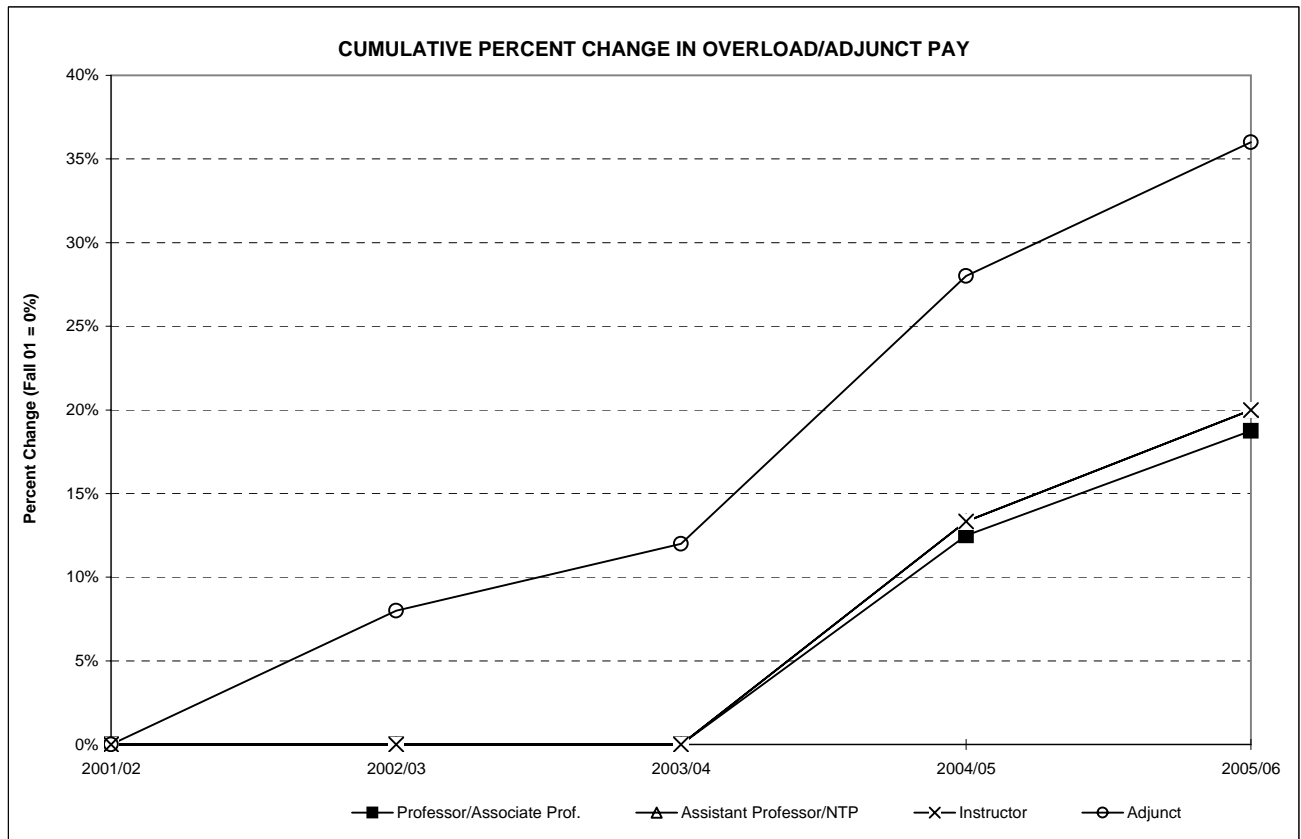
[1] The number of adjuncts does not include Visiting Scholars, faculty in overload, or professional staff. The number of sections does not include co-op, independent studies, internship, fieldwork, NSE, or study abroad courses.

[2] Fall 2000 courses taught in DBS. As of fall 2001 courses offered by the Center for Academic Success.

**ADJUNCT AND OVERLOAD RATE OF PAY PER CREDIT**

	Acad. Year 2001-02	Acad. Year 2002-03	Acad. Year 2003-04	Acad. Year 2004-05	Acad. Year 2005-06	Percent Change 01/02 to 05/06	Percent Change 04/05 to 05/06
Professor/Associate Prof.	\$800	\$800	\$800	\$900	\$950	18.8%	5.6%
Assistant Professor/NTP [1]	\$750	\$750	\$750	\$850	\$900	20.0%	5.9%
Instructor	\$750	\$750	\$750	\$850	\$900	20.0%	5.9%
Adjunct	\$625	\$675	\$700	\$800	\$850	36.0%	6.3%

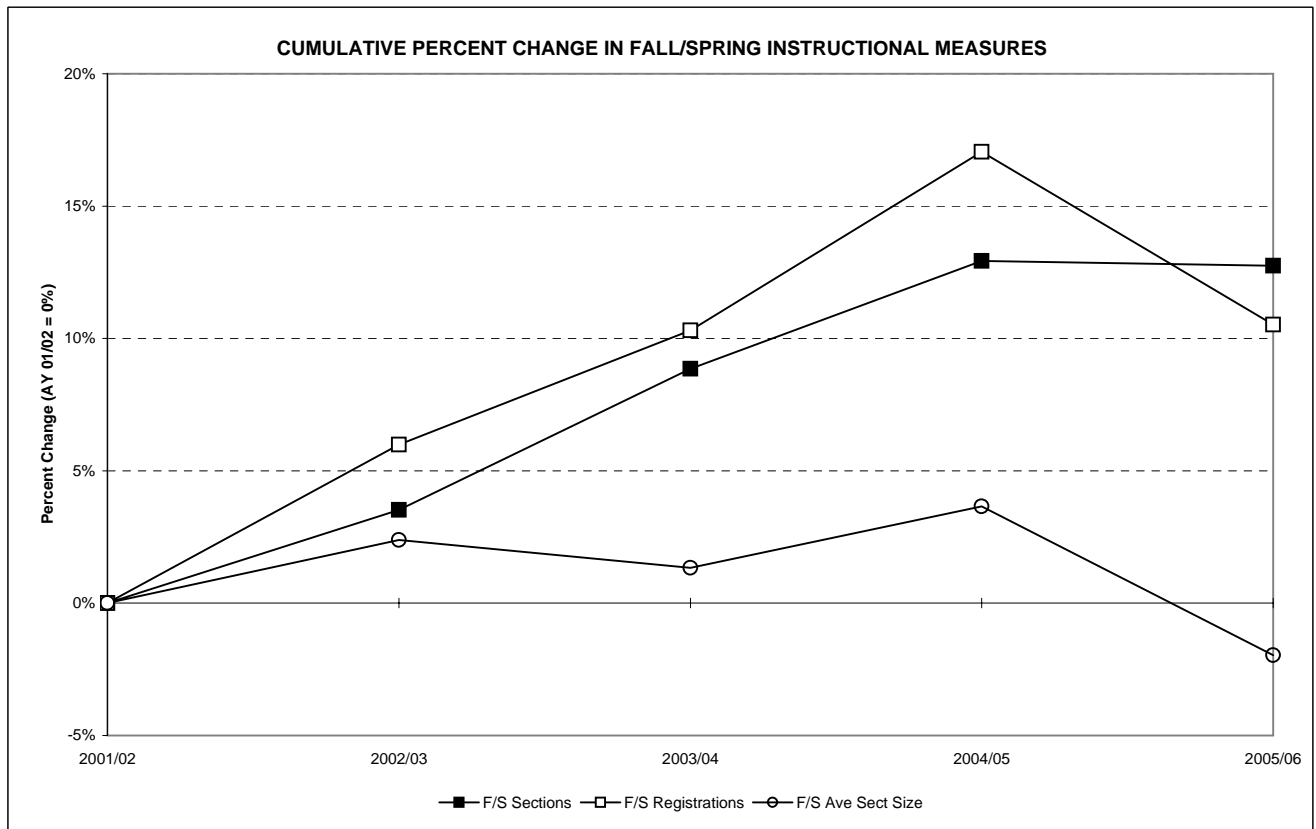
[1] NTP = Non-Teaching Professional.



**FALL AND SPRING SEMESTER INSTRUCTIONAL STATISTICS [1]  
ACADEMIC YEAR 2001-02 TO ACADEMIC YEAR 2005-06**

Instruction	2001-02	2002-03	2003-04	2004-05	2005-06	Percent Change	Percent Change
	Number	Number	Number	Number	Number	01/02 to 05/06	04/05 to 05/06
Fall Sections	848	871	922	948	965	13.8%	1.8%
Spring Sections	800	835	872	913	893	11.6%	-2.2%
Fall/Spring Sections	1,648	1,706	1,794	1,861	1,858	12.7%	-0.2%
Fall Registrations	18,530	19,542	20,644	21,863	20,836	12.4%	-4.7%
Spring Registrations	17,828	18,995	19,462	20,693	19,347	8.5%	-6.5%
Fall/Spring Registrations	36,358	38,537	40,106	42,556	40,183	10.5%	-5.6%
Fall Average Section Size	21.9	22.4	22.4	23.1	21.6	-1.2%	-6.4%
Spring Average Section Size	22.3	22.7	22.3	22.7	21.7	-2.8%	-4.4%
Fall/Spring Average	22.1	22.6	22.4	22.9	21.6	-2.0%	-5.4%

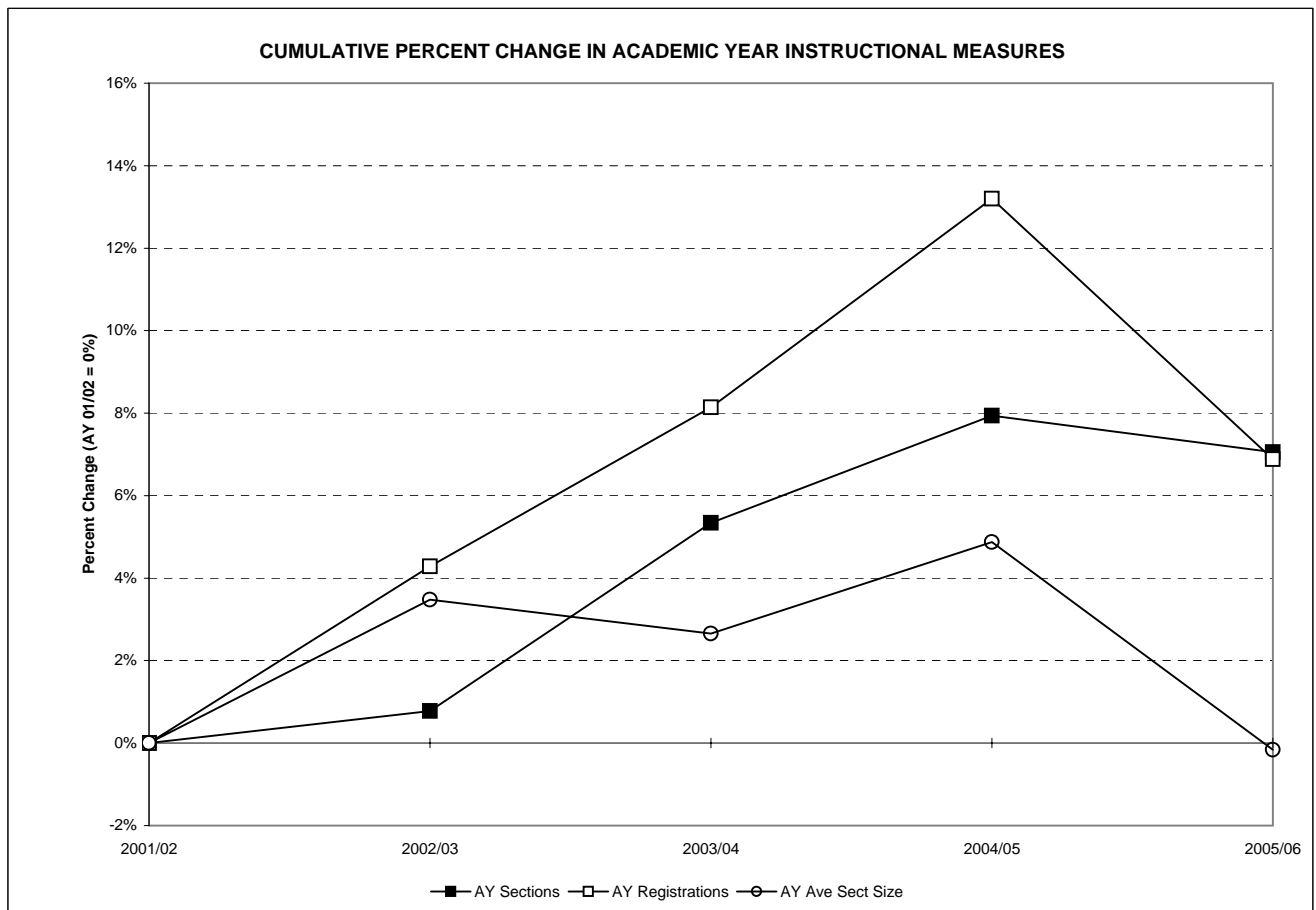
[1] Excludes independent studies, co-ops, internships without weekly class meetings, sections with 0 beginning enrollment, National Student Exchange sections, and sections offered to students abroad.



**TOTAL ACADEMIC YEAR INSTRUCTIONAL STATISTICS [1]  
ACADEMIC YEAR 2001-02 TO ACADEMIC YEAR 2005-06**

Instruction	2001-02	2002-03	2003-04	2004-05	2005-06	Percent Change	Percent Change
	Number	Number	Number	Number	Number	01/02 to 05/06	04/05 to 05/06
Summer Sections	220	194	193	186	167	-24.1%	-10.2%
Winter Sections	60	43	44	34	39	-35.0%	14.7%
Fall/Spring Sections	1,648	1,706	1,794	1,861	1,858	12.7%	-0.2%
Total AY Sections	1,928	1,943	2,031	2,081	2,064	7.1%	-0.8%
Summer Registrations	2,964	2,765	2,722	2,517	2,328	-21.5%	-7.5%
Winter Registrations	983	730	758	552	567	-42.3%	2.7%
Fall/Spring Registrations	36,358	38,537	40,106	42,556	40,183	10.5%	-5.6%
Total AY Registrations	40,305	42,032	43,586	45,625	43,078	6.9%	-5.6%
Summer Ave. Section Size	13.5	14.3	14.1	13.5	13.9	3.5%	3.0%
Winter Ave. Section Size	16.4	17.0	17.2	16.2	14.5	-11.3%	-10.5%
Fall/Spring Ave. Section Size	22.1	22.6	22.4	22.9	21.6	-2.0%	-5.4%
Total AY Average	20.9	21.6	21.5	21.9	20.9	-0.2%	-4.8%

[1] Excludes independent studies, co-ops, internships without weekly class meetings, sections with 0 beginning enrollment, National Student Exchange sections, and sections offered to students abroad.





**FALL AND SPRING SEMESTER SECTIONS BY SCHOOL [1]  
ACADEMIC YEAR 2001-02 TO ACADEMIC YEAR 2005-06**

Schools/Divisions	2001-02		2002-03		2003-04		2004-05		2005-06		Percent Change 01/02 to 05/06	Percent Change 04/05 to 05/06
	No. of Sections	Pct. of All Sections	No. of Sections	Pct. of All Sections	No. of Sections	Pct. of All Sections	No. of Sections	Pct. of All Sections	No. of Sections	Pct. of All Sections		
American & International Studies												
Fall	140	16.5%	154	17.7%	169	18.3%	177	18.7%	210	21.8%	50.0%	18.6%
Spring	136	17.0%	148	17.7%	162	18.6%	184	20.2%	204	22.8%	50.0%	10.9%
Total AY	276	16.7%	302	17.7%	331	18.5%	361	19.4%	414	22.3%	50.0%	14.7%
Administration & Business												
Fall	119	14.0%	126	14.5%	123	13.3%	130	13.7%	123	12.7%	3.4%	-5.4%
Spring	121	15.1%	123	14.7%	126	14.4%	126	13.8%	124	13.9%	2.5%	-1.6%
Total AY	240	14.6%	249	14.6%	249	13.9%	256	13.8%	247	13.3%	2.9%	-3.5%
Contemporary Arts												
Fall	157	18.5%	169	19.4%	176	19.1%	190	20.0%	184	19.1%	17.2%	-3.2%
Spring	164	20.5%	174	20.8%	178	20.4%	182	19.9%	170	19.0%	3.7%	-6.6%
Total AY	321	19.5%	343	20.1%	354	19.7%	372	20.0%	354	19.1%	10.3%	-4.8%
Social Sci. & Human Services												
Fall	150	17.7%	164	18.8%	167	18.1%	168	17.7%	176	18.2%	17.3%	4.8%
Spring	155	19.4%	166	19.9%	180	20.6%	183	20.0%	177	19.8%	14.2%	-3.3%
Total AY	305	18.5%	330	19.3%	347	19.3%	351	18.9%	353	19.0%	15.7%	0.6%
Theoretical & Applied Science												
Fall	132	15.6%	136	15.6%	160	17.4%	162	17.1%	182	18.9%	37.9%	12.3%
Spring	117	14.6%	134	16.0%	144	16.5%	165	18.1%	177	19.8%	51.3%	7.3%
Total AY	249	15.1%	270	15.8%	304	16.9%	327	17.6%	359	19.3%	44.2%	9.8%
CAS [2]												
Fall	50	5.9%	22	2.5%	21	2.3%	18	1.9%	18	1.9%	-64.0%	0.0%
Spring	35	4.4%	12	1.4%	8	0.9%	5	0.5%	6	0.7%	-82.9%	20.0%
Total AY	85	5.2%	34	2.0%	29	1.6%	23	1.2%	24	1.3%	-71.8%	4.3%
Interdisciplinary Studies												
Fall	78	9.2%	76	8.7%	76	8.2%	79	8.3%	51	5.3%	-34.6%	-35.4%
Spring	50	6.3%	52	6.2%	50	5.7%	47	5.1%	20	2.2%	-60.0%	-57.4%
Total AY	128	7.8%	128	7.5%	126	7.0%	126	6.8%	71	3.8%	-44.5%	-43.7%
Graduate												
Fall	22	2.6%	24	2.8%	30	3.3%	24	2.5%	21	2.2%	-4.5%	-12.5%
Spring	22	2.8%	26	3.1%	24	2.8%	21	2.3%	15	1.7%	-31.8%	-28.6%
Total AY	44	2.7%	50	2.9%	54	3.0%	45	2.4%	36	1.9%	-18.2%	-20.0%
<b>Total College Sections</b>												
Fall	848		871		922		948		965			
Spring	800		835		872		913		893			
Total AY	1,648		1,706		1,794		1,861		1,858			

[1] All counts exclude independent studies, co-ops, internships without weekly class meetings, sections with 0 beginning enrollment, National Student Exchange sections and sections offered to students abroad.

[2] Fall 2000 courses taught in DBS. As of fall 2001 courses offered by the Center for Academic Success.

**FALL AND SPRING SEMESTER REGISTRATIONS BY SCHOOL [1]  
ACADEMIC YEAR 2001-02 TO ACADEMIC YEAR 2005-06**

Schools/Divisions	2001-02		2002-03		2003-04		2004-05		2005-06		Percent Change 01/02 to 05/06	Percent Change 04/05 to 05/06
	No. of Registra- tions	Pct. All Registra- tions	No. of Registra- tions	Pct. All Registra- tions	No. of Registra- tions	Pct. All Registra- tions	No. of Registra- tions	Pct. All Registra- tions	No. of Registra- tions	Pct. All Registra- tions		
American & International Studies												
Fall	3,471	18.7%	4,225	21.6%	4,291	20.8%	4,591	21.0%	5,039	24.2%	45.2%	9.8%
Spring	3,506	19.7%	3,986	21.0%	4,156	21.4%	4,539	21.9%	4,846	25.0%	38.2%	6.8%
Total AY	6,977	19.2%	8,211	21.3%	8,447	21.1%	9,130	21.5%	9,885	24.6%	41.7%	8.3%
Administration & Business												
Fall	2,942	15.9%	2,995	15.3%	3,059	14.8%	3,216	14.7%	3,018	14.5%	2.6%	-6.2%
Spring	3,089	17.3%	3,102	16.3%	3,120	16.0%	3,084	14.9%	3,023	15.6%	-2.1%	-2.0%
Total AY	6,031	16.6%	6,097	15.8%	6,179	15.4%	6,300	14.8%	6,041	15.0%	0.2%	-4.1%
Contemporary Arts												
Fall	2,818	15.2%	2,978	15.2%	3,152	15.3%	3,275	15.0%	2,982	14.3%	5.8%	-8.9%
Spring	2,918	16.4%	3,179	16.7%	3,089	15.9%	3,276	15.8%	3,008	15.5%	3.1%	-8.2%
Total AY	5,736	15.8%	6,157	16.0%	6,241	15.6%	6,551	15.4%	5,990	14.9%	4.4%	-8.6%
Social Sci. & Human Services												
Fall	3,521	19.0%	4,004	20.5%	4,221	20.4%	4,258	19.5%	4,285	20.6%	21.7%	0.6%
Spring	3,821	21.4%	4,209	22.2%	4,538	23.3%	4,499	21.7%	4,213	21.8%	10.3%	-6.4%
Total AY	7,342	20.2%	8,213	21.3%	8,759	21.8%	8,757	20.6%	8,498	21.1%	15.7%	-3.0%
Theoretical & Applied Science												
Fall	2,853	15.4%	3,157	16.2%	3,741	18.1%	4,149	19.0%	3,933	18.9%	37.9%	-5.2%
Spring	2,601	14.6%	3,068	16.2%	3,254	16.7%	3,847	18.6%	3,655	18.9%	40.5%	-5.0%
Total AY	5,454	15.0%	6,225	16.2%	6,995	17.4%	7,996	18.8%	7,588	18.9%	39.1%	-5.1%
CAS [2]												
Fall	1,197	6.5%	372	1.9%	371	1.8%	344	1.6%	309	1.5%	-74.2%	-10.2%
Spring	676	3.8%	141	0.7%	91	0.5%	88	0.4%	87	0.4%	-87.1%	-1.1%
Total AY	1,873	5.2%	513	1.3%	462	1.2%	432	1.0%	396	1.0%	-78.9%	-8.3%
Interdisciplinary Studies												
Fall	1,372	7.4%	1,417	7.3%	1,427	6.9%	1,543	7.1%	1,026	4.9%	-25.2%	-33.5%
Spring	828	4.6%	906	4.8%	841	4.3%	808	3.9%	319	1.6%	-61.5%	-60.5%
Total AY	2,200	6.0%	2,323	6.0%	2,268	5.7%	2,351	5.5%	1,345	3.3%	-38.9%	-42.8%
Graduate												
Fall	356	1.9%	394	2.0%	382	1.9%	487	2.2%	244	1.2%	-31.5%	-49.9%
Spring	399	2.2%	404	2.1%	373	1.9%	552	2.7%	196	1.0%	-50.9%	-64.5%
Total AY	755	2.1%	798	2.1%	755	1.9%	1,039	2.4%	440	1.1%	-41.7%	-57.7%
<b>Total College Registrations</b>												
Fall	18,530		19,542		20,644		21,863		20,836			
Spring	17,838		18,995		19,462		20,693		19,347			
Total AY	36,368		38,537		40,106		42,556		40,183			

[1] All counts exclude independent studies, co-ops, internships without weekly class meetings, sections with 0 beginning enrollment, and sections offered to students abroad.

[2] Fall 2000 courses taught in DBS. As of fall 2001 courses offered by the Center for Academic Success.

**STUDENT/FACULTY RATIOS BY SCHOOL, ACADEMIC YEAR 2005-06 [1]**

School/Program	Sections Offered		Student FTE		Faculty FTE		Stu/Fac Ratio	Average Class Size
	Number	Column Percent	Number	Column Percent	Number	Column Percent		
Amer/Internl Studies	414	22.3%	1028	24.5%	58	22.5%	17.7	23.9
Admin and Business	247	13.3%	594	14.2%	32	12.4%	18.6	24.5
Contemporary Arts	354	19.1%	634	15.1%	51	19.8%	12.4	16.9
Social Sci/Human Svcs	353	19.0%	899	21.5%	50	19.4%	18.0	24.1
Theo/Applied Science	359	19.3%	800	19.1%	50	19.4%	16.0	21.1
CAS	24	1.3%	39	0.9%	3	1.2%	13.0	16.5
Interdisciplinary	71	3.8%	133	3.2%	9	3.5%	14.8	18.9
Master's Programs	36	1.9%	61	1.5%	5	1.9%	12.2	12.2
Total	1858		4188		258		16.2	21.6

[1] Section count excludes co-ops, independent studies, internships, fieldwork courses, and study abroad. Undergraduate FTE calculated at 32 credit hours per year. Graduate FTE calculated at 24 credit hours per year. Faculty FTE calculated at 24 credit hours per year. Team taught graduate courses not reflected in class size.

## GRANTS 2005/2006

<u>Name of Grant</u>	<u>Agency</u>	<u>Amount</u> (\$)	<u>Project Director</u>
Center for International Education	US DOE	800,000.00	C. Davey
The Governor's School	NJ CHE	279,529.00	S Rachouh
EOF	NJ DOE	468,912.00	R. Morales-Wright
Upward Bound	US DOE	255,743.00	C. Frishberg
Trio Student Support Services	US DOE	244,817.00	J. Balutanski
Nursing Traineeship (advanced)	US HHS	13,917.00	K. Burke
Nursing Scholarship	US HHS	145,747.00	K. Burke
College Bound	NJ CHE	141,180.00	C. Frishberg
University Partnership	USSD	29,232.00	T. Heed
Provisional Teacher Program	NJ DOE	78,000.00	R. Woodring
Teacher Quality	NJ DOE	15,050.00	A. Urbiel
SEE	NSF	317,602.00	A. Cristini
Robotics	NSF	42,948.00	A. Kumar
Violence Prevention	Dept Justice/Seton Hall	24,233.00	P. Bischoff

*NSF = National Science Foundation*

*US DOE = United States Department of Education*

*NJ DOE = New Jersey Department of Education*

*USSD = United States State Department*

*HHS = United States Department of Health and Human Services*



## LIBRARY COLLECTION

<u>Library Collections</u>	<u>Fiscal Year 2005</u>
Books, Serial Backfiles, and Other Materials	162,399
Current Subscriptions in Paper and Microform	558
Microforms	17,570
Audiovisual Materials	3,280

*Source: ACRL 2004-05 Academic Library Survey*