

SECTION IV:

**DEGREES AWARDED AND
STUDENT OUTCOMES**

2005 INSTITUTIONAL PROFILE

TOTAL 2004-05 DEGREES AWARDED = 1,152

By Age

	Bachelor's		Master's		Total	
Less than 20	0	0.0%	0	0.0%	0	0.0%
20 to 24	695	66.4%	1	0.9%	696	60.4%
25 to 29	203	19.4%	34	32.1%	237	20.6%
30 to 39	83	7.9%	34	32.1%	117	10.2%
Greater than 39	65	6.2%	37	34.9%	102	8.9%
	1,046		106		1,152	

By Sex

	Bachelor's		Master's		Total	
Female	671	64.1%	75	70.8%	746	64.8%
Male	375	35.9%	31	29.2%	406	35.2%
	1,046		106		1,152	

By Ethnicity

	Bachelor's		Master's		Total	
American Indian/Native Alaskan	2	0.2%	0	0.0%	2	0.2%
Asian/Pacific Islander	64	6.1%	2	1.9%	66	5.7%
Black, non-Hispanic	66	6.3%	4	3.8%	70	6.1%
Hispanic	60	5.7%	3	2.8%	63	5.5%
White, non-Hispanic	854	81.6%	97	91.5%	951	82.6%
	1,046		106		1,152	

By Citizenship

	Bachelor's		Master's		Total	
U.S. Citizen/Permanent Resident	996	95.2%	102	96.2%	1,098	95.3%
non-Citizen/non-Resident	50	4.8%	4	3.8%	54	4.7%
	1,046		106		1,152	

By Ethnicity and Citizenship

	Bachelor's		Master's		Total	
American Indian/Native Alaskan	2	0.2%	0	0.0%	2	0.2%
Asian/Pacific Islander	46	4.4%	1	0.9%	47	4.1%
Black, non-Hispanic	59	5.6%	3	2.8%	62	5.4%
Hispanic	59	5.6%	3	2.8%	62	5.4%
White, non-Hispanic	830	79.3%	95	89.6%	925	80.3%
Nonresident Alien	50	4.8%	4	3.8%	54	4.7%
	1,046		106		1,152	

By Status When First Admitted

	Bachelor's		Master's		Total	
Regular Admit	450	43.0%	106	100.0%	556	48.3%
Special Admit	39	3.7%	0	0.0%	39	3.4%
EOF Admit	41	3.9%	0	0.0%	41	3.6%
Transfer Admit	507	48.5%	0	0.0%	507	44.0%
EOF Transfer Admit	9	0.9%	0	0.0%	9	0.8%
	1,046		106		1,152	

By Degree Type

	Bachelor's		Master's		Total	
Bachelor of Arts (BA)	662	63.3%	0	0.0%	662	57.5%
Bachelor of Science (BS)	290	27.7%	0	0.0%	290	25.2%
Bachelor of Science in Nursing (BSN)	73	7.0%	0	0.0%	73	6.3%
Bachelor of Social Work (BSW)	21	2.0%	0	0.0%	21	1.8%
Master of Arts in Liberal Studies (MA)	0	0.0%	4	3.8%	4	0.3%
Master of Business Administration (MBA)	0	0.0%	19	17.9%	19	1.6%
Master of Science in Educational Technology (MS)	0	0.0%	79	74.5%	79	6.9%
Master of Science in Nursing (MSN)	0	0.0%	4	3.8%	4	0.3%
	1,046		106		1,152	

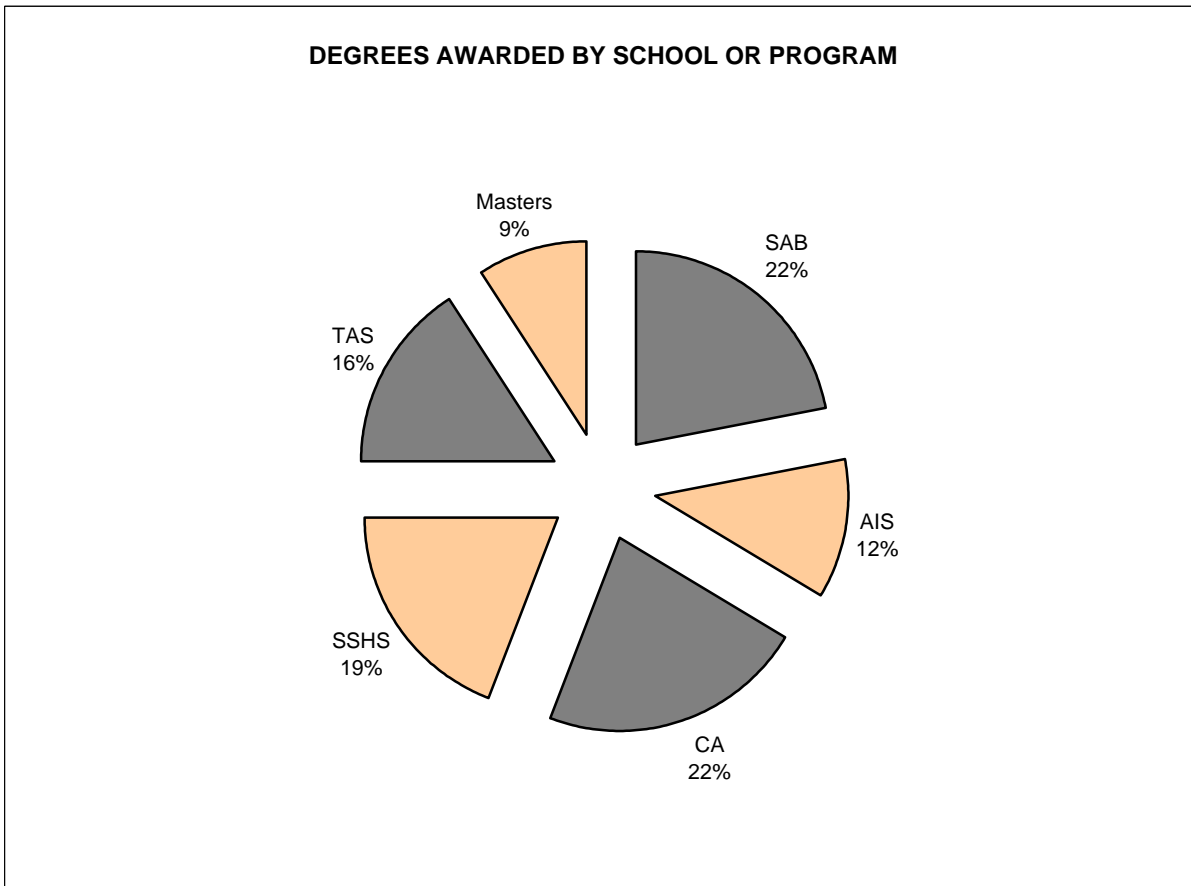
TOTAL 2004-05 DEGREES AWARDED = 1,152

	Bachelor of Arts (BA)		Bachelor of Science (BS)		Bachelor of Science in Nursing (BSN)		Bachelor of Social Work (BSW)		Master of Arts in Liberal Studies (MA)		Master of Business Admin. (MBA)		Master of Science in Ed. Tech. (MS)		Master of Science in Nursing (MSN)	
	Number	Percent	Number	Percent	Number	Percent	Number	Percent	Number	Percent	Number	Percent	Number	Percent	Number	Percent
By Age																
Less than 20	0	0.0%	0	0.0%	0	0.0%	0	0.0%	0	0.0%	0	0.0%	0	0.0%	0	0.0%
20 to 24	482	72.8%	176	60.7%	23	31.5%	14	66.7%	0	0.0%	1	5.3%	0	0.0%	0	0.0%
25 to 29	131	19.8%	66	22.8%	15	20.5%	4	19.0%	0	0.0%	9	47.4%	29	36.7%	0	0.0%
30 to 39	29	4.4%	26	9.0%	16	21.9%	2	9.5%	2	50.0%	5	26.3%	25	31.6%	0	0.0%
> 39	20	3.0%	22	7.6%	19	26.0%	1	4.8%	2	50.0%	4	21.1%	25	31.6%	4	100.0%
	662		290		73		21		4		19		79		4	
By Sex																
Female	444	67.1%	141	48.6%	68	93.2%	18	85.7%	2	50.0%	10	52.6%	59	74.7%	0	0.0%
Male	218	32.9%	149	51.4%	5	6.8%	3	14.3%	2	50.0%	9	47.4%	20	25.3%	4	100.0%
	662		290		73		21		4		19		79		4	
By Ethnicity																
Am. Ind./Nat. Al.	1	0.2%	1	0.3%	0	0.0%	0	0.0%	0	0.0%	0	0.0%	0	0.0%	0	0.0%
Asian/Pac. Is.	25	3.8%	30	10.3%	9	12.3%	0	0.0%	0	0.0%	1	5.3%	1	1.3%	0	0.0%
Black, non-Hisp.	34	5.1%	19	6.6%	11	15.1%	2	9.5%	0	0.0%	0	0.0%	4	5.1%	0	0.0%
Hispanic	34	5.1%	19	6.6%	4	5.5%	3	14.3%	0	0.0%	0	0.0%	3	3.8%	0	0.0%
White, non-Hisp.	568	85.8%	221	76.2%	49	67.1%	16	76.2%	4	100.0%	18	94.7%	71	89.9%	4	100.0%
	662		290		73		21		4		19		79		4	
By Citizenship																
U.S. Citizen	644	97.3%	261	90.0%	70	95.9%	21	100.0%	4	100.0%	16	84.2%	78	98.7%	4	100.0%
non-Citizen	18	2.7%	29	10.0%	3	4.1%	0	0.0%	0	0.0%	3	15.8%	1	1.3%	0	0.0%
	662		290		73		21		4		19		79		4	
By Ethnicity & Citizenship																
Am. Ind./Nat. Al.	1	0.2%	1	0.3%	0	0.0%	0	0.0%	0	0.0%	0	0.0%	0	0.0%	0	0.0%
Asian/Pac. Is.	20	3.0%	17	5.9%	9	12.3%	0	0.0%	0	0.0%	0	0.0%	1	1.3%	0	0.0%
Black, non-Hisp.	33	5.0%	16	5.5%	8	11.0%	2	9.5%	0	0.0%	0	0.0%	3	3.8%	0	0.0%
Hispanic	33	5.0%	19	6.6%	4	5.5%	3	14.3%	0	0.0%	0	0.0%	3	3.8%	0	0.0%
White, non-Hisp.	557	84.1%	208	71.7%	49	67.1%	16	76.2%	4	100.0%	16	84.2%	71	89.9%	4	100.0%
Nonresident Alien	18	2.7%	29	10.0%	3	4.1%	0	0.0%	0	0.0%	3	15.8%	1	1.3%	0	0.0%
	662		290		73		21		4		19		79		4	
By Initial Admit Type																
Regular	310	46.8%	116	40.0%	16	21.9%	8	38.1%	4	100.0%	19	100.0%	79	100.0%	4	100.0%
Special	36	5.4%	2	0.7%	1	1.4%	0	0.0%	0	0.0%	0	0.0%	0	0.0%	0	0.0%
EOF	27	4.1%	11	3.8%	2	2.7%	1	4.8%	0	0.0%	0	0.0%	0	0.0%	0	0.0%
Transfer	281	42.4%	160	55.2%	54	74.0%	12	57.1%	0	0.0%	0	0.0%	0	0.0%	0	0.0%
EOF Transfer	8	1.2%	1	0.3%	0	0.0%	0	0.0%	0	0.0%	0	0.0%	0	0.0%	0	0.0%
	662		290		73		21		4		19		79		4	

TOTAL 2004-05 DEGREES AWARDED = 1,152

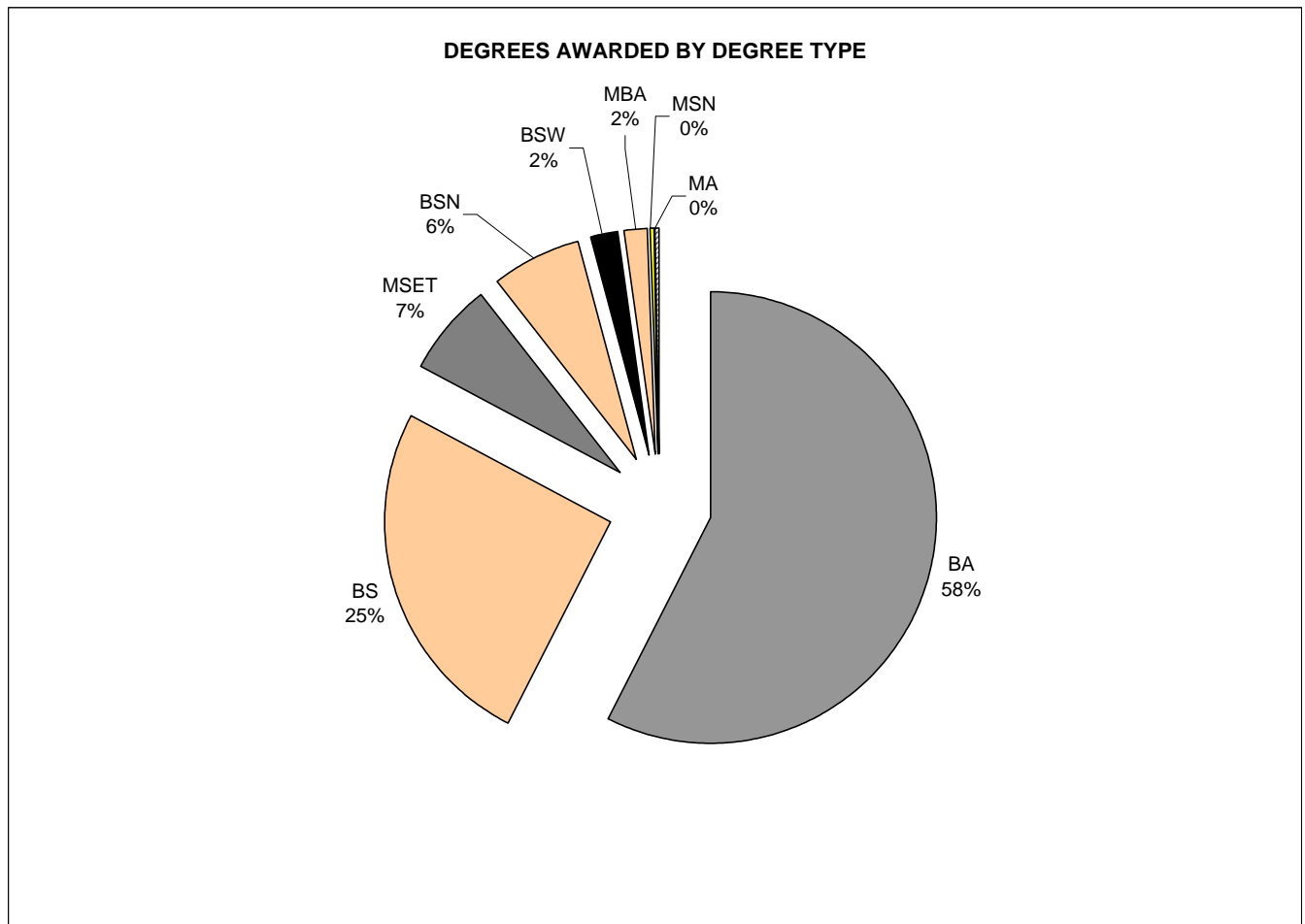
By School and Combined Graduate Programs

Administration and Business	252	21.9%
American and International Studies	136	11.8%
Contemporary Arts	256	22.2%
Social Science and Human Services	221	19.2%
Theoretical and Applied Sciences	181	15.7%
Master's Degree Programs (combined)	106	9.2%



TOTAL 2004-05 DEGREES AWARDED = 1,152

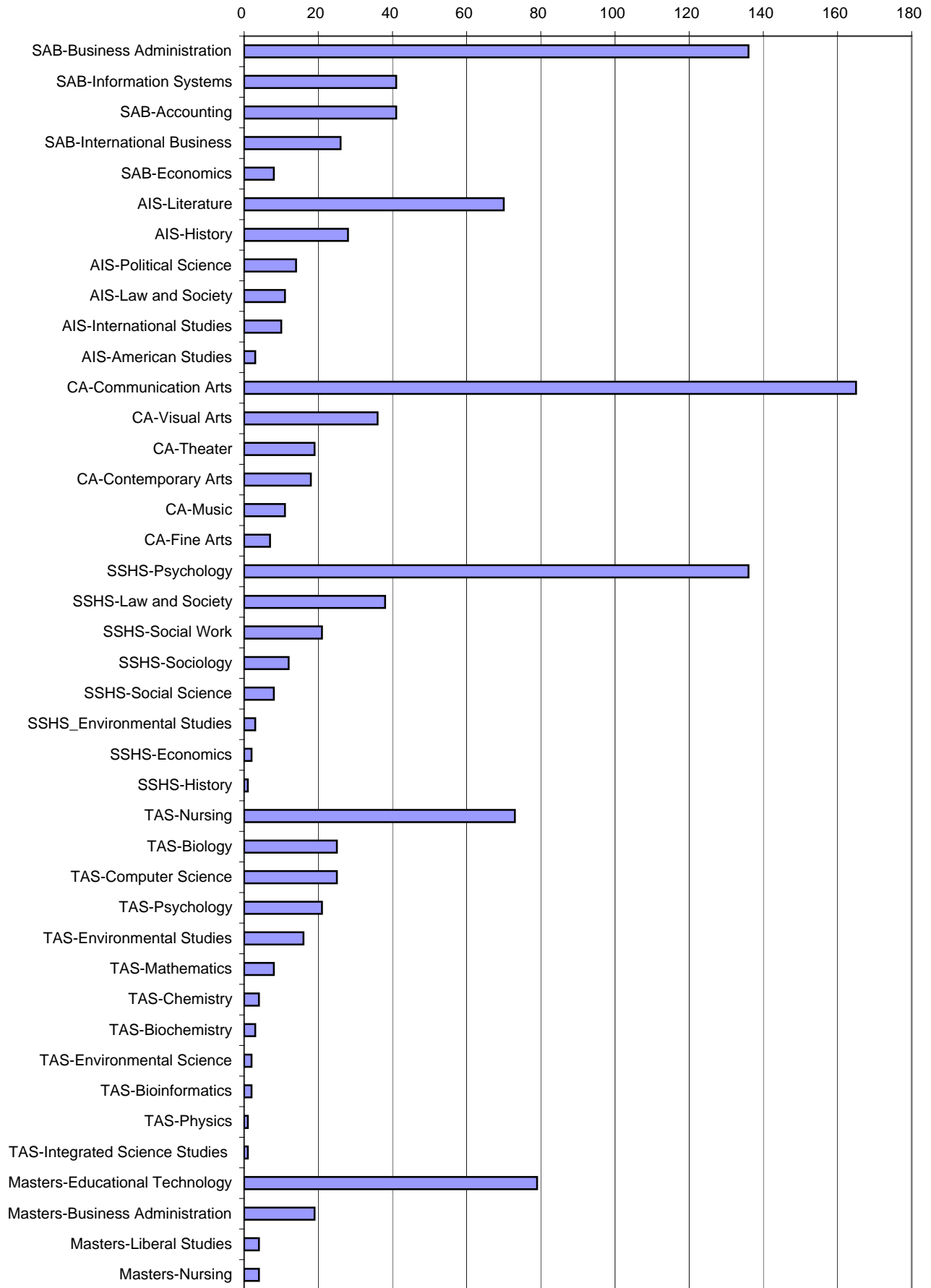
School or Program	BA		BS		BSN		BSW		MA		MBA		MSET		MSN	
	No.	Pct.	No.	Pct.	No.	Pct.	No.	Pct.	No.	Pct.	No.	Pct.	No.	Pct.	No.	Pct.
Admin. & Business	34	5.1%	218	75.2%	0	0.0%	0	0.0%	0	0.0%	0	0.0%	0	0.0%	0	0.0%
Amer. & Int'l Studies	136	20.5%	0	0.0%	0	0.0%	0	0.0%	0	0.0%	0	0.0%	0	0.0%	0	0.0%
Contemporary Arts	256	38.7%	0	0.0%	0	0.0%	0	0.0%	0	0.0%	0	0.0%	0	0.0%	0	0.0%
Soc. Sci. & Hum. Serv.	200	30.2%	0	0.0%	0	0.0%	21	100.0%	0	0.0%	0	0.0%	0	0.0%	0	0.0%
Theoretical & App. Sci.	36	5.4%	72	24.8%	73	100.0%	0	0.0%	0	0.0%	0	0.0%	0	0.0%	0	0.0%
Grad. Liberal Studies	0	0.0%	0	0.0%	0	0.0%	0	0.0%	4	100.0%	0	0.0%	0	0.0%	0	0.0%
Grad. Busn. Admn.	0	0.0%	0	0.0%	0	0.0%	0	0.0%	0	0.0%	19	100.0%	0	0.0%	0	0.0%
Grad. Educ. Tech. (MSET)	0	0.0%	0	0.0%	0	0.0%	0	0.0%	0	0.0%	0	0.0%	79	100.0%	0	0.0%
Grad. Nursing (MSN)	0	0.0%	0	0.0%	0	0.0%	0	0.0%	0	0.0%	0	0.0%	0	0.0%	4	100.0%
	662		290		73		21		4		19		79		4	



By School and Major (with Graduate Programs)

SAB	Accounting	41	3.6%
	Business Administration	136	11.8%
	Economics	8	0.7%
	Information Systems	41	3.6%
	International Business	26	2.3%
AIS	American Studies	3	0.3%
	History	28	2.4%
	International Studies	10	0.9%
	Law and Society	11	1.0%
	Literature	70	6.1%
	Political Science	14	1.2%
CA	Communication Arts	165	14.3%
	Contemporary Arts	18	1.6%
	Fine Arts	7	0.6%
	Music	11	1.0%
	Theater	19	1.6%
	Visual Arts	36	3.1%
SSHS	Economics	2	0.2%
	Environmental Studies	3	0.3%
	History	1	0.1%
	Law and Society	38	3.3%
	Psychology	136	11.8%
	Social Science	8	0.7%
	Social Work	21	1.8%
	Sociology	12	1.0%
TAS	Biochemistry	3	0.3%
	Bioinformatics	2	0.2%
	Biology	25	2.2%
	Chemistry	4	0.3%
	Computer Science	25	2.2%
	Environmental Science	2	0.2%
	Environmental Studies	16	1.4%
	Integrated Science Studies	1	0.1%
	Mathematics	8	0.7%
	Nursing	73	6.3%
	Physics	1	0.1%
	Psychology	21	1.8%
	MASTERS	Liberal Studies	4
Business Administration		19	1.6%
Educational Technology		79	6.9%
Nursing		4	0.3%

DEGREES AWARDED BY SCHOOL AND MAJOR/PROGRAM



TOTAL 2004-05 DEGREES AWARDED = 1,152

By Major or Graduate Program

Accounting	41	3.6%
American Studies	3	0.3%
Biochemistry	3	0.3%
Bioinformatics	2	0.2%
Biology	25	2.2%
Business Administration	136	11.8%
Chemistry	4	0.3%
Communication Arts	165	14.3%
Computer Science	25	2.2%
Contemporary Arts	18	1.6%
Economics [1]	10	0.9%
Environmental Science	2	0.2%
Environmental Studies [2]	19	1.6%
Fine Arts	7	0.6%
History [3]	29	2.5%
Information Systems	41	3.6%
Integrated Science Studies	1	0.1%
International Business	26	2.3%
International Studies	10	0.9%
Law and Society [4]	49	4.3%
Literature	70	6.1%
Masters in Business Administration	19	1.6%
Masters in Educational Technology	79	6.9%
Masters in Liberal Studies	4	0.3%
Masters in Nursing	4	0.3%
Mathematics	8	0.7%
Music	11	1.0%
Nursing	73	6.3%
Physics	1	0.1%
Political Science	14	1.2%
Psychology [5]	157	13.6%
Social Science	8	0.7%
Social Work	21	1.8%
Sociology	12	1.0%
Theater	19	1.6%
Visual Arts	36	3.1%

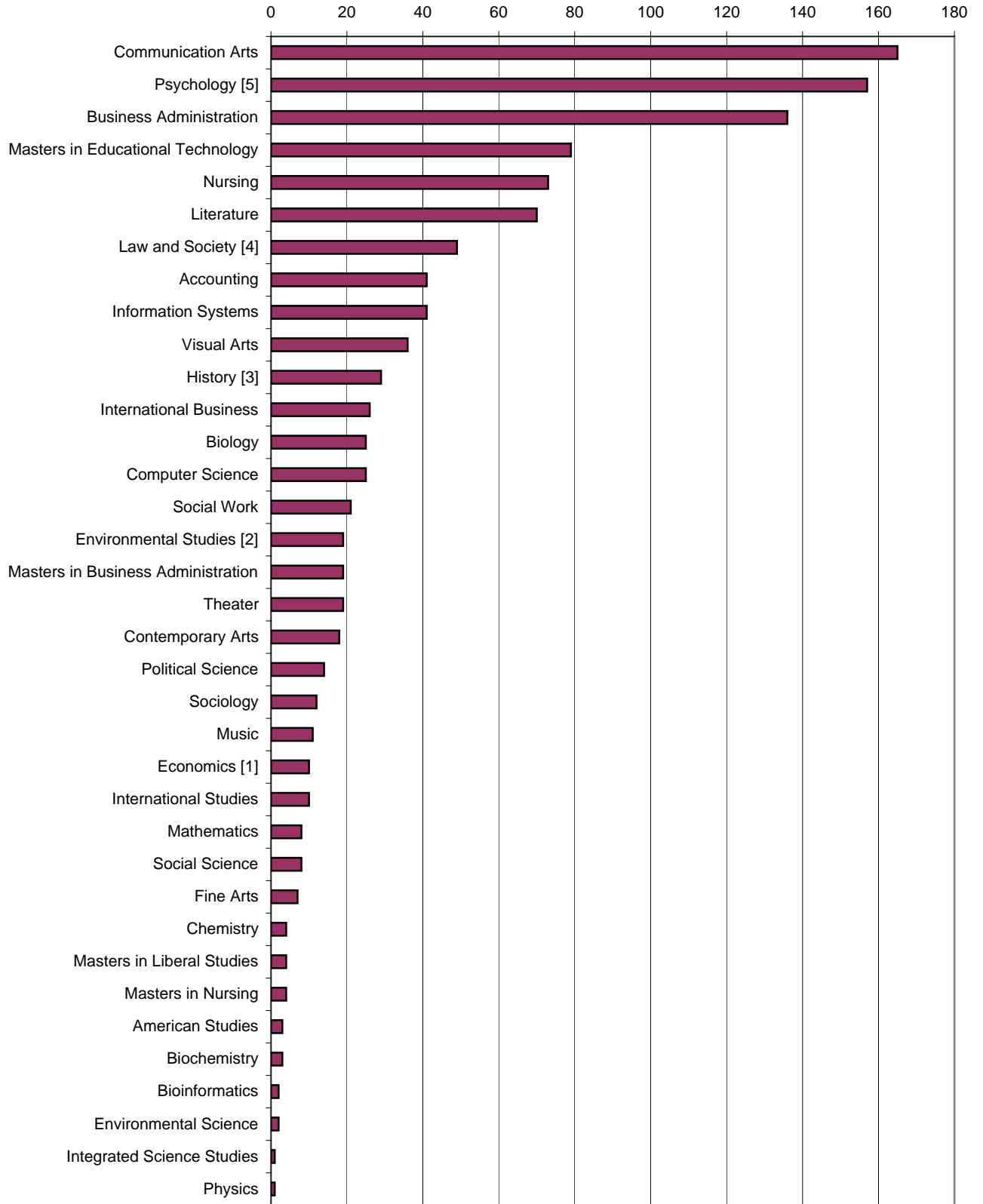
[1] Includes students from SAB and SSHS.

[2] Includes students from SSHS and TAS.

[3] Includes students from AIS and SSHS.

[4] Includes students from AIS and SSHS.

2004-05 DEGREES AWARDED BY MAJOR

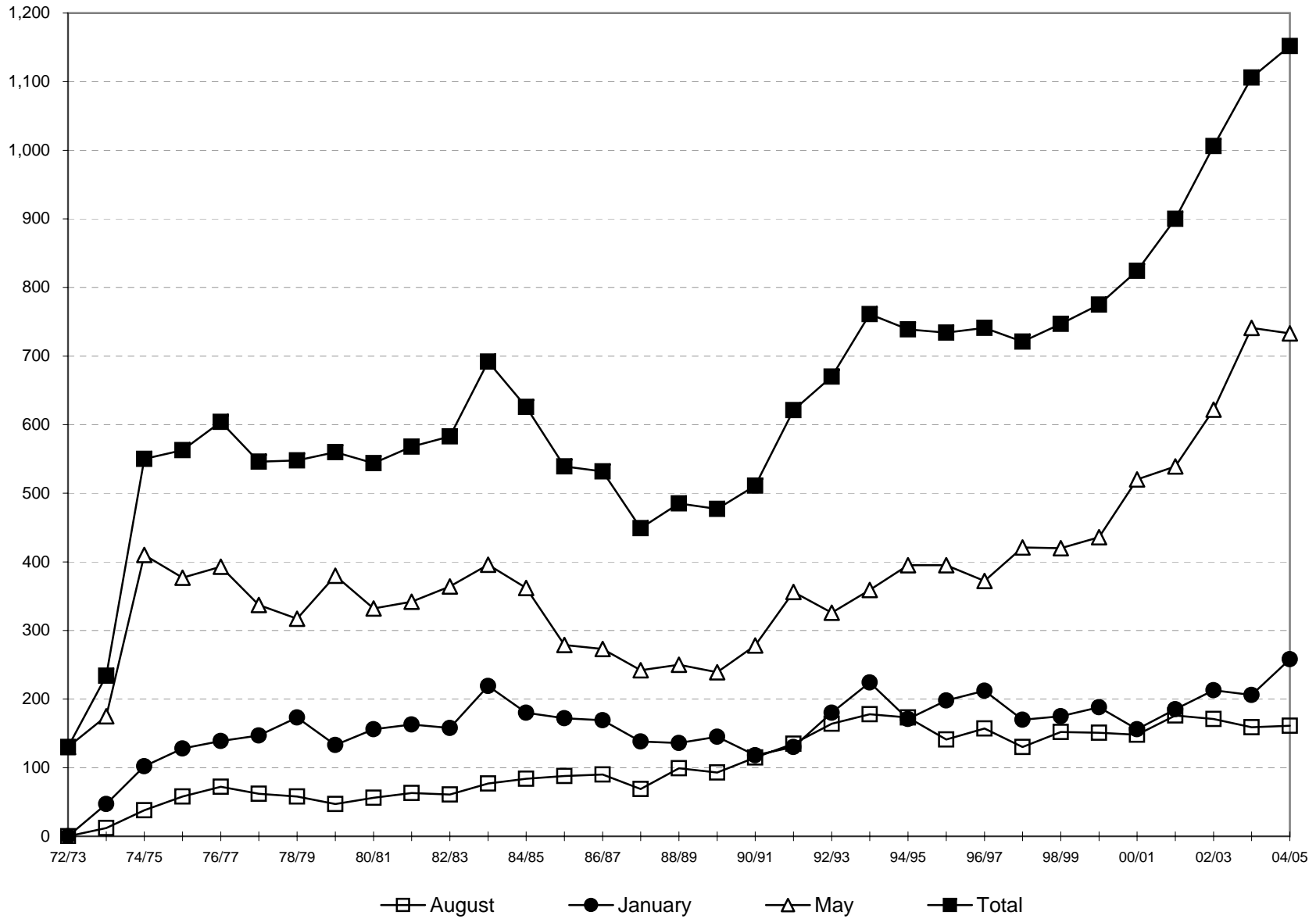


TOTAL DEGREES AWARDED, 1972 TO 2004-05*

Year	AUGUST DEGREES			JANUARY DEGREES			MAY DEGREES			TOTAL FISCAL YEAR DEGREES			CUMULATIVE DEGREES AWARDED SINCE 1972-73
	Number of Degrees Awarded	Percent Change From Previous August	Cumulative Percent Change From Aug. 1973	Number of Degrees Awarded	Percent Change From Previous January	Cumulative Percent Change From Jan. 1974	Number of Degrees Awarded	Percent Change From Previous May	Cumulative Percent Change From May 1973	Number of Degrees Awarded	Percent Change From Previous Fiscal Year	Cumulative Percent Change From 1972-73	
1972-73	N/A	N/A	N/A	N/A	N/A	N/A	130	N/A	0.0%	130	N/A	0.0%	130
1973-74	12	N/A	0.0%	47	N/A	0.0%	175	34.6%	34.6%	234	80.0%	80.0%	364
1974-75	38	216.7%	216.7%	102	117.0%	117.0%	410	134.3%	215.4%	550	135.0%	323.1%	914
1975-76	58	52.6%	383.3%	128	25.5%	172.3%	377	-8.0%	190.0%	563	2.4%	333.1%	1,477
1976-77	72	24.1%	500.0%	139	8.6%	195.7%	393	4.2%	202.3%	604	7.3%	364.6%	2,081
1977-78	62	-13.9%	416.7%	147	5.8%	212.8%	337	-14.2%	159.2%	546	-9.6%	320.0%	2,627
1978-79	58	-6.5%	383.3%	173	17.7%	268.1%	317	-5.9%	143.8%	548	0.4%	321.5%	3,175
1979-80	47	-19.0%	291.7%	133	-23.1%	183.0%	380	19.9%	192.3%	560	2.2%	330.8%	3,735
1980-81	56	19.1%	366.7%	156	17.3%	231.9%	332	-12.6%	155.4%	544	-2.9%	318.5%	4,279
1981-82	63	12.5%	425.0%	163	4.5%	246.8%	342	3.0%	163.1%	568	4.4%	336.9%	4,847
1982-83	61	-3.2%	408.3%	158	-3.1%	236.2%	364	6.4%	180.0%	583	2.6%	348.5%	5,430
1983-84	77	26.2%	541.7%	219	38.6%	366.0%	396	8.8%	204.6%	692	18.7%	432.3%	6,122
1984-85	84	9.1%	600.0%	180	-17.8%	283.0%	362	-8.6%	178.5%	626	-9.5%	381.5%	6,748
1985-86	88	4.8%	633.3%	172	-4.4%	266.0%	279	-22.9%	114.6%	539	-13.9%	314.6%	7,287
1986-87	90	2.3%	650.0%	169	-1.7%	259.6%	273	-2.2%	110.0%	532	-1.3%	309.2%	7,819
1987-88	69	-23.3%	475.0%	138	-18.3%	193.6%	242	-11.4%	86.2%	449	-15.6%	245.4%	8,268
1988-89	99	43.5%	725.0%	136	-1.4%	189.4%	250	3.3%	92.3%	485	8.0%	273.1%	8,753
1989-90	93	-6.1%	675.0%	145	6.6%	208.5%	239	-4.4%	83.8%	477	-1.6%	266.9%	9,230
1990-91	115	23.7%	858.3%	118	-18.6%	151.1%	278	16.3%	113.8%	511	7.1%	293.1%	9,741
1991-92	135	17.4%	1025.0%	130	10.2%	176.6%	356	28.1%	173.8%	621	21.5%	377.7%	10,362
1992-93	164	21.5%	1266.7%	180	38.5%	283.0%	326	-8.4%	150.8%	670	7.9%	415.4%	11,032
1993-94	178	8.5%	1383.3%	224	24.4%	376.6%	359	10.1%	176.2%	761	13.6%	485.4%	11,793
1994-95	173	-2.8%	1341.7%	171	-23.7%	263.8%	395	10.0%	203.8%	739	-2.9%	468.5%	12,532
1995-96	141	-18.5%	1075.0%	198	15.8%	321.3%	395	0.0%	203.8%	734	-0.7%	464.6%	13,266
1996-97	157	11.3%	1208.3%	212	7.1%	351.1%	372	-5.8%	186.2%	741	1.0%	470.0%	14,007
1997-98	130	-17.2%	983.3%	170	-19.8%	261.7%	421	13.2%	223.8%	721	-2.7%	454.6%	14,728
1998-99	152	16.9%	1166.7%	175	2.9%	272.3%	420	-0.2%	223.1%	747	3.6%	474.6%	15,475
1999-00	151	-0.7%	1158.3%	188	7.4%	300.0%	436	3.8%	235.4%	775	3.7%	496.2%	16,250
2000-01	148	-2.0%	1133.3%	156	-17.0%	231.9%	520	19.3%	300.0%	824	6.3%	533.8%	17,074
2001-02	176	18.9%	1366.7%	185	18.6%	293.6%	539	3.7%	314.6%	900	9.2%	592.3%	17,974
2002-03	171	-2.8%	1325.0%	213	15.1%	353.2%	622	15.4%	378.5%	1,006	11.8%	673.8%	18,080
2003-04	159	-7.0%	1225.0%	206	-3.3%	338.3%	741	19.1%	470.0%	1,106	9.9%	750.8%	19,080
2004-05	161	1.3%	1241.7%	258	25.2%	448.9%	733	-1.1%	463.8%	1,152	4.2%	786.2%	20,232

* Degrees are reported on a fiscal year basis. For example, 2004-05 graduates include degree recipients from August 2004, January 2005, and May 2005.

DEGREES AWARDED BY FISCAL YEAR, 1972-73 TO 2004-05



DEGREES AWARDED BY AGE, 2000-01 TO 2004-05

	2000-01		2001-02		2002-03		2003-04		2004-05		Pct. Change 00/01 to 04/05	Pct. Change 03/04 to 04/05
	No.	Pct.	No.	Pct.	No.	Pct.	No.	Pct.	No.	Pct.		
Bachelor's												
Less Than 20	1	0.1%	0	0.0%	0	0.0%	0	0.0%	0	0.0%	N/A	N/A
20 to 24	422	54.8%	492	59.1%	557	61.3%	652	64.6%	695	66.4%	64.7%	6.6%
25 to 29	180	23.4%	169	20.3%	184	20.3%	208	20.6%	203	19.4%	12.8%	-2.4%
30 to 39	96	12.5%	91	10.9%	90	9.9%	76	7.5%	83	7.9%	-13.5%	9.2%
40 and Over	71	9.2%	81	9.7%	77	8.5%	74	7.3%	65	6.2%	-8.5%	-12.2%
Total	770		833		908		1,010		1,046		35.8%	3.6%

	2000-01		2001-02		2002-03		2003-04		2004-05		Pct. Change 00/01 to 04/05	Pct. Change 03/04 to 04/05
	No.	Pct.	No.	Pct.	No.	Pct.	No.	Pct.	No.	Pct.		
Master's												
Less Than 20	0	0.0%	0	0.0%	0	0.0%	0	0.0%	0	0.0%	N/A	N/A
20 to 24	0	0.0%	1	1.5%	0	0.0%	1	1.0%	1	0.9%	N/A	N/A
25 to 29	12	22.2%	19	28.4%	20	20.4%	29	30.2%	34	32.1%	183.3%	17.2%
30 to 39	21	38.9%	27	40.3%	33	33.7%	38	39.6%	34	32.1%	61.9%	-10.5%
40 and Over	21	38.9%	20	29.9%	45	45.9%	28	29.2%	37	34.9%	76.2%	32.1%
Total	54		67		98		96		106		96.3%	10.4%

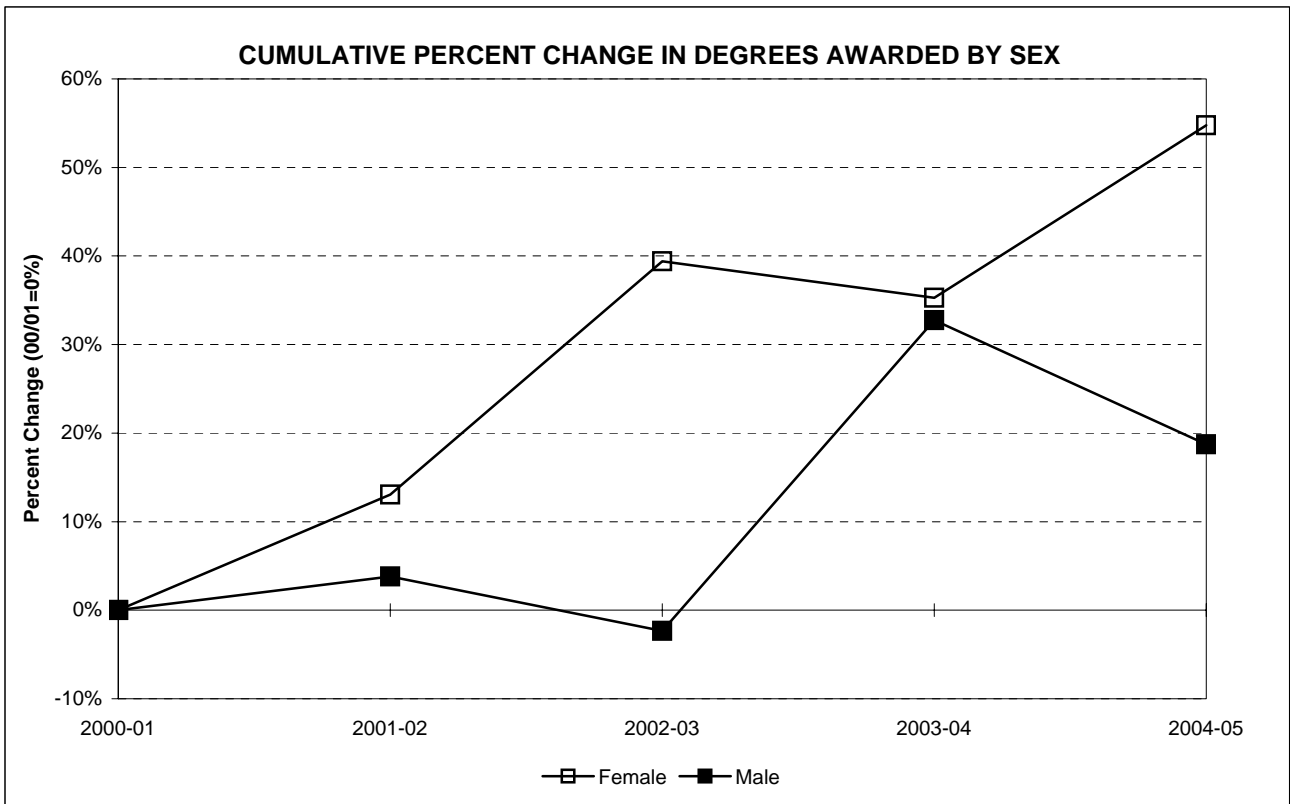
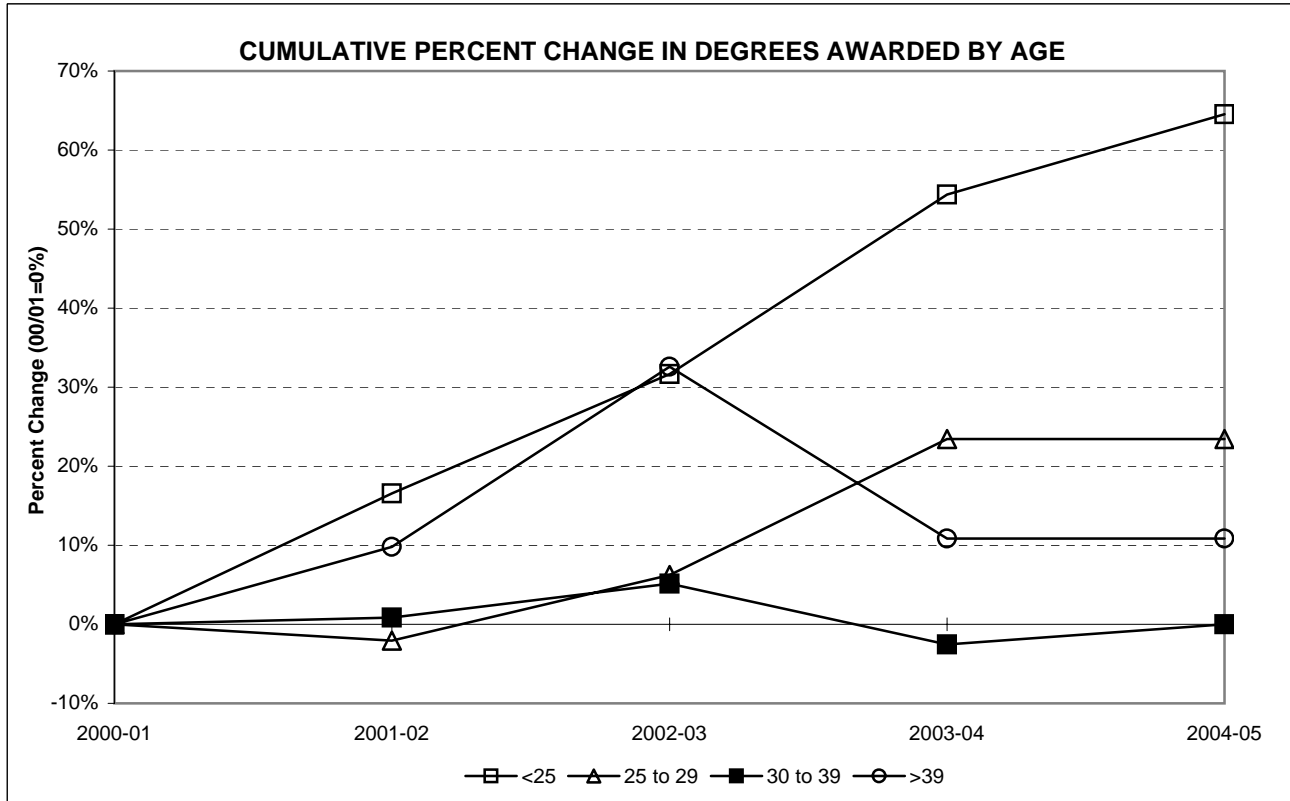
Total	2000-01		2001-02		2002-03		2003-04		2004-05		Pct. Change 00/01 to 04/05	Pct. Change 03/04 to 04/05
	No.	Pct.	No.	Pct.	No.	Pct.	No.	Pct.	No.	Pct.		
Less Than 20	1	0.1%	0	0.0%	0	0.0%	0	0.0%	0	0.0%	N/A	N/A
20 to 24	422	51.2%	493	54.8%	557	55.4%	653	59.0%	696	60.4%	64.9%	6.6%
25 to 29	192	23.3%	188	20.9%	204	20.3%	237	21.4%	237	20.6%	23.4%	0.0%
30 to 39	117	14.2%	118	13.1%	123	12.2%	114	10.3%	117	10.2%	0.0%	2.6%
40 and Over	92	11.2%	101	11.2%	122	12.1%	102	9.2%	102	8.9%	10.9%	0.0%
Total	824		900		1,006		1,106		1,152		39.8%	4.2%

DEGREES AWARDED BY SEX, 2000-01 TO 2004-05

	2000-01		2001-02		2002-03		2003-04		2004-05		Pct. Change 00/01 to 04/05	Pct. Change 03/04 to 04/05
	No.	Pct.	No.	Pct.	No.	Pct.	No.	Pct.	No.	Pct.		
Bachelor's												
Female	442	57.4%	502	60.3%	597	65.7%	604	59.8%	671	64.1%	51.8%	11.1%
Male	328	42.6%	331	39.7%	311	34.3%	406	40.2%	375	35.9%	14.3%	-7.6%
Total	770		833		908		1,010		1,046		35.8%	3.6%

	2000-01		2001-02		2002-03		2003-04		2004-05		Pct. Change 00/01 to 04/05	Pct. Change 03/04 to 04/05
	No.	Pct.	No.	Pct.	No.	Pct.	No.	Pct.	No.	Pct.		
Master's												
Female	40	74.1%	43	64.2%	75	76.5%	48	50.0%	75	70.8%	87.5%	56.3%
Male	14	25.9%	24	35.8%	23	23.5%	48	50.0%	31	29.2%	121.4%	-35.4%
Total	54		67		98		96		106		96.3%	10.4%

Total	2000-01		2001-02		2002-03		2003-04		2004-05		Pct. Change 00/01 to 04/05	Pct. Change 03/04 to 04/05
	No.	Pct.	No.	Pct.	No.	Pct.	No.	Pct.	No.	Pct.		
Female	482	58.5%	545	60.6%	672	66.8%	652	59.0%	746	64.8%	54.8%	14.4%
Male	342	41.5%	355	39.4%	334	33.2%	454	41.0%	406	35.2%	18.7%	-10.6%
Total	824		900		1,006		1,106		1,152		39.8%	4.2%



DEGREES AWARDED BY ETHNICITY, 2000-01 TO 2004-05

Bachelor's	2000-01		2001-02		2002-03		2003-04		2004-05		Pct. Change 00/01 to 04/05	Pct. Change 03/04 to 04/05
	No.	Pct.	No.	Pct.	No.	Pct.	No.	Pct.	No.	Pct.		
American Indian/Nat. Al.	0	0.0%	1	0.1%	5	0.6%	1	0.1%	2	0.2%	N/A	100.0%
Asian/Pacific Islander	53	6.9%	56	6.7%	48	5.3%	54	5.3%	64	6.1%	20.8%	18.5%
Black, non-Hispanic	72	9.4%	60	7.2%	65	7.2%	61	6.0%	66	6.3%	-8.3%	8.2%
Hispanic	50	6.5%	62	7.4%	72	7.9%	61	6.0%	60	5.7%	20.0%	-1.6%
White, non-Hispanic	595	77.3%	654	78.5%	718	79.1%	833	82.5%	854	81.6%	43.5%	2.5%
Total	770		833		908		1,010		1,046		35.8%	3.6%

Master's	2000-01		2001-02		2002-03		2003-04		2004-05		Pct. Change 00/01 to 04/05	Pct. Change 03/04 to 04/05
	No.	Pct.	No.	Pct.	No.	Pct.	No.	Pct.	No.	Pct.		
American Indian/Nat. Al.	0	0.0%	1	1.5%	1	1.0%	0	0.0%	0	0.0%	N/A	N/A
Asian/Pacific Islander	2	3.7%	1	1.5%	0	0.0%	9	9.4%	2	1.9%	0.0%	-77.8%
Black, non-Hispanic	3	5.6%	13	19.4%	3	3.1%	2	2.1%	4	3.8%	33.3%	100.0%
Hispanic	0	0.0%	1	1.5%	1	1.0%	1	1.0%	3	2.8%	N/A	200.0%
White, non-Hispanic	49	90.7%	51	76.1%	93	94.9%	84	87.5%	97	91.5%	98.0%	15.5%
Total	54		67		98		96		106		96.3%	10.4%

Total	2000-01		2001-02		2002-03		2003-04		2004-05		Pct. Change 00/01 to 04/05	Pct. Change 03/04 to 04/05
	No.	Pct.	No.	Pct.	No.	Pct.	No.	Pct.	No.	Pct.		
American Indian/Nat. Al.	0	0.0%	2	0.2%	6	0.6%	1	0.1%	2	0.2%	N/A	100.0%
Asian/Pacific Islander	55	6.7%	57	6.3%	48	4.8%	63	5.7%	66	5.7%	20.0%	4.8%
Black, non-Hispanic	75	9.1%	73	8.1%	68	6.8%	63	5.7%	70	6.1%	-6.7%	11.1%
Hispanic	50	6.1%	63	7.0%	73	7.3%	62	5.6%	63	5.5%	26.0%	1.6%
White, non-Hispanic	644	78.2%	705	78.3%	811	80.6%	917	82.9%	951	82.6%	47.7%	3.7%
Total	824		900		1,006		1,106		1,152		39.8%	4.2%



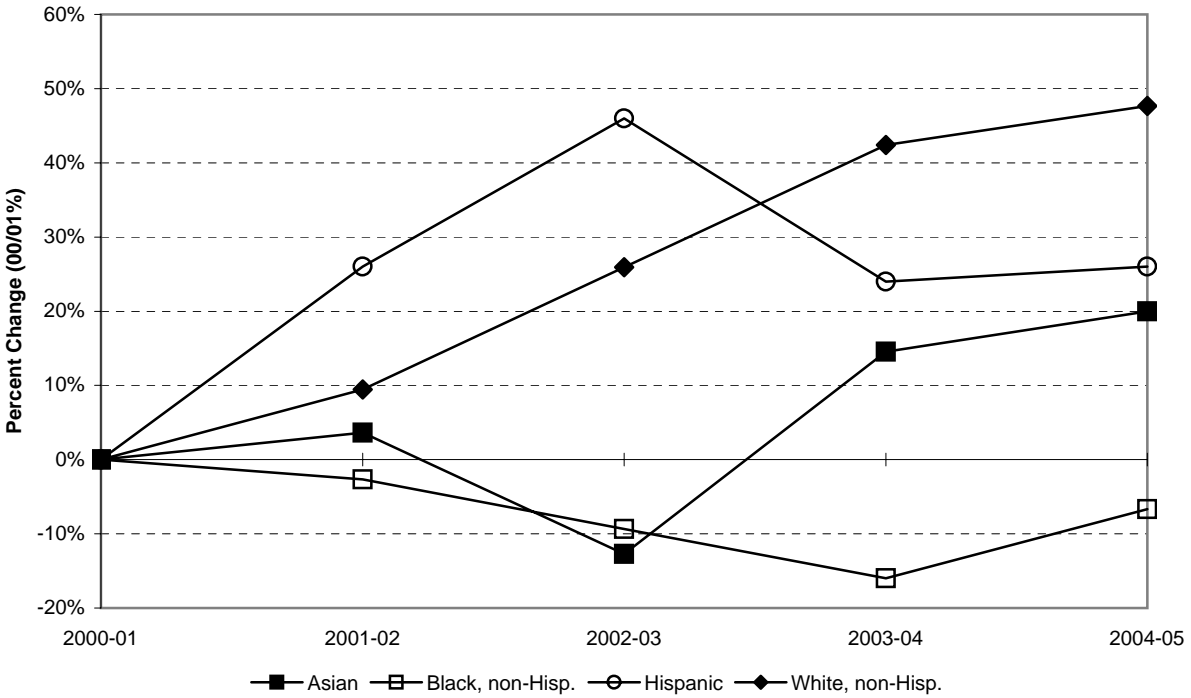
DEGREES AWARDED BY INITIAL ADMISSIONS TYPE, 2000-01 TO 2004-05

Bachelor's	2000-01		2001-02		2002-03		2003-04		2004-05		Pct. Change 00/01 to 04/05	Pct. Change 03/04 to 04/05
	No.	Pct.	No.	Pct.	No.	Pct.	No.	Pct.	No.	Pct.		
Regular	290	37.7%	326	39.1%	337	37.1%	442	43.8%	450	43.0%	55.2%	1.8%
EOF non-Transfer	46	6.0%	49	5.9%	45	5.0%	34	3.4%	41	3.9%	-10.9%	20.6%
EOF Transfer	11	1.4%	8	1.0%	5	0.6%	10	1.0%	9	0.9%	-18.2%	-10.0%
Special	28	3.6%	29	3.5%	28	3.1%	35	3.5%	39	3.7%	39.3%	11.4%
Transfer	395	51.3%	421	50.5%	493	54.3%	489	48.4%	507	48.5%	28.4%	3.7%
Total	770		833		908		1,010		1,046		35.8%	3.6%

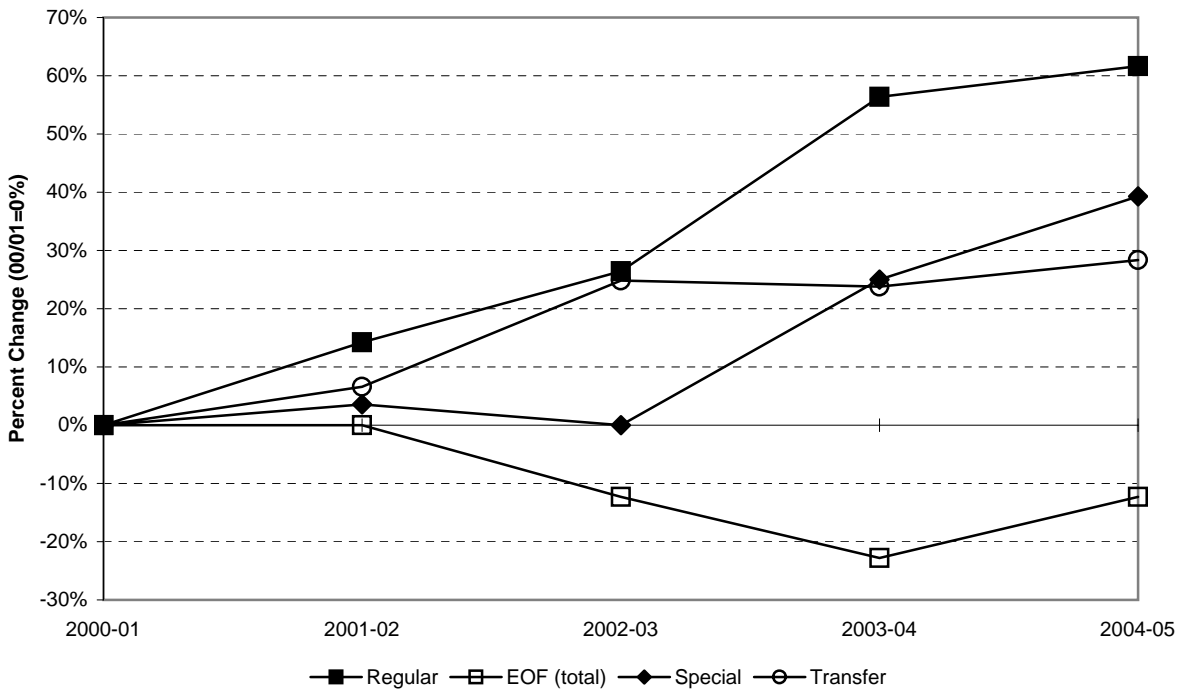
Master's	2000-01		2001-02		2002-03		2003-04		2004-05		Pct. Change 00/01 to 04/05	Pct. Change 03/04 to 04/05
	No.	Pct.	No.	Pct.	No.	Pct.	No.	Pct.	No.	Pct.		
Regular	54	100.0%	67	100.0%	98	100.0%	96	100.0%	106	100.0%	96.3%	10.4%
EOF non-Transfer	0	0.0%	0	0.0%	0	0.0%	0	0.0%	0	0.0%	N/A	N/A
EOF Transfer	0	0.0%	0	0.0%	0	0.0%	0	0.0%	0	0.0%	N/A	N/A
Special	0	0.0%	0	0.0%	0	0.0%	0	0.0%	0	0.0%	N/A	N/A
Transfer	0	0.0%	0	0.0%	0	0.0%	0	0.0%	0	0.0%	N/A	N/A
Total	54		67		98		96		106		96.3%	10.4%

Total	2000-01		2001-02		2002-03		2003-04		2004-05		Pct. Change 00/01 to 04/05	Pct. Change 03/04 to 04/05
	No.	Pct.	No.	Pct.	No.	Pct.	No.	Pct.	No.	Pct.		
Regular	344	41.7%	393	43.7%	435	43.2%	538	48.6%	556	48.3%	61.6%	3.3%
EOF non-Transfer	46	5.6%	49	5.4%	45	4.5%	34	3.1%	41	3.6%	-10.9%	20.6%
EOF Transfer	11	1.3%	8	0.9%	5	0.5%	10	0.9%	9	0.8%	-18.2%	-10.0%
Special	28	3.4%	29	3.2%	28	2.8%	35	3.2%	39	3.4%	39.3%	11.4%
Transfer	395	47.9%	421	46.8%	493	49.0%	489	44.2%	507	44.0%	28.4%	3.7%
Total	824		900		1,006		1,106		1,152		39.8%	4.2%

CUMULATIVE PERCENT CHANGE IN DEGREES AWARDED BY ETHNICITY



CUMULATIVE PCT. CHANGE IN DEGREES AWARDED BY INITIAL ADMIT TYPE



DEGREES AWARDED BY ETHNICITY AND CITIZENSHIP, 2000-01 TO 2004-05

Bachelor's	2000-01		2001-02		2002-03		2003-04		2004-05		Pct. Change 00/01 to 04/05	Pct. Change 03/04 to 04/05
	No.	Pct.	No.	Pct.	No.	Pct.	No.	Pct.	No.	Pct.		
American Indian/Nat. Al.	0	0.0%	1	0.1%	5	0.6%	1	0.1%	2	0.2%	N/A	100.0%
Asian/Pacific Islander	31	4.0%	37	4.4%	36	4.0%	37	3.7%	46	4.4%	48.4%	24.3%
Black, non-Hispanic	64	8.3%	56	6.7%	60	6.6%	57	5.6%	59	5.6%	-7.8%	3.5%
Hispanic	50	6.5%	60	7.2%	70	7.7%	59	5.8%	59	5.6%	18.0%	0.0%
White, non-Hispanic	582	75.6%	640	76.8%	701	77.2%	815	80.7%	830	79.3%	42.6%	1.8%
Nonresident Alien	43	5.6%	39	4.7%	36	4.0%	41	4.1%	50	4.8%	16.3%	22.0%
Total	770		833		908		1,010		1,046		35.8%	3.6%

Master's	2000-01		2001-02		2002-03		2003-04		2004-05		Pct. Change 00/01 to 04/05	Pct. Change 03/04 to 04/05
	No.	Pct.	No.	Pct.	No.	Pct.	No.	Pct.	No.	Pct.		
American Indian/Nat. Al.	0	0.0%	1	1.5%	1	1.0%	0	0.0%	0	0.0%	N/A	N/A
Asian/Pacific Islander	2	3.7%	0	0.0%	0	0.0%	7	7.3%	1	0.9%	-50.0%	-85.7%
Black, non-Hispanic	3	5.6%	12	17.9%	3	3.1%	2	2.1%	3	2.8%	0.0%	50.0%
Hispanic	0	0.0%	1	1.5%	1	1.0%	1	1.0%	3	2.8%	N/A	200.0%
White, non-Hispanic	47	87.0%	51	76.1%	91	92.9%	82	85.4%	95	89.6%	102.1%	15.9%
Nonresident Alien	2	3.7%	2	3.0%	2	2.0%	4	4.2%	4	3.8%	100.0%	0.0%
Total	54		67		98		96		106		96.3%	10.4%

Total	2000-01		2001-02		2002-03		2003-04		2004-05		Pct. Change 00/01 to 04/05	Pct. Change 03/04 to 04/05
	No.	Pct.	No.	Pct.	No.	Pct.	No.	Pct.	No.	Pct.		
American Indian/Nat. Al.	0	0.0%	2	0.2%	6	0.6%	1	0.1%	2	0.2%	N/A	100.0%
Asian/Pacific Islander	33	4.0%	37	4.1%	36	3.6%	44	4.0%	47	4.1%	42.4%	6.8%
Black, non-Hispanic	67	8.1%	68	7.6%	63	6.3%	59	5.3%	62	5.4%	-7.5%	5.1%
Hispanic	50	6.1%	61	6.8%	71	7.1%	60	5.4%	62	5.4%	24.0%	3.3%
White, non-Hispanic	629	76.3%	691	76.8%	792	78.7%	897	81.1%	925	80.3%	47.1%	3.1%
Nonresident Alien	45	5.5%	41	4.6%	38	3.8%	45	4.1%	54	4.7%	20.0%	20.0%
Total	824		900		1,006		1,106		1,152		39.8%	4.2%



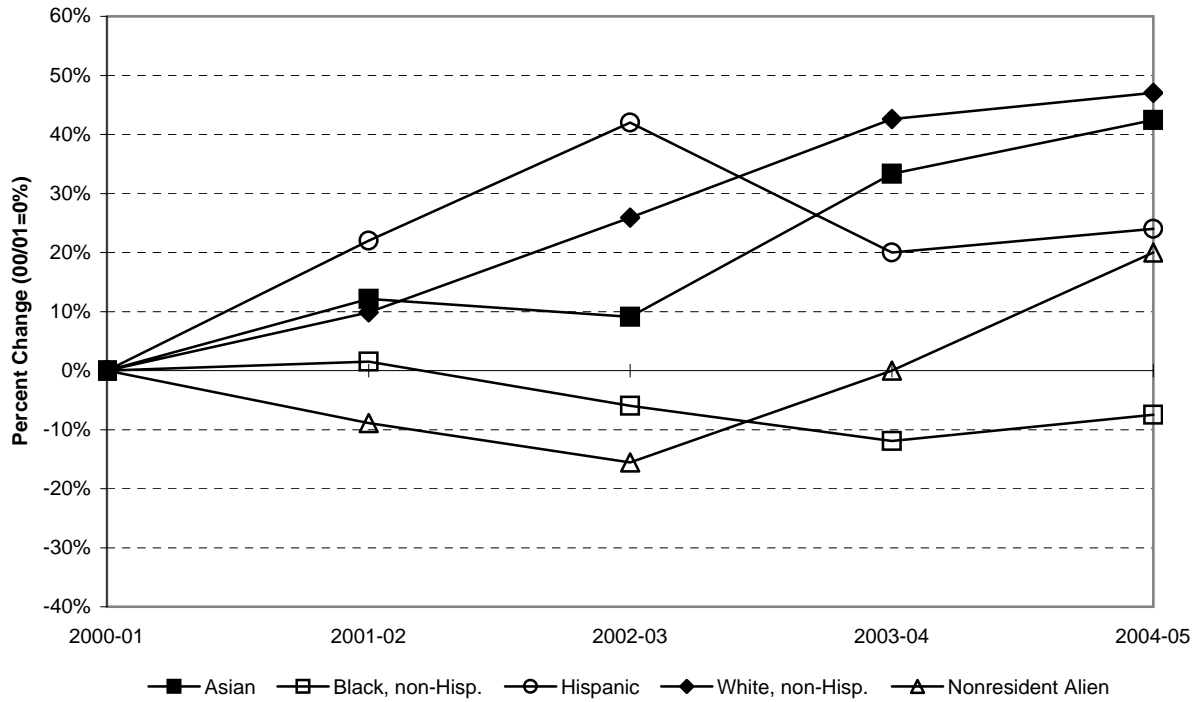
DEGREES AWARDED BY CITIZENSHIP, 2000-01 TO 2004-05

Bachelor's	2000-01		2001-02		2002-03		2003-04		2004-05		Pct. Change 00/01 to 04/05	Pct. Change 03/04 to 04/05
	No.	Pct.	No.	Pct.	No.	Pct.	No.	Pct.	No.	Pct.		
Citizen/Permanent Res.	727	94.4%	794	95.3%	872	96.0%	969	95.9%	996	95.2%	37.0%	2.8%
non-Citizen/non-Res.	43	5.6%	39	4.7%	36	4.0%	41	4.1%	50	4.8%	16.3%	22.0%
Total	770		833		908		1,010		1,046		35.8%	3.6%

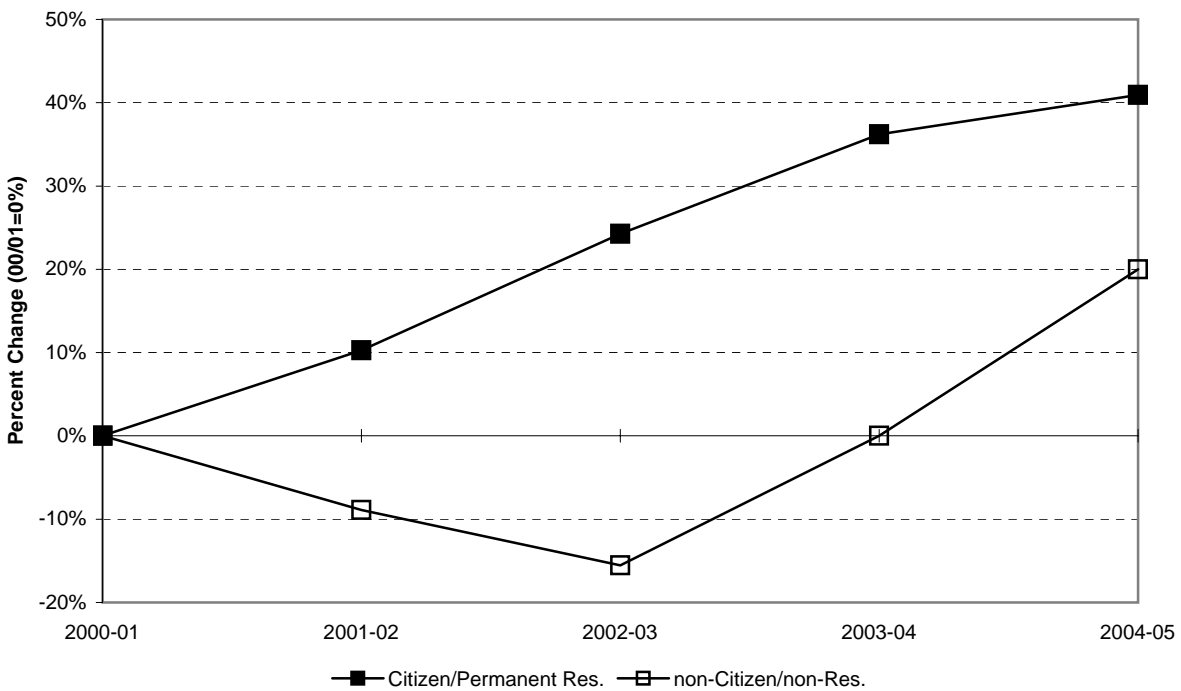
Master's	2001-02		2001-02		2002-03		2003-04		2004-05		Pct. Change 00/01 to 04/05	Pct. Change 03/04 to 04/05
	No.	Pct.	No.	Pct.	No.	Pct.	No.	Pct.	No.	Pct.		
Citizen/Permanent Res.	52	96.3%	65	97.0%	96	98.0%	92	95.8%	102	96.2%	96.2%	10.9%
non-Citizen/non-Res.	2	3.7%	2	3.0%	2	2.0%	4	4.2%	4	3.8%	100.0%	0.0%
Total	54		67		98		96		106		96.3%	10.4%

Total	2001-02		2001-02		2002-03		2003-04		2004-05		Pct. Change 00/01 to 04/05	Pct. Change 03/04 to 04/05
	No.	Pct.	No.	Pct.	No.	Pct.	No.	Pct.	No.	Pct.		
Citizen/Permanent Res.	779	94.5%	859	95.4%	968	96.2%	1,061	95.9%	1,098	95.3%	40.9%	3.5%
non-Citizen/non-Res.	45	5.5%	41	4.6%	38	3.8%	45	4.1%	54	4.7%	20.0%	20.0%
Total	824		900		1,006		1,106		1,152		39.8%	4.2%

CUM. PCT. CHANGE IN DEGREES AWARDED BY ETHNICITY & CITIZENSHIP

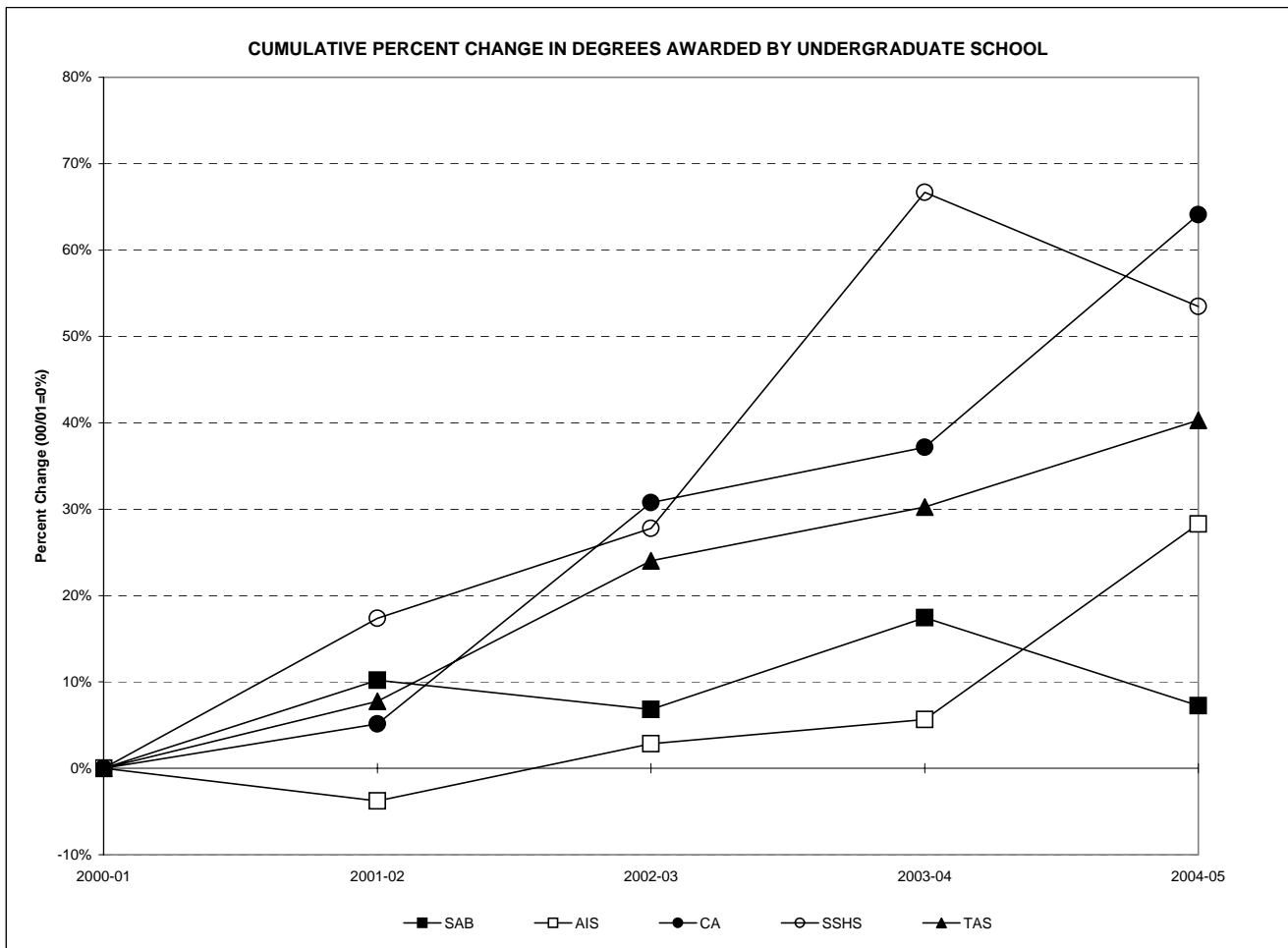


CUMULATIVE PERCENT CHANGE IN DEGREES AWARDED BY CITIZENSHIP



DEGREES AWARDED BY UNDERGRADUATE SCHOOL AND COMBINED GRADUATE PROGRAMS, 2000-01 TO 2004-05

Schools	2000-01		2001-02		2002-03		2003-04		2004-05		Percent Chg. 00/01 to 04/05	Percent Chg. 03/04 to 04/05
	No.	Pct.	No.	Pct.	No.	Pct.	No.	Pct.	No.	Pct.		
Admin. & Business	235	28.5%	259	28.8%	251	25.0%	276	25.0%	252	21.9%	7.2%	-8.7%
Amer. & Int'l Studies	106	12.9%	102	11.3%	109	10.8%	112	10.1%	136	11.8%	28.3%	21.4%
Contemporary Arts	156	18.9%	164	18.2%	204	20.3%	214	19.3%	256	22.2%	64.1%	19.6%
Soc. Sci. & Hum. Serv.	144	17.5%	169	18.8%	184	18.3%	240	21.7%	221	19.2%	53.5%	-7.9%
Theoretical & App. Sci. Graduate Programs	129	15.7%	139	15.4%	160	15.9%	168	15.2%	181	15.7%	40.3%	7.7%
Graduate Programs	54	6.6%	67	7.4%	98	9.7%	96	8.7%	106	9.2%	96.3%	10.4%
Total	824		900		1,006		1,106		1,152		39.8%	4.2%



DEGREES AWARDED BY SCHOOL AND MAJOR (WITH GRADUATE PROGRAMS), 2000-01 TO 2004-05

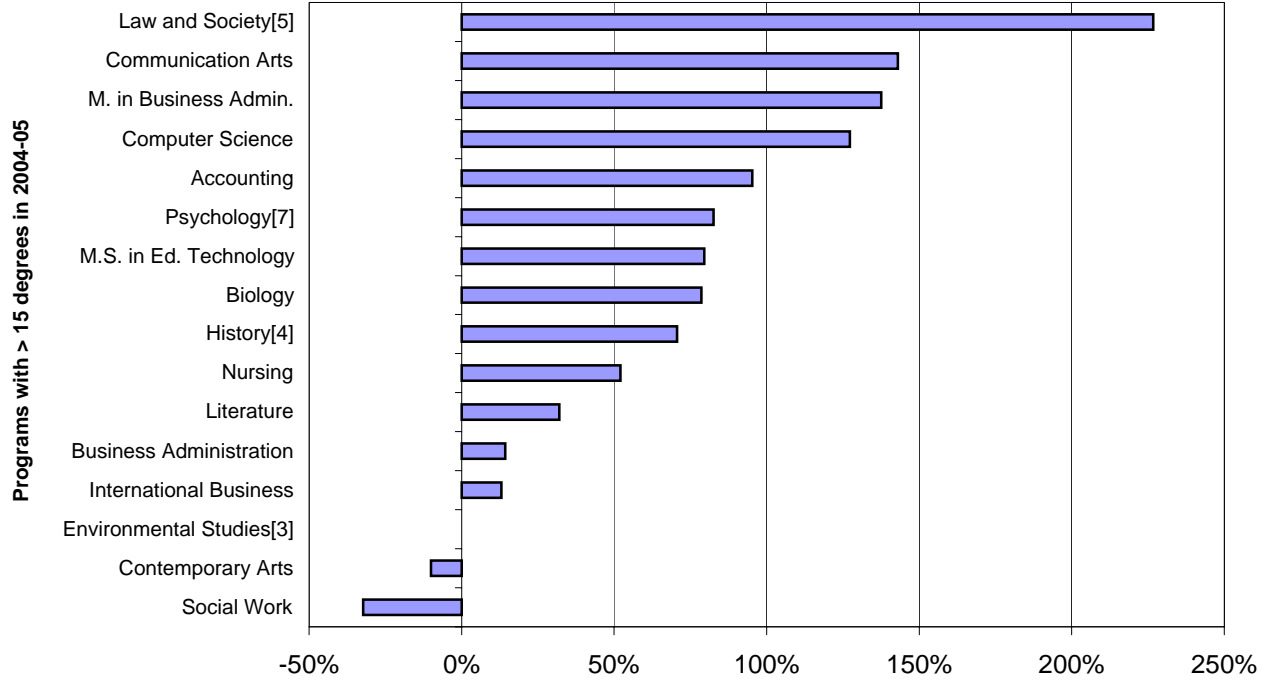
Majors/Programs	2000-01		2001-02		2002-03		2003-04		2004-05		Percent Chg. 00/01 to 04/05	Percent Chg. 03/04 to 04/05
	No.	Pct.	No.	Pct.	No.	Pct.	No.	Pct.	No.	Pct.		
Accounting	21	2.5%	31	3.4%	39	3.9%	35	3.2%	41	3.6%	95.2%	17.1%
Business Administration	119	14.4%	126	14.0%	128	12.7%	159	14.4%	136	11.8%	14.3%	-14.5%
Economics	14	1.7%	8	0.9%	16	1.6%	15	1.4%	8	0.7%	-42.9%	-46.7%
Information Systems	58	7.0%	71	7.9%	52	5.2%	48	4.3%	41	3.6%	-29.3%	-14.6%
International Business	23	2.8%	23	2.6%	16	1.6%	19	1.7%	26	2.3%	13.0%	36.8%
<i>Sub-Total: SAB</i>	<i>235</i>	<i>28.5%</i>	<i>259</i>	<i>28.8%</i>	<i>251</i>	<i>25.0%</i>	<i>276</i>	<i>25.0%</i>	<i>252</i>	<i>21.9%</i>	<i>7.2%</i>	<i>-8.7%</i>
American Studies	3	0.4%	6	0.7%	8	0.8%	7	0.6%	3	0.3%	0.0%	-57.1%
American/Int'l Studies	1	0.0%	0	0.0%	0	0.0%	0	0.0%	0	0.0%	-100.0%	N/A
History	17	2.1%	14	1.6%	28	2.8%	34	3.1%	28	2.4%	64.7%	-17.6%
International Studies	7	0.8%	8	0.9%	9	0.9%	6	0.5%	10	0.9%	42.9%	66.7%
Law and Society	10	1.2%	15	1.7%	8	0.8%	6	0.5%	11	1.0%	10.0%	83.3%
Literature	53	6.4%	45	5.0%	38	3.8%	47	4.2%	70	6.1%	32.1%	48.9%
Political Science	15	1.8%	14	1.6%	18	1.8%	12	1.1%	14	1.2%	-6.7%	16.7%
<i>Sub-Total: AIS</i>	<i>106</i>	<i>12.9%</i>	<i>102</i>	<i>11.3%</i>	<i>109</i>	<i>10.8%</i>	<i>112</i>	<i>10.1%</i>	<i>136</i>	<i>11.8%</i>	<i>28.3%</i>	<i>21.4%</i>
Communication Arts	101	12.3%	118	13.1%	143	14.2%	146	13.2%	165	14.3%	63.4%	13.0%
Contemporary Arts	20	2.4%	9	1.0%	10	1.0%	20	1.8%	18	1.6%	-10.0%	-10.0%
Fine Arts	35	4.2%	37	4.1%	10	1.0%	3	0.3%	7	0.6%	-80.0%	133.3%
Music	--	--	--	--	7	0.7%	8	0.7%	11	1.0%	N/A	37.5%
Theater	--	--	--	--	10	1.0%	21	1.9%	19	1.6%	N/A	-9.5%
Visual Arts	--	--	--	--	24	2.4%	16	1.4%	36	3.1%	N/A	125.0%
<i>Sub-Total: CA</i>	<i>156</i>	<i>18.9%</i>	<i>164</i>	<i>18.2%</i>	<i>204</i>	<i>20.3%</i>	<i>214</i>	<i>19.3%</i>	<i>256</i>	<i>22.2%</i>	<i>64.1%</i>	<i>19.6%</i>
Economics	2	0.2%	0	0.0%	2	0.2%	1	0.1%	2	0.2%	0.0%	100.0%
Environmental Studies	1	0.1%	1	0.1%	1	0.1%	0	0.0%	3	0.3%	200.0%	N/A
History	0	0.0%	1	0.1%	1	0.1%	2	0.2%	1	0.1%	N/A	-50.0%
Law and Society	5	0.6%	6	0.7%	7	0.7%	29	2.6%	38	3.3%	660.0%	31.0%
Psychology	68	8.3%	94	10.4%	112	11.1%	148	13.4%	136	11.8%	100.0%	-8.1%
Social Science	22	2.7%	23	2.6%	18	1.8%	13	1.2%	8	0.7%	-63.6%	-38.5%
Social Work	31	3.8%	23	2.6%	20	2.0%	30	2.7%	21	1.8%	-32.3%	-30.0%
Sociology	15	1.8%	21	2.3%	23	2.3%	17	1.5%	12	1.0%	-20.0%	-29.4%
<i>Sub-Total: SSHS</i>	<i>144</i>	<i>17.5%</i>	<i>169</i>	<i>18.8%</i>	<i>184</i>	<i>18.3%</i>	<i>240</i>	<i>21.7%</i>	<i>221</i>	<i>19.2%</i>	<i>53.5%</i>	<i>-7.9%</i>
Biochemistry	5	0.6%	6	0.7%	4	0.4%	4	0.4%	3	0.3%	-40.0%	-25.0%
Bioinformatics	0	0.0%	0	0.0%	0	0.0%	1	0.1%	2	0.2%	N/A	100.0%
Biology	14	1.7%	15	1.7%	18	1.8%	26	2.4%	25	2.2%	78.6%	-3.8%
Chemistry	1	0.1%	5	0.6%	4	0.4%	2	0.2%	4	0.3%	300.0%	100.0%
Computer Science	11	1.3%	9	1.0%	14	1.4%	15	1.4%	25	2.2%	127.3%	66.7%
Environmental Science	4	0.5%	3	0.3%	7	0.7%	3	0.3%	2	0.2%	-50.0%	-33.3%
Environmental Studies	18	2.2%	15	1.7%	11	1.1%	21	1.9%	16	1.4%	-11.1%	-23.8%
Integrated Science Studies	0	0.0%	0	0.0%	0	0.0%	0	0.0%	1	0.1%	N/A	N/A
Mathematics	8	1.0%	4	0.4%	8	0.8%	4	0.4%	8	0.7%	0.0%	100.0%
Nursing	48	5.8%	54	6.0%	69	6.9%	62	5.6%	73	6.3%	52.1%	17.7%
Physics	2	0.2%	0	0.0%	2	0.2%	2	0.2%	1	0.1%	-50.0%	-50.0%
Psychology	18	2.2%	28	3.1%	23	2.3%	28	2.5%	21	1.8%	16.7%	-25.0%
<i>Sub-Total: TAS</i>	<i>129</i>	<i>15.7%</i>	<i>139</i>	<i>15.4%</i>	<i>160</i>	<i>15.9%</i>	<i>168</i>	<i>15.2%</i>	<i>181</i>	<i>15.7%</i>	<i>40.3%</i>	<i>7.7%</i>
M.A. in Liberal Studies	2	0.2%	12	1.3%	10	1.0%	9	0.8%	4	0.3%	100.0%	-55.6%
M. in Business Admin.	8	1.0%	12	1.3%	8	0.8%	26	2.4%	19	1.6%	137.5%	-26.9%
M.S. in Educational Tech.	44	5.3%	43	4.8%	80	8.0%	61	5.5%	79	6.9%	79.5%	29.5%
M.S. in Nursing	0	0.0%	0	0.0%	0	0.0%	0	0.0%	4	0.3%	N/A	N/A
<i>Sub-Total: TAS</i>	<i>54</i>	<i>6.6%</i>	<i>67</i>	<i>7.4%</i>	<i>98</i>	<i>9.7%</i>	<i>96</i>	<i>8.7%</i>	<i>106</i>	<i>9.2%</i>	<i>96.3%</i>	<i>10.4%</i>
Total	824		900		1,006		1,106		1,152		39.8%	4.2%

DEGREES AWARDED BY MAJOR (WITH GRADUATE PROGRAMS), 2000-01 TO 2004-05

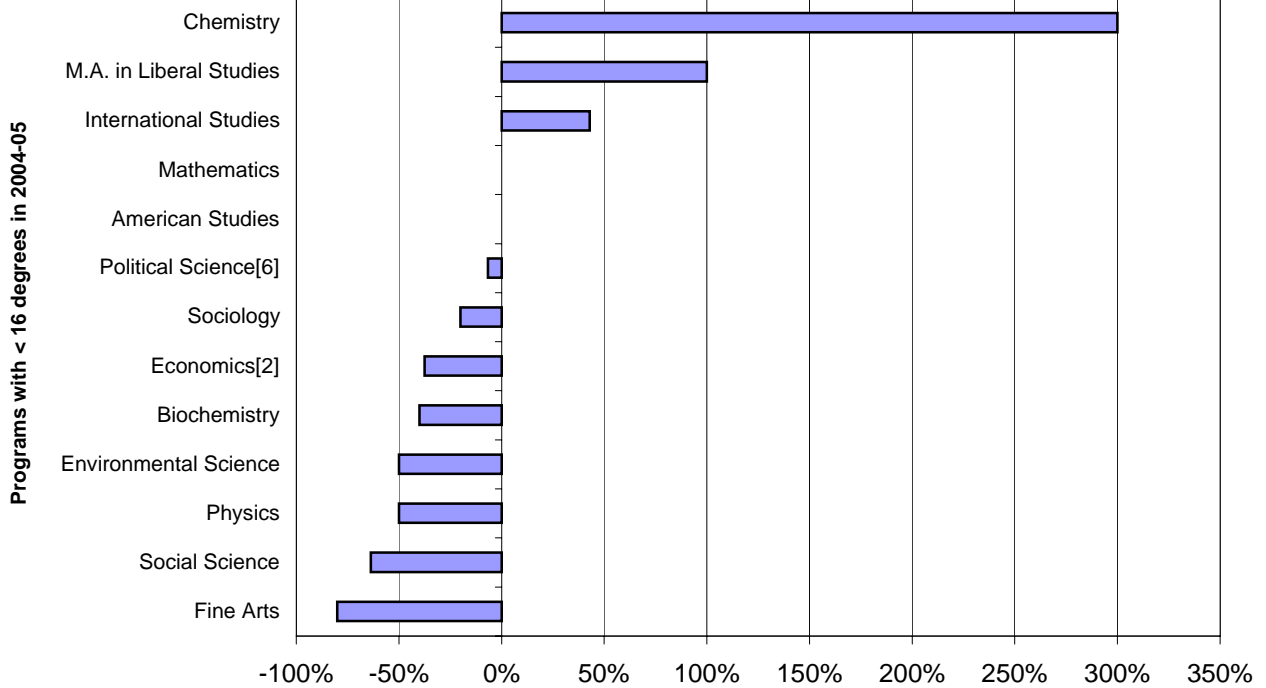
Major/Program	2000-01		2001-02		2002-03		2003-04		2004-05		Percent	Percent
	No.	Pct.	No.	Pct.	No.	Pct.	No.	Pct.	No.	Pct.	Chg. 00/01 to 04/05	Chg. 03/04 to 04/05
Accounting	21	2.5%	31	3.4%	39	3.9%	35	3.2%	41	3.6%	95.2%	17.1%
American Studies	3	0.4%	6	0.7%	8	0.8%	7	0.6%	3	0.3%	0.0%	-57.1%
American/Int'l Studies	1	0.1%	0	0.0%	0	0.0%	0	0.0%	0	0.0%	-100.0%	N/A
Biochemistry	5	0.6%	6	0.7%	4	0.4%	4	0.4%	3	0.3%	-40.0%	-25.0%
Bioinformatics	0	0.0%	0	0.0%	0	0.0%	1	0.1%	2	0.2%	N/A	100.0%
Biology	14	1.7%	15	1.7%	18	1.8%	26	2.4%	25	2.2%	78.6%	-3.8%
Business Administration	119	14.4%	126	14.0%	128	12.7%	159	14.4%	136	11.8%	14.3%	-14.5%
Chemistry	1	0.1%	5	0.6%	4	0.4%	2	0.2%	4	0.3%	300.0%	100.0%
Communication Arts	101	12.3%	118	13.1%	143	14.2%	146	13.2%	165	14.3%	143.0%	13.0%
Computer Science	11	1.3%	9	1.0%	14	1.4%	15	1.4%	25	2.2%	127.3%	66.7%
Contemporary Arts	20	2.4%	9	1.0%	10	1.0%	20	1.8%	18	1.6%	-10.0%	-10.0%
Economics[2]	16	1.9%	8	0.9%	18	1.8%	16	1.4%	10	0.9%	-37.5%	-37.5%
Environmental Science	4	0.5%	3	0.3%	7	0.7%	3	0.3%	2	0.2%	-50.0%	-33.3%
Environmental Studies[3]	19	2.3%	16	1.8%	12	1.2%	21	1.9%	19	1.6%	0.0%	-9.5%
Fine Arts	35	4.2%	37	4.1%	10	1.0%	3	0.3%	7	0.6%	-80.0%	133.3%
History[4]	17	2.1%	15	1.7%	29	2.9%	36	3.3%	29	2.5%	70.6%	-19.4%
Information Systems	58	7.0%	71	7.9%	52	5.2%	48	4.3%	41	3.6%	-29.3%	-14.6%
International Business	23	2.8%	23	2.6%	16	1.6%	19	1.7%	26	2.3%	13.0%	36.8%
Integrated Science	0	0.0%	0	0.0%	0	0.0%	0	0.0%	1	0.1%	N/A	N/A
International Studies	7	0.8%	8	0.9%	9	0.9%	6	0.5%	10	0.9%	42.9%	66.7%
Law and Society[5]	15	1.8%	21	2.3%	15	1.5%	35	3.2%	49	4.3%	226.7%	40.0%
Literature	53	6.4%	45	5.0%	38	3.8%	47	4.2%	70	6.1%	32.1%	48.9%
M.A. in Liberal Studies	2	0.2%	12	1.3%	10	1.0%	9	0.8%	4	0.3%	100.0%	-55.6%
M. in Business Admin.	8	1.0%	12	1.3%	8	0.8%	26	2.4%	19	1.6%	137.5%	-26.9%
M.S. in Ed. Technology	44	5.3%	43	4.8%	80	8.0%	61	5.5%	79	6.9%	79.5%	29.5%
M.S. in Nursing	0	0.0%	0	0.0%	0	0.0%	0	0.0%	4	0.3%	N/A	N/A
Mathematics	8	1.0%	4	0.4%	8	0.8%	4	0.4%	8	0.7%	0.0%	100.0%
Music	--	--	--	--	7	0.7%	8	0.7%	11	1.0%	N/A	37.5%
Nursing[1]	48	5.8%	54	6.0%	69	6.9%	62	5.6%	73	6.3%	52.1%	17.7%
Physics	2	0.2%	0	0.0%	2	0.2%	2	0.2%	1	0.1%	-50.0%	-50.0%
Political Science[6]	15	1.8%	14	1.6%	18	1.8%	12	1.1%	14	1.2%	-6.7%	16.7%
Psychology[7]	86	10.4%	122	13.6%	135	13.4%	176	15.9%	157	13.6%	82.6%	-10.8%
Social Science	22	2.7%	23	2.6%	18	1.8%	13	1.2%	8	0.7%	-63.6%	-38.5%
Social Work	31	3.8%	23	2.6%	20	2.0%	30	2.7%	21	1.8%	-32.3%	-30.0%
Sociology	15	1.8%	21	2.3%	23	2.3%	17	1.5%	12	1.0%	-20.0%	-29.4%
Theater	--	--	--	--	10	1.0%	21	1.9%	19	1.6%	N/A	-9.5%
Visual Arts	--	--	--	--	24	2.4%	16	1.4%	36	3.1%	N/A	125.0%
Total	824		900		1,006		1,106		1,152		39.8%	4.2%

- [1] Joint degree with UMDNJ.
- [2] Includes students from SAB and SSHS.
- [3] Includes students from SSHS and TAS.
- [4] Includes students from AIS and SSHS.
- [5] Includes students from AIS and SSHS.
- [6] Includes students from AIS and SSHS.
- [7] Includes students from SSHS and TAS.

PCT CHANGE (00/01 TO 04/05) IN DEGREES AWARDED BY PRIMARY MAJOR

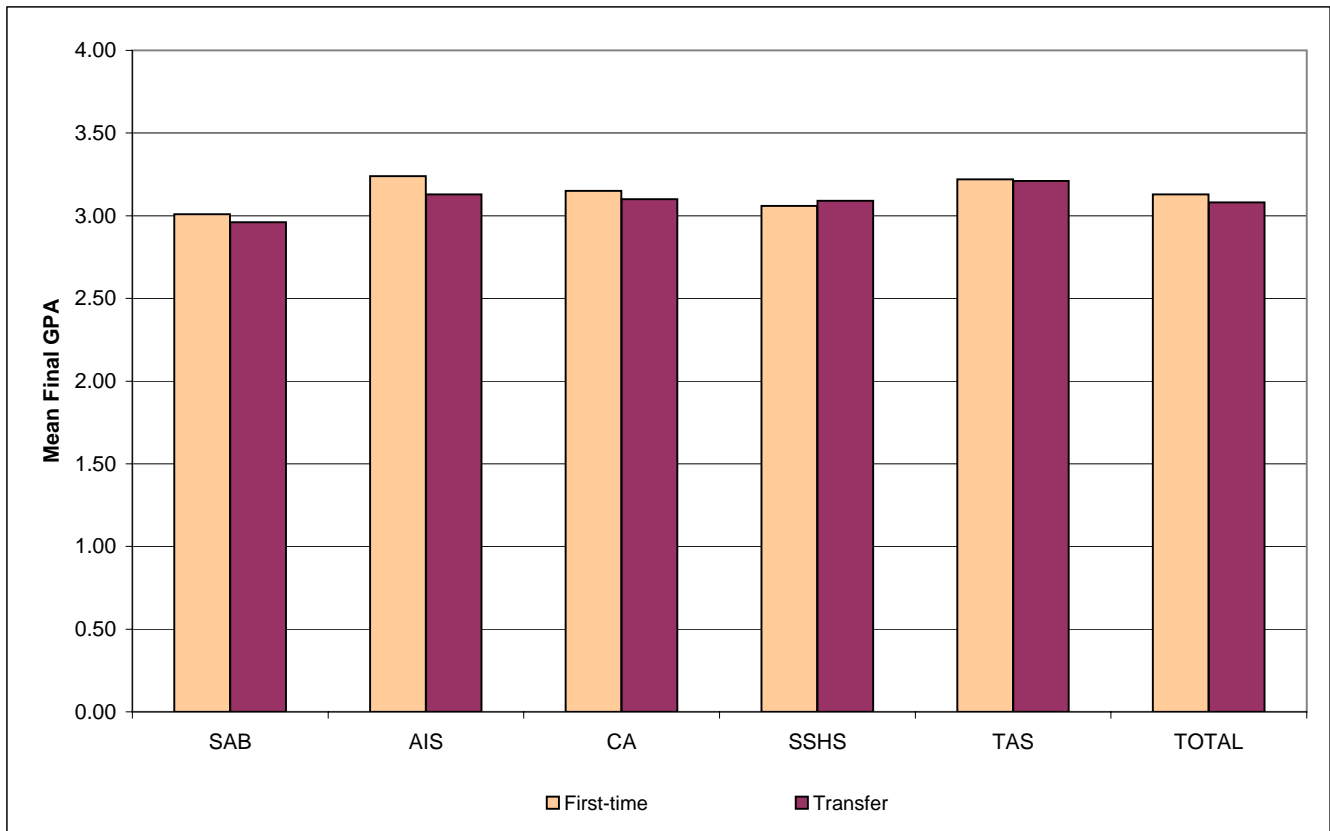


PCT CHANGE (00/01 TO 04/05) IN DEGREES AWARDED BY PRIMARY MAJOR



**MEAN FINAL GRADE POINT AVERAGES BY SCHOOL AND INITIAL ADMISSIONS TYPE
2004-05 DEGREE RECIPIENTS, UNDERGRADUATE ONLY**

School	Mean Final Grade Point Average of First-time Students		Mean Final Grade Point Average of Transfer Students		Overall Mean GPA
	Number	Mean GPA	Number	Mean GPA	
Admin. & Business	105	3.01	147	2.96	2.99
Amer. & Int'l Studies	76	3.24	60	3.13	3.19
Contemporary Arts	159	3.15	97	3.10	3.13
Soc. Sci. & Hum. Serv.	109	3.06	112	3.09	3.07
Theoretical & App. Sci.	81	3.22	100	3.21	3.21
Overall	530	3.13	516	3.08	3.12



NEW UNDERGRADUATE STUDENT COHORT RETENTION RATES

Fall of Entry	Sub-Cohorts*	Original Size	Retained One-Year		Retained Two-Years		Retained Three-Years		Retained Four-Years		Retained Five-Years		Retained Six-Years	
			#	Rate	#	Rate	#	Rate	#	Rate	#	Rate	#	Rate
1995	FTFTF	319	247	77.4%	184	57.7%	174	54.5%	99	31.0%	33	10.3%	15	4.7%
	PTFTF	21	10	47.6%	7	33.3%	6	28.6%	4	19.0%	3	14.3%	3	14.3%
	FTTR	311	236	75.9%	160	51.4%	72	23.2%	29	9.3%	15	4.8%	11	3.5%
	PTTR	197	119	60.4%	97	49.2%	72	36.5%	48	24.4%	33	16.8%	22	11.2%
	Total	848	612	72.2%	448	52.8%	324	38.2%	180	21.2%	84	9.9%	51	6.0%
1996	FTFTF	413	337	81.6%	281	68.0%	255	61.7%	153	37.0%	38	9.2%	22	5.3%
	PTFTF	17	10	58.8%	4	23.5%	3	17.6%	3	17.6%	1	5.9%	1	5.9%
	FTTR	339	257	75.8%	161	47.5%	67	19.8%	33	9.7%	8	2.4%	6	1.8%
	PTTR	210	124	59.0%	92	43.8%	64	30.5%	35	16.7%	26	12.4%	19	9.0%
	Total	979	728	74.4%	538	55.0%	389	39.7%	224	22.9%	73	7.5%	48	4.9%
1997	FTFTF	454	359	79.1%	306	67.4%	294	64.8%	162	35.7%	45	9.9%	22	4.8%
	PTFTF	17	8	47.1%	7	41.2%	4	23.5%	4	23.5%	3	17.6%	2	11.8%
	FTTR	351	269	76.6%	168	47.9%	73	20.8%	29	8.3%	12	3.4%	12	3.4%
	PTTR	208	139	66.8%	104	50.0%	69	33.2%	44	21.2%	31	14.9%	22	10.6%
	Total	1,030	775	75.2%	585	56.8%	440	42.7%	239	23.2%	91	8.8%	58	5.6%
1998	FTFTF	472	392	83.1%	353	74.8%	321	68.0%	167	35.4%	47	10.0%	22	4.7%
	PTFTF	17	12	70.6%	9	52.9%	7	41.2%	6	35.3%	4	23.5%	3	17.6%
	FTTR	351	264	75.2%	171	48.7%	77	21.9%	35	10.0%	12	3.4%	9	2.6%
	PTTR	183	120	65.6%	91	49.7%	67	36.6%	39	21.3%	29	15.8%	16	8.7%
	Total	1,023	788	77.0%	624	61.0%	472	46.1%	247	24.1%	92	9.0%	50	4.9%
1999	FTFTF	528	435	82.4%	378	71.6%	348	65.9%	146	27.7%	42	8.0%	18	3.4%
	PTFTF	8	4	50.0%	3	37.5%	2	25.0%	0	0.0%	0	0.0%	0	0.0%
	FTTR	364	274	75.3%	169	46.4%	88	24.2%	37	10.2%	15	4.1%	8	2.2%
	PTTR	152	93	61.2%	74	48.7%	53	34.9%	37	24.3%	27	17.8%	10	6.6%
	Total	1,052	806	76.6%	624	59.3%	491	46.7%	220	20.9%	84	8.0%	36	3.4%
2000	FTFTF	638	542	85.0%	490	76.8%	459	71.9%	187	29.3%	31	4.9%	-	-
	PTFTF	6	4	66.7%	4	66.7%	4	66.7%	4	66.7%	2	33.3%	-	-
	FTTR	369	276	74.8%	184	49.9%	75	20.3%	27	7.3%	8	2.2%	-	-
	PTTR	150	84	56.0%	65	43.3%	44	29.3%	29	19.3%	19	12.7%	-	-
	Total	1,163	906	77.9%	743	63.9%	582	50.0%	247	21.2%	60	5.2%	-	-
2001	FTFTF	628	525	83.6%	468	74.5%	446	71.0%	140	22.3%	-	-	-	-
	PTFTF	5	2	40.0%	2	40.0%	2	40.0%	2	40.0%	-	-	-	-
	FTTR	364	291	79.9%	190	52.2%	70	19.2%	26	7.1%	-	-	-	-
	PTTR	141	92	65.2%	73	51.8%	42	29.8%	30	21.3%	-	-	-	-
	Total	1,138	910	80.0%	733	64.4%	560	49.2%	198	17.4%	-	-	-	-
2002	FTFTF	684	595	87.0%	536	78.4%	512	74.9%	-	-	-	-	-	-
	PTFTF	3	1	33.3%	1	33.3%	1	33.3%	-	-	-	-	-	-
	FTTR	433	338	78.1%	221	51.0%	85	19.6%	-	-	-	-	-	-
	PTTR	135	85	63.0%	59	43.7%	36	26.7%	-	-	-	-	-	-
	Total	1,255	1,019	81.2%	817	65.1%	634	50.5%	-	-	-	-	-	-
2003	FTFTF	725	646	89.1%	578	79.7%	-	-	-	-	-	-	-	-
	PTFTF	0	-	N/A	-	N/A	-	-	-	-	-	-	-	-
	FTTR	378	315	83.3%	209	55.3%	-	-	-	-	-	-	-	-
	PTTR	120	63	52.5%	45	37.5%	-	-	-	-	-	-	-	-
	Total	1,223	1,024	83.7%	832	68.0%	-	-	-	-	-	-	-	-
2004	FTFTF	755	674	89.3%	-	-	-	-	-	-	-	-	-	-
	PTFTF	0	0	N/A	-	-	-	-	-	-	-	-	-	-
	FTTR	398	346	86.9%	-	-	-	-	-	-	-	-	-	-
	PTTR	93	63	67.7%	-	-	-	-	-	-	-	-	-	-
	Total	1,246	1,083	86.9%	-	-	-	-	-	-	-	-	-	-

* FTFTF=full-time, first-time freshmen; PTFTF=part-time, first-time freshmen; FTTR=full-time transfers; and PTTR=part-time transfers.

NEW UNDERGRADUATE STUDENT COHORT CUMULATIVE GRADUATION RATES

Fall of Entry	Sub-Cohorts*	Original Size	One-Year Cumulative Graduation		Two-Year Cumulative Graduation		Three-Year Cumulative Graduation		Four-Year Cumulative Graduation		Five-Year Cumulative Graduation		Six-Year Cumulative Graduation	
			#	Rate	#	Rate	#	Rate	#	Rate	#	Rate	#	Rate
1995	FTFTF	319	0	0.0%	0	0.0%	1	0.3%	67	21.0%	133	41.7%	149	46.7%
	PTFTF	21	0	0.0%	0	0.0%	0	0.0%	0	0.0%	0	0.0%	1	4.8%
	FTTR	311	0	0.0%	53	17.0%	131	42.1%	169	54.3%	183	58.8%	187	60.1%
	PTTR	197	0	0.0%	4	2.0%	21	10.7%	36	18.3%	49	24.9%	58	29.4%
	Total	848	0	0.0%	57	6.7%	153	18.0%	272	32.1%	365	43.0%	395	46.6%
1996	FTFTF	413	0	0.0%	0	0.0%	4	1.0%	102	24.7%	205	49.6%	224	54.2%
	PTFTF	17	0	0.0%	0	0.0%	0	0.0%	0	0.0%	1	5.9%	1	5.9%
	FTTR	339	1	0.3%	56	16.5%	129	38.1%	176	51.9%	191	56.3%	194	57.2%
	PTTR	210	0	0.0%	8	3.8%	32	15.2%	55	26.2%	65	31.0%	72	34.3%
	Total	979	1	0.1%	64	6.5%	165	16.9%	333	34.0%	462	47.2%	491	50.2%
1997	FTFTF	454	0	0.0%	0	0.0%	1	0.2%	131	28.9%	222	48.9%	244	53.7%
	PTFTF	17	0	0.0%	0	0.0%	0	0.0%	0	0.0%	1	5.9%	1	5.9%
	FTTR	351	2	0.6%	69	19.7%	154	43.9%	195	55.6%	212	60.4%	217	61.8%
	PTTR	208	0	0.0%	6	2.9%	22	10.6%	44	21.2%	55	26.4%	67	32.2%
	Total	1,030	2	0.2%	75	7.3%	177	17.2%	370	35.9%	490	47.6%	529	51.4%
1998	FTFTF	472	0	0.0%	0	0.0%	6	1.3%	170	36.0%	267	56.6%	294	62.3%
	PTFTF	17	0	0.0%	0	0.0%	0	0.0%	1	5.9%	3	17.6%	4	23.5%
	FTTR	351	1	0.3%	70	19.9%	143	40.7%	183	52.1%	200	57.0%	207	59.0%
	PTTR	183	0	0.0%	7	3.8%	25	13.7%	48	26.2%	57	31.1%	64	35.0%
	Total	1,023	1	0.1%	77	7.5%	174	17.0%	402	39.3%	527	51.5%	569	55.6%
1999	FTFTF	528	0	0.0%	1	0.2%	7	1.3%	203	38.4%	288	54.5%	311	59.4%
	PTFTF	8	0	0.0%	0	0.0%	0	0.0%	0	0.0%	0	0.0%	0	0.0%
	FTTR	364	2	0.5%	81	22.3%	159	43.7%	204	56.0%	219	60.2%	225	61.8%
	PTTR	152	0	0.0%	5	3.3%	14	9.2%	32	21.1%	38	25.0%	53	34.9%
	Total	1,052	2	0.2%	87	8.3%	180	17.1%	439	41.7%	545	51.8%	589	56.0%
2000	FTFTF	638	0	0.0%	2	0.3%	10	1.6%	284	44.5%	402	63.0%	-	-
	PTFTF	6	0	0.0%	0	0.0%	0	0.0%	1	16.7%	1	16.7%	-	-
	FTTR	369	3	0.8%	75	20.3%	172	46.6%	216	58.5%	232	62.9%	-	-
	PTTR	150	0	0.0%	4	2.7%	23	15.3%	40	26.7%	50	33.3%	-	-
	Total	1,163	3	0.3%	81	7.0%	205	17.6%	541	46.5%	685	58.9%	-	-
2001	FTFTF	628	0	0.0%	0	0.0%	7	1.1%	304	48.4%	-	-	-	-
	PTFTF	5	0	0.0%	0	0.0%	0	0.0%	0	0.0%	-	-	-	-
	FTTR	364	0	0.0%	78	21.4%	183	50.3%	225	61.8%	-	-	-	-
	PTTR	141	0	0.0%	3	2.1%	21	14.9%	34	24.1%	-	-	-	-
	Total	1,138	0	0.0%	81	7.1%	211	18.5%	563	49.5%	-	-	-	-
2002	FTFTF	684	0	0.0%	0	0.0%	5	0.7%	-	-	-	-	-	-
	PTFTF	3	0	0.0%	0	0.0%	0	0.0%	-	-	-	-	-	-
	FTTR	433	3	0.7%	101	23.3%	221	51.0%	-	-	-	-	-	-
	PTTR	135	0	0.0%	6	4.4%	25	18.5%	-	-	-	-	-	-
	Total	1,255	3	0.2%	107	8.5%	251	20.0%	-	-	-	-	-	-
2003	FTFTF	725	0	0.0%	0	0.0%	-	-	-	-	-	-	-	-
	PTFTF	0	0	N/A	0	N/A	-	-	-	-	-	-	-	-
	FTTR	378	2	0.5%	84	22.2%	-	-	-	-	-	-	-	-
	PTTR	120	0	0.0%	7	5.8%	-	-	-	-	-	-	-	-
	Total	1,223	2	0.2%	91	7.4%	-	-	-	-	-	-	-	-
2004	FTFTF	755	0	0.0%	-	-	-	-	-	-	-	-	-	-
	PTFTF	0	0	N/A	-	-	-	-	-	-	-	-	-	-
	FTTR	398	2	0.5%	-	-	-	-	-	-	-	-	-	-
	PTTR	93	0	0.0%	-	-	-	-	-	-	-	-	-	-
	Total	1,246	2	0.2%	-	-	-	-	-	-	-	-	-	-

* FTFTF=full-time, first-time freshmen; PTFTF=part-time, first-time freshmen; FTTR=full-time transfers; and PTTR=part-time transfers.

Data captures all graduates through August 2005.

* 1999 cohort adjusted in fall 2005 from 528 to 524

SIX-YEAR RETENTION BY ADMIT TYPE FOR FULL-TIME, FIRST-TIME FRESHMEN

Fall of Entry	Sub-Cohorts	Original Size	Retained One-Year		Retained Two-Years		Retained Three-Years		Retained Four-Years		Retained Five-Years		Retained Six-Years	
			#	Rate	#	Rate	#	Rate	#	Rate	#	Rate	#	Rate
1995	Regular	183	140	76.5%	113	61.7%	110	60.1%	53	29.0%	14	7.7%	9	4.9%
	EOF	97	74	76.3%	46	47.4%	40	41.2%	32	33.0%	15	15.5%	6	6.2%
	Special	39	33	84.6%	25	64.1%	24	61.5%	14	35.9%	4	10.3%	0	0.0%
	Total	319	247	77.4%	184	57.7%	174	54.5%	99	31.0%	33	10.3%	15	4.7%
1996	Regular	296	239	80.7%	202	68.2%	184	62.2%	102	34.5%	25	8.4%	15	5.1%
	EOF	74	68	91.9%	52	70.3%	46	62.2%	34	45.9%	10	13.5%	6	8.1%
	Special	43	30	69.8%	27	62.8%	25	58.1%	17	39.5%	3	7.0%	1	2.3%
	Total	413	337	81.6%	281	68.0%	255	61.7%	153	37.0%	38	9.2%	22	5.3%
1997	Regular	340	262	77.1%	220	64.7%	212	62.4%	100	29.4%	31	9.1%	15	4.4%
	EOF	67	60	89.6%	52	77.6%	52	77.6%	35	52.2%	9	13.4%	4	6.0%
	Special	47	37	78.7%	34	72.3%	30	63.8%	27	57.4%	5	10.6%	3	6.4%
	Total	454	359	79.1%	306	67.4%	294	64.8%	162	35.7%	45	9.9%	22	4.8%
1998	Regular	352	295	83.8%	271	77.0%	246	69.9%	124	35.2%	35	9.9%	17	4.8%
	EOF	69	57	82.6%	46	66.7%	42	60.9%	23	33.3%	7	10.1%	1	1.4%
	Special	51	40	78.4%	36	70.6%	33	64.7%	20	39.2%	5	9.8%	4	7.8%
	Total	472	392	83.1%	353	74.8%	321	68.0%	167	35.4%	47	10.0%	22	4.7%
1999	Regular	414	330	79.7%	292	70.5%	270	65.2%	104	25.1%	30	7.2%	13	3.1%
	EOF	60	56	93.3%	44	73.3%	41	68.3%	21	35.0%	8	13.3%	4	6.7%
	Special	54	49	90.7%	42	77.8%	37	68.5%	21	38.9%	4	7.4%	1	1.9%
	Total	528	435	82.4%	378	71.6%	348	65.9%	146	27.7%	42	8.0%	18	3.4%
2000	Regular	511	439	85.9%	399	78.1%	380	74.4%	144	28.2%	21	4.1%	-	-
	EOF	64	55	85.9%	50	78.1%	41	64.1%	23	35.9%	3	4.7%	-	-
	Special	63	48	76.2%	41	65.1%	38	60.3%	20	31.7%	7	11.1%	-	-
	Total	638	542	85.0%	490	76.8%	459	71.9%	187	29.3%	31	4.9%	-	-
2001	Regular	497	414	83.3%	370	74.4%	353	71.0%	101	20.3%	-	-	-	-
	EOF	69	60	87.0%	54	78.3%	52	75.4%	24	34.8%	-	-	-	-
	Special	62	51	82.3%	44	71.0%	41	66.1%	15	24.2%	-	-	-	-
	Total	628	525	83.6%	468	74.5%	446	71.0%	140	22.3%	-	-	-	-
2002	Regular	543	485	89.3%	439	80.8%	423	77.9%	-	-	-	-	-	-
	EOF	73	60	82.2%	51	69.9%	46	63.0%	-	-	-	-	-	-
	Special	68	50	73.5%	46	67.6%	43	63.2%	-	-	-	-	-	-
	Total	684	595	87.0%	536	78.4%	512	74.9%	-	-	-	-	-	-
2003	Regular	582	524	90.0%	472	81.1%	-	-	-	-	-	-	-	-
	EOF	70	61	87.1%	47	67.1%	-	-	-	-	-	-	-	-
	Special	73	61	83.6%	59	80.8%	-	-	-	-	-	-	-	-
	Total	725	646	89.1%	578	79.7%	-	-	-	-	-	-	-	-
2004	Regular	610	549	90.0%	-	-	-	-	-	-	-	-	-	-
	EOF	69	63	91.3%	-	-	-	-	-	-	-	-	-	-
	Special	76	62	81.6%	-	-	-	-	-	-	-	-	-	-
	Total	755	674	89.3%	-	-	-	-	-	-	-	-	-	-

TEN-YEAR CUMULATIVE GRADUATION RATES BY ADMIT TYPE FOR FULL-TIME, FIRST-TIME FRESHMEN

Fall of Entry	Sub-Cohorts	Original Size	Four-Year Cumulative Graduation [1]		Five-Year Cumulative Graduation		Six-Year Cumulative Graduation		Seven-Year Cumulative Graduation		Eight-Year Cumulative Graduation		Nine-Year Cumulative Graduation		Ten-Year Cumulative Graduation	
			#	Rate	#	Rate	#	Rate	#	Rate	#	Rate	#	Rate	#	Rate
1990	Regular	274	55	20.1%	98	35.8%	104	38.0%	108	39.4%	110	40.1%	112	40.9%	112	40.9%
	EOF	100	3	3.0%	13	13.0%	20	20.0%	24	24.0%	24	24.0%	24	24.0%	25	25.0%
	Special	47	3	6.4%	8	17.0%	8	17.0%	9	19.1%	9	19.1%	10	21.3%	10	21.3%
	Total	421	61	14.5%	119	28.3%	132	31.4%	141	33.5%	143	34.0%	146	34.7%	147	34.9%
1991	Regular	298	57	19.1%	119	39.9%	131	44.0%	135	45.3%	135	45.3%	137	46.0%	137	46.0%
	EOF	85	3	3.5%	11	12.9%	14	16.5%	17	20.0%	17	20.0%	18	21.2%	18	21.2%
	Special	42	9	21.4%	13	31.0%	16	38.1%	18	42.9%	18	42.9%	18	42.9%	19	45.2%
	Total	425	69	16.2%	143	33.6%	161	37.9%	170	40.0%	170	40.0%	173	40.7%	174	40.9%
1992	Regular	279	71	25.4%	126	45.2%	136	48.7%	139	49.8%	142	50.9%	142	50.9%	142	50.9%
	EOF	98	2	2.0%	16	16.3%	21	21.4%	22	22.4%	22	22.4%	22	22.4%	22	22.4%
	Special	42	4	9.5%	10	23.8%	15	35.7%	16	38.1%	16	38.1%	16	38.1%	16	38.1%
	Total	419	77	18.4%	152	36.3%	172	41.1%	177	42.2%	180	43.0%	180	43.0%	180	43.0%
1993	Regular	240	58	24.2%	105	43.8%	111	46.3%	113	47.1%	113	47.1%	113	47.1%	113	47.1%
	EOF	83	1	1.2%	8	9.6%	13	15.7%	15	18.1%	16	19.3%	16	19.3%	16	19.3%
	Special	39	3	7.7%	14	35.9%	17	43.6%	17	43.6%	17	43.6%	17	43.6%	19	48.7%
	Total	362	62	17.1%	127	35.1%	141	39.0%	145	40.1%	146	40.3%	146	40.3%	148	40.9%
1994	Regular	217	60	27.6%	100	46.1%	111	51.2%	115	53.0%	115	53.0%	117	53.9%	117	53.9%
	EOF	90	6	6.7%	23	25.6%	25	27.8%	26	28.9%	26	28.9%	26	28.9%	26	28.9%
	Special	36	7	19.4%	17	47.2%	19	52.8%	20	55.6%	20	55.6%	20	55.6%	20	55.6%
	Total	343	73	21.3%	140	40.8%	155	45.2%	161	46.9%	161	46.9%	163	47.5%	163	47.5%
1995	Regular	183	52	28.4%	95	51.9%	98	53.6%	99	54.1%	100	54.6%	101	55.2%	101	55.2%
	EOF	97	4	4.1%	17	17.5%	27	27.8%	30	30.9%	32	33.0%	33	34.0%	33	34.0%
	Special	39	11	28.2%	21	53.8%	24	61.5%	24	61.5%	24	61.5%	24	61.5%	24	61.5%
	Total	319	67	21.0%	133	41.7%	149	46.7%	153	48.0%	156	48.9%	158	49.5%	158	49.5%
1996	Regular	296	87	29.4%	155	52.4%	169	57.1%	172	58.1%	173	58.4%	174	58.8%	-	-
	EOF	74	9	12.2%	27	36.5%	32	43.2%	33	44.6%	34	45.9%	34	45.9%	-	-
	Special	43	6	14.0%	23	53.5%	23	53.5%	23	53.5%	23	53.5%	23	53.5%	-	-
	Total	413	102	24.7%	205	49.6%	224	54.2%	228	55.2%	230	55.7%	231	55.9%	-	-
1997	Regular	340	114	33.5%	172	50.6%	186	54.7%	190	55.9%	194	57.1%	-	-	-	-
	EOF	67	11	16.4%	29	43.3%	34	50.7%	36	53.7%	37	55.2%	-	-	-	-
	Special	47	6	12.8%	21	44.7%	24	51.1%	25	53.2%	25	53.2%	-	-	-	-
	Total	454	131	28.9%	222	48.9%	244	53.7%	251	55.3%	256	56.4%	-	-	-	-
1998	Regular	352	122	34.7%	211	59.9%	231	65.6%	236	67.0%	-	-	-	-	-	-
	EOF	69	15	21.7%	33	47.8%	37	53.6%	37	53.6%	-	-	-	-	-	-
	Special	51	13	25.5%	23	45.1%	26	51.0%	26	51.0%	-	-	-	-	-	-
	Total	472	150	31.8%	267	56.6%	294	62.3%	299	63.3%	-	-	-	-	-	-
1999	Regular	414	172	41.5%	235	56.8%	252	60.9%	-	-	-	-	-	-	-	-
	EOF	60	20	33.3%	27	45.0%	30	50.0%	-	-	-	-	-	-	-	-
	Special	54	11	20.4%	26	48.1%	29	53.7%	-	-	-	-	-	-	-	-
	Total	528	203	38.4%	288	54.5%	311	59.4%	-	-	-	-	-	-	-	-
2000	Regular	511	250	48.9%	341	66.7%	-	-	-	-	-	-	-	-	-	-
	EOF	64	16	25.0%	31	48.4%	-	-	-	-	-	-	-	-	-	-
	Special	63	18	28.6%	30	47.6%	-	-	-	-	-	-	-	-	-	-
	Total	638	284	44.5%	402	63.0%	-	-	-	-	-	-	-	-	-	-
2001	Regular	497	265	53.3%	-	-	-	-	-	-	-	-	-	-	-	-
	EOF	69	18	26.1%	-	-	-	-	-	-	-	-	-	-	-	-
	Special	62	21	33.9%	-	-	-	-	-	-	-	-	-	-	-	-
	Total	628	304	48.4%	-	-	-	-	-	-	-	-	-	-	-	-

[1] Includes all from cohort who are graduated in fewer than four years.