

SECTION VI:

STUDENT SERVICES

2004 INSTITUTIONAL PROFILE

**CAHILL CENTER
COOPERATIVE EDUCATION**

	00/01	01/02	02/03	03/04	04/05	Percent Change 00/01 to 04/05	Percent Change 03/04 to 04/05
Number of Employers	245	243	271	263	249	1.6%	-5.3%
Number of Students:							
Female	167	170	189	196	198	18.6%	1.0%
Male	<u>164</u>	<u>113</u>	<u>143</u>	<u>163</u>	<u>129</u>	<u>-21.3%</u>	<u>-20.9%</u>
Total Students	331	283	332	359	327	-1.2%	-8.9%
Dollars Earned	\$1,675,722	\$1,034,756	\$1,256,294	\$1,115,347	\$1,105,414	-34.0%	-0.9%
Credits Earned	1,371	1,137	1,290	1,365	1,218	-11.2%	-10.8%

CAREER SERVICES

	00/01	01/02	02/03	03/04	04/05	Percent Change 00/01 to 04/05	Percent Change 03/04 to 04/05
Course Participants	129	140	133	151	133	3.10%	-11.92%
Job Fair Participants	975	950	1250	1200	900	-7.69%	-25.00%

STUDENT ASSISTANT PROGRAM

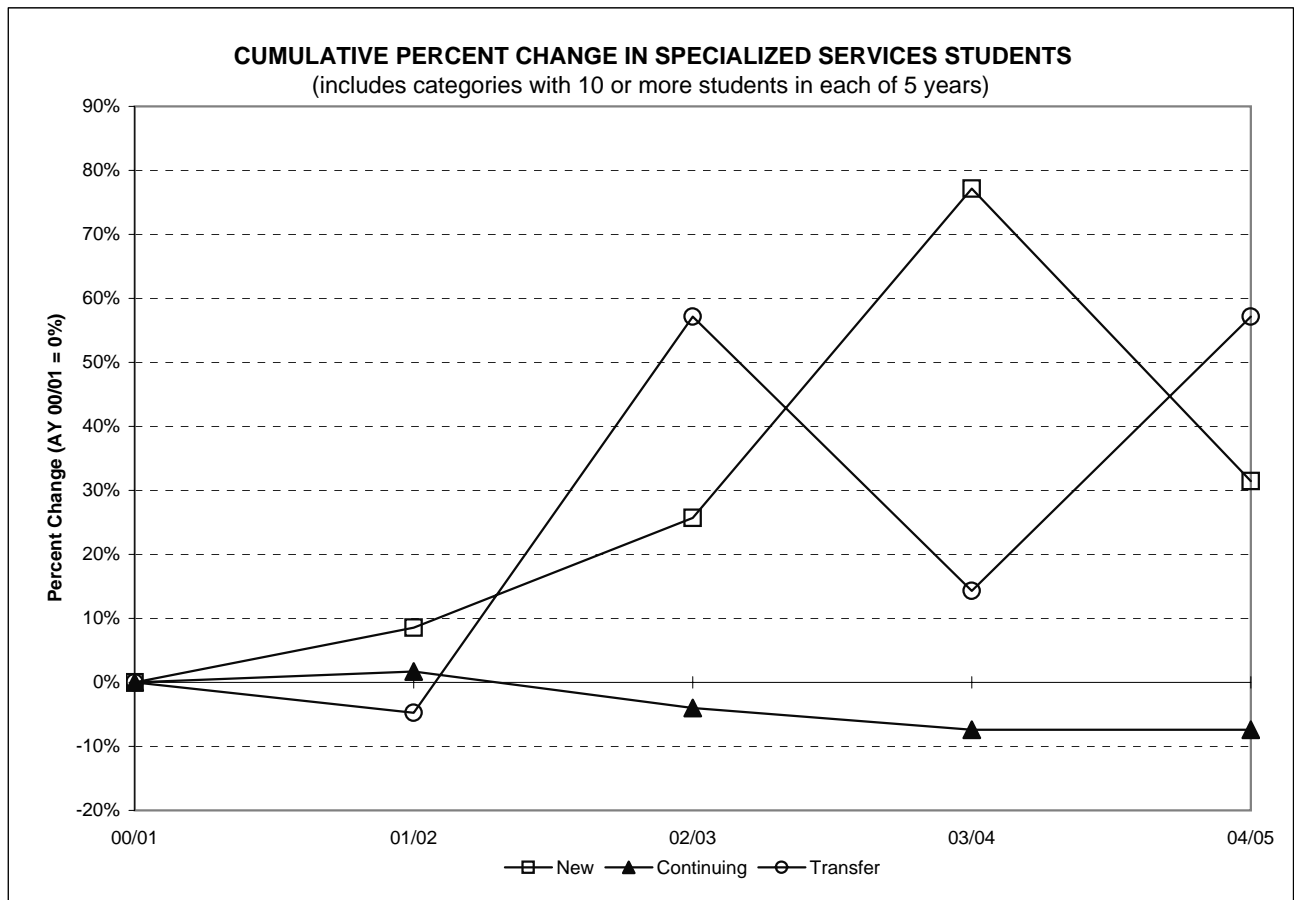
	00/01	01/02	02/03	03/04	04/05	Percent Change 00/01 to 04/05	Percent Change 03/04 to 04/05
Student Workers [1]	480	491	711	706	782	62.92%	10.76%

[1] The Cahill Center acquired responsibility in 2002 for managing students assigned to perform special projects for faculty.

SPECIALIZED SERVICES

Students	00/01	01/02	02/03	03/04	04/05	Percent Change	Percent Change
						00/01 to 04/05	03/04 to 04/05
New [1]	35	38	44	62	46	31.4%	-25.8%
Continuing	176	179	169	163	163	-7.4%	0.0%
Transfer	21	20	33	24	33	57.1%	37.5%
Re-Admits	2	0	1	3	1	-50.0%	-66.7%
Total	234	237	247	252	243	3.8%	-3.6%

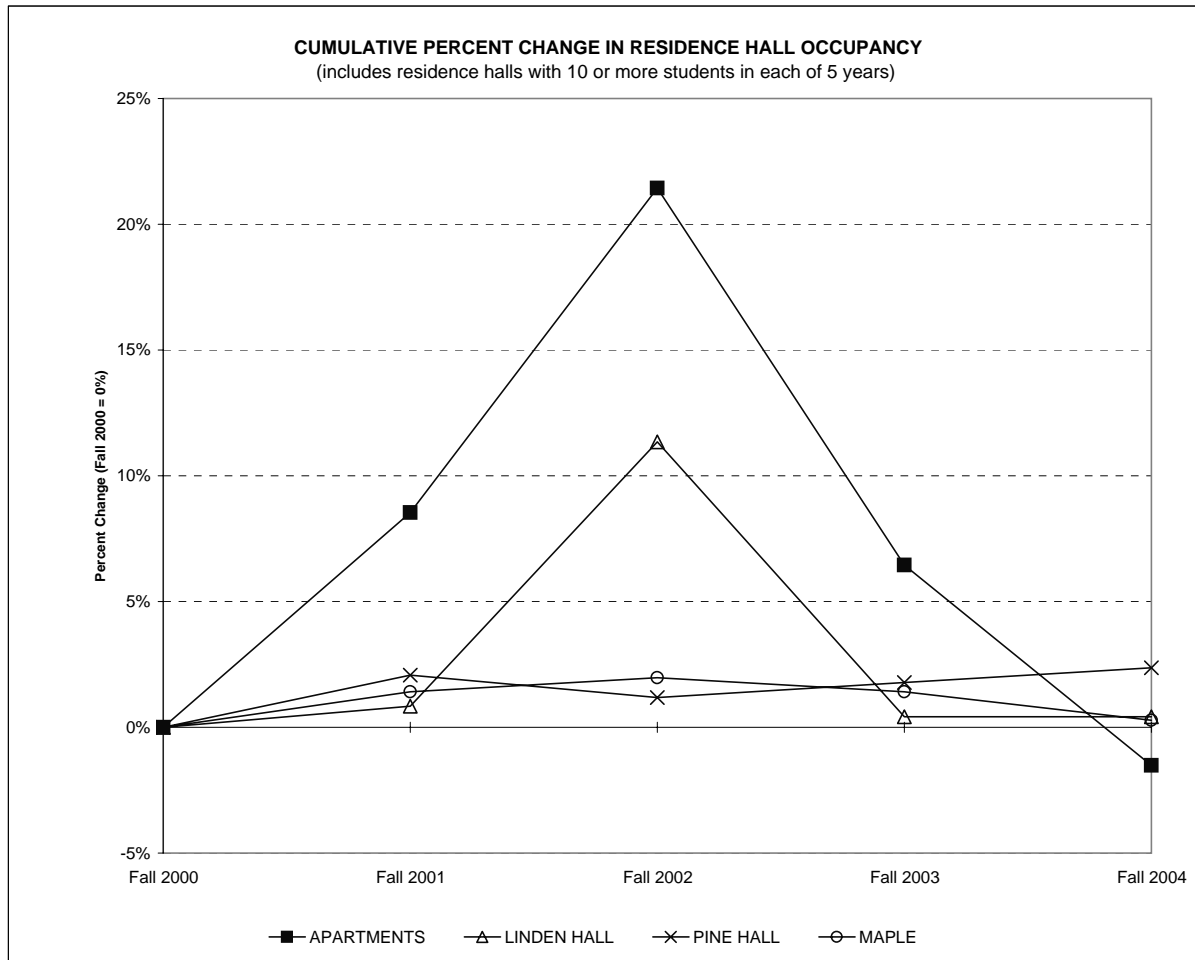
[1] Includes students already enrolled at Ramapo College for one or more semesters, but new to the Office of Specialized Services, and new first-time freshmen.



FALL SEMESTER RESIDENCE HALL OCCUPANCY, 1999 TO 2003 [1]

	Fall 2000		Fall 2001		Fall 2002		Fall 2003		Fall 2004		Percent Change 00 to 04	Percent Change 03 to 04
	Number	Percent	Number	Percent	Number	Percent	Number	Percent	Number	Percent		
APARTMENTS	527	30.8%	572	30.1%	640	31.0%	561	24.7%	519	20.8%	-1.5%	-7.5%
LINDEN HALL	238	13.9%	240	12.6%	265	12.8%	239	10.5%	239	9.6%	0.4%	0.0%
LODGE	14	0.8%	14	0.7%	17	0.8%	7	0.3%	0	0.0%	-100.0%	-100.0%
OAK	241	14.1%	238	12.5%	248	12.0%	240	10.6%	241	9.7%	0.0%	0.4%
MAPLE	354	20.7%	359	18.9%	361	17.5%	359	15.8%	355	14.2%	N/A	-1.1%
PINE HALL	338	19.7%	345	18.1%	342	16.6%	344	15.1%	346	13.9%	2.4%	0.6%
OVERFLOW/HOTEL	-	-	135	7.1%	1	0.0%	-	-	-	-	N/A	N/A
VILLAGE	-	-	-	-	191	9.2%	523	23.0%	513	20.5%	N/A	-1.9%
THE OVERLOOK	-	-	-	-	-	-	-	-	284	11.4%	N/A	N/A
TOTAL	1,712		1,903		2,065		2,273		2,497		45.9%	9.9%

[1] Occupancy as of the 10th day of the semester as reported in the Registrar's



FINANCING FOR RESIDENCE LIFE, STUDENT CENTER, AND EDUCATIONAL PROJECTS [1]

New Jersey Educational Facilities Bond	Name	Interest Rate	Outstanding	Outstanding	Outstanding	Year Paid in Full
			Principal Payments Jun-02 (000)	Principal Payments Jun-03 (000)	Principal Payments Jun-04 (000)	
<u>Residence Life</u>						
Series 1973A	Phase I	5.300% to 5.600%	\$225	\$115	\$0	2003
Series 1993E [2]	Pine & Linden	3.500% to 5.500%	\$12,415	\$0	\$0	n/a
Series 1998G	Oak Hall/Pavilion	4.100% to 4.625%	\$16,150	\$15,830	\$15,500	2028
Series 1999E [4]	Maple Hall/Pavilion Expansion	5.250% to 5.600%	\$19,900	\$19,580	\$2,420	2029
Series 2001D	The Village/Apt. Wiring	4.800% to 5.000%	\$40,480	\$40,480	\$40,480	2031
Series 2002H	Village Completion/Overlook	2.500% to 5.000%	\$0	\$28,655	\$28,610	2032
Series 2003G [2]	Pine & Linden	2.000% to 3.709%	\$0	\$9,300	\$9,300	2013
Series 2003H [4]	Oak Hall/Pavilion/Phase I Renov.	4.250% to 5.000%	\$0	\$0	\$18,930	2029
<u>Student Center</u>						
Series 1993D [3]	Student Center Annex	3.500% to 5.500%	\$2,285	\$0	\$0	n/a
Series 1998H	Student Center Renovations	4.100% to 4.600%	\$1,745	\$1,630	\$1,510	2013
Series 2002I	Student Center Renovations	2.500% to 5.00%	\$0	\$2,145	\$2,085	2032
Series 2003F [3]	Student Center Annex	1.500% to 3.500%	\$0	\$1,820	\$1,820	2013
<u>Educational & General</u>						
Series 1997A	Berrie Center	4.900% to 5.150%	\$7,330	\$0	\$0	2003
Series 1998I	Voice, Video, Data	4.100% to 4.500%	\$735	\$645	\$550	2008
Series 2000B	Higher Ed Capital Bond Fund	4.500% to 5.750%	\$2,468	\$2,387	\$2,305	2021
Series 2001A	Dormitory Safety		\$964	\$895	\$826	2016
Series 2001E	Sustainability Center/Equip.	3.600% to 4.000%	\$2,535	\$2,225	\$1,885	2008
Series 2002A	Higher Ed Capital Bond Fund	3.00% to 5.250%	\$0	\$1,849	\$1,850	2023
Series 2002J	Bradley Center/Havemeyer House	2.500% to 5.00%	\$0	\$29,620	\$29,580	2032
Series 2003A	Equipment Leasing Fund	2.500% to 5.00%	\$0	\$467	\$467	2010
			<u>\$107,232</u>	<u>\$157,643</u>	<u>\$158,118</u>	

[1] The College has pledged all revenues generated from the operation of the residential facilities, the student center building and from other legally available funds of the College under the aforementioned capital lease agreements.

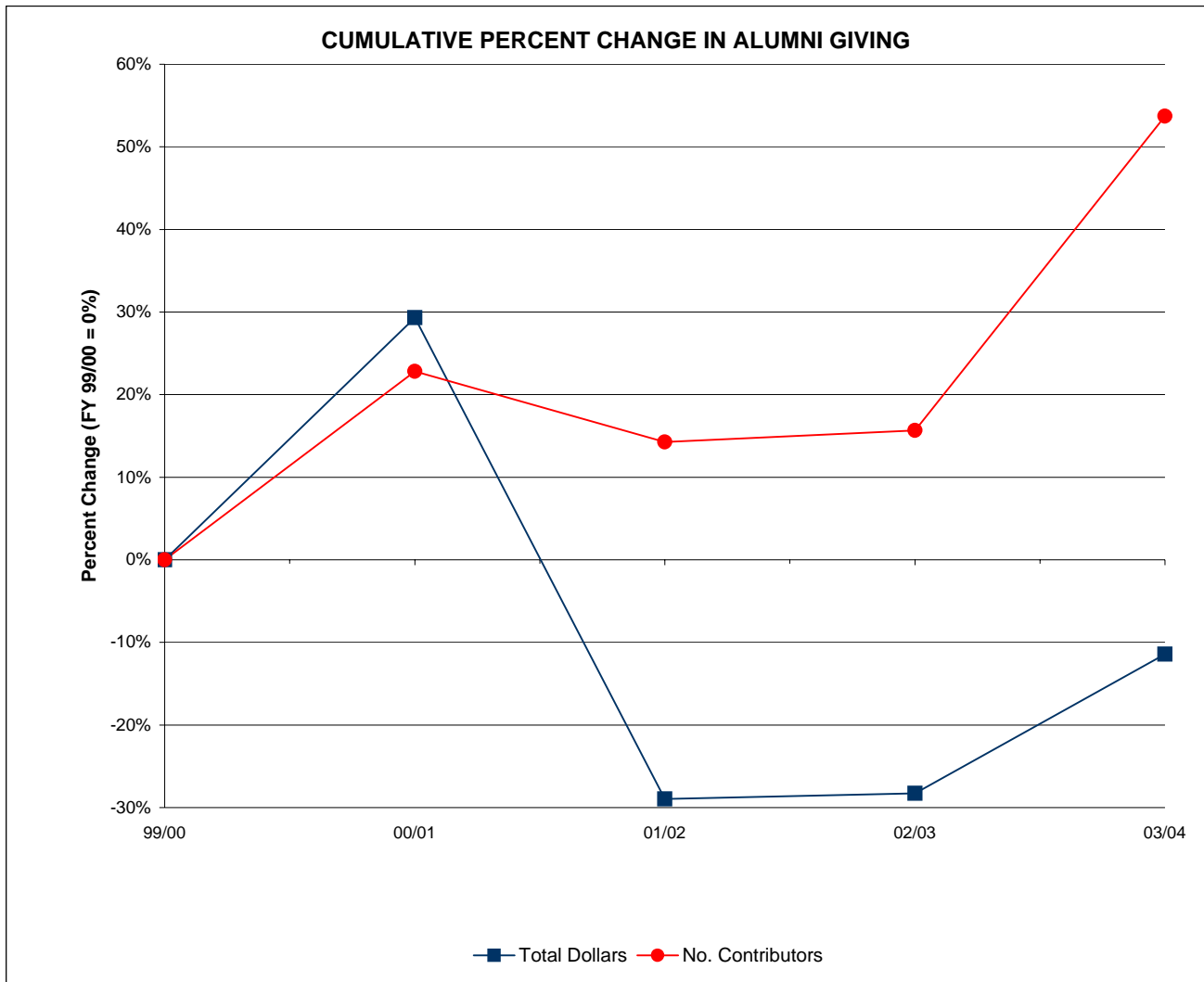
[2] Series 2003G replaced series 1993E through refinancing.

[3] Series 2003F replaced series 1993D through refinancing.

[4] Series 2003H partially replaced series 1999E through refinancing.

ALUMNI GIVING, FISCAL YEAR 2000 TO FISCAL YEAR 2004

Giving	99/00	00/01	01/02	02/03	03/04	Percent Change	Percent Change
						99/00 to 03/04	02/03 to 03/04
Total Dollars	\$133,056	\$172,080	\$94,548	\$95,423	\$117,854	-11.4%	23.5%
Number of Donors	1,065	1,308	1,217	1,232	1,637	53.7%	32.9%
Average Alumni Donation	\$124.94	\$131.56	\$77.69	\$77.46	\$71.99	-42.4%	-7.1%
Number of Alumni Solicited	12,219	14,718	15,047	15,384	15,825	29.5%	2.9%
Phonathon New Donors	249	375	326	346	351	41.0%	1.4%

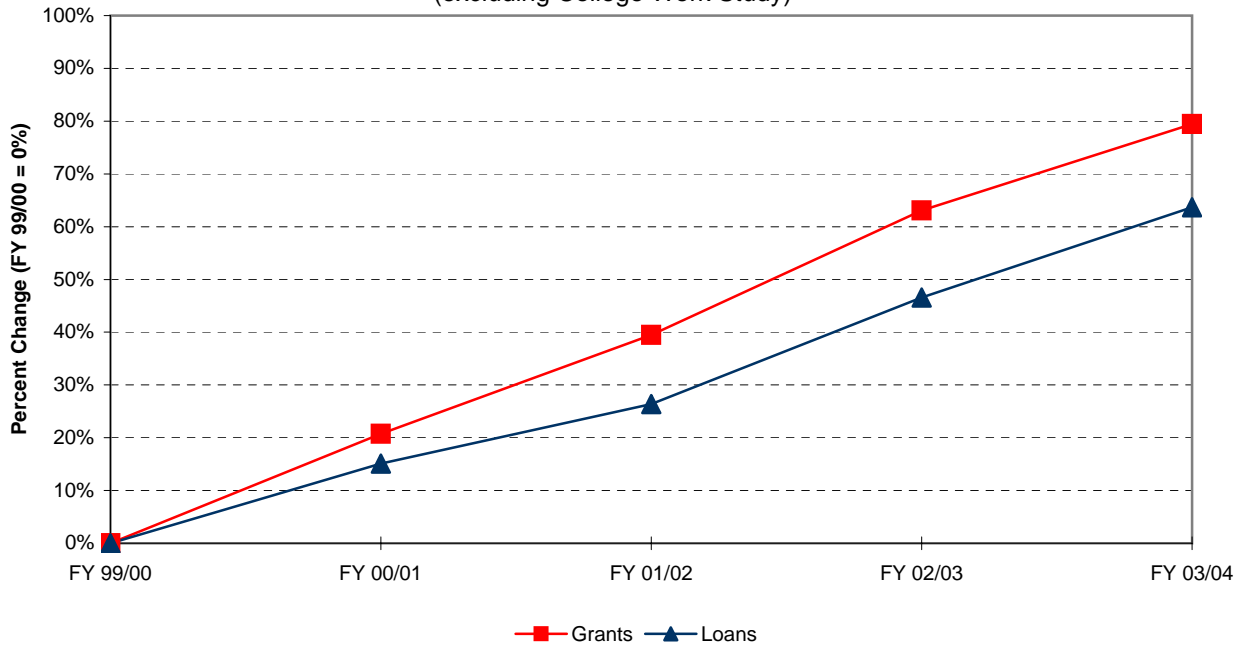


STUDENT FINANCIAL AID, FY 2000 TO FY 2004

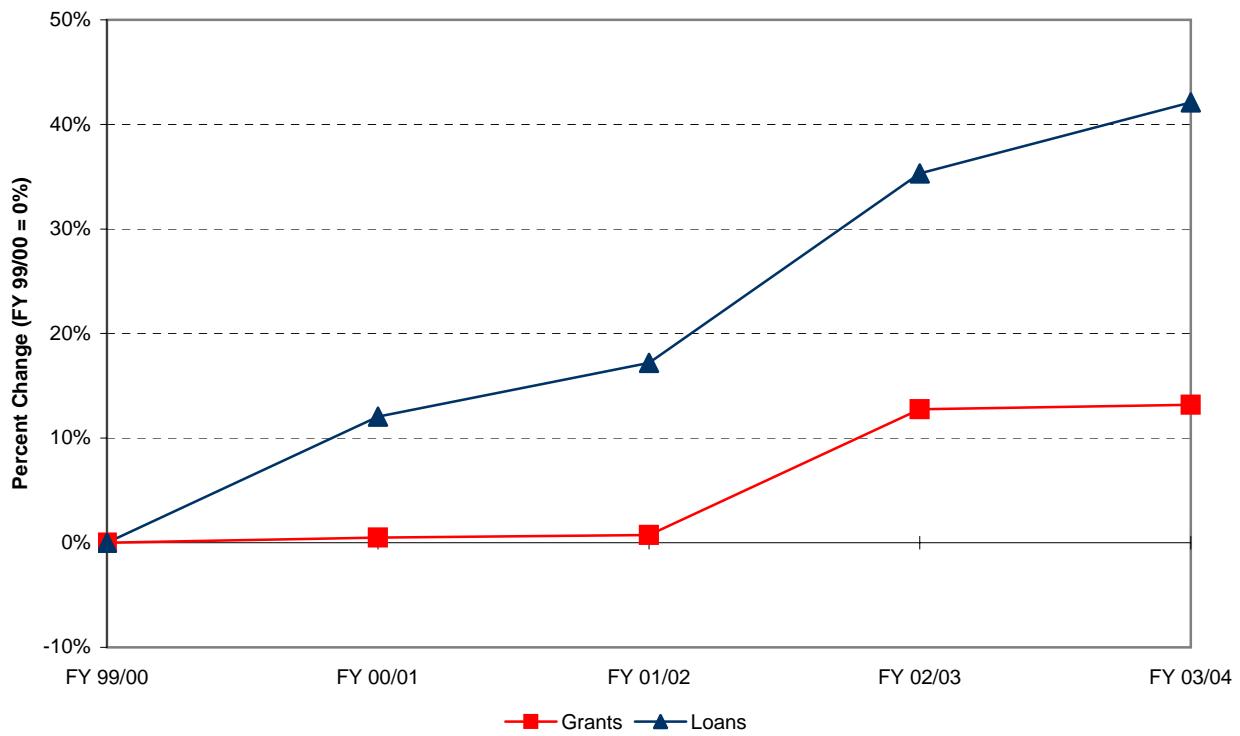
<i>Financial Aid Dollars</i>	FY 99/00	FY 00/01	FY 01/02	FY 02/03	FY 03/04	Percent Change	Percent Change
	\$	\$	\$	\$	\$	99/00 to 03/04	02/03 to 03/04
Pell Grants	\$1,686,455	\$1,929,106	\$2,190,637	\$2,401,840	\$2,514,153	49.1%	4.7%
College Work Study	\$201,236	\$212,131	\$195,703	\$250,195	\$193,790	-3.7%	-22.5%
Perkins Loans	\$97,052	\$110,164	\$114,784	\$192,813	\$159,703	64.6%	-17.2%
Stafford Loans (total)	\$7,289,817	\$8,196,464	\$8,796,481	\$9,564,939	\$10,251,425	40.6%	7.2%
Subsidized	\$4,352,799	\$4,776,631	\$5,081,336	\$5,761,135	\$6,392,347	46.9%	11.0%
Un-subsidized	\$2,937,018	\$3,419,833	\$3,715,145	\$3,803,804	\$3,859,078	31.4%	1.5%
SEOG	\$215,222	\$214,980	\$22,855	\$233,320	\$237,350	10.3%	1.7%
Parents Loans for Dependent Students (PLUS)	\$581,417	\$866,790	\$1,160,592	\$1,921,468	\$2,632,337	352.7%	37.0%
Ramapo College Grant	\$337,779	\$379,902	\$403,702	\$470,677	\$498,888	47.7%	6.0%
TAG	\$1,818,435	\$2,210,396	\$2,360,593	\$2,440,560	\$2,574,564	41.6%	5.5%
Educational Opportunity Fund (EOF)	\$311,891	\$353,411	\$292,505	\$318,206	\$315,499	1.2%	-0.9%
New Jersey Class Loans	\$902,439	\$1,254,686	\$1,941,112	\$2,541,377	\$3,077,285	241.0%	21.1%
Total	\$13,441,743	\$15,728,030	\$17,478,964	\$20,335,395	\$22,454,994	67.1%	10.4%

<i>Financial Aid Recipients</i>	FY 99/00	FY 00/01	FY 01/02	FY 02/03	FY 03/04	Percent Change	Percent Change
	#	#	#	#	#	99/00 to 03/04	02/03 to 03/04
Pell Grants	831	866	854	924	951	14.4%	2.9%
College Work Study	191	187	172	201	127	-33.5%	-36.8%
Perkins Loans	85	96	95	163	128	50.6%	-21.5%
Stafford Loans (total)	2,095	2,317	2,413	2,649	2,783	32.8%	5.1%
Subsidized	1,244	1,355	1,422	1,597	1,703	36.9%	6.6%
Un-subsidized	851	962	991	1,052	1,080	26.9%	2.7%
SEOG	191	191	195	222	211	10.5%	-5.0%
Parents Loans for Dependent Students (PLUS)	117	161	184	296	353	201.7%	19.3%
Ramapo College Grant	279	163	95	160	109	-60.9%	-31.9%
TAG	736	775	785	819	827	12.4%	1.0%
Educational Opportunity Fund (EOF)	268	278	276	267	264	-1.5%	-1.1%
New Jersey Class Loans	148	201	272	339	375	153.4%	10.6%
Total	4,941	5,235	5,341	6,040	6,128	24.0%	1.5%

CUMULATIVE PERCENT CHANGE IN FINANCIAL AID DOLLARS BY SOURCE
(excluding College Work Study)



CUMULATIVE PCT. CHANGE IN NO. OF FINANCIAL AID RECIPIENTS BY SOURCE
(excluding College Work Study)



CAMPUS SECURITY ANNUAL REPORT [1]

Reported Occurrences	98/99	99/00	00/01	01/02	02/03	Percent Change 98/99 to 02/03	Percent Change 01/02 to 02/03
	Criminal Homicide	0	0	0	0	0	N/A
<i>Sexual Offenses:</i>							
Forcible: Rape, Sodomy, Assault (with an object), Fondling	1	6	3	7	4	300.0%	-42.9%
Non-Forcible: Incest, Statutory Rape	0	0	0	0	0	N/A	N/A
Robbery	0	0	0	2	0	N/A	-100.0%
Aggravated Assault	11	5	2	1	2	-81.8%	100.0%
Burglary	20	23	22	21	11	-45.0%	-47.6%
Motor Vehicle Theft	0	0	2	4	1	N/A	-75.0%
Arrests:							
Weapon Law Violation	1	0	0	0	2	100.0%	N/A
Drug Abuse Violation	6	16	19	7	12	100.0%	71.4%
Liquor Law Violation	0	3	0	0	0	N/A	N/A

[1] Crime statistics reported using FBI definitions. Figures are most current available.

STUDENT PARTICIPATION IN STUDY ABROAD AND OTHER OFF-CAMPUS PROGRAMS, 2001 TO 2005 [1]

All Students	AY 00-01		AY 01-02		AY 02-03		AY 03-04		AY 04-05		Percent Change 00/01 to 04/05	Percent Change 03/04 to 04/05
	No.	Pct.	No.	Pct.	No.	Pct.	No.	Pct.	No.	Pct.		
American Southwest	15	9.7%	11	6.2%	14	7.8%	21	11.7%	19	8.6%	26.7%	-9.5%
American West [2]	9	5.8%	18	10.2%	8	4.5%	11	6.1%	9	4.1%	0.0%	-18.2%
Australia [3]	-	-	-	-	-	-	3	1.7%	6	2.7%	N/A	100.0%
China	0	0.0%	20	11.3%	0	0.0%	0	0.0%	0	0.0%	N/A	N/A
Costa Rica [4]	34	21.9%	31	17.5%	29	16.2%	22	12.3%	21	9.5%	-38.2%	-4.5%
England [5]	50	32.3%	30	16.9%	63	35.2%	84	46.9%	52	23.5%	4.0%	-38.1%
India [6]	-	-	-	-	-	-	13	7.3%	10	4.5%	N/A	-23.1%
Ireland	18	11.6%	21	11.9%	19	10.6%	38	21.2%	0	0.0%	-100.0%	-100.0%
Israel	1	0.6%	0	0.0%	0	0.0%	0	0.0%	0	0.0%	-100.0%	N/A
Italy [7]	4	2.6%	12	6.8%	0	0.0%	3	1.7%	40	18.1%	900.0%	1233.3%
Jamaica	-	-	16	9.0%	16	8.9%	16	8.9%	0	0.0%	N/A	-100.0%
Prague	13	8.4%	7	4.0%	10	5.6%	6	3.4%	8	3.6%	-38.5%	33.3%
Quebec City	0	0.0%	2	1.1%	3	1.7%	2	1.1%	3	1.4%	N/A	50.0%
South Africa [8]	-	-	-	-	10	5.6%	0	0.0%	0	0.0%	N/A	N/A
Washington D.C. Internship [9]	-	-	-	-	2	1.1%	2	1.1%	1	0.5%	N/A	-50.0%
Other Programs [10]	11	7.1%	9	5.1%	5	-	0	0.0%	2	0.9%	-81.8%	N/A
Total	155		177		179		221		171			

- [1] These numbers include students from both Ramapo College and other campuses.
- [2] American West AY 03-04 headcount increased from 10 to 11 due to student who registered after publication of Fall 2003 Institutional Profile.
- [3] The Australia program is a credit-bearing semester sponsored by Ramapo as of 2004.
- [4] The Costa Rica program includes credit-bearing trips (the Intensa Spanish Language program and the Eco-Program).
- [5] The England program includes credit-bearing trips as well as the Regent's program semester study.
- [6] The India program is a credit-bearing semester sponsored by Ramapo as of 2004.
- [7] The Italy program includes credit bearing trips to Rome or Matera.
- [8] The South African program includes credit-bearing trips sponsored by Ramapo as of 2001.
- [9] The Washington DC program is a credit-bearing semester sponsored by Ramapo. Previously it was included in "Other".
- [10] Represents Ramapo College student participation in non-Ramapo sponsored programs.

