

SECTION IV:

DEGREES AWARDED AND

STUDENT OUTCOMES

2004 INSTITUTIONAL PROFILE

TOTAL 2003-04 DEGREES AWARDED = 1,106

By Age

	Bachelor's		Master's		Total	
Less than 20	0	0.0%	0	0.0%	0	0.0%
20 to 24	652	64.6%	1	1.0%	653	59.0%
25 to 29	208	20.6%	29	30.2%	237	21.4%
30 to 39	76	7.5%	38	39.6%	114	10.3%
Greater than 39	74	7.3%	28	29.2%	102	9.2%
	1,010		96		1,106	

By Sex

	Bachelor's		Master's		Total	
Female	604	59.8%	48	50.0%	652	59.0%
Male	406	40.2%	48	50.0%	454	41.0%
	1,010		96		1,106	

By Ethnicity

	Bachelor's		Master's		Total	
American Indian/Native Alaskan	1	0.1%	0	0.0%	1	0.1%
Asian/Pacific Islander	54	5.3%	9	9.4%	63	5.7%
Black, non-Hispanic	61	6.0%	2	2.1%	63	5.7%
Hispanic	61	6.0%	1	1.0%	62	5.6%
White, non-Hispanic	833	82.5%	84	87.5%	917	82.9%
	1,010		96		1,106	

By Citizenship

	Bachelor's		Master's		Total	
U.S. Citizen/Permanent Resident	969	95.9%	92	95.8%	1,061	95.9%
non-Citizen/non-Resident	41	4.1%	4	4.2%	45	4.1%
	1,010		96		1,106	

By Ethnicity and Citizenship

	Bachelor's		Master's		Total	
American Indian/Native Alaskan	1	0.1%	0	0.0%	1	0.1%
Asian/Pacific Islander	37	3.7%	7	7.3%	44	4.0%
Black, non-Hispanic	57	5.6%	2	2.1%	59	5.3%
Hispanic	59	5.8%	1	1.0%	60	5.4%
White, non-Hispanic	815	80.7%	82	85.4%	897	81.1%
Nonresident Alien	41	4.1%	4	4.2%	45	4.1%
	1,010		96		1,106	

By Status When First Admitted

	Bachelor's		Master's		Total	
Regular Admit	442	43.8%	96	100.0%	538	48.6%
Special Admit	35	3.5%	0	0.0%	35	3.2%
EOF Admit	34	3.4%	0	0.0%	34	3.1%
Transfer Admit	489	48.4%	0	0.0%	489	44.2%
EOF Transfer Admit	10	1.0%	0	0.0%	10	0.9%
	1,010		96		1,106	

By Degree Type

	Bachelor's		Master's		Total	
Bachelor of Arts (BA)	617	61.1%	0	0.0%	617	55.8%
Bachelor of Science (BS)	301	29.8%	0	0.0%	301	27.2%
Bachelor of Science in Nursing (BSN)	62	6.1%	0	0.0%	62	5.6%
Bachelor of Social Work (BSW)	30	3.0%	0	0.0%	30	2.7%
Master of Arts in Liberal Studies (MA)	0	0.0%	9	9.4%	9	0.8%
Master of Business Administration (MBA)	0	0.0%	26	27.1%	26	2.4%
Master of Science in Educational Technology (MS)	0	0.0%	61	63.5%	61	5.5%
	1,010		96		1,106	

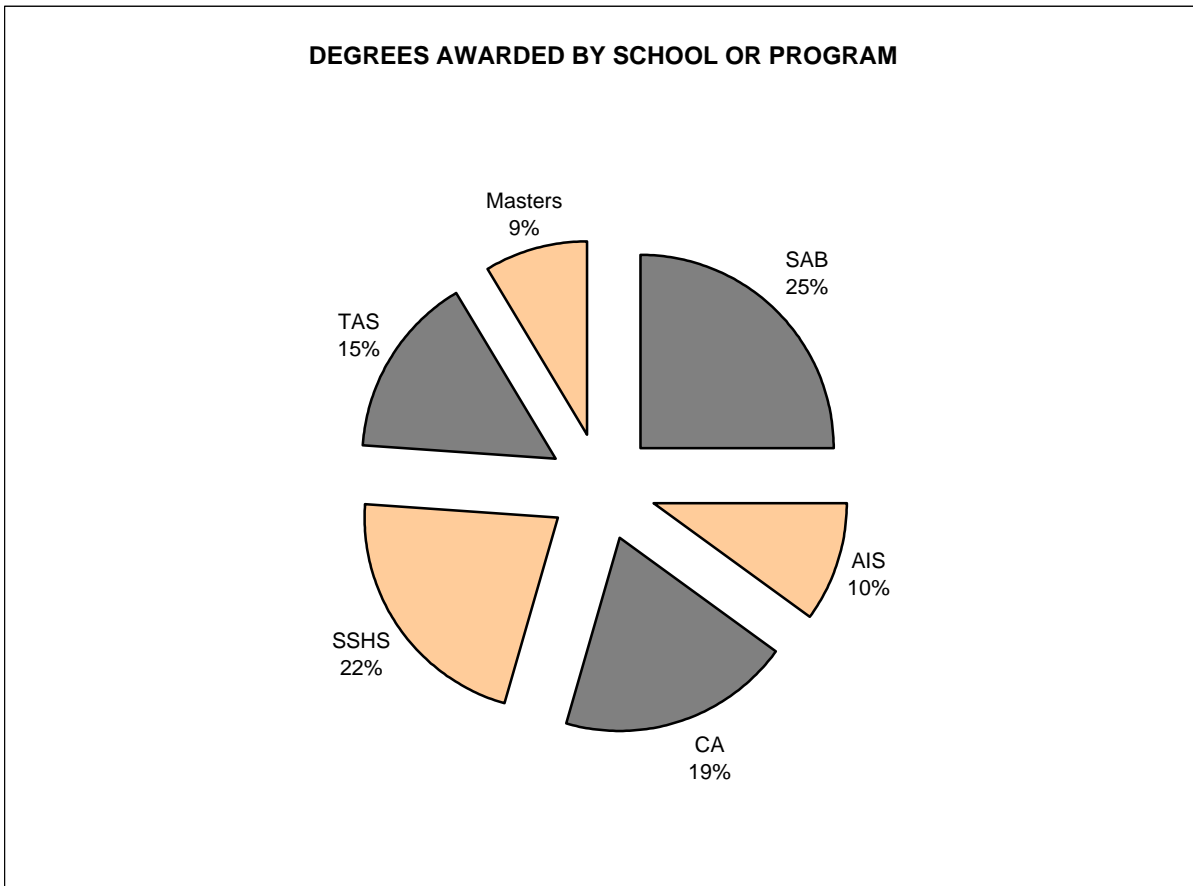
TOTAL 2003-04 DEGREES AWARDED = 1,106

	Bachelor of Arts (BA)		Bachelor of Science (BS)		Bachelor of Science in Nursing (BSN)		Bachelor of Social Work (BSW)		Master of Arts in Liberal Studies (MA)		Master of Business Admin. (MBA)		Master of Science in Ed. Tech. (MS)	
	Number	Percent	Number	Percent	Number	Percent	Number	Percent	Number	Percent	Number	Percent	Number	Percent
By Age														
Less than 20	0	0.0%	0	0.0%	0	0.0%	0	0.0%	0	0.0%	0	0.0%	0	0.0%
20 to 24	440	71.3%	182	60.5%	16	25.8%	14	46.7%	0	0.0%	0	0.0%	1	1.6%
25 to 29	125	20.3%	65	21.6%	12	19.4%	6	20.0%	4	44.4%	6	23.1%	19	31.1%
30 to 39	27	4.4%	31	10.3%	14	22.6%	4	13.3%	2	22.2%	11	42.3%	25	41.0%
> 39	25	4.1%	23	7.6%	20	32.3%	6	20.0%	3	33.3%	9	34.6%	16	26.2%
	617		301		62		30		9		26		61	
By Sex														
Female	384	62.2%	139	46.2%	56	90.3%	25	83.3%	6	66.7%	7	26.9%	35	57.4%
Male	233	37.8%	162	53.8%	6	9.7%	5	16.7%	3	33.3%	19	73.1%	26	42.6%
	617		301		62		30		9		26		61	
By Ethnicity														
Am. Ind./Nat. Al.	0	0.0%	1	0.3%	0	0.0%	0	0.0%	0	0.0%	0	0.0%	0	0.0%
Asian/Pac. Is.	14	2.3%	35	11.6%	3	4.8%	2	6.7%	0	0.0%	7	26.9%	2	3.3%
Black, non-Hisp.	35	5.7%	12	4.0%	12	19.4%	2	6.7%	0	0.0%	1	3.8%	1	1.6%
Hispanic	40	6.5%	15	5.0%	4	6.5%	2	6.7%	0	0.0%	0	0.0%	1	1.6%
White, non-Hisp.	528	85.6%	238	79.1%	43	69.4%	24	80.0%	9	100.0%	18	69.2%	57	93.4%
	617		301		62		30		9		26		61	
By Citizenship														
U.S. Citizen	607	98.4%	273	90.7%	60	96.8%	29	96.7%	9	100.0%	22	84.6%	61	100.0%
non-Citizen	10	1.6%	28	9.3%	2	3.2%	1	3.3%	0	0.0%	4	15.4%	0	0.0%
	617		301		62		30		9		26		61	
By Ethnicity & Citizenship														
Am. Ind./Nat. Al.	0	0.0%	1	0.3%	0	0.0%	0	0.0%	0	0.0%	0	0.0%	0	0.0%
Asian/Pac. Is.	10	1.6%	22	7.3%	3	4.8%	2	6.7%	0	0.0%	5	19.2%	2	3.3%
Black, non-Hisp.	34	5.5%	10	3.3%	11	17.7%	2	6.7%	0	0.0%	1	3.8%	1	1.6%
Hispanic	40	6.5%	13	4.3%	4	6.5%	2	6.7%	0	0.0%	0	0.0%	1	1.6%
White, non-Hisp.	523	84.8%	227	75.4%	42	67.7%	23	76.7%	9	100.0%	16	61.5%	57	93.4%
Nonresident Alien	10	1.6%	28	9.3%	2	3.2%	1	3.3%	0	0.0%	4	15.4%	0	0.0%
	617		301		62		30		9		26		61	
By Initial Admit Type														
Regular	296	48.0%	120	39.9%	16	25.8%	10	33.3%	9	100.0%	26	100.0%	61	100.0%
Special	29	4.7%	6	2.0%	0	0.0%	0	0.0%	0	0.0%	0	0.0%	0	0.0%
EOF	23	3.7%	8	2.7%	1	1.6%	2	6.7%	0	0.0%	0	0.0%	0	0.0%
Transfer	262	42.5%	165	54.8%	44	71.0%	18	60.0%	0	0.0%	0	0.0%	0	0.0%
EOF Transfer	7	1.1%	2	0.7%	1	1.6%	0	0.0%	0	0.0%	0	0.0%	0	0.0%
	617		301		62		30		9		26		61	

TOTAL 2003-04 DEGREES AWARDED = 1,106

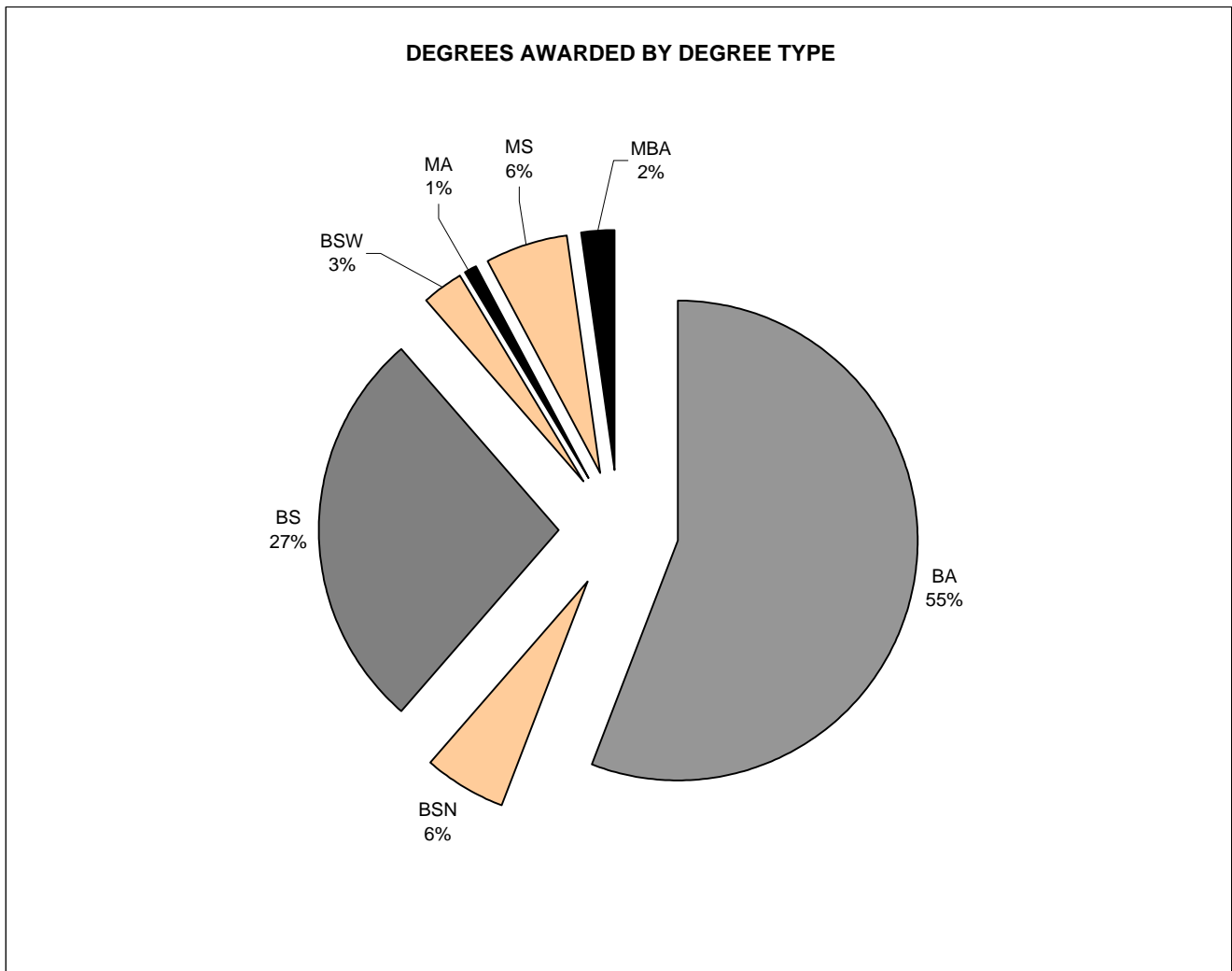
By School and Combined Graduate Programs

Administration and Business	276	25.0%
American and International Studies	112	10.1%
Contemporary Arts	214	19.3%
Social Science and Human Services	240	21.7%
Theoretical and Applied Sciences	168	15.2%
Master's Degree Programs (combined)	96	8.7%



TOTAL 2003-04 DEGREES AWARDED = 1,106

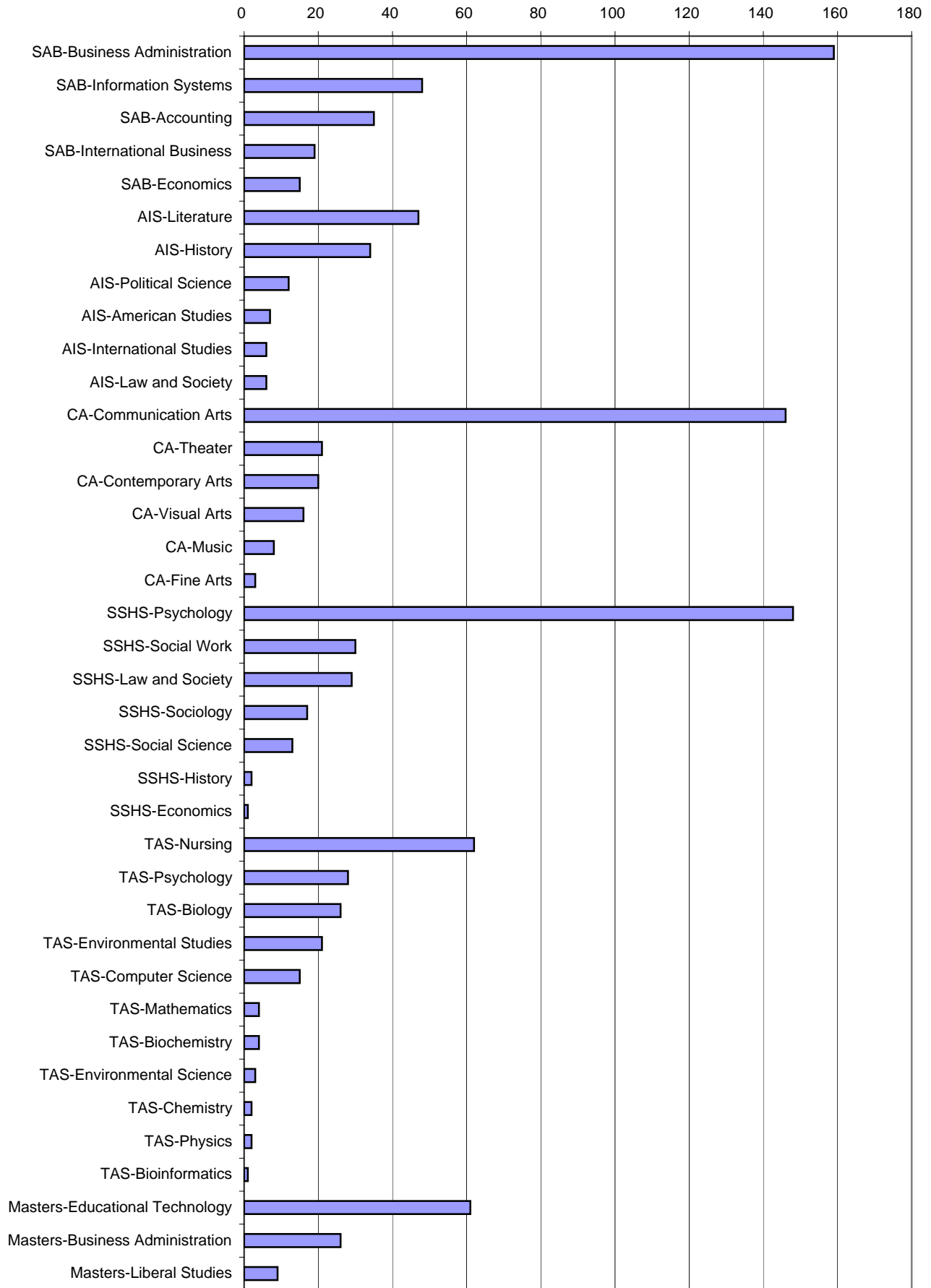
School or Program	BA		BS		BSN		BSW		MA		MBA		MS	
	No.	Pct.	No.	Pct.	No.	Pct.	No.	Pct.	No.	Pct.	No.	Pct.	No.	Pct.
Admin. & Business	34	5.5%	242	80.4%	0	0.0%	0	0.0%	0	0.0%	0	0.0%	0	0.0%
Amer. & Int'l Studies	112	18.2%	0	0.0%	0	0.0%	0	0.0%	0	0.0%	0	0.0%	0	0.0%
Contemporary Arts	214	34.7%	0	0.0%	0	0.0%	0	0.0%	0	0.0%	0	0.0%	0	0.0%
Soc. Sci. & Hum. Serv.	210	34.0%	0	0.0%	0	0.0%	30	100.0%	0	0.0%	0	0.0%	0	0.0%
Theoretical & App. Sci.	47	7.6%	59	19.6%	62	100.0%	0	0.0%	0	0.0%	0	0.0%	0	0.0%
Grad. Liberal Studies	0	0.0%	0	0.0%	0	0.0%	0	0.0%	9	100.0%	0	0.0%	0	0.0%
Grad. Busn. Admn.	0	0.0%	0	0.0%	0	0.0%	0	0.0%	0	0.0%	26	100.0%	0	0.0%
Grad. Educ. Tech.	0	0.0%	0	0.0%	0	0.0%	0	0.0%	0	0.0%	0	0.0%	61	100.0%
	617		301		62		30		9		26		61	



By School and Major (with Graduate Programs)

SAB	Accounting	35	3.2%
	Business Administration	159	14.4%
	Economics	15	1.4%
	Information Systems	48	4.3%
	International Business	19	1.7%
AIS	American Studies	7	0.6%
	History	34	3.1%
	International Studies	6	0.5%
	Law and Society	6	0.5%
	Literature	47	4.2%
	Political Science	12	1.1%
CA	Communication Arts	146	13.2%
	Contemporary Arts	20	1.8%
	Fine Arts	3	0.3%
	Music	8	0.7%
	Theater	21	1.9%
	Visual Arts	16	1.4%
SSHS	Economics	1	0.1%
	History	2	0.2%
	Law and Society	29	2.6%
	Psychology	148	13.4%
	Social Science	13	1.2%
	Social Work	30	2.7%
	Sociology	17	1.5%
TAS	Biochemistry	4	0.4%
	Bioinformatics	1	0.1%
	Biology	26	2.4%
	Chemistry	2	0.2%
	Computer Science	15	1.4%
	Environmental Science	3	0.3%
	Environmental Studies	21	1.9%
	Mathematics	4	0.4%
	Nursing	62	5.6%
	Physics	2	0.2%
	Psychology	28	2.5%
MASTERS	Liberal Studies	9	0.8%
	Business Administration	26	2.4%
	Educational Technology	61	5.5%

DEGREES AWARDED BY SCHOOL AND MAJOR/PROGRAM



TOTAL 2003-04 DEGREES AWARDED = 1,106

By Major or Graduate Program

Accounting	35	3.3%
American Studies	7	0.7%
Biochemistry	4	0.4%
Bioinformatics	1	0.1%
Biology	26	2.4%
Business Administration	159	14.9%
Chemistry	2	0.2%
Communication Arts	146	13.7%
Computer Science	15	1.4%
Contemporary Arts	20	1.9%
Economics [1]	16	1.5%
Environmental Science	3	0.3%
Environmental Studies [2]	21	2.0%
Fine Arts	3	0.3%
History [3]	36	3.4%
Information Systems	48	4.5%
International Business	19	1.8%
International Studies	6	0.6%
Law and Society [4]	35	3.3%
Literature	47	4.4%
Masters in Business Administration	26	2.4%
Masters in Educational Technology	61	5.7%
Masters in Liberal Studies	9	0.8%
Mathematics	4	0.4%
Music	8	0.7%
Nursing	62	5.8%
Physics	2	0.2%
Political Science	12	1.1%
Psychology [5]	176	16.5%
Social Science	13	1.2%
Social Work	30	2.8%
Sociology	17	1.6%
Theater	21	2.0%
Visual Arts	16	1.5%

[1] Includes students from SAB and SSHS.

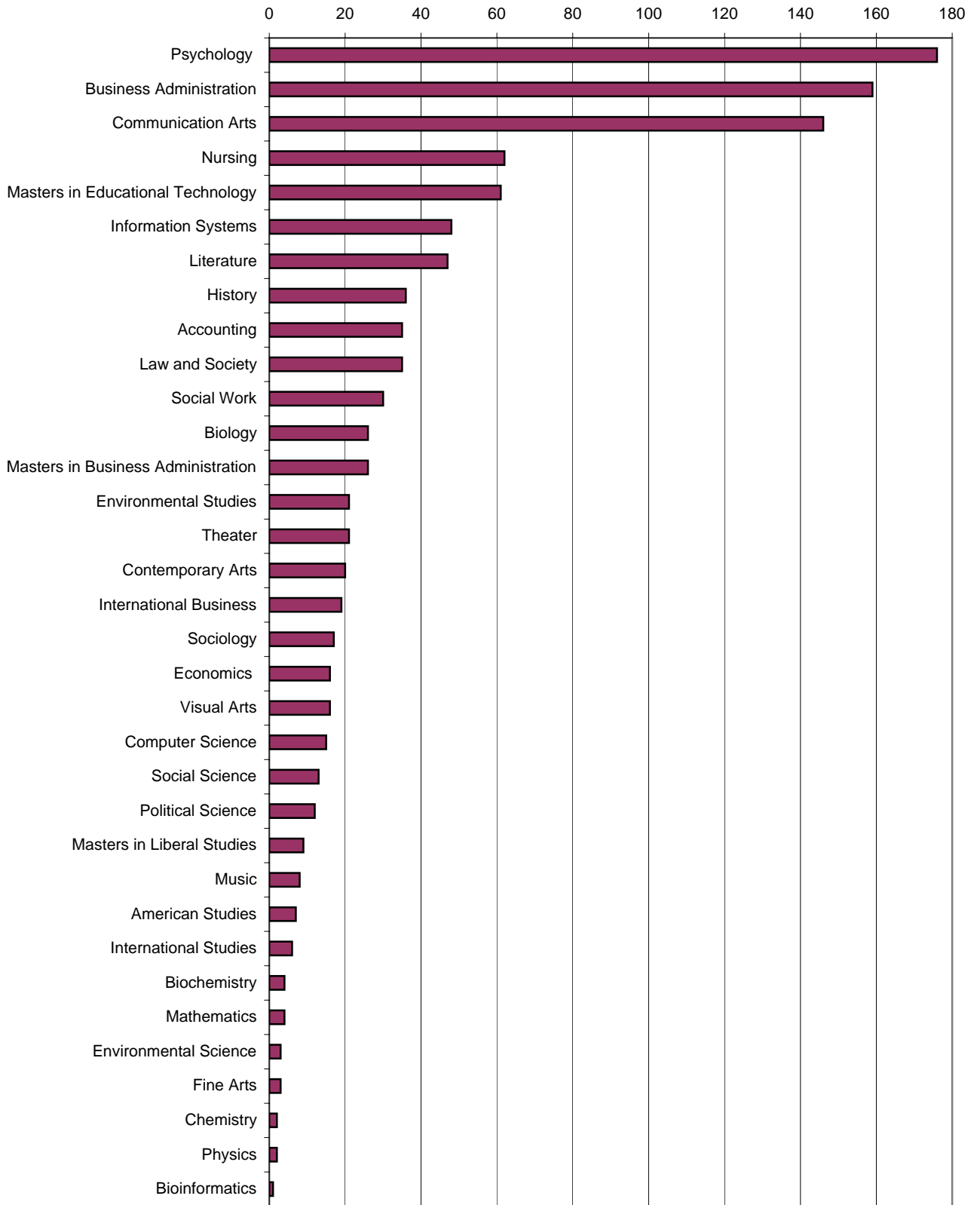
[2] Includes students from SSHS and TAS.

[3] Includes students from AIS and SSHS.

[4] Includes students from AIS and SSHS.

[5] Includes students from TAS and SSHS.

DEGREES AWARDED BY MAJOR

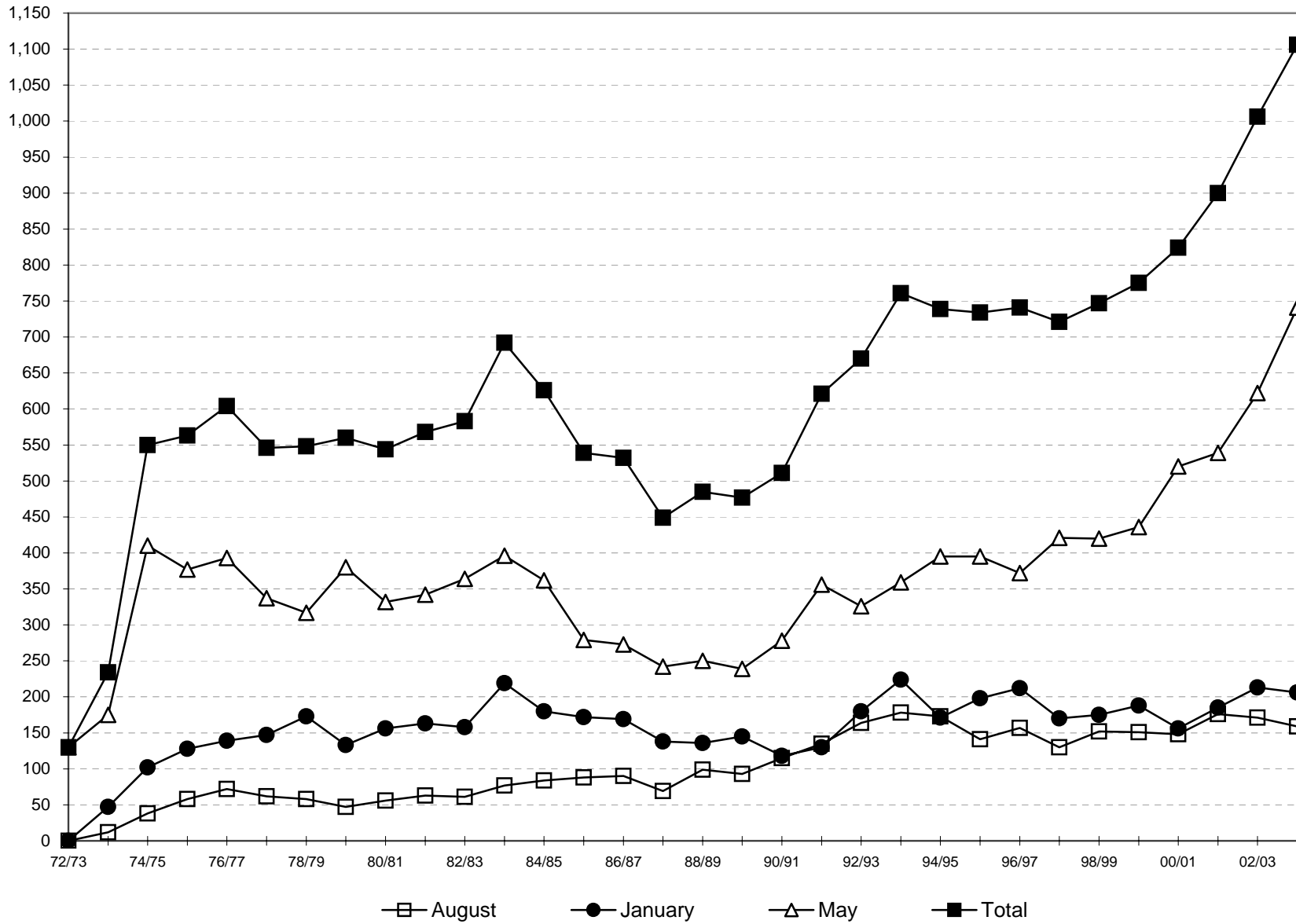


TOTAL DEGREES AWARDED, 1972 TO 2003-04*

Year	AUGUST DEGREES			JANUARY DEGREES			MAY DEGREES			TOTAL FISCAL YEAR DEGREES			CUMULATIVE DEGREES AWARDED SINCE 1972-73
	Number of Degrees Awarded	Percent Change From Previous August	Cumulative Percent Change From Aug. 1973	Number of Degrees Awarded	Percent Change From Previous January	Cumulative Percent Change From Jan. 1974	Number of Degrees Awarded	Percent Change From Previous May	Cumulative Percent Change From May 1973	Number of Degrees Awarded	Percent Change From Previous Fiscal Year	Cumulative Percent Change From 1972-73	
1972-73	N/A	N/A	N/A	N/A	N/A	N/A	130	N/A	0.0%	130	N/A	0.0%	130
1973-74	12	N/A	0.0%	47	N/A	0.0%	175	34.6%	34.6%	234	80.0%	80.0%	364
1974-75	38	216.7%	216.7%	102	117.0%	117.0%	410	134.3%	215.4%	550	135.0%	323.1%	914
1975-76	58	52.6%	383.3%	128	25.5%	172.3%	377	-8.0%	190.0%	563	2.4%	333.1%	1,477
1976-77	72	24.1%	500.0%	139	8.6%	195.7%	393	4.2%	202.3%	604	7.3%	364.6%	2,081
1977-78	62	-13.9%	416.7%	147	5.8%	212.8%	337	-14.2%	159.2%	546	-9.6%	320.0%	2,627
1978-79	58	-6.5%	383.3%	173	17.7%	268.1%	317	-5.9%	143.8%	548	0.4%	321.5%	3,175
1979-80	47	-19.0%	291.7%	133	-23.1%	183.0%	380	19.9%	192.3%	560	2.2%	330.8%	3,735
1980-81	56	19.1%	366.7%	156	17.3%	231.9%	332	-12.6%	155.4%	544	-2.9%	318.5%	4,279
1981-82	63	12.5%	425.0%	163	4.5%	246.8%	342	3.0%	163.1%	568	4.4%	336.9%	4,847
1982-83	61	-3.2%	408.3%	158	-3.1%	236.2%	364	6.4%	180.0%	583	2.6%	348.5%	5,430
1983-84	77	26.2%	541.7%	219	38.6%	366.0%	396	8.8%	204.6%	692	18.7%	432.3%	6,122
1984-85	84	9.1%	600.0%	180	-17.8%	283.0%	362	-8.6%	178.5%	626	-9.5%	381.5%	6,748
1985-86	88	4.8%	633.3%	172	-4.4%	266.0%	279	-22.9%	114.6%	539	-13.9%	314.6%	7,287
1986-87	90	2.3%	650.0%	169	-1.7%	259.6%	273	-2.2%	110.0%	532	-1.3%	309.2%	7,819
1987-88	69	-23.3%	475.0%	138	-18.3%	193.6%	242	-11.4%	86.2%	449	-15.6%	245.4%	8,268
1988-89	99	43.5%	725.0%	136	-1.4%	189.4%	250	3.3%	92.3%	485	8.0%	273.1%	8,753
1989-90	93	-6.1%	675.0%	145	6.6%	208.5%	239	-4.4%	83.8%	477	-1.6%	266.9%	9,230
1990-91	115	23.7%	858.3%	118	-18.6%	151.1%	278	16.3%	113.8%	511	7.1%	293.1%	9,741
1991-92	135	17.4%	1025.0%	130	10.2%	176.6%	356	28.1%	173.8%	621	21.5%	377.7%	10,362
1992-93	164	21.5%	1266.7%	180	38.5%	283.0%	326	-8.4%	150.8%	670	7.9%	415.4%	11,032
1993-94	178	8.5%	1383.3%	224	24.4%	376.6%	359	10.1%	176.2%	761	13.6%	485.4%	11,793
1994-95	173	-2.8%	1341.7%	171	-23.7%	263.8%	395	10.0%	203.8%	739	-2.9%	468.5%	12,532
1995-96	141	-18.5%	1075.0%	198	15.8%	321.3%	395	0.0%	203.8%	734	-0.7%	464.6%	13,266
1996-97	157	11.3%	1208.3%	212	7.1%	351.1%	372	-5.8%	186.2%	741	1.0%	470.0%	14,007
1997-98	130	-17.2%	983.3%	170	-19.8%	261.7%	421	13.2%	223.8%	721	-2.7%	454.6%	14,728
1998-99	152	16.9%	1166.7%	175	2.9%	272.3%	420	-0.2%	223.1%	747	3.6%	474.6%	15,475
1999-00	151	-0.7%	1158.3%	188	7.4%	300.0%	436	3.8%	235.4%	775	3.7%	496.2%	16,250
2000-01	148	-2.0%	1133.3%	156	-17.0%	231.9%	520	19.3%	300.0%	824	6.3%	533.8%	17,074
2001-02	176	18.9%	1366.7%	185	18.6%	293.6%	539	3.7%	314.6%	900	9.2%	592.3%	17,974
2002-03	171	-2.8%	1325.0%	213	15.1%	353.2%	622	15.4%	378.5%	1,006	11.8%	673.8%	18,980
2003-04	159	-7.0%	1225.0%	206	-3.3%	338.3%	741	19.1%	470.0%	1,106	9.9%	750.8%	20,086

* Degrees are reported on a fiscal year basis. For example, 2003-04 graduates include degree recipients from August 2003, Jar

DEGREES AWARDED BY FISCAL YEAR, 1972-73 TO 2003-04



DEGREES AWARDED BY AGE, 1999-00 TO 2003-04

	1999-00		2000-01		2001-02		2002-03		2003-04		Pct. Change 99/00 to 03/04	Pct. Change 02/03 to 03/04
	No.	Pct.	No.	Pct.	No.	Pct.	No.	Pct.	No.	Pct.		
Bachelor's												
Less Than 20	0	0.0%	1	0.1%	0	0.0%	0	0.0%	0	0.0%	N/A	N/A
20 to 24	356	48.6%	422	54.8%	492	59.1%	557	61.3%	652	64.6%	83.1%	17.1%
25 to 29	189	25.8%	180	23.4%	169	20.3%	184	20.3%	208	20.6%	10.1%	13.0%
30 to 39	115	15.7%	96	12.5%	91	10.9%	90	9.9%	76	7.5%	-33.9%	-15.6%
40 and Over	72	9.8%	71	9.2%	81	9.7%	77	8.5%	74	7.3%	2.8%	-3.9%
Total	732		770		833		908		1,010		38.0%	11.2%

	1999-00		2000-01		2001-02		2002-03		2003-04		Pct. Change 99/00 to 03/04	Pct. Change 02/03 to 03/04
	No.	Pct.	No.	Pct.	No.	Pct.	No.	Pct.	No.	Pct.		
Master's												
Less Than 20	0	0.0%	0	0.0%	0	0.0%	0	0.0%	0	0.0%	N/A	N/A
20 to 24	0	0.0%	0	0.0%	1	1.5%	0	0.0%	1	1.0%	N/A	N/A
25 to 29	3	7.0%	12	22.2%	19	28.4%	20	20.4%	29	30.2%	866.7%	45.0%
30 to 39	11	25.6%	21	38.9%	27	40.3%	33	33.7%	38	39.6%	245.5%	15.2%
40 and Over	29	67.4%	21	38.9%	20	29.9%	45	45.9%	28	29.2%	-3.4%	-37.8%
Total	43		54		67		98		96		123.3%	-2.0%

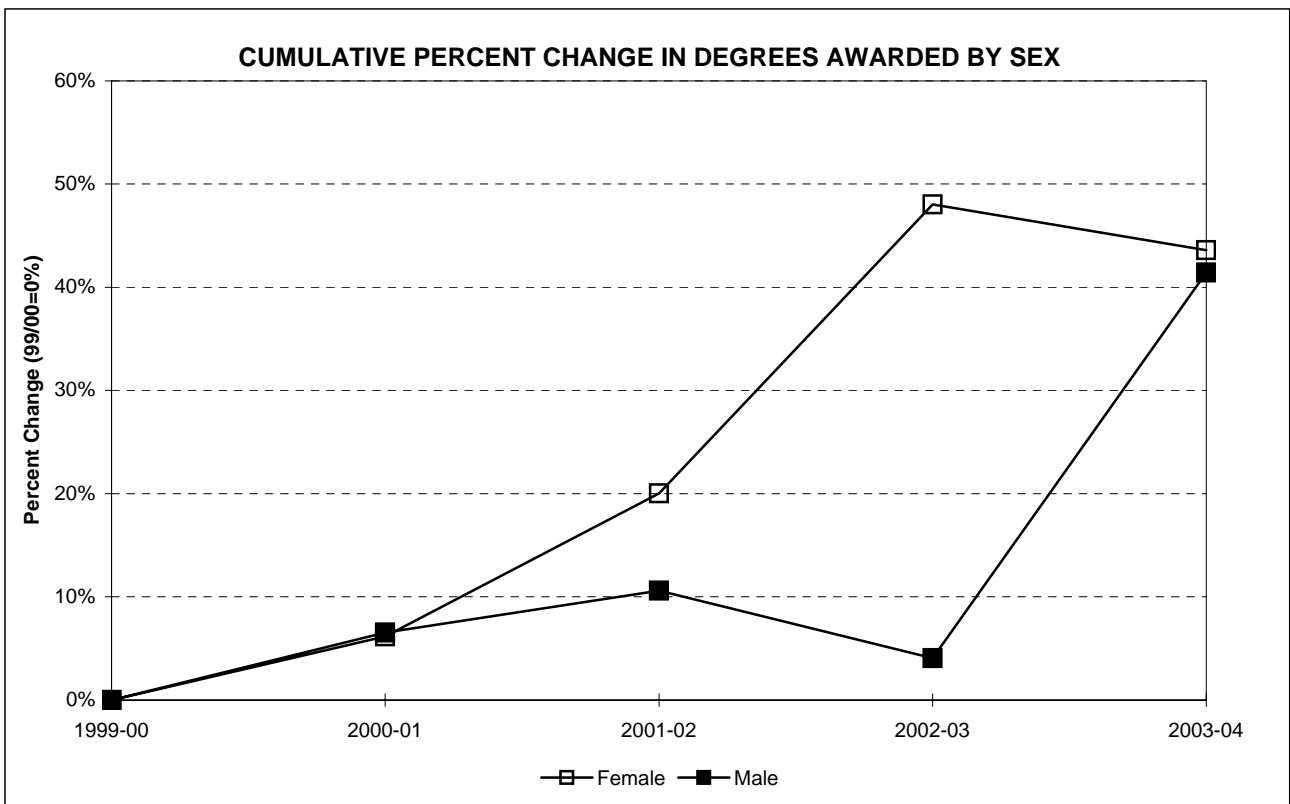
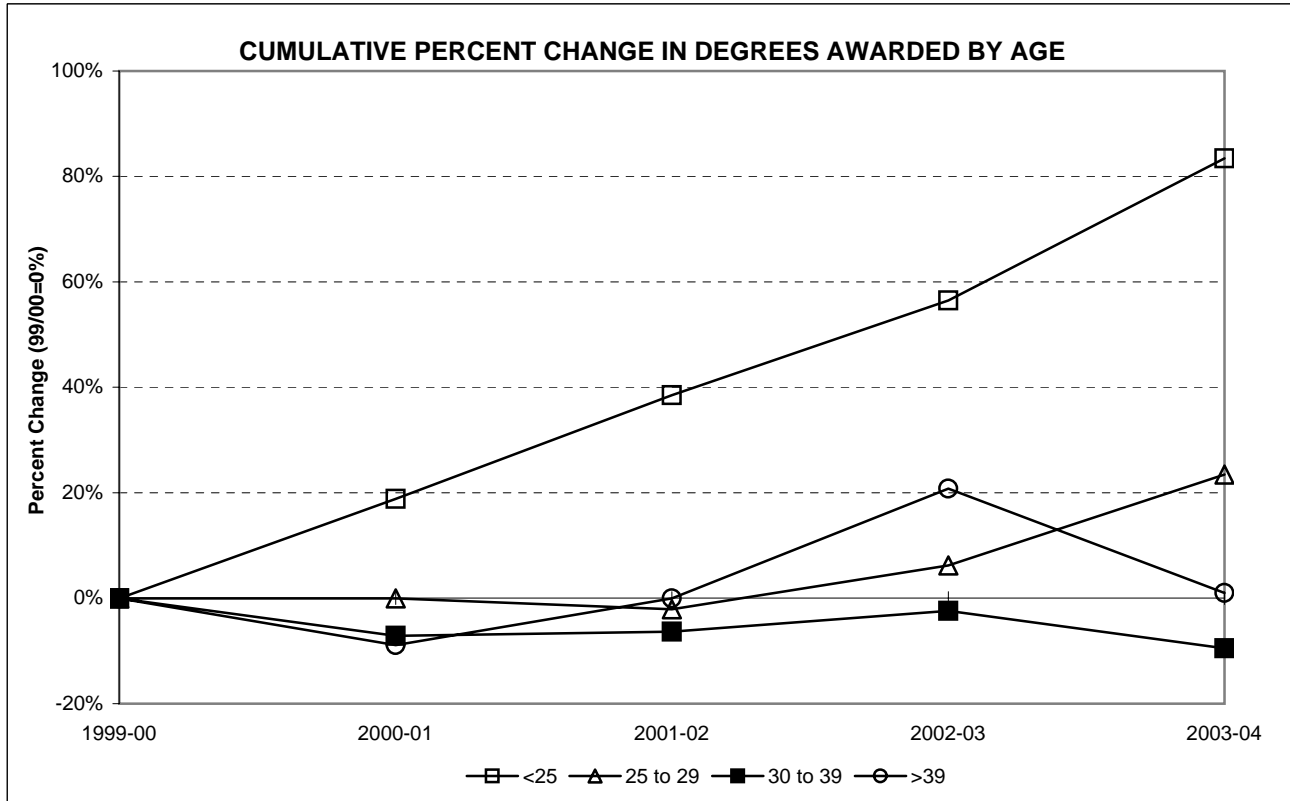
Total	1999-00		2000-01		2001-02		2002-03		2003-04		Pct. Change 99/00 to 03/04	Pct. Change 02/03 to 03/04
	No.	Pct.	No.	Pct.	No.	Pct.	No.	Pct.	No.	Pct.		
Less Than 20	0	0.0%	1	0.1%	0	0.0%	0	0.0%	0	0.0%	N/A	N/A
20 to 24	356	45.9%	422	51.2%	493	54.8%	557	55.4%	653	59.0%	83.4%	17.2%
25 to 29	192	24.8%	192	23.3%	188	20.9%	204	20.3%	237	21.4%	23.4%	16.2%
30 to 39	126	16.3%	117	14.2%	118	13.1%	123	12.2%	114	10.3%	-9.5%	-7.3%
40 and Over	101	13.0%	92	11.2%	101	11.2%	122	12.1%	102	9.2%	1.0%	-16.4%
Total	775		824		900		1,006		1,106		42.7%	9.9%

DEGREES AWARDED BY SEX, 1999-00 TO 2003-04

	1999-00		2000-01		2001-02		2002-03		2003-04		Pct. Change 99/00 to 03/04	Pct. Change 02/03 to 03/04
	No.	Pct.	No.	Pct.	No.	Pct.	No.	Pct.	No.	Pct.		
Bachelor's												
Female	419	57.2%	442	57.4%	502	60.3%	597	65.7%	604	59.8%	44.2%	1.2%
Male	313	42.8%	328	42.6%	331	39.7%	311	34.3%	406	40.2%	29.7%	30.5%
Total	732		770		833		908		1,010		38.0%	11.2%

	1999-00		2000-01		2001-02		2002-03		2003-04		Pct. Change 99/00 to 03/04	Pct. Change 02/03 to 03/04
	No.	Pct.	No.	Pct.	No.	Pct.	No.	Pct.	No.	Pct.		
Master's												
Female	35	81.4%	40	74.1%	43	64.2%	75	76.5%	48	50.0%	37.1%	-36.0%
Male	8	18.6%	14	25.9%	24	35.8%	23	23.5%	48	50.0%	500.0%	108.7%
Total	43		54		67		98		96		123.3%	-2.0%

Total	1999-00		2000-01		2001-02		2002-03		2003-04		Pct. Change 99/00 to 03/04	Pct. Change 02/03 to 03/04
	No.	Pct.	No.	Pct.	No.	Pct.	No.	Pct.	No.	Pct.		
Female	454	58.6%	482	58.5%	545	60.6%	672	66.8%	652	59.0%	43.6%	-3.0%
Male	321	41.4%	342	41.5%	355	39.4%	334	33.2%	454	41.0%	41.4%	35.9%
Total	775		824		900		1,006		1,106		42.7%	9.9%



DEGREES AWARDED BY ETHNICITY, 1999-00 TO 2003-04

Bachelor's	1999-00		2000-01		2001-02		2002-03		2003-04		Pct. Change 99/00 to 03/04	Pct. Change 02/03 to 03/04
	No.	Pct.	No.	Pct.	No.	Pct.	No.	Pct.	No.	Pct.		
American Indian/Nat. Al.	2	0.3%	0	0.0%	1	0.1%	5	0.6%	1	0.1%	-50.0%	-80.0%
Asian/Pacific Islander	50	6.8%	53	6.9%	56	6.7%	48	5.3%	54	5.3%	8.0%	12.5%
Black, non-Hispanic	55	7.5%	72	9.4%	60	7.2%	65	7.2%	61	6.0%	10.9%	-6.2%
Hispanic	37	5.1%	50	6.5%	62	7.4%	72	7.9%	61	6.0%	64.9%	-15.3%
White, non-Hispanic	588	80.3%	595	77.3%	654	78.5%	718	79.1%	833	82.5%	41.7%	16.0%
Total	732		770		833		908		1,010		38.0%	11.2%

Master's	1999-00		2000-01		2001-02		2002-03		2003-04		Pct. Change 99/00 to 03/04	Pct. Change 02/03 to 03/04
	No.	Pct.	No.	Pct.	No.	Pct.	No.	Pct.	No.	Pct.		
American Indian/Nat. Al.	0	0.0%	0	0.0%	1	1.5%	1	1.0%	0	0.0%	N/A	-100.0%
Asian/Pacific Islander	2	4.7%	2	3.7%	1	1.5%	0	0.0%	9	9.4%	350.0%	N/A
Black, non-Hispanic	2	4.7%	3	5.6%	13	19.4%	3	3.1%	2	2.1%	0.0%	-33.3%
Hispanic	0	0.0%	0	0.0%	1	1.5%	1	1.0%	1	1.0%	N/A	0.0%
White, non-Hispanic	39	90.7%	49	90.7%	51	76.1%	93	94.9%	84	87.5%	115.4%	-9.7%
Total	43		54		67		98		96		123.3%	-2.0%

Total	1999-00		2000-01		2001-02		2002-03		2003-04		Pct. Change 99/00 to 03/04	Pct. Change 02/03 to 03/04
	No.	Pct.	No.	Pct.	No.	Pct.	No.	Pct.	No.	Pct.		
American Indian/Nat. Al.	2	0.3%	0	0.0%	2	0.2%	6	0.6%	1	0.1%	-50.0%	-83.3%
Asian/Pacific Islander	52	6.7%	55	6.7%	57	6.3%	48	4.8%	63	5.7%	21.2%	31.3%
Black, non-Hispanic	57	7.4%	75	9.1%	73	8.1%	68	6.8%	63	5.7%	10.5%	-7.4%
Hispanic	37	4.8%	50	6.1%	63	7.0%	73	7.3%	62	5.6%	67.6%	-15.1%
White, non-Hispanic	627	80.9%	644	78.2%	705	78.3%	811	80.6%	917	82.9%	46.3%	13.1%
Total	775		824		900		1,006		1,106		42.7%	9.9%



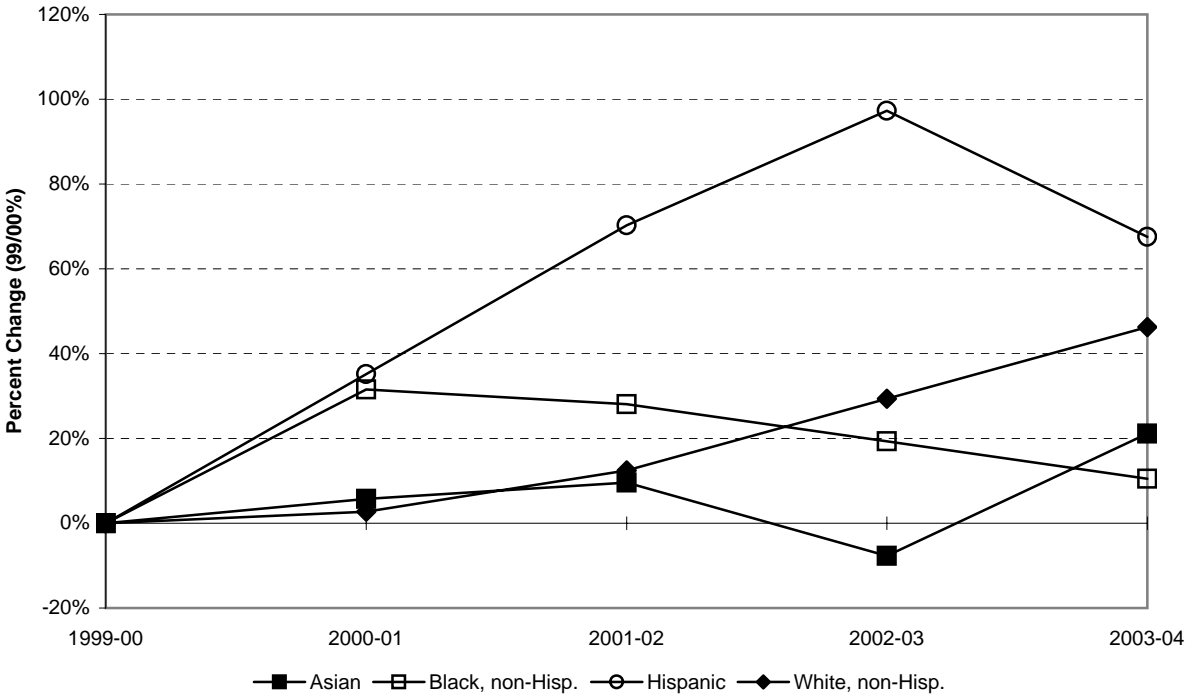
DEGREES AWARDED BY INITIAL ADMISSIONS TYPE, 1999-00 TO 2003-04

Bachelor's	1999-00		2000-01		2001-02		2002-03		2003-04		Pct. Change 99/00 to 03/04	Pct. Change 02/03 to 03/04
	No.	Pct.	No.	Pct.	No.	Pct.	No.	Pct.	No.	Pct.		
Regular	254	34.7%	290	37.7%	326	39.1%	337	37.1%	442	43.8%	74.0%	31.2%
EOF non-Transfer	28	3.8%	46	6.0%	49	5.9%	45	5.0%	34	3.4%	21.4%	-24.4%
EOF Transfer	7	1.0%	11	1.4%	8	1.0%	5	0.6%	10	1.0%	42.9%	100.0%
Special	19	2.6%	28	3.6%	29	3.5%	28	3.1%	35	3.5%	84.2%	25.0%
Transfer	424	57.9%	395	51.3%	421	50.5%	493	54.3%	489	48.4%	15.3%	-0.8%
Total	732		770		833		908		1,010		38.0%	11.2%

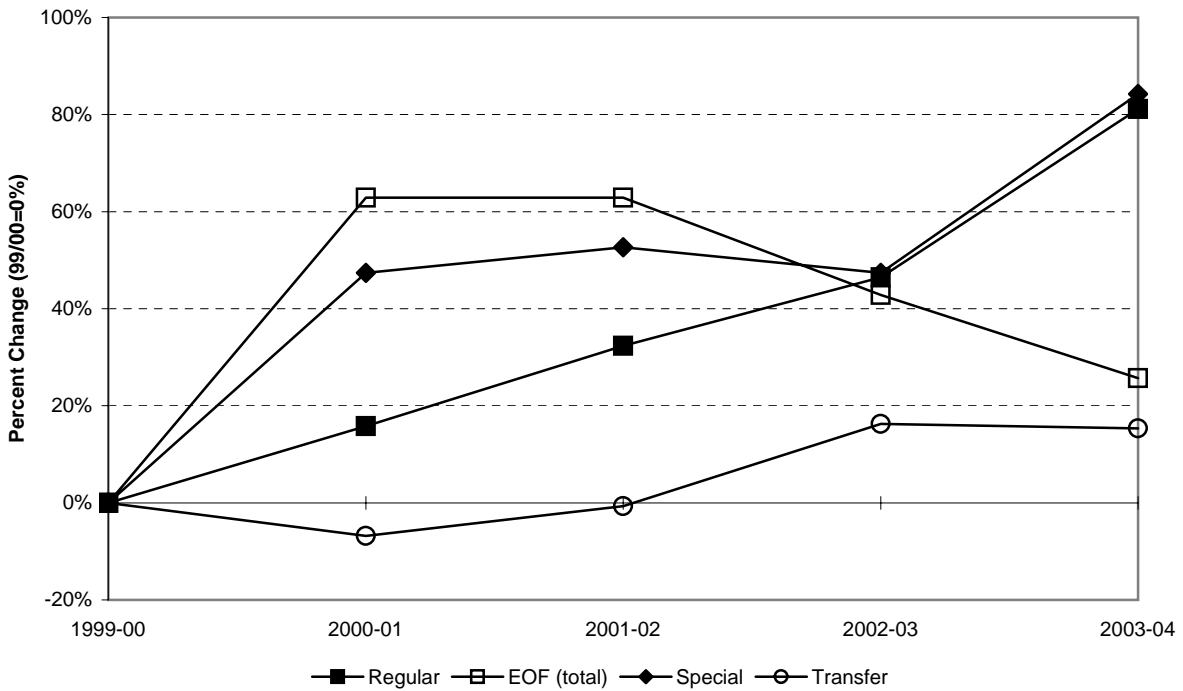
Master's	1999-00		2000-01		2001-02		2002-03		2003-04		Pct. Change 99/00 to 03/04	Pct. Change 02/03 to 03/04
	No.	Pct.	No.	Pct.	No.	Pct.	No.	Pct.	No.	Pct.		
Regular	43	100.0%	54	100.0%	67	100.0%	98	100.0%	96	100.0%	123.3%	-2.0%
EOF non-Transfer	0	0.0%	0	0.0%	0	0.0%	0	0.0%	0	0.0%	N/A	N/A
EOF Transfer	0	0.0%	0	0.0%	0	0.0%	0	0.0%	0	0.0%	N/A	N/A
Special	0	0.0%	0	0.0%	0	0.0%	0	0.0%	0	0.0%	N/A	N/A
Transfer	0	0.0%	0	0.0%	0	0.0%	0	0.0%	0	0.0%	N/A	N/A
Total	43		54		67		98		96		123.3%	-2.0%

Total	1999-00		2000-01		2001-02		2002-03		2003-04		Pct. Change 99/00 to 03/04	Pct. Change 02/03 to 03/04
	No.	Pct.	No.	Pct.	No.	Pct.	No.	Pct.	No.	Pct.		
Regular	297	38.3%	344	41.7%	393	43.7%	435	43.2%	538	48.6%	81.1%	23.7%
EOF non-Transfer	28	3.6%	46	5.6%	49	5.4%	45	4.5%	34	3.1%	21.4%	-24.4%
EOF Transfer	7	0.9%	11	1.3%	8	0.9%	5	0.5%	10	0.9%	42.9%	100.0%
Special	19	2.5%	28	3.4%	29	3.2%	28	2.8%	35	3.2%	84.2%	25.0%
Transfer	424	54.7%	395	47.9%	421	46.8%	493	49.0%	489	44.2%	15.3%	-0.8%
Total	775		824		900		1,006		1,106		42.7%	9.9%

CUMULATIVE PERCENT CHANGE IN DEGREES AWARDED BY ETHNICITY



CUMULATIVE PCT. CHANGE IN DEGREES AWARDED BY INITIAL ADMIT TYPE



DEGREES AWARDED BY ETHNICITY AND CITIZENSHIP, 1999-00 TO 2003-04

Bachelor's	1999-00		2000-01		2001-02		2002-03		2003-04		Pct. Change 99/00 to 03/04	Pct. Change 02/03 to 03/04
	No.	Pct.	No.	Pct.	No.	Pct.	No.	Pct.	No.	Pct.		
American Indian/Nat. Al.	2	0.3%	0	0.0%	1	0.1%	5	0.6%	1	0.1%	-50.0%	-80.0%
Asian/Pacific Islander	30	4.1%	31	4.0%	37	4.4%	36	4.0%	37	3.7%	23.3%	2.8%
Black, non-Hispanic	50	6.8%	64	8.3%	56	6.7%	60	6.6%	57	5.6%	14.0%	-5.0%
Hispanic	36	4.9%	50	6.5%	60	7.2%	70	7.7%	59	5.8%	63.9%	-15.7%
White, non-Hispanic	570	77.9%	582	75.6%	640	76.8%	701	77.2%	815	80.7%	43.0%	16.3%
Nonresident Alien	44	6.0%	43	5.6%	39	4.7%	36	4.0%	41	4.1%	-6.8%	13.9%
Total	732		770		833		908		1,010		38.0%	11.2%

Master's	1999-00		2000-01		2001-02		2002-03		2003-04		Pct. Change 99/00 to 03/04	Pct. Change 02/03 to 03/04
	No.	Pct.	No.	Pct.	No.	Pct.	No.	Pct.	No.	Pct.		
American Indian/Nat. Al.	0	0.0%	0	0.0%	1	1.5%	1	1.0%	0	0.0%	N/A	-100.0%
Asian/Pacific Islander	2	4.7%	2	3.7%	0	0.0%	0	0.0%	7	7.3%	250.0%	N/A
Black, non-Hispanic	2	4.7%	3	5.6%	12	17.9%	3	3.1%	2	2.1%	0.0%	-33.3%
Hispanic	0	0.0%	0	0.0%	1	1.5%	1	1.0%	1	1.0%	N/A	0.0%
White, non-Hispanic	39	90.7%	47	87.0%	51	76.1%	91	92.9%	82	85.4%	110.3%	-9.9%
Nonresident Alien	0	0.0%	2	3.7%	2	3.0%	2	2.0%	4	4.2%	N/A	100.0%
Total	43		54		67		98		96		123.3%	-2.0%

Total	1999-00		2000-01		2001-02		2002-03		2003-04		Pct. Change 99/00 to 03/04	Pct. Change 02/03 to 03/04
	No.	Pct.	No.	Pct.	No.	Pct.	No.	Pct.	No.	Pct.		
American Indian/Nat. Al.	2	0.3%	0	0.0%	2	0.2%	6	0.6%	1	0.1%	-50.0%	-83.3%
Asian/Pacific Islander	32	4.1%	33	4.0%	37	4.1%	36	3.6%	44	4.0%	37.5%	22.2%
Black, non-Hispanic	52	6.7%	67	8.1%	68	7.6%	63	6.3%	59	5.3%	13.5%	-6.3%
Hispanic	36	4.6%	50	6.1%	61	6.8%	71	7.1%	60	5.4%	66.7%	-15.5%
White, non-Hispanic	609	78.6%	629	76.3%	691	76.8%	792	78.7%	897	81.1%	47.3%	13.3%
Nonresident Alien	44	5.7%	45	5.5%	41	4.6%	38	3.8%	45	4.1%	2.3%	18.4%
Total	775		824		900		1,006		1,106		42.7%	9.9%



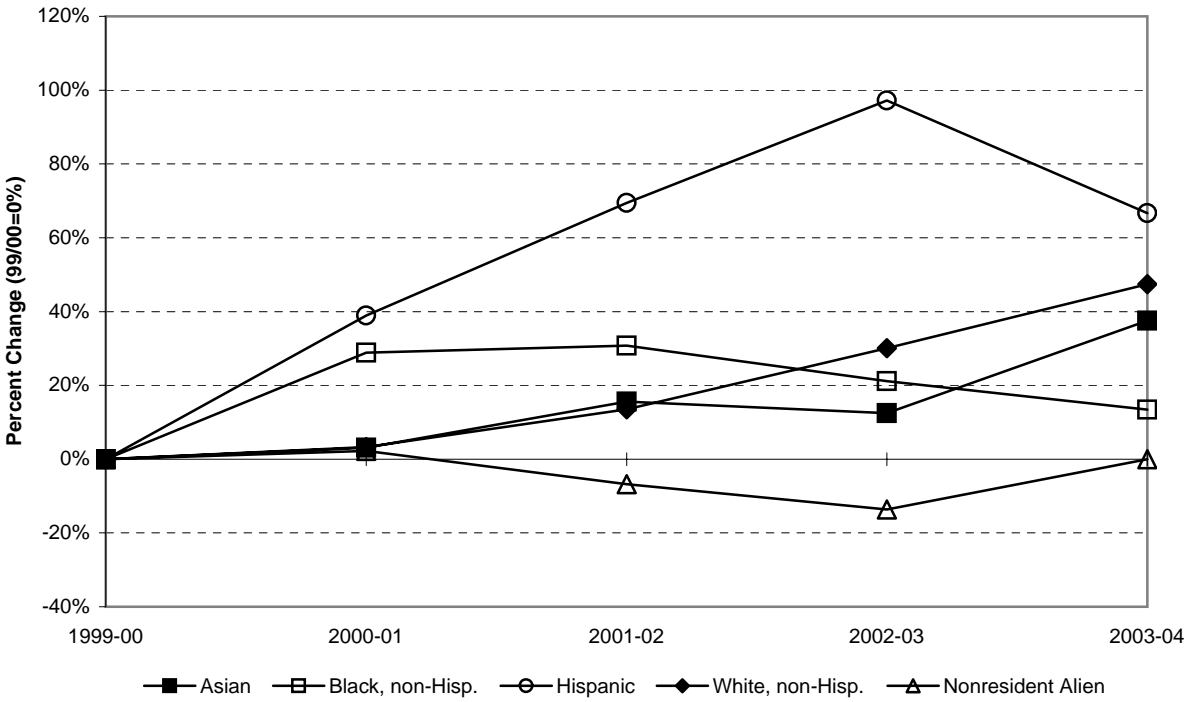
DEGREES AWARDED BY CITIZENSHIP, 1999-00 TO 2003-04

Bachelor's	1999-00		2000-01		2001-02		2002-03		2003-04		Pct. Change 99/00 to 03/04	Pct. Change 02/03 to 03/04
	No.	Pct.	No.	Pct.	No.	Pct.	No.	Pct.	No.	Pct.		
Citizen/Permanent Res.	688	94.0%	727	94.4%	794	95.3%	872	96.0%	969	95.9%	40.8%	11.1%
non-Citizen/non-Res.	44	6.0%	43	5.6%	39	4.7%	36	4.0%	41	4.1%	-6.8%	13.9%
Total	732		770		833		908		1,010		38.0%	11.2%

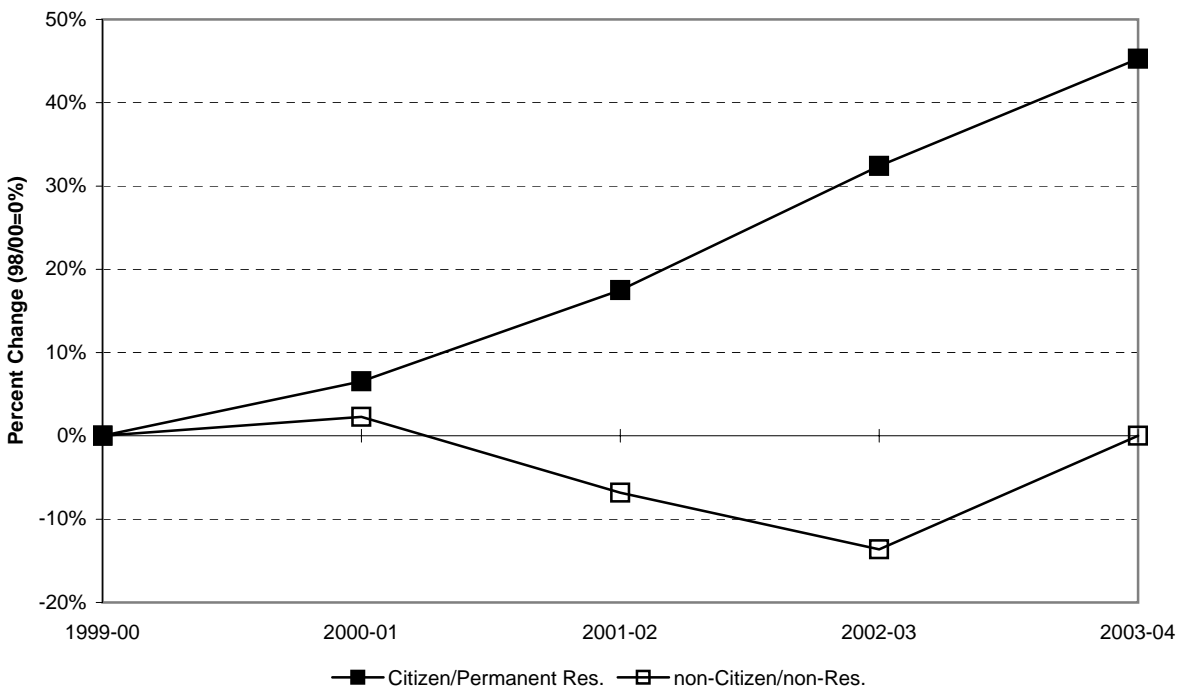
Master's	1999-00		2001-02		2001-02		2002-03		2003-04		Pct. Change 99/00 to 03/04	Pct. Change 02/03 to 03/04
	No.	Pct.	No.	Pct.	No.	Pct.	No.	Pct.	No.	Pct.		
Citizen/Permanent Res.	43	100.0%	52	96.3%	65	97.0%	96	98.0%	92	95.8%	114.0%	-4.2%
non-Citizen/non-Res.	0	0.0%	2	3.7%	2	3.0%	2	2.0%	4	4.2%	N/A	100.0%
Total	43		54		67		98		96		123.3%	-2.0%

Total	1999-00		2001-02		2001-02		2002-03		2003-04		Pct. Change 99/00 to 03/04	Pct. Change 02/03 to 03/04
	No.	Pct.	No.	Pct.	No.	Pct.	No.	Pct.	No.	Pct.		
Citizen/Permanent Res.	731	94.3%	779	94.5%	859	95.4%	968	96.2%	1,061	95.9%	45.1%	9.6%
non-Citizen/non-Res.	44	5.7%	45	5.5%	41	4.6%	38	3.8%	45	4.1%	2.3%	18.4%
Total	775		824		900		1,006		1,106		42.7%	9.9%

CUM. PCT. CHANGE IN DEGREES AWARDED BY ETHNICITY & CITIZENSHIP

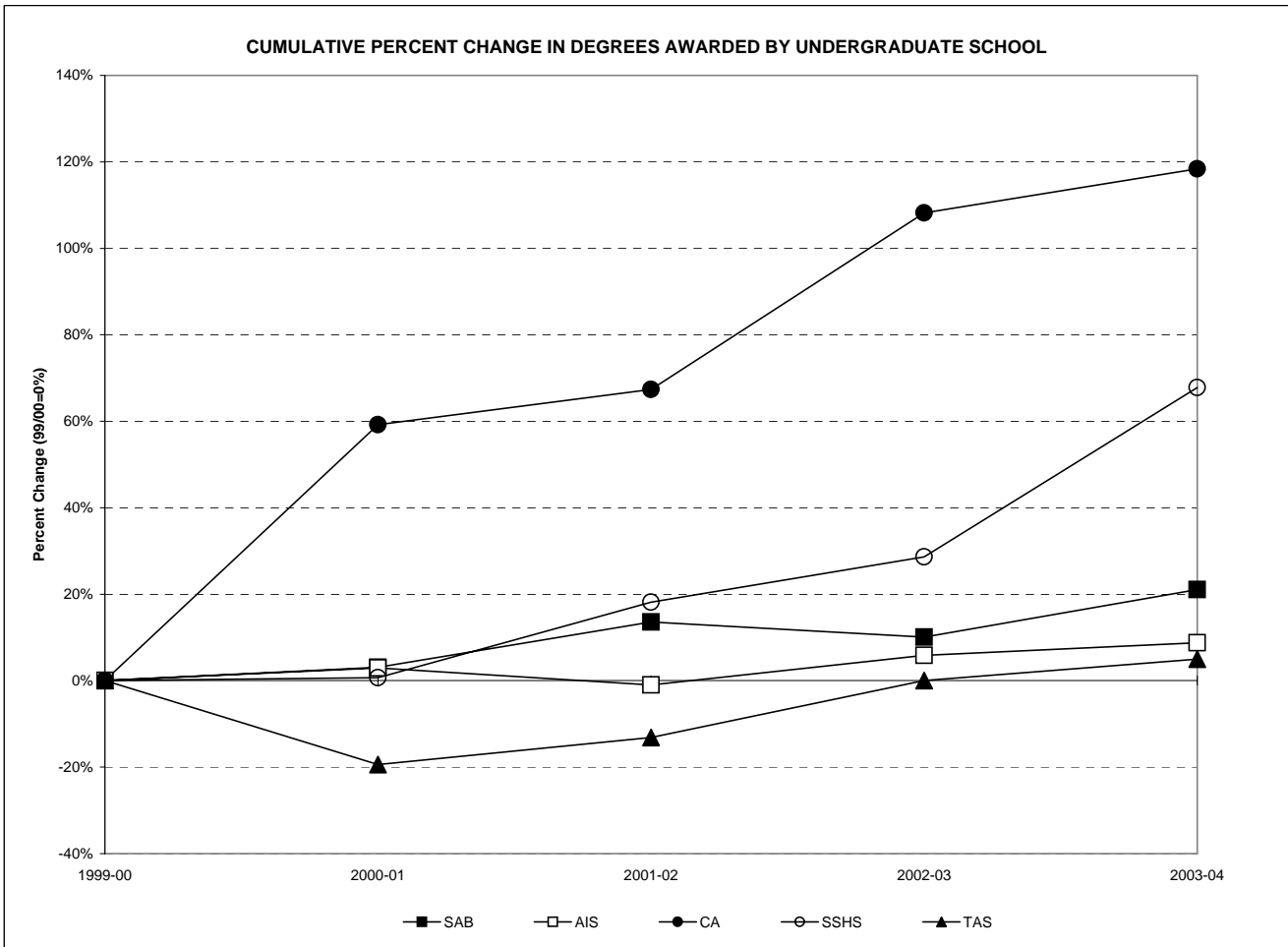


CUMULATIVE PERCENT CHANGE IN DEGREES AWARDED BY CITIZENSHIP



DEGREES AWARDED BY UNDERGRADUATE SCHOOL AND COMBINED GRADUATE PROGRAMS, 1999-00 TO 2003-04

Schools	1999-00		2000-01		2001-02		2002-03		2003-04		Percent Chg. 99/00 to 03/04	Percent Chg. 02/03 to 03/04
	No.	Pct.	No.	Pct.	No.	Pct.	No.	Pct.	No.	Pct.		
Admin. & Business	228	29.4%	235	28.5%	259	28.8%	251	25.0%	276	25.0%	21.1%	10.0%
Amer. & Int'l Studies	103	13.3%	106	12.9%	102	11.3%	109	10.8%	112	10.1%	8.7%	2.8%
Contemporary Arts	98	12.6%	156	18.9%	164	18.2%	204	20.3%	214	19.3%	118.4%	4.9%
Soc. Sci. & Hum. Serv.	143	18.5%	144	17.5%	169	18.8%	184	18.3%	240	21.7%	67.8%	30.4%
Theoretical & App. Sci.	160	20.6%	129	15.7%	139	15.4%	160	15.9%	168	15.2%	5.0%	5.0%
Graduate Programs	43	5.5%	54	6.6%	67	7.4%	98	9.7%	96	8.7%	123.3%	-2.0%
Total	775		824		900		1,006		1,106		42.7%	9.9%



DEGREES AWARDED BY SCHOOL AND MAJOR (WITH GRADUATE PROGRAMS), 1998-99 TO 2002-03

Majors/Programs	1999-00		2000-01		2001-02		2002-03		2003-04		Percent Chg. 99/00 to 03/04	Percent Chg. 02/03 to 03/04
	No.	Pct.	No.	Pct.	No.	Pct.	No.	Pct.	No.	Pct.		
Accounting	40	5.2%	21	2.5%	31	3.4%	39	3.9%	35	3.2%	-12.5%	-10.3%
Business Administration	124	16.0%	119	14.4%	126	14.0%	128	12.7%	159	14.4%	28.2%	24.2%
Economics	11	1.4%	14	1.7%	8	0.9%	16	1.6%	15	1.4%	36.4%	-6.3%
Information Systems	36	4.6%	58	7.0%	71	7.9%	52	5.2%	48	4.3%	33.3%	-7.7%
International Business	17	2.2%	23	2.8%	23	2.6%	16	1.6%	19	1.7%	11.8%	18.8%
<i>Sub-Total: SAB</i>	<i>228</i>	<i>29.4%</i>	<i>235</i>	<i>28.5%</i>	<i>259</i>	<i>28.8%</i>	<i>251</i>	<i>25.0%</i>	<i>276</i>	<i>25.0%</i>	<i>21.1%</i>	<i>10.0%</i>
American Studies	4	0.5%	3	0.4%	6	0.7%	8	0.8%	7	0.6%	75.0%	-12.5%
American/Int'l Studies	1	0.1%	1	0.0%	0	0.0%	0	0.0%	0	0.0%	-100.0%	N/A
History	18	2.3%	17	2.1%	14	1.6%	28	2.8%	34	3.1%	88.9%	21.4%
International Studies	10	1.3%	7	0.8%	8	0.9%	9	0.9%	6	0.5%	-40.0%	-33.3%
Law and Society	9	1.2%	10	1.2%	15	1.7%	8	0.8%	6	0.5%	-33.3%	-25.0%
Literature	48	6.2%	53	6.4%	45	5.0%	38	3.8%	47	4.2%	-2.1%	23.7%
Political Science	13	1.7%	15	1.8%	14	1.6%	18	1.8%	12	1.1%	-7.7%	-33.3%
<i>Sub-Total: AIS</i>	<i>103</i>	<i>13.3%</i>	<i>106</i>	<i>12.9%</i>	<i>102</i>	<i>11.3%</i>	<i>109</i>	<i>10.8%</i>	<i>112</i>	<i>10.1%</i>	<i>8.7%</i>	<i>2.8%</i>
Communication Arts	62	8.0%	101	12.3%	118	13.1%	143	14.2%	146	13.2%	135.5%	2.1%
Contemporary Arts	9	1.2%	20	2.4%	9	1.0%	10	1.0%	20	1.8%	122.2%	100.0%
Fine Arts	27	3.5%	35	4.2%	37	4.1%	10	1.0%	3	0.3%	-88.9%	-70.0%
Music	--	--	--	--	--	--	7	0.7%	8	0.7%	N/A	N/A
Theater	--	--	--	--	--	--	10	1.0%	21	1.9%	N/A	N/A
Visual Arts	--	--	--	--	--	--	24	2.4%	16	1.4%	N/A	N/A
<i>Sub-Total: CA</i>	<i>98</i>	<i>12.6%</i>	<i>156</i>	<i>18.9%</i>	<i>164</i>	<i>18.2%</i>	<i>204</i>	<i>20.3%</i>	<i>214</i>	<i>19.3%</i>	<i>118.4%</i>	<i>4.9%</i>
Economics	3	0.4%	2	0.2%	0	0.0%	2	0.2%	1	0.1%	-66.7%	N/A
Environmental Studies	1	0.1%	1	0.1%	1	0.1%	1	0.1%	0	0.0%	-100.0%	-100.0%
History	2	0.3%	0	0.0%	1	0.1%	1	0.1%	2	0.2%	N/A	N/A
Law and Society	6	0.8%	5	0.6%	6	0.7%	7	0.7%	29	2.6%	383.3%	314.3%
Political Science	1	0.1%	0	0.0%	0	0.0%	0	0.0%	0	0.0%	-100.0%	N/A
Psychology	47	6.1%	68	8.3%	94	10.4%	112	11.1%	148	13.4%	214.9%	32.1%
Social Science	23	3.0%	22	2.7%	23	2.6%	18	1.8%	13	1.2%	-43.5%	-27.8%
Social Work	40	5.2%	31	3.8%	23	2.6%	20	2.0%	30	2.7%	-25.0%	50.0%
Sociology	20	2.6%	15	1.8%	21	2.3%	23	2.3%	17	1.5%	-15.0%	-26.1%
<i>Sub-Total: SSSH</i>	<i>143</i>	<i>18.5%</i>	<i>144</i>	<i>17.5%</i>	<i>169</i>	<i>18.8%</i>	<i>184</i>	<i>18.3%</i>	<i>240</i>	<i>21.7%</i>	<i>67.8%</i>	<i>30.4%</i>
Biochemistry	4	0.5%	5	0.6%	6	0.7%	4	0.4%	4	0.4%	N/A	0.0%
Bioinformatics	0	0.0%	0	0.0%	0	0.0%	0	0.0%	1	0.1%	N/A	N/A
Biology	20	2.6%	14	1.7%	15	1.7%	18	1.8%	26	2.4%	30.0%	44.4%
Chemistry	3	0.4%	1	0.1%	5	0.6%	4	0.4%	2	0.2%	-33.3%	-50.0%
Computer Science	16	2.1%	11	1.3%	9	1.0%	14	1.4%	15	1.4%	-6.3%	7.1%
Environmental Science	9	1.2%	4	0.5%	3	0.3%	7	0.7%	3	0.3%	-66.7%	-57.1%
Environmental Studies	22	2.8%	18	2.2%	15	1.7%	11	1.1%	21	1.9%	-4.5%	90.9%
Mathematics	3	0.4%	8	1.0%	4	0.4%	8	0.8%	4	0.4%	33.3%	-50.0%
Nursing	46	5.9%	48	5.8%	54	6.0%	69	6.9%	62	5.6%	34.8%	-10.1%
Physics	2	0.3%	2	0.2%	0	0.0%	2	0.2%	2	0.2%	0.0%	N/A
Psychology	35	4.5%	18	2.2%	28	3.1%	23	2.3%	28	2.5%	-20.0%	21.7%
<i>Sub-Total: TAS</i>	<i>160</i>	<i>20.6%</i>	<i>129</i>	<i>15.7%</i>	<i>139</i>	<i>15.4%</i>	<i>160</i>	<i>15.9%</i>	<i>168</i>	<i>15.2%</i>	<i>5.0%</i>	<i>5.0%</i>
M.A. in Liberal Studies	13	1.7%	2	0.2%	12	1.3%	10	1.0%	9	0.8%	-30.8%	-10.0%
M. in Business Admin.	--	--	8	1.0%	12	1.3%	8	0.8%	26	2.4%	N/A	225.0%
M.S. in Educational Tech.	30	3.9%	44	5.3%	43	4.8%	80	8.0%	61	5.5%	N/A	-23.8%
<i>Sub-Total: TAS</i>	<i>43</i>	<i>5.5%</i>	<i>54</i>	<i>6.6%</i>	<i>67</i>	<i>7.4%</i>	<i>98</i>	<i>9.7%</i>	<i>96</i>	<i>8.7%</i>	<i>123.3%</i>	<i>-2.0%</i>
Total	775		824		900		1,006		1,106		42.7%	9.9%

DEGREES AWARDED BY MAJOR (WITH GRADUATE PROGRAMS), 1999-00 TO 2003-04

Major/Program	1999-00		2000-01		2001-02		2002-03		2003-04		Percent	Percent
	No.	Pct.	No.	Pct.	No.	Pct.	No.	Pct.	No.	Pct.	Chg. 99/00 to 03/04	Chg. 02/03 to 03/04
Accounting	40	5.2%	21	2.5%	31	3.4%	39	3.9%	35	3.2%	-12.5%	-10.3%
American Studies	4	0.5%	3	0.4%	6	0.7%	8	0.8%	7	0.6%	75.0%	-12.5%
American/Int'l Studies	1	0.1%	1	0.1%	0	0.0%	0	0.0%	0	0.0%	-100.0%	N/A
Biochemistry	4	0.5%	5	0.6%	6	0.7%	4	0.4%	4	0.4%	0.0%	0.0%
Bioinformatics	0	0.0%	0	0.0%	0	0.0%	0	0.0%	1	0.1%	N/A	N/A
Biology	20	2.6%	14	1.7%	15	1.7%	18	1.8%	26	2.4%	30.0%	44.4%
Business Administration	124	16.0%	119	14.4%	126	14.0%	128	12.7%	159	14.4%	28.2%	24.2%
Chemistry	3	0.4%	1	0.1%	5	0.6%	4	0.4%	2	0.2%	-33.3%	-50.0%
Communication Arts	62	8.0%	101	12.3%	118	13.1%	143	14.2%	146	13.2%	143.0%	2.1%
Computer Science	16	2.1%	11	1.3%	9	1.0%	14	1.4%	15	1.4%	-6.3%	7.1%
Contemporary Arts	9	1.2%	20	2.4%	9	1.0%	10	1.0%	20	1.8%	122.2%	100.0%
Economics[2]	14	1.8%	16	1.9%	8	0.9%	18	1.8%	16	1.4%	14.3%	-11.1%
Environmental Science	9	1.2%	4	0.5%	3	0.3%	7	0.7%	3	0.3%	-66.7%	-57.1%
Environmental Studies[3]	23	3.0%	19	2.3%	16	1.8%	12	1.2%	21	1.9%	-8.7%	75.0%
Fine Arts	27	3.5%	35	4.2%	37	4.1%	10	1.0%	3	0.3%	-88.9%	-70.0%
History[4]	20	2.6%	17	2.1%	15	1.7%	29	2.9%	36	3.3%	80.0%	24.1%
Information Systems	36	4.6%	58	7.0%	71	7.9%	52	5.2%	48	4.3%	33.3%	-7.7%
International Business	17	2.2%	23	2.8%	23	2.6%	16	1.6%	19	1.7%	11.8%	18.8%
International Studies	10	1.3%	7	0.8%	8	0.9%	9	0.9%	6	0.5%	-40.0%	-33.3%
Law and Society[5]	15	1.9%	15	1.8%	21	2.3%	15	1.5%	35	3.2%	133.3%	133.3%
Literature	48	6.2%	53	6.4%	45	5.0%	38	3.8%	47	4.2%	-2.1%	23.7%
M.A. in Liberal Studies	13	1.7%	2	0.2%	12	1.3%	10	1.0%	9	0.8%	-30.8%	-10.0%
M. in Business Admin.	--	--	8	1.0%	12	1.3%	8	0.8%	26	2.4%	N/A	225.0%
M.S. in Ed. Technology	30	3.9%	44	5.3%	43	4.8%	80	8.0%	61	5.5%	N/A	-23.8%
Mathematics	3	0.4%	8	1.0%	4	0.4%	8	0.8%	4	0.4%	33.3%	-50.0%
Music	--	--	--	--	--	--	7	0.7%	8	0.7%	N/A	14.3%
Nursing	46	5.9%	48	5.8%	54	6.0%	69	6.9%	62	5.6%	34.8%	-10.1%
Physics	2	0.3%	2	0.2%	0	0.0%	2	0.2%	2	0.2%	0.0%	0.0%
Political Science[6]	14	1.8%	15	1.8%	14	1.6%	18	1.8%	12	1.1%	-14.3%	-33.3%
Psychology[7]	82	10.6%	86	10.4%	122	13.6%	135	13.4%	176	15.9%	114.6%	30.4%
Social Science	23	3.0%	22	2.7%	23	2.6%	18	1.8%	13	1.2%	-43.5%	-27.8%
Social Work	40	5.2%	31	3.8%	23	2.6%	20	2.0%	30	2.7%	-25.0%	50.0%
Sociology	20	2.6%	15	1.8%	21	2.3%	23	2.3%	17	1.5%	-15.0%	-26.1%
Theater	--	--	--	--	--	--	10	1.0%	21	1.9%	N/A	110.0%
Visual Arts	--	--	--	--	--	--	24	2.4%	16	1.4%	N/A	-33.3%
Total	775		824		900		1,006		1,106		42.7%	9.9%

[1] Joint degree with UMDNJ.

[2] Includes students from SAB and SSHS.

[3] Includes students from SSHS and TAS.

[4] Includes students from AIS and SSHS.

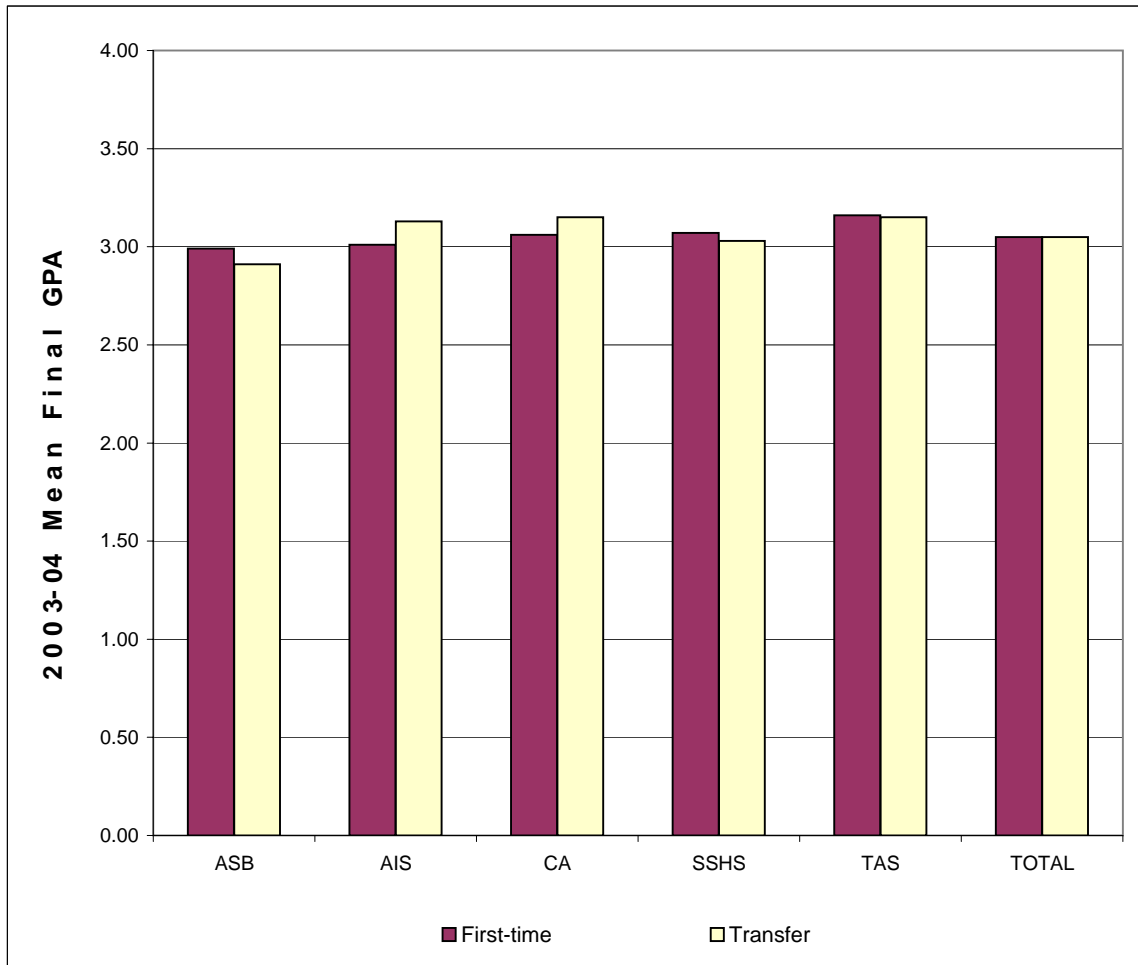
[5] Includes students from AIS and SSHS.

[6] Includes students from AIS and SSHS.

[7] Includes students from SSHS and TAS.

**MEAN FINAL GRADE POINT AVERAGES BY SCHOOL AND INITIAL ADMISSIONS TYPE
2003-04 DEGREE RECIPIENTS, UNDERGRADUATE ONLY**

School	Mean Final Grade Point Average of First-time Students		Mean Final Grade Point Average of Transfer Students		Overall Mean GPA
	Number	Mean GPA	Number	Mean GPA	
Anisfield School of Business	123	2.99	153	2.91	2.94
American & Int'l. Studies	66	3.01	46	3.13	3.06
Contemporary Arts	136	3.06	78	3.15	3.09
Social Science & Human Services	118	3.07	122	3.03	3.05
Theoretical & Applied Science	68	3.16	100	3.15	3.15
Overall	511	3.05	499	3.05	



NEW UNDERGRADUATE STUDENT COHORT RETENTION RATES

Fall of Entry	Sub-Cohorts*	Original Size	Retained One-Year		Retained Two-Years		Retained Three-Years		Retained Four-Years		Retained Five-Years		Retained Six-Years	
			#	Rate	#	Rate	#	Rate	#	Rate	#	Rate	#	Rate
1994	FTFTF	343	250	72.9%	197	57.4%	184	53.6%	106	30.9%	31	9.0%	10	2.9%
	PTFTF	22	11	50.0%	6	27.3%	4	18.2%	1	4.5%	0	0.0%	0	0.0%
	FTTR	341	253	74.2%	162	47.5%	71	20.8%	36	10.6%	17	5.0%	9	2.6%
	PTTR	212	144	67.9%	120	56.6%	76	35.8%	54	25.5%	33	15.6%	25	11.8%
	Total	918	658	71.7%	485	52.8%	335	36.5%	197	21.5%	81	8.8%	44	4.8%
1995	FTFTF	319	247	77.4%	184	57.7%	174	54.5%	99	31.0%	33	10.3%	15	4.7%
	PTFTF	21	10	47.6%	7	33.3%	6	28.6%	4	19.0%	3	14.3%	3	14.3%
	FTTR	311	236	75.9%	160	51.4%	72	23.2%	29	9.3%	15	4.8%	11	3.5%
	PTTR	197	119	60.4%	97	49.2%	72	36.5%	48	24.4%	33	16.8%	22	11.2%
	Total	848	612	72.2%	448	52.8%	324	38.2%	180	21.2%	84	9.9%	51	6.0%
1996	FTFTF	413	337	81.6%	281	68.0%	255	61.7%	153	37.0%	38	9.2%	22	5.3%
	PTFTF	17	10	58.8%	4	23.5%	3	17.6%	3	17.6%	1	5.9%	1	5.9%
	FTTR	339	257	75.8%	161	47.5%	67	19.8%	33	9.7%	8	2.4%	6	1.8%
	PTTR	210	124	59.0%	92	43.8%	64	30.5%	35	16.7%	26	12.4%	19	9.0%
	Total	979	728	74.4%	538	55.0%	389	39.7%	224	22.9%	73	7.5%	48	4.9%
1997	FTFTF	454	359	79.1%	306	67.4%	294	64.8%	162	35.7%	45	9.9%	22	4.8%
	PTFTF	17	8	47.1%	7	41.2%	4	23.5%	4	23.5%	3	17.6%	2	11.8%
	FTTR	351	269	76.6%	168	47.9%	73	20.8%	29	8.3%	12	3.4%	12	3.4%
	PTTR	208	139	66.8%	104	50.0%	69	33.2%	44	21.2%	31	14.9%	22	10.6%
	Total	1,030	775	75.2%	585	56.8%	440	42.7%	239	23.2%	91	8.8%	58	5.6%
1998	FTFTF	472	392	83.1%	353	74.8%	321	68.0%	167	35.4%	47	10.0%	22	4.7%
	PTFTF	17	12	70.6%	9	52.9%	7	41.2%	6	35.3%	4	23.5%	3	17.6%
	FTTR	351	264	75.2%	171	48.7%	77	21.9%	35	10.0%	12	3.4%	9	2.6%
	PTTR	183	120	65.6%	91	49.7%	67	36.6%	39	21.3%	29	15.8%	16	8.7%
	Total	1,023	788	77.0%	624	61.0%	472	46.1%	247	24.1%	92	9.0%	50	4.9%
1999	FTFTF	528	435	82.4%	378	71.6%	348	65.9%	146	27.7%	42	8.0%	-	-
	PTFTF	8	4	50.0%	3	37.5%	2	25.0%	0	0.0%	0	0.0%	-	-
	FTTR	364	274	75.3%	169	46.4%	88	24.2%	37	10.2%	15	4.1%	-	-
	PTTR	152	93	61.2%	74	48.7%	53	34.9%	37	24.3%	27	17.8%	-	-
	Total	1,052	806	76.6%	624	59.3%	491	46.7%	220	20.9%	84	8.0%	-	-
2000	FTFTF	638	542	85.0%	490	76.8%	459	71.9%	187	29.3%	-	-	-	-
	PTFTF	6	4	66.7%	4	66.7%	4	66.7%	4	66.7%	-	-	-	-
	FTTR	369	276	74.8%	184	49.9%	75	20.3%	27	7.3%	-	-	-	-
	PTTR	150	84	56.0%	65	43.3%	44	29.3%	29	19.3%	-	-	-	-
	Total	1,163	906	77.9%	743	63.9%	582	50.0%	247	21.2%	-	-	-	-
2001	FTFTF	628	525	83.6%	468	74.5%	446	71.0%	-	-	-	-	-	-
	PTFTF	5	2	40.0%	2	40.0%	2	40.0%	-	-	-	-	-	-
	FTTR	364	291	79.9%	190	52.2%	70	19.2%	-	-	-	-	-	-
	PTTR	141	92	65.2%	73	51.8%	42	29.8%	-	-	-	-	-	-
	Total	1,138	910	80.0%	733	64.4%	560	49.2%	-	-	-	-	-	-
2002	FTFTF	684	595	87.0%	536	78.4%	-	-	-	-	-	-	-	-
	PTFTF	3	1	33.3%	1	33.3%	-	-	-	-	-	-	-	-
	FTTR	433	338	78.1%	221	51.0%	-	-	-	-	-	-	-	-
	PTTR	135	85	63.0%	59	43.7%	-	-	-	-	-	-	-	-
	Total	1,255	1,019	81.2%	817	65.1%	-	-	-	-	-	-	-	-
2003	FTFTF	725	646	89.1%	-	-	-	-	-	-	-	-	-	-
	PTFTF	0	-	N/A	-	-	-	-	-	-	-	-	-	-
	FTTR	378	315	83.3%	-	-	-	-	-	-	-	-	-	-
	PTTR	120	63	52.5%	-	-	-	-	-	-	-	-	-	-
	Total	1,223	1,024	83.7%	-	-	-	-	-	-	-	-	-	-

* FTFTF=full-time, first-time freshmen; PTFTF=part-time, first-time freshmen; FTTR=full-time transfers; and PTTR=part-time transfers.

NEW UNDERGRADUATE STUDENT COHORT CUMULATIVE GRADUATION RATES

Fall of Entry	Sub-Cohorts*	Original Size	One-Year Cumulative Graduation		Two-Year Cumulative Graduation		Three-Year Cumulative Graduation		Four-Year Cumulative Graduation		Five-Year Cumulative Graduation		Six-Year Cumulative Graduation	
			#	Rate	#	Rate	#	Rate	#	Rate	#	Rate	#	Rate
1994	FTFTF	343	0	0.0%	0	0.0%	1	0.3%	73	21.3%	140	40.8%	155	45.2%
	PTFTF	22	0	0.0%	0	0.0%	0	0.0%	1	4.5%	1	4.5%	1	4.5%
	FTTR	341	4	1.2%	83	24.3%	165	48.4%	204	59.8%	222	65.1%	229	67.2%
	PTTR	212	0	0.0%	8	3.8%	35	16.5%	56	26.4%	72	34.0%	77	36.3%
	Total	918	4	0.4%	91	9.9%	201	21.9%	334	36.4%	435	47.4%	462	50.3%
1995	FTFTF	319	0	0.0%	0	0.0%	1	0.3%	67	21.0%	133	41.7%	149	46.7%
	PTFTF	21	0	0.0%	0	0.0%	0	0.0%	0	0.0%	0	0.0%	1	4.8%
	FTTR	311	0	0.0%	53	17.0%	131	42.1%	169	54.3%	183	58.8%	187	60.1%
	PTTR	197	0	0.0%	4	2.0%	21	10.7%	36	18.3%	49	24.9%	58	29.4%
	Total	848	0	0.0%	57	6.7%	153	18.0%	272	32.1%	365	43.0%	395	46.6%
1996	FTFTF	413	0	0.0%	0	0.0%	4	1.0%	102	24.7%	205	49.6%	224	54.2%
	PTFTF	17	0	0.0%	0	0.0%	0	0.0%	0	0.0%	1	5.9%	1	5.9%
	FTTR	339	1	0.3%	56	16.5%	129	38.1%	176	51.9%	191	56.3%	194	57.2%
	PTTR	210	0	0.0%	8	3.8%	32	15.2%	55	26.2%	65	31.0%	72	34.3%
	Total	979	1	0.1%	64	6.5%	165	16.9%	333	34.0%	462	47.2%	491	50.2%
1997	FTFTF	454	0	0.0%	0	0.0%	1	0.2%	131	28.9%	222	48.9%	244	53.7%
	PTFTF	17	0	0.0%	0	0.0%	0	0.0%	0	0.0%	1	5.9%	1	5.9%
	FTTR	351	2	0.6%	69	19.7%	154	43.9%	195	55.6%	212	60.4%	217	61.8%
	PTTR	208	0	0.0%	6	2.9%	22	10.6%	44	21.2%	55	26.4%	67	32.2%
	Total	1,030	2	0.2%	75	7.3%	177	17.2%	370	35.9%	490	47.6%	529	51.4%
1998	FTFTF	472	0	0.0%	0	0.0%	6	1.3%	170	36.0%	267	56.6%	294	62.3%
	PTFTF	17	0	0.0%	0	0.0%	0	0.0%	1	5.9%	3	17.6%	4	23.5%
	FTTR	351	1	0.3%	70	19.9%	143	40.7%	183	52.1%	200	57.0%	207	59.0%
	PTTR	183	0	0.0%	7	3.8%	25	13.7%	48	26.2%	57	31.1%	64	35.0%
	Total	1,023	1	0.1%	77	7.5%	174	17.0%	402	39.3%	527	51.5%	569	55.6%
1999	FTFTF	528	0	0.0%	1	0.2%	7	1.3%	203	38.4%	288	54.5%	-	-
	PTFTF	8	0	0.0%	0	0.0%	0	0.0%	0	0.0%	0	0.0%	-	-
	FTTR	364	2	0.5%	81	22.3%	159	43.7%	204	56.0%	219	60.2%	-	-
	PTTR	152	0	0.0%	5	3.3%	14	9.2%	32	21.1%	38	25.0%	-	-
	Total	1,052	2	0.2%	87	8.3%	180	17.1%	439	41.7%	545	51.8%	-	-
2000	FTFTF	638	0	0.0%	2	0.3%	10	1.6%	284	44.5%	-	-	-	-
	PTFTF	6	0	0.0%	0	0.0%	0	0.0%	1	16.7%	-	-	-	-
	FTTR	369	3	0.8%	75	20.3%	172	46.6%	216	58.5%	-	-	-	-
	PTTR	150	0	0.0%	4	2.7%	23	15.3%	40	26.7%	-	-	-	-
	Total	1,163	3	0.3%	81	7.0%	205	17.6%	541	46.5%	-	-	-	-
2001	FTFTF	628	0	0.0%	0	0.0%	7	1.1%	-	-	-	-	-	-
	PTFTF	5	0	0.0%	0	0.0%	0	0.0%	-	-	-	-	-	-
	FTTR	364	0	0.0%	78	21.4%	183	50.3%	-	-	-	-	-	-
	PTTR	141	0	0.0%	3	2.1%	21	14.9%	-	-	-	-	-	-
	Total	1,138	0	0.0%	81	7.1%	211	18.5%	-	-	-	-	-	-
2002	FTFTF	684	0	0.0%	0	0.0%	-	-	-	-	-	-	-	-
	PTFTF	3	0	0.0%	0	0.0%	-	-	-	-	-	-	-	-
	FTTR	433	3	0.7%	101	23.3%	-	-	-	-	-	-	-	-
	PTTR	135	0	0.0%	6	4.4%	-	-	-	-	-	-	-	-
	Total	1,255	3	0.2%	107	8.5%	-	-	-	-	-	-	-	-
2003	FTFTF	725	0	0.0%	-	-	-	-	-	-	-	-	-	-
	PTFTF	0	0	N/A	-	-	-	-	-	-	-	-	-	-
	FTTR	378	2	0.5%	-	-	-	-	-	-	-	-	-	-
	PTTR	120	0	0.0%	-	-	-	-	-	-	-	-	-	-
	Total	1,223	2	0.2%	-	-	-	-	-	-	-	-	-	-

* FTFTF=full-time, first-time freshmen; PTFTF=part-time, first-time freshmen; FTTR=full-time transfers; and PTTR=part-time transfers.
Data captures all graduates through August 2003.

SIX-YEAR RETENTION BY ADMIT TYPE FOR FULL-TIME, FIRST-TIME FRESHMEN

Fall of Entry	Sub-Cohorts	Original Size	Retained One-Year		Retained Two-Years		Retained Three-Years		Retained Four-Years		Retained Five-Years		Retained Six-Years	
			#	Rate	#	Rate	#	Rate	#	Rate	#	Rate	#	Rate
1994	Regular	217	152	70.0%	125	57.6%	124	57.1%	61	28.1%	19	8.8%	5	2.3%
	EOF	90	68	75.6%	46	51.1%	37	41.1%	29	32.2%	7	7.8%	2	2.2%
	Special	36	30	83.3%	26	72.2%	23	63.9%	16	44.4%	5	13.9%	3	8.3%
	Total	343	250	72.9%	197	57.4%	184	53.6%	106	30.9%	31	9.0%	10	2.9%
1995	Regular	183	140	76.5%	113	61.7%	110	60.1%	53	29.0%	14	7.7%	9	4.9%
	EOF	97	74	76.3%	46	47.4%	40	41.2%	32	33.0%	15	15.5%	6	6.2%
	Special	39	33	84.6%	25	64.1%	24	61.5%	14	35.9%	4	10.3%	0	0.0%
	Total	319	247	77.4%	184	57.7%	174	54.5%	99	31.0%	33	10.3%	15	4.7%
1996	Regular	296	239	80.7%	202	68.2%	184	62.2%	102	34.5%	25	8.4%	15	5.1%
	EOF	74	68	91.9%	52	70.3%	46	62.2%	34	45.9%	10	13.5%	6	8.1%
	Special	43	30	69.8%	27	62.8%	25	58.1%	17	39.5%	3	7.0%	1	2.3%
	Total	413	337	81.6%	281	68.0%	255	61.7%	153	37.0%	38	9.2%	22	5.3%
1997	Regular	340	262	77.1%	220	64.7%	212	62.4%	100	29.4%	31	9.1%	15	4.4%
	EOF	67	60	89.6%	52	77.6%	52	77.6%	35	52.2%	9	13.4%	4	6.0%
	Special	47	37	78.7%	34	72.3%	30	63.8%	27	57.4%	5	10.6%	3	6.4%
	Total	454	359	79.1%	306	67.4%	294	64.8%	162	35.7%	45	9.9%	22	4.8%
1998	Regular	352	295	83.8%	271	77.0%	246	69.9%	124	35.2%	35	9.9%	17	4.8%
	EOF	69	57	82.6%	46	66.7%	42	60.9%	23	33.3%	7	10.1%	1	1.4%
	Special	51	40	78.4%	36	70.6%	33	64.7%	20	39.2%	5	9.8%	4	7.8%
	Total	472	392	83.1%	353	74.8%	321	68.0%	167	35.4%	47	10.0%	22	4.7%
1999	Regular	414	330	79.7%	292	70.5%	270	65.2%	104	25.1%	30	7.2%	-	-
	EOF	60	56	93.3%	44	73.3%	41	68.3%	21	35.0%	8	13.3%	-	-
	Special	54	49	90.7%	42	77.8%	37	68.5%	21	38.9%	4	7.4%	-	-
	Total	528	435	82.4%	378	71.6%	348	65.9%	146	27.7%	42	8.0%	-	-
2000	Regular	511	439	85.9%	399	78.1%	380	74.4%	144	28.2%	-	-	-	-
	EOF	64	55	85.9%	50	78.1%	41	64.1%	23	35.9%	-	-	-	-
	Special	63	48	76.2%	41	65.1%	38	60.3%	20	31.7%	-	-	-	-
	Total	638	542	85.0%	490	76.8%	459	71.9%	187	29.3%	-	-	-	-
2001	Regular	497	414	83.3%	370	74.4%	353	71.0%	-	-	-	-	-	-
	EOF	69	60	87.0%	54	78.3%	52	75.4%	-	-	-	-	-	-
	Special	62	51	82.3%	44	71.0%	41	66.1%	-	-	-	-	-	-
	Total	628	525	83.6%	468	74.5%	446	71.0%	-	-	-	-	-	-
2002	Regular	543	485	89.3%	439	80.8%	-	-	-	-	-	-	-	-
	EOF	73	60	82.2%	51	69.9%	-	-	-	-	-	-	-	-
	Special	68	50	73.5%	46	67.6%	-	-	-	-	-	-	-	-
	Total	684	595	87.0%	536	78.4%	-	-	-	-	-	-	-	-
2003	Regular	582	524	90.0%	-	-	-	-	-	-	-	-	-	-
	EOF	70	61	87.1%	-	-	-	-	-	-	-	-	-	-
	Special	73	61	83.6%	-	-	-	-	-	-	-	-	-	-
	Total	725	646	89.1%	-	-	-	-	-	-	-	-	-	-

TEN-YEAR CUMULATIVE GRADUATION RATES BY ADMIT TYPE FOR FULL-TIME, FIRST-TIME FRESHMEN

Fall of Entry	Sub-Cohorts	Original Size	Four-Year Cumulative Graduation [1]		Five-Year Cumulative Graduation		Six-Year Cumulative Graduation		Seven-Year Cumulative Graduation		Eight-Year Cumulative Graduation		Nine-Year Cumulative Graduation		Ten-Year Cumulative Graduation	
			#	Rate	#	Rate	#	Rate	#	Rate	#	Rate	#	Rate	#	Rate
1990	Regular	274	55	20.1%	98	35.8%	104	38.0%	108	39.4%	110	40.1%	112	40.9%	112	40.9%
	EOF	100	3	3.0%	13	13.0%	20	20.0%	24	24.0%	24	24.0%	24	24.0%	25	25.0%
	Special	47	3	6.4%	8	17.0%	8	17.0%	9	19.1%	9	19.1%	10	21.3%	10	21.3%
	Total	421	61	14.5%	119	28.3%	132	31.4%	141	33.5%	143	34.0%	146	34.7%	147	34.9%
1991	Regular	298	57	19.1%	119	39.9%	131	44.0%	135	45.3%	135	45.3%	137	46.0%	137	46.0%
	EOF	85	3	3.5%	11	12.9%	14	16.5%	17	20.0%	17	20.0%	18	21.2%	18	21.2%
	Special	42	9	21.4%	13	31.0%	16	38.1%	18	42.9%	18	42.9%	18	42.9%	19	45.2%
	Total	425	69	16.2%	143	33.6%	161	37.9%	170	40.0%	170	40.0%	173	40.7%	174	40.9%
1992	Regular	279	71	25.4%	126	45.2%	136	48.7%	139	49.8%	142	50.9%	142	50.9%	142	50.9%
	EOF	98	2	2.0%	16	16.3%	21	21.4%	22	22.4%	22	22.4%	22	22.4%	22	22.4%
	Special	42	4	9.5%	10	23.8%	15	35.7%	16	38.1%	16	38.1%	16	38.1%	16	38.1%
	Total	419	77	18.4%	152	36.3%	172	41.1%	177	42.2%	180	43.0%	180	43.0%	180	43.0%
1993	Regular	240	58	24.2%	105	43.8%	111	46.3%	113	47.1%	113	47.1%	113	47.1%	113	47.1%
	EOF	83	1	1.2%	8	9.6%	13	15.7%	15	18.1%	16	19.3%	16	19.3%	16	19.3%
	Special	39	3	7.7%	14	35.9%	17	43.6%	17	43.6%	17	43.6%	17	43.6%	19	48.7%
	Total	362	62	17.1%	127	35.1%	141	39.0%	145	40.1%	146	40.3%	146	40.3%	148	40.9%
1994	Regular	217	60	27.6%	100	46.1%	111	51.2%	115	53.0%	115	53.0%	117	53.9%	117	53.9%
	EOF	90	6	6.7%	23	25.6%	25	27.8%	26	28.9%	26	28.9%	26	28.9%	26	28.9%
	Special	36	7	19.4%	17	47.2%	19	52.8%	20	55.6%	20	55.6%	20	55.6%	20	55.6%
	Total	343	73	21.3%	140	40.8%	155	45.2%	161	46.9%	161	46.9%	163	47.5%	163	47.5%
1995	Regular	183	52	28.4%	95	51.9%	98	53.6%	99	54.1%	100	54.6%	101	55.2%	-	-
	EOF	97	4	4.1%	17	17.5%	27	27.8%	30	30.9%	32	33.0%	33	34.0%	-	-
	Special	39	11	28.2%	21	53.8%	24	61.5%	24	61.5%	24	61.5%	24	61.5%	-	-
	Total	319	67	21.0%	133	41.7%	149	46.7%	153	48.0%	156	48.9%	158	49.5%	-	-
1996	Regular	296	87	29.4%	155	52.4%	169	57.1%	172	58.1%	173	58.4%	-	-	-	-
	EOF	74	9	12.2%	27	36.5%	32	43.2%	33	44.6%	34	45.9%	-	-	-	-
	Special	43	6	14.0%	23	53.5%	23	53.5%	23	53.5%	23	53.5%	-	-	-	-
	Total	413	102	24.7%	205	49.6%	224	54.2%	228	55.2%	230	55.7%	-	-	-	-
1997	Regular	340	114	33.5%	172	50.6%	186	54.7%	190	55.9%	-	-	-	-	-	-
	EOF	67	11	16.4%	29	43.3%	34	50.7%	36	53.7%	-	-	-	-	-	-
	Special	47	6	12.8%	21	44.7%	24	51.1%	25	53.2%	-	-	-	-	-	-
	Total	454	131	28.9%	222	48.9%	244	53.7%	251	55.3%	-	-	-	-	-	-
1998	Regular	352	122	34.7%	211	59.9%	231	65.6%	-	-	-	-	-	-	-	-
	EOF	69	15	21.7%	33	47.8%	37	53.6%	-	-	-	-	-	-	-	-
	Special	51	13	25.5%	23	45.1%	26	51.0%	-	-	-	-	-	-	-	-
	Total	472	150	31.8%	267	56.6%	294	62.3%	-	-	-	-	-	-	-	-
1999	Regular	414	172	41.5%	235	56.8%	-	-	-	-	-	-	-	-	-	-
	EOF	60	20	33.3%	27	45.0%	-	-	-	-	-	-	-	-	-	-
	Special	54	11	20.4%	26	48.1%	-	-	-	-	-	-	-	-	-	-
	Total	528	203	38.4%	288	54.5%	-	-	-	-	-	-	-	-	-	-
2000	Regular	511	250	48.9%	-	-	-	-	-	-	-	-	-	-	-	-
	EOF	64	16	25.0%	-	-	-	-	-	-	-	-	-	-	-	-
	Special	63	18	28.6%	-	-	-	-	-	-	-	-	-	-	-	-
	Total	638	284	44.5%	-	-	-	-	-	-	-	-	-	-	-	-

[1] Includes all from cohort who are graduated in fewer than four years.