

SECTION VI:

STUDENT SERVICES

2003 INSTITUTIONAL PROFILE

CENTER FOR HEALTH AND COUNSELING SERVICES

	FY 99/00	FY 00/01	FY 01/02	FY 02/03	FY 03/04	Percent Change in Visits 99/00 to 03/04	Percent Change in Visits 02/03 to 03/04
	Visits	Visits	Visits	Visits	Visits		
Counseling & Psychological Services							
Counseling (individual)	1,691	1,691	1,706	1,066	1,342	-20.6%	25.9%
Counseling (group) ^[1]	25	25	27	30	30	20.0%	0.0%
Evaluations: Substance Abuse	217	217	234	419	319	47.0%	-23.9%
Crisis Intervention	58	58	80	39	61	5.2%	56.4%
Informal ^[2]	13	13	10	29	80	515.4%	175.9%
Consultations							
Faculty/Staff	43	43	55	50	55	27.9%	10.0%
Student / Other Groups ^[3]	17	17	12	40	62	264.7%	55.0%
Supervision							
Student / Other Groups ^[4]	6	6	39	41	77	1183.3%	87.8%

[1] Indicates number of groups held

[2] Increase partly reflects changes in recording method

[3] Increase reflects growing demand for these services

[4] Increase reflects growing use of student peers

HEALTH SERVICES

Visitors	AY 99/00	AY 00/01	AY 01/02	AY 02/03	AY 03/04	Percent	Percent
						Change	Change
						99/00 to 03/04	02/03 to 03/04
Minor Medical	2,259	2,433	2,967	2,871	3,428	51.7%	19.4%
Counsel & Referral	38	66	65	74	67	76.3%	-9.5%
Information/Literature	318	283	240	220	298	-6.3%	35.5%
Pre-employment Physicals	33	24	19	18	18	-45.5%	0.0%
Mantoux Tests	169	257	298	365	336	98.8%	-7.9%
Athletic Physicals [1]	301	24	11	0	0	-100.0%	N/A
Athletic Physical Re-check[1]	108	126	4	0	0	-100.0%	N/A
Blood Pressure Checks	80	76	76	57	98	22.5%	71.9%
Worker's Compensation	30	16	21	29	22	-26.7%	-24.1%
Insurance Information	165	151	138	151	165	0.0%	9.3%
Condom Sales	28	33	59	59	63	125.0%	6.8%
Immunization Records	556	756	828	1,044	988	77.7%	-5.4%
HIV Testing [2]	21	0	0	0	0	-100.0%	N/A
Flu Shots	50	75	75	77	72	44.0%	-6.5%
Blood Drive Participants	63	49	0	100	159	152.4%	59.0%
Other	<u>1,098</u>	<u>781</u>	<u>472</u>	<u>461</u>	<u>529</u>	<u>-51.8%</u>	<u>14.8%</u>
TOTALS	5,317	5,150	5,273	5,526	6,243	17.4%	13.0%

[1] Athletic Physicals and Re-checks were transferred to the Athletic department in Fall 2000.

[2] HIV Testing was performed onsite until grant provisions disqualified eligibility for services in 2000.

**CAHILL CENTER
COOPERATIVE EDUCATION**

	99/00	00/01	01/02	02/03	03/04	Percent Change 99/00 to 03/04	Percent Change 02/03 to 03/04
Number of Employers	284	245	243	271	263	-7.4%	-3.0%
Number of Students:							
Female	190	167	170	189	196	3.2%	3.7%
Male	<u>171</u>	<u>164</u>	<u>113</u>	<u>143</u>	<u>163</u>	<u>-4.7%</u>	<u>14.0%</u>
Total Students	361	331	283	332	359	-0.6%	8.1%
Dollars Earned	\$1,589,697	\$1,675,722	\$1,034,756	\$1,256,294	\$1,115,347	-29.8%	-11.2%
Credits Earned	1,485	1,371	1,137	1,290	1,365	-8.1%	5.8%

CAREER SERVICES

	99/00	00/01	01/02	02/03	03/04	Percent Change 99/00 to 03/04	Percent Change 02/03 to 03/04
Course Participants	122	129	140	133	151	-11.92%	-5.00%
Job Fair Participants	875	975	950	1250	1200	4.17%	31.58%

STUDENT ASSISTANT PROGRAM

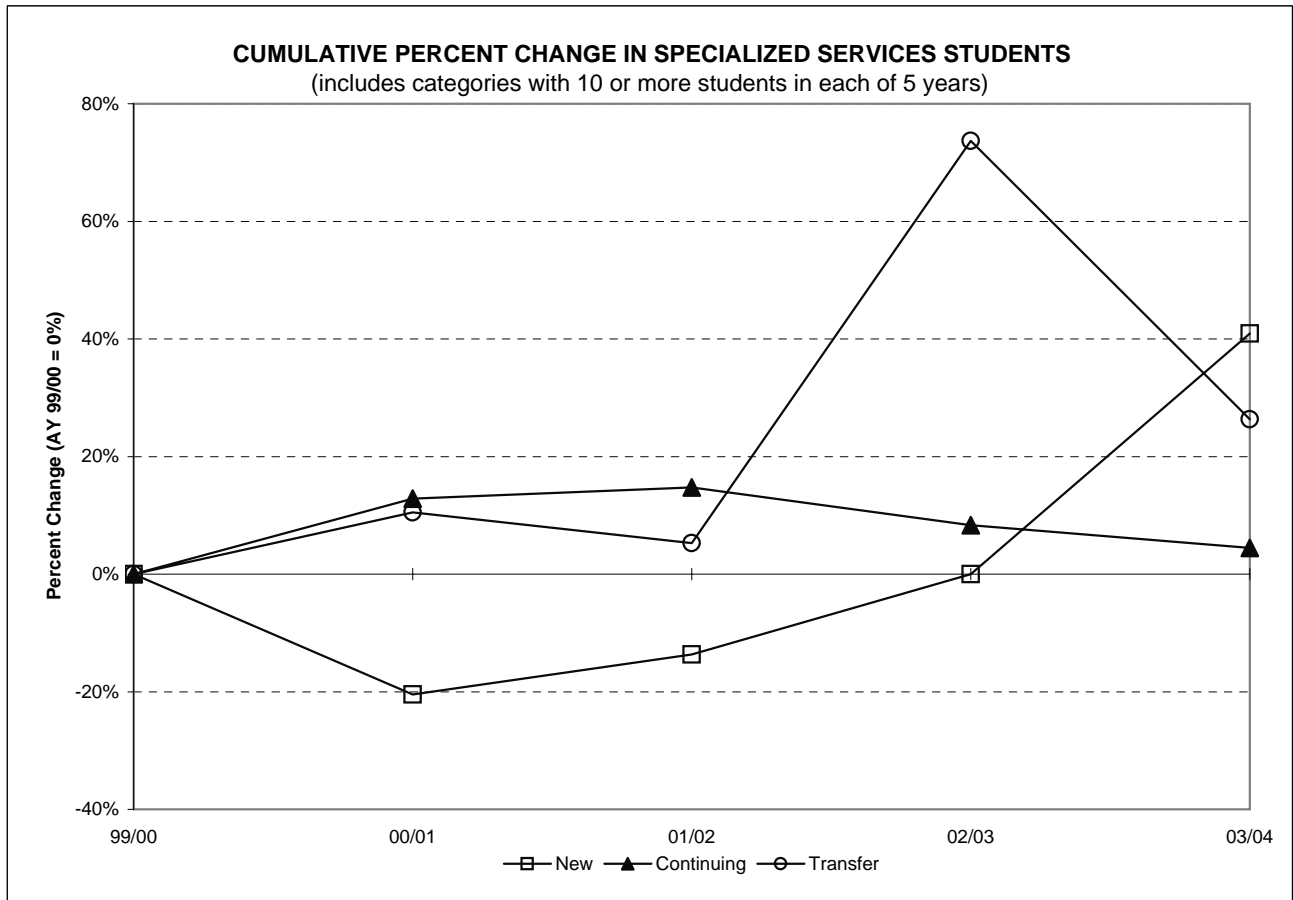
	99/00	00/01	01/02	02/03	03/04	Percent Change 99/00 to 03/04	Percent Change 02/03 to 03/04
Student Workers [1]	530	480	491	711	706	33.21%	-0.70%

[1] The Cahill Center acquired responsibility in 2002 for managing students assigned to perform special projects for faculty.

SPECIALIZED SERVICES

Students	99/00	00/01	01/02	02/03	03/04	Percent Change	Percent Change
						99/00 to 03/04	02/03 to 03/04
New [1]	44	35	38	44	62	40.9%	40.9%
Continuing	156	176	179	169	163	4.5%	-3.6%
Transfer	19	21	20	33	24	26.3%	-27.3%
Re-Admits	0	2	0	1	3	N/A	200.0%
Total	219	234	237	247	252	15.1%	2.0%

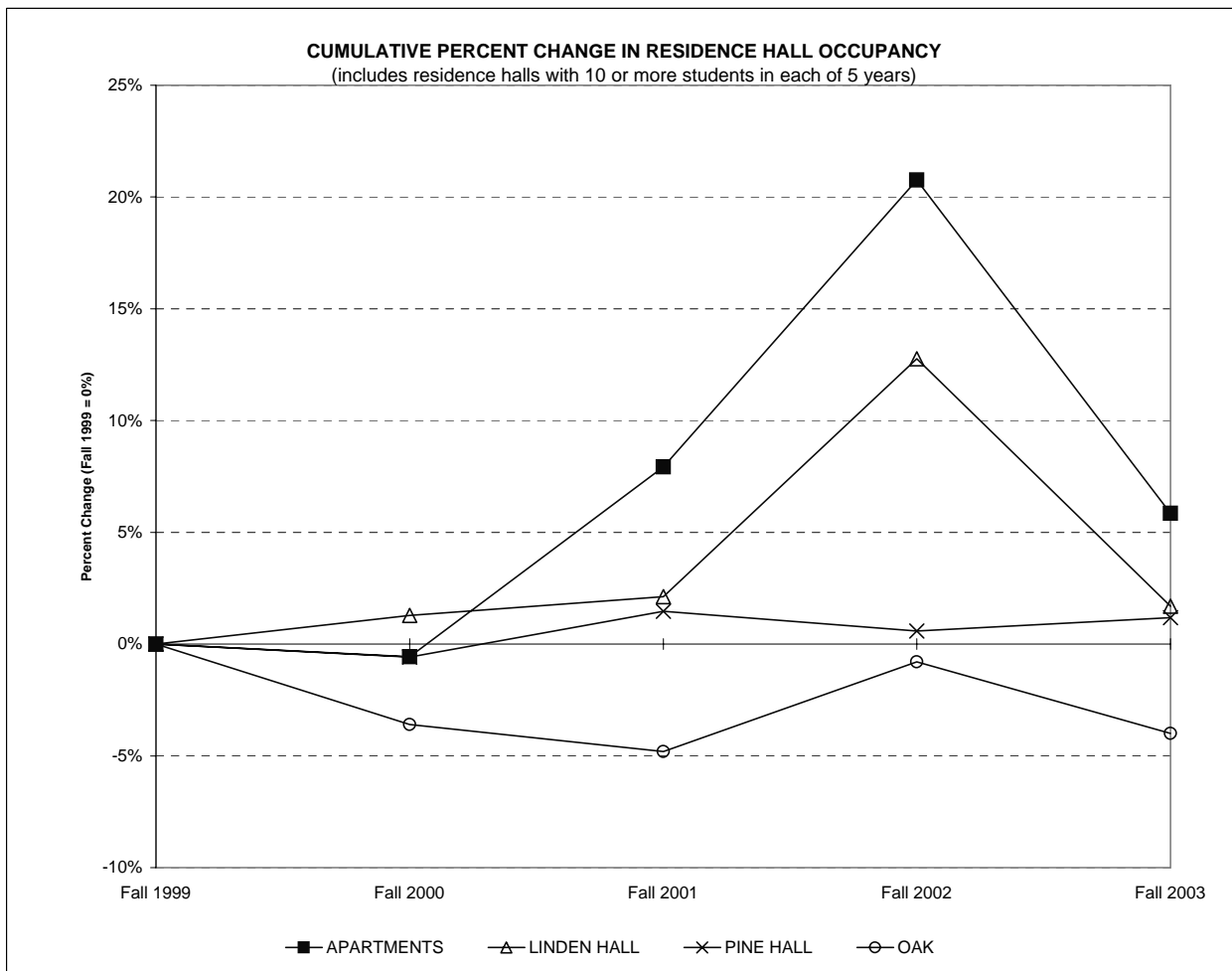
[1] Includes students already enrolled at Ramapo College for one or more semesters, but new to the Office of Specialized Services, and new first-time freshmen.



FALL SEMESTER RESIDENCE HALL OCCUPANCY, 1999 TO 2003 [1]

	Fall 1999		Fall 2000		Fall 2001		Fall 2002		Fall 2003		Percent Change 99 to 03	Percent Change 02 to 03
	Number	Percent	Number	Percent	Number	Percent	Number	Percent	Number	Percent		
APARTMENTS	530	36.6%	527	30.8%	572	30.1%	640	31.0%	561	24.7%	5.8%	-12.3%
LINDEN HALL	235	16.2%	238	13.9%	240	12.6%	265	12.8%	239	10.5%	1.7%	-9.8%
LODGE	13	0.9%	14	0.8%	14	0.7%	17	0.8%	7	0.3%	-46.2%	-58.8%
OAK	250	17.2%	241	14.1%	238	12.5%	248	12.0%	240	10.6%	-4.0%	-3.2%
MAPLE	-	-	354	20.7%	359	18.9%	361	17.5%	359	15.8%	N/A	-0.6%
PINE HALL	340	23.4%	338	19.7%	345	18.1%	342	16.6%	344	15.1%	1.2%	0.6%
OVERFLOW/HOTEL	82	5.7%	-	-	135	7.1%	1	0.0%	-	-	N/A	N/A
VILLAGE	-	-	-	-	-	-	191	9.2%	523	23.0%	N/A	173.8%
TOTAL	1,450		1,712		1,903		2,065		2,273		56.8%	10.1%

[1] Occupancy as of the 10th day of the semester as reported in the Registrar's o



FINANCING FOR RESIDENCE LIFE, STUDENT CENTER, AND EDUCATIONAL PROJECTS [1]

New Jersey Educational Facilities Bond	Name	Interest Rate	Outstanding	Outstanding	Year Paid in Full
			Principal Payments Jun-02 (000)	Principal Payments Jun-03 (000)	
<u>Residence Life</u>					
Series 1973A	Phase I	5.300% to 5.600%	\$225	\$115	2003
Series 1993E [2]	Pine & Linden	3.500% to 5.500%	\$12,415	\$0	n/a
Series 1998G	Oak Hall/Pavillion	4.100% to 4.625%	\$16,150	\$15,830	2028
Series 1999E	Maple Hall/Pavillion Expansion	5.250% to 5.600%	\$19,900	\$19,580	2029
Series 2001D	The Village/Apt. Wiring	4.800% to 5.000%	\$40,480	\$40,480	2031
Series 2002H	Village Completion/Overlook	2.500% to 5.000%	\$0	\$28,655	2032
Series 2003G [2]	Pine & Linden	2.00% to 3.709%	\$0	\$9,300	2013
<u>Student Center</u>					
Series 1993D [3]	Student Center Annex	3.500% to 5.500%	\$2,285	\$0	n/a
Series 1998H	Student Center Renovations	4.100% to 4.600%	\$1,745	\$1,630	2013
Series 2002I	Student Center Renovations	2.500% to 5.00%	\$0	\$2,145	2032
Series 2003F [3]	Student Center Annex	1.500% to 3.500%	\$0	\$1,820	2013
<u>Educational & General</u>					
Series 1997A	Berrie Center	4.900% to 5.150%	\$7,330	\$0	2003
Series 1998I	Voice, Video, Data	4.100% to 4.500%	\$735	\$645	2008
Series 2000B	Higher Ed Capital Bond Fund	4.500% to 5.750%	\$2,468	\$2,387	2021
Series 2001A	Dormitory Safety		\$964	\$895	2016
Series 2001E	Sustainability Center/Equip.	3.600% to 4.000%	\$2,535	\$2,225	2008
Series 2002A	Higher Ed Capital Bond Fund	3.00% to 5.250%	\$0	\$1,849	2022
Series 2002J	Bradley Center/Havemeyer House	2.500% to 5.00%	\$0	\$29,620	2032
Series 2003A	Equipment Leasing Fund	2.500% to 5.00%	\$0	\$467	2009
			<u>\$107,232</u>	<u>\$157,643</u>	

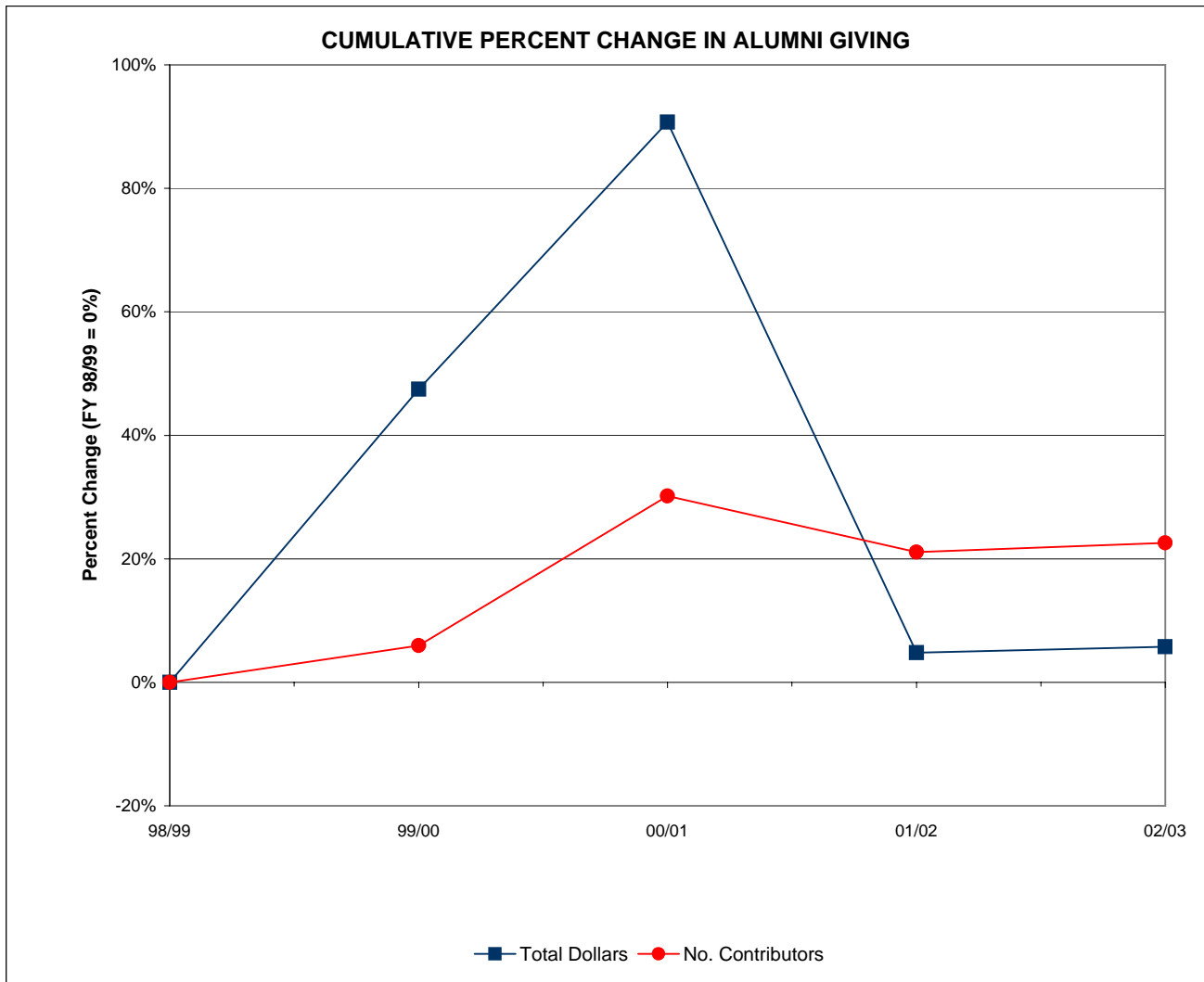
[1] The College has pledged all revenues generated from the operation of the residential facilities, the student center building and from other legally available funds of the College under the aforementioned capital lease agreements.

[2] Series 2003G replaced series 1993E through refinancing.

[3] Series 2003F replaced series 1993D through refinancing.

ALUMNI GIVING, FISCAL YEAR 1999 TO FISCAL YEAR 2003

Giving	98/99	99/00	00/01	01/02	02/03	Percent Change	Percent Change
						98/99 to 02/03	01/02 to 02/03
Total Dollars	\$90,225	\$133,056	\$172,080	\$94,548	\$95,423	5.8%	0.9%
Number of Donors	1,005	1,065	1,308	1,217	1,232	22.6%	1.2%
Average Alumni Donation	\$89.78	\$124.94	\$131.56	\$77.69	\$77.46	-13.7%	-0.3%
Number of Alumni Solicited	11,771	12,219	14,718	15,047	15,384	30.7%	2.2%
Phonathon New Donors	156	249	375	326	346	121.8%	6.1%

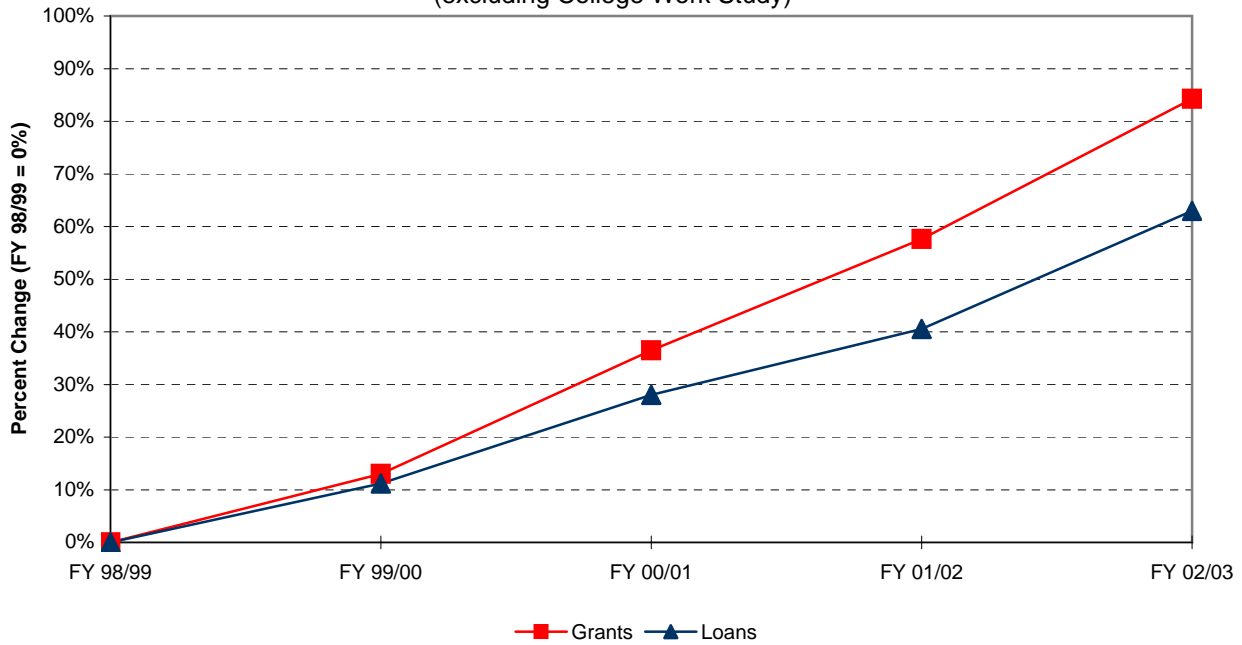


STUDENT FINANCIAL AID, FY 1999 TO FY 2003

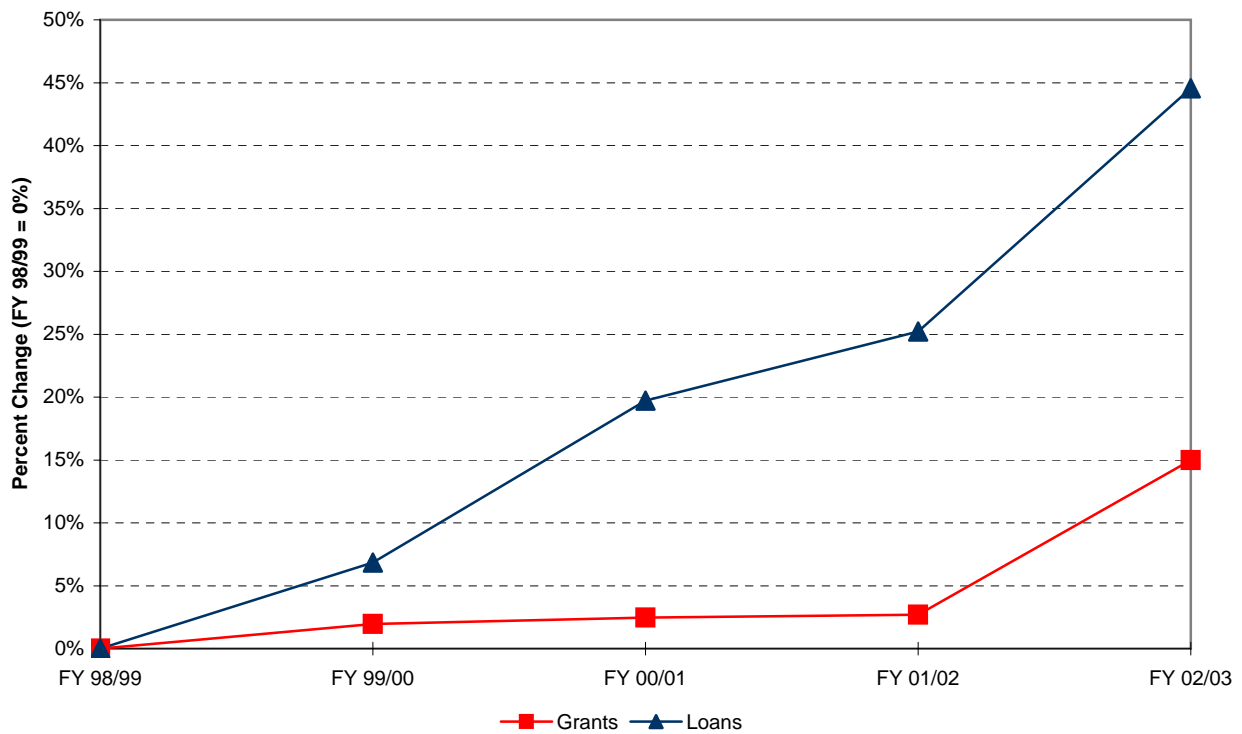
<i>Financial Aid Dollars</i>	FY 98/99	FY 99/00	FY 00/01	FY 01/02	FY 02/03	Percent Change	Percent Change
	\$	\$	\$	\$	\$	98/99 to 02/03	01/02 to 02/03
Pell Grants	\$1,674,000	\$1,686,455	\$1,929,106	\$2,190,637	\$2,401,840	43.5%	9.6%
College Work Study	\$196,000	\$201,236	\$212,131	\$195,703	\$250,195	27.7%	27.8%
Perkins Loans	\$77,000	\$97,052	\$110,164	\$114,784	\$192,813	150.4%	68.0%
Stafford Loans (total)	\$6,639,000	\$7,289,817	\$8,196,464	\$8,796,481	\$9,564,939	44.1%	8.7%
Subsidized	\$4,135,000	\$4,352,799	\$4,776,631	\$5,081,336	\$5,761,135	39.3%	13.4%
Un-subsidized	\$2,504,000	\$2,937,018	\$3,419,833	\$3,715,145	\$3,803,804	51.9%	2.4%
SEOG	\$210,000	\$215,222	\$214,980	\$22,855	\$233,320	11.1%	920.9%
Parents Loans for Dependent Students (PLUS)	\$449,000	\$581,417	\$866,790	\$1,160,592	\$1,921,468	327.9%	65.6%
Ramapo College Grant	\$391,223	\$337,779	\$379,902	\$403,702	\$470,677	20.3%	16.6%
TAG	\$1,662,676	\$1,818,435	\$2,210,396	\$2,360,593	\$2,440,560	46.8%	3.4%
Educational Opportunity Fund (EOF)	\$307,680	\$311,891	\$353,411	\$292,505	\$318,206	3.4%	8.8%
New Jersey Class Loans	\$451,461	\$902,439	\$1,254,686	\$1,941,112	\$2,541,377	462.9%	30.9%
Total	\$12,058,040	\$13,441,743	\$15,728,030	\$17,478,964	\$20,335,395	68.6%	16.3%

<i>Financial Aid Recipients</i>	FY 98/99	FY 99/00	FY 00/01	FY 01/02	FY 02/03	Percent Change	Percent Change
	#	#	#	#	#	98/99 to 02/03	01/02 to 02/03
Pell Grants	848	831	866	854	924	9.0%	8.2%
College Work Study	173	191	187	172	201	16.2%	16.9%
Perkins Loans	73	85	96	95	163	123.3%	71.6%
Stafford Loans (total)	1,974	2,095	2,317	2,413	2,649	34.2%	9.8%
Subsidized	1,195	1,244	1,355	1,422	1,597	33.6%	12.3%
Un-subsidized	779	851	962	991	1,052	35.0%	6.2%
SEOG	190	191	191	195	222	16.8%	13.8%
Parents Loans for Dependent Students (PLUS)	103	117	161	184	296	187.4%	60.9%
Ramapo College Grant	241	279	163	95	160	-33.6%	68.4%
TAG	776	736	775	785	819	5.5%	4.3%
Educational Opportunity Fund (EOF)	269	268	278	276	267	-0.7%	-3.3%
New Jersey Class Loans	88	148	201	272	339	285.2%	24.6%
Total	4,735	4,941	5,235	5,341	6,040	27.6%	13.1%

CUMULATIVE PERCENT CHANGE IN FINANCIAL AID DOLLARS BY SOURCE
(excluding College Work Study)



CUMULATIVE PCT. CHANGE IN NO. OF FINANCIAL AID RECIPIENTS BY SOURCE
(excluding College Work Study)



CAMPUS SECURITY ANNUAL REPORT [1]

Reported Occurrences	97/98	98/99	99/00	00/01	01/02	Percent Change 97/98 to 01/02	Percent Change 00/01 to 01/02
	Criminal Homicide	0	0	0	0	0	N/A
<i>Sexual Offenses:</i>							
Forcible: Rape, Sodomy, Assault (with an object), Fondling	1	1	6	3	7	600.0%	133.3%
Non-Forcible: Incest, Statutory Rape	0	0	0	0	0	N/A	N/A
Robbery	0	0	0	0	2	N/A	N/A
Aggravated Assault	7	11	5	2	1	-85.7%	-50.0%
Burglary	25	20	23	22	21	-16.0%	-4.5%
Motor Vehicle Theft	0	0	0	2	4	N/A	100.0%
Arrests:							
Weapon Law Violation	0	1	0	0	0	N/A	N/A
Drug Abuse Violation	3	6	16	19	7	133.3%	-63.2%
Liquor Law Violation	0	0	3	0	0	N/A	N/A

[1] Crime statistics reported using FBI definitions. Figures are most current available.

STUDENT PARTICIPATION IN STUDY ABROAD AND OTHER OFF-CAMPUS PROGRAMS, 2000 TO 2004 [1]

All Students	AY 99-00		AY 00-01		AY 01-02		AY 02-03		AY 03-04		Percent Change 99/00 to 03/04	Percent Change 02/03 to 03/04
	No.	Pct.	No.	Pct.	No.	Pct.	No.	Pct.	No.	Pct.		
American Southwest	20	11.4%	15	9.7%	11	6.2%	14	7.8%	21	9.5%	5.0%	50.0%
American West	0	0.0%	9	5.8%	18	10.2%	8	4.5%	10	4.5%	N/A	25.0%
Australia [2]	-	-	-	-	-	-	-	-	3	1.4%	N/A	N/A
China	0	0.0%	0	0.0%	20	11.3%	0	0.0%	0	0.0%	N/A	N/A
Costa Rica [3]	26	14.8%	34	21.9%	31	17.5%	29	16.2%	22	10.0%	-15.4%	-24.1%
England [4]	50	28.4%	50	32.3%	30	16.9%	63	35.2%	84	38.2%	68.0%	33.3%
India [5]	-	-	-	-	-	-	-	-	13	5.9%	N/A	N/A
Ireland	14	8.0%	18	11.6%	21	11.9%	19	10.6%	38	17.3%	171.4%	100.0%
Israel	0	0.0%	1	0.6%	0	0.0%	0	0.0%	0	0.0%	N/A	N/A
Italy [6]	8	4.5%	4	2.6%	12	6.8%	0	0.0%	3	1.4%	-62.5%	N/A
Jamaica	-	-	-	-	16	9.0%	16	8.9%	16	7.3%	N/A	0.0%
Prague	12	6.8%	13	8.4%	7	4.0%	10	5.6%	6	2.7%	-50.0%	-40.0%
Quebec City	37	21.0%	0	0.0%	2	1.1%	3	1.7%	2	0.9%	-94.6%	-33.3%
South Africa [7]	-	-	-	-	-	-	10	5.6%	0	0.0%	N/A	-100.0%
Washington D.C. Internship [8]	-	-	-	-	-	-	2	1.1%	2	0.9%	N/A	0.0%
Other Programs [9]	9	5.1%	11	7.1%	9	5.1%	5	-	0	0.0%	N/A	N/A
Total	176		155		177		179		220		25.0%	22.9%

- [1] These numbers include students from both Ramapo College and other campuses.
- [2] The Australia program is a credit-bearing semester sponsored by Ramapo as of 2004.
- [3] The Costa Rica program includes credit-bearing trips (the Intensa Spanish Language program and the Eco-Program).
- [4] The England program includes credit-bearing trips as well as the Regent's program semester study.
- [5] The India program is a credit-bearing semester sponsored by Ramapo as of 2004.
- [6] The Italy program includes credit bearing trips to Rome or Matera.
- [7] The South African program includes credit-bearing trips sponsored by Ramapo as of 2001.
- [8] The Washington DC program is a credit-bearing semester sponsored by Ramapo. Previously it was included in "Other".
- [9] Represents Ramapo College student participation in non-Ramapo sponsored programs.

