

SECTION IV:

DEGREES AWARDED AND

STUDENT OUTCOMES

2003 INSTITUTIONAL PROFILE

TOTAL 2002-03 DEGREES AWARDED = 1,006

By Age

	Bachelor's		Master's		Total	
Less than 20	0	0.0%	0	0.0%	0	0.0%
20 to 24	557	61.3%	0	0.0%	557	55.4%
25 to 29	184	20.3%	20	20.4%	204	20.3%
30 to 39	90	9.9%	33	33.7%	123	12.2%
Greater than 39	77	8.5%	45	45.9%	122	12.1%
	908		98		1,006	

By Sex

	Bachelor's		Master's		Total	
Female	597	65.7%	75	76.5%	672	66.8%
Male	311	34.3%	23	23.5%	334	33.2%
	908		98		1,006	

By Ethnicity

	Bachelor's		Master's		Total	
American Indian/Native Alaskan	5	0.6%	1	1.0%	6	0.6%
Asian/Pacific Islander	48	5.3%	0	0.0%	48	4.8%
Black, non-Hispanic	65	7.2%	3	3.1%	68	6.8%
Hispanic	72	7.9%	1	1.0%	73	7.3%
White, non-Hispanic	718	79.1%	93	94.9%	811	80.6%
	908		98		1,006	

By Citizenship

	Bachelor's		Master's		Total	
U.S. Citizen/Permanent Resident	872	96.0%	96	98.0%	968	96.2%
non-Citizen/non-Resident	36	4.0%	2	2.0%	38	3.8%
	908		98		1,006	

By Ethnicity and Citizenship

	Bachelor's		Master's		Total	
American Indian/Native Alaskan	5	0.6%	1	1.0%	6	0.6%
Asian/Pacific Islander	36	4.0%	0	0.0%	36	3.6%
Black, non-Hispanic	60	6.6%	3	3.1%	63	6.3%
Hispanic	70	7.7%	1	1.0%	71	7.1%
White, non-Hispanic	701	77.2%	91	92.9%	792	78.7%
Nonresident Alien	36	4.0%	2	2.0%	38	3.8%
	908		98		1,006	

By Status When First Admitted

	Bachelor's		Master's		Total	
Regular Admit	337	37.1%	98	100.0%	435	43.2%
Special Admit	28	3.1%	0	0.0%	28	2.8%
EOF Admit	45	5.0%	0	0.0%	45	4.5%
Transfer Admit	493	54.3%	0	0.0%	493	49.0%
EOF Transfer Admit	5	0.6%	0	0.0%	5	0.5%
	908		98		1,006	

By Degree Type

	Bachelor's		Master's		Total	
Bachelor of Arts (BA)	541	59.6%	0	0.0%	541	53.8%
Bachelor of Science (BS)	278	30.6%	0	0.0%	278	27.6%
Bachelor of Science in Nursing (BSN)	69	7.6%	0	0.0%	69	6.9%
Bachelor of Social Work (BSW)	20	2.2%	0	0.0%	20	2.0%
Master of Arts in Liberal Studies (MA)	0	0.0%	10	10.2%	10	1.0%
Master of Business Administration (MBA)	0	0.0%	8	8.2%	8	0.8%
Master of Science in Educational Technology (MS)	0	0.0%	80	81.6%	80	8.0%
	908		98		1,006	

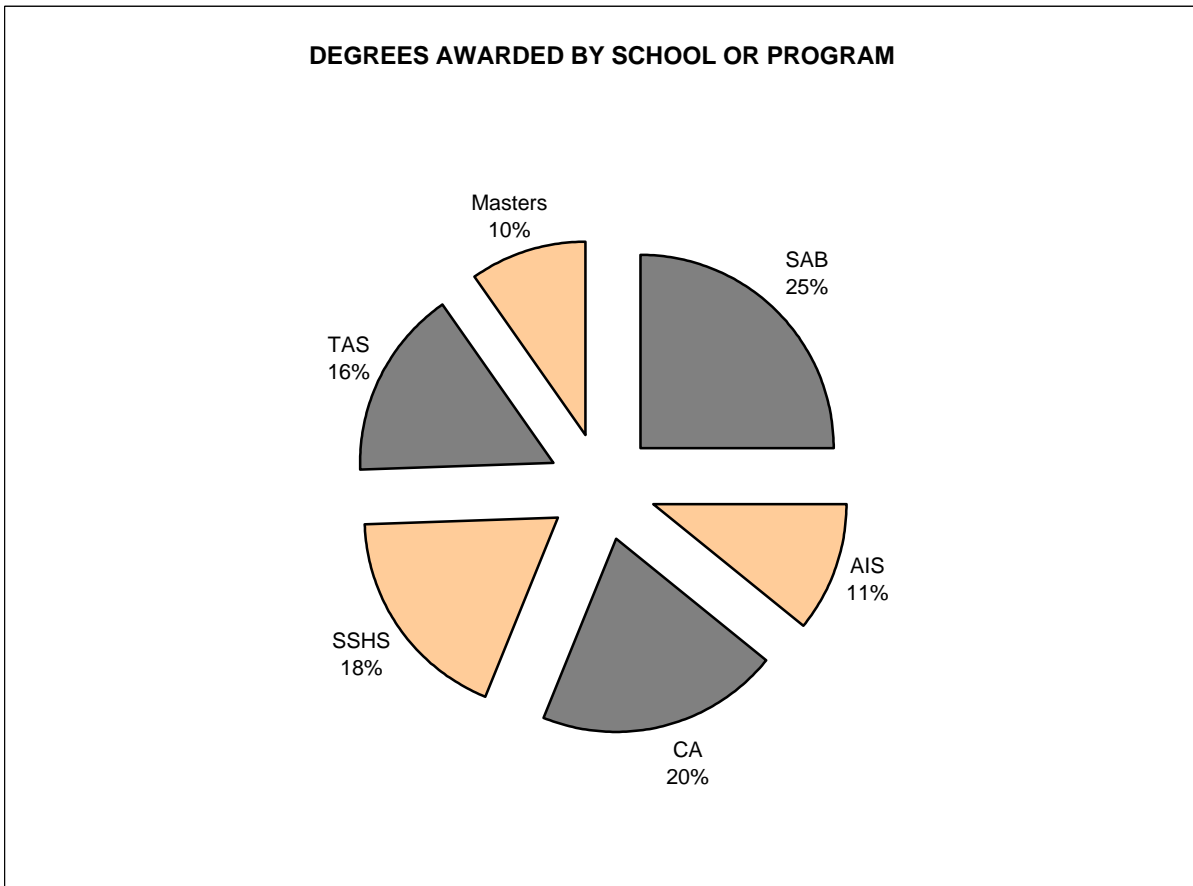
TOTAL 2002-03 DEGREES AWARDED = 1,006

	Bachelor of Arts (BA)		Bachelor of Science (BS)		Bachelor of Science in Nursing (BSN)		Bachelor of Social Work (BSW)		Master of Arts in Liberal Studies (MA)		Master of Business Admin. (MBA)		Master of Science in Ed. Tech. (MS)	
	Number	Percent	Number	Percent	Number	Percent	Number	Percent	Number	Percent	Number	Percent	Number	Percent
By Age														
Less than 20	0	0.0%	0	0.0%	0	0.0%	0	0.0%	0	0.0%	0	0.0%	0	0.0%
20 to 24	384	71.0%	144	51.8%	20	29.0%	9	45.0%	0	0.0%	0	0.0%	0	0.0%
25 to 29	96	17.7%	69	24.8%	17	24.6%	2	10.0%	2	20.0%	3	37.5%	15	18.8%
30 to 39	37	6.8%	35	12.6%	13	18.8%	5	25.0%	1	10.0%	1	12.5%	31	38.8%
> 39	24	4.4%	30	10.8%	19	27.5%	4	20.0%	7	70.0%	4	50.0%	34	42.5%
	541		278		69		20		10		8		80	
By Sex														
Female	364	67.3%	149	53.6%	65	94.2%	19	95.0%	8	80.0%	4	50.0%	63	78.8%
Male	177	32.7%	129	46.4%	4	5.8%	1	5.0%	2	20.0%	4	50.0%	17	21.3%
	541		278		69		20		10		8		80	
By Ethnicity														
Am. Ind./Nat. Al.	4	0.7%	1	0.4%	0	0.0%	0	0.0%	0	0.0%	0	0.0%	1	1.3%
Asian/Pac. Is.	20	3.7%	23	8.3%	4	5.8%	1	5.0%	0	0.0%	0	0.0%	0	0.0%
Black, non-Hisp.	37	6.8%	15	5.4%	9	13.0%	4	20.0%	1	10.0%	1	12.5%	1	1.3%
Hispanic	49	9.1%	18	6.5%	3	4.3%	2	10.0%	0	0.0%	0	0.0%	1	1.3%
White, non-Hisp.	431	79.7%	221	79.5%	53	76.8%	13	65.0%	9	90.0%	7	87.5%	77	96.3%
	541		278		69		20		10		8		80	
By Citizenship														
U.S. Citizen	524	96.9%	260	93.5%	69	100.0%	19	95.0%	10	100.0%	6	75.0%	80	100.0%
non-Citizen	17	3.1%	18	6.5%	0	0.0%	1	5.0%	0	0.0%	2	25.0%	0	0.0%
	541		278		69		20		10		8		80	
By Ethnicity & Citizenship														
Am. Ind./Nat. Al.	4	0.7%	1	0.4%	0	0.0%	0	0.0%	0	0.0%	0	0.0%	1	1.3%
Asian/Pac. Is.	14	2.6%	17	6.1%	4	5.8%	1	5.0%	0	0.0%	0	0.0%	0	0.0%
Black, non-Hisp.	34	6.3%	14	5.0%	9	13.0%	3	15.0%	1	10.0%	1	12.5%	1	1.3%
Hispanic	47	8.7%	18	6.5%	3	4.3%	2	10.0%	0	0.0%	0	0.0%	1	1.3%
White, non-Hisp.	425	78.6%	210	75.5%	53	76.8%	13	65.0%	9	90.0%	5	62.5%	77	96.3%
Nonresident Alien	17	3.1%	18	6.5%	0	0.0%	1	5.0%	0	0.0%	2	25.0%	0	0.0%
	541		278		69		20		10		8		80	
By Initial Admit Type														
Regular	218	40.3%	100	36.0%	16	23.2%	3	15.0%	10	100.0%	8	100.0%	80	100.0%
Special	24	4.4%	4	1.4%	0	0.0%	0	0.0%	0	0.0%	0	0.0%	0	0.0%
EOF	38	7.0%	7	2.5%	0	0.0%	0	0.0%	0	0.0%	0	0.0%	0	0.0%
Transfer	260	48.1%	163	58.6%	53	76.8%	17	85.0%	0	0.0%	0	0.0%	0	0.0%
EOF Transfer	1	0.2%	4	1.4%	0	0.0%	0	0.0%	0	0.0%	0	0.0%	0	0.0%
	541		278		69		20		10		8		80	

TOTAL 2002-03 DEGREES AWARDED = 1,006

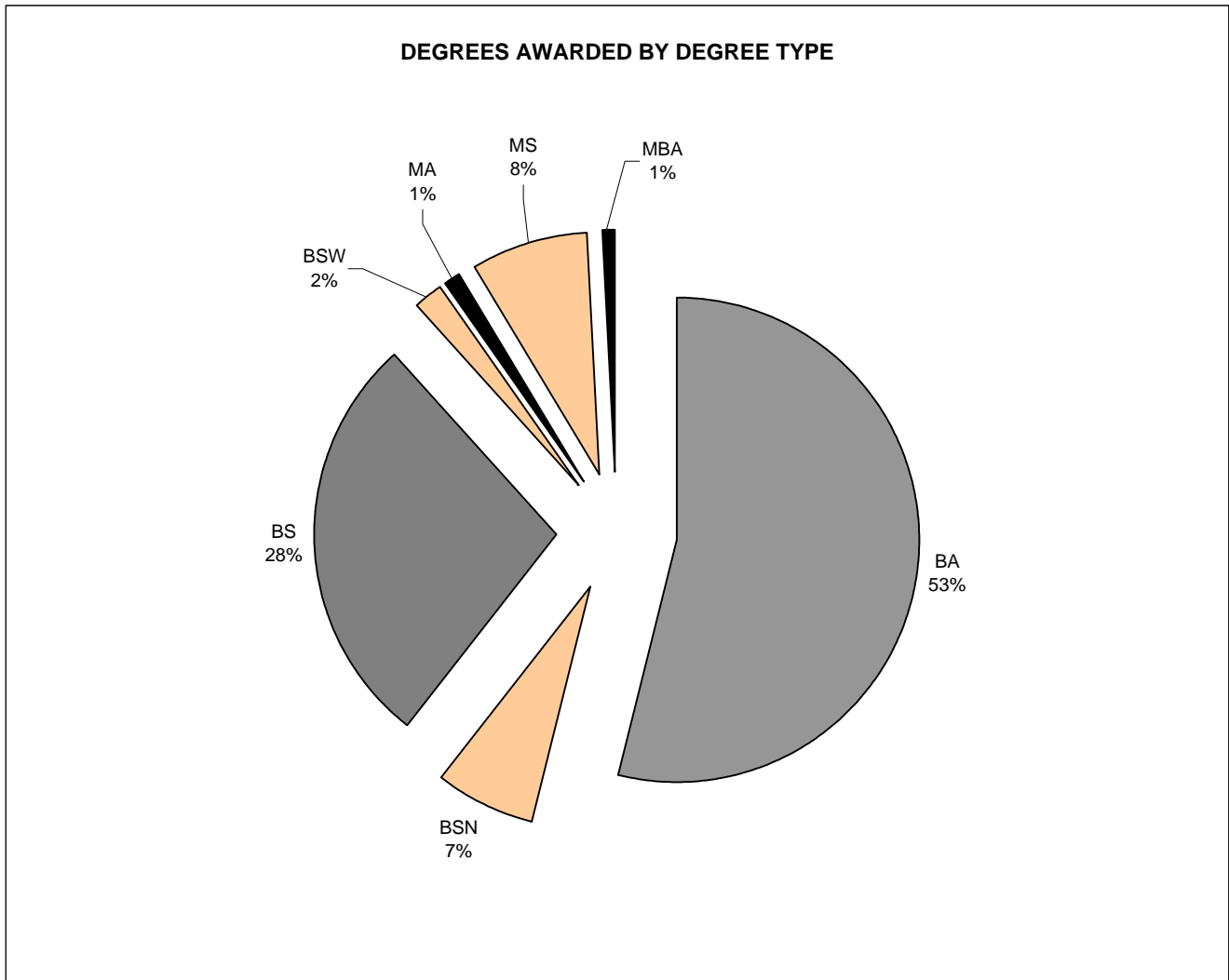
By School and Combined Graduate Programs

Administration and Business	251	25.0%
American and International Studies	109	10.8%
Contemporary Arts	204	20.3%
Social Science and Human Services	184	18.3%
Theoretical and Applied Sciences	160	15.9%
Master's Degree Programs (combined)	98	9.7%



TOTAL 2002-03 DEGREES AWARDED = 1,006

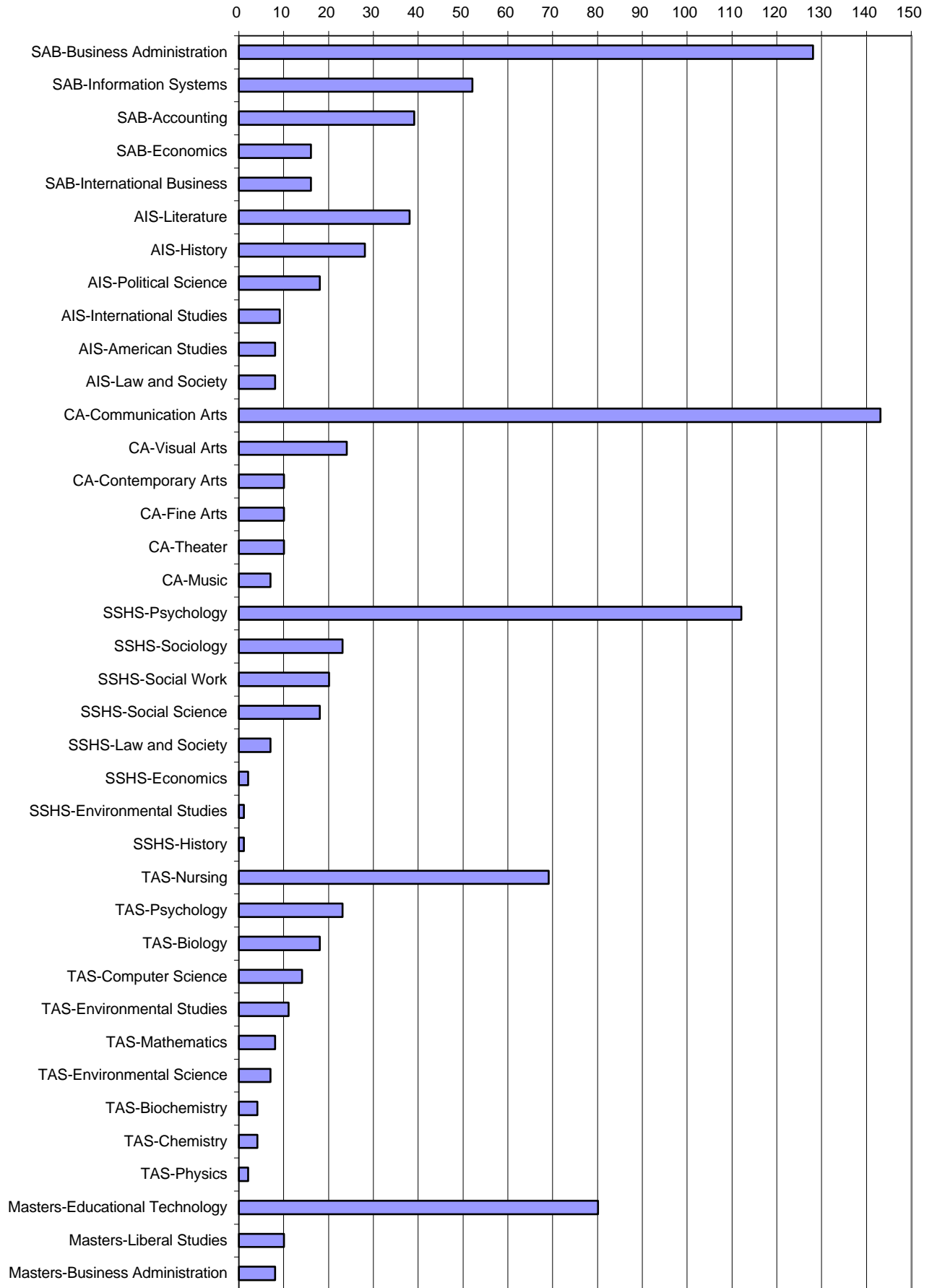
School or Program	BA		BS		BSN		BSW		MA		MBA		MS	
	No.	Pct.	No.	Pct.	No.	Pct.	No.	Pct.	No.	Pct.	No.	Pct.	No.	Pct.
Admin. & Business	32	5.9%	219	78.8%	0	0.0%	0	0.0%	0	0.0%	0	0.0%	0	0.0%
Amer. & Int'l Studies	109	20.1%	0	0.0%	0	0.0%	0	0.0%	0	0.0%	0	0.0%	0	0.0%
Contemporary Arts	204	37.7%	0	0.0%	0	0.0%	0	0.0%	0	0.0%	0	0.0%	0	0.0%
Soc. Sci. & Hum. Serv.	164	30.3%	0	0.0%	0	0.0%	20	100.0%	0	0.0%	0	0.0%	0	0.0%
Theoretical & App. Sci.	32	5.9%	59	21.2%	69	100.0%	0	0.0%	0	0.0%	0	0.0%	0	0.0%
Grad. Liberal Studies	0	0.0%	0	0.0%	0	0.0%	0	0.0%	10	100.0%	0	0.0%	0	0.0%
Grad. Busn. Admn.	0	0.0%	0	0.0%	0	0.0%	0	0.0%	0	0.0%	8	100.0%	0	0.0%
Grad. Educ. Tech.	0	0.0%	0	0.0%	0	0.0%	0	0.0%	0	0.0%	0	0.0%	80	100.0%
	541		278		69		20		10		8		80	



By School and Major (with Graduate Programs)

SAB	Accounting	39	3.9%
	Business Administration	128	12.7%
	Economics	16	1.6%
	Information Systems	52	5.2%
	International Business	16	1.6%
AIS	American Studies	8	0.8%
	History	28	2.8%
	International Studies	9	0.9%
	Law and Society	8	0.8%
	Literature	38	3.8%
	Political Science	18	1.8%
CA	Communication Arts	143	14.2%
	Contemporary Arts	10	1.0%
	Fine Arts	10	1.0%
	Music	7	0.7%
	Theater	10	1.0%
	Visual Arts	24	2.4%
SSHS	Economics	2	0.2%
	Environmental Studies	1	0.1%
	History	1	0.1%
	Law and Society	7	0.7%
	Psychology	112	11.1%
	Social Science	18	1.8%
	Social Work	20	2.0%
	Sociology	23	2.3%
TAS	Biochemistry	4	0.4%
	Biology	18	1.8%
	Chemistry	4	0.4%
	Computer Science	14	1.4%
	Environmental Science	7	0.7%
	Environmental Studies	11	1.1%
	Mathematics	8	0.8%
	Nursing	69	6.9%
	Physics	2	0.2%
	Psychology	23	2.3%
MASTERS	Liberal Studies	10	1.0%
	Business Administration	8	0.8%
	Educational Technology	80	8.0%

DEGREES AWARDED BY SCHOOL AND MAJOR/PROGRAM



TOTAL 2002-03 DEGREES AWARDED = 1,006

By Major or Graduate Program

Accounting	39	4.0%
American Studies	8	0.8%
Biochemistry	4	0.4%
Biology	18	1.9% as
Business Administration	128	13.2%
Chemistry	4	0.4%
Communication Arts	143	14.7%
Computer Science	14	1.4%
Contemporary Arts	10	1.0%
Economics [1]	18	1.9%
Environmental Science	7	0.7%
Environmental Studies [2]	12	1.2%
Fine Arts	10	1.0%
History [3]	29	3.0%
Information Systems	52	5.3%
International Business	16	1.6%
International Studies	9	0.9%
Law and Society [4]	15	1.5%
Literature	38	3.9%
Masters in Business Administration	8	0.8%
Masters in Educational Technology	80	8.2%
Masters in Liberal Studies	10	1.0%
Mathematics	8	0.8%
Music	7	0.7%
Nursing	69	7.1%
Physics	2	0.2%
Political Science	18	1.9% as
Psychology [5]	135	13.9%
Social Science	18	1.9%
Social Work	20	2.1%
Sociology	23	2.4%
Theater	10	1.0%
Visual Arts	24	2.5%

[1] Includes students from SAB and SSHS.

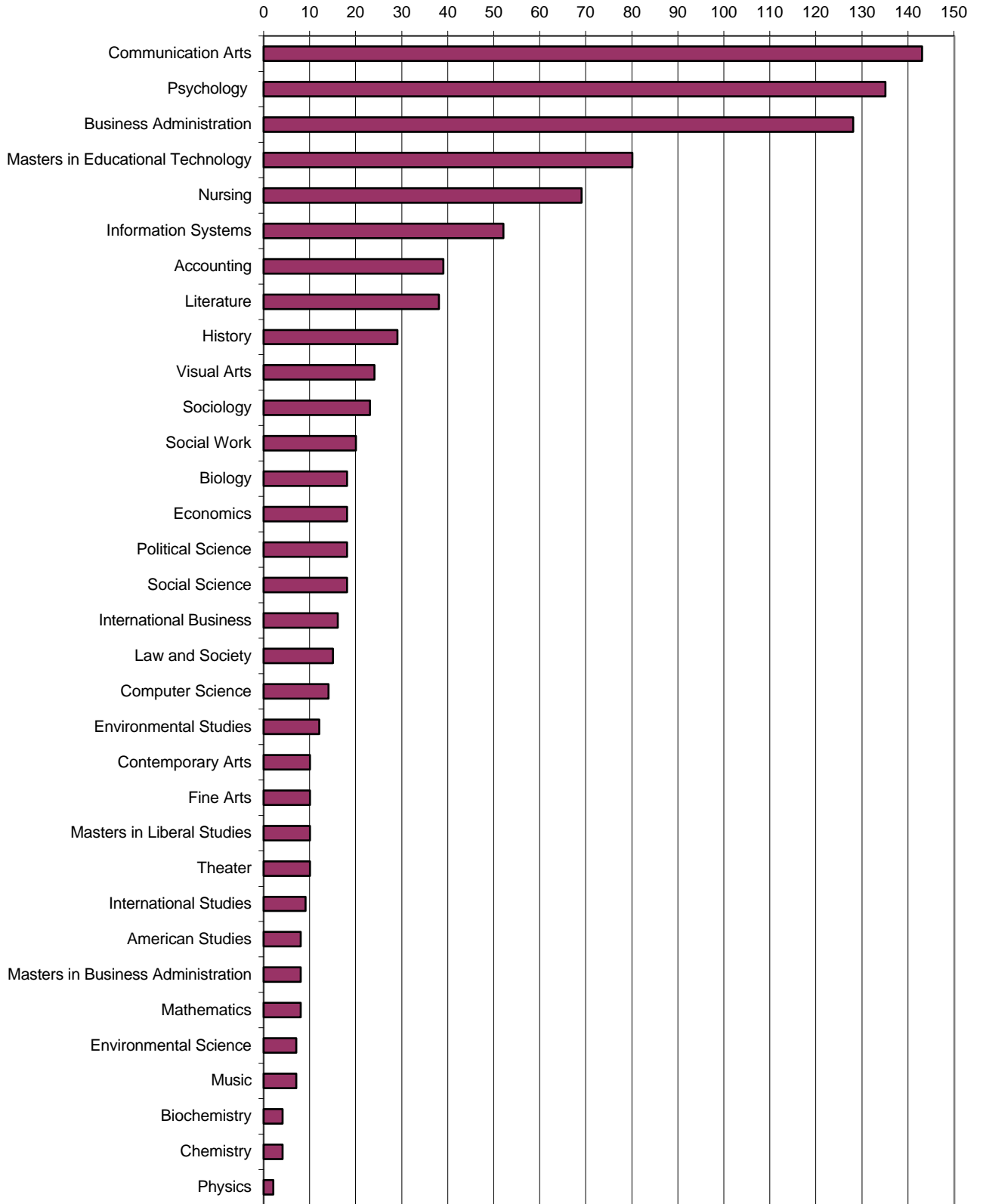
[2] Includes students from SSHS and TAS.

[3] Includes students from AIS and SSHS.

[4] Includes students from AIS and SSHS.

[5] Includes students from TAS and SSHS.

DEGREES AWARDED BY MAJOR

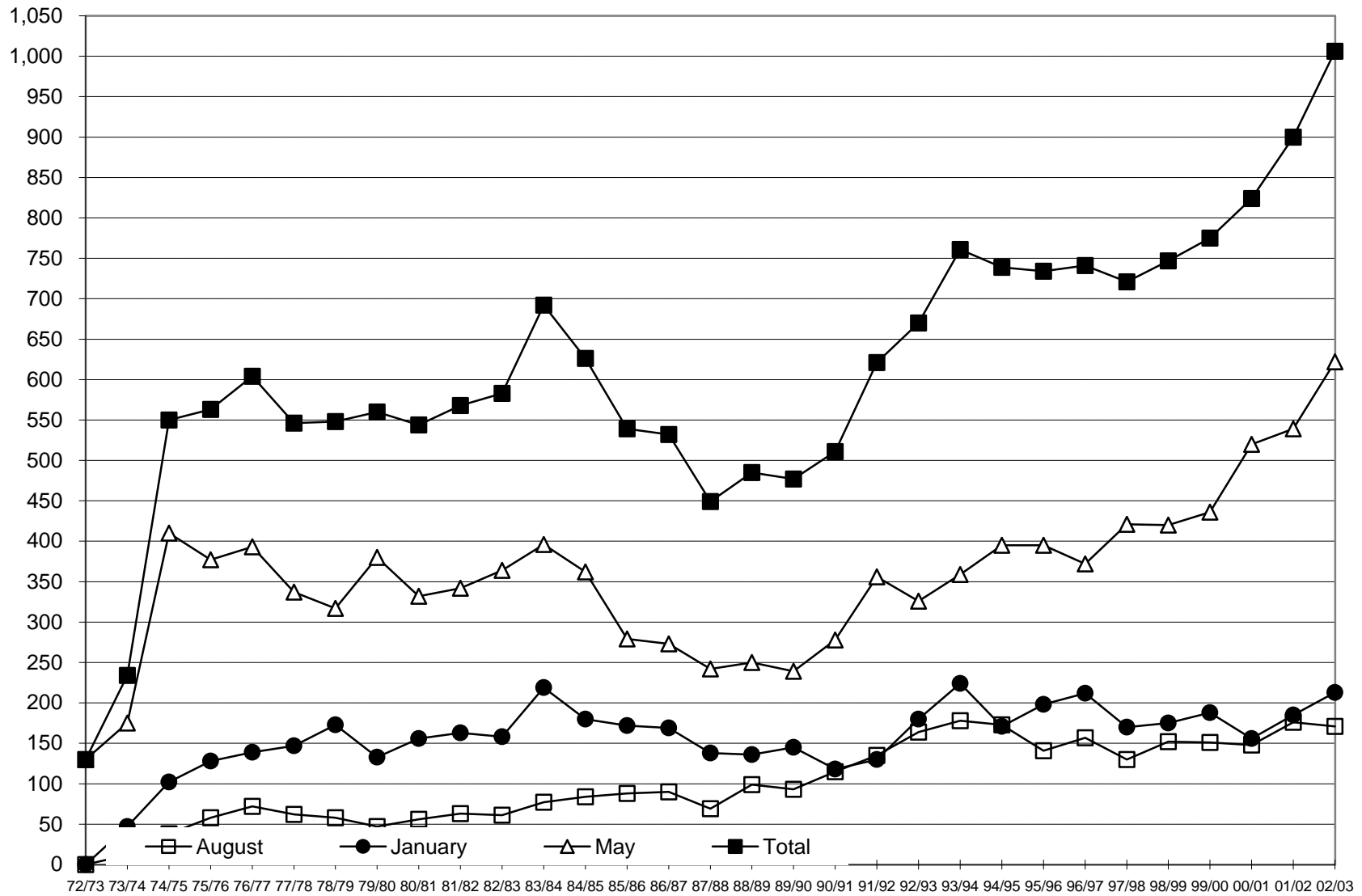


TOTAL DEGREES AWARDED, 1972 TO 2002-03*

Year	AUGUST DEGREES			JANUARY DEGREES			MAY DEGREES			TOTAL FISCAL YEAR DEGREES			CUMULATIVE DEGREES AWARDED SINCE 1972-73
	Number of Degrees Awarded	Percent Change From Previous August	Cumulative Percent Change From Aug. 1973	Number of Degrees Awarded	Percent Change From Previous January	Cumulative Percent Change From Jan. 1974	Number of Degrees Awarded	Percent Change From Previous May	Cumulative Percent Change From May 1973	Number of Degrees Awarded	Percent Change From Previous Fiscal Year	Cumulative Percent Change From 1972-73	
1972-73	N/A	N/A	N/A	N/A	N/A	N/A	130	N/A	0.0%	130	N/A	0.0%	130
1973-74	12	N/A	0.0%	47	N/A	0.0%	175	34.6%	34.6%	234	80.0%	80.0%	364
1974-75	38	216.7%	216.7%	102	117.0%	117.0%	410	134.3%	215.4%	550	135.0%	323.1%	914
1975-76	58	52.6%	383.3%	128	25.5%	172.3%	377	-8.0%	190.0%	563	2.4%	333.1%	1,477
1976-77	72	24.1%	500.0%	139	8.6%	195.7%	393	4.2%	202.3%	604	7.3%	364.6%	2,081
1977-78	62	-13.9%	416.7%	147	5.8%	212.8%	337	-14.2%	159.2%	546	-9.6%	320.0%	2,627
1978-79	58	-6.5%	383.3%	173	17.7%	268.1%	317	-5.9%	143.8%	548	0.4%	321.5%	3,175
1979-80	47	-19.0%	291.7%	133	-23.1%	183.0%	380	19.9%	192.3%	560	2.2%	330.8%	3,735
1980-81	56	19.1%	366.7%	156	17.3%	231.9%	332	-12.6%	155.4%	544	-2.9%	318.5%	4,279
1981-82	63	12.5%	425.0%	163	4.5%	246.8%	342	3.0%	163.1%	568	4.4%	336.9%	4,847
1982-83	61	-3.2%	408.3%	158	-3.1%	236.2%	364	6.4%	180.0%	583	2.6%	348.5%	5,430
1983-84	77	26.2%	541.7%	219	38.6%	366.0%	396	8.8%	204.6%	692	18.7%	432.3%	6,122
1984-85	84	9.1%	600.0%	180	-17.8%	283.0%	362	-8.6%	178.5%	626	-9.5%	381.5%	6,748
1985-86	88	4.8%	633.3%	172	-4.4%	266.0%	279	-22.9%	114.6%	539	-13.9%	314.6%	7,287
1986-87	90	2.3%	650.0%	169	-1.7%	259.6%	273	-2.2%	110.0%	532	-1.3%	309.2%	7,819
1987-88	69	-23.3%	475.0%	138	-18.3%	193.6%	242	-11.4%	86.2%	449	-15.6%	245.4%	8,268
1988-89	99	43.5%	725.0%	136	-1.4%	189.4%	250	3.3%	92.3%	485	8.0%	273.1%	8,753
1989-90	93	-6.1%	675.0%	145	6.6%	208.5%	239	-4.4%	83.8%	477	-1.6%	266.9%	9,230
1990-91	115	23.7%	858.3%	118	-18.6%	151.1%	278	16.3%	113.8%	511	7.1%	293.1%	9,741
1991-92	135	17.4%	1025.0%	130	10.2%	176.6%	356	28.1%	173.8%	621	21.5%	377.7%	10,362
1992-93	164	21.5%	1266.7%	180	38.5%	283.0%	326	-8.4%	150.8%	670	7.9%	415.4%	11,032
1993-94	178	8.5%	1383.3%	224	24.4%	376.6%	359	10.1%	176.2%	761	13.6%	485.4%	11,793
1994-95	173	-2.8%	1341.7%	171	-23.7%	263.8%	395	10.0%	203.8%	739	-2.9%	468.5%	12,532
1995-96	141	-18.5%	1075.0%	198	15.8%	321.3%	395	0.0%	203.8%	734	-0.7%	464.6%	13,266
1996-97	157	11.3%	1208.3%	212	7.1%	351.1%	372	-5.8%	186.2%	741	1.0%	470.0%	14,007
1997-98	130	-17.2%	983.3%	170	-19.8%	261.7%	421	13.2%	223.8%	721	-2.7%	454.6%	14,728
1998-99	152	16.9%	1166.7%	175	2.9%	272.3%	420	-0.2%	223.1%	747	3.6%	474.6%	15,475
1999-00	151	-0.7%	1158.3%	188	7.4%	300.0%	436	3.8%	235.4%	775	3.7%	496.2%	16,250
2000-01	148	-2.0%	1133.3%	156	-17.0%	231.9%	520	19.3%	300.0%	824	6.3%	533.8%	17,074
2001-02	176	18.9%	1366.7%	185	18.6%	293.6%	539	3.7%	314.6%	900	9.2%	592.3%	17,974
2002-03	171	-2.8%	1325.0%	213	15.1%	353.2%	622	15.4%	378.5%	1,006	11.8%	673.8%	18,980

* Degrees are reported on a fiscal year basis. For example, 2002-03 graduates include degree recipients from August 2002, January 2003, and May 2003.

DEGREES AWARDED BY FISCAL YEAR, 1972-73 TO 2002-03



DEGREES AWARDED BY AGE, 1998-99 TO 2002-03

	1998-99		1999-00		2000-01		2001-02		2002-03		Pct. Change 98/99 to 02/03	Pct. Change 01/02 to 02/03
	No.	Pct.	No.	Pct.	No.	Pct.	No.	Pct.	No.	Pct.		
Bachelor's												
Less Than 20	0	0.0%	0	0.0%	1	0.1%	0	0.0%	0	0.0%	N/A	N/A
20 to 24	318	44.7%	356	48.6%	422	54.8%	492	59.1%	557	61.3%	75.2%	13.2%
25 to 29	197	27.7%	189	25.8%	180	23.4%	169	20.3%	184	20.3%	-6.6%	8.9%
30 to 39	121	17.0%	115	15.7%	96	12.5%	91	10.9%	90	9.9%	-25.6%	-1.1%
40 and Over	76	10.7%	72	9.8%	71	9.2%	81	9.7%	77	8.5%	1.3%	-4.9%
Total	712		732		770		833		908		27.5%	9.0%

	1998-99		1999-00		2000-01		2001-02		2002-03		Pct. Change 98/99 to 02/03	Pct. Change 01/02 to 02/03
	No.	Pct.	No.	Pct.	No.	Pct.	No.	Pct.	No.	Pct.		
Master's												
Less Than 20	0	0.0%	0	0.0%	0	0.0%	0	0.0%	0	0.0%	N/A	N/A
20 to 24	0	0.0%	0	0.0%	0	0.0%	1	1.5%	0	0.0%	N/A	N/A
25 to 29	6	17.1%	3	7.0%	12	22.2%	19	28.4%	20	20.4%	N/A	5.3%
30 to 39	9	25.7%	11	25.6%	21	38.9%	27	40.3%	33	33.7%	N/A	22.2%
40 and Over	20	57.1%	29	67.4%	21	38.9%	20	29.9%	45	45.9%	125.0%	125.0%
Total	35		43		54		67		98		180.0%	46.3%

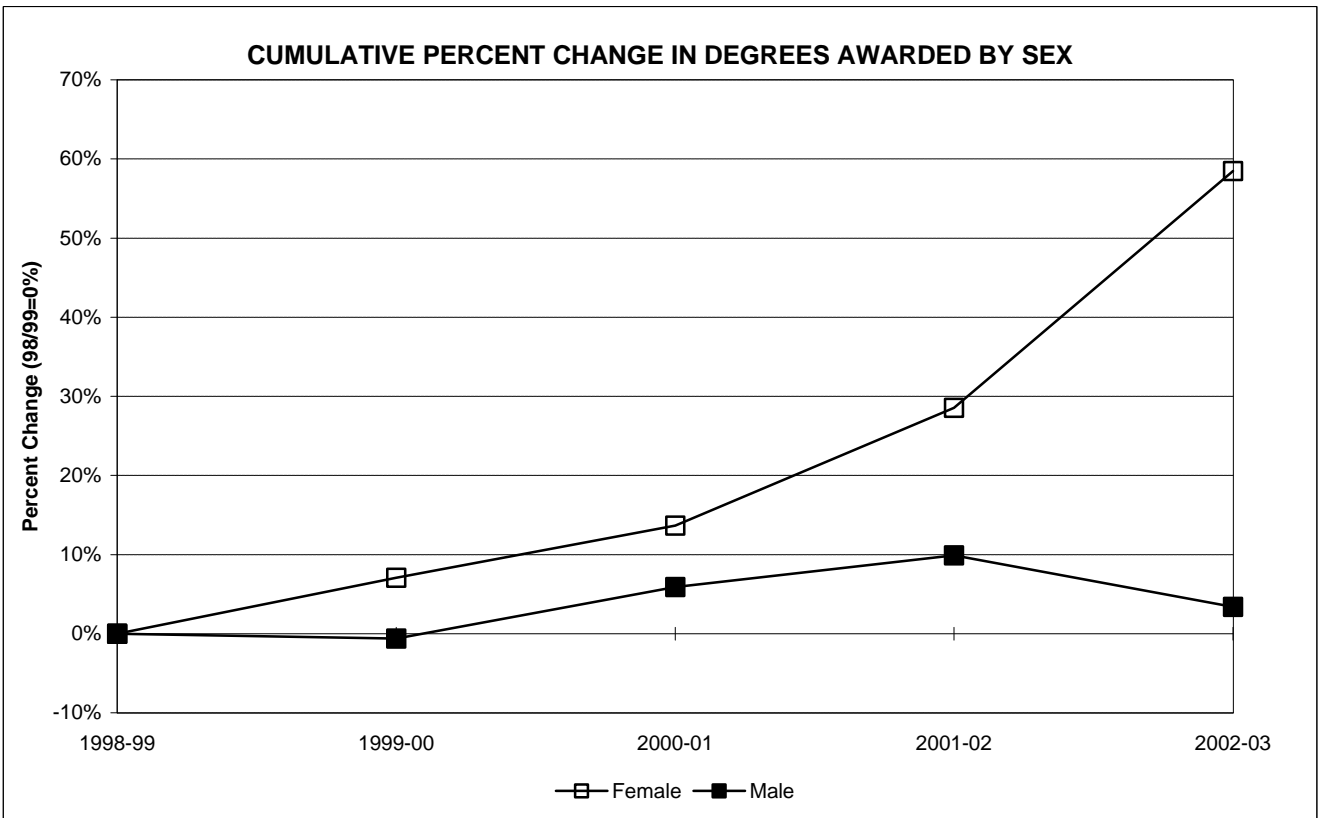
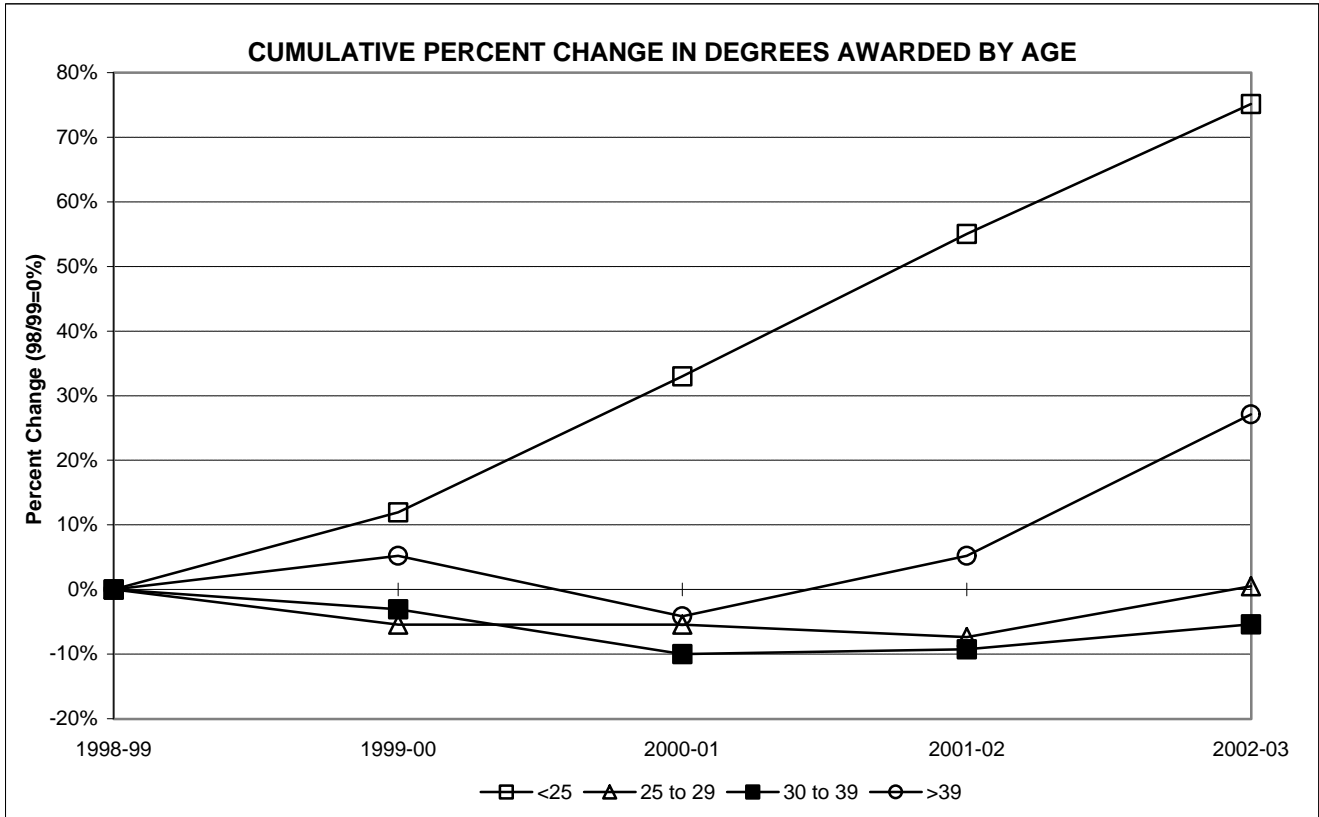
Total	1998-99		1999-00		2000-01		2001-02		2002-03		Pct. Change 98/99 to 02/03	Pct. Change 01/02 to 02/03
	No.	Pct.	No.	Pct.	No.	Pct.	No.	Pct.	No.	Pct.		
Less Than 20	0	0.0%	0	0.0%	1	0.1%	0	0.0%	0	0.0%	N/A	N/A
20 to 24	318	42.6%	356	45.9%	422	51.2%	493	54.8%	557	55.4%	75.2%	13.0%
25 to 29	203	27.2%	192	24.8%	192	23.3%	188	20.9%	204	20.3%	0.5%	8.5%
30 to 39	130	17.4%	126	16.3%	117	14.2%	118	13.1%	123	12.2%	-5.4%	4.2%
40 and Over	96	12.9%	101	13.0%	92	11.2%	101	11.2%	122	12.1%	27.1%	20.8%
Total	747		775		824		900		1,006		34.7%	11.8%

DEGREES AWARDED BY SEX, 1998-99 TO 2002-03

	1998-99		1999-00		2000-01		2001-02		2002-03		Pct. Change 98/99 to 02/03	Pct. Change 01/02 to 02/03
	No.	Pct.	No.	Pct.	No.	Pct.	No.	Pct.	No.	Pct.		
Bachelor's												
Female	401	56.3%	419	57.2%	442	57.4%	502	60.3%	597	65.7%	48.9%	18.9%
Male	311	43.7%	313	42.8%	328	42.6%	331	39.7%	311	34.3%	0.0%	-6.0%
Total	712		732		770		833		908		27.5%	9.0%

	1998-99		1999-00		2000-01		2001-02		2002-03		Pct. Change 98/99 to 02/03	Pct. Change 01/02 to 02/03
	No.	Pct.	No.	Pct.	No.	Pct.	No.	Pct.	No.	Pct.		
Master's												
Female	23	65.7%	35	81.4%	40	74.1%	43	64.2%	75	76.5%	226.1%	74.4%
Male	12	34.3%	8	18.6%	14	25.9%	24	35.8%	23	23.5%	N/A	-4.2%
Total	35		43		54		67		98		180.0%	46.3%

Total	1998-99		1999-00		2000-01		2001-02		2002-03		Pct. Change 98/99 to 02/03	Pct. Change 01/02 to 02/03
	No.	Pct.	No.	Pct.	No.	Pct.	No.	Pct.	No.	Pct.		
Female	424	56.8%	454	58.6%	482	58.5%	545	60.6%	672	66.8%	58.5%	23.3%
Male	323	43.2%	321	41.4%	342	41.5%	355	39.4%	334	33.2%	3.4%	-5.9%
Total	747		775		824		900		1,006		34.7%	11.8%



DEGREES AWARDED BY ETHNICITY, 1998-99 TO 2002-03

Bachelor's	1998-99		1999-00		2000-01		2001-02		2002-03		Pct. Change 98/99 to 02/03	Pct. Change 01/02 to 02/03
	No.	Pct.	No.	Pct.	No.	Pct.	No.	Pct.	No.	Pct.		
American Indian/Nat. Al.	0	0.0%	2	0.3%	0	0.0%	1	0.1%	5	0.6%	N/A	400.0%
Asian/Pacific Islander	51	7.2%	50	6.8%	53	6.9%	56	6.7%	48	5.3%	-5.9%	-14.3%
Black, non-Hispanic	53	7.4%	55	7.5%	72	9.4%	60	7.2%	65	7.2%	22.6%	8.3%
Hispanic	37	5.2%	37	5.1%	50	6.5%	62	7.4%	72	7.9%	94.6%	16.1%
White, non-Hispanic	571	80.2%	588	80.3%	595	77.3%	654	78.5%	718	79.1%	25.7%	9.8%
Total	712		732		770		833		908		27.5%	9.0%

Master's	1998-99		1999-00		2000-01		2001-02		2002-03		Pct. Change 98/99 to 02/03	Pct. Change 01/02 to 02/03
	No.	Pct.	No.	Pct.	No.	Pct.	No.	Pct.	No.	Pct.		
American Indian/Nat. Al.	0	0.0%	0	0.0%	0	0.0%	1	1.5%	1	1.0%	N/A	0.0%
Asian/Pacific Islander	2	5.7%	2	4.7%	2	3.7%	1	1.5%	0	0.0%	-100.0%	-100.0%
Black, non-Hispanic	3	8.6%	2	4.7%	3	5.6%	13	19.4%	3	3.1%	N/A	-76.9%
Hispanic	0	0.0%	0	0.0%	0	0.0%	1	1.5%	1	1.0%	N/A	0.0%
White, non-Hispanic	30	85.7%	39	90.7%	49	90.7%	51	76.1%	93	94.9%	210.0%	82.4%
Total	35		43		54		67		98		180.0%	46.3%

Total	1998-99		1999-00		2000-01		2001-02		2002-03		Pct. Change 98/99 to 02/03	Pct. Change 01/02 to 02/03
	No.	Pct.	No.	Pct.	No.	Pct.	No.	Pct.	No.	Pct.		
American Indian/Nat. Al.	0	0.0%	2	0.3%	0	0.0%	2	0.2%	6	0.6%	N/A	200.0%
Asian/Pacific Islander	53	7.1%	52	6.7%	55	6.7%	57	6.3%	48	4.8%	-9.4%	-15.8%
Black, non-Hispanic	56	7.5%	57	7.4%	75	9.1%	73	8.1%	68	6.8%	21.4%	-6.8%
Hispanic	37	5.0%	37	4.8%	50	6.1%	63	7.0%	73	7.3%	97.3%	15.9%
White, non-Hispanic	601	80.5%	627	80.9%	644	78.2%	705	78.3%	811	80.6%	34.9%	15.0%
Total	747		775		824		900		1,006		34.7%	11.8%



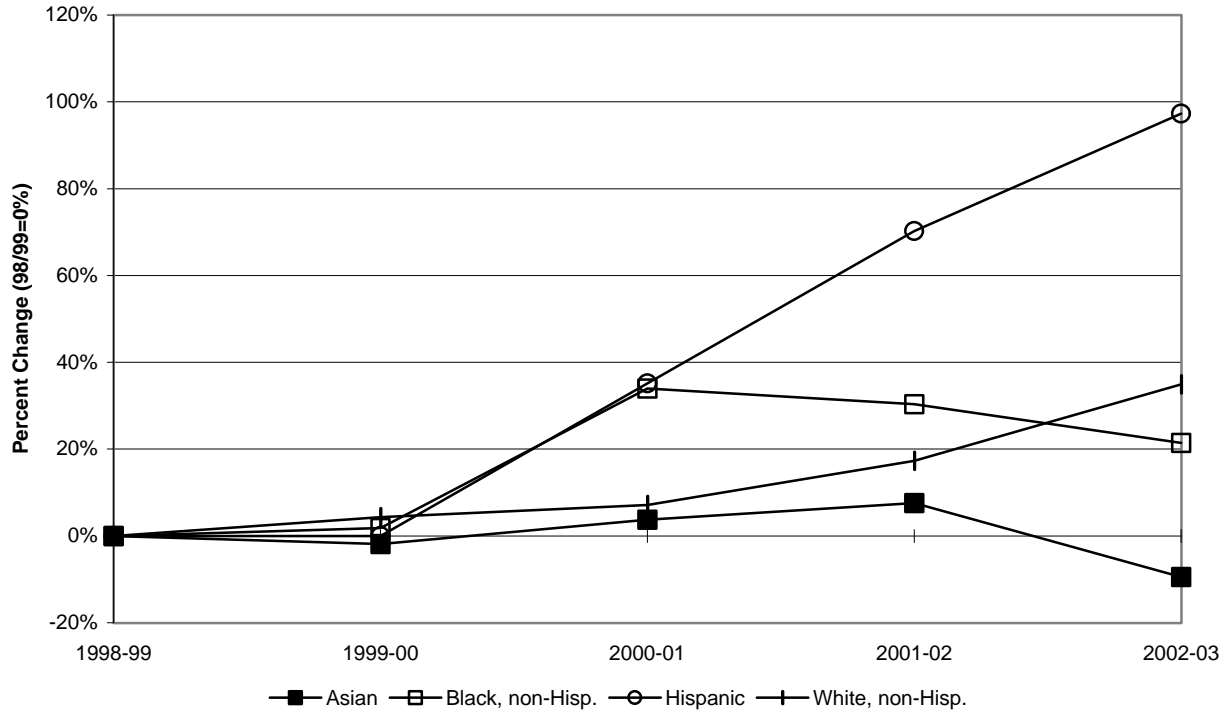
DEGREES AWARDED BY INITIAL ADMISSIONS TYPE, 1998-99 TO 2002-03

Bachelor's	1998-99		1999-00		2000-01		2001-02		2002-03		Pct. Change 98/99 to 02/03	Pct. Change 01/02 to 02/03
	No.	Pct.	No.	Pct.	No.	Pct.	No.	Pct.	No.	Pct.		
Regular	209	29.4%	254	34.7%	290	37.7%	326	39.1%	337	37.1%	61.2%	3.4%
EOF non-Transfer	25	3.5%	28	3.8%	46	6.0%	49	5.9%	45	5.0%	80.0%	-8.2%
EOF Transfer	2	0.3%	7	1.0%	11	1.4%	8	1.0%	5	0.6%	150.0%	-37.5%
Special	26	3.7%	19	2.6%	28	3.6%	29	3.5%	28	3.1%	7.7%	-3.4%
Transfer	450	63.2%	424	57.9%	395	51.3%	421	50.5%	493	54.3%	9.6%	17.1%
Total	712		732		770		833		908		27.5%	9.0%

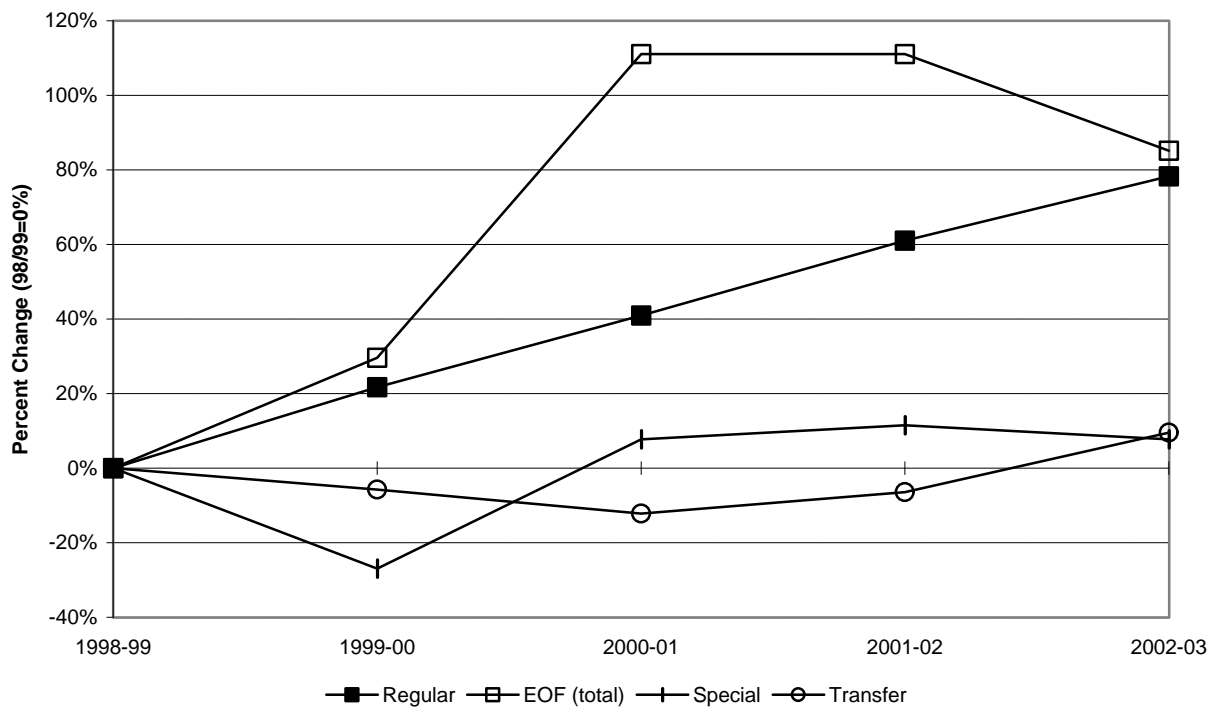
Master's	1998-99		1999-00		2000-01		2001-02		2002-03		Pct. Change 98/99 to 02/03	Pct. Change 01/02 to 02/03
	No.	Pct.	No.	Pct.	No.	Pct.	No.	Pct.	No.	Pct.		
Regular	35	100.0%	43	100.0%	54	100.0%	67	100.0%	98	100.0%	180.0%	46.3%
EOF non-Transfer	0	0.0%	0	0.0%	0	0.0%	0	0.0%	0	0.0%	N/A	N/A
EOF Transfer	0	0.0%	0	0.0%	0	0.0%	0	0.0%	0	0.0%	N/A	N/A
Special	0	0.0%	0	0.0%	0	0.0%	0	0.0%	0	0.0%	N/A	N/A
Transfer	0	0.0%	0	0.0%	0	0.0%	0	0.0%	0	0.0%	N/A	N/A
Total	35		43		54		67		98		180.0%	46.3%

Total	1998-99		1999-00		2000-01		2001-02		2002-03		Pct. Change 98/99 to 02/03	Pct. Change 01/02 to 02/03
	No.	Pct.	No.	Pct.	No.	Pct.	No.	Pct.	No.	Pct.		
Regular	244	32.7%	297	38.3%	344	41.7%	393	43.7%	435	43.2%	78.3%	10.7%
EOF non-Transfer	25	3.3%	28	3.6%	46	5.6%	49	5.4%	45	4.5%	80.0%	-8.2%
EOF Transfer	2	0.3%	7	0.9%	11	1.3%	8	0.9%	5	0.5%	N/A	-37.5%
Special	26	3.5%	19	2.5%	28	3.4%	29	3.2%	28	2.8%	7.7%	-3.4%
Transfer	450	60.2%	424	54.7%	395	47.9%	421	46.8%	493	49.0%	9.6%	17.1%
Total	747		775		824		900		1,006		34.7%	11.8%

CUMULATIVE PERCENT CHANGE IN DEGREES AWARDED BY ETHNICITY



CUMULATIVE PCT. CHANGE IN DEGREES AWARDED BY INITIAL ADMIT TYPE



DEGREES AWARDED BY ETHNICITY AND CITIZENSHIP, 1998-99 TO 2002-03

Bachelor's	1998-99		1999-00		2000-01		2001-02		2002-03		Pct. Change 98/99 to 02/03	Pct. Change 01/02 to 02/03
	No.	Pct.	No.	Pct.	No.	Pct.	No.	Pct.	No.	Pct.		
American Indian/Nat. Al.	0	0.0%	2	0.3%	0	0.0%	1	0.1%	5	0.6%	N/A	400.0%
Asian/Pacific Islander	30	4.2%	30	4.1%	31	4.0%	37	4.4%	36	4.0%	20.0%	-2.7%
Black, non-Hispanic	49	6.9%	50	6.8%	64	8.3%	56	6.7%	60	6.6%	22.4%	7.1%
Hispanic	36	5.1%	36	4.9%	50	6.5%	60	7.2%	70	7.7%	94.4%	16.7%
White, non-Hispanic	552	77.5%	570	77.9%	582	75.6%	640	76.8%	701	77.2%	27.0%	9.5%
Nonresident Alien	45	6.3%	44	6.0%	43	5.6%	39	4.7%	36	4.0%	-20.0%	-7.7%
Total	712		732		770		833		908		27.5%	9.0%

Master's	1998-99		1999-00		2000-01		2001-02		2002-03		Pct. Change 98/99 to 02/03	Pct. Change 01/02 to 02/03
	No.	Pct.	No.	Pct.	No.	Pct.	No.	Pct.	No.	Pct.		
American Indian/Nat. Al.	0	0.0%	0	0.0%	0	0.0%	1	1.5%	1	1.0%	N/A	0.0%
Asian/Pacific Islander	1	2.9%	2	4.7%	2	3.7%	0	0.0%	0	0.0%	-100.0%	N/A
Black, non-Hispanic	3	8.6%	2	4.7%	3	5.6%	12	17.9%	3	3.1%	0.0%	-75.0%
Hispanic	0	0.0%	0	0.0%	0	0.0%	1	1.5%	1	1.0%	N/A	0.0%
White, non-Hispanic	30	85.7%	39	90.7%	47	87.0%	51	76.1%	91	92.9%	203.3%	78.4%
Nonresident Alien	1	2.9%	0	0.0%	2	3.7%	2	3.0%	2	2.0%	100.0%	0.0%
Total	35		43		54		67		98		180.0%	46.3%

Total	1998-99		1999-00		2000-01		2001-02		2002-03		Pct. Change 98/99 to 02/03	Pct. Change 01/02 to 02/03
	No.	Pct.	No.	Pct.	No.	Pct.	No.	Pct.	No.	Pct.		
American Indian/Nat. Al.	0	0.0%	2	0.3%	0	0.0%	2	0.2%	6	0.6%	N/A	200.0%
Asian/Pacific Islander	31	4.1%	32	4.1%	33	4.0%	37	4.1%	36	3.6%	16.1%	-2.7%
Black, non-Hispanic	52	7.0%	52	6.7%	67	8.1%	68	7.6%	63	6.3%	21.2%	-7.4%
Hispanic	36	4.8%	36	4.6%	50	6.1%	61	6.8%	71	7.1%	97.2%	16.4%
White, non-Hispanic	582	77.9%	609	78.6%	629	76.3%	691	76.8%	792	78.7%	36.1%	14.6%
Nonresident Alien	46	6.2%	44	5.7%	45	5.5%	41	4.6%	38	3.8%	-17.4%	-7.3%
Total	747		775		824		900		1,006		34.7%	11.8%



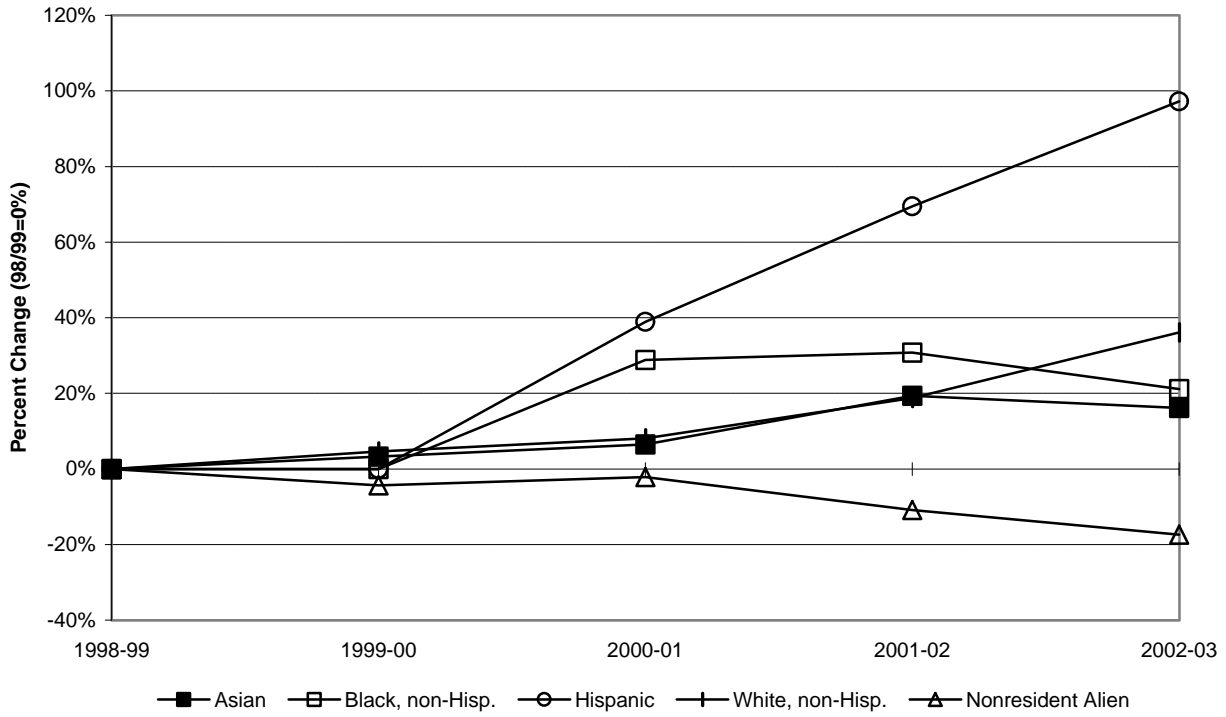
DEGREES AWARDED BY CITIZENSHIP, 1998-99 TO 2002-03

Bachelor's	1998-99		1999-00		2000-01		2001-02		2002-03		Pct. Change 98/99 to 02/03	Pct. Change 01/02 to 02/03
	No.	Pct.	No.	Pct.	No.	Pct.	No.	Pct.	No.	Pct.		
Citizen/Permanent Res.	667	93.7%	688	94.0%	727	94.4%	794	95.3%	872	96.0%	30.7%	9.8%
non-Citizen/non-Res.	45	6.3%	44	6.0%	43	5.6%	39	4.7%	36	4.0%	-20.0%	-7.7%
Total	712		732		770		833		908		27.5%	9.0%

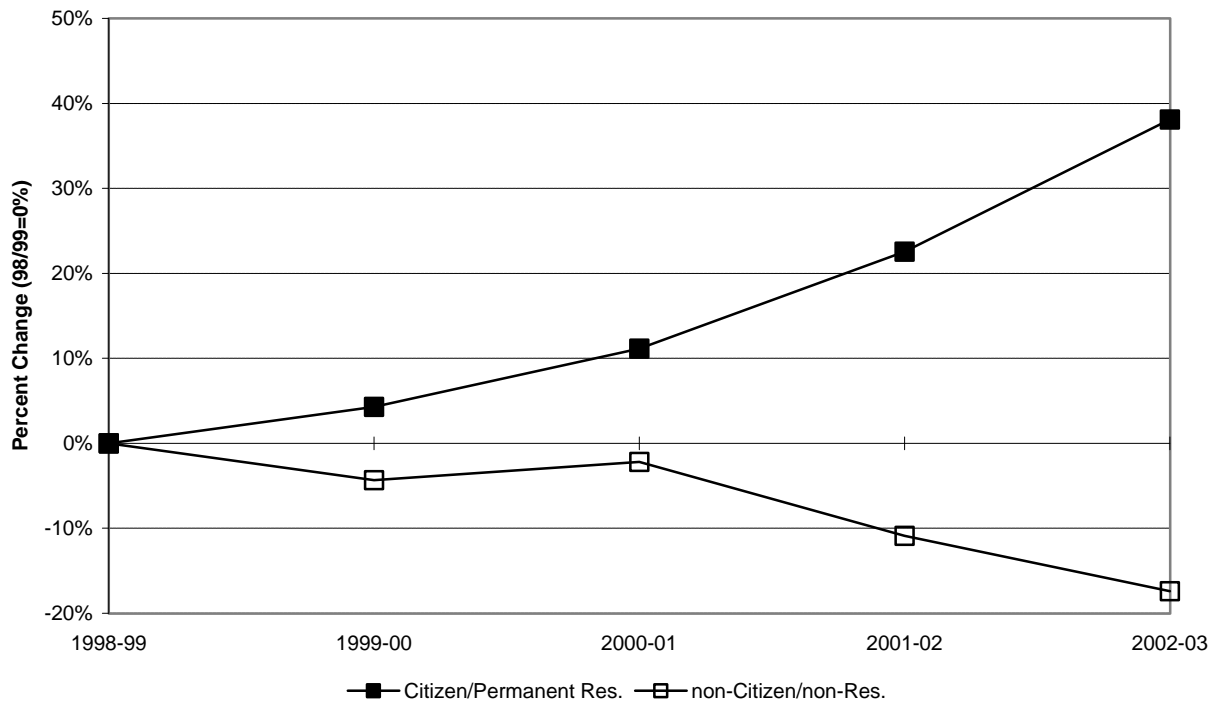
Master's	1998-99		1999-00		2001-02		2001-02		2002-03		Pct. Change 98/99 to 02/03	Pct. Change 01/02 to 02/03
	No.	Pct.	No.	Pct.	No.	Pct.	No.	Pct.	No.	Pct.		
Citizen/Permanent Res.	34	97.1%	43	100.0%	52	96.3%	65	97.0%	96	98.0%	182.4%	47.7%
non-Citizen/non-Res.	1	2.9%	0	0.0%	2	3.7%	2	3.0%	2	2.0%	100.0%	0.0%
Total	35		43		54		67		98		180.0%	46.3%

Total	1998-99		1999-00		2001-02		2001-02		2002-03		Pct. Change 98/99 to 02/03	Pct. Change 01/02 to 02/03
	No.	Pct.	No.	Pct.	No.	Pct.	No.	Pct.	No.	Pct.		
Citizen/Permanent Res.	701	93.8%	731	94.3%	779	94.5%	859	95.4%	968	96.2%	38.1%	12.7%
non-Citizen/non-Res.	46	6.2%	44	5.7%	45	5.5%	41	4.6%	38	3.8%	-17.4%	-7.3%
Total	747		775		824		900		1,006		34.7%	11.8%

CUM. PCT. CHANGE IN DEGREES AWARDED BY ETHNICITY & CITIZENSHIP

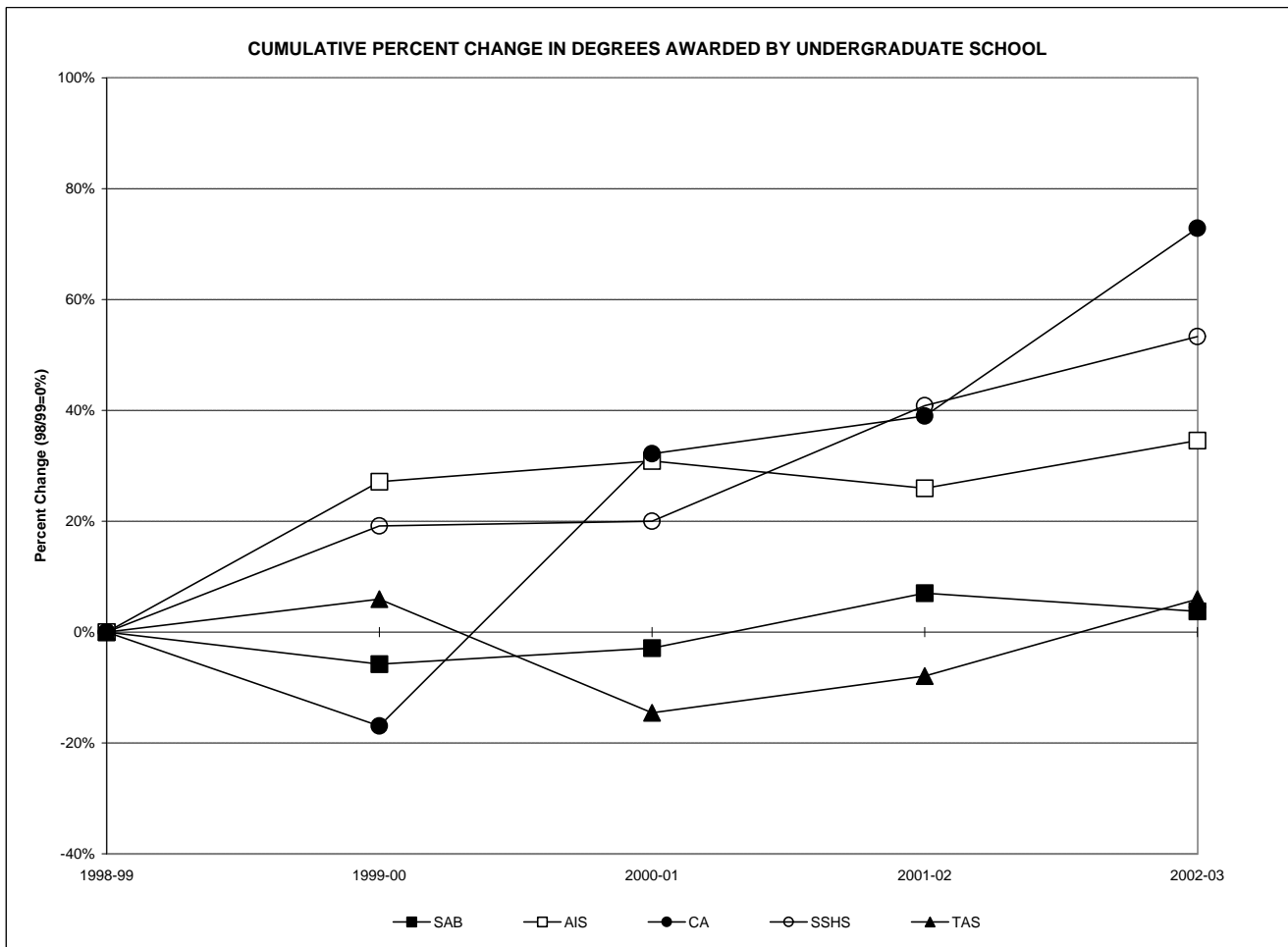


CUMULATIVE PERCENT CHANGE IN DEGREES AWARDED BY CITIZENSHIP



DEGREES AWARDED BY UNDERGRADUATE SCHOOL AND COMBINED GRADUATE PROGRAMS, 1998-99 TO 2002-03

Schools	1998-99		1999-00		2000-01		2001-02		2002-03		Percent Chg. 98/99 to 02/03	Percent Chg. 01/02 to 02/03
	No.	Pct.	No.	Pct.	No.	Pct.	No.	Pct.	No.	Pct.		
Admin. & Business	242	32.4%	228	29.4%	235	28.5%	259	28.8%	251	25.0%	3.7%	-3.1%
Amer. & Int'l Studies	81	10.8%	103	13.3%	106	12.9%	102	11.3%	109	10.8%	34.6%	6.9%
Contemporary Arts	118	15.8%	98	12.6%	156	18.9%	164	18.2%	204	20.3%	72.9%	24.4%
Soc. Sci. & Hum. Serv.	120	16.1%	143	18.5%	144	17.5%	169	18.8%	184	18.3%	53.3%	8.9%
Theoretical & App. Sci.	151	20.2%	160	20.6%	129	15.7%	139	15.4%	160	15.9%	6.0%	15.1%
Graduate Programs	35	4.7%	43	5.5%	54	6.6%	67	7.4%	98	9.7%	180.0%	46.3%
Total	747		775		824		900		1,006		34.7%	11.8%



DEGREES AWARDED BY SCHOOL AND MAJOR (WITH GRADUATE PROGRAMS), 1998-99 TO 2002-03

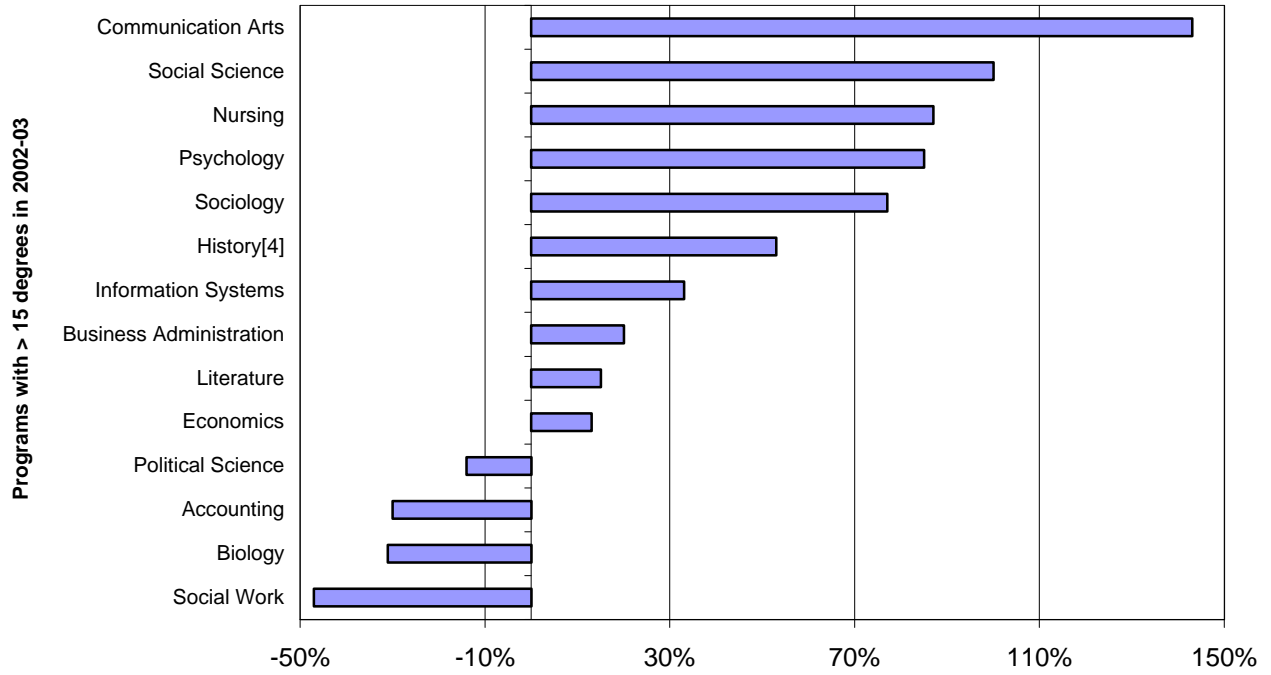
Majors/Programs	1998-99		1999-00		2000-01		2001-02		2002-03		Percent Chg. 98/99 to 02/03	Percent Chg. 01/02 to 02/03
	No.	Pct.	No.	Pct.	No.	Pct.	No.	Pct.	No.	Pct.		
Accounting	56	7.5%	40	5.2%	21	2.5%	31	3.4%	39	3.9%	-30.4%	25.8%
Business Administration	107	14.3%	124	16.0%	119	14.4%	126	14.0%	128	12.7%	19.6%	1.6%
Economics	14	1.9%	11	1.4%	14	1.7%	8	0.9%	16	1.6%	14.3%	100.0%
Information Systems	39	5.2%	36	4.6%	58	7.0%	71	7.9%	52	5.2%	33.3%	-26.8%
International Business	26	3.5%	17	2.2%	23	2.8%	23	2.6%	16	1.6%	-38.5%	-30.4%
<i>Sub-Total: SAB</i>	<i>242</i>	<i>32.4%</i>	<i>228</i>	<i>29.4%</i>	<i>235</i>	<i>28.5%</i>	<i>259</i>	<i>28.8%</i>	<i>251</i>	<i>25.0%</i>	<i>3.7%</i>	<i>-3.1%</i>
American Studies	2	0.3%	4	0.5%	3	0.4%	6	0.7%	8	0.8%	300.0%	33.3%
American/Int'l Studies	0	0.0%	1	0.1%	1	0.1%	0	0.0%	0	0.0%	N/A	N/A
History	18	2.4%	18	2.3%	17	2.1%	14	1.6%	28	2.8%	55.6%	100.0%
International Studies	6	0.8%	10	1.3%	7	0.8%	8	0.9%	9	0.9%	50.0%	12.5%
Law and Society	3	0.4%	9	1.2%	10	1.2%	15	1.7%	8	0.8%	166.7%	-46.7%
Literature	33	4.4%	48	6.2%	53	6.4%	45	5.0%	38	3.8%	15.2%	-15.6%
Political Science	19	2.5%	13	1.7%	15	1.8%	14	1.6%	18	1.8%	-5.3%	28.6%
<i>Sub-Total: AIS</i>	<i>81</i>	<i>10.8%</i>	<i>103</i>	<i>13.3%</i>	<i>106</i>	<i>12.9%</i>	<i>102</i>	<i>11.3%</i>	<i>109</i>	<i>10.8%</i>	<i>34.6%</i>	<i>6.9%</i>
Communication Arts	78	10.4%	62	8.0%	101	12.3%	118	13.1%	143	14.2%	83.3%	21.2%
Contemporary Arts	13	1.7%	9	1.2%	20	2.4%	9	1.0%	10	1.0%	-23.1%	11.1%
Fine Arts	27	3.6%	27	3.5%	35	4.2%	37	4.1%	10	1.0%	-63.0%	-73.0%
Music	--	--	--	--	--	--	--	--	7	0.7%	N/A	N/A
Theater	--	--	--	--	--	--	--	--	10	1.0%	N/A	N/A
Visual Arts	--	--	--	--	--	--	--	--	24	2.4%	N/A	N/A
<i>Sub-Total: CA</i>	<i>118</i>	<i>15.8%</i>	<i>98</i>	<i>12.6%</i>	<i>156</i>	<i>18.9%</i>	<i>164</i>	<i>18.2%</i>	<i>204</i>	<i>20.3%</i>	<i>72.9%</i>	<i>24.4%</i>
Economics	2	0.3%	3	0.4%	2	0.2%	0	0.0%	2	0.2%	0.0%	N/A
Environmental Studies	1	0.1%	1	0.1%	1	0.1%	1	0.1%	1	0.1%	N/A	0.0%
History	1	0.1%	2	0.3%	0	0.0%	1	0.1%	1	0.1%	N/A	N/A
Law and Society	6	0.8%	6	0.8%	5	0.6%	6	0.7%	7	0.7%	16.7%	16.7%
Metropolitan Studies	2	0.3%	0	0.0%	0	0.0%	0	0.0%	0	0.0%	-100.0%	N/A
Political Science	2	0.3%	1	0.1%	0	0.0%	0	0.0%	0	0.0%	-100.0%	N/A
Psychology	46	6.2%	47	6.1%	68	8.3%	94	10.4%	112	11.1%	143.5%	19.1%
Social Science	9	1.2%	23	3.0%	22	2.7%	23	2.6%	18	1.8%	100.0%	-21.7%
Social Work	38	5.1%	40	5.2%	31	3.8%	23	2.6%	20	2.0%	-47.4%	-13.0%
Sociology	13	1.7%	20	2.6%	15	1.8%	21	2.3%	23	2.3%	76.9%	9.5%
<i>Sub-Total: SSSH</i>	<i>120</i>	<i>16.1%</i>	<i>143</i>	<i>18.5%</i>	<i>144</i>	<i>17.5%</i>	<i>169</i>	<i>18.8%</i>	<i>184</i>	<i>18.3%</i>	<i>53.3%</i>	<i>8.9%</i>
Biochemistry	--	--	4	0.5%	5	0.6%	6	0.7%	4	0.4%	N/A	-33.3%
Biology	26	3.5%	20	2.6%	14	1.7%	15	1.7%	18	1.8%	-30.8%	20.0%
Chemistry	6	0.8%	3	0.4%	1	0.1%	5	0.6%	4	0.4%	-33.3%	-20.0%
Clinical Lab. Sciences	1	0.1%	0	0.0%	0	0.0%	0	0.0%	0	0.0%	N/A	N/A
Computer Science	8	1.1%	16	2.1%	11	1.3%	9	1.0%	14	1.4%	75.0%	55.6%
Environmental Science	6	0.8%	9	1.2%	4	0.5%	3	0.3%	7	0.7%	16.7%	133.3%
Environmental Studies	32	4.3%	22	2.8%	18	2.2%	15	1.7%	11	1.1%	-65.6%	-26.7%
Mathematics	5	0.7%	3	0.4%	8	1.0%	4	0.4%	8	0.8%	60.0%	100.0%
Nursing	37	5.0%	46	5.9%	48	5.8%	54	6.0%	69	6.9%	86.5%	27.8%
Physics	3	0.4%	2	0.3%	2	0.2%	0	0.0%	2	0.2%	-33.3%	N/A
Psychology	27	3.6%	35	4.5%	18	2.2%	28	3.1%	23	2.3%	-14.8%	-17.9%
<i>Sub-Total: TAS</i>	<i>151</i>	<i>20.2%</i>	<i>160</i>	<i>20.6%</i>	<i>129</i>	<i>15.7%</i>	<i>139</i>	<i>15.4%</i>	<i>160</i>	<i>15.9%</i>	<i>6.0%</i>	<i>15.1%</i>
M.A. in Liberal Studies	14	1.9%	13	1.7%	2	0.2%	12	1.3%	10	1.0%	-28.6%	-16.7%
M. in Business Admin.	--	--	--	--	8	1.0%	12	1.3%	8	0.8%	N/A	-33.3%
M.S. in Educational Tech.	21	2.8%	30	3.9%	44	5.3%	43	4.8%	80	8.0%	N/A	86.0%
<i>Sub-Total: TAS</i>	<i>35</i>	<i>4.7%</i>	<i>43</i>	<i>5.5%</i>	<i>54</i>	<i>6.6%</i>	<i>67</i>	<i>7.4%</i>	<i>98</i>	<i>9.7%</i>	<i>180.0%</i>	<i>46.3%</i>
Total	747		775		824		900		1,006		34.7%	11.8%

DEGREES AWARDED BY MAJOR (WITH GRADUATE PROGRAMS), 1998-99 TO 2002-03

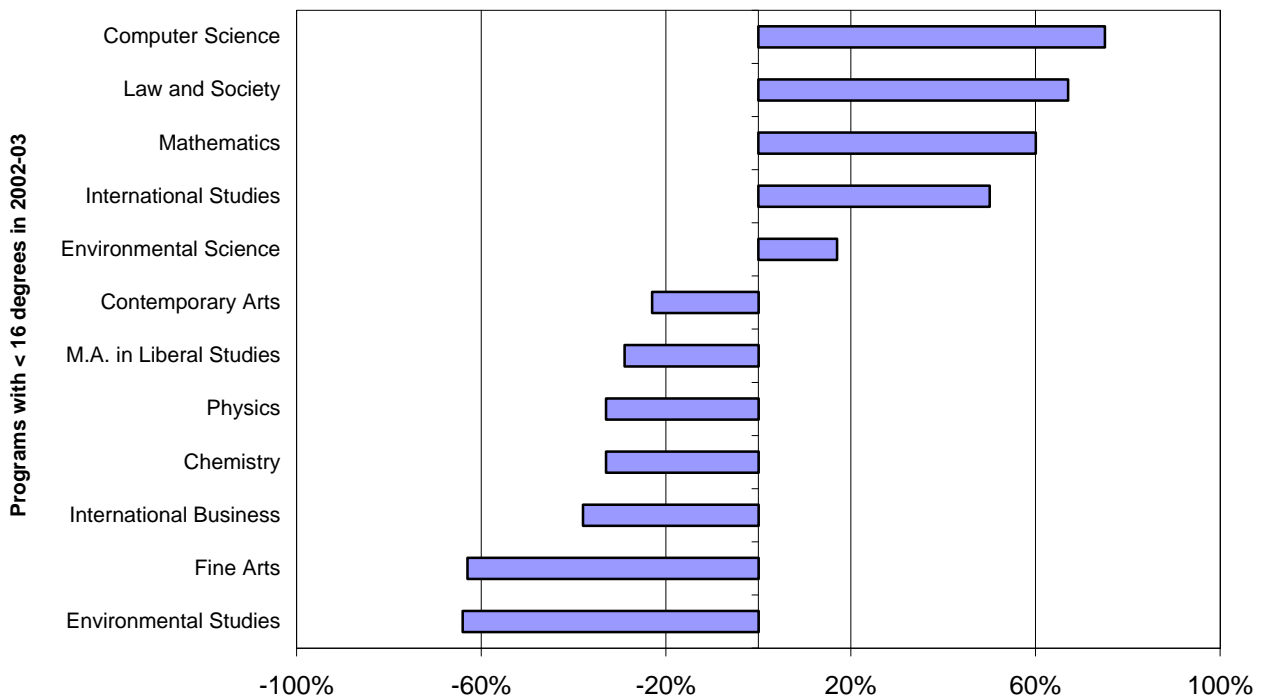
Major/Program	1998-99		1999-00		2000-01		2001-02		2002-03		Pct. Chg.	Pct. Chg.
	No.	Pct.	No.	Pct.	No.	Pct.	No.	Pct.	No.	Pct.	98/99 to 02/03	2-Jan to 02/03
Accounting	56	7.5%	40	5.2%	21	2.5%	31	3.4%	39	3.9%	-30.4%	25.8%
American Studies	2	0.3%	4	0.5%	3	0.4%	6	0.7%	8	0.8%	300.0%	33.3%
American/Int'l Studies	0	0.0%	1	0.1%	1	0.1%	0	0.0%	0	0.0%	N/A	N/A
Biochemistry	--	--	4	0.5%	5	0.6%	6	0.7%	4	0.4%	N/A	-33.3%
Biology	26	3.5%	20	2.6%	14	1.7%	15	1.7%	18	1.8%	-30.8%	20.0%
Business Administration	107	14.3%	124	16.0%	119	14.4%	126	14.0%	128	12.7%	19.6%	1.6%
Chemistry	6	0.8%	3	0.4%	1	0.1%	5	0.6%	4	0.4%	-33.3%	-20.0%
Clinical Lab Sciences[1]	1	0.1%	0	0.0%	0	0.0%	0	0.0%	0	0.0%	-100.0%	N/A
Communication Arts	78	10.4%	62	8.0%	101	12.3%	118	13.1%	143	14.2%	143.0%	21.2%
Computer Science	8	1.1%	16	2.1%	11	1.3%	9	1.0%	14	1.4%	75.0%	55.6%
Contemporary Arts	13	1.7%	9	1.2%	20	2.4%	9	1.0%	10	1.0%	-23.1%	11.1%
Economics[2]	16	2.1%	14	1.8%	16	1.9%	8	0.9%	18	1.8%	12.5%	125.0%
Environmental Science	6	0.8%	9	1.2%	4	0.5%	3	0.3%	7	0.7%	16.7%	133.3%
Environmental Studies[3]	33	4.4%	23	3.0%	19	2.3%	16	1.8%	12	1.2%	-63.6%	-25.0%
Fine Arts	27	3.6%	27	3.5%	35	4.2%	37	4.1%	10	1.0%	-63.0%	-73.0%
History[4]	19	2.5%	20	2.6%	17	2.1%	15	1.7%	29	2.9%	52.6%	93.3%
Information Systems	39	5.2%	36	4.6%	58	7.0%	71	7.9%	52	5.2%	33.3%	-26.8%
International Business	26	3.5%	17	2.2%	23	2.8%	23	2.6%	16	1.6%	-38.5%	-30.4%
International Studies	6	0.8%	10	1.3%	7	0.8%	8	0.9%	9	0.9%	50.0%	12.5%
Law and Society[5]	9	1.2%	15	1.9%	15	1.8%	21	2.3%	15	1.5%	66.7%	-28.6%
Literature	33	4.4%	48	6.2%	53	6.4%	45	5.0%	38	3.8%	15.2%	-15.6%
M.A. in Liberal Studies	14	1.9%	13	1.7%	2	0.2%	12	1.3%	10	1.0%	-28.6%	-16.7%
M. in Business Admin.	--	--	--	--	8	1.0%	12	1.3%	8	0.8%	N/A	-33.3%
M.S. in Ed. Technology	21	2.8%	30	3.9%	44	5.3%	43	4.8%	80	8.0%	N/A	86.0%
Mathematics	5	0.7%	3	0.4%	8	1.0%	4	0.4%	8	0.8%	60.0%	100.0%
Metropolitan Studies	2	0.3%	0	0.0%	0	0.0%	0	0.0%	0	0.0%	-100.0%	N/A
Music	--	--	--	--	--	--	--	--	7	0.7%	N/A	N/A
Nursing	37	5.0%	46	5.9%	48	5.8%	54	6.0%	69	6.9%	86.5%	27.8%
Physics	3	0.4%	2	0.3%	2	0.2%	0	0.0%	2	0.2%	-33.3%	N/A
Political Science[6]	21	2.8%	14	1.8%	15	1.8%	14	1.6%	18	1.8%	-14.3%	28.6%
Psychology[7]	73	9.8%	82	10.6%	86	10.4%	122	13.6%	135	13.4%	84.9%	10.7%
Social Science	9	1.2%	23	3.0%	22	2.7%	23	2.6%	18	1.8%	100.0%	-21.7%
Social Work	38	5.1%	40	5.2%	31	3.8%	23	2.6%	20	2.0%	-47.4%	-13.0%
Sociology	13	1.7%	20	2.6%	15	1.8%	21	2.3%	23	2.3%	76.9%	9.5%
Theater	--	--	--	--	--	--	--	--	10	1.0%	N/A	N/A
Visual Arts	--	--	--	--	--	--	--	--	24	2.4%	N/A	N/A
Total	747		775		824		900		1,006		34.7%	11.8%

- [1] Joint degree with UMDNJ.
- [2] Includes students from SAB and SSHS.
- [3] Includes students from SSHS and TAS.
- [4] Includes students from AIS and SSHS.
- [5] Includes students from AIS and SSHS.
- [6] Includes students from AIS and SSHS.
- [7] Includes students from SSHS and TAS.

PCT CHANGE (98/99 TO 02/03) IN DEGREES AWARDED BY PRIMARY MAJOR

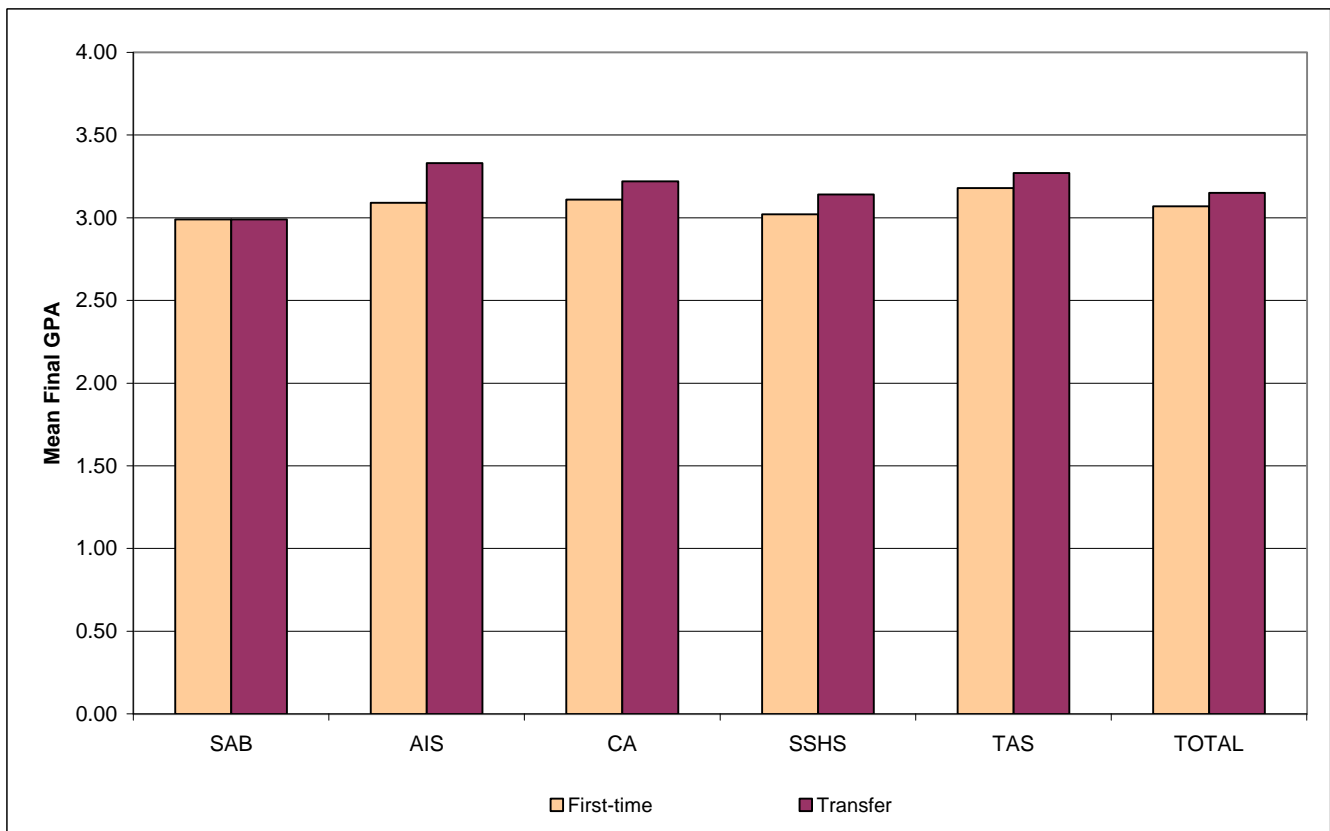


PCT CHANGE (98/99 TO 02/03) IN DEGREES AWARDED BY PRIMARY MAJOR



**MEAN FINAL GRADE POINT AVERAGES BY SCHOOL AND INITIAL ADMISSIONS TYPE
2002-03 DEGREE RECIPIENTS, UNDERGRADUATE ONLY**

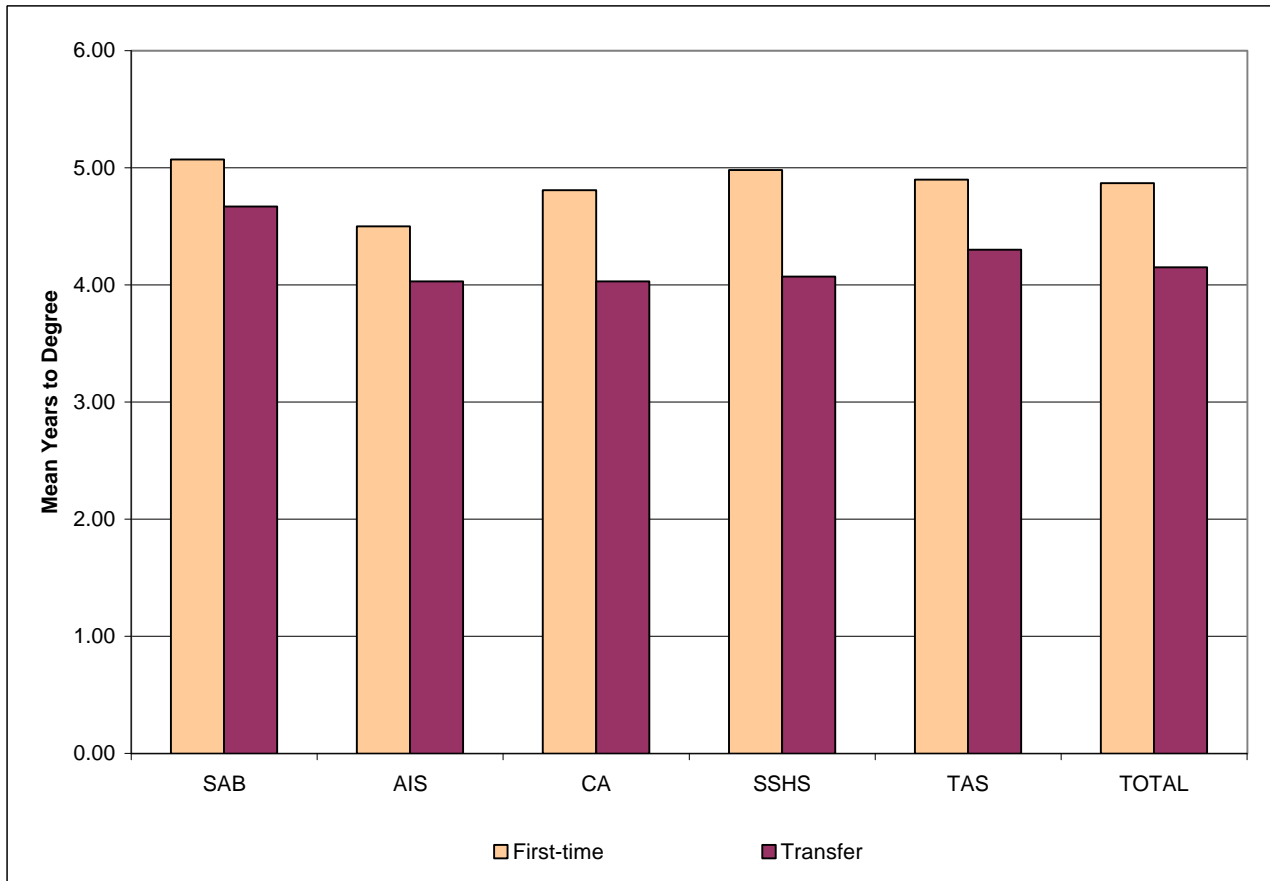
School	Mean Final Grade Point Average of First-time Students		Mean Final Grade Point Average of Transfer Students		Overall Mean GPA
	Number	Mean GPA	Number	Mean GPA	
Admin. & Business	98	2.99	153	2.99	2.99
Amer. & Int'l Studies	60	3.09	49	3.33	3.20
Contemporary Arts	111	3.11	93	3.22	3.16
Soc. Sci. & Hum. Serv.	77	3.02	107	3.14	3.09
Theoretical & App. Sci.	64	3.18	96	3.27	3.23
Overall	410	3.07	498	3.15	3.12



**MEAN TIME TO DEGREE BY SCHOOL AND INITIAL ADMISSIONS TYPE
FY2003 DEGREE RECIPIENTS, FALL UNDERGRAD ENTRANTS ONLY**

School	Mean Time to Degree (TTD) of First-time Students		Mean Time to Degree (TTD) of Transfer Students	
	Number	Mean Years to Degree*	Number	Mean Years to Degree*
Admin. & Business	84	5.07	96	4.67
Amer. & Int'l Studies	52	4.50	35	4.03
Contemporary Arts	100	4.81	68	4.03
Soc. Sci. & Hum. Serv.	71	4.98	74	4.07
Theoretical & App. Sci.	59	4.90	80	4.30
Overall	366	4.87	353	4.15

* Calculated from first matriculation date (fall entrants only). Ignores stop-out behavior.



NEW UNDERGRADUATE STUDENT COHORT RETENTION RATES

Fall of Entry	Sub-Cohorts*	Original Size	Retained One-Year		Retained Two-Years		Retained Three-Years		Retained Four-Years		Retained Five-Years		Retained Six-Years	
			#	Rate	#	Rate	#	Rate	#	Rate	#	Rate	#	Rate
1993	FTFTF	362	269	74.3%	205	56.6%	180	49.7%	109	30.1%	29	8.0%	13	3.6%
	PTFTF	24	12	50.0%	9	37.5%	7	29.2%	7	29.2%	4	16.7%	4	16.7%
	FTTR	379	282	74.4%	160	42.2%	78	20.6%	27	7.1%	16	4.2%	11	2.9%
	PTTR	199	126	63.3%	88	44.2%	61	30.7%	42	21.1%	24	12.1%	12	6.0%
	Total	964	689	71.5%	462	47.9%	326	33.8%	185	19.2%	73	7.6%	40	4.1%
1994	FTFTF	343	250	72.9%	197	57.4%	184	53.6%	106	30.9%	31	9.0%	10	2.9%
	PTFTF	22	11	50.0%	6	27.3%	4	18.2%	1	4.5%	0	0.0%	0	0.0%
	FTTR	341	253	74.2%	162	47.5%	71	20.8%	36	10.6%	17	5.0%	9	2.6%
	PTTR	212	144	67.9%	120	56.6%	76	35.8%	54	25.5%	33	15.6%	25	11.8%
	Total	918	658	71.7%	485	52.8%	335	36.5%	197	21.5%	81	8.8%	44	4.8%
1995	FTFTF	319	247	77.4%	184	57.7%	174	54.5%	99	31.0%	33	10.3%	15	4.7%
	PTFTF	21	10	47.6%	7	33.3%	6	28.6%	4	19.0%	3	14.3%	3	14.3%
	FTTR	311	236	75.9%	160	51.4%	72	23.2%	29	9.3%	15	4.8%	11	3.5%
	PTTR	197	119	60.4%	97	49.2%	72	36.5%	48	24.4%	33	16.8%	22	11.2%
	Total	848	612	72.2%	448	52.8%	324	38.2%	180	21.2%	84	9.9%	51	6.0%
1996	FTFTF	413	337	81.6%	281	68.0%	255	61.7%	153	37.0%	38	9.2%	22	5.3%
	PTFTF	17	10	58.8%	4	23.5%	3	17.6%	3	17.6%	1	5.9%	1	5.9%
	FTTR	339	257	75.8%	161	47.5%	67	19.8%	33	9.7%	8	2.4%	6	1.8%
	PTTR	210	124	59.0%	92	43.8%	64	30.5%	35	16.7%	26	12.4%	19	9.0%
	Total	979	728	74.4%	538	55.0%	389	39.7%	224	22.9%	73	7.5%	48	4.9%
1997	FTFTF	454	359	79.1%	306	67.4%	294	64.8%	162	35.7%	45	9.9%	22	4.8%
	PTFTF	17	8	47.1%	7	41.2%	4	23.5%	4	23.5%	3	17.6%	2	11.8%
	FTTR	351	269	76.6%	168	47.9%	73	20.8%	29	8.3%	12	3.4%	12	3.4%
	PTTR	208	139	66.8%	104	50.0%	69	33.2%	44	21.2%	31	14.9%	22	10.6%
	Total	1,030	775	75.2%	585	56.8%	440	42.7%	239	23.2%	91	8.8%	58	5.6%
1998	FTFTF	472	392	83.1%	353	74.8%	321	68.0%	167	35.4%	47	10.0%	-	-
	PTFTF	17	12	70.6%	9	52.9%	7	41.2%	6	35.3%	4	23.5%	-	-
	FTTR	351	264	75.2%	171	48.7%	77	21.9%	35	10.0%	12	3.4%	-	-
	PTTR	183	120	65.6%	91	49.7%	67	36.6%	39	21.3%	29	15.8%	-	-
	Total	1,023	788	77.0%	624	61.0%	472	46.1%	247	24.1%	92	9.0%	-	-
1999	FTFTF	528	435	82.4%	378	71.6%	348	65.9%	146	27.7%	-	-	-	-
	PTFTF	8	4	50.0%	3	37.5%	2	25.0%	0	0.0%	-	-	-	-
	FTTR	364	274	75.3%	169	46.4%	88	24.2%	37	10.2%	-	-	-	-
	PTTR	152	93	61.2%	74	48.7%	53	34.9%	37	24.3%	-	-	-	-
	Total	1,052	806	76.6%	624	59.3%	491	46.7%	220	20.9%	-	-	-	-
2000	FTFTF	638	542	85.0%	490	76.8%	459	71.9%	-	-	-	-	-	-
	PTFTF	6	4	66.7%	4	66.7%	4	66.7%	-	-	-	-	-	-
	FTTR	369	276	74.8%	184	49.9%	75	20.3%	-	-	-	-	-	-
	PTTR	150	84	56.0%	65	43.3%	44	29.3%	-	-	-	-	-	-
	Total	1,163	906	77.9%	743	63.9%	582	50.0%	-	-	-	-	-	-
2001	FTFTF	628	525	83.6%	468	74.5%	-	-	-	-	-	-	-	-
	PTFTF	5	2	40.0%	2	40.0%	-	-	-	-	-	-	-	-
	FTTR	364	291	79.9%	190	52.2%	-	-	-	-	-	-	-	-
	PTTR	141	92	65.2%	73	51.8%	-	-	-	-	-	-	-	-
	Total	1,138	910	80.0%	733	64.4%	-	-	-	-	-	-	-	-
2002	FTFTF	684	595	87.0%	-	-	-	-	-	-	-	-	-	-
	PTFTF	3	1	33.3%	-	-	-	-	-	-	-	-	-	-
	FTTR	433	338	78.1%	-	-	-	-	-	-	-	-	-	-
	PTTR	135	85	63.0%	-	-	-	-	-	-	-	-	-	-
	Total	1,255	1,019	81.2%	-	-	-	-	-	-	-	-	-	-

* FTFTF=full-time, first-time freshmen; PTFTF=part-time, first-time freshmen; FTTR=full-time transfers; and PTTR=part-time transfers.

NEW UNDERGRADUATE STUDENT COHORT CUMULATIVE GRADUATION RATES

Fall of Entry	Sub-Cohorts*	Original Size	One-Year Cumulative Graduation		Two-Year Cumulative Graduation		Three-Year Cumulative Graduation		Four-Year Cumulative Graduation		Five-Year Cumulative Graduation		Six-Year Cumulative Graduation	
			#	Rate	#	Rate	#	Rate	#	Rate	#	Rate	#	Rate
1993	FTFTF	362	0	0.0%	0	0.0%	2	0.6%	62	17.1%	127	35.1%	141	39.0%
	PTFTF	24	0	0.0%	0	0.0%	0	0.0%	1	4.2%	3	12.5%	4	16.7%
	FTTR	379	4	1.1%	89	23.5%	168	44.3%	210	55.4%	221	58.3%	230	60.7%
	PTTR	199	0	0.0%	7	3.5%	27	13.6%	43	21.6%	56	28.1%	65	32.7%
	Total	964	4	0.4%	96	10.0%	197	20.4%	316	32.8%	407	42.2%	440	45.6%
1994	FTFTF	343	0	0.0%	0	0.0%	1	0.3%	73	21.3%	140	40.8%	155	45.2%
	PTFTF	22	0	0.0%	0	0.0%	0	0.0%	1	4.5%	1	4.5%	1	4.5%
	FTTR	341	4	1.2%	83	24.3%	165	48.4%	204	59.8%	222	65.1%	229	67.2%
	PTTR	212	0	0.0%	8	3.8%	35	16.5%	56	26.4%	72	34.0%	77	36.3%
	Total	918	4	0.4%	91	9.9%	201	21.9%	334	36.4%	435	47.4%	462	50.3%
1995	FTFTF	319	0	0.0%	0	0.0%	1	0.3%	67	21.0%	133	41.7%	149	46.7%
	PTFTF	21	0	0.0%	0	0.0%	0	0.0%	0	0.0%	0	0.0%	1	4.8%
	FTTR	311	0	0.0%	53	17.0%	131	42.1%	169	54.3%	183	58.8%	187	60.1%
	PTTR	197	0	0.0%	4	2.0%	21	10.7%	36	18.3%	49	24.9%	58	29.4%
	Total	848	0	0.0%	57	6.7%	153	18.0%	272	32.1%	365	43.0%	395	46.6%
1996	FTFTF	413	0	0.0%	0	0.0%	4	1.0%	102	24.7%	205	49.6%	224	54.2%
	PTFTF	17	0	0.0%	0	0.0%	0	0.0%	0	0.0%	1	5.9%	1	5.9%
	FTTR	339	1	0.3%	56	16.5%	129	38.1%	176	51.9%	191	56.3%	194	57.2%
	PTTR	210	0	0.0%	8	3.8%	32	15.2%	55	26.2%	65	31.0%	72	34.3%
	Total	979	1	0.1%	64	6.5%	165	16.9%	333	34.0%	462	47.2%	491	50.2%
1997	FTFTF	454	0	0.0%	0	0.0%	1	0.2%	131	28.9%	222	48.9%	244	53.7%
	PTFTF	17	0	0.0%	0	0.0%	0	0.0%	0	0.0%	1	5.9%	1	5.9%
	FTTR	351	2	0.6%	69	19.7%	154	43.9%	195	55.6%	212	60.4%	217	61.8%
	PTTR	208	0	0.0%	6	2.9%	22	10.6%	44	21.2%	55	26.4%	67	32.2%
	Total	1,030	2	0.2%	75	7.3%	177	17.2%	370	35.9%	490	47.6%	529	51.4%
1998	FTFTF	472	0	0.0%	0	0.0%	6	1.3%	170	36.0%	267	56.6%	-	-
	PTFTF	17	0	0.0%	0	0.0%	0	0.0%	1	5.9%	3	17.6%	-	-
	FTTR	351	1	0.3%	70	19.9%	143	40.7%	183	52.1%	200	57.0%	-	-
	PTTR	183	0	0.0%	7	3.8%	25	13.7%	48	26.2%	57	31.1%	-	-
	Total	1,023	1	0.1%	77	7.5%	174	17.0%	402	39.3%	527	51.5%	-	-
1999	FTFTF	528	0	0.0%	1	0.2%	7	1.3%	203	38.4%	-	-	-	-
	PTFTF	8	0	0.0%	0	0.0%	0	0.0%	0	0.0%	-	-	-	-
	FTTR	364	2	0.5%	81	22.3%	159	43.7%	204	56.0%	-	-	-	-
	PTTR	152	0	0.0%	5	3.3%	14	9.2%	32	21.1%	-	-	-	-
	Total	1,052	2	0.2%	87	8.3%	180	17.1%	439	41.7%	-	-	-	-
2000	FTFTF	638	0	0.0%	2	0.3%	10	1.6%	-	-	-	-	-	-
	PTFTF	6	0	0.0%	0	0.0%	0	0.0%	-	-	-	-	-	-
	FTTR	369	3	0.8%	75	20.3%	172	46.6%	-	-	-	-	-	-
	PTTR	150	0	0.0%	4	2.7%	23	15.3%	-	-	-	-	-	-
	Total	1,163	3	0.3%	81	7.0%	205	17.6%	-	-	-	-	-	-
2001	FTFTF	628	0	0.0%	0	0.0%	-	-	-	-	-	-	-	-
	PTFTF	5	0	0.0%	0	0.0%	-	-	-	-	-	-	-	-
	FTTR	364	0	0.0%	78	21.4%	-	-	-	-	-	-	-	-
	PTTR	141	0	0.0%	3	2.1%	-	-	-	-	-	-	-	-
	Total	1,138	0	0.0%	81	7.1%	-	-	-	-	-	-	-	-
2002	FTFTF	684	0	0.0%	-	-	-	-	-	-	-	-	-	-
	PTFTF	3	0	0.0%	-	-	-	-	-	-	-	-	-	-
	FTTR	433	3	0.7%	-	-	-	-	-	-	-	-	-	-
	PTTR	135	0	0.0%	-	-	-	-	-	-	-	-	-	-
	Total	1,255	3	0.2%	-	-	-	-	-	-	-	-	-	-

* FTFTF=full-time, first-time freshmen; PTFTF=part-time, first-time freshmen; FTTR=full-time transfers; and PTTR=part-time transfers.
Data captures all graduates through August 2003.

SIX-YEAR RETENTION BY ADMIT TYPE FOR FULL-TIME, FIRST-TIME FRESHMEN

Fall of Entry	Sub-Cohorts	Original Size	Retained One-Year		Retained Two-Years		Retained Three-Years		Retained Four-Years		Retained Five-Years		Retained Six-Years	
			#	Rate	#	Rate	#	Rate	#	Rate	#	Rate	#	Rate
1993	Regular	240	171	71.3%	140	58.3%	128	53.3%	69	28.8%	11	4.6%	8	3.3%
	EOF	83	65	78.3%	40	48.2%	28	33.7%	24	28.9%	10	12.0%	3	3.6%
	Special	39	33	84.6%	25	64.1%	24	61.5%	16	41.0%	8	20.5%	2	5.1%
	Total	362	269	74.3%	205	56.6%	180	49.7%	109	30.1%	29	8.0%	13	3.6%
1994	Regular	217	152	70.0%	125	57.6%	124	57.1%	61	28.1%	19	8.8%	5	2.3%
	EOF	90	68	75.6%	46	51.1%	37	41.1%	29	32.2%	7	7.8%	2	2.2%
	Special	36	30	83.3%	26	72.2%	23	63.9%	16	44.4%	5	13.9%	3	8.3%
	Total	343	250	72.9%	197	57.4%	184	53.6%	106	30.9%	31	9.0%	10	2.9%
1995	Regular	183	140	76.5%	113	61.7%	110	60.1%	53	29.0%	14	7.7%	9	4.9%
	EOF	97	74	76.3%	46	47.4%	40	41.2%	32	33.0%	15	15.5%	6	6.2%
	Special	39	33	84.6%	25	64.1%	24	61.5%	14	35.9%	4	10.3%	0	0.0%
	Total	319	247	77.4%	184	57.7%	174	54.5%	99	31.0%	33	10.3%	15	4.7%
1996	Regular	296	239	80.7%	202	68.2%	184	62.2%	102	34.5%	25	8.4%	15	5.1%
	EOF	74	68	91.9%	52	70.3%	46	62.2%	34	45.9%	10	13.5%	6	8.1%
	Special	43	30	69.8%	27	62.8%	25	58.1%	17	39.5%	3	7.0%	1	2.3%
	Total	413	337	81.6%	281	68.0%	255	61.7%	153	37.0%	38	9.2%	22	5.3%
1997	Regular	340	262	77.1%	220	64.7%	212	62.4%	100	29.4%	31	9.1%	15	4.4%
	EOF	67	60	89.6%	52	77.6%	52	77.6%	35	52.2%	9	13.4%	4	6.0%
	Special	47	37	78.7%	34	72.3%	30	63.8%	27	57.4%	5	10.6%	3	6.4%
	Total	454	359	79.1%	306	67.4%	294	64.8%	162	35.7%	45	9.9%	22	4.8%
1998	Regular	352	295	83.8%	271	77.0%	246	69.9%	124	35.2%	35	9.9%	-	-
	EOF	69	57	82.6%	46	66.7%	42	60.9%	23	33.3%	7	10.1%	-	-
	Special	51	40	78.4%	36	70.6%	33	64.7%	20	39.2%	5	9.8%	-	-
	Total	472	392	83.1%	353	74.8%	321	68.0%	167	35.4%	47	10.0%	-	-
1999	Regular	414	330	79.7%	292	70.5%	270	65.2%	104	25.1%	-	-	-	-
	EOF	60	56	93.3%	44	73.3%	41	68.3%	21	35.0%	-	-	-	-
	Special	54	49	90.7%	42	77.8%	37	68.5%	21	38.9%	-	-	-	-
	Total	528	435	82.4%	378	71.6%	348	65.9%	146	27.7%	-	-	-	-
2000	Regular	511	439	85.9%	399	78.1%	380	74.4%	-	-	-	-	-	-
	EOF	64	55	85.9%	50	78.1%	41	64.1%	-	-	-	-	-	-
	Special	63	48	76.2%	41	65.1%	38	60.3%	-	-	-	-	-	-
	Total	638	542	85.0%	490	76.8%	459	71.9%	-	-	-	-	-	-
2001	Regular	497	414	83.3%	370	74.4%	-	-	-	-	-	-	-	-
	EOF	69	60	87.0%	54	78.3%	-	-	-	-	-	-	-	-
	Special	62	51	82.3%	44	71.0%	-	-	-	-	-	-	-	-
	Total	628	525	83.6%	468	74.5%	-	-	-	-	-	-	-	-
2002	Regular	543	485	89.3%	-	-	-	-	-	-	-	-	-	-
	EOF	73	60	82.2%	-	-	-	-	-	-	-	-	-	-
	Special	68	50	73.5%	-	-	-	-	-	-	-	-	-	-
	Total	684	595	87.0%	-	-	-	-	-	-	-	-	-	-

TEN-YEAR CUMULATIVE GRADUATION RATES BY ADMIT TYPE FOR FULL-TIME, FIRST-TIME FRESHMEN

Fall of Entry	Sub-Cohorts	Original Size	Four-Year Cumulative Graduation [1]		Five-Year Cumulative Graduation		Six-Year Cumulative Graduation		Seven-Year Cumulative Graduation		Eight-Year Cumulative Graduation		Nine-Year Cumulative Graduation		Ten-Year Cumulative Graduation	
			#	Rate	#	Rate	#	Rate	#	Rate	#	Rate	#	Rate	#	Rate
1990	Regular	274	55	20.1%	98	35.8%	104	38.0%	108	39.4%	110	40.1%	112	40.9%	112	40.9%
	EOF	100	3	3.0%	13	13.0%	20	20.0%	24	24.0%	24	24.0%	24	24.0%	25	25.0%
	Special	47	3	6.4%	8	17.0%	8	17.0%	9	19.1%	9	19.1%	10	21.3%	10	21.3%
	Total	421	61	14.5%	119	28.3%	132	31.4%	141	33.5%	143	34.0%	146	34.7%	147	34.9%
1991	Regular	298	57	19.1%	119	39.9%	131	44.0%	135	45.3%	135	45.3%	137	46.0%	137	46.0%
	EOF	85	3	3.5%	11	12.9%	14	16.5%	17	20.0%	17	20.0%	18	21.2%	18	21.2%
	Special	42	9	21.4%	13	31.0%	16	38.1%	18	42.9%	18	42.9%	18	42.9%	19	45.2%
	Total	425	69	16.2%	143	33.6%	161	37.9%	170	40.0%	170	40.0%	173	40.7%	174	40.9%
1992	Regular	279	71	25.4%	126	45.2%	136	48.7%	139	49.8%	142	50.9%	142	50.9%	142	50.9%
	EOF	98	2	2.0%	16	16.3%	21	21.4%	22	22.4%	22	22.4%	22	22.4%	22	22.4%
	Special	42	4	9.5%	10	23.8%	15	35.7%	16	38.1%	16	38.1%	16	38.1%	16	38.1%
	Total	419	77	18.4%	152	36.3%	172	41.1%	177	42.2%	180	43.0%	180	43.0%	180	43.0%
1993	Regular	240	58	24.2%	105	43.8%	111	46.3%	113	47.1%	113	47.1%	113	47.1%	113	47.1%
	EOF	83	1	1.2%	8	9.6%	13	15.7%	15	18.1%	16	19.3%	16	19.3%	16	19.3%
	Special	39	3	7.7%	14	35.9%	17	43.6%	17	43.6%	17	43.6%	17	43.6%	19	48.7%
	Total	362	62	17.1%	127	35.1%	141	39.0%	145	40.1%	146	40.3%	146	40.3%	148	40.9%
1994	Regular	217	60	27.6%	100	46.1%	111	51.2%	115	53.0%	115	53.0%	117	53.9%	-	-
	EOF	90	6	6.7%	23	25.6%	25	27.8%	26	28.9%	26	28.9%	26	28.9%	-	-
	Special	36	7	19.4%	17	47.2%	19	52.8%	20	55.6%	20	55.6%	20	55.6%	-	-
	Total	343	73	21.3%	140	40.8%	155	45.2%	161	46.9%	161	46.9%	163	47.5%	-	-
1995	Regular	183	52	28.4%	95	51.9%	98	53.6%	99	54.1%	100	54.6%	-	-	-	-
	EOF	97	4	4.1%	17	17.5%	27	27.8%	30	30.9%	32	33.0%	-	-	-	-
	Special	39	11	28.2%	21	53.8%	24	61.5%	24	61.5%	24	61.5%	-	-	-	-
	Total	319	67	21.0%	133	41.7%	149	46.7%	153	48.0%	156	48.9%	-	-	-	-
1996	Regular	296	87	29.4%	155	52.4%	169	57.1%	172	58.1%	-	-	-	-	-	-
	EOF	74	9	12.2%	27	36.5%	32	43.2%	33	44.6%	-	-	-	-	-	-
	Special	43	6	14.0%	23	53.5%	23	53.5%	23	53.5%	-	-	-	-	-	-
	Total	413	102	24.7%	205	49.6%	224	54.2%	228	55.2%	-	-	-	-	-	-
1997	Regular	340	114	33.5%	172	50.6%	186	54.7%	-	-	-	-	-	-	-	-
	EOF	67	11	16.4%	29	43.3%	34	50.7%	-	-	-	-	-	-	-	-
	Special	47	6	12.8%	21	44.7%	24	51.1%	-	-	-	-	-	-	-	-
	Total	454	131	28.9%	222	48.9%	244	53.7%	-	-	-	-	-	-	-	-
1998	Regular	352	122	34.7%	211	59.9%	-	-	-	-	-	-	-	-	-	-
	EOF	69	15	21.7%	33	47.8%	-	-	-	-	-	-	-	-	-	-
	Special	51	13	25.5%	23	45.1%	-	-	-	-	-	-	-	-	-	-
	Total	472	150	31.8%	267	56.6%	-	-	-	-	-	-	-	-	-	-
1999	Regular	414	172	41.5%	-	-	-	-	-	-	-	-	-	-	-	-
	EOF	60	20	33.3%	-	-	-	-	-	-	-	-	-	-	-	-
	Special	54	11	20.4%	-	-	-	-	-	-	-	-	-	-	-	-
	Total	528	203	38.4%	-	-	-	-	-	-	-	-	-	-	-	-

[1] Includes all from cohort who are graduated in fewer than four years.