

SECTION IV:

DEGREES AWARDED AND

STUDENT OUTCOMES

2002 INSTITUTIONAL PROFILE

By Age

	Bachelor's		Master's		Total	
Less than 20	0	0.0%	0	0.0%	0	0.0%
20 to 24	492	59.1%	1	1.5%	493	54.8%
25 to 29	169	20.3%	19	28.4%	188	20.9%
30 to 39	91	10.9%	27	40.3%	118	13.1%
Greater than 39	81	9.7%	20	29.9%	101	11.2%
	833		67		900	

By Sex

	Bachelor's		Master's		Total	
Female	502	60.3%	43	64.2%	545	60.6%
Male	331	39.7%	24	35.8%	355	39.4%
	833		67		900	

By Ethnicity

	Bachelor's		Master's		Total	
American Indian/Native Alaskan	1	0.1%	1	1.5%	2	0.2%
Asian/Pacific Islander	56	6.7%	1	1.5%	57	6.3%
Black, non-Hispanic	60	7.2%	13	19.4%	73	8.1%
Hispanic	62	7.4%	1	1.5%	63	7.0%
White, non-Hispanic	654	78.5%	51	76.1%	705	78.3%
	833		67		900	

By Citizenship

	Bachelor's		Master's		Total	
U.S. Citizen/Permanent Resident	794	95.3%	65	97.0%	859	95.4%
non-Citizen/non-Resident	39	4.7%	2	3.0%	41	4.6%
	833		67		900	

By Ethnicity and Citizenship

	Bachelor's		Master's		Total	
American Indian/Native Alaskan	1	0.1%	1	1.5%	2	0.2%
Asian/Pacific Islander	37	4.4%	0	0.0%	37	4.1%
Black, non-Hispanic	56	6.7%	12	17.9%	68	7.6%
Hispanic	60	7.2%	1	1.5%	61	6.8%
White, non-Hispanic	640	76.8%	51	76.1%	691	76.8%
Nonresident Alien	39	4.7%	2	3.0%	41	4.6%
	833		67		900	

By Status When First Admitted

	Bachelor's		Master's		Total	
Regular Admit	326	39.1%	67	100.0%	393	43.7%
Special Admit	29	3.5%	0	0.0%	29	3.2%
EOF Admit	49	5.9%	0	0.0%	49	5.4%
Transfer Admit	421	50.5%	0	0.0%	421	46.8%
EOF Transfer Admit	8	1.0%	0	0.0%	8	0.9%
	833		67		900	

By Degree Type

	Bachelor's		Master's		Total	
Bachelor of Arts (BA)	473	56.8%	0	0.0%	473	52.6%
Bachelor of Science (BS)	283	34.0%	0	0.0%	283	31.4%
Bachelor of Science in Nursing (BSN)	54	6.5%	0	0.0%	54	6.0%
Bachelor of Social Work (BSW)	23	2.8%	0	0.0%	23	2.6%
Master of Arts in Liberal Studies (MA)	0	0.0%	12	17.9%	12	1.3%
Master of Business Administration (MBA)	0	0.0%	12	17.9%	12	1.3%
Master of Science in Educational Technology (MS)	0	0.0%	43	64.2%	43	4.8%
	833		67		900	

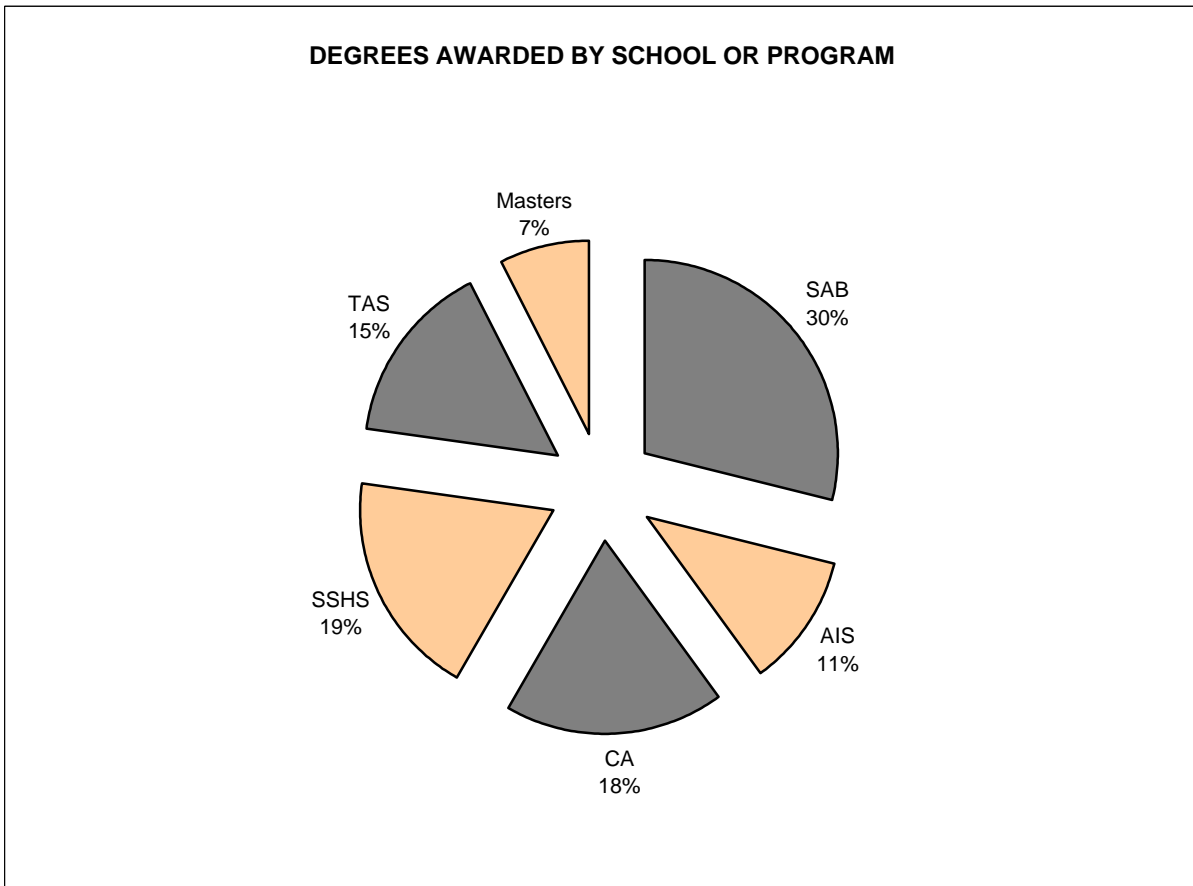
TOTAL 2001-02 DEGREES AWARDED = 900

	Bachelor of Arts (BA)		Bachelor of Science (BS)		Bachelor of Science in Nursing (BSN)		Bachelor of Social Work (BSW)		Master of Arts in Liberal Studies (MA)		Master of Business Admin. (MBA)		Master of Science in Ed. Tech. (MS)	
	Number	Percent	Number	Percent	Number	Percent	Number	Percent	Number	Percent	Number	Percent	Number	Percent
By Age														
Less than 20	0	0.0%	0	0.0%	0	0.0%	0	0.0%	0	0.0%	0	0.0%	0	0.0%
20 to 24	316	66.8%	157	55.5%	10	18.5%	9	39.1%	0	0.0%	0	0.0%	1	2.3%
25 to 29	102	21.6%	57	20.1%	6	11.1%	4	17.4%	0	0.0%	3	25.0%	16	37.2%
30 to 39	31	6.6%	37	13.1%	19	35.2%	4	17.4%	4	33.3%	7	58.3%	16	37.2%
> 39	24	5.1%	32	11.3%	19	35.2%	6	26.1%	8	66.7%	2	16.7%	10	23.3%
	473		283		54		23		12		12		43	
By Sex														
Female	299	63.2%	134	47.3%	48	88.9%	21	91.3%	7	58.3%	4	33.3%	32	74.4%
Male	174	36.8%	149	52.7%	6	11.1%	2	8.7%	5	41.7%	8	66.7%	11	25.6%
	473		283		54		23		12		12		43	
By Ethnicity														
Am. Ind./Nat. Al.	1	0.2%	0	0.0%	0	0.0%	0	0.0%	0	0.0%	0	0.0%	1	2.3%
Asian/Pac. Is.	18	3.8%	34	12.0%	3	5.6%	1	4.3%	0	0.0%	0	0.0%	1	2.3%
Black, non-Hisp.	38	8.0%	10	3.5%	8	14.8%	4	17.4%	0	0.0%	3	25.0%	10	23.3%
Hispanic	32	6.8%	23	8.1%	6	11.1%	1	4.3%	0	0.0%	0	0.0%	1	2.3%
White, non-Hisp.	384	81.2%	216	76.3%	37	68.5%	17	73.9%	12	100.0%	9	75.0%	30	69.8%
	473		283		54		23		12		12		43	
By Citizenship														
U.S. Citizen	454	96.0%	265	93.6%	53	98.1%	22	95.7%	12	100.0%	11	91.7%	42	97.7%
non-Citizen	19	4.0%	18	6.4%	1	1.9%	1	4.3%	0	0.0%	1	8.3%	1	2.3%
	473		283		54		23		12		12		43	
By Ethnicity & Citizenship														
Am. Ind./Nat. Al.	1	0.2%	0	0.0%	0	0.0%	0	0.0%	0	0.0%	0	0.0%	1	2.3%
Asian/Pac. Is.	12	2.5%	22	7.8%	3	5.6%	0	0.0%	0	0.0%	0	0.0%	0	0.0%
Black, non-Hisp.	35	7.4%	10	3.5%	7	13.0%	4	17.4%	0	0.0%	2	16.7%	10	23.3%
Hispanic	32	6.8%	21	7.4%	6	11.1%	1	4.3%	0	0.0%	0	0.0%	1	2.3%
White, non-Hisp.	374	79.1%	212	74.9%	37	68.5%	17	73.9%	12	100.0%	9	75.0%	30	69.8%
Nonresident Alien	19	4.0%	18	6.4%	1	1.9%	1	4.3%	0	0.0%	1	8.3%	1	2.3%
	473		283		54		23		12		12		43	
By Initial Admit Type														
Regular	211	44.6%	104	36.7%	7	13.0%	4	17.4%	12	100.0%	12	100.0%	43	100.0%
Special	21	4.4%	6	2.1%	2	3.7%	0	0.0%	0	0.0%	0	0.0%	0	0.0%
EOF	27	5.7%	16	5.7%	4	7.4%	2	8.7%	0	0.0%	0	0.0%	0	0.0%
Transfer	210	44.4%	153	54.1%	41	75.9%	17	73.9%	0	0.0%	0	0.0%	0	0.0%
EOF Transfer	4	0.8%	4	1.4%	0	0.0%	0	0.0%	0	0.0%	0	0.0%	0	0.0%
	473		283		54		23		12		12		43	

TOTAL 2001-02 DEGREES AWARDED = 900

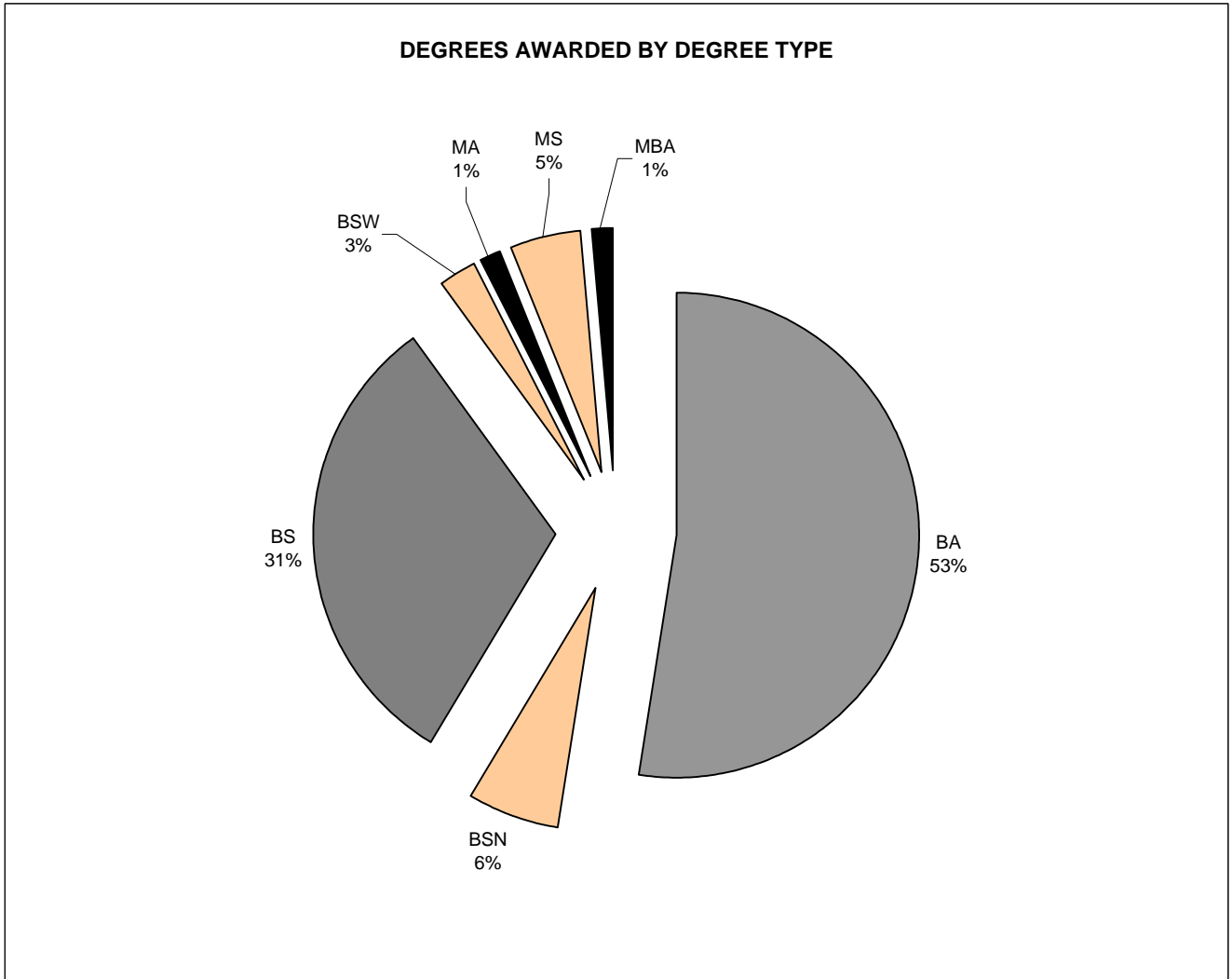
By School and Combined Graduate Programs

Administration and Business	259	28.8%
American and International Studies	102	11.3%
Contemporary Arts	164	18.2%
Social Science and Human Services	169	18.8%
Theoretical and Applied Sciences	139	15.4%
Master's Degree Programs (combined)	67	7.4%



TOTAL 2001-02 DEGREES AWARDED = 900

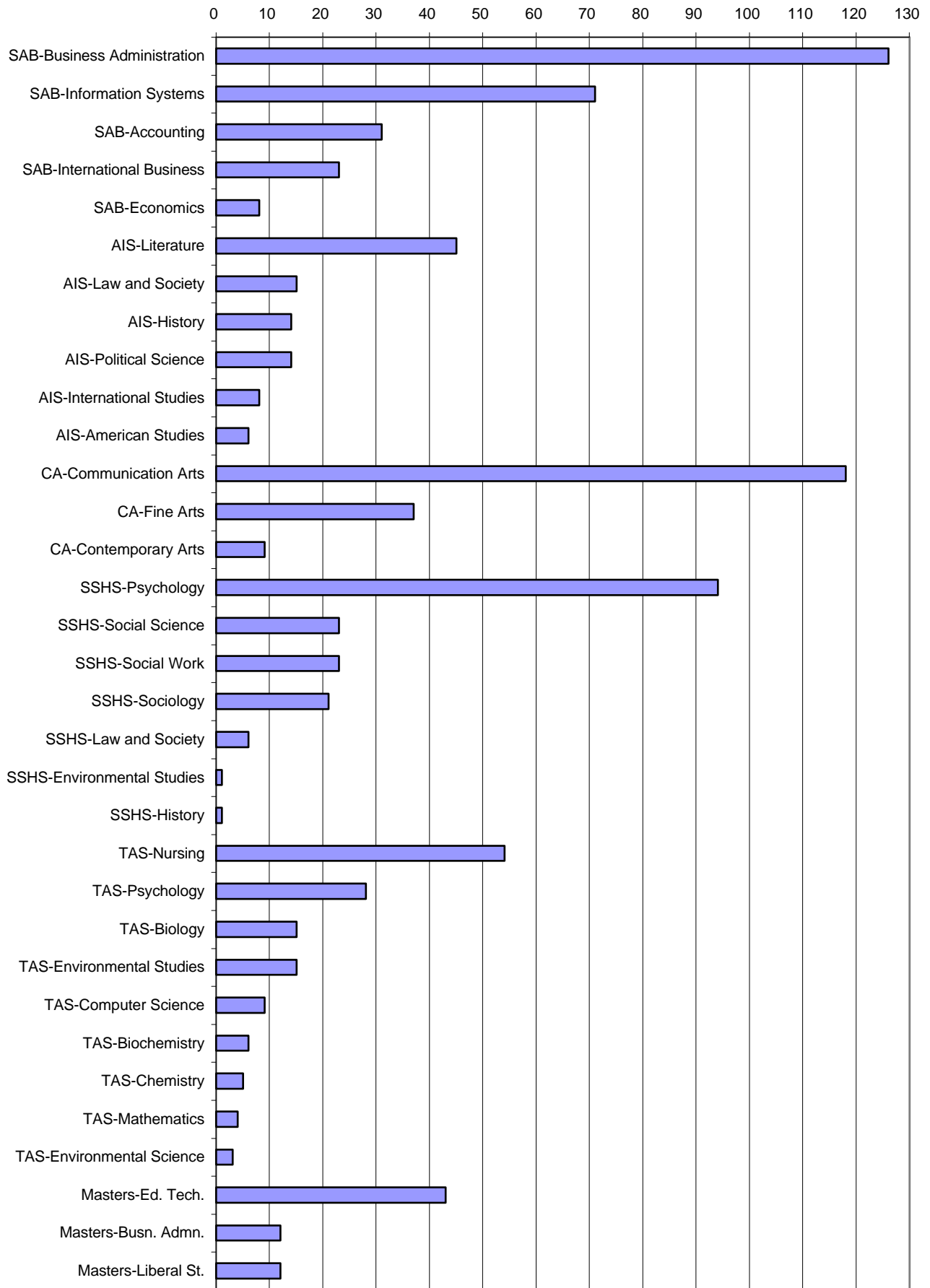
School or Program	BA		BS		BSN		BSW		MA		MBA		MS	
	No.	Pct.	No.	Pct.	No.	Pct.	No.	Pct.	No.	Pct.	No.	Pct.	No.	Pct.
Admin. & Business	31	6.6%	228	80.6%	0	0.0%	0	0.0%	0	0.0%	0	0.0%	0	0.0%
Amer. & Int'l Studies	102	21.6%	0	0.0%	0	0.0%	0	0.0%	0	0.0%	0	0.0%	0	0.0%
Contemporary Arts	164	34.7%	0	0.0%	0	0.0%	0	0.0%	0	0.0%	0	0.0%	0	0.0%
Soc. Sci. & Hum. Serv.	146	30.9%	0	0.0%	0	0.0%	23	100.0%	0	0.0%	0	0.0%	0	0.0%
Theoretical & App. Sci.	30	6.3%	55	19.4%	54	100.0%	0	0.0%	0	0.0%	0	0.0%	0	0.0%
Grad. Liberal Studies	0	0.0%	0	0.0%	0	0.0%	0	0.0%	12	100.0%	0	0.0%	0	0.0%
Grad. Busn. Admn.	0	0.0%	0	0.0%	0	0.0%	0	0.0%	0	0.0%	12	100.0%	0	0.0%
Grad. Educ. Tech.	0	0.0%	0	0.0%	0	0.0%	0	0.0%	0	0.0%	0	0.0%	43	100.0%
	473		283		54		23		12		12		43	



By School and Major (with Graduate Programs)

SAB	Accounting	31	3.4%
	Business Administration	126	14.0%
	Economics	8	0.9%
	Information Systems	71	7.9%
	International Business	23	2.6%
AIS	American Studies	6	0.7%
	History	14	1.6%
	International Studies	8	0.9%
	Law and Society	15	1.7%
	Literature	45	5.0%
	Political Science	14	1.6%
CA	Communication Arts	118	13.1%
	Contemporary Arts	9	1.0%
	Fine Arts	37	4.1%
SSHS	Environmental Studies	1	0.1%
	History	1	0.1%
	Law and Society	6	0.7%
	Psychology	94	10.4%
	Social Science	23	2.6%
	Social Work	23	2.6%
	Sociology	21	2.3%
TAS	Biochemistry	6	0.7%
	Biology	15	1.7%
	Chemistry	5	0.6%
	Computer Science	9	1.0%
	Environmental Science	3	0.3%
	Environmental Studies	15	1.7%
	Mathematics	4	0.4%
	Nursing	54	6.0%
	Psychology	28	3.1%
MASTERS	Liberal Studies	12	1.3%
	Business Administration	12	1.3%
	Educational Technology	43	4.8%

DEGREES AWARDED BY SCHOOL AND MAJOR/PROGRAM



By Major or Graduate Program

Accounting	31	3.4%
American Studies	6	0.7%
Biochemistry	6	0.7%
Biology	15	1.7%
Business Administration	126	14.0%
Chemistry	5	0.6%
Communication Arts	118	13.1%
Computer Science	9	1.0%
Contemporary Arts	9	1.0%
Economics [1]	8	0.9%
Environmental Science	3	0.3%
Environmental Studies [2]	16	1.8%
Fine Arts	37	4.1%
History [3]	15	1.7%
Information Systems	71	7.9%
International Business	23	2.6%
International Studies	8	0.9%
Law and Society [4]	21	2.3%
Literature	45	5.0%
Masters in Liberal Studies	12	1.3%
Masters in Business Administration	12	1.3%
Masters in Educational Technology	43	4.8%
Mathematics	4	0.4%
Nursing	54	6.0%
Political Science [5]	14	1.6%
Psychology [6]	122	13.6%
Social Science	23	2.6%
Social Work	23	2.6%
Sociology	21	2.3%

[1] Includes students from SAB and SSHS.

[2] Includes students from SSHS and TAS.

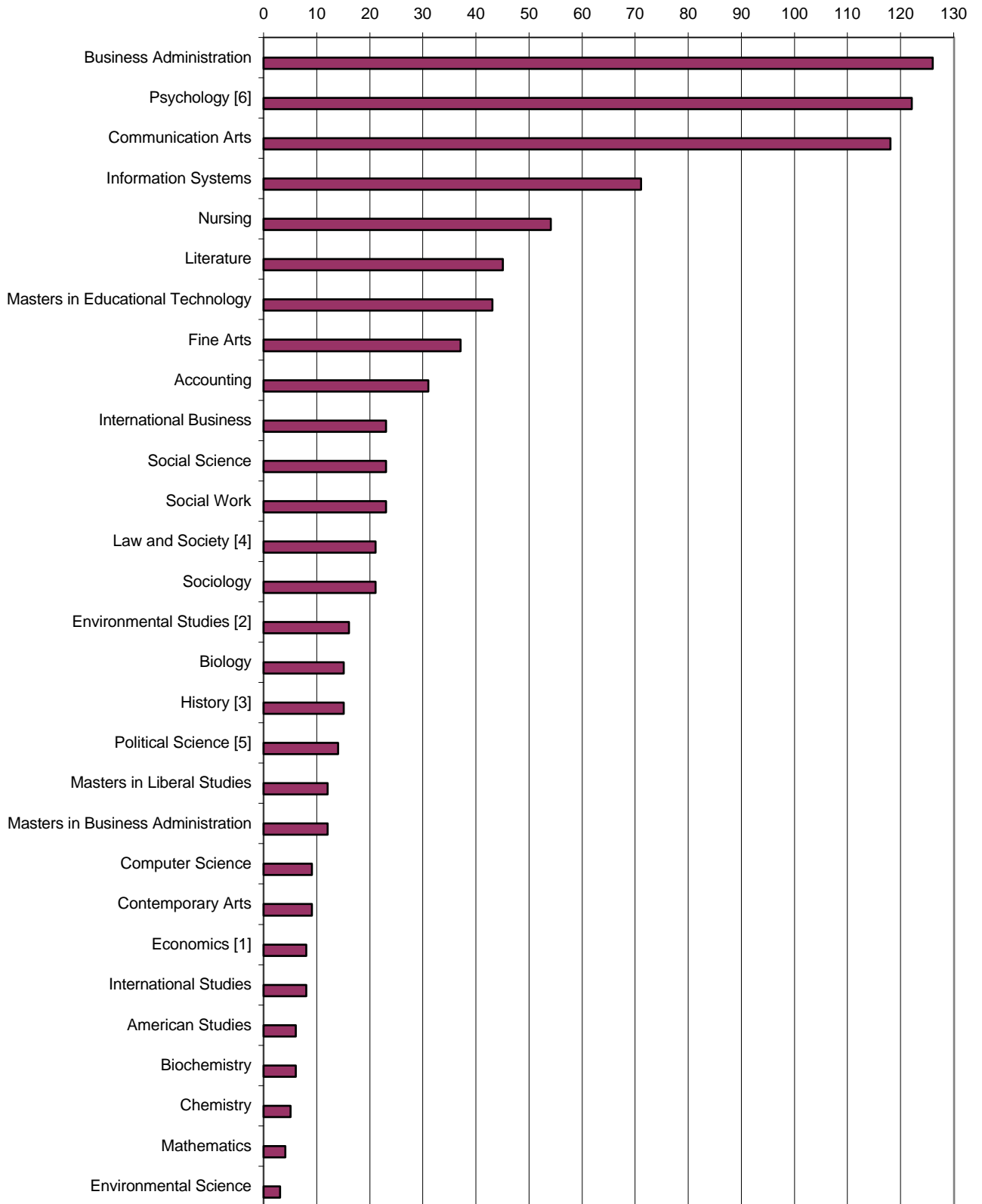
[3] Includes students from AIS and SSHS.

[4] Includes students from AIS and SSHS.

[5] Includes students from AIS and SSHS.

[6] Includes students from SSHS and TAS.

DEGREES AWARDED BY MAJOR

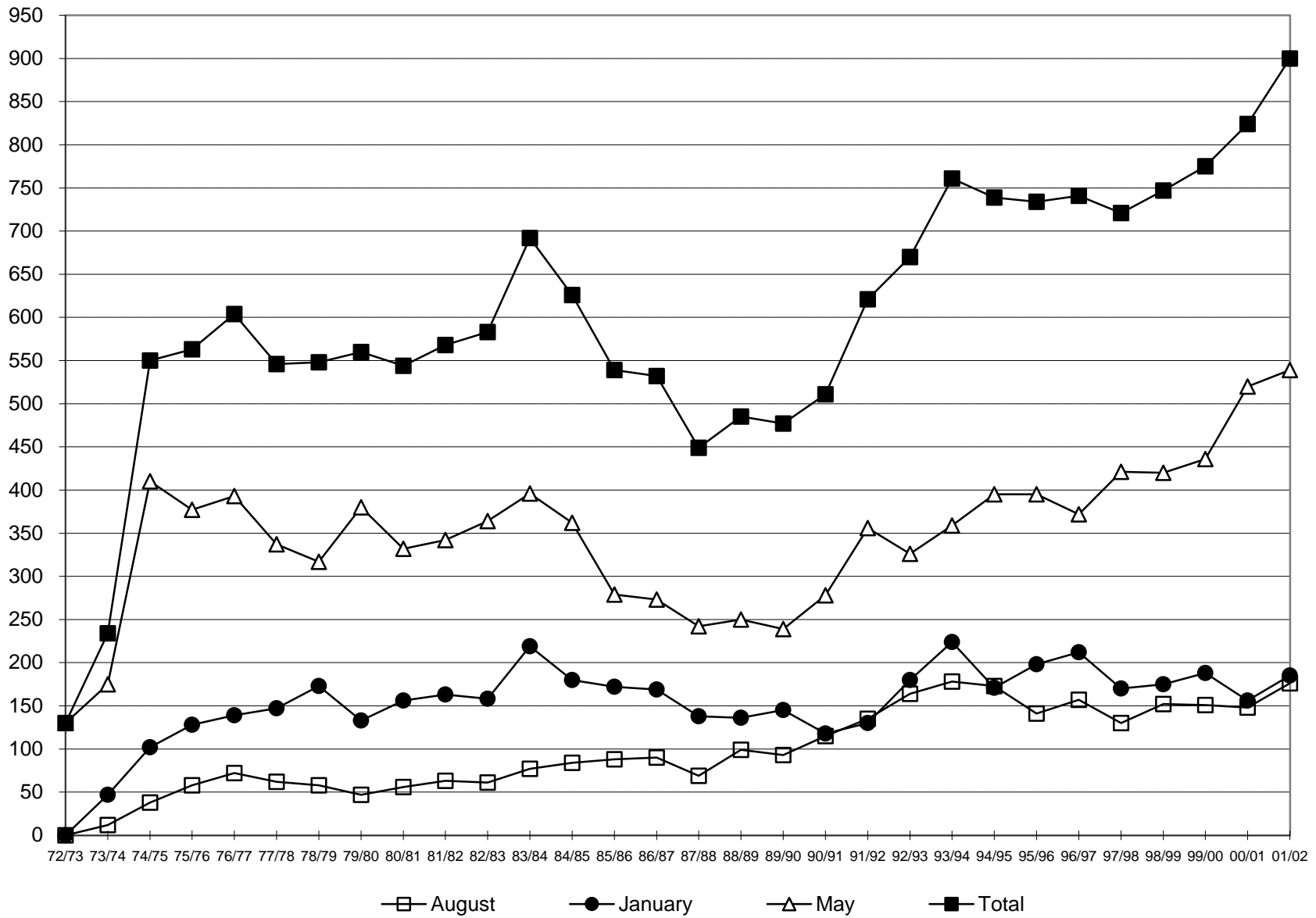


TOTAL DEGREES AWARDED, 1972-73 TO 2001-02*

Year	AUGUST DEGREES			JANUARY DEGREES			MAY DEGREES			TOTAL FISCAL YEAR DEGREES			CUMULATIVE DEGREES AWARDED SINCE 1972-73
	Number of Degrees Awarded	Percent Change From Previous August	Cumulative Percent Change From Aug. 1973	Number of Degrees Awarded	Percent Change From Previous January	Cumulative Percent Change From Jan. 1974	Number of Degrees Awarded	Percent Change From Previous May	Cumulative Percent Change From May 1973	Number of Degrees Awarded	Percent Change From Previous Fiscal Year	Cumulative Percent Change From 1972-73	
1972-73	N/A	N/A	N/A	N/A	N/A	N/A	130	N/A	0.0%	130	N/A	0.0%	130
1973-74	12	N/A	0.0%	47	N/A	0.0%	175	34.6%	34.6%	234	80.0%	80.0%	364
1974-75	38	216.7%	216.7%	102	117.0%	117.0%	410	134.3%	215.4%	550	135.0%	323.1%	914
1975-76	58	52.6%	383.3%	128	25.5%	172.3%	377	-8.0%	190.0%	563	2.4%	333.1%	1,477
1976-77	72	24.1%	500.0%	139	8.6%	195.7%	393	4.2%	202.3%	604	7.3%	364.6%	2,081
1977-78	62	-13.9%	416.7%	147	5.8%	212.8%	337	-14.2%	159.2%	546	-9.6%	320.0%	2,627
1978-79	58	-6.5%	383.3%	173	17.7%	268.1%	317	-5.9%	143.8%	548	0.4%	321.5%	3,175
1979-80	47	-19.0%	291.7%	133	-23.1%	183.0%	380	19.9%	192.3%	560	2.2%	330.8%	3,735
1980-81	56	19.1%	366.7%	156	17.3%	231.9%	332	-12.6%	155.4%	544	-2.9%	318.5%	4,279
1981-82	63	12.5%	425.0%	163	4.5%	246.8%	342	3.0%	163.1%	568	4.4%	336.9%	4,847
1982-83	61	-3.2%	408.3%	158	-3.1%	236.2%	364	6.4%	180.0%	583	2.6%	348.5%	5,430
1983-84	77	26.2%	541.7%	219	38.6%	366.0%	396	8.8%	204.6%	692	18.7%	432.3%	6,122
1984-85	84	9.1%	600.0%	180	-17.8%	283.0%	362	-8.6%	178.5%	626	-9.5%	381.5%	6,748
1985-86	88	4.8%	633.3%	172	-4.4%	266.0%	279	-22.9%	114.6%	539	-13.9%	314.6%	7,287
1986-87	90	2.3%	650.0%	169	-1.7%	259.6%	273	-2.2%	110.0%	532	-1.3%	309.2%	7,819
1987-88	69	-23.3%	475.0%	138	-18.3%	193.6%	242	-11.4%	86.2%	449	-15.6%	245.4%	8,268
1988-89	99	43.5%	725.0%	136	-1.4%	189.4%	250	3.3%	92.3%	485	8.0%	273.1%	8,753
1989-90	93	-6.1%	675.0%	145	6.6%	208.5%	239	-4.4%	83.8%	477	-1.6%	266.9%	9,230
1990-91	115	23.7%	858.3%	118	-18.6%	151.1%	278	16.3%	113.8%	511	7.1%	293.1%	9,741
1991-92	135	17.4%	1025.0%	130	10.2%	176.6%	356	28.1%	173.8%	621	21.5%	377.7%	10,362
1992-93	164	21.5%	1266.7%	180	38.5%	283.0%	326	-8.4%	150.8%	670	7.9%	415.4%	11,032
1993-94	178	8.5%	1383.3%	224	24.4%	376.6%	359	10.1%	176.2%	761	13.6%	485.4%	11,793
1994-95	173	-2.8%	1341.7%	171	-23.7%	263.8%	395	10.0%	203.8%	739	-2.9%	468.5%	12,532
1995-96	141	-18.5%	1075.0%	198	15.8%	321.3%	395	0.0%	203.8%	734	-0.7%	464.6%	13,266
1996-97	157	11.3%	1208.3%	212	7.1%	351.1%	372	-5.8%	186.2%	741	1.0%	470.0%	14,007
1997-98	130	-17.2%	983.3%	170	-19.8%	261.7%	421	13.2%	223.8%	721	-2.7%	454.6%	14,728
1998-99	152	16.9%	1166.7%	175	2.9%	272.3%	420	-0.2%	223.1%	747	3.6%	474.6%	15,475
1999-00	151	-0.7%	1158.3%	188	7.4%	300.0%	436	3.8%	235.4%	775	3.7%	496.2%	16,250
2000-01	148	-2.0%	1133.3%	156	-17.0%	231.9%	520	19.3%	300.0%	824	6.3%	533.8%	17,074
2001-02	176	18.9%	1366.7%	185	18.6%	293.6%	539	3.7%	314.6%	900	9.2%	592.3%	17,974

* Degrees are reported on a fiscal year basis. For example, 2001-02 graduates include degree recipients from August 2001, January 2002, and May 2002.

DEGREES AWARDED BY FISCAL YEAR, 1972-73 TO 2001-02



DEGREES AWARDED BY AGE, 1997-98 TO 2001-02

Bachelor's	1997-98		1998-99		1999-00		2000-01		2001-02		Pct. Change 97/98 to 01/02	Pct. Change 00/01 to 01/02
	No.	Pct.	No.	Pct.	No.	Pct.	No.	Pct.	No.	Pct.		
Less Than 20	0	0.0%	0	0.0%	0	0.0%	1	0.1%	0	0.0%	N/A	N/A
20 to 24	339	47.4%	318	44.7%	356	48.6%	422	54.8%	492	59.1%	45.1%	16.6%
25 to 29	200	28.0%	197	27.7%	189	25.8%	180	23.4%	169	20.3%	-15.5%	-6.1%
30 to 39	97	13.6%	121	17.0%	115	15.7%	96	12.5%	91	10.9%	-6.2%	-5.2%
40 and Over	79	11.0%	76	10.7%	72	9.8%	71	9.2%	81	9.7%	2.5%	14.1%
Total	715		712		732		770		833		16.5%	8.2%

Master's	1997-98		1998-99		1999-00		2000-01		2001-02		Pct. Change 97/98 to 01/02	Pct. Change 00/01 to 01/02
	No.	Pct.	No.	Pct.	No.	Pct.	No.	Pct.	No.	Pct.		
Less Than 20	0	0.0%	0	0.0%	0	0.0%	0	0.0%	0	0.0%	N/A	N/A
20 to 24	0	0.0%	0	0.0%	0	0.0%	0	0.0%	1	1.5%	N/A	N/A
25 to 29	0	0.0%	6	17.1%	3	7.0%	12	22.2%	19	28.4%	N/A	58.3%
30 to 39	0	0.0%	9	25.7%	11	25.6%	21	38.9%	27	40.3%	N/A	28.6%
40 and Over	6	100.0%	20	57.1%	29	67.4%	21	38.9%	20	29.9%	233.3%	-4.8%
Total	6		35		43		54		67		1016.7%	24.1%

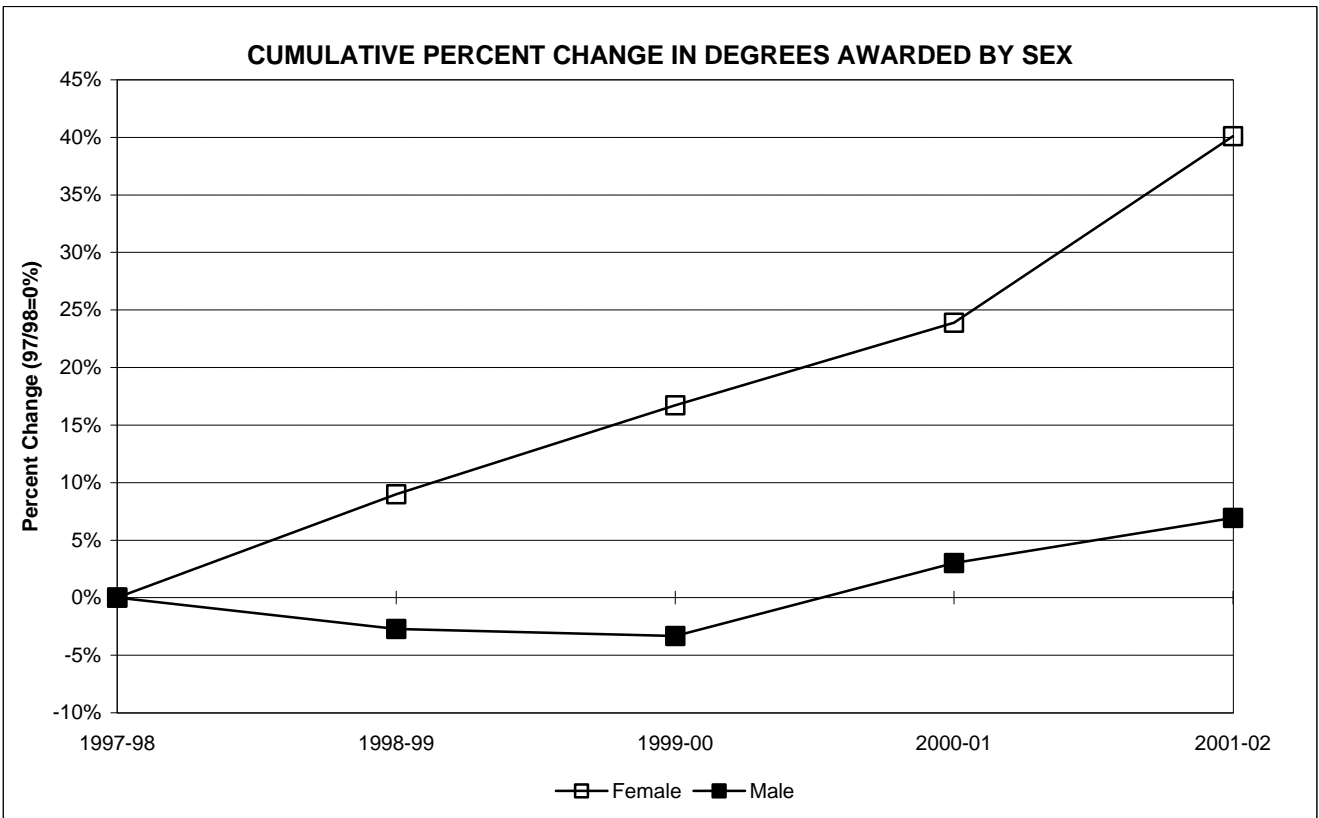
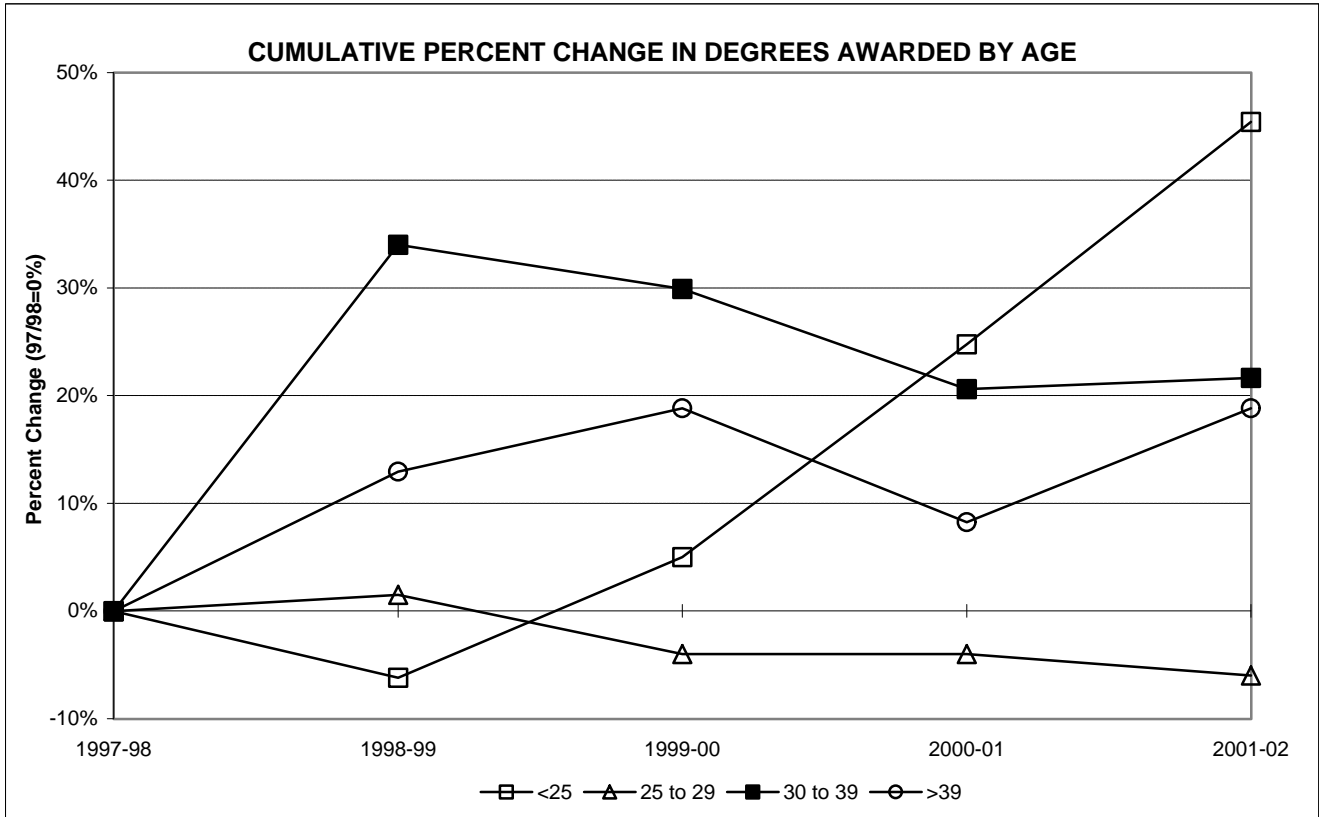
Total	1997-98		1998-99		1999-00		2000-01		2001-02		Pct. Change 97/98 to 01/02	Pct. Change 00/01 to 01/02
	No.	Pct.	No.	Pct.	No.	Pct.	No.	Pct.	No.	Pct.		
Less Than 20	0	0.0%	0	0.0%	0	0.0%	1	0.1%	0	0.0%	N/A	N/A
20 to 24	339	47.0%	318	42.6%	356	45.9%	422	51.2%	493	54.8%	45.4%	16.8%
25 to 29	200	27.7%	203	27.2%	192	24.8%	192	23.3%	188	20.9%	-6.0%	-2.1%
30 to 39	97	13.5%	130	17.4%	126	16.3%	117	14.2%	118	13.1%	21.6%	0.9%
40 and Over	85	11.8%	96	12.9%	101	13.0%	92	11.2%	101	11.2%	18.8%	9.8%
Total	721		747		775		824		900		24.8%	9.2%

DEGREES AWARDED BY SEX, 1997-98 TO 2001-02

Bachelor's	1997-98		1998-99		1999-00		2000-01		2001-02		Pct. Change 97/98 to 01/02	Pct. Change 00/01 to 01/02
	No.	Pct.	No.	Pct.	No.	Pct.	No.	Pct.	No.	Pct.		
Female	383	53.6%	401	56.3%	419	57.2%	442	57.4%	502	60.3%	31.1%	13.6%
Male	332	46.4%	311	43.7%	313	42.8%	328	42.6%	331	39.7%	-0.3%	0.9%
Total	715		712		732		770		833		16.5%	8.2%

Master's	1997-98		1998-99		1999-00		2000-01		2001-02		Pct. Change 97/98 to 01/02	Pct. Change 00/01 to 01/02
	No.	Pct.	No.	Pct.	No.	Pct.	No.	Pct.	No.	Pct.		
Female	6	100.0%	23	65.7%	35	81.4%	40	74.1%	43	64.2%	616.7%	7.5%
Male	0	0.0%	12	34.3%	8	18.6%	14	25.9%	24	35.8%	N/A	71.4%
Total	6		35		43		54		67		1016.7%	24.1%

Total	1997-98		1998-99		1999-00		2000-01		2001-02		Pct. Change 97/98 to 01/02	Pct. Change 00/01 to 01/02
	No.	Pct.	No.	Pct.	No.	Pct.	No.	Pct.	No.	Pct.		
Female	389	54.0%	424	56.8%	454	58.6%	482	58.5%	545	60.6%	40.1%	13.1%
Male	332	46.0%	323	43.2%	321	41.4%	342	41.5%	355	39.4%	6.9%	3.8%
Total	721		747		775		824		900		24.8%	9.2%



DEGREES AWARDED BY ETHNICITY, 1997-98 TO 2001-02

Bachelor's	1997-98		1998-99		1999-00		2000-01		2001-02		Pct. Change 97/98 to 01/02	Pct. Change 00/01 to 01/02
	No.	Pct.	No.	Pct.	No.	Pct.	No.	Pct.	No.	Pct.		
American Indian/Nat. Al.	1	0.1%	0	0.0%	2	0.3%	0	0.0%	1	0.1%	0.0%	N/A
Asian/Pacific Islander	37	5.2%	51	7.2%	50	6.8%	53	6.9%	56	6.7%	51.4%	5.7%
Black, non-Hispanic	44	6.2%	53	7.4%	55	7.5%	72	9.4%	60	7.2%	36.4%	-16.7%
Hispanic	32	4.5%	37	5.2%	37	5.1%	50	6.5%	62	7.4%	93.8%	24.0%
White, non-Hispanic	601	84.1%	571	80.2%	588	80.3%	595	77.3%	654	78.5%	8.8%	9.9%
Total	715		712		732		770		833		16.5%	8.2%

Master's	1997-98		1998-99		1999-00		2000-01		2001-02		Pct. Change 97/98 to 01/02	Pct. Change 00/01 to 01/02
	No.	Pct.	No.	Pct.	No.	Pct.	No.	Pct.	No.	Pct.		
American Indian/Nat. Al.	0	0.0%	0	0.0%	0	0.0%	0	0.0%	1	1.5%	N/A	N/A
Asian/Pacific Islander	0	0.0%	2	5.7%	2	4.7%	2	3.7%	1	1.5%	N/A	-50.0%
Black, non-Hispanic	0	0.0%	3	8.6%	2	4.7%	3	5.6%	13	19.4%	N/A	333.3%
Hispanic	0	0.0%	0	0.0%	0	0.0%	0	0.0%	1	1.5%	N/A	N/A
White, non-Hispanic	6	100.0%	30	85.7%	39	90.7%	49	90.7%	51	76.1%	750.0%	4.1%
Total	6		35		43		54		67		1016.7%	24.1%

Total	1997-98		1998-99		1999-00		2000-01		2001-02		Pct. Change 97/98 to 01/02	Pct. Change 00/01 to 01/02
	No.	Pct.	No.	Pct.	No.	Pct.	No.	Pct.	No.	Pct.		
American Indian/Nat. Al.	1	0.1%	0	0.0%	2	0.3%	0	0.0%	2	0.2%	100.0%	N/A
Asian/Pacific Islander	37	5.1%	53	7.1%	52	6.7%	55	6.7%	57	6.3%	54.1%	3.6%
Black, non-Hispanic	44	6.1%	56	7.5%	57	7.4%	75	9.1%	73	8.1%	65.9%	-2.7%
Hispanic	32	4.4%	37	5.0%	37	4.8%	50	6.1%	63	7.0%	96.9%	26.0%
White, non-Hispanic	607	84.2%	601	80.5%	627	80.9%	644	78.2%	705	78.3%	16.1%	9.5%
Total	721		747		775		824		900		24.8%	9.2%



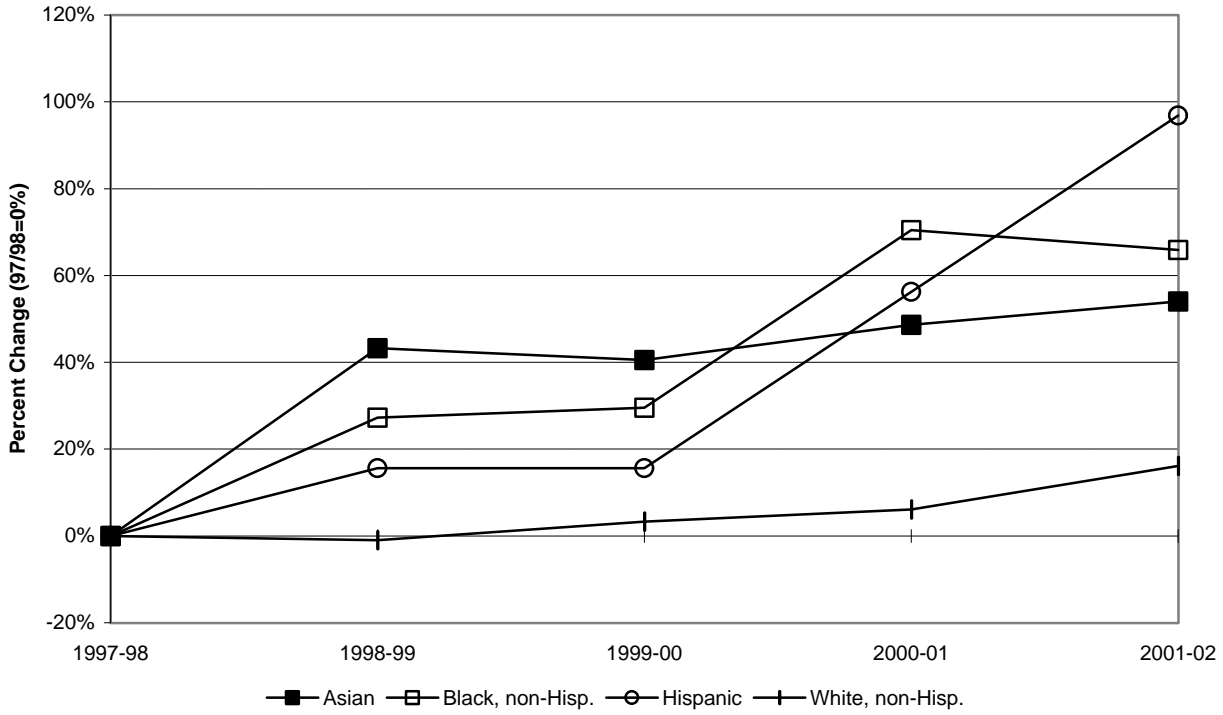
DEGREES AWARDED BY INITIAL ADMISSIONS TYPE, 1997-98 TO 2001-02

Bachelor's	1997-98		1998-99		1999-00		2000-01		2001-02		Pct. Change 97/98 to 01/02	Pct. Change 00/01 to 01/02
	No.	Pct.	No.	Pct.	No.	Pct.	No.	Pct.	No.	Pct.		
Regular	259	36.2%	209	29.4%	254	34.7%	290	37.7%	326	39.1%	25.9%	12.4%
EOF non-Transfer	23	3.2%	25	3.5%	28	3.8%	46	6.0%	49	5.9%	113.0%	6.5%
EOF Transfer	0	0.0%	2	0.3%	7	1.0%	11	1.4%	8	1.0%	N/A	-27.3%
Special	17	2.4%	26	3.7%	19	2.6%	28	3.6%	29	3.5%	70.6%	3.6%
Transfer	416	58.2%	450	63.2%	424	57.9%	395	51.3%	421	50.5%	1.2%	6.6%
Total	715		712		732		770		833		16.5%	8.2%

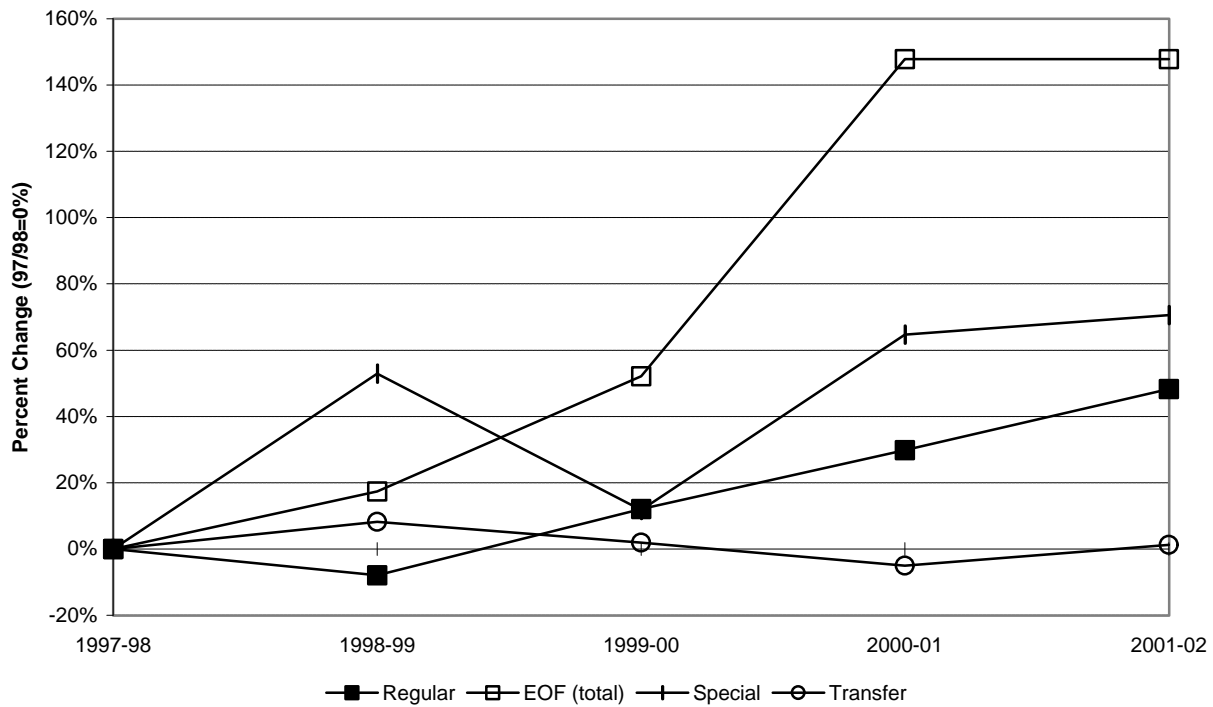
Master's	1997-98		1998-99		1999-00		2000-01		2001-02		Pct. Change 97/98 to 01/02	Pct. Change 00/01 to 01/02
	No.	Pct.	No.	Pct.	No.	Pct.	No.	Pct.	No.	Pct.		
Regular	6	100.0%	35	100.0%	43	100.0%	54	100.0%	67	100.0%	1016.7%	24.1%
EOF non-Transfer	0	0.0%	0	0.0%	0	0.0%	0	0.0%	0	0.0%	N/A	N/A
EOF Transfer	0	0.0%	0	0.0%	0	0.0%	0	0.0%	0	0.0%	N/A	N/A
Special	0	0.0%	0	0.0%	0	0.0%	0	0.0%	0	0.0%	N/A	N/A
Transfer	0	0.0%	0	0.0%	0	0.0%	0	0.0%	0	0.0%	N/A	N/A
Total	6		35		43		54		67		1016.7%	24.1%

Total	1997-98		1998-99		1999-00		2000-01		2001-02		Pct. Change 97/98 to 01/02	Pct. Change 00/01 to 01/02
	No.	Pct.	No.	Pct.	No.	Pct.	No.	Pct.	No.	Pct.		
Regular	265	36.8%	244	32.7%	297	38.3%	344	41.7%	393	43.7%	48.3%	14.2%
EOF non-Transfer	23	3.2%	25	3.3%	28	3.6%	46	5.6%	49	5.4%	113.0%	6.5%
EOF Transfer	0	0.0%	2	0.3%	7	0.9%	11	1.3%	8	0.9%	N/A	-27.3%
Special	17	2.4%	26	3.5%	19	2.5%	28	3.4%	29	3.2%	70.6%	3.6%
Transfer	416	57.7%	450	60.2%	424	54.7%	395	47.9%	421	46.8%	1.2%	6.6%
Total	721		747		775		824		900		24.8%	9.2%

CUMULATIVE PERCENT CHANGE IN DEGREES AWARDED BY ETHNICITY



CUMULATIVE PCT. CHANGE IN DEGREES AWARDED BY INITIAL ADMIT TYPE



DEGREES AWARDED BY ETHNICITY AND CITIZENSHIP, 1997-98 TO 2001-02

Bachelor's	1997-98		1998-99		1999-00		2000-01		2001-02		Pct. Change 97/98 to 01/02	Pct. Change 00/01 to 01/02
	No.	Pct.	No.	Pct.	No.	Pct.	No.	Pct.	No.	Pct.		
American Indian/Nat. Al.	1	0.1%	0	0.0%	2	0.3%	0	0.0%	1	0.1%	0.0%	N/A
Asian/Pacific Islander	24	3.4%	30	4.2%	30	4.1%	31	4.0%	37	4.4%	54.2%	19.4%
Black, non-Hispanic	40	5.6%	49	6.9%	50	6.8%	64	8.3%	56	6.7%	40.0%	-12.5%
Hispanic	31	4.3%	36	5.1%	36	4.9%	50	6.5%	60	7.2%	93.5%	20.0%
White, non-Hispanic	588	82.2%	552	77.5%	570	77.9%	582	75.6%	640	76.8%	8.8%	10.0%
Nonresident Alien	31	4.3%	45	6.3%	44	6.0%	43	5.6%	39	4.7%	25.8%	-9.3%
Total	715		712		732		770		833		16.5%	8.2%

Master's	1997-98		1998-99		1999-00		2000-01		2001-02		Pct. Change 97/98 to 01/02	Pct. Change 00/01 to 01/02
	No.	Pct.	No.	Pct.	No.	Pct.	No.	Pct.	No.	Pct.		
American Indian/Nat. Al.	0	0.0%	0	0.0%	0	0.0%	0	0.0%	1	1.5%	N/A	N/A
Asian/Pacific Islander	0	0.0%	1	2.9%	2	4.7%	2	3.7%	0	0.0%	N/A	-100.0%
Black, non-Hispanic	0	0.0%	3	8.6%	2	4.7%	3	5.6%	12	17.9%	N/A	300.0%
Hispanic	0	0.0%	0	0.0%	0	0.0%	0	0.0%	1	1.5%	N/A	N/A
White, non-Hispanic	6	100.0%	30	85.7%	39	90.7%	47	87.0%	51	76.1%	750.0%	8.5%
Nonresident Alien	0	0.0%	1	2.9%	0	0.0%	2	3.7%	2	3.0%	N/A	N/A
Total	6		35		43		54		67		1016.7%	24.1%

Total	1997-98		1998-99		1999-00		2000-01		2001-02		Pct. Change 97/98 to 01/02	Pct. Change 00/01 to 01/02
	No.	Pct.	No.	Pct.	No.	Pct.	No.	Pct.	No.	Pct.		
American Indian/Nat. Al.	1	0.1%	0	0.0%	2	0.3%	0	0.0%	2	0.2%	100.0%	N/A
Asian/Pacific Islander	24	3.3%	31	4.1%	32	4.1%	33	4.0%	37	4.1%	54.2%	12.1%
Black, non-Hispanic	40	5.5%	52	7.0%	52	6.7%	67	8.1%	68	7.6%	70.0%	1.5%
Hispanic	31	4.3%	36	4.8%	36	4.6%	50	6.1%	61	6.8%	96.8%	22.0%
White, non-Hispanic	594	82.4%	582	77.9%	609	78.6%	629	76.3%	691	76.8%	16.3%	9.9%
Nonresident Alien	31	4.3%	46	6.2%	44	5.7%	45	5.5%	41	4.6%	32.3%	-8.9%
Total	721		747		775		824		900		24.8%	9.2%

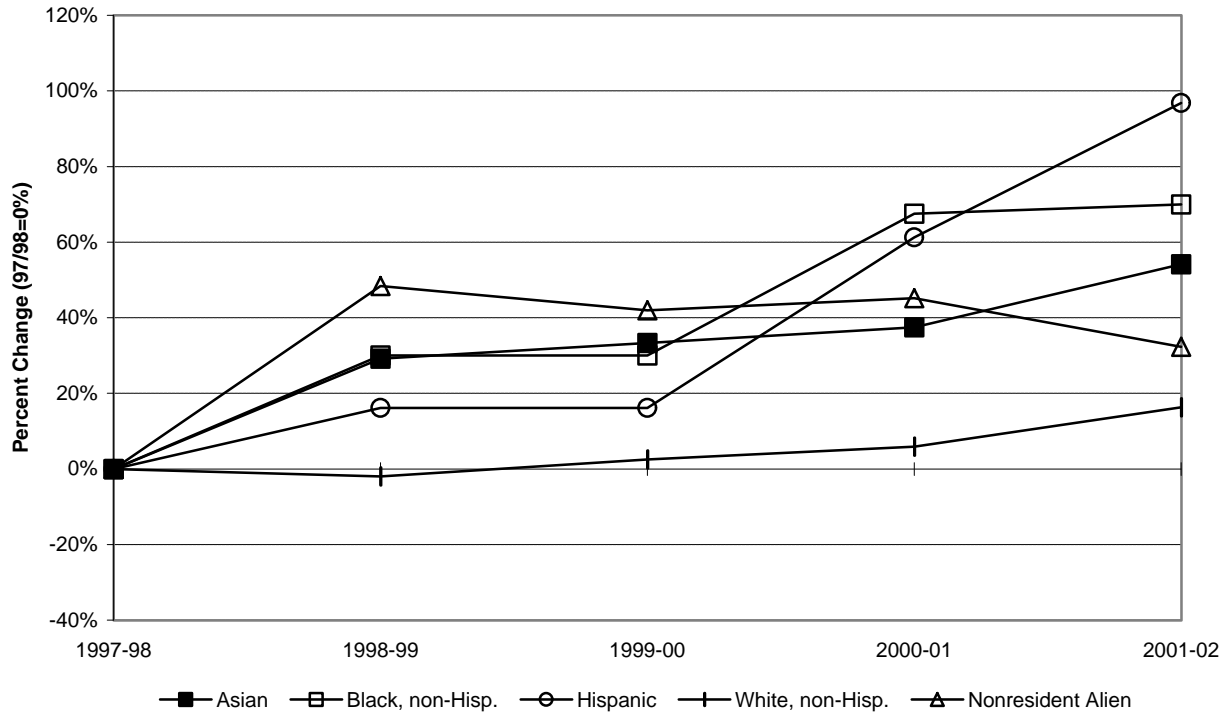
DEGREES AWARDED BY CITIZENSHIP, 1997-98 TO 2001-02

Bachelor's	1997-98		1998-99		1999-00		2000-01		2001-02		Pct. Change 97/98 to 01/02	Pct. Change 00/01 to 01/02
	No.	Pct.	No.	Pct.	No.	Pct.	No.	Pct.	No.	Pct.		
Citizen/Permanent Res.	684	95.7%	667	93.7%	688	94.0%	727	94.4%	762	91.5%	11.4%	4.8%
non-Citizen/non-Res.	31	4.3%	45	6.3%	44	6.0%	43	5.6%	71	8.5%	129.0%	65.1%
Total	715		712		732		770		833		16.5%	8.2%

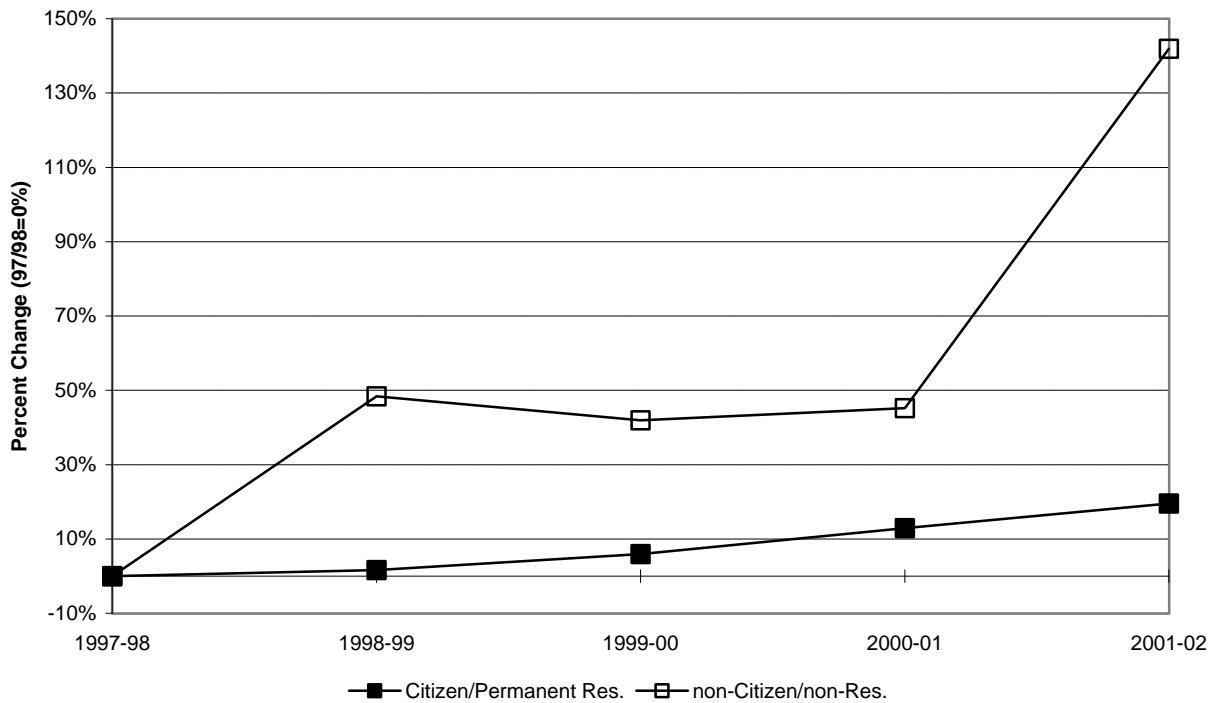
Master's	1997-98		1998-99		1999-00		2001-02		2001-02		Pct. Change 97/98 to 01/02	Pct. Change 00/01 to 01/02
	No.	Pct.	No.	Pct.	No.	Pct.	No.	Pct.	No.	Pct.		
Citizen/Permanent Res.	6	100.0%	34	97.1%	43	100.0%	52	96.3%	63	94.0%	950.0%	21.2%
non-Citizen/non-Res.	0	0.0%	1	2.9%	0	0.0%	2	3.7%	4	6.0%	N/A	N/A
Total	6		35		43		54		67		1016.7%	24.1%

Total	1997-98		1998-99		1999-00		2001-02		2001-02		Pct. Change 97/98 to 01/02	Pct. Change 00/01 to 01/02
	No.	Pct.	No.	Pct.	No.	Pct.	No.	Pct.	No.	Pct.		
Citizen/Permanent Res.	690	95.7%	701	93.8%	731	94.3%	779	94.5%	825	91.7%	19.6%	5.9%
non-Citizen/non-Res.	31	4.3%	46	6.2%	44	5.7%	45	5.5%	75	8.3%	141.9%	66.7%
Total	721		747		775		824		900		24.8%	9.2%

CUM. PCT. CHANGE IN DEGREES AWARDED BY ETHNICITY & CITIZENSHIP

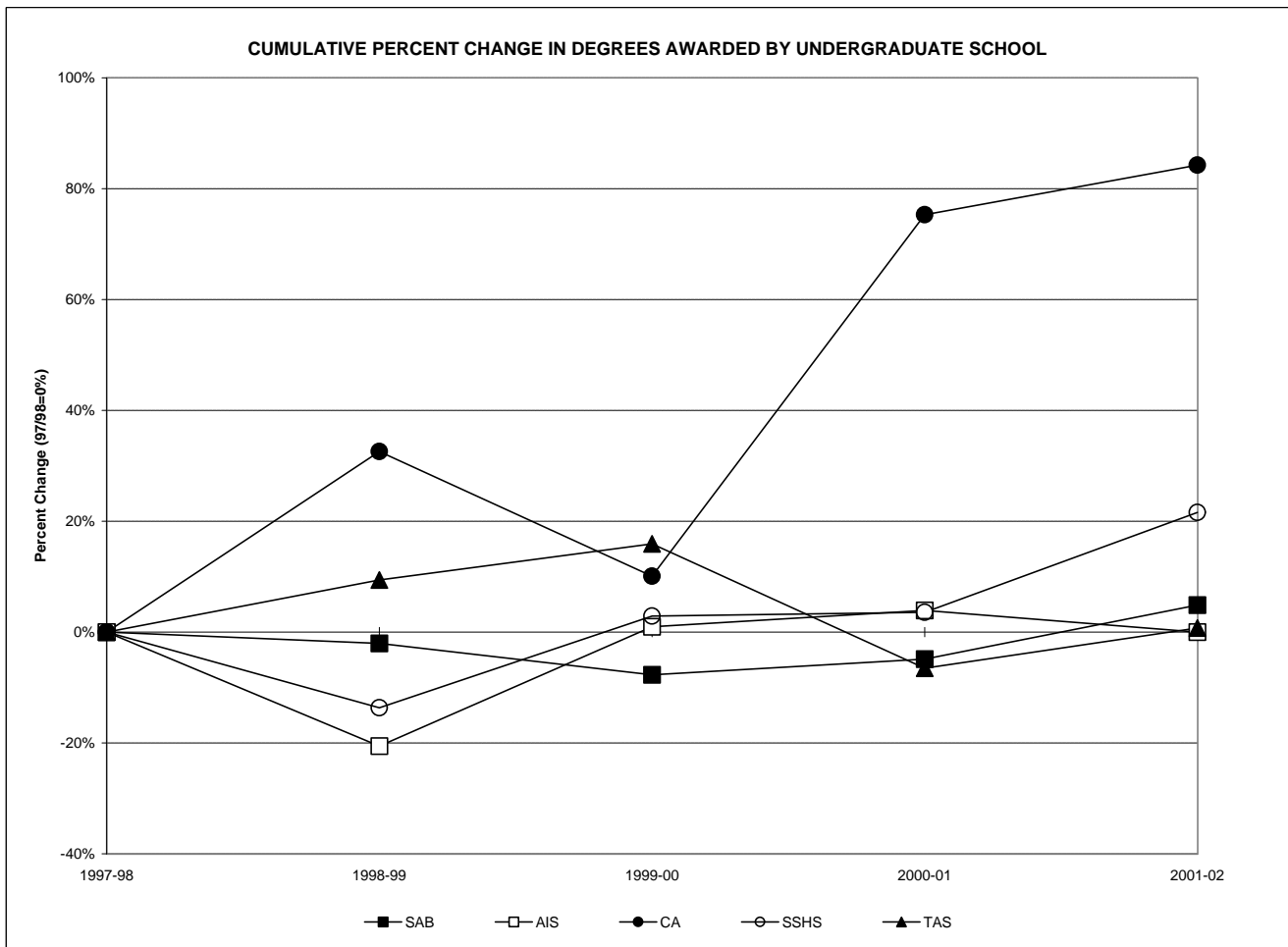


CUMULATIVE PERCENT CHANGE IN DEGREES AWARDED BY CITIZENSHIP



DEGREES AWARDED BY UNDERGRADUATE SCHOOL AND COMBINED GRADUATE PROGRAMS, 1997-98 TO 2001-02

Schools	1997-98		1998-99		1999-00		2000-01		2001-02		Percent Chg. 97/98 to 01/02	Percent Chg. 00/01 to 01/02
	No.	Pct.	No.	Pct.	No.	Pct.	No.	Pct.	No.	Pct.		
Admin. & Business	247	34.3%	242	32.4%	228	29.4%	235	28.5%	259	28.8%	4.9%	10.2%
Amer. & Int'l Studies	102	14.1%	81	10.8%	103	13.3%	106	12.9%	102	11.3%	0.0%	-3.8%
Contemporary Arts	89	12.3%	118	15.8%	98	12.6%	156	18.9%	164	18.2%	84.3%	5.1%
Soc. Sci. & Hum. Serv.	139	19.3%	120	16.1%	143	18.5%	144	17.5%	169	18.8%	21.6%	17.4%
Theoretical & App. Sci. Graduate Programs	138	19.1%	151	20.2%	160	20.6%	129	15.7%	139	15.4%	0.7%	7.8%
Graduate Programs	6	0.8%	35	4.7%	43	5.5%	54	6.6%	67	7.4%	1016.7%	24.1%
Total	721		747		775		824		900		24.8%	9.2%



DEGREES AWARDED BY SCHOOL AND MAJOR (WITH GRADUATE PROGRAMS), 1997-98 TO 2001-02

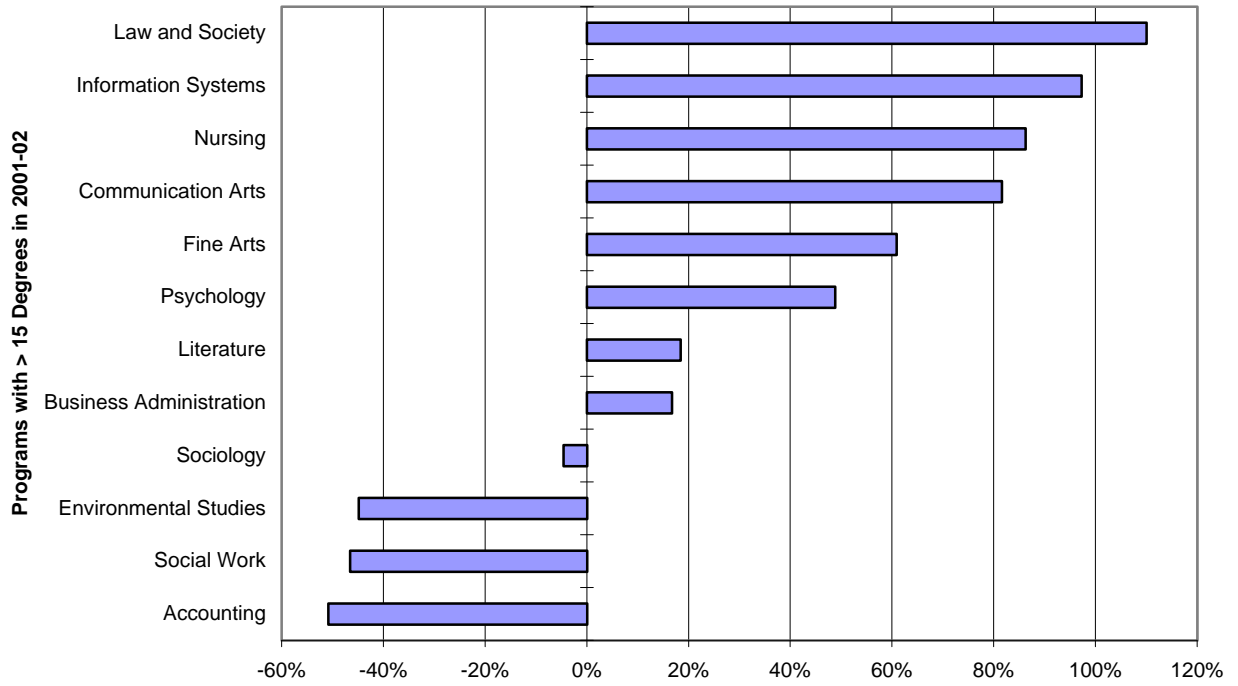
Majors/Programs	1997-98		1998-99		1999-00		2000-01		2001-02		Percent Chg. 97/98 to 01/02	Percent Chg. 00/01 to 01/02
	No.	Pct.	No.	Pct.	No.	Pct.	No.	Pct.	No.	Pct.		
Accounting	63	8.7%	56	7.5%	40	5.2%	21	2.5%	31	3.4%	-50.8%	47.6%
Business Administration	108	15.0%	107	14.3%	124	16.0%	119	14.4%	126	14.0%	16.7%	5.9%
Economics	17	2.4%	14	1.9%	11	1.4%	14	1.7%	8	0.9%	-52.9%	-42.9%
Information Systems	36	5.0%	39	5.2%	36	4.6%	58	7.0%	71	7.9%	97.2%	22.4%
International Business	23	3.2%	26	3.5%	17	2.2%	23	2.8%	23	2.6%	0.0%	0.0%
Sub-Total: SAB	247	34.3%	242	32.4%	228	29.4%	235	28.5%	259	28.8%	4.9%	10.2%
American Studies	4	0.6%	2	0.3%	4	0.5%	3	0.4%	6	0.7%	50.0%	100.0%
American/Int'l Studies	1	0.1%	0	0.0%	1	0.1%	1	0.1%	0	0.0%	-100.0%	-100.0%
History	25	3.5%	18	2.4%	18	2.3%	17	2.1%	14	1.6%	-44.0%	-17.6%
International Studies	9	1.2%	6	0.8%	10	1.3%	7	0.8%	8	0.9%	-11.1%	14.3%
Law and Society	8	1.1%	3	0.4%	9	1.2%	10	1.2%	15	1.7%	87.5%	50.0%
Literature	38	5.3%	33	4.4%	48	6.2%	53	6.4%	45	5.0%	18.4%	-15.1%
Philosophy	1	0.1%	0	0.0%	0	0.0%	0	0.0%	0	0.0%	-100.0%	N/A
Political Science	16	2.2%	19	2.5%	13	1.7%	15	1.8%	14	1.6%	-12.5%	-6.7%
Sub-Total: AIS	102	14.1%	81	10.8%	103	13.3%	106	12.9%	102	11.3%	0.0%	-3.8%
Communication Arts	65	9.0%	78	10.4%	62	8.0%	101	12.3%	118	13.1%	81.5%	16.8%
Contemporary Arts	1	0.1%	13	1.7%	9	1.2%	20	2.4%	9	1.0%	800.0%	-55.0%
Fine Arts	23	3.2%	27	3.6%	27	3.5%	35	4.2%	37	4.1%	60.9%	5.7%
Sub-Total: CA	89	12.3%	118	15.8%	98	12.6%	156	18.9%	164	18.2%	84.3%	5.1%
Economics	2	0.3%	2	0.3%	3	0.4%	2	0.2%	0	0.0%	-100.0%	-100.0%
Environmental Studies	2	0.3%	1	0.1%	1	0.1%	1	0.1%	1	0.1%	-50.0%	0.0%
History	0	0.0%	1	0.1%	2	0.3%	0	0.0%	1	0.1%	N/A	N/A
Law and Society	2	0.3%	6	0.8%	6	0.8%	5	0.6%	6	0.7%	200.0%	20.0%
Metropolitan Studies	12	1.7%	2	0.3%	0	0.0%	0	0.0%	0	0.0%	-100.0%	N/A
Political Science	0	0.0%	2	0.3%	1	0.1%	0	0.0%	0	0.0%	N/A	N/A
Psychology	56	7.8%	46	6.2%	47	6.1%	68	8.3%	94	10.4%	67.9%	38.2%
Social Science	--	--	9	1.2%	23	3.0%	22	2.7%	23	2.6%	N/A	4.5%
Social Work	43	6.0%	38	5.1%	40	5.2%	31	3.8%	23	2.6%	-46.5%	-25.8%
Sociology	22	3.1%	13	1.7%	20	2.6%	15	1.8%	21	2.3%	-4.5%	40.0%
Sub-Total: SSHS	139	19.3%	120	16.1%	143	18.5%	144	17.5%	169	18.8%	21.6%	17.4%
Biochemistry	--	--	--	--	4	0.5%	5	0.6%	6	0.7%	N/A	20.0%
Biology	25	3.5%	26	3.5%	20	2.6%	14	1.7%	15	1.7%	-40.0%	7.1%
Chemistry	2	0.3%	6	0.8%	3	0.4%	1	0.1%	5	0.6%	150.0%	400.0%
Clinical Lab. Sciences	0	0.0%	1	0.1%	0	0.0%	0	0.0%	0	0.0%	N/A	N/A
Computer Science	17	2.4%	8	1.1%	16	2.1%	11	1.3%	9	1.0%	-47.1%	-18.2%
Environmental Science	8	1.1%	6	0.8%	9	1.2%	4	0.5%	3	0.3%	-62.5%	-25.0%
Environmental Studies	27	3.7%	32	4.3%	22	2.8%	18	2.2%	15	1.7%	-44.4%	-16.7%
Mathematics	2	0.3%	5	0.7%	3	0.4%	8	1.0%	4	0.4%	100.0%	-50.0%
Nursing	29	4.0%	37	5.0%	46	5.9%	48	5.8%	54	6.0%	86.2%	12.5%
Physics	2	0.3%	3	0.4%	2	0.3%	2	0.2%	0	0.0%	-100.0%	-100.0%
Psychology	26	3.6%	27	3.6%	35	4.5%	18	2.2%	28	3.1%	7.7%	55.6%
Sub-Total: TAS	138	19.1%	151	20.2%	160	20.6%	129	15.7%	139	15.4%	0.7%	7.8%
M.A. in Liberal Studies	6	0.8%	14	1.9%	13	1.7%	2	0.2%	12	1.3%	100.0%	500.0%
M. in Business Admin.	--	--	--	--	--	--	8	1.0%	12	1.3%	N/A	50.0%
M.S. in Educational Tech.	--	--	21	2.8%	30	3.9%	44	5.3%	43	4.8%	N/A	-2.3%
Total	721		747		775		824		900		24.8%	9.2%

DEGREES AWARDED BY MAJOR (WITH GRADUATE PROGRAMS), 1997-98 TO 2001-02

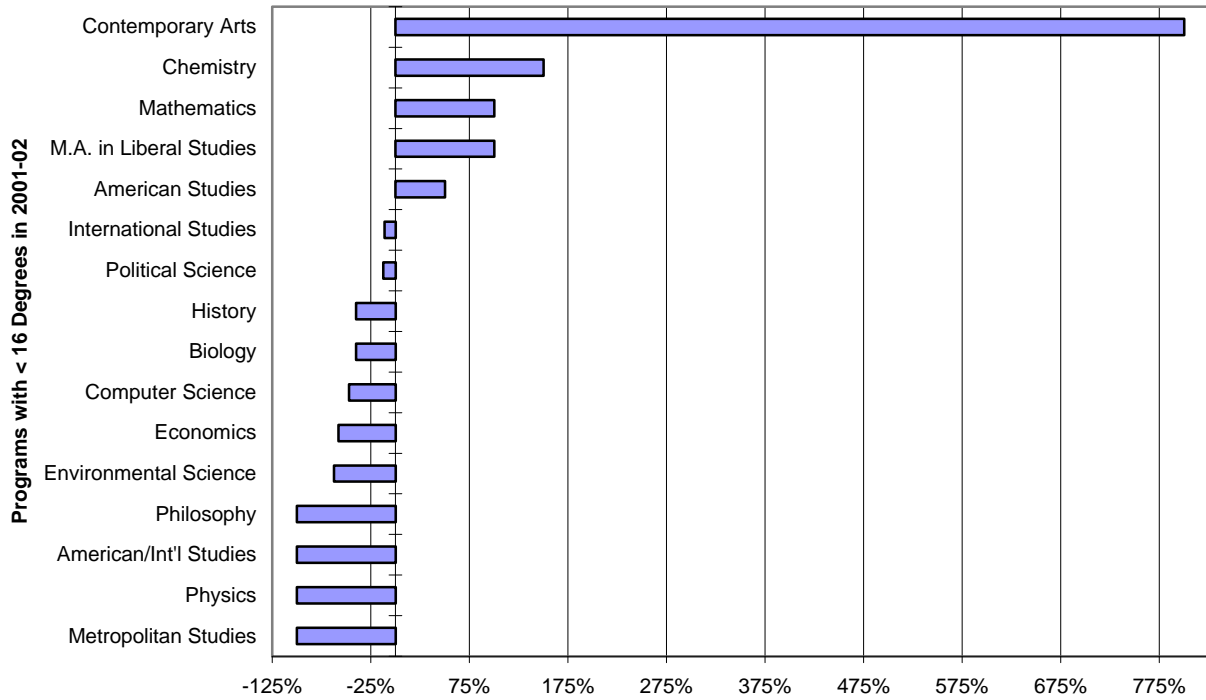
Major/Program	1997-98		1998-99		1999-00		2000-01		2001-02		Pct. Chg.	Pct. Chg.
	No.	Pct.	No.	Pct.	No.	Pct.	No.	Pct.	No.	Pct.	97/98 to 01/02	00/01 to 01/02
Accounting	63	8.7%	56	7.5%	40	5.2%	21	2.5%	31	3.4%	-50.8%	47.6%
American Studies	4	0.6%	2	0.3%	4	0.5%	3	0.4%	6	0.7%	50.0%	100.0%
American/Int'l Studies	1	0.1%	0	0.0%	1	0.1%	1	0.1%	0	0.0%	-100.0%	-100.0%
Biochemistry	--	--	--	--	4	0.5%	5	0.6%	6	0.7%	N/A	20.0%
Biology	25	3.5%	26	3.5%	20	2.6%	14	1.7%	15	1.7%	-40.0%	7.1%
Business Administration	108	15.0%	107	14.3%	124	16.0%	119	14.4%	126	14.0%	16.7%	5.9%
Chemistry	2	0.3%	6	0.8%	3	0.4%	1	0.1%	5	0.6%	150.0%	400.0%
Clinical Lab Sciences[1]	0	0.0%	1	0.1%	0	0.0%	0	0.0%	0	0.0%	N/A	N/A
Communication Arts	65	9.0%	78	10.4%	62	8.0%	101	12.3%	118	13.1%	81.5%	16.8%
Computer Science	17	2.4%	8	1.1%	16	2.1%	11	1.3%	9	1.0%	-47.1%	-18.2%
Contemporary Arts	1	0.1%	13	1.7%	9	1.2%	20	2.4%	9	1.0%	800.0%	-55.0%
Economics[2]	19	2.6%	16	2.1%	14	1.8%	16	1.9%	8	0.9%	-57.9%	-50.0%
Environmental Science	8	1.1%	6	0.8%	9	1.2%	4	0.5%	3	0.3%	-62.5%	-25.0%
Environmental Studies[3]	29	4.0%	33	4.4%	23	3.0%	19	2.3%	16	1.8%	-44.8%	-15.8%
Fine Arts	23	3.2%	27	3.6%	27	3.5%	35	4.2%	37	4.1%	60.9%	5.7%
History[4]	25	3.5%	19	2.5%	20	2.6%	17	2.1%	15	1.7%	-40.0%	-11.8%
Information Systems	36	5.0%	39	5.2%	36	4.6%	58	7.0%	71	7.9%	97.2%	22.4%
International Business	23	3.2%	26	3.5%	17	2.2%	23	2.8%	23	2.6%	0.0%	0.0%
International Studies	9	1.2%	6	0.8%	10	1.3%	7	0.8%	8	0.9%	-11.1%	14.3%
Law and Society[5]	10	1.4%	9	1.2%	15	1.9%	15	1.8%	21	2.3%	110.0%	40.0%
Literature	38	5.3%	33	4.4%	48	6.2%	53	6.4%	45	5.0%	18.4%	-15.1%
M.A. in Liberal Studies	6	0.8%	14	1.9%	13	1.7%	2	0.2%	12	1.3%	100.0%	500.0%
M. in Business Admin.	--	--	--	--	--	--	8	1.0%	12	1.3%	N/A	50.0%
M.S. in Ed. Technology	--	--	21	2.8%	30	3.9%	44	5.3%	43	4.8%	N/A	-2.3%
Mathematics	2	0.3%	5	0.7%	3	0.4%	8	1.0%	4	0.4%	100.0%	-50.0%
Metropolitan Studies	12	1.7%	2	0.3%	0	0.0%	0	0.0%	0	0.0%	-100.0%	N/A
Nursing	29	4.0%	37	5.0%	46	5.9%	48	5.8%	54	6.0%	86.2%	12.5%
Philosophy	1	0.1%	0	0.0%	0	0.0%	0	0.0%	0	0.0%	-100.0%	N/A
Physics	2	0.3%	3	0.4%	2	0.3%	2	0.2%	0	0.0%	-100.0%	-100.0%
Political Science[6]	16	2.2%	21	2.8%	14	1.8%	15	1.8%	14	1.6%	-12.5%	-6.7%
Psychology[7]	82	11.4%	73	9.8%	82	10.6%	86	10.4%	122	13.6%	48.8%	41.9%
Social Science	--	--	9	1.2%	23	3.0%	22	2.7%	23	2.6%	N/A	4.5%
Social Work	43	6.0%	38	5.1%	40	5.2%	31	3.8%	23	2.6%	-46.5%	-25.8%
Sociology	22	3.1%	13	1.7%	20	2.6%	15	1.8%	21	2.3%	-4.5%	40.0%
Total	721		747		775		824		900		24.8%	9.2%

- [1] Joint degree with UMDNJ.
- [2] Includes students from SAB and SSHS.
- [3] Includes students from SSHS and TAS.
- [4] Includes students from AIS and SSHS.
- [5] Includes students from AIS and SSHS.
- [6] Includes students from AIS and SSHS.
- [7] Includes students from SSHS and TAS.

PCT CHANGE (97/98 TO 01/02) IN DEGREES AWARDED BY PRIMARY MAJOR

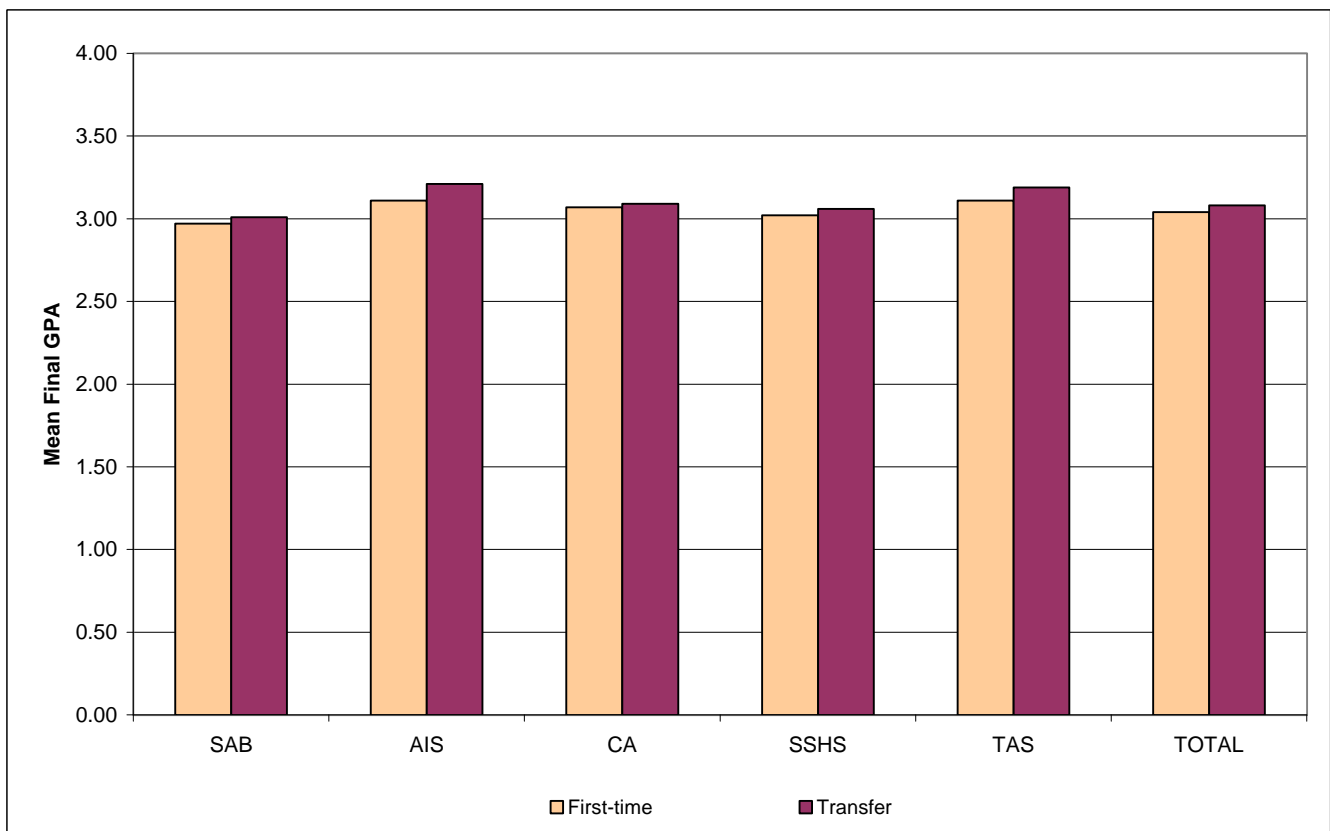


PCT CHANGE (97/98 TO 01/02) IN DEGREES AWARDED BY PRIMARY MAJOR



**MEAN FINAL GRADE POINT AVERAGES BY SCHOOL AND INITIAL ADMISSIONS TYPE
2001-02 DEGREE RECIPIENTS, UNDERGRADUATE ONLY**

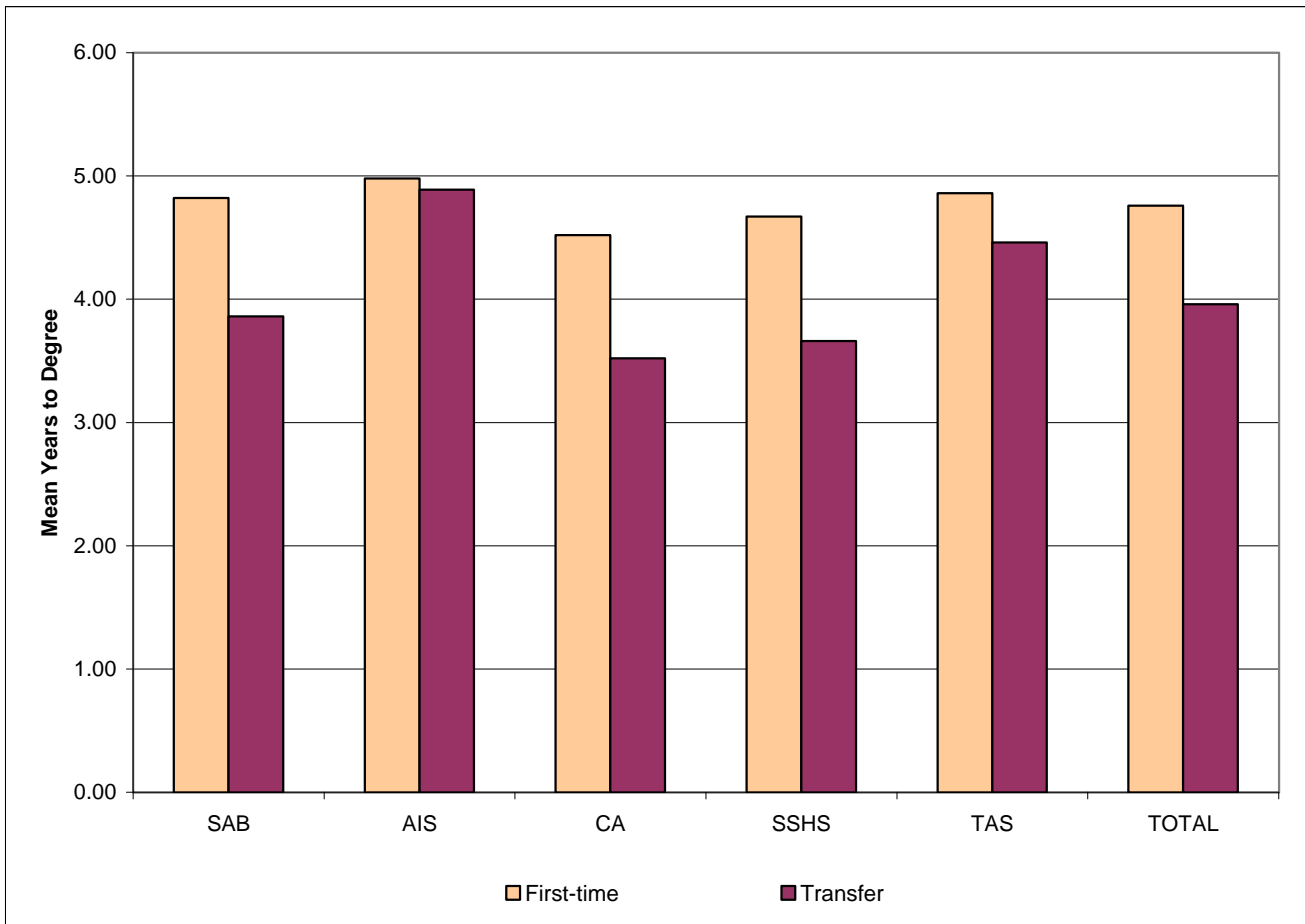
School	Mean Final Grade Point Average of First-time Students		Mean Final Grade Point Average of Transfer Students		Overall Mean GPA
	Number	Mean GPA	Number	Mean GPA	
Admin. & Business	115	2.97	144	3.01	2.99
Amer. & Int'l Studies	66	3.11	36	3.21	3.14
Contemporary Arts	88	3.07	76	3.09	3.08
Soc. Sci. & Hum. Serv.	78	3.02	91	3.06	3.04
Theoretical & App. Sci.	57	3.11	82	3.19	3.16
Overall	404	3.04	429	3.08	3.06



**MEAN TIME TO DEGREE BY SCHOOL AND INITIAL ADMISSIONS TYPE
FY2002 DEGREE RECIPIENTS, FALL UNDERGRAD ENTRANTS ONLY**

School	Mean Time to Degree (TTD) of First-time Students		Mean Time to Degree (TTD) of Transfer Students	
	Number	Mean Years to Degree*	Number	Mean Years to Degree*
Admin. & Business	99	4.82	95	3.86
Amer. & Int'l Studies	55	4.98	19	4.89
Contemporary Arts	70	4.52	51	3.52
Soc. Sci. & Hum. Serv.	68	4.67	65	3.66
Theoretical & App. Sci.	51	4.86	66	4.46
Overall	343	4.76	296	3.96

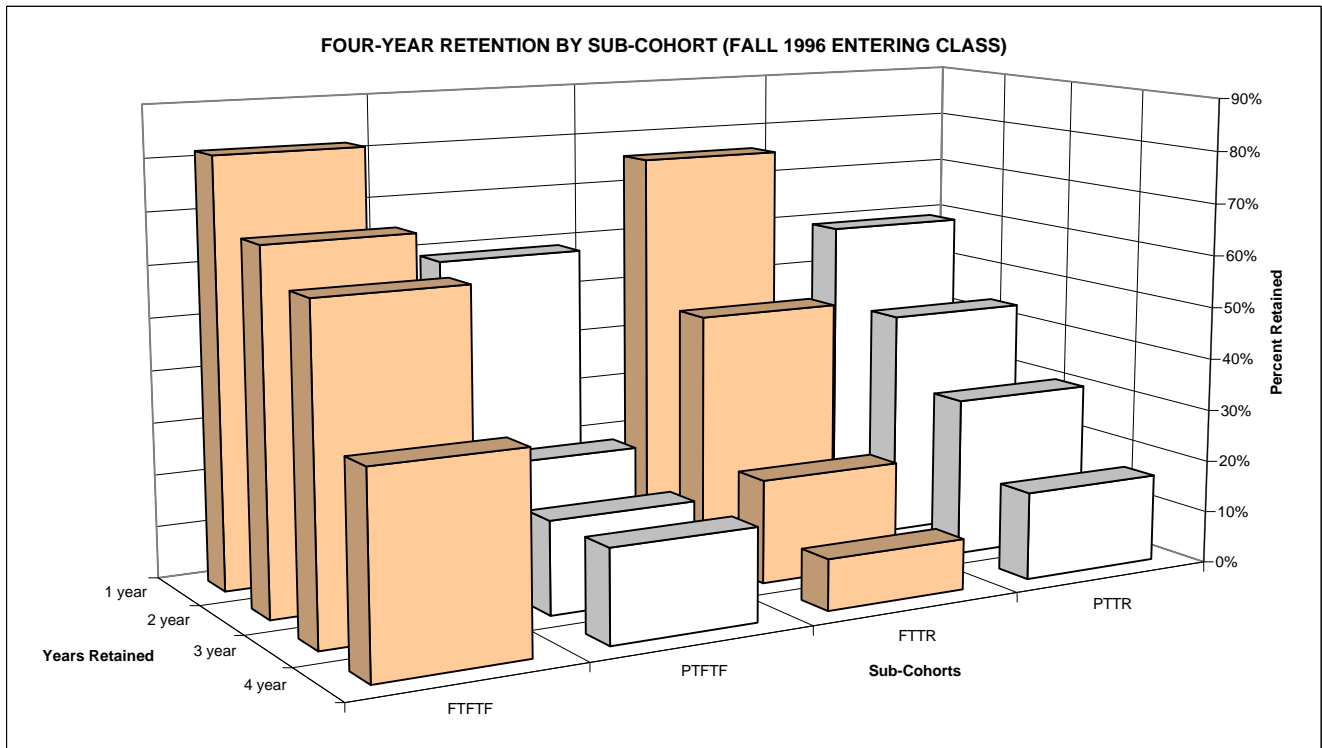
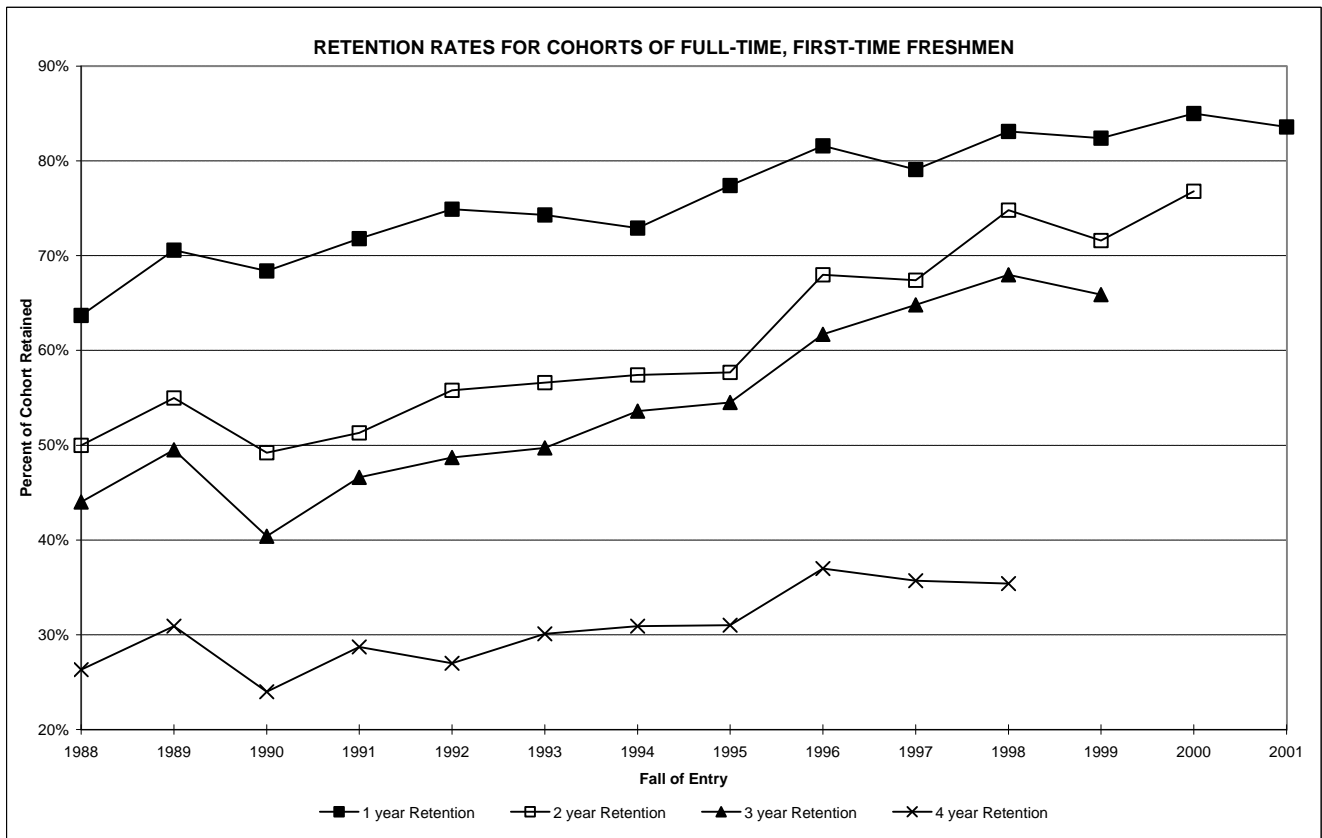
* Calculated from first matriculation date (fall entrants only). Ignores stop-out behavior.



NEW UNDERGRADUATE STUDENT COHORT RETENTION RATES

Fall of Entry	Sub-Cohorts*	Original Size	Retained One-Year		Retained Two-Years		Retained Three-Years		Retained Four-Years		Retained Five-Years		Retained Six-Years	
			#	Rate	#	Rate	#	Rate	#	Rate	#	Rate	#	Rate
1992	FTFTF	419	314	74.9%	234	55.8%	204	48.7%	113	27.0%	30	7.2%	13	3.1%
	PTFTF	38	21	55.3%	15	39.5%	17	44.7%	14	36.8%	8	21.1%	4	10.5%
	FTTR	358	276	77.1%	166	46.4%	75	20.9%	29	8.1%	10	2.8%	6	1.7%
	PTTR	217	137	63.1%	90	41.5%	56	25.8%	43	19.8%	24	11.1%	15	6.9%
	Total	1,032	748	72.5%	505	48.9%	352	34.1%	199	19.3%	72	7.0%	38	3.7%
1993	FTFTF	362	269	74.3%	205	56.6%	180	49.7%	109	30.1%	29	8.0%	13	3.6%
	PTFTF	24	12	50.0%	9	37.5%	7	29.2%	7	29.2%	4	16.7%	4	16.7%
	FTTR	379	282	74.4%	160	42.2%	78	20.6%	27	7.1%	16	4.2%	11	2.9%
	PTTR	199	126	63.3%	88	44.2%	61	30.7%	42	21.1%	24	12.1%	12	6.0%
	Total	964	689	71.5%	462	47.9%	326	33.8%	185	19.2%	73	7.6%	40	4.1%
1994	FTFTF	343	250	72.9%	197	57.4%	184	53.6%	106	30.9%	31	9.0%	10	2.9%
	PTFTF	22	11	50.0%	6	27.3%	4	18.2%	1	4.5%	0	0.0%	0	0.0%
	FTTR	341	253	74.2%	162	47.5%	71	20.8%	36	10.6%	17	5.0%	9	2.6%
	PTTR	212	144	67.9%	120	56.6%	76	35.8%	54	25.5%	33	15.6%	25	11.8%
	Total	918	658	71.7%	485	52.8%	335	36.5%	197	21.5%	81	8.8%	44	4.8%
1995	FTFTF	319	247	77.4%	184	57.7%	174	54.5%	99	31.0%	33	10.3%	15	4.7%
	PTFTF	21	10	47.6%	7	33.3%	6	28.6%	4	19.0%	3	14.3%	3	14.3%
	FTTR	311	236	75.9%	160	51.4%	72	23.2%	29	9.3%	15	4.8%	11	3.5%
	PTTR	197	119	60.4%	97	49.2%	72	36.5%	48	24.4%	33	16.8%	22	11.2%
	Total	848	612	72.2%	448	52.8%	324	38.2%	180	21.2%	84	9.9%	51	6.0%
1996	FTFTF	413	337	81.6%	281	68.0%	255	61.7%	153	37.0%	38	9.2%	22	5.3%
	PTFTF	17	10	58.8%	4	23.5%	3	17.6%	3	17.6%	1	5.9%	1	5.9%
	FTTR	339	257	75.8%	161	47.5%	67	19.8%	33	9.7%	8	2.4%	6	1.8%
	PTTR	210	124	59.0%	92	43.8%	64	30.5%	35	16.7%	26	12.4%	19	9.0%
	Total	979	728	74.4%	538	55.0%	389	39.7%	224	22.9%	73	7.5%	48	4.9%
1997	FTFTF	454	359	79.1%	306	67.4%	294	64.8%	162	35.7%	45	9.9%	-	-
	PTFTF	17	8	47.1%	7	41.2%	4	23.5%	4	23.5%	3	17.6%	-	-
	FTTR	351	269	76.6%	168	47.9%	73	20.8%	29	8.3%	12	3.4%	-	-
	PTTR	208	139	66.8%	104	50.0%	69	33.2%	44	21.2%	31	14.9%	-	-
	Total	1,030	775	75.2%	585	56.8%	440	42.7%	239	23.2%	91	8.8%	-	-
1998	FTFTF	472	392	83.1%	353	74.8%	321	68.0%	167	35.4%	-	-	-	-
	PTFTF	17	12	70.6%	9	52.9%	7	41.2%	6	35.3%	-	-	-	-
	FTTR	351	264	75.2%	171	48.7%	77	21.9%	35	10.0%	-	-	-	-
	PTTR	183	120	65.6%	91	49.7%	67	36.6%	39	21.3%	-	-	-	-
	Total	1,023	788	77.0%	624	61.0%	472	46.1%	247	24.1%	-	-	-	-
1999	FTFTF	528	435	82.4%	378	71.6%	348	65.9%	-	-	-	-	-	-
	PTFTF	8	4	50.0%	3	37.5%	2	25.0%	-	-	-	-	-	-
	FTTR	364	274	75.3%	169	46.4%	88	24.2%	-	-	-	-	-	-
	PTTR	152	93	61.2%	74	48.7%	53	34.9%	-	-	-	-	-	-
	Total	1,052	806	76.6%	624	59.3%	491	46.7%	-	-	-	-	-	-
2000	FTFTF	638	542	85.0%	490	76.8%	-	-	-	-	-	-	-	-
	PTFTF	6	4	66.7%	4	66.7%	-	-	-	-	-	-	-	-
	FTTR	369	276	74.8%	184	49.9%	-	-	-	-	-	-	-	-
	PTTR	150	84	56.0%	65	43.3%	-	-	-	-	-	-	-	-
	Total	1,163	906	77.9%	743	63.9%	-	-	-	-	-	-	-	-
2001	FTFTF	638	525	82.3%	-	-	-	-	-	-	-	-	-	-
	PTFTF	6	2	33.3%	-	-	-	-	-	-	-	-	-	-
	FTTR	369	291	78.9%	-	-	-	-	-	-	-	-	-	-
	PTTR	150	92	61.3%	-	-	-	-	-	-	-	-	-	-
	Total	1,163	910	78.2%	-	-	-	-	-	-	-	-	-	-

* FTFTF=full-time, first-time freshmen; PTFTF=part-time, first-time freshmen; FTTR=full-time transfers; and PTTR=part-time transfers.

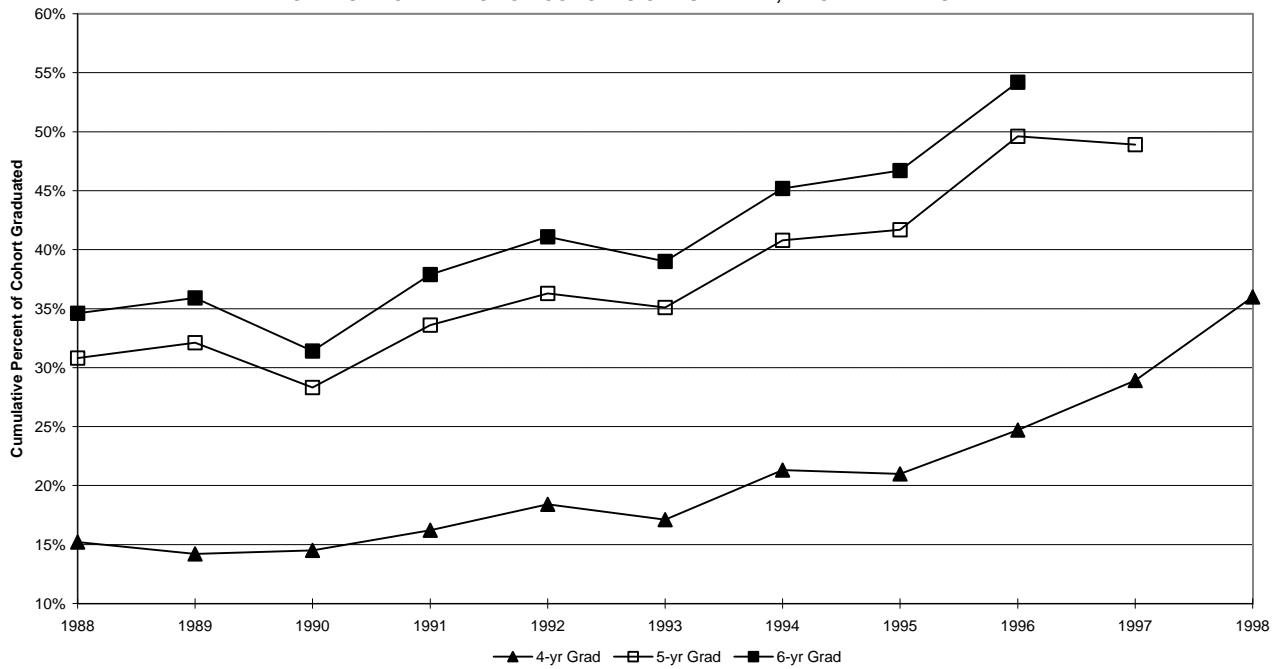


NEW UNDERGRADUATE STUDENT COHORT CUMULATIVE GRADUATION RATES

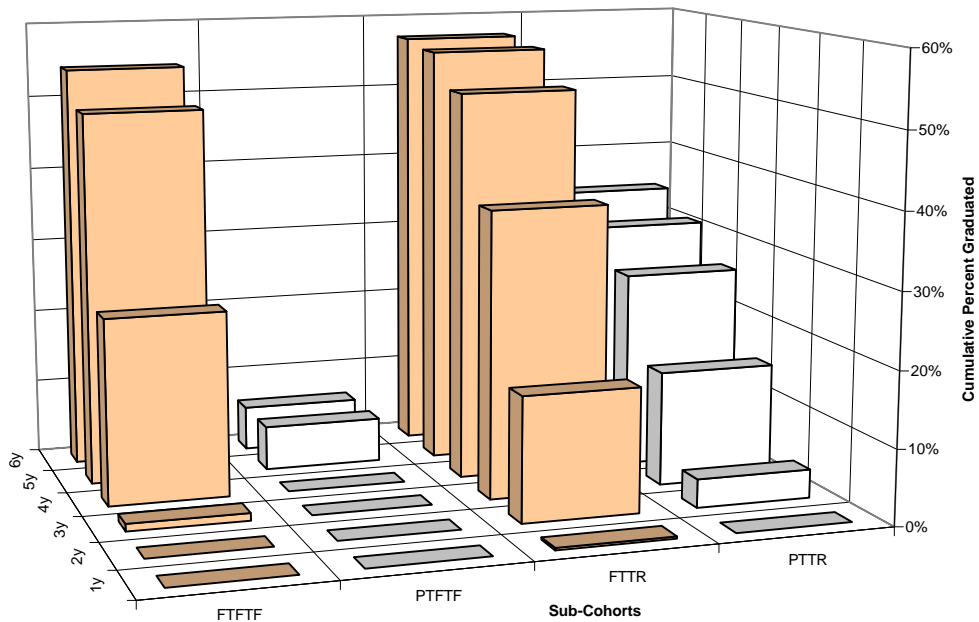
Fall of Entry	Sub-Cohorts*	Original Size	One-Year Cumulative Graduation		Two-Year Cumulative Graduation		Three-Year Cumulative Graduation		Four-Year Cumulative Graduation		Five-Year Cumulative Graduation		Six-Year Cumulative Graduation	
			#	Rate	#	Rate	#	Rate	#	Rate	#	Rate	#	Rate
1992	FTFTF	419	0	0.0%	0	0.0%	3	0.7%	77	18.4%	152	36.3%	172	41.1%
	PTFTF	38	0	0.0%	0	0.0%	0	0.0%	1	2.6%	7	18.4%	9	23.7%
	FTTR	358	5	1.4%	87	24.3%	165	46.1%	205	57.3%	220	61.5%	225	62.8%
	PTTR	217	0	0.0%	8	3.7%	30	13.8%	51	23.5%	64	29.5%	73	33.6%
	Total	1,032	5	0.5%	95	9.2%	198	19.2%	334	32.4%	443	42.9%	479	46.4%
1993	FTFTF	362	0	0.0%	0	0.0%	2	0.6%	62	17.1%	127	35.1%	141	39.0%
	PTFTF	24	0	0.0%	0	0.0%	0	0.0%	1	4.2%	3	12.5%	4	16.7%
	FTTR	379	4	1.1%	89	23.5%	168	44.3%	210	55.4%	221	58.3%	230	60.7%
	PTTR	199	0	0.0%	7	3.5%	27	13.6%	43	21.6%	56	28.1%	65	32.7%
	Total	964	4	0.4%	96	10.0%	197	20.4%	316	32.8%	407	42.2%	440	45.6%
1994	FTFTF	343	0	0.0%	0	0.0%	1	0.3%	73	21.3%	140	40.8%	155	45.2%
	PTFTF	22	0	0.0%	0	0.0%	0	0.0%	1	4.5%	1	4.5%	1	4.5%
	FTTR	341	4	1.2%	83	24.3%	165	48.4%	204	59.8%	222	65.1%	229	67.2%
	PTTR	212	0	0.0%	8	3.8%	35	16.5%	56	26.4%	72	34.0%	77	36.3%
	Total	918	4	0.4%	91	9.9%	201	21.9%	334	36.4%	435	47.4%	462	50.3%
1995	FTFTF	319	0	0.0%	0	0.0%	1	0.3%	67	21.0%	133	41.7%	149	46.7%
	PTFTF	21	0	0.0%	0	0.0%	0	0.0%	0	0.0%	0	0.0%	1	4.8%
	FTTR	311	0	0.0%	53	17.0%	131	42.1%	169	54.3%	183	58.8%	187	60.1%
	PTTR	197	0	0.0%	4	2.0%	21	10.7%	36	18.3%	49	24.9%	58	29.4%
	Total	848	0	0.0%	57	6.7%	153	18.0%	272	32.1%	365	43.0%	395	46.6%
1996	FTFTF	413	0	0.0%	0	0.0%	4	1.0%	102	24.7%	205	49.6%	224	54.2%
	PTFTF	17	0	0.0%	0	0.0%	0	0.0%	0	0.0%	1	5.9%	1	5.9%
	FTTR	339	1	0.3%	56	16.5%	129	38.1%	176	51.9%	191	56.3%	194	57.2%
	PTTR	210	0	0.0%	8	3.8%	32	15.2%	55	26.2%	65	31.0%	72	34.3%
	Total	979	1	0.1%	64	6.5%	165	16.9%	333	34.0%	462	47.2%	491	50.2%
1997	FTFTF	454	0	0.0%	0	0.0%	1	0.2%	131	28.9%	222	48.9%	-	-
	PTFTF	17	0	0.0%	0	0.0%	0	0.0%	0	0.0%	1	5.9%	-	-
	FTTR	351	2	0.6%	69	19.7%	154	43.9%	195	55.6%	212	60.4%	-	-
	PTTR	208	0	0.0%	6	2.9%	22	10.6%	44	21.2%	55	26.4%	-	-
	Total	1,030	2	0.2%	75	7.3%	177	17.2%	370	35.9%	490	47.6%	-	-
1998	FTFTF	472	0	0.0%	0	0.0%	6	1.3%	170	36.0%	-	-	-	-
	PTFTF	17	0	0.0%	0	0.0%	0	0.0%	1	5.9%	-	-	-	-
	FTTR	351	1	0.3%	70	19.9%	143	40.7%	183	52.1%	-	-	-	-
	PTTR	183	0	0.0%	7	3.8%	25	13.7%	48	26.2%	-	-	-	-
	Total	1,023	1	0.1%	77	7.5%	174	17.0%	402	39.3%	-	-	-	-
1999	FTFTF	528	0	0.0%	1	0.2%	7	1.3%	-	-	-	-	-	-
	PTFTF	8	0	0.0%	0	0.0%	0	0.0%	-	-	-	-	-	-
	FTTR	364	2	0.5%	81	22.3%	159	43.7%	-	-	-	-	-	-
	PTTR	152	0	0.0%	5	3.3%	14	9.2%	-	-	-	-	-	-
	Total	1,052	2	0.2%	87	8.3%	180	17.1%	-	-	-	-	-	-
2000	FTFTF	638	0	0.0%	2	0.3%	-	-	-	-	-	-	-	-
	PTFTF	6	0	0.0%	0	0.0%	-	-	-	-	-	-	-	-
	FTTR	369	3	0.8%	75	20.3%	-	-	-	-	-	-	-	-
	PTTR	150	0	0.0%	4	2.7%	-	-	-	-	-	-	-	-
	Total	1,163	3	0.3%	81	7.0%	-	-	-	-	-	-	-	-
2001	FTFTF	638	0	0.0%	-	-	-	-	-	-	-	-	-	-
	PTFTF	6	0	0.0%	-	-	-	-	-	-	-	-	-	-
	FTTR	369	0	0.0%	-	-	-	-	-	-	-	-	-	-
	PTTR	150	0	0.0%	-	-	-	-	-	-	-	-	-	-
	Total	1,163	0	0.0%	-	-	-	-	-	-	-	-	-	-

* FTFTF=full-time, first-time freshmen; PTFTF=part-time, first-time freshmen; FTTR=full-time transfers; and PTTR=part-time transfers.

GRADUATION RATES FOR COHORTS OF FULL-TIME, FIRST-TIME FRESHMEN



SIX-YEAR GRADUATION BY SUB-COHORT (FALL 1996 ENTERING CLASS)



SIX-YEAR RETENTION BY ADMIT TYPE FOR FULL-TIME, FIRST-TIME FRESHMEN

Fall of Entry	Sub-Cohorts	Original Size	Retained One-Year		Retained Two-Years		Retained Three-Years		Retained Four-Years		Retained Five-Years		Retained Six-Years	
			#	Rate	#	Rate	#	Rate	#	Rate	#	Rate	#	Rate
1992	Regular	279	221	79.2%	164	58.8%	151	54.1%	73	26.2%	20	7.2%	10	3.6%
	EOF	98	64	65.3%	47	48.0%	35	35.7%	26	26.5%	5	5.1%	3	3.1%
	Special	42	29	69.0%	23	54.8%	18	42.9%	14	33.3%	5	11.9%	0	0.0%
	Total	419	314	74.9%	234	55.8%	204	48.7%	113	27.0%	30	7.2%	13	3.1%
1993	Regular	240	171	71.3%	140	58.3%	128	53.3%	69	28.8%	11	4.6%	8	3.3%
	EOF	83	65	78.3%	40	48.2%	28	33.7%	24	28.9%	10	12.0%	3	3.6%
	Special	39	33	84.6%	25	64.1%	24	61.5%	16	41.0%	8	20.5%	2	5.1%
	Total	362	269	74.3%	205	56.6%	180	49.7%	109	30.1%	29	8.0%	13	3.6%
1994	Regular	217	152	70.0%	125	57.6%	124	57.1%	61	28.1%	19	8.8%	5	2.3%
	EOF	90	68	75.6%	46	51.1%	37	41.1%	29	32.2%	7	7.8%	2	2.2%
	Special	36	30	83.3%	26	72.2%	23	63.9%	16	44.4%	5	13.9%	3	8.3%
	Total	343	250	72.9%	197	57.4%	184	53.6%	106	30.9%	31	9.0%	10	2.9%
1995	Regular	183	140	76.5%	113	61.7%	110	60.1%	53	29.0%	14	7.7%	9	4.9%
	EOF	97	74	76.3%	46	47.4%	40	41.2%	32	33.0%	15	15.5%	6	6.2%
	Special	39	33	84.6%	25	64.1%	24	61.5%	14	35.9%	4	10.3%	0	0.0%
	Total	319	247	77.4%	184	57.7%	174	54.5%	99	31.0%	33	10.3%	15	4.7%
1996	Regular	296	239	80.7%	202	68.2%	184	62.2%	102	34.5%	25	8.4%	15	5.1%
	EOF	74	68	91.9%	52	70.3%	46	62.2%	34	45.9%	9	12.2%	3	4.1%
	Special	43	30	69.8%	27	62.8%	25	58.1%	17	39.5%	3	7.0%	1	2.3%
	Total	413	337	81.6%	281	68.0%	255	61.7%	153	37.0%	37	9.0%	19	4.6%
1997	Regular	340	262	77.1%	220	64.7%	212	62.4%	100	29.4%	31	9.1%	-	-
	EOF	67	60	89.6%	52	77.6%	52	77.6%	35	52.2%	9	13.4%	-	-
	Special	47	37	78.7%	34	72.3%	30	63.8%	27	57.4%	5	10.6%	-	-
	Total	454	359	79.1%	306	67.4%	294	64.8%	162	35.7%	45	9.9%	-	-
1998	Regular	352	295	83.8%	271	77.0%	246	69.9%	124	35.2%	-	-	-	-
	EOF	69	57	82.6%	46	66.7%	42	60.9%	23	33.3%	-	-	-	-
	Special	51	40	78.4%	36	70.6%	33	64.7%	20	39.2%	-	-	-	-
	Total	472	392	83.1%	353	74.8%	321	68.0%	167	35.4%	-	-	-	-
1999	Regular	414	330	79.7%	292	70.5%	267	64.5%	-	-	-	-	-	-
	EOF	60	56	93.3%	44	73.3%	41	68.3%	-	-	-	-	-	-
	Special	54	49	90.7%	42	77.8%	37	68.5%	-	-	-	-	-	-
	Total	528	435	82.4%	378	71.6%	345	65.3%	-	-	-	-	-	-
2000	Regular	511	439	85.9%	399	78.1%	-	-	-	-	-	-	-	-
	EOF	64	55	85.9%	50	78.1%	-	-	-	-	-	-	-	-
	Special	63	48	76.2%	41	65.1%	-	-	-	-	-	-	-	-
	Total	638	542	85.0%	490	76.8%	-	-	-	-	-	-	-	-
2001	Regular	497	414	83.3%	-	-	-	-	-	-	-	-	-	-
	EOF	69	60	87.0%	-	-	-	-	-	-	-	-	-	-
	Special	62	51	82.3%	-	-	-	-	-	-	-	-	-	-
	Total	628	525	83.6%	-	-	-	-	-	-	-	-	-	-

TEN-YEAR CUMULATIVE GRADUATION RATES BY ADMIT TYPE FOR FULL-TIME, FIRST-TIME FRESHMEN

Fall of Entry	Sub-Cohorts	Original Size	Four-Year Cumulative Graduation [1]		Five-Year Cumulative Graduation		Six-Year Cumulative Graduation		Seven-Year Cumulative Graduation		Eight-Year Cumulative Graduation		Nine-Year Cumulative Graduation		Ten-Year Cumulative Graduation	
			#	Rate	#	Rate	#	Rate	#	Rate	#	Rate	#	Rate	#	Rate
1989	Regular	323	55	17.0%	119	36.8%	128	39.6%	136	42.1%	138	42.7%	142	44.0%	143	44.3%
	EOF	90	7	7.8%	19	21.1%	23	25.6%	23	25.6%	23	25.6%	23	25.6%	24	26.7%
	Special	60	5	8.3%	14	23.3%	19	31.7%	21	35.0%	22	36.7%	22	36.7%	22	36.7%
	Total	473	67	14.2%	152	32.1%	170	35.9%	180	38.1%	183	38.7%	187	39.5%	189	40.0%
1990	Regular	274	55	20.1%	98	35.8%	104	38.0%	108	39.4%	110	40.1%	112	40.9%	112	40.9%
	EOF	100	3	3.0%	13	13.0%	20	20.0%	24	24.0%	24	24.0%	24	24.0%	25	25.0%
	Special	47	3	6.4%	8	17.0%	8	17.0%	9	19.1%	9	19.1%	10	21.3%	10	21.3%
	Total	421	61	14.5%	119	28.3%	132	31.4%	141	33.5%	143	34.0%	146	34.7%	147	34.9%
1991	Regular	298	57	19.1%	119	39.9%	131	44.0%	135	45.3%	135	45.3%	137	46.0%	137	46.0%
	EOF	85	3	3.5%	11	12.9%	14	16.5%	17	20.0%	17	20.0%	18	21.2%	18	21.2%
	Special	42	9	21.4%	13	31.0%	16	38.1%	18	42.9%	18	42.9%	18	42.9%	19	45.2%
	Total	425	69	16.2%	143	33.6%	161	37.9%	170	40.0%	170	40.0%	173	40.7%	174	40.9%
1992	Regular	279	71	25.4%	126	45.2%	136	48.7%	139	49.8%	142	50.9%	142	50.9%	142	50.9%
	EOF	98	2	2.0%	16	16.3%	21	21.4%	22	22.4%	22	22.4%	22	22.4%	22	22.4%
	Special	42	4	9.5%	10	23.8%	15	35.7%	16	38.1%	16	38.1%	16	38.1%	16	38.1%
	Total	419	77	18.4%	152	36.3%	172	41.1%	177	42.2%	180	43.0%	180	43.0%	180	43.0%
1993	Regular	240	58	24.2%	105	43.8%	111	46.3%	113	47.1%	113	47.1%	113	47.1%	-	-
	EOF	83	1	1.2%	8	9.6%	13	15.7%	15	18.1%	16	19.3%	16	19.3%	-	-
	Special	39	3	7.7%	14	35.9%	17	43.6%	17	43.6%	17	43.6%	17	43.6%	-	-
	Total	362	62	17.1%	127	35.1%	141	39.0%	145	40.1%	146	40.3%	146	40.3%	-	-
1994	Regular	217	60	27.6%	100	46.1%	111	51.2%	115	53.0%	115	53.0%	-	-	-	-
	EOF	90	6	6.7%	23	25.6%	25	27.8%	26	28.9%	26	28.9%	-	-	-	-
	Special	36	7	19.4%	17	47.2%	19	52.8%	20	55.6%	20	55.6%	-	-	-	-
	Total	343	73	21.3%	140	40.8%	155	45.2%	161	46.9%	161	46.9%	-	-	-	-
1995	Regular	183	52	28.4%	95	51.9%	98	53.6%	99	54.1%	-	-	-	-	-	-
	EOF	97	4	4.1%	17	17.5%	27	27.8%	30	30.9%	-	-	-	-	-	-
	Special	39	11	28.2%	21	53.8%	24	61.5%	24	61.5%	-	-	-	-	-	-
	Total	319	67	21.0%	133	41.7%	149	46.7%	153	48.0%	-	-	-	-	-	-
1996	Regular	296	87	29.4%	155	52.4%	163	55.1%	-	-	-	-	-	-	-	-
	EOF	74	9	12.2%	27	36.5%	30	40.5%	-	-	-	-	-	-	-	-
	Special	43	6	14.0%	23	53.5%	23	53.5%	-	-	-	-	-	-	-	-
	Total	413	102	24.7%	205	49.6%	216	52.3%	-	-	-	-	-	-	-	-
1997	Regular	340	114	33.5%	172	50.6%	-	-	-	-	-	-	-	-	-	-
	EOF	67	11	16.4%	29	43.3%	-	-	-	-	-	-	-	-	-	-
	Special	47	6	12.8%	21	44.7%	-	-	-	-	-	-	-	-	-	-
	Total	454	131	28.9%	222	48.9%	-	-	-	-	-	-	-	-	-	-
1998	Regular	352	122	34.7%	-	-	-	-	-	-	-	-	-	-	-	-
	EOF	69	15	21.7%	-	-	-	-	-	-	-	-	-	-	-	-
	Special	51	13	25.5%	-	-	-	-	-	-	-	-	-	-	-	-
	Total	472	150	31.8%	-	-	-	-	-	-	-	-	-	-	-	-

[1] Includes all from cohort who are graduated in fewer than four years.

**COMBINED SIX-YEAR GRADUATION, RETENTION, AND TRANSFER
FOR FULL-TIME, FIRST-TIME FRESHMAN COHORTS USING
IPEDS GRADUATION RATE SURVEY METHODOLOGY [1]**

Fall of Entry	Original Cohort Size	Cohort Less Exclusions	Graduated in Six Years		Retained Through Six Years		Transferred Within Six Years [2]		Combined Grad- uation, Retention, and Transfer		Missing [3]	
			No.	Pct.	No.	Pct.	No.	Pct.	No.	Pct.	No.	Pct.
1991	425	423	161	38.1%	14	3.3%	109	25.8%	284	67.1%	139	32.7%
1992	419	419	172	41.1%	13	3.1%	95	22.7%	280	66.8%	139	33.2%
1993	362	361	141	39.1%	13	3.6%	71	19.7%	225	62.3%	136	37.6%
1994	343	343	155	45.2%	7	2.0%	61	17.8%	223	65.0%	120	35.0%
1995	319	319	149	46.7%	11	3.4%	77	24.1%	237	74.3%	82	25.7%
1996	413	413	224	54.2%	22	5.3%	82	19.9%	328	79.4%	85	20.6%

- [1] Institutions may reduce the sizes of their entering cohorts by excluding cohort members who: (a) are deceased or totally and permanently disabled, (b) left school to serve in the armed forces, (c) left school to serve with a foreign aid service of the Federal Government, or (d) left school to serve on official church missions.
- [2] Limited to those institutions reporting to the New Jersey Commission on Higher Education's Student Unit Record Enrollment (SURE) system. This includes all public New Jersey institutions and three independent institutions (Bloomfield, Drew, and Fairleigh Dickinson).
- [3] Students could be either stop-outs, drop-outs, or transfers to other higher education institutions not covered by the SURE system.

