

SECTION I:
GENERAL INFORMATION

2002 INSTITUTIONAL PROFILE

RAMAPO COLLEGE OF NEW JERSEY

The College

Established in 1969 and opened in 1971, Ramapo College of New Jersey is the Garden State's public liberal arts college. Ramapo offers bachelors' degrees in the arts, business, humanities, social sciences and the sciences, as well as in professional studies, which include teacher certification programs at the elementary and secondary levels, and social work. The College also offers four graduate programs; a Master of Arts in Liberal Studies, a Master of Science in Educational Technology, a Master of Business Administration and a Master of Science in Nursing. In addition, the College offers a joint Bachelor of Science in Nursing, Bachelor of Science in Clinical Laboratory Science, and a Bachelor of Biology/Doctor of Physical Therapy with UMDNJ (University of Medicine and Dentistry of New Jersey), and a joint Bachelor of Science/Doctor of Chiropractic with New York Chiropractic College.

Ramapo College offers a mission-driven liberal arts education with particular emphasis on international education, intercultural understanding, interdisciplinary teaching, and experiential learning. The College's educational philosophy, organization, and programming are designed to reinforce its mission as the "college of choice for a global education." Organized into five interdisciplinary schools, the College's programs are complemented by lectures, performances, and off-campus experiences.

Ramapo College takes pride in four distinctive features that enhance each student's education: (1) concern for student development in and out of the classroom; (2) an exemplary faculty committed to an emphasis on the international and intercultural dimensions of all fields of study; (3) an interdisciplinary problem-solving orientation in its philosophy and programs; and (4) a collaborative association with corporations, communities, and educational institutions in the development of work- and community-related opportunities.

Located on 300 acres in the foothills of the Ramapo Mountains in Mahwah, the barrier-free Ramapo College campus is just 25 miles from New York City. The student body of over 5,000 reflects the diversity of the more than 17 states, the District of Columbia and 67 countries served by the College.

Ramapo College is a founding member of the Council of Public Liberal Arts Colleges (COPLAC). The Council is an alliance of institutions whose members are dedicated to the education of undergraduates in the liberal arts tradition, to the creation of teaching and learning communities, and to the expansion of access to undergraduate liberal arts education.

Accreditation

The Middle States Association of Colleges and Schools first accredited the College in 1975. Ramapo College was reaccredited in 1980, 1990, and 1995. Middle States reaffirmed the College's accreditation in 2000. National disciplinary associations and State entities have also accredited certain Ramapo programs, including Chemistry (American Chemical Society), Nursing (National League for Nursing and N.J. Board of Nursing), Social Work (Council on Social Work Education), and Teacher Education (N.J. State Department of Education).

Academic Programs

Ramapo is organized into five academic schools (Administration and Business, American /International Studies, Contemporary Arts, Social Science and Human Services, and Theoretical and Applied Science) offering 34 undergraduate majors. Each of the schools has its own academic identity and outlook, yet each is linked through an interdisciplinary curriculum and concepts of international and multi-cultural education. Students may elect to take courses across two or more schools, but in their choice of a major, they identify with a particular school and program.

The Center for Academic Success provides Ramapo students with individual and small-group tutorial instruction, free of charge. CAS supports students' academic needs in English as a Second Language (ESL), reading, writing, mathematics, computer science, study skills and research paper design and presentation.

Ramapo's four graduate programs are not housed in academic schools, but instead are cross disciplinary in organization. The Master program in Liberal Studies admitted its first students in the spring of 1995, while the first degree-seeking students were matriculated in the Educational Technology program in spring 1998. A Masters in Business Administration program began admitting students in spring 1999 and the Masters of Science in Nursing program enrolled students for the first time the fall of 2001.

Ramapo has a gifted faculty that was instrumental in modeling the College's innovative academic programs. The faculty is well credentialed, with 96% of full-time faculty members holding either doctoral or terminal degrees in their fields. Many have received grants and fellowships from such prestigious agencies as the Ford, Fulbright, Guggenheim, Jerome, Kellogg, Mellon, National Science, and Woodrow Wilson Foundations; the National Endowment for the Arts; the National Endowment for the Humanities; the National Institute of Mental Health; the Social Science Research Council; the American Council on Education; and the American Council of Learned Societies.

The College Plant

Ramapo College is situated on the former Birch Estate. Some original buildings have been upgraded and are still in use, including the estate Mansion (administrative offices), the McBride House (admissions and enrollment management), and an old stone garage (mail and print shop).

In 1971, the campus consisted of the academic buildings and a power plant. Subsequent construction added a new academic building with an auditorium, a science building, a gymnasium with a pool, and a library. In 1991, a sculpture studio/foundry was added. Revenue bonds issued by the Educational Facilities Authority provided funding for four phases of residence halls and apartments and a Student Center and Annex. The Angelica and Russ Berrie Center for the Performing and Visual Arts, the Trustees' Pavilion and the Oak Hall residence facility opened in 1999. The Maple Hall residence opened in 2000. The historic Havermeyer House was acquired in 2001, the Village residence facility opened (phase I of III) in 2002 and (currently under construction) is a state-of-the-art Sports and Recreation Center/Public Event Area, approved by the Board of Trustees in 2002.

RAMAPO MISSION STATEMENT

Ramapo College of New Jersey, one of twelve senior public institutions in the New Jersey system of public higher education, offers programs in the liberal arts and sciences as well as in business and other professional studies, within a liberal education context at both the bachelor's and master's level. Organized into schools which provide thematic learning communities, the College presents a curriculum of traditional majors and innovative programs in an interdisciplinary fashion; selected programs are offered in collaboration with the New Jersey Institute of Technology, Rutgers University, the University of Medicine and Dentistry of New Jersey, and other institutions. Supported by global partnerships and telecommunications, international and intercultural education have become central themes in Ramapo's programming. The College purposefully involves students in the cultural diversity of the world and of American society.

Ramapo's well-credentialed faculty pride themselves on teaching and seek to educate students to become life-long learners. They emphasize critical thinking and the awareness of value questions, such as the importance of promoting a sustainable environment. They present a challenging educational program so that Ramapo graduates can pursue truth in an increasingly interdependent and intercultural world.

Ramapo provides individual attention to students, especially through the maintenance of small class size. Another historical characteristic of Ramapo College is the opportunity to encounter the world beyond the campus through its emphasis on experiential learning, which encompasses a rich combination of internship, field placement, community service, study abroad and cooperative education opportunities. These experiences help Ramapo fulfill its special commitment to assist in seeking employment for its graduates, while its high academic standards support the placement of many students in graduate and professional schools.

The College is a community committed to maintaining diversity of age, race, gender, sexual orientation, ethnicity and economic background among its faculty, staff and students, who come from many states and foreign countries. Barrier-free from its inception, the College has a continuing commitment to students with disabilities. This student profile supports Ramapo's commitment to increasingly selective admissions standards.

Ramapo students can commute or live in the residence halls and apartments on the beautiful three hundred acre suburban campus. The College's proximity to New York City affords access to additional cultural and educational opportunities. A dedicated staff seeks to ensure high quality in every aspect of college life. Ramapo provides a full range of student activities, intramural sports and intercollegiate athletics; the extra-curriculum seeks to prepare students for leadership and for active involvement in community affairs.

Ramapo shares its intellectual, cultural, and facility resources with area communities, corporations, schools, service organizations, and various governmental entities. In these ways, the College provides cultural enrichment, human resource development, and a strong positive economic impact.

Approved by the Board of Trustees on May 16, 2001

RAMAPO BOARD OF TRUSTEES: 2002-2003

Trustee	Term Expires	Residence
Gail Brady Chair	June 30, 2005	Verona
Emily Kosstrin Mann Vice Chair	June 30, 2004	Englewood
Jeffrey A. Sheppard Secretary	June 30, 2006	Mahwah
Arthur Ramirez Immediate Past Chair	June 30, 2006	North Haledon
Raymond Ocasio	June 30, 2006	Ridgewood
Geraldine Reed Brown	June 30, 2004	Montclair
B. Lawrence Branch	June 30, 2002	South Orange
Ruth E. Spellman	June 30, 2003	Pompton Plains
Gabriella Royle Student Trustee	June 30, 2003	Ledgewood
Daniel Makoski Alternate Student Trustee	June 30, 2003	Iselin
Dr. Rodney D. Smith <u>ex officio</u>	Congruent with office	President of the College

BOARD OFFICERS AND COMMITTEES: 2002-2003

Executive Committee:

Gail Brady – Chair
 Arthur Ramirez – Immediate Past Chair
 Emily Mann – Vice Chair
 Jeffrey Shepard – Secretary
 Thomas Dunn – Past Chair
 Rodney D. Smith – President (ex officio)

Academic Affairs Committee:

Trustees	Administration	Faculty Assembly	Professional Staff	Student Assembly
Raymond Ocasio, <i>Chair</i> Jeffrey Shepard Lawrence Branch Gabriella Royle Daniel Makoski Gail Brady, <i>ex officio</i> Edward Cody, <i>Recording Secretary</i> Kwesi Aggrey, <i>Assistant Recording Secretary</i>	Rodney D. Smith Martha Ecker	Kay Fowler	Babette Varano	Chris Irving

Student Affairs and Enrollment Management Committee:

Trustees	Administration	Faculty Assembly	Professional Staff	Student Assembly
Ruth Spellman, <i>Chair</i> Geraldine Reed-Brown Peter McBride Gabriella Royle Daniel Makoski Gail Brady, <i>ex officio</i> Pamela Bischoff, <i>Recording Secretary</i> Nancy Mackin, <i>Assistant Recording Secretary</i>	Rodney D. Smith Rita Tepper	Pat Keeton		Chris Irving

Finance Committee:

Trustees	Administration	Faculty Assembly	Professional Staff	Student Assembly
Arthur Ramirez, <i>Chair</i> Raymond Ocasio Emily Mann Gabriella Royle Daniel Makoski Gail Brady, <i>ex officio</i> Victoria Bruni, <i>Recording Secretary</i> Linda Madernini, <i>Assistant Recording Secretary</i>	Rodney D. Smith Richard Roberts Maria Krupin Dorothy Echols Tobe Denise Coleman	Robert Shine	Mark Singer	Chris Irving

RAMAPO COLLEGE OFFICERS

President	Rodney D. Smith, Ed.D.
Vice President for Academic Affairs and Interim Provost	Edward Cody, Ph.D.
Vice President for Student Affairs	Pamela M. Bischoff, Ed.D.
Vice President for Administration and Finance	Victoria H. Bruni, Esq.
Vice President for Institutional Advancement and Executive Director, Ramapo College Foundation	Cathleen Davey
Vice President for Enrollment Management	Rita F. Tepper

RAMAPO FACULTY & STAFF ORGANIZATIONS

FACULTY ASSEMBLY

President
Kathleen Fowler

AMERICAN FEDERATION OF TEACHERS

President
Wayne Hayes

PROFESSIONAL STAFF ASSOCIATION

Co-Chairs
Wanda Kosinski – Babette Varano

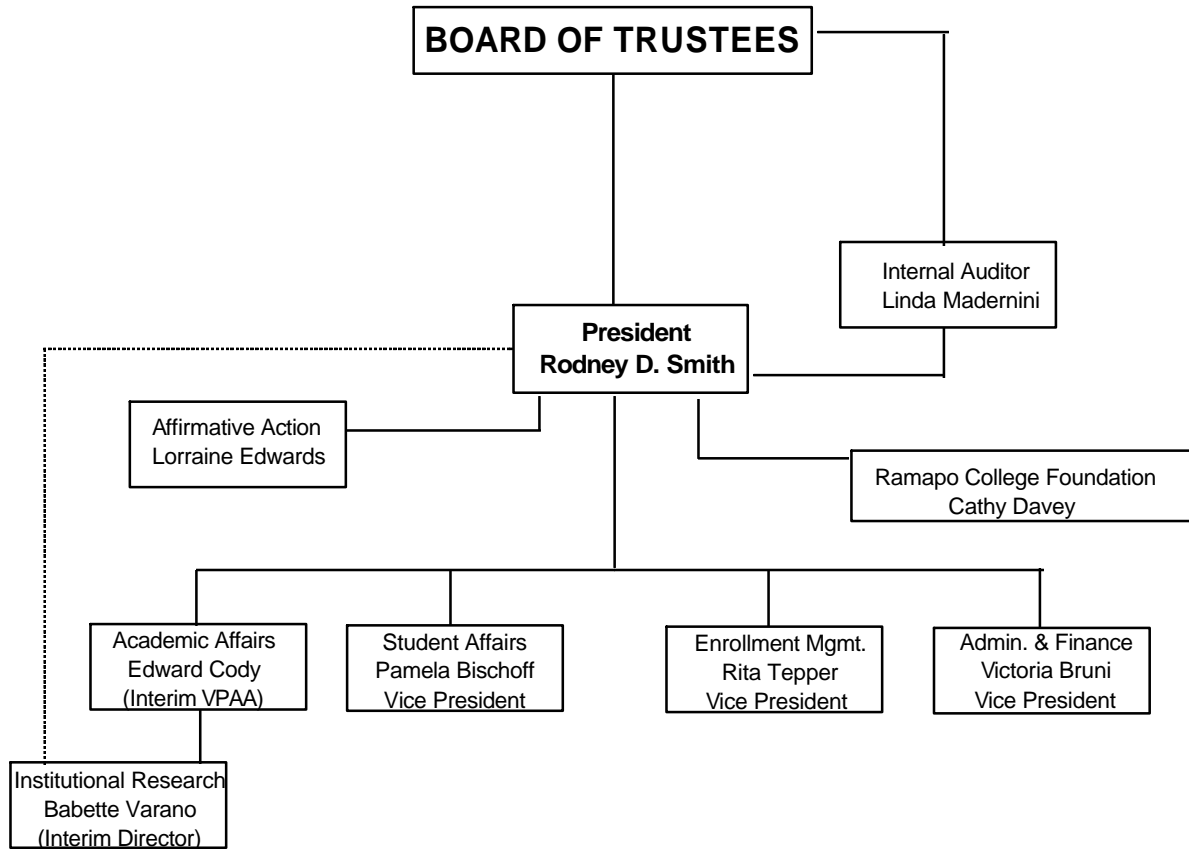
COMMUNICATION WORKERS OF AMERICA

President
Doreen Janes

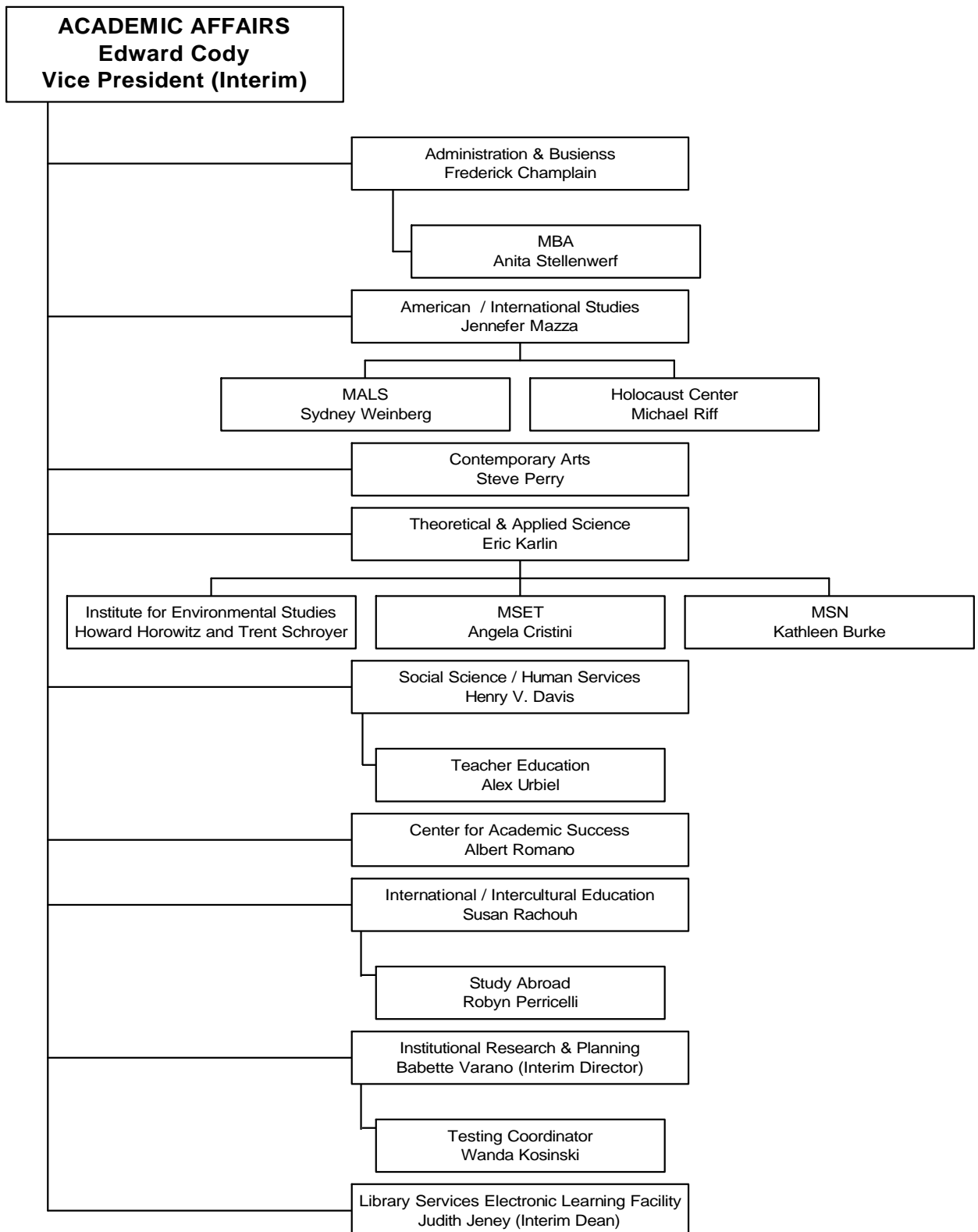
INTERNATIONAL FEDERATION OF PROFESSIONAL & TECHNICAL ENGINEERS

President
John Thompson

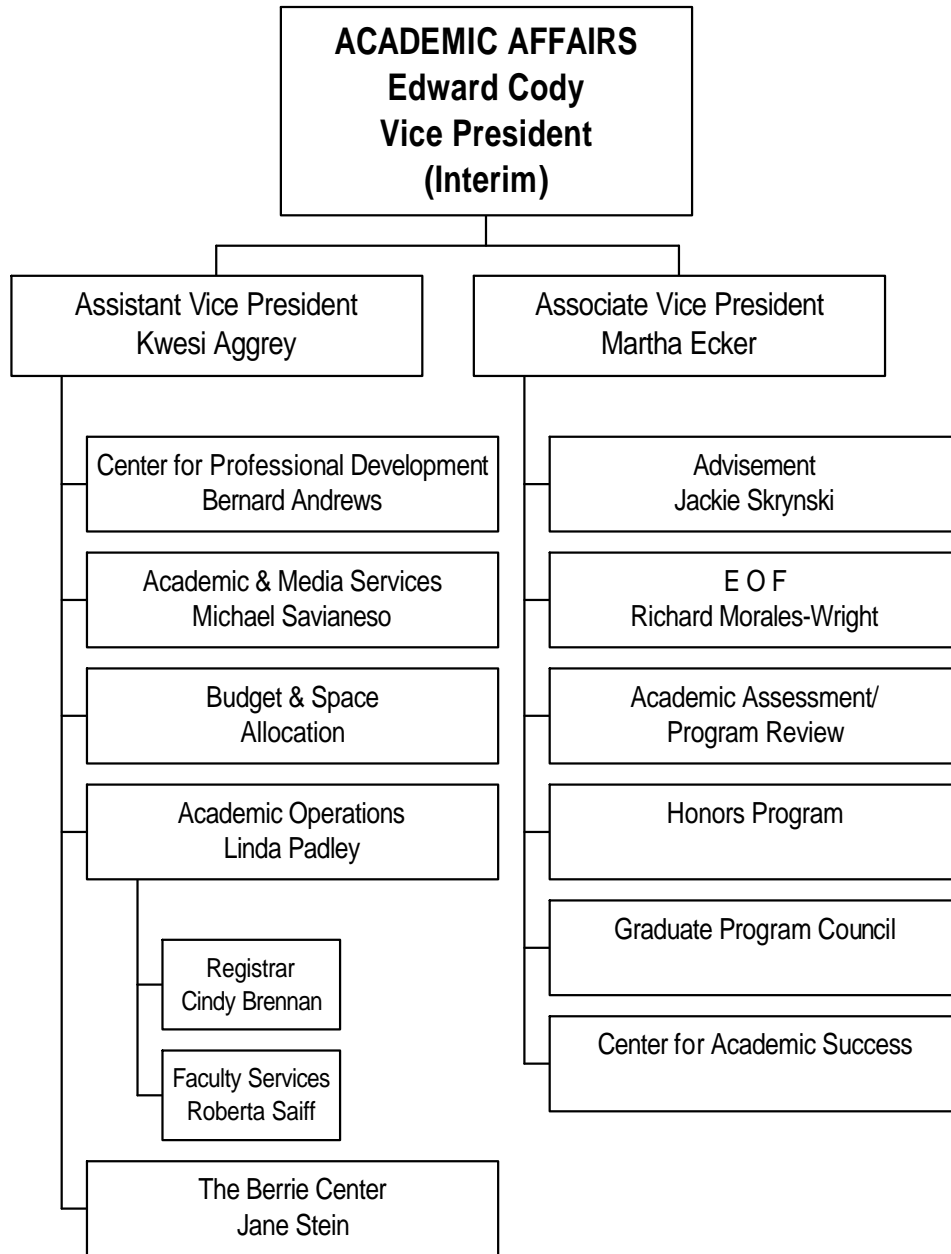
ORGANIZATION CHART: SENIOR ADMINISTRATION (11/02)



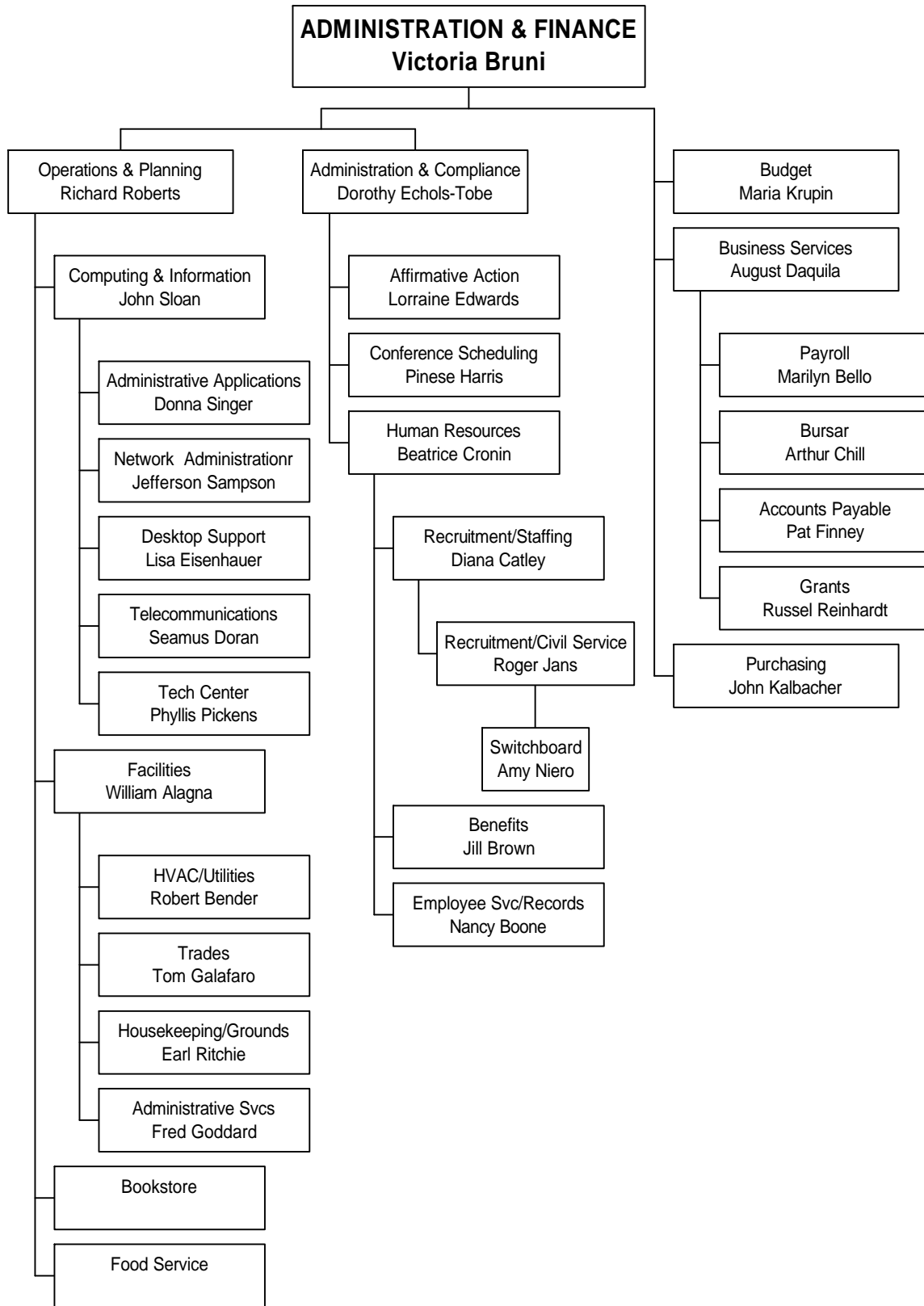
ORGANIZATION CHART: ACADEMIC AFFAIRS (11/02)



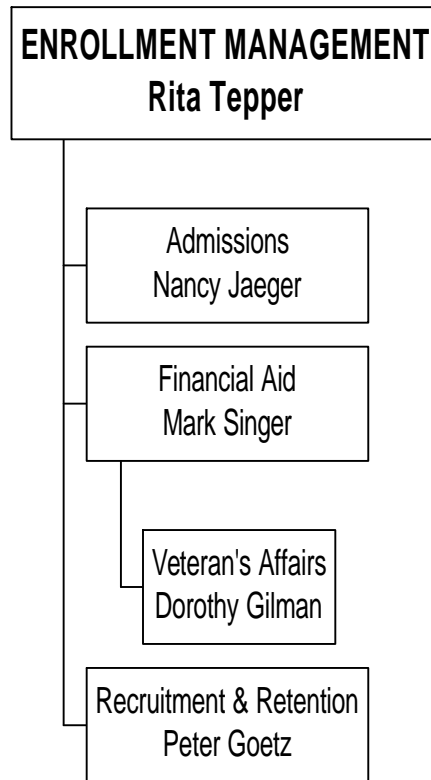
ORGANIZATION CHART: ACADEMIC AFFAIRS (continued) (11/02)



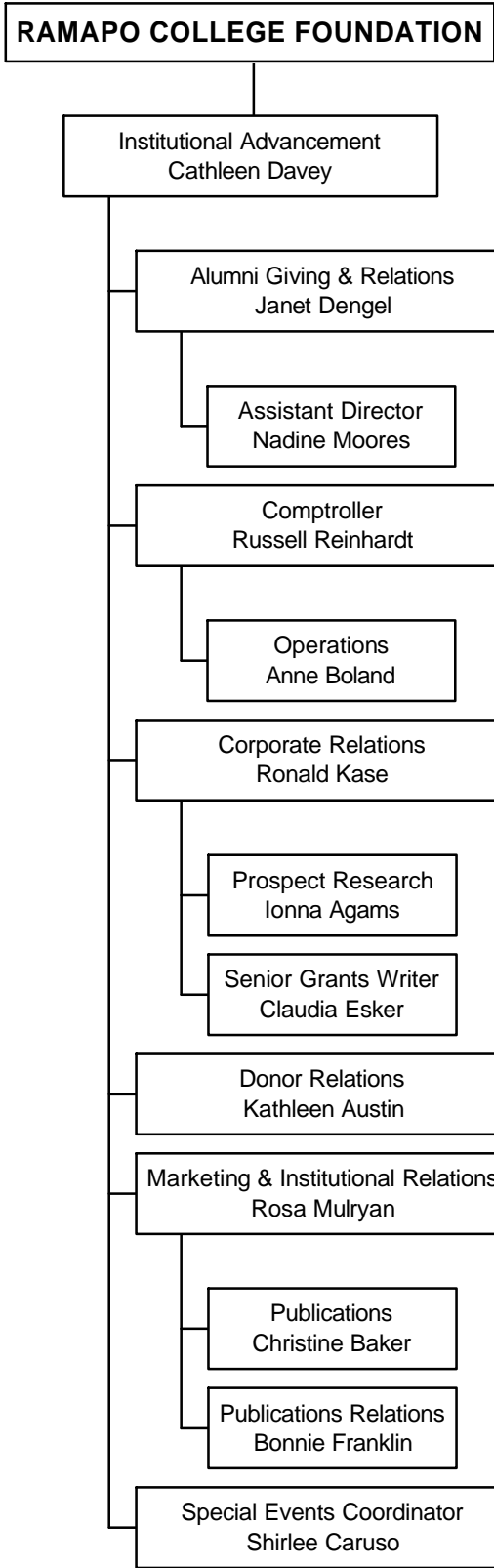
ORGANIZATION CHART:ADMINISTRATION AND FINANCE (11/02)



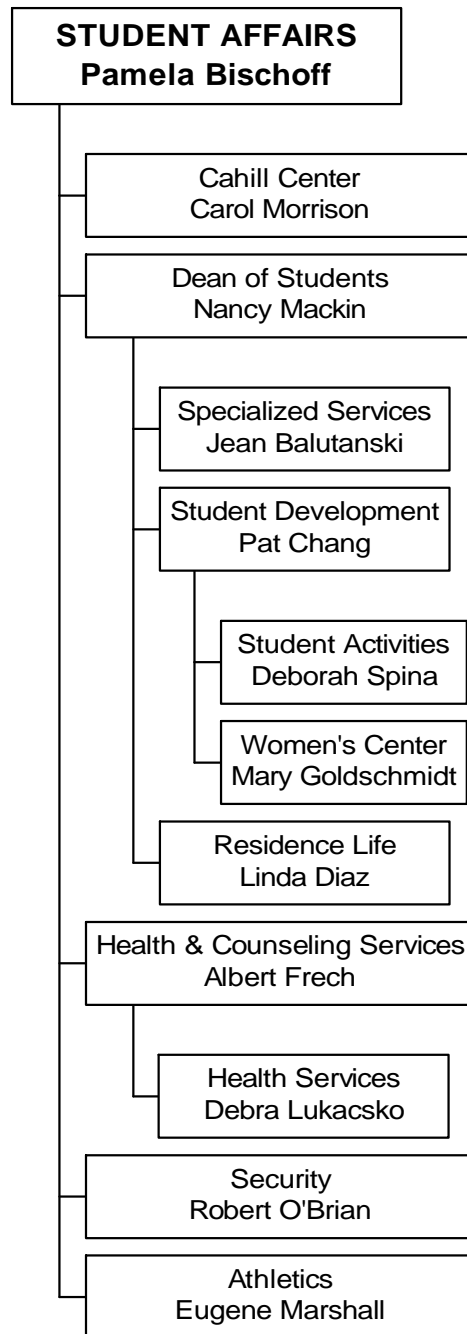
ORGANIZATION CHART: ENROLLMENT MANAGEMENT (11/02)

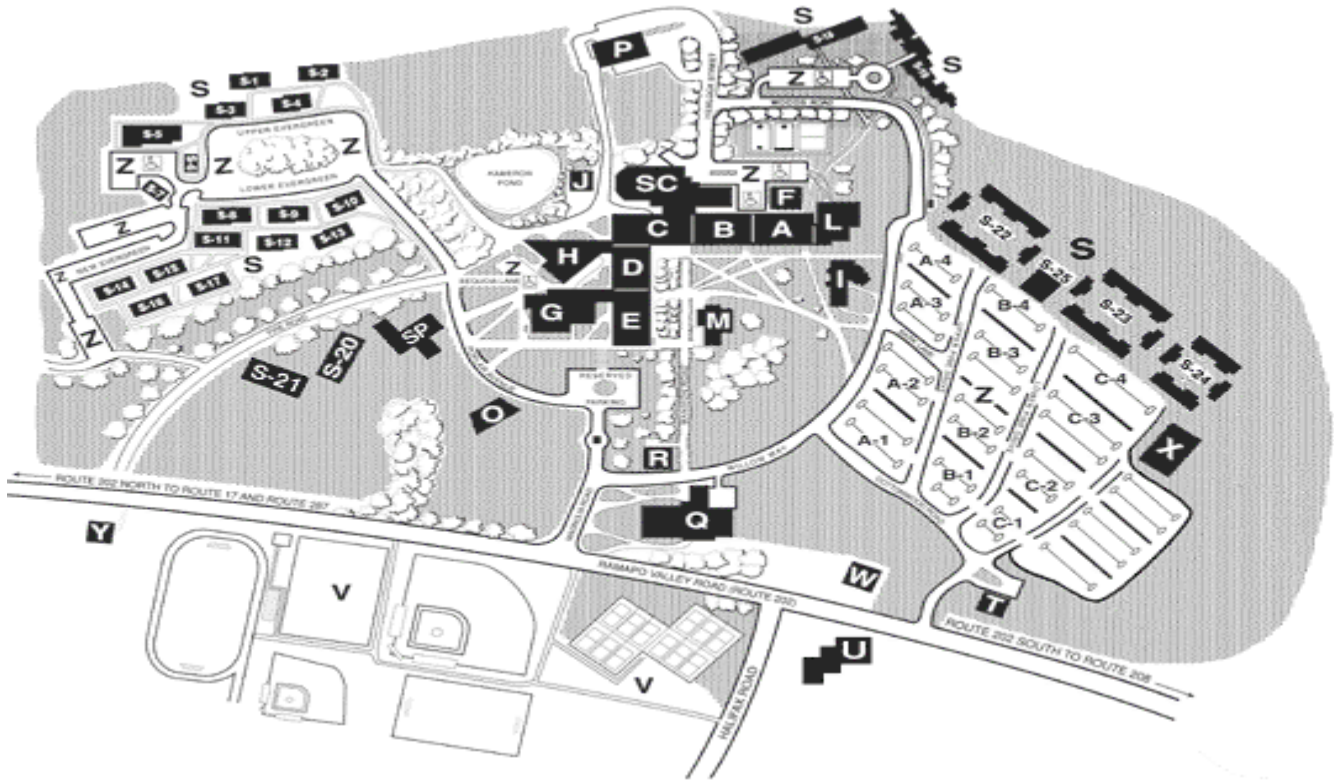


ORGANIZATION CHART: INSTITUTIONAL ADVANCEMENT (11/02)



ORGANIZATION CHART: STUDENT AFFAIRS (11/02)





Academic Buildings

- A** School of Administration and Business
- B** School of American and International Studies
Language Lab
Seldon Rodman Gallery of Popular Arts
- C** Cahill Center for Experiential Learning and Career Services
ITV
Residence Life
Security Office
Specialized Services
Student Affairs
Women's Center
- D** Academic Advisement Center
Academic Affairs
Affirmative Action
Business Office
Center for Health and Counseling Services:
 Counseling Services
Educational Opportunity Program
Human Resources
Institutional Relations
Registrar
Study Abroad
Web Administration
- E** Center for Academic Success
Center for Computing and Information Services
Computer Lab
Financial Aid
Center for Health and Counseling Services:
 Health Services
Institutional Research & Planning
Veterans' Office
- F** Technology and Education Center (TEC)
- G** School of Social Science and Human Services
School of Theoretical and Applied Science
- H** Auditorium
Media Center
- I** International Telecommunications Center
The Angelica and Russ Berrie Center
 for the Performing and Visual Arts
Adler Theater
André Z. Pascal Gallery
Dance/Theater Rehearsal Hall
Ingersoll-Rand Company Conference Room
Kresge Foundation Gallery
School of Contemporary Arts
Sharp Theater
Curtain Call Cafe

- J** Print Shop
Mail Room
- L** George T. Potter Library
Art Gallery
Center for Holocaust Studies
- M** Academic Affairs
Administration and Finance
Alumni Association
Board Room
Friends of Ramapo
Grants and Sponsored Projects
Institutional Advancement
President
Provost
Public Relations
Ramapo College Foundation
York Room
- O** Band Shell
- P** Facilities Management Complex
- Q** Athletic Center
Fitness Center
Gymnasium
Pool
Athletics, Intramurals, and Recreation Offices
- R** McBride House
Admissions
Enrollment Management
- S** Student Housing:
North Halls
 Buckeye (S-2)
 Butternut (S-17)
 Cypress (S-15)
 Elm (S-12)
 Hickory (S-1)
 Holly (S-4)
 International House (S-9)
 The Lodge (S-5)
 Maple (S-21)
 Mimosa (S-8)
 Mulberry (S-11)
 Oak Hall (S-20)
 Palm (S-10)
 Redwood (S-3)
 Science House (S-13)
 Sycamore (S-14)
 Tamarack (S-16)
 Laundry Room (S-6)
 Maintenance Building (S-7)

- S** Student Housing (continued):
South Halls
 Linden Hall (S-18)
 Pine Hall (S-19)
 The Thomases Commons (S-25)
 The Village (S-22, S-23, S-24)
- SC** Robert A. Scott Student Center:
Alumni Lounge
Bookstore
Campus Ministries
Dining Halls
Friends of Ramapo Hall
J.Lee's Activity Lounge
Student Center Office
Student Development Office
Student Government Office
- SP** The Trustee's Pavilion
Dining Halls
Fitness Center
Conference Rooms
- T** vacant building
- U** The Havermeyer House
- V** Sports Fields
 Baseball Field
 Multipurpose Field
 Running Track
 Soccer Field
 Softball Field
 Stadium Field
 Tennis Courts
- W** Visiting Scholar's Residence
- X** Environmental Center
- Y** Sculpture Studio
- Z** Parking Lots:
 Residence Parking: A-4, B-4
 Faculty/Staff Parking: A-1, A-2, A-3
 Student Parking: B-1, B-2, B-3,
 C-1, C-2, C-4
 Visitor Parking: C-3