

SECTION IV:

**DEGREES AWARDED AND
STUDENT OUTCOMES**

2011 INSTITUTIONAL PROFILE

TOTAL 2010-11 DEGREES AWARDED = 1,424

By Age

	Bachelor's		Master's		Total	
Less than 20	1	0.0%	0	0.0%	1	0.1%
20 to 24	1,070	80.8%	1	1.0%	1,071	75.2%
25 to 29	169	12.8%	34	34.3%	203	14.3%
30 to 39	47	3.5%	28	28.3%	75	5.3%
Greater than 39	38	2.9%	36	36.4%	74	5.2%
	1,325		99		1,424	

By Sex

	Bachelor's		Master's		Total	
Female	795	60.0%	73	73.7%	868	61.0%
Male	530	40.0%	26	26.3%	556	39.0%
	1,325		99		1,424	

By Ethnicity

	Bachelor's		Master's		Total	
Hispanic/Latino, Any Race	114	8.7%	7	7.1%	121	8.6%
American Indian/Native Alaskan, non-Hispanic	3	0.2%	0	0.0%	3	0.2%
Asian, non-Hispanic	60	4.6%	2	2.0%	62	4.4%
Hawaiian/Pacific Islander, non-Hispanic	3	0.2%	0	0.0%	3	0.2%
Black, non-Hispanic	57	4.3%	1	1.0%	58	4.1%
White, non-Hispanic	1,061	80.7%	89	89.9%	1,150	81.4%
Multiple Races, non-Hispanic	16	1.2%	0	0.0%	16	1.1%
Missing	11	N/A	0	0.0%	11	N/A
	1,325		99		1,424	

By Citizenship

	Bachelor's		Master's		Total	
U.S. Citizen/Permanent Resident	1,298	98.0%	99	100.0%	1,397	98.1%
non-Citizen/non-Resident	27	2.0%	0	0.0%	27	1.9%
	1,325		99		1,424	

By Ethnicity and Citizenship

	Bachelor's		Master's		Total	
Hispanic/Latino, Any Race	114	8.7%	7	7.1%	121	8.6%
American Indian/Native Alaskan, non-Hispanic	3	0.2%	0	0.0%	3	0.2%
Asian, non-Hispanic	52	4.0%	2	2.0%	54	3.8%
Hawaiian/Pacific Islander, non-Hispanic	3	0.2%	0	0.0%	3	0.2%
Black, non-Hispanic	54	4.1%	1	1.0%	55	3.9%
White, non-Hispanic	1,048	79.6%	89	89.9%	1,137	80.4%
Multiple Races, non-Hispanic	15	1.1%	0	0.0%	15	1.1%
non-Citizen/non-Resident	27	2.1%	0	0.0%	27	1.9%
Missing	9	N/A	0	N/A	9	N/A
	1,325		99		1,424	

By Status When First Admitted

	Bachelor's		Master's		Total	
Regular Admit	559	42.2%	99	100.0%	658	46.2%
Special Admit	68	5.1%	0	0.0%	68	4.8%
EOF Admit	52	3.9%	0	0.0%	52	3.7%
Transfer Admit	631	47.6%	0	0.0%	631	44.3%
EOF Transfer Admit	15	1.1%	0	0.0%	15	1.1%
	1,325		99		1,424	

By Degree Type

	Bachelor's		Master's		Total	
Bachelor of Arts (BA)	727	54.9%	0	0.0%	727	51.1%
Bachelor of Science (BS)	469	35.4%	0	0.0%	469	32.9%
Bachelor of Science in Nursing (BSN)	95	7.2%	0	0.0%	95	6.7%
Bachelor of Social Work (BSW)	34	2.6%	0	0.0%	34	2.4%
Master of Arts in Liberal Studies (MALS)	0	0.0%	8	8.1%	8	0.6%
Master of Business Administration (MBA)	0	0.0%	0	0.0%	0	0.0%
Master of Science in Educational Technology (MSET)	0	0.0%	73	73.7%	73	5.1%
Master of Science in Nursing (MSN)	0	0.0%	18	18.2%	18	1.3%
	1,325		99		1,424	

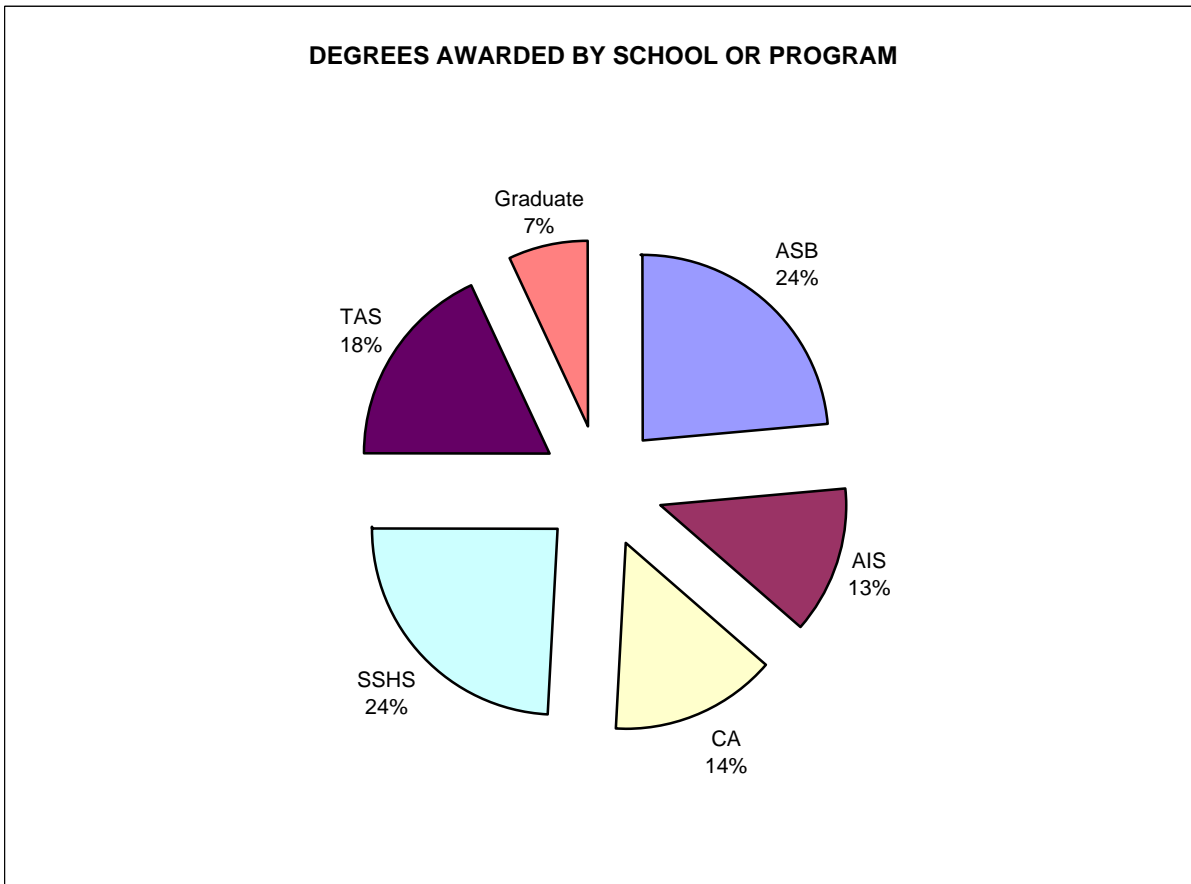
TOTAL 2010-11 DEGREES AWARDED = 1,424

	Bachelor of Arts (BA)		Bachelor of Science (BS)		Bachelor of Science in Nursing (BSN)		Bachelor of Social Work (BSW)		Master of Arts in Liberal Studies (MALS)		Master of Business Admin. (MBA)		Master of Science in Ed. Tech. (MSET)		Master of Science in Nursing (MSN)	
	Number	Percent	Number	Percent	Number	Percent	Number	Percent	Number	Percent	Number	Percent	Number	Percent	Number	Percent
By Age																
Less than 20	1	0.1%	0	0.0%	0	0.0%	0	0.0%	0	0.0%	0	N/A	0	0.0%	0	0.0%
20 to 24	591	81.3%	387	82.5%	68	71.6%	24	70.6%	0	0.0%	0	N/A	1	1.4%	0	0.0%
25 to 29	90	12.4%	60	12.8%	14	14.7%	5	14.7%	1	12.5%	0	N/A	27	37.0%	6	33.3%
30 to 39	22	3.0%	14	3.0%	8	8.4%	3	8.8%	4	50.0%	0	N/A	23	31.5%	1	5.6%
> 39	23	3.2%	8	1.7%	5	5.3%	2	5.9%	3	37.5%	0	N/A	22	30.1%	11	61.1%
	727		469		95		34		8		0		73		18	
By Sex																
Female	462	63.5%	211	45.0%	90	94.7%	32	94.1%	2	25.0%	0	N/A	54	74.0%	17	94.4%
Male	265	36.5%	258	55.0%	5	5.3%	2	5.9%	6	75.0%	0	N/A	19	26.0%	1	5.6%
	727		469		95		34		8		0		73		18	
By Ethnicity																
Hispanic/Latino, Any Race	71	9.9%	30	6.4%	11	11.6%	2	5.9%	2	25.0%	0	N/A	5	6.8%	0	0.0%
Am. Indian/Native Alaskan, non-Hispanic	2	0.3%	0	0.0%	0	0.0%	1	2.9%	0	0.0%	0	N/A	0	0.0%	0	0.0%
Asian, non-Hispanic	16	2.2%	30	6.4%	14	14.7%	0	0.0%	0	0.0%	0	N/A	1	1.4%	1	5.6%
Hawaiian/Pacific Islander, non-Hispanic	1	0.1%	1	0.2%	1	1.1%	0	0.0%	0	0.0%	0	N/A	0	0.0%	0	0.0%
Black, non-Hispanic	29	4.0%	17	3.6%	7	7.4%	4	11.8%	0	0.0%	0	N/A	1	1.4%	0	0.0%
White, non-Hispanic	590	82.1%	384	82.4%	60	63.2%	27	79.4%	6	75.0%	0	N/A	66	90.4%	17	94.4%
Multiple Races, non-Hispanic	10	1.4%	4	0.9%	2	2.1%	0	0.0%	0	0.0%	0	N/A	0	0.0%	0	0.0%
Missing	8	N/A	3	N/A	0	N/A	0	N/A	0	N/A	0	N/A	0	N/A	0	N/A
	727		469		95		34		8		0		73		18	
By Citizenship																
U.S. Citizen	717	98.6%	457	97.4%	90	94.7%	34	100.0%	8	100.0%	0	N/A	73	100.0%	18	100.0%
non-Citizen	10	1.4%	12	2.6%	5	5.3%	0	0.0%	0	0.0%	0	N/A	0	0.0%	0	0.0%
	727		469		95		34		8		0		73		18	
By Ethnicity & Citizenship																
Hispanic/Latino, Any Race	71	9.8%	30	6.4%	11	11.6%	2	5.9%	2	25.0%	0	N/A	5	6.8%	0	0.0%
Am. Indian/Native Alaskan, non-Hispanic	2	0.3%	0	0.0%	0	0.0%	1	2.9%	0	0.0%	0	N/A	0	0.0%	0	0.0%
Asian, non-Hispanic	15	2.1%	26	5.6%	11	11.6%	0	0.0%	0	0.0%	0	N/A	1	1.4%	1	5.6%
Hawaiian/Pacific Islander, non-Hispanic	1	0.1%	1	0.2%	1	1.1%	0	0.0%	0	0.0%	0	N/A	0	0.0%	0	0.0%
Black, non-Hispanic	28	3.9%	17	3.6%	5	5.3%	4	11.8%	0	0.0%	0	N/A	1	1.4%	0	0.0%
White, non-Hispanic	585	81.1%	376	80.7%	60	63.2%	27	79.4%	6	75.0%	0	N/A	66	90.4%	17	94.4%
Multiple Races, non-Hispanic	9	1.2%	4	0.9%	2	2.1%	0	0.0%	0	0.0%	0	N/A	0	0.0%	0	0.0%
Nonresident Alien	10	1.4%	12	2.6%	5	5.3%	0	0.0%	0	0.0%	0	N/A	0	0.0%	0	0.0%
Missing	6	N/A	3	N/A	0	N/A	0	N/A	0	N/A	0	N/A	0	N/A	0	N/A
	727		469		95		34		8		0		73		18	
By Initial Admit Type																
Regular	278	38.2%	218	46.5%	53	55.8%	10	29.4%	8	100.0%	0	N/A	73	100.0%	18	100.0%
Special	40	5.5%	21	4.5%	6	6.3%	1	2.9%	0	0.0%	0	N/A	0	0.0%	0	0.0%
EOF	32	4.4%	12	2.6%	5	5.3%	3	8.8%	0	0.0%	0	N/A	0	0.0%	0	0.0%
Transfer	367	50.5%	214	45.6%	31	32.6%	19	55.9%	0	0.0%	0	N/A	0	0.0%	0	0.0%
EOF Transfer	10	1.4%	4	0.9%	0	0.0%	1	2.9%	0	0.0%	0	N/A	0	0.0%	0	0.0%
	727		469		95		34		8		0		73		18	

TOTAL 2010-11 DEGREES AWARDED = 1,424

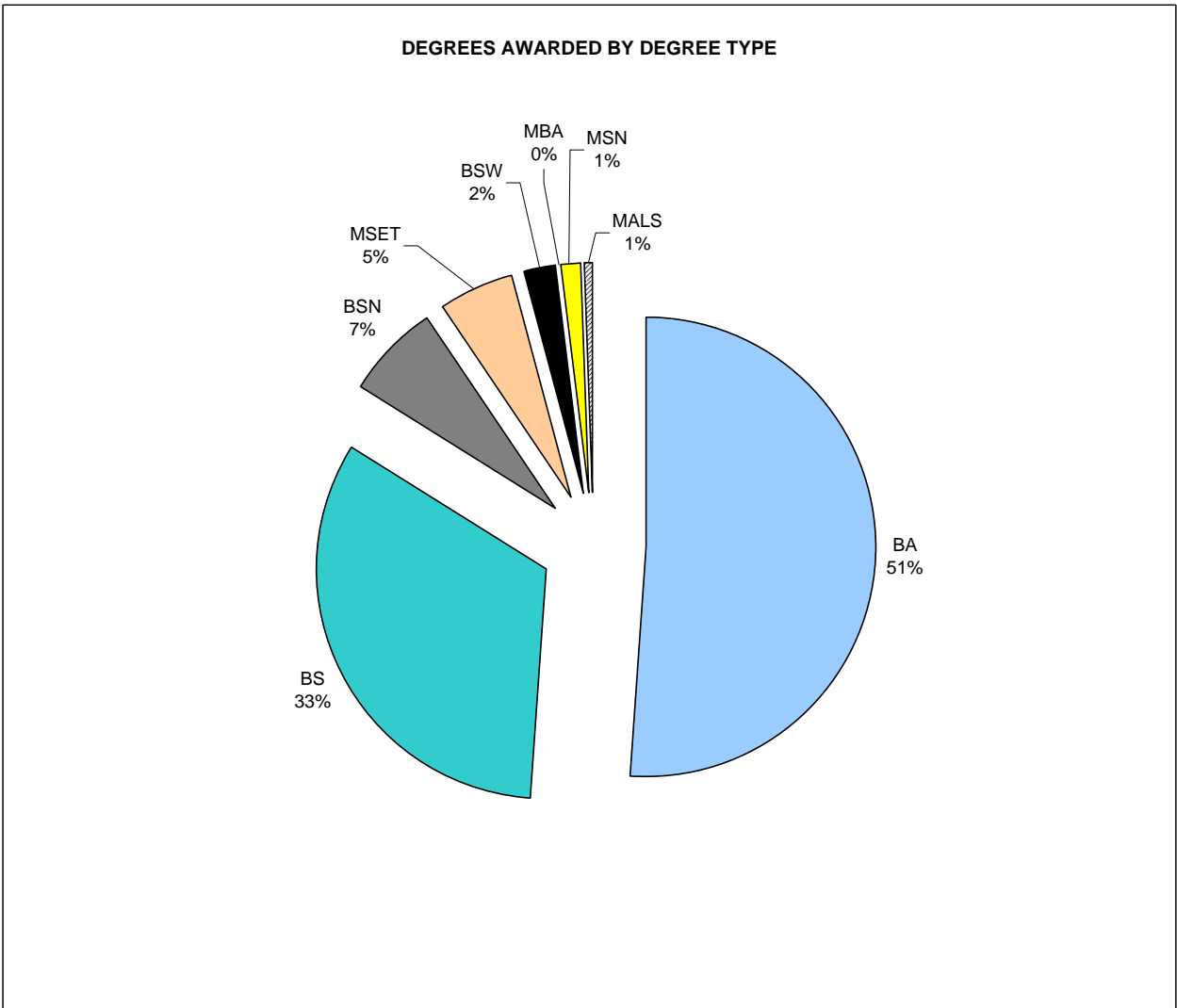
By School and Combined Graduate Programs

Anisfield School of Business	336	23.6%
American and International Studies	184	12.9%
Contemporary Arts	203	14.3%
Social Science and Human Services	346	24.3%
Theoretical and Applied Sciences	256	18.0%
Graduate Degree Programs (combined)	99	7.0%
Total:	1,424	



TOTAL 2010-11 DEGREES AWARDED = 1,424

School or Program	BA		BS		BSN		BSW		MA		MBA		MSET		MSN	
	No.	Pct.	No.	Pct.	No.	Pct.	No.	Pct.	No.	Pct.	No.	Pct.	No.	Pct.	No.	Pct.
Anisfield School of Business	28	3.9%	308	65.7%	0	0.0%	0	0.0%	0	0.0%	0	N/A	0	0.0%	0	0.0%
American & Int'l. Studies	184	25.3%	0	0.0%	0	0.0%	0	0.0%	0	0.0%	0	N/A	0	0.0%	0	0.0%
Contemporary Arts	203	27.9%	0	0.0%	0	0.0%	0	0.0%	0	0.0%	0	N/A	0	0.0%	0	0.0%
Soc. Science & Human Services	312	42.9%	0	0.0%	0	0.0%	34	100.0%	0	0.0%	0	N/A	0	0.0%	0	0.0%
Theoretical & Applied Science	0	0.0%	161	34.3%	95	100.0%	0	0.0%	0	0.0%	0	N/A	0	0.0%	0	0.0%
Grad. Liberal Studies (MALS)	0	0.0%	0	0.0%	0	0.0%	0	0.0%	8	100.0%	0	N/A	0	0.0%	0	0.0%
Grad. Business Admin. (MBA)	0	0.0%	0	0.0%	0	0.0%	0	0.0%	0	0.0%	0	N/A	0	0.0%	0	0.0%
Grad. Educational Tech. (MSET)	0	0.0%	0	0.0%	0	0.0%	0	0.0%	0	0.0%	0	N/A	73	100.0%	0	0.0%
Grad. Nursing (MSN)	0	0.0%	0	0.0%	0	0.0%	0	0.0%	0	0.0%	0	N/A	0	0.0%	18	100.0%
	727		469		95		34		8		0		73		18	

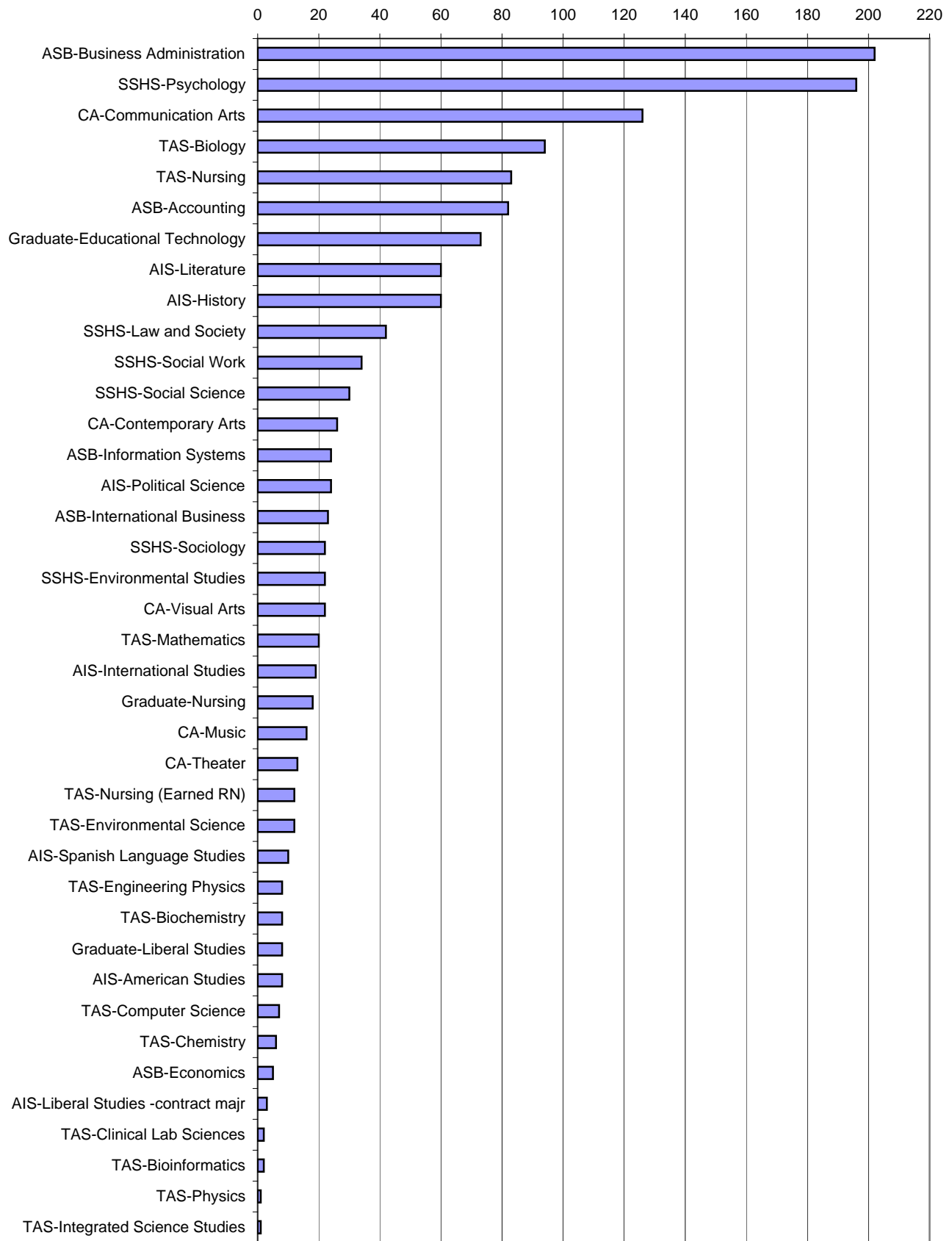


TOTAL 2010-11 DEGREES AWARDED = 1,424

By School and Major (with Graduate Programs)

ASB	Accounting	82	5.8%
	Business Administration	202	14.2%
	Economics	5	0.4%
	Information Systems	24	1.7%
	International Business	23	1.6%
AIS	American Studies	8	0.6%
	History	60	4.2%
	International Studies	19	1.3%
	Liberal Studies	3	0.2%
	Literature	60	4.2%
	Political Science	24	1.7%
CA	Spanish Language Arts	10	0.7%
	Communication Arts	126	8.8%
	Contemporary Arts	26	1.8%
	Music	16	1.1%
	Theater	13	0.9%
SSHS	Visual Arts	22	1.5%
	Environmental Studies	22	1.5%
	Law and Society	42	2.9%
	Psychology	196	13.8%
	Social Science	30	2.1%
	Social Work	34	2.4%
TAS	Sociology	22	1.5%
	Biochemistry	8	0.6%
	Bioinformatics	2	0.1%
	Biology	94	6.6%
	Chemistry	6	0.4%
	Clinical Lab Science	2	0.1%
	Computer Science	7	0.5%
	Engineering Physics	8	0.6%
	Environmental Science	12	0.8%
	Integrated Science Studies	1	0.1%
	Mathematics	20	1.4%
	Nursing	95	6.7%
GRADUATE PROGRAMS	Physics	1	0.1%
	Liberal Studies	8	0.6%
	Educational Technology	73	5.1%
	Nursing	18	1.3%
	Total:	1424	100.0%

DEGREES AWARDED 2010-11 BY SCHOOL AND MAJOR/PROGRAM

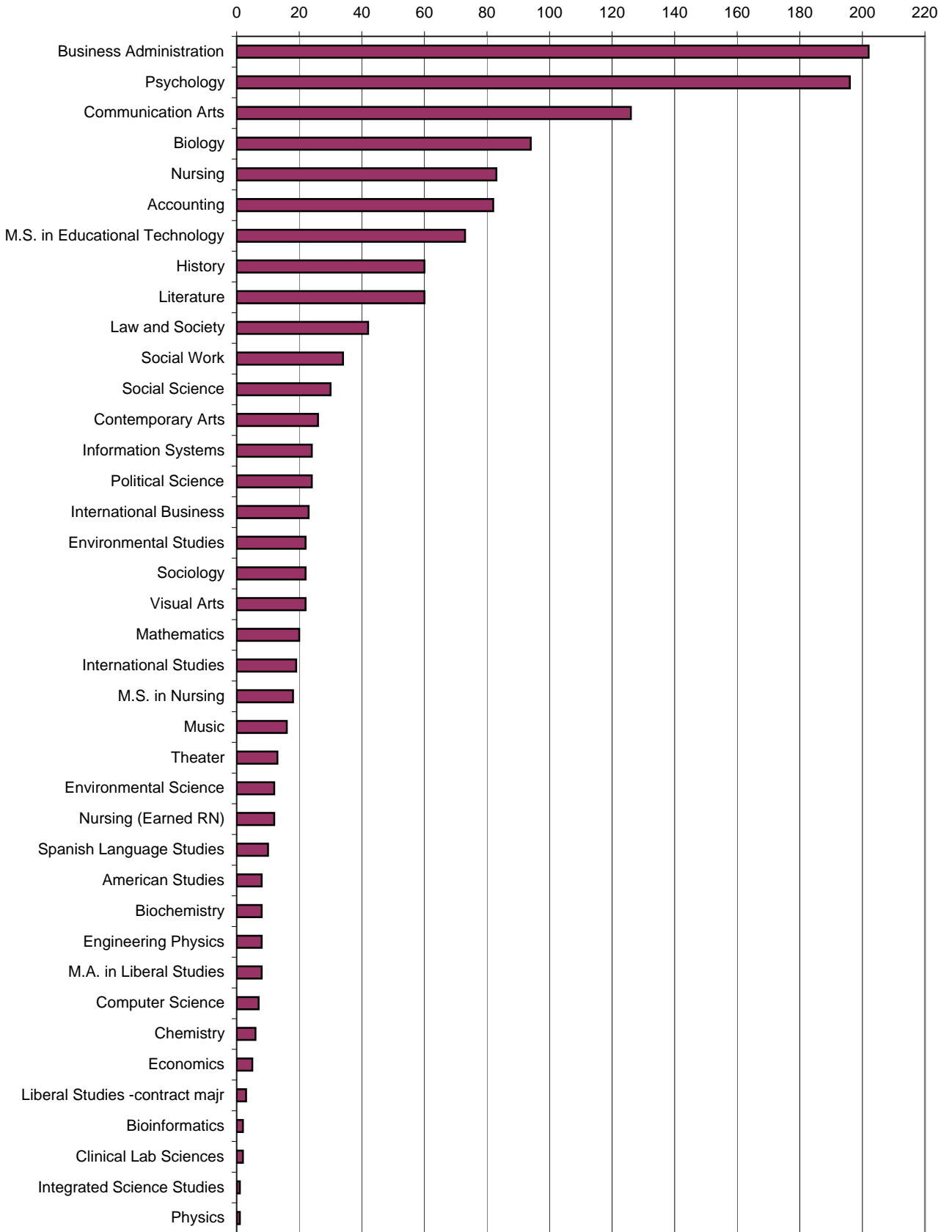


TOTAL 2010-11 DEGREES AWARDED = 1,424

By Major or Graduate Program

Accounting	82	5.8%
American Studies	8	0.6%
Biochemistry	8	0.6%
Bioinformatics	2	0.1%
Biology	94	6.6%
Business Administration	202	14.2%
Chemistry	6	0.4%
Clinical Lab Sciences	2	0.1%
Communication Arts	126	8.8%
Computer Science	7	0.5%
Contemporary Arts	26	1.8%
Economics	5	0.4%
Master of Science in Educational Technology	73	5.1%
Engineering Physics	8	0.6%
Environmental Science	12	0.8%
Environmental Studies	22	1.5%
History	60	4.2%
Information Systems	24	1.7%
Integrated Science Studies	1	0.1%
International Business	23	1.6%
International Studies	19	1.3%
Law and Society	42	2.9%
Master of Arts in Liberal Studies	8	0.6%
Liberal Studies -contract major	3	0.2%
Literature	60	4.2%
Mathematics	20	1.4%
Music	16	1.1%
Nursing	83	5.8%
Nursing (Earned RN)	12	0.8%
Master of Science in Nursing	18	1.3%
Physics	1	0.1%
Political Science	24	1.7%
Psychology	196	13.8%
Social Science	30	2.1%
Social Work	34	2.4%
Sociology	22	1.5%
Spanish Language Studies	10	0.7%
Theater	13	0.9%
Visual Arts	22	1.5%
Total:	1,424	100.0%

2010-11 DEGREES AWARDED BY MAJOR

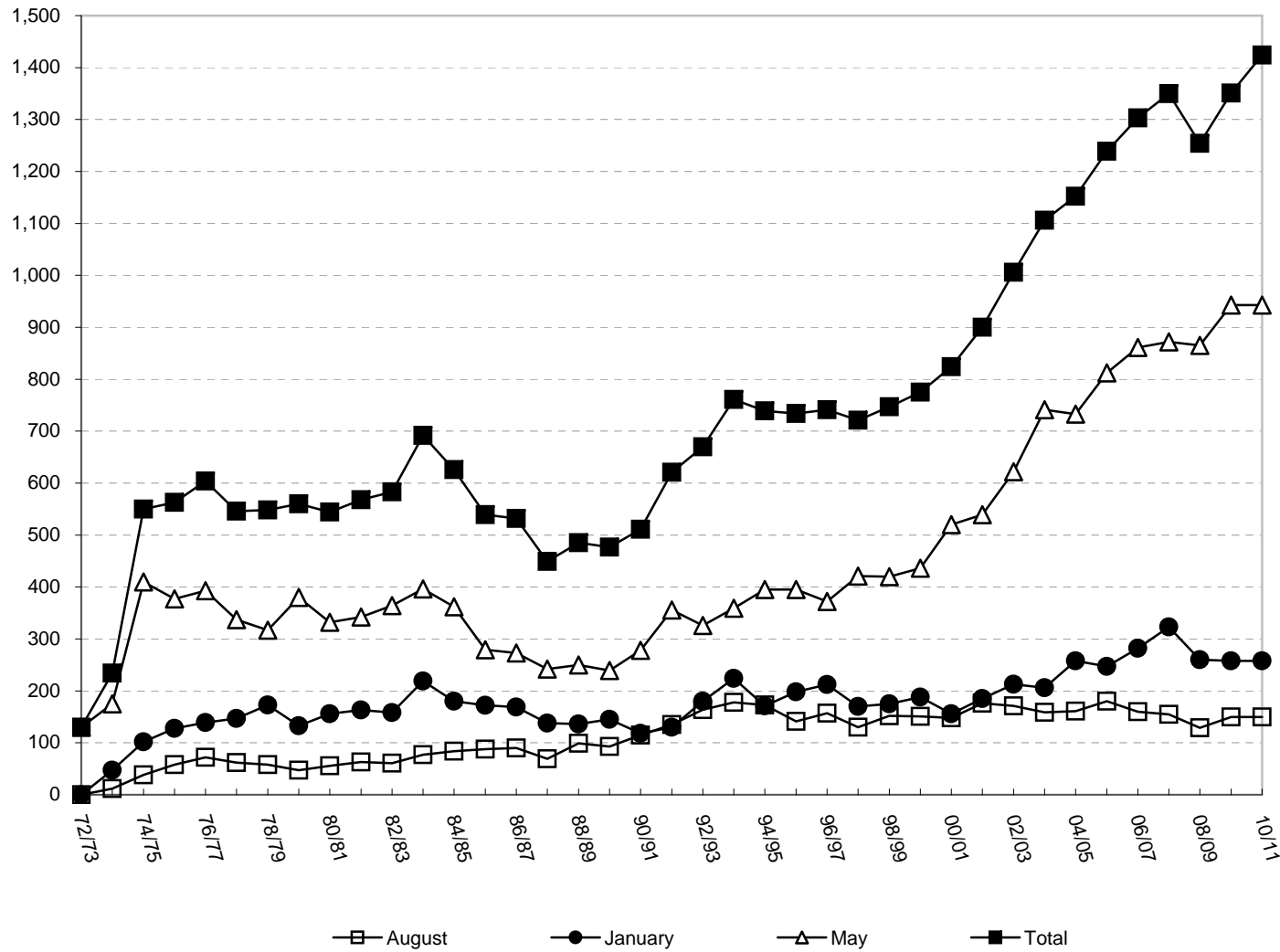


TOTAL DEGREES AWARDED 1972 TO 2010-11

Year	AUGUST DEGREES			JANUARY DEGREES			MAY DEGREES			TOTAL FISCAL YEAR DEGREES			CUMULATIVE DEGREES AWARDED SINCE 1972-73
	Number of Degrees Awarded	Percent Change From Previous August	Cumulative Percent Change From Aug. 1973	Number of Degrees Awarded	Percent Change From Previous January	Cumulative Percent Change From Jan. 1974	Number of Degrees Awarded	Percent Change From Previous May	Cumulative Percent Change From May 1973	Number of Degrees Awarded	Percent Change From Previous Fiscal Year	Cumulative Percent Change From 1972-73	
1972-73	N/A	N/A	N/A	N/A	N/A	N/A	130	N/A	0.0%	130	N/A	0.0%	130
1973-74	12	N/A	0.0%	47	N/A	0.0%	175	34.6%	34.6%	234	80.0%	80.0%	364
1974-75	38	216.7%	216.7%	102	117.0%	117.0%	410	134.3%	215.4%	550	135.0%	323.1%	914
1975-76	58	52.6%	383.3%	128	25.5%	172.3%	377	-8.0%	190.0%	563	2.4%	333.1%	1,477
1976-77	72	24.1%	500.0%	139	8.6%	195.7%	393	4.2%	202.3%	604	7.3%	364.6%	2,081
1977-78	62	-13.9%	416.7%	147	5.8%	212.8%	337	-14.2%	159.2%	546	-9.6%	320.0%	2,627
1978-79	58	-6.5%	383.3%	173	17.7%	268.1%	317	-5.9%	143.8%	548	0.4%	321.5%	3,175
1979-80	47	-19.0%	291.7%	133	-23.1%	183.0%	380	19.9%	192.3%	560	2.2%	330.8%	3,735
1980-81	56	19.1%	366.7%	156	17.3%	231.9%	332	-12.6%	155.4%	544	-2.9%	318.5%	4,279
1981-82	63	12.5%	425.0%	163	4.5%	246.8%	342	3.0%	163.1%	568	4.4%	336.9%	4,847
1982-83	61	-3.2%	408.3%	158	-3.1%	236.2%	364	6.4%	180.0%	583	2.6%	348.5%	5,430
1983-84	77	26.2%	541.7%	219	38.6%	366.0%	396	8.8%	204.6%	692	18.7%	432.3%	6,122
1984-85	84	9.1%	600.0%	180	-17.8%	283.0%	362	-8.6%	178.5%	626	-9.5%	381.5%	6,748
1985-86	88	4.8%	633.3%	172	-4.4%	266.0%	279	-22.9%	114.6%	539	-13.9%	314.6%	7,287
1986-87	90	2.3%	650.0%	169	-1.7%	259.6%	273	-2.2%	110.0%	532	-1.3%	309.2%	7,819
1987-88	69	-23.3%	475.0%	138	-18.3%	193.6%	242	-11.4%	86.2%	449	-15.6%	245.4%	8,268
1988-89	99	43.5%	725.0%	136	-1.4%	189.4%	250	3.3%	92.3%	485	8.0%	273.1%	8,753
1989-90	93	-6.1%	675.0%	145	6.6%	208.5%	239	-4.4%	83.8%	477	-1.6%	266.9%	9,230
1990-91	115	23.7%	858.3%	118	-18.6%	151.1%	278	16.3%	113.8%	511	7.1%	293.1%	9,741
1991-92	135	17.4%	1025.0%	130	10.2%	176.6%	356	28.1%	173.8%	621	21.5%	377.7%	10,362
1992-93	164	21.5%	1266.7%	180	38.5%	283.0%	326	-8.4%	150.8%	670	7.9%	415.4%	11,032
1993-94	178	8.5%	1383.3%	224	24.4%	376.6%	359	10.1%	176.2%	761	13.6%	485.4%	11,793
1994-95	173	-2.8%	1341.7%	171	-23.7%	263.8%	395	10.0%	203.8%	739	-2.9%	468.5%	12,532
1995-96	141	-18.5%	1075.0%	198	15.8%	321.3%	395	0.0%	203.8%	734	-0.7%	464.6%	13,266
1996-97	157	11.3%	1208.3%	212	7.1%	351.1%	372	-5.8%	186.2%	741	1.0%	470.0%	14,007
1997-98	130	-17.2%	983.3%	170	-19.8%	261.7%	421	13.2%	223.8%	721	-2.7%	454.6%	14,728
1998-99	152	16.9%	1166.7%	175	2.9%	272.3%	420	-0.2%	223.1%	747	3.6%	474.6%	15,475
1999-00	151	-0.7%	1158.3%	188	7.4%	300.0%	436	3.8%	235.4%	775	3.7%	496.2%	16,250
2000-01	148	-2.0%	1133.3%	156	-17.0%	231.9%	520	19.3%	300.0%	824	6.3%	533.8%	17,074
2001-02	176	18.9%	1366.7%	185	18.6%	293.6%	539	3.7%	314.6%	900	9.2%	592.3%	17,974
2002-03	171	-2.8%	1325.0%	213	15.1%	353.2%	622	15.4%	378.5%	1,006	11.8%	673.8%	18,980
2003-04	159	-7.0%	1225.0%	206	-3.3%	338.3%	741	19.1%	470.0%	1,106	9.9%	750.8%	20,086
2004-05	161	1.3%	1241.7%	258	25.2%	448.9%	733	-1.1%	463.8%	1,152	4.2%	786.2%	21,238
2005-06	180	11.8%	1400.0%	247	-4.3%	425.5%	812	10.8%	524.6%	1,239	7.6%	853.1%	22,477
2006-07	160	-11.1%	1233.3%	282	14.2%	500.0%	861	6.0%	562.3%	1,303	5.2%	902.3%	23,780
2007-08	155	-3.1%	1191.7%	323	14.5%	587.2%	872	1.3%	570.8%	1,350	3.6%	938.5%	25,130
2008-09	129	-16.8%	975.0%	260	-19.5%	453.2%	865	-0.8%	565.4%	1,254	-7.1%	864.6%	26,384
2009-10	150	16.3%	1150.0%	258	-0.8%	448.9%	943	9.0%	625.4%	1,351	7.7%	939.2%	27,735
2010-11	163	8.7%	1258.3%	296	14.7%	529.8%	965	2.3%	642.3%	1,424	5.4%	995.4%	29,159

* Degrees are reported on a fiscal year basis. For example, 2010-11 graduates include degree recipients from August 2010, January 2011, and May 2011.

DEGREES AWARDED BY FISCAL YEAR, 1972-73 TO 2010-11



DEGREES AWARDED BY AGE, 2006-07 TO 2010-11

Bachelor's	2006-07		2007-08		2008-09		2009-10		2010-11		Pct. Change 06/07 to 10/11	Pct. Change 09/10 to 10/11
	No.	Pct.	No.	Pct.	No.	Pct.	No.	Pct.	No.	Pct.		
Less Than 20	1	0.1%	0	0.0%	0	0.0%	0	0.0%	1	0.1%	0.0%	N/A
20 to 24	869	72.0%	928	75.2%	874	76.5%	997	79.3%	1,070	80.8%	23.1%	7.3%
25 to 29	193	16.0%	199	16.1%	173	15.1%	158	12.6%	169	12.8%	-12.4%	7.0%
30 to 39	78	6.5%	51	4.1%	53	4.6%	60	4.8%	47	3.5%	-39.7%	-21.7%
40 and Over	66	5.5%	56	4.5%	42	3.7%	43	3.4%	38	2.9%	-42.4%	-11.6%
Total	1,207		1,234		1,142		1,258		1,325		9.8%	5.3%

Graduate	2006-07		2007-08		2008-09		2009-10		2010-11		Pct. Change 06/07 to 10/11	Pct. Change 09/10 to 10/11
	No.	Pct.	No.	Pct.	No.	Pct.	No.	Pct.	No.	Pct.		
Less Than 20	0	0.0%	0	0.0%	0	0.0%	0	0.0%	0	0.0%	N/A	N/A
20 to 24	0	0.0%	0	0.0%	2	1.8%	2	2.2%	1	1.0%	N/A	-50.0%
25 to 29	20	20.8%	39	33.6%	31	27.7%	18	19.4%	34	34.3%	70.0%	88.9%
30 to 39	29	30.2%	22	19.0%	44	39.3%	30	32.3%	28	28.3%	-3.4%	-6.7%
40 and Over	47	49.0%	55	47.4%	35	31.3%	43	46.2%	36	36.4%	-23.4%	-16.3%
Total	96		116		112		93		99		3.1%	6.5%

Total	2006-07		2007-08		2008-09		2009-10		2010-11		Pct. Change 06/07 to 10/11	Pct. Change 09/10 to 10/11
	No.	Pct.	No.	Pct.	No.	Pct.	No.	Pct.	No.	Pct.		
Less Than 20	1	0.1%	0	0.0%	0	0.0%	0	0.0%	1	0.1%	0.0%	N/A
20 to 24	869	66.7%	928	68.7%	876	69.9%	999	73.9%	1,071	75.2%	23.2%	7.2%
25 to 29	213	16.3%	238	17.6%	204	16.3%	176	13.0%	203	14.3%	-4.7%	15.3%
30 to 39	107	8.2%	73	5.4%	97	7.7%	90	6.7%	75	5.3%	-29.9%	-16.7%
40 and Over	113	8.7%	111	8.2%	77	6.1%	86	6.4%	74	5.2%	-34.5%	-14.0%
Total	1,303		1,350		1,254		1,351		1,424		9.3%	5.4%



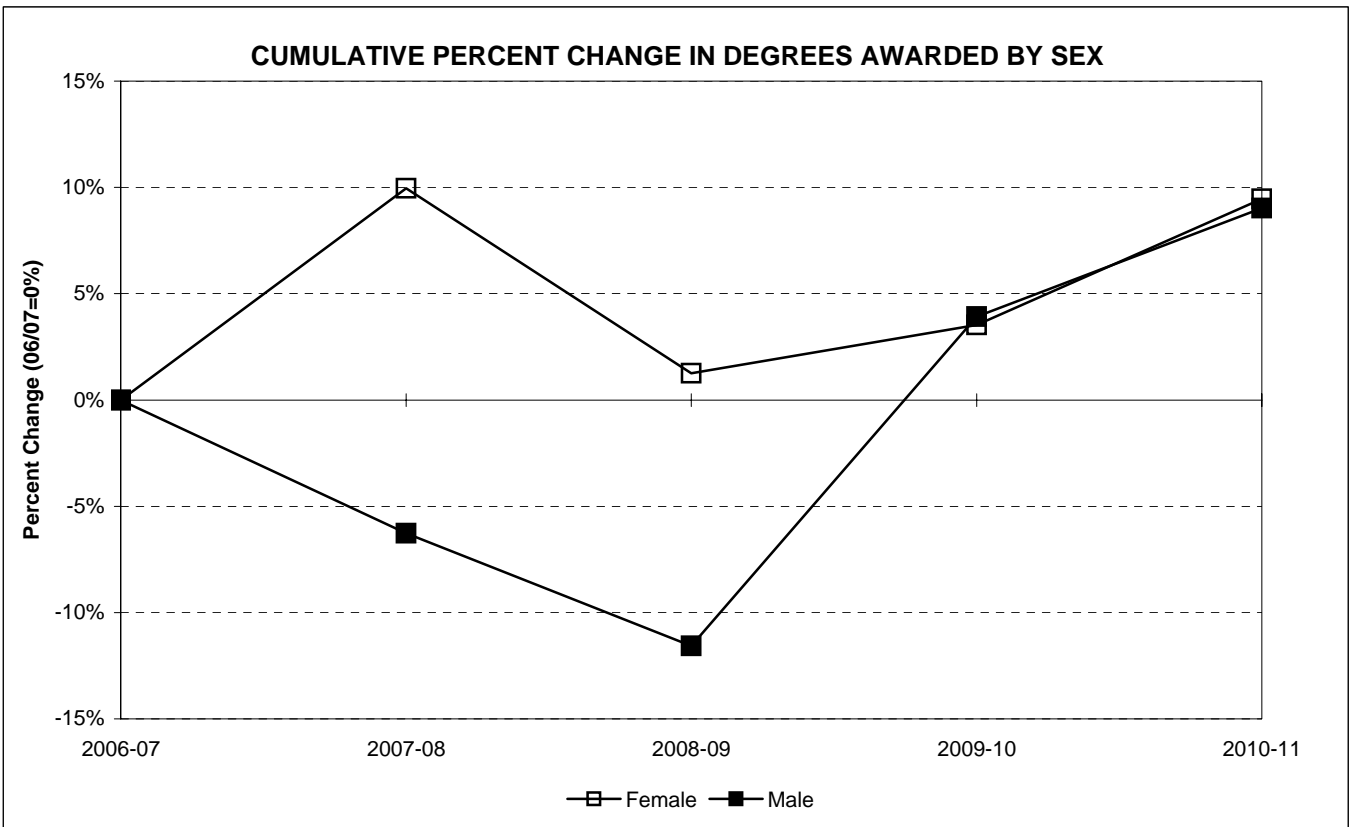
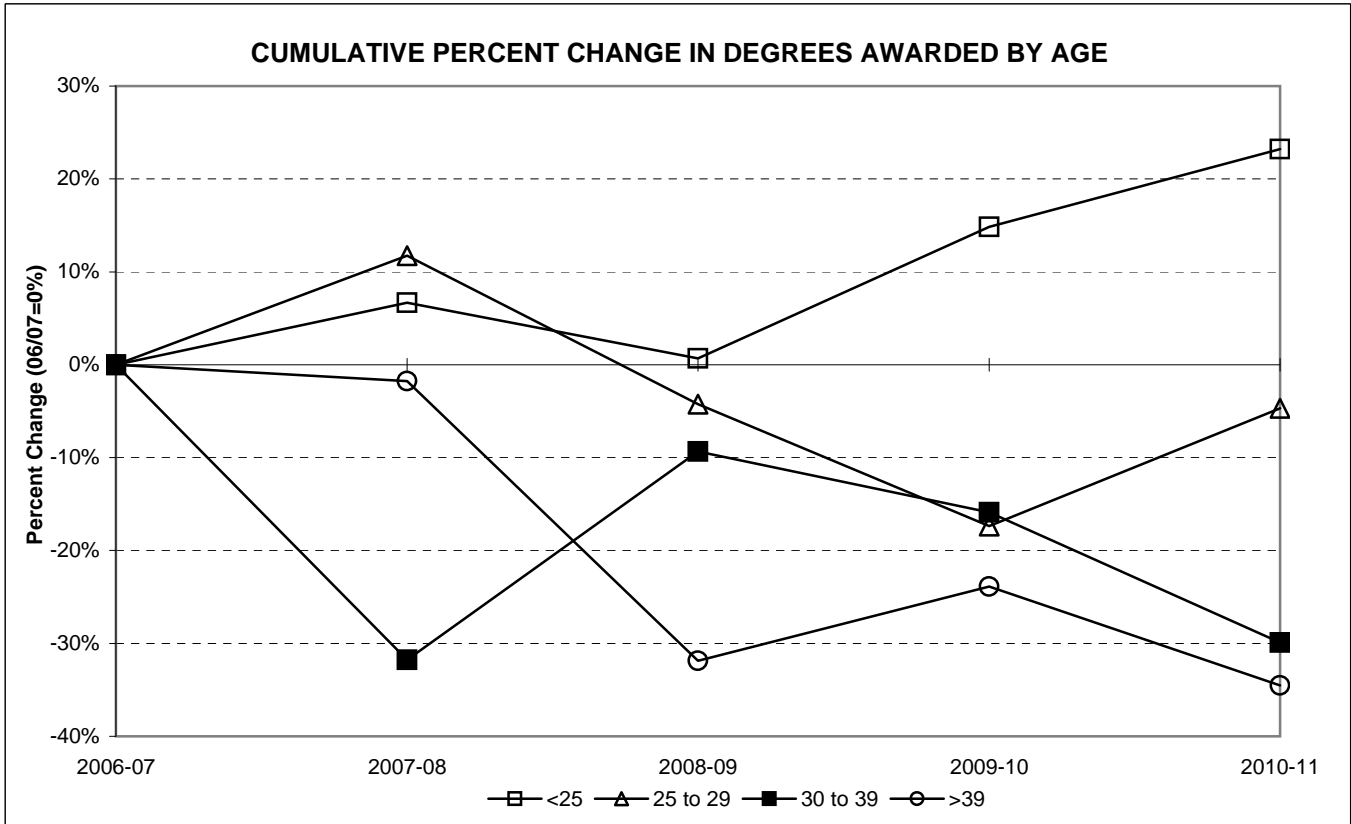
DEGREES AWARDED BY SEX, 2006-07 TO 2010-11

Bachelor's	2006-07		2007-08		2008-09		2009-10		2010-11		Pct. Change 06/07 to 10/11	Pct. Change 09/10 to 10/11
	No.	Pct.	No.	Pct.	No.	Pct.	No.	Pct.	No.	Pct.		
Female	712	59.0%	776	62.9%	721	63.1%	752	59.8%	795	60.0%	11.7%	5.7%
Male	495	41.0%	458	37.1%	421	36.9%	506	40.2%	530	40.0%	7.1%	4.7%
Total	1,207		1,234		1,142		1,258		1,325		9.8%	5.3%

Graduate	2006-07		2007-08		2008-09		2009-10		2010-11		Pct. Change 06/07 to 10/11	Pct. Change 09/10 to 10/11
	No.	Pct.	No.	Pct.	No.	Pct.	No.	Pct.	No.	Pct.		
Female	81	84.4%	96	82.8%	82	73.2%	69	74.2%	73	73.7%	-9.9%	5.8%
Male	15	15.6%	20	17.2%	30	26.8%	24	25.8%	26	26.3%	73.3%	8.3%
Total	96		116		112		93		99		3.1%	6.5%

Total	2006-07		2007-08		2008-09		2009-10		2010-11		Pct. Change 06/07 to 10/11	Pct. Change 09/10 to 10/11
	No.	Pct.	No.	Pct.	No.	Pct.	No.	Pct.	No.	Pct.		
Female	793	60.9%	872	64.6%	803	64.0%	821	60.8%	868	61.0%	9.5%	5.7%
Male	510	39.1%	478	35.4%	451	36.0%	530	39.2%	556	39.0%	9.0%	4.9%
Total	1,303		1,350		1,254		1,351		1,424		9.3%	5.4%

TOTAL 2010-11 DEGREES AWARDED = 1,424



DEGREES AWARDED BY ETHNICITY^[1], 2006-07 TO 2010-11

Bachelor's	2006-07		2007-08		2008-09		2009-10		2010-11		Pct. Change 06/07 to 10/11	Pct. Change 09/10 to 10/11
	No.	Pct.	No.	Pct.	No.	Pct.	No.	Pct.	No.	Pct.		
Hispanic/Latino, Any Race	89	7.4%	83	6.7%	97	8.5%	101	8.1%	114	8.7%	28.1%	12.9%
Am. Indian/Native Alaskan, non-Hispanic	6	0.5%	0	0.0%	3	0.3%	1	0.1%	3	0.2%	-50.0%	200.0%
Asian, non-Hispanic ^[1]	69	5.7%	57	4.6%	55	4.8%	50	4.0%	60	4.6%	N/A	20.0%
Hawaiian/Pacific Islander, non-Hispanic ^[1]	N/A	0.0%	N/A	0.0%	N/A	0.0%	3	0.2%	3	0.2%	N/A	0.0%
Black, non-Hispanic	77	6.4%	69	5.6%	55	4.8%	53	4.2%	57	4.3%	-26.0%	7.5%
White, non-Hispanic	966	80.0%	1,025	83.1%	932	81.6%	1,017	81.4%	1,061	80.7%	9.8%	4.3%
Multiple Races, non-Hispanic ^[1]	N/A	0.0%	N/A	0.0%	N/A	0.0%	25	2.0%	16	1.2%	N/A	-36.0%
Missing	0	N/A	0	N/A	0	N/A	8	N/A	11	N/A	N/A	N/A
Total	1,207		1,234		1,142		1,258		1,325		9.8%	5.3%

Graduate	2006-07		2007-08		2008-09		2009-10		2010-11		Pct. Change 06/07 to 10/11	Pct. Change 09/10 to 10/11
	No.	Pct.	No.	Pct.	No.	Pct.	No.	Pct.	No.	Pct.		
Hispanic/Latino, Any Race	3	3.1%	1	0.9%	6	5.4%	2	2.2%	7	7.1%	133.3%	250.0%
Am. Indian/Native Alaskan, non-Hispanic	0	0.0%	0	0.0%	0	0.0%	0	0.0%	0	0.0%	N/A	N/A
Asian, non-Hispanic ^[1]	4	4.2%	3	2.6%	4	3.6%	1	1.1%	2	2.0%	N/A	100.0%
Hawaiian/Pacific Islander, non-Hispanic ^[1]	N/A	0.0%	N/A	0.0%	N/A	0.0%	0	0.0%	0	0.0%	N/A	N/A
Black, non-Hispanic	3	3.1%	6	5.2%	4	3.6%	6	6.5%	1	1.0%	-66.7%	-83.3%
White, non-Hispanic	86	89.6%	106	91.4%	98	87.5%	83	89.2%	89	89.9%	3.5%	7.2%
Multiple Races, non-Hispanic ^[1]	N/A	0.0%	N/A	0.0%	N/A	0.0%	1	1.1%	0	0.0%	N/A	-100.0%
Missing	0	N/A	0	N/A	0	N/A	0	N/A	0	N/A	N/A	N/A
Total	96		116		112		93		99		3.1%	6.5%

Total	2006-07		2007-08		2008-09		2009-10		2010-11		Pct. Change 06/07 to 10/11	Pct. Change 09/10 to 10/11
	No.	Pct.	No.	Pct.	No.	Pct.	No.	Pct.	No.	Pct.		
Hispanic/Latino, Any Race	92	7.1%	84	6.2%	103	8.2%	103	7.6%	121	8.6%	31.5%	17.5%
Am. Indian/Native Alaskan, non-Hispanic	6	0.5%	0	0.0%	3	0.2%	1	0.1%	3	0.2%	-50.0%	200.0%
Asian, non-Hispanic ^[1]	73	5.6%	60	4.4%	59	4.7%	51	3.8%	62	4.4%	N/A	21.6%
Hawaiian/Pacific Islander, non-Hispanic ^[1]	0	0.0%	0	0.0%	0	0.0%	3	0.2%	3	0.2%	N/A	0.0%
Black, non-Hispanic	80	6.1%	75	5.6%	59	4.7%	59	4.4%	58	4.1%	-27.5%	-1.7%
White, non-Hispanic	1,052	80.7%	1,131	83.8%	1,030	82.1%	1,100	81.4%	1,150	81.4%	9.3%	4.5%
Multiple Races, non-Hispanic ^[1]	0	0.0%	0	0.0%	0	0.0%	26	1.9%	16	1.1%	N/A	-38.5%
Missing	0	N/A	0	N/A	0	N/A	8	N/A	11	N/A	N/A	N/A
Total	1,303		1,350		1,254		1,351		1,424		9.3%	5.4%



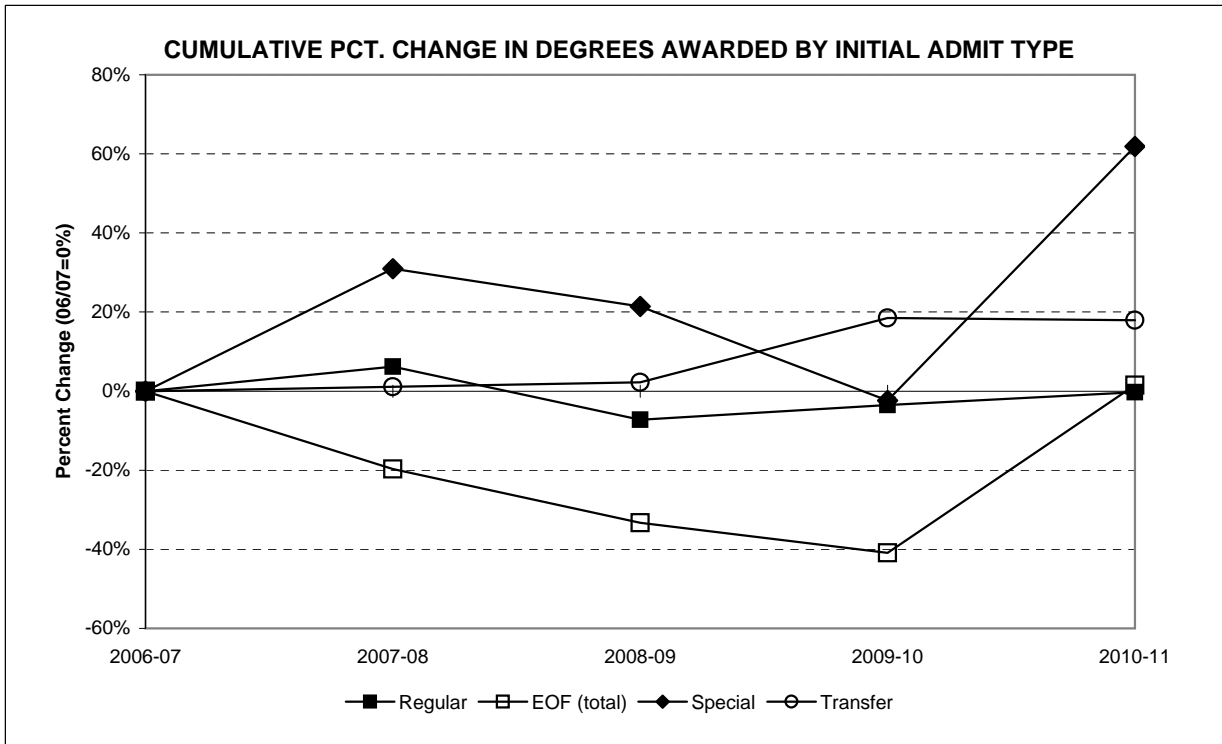
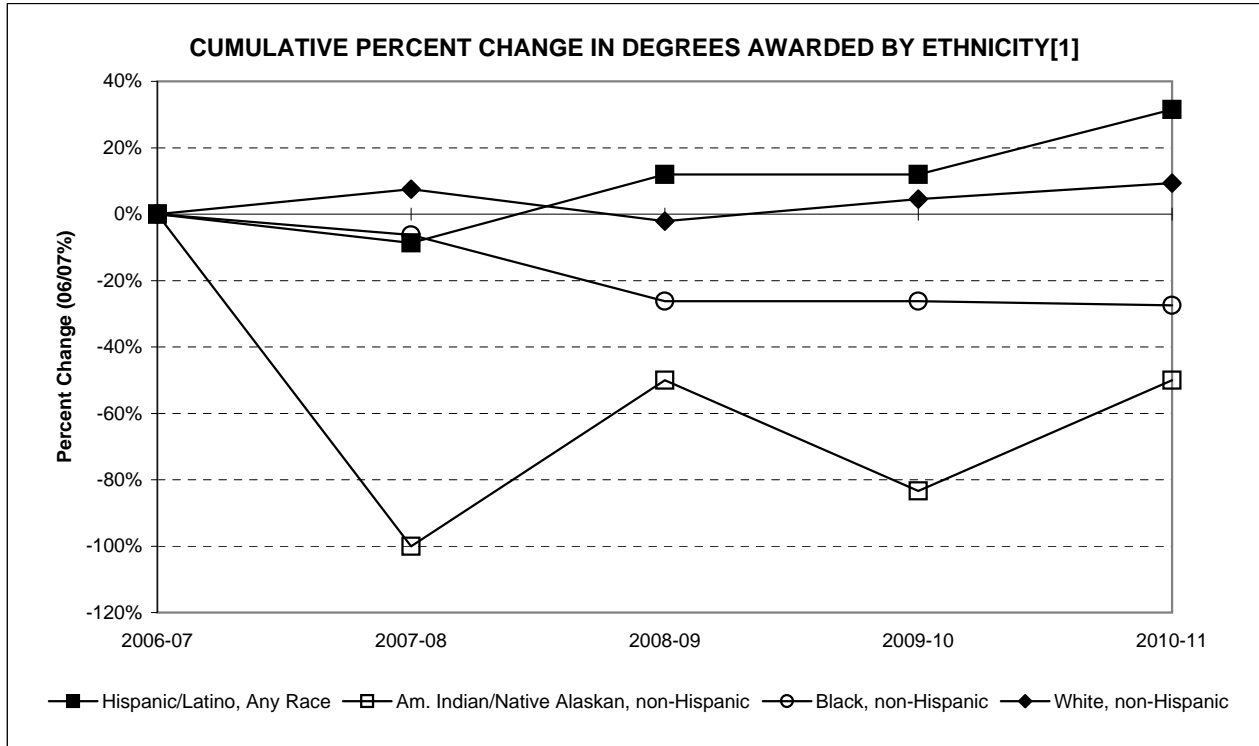
DEGREES AWARDED BY INITIAL ADMISSIONS TYPE, 2006-07 TO 2010-11

Bachelor's	2006-07		2007-08		2008-09		2009-10		2010-11		Pct. Change 06/07 to 10/11	Pct. Change 09/10 to 10/11
	No.	Pct.	No.	Pct.	No.	Pct.	No.	Pct.	No.	Pct.		
Regular	565	46.8%	587	47.6%	500	43.8%	544	43.2%	559	42.2%	-1.1%	2.8%
EOF non-Transfer	53	4.4%	46	3.7%	34	3.0%	34	2.7%	52	3.9%	-1.9%	52.9%
EOF Transfer	13	1.1%	7	0.6%	10	0.9%	5	0.4%	15	1.1%	15.4%	200.0%
Special	42	3.5%	55	4.5%	51	4.5%	41	3.3%	68	5.1%	61.9%	65.9%
Transfer	534	44.2%	539	43.7%	547	47.9%	634	50.4%	631	47.6%	18.2%	-0.5%
Total	1,207		1,234		1,142		1,258		1,325		9.8%	5.3%

Graduate	2006-07		2007-08		2008-09		2009-10		2010-11		Pct. Change 06/07 to 10/11	Pct. Change 09/10 to 10/11
	No.	Pct.	No.	Pct.	No.	Pct.	No.	Pct.	No.	Pct.		
Regular	95	99.0%	114	98.3%	112	100.0%	93	100.0%	99	100.0%	4.2%	6.5%
EOF non-Transfer	0	0.0%	0	0.0%	0	0.0%	0	0.0%	0	0.0%	N/A	N/A
EOF Transfer	0	0.0%	0	0.0%	0	0.0%	0	0.0%	0	0.0%	N/A	N/A
Special	0	0.0%	0	0.0%	0	0.0%	0	0.0%	0	0.0%	N/A	N/A
Transfer	1	1.0%	2	1.7%	0	0.0%	0	0.0%	0	0.0%	N/A	N/A
Total	96		116		112		93		99		3.1%	6.5%

Total	2006-07		2007-08		2008-09		2009-10		2010-11		Pct. Change 06/07 to 10/11	Pct. Change 09/10 to 10/11
	No.	Pct.	No.	Pct.	No.	Pct.	No.	Pct.	No.	Pct.		
Regular	660	50.7%	701	51.9%	612	48.8%	637	47.2%	658	46.2%	-0.3%	3.3%
EOF non-Transfer	53	4.1%	46	3.4%	34	2.7%	34	2.5%	52	3.7%	-1.9%	52.9%
EOF Transfer	13	1.0%	7	0.5%	10	0.8%	5	0.4%	15	1.1%	15.4%	200.0%
Special	42	3.2%	55	4.1%	51	4.1%	41	3.0%	68	4.8%	61.9%	65.9%
Transfer	535	41.1%	541	40.1%	547	43.6%	634	46.9%	631	44.3%	17.9%	-0.5%
Total	1,303		1,350		1,254		1,351		1,424		9.3%	5.4%

[1] New Race/Ethnicity categories came into effect in AY09-10 (as listed in headings on top, left). Until at least two years' data is collected, we can not calculate the percent change for the new non-Hispanic categories for: Asian, Hawaiian/Pacific Islander and Multiple-Races. Prior to 2009-10, the counts above for "Asian, non-Hispanic" were formerly grouped together as "Asian or Pacific Islander."



[1] New Race/Ethnicity categories came into effect in AY09-10 (as listed on page 13, top left). Until a full five years' data is collected, we can not calculate the percent change for the new non-Hispanic categories for: Asian, Hawaiian/Pacific Islander and Multiple-Races.

DEGREES AWARDED BY ETHNICITY^[1] AND CITIZENSHIP, 2006-07 TO 2010-11

Bachelor's	2006-07		2007-08		2008-09		2009-10		2010-11		Pct. Change 06/07 to 10/11	Pct. Change 09/10 to 10/11
	No.	Pct.	No.	Pct.	No.	Pct.	No.	Pct.	No.	Pct.		
Hispanic/Latino, Any Race	88	7.3%	82	6.6%	94	8.2%	101	8.1%	114	8.7%	29.5%	12.9%
Am. Indian/Nat. Alaskan, non-Hispanic	6	0.5%	0	0.0%	3	0.3%	1	0.1%	3	0.2%	-50.0%	200.0%
Asian, non-Hispanic [1]	55	4.6%	50	4.1%	50	4.4%	45	3.6%	52	4.0%	N/A	15.6%
Hawaiian/Pac.Islander, non-Hispanic [1]	--	0.0%	--	0.0%	--	0.0%	3	0.2%	3	0.2%	N/A	0.0%
Black, non-Hispanic	73	6.0%	59	4.8%	48	4.2%	51	4.1%	54	4.1%	-26.0%	5.9%
White, non-Hispanic	950	78.7%	1,010	81.8%	916	80.2%	993	79.2%	1,048	79.6%	10.3%	5.5%
Multiple Races, non-Hispanic [1]	--	0.0%	--	0.0%	--	0.0%	24	1.9%	15	1.1%	N/A	-37.5%
Nonresident Alien	35	2.9%	33	2.7%	31	2.7%	35	2.8%	27	2.1%	-22.9%	-22.9%
Missing	0	N/A	0	N/A	0	N/A	5	N/A	9	N/A	N/A	N/A
Total	1,207		1,234		1,142		1,258		1,325		9.8%	5.3%

Graduate	2006-07		2007-08		2008-09		2009-10		2010-11		Pct. Change 06/07 to 10/11	Pct. Change 09/10 to 10/11
	No.	Pct.	No.	Pct.	No.	Pct.	No.	Pct.	No.	Pct.		
Hispanic/Latino, Any Race	3	3.1%	1	0.9%	6	5.4%	2	2.2%	7	7.1%	133.3%	250.0%
Am. Indian/Nat. Alaskan, non-Hispanic	0	0.0%	0	0.0%	0	0.0%	0	0.0%	0	0.0%	N/A	N/A
Asian, non-Hispanic [1]	4	4.2%	3	2.6%	4	3.6%	1	1.1%	2	2.0%	N/A	100.0%
Hawaiian/Pac.Islander, non-Hispanic [1]	--	0.0%	--	0.0%	--	0.0%	0	0.0%	0	0.0%	N/A	N/A
Black, non-Hispanic	3	3.1%	6	5.2%	3	2.7%	6	6.5%	1	1.0%	-66.7%	-83.3%
White, non-Hispanic	86	89.6%	105	90.5%	96	85.7%	81	87.1%	89	89.9%	3.5%	9.9%
Multiple Races, non-Hispanic [1]	--	0.0%	--	0.0%	--	0.0%	1	1.1%	0	0.0%	N/A	-100.0%
Nonresident Alien	0	0.0%	1	0.9%	3	2.7%	2	2.2%	0	0.0%	N/A	-100.0%
Missing	0	N/A	0	N/A	0	N/A	0	N/A	0	N/A	N/A	N/A
Total	96		116		112		93		99		3.1%	6.5%

Total	2006-07		2007-08		2008-09		2009-10		2010-11		Pct. Change 06/07 to 10/11	Pct. Change 09/10 to 10/11
	No.	Pct.	No.	Pct.	No.	Pct.	No.	Pct.	No.	Pct.		
Hispanic/Latino, Any Race	91	7.0%	83	6.1%	100	8.0%	103	7.7%	121	8.6%	33.0%	17.5%
Am. Indian/Native Alaskan, non-Hispanic	6	0.5%	0	0.0%	3	0.2%	1	0.1%	3	0.2%	-50.0%	200.0%
Asian, non-Hispanic [1]	59	4.5%	53	3.9%	54	4.3%	46	3.4%	54	3.8%	N/A	17.4%
Hawaiian/Pacific Islander, non-Hispanic [1]	0	0.0%	0	0.0%	0	0.0%	3	0.2%	3	0.2%	N/A	0.0%
Black, non-Hispanic	76	5.8%	65	4.8%	51	4.1%	57	4.2%	55	3.9%	-27.6%	-3.5%
White, non-Hispanic	1,036	79.5%	1,115	82.6%	1,012	80.7%	1,074	79.8%	1,137	80.4%	9.7%	5.9%
Multiple Races, non-Hispanic [1]	0	0.0%	0	0.0%	0	0.0%	25	1.9%	15	1.1%	NA	-40.0%
Nonresident Alien	35	2.7%	34	2.5%	34	2.7%	37	2.7%	27	1.9%	-22.9%	-27.0%
Missing	0	N/A	0	N/A	0	N/A	5	N/A	9	N/A	NA	80.0%
Total	1,303		1,350		1,254		1,351		1,424		9.3%	5.4%



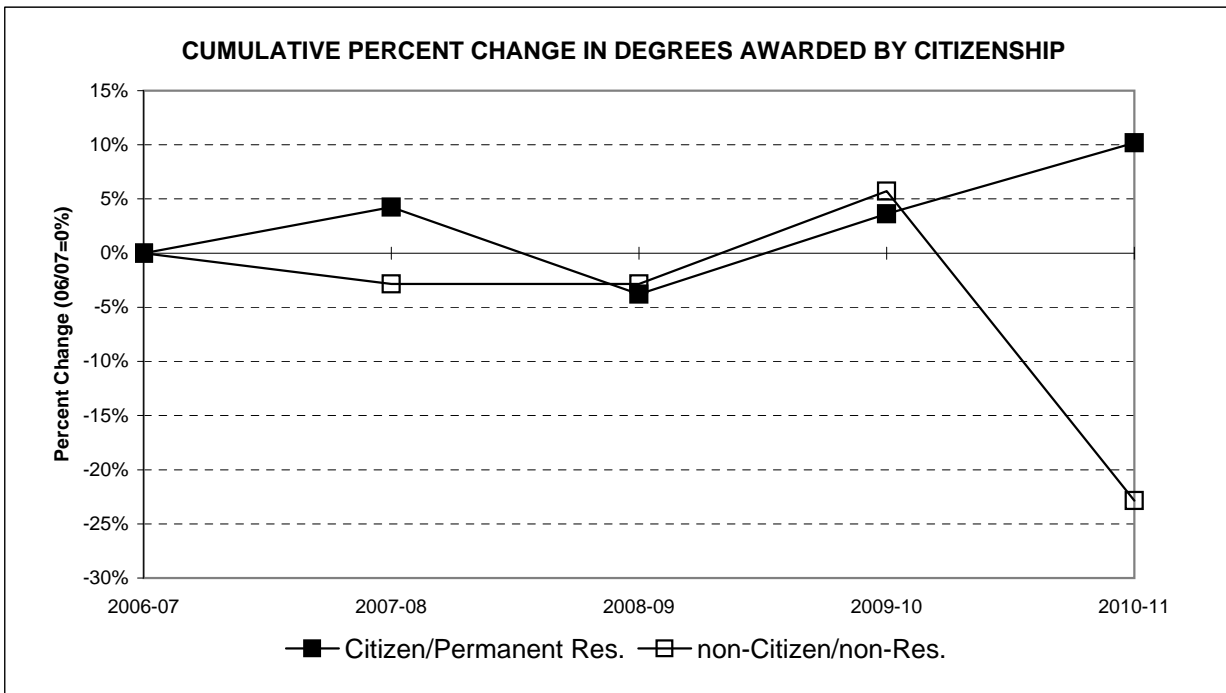
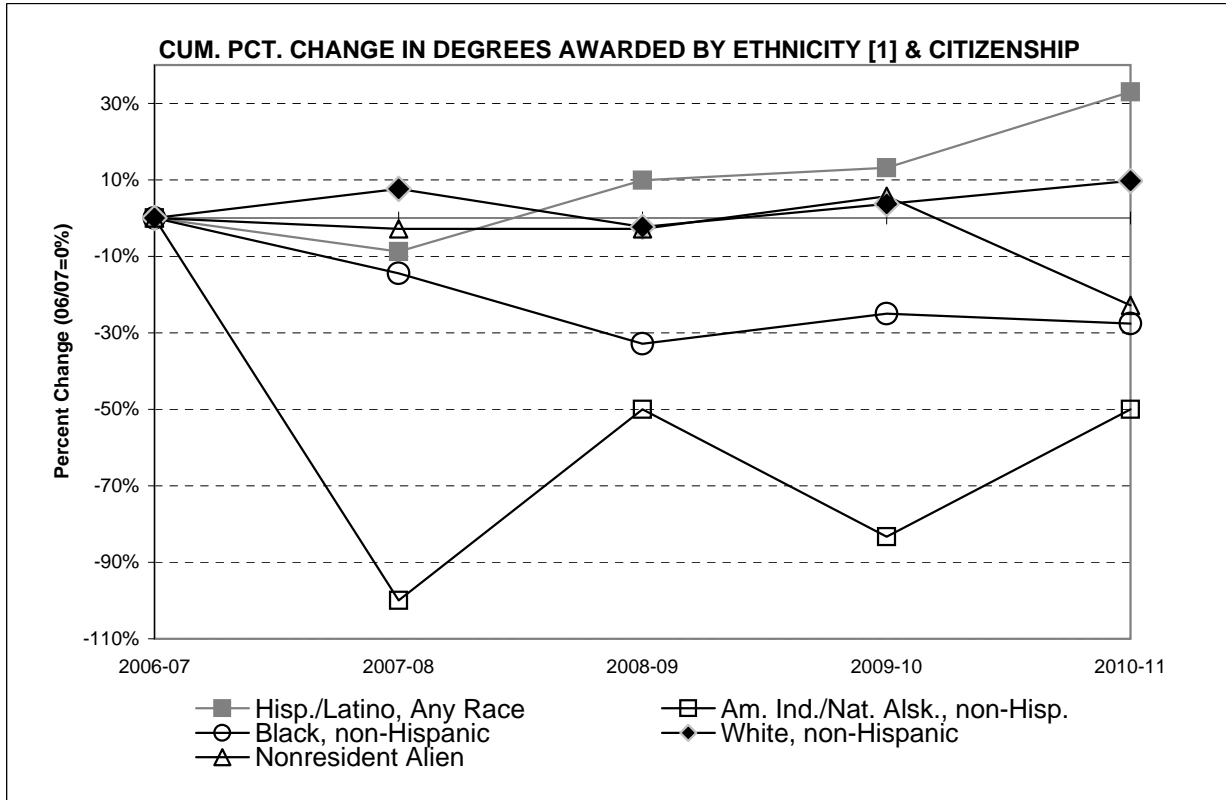
DEGREES AWARDED BY CITIZENSHIP, 2006-07 TO 2010-11

Bachelor's	2006-07		2007-08		2008-09		2009-10		2010-11		Pct. Change 06/07 to 10/11	Pct. Change 09/10 to 10/11
	No.	Pct.	No.	Pct.	No.	Pct.	No.	Pct.	No.	Pct.		
Citizen/Permanent Res.	1,172	97.1%	1,207	97.3%	1,111	97.3%	1,223	97.2%	1,298	98.0%	10.8%	6.1%
non-Citizen/non-Res.	35	2.9%	33	2.7%	31	2.7%	35	2.8%	27	2.0%	-22.9%	-22.9%
Total	1,207		1,240		1,142		1,258		1,325		9.8%	5.3%

Graduate	2006-07		2007-08		2008-09		2009-10		2010-11		Pct. Change 06/07 to 10/11	Pct. Change 09/10 to 10/11
	No.	Pct.	No.	Pct.	No.	Pct.	No.	Pct.	No.	Pct.		
Citizen/Permanent Res.	96	100.0%	115	99.1%	109	97.3%	91	97.8%	99	100.0%	3.1%	8.8%
non-Citizen/non-Res.	0	0.0%	1	0.9%	3	2.7%	2	2.2%	0	0.0%	N/A	-100.0%
Total	96		116		112		93		99		3.1%	6.5%

Total	2006-07		2007-08		2008-09		2009-10		2010-11		Pct. Change 06/07 to 10/11	Pct. Change 09/10 to 10/11
	No.	Pct.	No.	Pct.	No.	Pct.	No.	Pct.	No.	Pct.		
Citizen/Permanent Res.	1,268	97.3%	1,322	97.5%	1,220	97.3%	1,314	97.3%	1,397	98.1%	10.2%	6.3%
non-Citizen/non-Res.	35	2.7%	34	2.5%	34	2.7%	37	2.7%	27	1.9%	-22.9%	-27.0%
Total	1,303		1,356		1,254		1,351		1,424		9.3%	5.4%

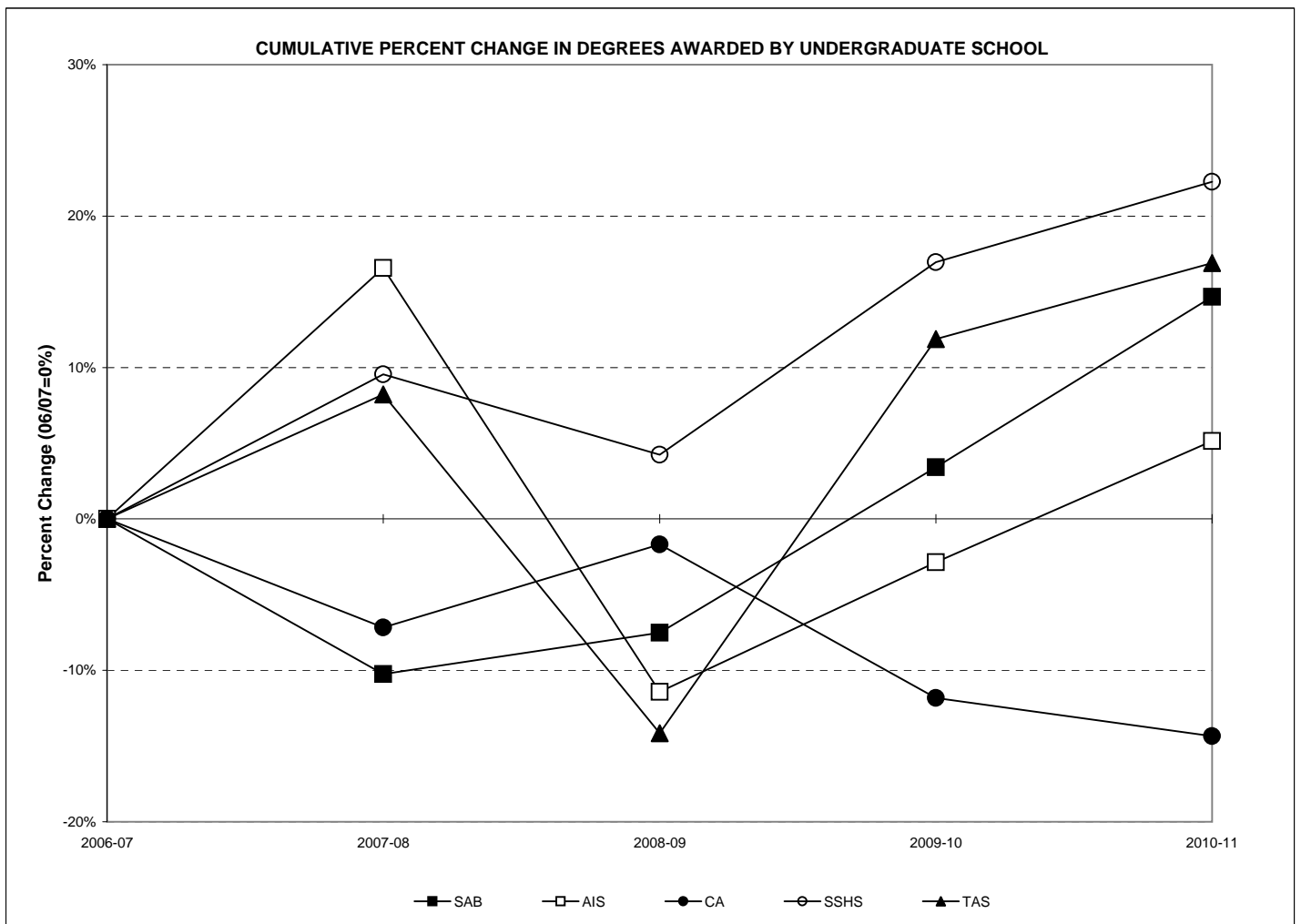
[1] New Race/Ethnicity categories came into effect in AY09-10. Until at least two years' data is collected, we can not calculate the percent change for the new non-Hispanic categories for: Asian, Hawaiian/Pacific Islander and Multiple-Races. Prior to 2009-10, the counts above for "Asian, non-Hispanic" were formerly grouped together as "Asian or Pacific Islander."



[1] New Race/Ethnicity categories came into effect in AY09-10 (as listed on page 15, top left). After 5 years' data is collected, we will be able to calculate the cumulative percent change for the new non-Hispanic categories for: Asian, Hawaiian/Pacific Islander and Multiple-Races.

DEGREES AWARDED BY UNDERGRADUATE SCHOOL AND COMBINED GRADUATE PROGRAMS, 2006-07 TO 2010-11

Schools	2006-07		2007-08		2008-09		2009-10		2010-11		Percent Change 06/07 to 10/11	Percent Change 09/10 to 10/11
	No.	Pct.	No.	Pct.	No.	Pct.	No.	Pct.	No.	Pct.		
Anisfield School of Business	293	22.5%	263	19.5%	271	21.6%	303	22.4%	336	23.6%	14.7%	10.9%
American & Int'l. Studies	175	13.4%	204	15.1%	155	12.4%	170	12.6%	184	12.9%	5.1%	8.2%
Contemporary Arts	237	18.2%	220	16.3%	233	18.6%	209	15.5%	203	14.3%	-14.3%	-2.9%
Soc.Science & Human Services	283	21.7%	310	23.0%	295	23.5%	331	24.5%	346	24.3%	22.3%	4.5%
Theoretical & Applied Science	219	16.8%	237	17.6%	188	15.0%	245	18.1%	256	18.0%	16.9%	4.5%
Graduate Programs	96	7.4%	116	8.6%	112	8.9%	93	6.9%	99	7.0%	3.1%	6.5%
Total	1,303		1,350		1,254		1,351		1,424	0.0%	9.3%	5.4%



DEGREES AWARDED BY SCHOOL AND MAJOR (WITH GRADUATE PROGRAMS), 2006-07 TO 2010-11

Majors/Programs	2006-07		2007-08		2008-09		2009-10		2010-11		Percent Chg. 06/07 to 10/11	Percent Chg. 09/10 to 10/11
	No.	Pct.	No.	Pct.	No.	Pct.	No.	Pct.	No.	Pct.		
Accounting	74	5.7%	53	3.9%	59	4.7%	73	5.4%	82	5.8%	10.8%	12.3%
Business Administration	165	12.7%	152	11.3%	166	13.2%	192	14.2%	202	14.2%	22.4%	5.2%
Economics	20	1.5%	12	0.9%	11	0.9%	13	1.0%	5	0.4%	-75.0%	-61.5%
Information Systems	17	1.3%	29	2.1%	19	1.5%	11	0.8%	24	1.7%	41.2%	118.2%
International Business	17	1.3%	17	1.3%	16	1.3%	14	1.0%	23	1.6%	35.3%	64.3%
Sub-Total: ASB	293	22.5%	263	19.5%	271	21.6%	303	22.4%	336	23.6%	14.7%	10.9%
American Studies	11	0.8%	6	0.4%	7	0.6%	10	0.7%	8	0.6%	-27.3%	-20.0%
History	52	4.0%	64	4.7%	63	5.0%	63	4.7%	60	4.2%	15.4%	-4.8%
International Studies	12	0.9%	22	1.6%	11	0.9%	18	1.3%	19	1.3%	58.3%	5.6%
Liberal Studies	--	0.0%	--	0.0%	--	0.0%	1	0.1%	3	0.2%	N/A	200.0%
Law and Society [1]	2	0.2%	1	0.1%	--	0.0%	--	0.0%	--	0.0%	N/A	N/A
Literature	68	5.2%	82	6.1%	51	4.1%	50	3.7%	60	4.2%	-11.8%	20.0%
Political Science	25	1.9%	26	1.9%	17	1.4%	22	1.6%	24	1.7%	-4.0%	9.1%
Spanish Language Studies	5	0.4%	3	0.2%	6	0.5%	6	0.4%	10	0.7%	100.0%	66.7%
Sub-Total: AIS	175	13.4%	204	15.1%	155	12.4%	170	12.6%	184	12.9%	5.1%	8.2%
Communication Arts	139	10.7%	133	9.9%	125	10.0%	123	9.1%	126	8.8%	-9.4%	2.4%
Contemporary Arts	35	2.7%	31	2.3%	32	2.6%	31	2.3%	26	1.8%	-25.7%	-16.1%
Music	20	1.5%	18	1.3%	18	1.4%	22	1.6%	16	1.1%	-20.0%	-27.3%
Theater	8	0.6%	15	1.1%	16	1.3%	4	0.3%	13	0.9%	62.5%	225.0%
Visual Arts	35	2.7%	23	1.7%	42	3.3%	29	2.1%	22	1.5%	-37.1%	-24.1%
Sub-Total: CA	237	18.2%	220	16.3%	233	18.6%	209	15.5%	203	14.3%	-14.3%	-2.9%
Environmental Studies [2]	16	1.2%	11	0.8%	11	0.9%	14	1.0%	22	1.5%	37.5%	57.1%
Law and Society [1]	53	4.1%	68	5.0%	53	4.2%	49	3.6%	42	2.9%	-20.8%	-14.3%
Psychology [3]	159	12.2%	167	12.4%	164	13.1%	200	14.8%	196	13.8%	23.3%	-2.0%
Social Science	14	1.1%	15	1.1%	13	1.0%	26	1.9%	30	2.1%	114.3%	15.4%
Social Work	24	1.8%	29	2.1%	37	3.0%	23	1.7%	34	2.4%	41.7%	47.8%
Sociology	17	1.3%	20	1.5%	17	1.4%	19	1.4%	22	1.5%	29.4%	15.8%
Sub-Total: SSHS	283	21.7%	310	23.0%	295	23.5%	331	24.5%	346	24.3%	22.3%	4.5%
Allied Health	0	0.0%	1	0.1%	1	0.1%	1	0.1%	0	0.0%	N/A	-100.0%
Biochemistry	6	0.5%	9	0.7%	8	0.6%	9	0.7%	8	0.6%	33.3%	-11.1%
Bioinformatics	4	0.3%	6	0.4%	0	0.0%	2	0.1%	2	0.1%	-50.0%	0.0%
Biology	60	4.6%	66	4.9%	52	4.1%	92	6.8%	94	6.6%	56.7%	2.2%
Chemistry	5	0.4%	3	0.2%	1	0.1%	7	0.5%	6	0.4%	20.0%	-14.3%
Clinical Lab Science	0	0.0%	0	0.0%	0	0.0%	1	0.1%	2	0.1%	N/A	100.0%
Computer Science	18	1.4%	14	1.0%	11	0.9%	7	0.5%	7	0.5%	-61.1%	0.0%
Engineering Physics [4]	--	0.0%	--	0.0%	--	0.0%	1	0.1%	8	0.6%	N/A	700.0%
Environmental Science	4	0.3%	6	0.4%	9	0.7%	8	0.6%	12	0.8%	200.0%	50.0%
Environmental Studies [2]	1	0.1%	2	0.1%	--	0.0%	--	0.0%	--	0.0%	N/A	N/A
Integrated Science Studies	3	0.0%	3	0.0%	1	0.0%	1	0.0%	1	0.0%	-66.7%	0.0%
Mathematics	17	1.3%	22	1.6%	14	1.1%	15	1.1%	20	1.4%	17.6%	33.3%
Nursing	89	6.8%	101	7.5%	86	6.9%	97	7.2%	95	6.7%	6.7%	-2.1%
Physics [4]	4	0.3%	4	0.3%	3	0.2%	4	0.3%	1	0.1%	-75.0%	-75.0%
Psychology [3]	8	0.6%	--	0.0%	2	0.2%	--	0.0%	--	0.0%	N/A	N/A
Sub-Total: TAS	219	16.8%	237	17.6%	188	15.0%	245	18.1%	256	18.0%	16.9%	4.5%
M.A. in Liberal Studies	10	0.8%	4	0.3%	8	0.6%	7	0.5%	8	0.6%	-20.0%	14.3%
M. in Business Admin.	10	0.8%	6	0.4%	7	0.6%	4	0.3%	0	0.0%	-100.0%	-100.0%
M.S. in Educational Tech.	66	5.1%	84	6.2%	81	6.5%	69	5.1%	73	5.1%	10.6%	5.8%
M.S. in Nursing	10	0.8%	22	1.6%	16	1.3%	13	1.0%	18	1.3%	80.0%	38.5%
Sub-Total: Graduate	96	7.4%	116	8.6%	112	8.9%	93	6.9%	99	7.0%	3.1%	6.5%
Total	1,303		1,350		1,254		1,351		1,424		9.3%	5.4%

[1] Law and Society is no longer offered in AIS.

[2] Environmental Studies is no longer offered in TAS.

[3] Psychology is no longer offered in TAS.

[4] Engineering Physics was first offered in Fall 2008 and will phase out the Physics major.

DEGREES AWARDED BY MAJOR (WITH GRADUATE PROGRAMS), 2006-07 TO 2010-11

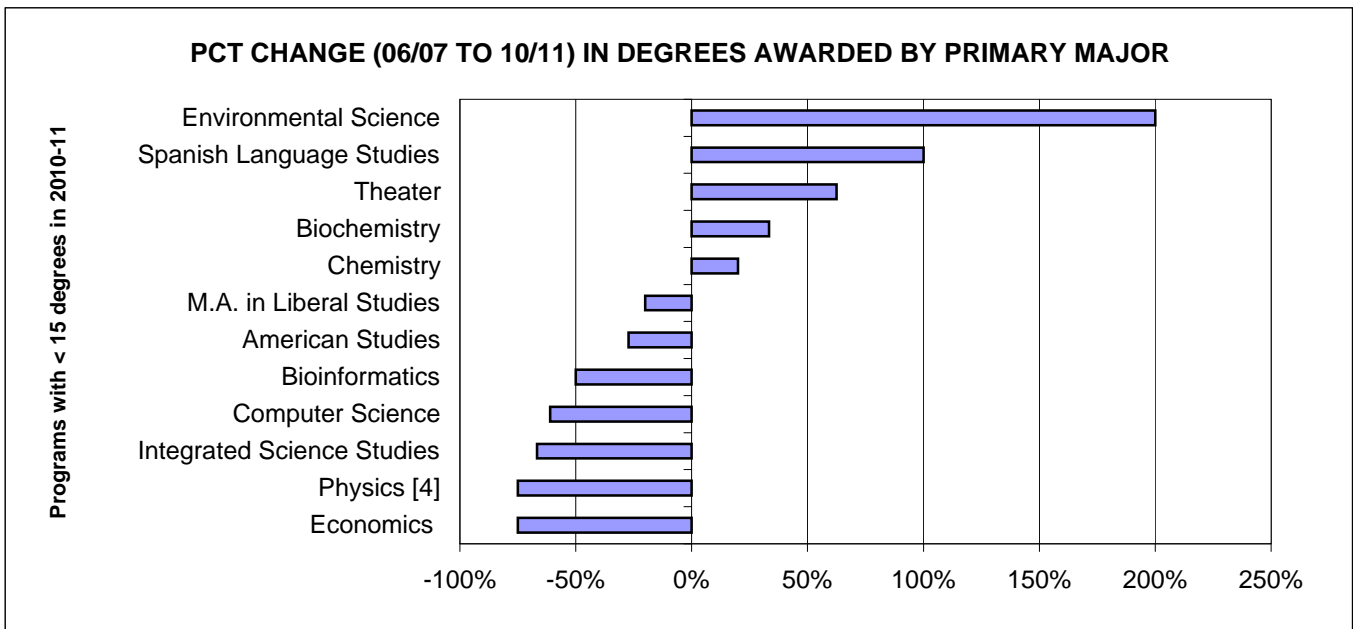
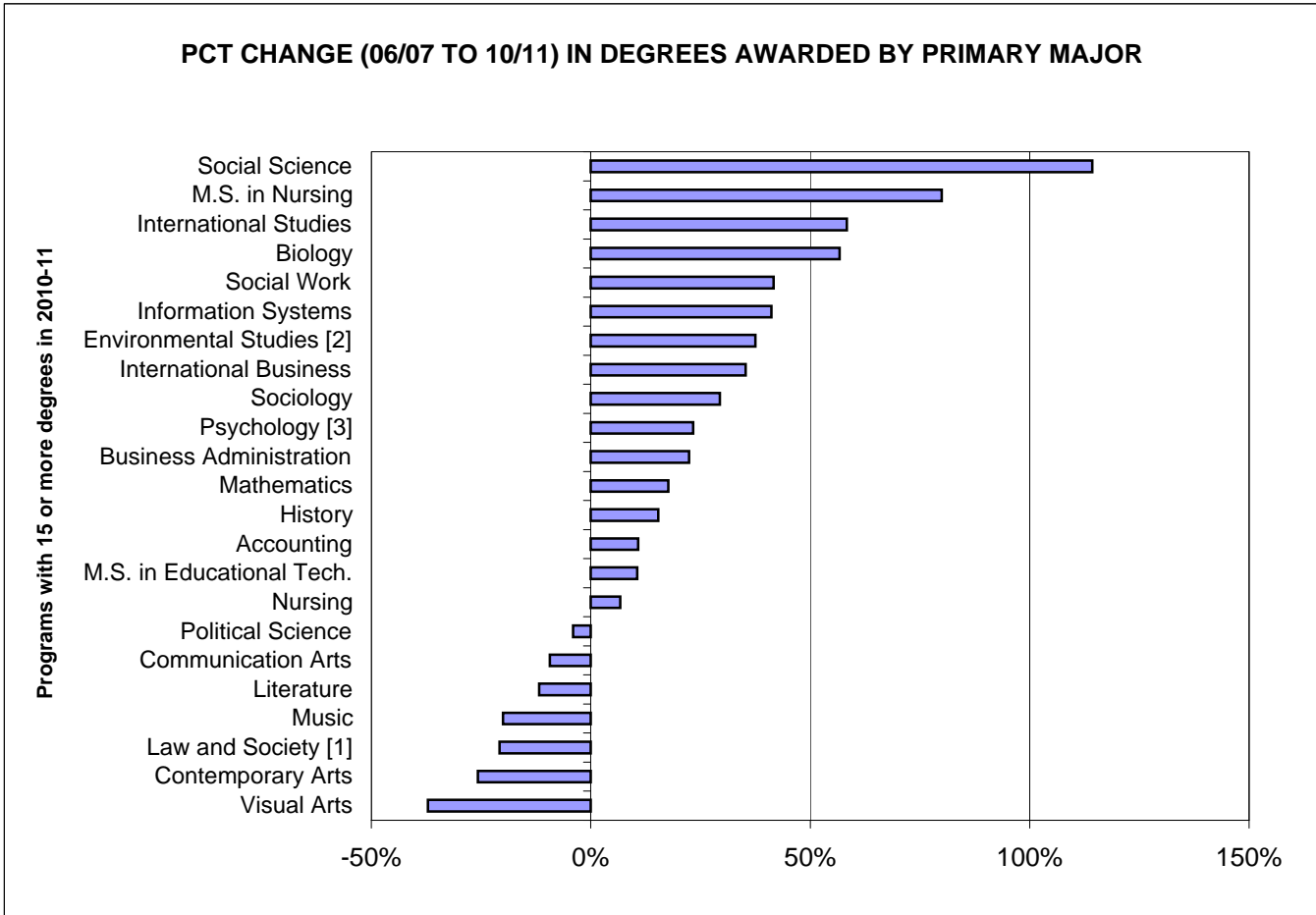
Major/Program	2006-07		2007-08		2008-09		2009-10		2010-11		Percent	Percent
	No.	Pct.	No.	Pct.	No.	Pct.	No.	Pct.	No.	Pct.	Chg. 06/07 to 10/11	Chg. 09/10 to 10/11
Accounting	74	5.7%	53	3.9%	59	4.7%	73	5.4%	82	5.8%	10.8%	12.3%
Allied health	--	--	1	0.1%	1	0.1%	1	0.1%	0	0.0%	N/A	-100.0%
American Studies	11	0.8%	6	0.4%	7	0.6%	10	0.7%	8	0.6%	-27.3%	-20.0%
Biochemistry	6	0.5%	9	0.7%	8	0.6%	9	0.7%	8	0.6%	33.3%	-11.1%
Bioinformatics	4	0.3%	6	0.4%	0	0.0%	2	0.1%	2	0.1%	-50.0%	0.0%
Biology	60	4.6%	66	4.9%	52	4.1%	92	6.8%	94	6.6%	56.7%	2.2%
Business Administration	165	12.7%	152	11.3%	166	13.2%	192	14.2%	202	14.2%	22.4%	5.2%
Chemistry	5	0.4%	3	0.2%	1	0.1%	7	0.5%	6	0.4%	20.0%	-14.3%
Clinical Lab Science	--	--	--	--	--	--	1	0.1%	2	0.1%	N/A	100.0%
Communication Arts	139	10.7%	133	9.9%	125	10.0%	123	9.1%	126	8.8%	-9.4%	2.4%
Computer Science	18	1.4%	14	1.0%	11	0.9%	7	0.5%	7	0.5%	-61.1%	0.0%
Contemporary Arts	35	2.7%	31	2.3%	32	2.6%	31	2.3%	26	1.8%	-25.7%	-16.1%
Economics	20	1.5%	12	0.9%	11	0.9%	13	1.0%	5	0.4%	-75.0%	-61.5%
Engineering Physics ^[4]	--	--	--	--	--	--	1	0.1%	8	0.6%	N/A	700.0%
Environmental Science	4	0.3%	6	0.4%	9	0.7%	8	0.6%	12	0.8%	200.0%	50.0%
Environmental Studies ^[2]	17	1.3%	13	1.0%	11	0.9%	14	1.0%	22	1.5%	29.4%	57.1%
History	52	4.0%	64	4.7%	63	5.0%	63	4.7%	60	4.2%	15.4%	-4.8%
Information Systems	17	1.3%	29	2.1%	19	1.5%	11	0.8%	24	1.7%	41.2%	118.2%
Integrated Science	3	0.2%	3	0.2%	1	0.1%	1	0.1%	1	0.1%	-66.7%	0.0%
International Business	17	1.3%	17	1.3%	16	1.3%	14	1.0%	23	1.6%	35.3%	64.3%
International Studies	12	0.9%	22	1.6%	11	0.9%	18	1.3%	19	1.3%	58.3%	5.6%
Law and Society ^[1]	55	4.2%	69	5.1%	53	4.2%	49	3.6%	42	2.9%	-23.6%	-14.3%
Liberal Studies	--	--	--	--	--	--	1	0.1%	3	0.2%	N/A	200.0%
Literature	68	5.2%	82	6.1%	51	4.1%	50	3.7%	60	4.2%	-11.8%	20.0%
M.A. in Business Admin.	10	0.8%	6	0.4%	7	0.6%	4	0.3%	0	0.0%	-100.0%	-100.0%
M.A. in Liberal Studies	10	0.8%	4	0.3%	8	0.6%	7	0.5%	8	0.6%	-20.0%	14.3%
M.S. in Ed. Technology	66	5.1%	84	6.2%	81	6.5%	69	5.1%	73	5.1%	10.6%	5.8%
M.S. in Nursing	10	0.8%	22	1.6%	16	1.3%	13	1.0%	18	1.3%	80.0%	38.5%
Mathematics	17	1.3%	22	1.6%	14	1.1%	15	1.1%	20	1.4%	17.6%	33.3%
Music	20	1.5%	18	1.3%	18	1.4%	22	1.6%	16	1.1%	-20.0%	-27.3%
Nursing	89	6.8%	101	7.5%	86	6.9%	97	7.2%	95	6.7%	6.7%	-2.1%
Physics ^[4]	4	0.3%	4	0.3%	3	0.2%	4	0.3%	1	0.1%	-75.0%	-75.0%
Political Science	25	1.9%	26	1.9%	17	1.4%	22	1.6%	24	1.7%	-4.0%	9.1%
Psychology ^[3]	167	12.8%	167	12.4%	166	13.2%	200	14.8%	196	13.8%	17.4%	-2.0%
Social Science	14	1.1%	15	1.1%	13	1.0%	26	1.9%	30	2.1%	114.3%	15.4%
Social Work	24	1.8%	29	2.1%	37	3.0%	23	1.7%	34	2.4%	41.7%	47.8%
Sociology	17	1.3%	20	1.5%	17	1.4%	19	1.4%	22	1.5%	29.4%	15.8%
Spanish Language Studies	5	0.4%	3	0.2%	6	0.5%	6	0.4%	10	0.7%	100.0%	66.7%
Theater	8	0.6%	15	1.1%	16	1.3%	4	0.3%	13	0.9%	62.5%	225.0%
Visual Arts	35	2.7%	23	1.7%	42	3.3%	29	2.1%	22	1.5%	-37.1%	-24.1%
Total	1,303		1,350		1,254		1,351		1,424		9.3%	5.4%

[1] Law and Society is no longer offered in AIS.

[2] Environmental Studies is no longer offered in TAS.

[3] Psychology is no longer offered in TAS.

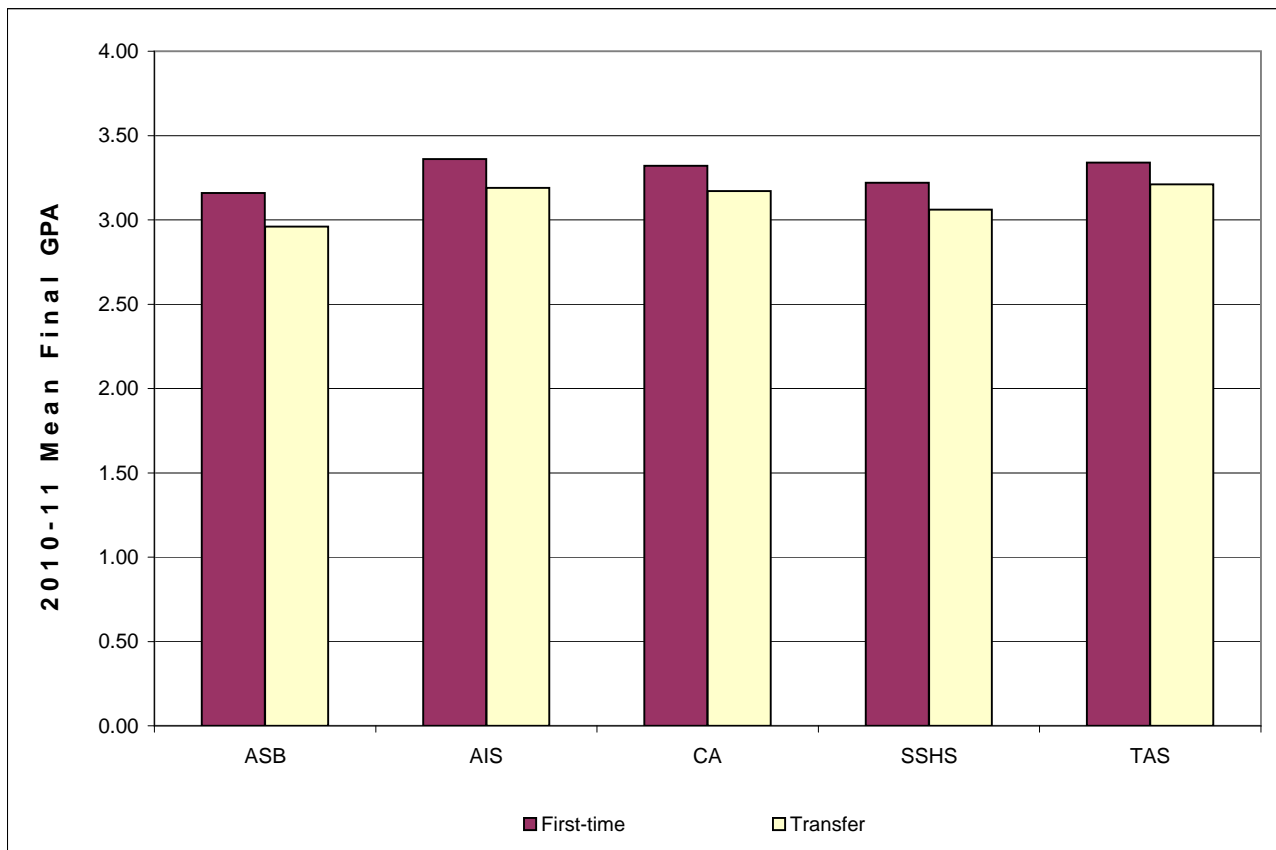
[4] Engineering Physics was first offered in Fall 2008 and will phase out the Physics major.



(please see footnotes on page 19)

**MEAN FINAL GRADE POINT AVERAGES BY SCHOOL AND INITIAL ADMISSIONS TYPE
2010-11 DEGREE RECIPIENTS, UNDERGRADUATE ONLY**

School	Mean Final Grade Point Average of First-time Students		Mean Final Grade Point Average of Transfer Students		Overall Mean GPA
	Number	Mean GPA	Number	Mean GPA	
Anisfield School of Business	176	3.16	160	2.96	3.07
American & Int'l. Studies	87	3.36	97	3.19	3.27
Contemporary Arts	100	3.32	103	3.17	3.25
Social Science & Human Services	160	3.22	186	3.06	3.13
Theoretical & Applied Science	156	3.34	100	3.21	3.29
Overall	679	3.26	646	3.10	3.18



NEW UNDERGRADUATE STUDENT COHORT RETENTION RATES

Fall of Entry	Sub-Cohorts*	Original Size	Retained One-Year		Retained Two-Years		Retained Three-Years		Retained Four-Years		Retained Five-Years		Retained Six-Years	
			#	Rate	#	Rate	#	Rate	#	Rate	#	Rate	#	Rate
2005	FTFTF	748	655	87.6%	591	79.0%	559	74.7%	136	18.2%	34	4.5%	14	1.9%
	PTFTF	0	-	N/A	-	N/A	-	N/A	-	N/A	-	N/A	0	N/A
	FTTR	396	316	79.8%	197	49.7%	64	16.2%	19	4.8%	3	0.8%	3	0.8%
	PTTR	76	44	57.9%	37	48.7%	19	25.0%	10	13.2%	3	3.9%	1	1.3%
	Total	1,220	1,015	83.2%	825	67.6%	642	52.6%	165	13.5%	40	3.3%	18	1.5%
2006	FTFTF	813	731	89.9%	669	82.3%	618	76.0%	159	19.6%	34	4.2%	-	-
	PTFTF	1	1	100.0%	1	100.0%	1	100.0%	1	100.0%	0	N/A	-	-
	FTTR	540	454	84.1%	271	50.2%	93	17.2%	24	4.4%	6	1.1%	-	-
	PTTR	70	41	58.6%	35	50.0%	19	27.1%	10	14.3%	5	7.1%	-	-
	Total	1,424	1,227	86.2%	976	68.5%	731	51.3%	194	13.6%	45	3.2%	-	-
2007	FTFTF	900	791	87.9%	728	80.9%	676	75.1%	173	19.2%	-	-	-	-
	PTFTF	2	0	0.0%	0	0.0%	0	0.0%	0	0.0%	-	-	-	-
	FTTR	549	468	85.2%	299	54.5%	106	19.3%	30	5.5%	-	-	-	-
	PTTR	67	42	62.7%	32	47.8%	19	28.4%	12	17.9%	-	-	-	-
	Total	1,518	1,301	85.7%	1,059	69.8%	801	52.8%	215	14.2%	-	-	-	-
2008	FTFTF	879	764	86.9%	703	80.0%	649	73.8%	-	-	-	-	-	-
	PTFTF	1	0	0.0%	1	100.0%	1	100.0%	-	-	-	-	-	-
	FTTR	564	464	82.3%	308	54.6%	107	19.0%	-	-	-	-	-	-
	PTTR	57	37	64.9%	24	42.1%	14	24.6%	-	-	-	-	-	-
	Total	1,501	1,265	84.3%	1,036	69.0%	771	51.4%	-	-	-	-	-	-
2009	FTFTF	934	824	88.2%	742	79.4%	-	-	-	-	-	-	-	-
	PTFTF	3	2	66.7%	1	33.3%	-	-	-	-	-	-	-	-
	FTTR	557	466	83.7%	296	53.1%	-	-	-	-	-	-	-	-
	PTTR	51	32	62.7%	27	52.9%	-	-	-	-	-	-	-	-
	Total	1,545	1,324	85.7%	1,066	69.0%	-	-	-	-	-	-	-	-
2010	FTFTF	895	770	86.0%	-	-	-	-	-	-	-	-	-	-
	PTFTF	2	0	0.0%	-	-	-	-	-	-	-	-	-	-
	FTTR	551	469	85.1%	-	-	-	-	-	-	-	-	-	-
	PTTR	38	21	55.3%	-	-	-	-	-	-	-	-	-	-
	Total	1,486	1,260	84.8%	-	-	-	-	-	-	-	-	-	-

* FTFTF=full-time, first-time freshmen; PTFTF=part-time, first-time freshmen; FTTR=full-time transfers; and PTTR=part-time transfers.

SIX-YEAR RETENTION BY ETHNICITY, FULL-TIME FIRST-TIME FRESHMEN

Fall of Entry	Sub-Cohorts	Original Size	Retained One-Year		Retained Two-Years		Retained Three-Years		Retained Four-Years		Retained Five-Years		Retained Six-Years	
			#	Rate	#	Rate	#	Rate	#	Rate	#	Rate	#	Rate
2005	Amer. I/Nat.Al.	2	2	100.0%	2	0.0%	2	0.0%	1	0.0%	0	0.0%	0	0.0%
	Asian/Pac Is.	32	28	87.5%	25	78.1%	25	78.1%	6	18.8%	1	3.1%	0	0.0%
	Black, Non-Hisp.	67	56	83.6%	45	67.2%	40	59.7%	12	17.9%	2	3.0%	2	3.0%
	Hispanic	67	58	86.6%	49	73.1%	47	70.1%	20	29.9%	9	13.4%	2	3.0%
	White, non Hisp.	580	511	88.1%	470	81.0%	445	76.7%	97	16.7%	22	3.8%	10	1.7%
	Total	748	655	87.6%	591	79.0%	559	74.7%	136	18.2%	34	4.5%	14	1.9%
2006	Amer. I/Nat.Al.	4	4	100.0%	3	0.0%	3	0.0%	0	0.0%	0	0.0%	-	-
	Asian/Pac Is.	35	30	85.7%	28	80.0%	23	65.7%	4	11.4%	2	5.7%	-	-
	Black, Non-Hisp.	71	59	83.1%	53	74.6%	44	62.0%	19	26.8%	3	4.2%	-	-
	Hispanic	91	83	91.2%	69	75.8%	63	69.2%	26	28.6%	3	3.3%	-	-
	White, non Hisp.	613	556	90.7%	517	84.3%	486	79.3%	110	17.9%	26	4.2%	-	-
	Total	814	732	89.9%	670	82.3%	619	76.0%	159	19.5%	34	4.2%	-	-
2007	Amer. I/Nat.Al.	2	2	100.0%	2	0.0%	2	0.0%	0	0.0%	-	-	-	-
	Asian/Pac Is.	44	41	93.2%	40	90.9%	35	79.5%	7	15.9%	-	-	-	-
	Black, Non-Hisp.	67	58	86.6%	50	74.6%	45	67.2%	19	28.4%	-	-	-	-
	Hispanic	78	60	76.9%	55	70.5%	49	62.8%	16	20.5%	-	-	-	-
	White, non Hisp.	709	630	88.9%	581	81.9%	545	76.9%	131	18.5%	-	-	-	-
	Total	900	791	87.9%	728	80.9%	676	75.1%	173	19.2%	-	-	-	-
2008	Amer. I/Nat.Al.	2	2	100.0%	2	100.0%	2	100.0%	-	-	-	-	-	-
	Asian/Pac Is.	56	49	87.5%	46	82.1%	43	76.8%	-	-	-	-	-	-
	Black, Non-Hisp.	55	47	85.5%	36	65.5%	34	61.8%	-	-	-	-	-	-
	Hispanic	93	78	83.9%	69	74.2%	61	65.6%	-	-	-	-	-	-
	White, non Hisp.	670	586	87.5%	549	81.9%	507	75.7%	-	-	-	-	-	-
	missing	3	2	66.7%	2	66.7%	2	66.7%	-	-	-	-	-	-
	Total	879	764	86.9%	704	80.1%	649	73.8%	-	-	-	-	-	-
2009	Amer. I/Nat.Al.	5	5	100.0%	5	100.0%	-	-	-	-	-	-	-	-
	Asian/Pac Is.	53	51	96.2%	49	92.5%	-	-	-	-	-	-	-	-
	Black, Non-Hisp.	45	37	82.2%	32	71.1%	-	-	-	-	-	-	-	-
	Hispanic	89	79	88.8%	69	77.5%	-	-	-	-	-	-	-	-
	White, non Hisp.	699	616	88.1%	553	79.1%	-	-	-	-	-	-	-	-
	missing	43	36	83.7%	34	79.1%	-	-	-	-	-	-	-	-
	Total	934	824	88.2%	742	79.4%	-	-	-	-	-	-	-	-
2010	Amer. I/Nat.Al., non-Hisp.	1	1	100.0%	-	-	-	-	-	-	-	-	-	-
	Asian, non-Hisp.	46	44	95.7%	-	-	-	-	-	-	-	-	-	-
	Black or Af. Amer. Non-Hisp.	34	28	82.4%	-	-	-	-	-	-	-	-	-	-
	Hisp./Latino of any race	99	83	83.8%	-	-	-	-	-	-	-	-	-	-
	Native Hawaiian or Other Pacific Islander, non-Hisp.	3	3	100.0%	-	-	-	-	-	-	-	-	-	-
	Race & Ethnicity unknown	30	22	73.3%	-	-	-	-	-	-	-	-	-	-
	Two or more races	6	6	100.0%	-	-	-	-	-	-	-	-	-	-
	White, non Hisp.	678	583	86.0%	-	-	-	-	-	-	-	-	-	-
	Total	897	770	85.8%	-	-	-	-	-	-	-	-	-	-

SIX-YEAR RETENTION BY ADMIT TYPE FOR FULL-TIME FIRST-TIME FRESHMEN

Fall of Entry	Sub-Cohorts	Original Size	Retained One-Year		Retained Two-Years		Retained Three-Years		Retained Four-Years		Retained Five-Years		Retained Six-Years	
			#	Rate	#	Rate	#	Rate	#	Rate	#	Rate	#	Rate
1998	Regular	352	295	83.8%	271	77.0%	246	69.9%	124	35.2%	35	9.9%	17	4.8%
	EOF	69	57	82.6%	46	66.7%	42	60.9%	23	33.3%	7	10.1%	1	1.4%
	Special	51	40	78.4%	36	70.6%	33	64.7%	20	39.2%	5	9.8%	4	7.8%
	Total	472	392	83.1%	353	74.8%	321	68.0%	167	35.4%	47	10.0%	22	4.7%
1999	Regular	414	330	79.7%	292	70.5%	270	65.2%	104	25.1%	30	7.2%	13	3.1%
	EOF	60	56	93.3%	44	73.3%	41	68.3%	21	35.0%	8	13.3%	4	6.7%
	Special	54	49	90.7%	42	77.8%	37	68.5%	21	38.9%	4	7.4%	1	1.9%
	Total	528	435	82.4%	378	71.6%	348	65.9%	146	27.7%	42	8.0%	18	3.4%
2000	Regular	511	439	85.9%	399	78.1%	380	74.4%	144	28.2%	21	4.1%	13	2.5%
	EOF	64	55	85.9%	50	78.1%	41	64.1%	23	35.9%	3	4.7%	2	3.1%
	Special	63	48	76.2%	41	65.1%	38	60.3%	20	31.7%	7	11.1%	0	0.0%
	Total	638	542	85.0%	490	76.8%	459	71.9%	187	29.3%	31	4.9%	15	2.4%
2001	Regular	497	414	83.3%	370	74.4%	353	71.0%	101	20.3%	16	3.2%	4	0.8%
	EOF	69	60	87.0%	54	78.3%	52	75.4%	24	34.8%	3	4.3%	3	4.3%
	Special	62	51	82.3%	44	71.0%	41	66.1%	15	24.2%	1	1.6%	0	0.0%
	Total	628	525	83.6%	468	74.5%	446	71.0%	140	22.3%	20	3.2%	7	1.1%
2002	Regular	543	485	89.3%	439	80.8%	423	77.9%	111	20.4%	23	4.2%	11	2.0%
	EOF	73	60	82.2%	51	69.9%	46	63.0%	21	28.8%	6	8.2%	1	1.4%
	Special	68	50	73.5%	46	67.6%	43	63.2%	14	20.6%	5	7.4%	0	0.0%
	Total	684	595	87.0%	536	78.4%	512	74.9%	146	21.3%	34	5.0%	12	1.8%
2003	Regular	582	524	90.0%	472	81.1%	460	79.0%	94	16.2%	22	3.8%	14	2.4%
	EOF	70	61	87.1%	47	67.1%	46	65.7%	14	20.0%	3	4.3%	1	1.4%
	Special	73	61	83.6%	59	80.8%	56	76.7%	20	27.4%	3	4.1%	1	1.4%
	Total	725	646	89.1%	578	79.7%	562	77.5%	128	17.7%	28	3.9%	16	2.2%
2004	Regular	610	549	90.0%	509	83.4%	479	78.5%	85	13.9%	16	2.6%	12	2.0%
	EOF	69	63	91.3%	50	72.5%	46	66.7%	23	33.3%	5	7.2%	4	5.8%
	Special	76	62	81.6%	57	75.0%	54	71.1%	20	26.3%	5	6.6%	2	2.6%
	Total	755	674	89.3%	616	81.6%	579	76.7%	128	17.0%	26	3.4%	18	2.4%
2005	Regular	602	530	88.0%	490	81.4%	465	77.2%	94	15.6%	21	3.5%	7	1.2%
	EOF	71	63	88.7%	47	66.2%	44	62.0%	21	29.6%	7	9.9%	4	5.6%
	Special	75	62	82.7%	54	72.0%	50	66.7%	21	28.0%	6	8.0%	2	2.7%
	Total	748	655	87.6%	591	79.0%	559	74.7%	136	18.2%	34	4.5%	13	1.7%
2006	Regular	649	587	90.4%	553	85.2%	516	79.5%	112	17.3%	24	3.7%	-	-
	EOF	85	80	94.1%	61	71.8%	55	64.7%	25	29.4%	1	1.2%	-	-
	Special	80	65	81.3%	56	70.0%	48	60.0%	22	27.5%	9	11.3%	-	-
	Total	814	732	89.9%	670	82.3%	619	76.0%	159	19.5%	34	4.2%	-	-
2007	Regular	700	620	88.6%	583	83.3%	542	77.4%	117	16.7%	-	-	-	-
	EOF	74	61	82.4%	52	70.3%	49	66.2%	23	31.1%	-	-	-	-
	Special	126	110	87.3%	93	73.8%	85	67.5%	33	26.2%	-	-	-	-
	Total	900	791	87.9%	728	80.9%	676	75.1%	173	19.2%	-	-	-	-
2008	Regular	656	566	86.3%	534	81.4%	491	74.8%	-	-	-	-	-	-
	EOF	82	77	93.9%	66	80.5%	59	72.0%	-	-	-	-	-	-
	Special	141	121	85.8%	104	73.8%	99	70.2%	-	-	-	-	-	-
	Total	879	764	86.9%	704	80.1%	649	73.8%	-	-	-	-	-	-
2009	Regular	745	657	88.2%	601	80.7%	-	-	-	-	-	-	-	-
	EOF	84	78	92.9%	65	77.4%	-	-	-	-	-	-	-	-
	Special	105	89	84.8%	76	72.4%	-	-	-	-	-	-	-	-
	Total	934	824	88.2%	742	79.4%	-	-	-	-	-	-	-	-

NEW UNDERGRADUATE STUDENT COHORT CUMULATIVE GRADUATION RATES

Fall of Entry	Sub-Cohorts*	Original Size	One-Year Cumulative Graduation		Two-Year Cumulative Graduation		Three-Year Cumulative Graduation		Four-Year Cumulative Graduation		Five-Year Cumulative Graduation		Six-Year Cumulative Graduation	
			#	Rate	#	Rate	#	Rate	#	Rate	#	Rate	#	Rate
2003	FTFTF	725	0	0.0%	0	0.0%	4	0.6%	428	59.0%	528	72.8%	537	74.1%
	PTFTF	0	0	0.0%	0	0.0%	0	0.0%	0	0.0%	0	0.0%	0	0.0%
	FTTR	378	2	0.5%	84	22.2%	190	50.3%	265	70.1%	275	72.8%	282	74.6%
	PTTR	120	0	0.0%	7	5.8%	22	18.3%	32	26.7%	40	33.3%	43	35.8%
	Total	1,223	2	0.2%	91	7.4%	216	17.7%	725	59.3%	843	68.9%	862	70.5%
2004	FTFTF	755	0	0.0%	0	0.0%	7	0.9%	486	64.4%	561	74.3%	565	74.8%
	PTFTF	0	0	0.0%	0	0.0%	0	0.0%	0	0.0%	0	0.0%	0	0.0%
	FTTR	398	2	0.5%	90	22.6%	236	59.3%	195	49.0%	211	53.0%	216	54.3%
	PTTR	93	0	0.0%	6	6.5%	20	21.5%	21	22.6%	30	32.3%	31	33.3%
	Total	1,246	2	0.2%	96	7.7%	263	21.1%	702	56.3%	802	64.4%	812	65.2%
2005	FTFTF	748	0	0.0%	2	0.3%	12	1.6%	446	59.6%	523	69.9%	537	71.8%
	PTFTF	0	0	0.0%	0	0.0%	0	0.0%	0	0.0%	0	0.0%	0	0.0%
	FTTR	396	3	0.8%	92	23.2%	221	55.8%	263	66.4%	272	68.7%	276	69.7%
	PTTR	76	0	0.0%	4	5.3%	19	25.0%	26	34.2%	29	38.2%	33	43.4%
	Total	1,220	3	0.2%	98	8.0%	252	20.7%	735	60.2%	824	67.5%	846	69.3%
2006	FTFTF	813	0	0.0%	0	0.0%	10	1.2%	488	60.0%	577	71.0%	-	-
	PTFTF	1	0	0.0%	0	0.0%	0	0.0%	1	0.0%	1	0.0%	-	-
	FTTR	540	1	0.2%	146	27.0%	315	58.3%	380	70.4%	394	73.0%	-	-
	PTTR	70	0	0.0%	1	1.4%	13	18.6%	21	30.0%	26	37.1%	-	-
	Total	1,424	1	0.1%	147	10.3%	338	23.7%	890	62.5%	998	70.1%	-	-
2007	FTFTF	900	0	0.0%	0	0.0%	8	0.9%	527	58.6%	-	-	-	-
	PTFTF	2	0	0.0%	0	0.0%	0	0.0%	0	0.0%	-	-	-	-
	FTTR	549	1	0.2%	151	27.5%	320	58.3%	395	71.9%	-	-	-	-
	PTTR	67	0	0.0%	2	3.0%	17	25.4%	22	32.8%	-	-	-	-
	Total	1,518	1	0.1%	153	10.1%	345	22.7%	944	62.2%	-	-	-	-
2008	FTFTF	879	0	0.0%	0	0.0%	15	1.7%	-	-	-	-	-	-
	PTFTF	1	0	0.0%	0	0.0%	0	0.0%	-	-	-	-	-	-
	FTTR	564	2	0.4%	136	24.1%	317	56.2%	-	-	-	-	-	-
	PTTR	57	0	0.0%	6	10.5%	15	26.3%	-	-	-	-	-	-
	Total	1,501	2	0.1%	142	9.5%	347	23.1%	-	-	-	-	-	-
2009	FTFTF	934	0	0.0%	0	0.0%	-	-	-	-	-	-	-	-
	PTFTF	3	0	0.0%	0	0.0%	-	-	-	-	-	-	-	-
	FTTR	557	1	0.2%	145	26.0%	-	-	-	-	-	-	-	-
	PTTR	51	0	0.0%	0	0.0%	-	-	-	-	-	-	-	-
	Total	1,545	1	0.1%	145	9.4%	-	-	-	-	-	-	-	-

FULL-TIME, FIRST-TIME FRESHMEN COHORT CUMULATIVE GRADUATION RATES

	Sub-Cohorts	Original Size	One-Year Cumulative Graduation		Two-Year Cumulative Graduation		Three-Year Cumulative Graduation		Four-Year Cumulative Graduation		Five-Year Cumulative Graduation		Six-Year Cumulative Graduation	
2004	Amer. I/Nat.AI.	1	0	0.0%	0	0.0%	0	0.0%	0	0.0%	0	0.0%	0	0.0%
	Asian/Pac Is.	40	0	0.0%	0	0.0%	1	2.5%	24	60.0%	26	65.0%	26	65.0%
	Black, Non-Hisp.	48	0	0.0%	0	0.0%	0	0.0%	19	39.6%	25	52.1%	25	52.1%
	Hispanic	64	0	0.0%	0	0.0%	0	0.0%	34	53.1%	46	71.9%	47	73.4%
	White, non Hisp.	602	0	0.0%	0	0.0%	6	1.0%	409	67.9%	464	77.1%	467	77.6%
	Total	755	0	0.0%	0	0.0%	7	0.9%	486	64.4%	561	74.3%	565	74.8%
2005	Amer. I/Nat.AI.	2	0	0.0%	0	0.0%	0	0.0%	1	50.0%	2	100.0%	2	0.0%
	Asian/Pac Is.	32	0	0.0%	0	0.0%	0	0.0%	16	50.0%	20	62.5%	21	65.6%
	Black, Non-Hisp.	67	0	0.0%	0	0.0%	0	0.0%	22	32.8%	29	43.3%	31	46.3%
	Hispanic	67	0	0.0%	0	0.0%	0	0.0%	21	31.3%	34	50.7%	37	55.2%
	White, non Hisp.	580	0	0.0%	2	0.3%	12	2.1%	386	66.6%	438	75.5%	446	76.9%
	Total	748	0	0.0%	2	0.3%	12	1.6%	446	59.6%	523	69.9%	537	71.8%
2006	Amer. I/Nat.AI.	4	0	0.0%	0	0.0%	0	0.0%	1	25.0%	1	25.0%	-	-
	Asian/Pac Is.	35	0	0.0%	0	0.0%	0	0.0%	20	57.1%	23	65.7%	-	-
	Black, Non-Hisp.	71	0	0.0%	0	0.0%	0	0.0%	23	32.4%	36	50.7%	-	-
	Hispanic	91	0	0.0%	0	0.0%	1	1.1%	35	38.5%	55	60.4%	-	-
	White, non Hisp.	613	0	0.0%	0	0.0%	9	1.5%	409	66.7%	462	75.4%	-	-
	Total	814	0	0.0%	0	0.0%	10	1.2%	488	60.0%	577	70.9%	-	-
2007	Amer. I/Nat.AI.	2	0	0.0%	0	0.0%	0	0.0%	2	100.0%	-	-	-	-
	Asian/Pac Is.	44	0	0.0%	0	0.0%	1	2.3%	31	70.5%	-	-	-	-
	Black, Non-Hisp.	67	0	0.0%	0	0.0%	0	0.0%	20	29.9%	-	-	-	-
	Hispanic	78	0	0.0%	0	0.0%	0	0.0%	28	35.9%	-	-	-	-
	White, non Hisp.	709	0	0.0%	0	0.0%	7	1.0%	446	62.9%	-	-	-	-
	Total	900	0	0.0%	0	0.0%	8	0.9%	527	58.6%	-	-	-	-
2008	Amer. I/Nat.AI.	2	0	0.0%	0	0.0%	0	0.0%	-	-	-	-	-	-
	Asian/Pac Is.	56	0	0.0%	0	0.0%	2	3.6%	-	-	-	-	-	-
	Black, Non-Hisp.	55	0	0.0%	0	0.0%	0	0.0%	-	-	-	-	-	-
	Hispanic	93	0	0.0%	0	0.0%	1	1.1%	-	-	-	-	-	-
	White, non Hisp.	670	0	0.0%	0	0.0%	12	1.8%	-	-	-	-	-	-
	missing	3	0	0.0%	0	0.0%	0	0.0%	-	-	-	-	-	-
	Total	879	0	0.0%	0	0.0%	15	1.7%	-	-	-	-	-	-
2009	Amer. I/Nat.AI.	5	0	0.0%	0	0.0%	-	-	-	-	-	-	-	-
	Asian/Pac Is.	53	0	0.0%	0	0.0%	-	-	-	-	-	-	-	-
	Black, Non-Hisp.	45	0	0.0%	0	0.0%	-	-	-	-	-	-	-	-
	Hispanic	89	0	0.0%	0	0.0%	-	-	-	-	-	-	-	-
	White, non Hisp.	699	0	0.0%	0	0.0%	-	-	-	-	-	-	-	-
	missing	43	0	0.0%	0	0.0%	-	-	-	-	-	-	-	-
	Total	934	0	0.0%	0	0.0%	-	-	-	-	-	-	-	-
2010	Amer. I/Nat.AI., non-Hisp.	1	0	0.0%	-	-	-	-	-	-	-	-	-	-
	Asian, non-Hisp.	46	0	0.0%	-	-	-	-	-	-	-	-	-	-
	Black or Af. Amer. non-Hisp.	34	0	0.0%	-	-	-	-	-	-	-	-	-	-
	Hisp./Latino of any race	99	0	0.0%	-	-	-	-	-	-	-	-	-	-
	Native Hawaiian or Other Pacific Islander, non-Hisp.	3	0	0.0%	-	-	-	-	-	-	-	-	-	-
	Race/Ethnicity unknown	30	0	0.0%	-	-	-	-	-	-	-	-	-	-
	Two or more races	6	0	0.0%	-	-	-	-	-	-	-	-	-	-
	White, non Hisp.	678	0	0.0%	-	-	-	-	-	-	-	-	-	-
	Total	897	0	0.0%	-	-	-	-	-	-	-	-	-	-

**TEN-YEAR CUMULATIVE GRADUATION RATES BY ADMIT TYPE
FOR FULL-TIME, FIRST-TIME FRESHMEN**

Fall of Entry	Sub-Cohorts	Original Size	Four-Year Cumulative Graduation [1]		Five-Year Cumulative Graduation		Six-Year Cumulative Graduation		Eight-Year Cumulative Graduation		Ten-Year Cumulative Graduation	
			#	Rate	#	Rate	#	Rate	#	Rate	#	Rate
1998	Regular	352	136	38.6%	211	59.9%	231	65.6%	236	67.0%	245	69.6%
	EOF	69	20	29.0%	33	47.8%	37	53.6%	38	55.1%	39	56.5%
	Special	51	14	27.5%	23	45.1%	26	51.0%	26	51.0%	29	56.9%
	Total	472	170	36.0%	267	56.6%	294	62.3%	300	63.6%	313	66.3%
1999	Regular	414	172	41.5%	235	56.8%	252	60.9%	257	62.1%	259	62.6%
	EOF	60	20	33.3%	27	45.0%	30	50.0%	34	56.7%	34	56.7%
	Special	54	11	20.4%	26	48.1%	29	53.7%	29	53.7%	29	53.7%
	Total	528	203	38.4%	288	54.5%	311	59.4%	320	60.6%	322	61.0%
2000	Regular	511	250	48.9%	341	66.7%	353	69.1%	366	71.6%	369	72.2%
	EOF	64	16	25.0%	31	48.4%	35	54.7%	37	57.8%	37	57.8%
	Special	63	18	28.6%	30	47.6%	31	49.2%	35	55.6%	35	55.6%
	Total	638	284	44.5%	402	63.0%	419	65.7%	438	68.7%	441	69.1%
2001	Regular	497	265	53.3%	329	66.2%	337	67.8%	340	68.4%	343	69.0%
	EOF	69	18	26.1%	30	43.5%	35	50.7%	36	52.2%	38	55.1%
	Special	62	21	33.9%	34	54.8%	35	56.5%	36	58.1%	36	58.1%
	Total	628	304	48.4%	393	62.6%	407	64.8%	412	65.6%	417	66.4%
2002	Regular	543	289	53.2%	392	72.2%	403	74.2%	408	75.1%	-	-
	EOF	73	17	23.3%	37	50.7%	41	56.2%	41	56.2%	-	-
	Special	68	24	35.3%	30	44.1%	33	48.5%	34	50.0%	-	-
	Total	684	330	48.2%	459	67.1%	477	69.7%	483	70.6%	-	-
2003	Regular	582	364	62.5%	438	75.3%	444	76.3%	447	76.8%	-	-
	EOF	70	27	38.6%	37	52.9%	39	55.7%	40	57.1%	-	-
	Special	73	37	50.7%	53	72.6%	54	74.0%	54	74.0%	-	-
	Total	725	428	59.0%	528	72.8%	537	74.1%	541	74.6%	-	-
2004	Regular	610	426	69.8%	475	77.9%	477	78.2%	-	-	-	-
	EOF	69	25	36.2%	38	55.1%	39	56.5%	-	-	-	-
	Special	76	35	46.1%	48	63.2%	49	64.5%	-	-	-	-
	Total	755	486	64.4%	561	74.3%	565	74.8%	-	-	-	-
2005	Regular	602	399	66.3%	452	75.1%	460	76.4%	-	-	-	-
	EOF	71	18	25.4%	31	43.7%	33	46.5%	-	-	-	-
	Special	75	29	38.7%	40	53.3%	44	58.7%	-	-	-	-
	Total	748	446	59.6%	523	69.9%	537	71.8%	-	-	-	-
2006	Regular	649	440	67.8%	496	76.4%	-	-	-	-	-	-
	EOF	85	24	28.2%	45	52.9%	-	-	-	-	-	-
	Special	80	24	30.0%	36	45.0%	-	-	-	-	-	-
	Total	814	488	60.0%	577	70.9%	-	-	-	-	-	-

[1] Includes all from cohort who are graduated in fewer than four years. *1999 cohort adjusted in fall 2005 from 528 to 524.