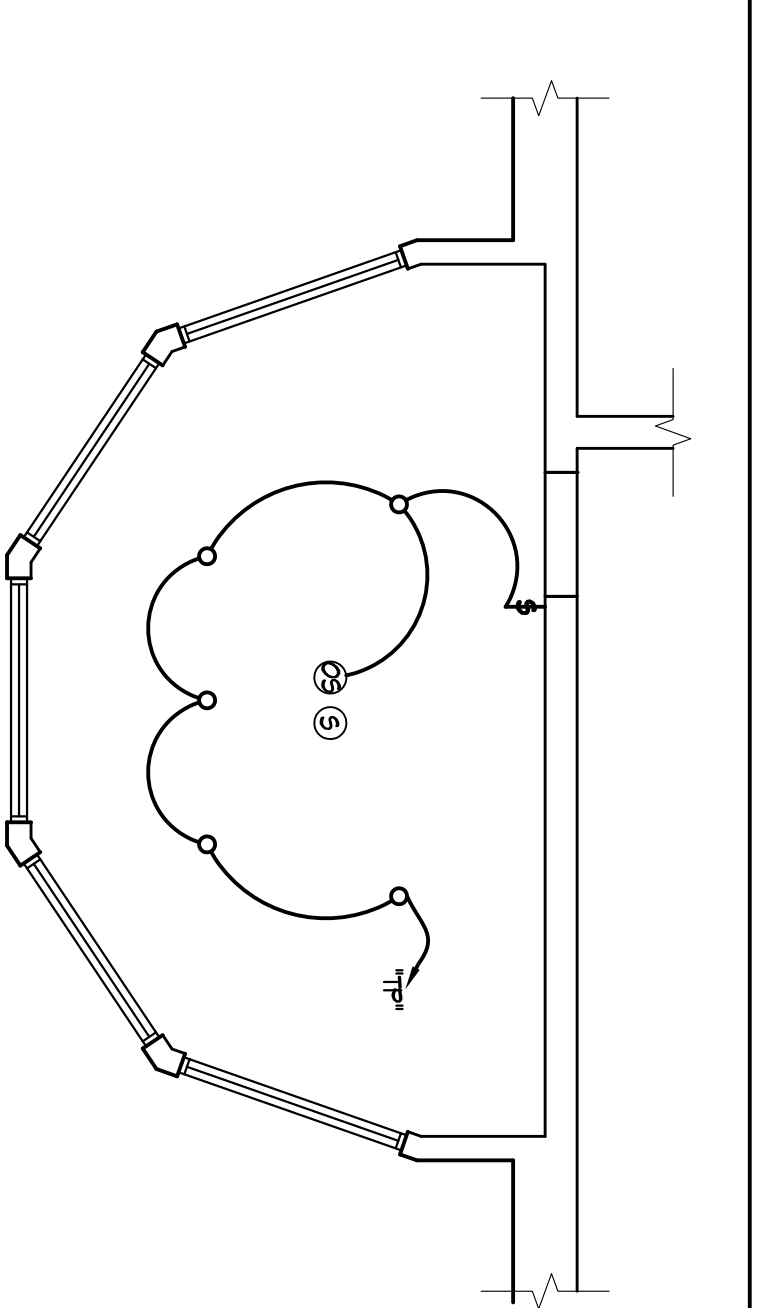


2 GROUND FLOOR OFFICE PLAN

SCALE: 1/4" = 1'-0"



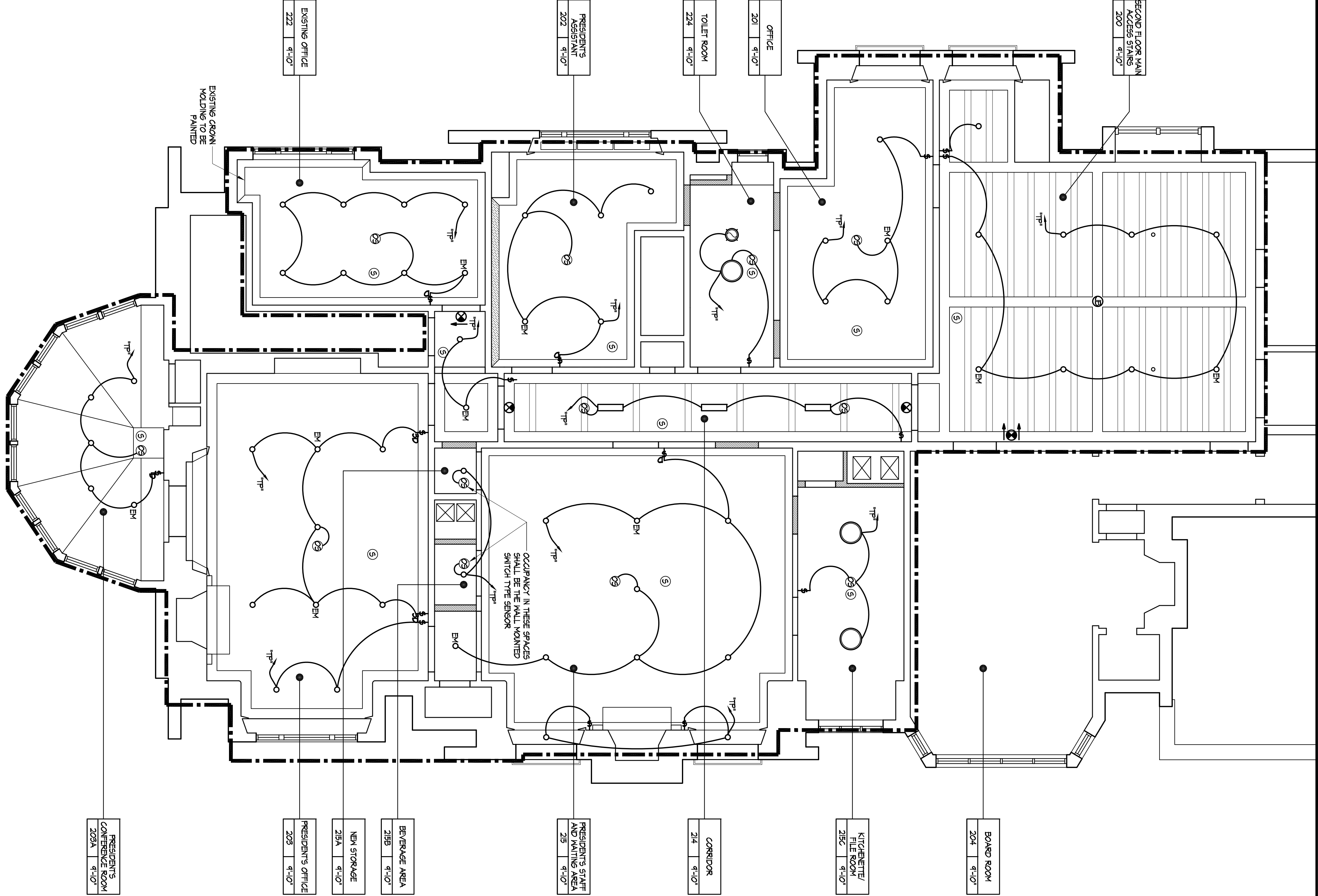
LIGHTING PLAN NOTES

1. ALL NEW LIGHT FIXTURES TO BE CONNECTED TO EXISTING CIRCUIT WITH 2#12 + #10G, N 3/4" CONDUIT VIA OCCUPANCY SENSOR AND SWITCH CONTROL, UNLESS OTHERWISE NOTED.
2. PROVIDE NEW EXIT SIGNS/EMERGENCY FIXTURES CONNECTED TO UNWIRING LED OF GENERAL LIGHTING CIRCUIT OF THE AREA WITH ALL NEW FIXTURES TO BE HANGING TO NEAREST 20' V.A.T. ELECTRICAL PANEL, HAVING SUFFICIENT SPARE CAPACITY CAPACITY AND SPACE AS REQUIRED FOR NEW WORK. CONTRACTOR SHALL FIELD VERIFY SPARE CAPACITY PRIOR TO COMMENCING NEW WORKS OR MODIFICATIONS TO EXISTING. PROVIDE NEW 20A/NEC NEW CIRCUIT BREAKERS SHALL MATCH EXISTING ELECTRICAL PANEL MANUFACTURER AND KVAIC RATINGS.
3. COORDINATE ALL ELECTRICAL WORK WITH ALL BUILDING ARCHITECTURAL AND STRUCTURAL ELEMENTS AND THE WORK OF OTHER TRADES.
5. ALL WORKMANSHIP TO BE PERFORMED IN ACCORDANCE WITH THE REQUIREMENTS OF THE AUTHORITY HAVING JURISDICTION AND ALL APPLICABLE LOCAL, CODES AND REGULATIONS.
6. ALL BRANCH CIRCUITS SUPPLIED BY #12 AWG CONDUCTORS WITH LENGTH OVER 100' SHALL BE INCREASED TO #10 AWG TO ACCOMMODATE FOR VOLTAGE DROP.
7. ALL NEW BRANCH CIRCUITS SHALL BE INSTALLED IN WALLS AND ABOVE THE CEILING. CONDUITS SHALL BE ROUTED AS HIGH AS POSSIBLE AND PARALLEL TO WALLS. WALLS SHALL BE CUT OPEN TO RUN ALL WORK IN WALL AND GENERAL CONTRACTOR SHALL PATCH/REPAIR AREAS AS TO LEAVE IT TO ITS ORIGINAL CONDITION.
8. COORDINATE THE EXISTING POWER REQUIREMENTS FOR RESEARCH.
4. ALL NEW FIRE ALARM EQUIPMENT SHOULD BE COORDINATED WITH THE DISTRICT FIRE ALARM ENGINEER AND SERVICE COMPANY FOR NEW INSTALLATIONS.
10. ALL LIGHT FIXTURE SWITCHES SHOWN MAY OR MAY NOT BE AT AN EXISTING SWITCH LOCATION. ALL EXISTING LIGHT FIXTURE SWITCHES AND WIRING SHALL BE REMOVED AND NEW SWITCHES AND WIRING SHALL BE PROVIDED. PROVIDE A COVER PLATE AT ABANDONED SWITCH LOCATION.
11. ALL EXISTING FIRE ALARM DEVICES TO REMAIN, EXCEPT EXISTING SMOKE DETECTORS WHICH SHALL BE REPLACED WITH NEW DEVICES. LOCATIONS SHOWN FOR SMOKE DETECTORS SHALL BE FIELD LOCATIONS DETERMINED IN ORDER TO HAVE THEIR INSTALLATION IN EXISTING LOCATIONS.
12. ALL LIGHT FIXTURES AND DEVICES SHOWN ARE BASIS OF DESIGN OR APPROVED EQUAL.
13. CONFIRM ALL NEW LIGHTING FIXTURE VOLTAGES WITH EXISTING CIRCUITS TO BE RE-USED PRIOR TO PURCHASE.

FLOOR PLAN LEGEND

- RECESSED DIRECTIONAL FIXTURE  
(LUMINAIR LIGHTING: 8280-35-24-LED-LP-MC20 (FLOOD LENS))
- 4" x 4" HIGH MANT  
(ATLANTIC LIGHTING: LED40-LP-2535-KIT-LED100-W)
- 4" x 6" HIGH MANT (EMERGENCY BATTERY BACKUP)  
(ATLANTIC LIGHTING: LED40-LP-2535-KIT-LED100-W)
- TT x SURFACE MOUNTED FIXTURE  
(MAXIMITE: M22-LAS-LB-0621-120V)
- NEW EXHAUST FAN  
(BROAN: XB10)
- NEW OCCUPANCY SENSOR  
(MANTIS OFFER: C-355)
- NEW SMOKE DETECTOR
- EXISTING JUNCTION BOX FOR RECESSED CHANDLIER
- NEW EXIT SIGN  
(LITHONIA LIGHTING: 2-EDS-1R-BACK MOUNTED)
- GENERAL USE SWITCH: 20A, 120V (DYNAMIC)
- GENERAL USE SWITCH: 20A, 120V (DYNAMIC)
- 3-WAY SWITCH (SWITCHING AS INDICATED)

SEE Q & A QUESTIONS  
15 AND 16



1 ELECTRICAL LIGHTING PLAN AND NOTES

SCALE: 1/4" = 1'-0"